

UNITED STATES  
DEPARTMENT OF THE INTERIOR  
BUREAU OF LAND MANAGEMENT

FORM APPROVED

Budget Bureau No. 1004-0136

Expires December 31, 1991

SUBMIT IN TRIPLICATE

APPLICATION FOR PERMIT TO DRILL OR DEEPEN

1a. Type of Work DRILL <input checked="" type="checkbox"/> DEEPEN <input type="checkbox"/>	5-15-97 <i>REN</i>	6. If Indian, Allottee or Tribe Name NM 68659
1b. Type of Well OIL WELL <input checked="" type="checkbox"/> GAS WELL <input type="checkbox"/> OTHER <input type="checkbox"/>	5-16-47 <i>JP</i> SINGLE ZONE <input checked="" type="checkbox"/> MULTIPLE ZONE <input type="checkbox"/>	7. Lease Designation and Serial No. NM 68659
2. Name of Operator TEXACO EXPLORATION & PRODUCTION INC.		8. Well Name and Number JIT '28' FEDERAL
3. Address and Telephone No. P.O. Box 3109, Midland Texas 79702 688-4606		9. API Well No. 1
4. Location of Well (Report location clearly and in accordance with any State requirements. *) At Surface Unit Letter J : 1980 Feet From The SOUTH Line and 1980 Feet From The EAST Line At proposed prod. zone SAME		10. Field and Pool, Exploratory Area WILDCAT - RAMSEY <i>Delaware</i>
14. Distance in Miles and Direction from Nearest Town or Post Office* 35 MLRS NW OF JAL, NM		11. SEC., T., R., M., or BLK. and Survey or Area Sec. 28, Township 22-S, Range 33-E
15. Distance From Proposed* Location to Nearest Property or Lease Line, Ft. (also to nearest drig. unit line, if any) 1980'	16. No. of Acres in Lease 800	12. County or Parish LEA
18. Distance From Proposed Location* to Nearest Well, Drilling, Completed or Applied For, On This Lease, Ft. 1st WELL	19. Proposed Depth 5200'	13. State NM
21. Elevations (Show whether DF, RT, GR, etc.) GR-3606'		17. No. of Acres Assigned To This Well 40
		20. Rotary or Cable Tools ROTARY
		22. Approx. Date Work Will Start* 6/16/97

23. PROPOSED CASING AND CEMENT PROGRAM				
SIZE OF HOLE	GRADE, SIZE OF CASING	WEIGHT PER FOOT	SETTING DEPTH	QUANTITY OF CEMENT
11	WC50, 8 5/8	24#	800'	350 SACKS - CIRCULATE <b>WITNESS</b>
7 7/8	WC50, 5 1/2	15.5#	5200'	900 SACKS - CIRCULATE <b>WITNESS</b>

CEMENTING PROGRAM:

SURFACE CASING: 350 SACKS CLASS C w/ 2% CC (14.8 PPG, 1.34 CF/S, 6.3 GW/S).

PRODUCTION CASING: 750 SACKS 35/65 POZ H w/ 6% GEL, 5% SALT, 1/4# FC (12.4 PPG, 2.14 CF/S, 11.9 GW/S). F/B 150 SACKS CLASS H (15.6 PPG, 1.18 CF/S, 5.2 GW/S).

8 DAYS TO DRILL, 10 DAYS TO COMPLETE.

THERE ARE NO OTHER OPERATORS IN THIS QUARTER QUARTER SECTION.

OPER. OGRID NO. 22351  
PROPERTY NO. 20968  
POOL CODE ✓  
EFF. DATE 6/18/97  
API NO. 30-025-34027

In Above Space Describe Proposed Program: If proposal is to deepen, give data on present productive zone and proposed new productive zone. If proposal is to drill or deepen directionally, give pertinent data on subsurface locations and measured true verticle depths. Give blowout preventer program, if any.

24. I hereby certify that the foregoing is true and correct

SIGNATURE C. Wade Howard TITLE Eng. Assistant DATE 5/14/97  
TYPE OR PRINT NAME C. Wade Howard

(This space for Federal or State office use)

PERMIT NO. \_\_\_\_\_ APPROVAL DATE \_\_\_\_\_

Application approval does not warrant or certify that the applicant holds legal or equitable title to those rights in the subject lease which would entitle the applicant to conduct operations thereon.

APPROVED BY (ORIG. SGD.) TONY L. FERGUSON TITLE ADM. MINERALS DATE 6-10-97

CONDITIONS OF APPROVAL, IF ANY:

Title 18 U.S.C. Section 1001, makes it a crime for any person knowingly and willfully to make to any department or agency of the United States any false, fictitious or fraudulent statements or representations as to any matter within its jurisdiction.



DISTRICT I  
P. O. Box 1980, Hobbs, NM 88240

DISTRICT II  
P. O. Drawer 50, Artesia, NM 88210

DISTRICT III  
1000 Rio Brazos Rd., Aztec, NM 87410

DISTRICT IV  
P. O. Box 2088, Santa Fe, NM 87504-2088

State of New Mexico  
Energy, Minerals and Natural Resources Department

Form C-102  
Revised February 10, 1994

Instructions on back

OIL CONSERVATION DIVISION  
PO Box 2088  
Santa Fe, NM 87504-2088

Submit to Appropriate District Office

State Lease-4 copies  
Fee Lease-3 copies

☐ AMENDED REPORT

WELL LOCATION AND ACREAGE DEDICATION PLAT

<sup>1</sup> API Number 30-025-34027		<sup>2</sup> Pool Code ✓	<sup>3</sup> Pool Name Delaware Ramsey, Wildcat
<sup>4</sup> Property Code 20968	<sup>5</sup> Property Name JIT "28" Federal		<sup>6</sup> Well Number 1
<sup>7</sup> OGRID No. 22351	<sup>8</sup> Operator Name TEXACO EXPLORATION & PRODUCTION, INC.		<sup>9</sup> Elevation 3806'

<sup>10</sup> Surface Location									
UL or lot no. J	Section 28	Township 22-S	Range 33-E	Lot Idn	Feet from the 1980'	North/South line South	Feet from the 1980'	East/West line East	<sup>11</sup> County Lea

<sup>11</sup> Bottom Hole Location If Different From Surface									
UL or lot no.	Section	Township	Range	Lot Idn	Feet from the	North/South line	Feet from the	East/West line	<sup>12</sup> County

<sup>13</sup> Dedicated Acres 40	<sup>14</sup> Joint or Infill	<sup>15</sup> Consolidation Code	<sup>16</sup> Order No.
-------------------------------------	-------------------------------	----------------------------------	-------------------------

NO ALLOWABLE WILL BE ASSIGNED TO THIS COMPLETION UNTIL ALL INTERESTS HAVE BEEN CONSOLIDATED  
OR A NON-STANDARD UNIT HAS BEEN APPROVED BY THE DIVISION.

	<b><sup>17</sup>OPERATOR CERTIFICATION</b> I hereby certify that the information contained herein is true and complete to the best of my knowledge and belief.
	Signature <i>C. Wade Howard</i>
	Printed Name C. Wade Howard
	Position Engineer's Assistant
	Company Texaco Expl. & Prod. Inc.
	Date May 13, 1997
	<b><sup>18</sup>SURVEYOR CERTIFICATION</b> I hereby certify that the well location shown on this plat was plotted from field notes of actual surveys made by me or under my supervision, and that the same is true and correct to the best of my knowledge and belief.
	Date Surveyed May 9, 1997
	Signature & Seal of Professional Surveyor <i>John S. Piper</i>
	Certificate No. 7254 John S. Piper

0 330 660 990 1320 1650 1980 2310 2640 2000 1500 1000 500 0

Sheet 8 of 8

## DRILLING PROGRAM

JIT '28' FEDERAL WELL NO. 1

### **SURFACE DESCRIPTION:**

See Item 11 (other information) in the attached Surface Use and Operations Plan.

**FORMATION TOPS:** Estimated KB Elevation: 3620'

<u>Formation</u>	<u>Depth</u>	<u>Lithology</u>	<u>Fluid Content</u>
Rustler	950'	Anhydrite, Salt	----
Salado	1245'	Salt	----
Castile	2030'	Anhydrite	Marker
Delaware	4925'	Shale	Marker
Ramsey	5050'	Sandstone	Oil/Gas

The base of the salt section is found around 2030'. No abnormal pressures or temperatures are anticipated to be encountered in this well. H<sub>2</sub>S is possible in this well. H<sub>2</sub>S RADIUS OF EXPOSURE: 100ppm = 23 feet, 500ppm = 11 feet, based on 800ppm and 115 MCF. (See attached H<sub>2</sub>S Drilling Operations Plan. H<sub>2</sub>S equipment to be operational prior to drilling out the Surface Casing Shoe.)

### **PRESSURE CONTROL EQUIPMENT:**

A 3000 psi Dual Ram type preventer with rotating head will be used. (See Exhibit C). We do not plan to have an annular preventer. We will be able to achieve full closure of the well with the double ram preventer. It will be installed after surface casing is set. BOP will be tested each time it is installed on a casing string and at least every 29 days, and operated at least once each 24-hour period during drilling.

A PVT system will not be installed. We will be drilling thru the reserve pit and will circulate the steel pits one hour each tour to check for gains and losses and will be noted on the driller's log, which is Texaco's policy.

We do not plan to run an automatic remote-controlled choke. We will have installed and tested two manual, H<sub>2</sub>S trimmed, chokes.



**CASING AND CEMENT PROGRAM:**

The cementing program is detailed on Form 3160-3. All casing will be new.

Surface Casing: 11" hole, 8 5/8", 24#, WC-50, LTC, set @ 800'

Production Casing: 7 7/8" hole, 5 1/2", 15.5#, WC-50, LTC,  
set @ 5200'.

**Centralizer Program:**

Surface Casing - Centralize the bottom 3 joints and every 4th to surface.

Production Casing - Centralize the bottom 500', every other cplg.

**MUD PROGRAM:**

<u>Depth</u>	<u>Type</u>	<u>Weight</u>	<u>Viscosity</u>
0'-800'	Fresh Water	8.4	28
800'-5200'	Brine Water	10.0	29

Bottom Hole Pressure at T.D. estimated to be 8.3 PPG EMW. (2244 psi)

Duration of Operation: 8 Days to Drill + 10 Days to Complete= 18 Days

**LOGGING, TESTING:**

GR-CAL-CNL-LDT and GR-SP-AIT surveys will be run.

Mud Logging Unit will be used for the Pay Section.

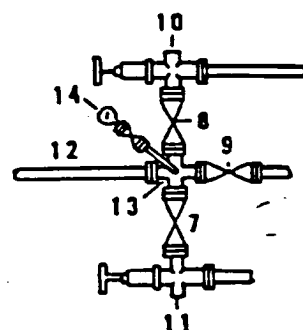
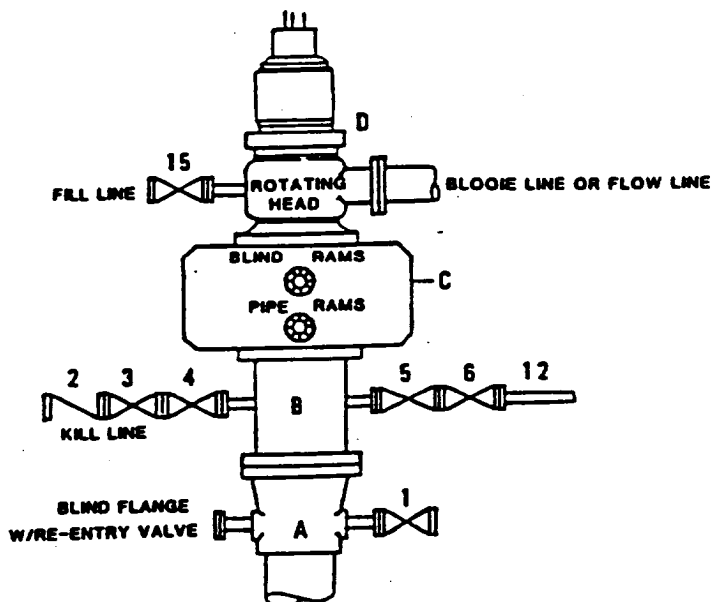
No drill stem tests will be conducted.

No cores will be taken.



**DRILLING CONTROL  
CONDITION II-B 3000 WP  
FOR AIR DRILLING OR  
WHERE NITROGEN OR AIR BLOWS ARE EXPECTED**

H<sub>2</sub>S TRIM REQUIRED  
YES ☒ NO ☐



**DRILLING CONTROL  
MATERIAL LIST - CONDITION II - B**

- |                |   |
|----------------|---|
| A              | Texaco Wellhead   |
| B              | 3000# W.P. drilling spool with a 2" minimum flanged outlet for kill line and 3" minimum flanged outlet for choke line.  |
| C              | 3000# W.P. Dual ram type preventer, hydraulic operated with 1" steel, 3000# W.P. control lines (where sub-structure height is adequate, 2 - 3000# W.P. single ram type preventers may be utilized). |
| D              | Rotating Head with fill up outlet and extended Blooe Line.  |
| 1,3,4,<br>7,8, | 2" minimum 3000# W.P. flanged full opening steel gate valve, or Halliburton Lo Torc Plug valve.   |
| 2              | 2" minimum 3000# W.P. back pressure valve.  |
| 5,6,9          | 3" minimum 3000# W.P. flanged full opening steel gate valve, or Halliburton Lo Torc Plug valve.   |
| 12             | 3" minimum schedule 80, Grade "B", seamless line pipe.  |
| 13             | 2" minimum x 3" minimum 3000# W.P. flanged cross.   |
| 10,11          | 2" minimum 3000# W.P. adjustable choke bodies.  |
| 14             | Cameron Mud Gauge or equivalent ( location optional in choke line).   |
| 15             | 2" minimum 3000# W.P. flanged or threaded full opening steel gate valve, or Halliburton Lo Torc Plug valve.   |



**TEXACO, INC.**  
MIDLAND DIVISION  
MIDLAND, TEXAS

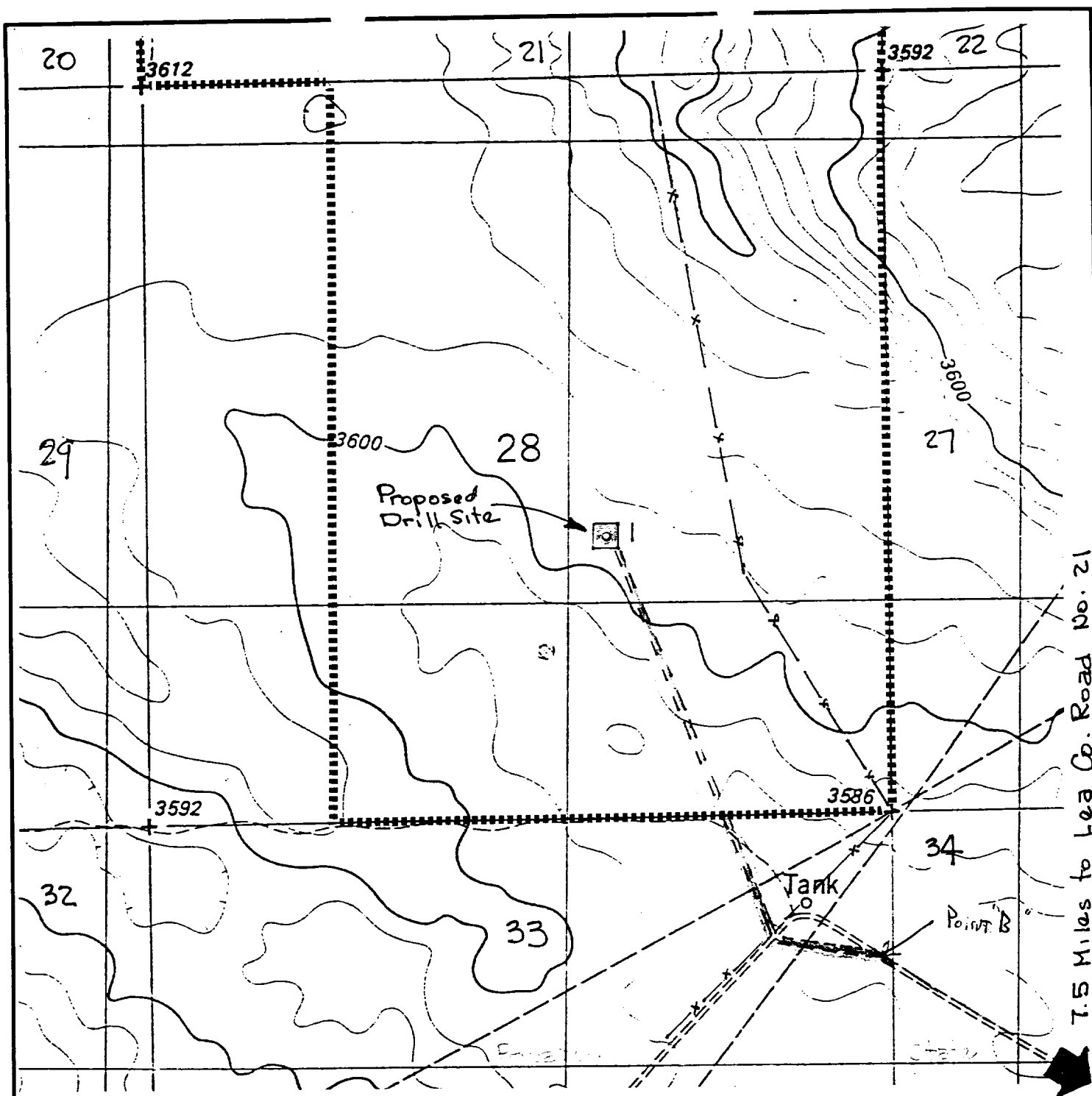


SCALE	DATE	EST NO	DRG NO
DRAWN BY			
CHECKED BY			
APPROVED BY			

**EXHIBIT C**







### LEGEND OF SYMBOLS

- — — — — Access Road (Yellow)  
 — — — — — Resource Road State Land (Pink)  
 — — — — — Resource Road Private Land (Blue)  
 — — — — — Resource Road on Lease (Brown)  
 — — — — — Proposed Resource Road (Red)  
 — — — — — Proposed Electric Line (Orange)  
 — — — — — Proposed Production Flowline (Green)  
 ○ = Staked Well Location  
 ● = Producing Well Location  
 ◇ = Water Well  
 ○ = Found 1" Iron Pipe With Brass Cap  
 ⊙ = Found 2" Iron Pipe With Brass Cap  
 ■ ■ ■ ■ ■ = Unit or Lease Boundary

### EXHIBIT "A" ACCESS ROAD AND FACILITIES MAP

### TEXACO EXPLORATION AND PRODUCTION

JIT "28" Federal No. 1  
 1980' FSL & 1980' FEL, Section 28,  
 T-22-S, R-33-E, NMPM, Lea County, NM

Drawn by: J. S. Piper

Scale: 1" = 1000 Feet

Date: May 12, 1997

C. Wade Howard

Checked by: Oscar Flores

Sheet: 6 of 8