

District I  
1625 N. French Dr., Hobbs, NM 88240  
District II  
811 South First, Artesia, NM 88210  
District III  
1000 Rio Brazos Road, Aztec, NM 87410  
District IV  
2040 South Pacheco, Santa Fe, NM 87505

State of New Mexico  
Energy Minerals and Natural Resources

Form C-101  
Revised March 17, 1999

Oil Conservation Division  
2040 South Pacheco  
Santa Fe, NM 87505

Submit to appropriate District Office  
State Lease - 6 Copies  
Fee Lease - 5 Copies

AMENDED REPORT

APPLICATION FOR PERMIT TO DRILL, RE-ENTER, DEEPEN, PLUGBACK, OR ADD A ZONE

Operator Name and Address POGO PRODUCING COMPANY P.O. BOX 10340 MIDLAND, TEXAS 79702-4345		OGRID Number 17891
		API Number 30-025-35242
Property Code 25014	Property Name SHELL STATE	Well No. 5

Surface Location

UL or lot no.	Section	Township	Range	Lot lch	Feet from the	North/South line	Feet from the	East/West line	County
K	36	22S	32E		1980'	SOUTH	2310'	WEST	LEA

Proposed Bottom Hole Location If Different From Surface

UL or lot no.	Section	Township	Range	Lot lch	Feet from the	North/South line	Feet from the	East/West line	County

Proposed Pool 1 RED TANK - BONE SPRING (51683)	Proposed Pool 2
---	-----------------

Work Type Code N	Well Type Code O	Cable/Rotary R	Lease Type Code S	Ground Level Elevation 3746'
Multiple NO	Proposed Depth 9100'	Formation BONE SPRING	Contractor UNKNOWN	Spud Date WHEN APPROVED

Proposed Casing and Cement Program

Hole Size	Casing Size	Casing weight/foot	Setting Depth	Sacks of Cement	Estimated TOC
25"	20"	Conductor	40'	Redi-mix	Surface
14 3/4"	10 3/4"	32.75	800'	750 Sx.	Circulate
9 7/8"	7 5/8"	26.4	4700'	1800 Sx.	Circulate
6 3/4"	4 1/2"	11.6	9100'	1100 Sx.	3500'± from S

Describe the proposed program. If this application is to DEEPEN or PLUG BACK, give the data on the present productive zone and proposed new productive zone. Describe the blowout prevention program, if any. Use additional sheets if necessary.

1. Drill 25" hole to 40'. Set 40' of 20" conductor pipe, cement to surface with Redi-mix.
  2. Drill 14 3/4" hole to 800'. Run and set 800' of 10 3/4" 32.75# H-40 ST&C casing. Cement with 750 Sx. of Class "C" cement + additives, circulate to surface.
  3. Drill 9 7/8" hole to 4700'. Run and set 4700' of 7 5/8" 26.4# J-55 ST&C casing. Cement with 1800 Sx. of Class "C" cement + additives, circulate cement to surface.
  4. Drill 6 3/4" hole to 9100'. Run and set 9100' of 4 1/2" 11.6# J-55 LT&C casing. Cement with 1100 Sx. of Class "H" cement in two stages, set DV Tool at 6500'±, estimate top of cement 3500'±.
- Permit Expires 1 Year From Approval  
Date Unless Drilling Underway

I hereby certify that the information given above is true and complete to the best of my knowledge and belief.

Signature: *Joe T. Janica*

Printed name: Joe T. Janica

Title: Agent

Date: \_\_\_\_\_

Phone: \_\_\_\_\_

OIL CONSERVATION DIVISION  
DISTRICT SUPERVISOR

Approved by:

Title: NOV 6 2000

Approval Date: \_\_\_\_\_ Expiration Date: \_\_\_\_\_

Conditions of Approval: \_\_\_\_\_

125

*De MP*

DISTRICT I  
P.O. Box 1980, Hobbs, NM 88241-1980

State of New Mexico  
Energy, Minerals and Natural Resources Department

Form C-102  
Revised February 10, 1994  
Submit to Appropriate District Office  
State Lease - 4 Copies  
Fee Lease - 3 Copies

DISTRICT II  
P.O. Drawer DD, Artesia, NM 88211-0719

OIL CONSERVATION DIVISION

P.O. Box 2088  
Santa Fe, New Mexico 87504-2088

DISTRICT III  
1000 Rio Brazos Rd., Artec, NM 87410

DISTRICT IV  
P.O. Box 2088, Santa Fe, NM 87504-2088

AMENDED REPORT

WELL LOCATION AND ACREAGE DEDICATION PLAT

API Number <i>30-025-35242</i>	Pool Code 51683	Pool Name RED TANK - BONE SPRING
Property Code 25014	Property Name SHELL STATE	Well Number 5
OGRID No. 17891	Operator Name POGO PRODUCING COMPANY	Elevation 3746

Surface Location

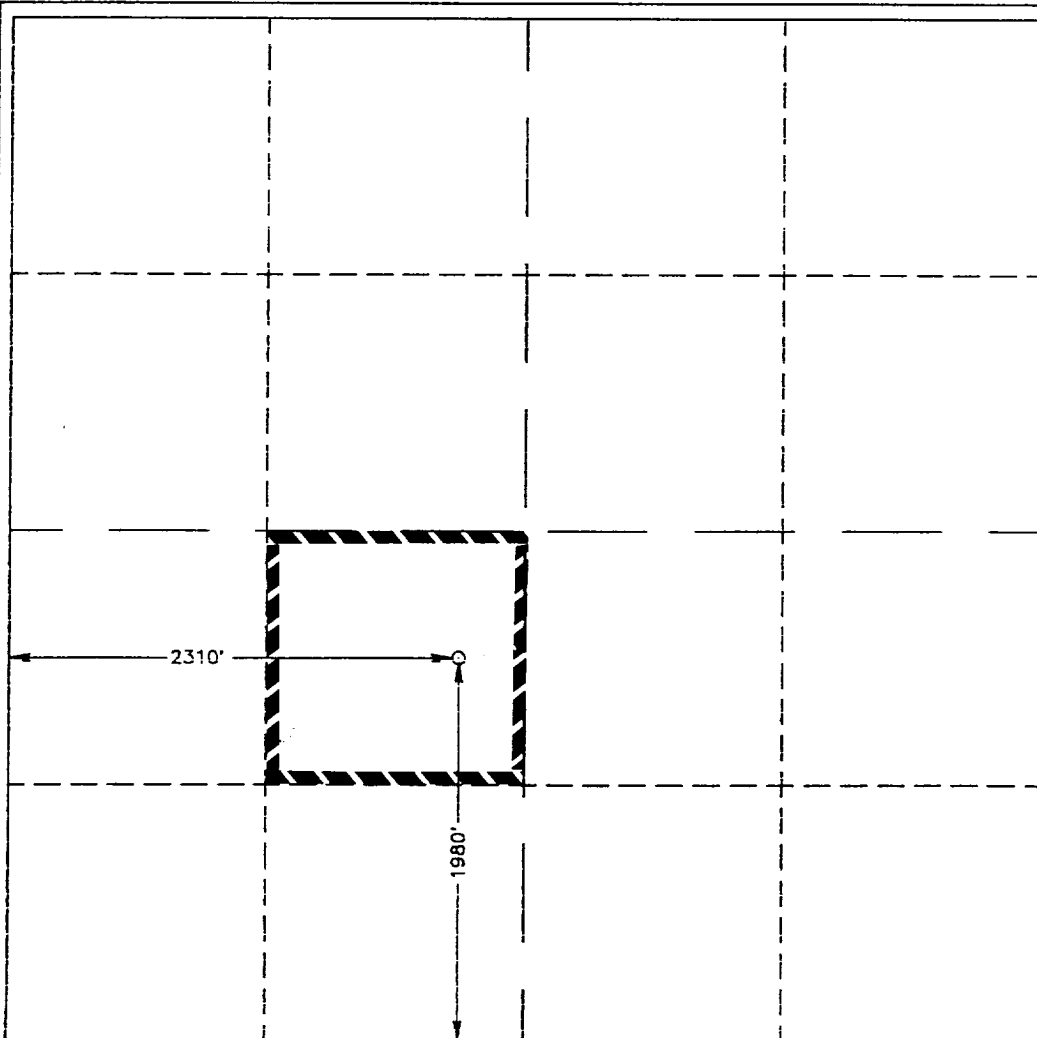
UL or lot No.	Section	Township	Range	Lot Idn	Feet from the	North/South line	Feet from the	East/West line	County
K	36	22 S	32 E		1980	SOUTH	2310	WEST	LEA

Bottom Hole Location If Different From Surface

UL or lot No.	Section	Township	Range	Lot Idn	Feet from the	North/South line	Feet from the	East/West line	County

Dedicated Acres	Joint or Infill	Consolidation Code	Order No.
40			

NO ALLOWABLE WILL BE ASSIGNED TO THIS COMPLETION UNTIL ALL INTERESTS HAVE BEEN CONSOLIDATED OR A NON-STANDARD UNIT HAS BEEN APPROVED BY THE DIVISION



**OPERATOR CERTIFICATION**

I hereby certify the the information contained herein is true and complete to the best of my knowledge and belief.

*Joe T. Janica*  
Signature

Joe T. Janica  
Printed Name

Agent  
Title

11/03/00  
Date

---

**SURVEYOR CERTIFICATION**

I hereby certify that the well location shown on this plat was plotted from field notes of actual surveys made by me or under my supervision and that the same is true and correct to the best of my belief.

NOVEMBER 1, 2000  
Date Surveyed

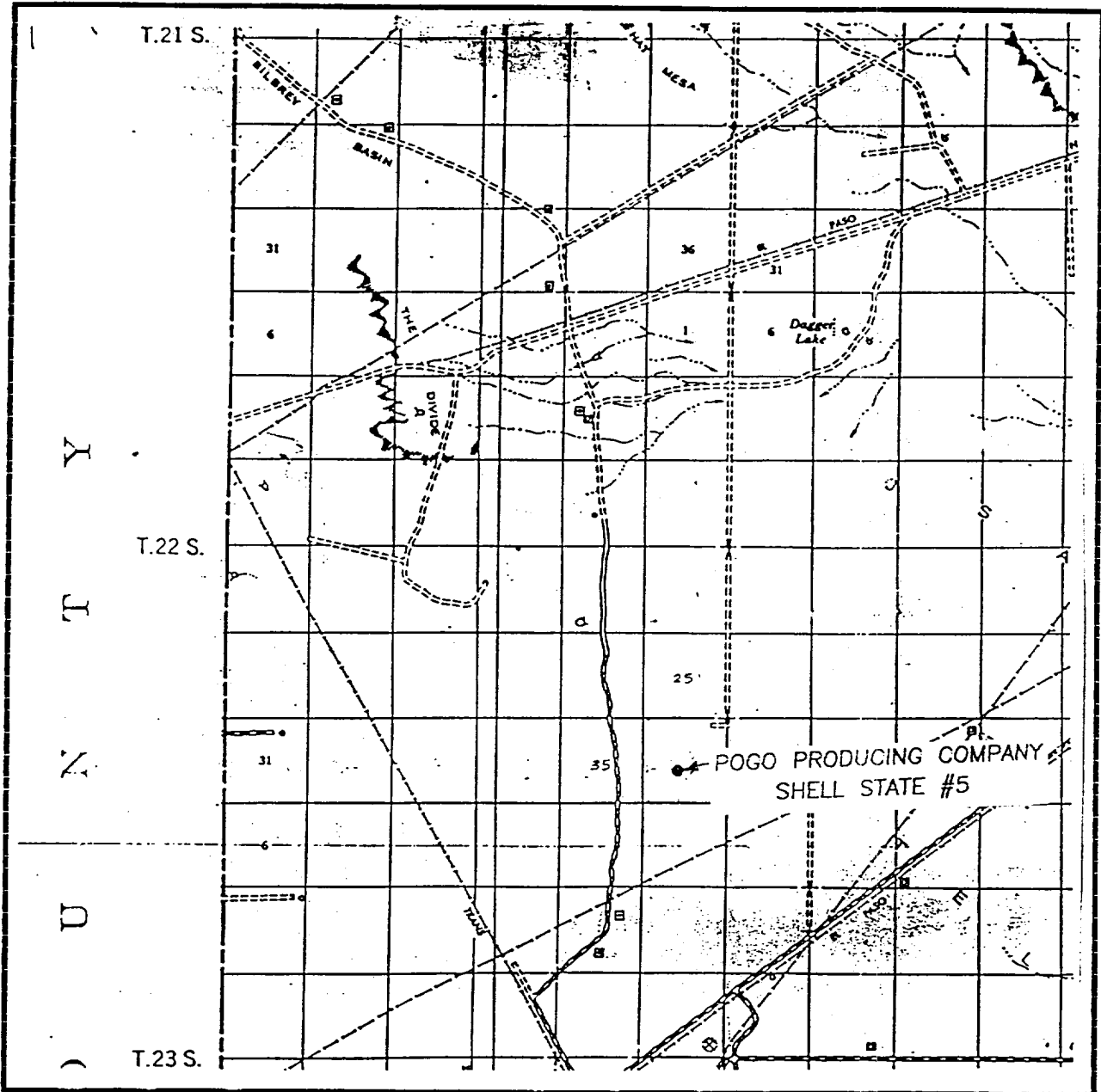
JLP

Signature & Seal of Professional Surveyor  
*Ronald J. Eidson* 11/03/00

W.O. Num 00-11-1359

Certificate No. RONALD J. EIDSON, 3239  
GARY G. EIDSON, 12841

# VICINITY MAP



SCALE: 1" = 2 MILES

SEC. 36 TWP. 22-S RGE. 32-E

SURVEY N.M.P.M.

COUNTY LEA

DESCRIPTION 1980' FSL & 2310' FWL

ELEVATION 3746

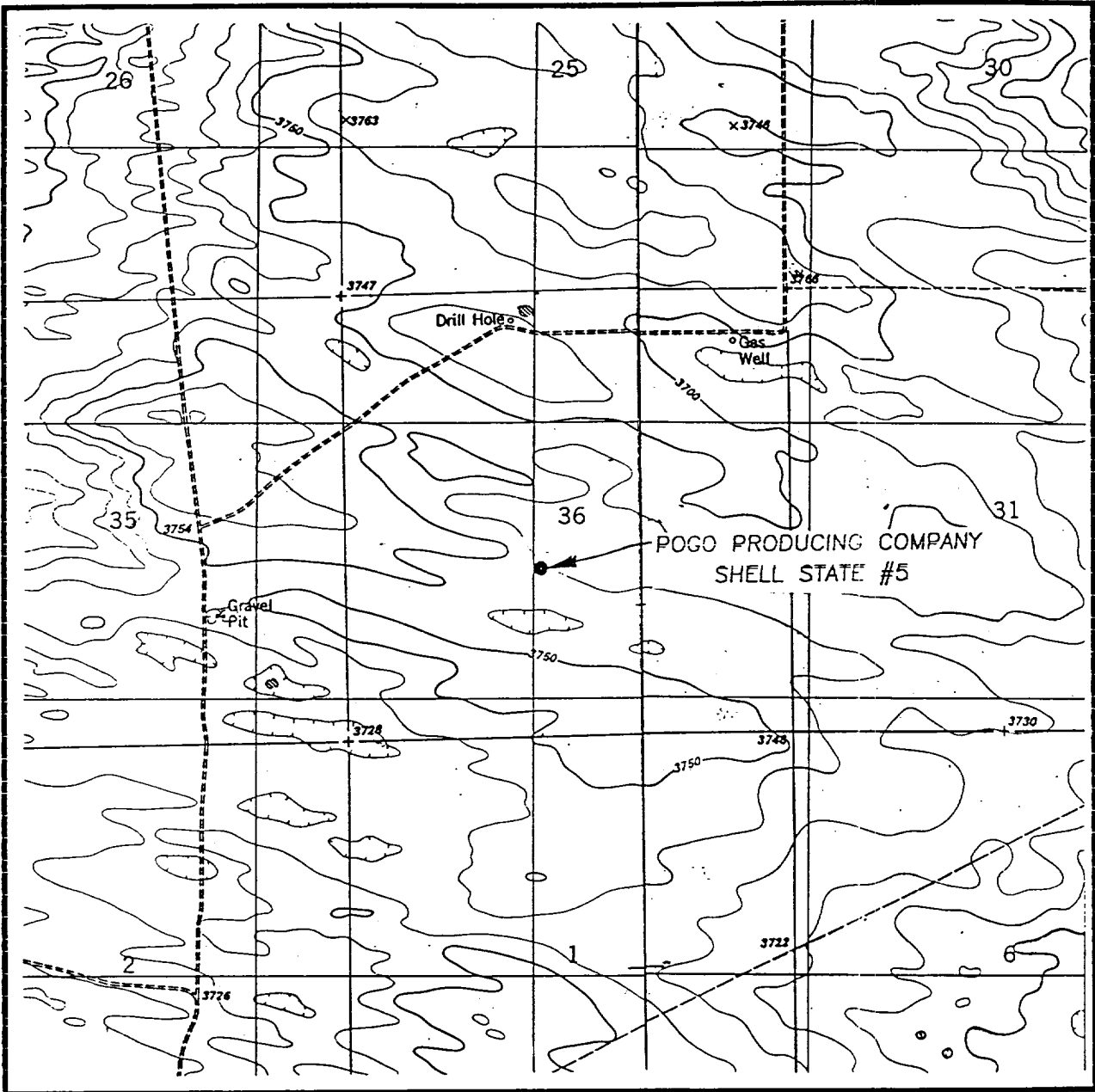
OPERATOR POGO PRODUCING COMPANY

LEASE SHELL STATE

**JOHN WEST SURVEYING  
HOBBS, NEW MEXICO**

**(505) 393-3117**

# LOCATION VERIFICATION MAP



SCALE: 1" = 2000'

CONTOUR INTERVAL - 10'

SEC. 36 TWP. 22-S RGE. 32-E

SURVEY N.M.P.M.

COUNTY LEA

DESCRIPTION 1980' FSL & 2310' FWL

ELEVATION 3746

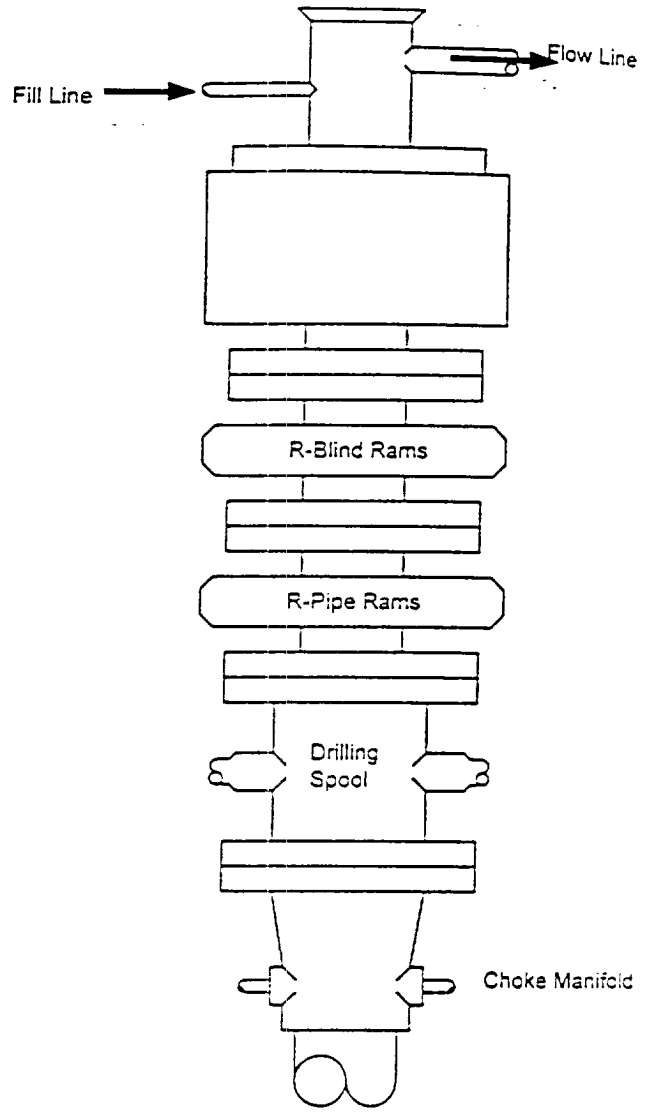
OPERATOR POGO PRODUCING COMPANY

LEASE SHELL STATE

U.S.G.S. TOPOGRAPHIC MAP  
BOOTLEG RIDGE, TIP TOP WELLS, N.M.

**JOHN WEST SURVEYING**  
**HOBBS, NEW MEXICO**  
**(505) 393-3117**

# BLOWOUT PREVENTER SYSTEM



Type 900 Series  
3000 psi WP.

## Choke Manifold Assembly for 3M WP System

