

AD
Moby

P&A PROCEDURE

Well Name: Arnott Ramsay (NCT-C) #8
API Number: 30-025-04741
Coordinates: 660 FSL & 1980' FEL, Unit O
S - T - R: 21 - 21S - 36E
County / State: Lea, New Mexico
Drilled: 1936

Operator: Chevron
Field: Eumont
Date: 8/2/01
By: DCD

Provide 24 hr Notification to NMOCD of Pending Operations

1. MI Benterra equip. Hold pre-job safety mtg and spot equipment. Check 5 1/2" csg, 75/8" x 5 1/2" and 103/4" x 75/8" annulus for pressure.
2. ND WH equip and install well control equip.
3. Check btm w/ SL. Record FL. Displace wellbore fluids w/ freshwater.
3a. SET WIPER PLUG @ 2890' - ~~2890~~ PLUG 2790-2890
4. Insert 5 1/2" wiper plug (cored to allow fluid bypass) into csg and push to 1575' w/ slickline.
5. Surface pour 14 cu ft of ZONITE to set 100' plug from 1475 - 1575', across top of salt and 75/8" csg. Set plug in stages, check w/ SL to assure bridges are not occurring and required plug height is achieved. Pour at rate that minimizes potential to bridge. After setting plug, add water as necessary to assure hydration of plug.
6. Insert 5 1/2" wiper plug (cored to allow fluid bypass) into csg and push to 600' w/ slickline. Surface pour 42 cu ft ZONITE to establish plug from 226 - 600'. This covers 103/4" shoe @ 276' and extends plug to below top of cement outside of 5 1/2" at 550'.
6a. CUT & PULL 5 1/2" @ 326' - WIPER PLUG @ 376' - (226' - 376') BENTONITE.
7. Insert & push 5 1/2" wiper plug to 30' w/ SL. Fill csg w/ ZONITE to 3' from surface (4 cu ft). Add water as needed to hydrate plug.
8. Remove well control equip, secure WH and RD equip.
9. Allow 48 hours for ZONITE to hydrate, remove WH, cut off casings 3' below GL. Also attempt to bridge 75/8" x 5 1/2" annulus w/ ZONITE before capping wellbore.
10. Install dry hole marker stamped w/ required well identification, 4" OD x 4' above GL.
11. Remove all equip and cut deadmen below GL.
12. Turn over to Chevron for any surface remediation work.

Estimated ZONITE Requirements: 65 ft³

TAG ALL PLUGS.

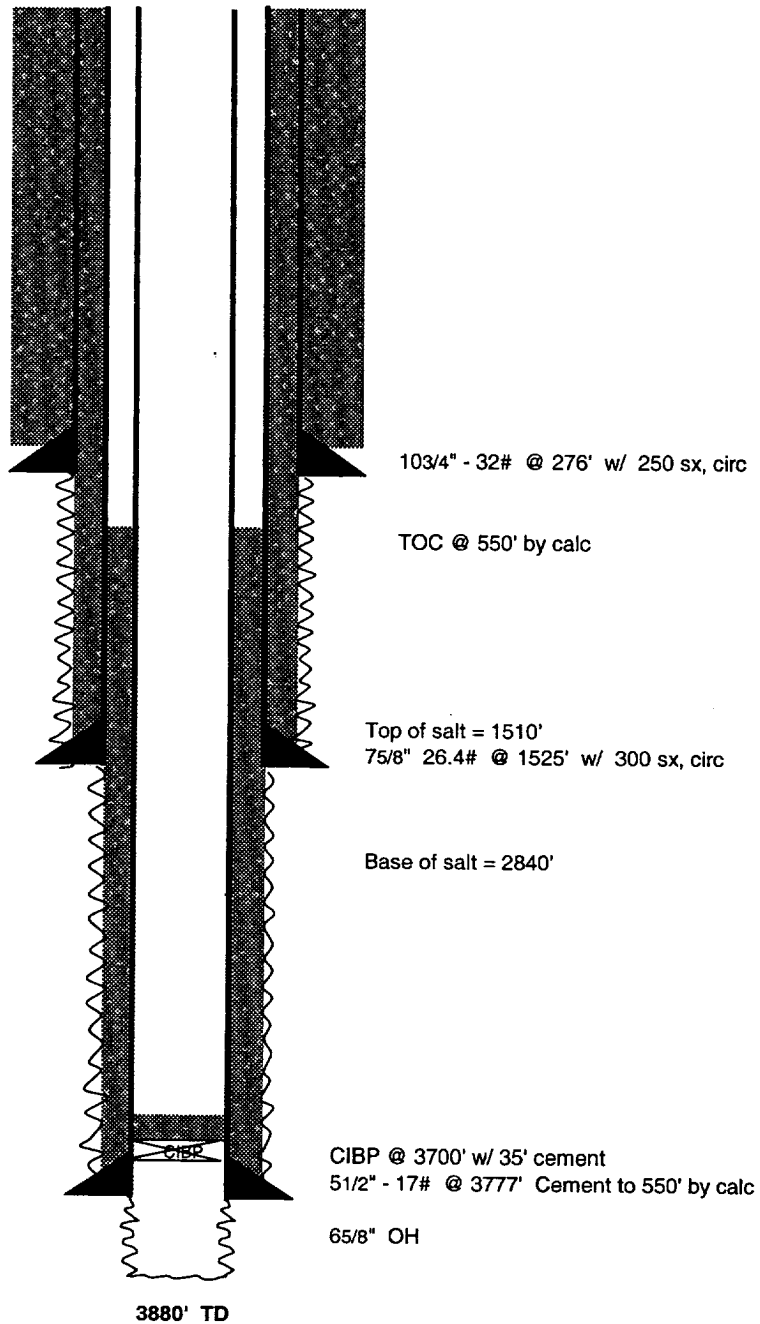
**WELL PLANNING SHEET
EXISTING CONFIGURATION**

Well Name: Amott Ramsay (NCT-C) #8
 API Number: 30-025-04741
 Coordinates: 660 FSL & 1980' FEL, Unit O
 S - T - R: 21 - 21S - 36E
 County / State: Lea, NM
 Drilled: 1936

Operator: Chevron
 Field: Eumont (Queen)
 Date: 7/31/2001
 By: M. Bondy

RKB = 6.5'

| Formation Tops | |
|----------------|-------|
| Rustler | 1420' |
| Salt | 1510' |
| Base of Salt | 2840' |
| Yates | 3140' |
| 7 Rivers | 3280' |
| Queen | 3605' |



WELL PLANNING SHEET
Proposed P&A

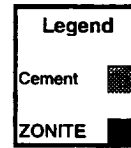
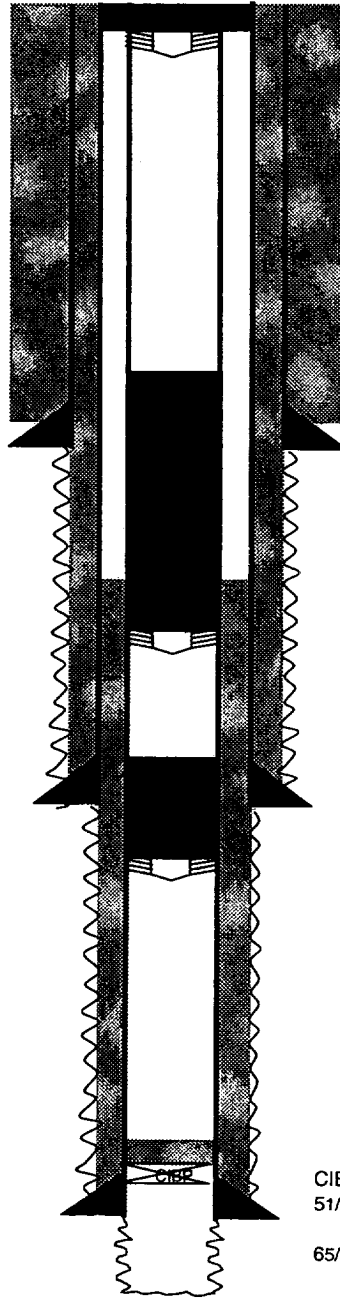
Well Name: Amott Ramsay (NCT-C) #8
 API Number: 30-025-04741
 Coordinates: 660 FSL & 1980' FEL, Unit O
 S - T - R: 21 - 21S - 36E
 County / State: Lea, NM
 Drilled: 1936

Operator: Chevron
 Field: Eumont (Queen)
 Date: 7/31/2001
 By: M. Bondy

RKB = 6.5'

| Formation Tops | |
|----------------|-------|
| Rustler | 1420' |
| Salt | 1510' |
| Base of Salt | 2840' |
| Yates | 3140' |
| 7 Rivers | 3280' |
| Queen | 3605' |

| ZONITE Plugs | |
|--------------|--|
| 3 - 30' | |
| 226 - 600' | |
| 1475 - 1575' | |



103/4" - 32# @ 276' w/ 250 sx, circ

Cut & Pull 5 1/2 @ 326'
Put w/1

Cavity shot

TOC @ 550' by calc

Top of salt = 1510'

75/8" 26.4# @ 1525' w/ 300 sx, circ

Base of salt = 2840'

BASE OF SALT - 2890' - WIDER PLUG,
2790

CIBP @ 3700' w/ 35' cement

51/2" - 17# @ 3777' Cement to 550' by calc

65/8" OH

3880' TD