

DISTRICT I

P.O. Box 1980, Hobbs, NM 88241-1980

DISTRICT II

P.O. Box Drawer DD, Artesia, NM 88211-0719

DISTRICT III

1000 Rio Brazos Rd., Aztec, NM 87410

DISTRICT IV

P.O. Box 2088, Santa Fe, NM 87504-2088

State of New Mexico

Energy, Minerals and Natural Resources Department

Form C-102

Revised February 10, 1999

Instructions on back

Submit to Appropriate District Office

State Lease - 4 Copies

Fee Lease - 3 Copies

AMENDED REPORT

OIL CONSERVATION DIVISION

P.O. Box 2088

Santa Fe, New Mexico 87504-2088

WELL LOCATION AND ACREAGE DEDICATION PLAT

1 API Number 30 025 06649	2 Pool Code 76480	3 Pool Name EUMONT YATES SEVEN RIVERS QUEEN GAS
4 Property Code 11129	5 Property Name WEATHERLY, MITTIE	6 Well No. 3
7 OGRID Number 022351	8 Operator Name TEXACO EXPLORATION & PRODUCTION INC.	9 Elevation

10 Surface Location

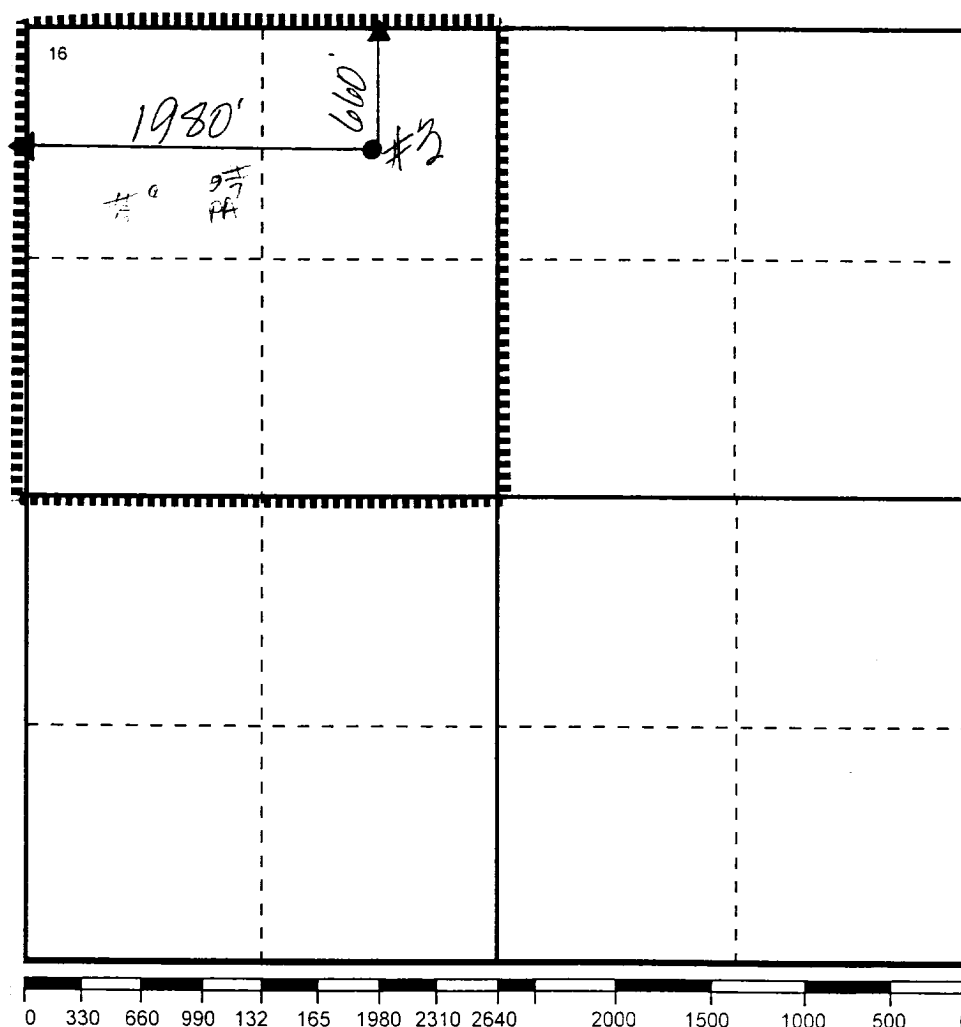
Ul or lot no	Section	Township	Range	Lot.Idn	Feet From The	North/South Line	Feet From The	East/West Line	County
C	17	21S	37E		660	NORTH	1980	WEST	LEA

11 Bottom Hole Location If Different From Surface

Ul or lot no	Section	Township	Range	Lot.Idn	Feet From The	North/South Line	Feet From The	East/West Line	County
--------------	---------	----------	-------	---------	---------------	------------------	---------------	----------------	--------

12 Dedicated Acre 160	13 Joint or Infill No	14 Consolidation Code	15 Order No.
--------------------------	--------------------------	-----------------------	--------------

NO ALLOWABLE WILL BE ASSIGNED TO THIS COMPLETION UNTIL ALL INTERESTS HAVE BEEN CONSOLIDATED
OR A NON-STANDARD UNIT HAS BEEN APPROVED BY THE DIVISION



17 OPERATOR CERTIFICATION
I hereby certify that the information contained herein is true and complete to the best of my knowledge and belief
Signature <i>J. Denise Leake</i>
Printed Name J. Denise Leake
Position Engineering Assistant
Date 4/25/01
18 SURVEYOR CERTIFICATION
I hereby certify that the well location shown on this plat was plotted from field notes of actual surveys made by me or under my supervision, and that the same is true and correct to the best of my knowledge and belief.
Date Surveyed
Signature & Seal of Professional Surveyor
Certificate No.

10-11-12

OWWO

COUNTY LEA FIELD Perdue Shell STATE NM MN 06649
 OPR TEXACO INC. MAP
 3 Weatherby, Mitche
 Sec 17, T-21-S, R-37-E CO-ORD
 660' FNL, 1980' FWL of Se.

		CLASS		EL 3494'
Re-Cmp 9-19-71	FORMATION	DATUM	FORMATION	DATUM
CSG & SX - TUBING				
13 3/8" at 314' w/325 sx				
8 5/8" at 2812' w/1500 sx				
5 1/2" at 6650' w/350 sx				
LOGS EL GR RA IND HC A				

TD 6651', PBD 3810'

IP (Grayburg) Perfs 3703-96' F 58 BOPD + 12 RW. Pot based on 24 hr test.

Distribution limited and publication prohibited by subscribers' agreement.
 Reproduction rights reserved by Williams & Lee Scouting Service, Inc.

CONT. PROP DEPTH 3800' TYPE WO
 DATE

10-5-71 F.R.C. 10-7-71; Opr's Elev. 3484' GL
 PD 3800' WO (Grayburg)
 (Orig. comp. 11-20-52 thru (Drinkard)
 Perfs 6604-45', OTD 6651', OPB 6648')
 TD 6651'; PBD 3810'; COMPLETE
 PB to 3810'
 Perf (Grayburg) 3703-15', 3727-33', 3740-49',
 3779-96' w/2 SPF
 Acid (3703-96') 1250 gals
 Frac (3703-96') 20,000 gals jelled crude
 + 20,000# sd
 10-7-71 COMPLETION REPORTED

