

3-NMOCC

Company <b>GETTY OIL COMPANY</b>		Lease No.
Location Well No. <b>A</b>	Section <b>15</b>	Twp <b>21-S</b>
Name of Lease or Pool		Type of Prod (Oil or Gas)
Upper Comp. <b>BLINEBRY</b>	<b>OIL</b>	
Lower Comp. <b>DRINKARD</b>	<b>OIL</b>	

STATE "S"	Well No. <b>8</b>
<b>37-E</b>	County <b>LEA</b>
FLOW	Prod. Medium (Tbg or Csg) <b>TUBING</b>
FLOW	<b>TUBING</b>

FLOW TEST #

Well closed at (hour, date): **8:30 A.M., 4-14-76**

Well closed at (hour, date): **8:30 A.M., 4-15-76**

Indication of flow (Yes or No) during.....

Pressure at beginning of test.....

Stabilized? (Yes or No).....

Maximum pressure during test.....

Minimum pressure during test.....

Pressure at completion of test.....

Pressure change during test (Maximum minus Minimum).....

Was pressure change an increase or a decrease?.....

Well closed at (hour, date): **8:30 A.M., 4-16-75**

Oil Production **0** Gas Production **-**  
During Test: **0** bbls./day; During Test

Remarks.....

Upper Completion

..... **XXX**

..... **25** **425**

..... **YES** **YES**

..... **25** **425**

..... **25** **30**

..... **25** **30**

..... **0** **395**

..... **NO CHANGE** **DECREASE**

Test on **24 HOURS**

**TSTM** MCF; GOR **---**

FLOW TEST #

Well closed at (hour, date): **8:30 A.M., 4-17-75**

Indication of flow (Yes or No) during.....

Pressure at beginning of test.....

Stabilized? (Yes or No).....

Maximum pressure during test.....

Minimum pressure during test.....

Pressure at completion of test.....

Pressure change during test (Maximum minus Minimum).....

Was pressure change an increase or a decrease?.....

Well closed at (hour, date): **8:30 A.M., 4-18-76**

Oil Production **0** Gas Production **-**  
During Test: **0** bbls./day; During Test

Remarks **BLINEBRY ZONE DIES.**

Upper Completion

..... **XXX**

..... **25** **310**

..... **YES** **YES**

..... **25** **310**

..... **0** **310**

..... **0** **310**

..... **25** **0**

..... **DECREASE** **NO CHANGE**

Test on **24 HOURS**

--- MCF; GOR **----**

I hereby certify that the information herein contained is true and complete to the best of my knowledge.

Approved MAY 11 1976 19  
New Mexico Oil Conservation Commission

By Jerry Sexton  
Title Exec. Dir., Supv.

GETTY OIL COMPANY

ORIGINAL CONTRACT FILE

By C.L. Wade

AREA SUPERINTENDENT

APRIL 26, 1976

Date

6 A.M.

GETTY OIL COMPANY  
STATE "S" Well No. 8  
1996 Racker break Report  
Chart no. 1

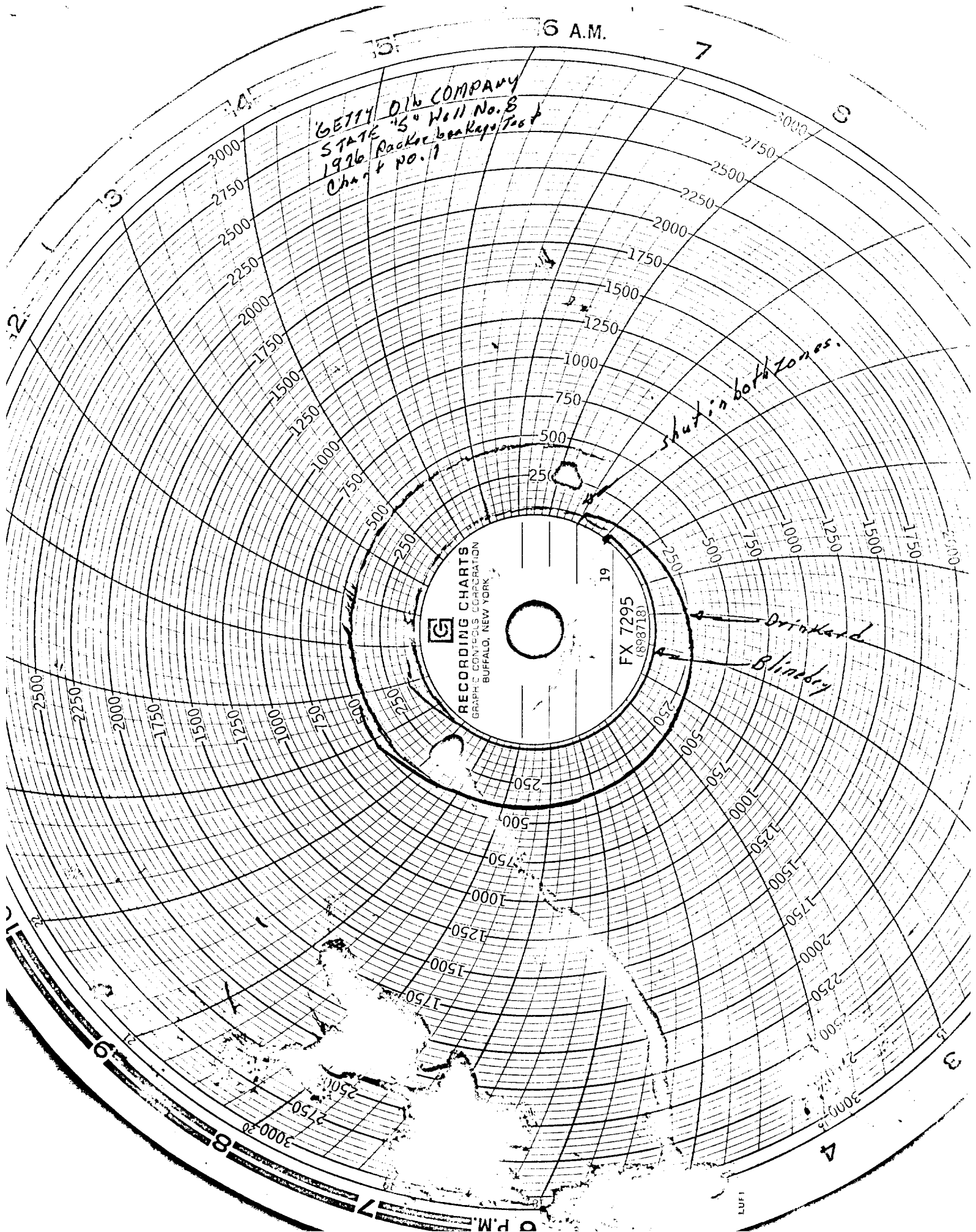
shut in both zones.

Drinkard  
Blindery

RECORDING CHARTS  
GRAPHIC CONTROLS CORPORATION  
BUFFALO, NEW YORK

FX 7295  
(898718)

19



6 P.M.

LUFF

RECEIVED

SEP 18 1978

U.S. CONSERVATION COM.  
FREET, N. D.

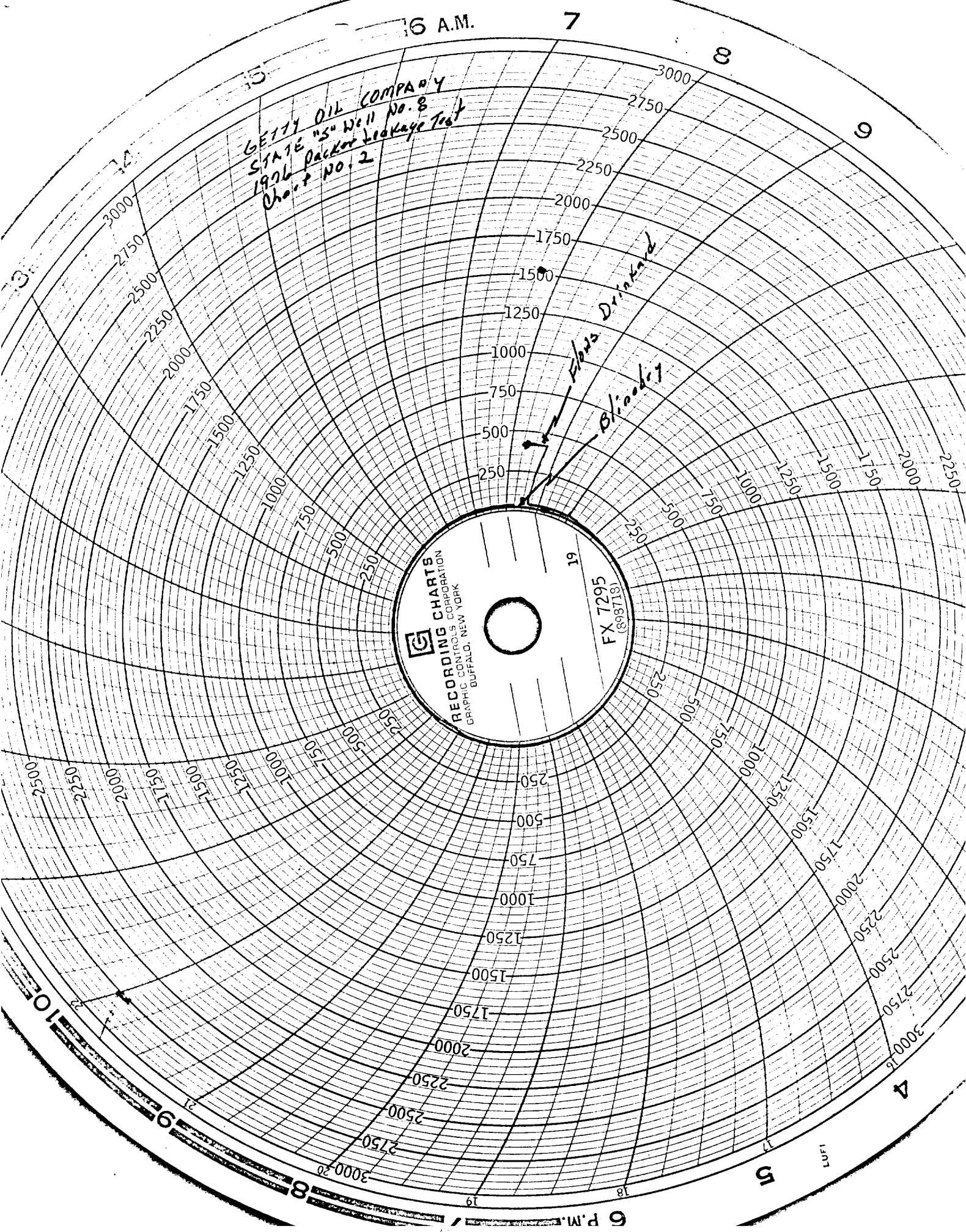
6 A.M.

7

8

9

GETTY OIL COMPANY  
STATE "35" Well No. 8  
1926 Packoff Leakage Test  
Chart No. 2



RECORDING CHARTS  
GRAPHIC CONTROLS CORPORATION  
BUFFALO, NEW YORK

19

FX 7295  
(898718)

19

10

9

8

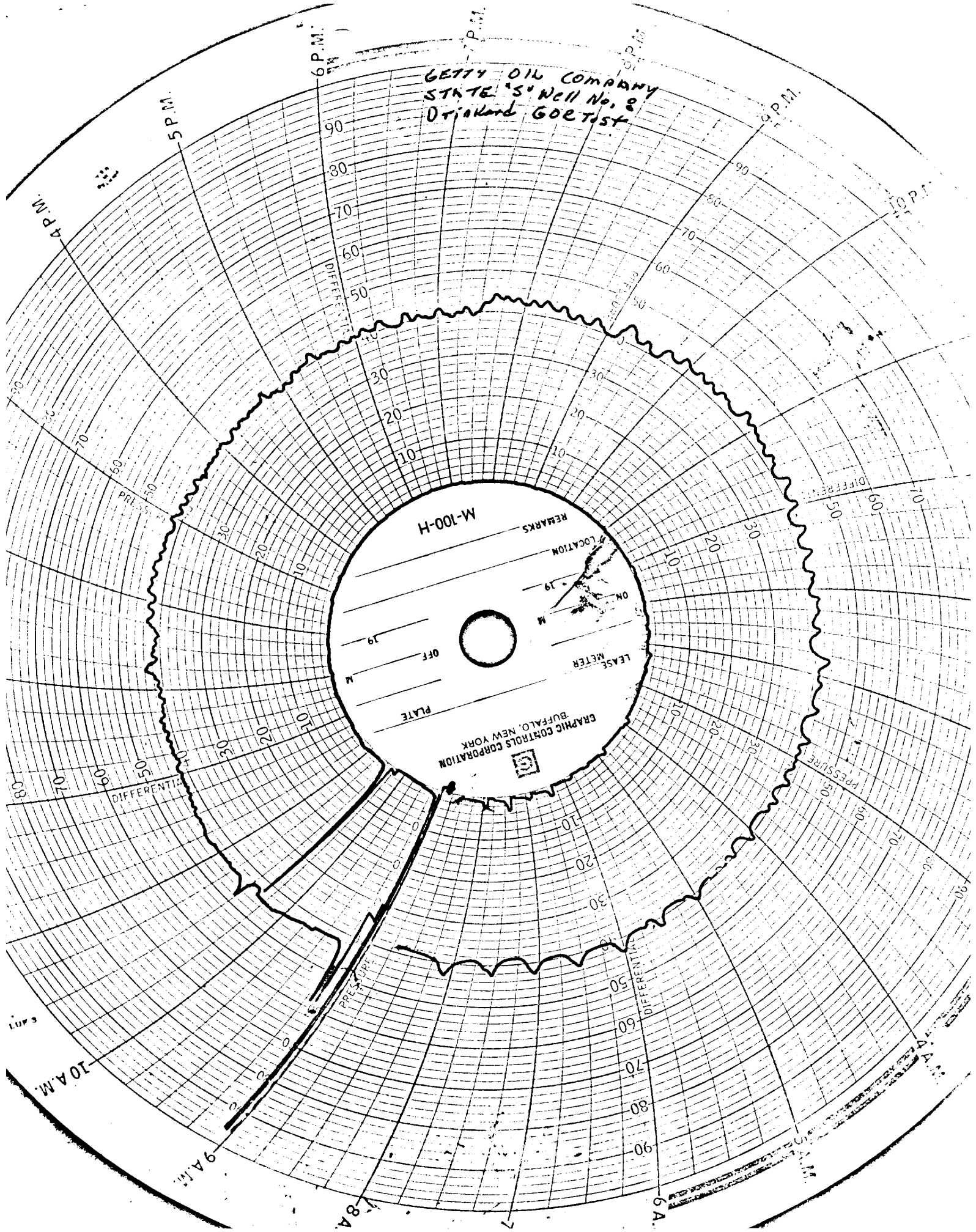
6 P.M.

5

4

LUFT

GETTY OIL COMPANY  
STATE'S Well No. 2  
Dr. Harold GOETZ



M-100-H

REMARKS

LOCATION

ON \_\_\_\_\_

OFF \_\_\_\_\_

LEASE METER \_\_\_\_\_

PLATE \_\_\_\_\_

GRAPHIC CONTROLS CORPORATION  
BUFFALO, NEW YORK

6 A.M.

7

8

9

GETTY OIL COMPANY  
STATE ST. Well No. 8  
1996 packer leakage test  
Chart No. 3

Shut-in  
Blindery

RECORDING CHARTS  
GRAPHIC CONTROLS CORPORATION  
BUFFALO, NEW YORK

19  
FX 7295  
(698718)

10

9

8

19

18

17

16

15

14

13

12

11

10

9

8

7

6

5

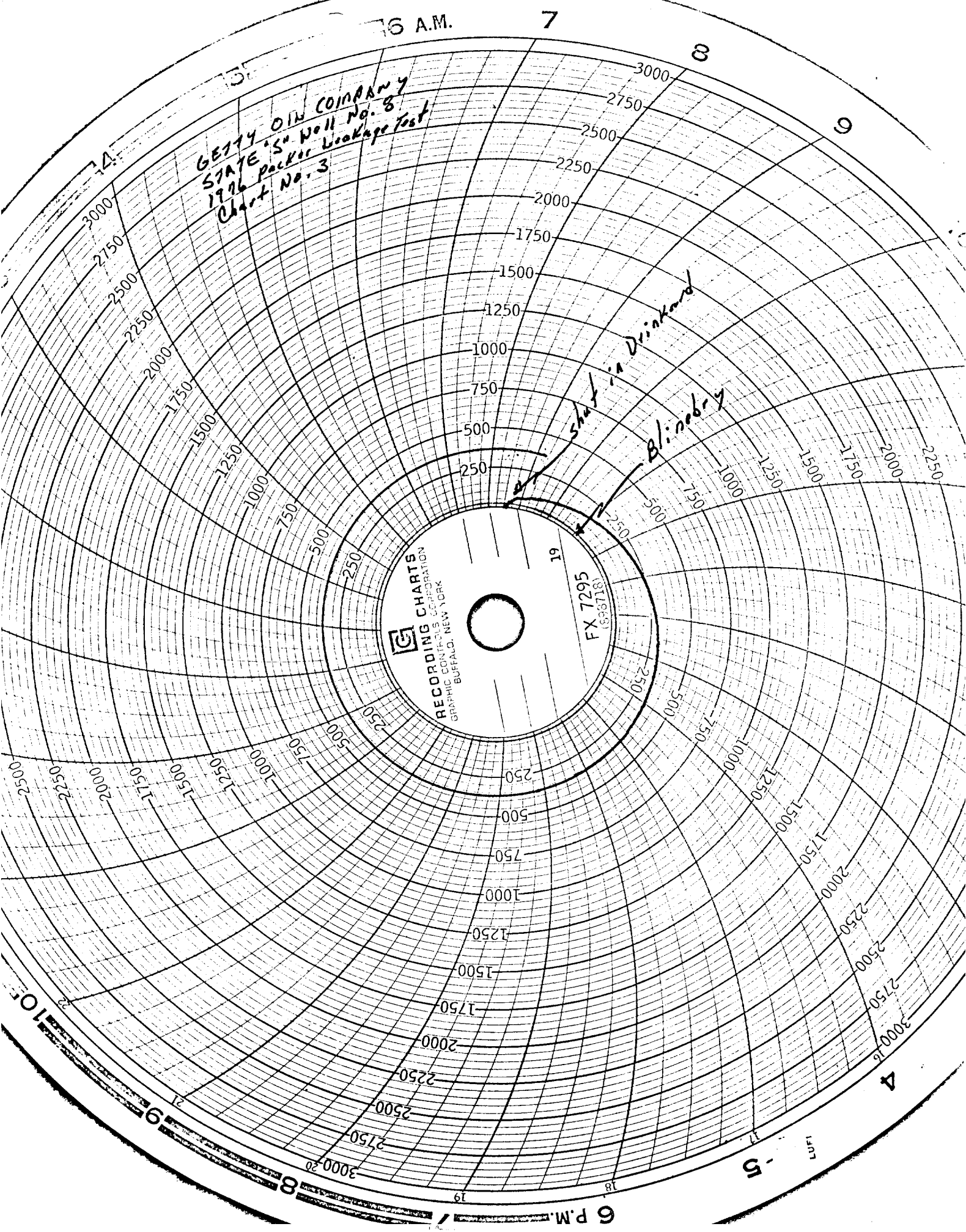
4

3

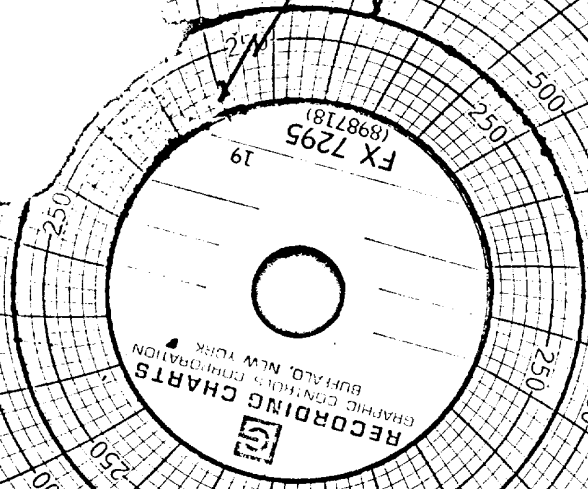
2

1

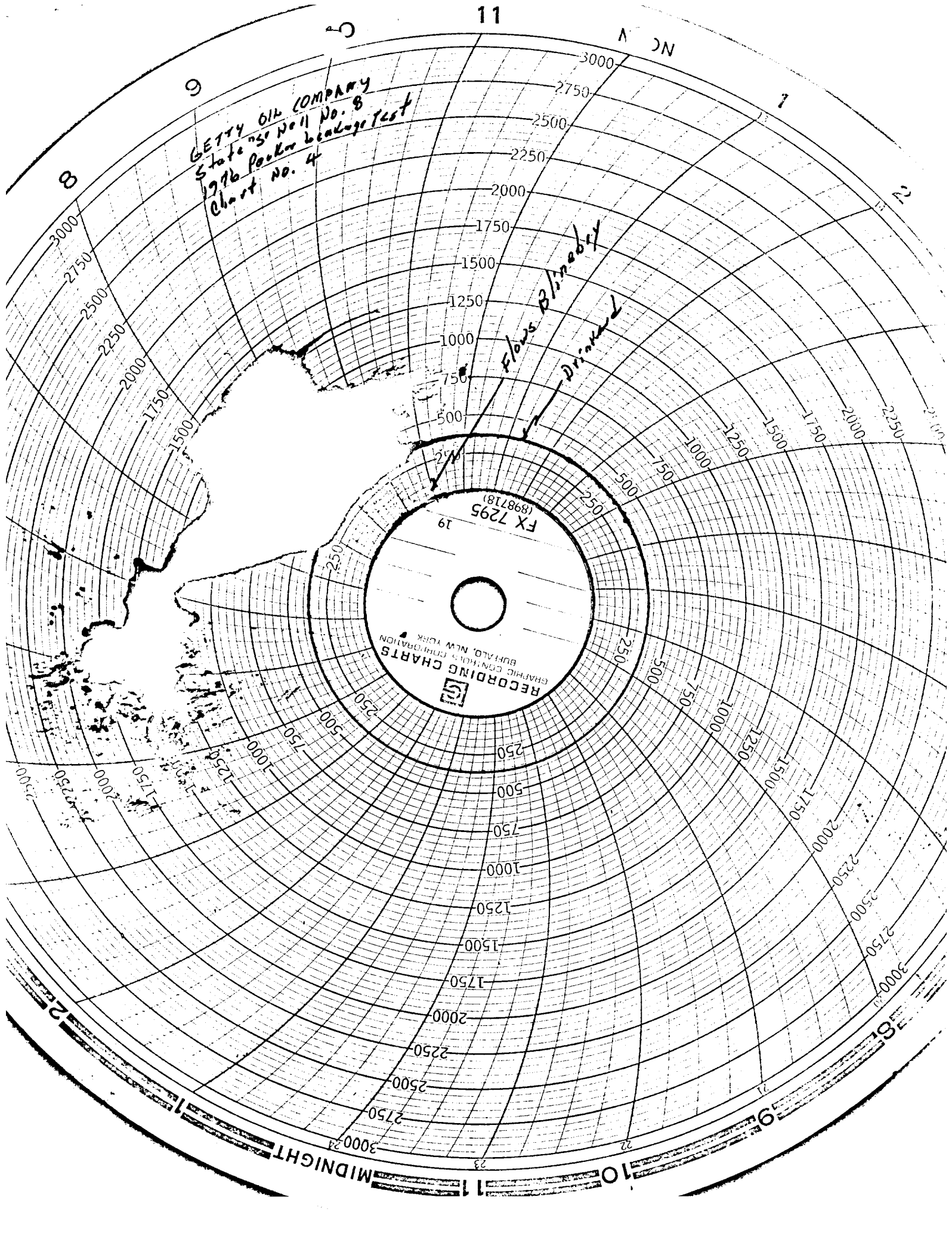
6 P.M.



GETTY OIL COMPANY  
State No. 8  
1976 Packer leakage test  
Chart No. 4



Flows Blinded  
Drilled



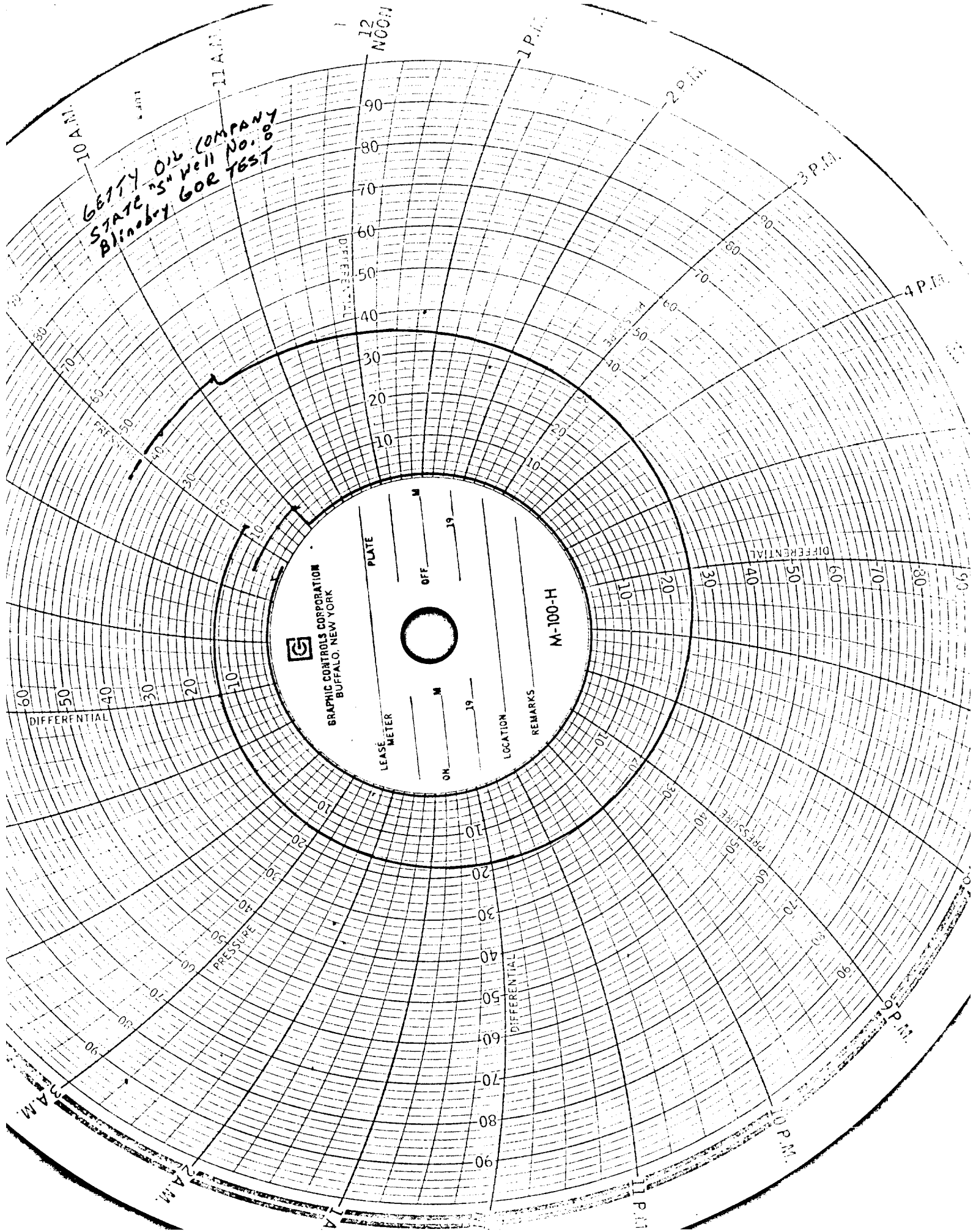
RECEIVED

APR 28 1976

U.S. CONGRESSIONAL COMMISSION  
ON ASSASSINATIONS



GETTY OIL COMPANY  
STATE "S" Well No. 8  
Blinoboy 60R T6ST



GRAPHIC CONTROLS CORPORATION  
BUFFALO, NEW YORK

M-100-H

LEASE METER \_\_\_\_\_  
ON \_\_\_\_\_ M \_\_\_\_\_  
OFF \_\_\_\_\_ M \_\_\_\_\_  
PLATE \_\_\_\_\_  
LOCATION \_\_\_\_\_  
REMARKS \_\_\_\_\_

10 A.M. 11 A.M. 12 NOON 1 P.M. 2 P.M. 3 P.M. 4 P.M. 5 P.M. 6 P.M. 7 P.M. 8 P.M. 9 P.M. 10 P.M.

DIFFERENTIAL 10 20 30 40 50 60 70 80 90

PRESSURE 10 20 30 40 50 60 70 80 90