

NO. OF COPIES RECEIVED	
DISTRIBUTION	
SANTA FE	
FILE	
U.S.G.S.	
LAND OFFICE	
OPERATOR	

NEW MEXICO OIL CONSERVATION COMMISSION

Form C-101  
Revised 1-1-65

SEP 27 11 15 AM '65

5A. Indicate Type of Lease	
STATE <input checked="" type="checkbox"/>	FEE <input type="checkbox"/>
5. State Oil & Gas Lease No. <b>OG 2304</b>	
7. Unit Agreement Name <b>None</b>	
8. Farm or Lease Name <b>Humble State</b>	
9. Well No. <b>2</b>	
10. Field and Pool, or Wildcat <b>Lynch</b>	
12. County <b>Lee</b>	
19. Proposed Depth <b>3800'</b>	19A. Formation <b>Yates-7 Rivers</b>
20. Rotary or C.T. <b>rotary 8-1510'</b> <b>c.t. 1510-3800'</b>	
21. Elevations (Show whether DF, RT, etc.) <b>3801 GL</b>	22. Approx. Date Work will start <b>September 25, 1965</b>

APPLICATION FOR PERMIT TO DRILL, DEEPEN, OR PLUG BACK

1a. Type of Work	
b. Type of Well OIL WELL <input checked="" type="checkbox"/> GAS WELL <input type="checkbox"/> OTHER <input type="checkbox"/>	
2. Name of Operator <b>Charles B. Road</b>	
3. Address of Operator <b>Box 1822, Roswell, New Mexico</b>	
4. Location of Well UNIT LETTER <b>O</b> LOCATED <b>2970</b> FEET FROM THE <b>South</b> LINE AND <b>2310</b> FEET FROM THE <b>East</b> LINE OF SEC. <b>2</b> TWP. <b>21S</b> RGE. <b>31E</b> NMPM	
19. Proposed Depth <b>3800'</b>	
19A. Formation <b>Yates-7 Rivers</b>	
20. Rotary or C.T. <b>rotary 8-1510'</b> <b>c.t. 1510-3800'</b>	
21. Elevations (Show whether DF, RT, etc.) <b>3801 GL</b>	
21A. Kind & Status Plug. Bond <b>Statewide</b>	
21B. Drilling Contractor <b>Cactus Drilling Co.</b>	
22. Approx. Date Work will start <b>September 25, 1965</b>	

PROPOSED CASING AND CEMENT PROGRAM

SIZE OF HOLE	SIZE OF CASING	WEIGHT PER FOOT	SETTING DEPTH	SACKS OF CEMENT	EST. TOP
15"	11-3/4"	42#	350'	350 sz	circ. to sur.
11"	8-5/8"	24#	1510'	made to 8" pull	
8"	6-1/2"	9.5#	3825'	100 sz	

Base of salt

APPROVAL VALID  
FOR 90 DAYS UNLESS  
DRILLING COMMENCED.  
EXPIRES **Dec 27, 1965**

IN ABOVE SPACE DESCRIBE PROPOSED PROGRAM: IF PROPOSAL IS TO DEEPEN OR PLUG BACK, GIVE DATA ON PRESENT PRODUCTIVE ZONE AND PROPOSED NEW PRODUCTIVE ZONE. GIVE BLOWOUT PREVENTER PROGRAM, IF ANY.

I hereby certify that the information above is true and complete to the best of my knowledge and belief.

Signed *Charles B. Road* Title Operator Date 9/26/65

(This space for State Use)

APPROVED BY *Joe [Signature]* TITLE  DATE

CONDITIONS OF APPROVAL, IF ANY:

See above

NEW MEXICO OIL CONSERVATION COMMISSION  
WELL LOCATION AND ACREAGE DEDICATION PLAT

Form C-102  
Supersedes C-128  
Effective 1-1-65

All distances must be from the outer boundaries of the Section.

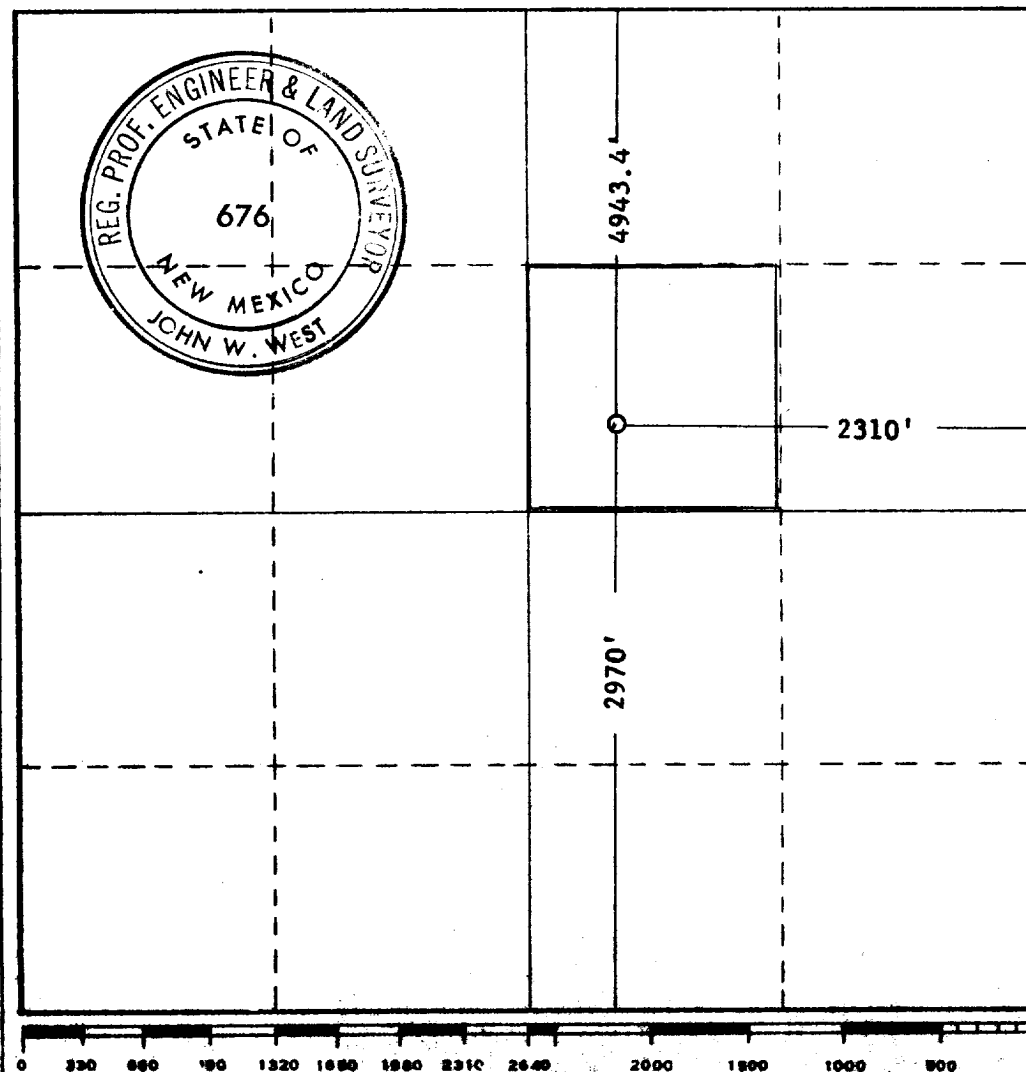
Operator <b>CHARLES B. READ</b>			Lease <b>HUMBLE STATE</b>		Well No. <b>2</b>
Unit Letter <b>O</b>	Section <b>2</b>	Township <b>21 SOUTH</b>	Range <b>33 EAST</b>	County <b>LEA</b>	
Actual Footage Location of Well: <b>2970</b> feet from the <b>SOUTH</b> line and <b>2310</b> feet from the <b>EAST</b> line					
Ground Level Elev. <b>3801'</b>	Producing Formation <b>Yates - Seven Rivers</b>		Pool <b>Lynch</b>	Dedicated Acreage: <b>40</b> Acres	

1. Outline the acreage dedicated to the subject well by colored pencil or hachure marks on the plat below.
2. If more than one lease is dedicated to the well, outline each and identify the ownership thereof (both as to working interest and royalty).
3. If more than one lease of different ownership is dedicated to the well, have the interests of all owners been consolidated by communitization, unitization, force-pooling, etc?

☐ Yes ☐ No If answer is "yes," type of consolidation \_\_\_\_\_

If answer is "no," list the owners and tract descriptions which have actually been consolidated. (Use reverse side of this form if necessary.) \_\_\_\_\_

No allowable will be assigned to the well until all interests have been consolidated (by communitization, unitization, forced-pooling, or otherwise) or until a non-standard unit, eliminating such interests, has been approved by the Commission.



CERTIFICATION

I hereby certify that the information contained herein is true and complete to the best of my knowledge and belief.

*Charles B. Read*  
Name

Operator

Position

Charles B. Read

Company

September 24, 1965

Date

I hereby certify that the well location shown on this plat was plotted from field notes of actual surveys made by me or under my supervision, and that the same is true and correct to the best of my knowledge and belief.

Date Surveyed

SEPT. 24, 1965

Registered Professional Engineer and/or Land Surveyor

*John W. West*  
Certificate No.

676