

NEW MEXICO OIL CONSERVATION COMMISSION
WELL LOCATION AND ACREAGE DEDICATION

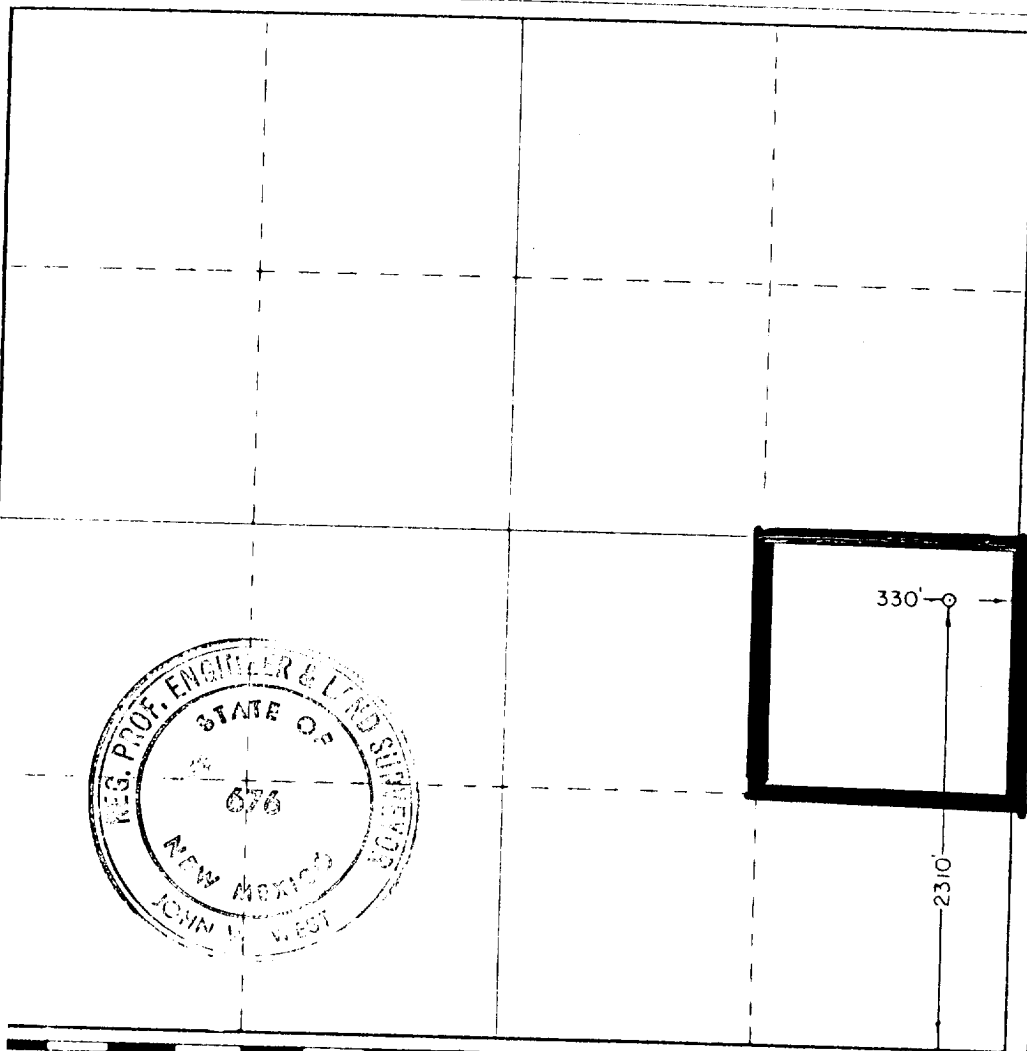
Form O-112
Supersedes C-128
Effective 1-1-65

All distances must be from the outer boundaries of the Section

DOYLE HARTMAN			J. K. RECTOR			Well No. 1		
Section	Range	Township	Block	County				
1	30	21 SOUTH	36 EAST	LEA				
2310		SOUTH		310		EAST		
3429.5		Yates-Seven Rivers		Eumont		40		
		Queen-Penrose						

- Outline the acreage dedicated to the subject well by colored pencil or hachure marks on the plat below.
- If more than one lease is dedicated to the well, outline each and identify the ownership thereof (both as to working interest and royalty)
- If more than one lease of different ownership is dedicated to the well, have the interests of all owners been consolidated by communitization, unitization, force-pooling, etc?
 Yes No If answer is "yes," type of consolidation _____

If answer is "no," list the owners and tract descriptions which have actually been consolidated (Use reverse side of this form if necessary) _____
 No allowable will be assigned to the well until all interests have been consolidated (by communitization, unitization, forced-pooling, or otherwise) or until a non-standard unit, eliminating such interests, has been approved by the Commission.



CERTIFICATION

I hereby certify that the information contained herein is true and complete to the best of my knowledge and belief.

Doyle Hartman
 Doyle Hartman
 Operator
 Individual
 August 16, 1979

I hereby certify that the well location shown on this plat was plotted from field notes of actual surveys made by me or under my supervision, and that the same is true and correct to the best of my knowledge and belief.

Date Certified: JULY 12TH, 1979
 Registered Professional Engineer and Land Surveyor
John W. West
 Certificate No. John W. West 676
 Ronald J. Eidson 3239

