

District I
1625 N. French Dr., Hobbs, NM 88240
District II
811 S. 1st Street, Artesia, NM 88210
District III
1000 Rio Brazos Rd., Aztec, NM 87410
District IV
2040 South Pacheco, Santa Fe, NM 87505

Oil Conservation Division
2040 South Pacheco
Santa Fe, NM 87505

Submit to appropriate District Office
State Lease - 6 Copies
Fee Lease - 5 Copies

AMENDED REPORT

APPLICATION FOR PERMIT TO DRILL, RE-ENTER, DEEPEN, PLUGBACK, OR ADD A ZONE

¹ Operator Name and Address Chevron U.S.A. Inc. P.O. Box 1150 MIDLAND, TX 79702		² OGRID Number 4323
⁴ Property Code 2571	⁵ Property Name ARROWHEAD GRAYBURG UNIT	³ API Number 30-025-34843
		⁶ Well No. 330

⁷ Surface Location

UL or lot no.	Section	Township	Range	Lot. Idn	Feet from the	North/South Line	Feet from the	East/West line	County
M	36	21S	36E		1281	SOUTH	1310	WEST	LEA

⁸ Proposed Bottom Hole Location If Different From Surface

UL or lot no.	Section	Township	Range	Lot. Idn	Feet from the	North/South Line	Feet from the	East/West line	County

⁹ Proposed Pool 1

ARROWHEAD; GRAYBURG 03040

¹⁰ Proposed Pool 2

¹¹ Work Type Code N	¹² Well Type Code O	¹³ Cable/Rotary ROTARY	¹⁴ Lease Type Code S	¹⁵ Ground Level Elevation 3532'
¹⁶ Multiple	¹⁷ Proposed Depth 3850'	¹⁸ Formation GRAYBURG	¹⁹ Contractor UNKNOWN	²⁰ Spud Date 2/4/99

²¹ Proposed Casing and Cement Program

Hole Size	Casing Size	Casing weight/foot	Setting Depth	Sacks of Cement	Estimated TOC
12-1/4"	9-5/8"	36	500'	300	SURF
8-3/4"	7"	20	3850'	750	SURF

²² Describe the proposed program. If this application is to DEEPEN or PLUG BACK, give the data on the present productive zone and proposed new productive zone. Describe the blowout prevention program, if any. Use additional sheets if necessary.

CHEVRON PROPOSES TO:

DRILL 12-1/4" HOLE TO 500', RUN 9-5/8" CSG. CMT W/CLASS "C" TO SURF.
DRILL 8-3/4" HOLE TO 3850', RUN 7" CSG. CMT W/CLASS "C" TO SURF.

MUD PROGRAM: 0' - 500' 8.4 PPG FRESH WATER
500' - 3850' 10.0 PPG BRINE WATER

Permit Expires 1 Year from approval
Date Unless Drilling Underway

CHEVRON CLASS II BOPE

²³ I hereby certify that the information given above is true and complete to the best of my knowledge and belief.

Signature: *J. K. Ripley*

Printed name: **J. K. RIPLEY**

Title: **REGULATORY O.A.**

Date: **12/30/99**

Phone: **(915) 687-7148**

OIL CONSERVATION DIVISION

Approved by: *J. K. Ripley*
Title: **DISTRICT SUPERVISOR**

Approval Date: **12/30/99** Expiration Date:

Conditions of Approval:

Attached

5
C
3

Handwritten initials

DISTRICT I
P.O. Box 1000, Hobbs, NM 88241-1000

DISTRICT II
P.O. Drawer 80, Artesia, NM 88211-0710

DISTRICT III
1000 Rio Brazos Rd., Artesia, NM 87410

DISTRICT IV
P.O. Box 2000, Santa Fe, N.M. 87504-2000

State of New Mexico
Energy, Minerals and Natural Resources Department

Form C-102
Revised February 10, 1994
Submit to Appropriate District Office
State Lease - 4 Copies
Fee Lease - 3 Copies

OIL CONSERVATION DIVISION
P.O. Box 2088
Santa Fe, New Mexico 87504-2088

AMENDED REPORT

WELL LOCATION AND ACREAGE DEDICATION PLAT

API Number 30-025-34843	Pool Code 03040	Pool Name ARROWHEAD; GRAYBURG
Property Code 2571	Property Name AGU	Well Number 330
OGRID No. 4323	Operator Name CHEVRON U.S.A. PRODUCTION COMPANY	Elevation 3532

Surface Location

UL or lot No.	Section	Township	Range	Lot Idn	Feet from the	North/South line	Feet from the	East/West line	County
M	36	21 S	36 E		1281	SOUTH	1310	WEST	LEA

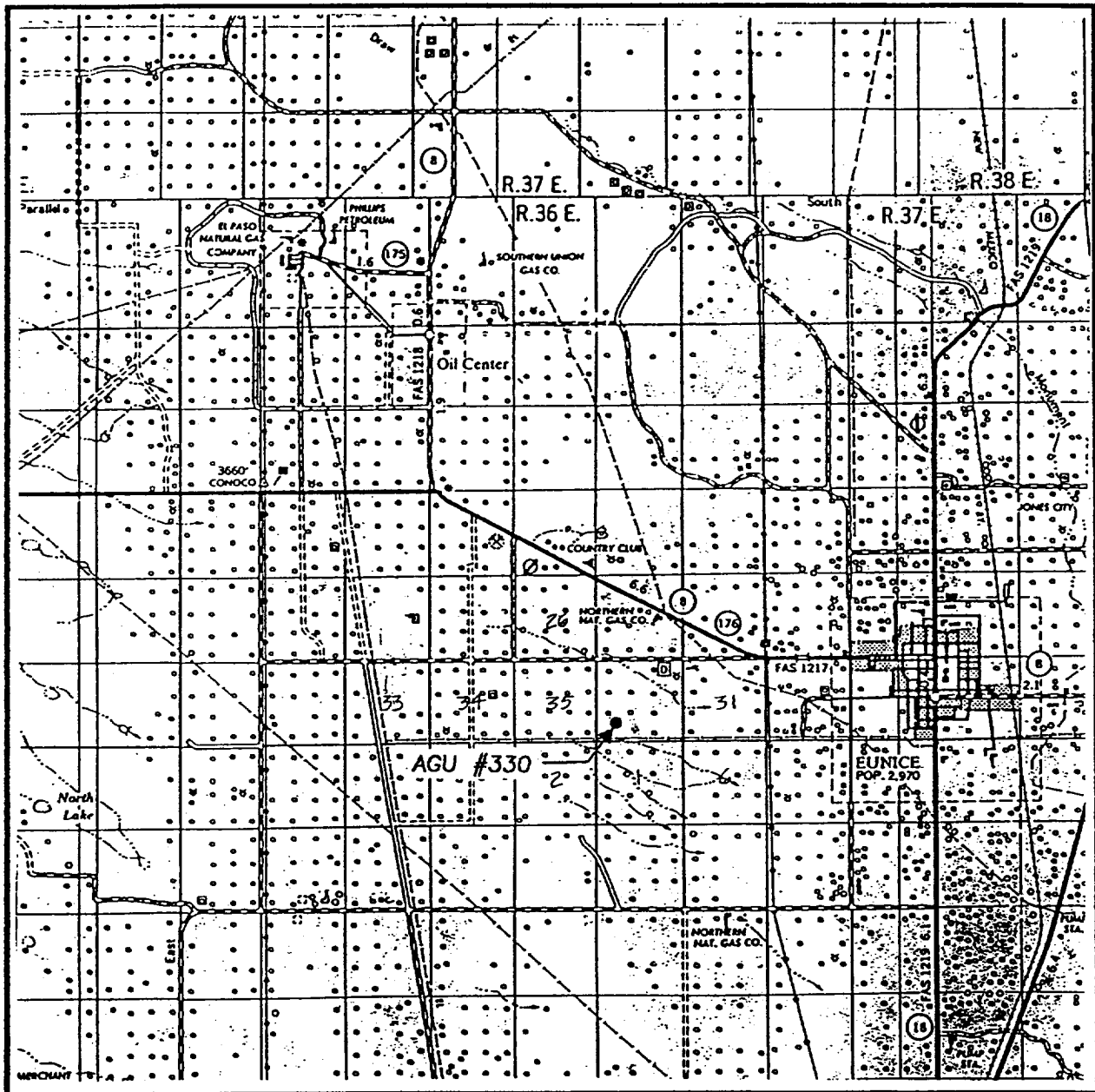
Bottom Hole Location if Different From Surface

UL or lot No.	Section	Township	Range	Lot Idn	Feet from the	North/South line	Feet from the	East/West line	County
Dedicated Acres 40		Joint or Infill	Consolidation Code		Order No.				

NO ALLOWABLE WILL BE ASSIGNED TO THIS COMPLETION UNTIL ALL INTERESTS HAVE BEEN CONSOLIDATED OR A NON-STANDARD UNIT HAS BEEN APPROVED BY THE DIVISION

	<p>OPERATOR CERTIFICATION</p> <p>I hereby certify the information contained herein is true and complete to the best of my knowledge and belief.</p> <p><i>J. K. Ripley</i> Signature J. K. RIPLEY Printed Name REGULATORY O.A. Title Date 1/4/00</p>	
	<p>SURVEYOR CERTIFICATION</p> <p>I hereby certify that the well location shown on this plat was plotted from field notes of actual surveys made by me or under my supervision, and that the same is true and correct to the best of my belief.</p> <p>DECEMBER 16, 1999</p> <p>Date Surveyed _____ LMP</p> <p>Signature & Seal of Professional Surveyor <i>Ronald O. Edson</i> RONALD O. EDSON 19-11-1072 12-20-99</p>	
	<p>Certificate No. RONALD O. EDSON 3239 GARY EDSON 12641 WILSON WEDONALD 12185</p>	
	<p>Professional Surveyor NEW MEXICO</p>	

VICINITY MAP

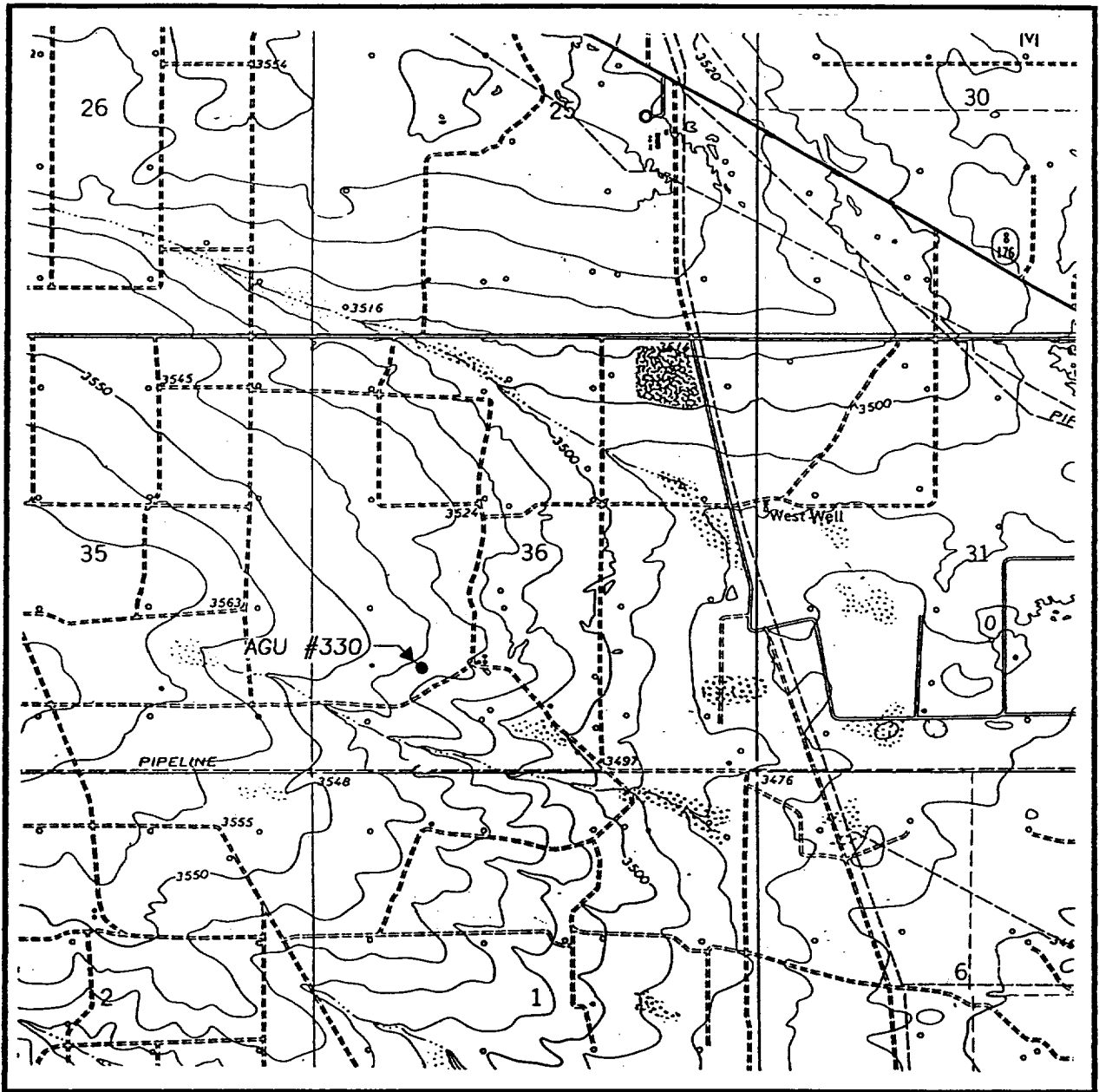


SCALE: 1" = 2 MILES

SEC. 36 TWP. 21-S RGE. 36-E
 SURVEY N.M.P.M.
 COUNTY LEA
 DESCRIPTION 1281' FSL & 1310' FWL
 ELEVATION 3532
 OPERATOR CHEVRON U.S.A. PRODUCTION COMPANY
 LEASE AGU

JOHN WEST SURVEYING
HOBBS, NEW MEXICO
(505) 393-3117

LOCATION VERIFICATION MAP



SCALE: 1" = 2000'

CONTOUR INTERVAL:
EUNICE, N.M. - 10'

SEC. 36 TWP. 21-S RGE. 36-E

SURVEY N.M.P.M.

COUNTY LEA

DESCRIPTION 1281' FSL & 1310' FWL

ELEVATION 3532

OPERATOR CHEVRON U.S.A.
PRODUCTION COMPANY

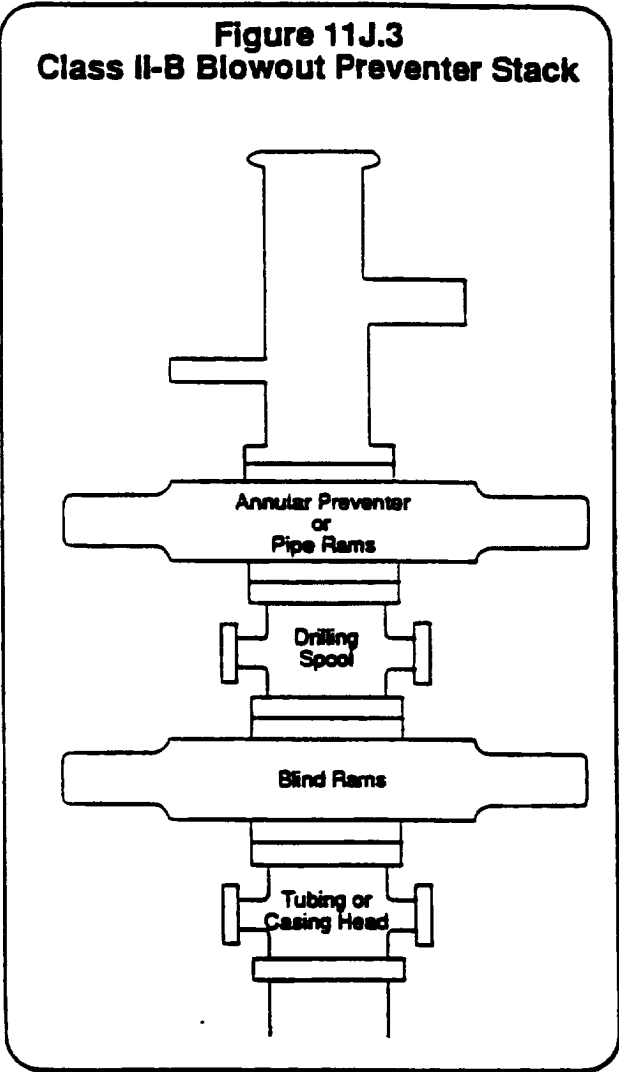
LEASE AGU

**JOHN WEST SURVEYING
HOBBS, NEW MEXICO
(505) 393-3117**

U.S.G.S. TOPOGRAPHIC MAP
EUNICE, N.M.

CHEVRON DRILLING REFERENCE SERIES
VOLUME ELEVEN
WELL CONTROL AND BLOWOUT PREVENTION

D. CLASS II-B BLOWOUT PREVENTER STACK:



The Class II-B preventer stack is designed for drilling or workover operations. It is composed of a single hydraulically operated annular preventer on top, then a drilling spool, and a single blind ram preventer on bottom. In an alternate configuration, a single pipe ram preventer may be substituted for the annular preventer. The choke and kill lines are installed onto the drilling spool and must have a minimum internal diameter of 2". An emergency kill line may be installed on the wellhead. As the maximum anticipated surface pressure of this stack is less than 2000 psi, screwed connections may be used. All components must be of steel construction. The Class II-B blowout preventer stack is shown to the left in Figure 11J.3.