

Standard Oil
Production Company
5151 San Felipe
P.O. Box 4587
Houston, Texas 77210
713 552-8500

May 4, 1988

STANDARD OIL
PRODUCTION

State of New Mexico
Department of Energy
Oil Conservation Commission
Attention: Ms. Evelyn Downs
1000 West Broadway
P. O. Box 1980
Hobbs, New Mexico 88240

RE: PACKER LEAKAGE TEST, ELLIOTT B-12-2 #3
E-12-T22S-R37E LEA COUNTY, NEW MEXICO

Dear Ms. Downs:

This memo documents and follows upon our verbal request for a 90 day extension to the Southeast New Mexico Packer Leakage test for well Elliott B-12-2 #3.

Attached is a copy of the test information performed by Jarrel Wireline which indicates a leak between the Granite Wash and the Drinkard zones requiring some remedial work before we could pass the test successfully.

Attached for your information is the following: 1) Wellbore schedmatic; 2) Jarrel pressure charts indicating leakage.

A workover AFE is being prepared and will be sent to partners for approval in early May, 1988. We expect to be able to move on the well during June, but request 90 days to help ensure partner approvals and sufficient time to complete the field work.

Thank you for your assistance.


Sincerely,

STANDARD OIL PRODUCTION COMPANY

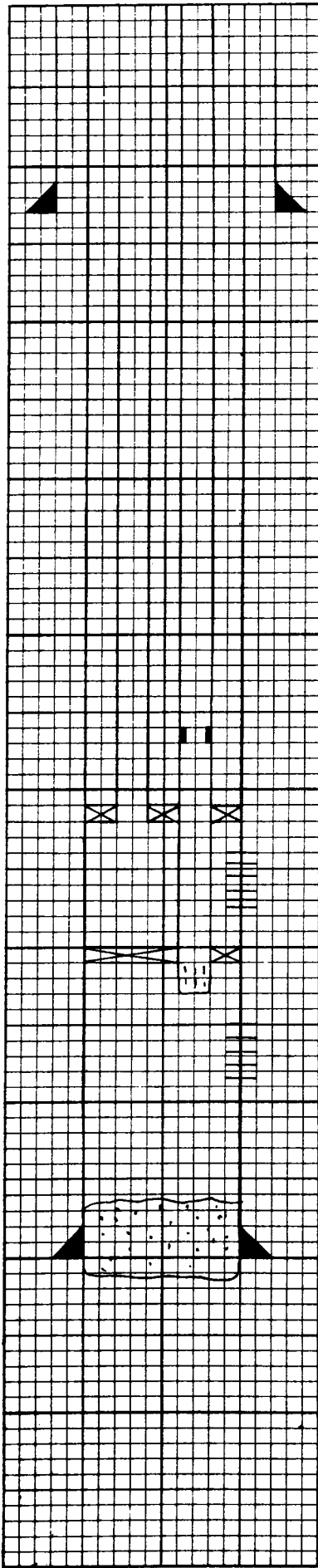

J. D. Starbrough
West Area Production Superintendent

JDS:GRBC/efh
0121A.14

Attachments

cc:  R. B. Frazier
G. R. B. Campbell
D. P. McElvey

Standard Oil Production Company is a
unit of the original Standard Oil Company
founded in Cleveland, Ohio, in 1870



STANDARD OIL PRODUCTION COMPANY

Lease: Elliott B-12-2 Lease No.:29-92
 Well No.: 3 (Dual)
 Location: 2310'FNL & 660'FWL, Sec 12, T22S, R37E
 Field: Drinkard
 County: Lea
 State: New Mexico

API No.: RRC No.:
 WI NRI RRC Dist.:
 Spud'd: 08-25-73 TD'd: 09-18-73 Comp: 09-21-73
 Elevation: KB 3354' GL 3343'
 TD: 7658' PBD: 7304'

Surface Equipment:

Casing Data

Hole	Csg	Gr.	Wt	Depth	#Sx	TOC
11	8 5/8		23#	1282	430	Surf
7 7/8	5 1/2	J55	15.5& 17#	7343'	675	3319'

Tubing Data

Size	Gr.	Wt.	Depth	#Jts	Comments
2 1/6"	J55	3.25	7061'	216	*
2 1/16"	J55	3.25	6192'	191	**

Downhole Equipment (pkrs,tbg anchors,CIBP's,etc)

Type	Size	Depth	Comments
Long String	2 1/16"	5990'	ID= 1.53"
SN			
Baker K Pkr	5 1/2"	6189'	ID= 1.53"
Baker D Pkr	5 1/2"	7054'	
Perf Sub	2 1/16"	7061'	

Perforations	Formation	Stimulation(Date)
6254-6834'	Drinkard	
7123-7260'	Granite Wash	

Comments: *Btm 32 jts are int. plastic coated
 **Btm 94 jts are int. plastic coated
 Csg Repair 11-12-81

Prepared By: L. W. Sutton Date 2-12-86

This form is not to be used for reporting packer leakage tests in Northwest New Mexico

SOUTHEAST NEW MEXICO PACKER LEAKAGE TEST

Operator Standard Oil Production Company			Lease Elliott B-12-2			Well No. 3	
Location of Well	Unit E	Sec 12	Twp 22s	Rge 37e	County Lea		
Name of Reservoir or Pool		Type of Prod (Oil or Gas)	Method of Prod Flow, Art. Lift	Prod. Medium (Tbg or Csg)	Choke Size		
Upper Compl	Drinkard		Oil	Flow	Tbg.	8/64"	
Lower Compl	Granit Wash		Oil	Flow	Tbg	4/64"	

FLOW TEST NO. 1

Both zones shut-in at (hour, date): 8:00 AM (4/11/88)

Well opened at (hour, date): 8:00 AM (4/12/88)

Indicate by (X) the zone producing.....	<u>X</u>	Upper Completion	<u> </u>	Lower Completion	<u> </u>
Pressure at beginning of test.....	<u>560</u>		<u> </u>		<u>200</u>
Stabilized? (Yes or No).....	<u>Yes</u>		<u> </u>		<u>No</u>
Maximum pressure during test.....	<u>560</u>		<u> </u>		<u>480</u>
Minimum pressure during test.....	<u>60</u>		<u> </u>		<u>200</u>
Pressure at conclusion of test.....	<u>60</u>		<u> </u>		<u>480</u>
Pressure change during test (Maximum minus Minimum).....	<u>500</u>		<u> </u>		<u>280</u>
Was pressure change an increase or a decrease?.....	<u>Decrease</u>		<u> </u>		<u>Increase</u>

Well closed at (hour, date): 8:00 AM (4/13/88) Total Time On Production 24.0 hours

Oil Production During Test: 3.0 bbls; Grav. 39 ; Gas Production During Test 69.0 MCF; GOR 23000

Remarks _____

FLOW TEST NO. 2

Well opened at (hour, date): 8:00 AM (4/14/88)

Indicate by (X) the zone producing.....	<u> </u>	Upper Completion	<u> </u>	Lower Completion	<u>X</u>
Pressure at beginning of test.....	<u>560</u>		<u> </u>		<u>580</u>
Stabilized? (Yes or No).....	<u>Yes</u>		<u> </u>		<u>Yes</u>
Maximum pressure during test.....	<u>560</u>		<u> </u>		<u>580</u>
Minimum pressure during test.....	<u>460</u>		<u> </u>		<u>60</u>
Pressure at conclusion of test.....	<u>480</u>		<u> </u>		<u>190</u>
Pressure change during test (Maximum minus Minimum).....	<u>100</u>		<u> </u>		<u>520</u>
Was pressure change an increase or a decrease?.....	<u>Decrease</u>		<u> </u>		<u>Decrease</u>

Well closed at (hour, date): 8:00 AM (4/15/88) Total time on Production 24.0 hours

Oil Production During Test: 2.0 bbls; Grav. 40 ; Gas Production During Test 48.0 MCF; GOR 24000

REMARKS: _____

I hereby certify that the information herein contained is true and complete to the best of my knowledge.

Approved: 19
Oil Conservation Division

Operator Standard Oil Production Company
By D. Dubson
Jarrel Services, Inc.
Title Agent
Date April 25, 1988

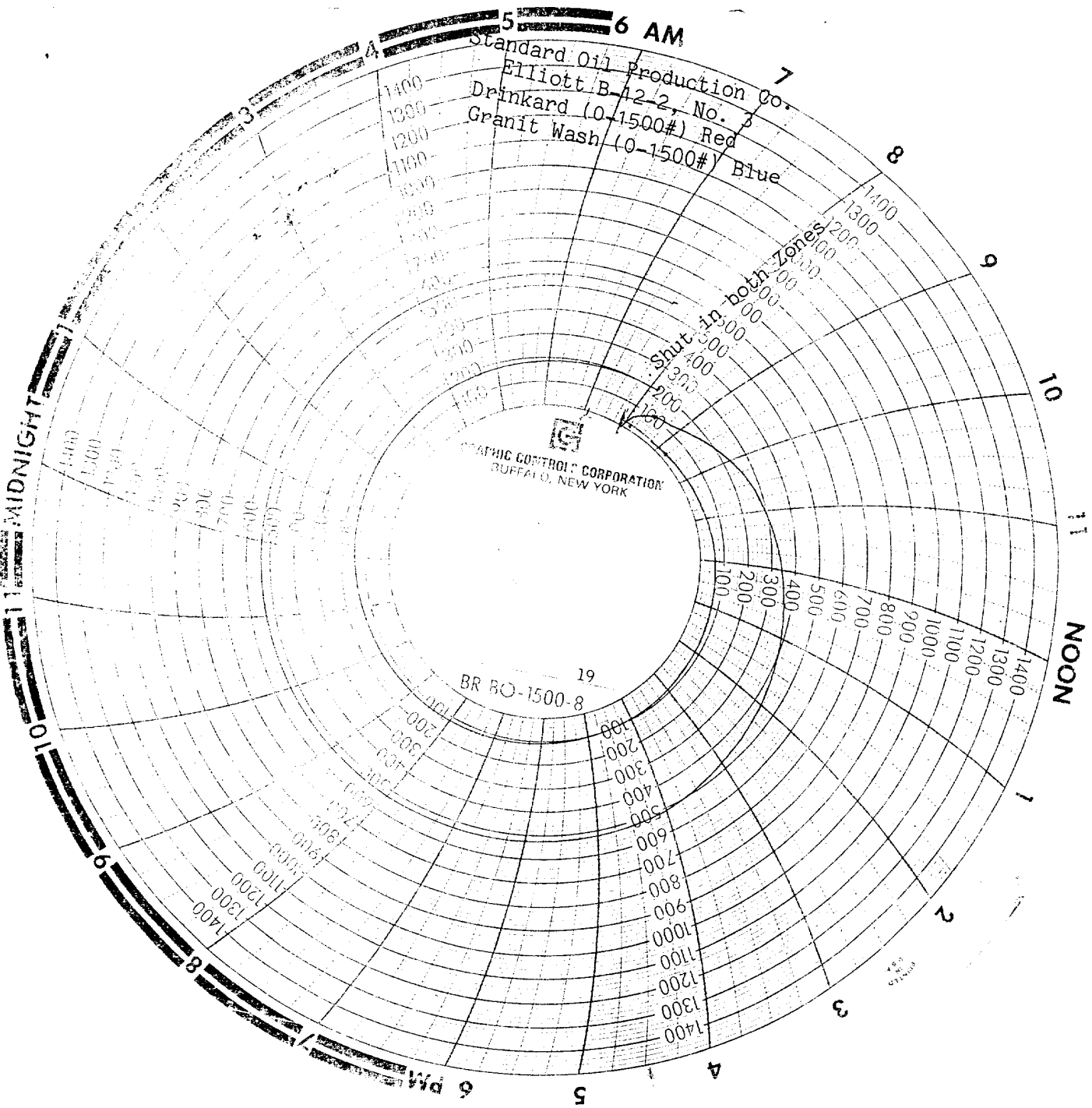
By _____

Title _____

RECEIVED

MAY 9 1938

OLD
HOBBE OFFICE



Standard Oil Production Co.
Elliott B-12-2, No. 3
Drinkard (0-1500#) Red
Granit Wash (0-1500#) Blue

Shut in both zones
1000
800
600
400
200
100

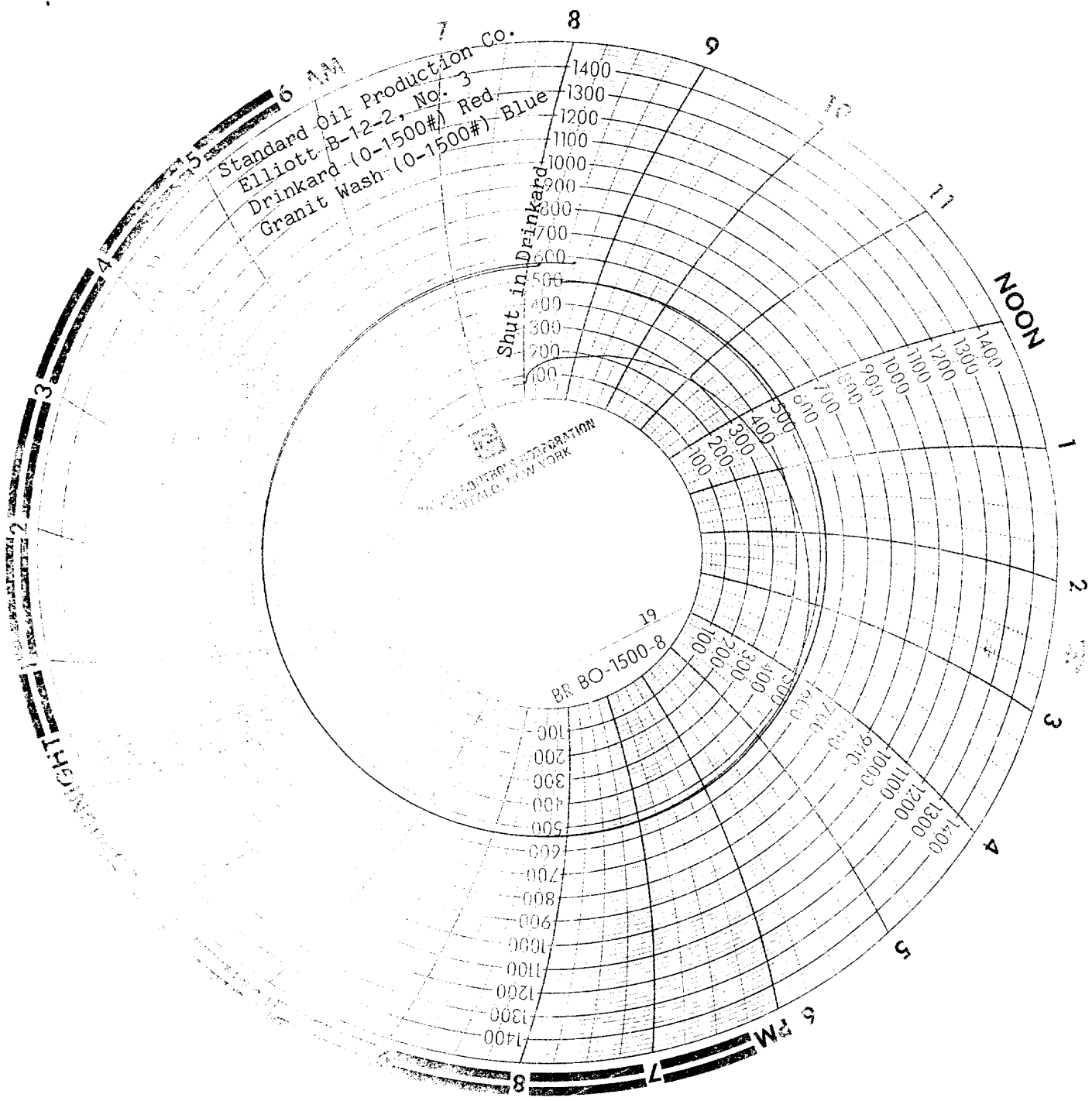
BR RO-1500-8

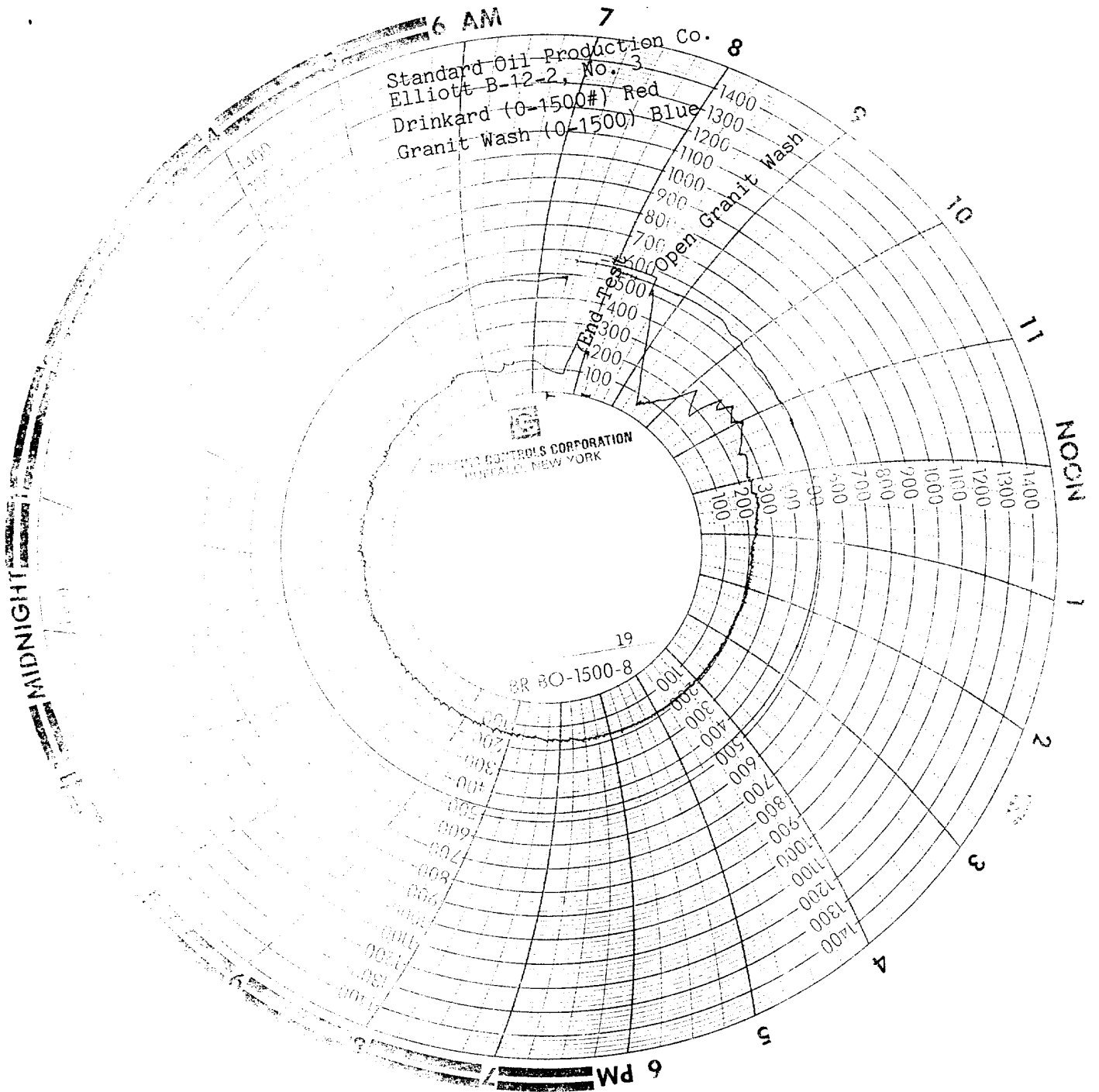
PRINTED IN U.S.A.

RECEIVED

MAY 9 1988

JCD
HOBBS OFFICE





RECEIVED

MAY 9 1988

COB
HOBB'S OFFICE