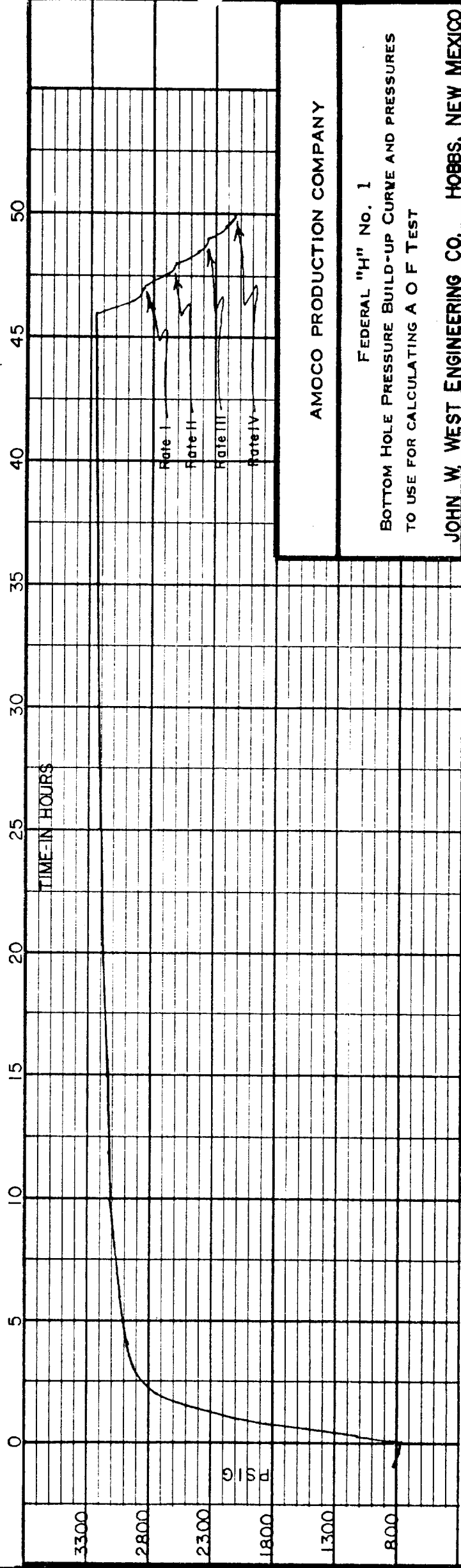


TEST DATE: MAY 29 TO 31, 1979
TEST DEPTH: 14,775 FEET

ELEMENT No.: 18478
RANGE: 0-12,700 PSI
CLOCK No.: 21389
RANGE: 0-72 HOUR

NOTE: SEE TABULATION OF PRESSURE AND TIME ON ATTACHED SHEET.



AMOCO PRODUCTION COMPANY

FEDERAL "H" No. 1

BOTTOM HOLE PRESSURE BUILD-UP CURVE AND PRESSURES
TO USE FOR CALCULATING A O F TEST

JOHN W. WEST ENGINEERING CO. HOBBS, NEW MEXICO

Date: 6-5-79 Drawn by: MCT Scale: AS SHOWN

RECEIVED

JUN 7 1979

**OIL CONSERVATION COMM.
HOBBS, N. M.**