

District I
1625 N. French Dr., Hobbs, NM 88240
District II
811 South First, Artesia, NM 88210
District III
1000 Rio Brazos Road, Aztec, NM 87410
District IV
2040 South Pacheco, Santa Fe, NM 87505

State of New Mexico
Energy Minerals and Natural Resources

Form C-101
Revised March 17, 1999

Oil Conservation Division
2040 South Pacheco
Santa Fe, NM 87505

Submit to appropriate District Office
State Lease - 6 Copies
Fee Lease - 5 Copies

AMENDED REPORT

APPLICATION FOR PERMIT TO DRILL, RE-ENTER, DEEPEN, PLUGBACK, OR ADD A ZONE

¹ Operator Name and Address Pure Resources, L. P. 500 W. Illinois Midland, Texas 79701		² OGRID Number 150628
⁴ Property Code 150628	⁵ Property Name Geronimo "28" State Com	³ API Number 30-0-360-20 ⁶ Well No. 1

⁷ Surface Location

UL or lot no.	Section	Township	Range	Lot Idn	Feet from the	North/South line	Feet from the	East/West line	County
K	28	22 S	35 E		1950	SOUTH	1600	WEST	LEA

⁸ Proposed Bottom Hole Location If Different From Surface

UL or lot no.	Section	Township	Range	Lot Idn	Feet from the	North/South line	Feet from the	East/West line	County

⁹ Proposed Pool 1 Rock Lake; Morrow, North (Gas)	¹⁰ Proposed Pool 2 Wildcat
--	--

¹¹ Work Type Code N	¹² Well Type Code O & G	¹³ Cable/Rotary R	¹⁴ Lease Type Code S	¹⁵ Ground Level Elevation 3,555'
¹⁶ Multiple No	¹⁷ Proposed Depth 14,500'	¹⁸ Formation Morrow	¹⁹ Contractor TMBR/Sharp	²⁰ Spud Date 10/28/2002

²¹ Proposed Casing and Cement Program

Hole Size	Casing Size	Casing weight/foot	Setting Depth	Sacks of Cement	Estimated TOC
26"	20"	94#	900'	1,800	Surface
12-1/4"	9-5/8"	40#	5,800'	2,500	Surface
8-3/4"	7"	26#	11,450'	560	4,800'
6-1/8"	4-1/2"	13.5#	14,500'	370	11,200'

²² Describe the proposed program. If this application is to DEEPEN or PLUG BACK, give the data on the present productive zone and proposed new productive zone.

Describe the blowout prevention program, if any. Use additional sheets if necessary.

Pure Resources, L.P. plans to drill the Geronimo "28" State Comm #1 well and complete in the Morrow formation (or as a Wildcat).

The Surface Casing BOP: A double gate BOP with 21-1/4" 3,000 psi pipe rams, choke manifold with adjustable and positive chokes, an accumulator will hydraulically operate the BOP. Rotating head will be utilized during the drilling of the 12-1/4" hole.

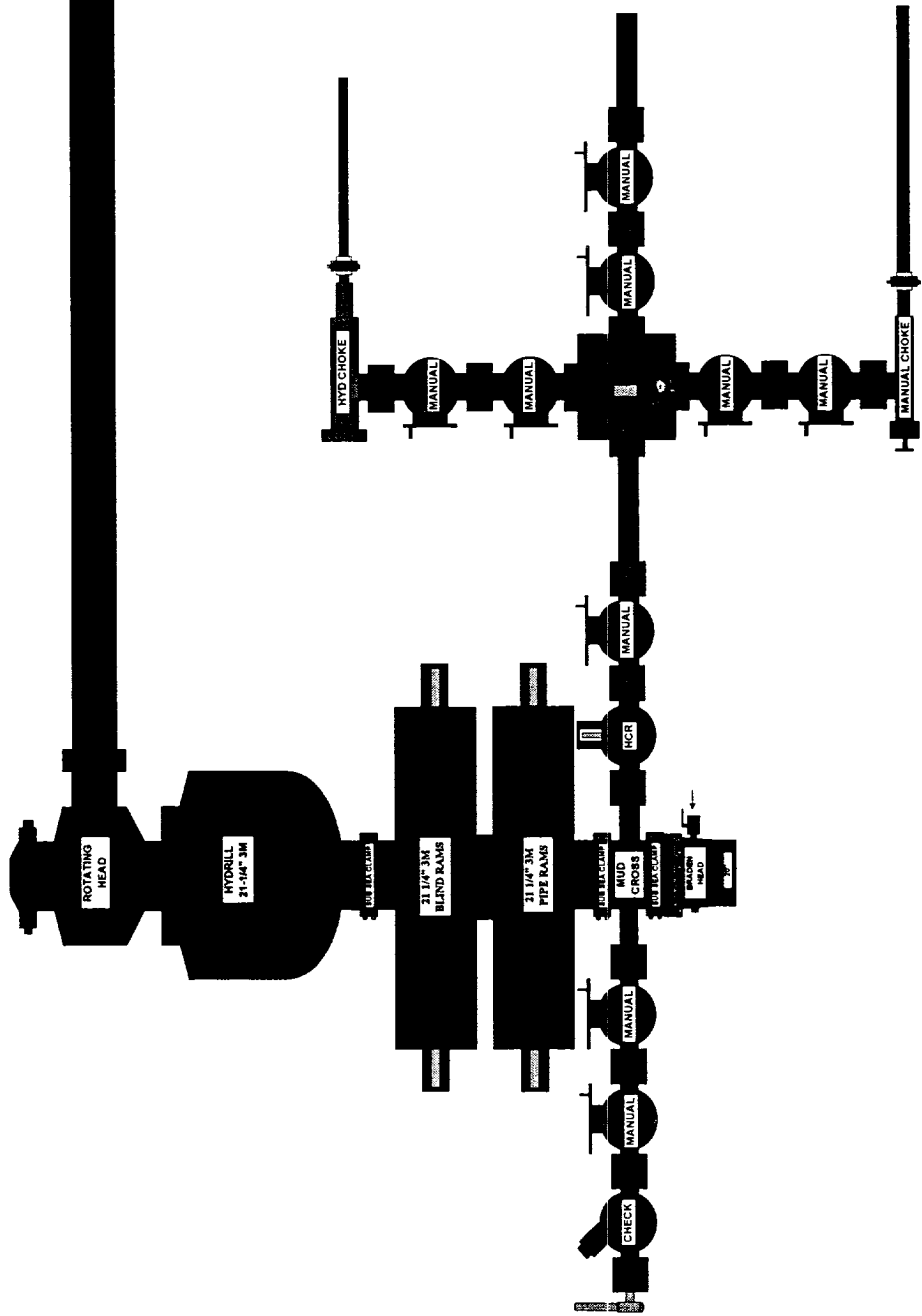
The Intermediate & Production Casing BOP: consisting of three 11", 10,000 psi blind rams, choke manifold with adjustable and positive chokes, an accumulator will hydraulically operate the BOP. Rotating head will be utilized during the drilling of the 8-3/4" and 6-1/8" intermediate and production casing holes. (See attached BOP Schematics)

²³ I hereby certify that the information given above is true and complete to the best of my knowledge and belief. Signature: <i>Alan W. Bohling</i>	OIL CONSERVATION DIVISION ORIGINAL SIGNED BY Approved by: PAUL F. KAUTZ
Printed Name: Alan W. Bohling	Title: PETROLEUM ENGINEER
Title: Regulatory Analyst	Approval Date: 10/14/2002 Expiration Date:
Date: 10/11/2002 Phone: (915)498-8662	Conditions of Approval: Attached <input type="checkbox"/>

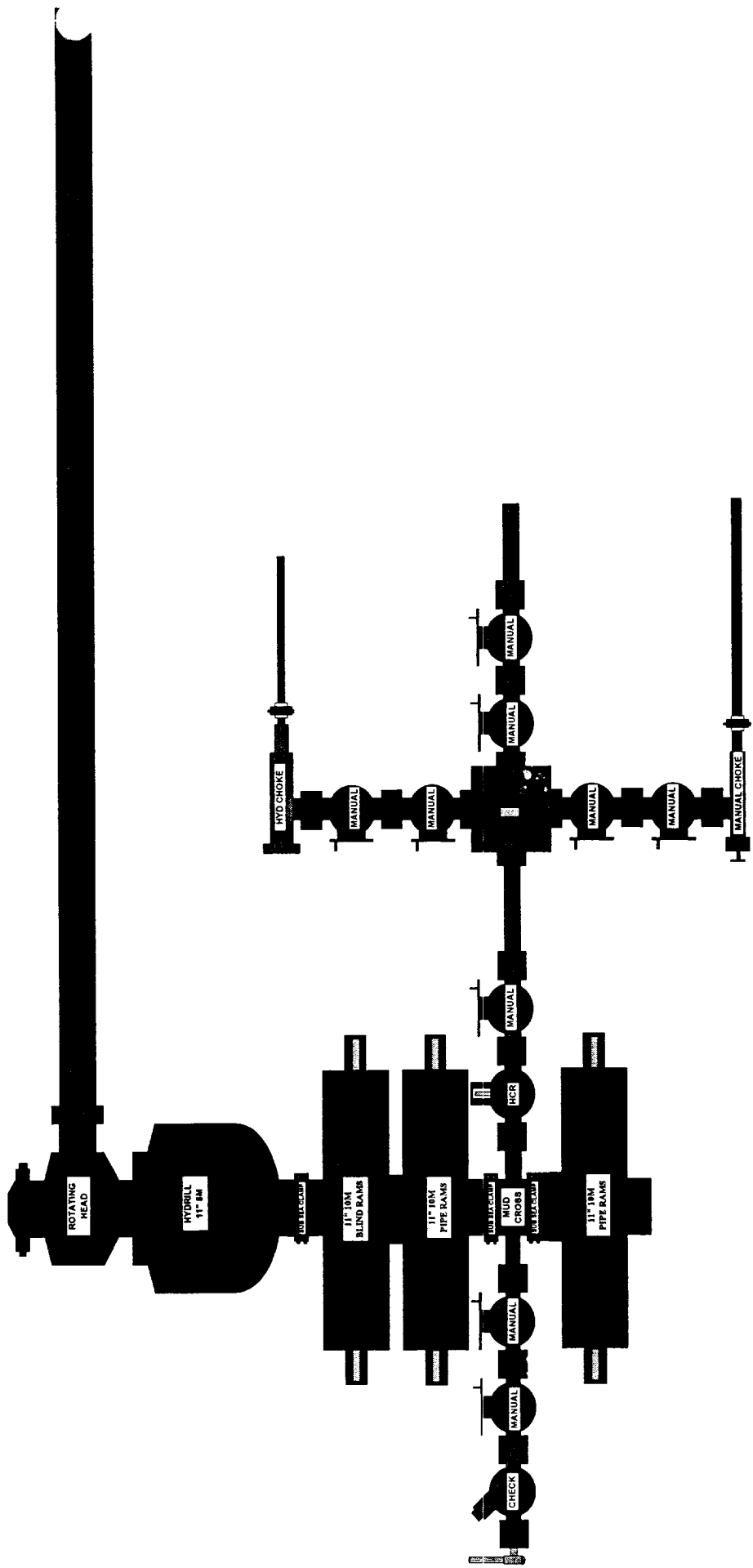
Permit Expires 1 Year From Spud Date Unless Ending Underway

MP

**Geronimo "28" State Comm # 1
Surface Casing BOP Schematic**



**Geronimo "28" State Comm #1
Intermediate Casing &
Production Casing BOP
Schematic**



DISTRICT I
1625 N. French Dr., Hobbs, NM 88240

State of New Mexico
Energy, Minerals & Natural Resources Department

Form C-102
Revised August 15, 2000
Submit to Appropriate District Office
State Lease - 4 Copies
Fee Lease - 3 Copies

DISTRICT II
P.O. Drawer DD, Artesia, NM 88211-0719

OIL CONSERVATION DIVISION
2040 South Pacheco
Santa Fe, NM 87505

DISTRICT III
1000 Rio Brazos Rd., Artec, NM 87410

DISTRICT IV
2040 South Pacheco, Santa Fe, NM 87505

AMENDED REPORT

WELL LOCATION AND ACREAGE DEDICATION PLAT

API Number 30-020-7500	Pool Code 83955	Pool Name Rock Lake; Morrow, North (Gas)
Property Code 30099	Property Name GERONIMO "28" STATE COM	Well Number 1
OGRID No. 150628	Operator Name PURE RESOURCES, L.P.	Elevation 3555

Surface Location

UL or lot No.	Section	Township	Range	Lot Idn	Feet from the	North/South line	Feet from the	East/West line	County
K	28	22 S	35 E		1950	SOUTH	1600	WEST	LEA

Bottom Hole Location If Different From Surface

UL or lot No.	Section	Township	Range	Lot Idn	Feet from the	North/South line	Feet from the	East/West line	County

Dedicated Acres 320	Joint or Infill	Consolidation Code	Order No.
------------------------	-----------------	--------------------	-----------

NO ALLOWABLE WILL BE ASSIGNED TO THIS COMPLETION UNTIL ALL INTERESTS HAVE BEEN CONSOLIDATED OR A NON-STANDARD UNIT HAS BEEN APPROVED BY THE DIVISION

Amoco Rock Lake Unit #1

Plane Coordinate
X = 795,778.8
Y = 496,263.3

Yates Petroleum Northern AKQ-St. #1

NOTE:
1) Plane Coordinates shown hereon are Transverse Mercator and Conform to the "New Mexico Coordinate System", New Mexico East Zone. Distances shown hereon are mean horizontal surface values.

OPERATOR CERTIFICATION

I hereby certify the the information contained herein is true and complete to the best of my knowledge and belief.

Alan W. Bohling
Signature

Alan W. Bohling
Printed Name

Regulatory Analyst
Title

10/10/2002
Date

SURVEYOR CERTIFICATION

I hereby certify that the well location shown on this plat was plotted from field notes of actual surveys made by me or under my supervision and that the same is true and correct to the best of my belief.

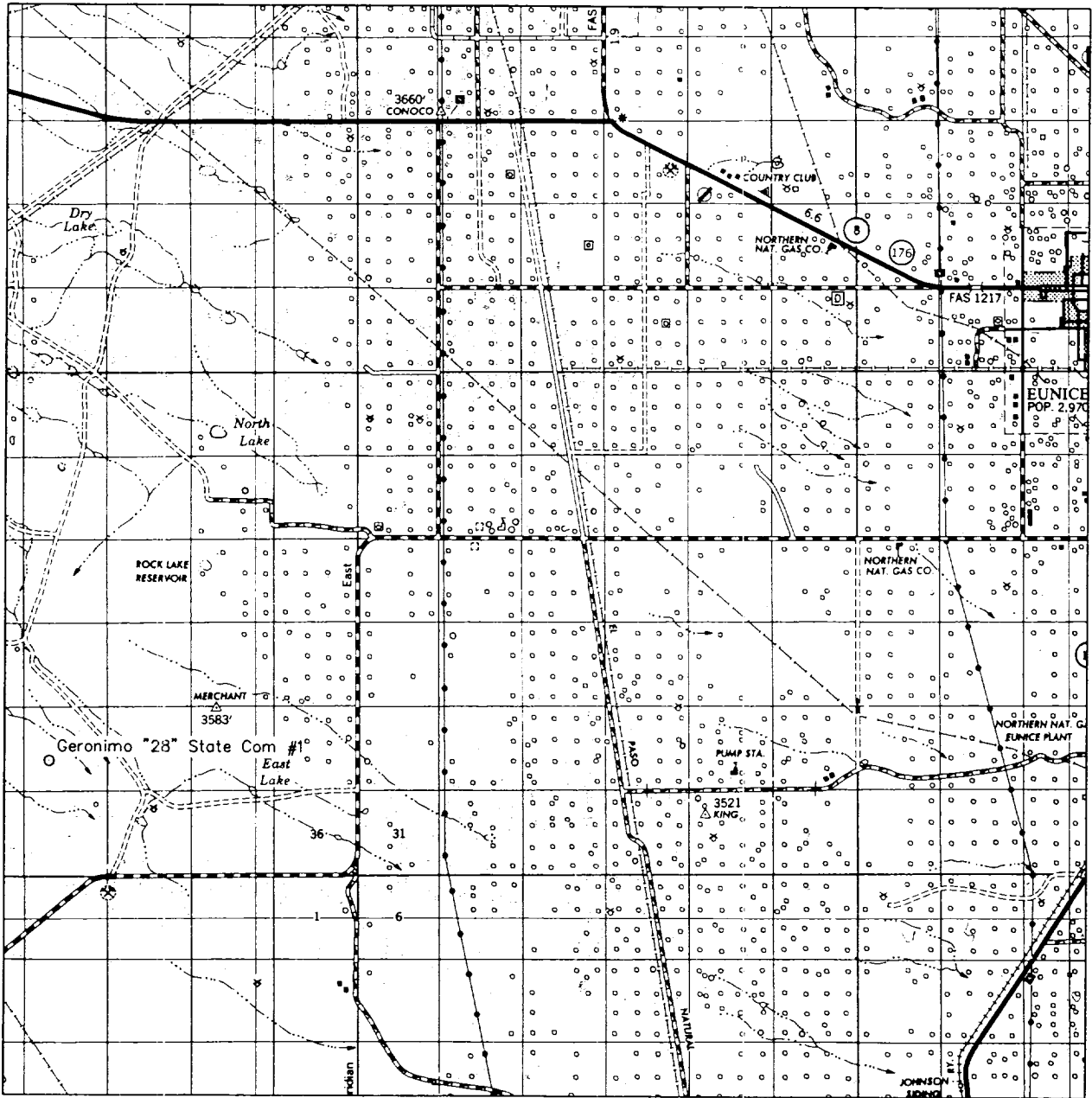
October 8, 2002
Date Surveyed

Signature & Seal of Professional Surveyor LVA

W.O. Num. 2002-0624-S

Certificate No. MACON McDONALD 12185

VICINITY MAP



SCALE: 1" = 2 MILES

SEC. 28 TWP. 22-S RGE. 35-E

SURVEY N.M.P.M.

COUNTY LEA

DESCRIPTION 1950' FSL & 1600' FWL

ELEVATION 3555

OPERATOR PURE RESOURCES, L.P.

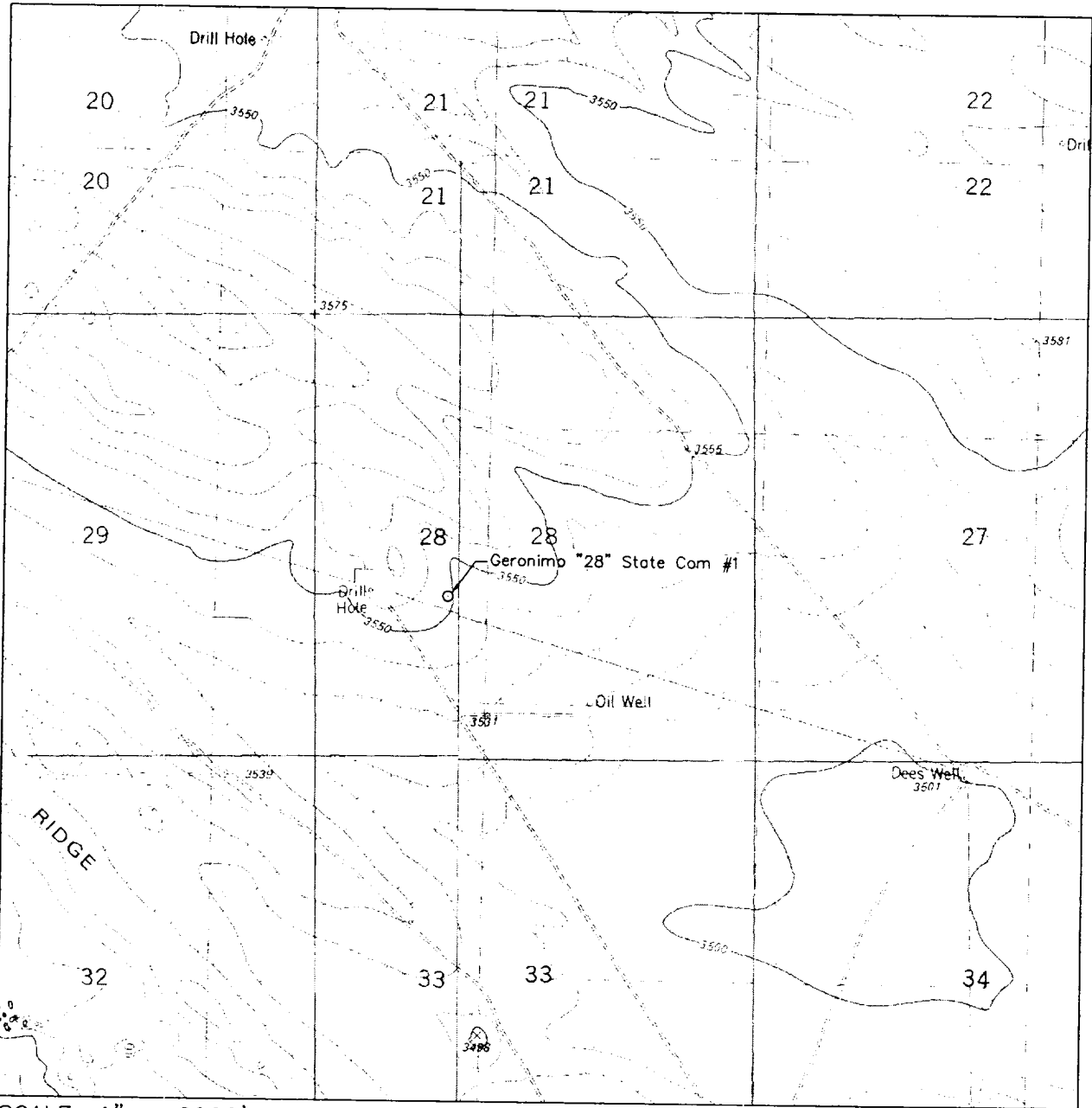
LEASE GERONIMO "28" STATE COM



**WEST
COMPANY**
of Midland, Inc.

110 W. LOUISIANA, STE. 110
MIDLAND TEXAS, 79701
(915) 687-0865 - (915) 687-0868 FAX

LOCATION VERIFICATION MAP



SCALE: 1" = 2000'

CONTOUR INTERVAL:
SAN SIMON SINK - 10'

SEC. 28 TWP. 22-S RGE. 35-E

SURVEY N.M.P.M.

COUNTY LEA

DESCRIPTION 1950' FSL & 1600' FWL

ELEVATION 3555

OPERATOR PURE RESOURCES, L.P.

LEASE GERONIMO "28" STATE COM

U.S.G.S. TOPOGRAPHIC MAP
SAN SIMON SINK, N.M.



**WEST
COMPANY**
of Midland, Inc.

110 W. LOUISIANA, STE. 110
MIDLAND TEXAS, 79701
(915) 687-0865 - (915) 687-0868 FAX