

| | |
|------------------------|--|
| NO. OF COPIES RECEIVED | |
| DISTRIBUTION | |
| SANTA FE | |
| FILE | |
| U.S.G.S. | |
| LAND OFFICE | |
| OPERATOR | |

5A. Indicate Type of Lease
STATE FEDERAL

5. State Oil & Gas Lease No.
B-9312

APPLICATION FOR PERMIT TO DRILL, DEEPEN, OR PLUG BACK

1a. Type of Work
DRILL *Re-entry* DEEPEN PLUG BACK

b. Type of Well
OIL WELL GAS WELL OTHER Water injection well SINGLE ZONE MULTIPLE ZONE

2. Name of Operator
Sirgo-Collier, Inc.

3. Address of Operator
P. O. Box 3531, Midland, Texas 79702

4. Location of Well
UNIT LETTER B LOCATED 996 FEET FROM THE North LINE
AND 2310 FEET FROM THE East LINE OF SEC. 5 TWP. 25-S RGE. 38-E NMPM

7. Unit Agreement Name
West Dollarhide Queen Sand Unit

8. Farm or Lease Name

9. Well No.
52

10. Field and Pool, or Wildcat
Dollarhide Queen

12. County
Lea

19. Proposed Depth
3920'

19A. Formation
Queen

20. Rotary or C.T.
Rotary *Reverse*

21. Elevations (Show whether DF, KT, etc.)
3145' DF

21A. Kind & Status Plug. Bond
Cash Statewide

21B. Drilling Contractor

22. Approx. Date Work will start
January 21, 1988

PROPOSED CASING AND CEMENT PROGRAM

| SIZE OF HOLE | SIZE OF CASING | WEIGHT PER FOOT | SETTING DEPTH | SACKS OF CEMENT | EST. TOP |
|--------------|----------------|-----------------|---------------|-----------------|----------|
| 11" | * 8-5/8" | 24# | 1210' | 400 | Surface |
| 8" | * 7" | 20# | 3655' | 200 | 2646' |
| 6-1/8" | 4-1/2" | 10.5# | TD | 500 | Surface |

Sirgo-Collier, Inc. plans to re-enter and deepen to 3920' this P&A (1-4-73) Queen water injection well. New 4-1/2" casing will be run to TD and cemented to surface, the Queen zone will be selectively perforated and acidized, and a Baker AD-1 packer will be run on 2-3/8" tubing, set approximately 100' above the top perf.

* Casing already present in the wellbore.

ABOVE SPACE DESCRIBE PROPOSED PROGRAM; IF PROPOSAL IS TO DEEPEN OR PLUG BACK, GIVE DATA ON PRESENT PRODUCTIVE ZONE AND PROPOSED NEW PRODUCTIVE ZONE. GIVE BLOWOUT PREVENTER PROGRAM, IF ANY.

I hereby certify that the information above is true and complete to the best of my knowledge and belief.

Signed Amy L. Whitley Title Agent Date December 14, 1987

(This space for State Use)
ORIGINAL SIGNED BY JERRY DEXTON
DISTRICT I SUPERVISOR

APPROVED BY _____ TITLE _____ DATE DEC 23 1987

CONDITIONS OF APPROVAL, IF ANY:

SUBJECT TO APPROVAL OF AUTHORITY TO INJECT

Permit Expires 6 Months From Approval
Date Unless Drilling Underway.

RECEIVED

DEC 17 1987

OCD
HOBBS OFFICE

NEW MEXICO OIL CONSERVATION COMMISSION
 WELL LOCATION AND ACREAGE DEDICATION PLAT

Form C-102
 Supersedes C-128
 Effective 1-1-65

All distances must be from the outer boundaries of the Section.

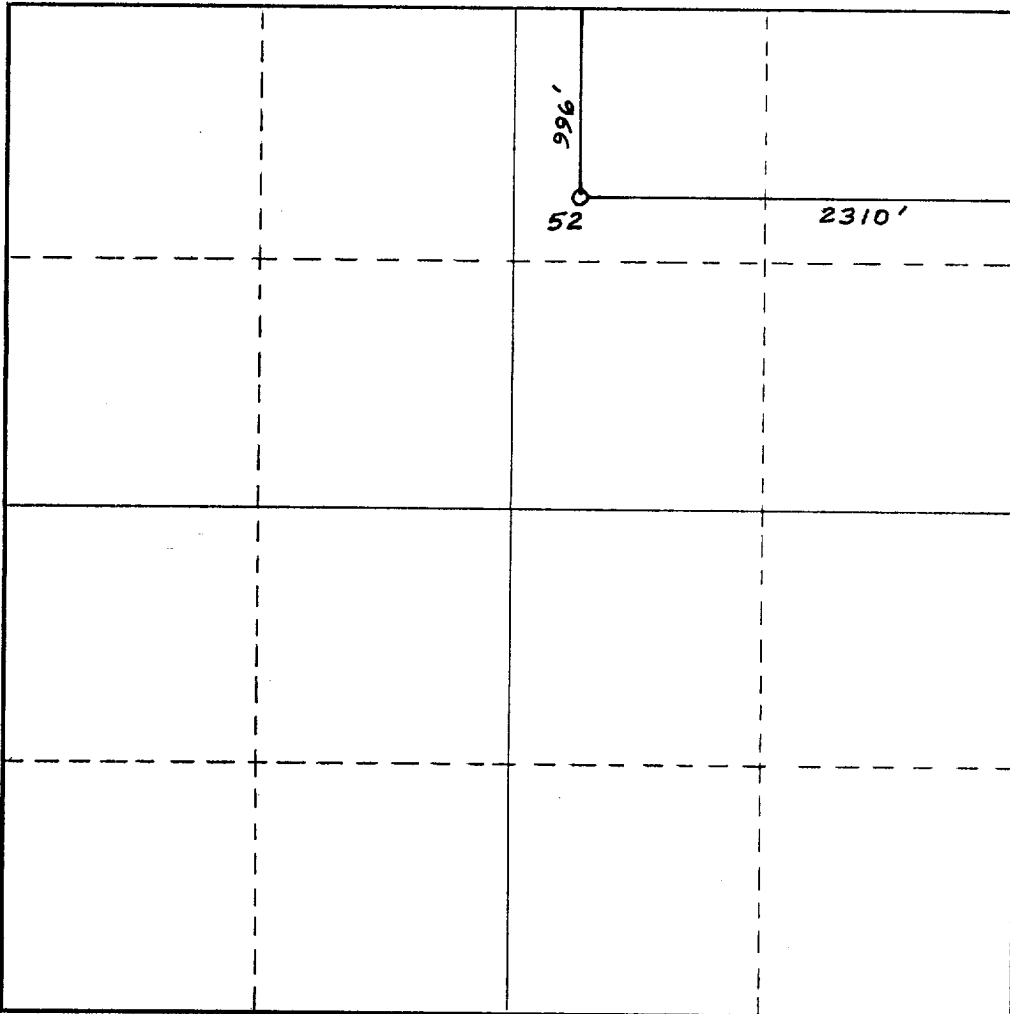
| | | | | | |
|---|-------------------------------------|---|---------------------------------|----------------------|---------------------------------------|
| Operator Sirgo-Collier, Inc. | | Lease West Dollarhide Queen Sand Unit | | | Well No. 52 |
| Unit Letter B | Section 5 | Township 25-S | Range 38-E | County Lea | |
| Actual Footage Location of Well: 996 feet from the North line and 2310 feet from the East line | | | | | |
| Ground Level Elev. 3135' | Producing Formation Queen | | Pool Dollarhide Queen | | Dedicated Acreage: 40 Acres |

1. Outline the acreage dedicated to the subject well by colored pencil or hachure marks on the plat below.
2. If more than one lease is dedicated to the well, outline each and identify the ownership thereof (both as to working interest and royalty).
3. If more than one lease of different ownership is dedicated to the well, have the interests of all owners been consolidated by communitization, unitization, force-pooling, etc?

Yes No If answer is "yes," type of consolidation Unitization, R-2356

If answer is "no," list the owners and tract descriptions which have actually been consolidated. (Use reverse side of this form if necessary.) _____

No allowable will be assigned to the well until all interests have been consolidated (by communitization, unitization, forced-pooling, or otherwise) or until a non-standard unit, eliminating such interests, has been approved by the Commission.



CERTIFICATION

I hereby certify that the information contained herein is true and complete to the best of my knowledge and belief.

Amy L. Whitley
 Name
 Amy L. Whitley
 Position
 Agent
 Company
 Sirgo-Collier, Inc.
 Date
 December 18, 1987

I hereby certify that the well location shown on this plat was plotted from field notes of actual surveys made by me or under my supervision, and that the same is true and correct to the best of my knowledge and belief.

Date Surveyed
 Registered Professional Engineer and/or Land Surveyor
 Certificate No.

