

NEW MEXICO OIL CONSERVATION COMMISSION
WELL LOCATION AND ACREAGE DEDICATION PLAT

Form No. 1
Supersedes Form
Effective 1-1-73

All distances must be from the outer boundaries of the Section

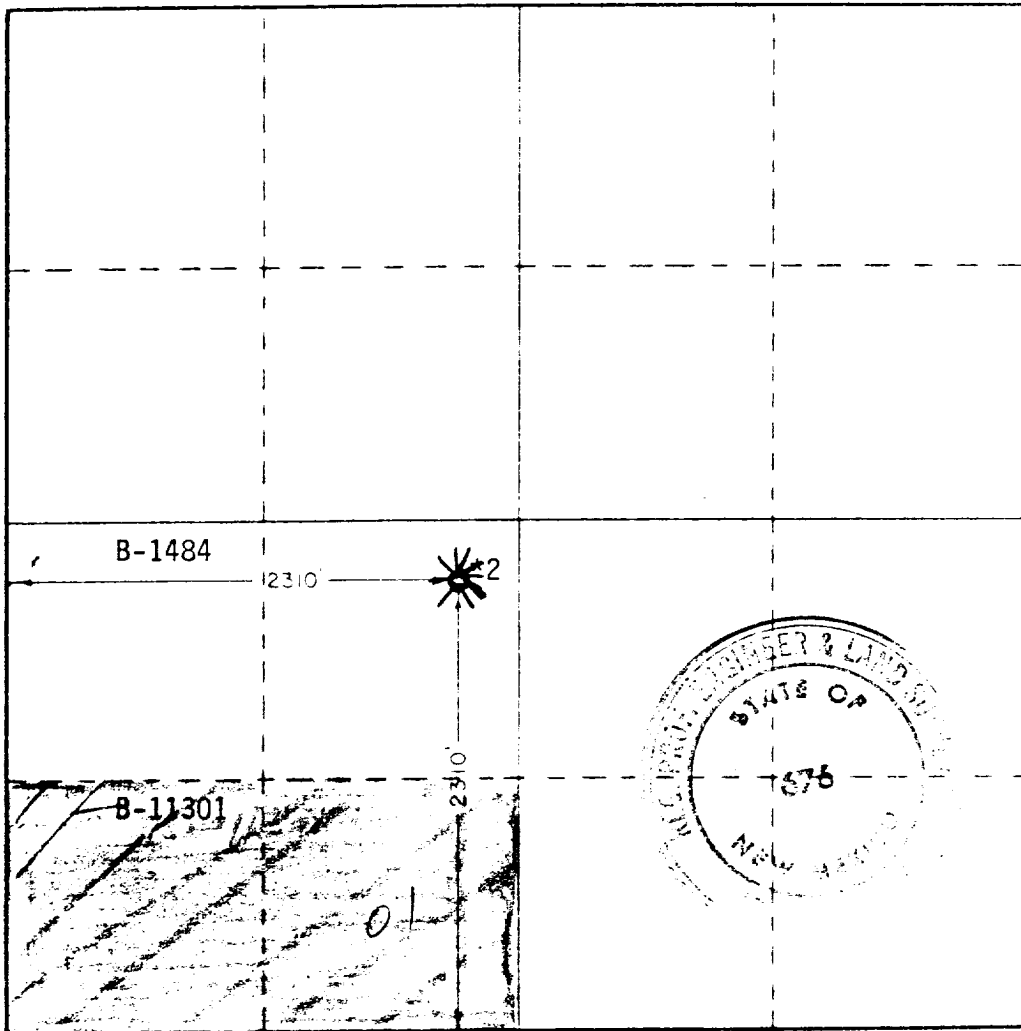
Operator Doyle Hartman		Lease Cooper State			Acres 2
Section Letter K	Section 2	Township 24 South	Range 36 East	County Lea	
Allowable Percentage Location East 2310		feet from the South	line and	2310	feet from the West
Ground Level Elev. 3366.8	Producing Formation Yates	Pool Jalmat (Gas)	Estimated Acreage 160*		

1. Outline the acreage dedicated to the subject well by colored pencil or hachure marks on the plat below
2. If more than one lease is dedicated to the well, outline each and identify the ownership thereof (both as to working interest and royalty) See Reverse Side
3. If more than one lease of different ownership is dedicated to the well, have the interests of all owners been consolidated by communitization, unitization, force-pooling, etc?

Yes No If answer is "yes," type of consolidation Communitization Agreement

If answer is "no" list the owners and tract descriptions which have actually been consolidated (Use reverse side of this form if necessary.) _____

No allowable will be assigned to the well until all interests have been consolidated (by communitization, unitization, forced-pooling, or otherwise) or until a non-standard unit, eliminating such interests, has been approved by the Commission. * Request has been filed for Cooper State No. 2 to share an allowable with Cooper State



CERTIFICATION No. 1

I hereby certify that the information contained herein is true and complete to the best of my knowledge and belief

Doyle Hartman

Doyle Hartman

Operator - Part Owner

Individual

8-25-78

I hereby certify that the well location shown on this plat was plotted from field notes of actual surveys made by me or under my supervision and that the same is true and correct to the best of my knowledge and belief

March 15, 1978

John W. West

Certificate No. John W. West 675
Ronald J. Eidson 3029

Tracts Forming Non-Standard Proration Unit

S/2 SW/4 Sec. 2
No. Acres - 80
W. I. Ownership - Doyle Hartman
Royalty - State of New Mexico
State Lease No. - B-11301

N/2 SW/4 Sec. 2
No. Acres - 80
W. I. Ownership - Doyle Hartman
Royalty - State of New Mexico
State Lease No. - B-1484

RECEIVED

APR 01 1978

REGISTRATION COMM.
SANTA FE, N.M.

NEW MEXICO OIL CONSERVATION COMMISSION
WELL LOCATION AND ACREAGE DEDICATION PLAT

Form O-112
Supersedes O-128
Effective 1-1-65

All distances must be from the outer boundaries of the Section

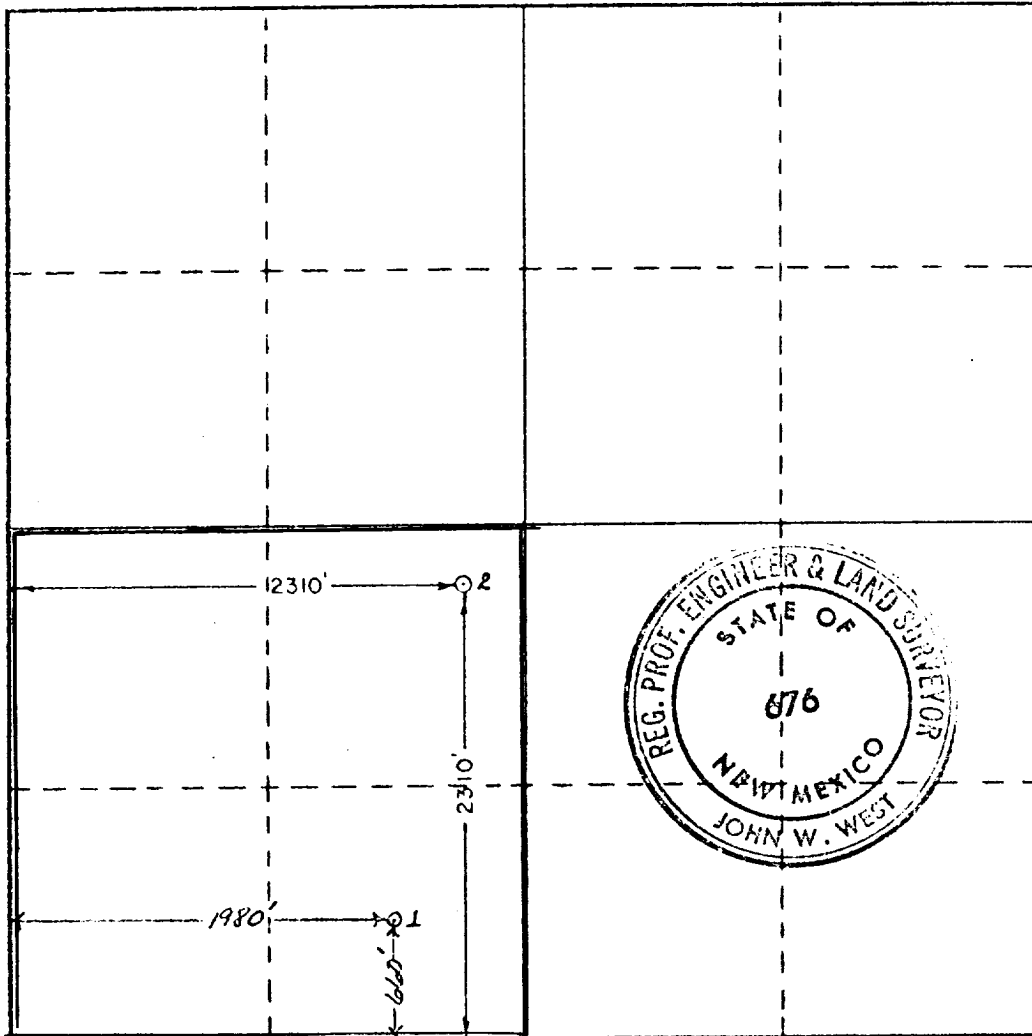
Operator Doyle Hartman			Lease Cooper State			Well No. 2		
Post Letter K	Section 2	Township 24 South	Range 36 East	County Lea				
Actual Footage Location of Well:								
2310 feet from the South line and			2310 feet from the West line					
Ground Level Elev. 3366.8	Producing Formation Yates		Pool Jalpat (Gas)		Dedicated Acreage 160 *			

1. Outline the acreage dedicated to the subject well by colored pencil or hachure marks on the plat below.
2. If more than one lease is dedicated to the well, outline each and identify the ownership thereof (both as to working interest and royalty). See Reverse Side
3. If more than one lease of different ownership is dedicated to the well, have the interests of all owners been consolidated by communitization, unitization, force-pooling, etc?

Yes No If answer is "yes," type of consolidation Communitization Agreement

If answer is "no," list the owners and tract descriptions which have actually been consolidated. (Use reverse side of this form if necessary.) _____

No allowable will be assigned to the well until all interests have been consolidated (by communitization, unitization, forced-pooling, or otherwise) or until a non-standard unit, eliminating such interests, has been approved by the Commission. * Request has been filed for Cooper State No. 2 to share an allowable with Cooper State No. 1



CERTIFICATION

I hereby certify that the information contained herein is true and complete to the best of my knowledge and belief

Doyle Hartman
Name

Doyle Hartman
Position
Operator - Part Owner

Company
Individual

Date
9-27-78

I hereby certify that the well location shown on this plat was plotted from field notes of actual surveys made by me or under my supervision, and that the same is true and correct to the best of my knowledge and belief.

March 15, 1978

Date Surveyed

Registered Professional Engineer and/or Land Surveyor

John W. West

Certificate No. John W. West 676
Ronald J. Eidson 3239

