

SOUTHEAST NEW MEXICO PACKER LEAKAGE TEST

| | | | | | | | | |
|--|------------------------------|---------------------------|-------------------------------|---------------------------|----------------------|----------------------|--|--|
| Operator Cactus Drilling Company | | | Lease Federal 35 | | | Well No. 1 | | |
| Location of Well | Unit A | Sec 35 | Twp 25 N | Rge 37 E | County Lea | | | |
| Name of Reservoir or Pool | | Type of Prod (Oil or Gas) | Method of Prod Flow, Art Lift | Prod. Medium (Tbg or Csg) | Choke Size | | | |
| Upper Compl | Justis Blinbry | | oil | pump | 2" tbg | | | |
| Lower Compl | Justis Tubbs Drinkard | | oil | pump | 2" tbg | | | |

FLOW TEST NO. 1

Both zones shut-in at (hour, date): **4:00 P M, May 14, 1964**

| Well opened at (hour, date): | Upper Completion | Lower Completion |
|---|---------------------------|------------------------|
| 4:00 P M May 15, 1964 | | |
| Indicate by (X) the zone producing..... | X | |
| Pressure at beginning of test..... | 250 | 50 |
| Stabilized? (Yes or No)..... | yes | yes |
| Maximum pressure during test..... | 260 | 50 |
| Minimum pressure during test..... | 260 | 50 |
| Pressure at conclusion of test..... | 260 | 50 |
| Pressure change during test (Maximum minus Minimum)..... | 10 | 0 |
| Was pressure change an increase or a decrease?..... | increase | N.C. |
| Well closed at (hour, date): 4:00 P M May 16, 1964 | Total Time On Production | 24 hr |
| Oil Production | Gas Production | |
| During Test: 19 bbls; Grav. 36.4 | ; During Test 34.4 | MCF; GOR 1810:1 |
| Remarks _____ | | |

FLOW TEST NO. 2

| Well opened at (hour, date): | Upper Completion | Lower Completion |
|--|---------------------------|------------------------|
| 4:00 P M May 17, 1964 | | |
| Indicate by (X) the zone producing..... | | X |
| Pressure at beginning of test..... | 260 | 50 |
| Stabilized? (Yes or No)..... | yes | yes |
| Maximum pressure during test..... | 260 | 50 |
| Minimum pressure during test..... | 260 | 20 |
| Pressure at conclusion of test..... | 260 | 20 |
| Pressure change during test (Maximum minus Minimum)..... | 0 | 30 |
| Was pressure change an increase or a decrease?..... | N C | Decrease |
| Well closed at (hour, date) 4:00 P M May 18, 1964 | Total time on Production | 24 hr |
| Oil Production | Gas Production | |
| During Test: 14 bbls; Grav. 36.1 | ; During Test 22.9 | MCF; GOR 1640:1 |
| Remarks _____ | | |

I hereby certify that the information herein contained is true and complete to the best of my knowledge.

Approved _____ 19 _____
New Mexico Oil Conservation Commission

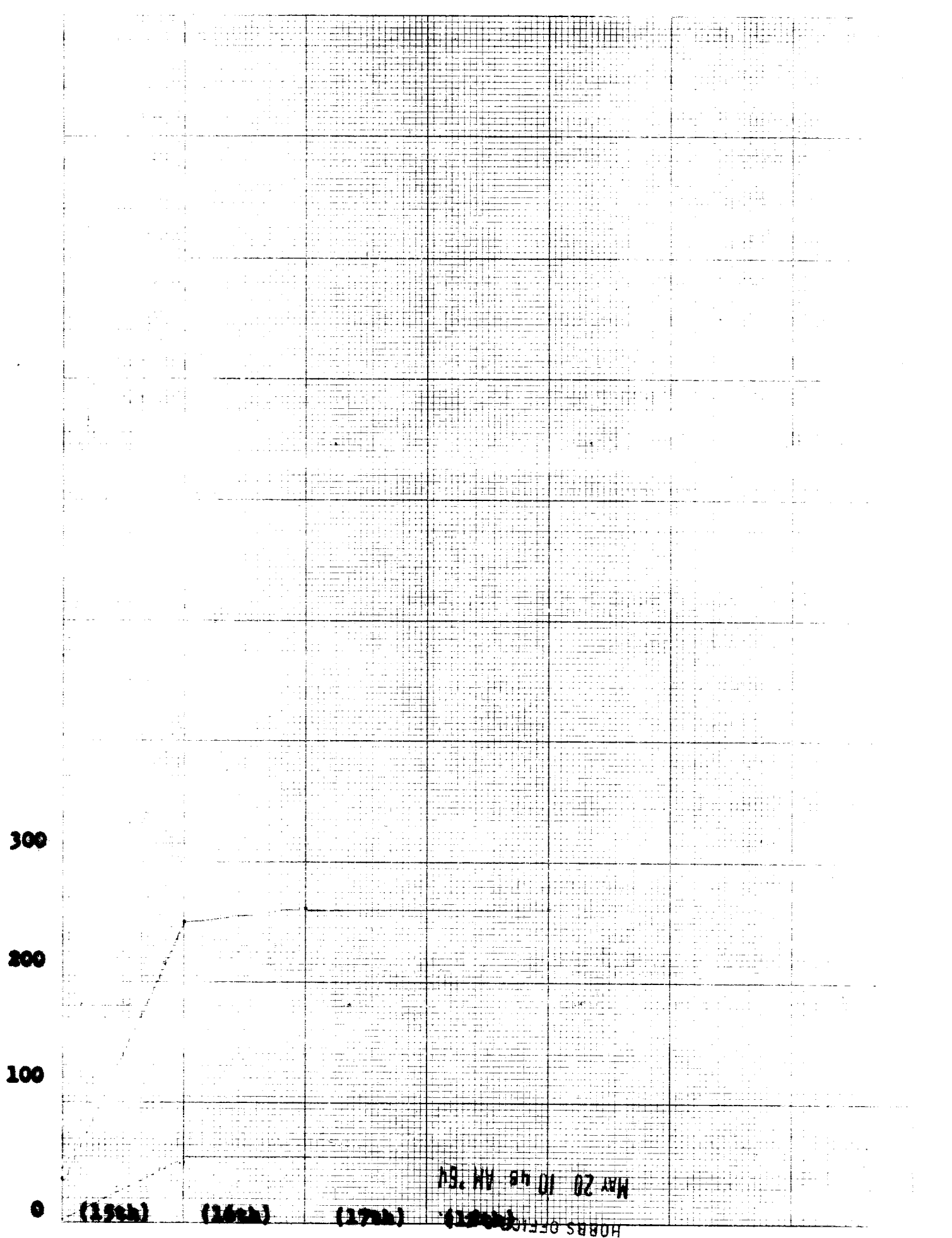
Operator **Cactus Drilling Company**
By Geo W. Baker
Title **Vice President**
Date **May 19, 1964**

By _____
Title _____

PACKER LEAKAGE TEST INSTRUCTIONS

1. A packer leakage test shall be commenced on each multiply completed well within 30 days of the completion of the well, and annually thereafter until the well is authorized for multiple completion.
2. The Commission shall authorize multiple completions within seven days of the completion of a fracture treatment, and whenever remedial work is performed on a well during which the packer or the tubing have been disturbed. Tests shall also be taken at any time that communication is requested, when requested by the Commission.
3. At least 24 hours before the commencement of any packer leakage test, the operator shall file with the Commission in writing of the exact time the test is to be conducted. The operators shall also be so notified.
4. The test shall commence when both zones of the dual completion are at pressure stabilization. Both zones shall remain shut-in until the pressure in each has stabilized and for a minimum of 12 hours thereafter, provided however, that they need not remain shut-in for more than 24 hours.
5. Following completion of the dual completion test, the operator shall produce at the normal rate of production while the other zone remains shut-in. Such test shall continue until the flowing wellhead pressure has become stabilized for a minimum of 12 hours thereafter, provided however, that the test shall not continue for more than 24 hours.

6. Flow Test No. 2 shall be conducted during Flow Test No. 1. The test shall be conducted as for flow Test No. 1, except that the previously shut-in zone is produced main shut-in while the previously shut-in zone is produced.
7. All pressures, throughout the entire test, shall be continuously measured and recorded with recording pressure gauges, the readings of which must be checked with a hand-pilot tester at least once at the beginning and once at the end of each flow test.
8. The results of the above-described tests shall be filed within 15 days after completion of the test. Tests shall be filed with the appropriate District Office of the New Mexico Petroleum Commission on Southeast New Mexico Packer Leakage Test Form No. 1, together with the original pressure recording gauge chart. In addition, deadweight pressure tests were taken indicated thereon. In filing the aforesaid charts, the operator may construct a pressure versus time curve for each zone of each test, indicating the pressure changes which may be reflected by the gauge charts as well as the weight pressure readings which were taken. If the pressure charts submitted, the original chart must be permanently filed in the District Office. Form C-116 shall also accompany the packer leakage test when the test period coincides with a gas-cutting test period.



MAY 20 10 08 AM '64
HOBBS OFFICE