

NEW MEXICO OIL CONSERVATION COMMISSION
WELL LOCATION AND ACREAGE DEDICATION PLAT

Form 1
Superseded C-12H
Effective 1-1-65

All distances must be from the outer boundaries of the Section

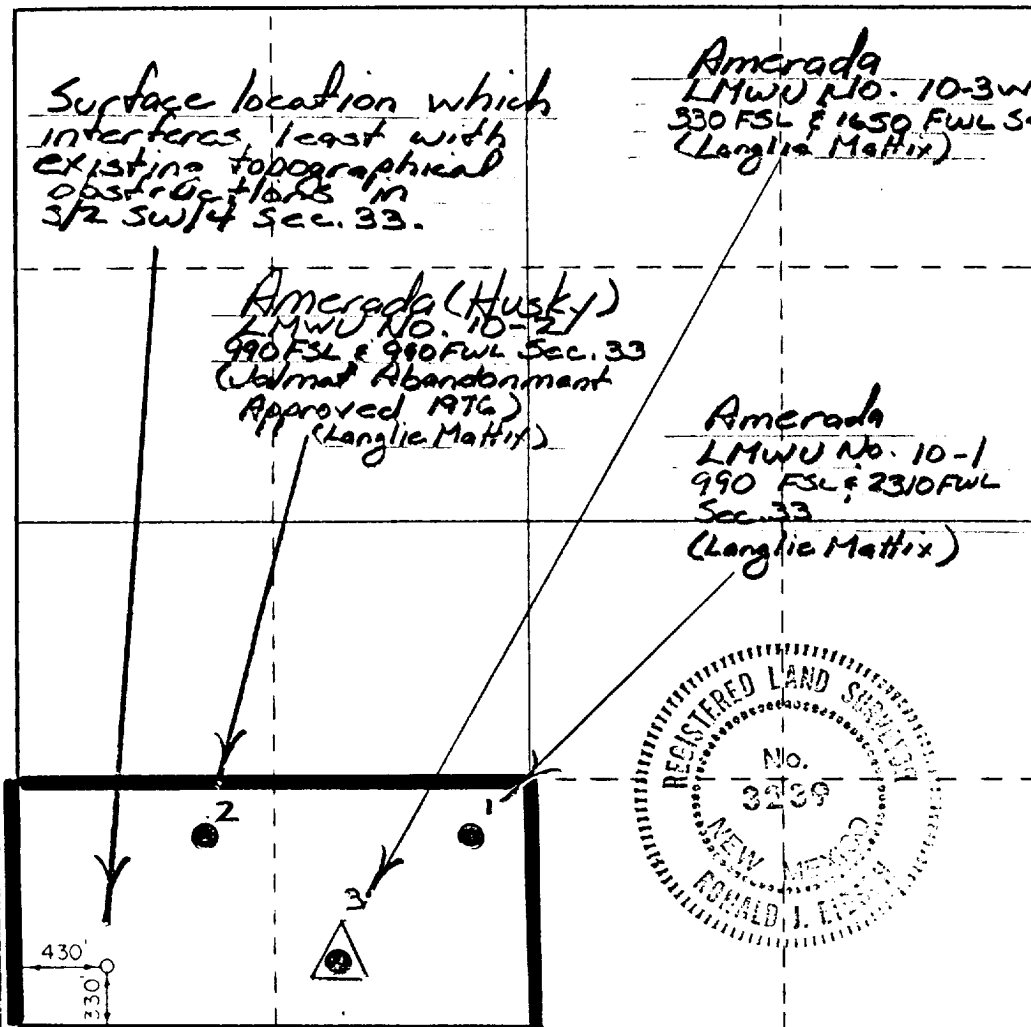
Operator Doyle Hartman		Lease Husky			Well No. 1
Unit Letter M	Section 33	Township 24 South	Range 37 East	County Lea	
Actual Footage Location of Well: 430 feet from the West line and 330 feet from the South line					
Ground Level Elev. 3251.9	Producing Formation Yates-Seven Rivers		Pool Jalmat	Dedicated Acreage 80 Acres	

- Outline the acreage dedicated to the subject well by colored pencil or hachure marks on the plat below.
- If more than one lease is dedicated to the well, outline each and identify the ownership thereof (both as to working interest and royalty).
- If more than one lease of different ownership is dedicated to the well, have the interests of all owners been consolidated by communitization, unitization, force-pooling, etc?

Yes No If answer is "yes," type of consolidation _____

If answer is "no," list the owners and tract descriptions which have actually been consolidated. (Use reverse side of this form if necessary.) _____

No allowable will be assigned to the well until all interests have been consolidated (by communitization, unitization, forced-pooling, or otherwise) or until a non-standard unit, eliminating such interests, has been approved by the Commission.



CERTIFICATION

I hereby certify that the information contained herein is true and complete to the best of my knowledge and belief.

Larry A. Nermyr
Name

Larry Nermyr
Position

Petroleum Engineer

Company
Doyle Hartman

Date
August 14, 1981

I hereby certify that the well location shown on this plat was plotted from field notes of actual surveys made by me or under my supervision, and that the same is true and correct to the best of my knowledge and belief.

Date Surveyed
August 13, 1981

Registered Professional Engineer and/or Land Surveyor

Ronald J. Eidson

Certificate No. JOHN W. WEST 8
PATRICK A. ROMERO 6
Ronald J. Eidson 37



ETB

RECEIVED

AUG 17 1981

U.S. DEPARTMENT OF THE INTERIOR
BUREAU OF LAND MANAGEMENT