

N.M. OIL COMMISSION
P.O. BOX 1900
HOBBS, NEW MEXICO 88240

SUBMIT IN DUPLICATE*
(Other instructions on reverse side)

Form approved
Budget Bureau No. 1004-0136
Expires August 31, 1985

DEPARTMENT OF THE INTERIOR
BUREAU OF LAND MANAGEMENT

APPLICATION FOR PERMIT TO DRILL, DEEPEN, OR PLUG BACK

1a. TYPE OF WORK
 DRILL DEEPEN PLUG BACK

b. TYPE OF WELL
 OIL WELL GAS WELL OTHER SINGLE ZONE MULTIPLE ZONE

2. NAME OF OPERATOR
 POGO PRODUCING COMPANY

3. ADDRESS OF OPERATOR
 P. O. BOX 10340, MIDLAND, TEXAS

4. LOCATION OF WELL (Report location clearly and in accordance with any State requirements.)*
 At surface: 1980' FNL AND 2310' FWL OF SECTION 34
 At proposed prod. zone: *Unit F*

14. DISTANCE IN MILES AND DIRECTION FROM NEAREST TOWN OR POST OFFICE*
 29 MILES WEST OF EUNICE, NEW MEXICO

15. DISTANCE FROM PROPOSED* LOCATION TO NEAREST PROPERTY OR LEASE LINE, FT. (Also to nearest drig. unit line, if any) 1980'

16. NO. OF ACRES IN LEASE 1160

17. NO. OF ACRES ASSIGNED TO THIS WELL 40

18. DISTANCE FROM PROPOSED* LOCATION TO NEAREST WELL, DRILLING, COMPLETED, OR APPLIED FOR, ON THIS LEASE, FT. 990'

19. PROPOSED DEPTH 9000'

20. ROTARY OR CABLE TOOLS ROTARY

21. ELEVATIONS (Show whether DF, RT, GR, etc.) 3666.2' GR

22. APPROX. DATE WORK WILL START* UPON APPROVAL

5. LEASE DESIGNATION AND SERIAL NO.
 NM-77060

6. IF INDIAN, ALLOTTEE OR TRIBE NAME

7. UNIT AGREEMENT NAME

8. FARM OR LEASE NAME
 RED TANK 34 FEDERAL

9. WELL NO.
 12

10. FIELD AND POOL, OR WILDCAT UNDES.
 RED TANK BONE SPRINGS

11. SEC., T., R., M., OR BLK. AND SURVEY OR AREA
 SEC. 34, T. 22 S., R. 32 E.

12. COUNTY OR PARISH 13. STATE
 LEA COUNTY NEW MEXICO

23. PROPOSED CASING AND CEMENTING PROGRAM

SIZE OF HOLE	SIZE OF CASING	WEIGHT PER FOOT	SETTING DEPTH	QUANTITY OF CEMENT
17-1/2"	13-3/8"	54.5#	800'	SUFFICIENT TO CIRCULATE
11"	8-5/8"	32#	4600'	SUFFICIENT TO CIRCULATE
7-7/8"	5-1/2"	17#	9000'	TO TIE BACK TO 3700'

AFTER SETTING PRODUCTION CASING, PAY ZONE WILL BE PERFORATED AND STIMULATED AS NECESSARY.

SEE ATTACHED FOR: SUPPLEMENTAL DRILLING DATA

- BOP SKETCH
- SURFACE USE AND OPERATIONS PLAN
- HYDROGEN SULFIDE DRILLING OPERATIONS PLAN

OPER. OGRID NO. 17841
 PROPERTY NO. 009343
 POOL CODE 51683
 EFF. DATE 4-25-94
 API NO. 30-025-32494

RECEIVED
 APR 29 1994
 10:42 AM '94

IN ABOVE SPACE DESCRIBE PROPOSED PROGRAM: If proposal is to deepen or plug back, give data on present productive zone and proposed new productive zone. If proposal is to drill or deepen directionally, give pertinent data on subsurface locations and measured and true vertical depths. Give blowout preventer program, if any.

24. SIGNED Richard L. Wright TITLE Division Operations Mgr. DATE March 29, 1994
 (This space for Federal or State office use)

PERMIT NO. _____ APPROVAL DATE _____
 APPROVED BY **(ORIG. SGD.) RICHARD L. MANUS** TITLE **AREA MANAGER** DATE 4-20-94

CONDITIONS OF APPROVAL, IF ANY:
 APPROVAL OF THIS APPLICATION DOES NOT WARRANT OR CERTIFY THAT THE APPLICANT HOLDS LEGAL OR EQUITABLE TITLE TO THOSE RIGHTS IN THE SUBJECT LEASE WHICH WOULD ENTITLE THE APPLICANT TO CONDUCT OPERATIONS. **See Instructions On Reverse Side**
 APPROVAL SUBJECT TO GENERAL REQUIREMENTS AND SPECIAL STIPULATIONS ATTACHED

Whoever, on or after January 1, 1994, makes it a crime for any person knowingly and willfully to make to any department or agency of the United States any false, fictitious or fraudulent statements or representations as to any matter within its jurisdiction.

RECEIVED

APR 22 1994

OFFICE

Submit to Appropriate
 District Office
 State Lease - 4 copies
 Fee Lease - 3 copies

State of New Mexico
 Energy, Minerals and Natural Resources Department

Form C-102
 Revised 1-1-89

OIL CONSERVATION DIVISION

P.O. Box 2088

Santa Fe, New Mexico 87504-2088

DISTRICT I

P.O. Box 1980, Hobbs, NM 88240

DISTRICT II

P.O. Drawer DD, Artesia, NM 88210

DISTRICT III

1000 Rio Brazos Rd., Aztec, NM 87410

WELL LOCATION AND ACREAGE DEDICATION PLAT

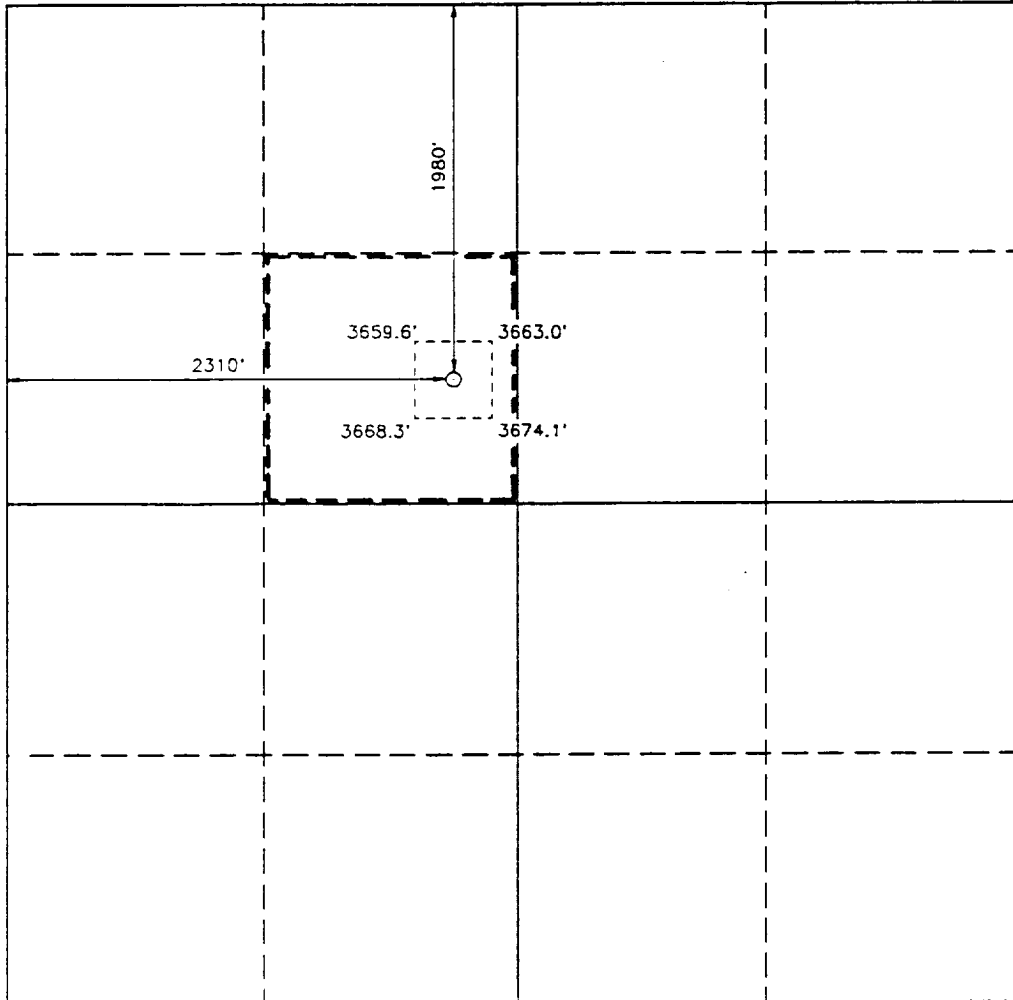
All Distances must be from the outer boundaries of the section

Operator POGO PRODUCING COMPANY			Lease RED TANK 34 FEDERAL		Well No. 12
Unit Letter F	Section 34	Township 22 SOUTH	Range 32 EAST	County LEA	

Actual Footage Location of Well:					
1980 feet from the NORTH line and		2310 feet from the WEST line			
Ground Level Elev. 3666.2'	Producing Formation BONE SPRINGS	Pool UNDES. RED TANK BONE SPRINGS		Dedicated Acreage: 40 Acres	

- Outline the acreage dedicated to the subject well by colored pencil or hachure marks on the plat below.
 - If more than one lease is dedicated to the well, outline each and identify the ownership thereof (both as to working interest and royalty).
 - If more than one lease of different ownership is dedicated to the well, have the interest of all owners been consolidated by communitization, unitization, force-pooling, etc.?

Yes No If answer is "yes" type of consolidation _____
- If answer is "no" list of owners and tract descriptions which have actually been consolidated. (Use reverse side of this form necessary.) _____
- No allowable will be assigned to the well unit all interests have been consolidated (by communitization, unitization, forced-pooling, otherwise) or until a non-standard unit, eliminating such interest, has been approved by the Division.



OPERATOR CERTIFICATION

I hereby certify the the information contained herein is true and complete to the best of my knowledge and belief.

Signature *Richard L. Wright*

Printed Name
Richard L. Wright
 Position
Division Operations Mgr.
 Company
POGO PRODUCING COMPANY
 Date
March 28, 1994

SURVEYOR CERTIFICATION

I hereby certify that the well location shown on this plat was plotted from field notes of actual surveys made by me or under my supervision, and that the same is true and correct to the best of my knowledge and belief.

Date Surveyed
OCTOBER 6, 1993

Signature & Seal of Professional Surveyor
John W. West

Certificate No. JOHN W. WEST, 876
 RONALD J. EDSON, 3239
 GARY L. JONES, 7077

RECEIVED

APR 22 1994

**COMMUNITY
OFFICE**

SUPPLEMENTAL DRILLING DATA
POGO PRODUCING COMPANY
RED TANK 34 FEDERAL WELL NO.12

1. SURFACE FORMATION: Quaternary.

2. ESTIMATED TOPS OF GEOLOGIC MARKERS:

Anhydrite	850'
Delaware Lime	4800'
Cherry Canyon	6100'
Brushy Canyon	7400'
Bone Springs	8800'

3. ANTICIPATED POSSIBLE HYDROCARBON BEARING ZONES:

Delaware	Oil
Bone Springs	Oil

4. PROPOSED CASING AND CEMENTING PROGRAM:

CASING SIZE	SETTING DEPTH		WEIGHT	GRADE	JOINT
	FROM	TO			
13-3/8"	0	800'	54.5#	J-55	STC
8-5/8"	0	4300'	32#	J-55	STC
"	4300'	4600'	32#	S-80	STC
5-1/2"	0	1000'	17#	N-80	LTC
"	1000'	7000'	17#	J-55	LTC
"	7000'	9000'	17#	N-80	LTC

MINIMUM
DESIGN FACTORS: COLLAPSE 1.125 BURST 1.1 TENSION 1.7

13-3/8" casing to be cemented with 500 sacks of light cement tailed in with 200 sacks of Class "C" with 2% CaCl. Cement to circulate.

8-5/8" casing to be cemented with 1200 sacks of light cement with 10% salt tailed in with 200 sacks of premium cement with 1% CaCl. Cement to circulate.

5-1/2" production casing is to be cemented with approximately 500 sacks

RECEIVED

APR 28 1994

OFFICE

of light cement followed by 400 sacks of premium cement. Cement to tie back to 3600 feet.

If, during drilling operations, need for stage cementing of casing is indicated, staging tool(s) will be run and positioned to best suit hole conditions at time casing is run.

Cement volumes may be adjusted and cement may have lost circulation and/or other additives depending on hole conditions at the time casing is run.

5. PRESSURE CONTROL EQUIPMENT:

Blowout prevention equipment, while drilling the 11" hole, will be either a 3000 psi working pressure double ram type preventer or a 3000 psi working pressure annular type preventer.

Blow out prevention equipment, while drilling below the 8-5/8" casing seat, will be a 3000 psi working pressure BOP stack. A BOP sketch is attached.

6. CIRCULATING MEDIUM:

Surface to 800 feet: Fresh water spud mud. Viscosity 30 to 36 as required for hole cleaning.

800 feet to 4600 feet: Brine conditioned as necessary for control of viscosity. Weight 9.8 to 10. pH 9 to 10. Viscosity 32 to 36.

4600 feet to T.D.: Water base drilling fluid conditioned as necessary for control of weight, viscosity, pH and water-loss. Weight 9 to 10. Viscosity 38-45. pH 9 to 10. Filtrate while drilling pay zone 6 to 15.

7. AUXILIARY EQUIPMENT:

A mud logging trailer will be in use while drilling below the intermediate casing.

RECEIVED

APR 22 1994

OFFICE

8. TESTING, LOGGING, AND CORING PROGRAM:

Drill stem tests will be made when well data indicate a test is warranted.

It is planned that electric logs will include GR-CNL-Density logs and GR-DLL logs.

No coring is planned.

9. ABNORMAL PRESSURES, TEMPERATURES, OR HYDROGEN SULFIDE GAS:

No abnormal pressures or temperatures are expected.

Expected bottom hole pressure is about 3600 psi.

Expected bottom hole temperature is about 125 degrees Fahr.

No hydrogen sulfide gas is expected. The production stream of Pogo Producing Company's wells in this area have been tested specifically for hydrogen sulfide gas and test results were negative. However, since it is possible that low-volume hydrogen sulfide gas may be present in permeable water zones of the Castile formation, drilling operations below the surface casing will be in accordance with the attached "HYDROGEN SULFIDE DRILLING OPERATIONS PLAN" until intermediate casing is set and cemented and this possible source of hydrogen sulfide gas is cased off.

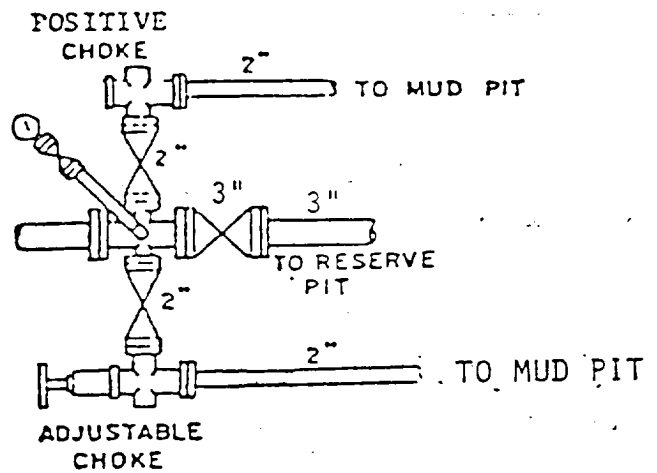
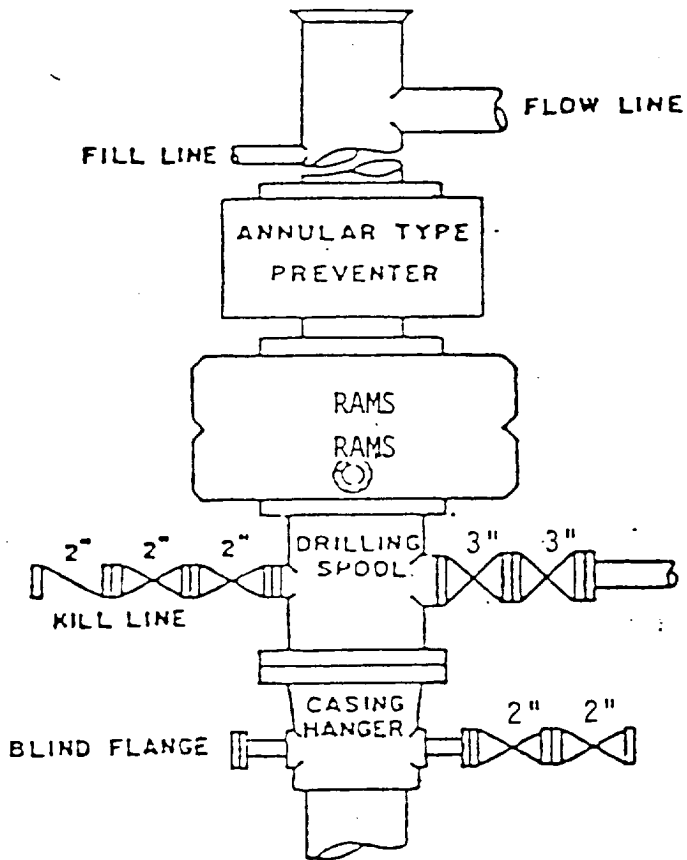
10. ANTICIPATED STARTING DATE:

It is planned that operations will commence upon approval of this application, with drilling and completion operations lasting about 30 days.

RECEIVED

APR 22 1994

OFFICE



BOP STACK

3000 PSI WORKING PRESSURE

BOP ARRANGEMENT

RECEIVED

APR 28 1994

OFFICE