

Office
 District I – (575) 393-6161
 1625 N. French Dr., Hobbs, NM 88240
 District II – (575) 748-1283
 811 S. First St., Artesia, NM 88210
 District III – (505) 334-6178
 1000 Rio Brazos Rd., Aztec, NM 87410
 District IV – (505) 476-3460
 1220 S. St. Francis Dr., Santa Fe, NM
 87505

State of New Mexico
 Energy, Minerals and Natural Resources

Form C-103
 Revised July 18, 2013

OIL CONSERVATION DIVISION
 1220 South St. Francis Dr.
 Santa Fe, NM 87505

WELL API NO. 30-039-25563
5. Indicate Type of Lease STATE <input type="checkbox"/> FEE <input checked="" type="checkbox"/>
6. State Oil & Gas Lease No.
7. Lease Name or Unit Agreement Name Rosa Unit
8. Well Number 64M
9. OGRID Number 289408
10. Pool name or Wildcat Blanco Mesaverde / Basin Dakota
4. Well Location Unit Letter <u>F</u> : <u>1850'</u> feet from the <u>FNL</u> line and <u>1800'</u> feet from the <u>FWL</u> line Section <u>29</u> Township <u>31N</u> Range <u>5W</u> NMPM County <u>Rio Arriba</u>
11. Elevation (Show whether DR, RKB, RT, GR, etc.) 6388'

12. Check Appropriate Box to Indicate Nature of Notice, Report or Other Data

NOTICE OF INTENTION TO:

PERFORM REMEDIAL WORK ☐ PLUG AND ABANDON ☐
 TEMPORARILY ABANDON ☐ CHANGE PLANS ☐
 PULL OR ALTER CASING ☐ MULTIPLE COMPL ☐
 DOWNHOLE COMMINGLE ☒
 CLOSED-LOOP SYSTEM ☐
 OTHER: ☐

SUBSEQUENT REPORT OF:

REMEDIAL WORK ☐ ALTERING CASING ☐
 COMMENCE DRILLING OPNS. ☐ P AND A ☐
 CASING/CEMENT JOB ☐
 OTHER: ☐

13. Describe proposed or completed operations. (Clearly state all pertinent details, and give pertinent dates, including estimated date of starting any proposed work). SEE RULE 19.15.7.14 NMAC. For Multiple Completions: Attach wellbore diagram of proposed completion or recompletion.

Pre-approved Pool Division Order R-13122.

Pools to be commingled: Blanco Mesaverde (72319) and Basin Dakota (71599).

Perforated Intervals:

Blanco Mesaverde: 5462' - 6051'

Basin Dakota: 7934' - 8019'

Fixed percentage allocation based upon production data 50.6% Blanco Mesaverde and 49.4% Basin Dakota. This is based upon the historic production of both the Mesaverde and Dakota production zones within the well.

Commingling will not reduce the value of reserves.

Interest owners in the spacing unit have not been notified of the intent of the downhole commingle per order R-12991. BLM has been notified on sundry notice form 3160-5.

Spud Date:

Rig Release Date:

I hereby certify that the information above is true and complete to the best of my knowledge and belief.

SIGNATURE Marie E. Florez TITLE Regulatory Specialist DATE 1/26/2021

Type or print name Marie E. Florez E-mail address: mflorez@logosresourcesllc.com PHONE: 505-787-2218

For State Use Only

APPROVED BY: _____ TITLE _____ DATE _____

Conditions of Approval (if any):



DOWNHOLE COMMINGLE PROCEDURE AND ALLOCATION-NMOCD (2021)

Rosa Unit 64M
30-039-25563
1850' FNL & 1800' FWL
Section 29, T31N, R05W
Rio Arriba, New Mexico
LAT: 36.8726883° N LONG: -107.3885422° W
Mesaverde/Dakota

PROJECT OBJECTIVE:

Remove packer and downhole commingle Mesaverde and Dakota.

WORKOVER PROCEDURE:

1. Hold safety meeting. MIRU workover rig. Place fire and safety equipment in strategic locations. Comply with all LOGOS, BLM, and NMOCD rules and regulations.
2. Lay flow lines. Check and record casing and tubing pressures. Rig up blow lines from casing valves to rig pit. Kill well if necessary.
3. Nipple down wellhead and nipple up BOP.
4. Release Mesaverde tubing string. Trip out of hole with Mesaverde tubing string and lay down.
5. Release Dakota tubing string. Trip out of hole with Dakota tubing string and lay down.
6. Run in hole with packer plucker to retrieve Model D Packer at 6150'. Trip out of hole with packer plucker assembly and string.
7. Run in hole with single 2-3/8" production tubing string.
8. Return to production as a Mesaverde/Dakota commingle.

PRODUCTION ALLOCATION

Historic production data from both zones in this well was gathered and analyzed. Cumulative production was used to determine allocations and allocations were verified with recent production history.

Cumulative Production

Total Cumulative Production	1,323 MMcf
Cumulative MV production	669 MMcf
Cumulative DK production	654 MMcf

MV allocation = MV cumulative/total cumulative = 669/1,323 = **50.6%**

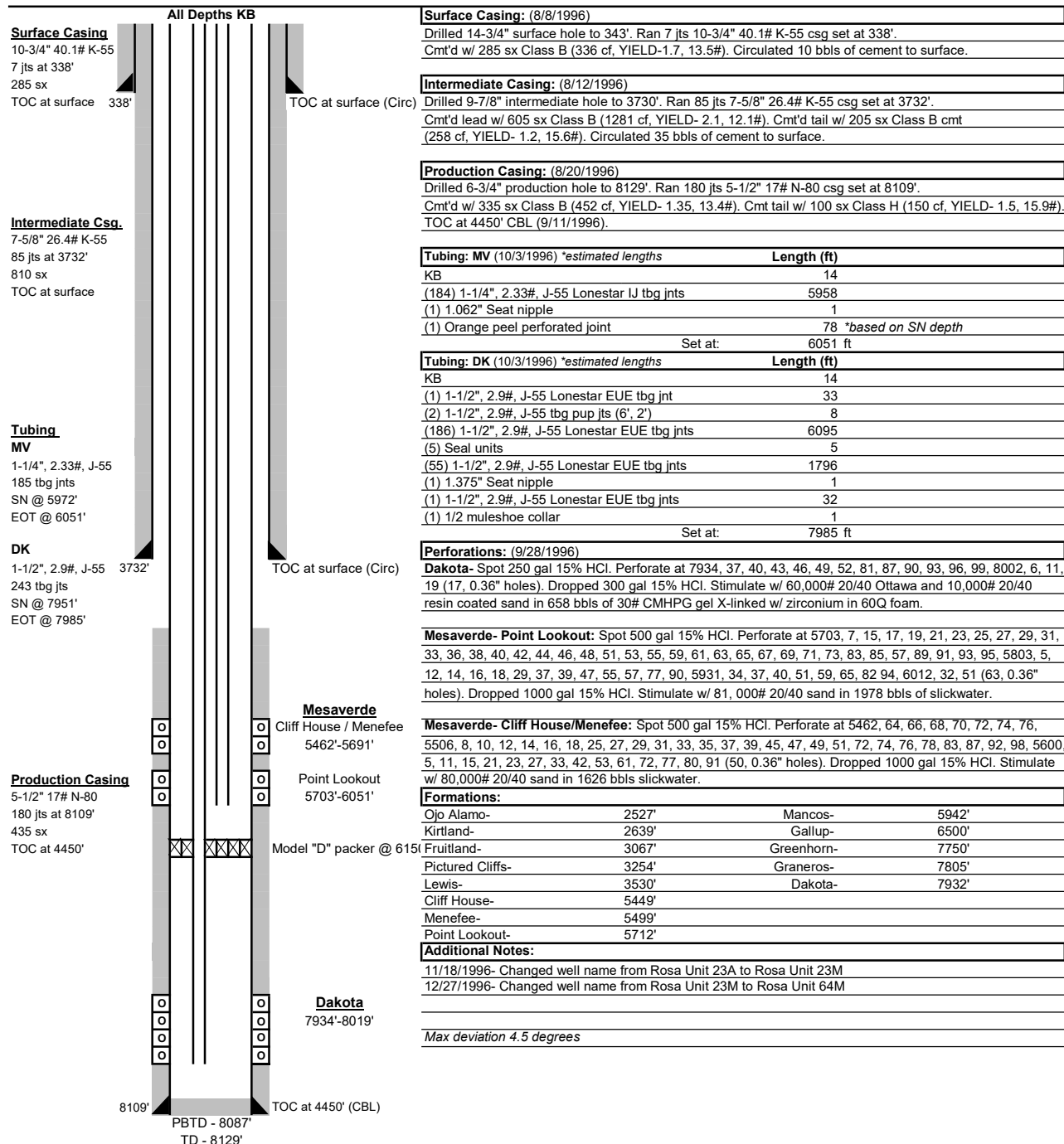
DK allocation = DK cumulative /total cumulative = 654/1,323 = **49.4%**



Wellbore Schematic

Well Name: Rosa Unit 64M
 Location: Sec 29, T31N, R05W 1850' FNL & 1800' FWL
 County: Rio Arriba
 API #: 30-039-25563
 Co-ordinates: Lat 36.8726883°, -107.3885422°
 Elevations: GROUND: 6388'
 KB: 6402'
 Depths (KB): PBDT: 8087'
 TD: 8129'

Date Prepared: 12/29/2020 Gomez
 Reviewed by: 12/31/2020 Hespe
 Spud Date: 8/7/1996
 Completion Date: 9/28/1996
 Last Workover Date:

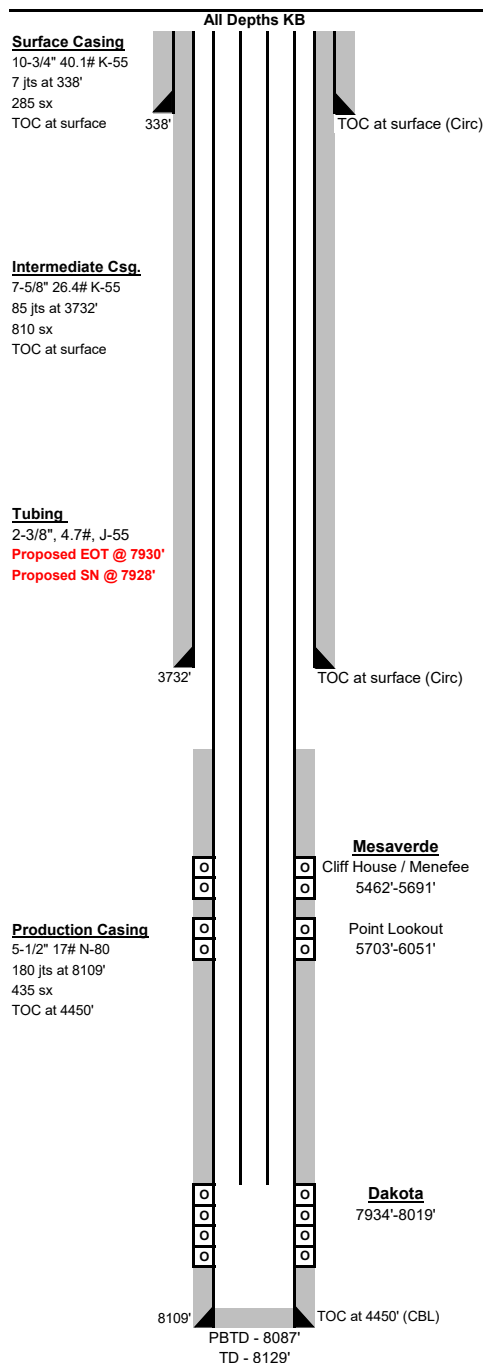




Wellbore Schematic

Well Name: Rosa Unit 64M
 Location: Sec 29, T31N, R05W 1850' FNL & 1800' FWL
 County: Rio Arriba
 API #: 30-039-25563
 Co-ordinates: Lat 36.8726883°, -107.3885422°
 Elevations: GROUND: 6388'
 KB: 6402'
 Depths (KB): PBTD: 8087'
 TD: 8129'

Date Prepared: 2/4/2021 Hespe
 Last Updated:
 Spud Date: 8/7/1996
 Completion Date: 9/28/1996
 Last Workover Date:



Surface Casing: (8/8/1996)
 Drilled 14-3/4" surface hole to 343'. Ran 7 jts 10-3/4" 40.1# K-55 csg set at 338'.
 Cmt'd w/ 285 sx Class B (336 cf, YIELD-1.7, 13.5#). Circulated 10 bbls of cement to surface.

Intermediate Casing: (8/12/1996)
 Drilled 9-7/8" intermediate hole to 3730'. Ran 85 jts 7-5/8" 26.4# K-55 csg set at 3732'.
 Cmt'd lead w/ 605 sx Class B (1281 cf, YIELD- 2.1, 12.1#). Cmt'd tail w/ 205 sx Class B cmt (258 cf, YIELD- 1.2, 15.6#). Circulated 35 bbls of cement to surface.

Production Casing: (8/20/1996)
 Drilled 6-3/4" production hole to 8129'. Ran 180 jts 5-1/2" 17# N-80 csg set at 8109'.
 Cmt'd w/ 335 sx Class B (452 cf, YIELD- 1.35, 13.4#). Cmt tail w/ 100 sx Class H (150 cf, YIELD- 1.5, 15.9#).
 TOC at 4450' CBL (9/11/1996).

Tubing:	Length (ft)
KB	14
(~251) 2-3/8" 4.7# J-55 tubing joints	7880
(1) 2-3/8"x2" 4.7# J-55 tubing sub (marker joint)	2
(1) 2-3/8" 4.7# J-55 tubing joint	32
Seat Nipple (1.78" ID)	1
1/2 Muleshoe collar w/ expendable check	1

Lengths estimated based on proposed landing depth

Set at: 7930 ft

Perforations: (9/28/1996)
Dakota- Spot 250 gal 15% HCl. Perforate at 7934, 37, 40, 43, 46, 49, 52, 81, 87, 90, 93, 96, 99, 8002, 6, 11, 19 (17, 0.36" holes). Dropped 300 gal 15% HCl. Stimulate w/ 60,000# 20/40 Ottawa and 10,000# 20/40 resin coated sand in 658 bbls of 30# CMHPG gel X-linked w/ zirconium in 60Q foam.

Mesaverde- Point Lookout: Spot 500 gal 15% HCl. Perforate at 5703, 7, 15, 17, 19, 21, 23, 25, 27, 29, 31, 33, 36, 38, 40, 42, 44, 46, 48, 51, 53, 55, 59, 61, 63, 65, 67, 69, 71, 73, 83, 85, 57, 89, 91, 93, 95, 5803, 5, 12, 14, 16, 18, 29, 37, 39, 47, 55, 57, 77, 90, 5931, 34, 37, 40, 51, 59, 65, 82, 94, 6012, 32, 51 (63, 0.36" holes). Dropped 1000 gal 15% HCl. Stimulate w/ 81, 000# 20/40 sand in 1978 bbls of slickwater.

Mesaverde- Cliff House/Menefee: Spot 500 gal 15% HCl. Perforate at 5462, 64, 66, 68, 70, 72, 74, 76, 5506, 8, 10, 12, 14, 16, 18, 25, 27, 29, 31, 33, 35, 37, 39, 45, 47, 49, 51, 72, 74, 76, 78, 83, 87, 92, 98, 5600, 5, 11, 15, 21, 23, 27, 33, 42, 53, 61, 72, 77, 80, 91 (50, 0.36" holes). Dropped 1000 gal 15% HCl. Stimulate w/ 80,000# 20/40 sand in 1626 bbls slickwater.

Formations:	
Ojo Alamo-	2527'
Kirtland-	2639'
Fruitland-	3067'
Pictured Cliffs-	3254'
Lewis-	3530'
Cliff House-	5449'
Menefee-	5499'
Point Lookout-	5712'
Mancos-	5942'
Gallup-	6500'
Greenhorn-	7750'
Graneros-	7805'
Dakota-	7932'

Additional Notes:
 11/18/1996- Changed well name from Rosa Unit 23A to Rosa Unit 23M
 12/27/1996- Changed well name from Rosa Unit 23M to Rosa Unit 64M
 Max deviation 4.5 degrees

Proposed tubing landing depth at 7930' or within one joint higher.

District I
1625 N. French Dr., Hobbs, NM 88240
Phone:(575) 393-6161 Fax:(575) 393-0720
District II
811 S. First St., Artesia, NM 88210
Phone:(575) 748-1283 Fax:(575) 748-9720
District III
1000 Rio Brazos Rd., Aztec, NM 87410
Phone:(505) 334-6178 Fax:(505) 334-6170
District IV
1220 S. St Francis Dr., Santa Fe, NM 87505
Phone:(505) 476-3470 Fax:(505) 476-3462

State of New Mexico
Energy, Minerals and Natural Resources
Oil Conservation Division
1220 S. St Francis Dr.
Santa Fe, NM 87505

COMMENTS

Action 16949

COMMENTS

Operator: LOGOS OPERATING, LLC 2010 Afton Place Farmington, NM87401			OGRID: 289408	Action Number: 16949	Action Type: C-107A
Created By	Comment			Comment Date	
kpickford	KP GEO Review 2/8/2021			02/08/2021	

District I
1625 N. French Dr., Hobbs, NM 88240
Phone:(575) 393-6161 Fax:(575) 393-0720
District II
811 S. First St., Artesia, NM 88210
Phone:(575) 748-1283 Fax:(575) 748-9720
District III
1000 Rio Brazos Rd., Aztec, NM 87410
Phone:(505) 334-6178 Fax:(505) 334-6170
District IV
1220 S. St Francis Dr., Santa Fe, NM 87505
Phone:(505) 476-3470 Fax:(505) 476-3462

State of New Mexico
Energy, Minerals and Natural Resources
Oil Conservation Division
1220 S. St Francis Dr.
Santa Fe, NM 87505

CONDITIONS

Action 16949

CONDITIONS OF APPROVAL

Operator:	LOGOS OPERATING, LLC	2010 Afton Place	Farmington, NM87401	OGRID:	289408	Action Number:	16949	Action Type:	C-107A
OCD Reviewer	Condition								
kpickford	None								