

District I  
1625 N. French Drive, Hobbs, NM 88240  
District II  
811 S. First St., Artesia, NM 88210  
District III  
1000 Rio Brazos Road, Aztec, NM 87410  
District IV  
1220 S. St Francis Dr, Santa Fe, NM  
87505

State of New Mexico  
Energy, Minerals and Natural Resources Department  
**OIL CONSERVATION DIVISION**  
1220 S. St Francis Drive  
Santa Fe, New Mexico 87505

Form C-107-B  
Revised August 1, 2011

Submit the original  
application to the Santa Fe  
office with one copy to the  
appropriate District Office.

### APPLICATION FOR SURFACE COMMINGLING (DIVERSE OWNERSHIP)

OPERATOR NAME: EOG Resources, Inc.  
OPERATOR ADDRESS: P.O. Box 2267 Midland, Texas 79702  
APPLICATION TYPE:

☐ Pool Commingling ☐ Lease Commingling ☒ Pool and Lease Commingling ☐ Off-Lease Storage and Measurement (Only if not Surface Commingled)

LEASE TYPE: ☐ Fee ☒ State ☐ Federal

Is this an Amendment to existing Order? ☒ Yes ☐ No If "Yes", please include the appropriate Order No. \_\_\_\_\_  
Have the Bureau of Land Management (BLM) and State Land office (SLO) been notified in writing of the proposed commingling  
☒ Yes ☐ No

#### (A) POOL COMMINGLING

Please attach sheets with the following information

(1) Pool Names and Codes	Gravities / BTU of Non-Commingled Production	Calculated Gravities / BTU of Commingled Production		Calculated Value of Commingled Production	Volumes

- (2) Are any wells producing at top allowables? ☐ Yes ☒ No  
(3) Has all interest owners been notified by certified mail of the proposed commingling? ☒ Yes ☐ No.  
(4) Measurement type: ☒ Metering ☐ Other (Specify)  
(5) Will commingling decrease the value of production? ☐ Yes ☒ No If "yes", describe why commingling should be approved

#### (B) LEASE COMMINGLING

Please attach sheets with the following information

- (1) Pool Name and Code.  
(2) Is all production from same source of supply? ☐ Yes ☐ No  
(3) Has all interest owners been notified by certified mail of the proposed commingling? ☒ Yes ☐ No  
(4) Measurement type: ☒ Metering ☐ Other (Specify)

#### (C) POOL and LEASE COMMINGLING

Please attach sheets with the following information

- (1) Complete Sections A and E.

#### (D) OFF-LEASE STORAGE and MEASUREMENT

Please attached sheets with the following information

- (1) Is all production from same source of supply? ☐ Yes ☐ No  
(2) Include proof of notice to all interest owners.

#### (E) ADDITIONAL INFORMATION (for all application types)

Please attach sheets with the following information

- (1) A schematic diagram of facility, including legal location.  
(2) A plat with lease boundaries showing all well and facility locations. Include lease numbers if Federal or State lands are involved.  
(3) Lease Names, Lease and Well Numbers, and API Numbers.

I hereby certify that the information above is true and complete to the best of my knowledge and belief.

SIGNATURE: Lisa Trascher TITLE: Regulatory Specialist DATE: 03/10/2020

TYPE OR PRINT NAME Lisa Trascher TELEPHONE NO.: 432-247-6331

E-MAIL ADDRESS: lisa\_trascher@eogresources.com

**APPLICATION FOR SURFACE POOL/LEASE COMMINGLING**

EOG Resources, Inc. ("EOG") respectfully requests to amend the approved commingle PLC-654 to surface pool/lease commingle oil & gas from all existing and future wells in Section 2 in Township 26 South, Range 30 East within the Bone Spring and Wolfcamp pools listed below, for Leases ST NM VB-839-1 and ST NM VB-850-1. These spacing units are initially dedicated to the following wells:

Well Name	Location	API #	Pool	Oil BPD	Gravities	MSCFPD
QUAIL 2 STATE COM #701H	A-02-26S-30E	30-015-47121	[98220] Purple Sage; Wolfcamp	*1735	*56.6	*7363
QUAIL 2 STATE COM #702H	B-02-26S-30E	30-015-47122	[98220] Purple Sage; Wolfcamp	*1560	*56.6	*6618
QUAIL 2 STATE COM #720H	A-02-26S-30E	30-015-47123	[98220] Purple Sage; Wolfcamp	*1837	*56.6	*9707
QUAIL 2 STATE COM #721H	B-02-26S-30E	30-015-47120	[98220] Purple Sage; Wolfcamp	*1648	*56.6	*8712
QUAIL 2 STATE COM #705H	D-02-26S-30E	30-015-46279	[98220] Purple Sage; Wolfcamp	824	57.3	3130
QUAIL 2 STATE COM #706H	C-02-26S-30E	30-015-46275	[98220] Purple Sage; Wolfcamp	871	57.2	3644
QUAIL 2 STATE COM #722H	C-02-26S-30E	30-015-46274	[98220] Purple Sage; Wolfcamp	1007	52.3	4717
QUAIL 2 STATE COM #724H	C-02-26S-30E	30-015-46276	[98220] Purple Sage; Wolfcamp	892	53	4675
QUAIL 2 STATE COM #725H	D-02-26S-30E	30-015-46277	[98220] Purple Sage; Wolfcamp	856	57.1	4138
QUAIL 2 STATE COM #768H	D-02-26S-30E	30-015-46278	[98220] Purple Sage; Wolfcamp	534	62.3	6244
QUAIL 2 STATE COM #581H	A-02-26S-30E	30-015-45787	[97814] Wildcat G-015 S2630010; Bone Spring	233	55.8	931
QUAIL 2 STATE #594H	C-02-26S-30E	30-015-75788	[97814] Wildcat G-015 S2630010; Bone Spring	248	56.6	875
QUAIL 2 STATE COM #707H	C-02-26S-30E	30-015-45793	[98220] Purple Sage; Wolfcamp	1039	57.7	4169

\*projected, pending completion

**GENERAL INFORMATION :**

- State lease ST NM VB-839-1 covers 160 acres including the NE4 of Section 2 in Township 26 South, Range 30 East, Eddy County, New Mexico.
- State lease ST NM VB-850-1 covers 480 acres including the NW4 & S2 of Section 2 in Township 26 South, Range 30 East, Eddy County, New Mexico.
- The central tank battery to service the subject wells is located in the SWNE of Section 2 in Township 26 South, Range 30 East on State lease ST NM VB-839-1.
- An amendment to the PLC-654 commingle production from the subject wells is being submitted to the NMOCD and the New Mexico State Land Office.
- Enclosed herewith is (1) a map that displays the leases, the location of the subject wells, and the proposed CTB, (2) a process flow diagram, (3) and the C-102 plat for each of the wells.

**FUTURE ADDITIONS**

Pursuant to Statewide rule 19.15.12.10 (C)(4)(g) EOG Resources, Inc. respectfully requests the option to include additional pools or leases within the following parameters:

- EOG may add additional production from the Bone Spring and Wolfcamp Pools (Purple Sage; Wolfcamp [98220] and Wildcat G-015 S263001O; Bone Spring [97814]) from Lease's ST NM VB-839-1, ST NM VB-850-1.

EOG respectfully requests authority to add additional wells contained within the spacing units identified and approved in this application by filing a Subsequent Sundry Report to the Engineering Bureau in Santa Fe for Federal and filing a Sundry Notice C-103 and C-102 with the NMOCD. Notice to owners shall not be required when amending the application to add wells contained within spacing units previously approved for commingling authority.

**PROCESS AND FLOW DESCRIPTIONS:**

The water will be measured using a turbine meter. The water from each separator is combined in a common header and flows into (4) 400 barrel coated steel tanks. Guided wave radar is used to measure water volumes in these tanks. The oil from each separator will be combined into a common header and flow into a heated horizontal separator (HHS) to aid separation of water entrained in the oil. Water from the heated separator flows into the common water header connected to the (4) 400 barrel water tanks. The water is then pumped and/or trucked to a salt water disposal well. The oil from the heated separator flows through a vapor recovery tower (VRT) where gas is allowed to breakout at a lower pressure, and then the oil flows into (8) 400 barrel coated steel tanks. Guided wave radar is used to measure water and oil volumes in these tanks. Oil is pumped out of the tanks through a Coriolis meter into a truck or a pipeline. Every tank utilizes a guided wave radar to determine the volume of product in each. After the gas from each separator is measured it is combined into a common header. The gas from the heated separator has the option to go to the VRT or to the gas header. If the gas goes to the VRT it is allocated back to the wells with the VRU meter. If the gas goes to the gas header instead, there is a flash meter (\*1111111) that allocates that volume back to the wells based on oil volumes. The gas flows through the header to a custody transfer orifice meter (#67636351) that serves as our lease production meter. If the pipeline is experiencing problems and cannot take any gas, the gas will flow through the high pressure flare meter (#67636356) to the flare. If an individual well needed to be flared for any operation reason it will be manually routed through the individual well flare meter (#67636357) to the flare. The overhead gas from the vapor recovery tower is compressed by a vapor recovery compressor and then measured by a custody transfer Emerson orifice meter (#67636386). The gas from the vapor recovery system combines with the gas from the lease production meter and flows into our gas gathering pipeline system downstream of the lease production meter.

\*Meter numbers will be provided upon installation of meters and completion of the facility.

The production from each well will flow into a dedicated 3-phase separator. The production stream will be separated into 3 independent streams (gas, oil, and water) by the separator and each stream will be measured individually after it exits the separator. The gas will be measured using a senior orifice meter before flowing into a common header. Process gas used is allocated to the wells on a mass balance basis based on this measurement. The remaining residue gas is allocated to the wells by energy balance based off of routine gas sampling at the meter. Gas measurements on the high pressure separator are aligned with API MPMS 20.1

QUAIL 2 STATE COM #581H gas allocation meter is (S/N 77699301)

QUAIL 2 STATE #594H gas allocation meter is (S/N 77699302)

QUAIL 2 STATE COM #705H gas allocation meter is (S/N 77699304)

QUAIL 2 STATE COM #706H gas allocation meter is (S/N 77699306)

QUAIL 2 STATE COM #707H gas allocation meter is (S/N 77699303)

QUAIL 2 STATE COM #722H gas allocation meter is (S/N 77699308)

QUAIL 2 STATE COM #724H gas allocation meter is (S/N 77699309)

QUAIL 2 STATE COM #725H gas allocation meter is (S/N 77699307)

QUAIL 2 STATE COM #768H gas allocation meter is (S/N 77699305)

QUAIL 2 STATE COM #701H gas allocation meter is (S/N \*1111111)

QUAIL 2 STATE COM #702H gas allocation meter is (S/N \*1111111)

QUAIL 2 STATE COM #720H gas allocation meter is (S/N \*1111111)

QUAIL 2 STATE COM #721H gas allocation meter is (S/N \*1111111)

The oil from the separators will be measured using a Coriolis meter. Oil measurements on the high pressure separator are aligned with API MPMS 20.1

QUAIL 2 STATE COM #581H oil allocation meter is (S/N 10-76654)

QUAIL 2 STATE #594H oil allocation meter is (S/N 10-76672)

QUAIL 2 STATE COM #705H oil allocation meter is (S/N 10-76674)

QUAIL 2 STATE COM #706H oil allocation meter is (S/N 10-76675)

QUAIL 2 STATE COM #707H oil allocation meter is (S/N 10-76009)

QUAIL 2 STATE COM #722H oil allocation meter is (S/N 10-76008)

QUAIL 2 STATE COM #724H oil allocation meter is (S/N 10-76676)

QUAIL 2 STATE COM #725H oil allocation meter is (S/N 10-76677)  
QUAIL 2 STATE COM #768H oil allocation meter is (S/N 10-76682)  
QUAIL 2 STATE COM #701H oil allocation meter is (S/N \*1111111)  
QUAIL 2 STATE COM #702H oil allocation meter is (S/N \*1111111)  
QUAIL 2 STATE COM #720H oil allocation meter is (S/N \*1111111)  
QUAIL 2 STATE COM #721H oil allocation meter is (S/N \*1111111)

The water will be measured using a coriolis meter. The water from each separator is combined in a common header and flows into (2) 750 barrel internally coated steel tanks. Guided wave radar is used to measure water volumes in these tanks. The oil from each separator will be combined into a common header and flow into a heated 3-phase separator to aid separation of water entrained in the oil.

Water from the heated separator flows into the common water header connected to the (2) 750 barrel water tanks. The water is then pumped and/or trucked to water reuse or disposal well.

The oil from the heated 3-phase separator flows through a vapor recovery tower (VRT) where gas is allowed to breakout at a lower pressure, and then the oil flows into (4) 750 barrel coated steel tanks. Guided wave radar is used to measure oil volumes in these tanks and can be used for volume verification during diagnosis of upset conditions. Oil is pumped out of the tanks through a LACT with Coriolis measurement into a truck or a pipeline. The LACT is the custody transfer point and the measurement point for oil sales.

After the gas from each separator is measured it is combined into a common header. The gas from the heated 3-phase separator also flows into this header. The gas flows through the header to a custody transfer senior orifice meter (#77699371) that serves as the lease gas production meter. If the pipeline is experiencing problems and gas takeaway rates are reduced, the gas will flow through the produced gas emergency flare meter (#77699356) to the flare. If an individual well is required to be flared for any safety or operational reason it will be manually routed through the individual well flare meter (#77699357) to the flare. The overhead gas from the vapor recovery tower is compressed by an electric drive vapor recovery compressor and then measured by a custody transfer senior orifice meter (#77699386). The gas from the vapor recovery system combines with the gas from the lease production meter and flows into the gas gathering pipeline system.

\*Meter numbers will be provided upon installation of meters and completion of the facility.



P.O. Box 2267, Midland, Texas 79702  
Phone: (432) 686-3640

Date: December 1, 2020

To: State of New Mexico Oil Conservation Division  
New Mexico State Land Office

Re: Surface Lease Commingling Amendment; Quail 2 State 594H, Quail 2 State Com 581H, 701H, 702H, 705H, 706H, 707H, 720H, 721H 722H, 724H, 725H and 768H

To whom it may concern:

This letter serves to notice you that the ownership of the following wells is identical in working, royalty, overriding royalty interest and percentages as defined in 19.15.12.7 NMAC:

Well Name	Location	API #	Pool	Status
Quail 2 State #594H	C-02-26S-30E	30-015-45788	Wildcat G-015 S263001O; Bone Spring [97814]	Producing
Quail 2 State Com #581H	A-02-26S-30E	30-015-45787	Wildcat G-015 S263001O; Bone Spring [97814]	Producing
Quail 2 State Com #701H	A-02-26S-30E	30-015-47121	Purple Sage; Wolfcamp [98220]	Permitted
Quail 2 State Com #702H	B-02-26S-30E	30-015-47122	Purple Sage; Wolfcamp [98220]	Permitted
Quail 2 State Com #705H	D-02-26S-30E	30-015-46279	Purple Sage; Wolfcamp [98220]	Producing
Quail 2 State Com #706H	C-02-26S-30E	30-015-46275	Purple Sage; Wolfcamp [98220]	Producing
Quail 2 State Com #707H	C-02-26S-30E	30-015-45793	Purple Sage; Wolfcamp [98220]	Producing
Quail 2 State Com #720H	A-02-26S-30E	30-015-47123	Purple Sage; Wolfcamp [98220]	Permitted
Quail 2 State Com #721H	B-02-26S-30E	30-015-47120	Purple Sage; Wolfcamp [98220]	Permitted
Quail 2 State Com #722H	C-02-26S-30E	30-015-46274	Purple Sage; Wolfcamp [98220]	Producing
Quail 2 State Com #724H	C-02-26S-30E	30-015-46276	Purple Sage; Wolfcamp [98220]	Producing
Quail 2 State Com #725H	D-02-26S-30E	30-015-46277	Purple Sage; Wolfcamp [98220]	Producing
Quail 2 State Com #768H	D-02-26S-30E	30-015-46278	Purple Sage; Wolfcamp [98220]	Producing

I certify that this information is true and correct to the best of my knowledge.

Sincerely,

**EOG Resources, Inc.**

By: Chloe Sawtelle  
Chloe Sawtelle  
Sr. Landman

# QUAIL 2 STATE COM SURFACE COMMINGLING PLAT

**T25S-R30E**

**T26S-R30E**

- VB-839-1
- VB-850-1
- Proposed Well Bore
- Flowlines
- QUAIL 2 STATE COM CTB
- PAD
- All of Section 2 – PUN 1385583 – Wolfcamp
- E2E2 Sec 2 – PUN 1378814 – Bone Spring

API #	Well Name
30-015-47121	QUAIL 2 STATE COM #701H
30-015-47122	QUAIL 2 STATE COM #702H
30-015-47123	QUAIL 2 STATE COM #720H
30-015-47120	QUAIL 2 STATE COM #721H
30-015-46279	QUAIL 2 STATE COM #705H
30-015-46275	QUAIL 2 STATE COM #706H
30-015-46274	QUAIL 2 STATE COM #722H
30-015-46276	QUAIL 2 STATE COM #724H
30-015-46277	QUAIL 2 STATE COM #725H
30-015-46278	QUAIL 2 STATE COM #768H
30-015-45787	QUAIL 2 STATE COM #581H
30-015-75788	QUAIL 2 STATE #594H
30-015-45793	QUAIL 2 STATE COM #707H

1400 EVERMAN PARKWAY, Ste. 146 • FT. WORTH, TEXAS 76140  
TELEPHONE: (817) 744-7512 • FAX (817) 744-7548  
TEXAS FIRM REGISTRATION NO. 10042504  
WWW.TOPOGRAPHIC.COM



DATE: 3/8/2021

DRAWN BY: J.T.S.

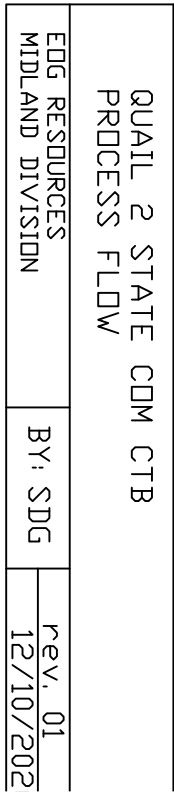
CHECKED BY: J.T.S.

SITE NAME:  
QUAIL 2 STATE COM

Location:  
Section 2, T26S-R30E, Eddy County, NM







Released to Imaging: 3/18/2021 9:12:49 AM



<b>Production Summary Report</b> <b>API: 30-015-45788</b> <b>QUAIL 2 STATE #594H</b> <b>Printed On: Wednesday, March 10 2021</b>											
		Production					Injection				
Year	Pool	Month	Oil(BBLS)	Gas(MCF)	Water(BBLS)	Days P/I	Water(BBLS)	Co2(MCF)	Gas(MCF)	Other	Pressure
2020	[97814] WILDCAT G-015 S2630010;BONE SPRING	Jul	15833	74745	61530	31	0	0	0	0	0
2020	[97814] WILDCAT G-015 S2630010;BONE SPRING	Aug	15835	73443	53614	31	0	0	0	0	0
2020	[97814] WILDCAT G-015 S2630010;BONE SPRING	Sep	3550	17005	12907	9	0	0	0	0	0
2020	[97814] WILDCAT G-015 S2630010;BONE SPRING	Oct	3893	12652	18213	13	0	0	0	0	0
2020	[97814] WILDCAT G-015 S2630010;BONE SPRING	Nov	7039	24791	36469	30	0	0	0	0	0
2020	[97814] WILDCAT G-015 S2630010;BONE SPRING	Dec	6524	24088	22126	31	0	0	0	0	0

<b>Production Summary Report</b> <b>API: 30-015-45787</b> <b>QUAIL 2 STATE COM #581H</b> <b>Printed On: Wednesday, March 10 2021</b>											
		Production					Injection				
Year	Pool	Month	Oil(BBLS)	Gas(MCF)	Water(BBLS)	Days P/I	Water(BBLS)	Co2(MCF)	Gas(MCF)	Other	Pressure
2020	[97814] WILDCAT G-015 S2630010;BONE SPRING	Jul	8185	33320	21219	31	0	0	0	0	0
2020	[97814] WILDCAT G-015 S2630010;BONE SPRING	Aug	7905	33287	16786	31	0	0	0	0	0
2020	[97814] WILDCAT G-015 S2630010;BONE SPRING	Sep	1704	7721	3480	8	0	0	0	0	0
2020	[97814] WILDCAT G-015 S2630010;BONE SPRING	Oct	5609	19671	10616	17	0	0	0	0	0
2020	[97814] WILDCAT G-015 S2630010;BONE SPRING	Nov	6137	25622	14264	30	0	0	0	0	0
2020	[97814] WILDCAT G-015 S2630010;BONE SPRING	Dec	5114	24841	10496	31	0	0	0	0	0

<b>Production Summary Report</b> <b>API: 30-015-46279</b> <b>QUAIL 2 STATE COM #705H</b> <b>Printed On: Wednesday, March 10 2021</b>											
		Production					Injection				
Year	Pool	Month	Oil(BBLS)	Gas(MCF)	Water(BBLS)	Days P/I	Water(BBLS)	Co2(MCF)	Gas(MCF)	Other	Pressure
2020	[98220] PURPLE SAGE;WOLFCAMP (GAS)	Sep	24108	92067	89649	24	0	0	0	0	0
2020	[98220] PURPLE SAGE;WOLFCAMP (GAS)	Oct	30027	110329	105641	31	0	0	0	0	0
2020	[98220] PURPLE SAGE;WOLFCAMP (GAS)	Nov	17671	63207	72441	30	0	0	0	0	0
2020	[98220] PURPLE SAGE;WOLFCAMP (GAS)	Dec	12673	46650	41701	30	0	0	0	0	0

<b>Production Summary Report</b> <b>API: 30-015-46275</b> <b>QUAIL 2 STATE COM #706H</b> <b>Printed On: Wednesday, March 10 2021</b>											
		Production					Injection				
Year	Pool	Month	Oil(BBLS)	Gas(MCF)	Water(BBLS)	Days P/I	Water(BBLS)	Co2(MCF)	Gas(MCF)	Other	Pressure
2020	[98220] PURPLE SAGE;WOLFCAMP (GAS)	Sep	27816	110439	82536	24	0	0	0	0	0
2020	[98220] PURPLE SAGE;WOLFCAMP (GAS)	Oct	30601	123726	83897	31	0	0	0	0	0
2020	[98220] PURPLE SAGE;WOLFCAMP (GAS)	Nov	15658	67840	59849	30	0	0	0	0	0
2020	[98220] PURPLE SAGE;WOLFCAMP (GAS)	Dec	9107	40796	32620	26	0	0	0	0	0

<b>Production Summary Report</b> <b>API: 30-015-45793</b> <b>QUAIL 2 STATE COM #707H</b> <b>Printed On: Wednesday, March 10 2021</b>											
		Production					Injection				
Year	Pool	Month	Oil(BBLS)	Gas(MCF)	Water(BBLS)	Days P/I	Water(BBLS)	Co2(MCF)	Gas(MCF)	Other	Pressure
2020	[98220] PURPLE SAGE;WOLFCAMP (GAS)	Sep	31631	121496	87598	24	0	0	0	0	0
2020	[98220] PURPLE SAGE;WOLFCAMP (GAS)	Oct	38129	147859	101448	31	0	0	0	0	0
2020	[98220] PURPLE SAGE;WOLFCAMP (GAS)	Nov	21242	85566	74548	30	0	0	0	0	0
2020	[98220] PURPLE SAGE;WOLFCAMP (GAS)	Dec	13892	55797	43899	31	0	0	0	0	0

<b>Production Summary Report</b> <b>API: 30-015-46274</b> <b>QUAIL 2 STATE COM #722H</b> <b>Printed On: Wednesday, March 10 2021</b>											
		Production					Injection				
Year	Pool	Month	Oil(BBLS)	Gas(MCF)	Water(BBLS)	Days P/I	Water(BBLS)	Co2(MCF)	Gas(MCF)	Other	Pressure
2020	[98220] PURPLE SAGE;WOLFCAMP (GAS)	Sep	35269	148305	67268	25	0	0	0	0	0
2020	[98220] PURPLE SAGE;WOLFCAMP (GAS)	Oct	35053	165286	50050	31	0	0	0	0	0
2020	[98220] PURPLE SAGE;WOLFCAMP (GAS)	Nov	18085	88309	15360	30	0	0	0	0	0
2020	[98220] PURPLE SAGE;WOLFCAMP (GAS)	Dec	12618	62365	27220	31	0	0	0	0	0

<b>Production Summary Report</b> <b>API: 30-015-46276</b> <b>QUAIL 2 STATE COM #724H</b> <b>Printed On: Wednesday, March 10 2021</b>											
		Production					Injection				
Year	Pool	Month	Oil(BBLS)	Gas(MCF)	Water(BBLS)	Days P/I	Water(BBLS)	Co2(MCF)	Gas(MCF)	Other	Pressure
2020	[98220] PURPLE SAGE;WOLFCAMP (GAS)	Sep	31130	145013	76751	24	0	0	0	0	0
2020	[98220] PURPLE SAGE;WOLFCAMP (GAS)	Oct	31363	165694	72106	31	0	0	0	0	0
2020	[98220] PURPLE SAGE;WOLFCAMP (GAS)	Nov	15904	88923	34121	30	0	0	0	0	0
2020	[98220] PURPLE SAGE;WOLFCAMP (GAS)	Dec	11291	61393	24430	31	0	0	0	0	0

<b>Production Summary Report</b> <b>API: 30-015-46277</b> <b>QUAIL 2 STATE COM #725H</b> <b>Printed On: Wednesday, March 10 2021</b>											
		Production					Injection				
Year	Pool	Month	Oil(BBLS)	Gas(MCF)	Water(BBLS)	Days P/I	Water(BBLS)	Co2(MCF)	Gas(MCF)	Other	Pressure
2020	[98220] PURPLE SAGE;WOLFCAMP (GAS)	Sep	30600	134722	64430	24	0	0	0	0	0
2020	[98220] PURPLE SAGE;WOLFCAMP (GAS)	Oct	28015	136251	47549	31	0	0	0	0	0
2020	[98220] PURPLE SAGE;WOLFCAMP (GAS)	Nov	14374	73231	19475	30	0	0	0	0	0
2020	[98220] PURPLE SAGE;WOLFCAMP (GAS)	Dec	9515	53373	15531	26	0	0	0	0	0

Production Summary Report API: 30-015-46278 QUAIL 2 STATE COM #768H Printed On: Wednesday, March 10 2021											
		Production					Injection				
Year	Pool	Month	Oil(BBLS)	Gas(MCF)	Water(BBLS)	Days P/I	Water(BBLS)	Co2(MCF)	Gas(MCF)	Other	Pressure
2020	[98220] PURPLE SAGE;WOLFCAMP (GAS)	Sep	15903	161399	110387	24	0	0	0	0	0
2020	[98220] PURPLE SAGE;WOLFCAMP (GAS)	Oct	18937	221137	129522	31	0	0	0	0	0
2020	[98220] PURPLE SAGE;WOLFCAMP (GAS)	Nov	11508	144087	61676	30	0	0	0	0	0
2020	[98220] PURPLE SAGE;WOLFCAMP (GAS)	Dec	8257	101250	56314	31	0	0	0	0	0

NOV 08 2019

FORM C-102

District I  
1625 N. French Dr., Hobbs, NM 88240  
Phone: (505) 393-6161 Fax: (505) 393-0720

District II  
811 S. First St., Artesia, NM 88210  
Phone: (505) 748-1283 Fax: (505) 748-9720

District III  
1000 Rio Brazos Road, Aztec, NM 87410  
Phone: (505) 334-6178 Fax: (505) 334-6170

District IV  
1220 S. St. Francis Dr., Santa Fe, NM 87505  
Phone: (505) 476-3460 Fax: (505) 476-3462

State of New Mexico  
Energy, Minerals & Natural Resources  
Department  
OIL CONSERVATION DIVISION  
1220 South St. Francis Dr.  
Santa Fe, NM 87505

Revised August 1, 2011

Submit one copy to appropriate

District Office

☒ AMENDED REPORT

## WELL LOCATION AND ACREAGE DEDICATION PLAT

<sup>1</sup> API Number <b>30-015-45787</b>	<sup>2</sup> Pool Code <b>97814</b>	<sup>3</sup> Pool Name <b>WILDCAT G-015 S2630010; BONE SPRING</b>
<sup>4</sup> Property Code <b>325165</b>	<sup>5</sup> Property Name <b>QUAIL 2 STATE COM</b>	<sup>6</sup> Well Number <b>581H</b>
<sup>7</sup> OGRID No. <b>7377</b>	<sup>8</sup> Operator Name <b>EOG RESOURCES, INC.</b>	<sup>9</sup> Elevation <b>3243'</b>

<sup>10</sup>Surface Location

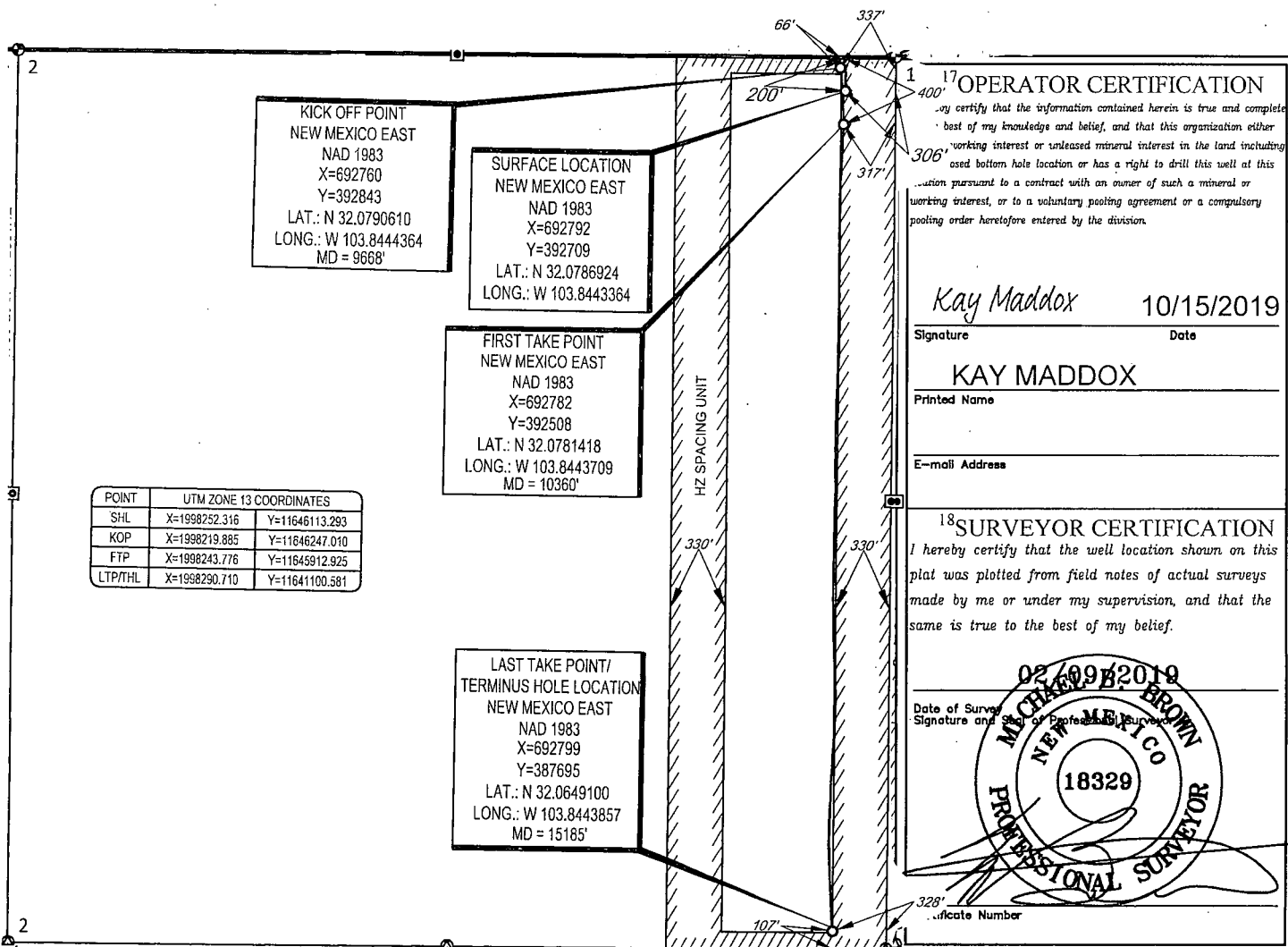
UL or lot no.	Section	Township	Range	Lot Idn	Feet from the	North/South line	Feet from the	East/West line	County
<b>A</b>	<b>2</b>	<b>26-S</b>	<b>30-E</b>	<b>-</b>	<b>200'</b>	<b>NORTH</b>	<b>306'</b>	<b>EAST</b>	<b>EDDY</b>

<sup>11</sup>Bottom Hole Location If Different From Surface

UL or lot no.	Section	Township	Range	Lot Idn	Feet from the	North/South line	Feet from the	East/West line	County
<b>P</b>	<b>2</b>	<b>26-S</b>	<b>30-E</b>	<b>-</b>	<b>107'</b>	<b>SOUTH</b>	<b>328'</b>	<b>EAST</b>	<b>EDDY</b>

<sup>12</sup> Dedicated Acres <b>160.00</b>	<sup>13</sup> Joint or Infill	<sup>14</sup> Consolidation Code	<sup>15</sup> Order No.
--	-------------------------------	----------------------------------	-------------------------

No allowable will be assigned to this completion until all interests have been consolidated or a non-standard unit has been approved by the division.



Intent ☐ As Drilled ☒ XXX

API # 30-015-45787		
Operator Name: EOG RESOURCES, INC	Property Name: QUAIL 2 STATE COM	Well Number 581H

## Kick Off Point (KOP)

UL A	Section 2	Township 26S	Range 30E	Lot	Feet 66	From N/S NORTH	Feet 337	From E/W EAST	County LEA
Latitude 32.0790610					Longitude 103.8444364			NAD 1983	

## First Take Point (FTP)

UL A	Section 2	Township 26S	Range 30E	Lot	Feet 400	From N/S NORTH	Feet 317	From E/W EAST	County LEA
Latitude 32.0781418					Longitude 103.8443709			NAD 1983	

## Last Take Point (LTP)

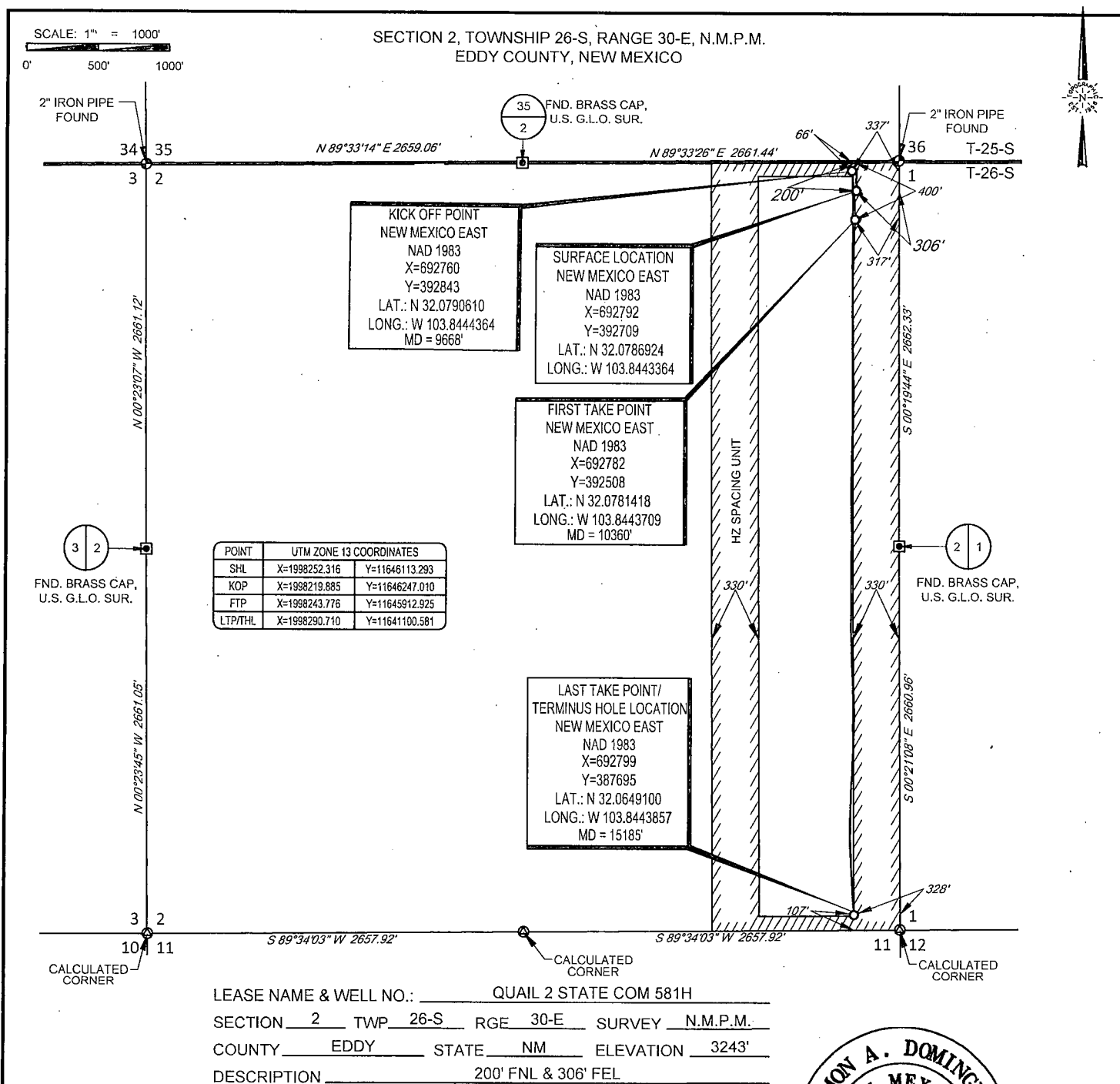
UL P	Section 2	Township 26S	Range 30E	Lot	Feet 107	From N/S SOUTH	Feet 328	From E/W EAST	County LEA
Latitude 32.0649100					Longitude 103.8443857			NAD 1983	

Is this well the defining well for the Horizontal Spacing Unit? ☒ YESIs this well an infill well? ☐ NO

If infill is yes please provide API if available, Operator Name and well number for Defining well for Horizontal Spacing Unit.

API #		
Operator Name: EOG RESOURCES, INC	Property Name:	Well Number

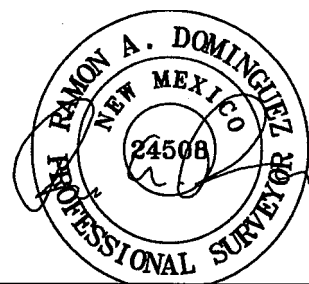
KZ 06/29/2018



**TOPOGRAPHIC**  
LOYALTY INNOVATION LEGACY

1400 EVERMAN PARKWAY, Ste. 146 • FT. WORTH, TEXAS 76140  
TELEPHONE: (817) 744-7512 • FAX (817) 744-7554  
2903 NORTH BIG SPRING • MIDLAND, TEXAS 79705  
TELEPHONE: (432) 682-1853 OR (800) 767-1653 • FAX (432) 682-1743  
WWW.TOPOGRAPHIC.COM

**Geog resources, Inc.**



Ramon A. Dominguez, PS No. 24508  
SEPTEMBER 13, 2019

QUAIL 2 STATE COM 581H AS-COMplete <i>As Drilled</i>	REVISION:		NOTES:
DATE: 09/13/2019			1. ORIGINAL DOCUMENT SIZE: 8.5" X 11" 2. ALL BEARINGS, DISTANCES, AND COORDINATE VALUES CONTAINED HEREIN ARE GRID BASED UPON THE NEW MEXICO COORDINATE SYSTEM, EAST ZONE, U.S. SURVEY FEET, NORTH AMERICAN DATUM 1983. 3. THIS WELL LOCATION SHOWN HEREON HAS BEEN SURVEYED ON THE GROUND UNDER MY SUPERVISION AND PREPARED ACCORDING TO THE EVIDENCE FOUND AT THE TIME OF SURVEY, AND DATA PROVIDED BY EOG RESOURCES, INC. THIS CERTIFICATION IS MADE AND LIMITED TO THOSE PERSONS OR ENTITIES SHOWN ON THE FACE OF THIS PLAT AND IS NON-TRANSFERABLE. THIS SURVEY IS CERTIFIED FOR THIS TRANSACTION ONLY.
FILE: AD_QUAIL_2_STATE_COM_581H			
DRAWN BY: JLS			
SHEET: 1 OF 1			



## **EOG Resources - Midland**

Eddy County, NM (NAD 83 NME)

Quail 2 State Com

#581H

OH

Design: OH

## **Midland PVA**

10 June, 2019





Midland PVA

Company:	Eog Resources - Midland	Local Co-ordinate Reference:	Well #581H
Project:	Eddy County, NM (NAD 83 NME)	TVD Reference:	KB = 25 @ 3268.0usft
Site:	Quail 2 State Com	MD Reference:	KB = 25 @ 3268.0usft
Well:	#581H	North Reference:	Grid
Wellbore:	OH	Survey Calculation Method:	Minimum Curvature
Design:	OH	Database:	EDM 5000.14

Project:	Eddy County, NM (NAD 83 NME)		
Map System:	US State Plane 1983	System Datum:	Mean Sea Level
Geo Datum:	North American Datum 1983		
Map Zone:	New Mexico Eastern Zone		

Site:	Quail 2 State Com		
Site Position:		Northing:	392,709.00 usft
From:	Map	Easting:	692,792.00 usft
Position Uncertainty:	0.0 usft	Slot Radius:	13-3/16 "
		Latitude:	32° 4' 43.295 N
		Longitude:	103° 50' 39.610 W
		Grid Convergence:	0.26 °

Well		#581H				
Well Position	+N-S	0.0 usft	Northing:	392,709.00 usft	Latitude:	32° 4' 43.295 N
	+E-W	0.0 usft	Easting:	692,792.00 usft	Longitude:	103° 50' 39.610 W
Position Uncertainty	0.0 usft	Wellhead Elevation:	usft	Ground Level:	3,243.0 usft	

Wellbore	OH				
Magnetics	Model Name	Sample Date	Declination (°)	Dip Angle (°)	Field Strength (nT)
	IGRF2015	3/5/2019	6.88	59.86	47,648.41244324

Design: OH				
Audit Notes:				
Version:	1.0	Phase:	ACTUAL	Tie On Depth: 0.0
Vertical Section:	Depth From (TVD)	+N-S	+E-W	Direction
	(usft)	(usft)	(usft)	(°)
	0.0	0.0	0.0	179.93

Survey Program	Date	6/10/2019		
From	To	Survey (Wellbore)	Tool Name	Description
(usft)	(usft)			
130.0	15,185.0	Total MWD (OH)	MWD	OWSG MWD - Standard



Midland PVA

Company:	EOG Resources - Midland	Local Co-ordinate Reference:	Well #581H
Project:	Eddy County, NM (NAD 83 NME)	TVD Reference:	KB = 25 @ 3268.0usft
Site:	Quail 2 State Com	MD Reference:	KB = 25 @ 3268.0usft
Well:	#581H	North Reference:	Gnd
Wellbore:	OH	Survey Calculation Method:	Minimum Curvature
Design:	OH	Database:	EDM 5000.14

Survey											
MD (usft)	Inc (°)	Azi (azimuth) (°)	TVD (usft)	N/S (usft)	E/W (usft)	DLeg (°/100usft)	Build (°/100usft)	Turn (°/100usft)	High to Plan (usft)	Right to Plan (usft)	
0.0	0.00	0.00	0.0	0.0	0.0	0.00	0.00	0.00	0.0	0.0	0.0
130.0	0.00	0.00	130.0	0.0	0.0	0.00	0.00	0.00	0.0	0.0	0.0
180.0	0.10	111.30	180.0	0.0	0.0	0.20	0.20	0.00	0.0	0.0	0.0
358.0	0.30	128.30	358.0	-0.4	0.6	0.12	0.11	9.55	-0.7	0.1	0.1
536.0	0.30	121.50	536.0	-0.9	1.3	0.02	0.00	-3.82	-1.6	-0.1	-0.1
631.0	0.10	93.80	631.0	-1.0	1.6	0.23	-0.21	-29.16	-1.7	-0.9	-0.9
787.0	0.70	16.40	787.0	-0.1	2.0	0.44	0.38	-49.62	-0.4	-2.0	-2.0
974.0	1.50	64.60	974.0	2.0	4.5	0.62	0.43	25.78	-5.0	-0.1	-0.1
1,074.0	1.90	76.70	1,073.9	3.0	7.3	0.54	0.40	12.10	-7.8	1.2	1.2
1,254.0	2.70	116.40	1,253.8	1.8	14.0	0.96	0.44	22.06	-11.8	7.8	7.8
1,347.0	2.80	115.90	1,346.7	-0.2	18.1	0.11	0.11	-0.54	-16.3	7.7	7.7
1,440.0	2.20	118.70	1,439.6	-2.0	21.7	0.66	-0.65	3.01	-20.0	8.6	8.6
1,534.0	1.40	124.50	1,533.5	-3.6	24.2	0.87	-0.85	6.17	-22.0	10.8	10.8
1,627.0	0.20	229.20	1,626.5	-4.3	25.0	1.57	-1.29	112.58	16.1	19.6	19.6
1,817.0	0.10	164.60	1,816.5	-4.7	24.8	0.10	-0.05	-34.00	-11.1	22.7	22.7
1,912.0	0.30	186.40	1,911.5	-5.0	24.8	0.22	0.21	22.95	-2.2	25.2	25.2
2,100.0	0.80	162.60	2,099.5	-6.8	25.1	0.29	0.27	-12.66	-14.0	22.0	22.0
2,195.0	1.00	162.90	2,194.5	-8.2	25.6	0.21	0.21	0.32	-15.3	22.0	22.0
2,290.0	1.10	133.80	2,289.5	-9.6	26.5	0.56	0.11	-30.63	-25.8	11.4	11.4
2,384.0	0.90	134.30	2,383.5	-10.7	27.7	0.21	-0.21	0.53	-27.3	11.6	11.6
2,479.0	0.70	116.10	2,478.5	-11.5	28.7	0.34	-0.21	-19.16	-30.8	2.3	2.3
2,573.0	0.80	120.00	2,572.5	-12.1	29.8	0.12	0.11	4.15	-31.9	4.4	4.4
2,667.0	0.80	169.20	2,666.5	-13.1	30.5	0.71	0.00	52.34	-18.6	27.5	27.5
2,762.0	1.00	215.00	2,761.4	-14.4	30.1	0.76	0.21	48.21	5.5	32.9	32.9
2,856.0	0.90	221.20	2,855.4	-15.6	29.2	0.15	-0.11	6.60	7.4	32.3	32.3
2,951.0	0.80	218.90	2,950.4	-16.7	28.3	0.11	-0.11	-2.42	4.7	32.5	32.5
3,046.0	0.40	217.50	3,045.4	-17.5	27.6	0.42	-0.42	-1.47	3.0	32.6	32.6

6/10/2019 3:55:54PM

Page 3

COMPASS 5000.14 Build 85



Midland PVA

Company:	EOG Resources - Midland	Local Co-ordinate Reference:	Well #581H
Project:	Eddy County, NM (NAD 83 NME)	TVD Reference:	KB = 25 @ 3268.0usft
Site:	Quail 2 State Com	MD Reference:	KB = 25 @ 3268.0usft
Well:	#581H	North Reference:	Grid
Wellbore:	OH	Survey Calculation Method:	Minimum Curvature
Design:	OH	Database:	EDM 5000.14

MD (usft)	Inc (°)	Azi (azimuth) (°)	TVD (usft)	N/S (usft)	EW (usft)	DLeg (°/100usft)	Build (°/100usft)	Turn (°/100usft)	High to Plan (usft)	Right to Plan (usft)
3,141.0	0.20	348.10	3,140.4	-17.6	27.4	0.58	-0.21	137.47	22.9	-23.2
3,235.0	0.70	63.50	3,234.4	-17.2	27.9	0.72	0.53	80.21	-17.3	-27.8
3,330.0	1.50	80.60	3,329.4	-16.7	29.6	0.90	0.84	18.00	-26.5	-21.3
3,424.0	1.90	76.40	3,423.3	-16.1	32.4	0.45	0.43	-4.47	-27.7	-23.3
3,519.0	1.90	110.30	3,518.3	-16.3	35.4	1.17	0.00	35.68	-38.8	-3.0
3,613.0	2.60	152.10	3,612.2	-18.8	37.8	1.84	0.74	44.47	-34.3	24.7
3,708.0	2.50	169.70	3,707.1	-22.7	39.2	0.83	-0.11	18.53	-29.3	34.5
3,763.0	1.10	218.20	3,762.1	-24.3	39.1	3.55	-2.55	88.18	5.1	45.7
3,878.0	1.30	238.10	3,877.1	-25.8	37.3	0.40	0.17	17.30	18.0	41.7
3,973.0	2.80	313.60	3,972.0	-24.8	34.7	2.92	1.58	79.47	42.7	-5.6
4,068.0	5.30	330.00	4,068.8	-19.4	30.8	2.87	2.63	17.26	35.9	-15.7
4,162.0	6.80	337.90	4,160.3	-10.5	26.6	1.82	1.60	8.40	29.8	-18.4
4,256.0	7.00	335.30	4,253.6	-0.1	22.1	0.39	0.21	-2.77	27.2	-15.2
4,351.0	7.30	335.90	4,347.9	10.6	17.2	0.33	0.32	0.63	23.2	-13.3
4,446.0	7.10	336.80	4,442.1	21.5	12.4	0.24	-0.21	0.95	19.1	-11.6
4,540.0	7.10	335.80	4,535.4	32.2	7.8	0.13	0.00	-1.06	15.6	-9.3
4,635.0	7.20	334.30	4,629.6	42.9	2.8	0.22	0.11	-1.58	11.9	-6.7
4,730.0	6.60	339.50	4,724.0	53.4	-1.7	0.91	-0.63	5.47	8.0	-5.6
4,825.0	5.50	358.70	4,818.4	63.0	-3.7	2.41	-1.16	20.21	4.2	-7.3
4,919.0	5.10	11.70	4,912.0	71.6	-3.0	1.34	-0.43	13.83	1.5	-10.0
5,014.0	5.10	8.50	5,006.7	79.9	-1.5	0.30	0.00	-3.37	1.5	-12.7
5,109.0	4.70	7.80	5,101.3	88.0	-0.4	0.43	-0.42	-0.74	1.5	-15.2
5,204.0	4.70	4.40	5,196.0	95.7	0.5	0.29	0.00	-3.58	2.6	-17.3
5,298.0	4.80	359.80	5,289.7	103.5	0.7	0.42	0.11	-4.89	4.3	-18.7
5,392.0	4.50	358.10	5,383.4	111.1	0.6	0.35	-0.32	-1.81	5.4	-19.7
5,487.0	4.30	355.00	5,478.1	118.4	0.2	0.33	-0.21	-3.26	7.4	-20.3
5,581.0	3.90	353.50	5,571.8	125.1	-0.5	0.44	-0.43	-1.60	9.4	-20.6

6/10/2019 3:55:54PM

Page 4

COMPASS 5000.14 Build 85



Midland PVA

Company:	EOG Resources - Midland	Local Co-ordinate Reference:	Well #581H
Project:	Eddy County, NM (NAD 83 NME)	TVD Reference:	KB = 25 @ 3268.0usft
Site:	Quail 2 State Com	MD Reference:	KB = 25 @ 3268.0usft
Well:	#581H	North Reference:	Grid
Wellbore:	OH	Survey Calculation Method:	Minimum Curvature
Design:	OH	Database:	EDM 5000.14

MD (usft)	Inc (°)	Azi (azimuth) (°)	TVD (usft)	N/S (usft)	E/W (usft)	DLeg (°/100usft)	Build (°/100usft)	Turn (°/100usft)	High to Plan (usft)	Right to Plan (usft)
5,677.0	3.30	356.90	5,667.7	131.1	-1.0	0.66	-0.62	3.54	10.5	-21.8
5,771.0	2.20	10.30	5,761.5	135.5	-0.8	1.35	-1.17	14.26	6.6	-25.2
5,866.0	1.50	48.50	5,856.5	138.2	0.4	1.45	-0.74	40.21	-11.4	-25.4
5,961.0	1.70	45.40	5,951.5	140.0	2.4	0.23	0.21	-3.26	-12.4	-26.3
6,055.0	1.00	23.80	6,045.4	141.7	3.7	0.91	-0.74	-22.98	-4.0	-29.6
6,150.0	0.90	17.30	6,140.4	143.2	4.2	0.15	-0.11	-6.84	-2.2	-29.9
6,245.0	0.90	19.60	6,235.4	144.6	4.7	0.04	0.00	2.42	-4.9	-29.8
6,339.0	0.70	15.50	6,329.4	145.8	5.1	0.22	-0.21	-4.36	-4.0	-30.1
6,434.0	0.60	27.70	6,424.4	146.8	5.5	0.18	-0.11	12.84	-11.4	-28.5
6,528.0	0.40	13.60	6,518.4	147.6	5.8	0.25	-0.21	-15.00	-4.9	-30.5
6,623.0	0.30	3.20	6,613.4	148.2	5.9	0.12	-0.11	-10.95	0.1	-30.9
6,718.0	0.20	343.10	6,708.4	148.6	5.9	0.14	-0.11	-21.16	10.3	-29.1
6,813.0	0.30	23.80	6,803.4	149.0	5.9	0.21	0.11	42.84	-11.5	-28.7
6,907.0	0.30	10.20	6,897.4	149.4	6.1	0.08	0.00	-14.47	-4.9	-30.7
7,002.0	0.10	133.00	6,992.4	149.6	6.2	0.38	-0.21	129.26	-23.0	21.0
7,096.0	0.20	177.20	7,086.4	149.4	6.2	0.16	0.11	47.02	-2.1	31.2
7,191.0	0.10	168.50	7,181.4	149.1	6.3	0.11	-0.11	-9.16	-7.1	30.5
7,286.0	0.40	195.90	7,276.4	148.7	6.2	0.33	0.32	28.84	7.3	30.3
7,381.0	0.60	208.70	7,371.4	148.0	5.8	0.24	0.21	13.47	13.1	28.0
7,476.0	0.90	214.10	7,466.4	146.9	5.2	0.32	0.32	5.68	14.4	26.7
7,570.0	1.30	211.90	7,560.4	145.4	4.2	0.43	0.43	-2.34	11.5	27.2
7,664.0	1.60	218.80	7,654.3	143.5	2.8	0.37	0.32	7.34	12.4	25.8
7,759.0	1.90	221.00	7,749.3	141.3	1.0	0.32	0.32	2.32	10.4	25.3
7,853.0	1.90	216.10	7,843.2	138.8	-1.0	0.17	0.00	-5.21	5.1	26.0
7,948.0	1.40	222.60	7,938.2	136.7	-2.7	0.56	-0.53	6.84	5.3	25.4
8,042.0	1.20	236.40	8,032.2	135.3	-4.3	0.39	-0.21	14.68	9.1	23.7
8,136.0	1.60	233.60	8,126.1	134.0	-6.2	0.43	0.43	-2.98	5.7	24.1

6/10/2019 3:55:54PM

Page 5

COMPASS 5000.14 Build 85



Midland PVA

Company:	EOG Resources - Midland	Local Co-ordinate Reference:	Well #581H
Project:	Eddy County, NM (NAD 83 NME)	TVD Reference:	KB = 25 @ 3268.0usft
Site:	Quail 2 State Com	MD Reference:	KB = 25 @ 3268.0usft
Well:	#581H	North Reference:	Gnd
Wellbore:	OH	Survey Calculation Method:	Minimum Curvature
Design:	OH	Database:	EDM 5000.14

MD (usft)	Inc (")	Azi (azimuth) (°)	TVD (usft)	N/S (usft)	E/W (usft)	DLeg (°/100usft)	Buile (°/100usft)	Turn (°/100usft)	High to Plan (usft)	Right to Plan (usft)
8,230.0	1.20	253.10	8,220.1	132.9	-8.2	0.66	-0.43	20.74	11.1	21.2
8,325.0	1.50	253.70	8,315.1	132.3	-10.3	0.32	0.32	0.63	9.1	21.1
8,420.0	1.60	265.90	8,410.0	131.8	-12.8	0.36	0.11	12.84	10.8	19.0
8,514.0	1.80	276.20	8,504.0	131.9	-15.6	0.39	0.21	10.96	11.3	17.0
8,608.0	1.90	262.50	8,598.0	131.9	-18.6	0.48	0.11	-14.57	4.0	18.8
8,703.0	1.40	318.50	8,692.9	132.5	-20.9	1.70	-0.53	58.95	15.8	8.5
8,797.0	1.50	321.30	8,786.9	134.4	-22.5	0.13	0.11	2.98	13.8	7.8
8,892.0	1.70	319.70	8,881.9	136.4	-24.2	0.22	0.21	-1.68	10.9	8.2
8,986.0	2.00	313.60	8,975.8	138.6	-26.3	0.38	0.32	-6.49	7.0	9.1
9,081.0	1.90	328.40	9,070.8	141.1	-28.3	0.54	-0.11	15.58	5.9	7.5
9,175.0	0.80	319.10	9,164.7	142.9	-29.5	1.19	-1.17	-9.89	2.4	8.1
9,269.0	0.50	246.00	9,258.7	143.2	-30.3	0.86	-0.32	-77.77	-7.6	4.0
9,364.0	1.00	200.40	9,353.7	142.3	-31.0	0.78	0.53	-48.00	-9.3	-2.9
9,458.0	1.50	198.50	9,447.7	140.4	-31.7	0.53	0.53	-2.02	-11.3	-3.3
9,546.0	1.20	183.30	9,535.7	138.3	-32.1	0.53	-0.34	-17.27	-12.0	-6.4
9,683.0	3.20	169.20	9,672.6	133.2	-31.5	1.50	1.46	-10.29	-15.3	-9.5
9,730.0	8.60	171.90	9,719.3	128.4	-30.7	11.50	11.49	5.74	-18.0	-8.3
9,778.0	11.20	172.00	9,766.6	120.2	-29.6	5.42	5.42	0.21	-19.6	-7.4
9,872.0	17.70	174.10	9,857.6	96.9	-26.8	6.94	6.91	2.23	-18.4	-3.8
9,966.0	24.80	173.90	9,945.1	63.1	-23.3	7.55	7.55	-0.21	-12.3	0.2
10,061.0	34.50	173.00	10,027.6	16.4	-17.8	10.22	10.21	-0.95	-4.1	6.0
10,156.0	43.60	177.00	10,101.3	-43.1	-12.8	9.94	9.58	4.21	4.8	11.2
10,251.0	47.70	179.50	10,167.7	-111.0	-10.8	4.71	4.32	2.63	18.2	12.8
10,344.0	59.00	179.10	10,223.1	-185.5	-9.9	12.16	12.15	-0.43	33.1	13.3
10,391.0	68.40	180.00	10,243.9	-227.6	-9.6	20.07	20.00	1.91	37.6	13.1
10,439.0	78.30	181.60	10,257.6	-273.5	-10.2	20.87	20.62	3.33	37.9	11.9
10,533.0	89.70	182.30	10,267.4	-366.8	-13.4	12.15	12.13	0.74	31.7	8.4

6/10/2019 3:55:54PM

Page 6

COMPASS 5000.14 Build 85



Midland PVA

Company:	EOG Resources - Midland	Local Co-ordinate Reference:				Well #581H
Project:	Eddy County, NM (NAD 83 NME)	TVD Reference:				KB = 25 @ 3268.0usft
Site:	Quail 2 State Com	MD Reference:				KB = 25 @ 3268.0usft
Well:	#581H	North Reference:				Grid
Wellbore:	OH	Survey Calculation Method:				Minimum Curvature
Design:	OH	Database:				EDM 5000.14

Survey										
MD (usft)	Inc (°)	Azi (azimuth) (°)	TVD (usft)	N/S (usft)	E/W (usft)	DLeg (°/100usft)	Build (°/100usft)	Turn (°/100usft)	High to Plan (usft)	Right to Plan (usft)
10,628.0	92.10	181.80	10,266.0	-461.7	-16.8	2.58	2.53	-0.53	27.8	4.5
10,722.0	91.80	181.90	10,262.8	-555.6	-19.8	0.34	-0.32	0.11	25.1	0.9
10,817.0	92.90	180.20	10,258.9	-650.5	-21.6	2.13	1.16	-1.79	22.0	-1.4
10,911.0	92.40	179.40	10,254.5	-744.4	-21.3	1.00	-0.53	-0.85	18.5	-1.6
11,006.0	91.80	179.40	10,251.0	-839.3	-20.3	0.63	-0.63	0.00	15.8	-1.2
11,101.0	90.50	179.30	10,249.1	-934.3	-19.2	1.37	-1.37	-0.11	14.7	-0.7
11,195.0	90.50	179.40	10,248.3	-1,028.3	-18.1	0.11	0.00	0.11	14.7	-0.2
11,289.0	89.80	178.80	10,248.1	-1,122.3	-16.6	0.98	-0.74	-0.64	15.2	0.7
11,384.0	90.50	179.60	10,247.8	-1,217.2	-15.3	1.12	0.74	0.84	15.8	1.5
11,479.0	90.10	179.60	10,247.3	-1,312.2	-14.6	0.42	-0.42	0.00	16.1	1.6
11,574.0	89.40	179.10	10,247.7	-1,407.2	-13.6	0.91	-0.74	-0.53	17.3	2.1
11,669.0	89.20	180.20	10,248.9	-1,502.2	-13.0	1.18	-0.21	1.16	19.3	2.1
11,763.0	92.00	181.40	10,247.9	-1,596.2	-14.3	3.24	2.98	1.28	19.1	0.2
11,858.0	91.10	181.50	10,245.3	-1,691.1	-16.7	0.95	-0.95	0.11	17.3	-2.8
11,953.0	90.10	181.10	10,244.3	-1,786.1	-18.9	1.13	-1.05	-0.42	16.8	-5.5
12,047.0	91.90	181.00	10,242.7	-1,880.1	-20.6	1.92	1.91	-0.11	15.5	-7.8
12,142.0	91.40	180.60	10,240.0	-1,975.0	-21.9	0.67	-0.53	-0.42	13.2	-9.7
12,236.0	90.90	179.90	10,238.1	-2,069.0	-22.3	0.92	-0.53	-0.74	11.7	-10.6
12,331.0	90.20	179.70	10,237.2	-2,164.0	-22.0	0.77	-0.74	-0.21	11.2	-10.9
12,426.0	89.40	179.30	10,237.5	-2,259.0	-21.2	0.94	-0.84	-0.42	11.9	-10.6
12,521.0	88.20	178.70	10,239.5	-2,353.9	-19.5	1.41	-1.26	-0.63	14.3	-9.5
12,615.0	89.30	180.50	10,241.5	-2,447.9	-18.8	2.24	1.17	1.91	16.8	-9.4
12,709.0	91.90	180.90	10,240.6	-2,541.9	-20.0	2.80	2.77	0.43	16.2	-11.1
12,804.0	91.70	180.60	10,237.6	-2,636.8	-21.2	0.38	-0.21	-0.32	13.6	-13.0
12,899.0	89.80	179.20	10,236.3	-2,731.8	-21.1	2.48	-2.00	-1.47	12.7	-13.4
12,993.0	92.30	180.20	10,234.6	-2,825.8	-20.6	2.86	2.66	1.06	11.4	-13.4
13,087.0	91.60	180.60	10,231.4	-2,919.7	-21.2	0.86	-0.74	0.43	8.6	-14.7

6/10/2019 3:55:54PM

Page 7

COMPASS 5000.14 Build 85



Midland PVA

Company:	EOG Resources - Midland			Local Co-ordinate Reference:				Well #581H		
Project:	Eddy County NM (NAD 83 NME)			TVD Reference:				KB = 25 @ 3268.0usft		
Site:	Quail 2 State Cam			MD Reference:				KB = 25 @ 3268.0usft		
Well:	#581H			North Reference:				Gnd		
Wellbore:	OH			Survey Calculation Method:				Minimum Curvature		
Design:	OH			Database:				EDM 5000.14		

Survey											
MD (usft)	Inc (°)	Azi (azimuth) (°)	TVD (usft)	N/S (usft)	EW (usft)	DLeg (°/100usft)	Build (°/100usft)	Turn (°/100usft)	High to Plan (usft)	Right to Plan (usft)	
13,182.0	92.80	179.10	10,227.8	-3,014.7	-21.0	2.02	1.26	-1.58	5.4	-15.0	
13,277.0	92.10	179.00	10,223.7	-3,109.6	-19.4	0.74	-0.74	-0.11	1.7	-14.0	
13,372.0	90.90	177.70	10,221.2	-3,204.5	-16.7	1.86	-1.26	-1.37	-0.4	-11.8	
13,466.0	90.10	177.30	10,220.4	-3,298.4	-12.6	0.95	-0.85	-0.43	-0.8	-8.3	
13,560.0	89.10	176.90	10,221.0	-3,392.3	-7.8	1.15	-1.06	-0.43	0.3	-4.1	
13,655.0	88.00	176.30	10,223.5	-3,487.1	-2.2	1.32	-1.16	-0.63	3.1	1.0	
13,749.0	88.80	179.30	10,226.1	-3,581.0	1.4	3.30	0.85	3.19	6.1	4.0	
13,843.0	90.20	180.70	10,226.9	-3,674.9	1.4	2.11	1.49	1.49	7.3	3.5	
13,938.0	91.10	181.90	10,225.8	-3,769.9	-0.7	1.58	0.95	1.26	6.6	0.7	
14,032.0	89.70	182.00	10,225.2	-3,863.9	-3.9	1.49	-1.49	0.11	6.4	-3.0	
14,127.0	92.60	182.20	10,223.3	-3,958.8	-7.4	3.06	3.05	0.21	4.9	-7.1	
14,221.0	92.00	182.60	10,219.5	-4,052.6	-11.3	0.77	-0.64	0.43	1.5	-11.6	
14,316.0	91.20	182.20	10,216.8	-4,147.5	-15.3	0.94	-0.84	-0.42	-0.7	-16.1	
14,411.0	90.10	182.20	10,215.8	-4,242.4	-19.0	1.16	-1.16	0.00	-1.3	-20.3	
14,506.0	89.70	181.40	10,215.9	-4,337.4	-22.0	0.94	-0.42	-0.84	-0.6	-23.9	
14,600.0	92.10	180.60	10,214.4	-4,431.3	-23.6	2.69	2.55	-0.85	-1.6	-26.1	
14,695.0	93.00	176.10	10,210.2	-4,526.2	-20.9	4.83	0.95	-4.74	-5.4	-23.9	
14,789.0	90.70	177.10	10,207.2	-4,619.9	-15.3	2.67	-2.45	1.06	-7.9	-18.9	
14,884.0	89.80	177.30	10,206.8	-4,714.8	-10.7	0.97	-0.95	0.21	-7.8	-14.9	
14,978.0	89.00	176.90	10,207.8	-4,808.7	-5.9	0.95	-0.85	-0.43	-6.3	-10.7	
15,073.0	88.00	176.10	10,210.2	-4,903.5	-0.1	1.35	-1.05	-0.84	-3.3	-5.4	
15,132.0	87.40	176.10	10,212.6	-4,962.3	3.9	1.02	-1.02	0.00	-0.7	-1.8	
15,185.0	87.00	176.10	10,215.2	-5,015.1	7.5	0.75	-0.75	0.00	2.2	1.5	





Midland PVA

Company:	EOG Resources - Midland	Local Co-ordinate Reference:	Well #581H
Project:	Eddy County, NM (NAD 83 NME)	TVD Reference:	KB = 25 @ 3268.0usft
Site:	Quail 2 State Corn	MD Reference:	KB = 25 @ 3268.0usft
Well:	#581H	North Reference:	Grid
Wellbore:	OH	Survey Calculation Method:	Minimum Curvature
Design:	OH	Database:	EDM 5000.14

Design Annotations				
Measured Depth (usft)	Vertical Depth (usft)	Local Coordinates		Comment
		+N-S (usft)	+E-W (usft)	
9,668.0	9,657.6	133.9	-31.6	KOP, MD:9668.0', TVD:9657.6', N/S:133.9', E/W:-31.6', INC:2.98
9,861.6	9,847.6	100.0	-27.1	FTP Crossing, MD:9861.6', TVD:9847.6', N/S:100.0', E/W:-27.1', INC:16.98
15,132.0	10,212.6	-4,962.3	3.9	Last MWD Survey (MD=15132.0')
15,185.0	10,215.2	-5,015.1	7.5	Projection to Bit (MD=15185.0')

Checked By: \_\_\_\_\_ Approved By: \_\_\_\_\_ Date: \_\_\_\_\_

I certify this survey to be true and correct to the best of my belief and knowledge.

Kay Maddox 11/07/2019  
Signed Date



Eddy County, NM (NAD 83 NME)

Quail 2 State Com #581H

Plan #1

PROJECT DETAILS: Eddy County, NM (NAD 83 NME)

Geodetic System: US State Plane 1983  
Datum: North American Datum 1983  
Ellipsoid: GRS 1980  
Zone: New Mexico Eastern Zone  
System Datum: Mean Sea Level

WELL DETAILS: #581H

KB = 25 @ 3268.0usft 3243.0  
Northing 392709.00 Easting 692792.00 Latitude 32° 4' 43.295 N Longitude 103° 50' 39.610 W



Azimuths to Grid North  
True North: -0.26°  
Magnetic North: 6.62°

Magnetic Field  
Strength: 47648.4snT  
Dip Angle: 59.86°  
Date: 3/5/2019  
Model: IGRF2015

To convert a Magnetic Direction to a Grid Direction, Add 6.62°  
To convert a Magnetic Direction to a True Direction, Add 6.88° East  
To convert a True Direction to a Grid Direction, Subtract 6.25°

## SECTION DETAILS

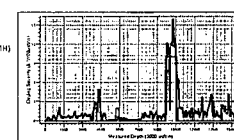
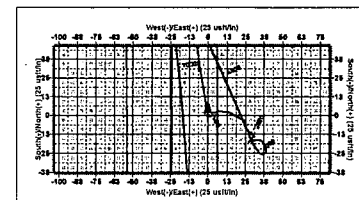
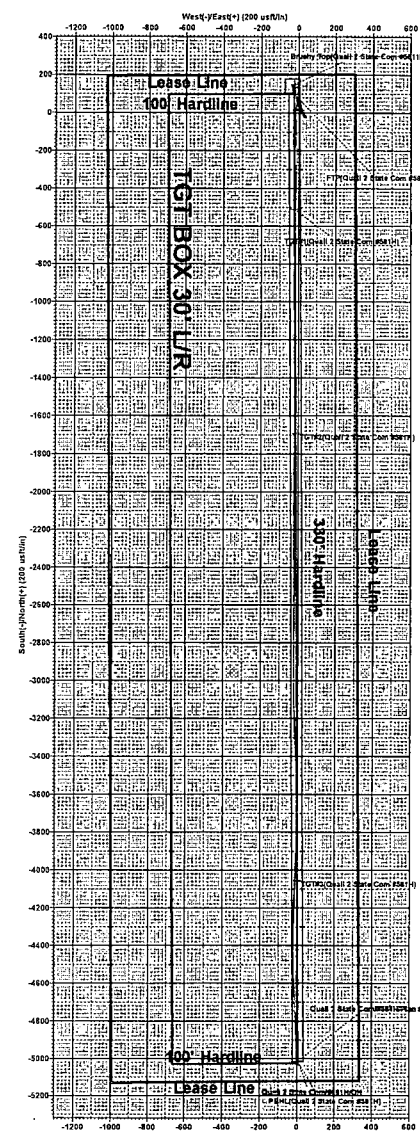
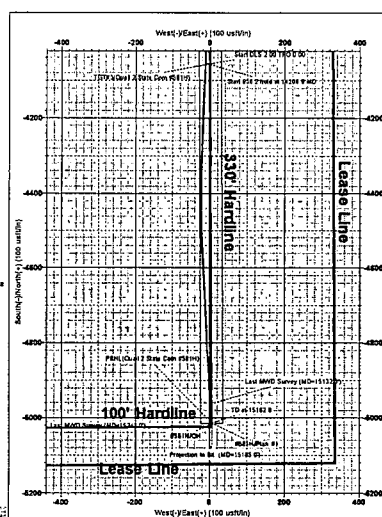
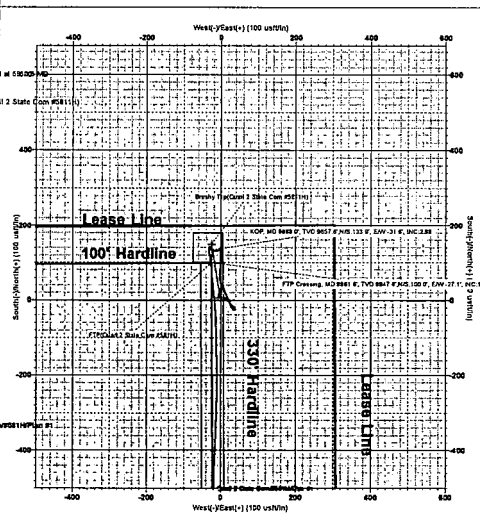
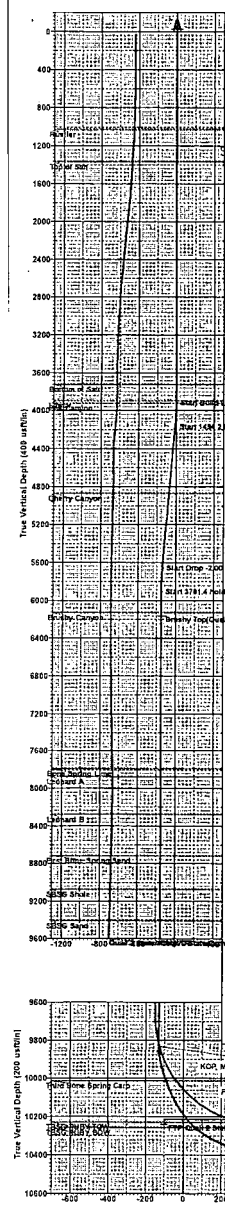
MD	Inc	Azi	TVD	+N/-S	+E/-W	Dleg	TFace	VSect	Target
0.0	0.00	0.00	0.0	0.0	0.0	0.00	0.00	0.0	
3916.0	0.00	0.00	3916.0	0.0	0.0	0.00	0.00	0.0	
4166.1	5.00	350.54	4165.7	10.8	-1.8	2.00	350.54	-10.8	
5660.3	5.00	350.54	5654.3	139.2	-23.2	0.00	0.00	-139.3	
5910.3	0.00	0.00	5904.0	150.0	-25.0	2.00	180.00	-150.0	
9671.7	0.00	0.00	9665.4	150.0	-25.0	0.00	0.00	-150.0	
10574.2	90.24	179.66	10238.4	-425.4	-21.5	10.00	179.66	425.4	TGT#1(Quail 2 State Com #581H)
10656.8	90.24	179.66	10238.0	-508.0	-21.0	0.00	0.00	508.0	TGT#2(Quail 2 State Com #581H)
10668.8	90.49	179.66	10237.9	-520.0	-21.0	2.00	0.00	520.0	TGT#3(Quail 2 State Com #581H)
11840.8	90.49	179.66	10228.0	-1692.0	-13.9	0.00	0.00	1692.0	PBHL(Quail 2 State Com #581H)
11853.0	90.24	179.66	10227.9	-1704.2	-13.9	2.00	-180.00	1704.1	
14203.9	90.24	179.66	10218.0	-4055.0	0.2	0.00	0.00	4055.0	
14206.8	90.30	179.66	10218.0	-4057.8	0.3	2.00	0.00	4057.8	
15162.9	90.30	179.66	10213.0	-5014.0	6.0	0.00	0.00	5014.0	

## CASING DETAILS

No casing data is available

## WELLBORE TARGET DETAILS (MAP CO-ORDINATES)

Name	TVD	+N/-S	+E/-W	Northing	Easting
TGT#1(Quail 2 State Com #581H)	10238.0	-508.0	-21.0	392201.00	692770.55
TGT#2(Quail 2 State Com #581H)	10228.0	-1692.0	-13.9	391017.00	692778.06
TGT#3(Quail 2 State Com #581H)	10218.0	-4055.0	0.2	389654.00	692782.34
PBHL(Quail 2 State Com #581H)	10213.0	-5014.0	6.0	387835.00	692798.00
Brushy Top(Quail 2 State Com #581H)	6162.0	150.0	-25.0	392859.00	692767.00
FTP(Quail 2 State Com #581H)	10240.0	100.0	-25.0	392809.00	692767.00



RECEIVED

District I  
1625 N. French Dr., Hobbs, NM 88240  
Phone: (575) 393-6161 Fax: (575) 393-0720  
District II  
811 S. First St., Artesia, NM 88210  
Phone: (575) 748-1283 Fax: (575) 748-9720  
District III  
1000 Rio Brazos Road, Aztec, NM 87410  
Phone: (505) 334-6178 Fax: (505) 334-6170  
District IV  
1220 S. St. Francis Dr., Santa Fe, NM 87505  
Phone: (505) 476-3460 Fax: (505) 476-3462

State of New Mexico  
Energy, Minerals & Natural Resources  
Department  
OIL CONSERVATION DIVISION  
1220 South St. Francis Dr.  
Santa Fe, NM 87505

NOV 08 2019

FORM C-102

Revised August 1, 2011

Submit one copy to appropriate

District Office

☒ AMENDED REPORTAs-Completed &  
As-drilled PLAT

## WELL LOCATION AND ACREAGE DEDICATION PLAT

<sup>1</sup> API Number 30-015-45788	<sup>2</sup> Pool Code 97814	<sup>3</sup> Pool Name WILDCAT G-015 S2630010; BONE SPRING
<sup>4</sup> Property Code 325170	<sup>5</sup> Property Name QUAIL 2 STATE	<sup>6</sup> Well Number 594H
<sup>7</sup> OGRID No. 7377	<sup>8</sup> Operator Name EOG RESOURCES, INC.	<sup>9</sup> Elevation 3215'

<sup>10</sup>Surface Location

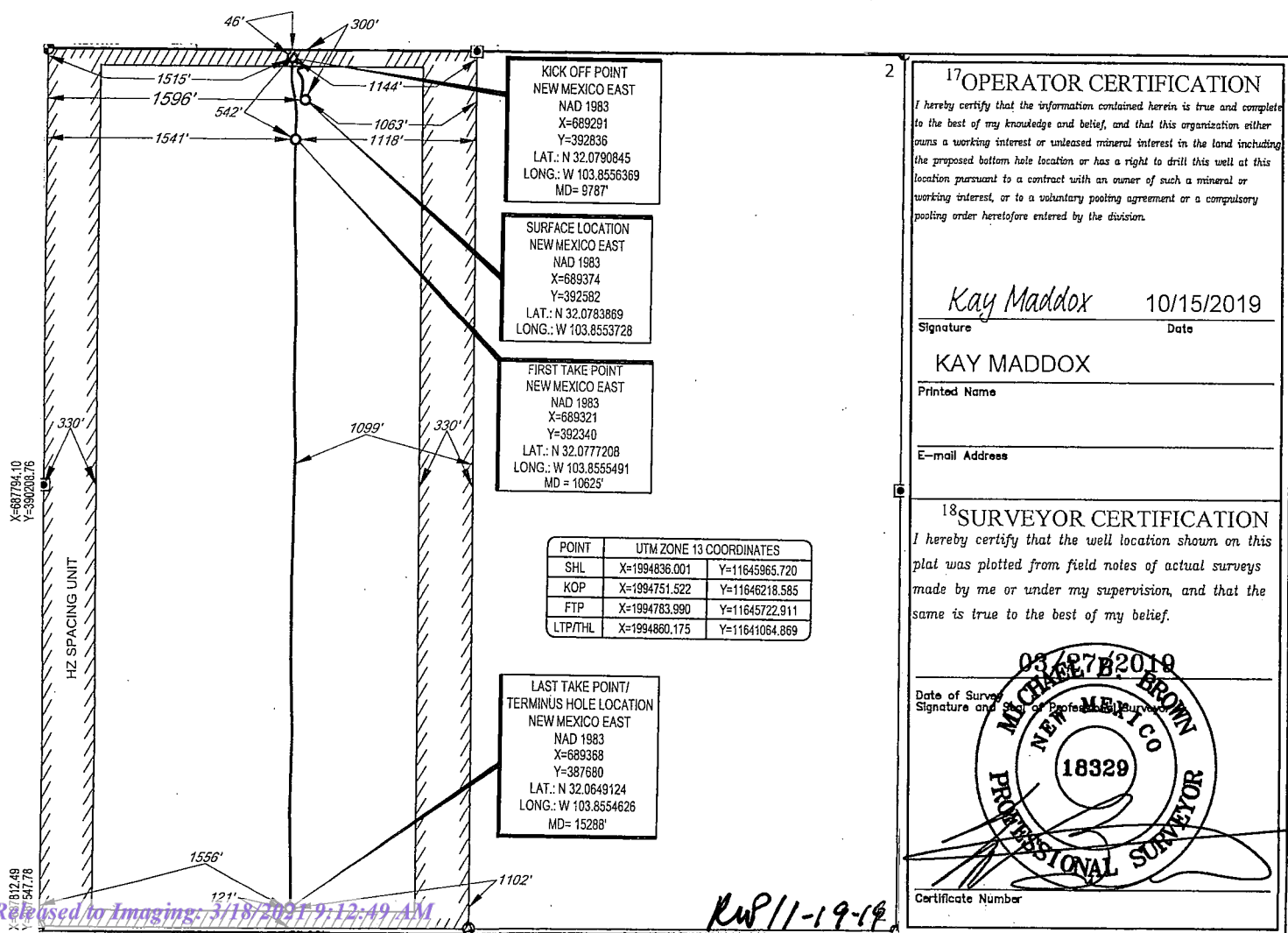
UL or lot no.	Section	Township	Range	Lot Idn	Feet from the	North/South line	Feet from the	East/West line	County
C	2	26-S	30-E	-	300'	NORTH	1596'	WEST	EDDY

<sup>11</sup>Bottom Hole Location If Different From Surface

UL or lot no.	Section	Township	Range	Lot Idn	Feet from the	North/South line	Feet from the	East/West line	County
N	2	26-S	30-E	-	121'	SOUTH	1556'	WEST	EDDY

<sup>12</sup> Dedicated Acres 320.00	<sup>13</sup> Joint or Infill	<sup>14</sup> Consolidation Code	<sup>15</sup> Order No.
---	-------------------------------	----------------------------------	-------------------------

No allowable will be assigned to this completion until all interests have been consolidated or a non-standard unit has been approved by the division.

<sup>17</sup>OPERATOR CERTIFICATION

I hereby certify that the information contained herein is true and complete to the best of my knowledge and belief, and that this organization either owns a working interest or unleased mineral interest in the land including the proposed bottom hole location or has a right to drill this well at this location pursuant to a contract with an owner of such a mineral or working interest, or to a voluntary pooling agreement or a compulsory pooling order heretofore entered by the division.

Kay Maddox 10/15/2019  
Signature Date

KAY MADDOX

Printed Name

E-mail Address

<sup>18</sup>SURVEYOR CERTIFICATION

I hereby certify that the well location shown on this plat was plotted from field notes of actual surveys made by me or under my supervision, and that the same is true to the best of my belief.

03/27/2019  
Date of Survey  
Signature and Seal of Professional Surveyor  
MICHAEL BROWN  
NEW MEXICO  
18329  
PROFESSIONAL SURVEYOR  
Certificate Number



District I  
1625 N. French Dr., Hobbs, NM 88240  
Phone: (575) 393-6161 Fax: (575) 393-0720  
District II  
811 S. First St., Artesia, NM 88210  
Phone: (575) 748-1283 Fax: (575) 748-9720  
District III  
1000 Rio Brazos Road, Aztec, NM 87410  
Phone: (505) 334-6178 Fax: (505) 334-6170  
District IV  
1220 S. St. Francis Dr., Santa Fe, NM 87505  
Phone: (505) 476-3460 Fax: (505) 476-3462

State of New Mexico  
Energy, Minerals & Natural Resources Conservation  
Department  
ARTESIA DISTRICT  
OIL CONSERVATION DIVISION  
1220 South St. Francis Dr.  
Santa Fe, NM 87505

FORM C-102

Revised August 1, 2011

Submit one copy to appropriate

District Office

MAR 12 2019

☐ AMENDED REPORT

RECEIVED

## WELL LOCATION AND ACREAGE DEDICATION PLAT

<sup>1</sup> API Number 30-025-45793	<sup>2</sup> Pool Code 98423 98420	<sup>3</sup> Pool Name WC-015-G-08-6233102C, Wolfcamp (gas)
<sup>4</sup> Property Code 325165	<sup>5</sup> Property Name QUAIL 2 STATE COM	<sup>6</sup> Well Number 723H
<sup>7</sup> GRID No. 7377	<sup>8</sup> Operator Name EOG RESOURCES, INC.	<sup>9</sup> Elevation 3217'

<sup>10</sup>Surface Location

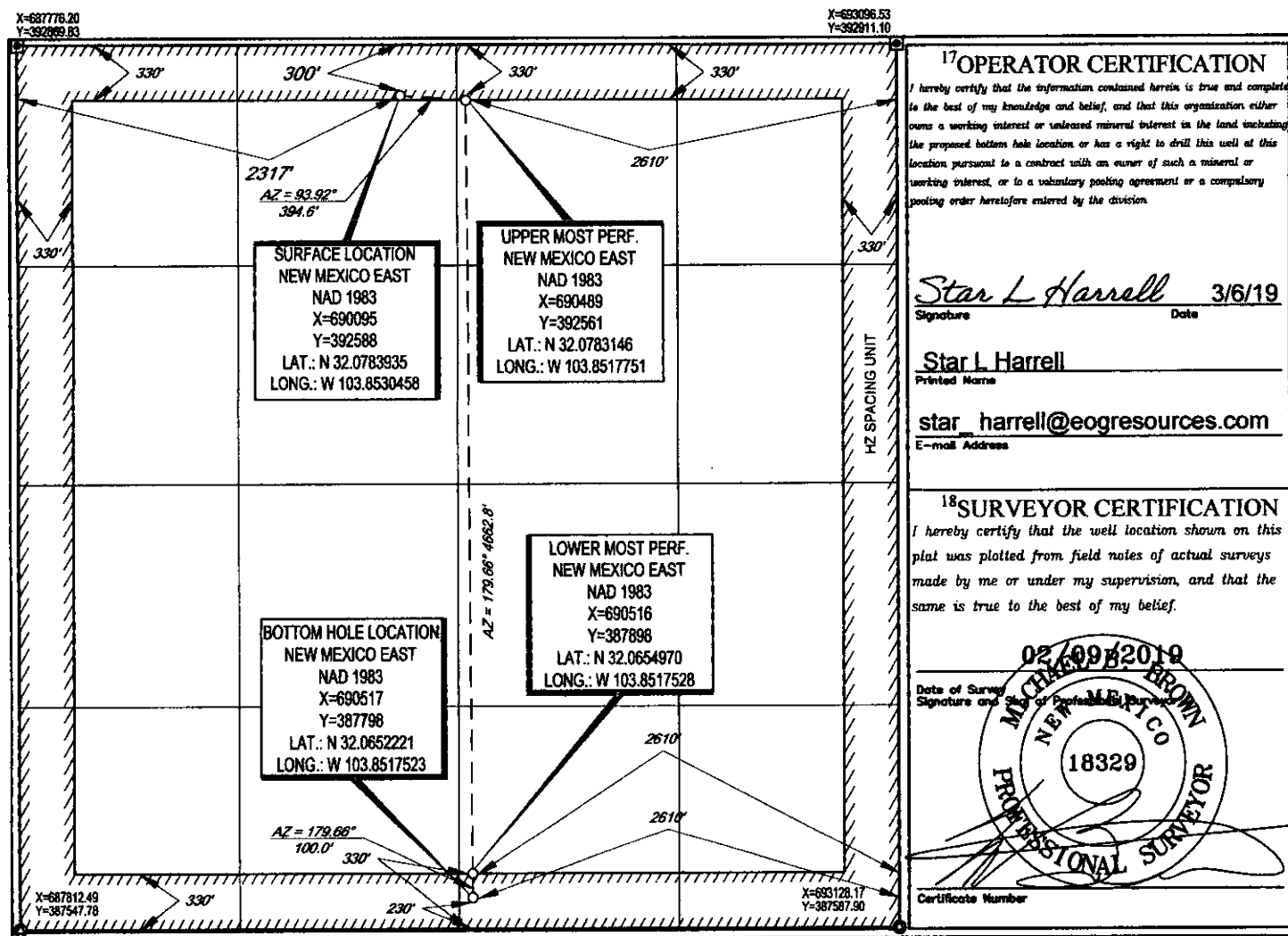
UL or lot no.	Section	Township	Range	Lot Ida	Feet from the	North/South line	Feet from the	East/West line	County
C	2	26-S	30-E	-	300'	NORTH	2317'	WEST	EDDY

<sup>11</sup>Bottom Hole Location If Different From Surface

UL or lot no.	Section	Township	Range	Lot Ida	Feet from the	North/South line	Feet from the	East/West line	County
0	2	26-S	30-E	-	230'	SOUTH	2610'	EAST	EDDY

<sup>12</sup> Dedicated Acres 640.00	<sup>13</sup> Joint or Infill	<sup>14</sup> Consolidation Code	<sup>15</sup> Order No.
---	-------------------------------	----------------------------------	-------------------------

No allowable will be assigned to this completion until all interests have been consolidated or a non-standard unit has been approved by the division.

<sup>17</sup>OPERATOR CERTIFICATION

I hereby certify that the information contained herein is true and complete to the best of my knowledge and belief, and that this organization either owns a working interest or undivided mineral interest in the land including the proposed bottom hole location or has a right to drill this well at this location pursuant to a contract with an owner of such a mineral or working interest, or to a voluntary pooling agreement or a compulsory pooling order heretofore entered by the division.

Star L Harrell 3/6/19  
Signature Date

Star L Harrell  
Printed Name

star\_harrell@eogresources.com  
E-mail Address

<sup>18</sup>SURVEYOR CERTIFICATION

I hereby certify that the well location shown on this plat was plotted from field notes of actual surveys made by me or under my supervision, and that the same is true to the best of my belief.

Date of Survey 02/09/2019  
Signature and Seal of Professional Surveyor

Professional Surveyor  
18329  
Certificate Number

S:\SURVEY\EOG\_MIDLAND\QUAIL 2 STATE COM\FINAL\_PRODUCTS\LO\_QUAIL 2 STATE COM 723H.DWG 3/5/2019 7:57:32 AM kashory

RUP 3-19-19

**District I**  
1625 N. French Dr., Hobbs, NM 88240  
Phone: (575) 393-6161 Fax: (575) 393-0720

**District II**  
811 S. First St., Artesia, NM 88210  
Phone: (575) 748-1283 Fax: (575) 748-9720

**District III**  
1000 Rio Brazos Road, Aztec, NM 87410  
Phone: (505) 334-6178 Fax: (505) 334-6170

**District IV**  
1220 S. St. Francis Dr., Santa Fe, NM 87505  
Phone: (505) 476-3460 Fax: (505) 476-3462

State of New Mexico  
Energy, Minerals & Natural Resources  
Department  
OIL CONSERVATION DIVISION  
1220 South St. Francis Dr.  
Santa Fe, NM 87505

**FORM C-102**

Revised August 1, 2011

**Submit one copy to appropriate**

**District Office**

☐ **AMENDED REPORT**

## WELL LOCATION AND ACREAGE DEDICATION PLAT

<sup>1</sup> API Number 30-015-47121	<sup>2</sup> Pool Code 98220	<sup>3</sup> Pool Name Purple Sage; Wolfcamp (Gas)
<sup>4</sup> Property Code 325165	<sup>5</sup> Property Name QUAIL 2 STATE COM	
<sup>7</sup> OGRID No. 7377	<sup>8</sup> Operator Name EOG RESOURCES, INC.	<sup>6</sup> Well Number 701H  <sup>9</sup> Elevation 3235'

<sup>10</sup>Surface Location

UL or lot no.	Section	Township	Range	Lot Idn	Feet from the	North/South line	Feet from the	East/West line	County
A	2	26-S	30-E	—	312'	NORTH	1064'	EAST	EDDY

<sup>11</sup>Bottom Hole Location If Different From Surface

UL or lot no.	Section	Township	Range	Lot Idn	Feet from the	North/South line	Feet from the	East/West line	County
P	2	26-S	30-E	-	230'	SOUTH	715'	EAST	EDDY

<sup>12</sup> Dedicated Acres <b>640.00</b>	<sup>13</sup> Joint or Infill	<sup>14</sup> Consolidation Code	<sup>15</sup> Order No.
--	-------------------------------	----------------------------------	-------------------------

No allowable will be assigned to this completion until all interests have been consolidated or a non-standard unit has been approved by the division.

X=687776.20  
Y=392869.83

X=690435.18  
Y=392890.53

X=693096.53  
Y=392911.10

**SURFACE LOCATION**  
NEW MEXICO EAST  
NAD 1927  
X=650848  
Y=392534  
LAT.: N 32.0782544  
LONG.: W 103.8463066  
  
NAD 1983  
X=692034  
Y=392591  
LAT.: N 32.0783790  
LONG.: W 103.8467854

**UPPER MOST PERF.**  
NEW MEXICO EAST  
NAD 1927  
X=651198  
Y=392518  
LAT.: N 32.0782068  
LONG.: W 103.8451784  
  
NAD 1983  
X=692383  
Y=392576  
LAT.: N 32.0783314  
LONG.: W 103.8456571

**BOTTOM HOLE LOCATION**  
NEW MEXICO EAST  
NAD 1927  
X=651226  
Y=387755  
LAT.: N 32.0651132  
LONG.: W 103.8451570  
  
NAD 1983  
X=692412  
Y=387812  
LAT.: N 32.0652380  
LONG.: W 103.8456352

**LOWER MOST PERF.**  
NEW MEXICO EAST  
NAD 1927  
X=651225  
Y=387855  
LAT.: N 32.0653881  
LONG.: W 103.8451575  
  
NAD 1983  
X=692411  
Y=387912  
LAT.: N 32.0655129  
LONG.: W 103.8456356

HZ SPACING UNIT  
330'  
330'  
330'

AZ = 92.58°  
349.9'

AZ = 179.66° 4663.2'

AZ = 179.66°  
100.0'

X=68794.10  
Y=390206.76

X=69311.82  
Y=390248.81

X=687812.49  
Y=387547.78

X=693128.17  
Y=387587.90

715'  
715'  
715'

**17 OPERATOR CERTIFICATION**

I hereby certify that the information contained herein is true and complete to the best of my knowledge and belief, and that this organization either owns a working interest or unleased mineral interest in the land including the proposed bottom hole location or has a right to drill this well at this location pursuant to a contract with an owner of such a mineral or working interest, or to a voluntary pooling agreement or a compulsory pooling order heretofore entered by the division.

Star L Harrell 5/28/2020  
Signature Date

Star L Harrell  
Printed Name

star\_harrell@eogresources.com  
E-mail Address

**18 SURVEYOR CERTIFICATION**

I hereby certify that the well location shown on this plat was plotted from field notes of actual surveys made by me or under my supervision, and that the same is true to the best of my belief.

02/24/2020  
Date of Survey

RAMON A. DOMINGUEZ  
Signature and Seal of Professional Surveyor

24508  
Professional Surveyor

Certificate Number

District I  
1625 N. French Dr., Hobbs, NM 88240  
Phone: (575) 393-6161 Fax: (575) 393-0720  
District II  
811 S. First St., Artesia, NM 88210  
Phone: (575) 748-1283 Fax: (575) 748-9720  
District III  
1000 Rio Brazos Road, Aztec, NM 87410  
Phone: (505) 334-6178 Fax: (505) 334-6170  
District IV  
1220 S. St. Francis Dr., Santa Fe, NM 87505  
Phone: (505) 476-3460 Fax: (505) 476-3462

State of New Mexico  
Energy, Minerals & Natural Resources  
Department  
OIL CONSERVATION DIVISION  
1220 South St. Francis Dr.  
Santa Fe, NM 87505

FORM C-102

Revised August 1, 2011

Submit one copy to appropriate

District Office

☐ AMENDED REPORT

## WELL LOCATION AND ACREAGE DEDICATION PLAT

<sup>1</sup> API Number 30-015-47122		<sup>2</sup> Pool Code 98220	<sup>3</sup> Pool Name Purple Sage; Wolfcamp (Gas)
<sup>4</sup> Property Code 325165	<sup>5</sup> Property Name QUAIL 2 STATE COM		<sup>6</sup> Well Number 702H
<sup>7</sup> OGRID No. 7377	<sup>8</sup> Operator Name EOG RESOURCES, INC.		<sup>9</sup> Elevation 3227'

<sup>10</sup>Surface Location

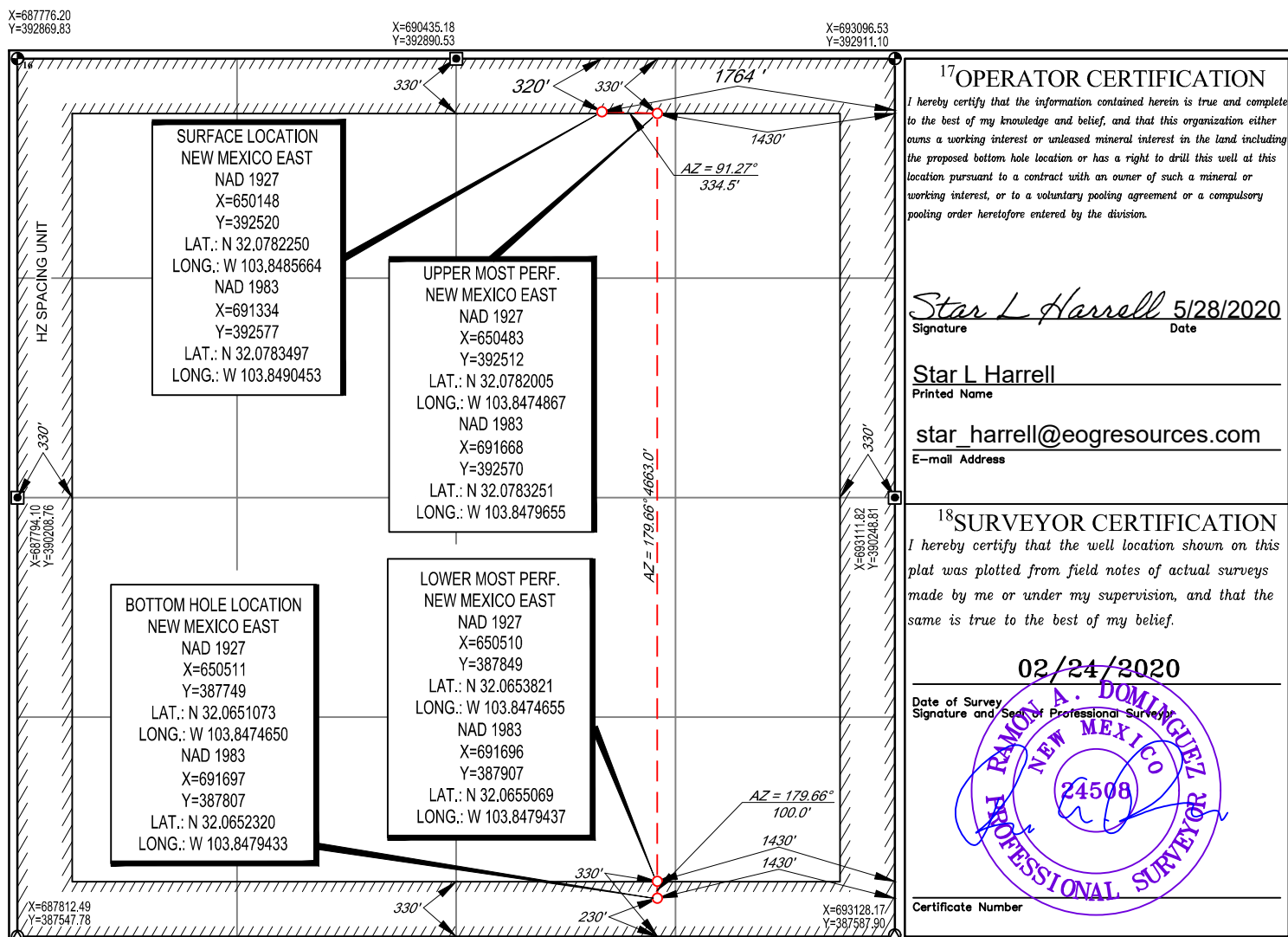
UL or lot no.	Section	Township	Range	Lot Idn	Feet from the	North/South line	Feet from the	East/West line	County
B	2	26-S	30-E	-	320'	NORTH	1764'	EAST	EDDY

<sup>11</sup>Bottom Hole Location If Different From Surface

UL or lot no.	Section	Township	Range	Lot Idn	Feet from the	North/South line	Feet from the	East/West line	County
0	2	26-S	30-E	-	230'	SOUTH	1430'	EAST	EDDY

<sup>12</sup> Dedicated Acres 640.00	<sup>13</sup> Joint or Infill	<sup>14</sup> Consolidation Code	<sup>15</sup> Order No.
---	-------------------------------	----------------------------------	-------------------------

No allowable will be assigned to this completion until all interests have been consolidated or a non-standard unit has been approved by the division.

<sup>17</sup>OPERATOR CERTIFICATION

I hereby certify that the information contained herein is true and complete to the best of my knowledge and belief, and that this organization either owns a working interest or unleased mineral interest in the land including the proposed bottom hole location or has a right to drill this well at this location pursuant to a contract with an owner of such a mineral or working interest, or to a voluntary pooling agreement or a compulsory pooling order heretofore entered by the division.

Star L Harrell 5/28/2020  
Signature Date

Star L Harrell  
Printed Name

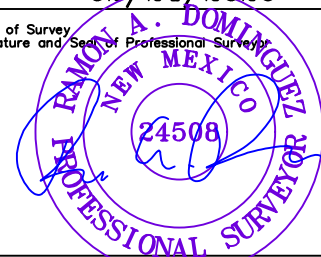
star\_harrell@eogresources.com  
E-mail Address

<sup>18</sup>SURVEYOR CERTIFICATION

I hereby certify that the well location shown on this plat was plotted from field notes of actual surveys made by me or under my supervision, and that the same is true to the best of my belief.

02/24/2020

Date of Survey  
Signature and Seal of Professional Surveyor



Certificate Number

District I  
1625 N. French Dr., Hobbs, NM 88240  
Phone: (575) 393-6161 Fax: (575) 393-0720  
District II  
811 S. First St., Artesia, NM 88210  
Phone: (575) 748-1283 Fax: (575) 748-9720  
District III  
1000 Rio Brazos Road, Aztec, NM 87410  
Phone: (505) 334-6178 Fax: (505) 334-6170  
District IV  
1220 S. St. Francis Dr., Santa Fe, NM 87505  
Phone: (505) 476-3460 Fax: (505) 476-3462

State of New Mexico  
Energy, Minerals & Natural Resources  
Department  
OIL CONSERVATION DIVISION  
1220 South St. Francis Dr.  
Santa Fe, NM 87505

FORM C-102

Revised August 1, 2011

Submit one copy to appropriate

District Office

☐ AMENDED REPORT

## WELL LOCATION AND ACREAGE DEDICATION PLAT

<sup>1</sup> API Number 30-015-47123	<sup>2</sup> Pool Code 98220	<sup>3</sup> Pool Name Purple Sage; Wolfcamp (Gas)
<sup>4</sup> Property Code 325165	<sup>5</sup> Property Name QUAIL 2 STATE COM	<sup>6</sup> Well Number 720H
<sup>7</sup> OGRID No. 7377	<sup>8</sup> Operator Name EOG RESOURCES, INC.	<sup>9</sup> Elevation 3235'

<sup>10</sup>Surface Location

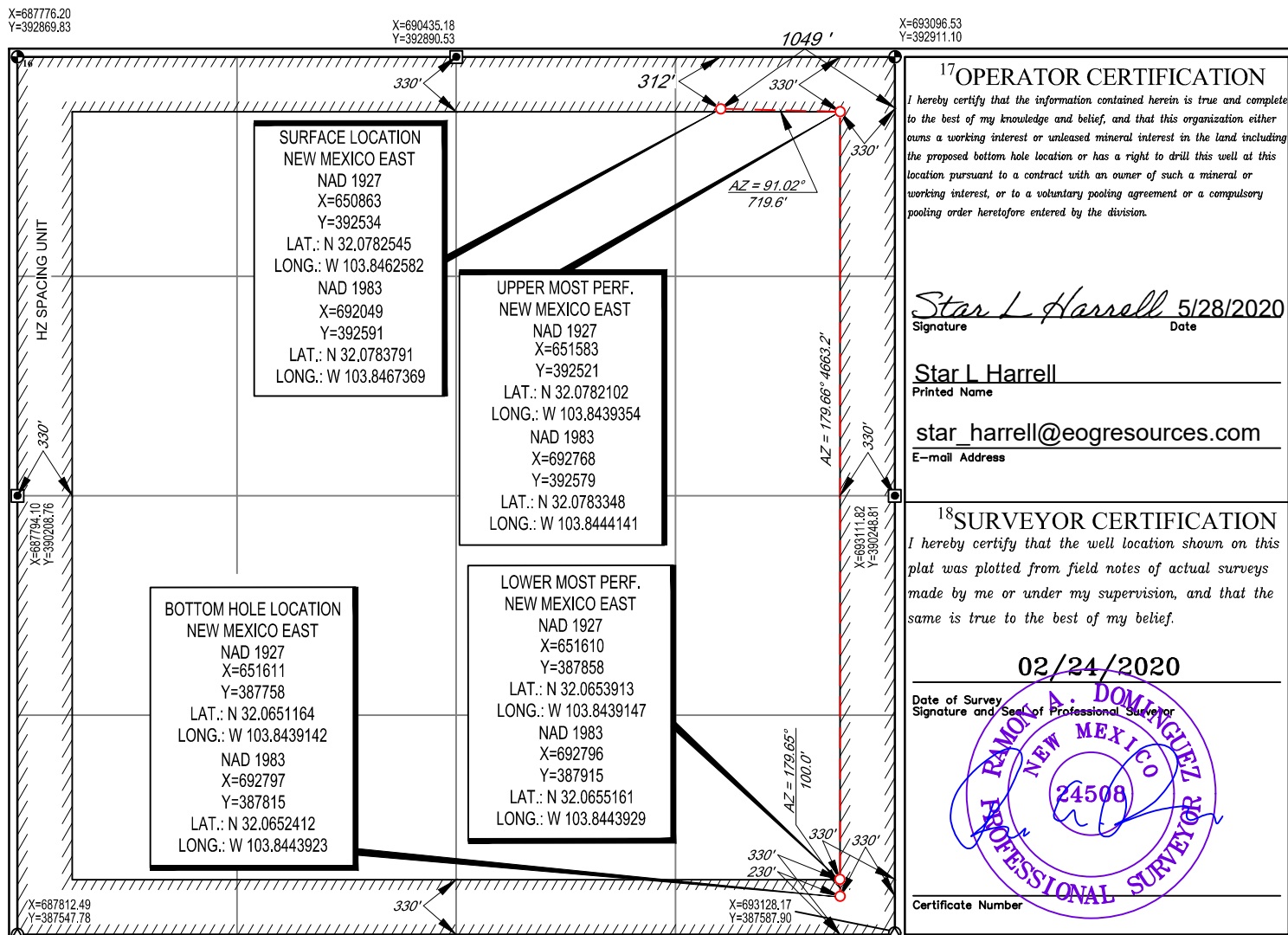
UL or lot no.	Section	Township	Range	Lot Idn	Feet from the	North/South line	Feet from the	East/West line	County
A	2	26-S	30-E	-	312'	NORTH	1049'	EAST	EDDY

<sup>11</sup>Bottom Hole Location If Different From Surface

UL or lot no.	Section	Township	Range	Lot Idn	Feet from the	North/South line	Feet from the	East/West line	County
P	2	26-S	30-E	-	230'	SOUTH	330'	EAST	EDDY

<sup>12</sup> Dedicated Acres 640.00	<sup>13</sup> Joint or Infill	<sup>14</sup> Consolidation Code	<sup>15</sup> Order No.
---	-------------------------------	----------------------------------	-------------------------

No allowable will be assigned to this completion until all interests have been consolidated or a non-standard unit has been approved by the division.





District I  
1625 N. French Dr., Hobbs, NM 88240  
Phone: (575) 393-6161 Fax: (575) 393-0720  
District II  
811 S. First St., Artesia, NM 88210  
Phone: (575) 748-1283 Fax: (575) 748-9720  
District III  
1000 Rio Brazos Road, Aztec, NM 87410  
Phone: (505) 334-6178 Fax: (505) 334-6170  
District IV  
1220 S. St. Francis Dr., Santa Fe, NM 87505  
Phone: (505) 476-3460 Fax: (505) 476-3462

State of New Mexico  
Energy, Minerals & Natural Resources  
Department  
OIL CONSERVATION DIVISION  
1220 South St. Francis Dr.  
Santa Fe, NM 87505

FORM C-102

Revised August 1, 2011

Submit one copy to appropriate

District Office

☐ AMENDED REPORT

## WELL LOCATION AND ACREAGE DEDICATION PLAT

<sup>1</sup> API Number 30-015-47120		<sup>2</sup> Pool Code 98220	<sup>3</sup> Pool Name Purple Sage; Wolfcamp (Gas)
<sup>4</sup> Property Code 325165	<sup>5</sup> Property Name QUAIL 2 STATE COM		<sup>6</sup> Well Number 721H
<sup>7</sup> OGRID No. 7377	<sup>8</sup> Operator Name EOG RESOURCES, INC.		<sup>9</sup> Elevation 3228'

<sup>10</sup>Surface Location

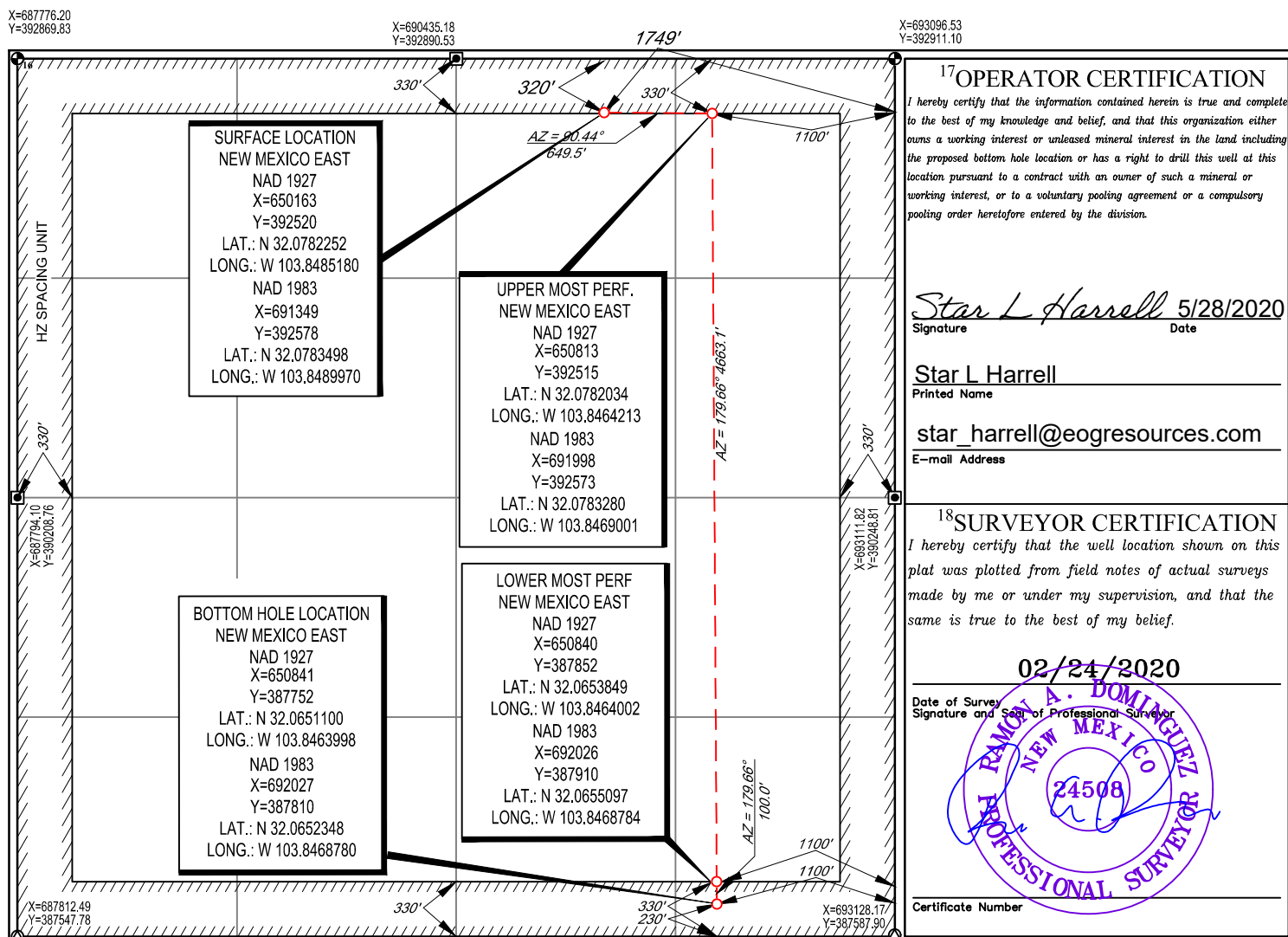
UL or lot no.	Section	Township	Range	Lot Idn	Feet from the	North/South line	Feet from the	East/West line	County
B	2	26-S	30-E	-	320'	NORTH	1749'	EAST	EDDY

<sup>11</sup>Bottom Hole Location If Different From Surface

UL or lot no.	Section	Township	Range	Lot Idn	Feet from the	North/South line	Feet from the	East/West line	County
P	2	26-S	30-E	-	230'	SOUTH	1100'	EAST	EDDY

<sup>12</sup> Dedicated Acres 640.00	<sup>13</sup> Joint or Infill	<sup>14</sup> Consolidation Code	<sup>15</sup> Order No.
---	-------------------------------	----------------------------------	-------------------------

No allowable will be assigned to this completion until all interests have been consolidated or a non-standard unit has been approved by the division.



District I  
1625 N. French Dr., Hobbs, NM 88240  
Phone: (575) 393-6161 Fax: (575) 393-0720  
District II  
811 S. First St., Artesia, NM 88210  
Phone: (575) 748-1283 Fax: (575) 748-9720  
District III  
1000 Rio Brazos Road, Aztec, NM 87410  
Phone: (505) 334-6178 Fax: (505) 334-6170  
District IV  
1220 S. St. Francis Dr., Santa Fe, NM 87505  
Phone: (505) 476-3460 Fax: (505) 476-3462

State of New Mexico  
Energy, Minerals & Natural Resources  
Department  
OIL CONSERVATION DIVISION  
1220 South St. Francis Dr.  
Santa Fe, NM 87505

FORM C-102

Revised August 1, 2011

Submit one copy to appropriate

District Office

☐ AMENDED REPORT

## WELL LOCATION AND ACREAGE DEDICATION PLAT

<sup>1</sup> API Number <b>30-015-</b>		<sup>2</sup> Pool Code <b>98220</b>	<sup>3</sup> Pool Name <b>Purple Sage; Wolfcamp</b>
<sup>4</sup> Property Code	<sup>5</sup> Property Name <b>QUAIL 2 STATE</b>		<sup>6</sup> Well Number <b>705H</b>
<sup>7</sup> OGRID No. <b>7377</b>	<sup>8</sup> Operator Name <b>EOG RESOURCES, INC.</b>		<sup>9</sup> Elevation <b>3207'</b>

<sup>10</sup>Surface Location

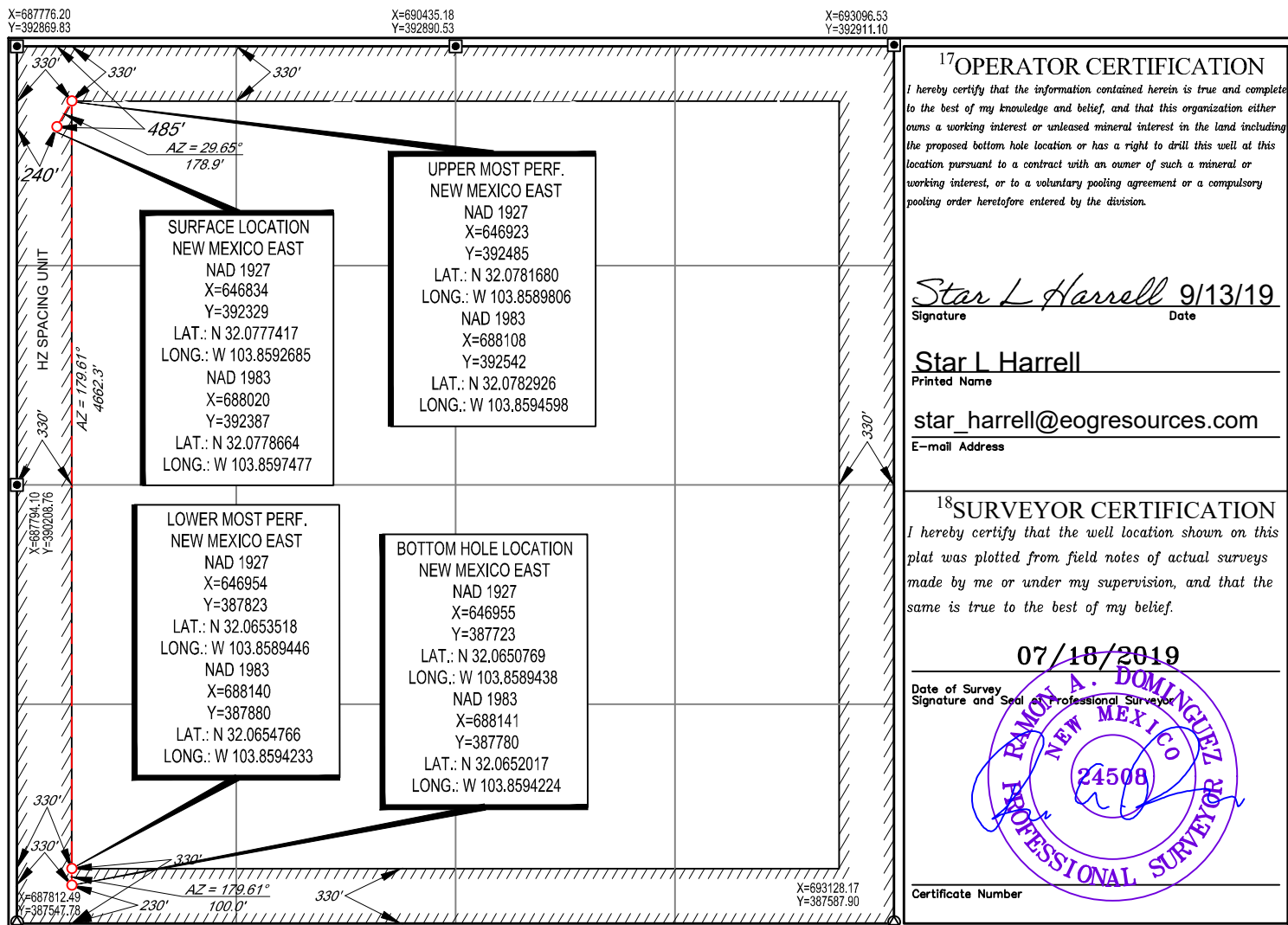
UL or lot no.	Section	Township	Range	Lot Idn	Feet from the	North/South line	Feet from the	East/West line	County
<b>D</b>	<b>2</b>	<b>26-S</b>	<b>30-E</b>	<b>-</b>	<b>485'</b>	<b>NORTH</b>	<b>240'</b>	<b>WEST</b>	<b>EDDY</b>

<sup>11</sup>Bottom Hole Location If Different From Surface

UL or lot no.	Section	Township	Range	Lot Idn	Feet from the	North/South line	Feet from the	East/West line	County
<b>M</b>	<b>2</b>	<b>26-S</b>	<b>30-E</b>	<b>-</b>	<b>230'</b>	<b>SOUTH</b>	<b>330'</b>	<b>WEST</b>	<b>EDDY</b>

<sup>12</sup> Dedicated Acres <b>640.00</b>	<sup>13</sup> Joint or Infill	<sup>14</sup> Consolidation Code	<sup>15</sup> Order No.
--	-------------------------------	----------------------------------	-------------------------

No allowable will be assigned to this completion until all interests have been consolidated or a non-standard unit has been approved by the division.



District I  
1625 N. French Dr., Hobbs, NM 88240  
Phone: (575) 393-6161 Fax: (575) 393-0720  
District II  
811 S. First St., Artesia, NM 88210  
Phone: (575) 748-1283 Fax: (575) 748-9720  
District III  
1000 Rio Brazos Road, Aztec, NM 87410  
Phone: (505) 334-6178 Fax: (505) 334-6170  
District IV  
1220 S. St. Francis Dr., Santa Fe, NM 87505  
Phone: (505) 476-3460 Fax: (505) 476-3462

State of New Mexico  
Energy, Minerals & Natural Resources  
Department  
OIL CONSERVATION DIVISION  
1220 South St. Francis Dr.  
Santa Fe, NM 87505

FORM C-102

Revised August 1, 2011

Submit one copy to appropriate

District Office

☐ AMENDED REPORT

## WELL LOCATION AND ACREAGE DEDICATION PLAT

<sup>1</sup> API Number <b>30-015-</b>	<sup>2</sup> Pool Code <b>98220</b>	<sup>3</sup> Pool Name <b>Purple Sage; Wolfcamp</b>
<sup>4</sup> Property Code	<sup>5</sup> Property Name <b>QUAIL 2 STATE</b>	<sup>6</sup> Well Number <b>706H</b>
<sup>7</sup> OGRID No. <b>7377</b>	<sup>8</sup> Operator Name <b>EOG RESOURCES, INC.</b>	<sup>9</sup> Elevation <b>3213'</b>

<sup>10</sup>Surface Location

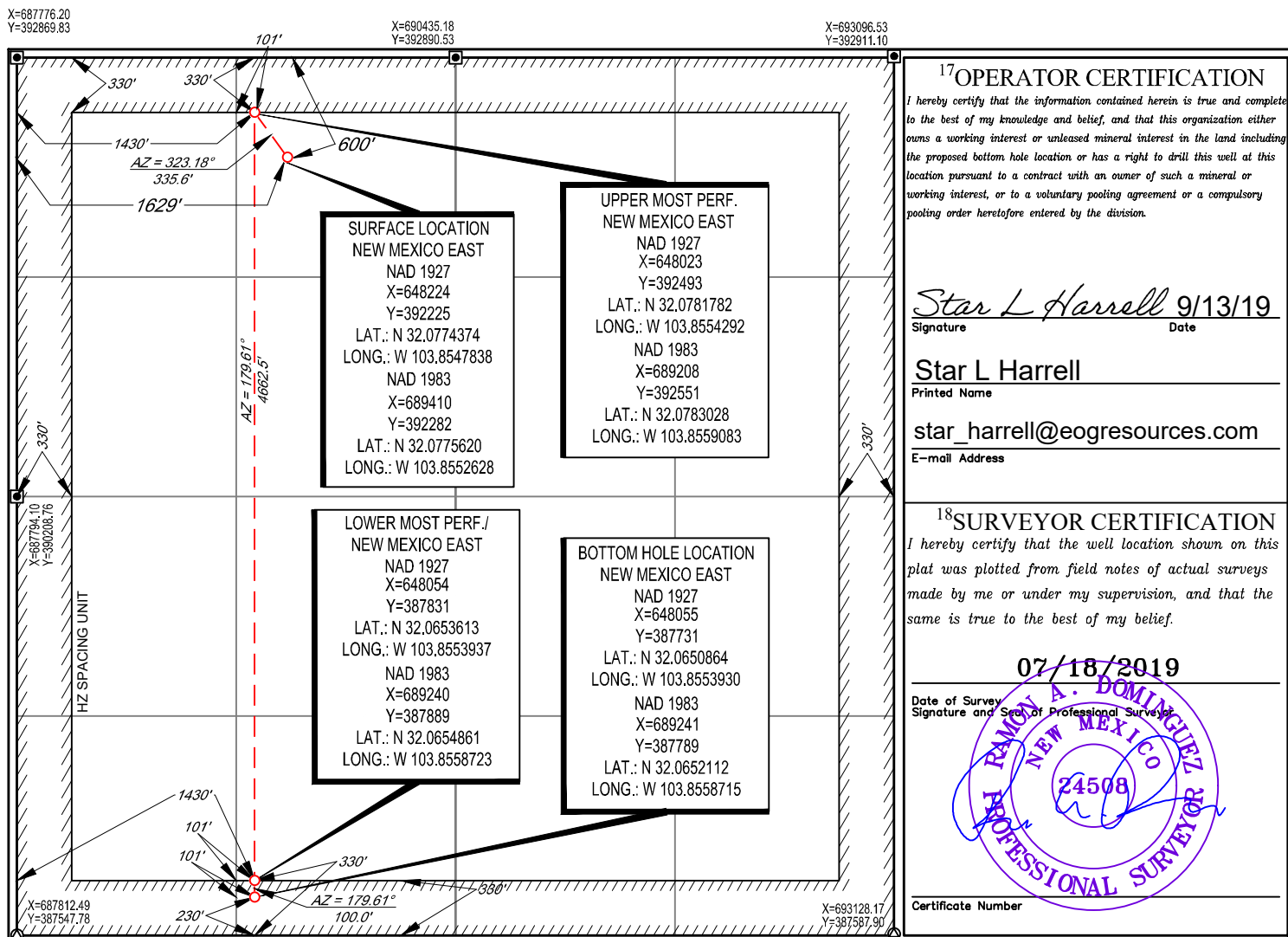
UL or lot no.	Section	Township	Range	Lot Idn	Feet from the	North/South line	Feet from the	East/West line	County
<b>C</b>	<b>2</b>	<b>26-S</b>	<b>30-E</b>	<b>-</b>	<b>600'</b>	<b>NORTH</b>	<b>1629'</b>	<b>WEST</b>	<b>EDDY</b>

<sup>11</sup>Bottom Hole Location If Different From Surface

UL or lot no.	Section	Township	Range	Lot Idn	Feet from the	North/South line	Feet from the	East/West line	County
<b>N</b>	<b>2</b>	<b>26-S</b>	<b>30-E</b>	<b>-</b>	<b>230'</b>	<b>SOUTH</b>	<b>1430'</b>	<b>WEST</b>	<b>EDDY</b>

<sup>12</sup> Dedicated Acres <b>640.00</b>	<sup>13</sup> Joint or Infill	<sup>14</sup> Consolidation Code	<sup>15</sup> Order No.
--	-------------------------------	----------------------------------	-------------------------

No allowable will be assigned to this completion until all interests have been consolidated or a non-standard unit has been approved by the division.

<sup>17</sup>OPERATOR CERTIFICATION

I hereby certify that the information contained herein is true and complete to the best of my knowledge and belief, and that this organization either owns a working interest or unleased mineral interest in the land including the proposed bottom hole location or has a right to drill this well at this location pursuant to a contract with an owner of such a mineral or working interest, or to a voluntary pooling agreement or a compulsory pooling order heretofore entered by the division.

*Star L Harrell* 9/13/19  
Signature Date

Star L Harrell  
Printed Name

star\_harrell@eogresources.com  
E-mail Address

<sup>18</sup>SURVEYOR CERTIFICATION

I hereby certify that the well location shown on this plat was plotted from field notes of actual surveys made by me or under my supervision, and that the same is true to the best of my belief.

07/18/2019

Date of Survey  
Signature and Seal of Professional Surveyor

*RAMON A. DOMINGUEZ*  
NEW MEXICO  
24508  
PROFESSIONAL SURVEYOR

Certificate Number

District I  
1625 N. French Dr., Hobbs, NM 88240  
Phone: (575) 393-6161 Fax: (575) 393-0720  
District II  
811 S. First St., Artesia, NM 88210  
Phone: (575) 748-1283 Fax: (575) 748-9720  
District III  
1000 Rio Brazos Road, Aztec, NM 87410  
Phone: (505) 334-6178 Fax: (505) 334-6170  
District IV  
1220 S. St. Francis Dr., Santa Fe, NM 87505  
Phone: (505) 476-3460 Fax: (505) 476-3462

State of New Mexico  
Energy, Minerals & Natural Resources  
Department  
OIL CONSERVATION DIVISION  
1220 South St. Francis Dr.  
Santa Fe, NM 87505

FORM C-102

Revised August 1, 2011

Submit one copy to appropriate

District Office

☐ AMENDED REPORT

## WELL LOCATION AND ACREAGE DEDICATION PLAT

<sup>1</sup> API Number 30-015-	<sup>2</sup> Pool Code 98220	<sup>3</sup> Pool Name Purple Sage; Wolfcamp
<sup>4</sup> Property Code 325165	<sup>5</sup> Property Name QUAIL 2 STATE COM	<sup>6</sup> Well Number 722H
<sup>7</sup> OGRID No. 7377	<sup>8</sup> Operator Name EOG RESOURCES, INC.	<sup>9</sup> Elevation 3211'

<sup>10</sup>Surface Location

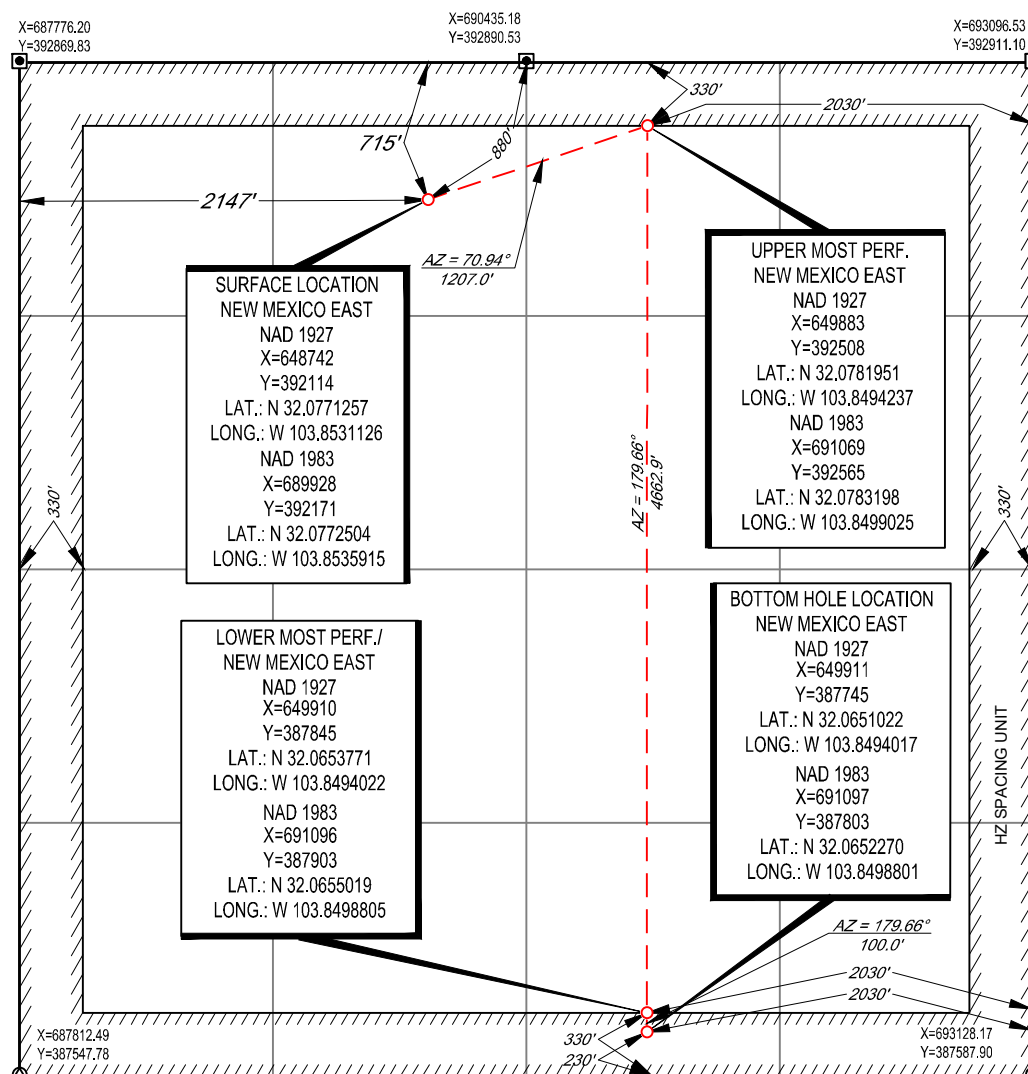
UL or lot no.	Section	Township	Range	Lot Idn	Feet from the	North/South line	Feet from the	East/West line	County
C	2	26-S	30-E	-	715'	NORTH	2147'	WEST	EDDY

<sup>11</sup>Bottom Hole Location If Different From Surface

UL or lot no.	Section	Township	Range	Lot Idn	Feet from the	North/South line	Feet from the	East/West line	County
0	2	26-S	30-E	-	230'	SOUTH	2030'	EAST	EDDY

<sup>12</sup> Dedicated Acres 640.00	<sup>13</sup> Joint or Infill	<sup>14</sup> Consolidation Code	<sup>15</sup> Order No.
---	-------------------------------	----------------------------------	-------------------------

No allowable will be assigned to this completion until all interests have been consolidated or a non-standard unit has been approved by the division.

<sup>17</sup>OPERATOR CERTIFICATION

I hereby certify that the information contained herein is true and complete to the best of my knowledge and belief, and that this organization either owns a working interest or unleased mineral interest in the land including the proposed bottom hole location or has a right to drill this well at this location pursuant to a contract with an owner of such a mineral or working interest, or to a voluntary pooling agreement or a compulsory pooling order heretofore entered by the division.

Star L Harrell 9/13/19  
Signature Date

Star L Harrell  
Printed Name

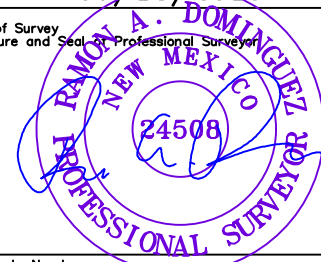
star\_harrell@eogresources.com  
E-mail Address

<sup>18</sup>SURVEYOR CERTIFICATION

I hereby certify that the well location shown on this plat was plotted from field notes of actual surveys made by me or under my supervision, and that the same is true to the best of my belief.

07/18/2019

Date of Survey  
Signature and Seal of Professional Surveyor



Certificate Number



District I  
1625 N. French Dr., Hobbs, NM 88240  
Phone: (575) 393-6161 Fax: (575) 393-0720  
District II  
811 S. First St., Artesia, NM 88210  
Phone: (575) 748-1283 Fax: (575) 748-9720  
District III  
1000 Rio Brazos Road, Aztec, NM 87410  
Phone: (505) 334-6178 Fax: (505) 334-6170  
District IV  
1220 S. St. Francis Dr., Santa Fe, NM 87505  
Phone: (505) 476-3460 Fax: (505) 476-3462

State of New Mexico  
Energy, Minerals & Natural Resources  
Department  
OIL CONSERVATION DIVISION  
1220 South St. Francis Dr.  
Santa Fe, NM 87505

FORM C-102

Revised August 1, 2011

Submit one copy to appropriate

District Office

☐ AMENDED REPORT

## WELL LOCATION AND ACREAGE DEDICATION PLAT

<sup>1</sup> API Number <b>30-015-</b>	<sup>2</sup> Pool Code <b>98220</b>	<sup>3</sup> Pool Name <b>Purple Sage; Wolfcamp</b>
<sup>4</sup> Property Code	<sup>5</sup> Property Name <b>QUAIL 2 STATE</b>	<sup>6</sup> Well Number <b>724H</b>
<sup>7</sup> OGRID No. <b>7377</b>	<sup>8</sup> Operator Name <b>EOG RESOURCES, INC.</b>	<sup>9</sup> Elevation <b>3211'</b>

<sup>10</sup>Surface Location

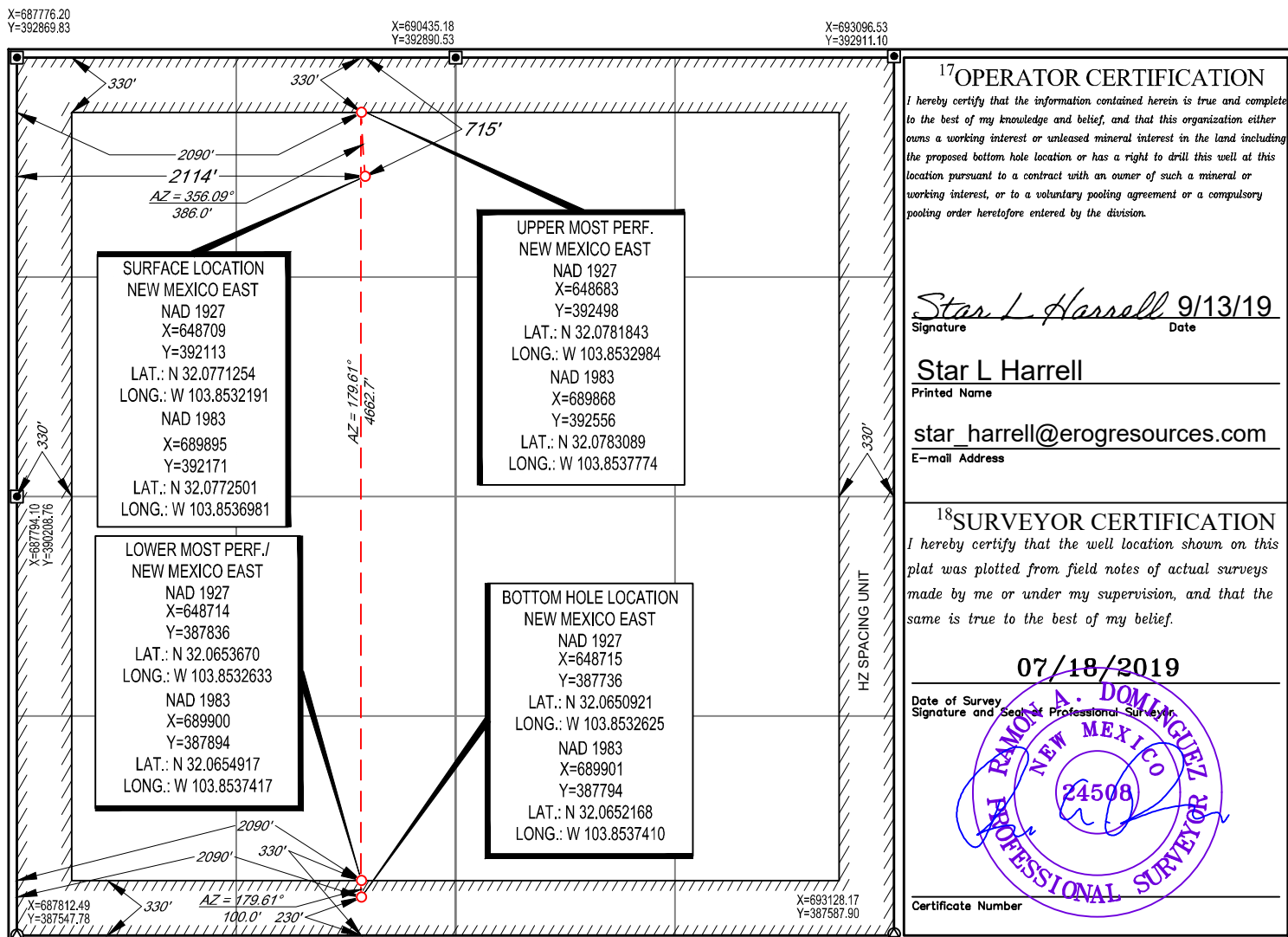
UL or lot no.	Section	Township	Range	Lot Idn	Feet from the	North/South line	Feet from the	East/West line	County
<b>C</b>	<b>2</b>	<b>26-S</b>	<b>30-E</b>	<b>-</b>	<b>715'</b>	<b>NORTH</b>	<b>2114'</b>	<b>WEST</b>	<b>EDDY</b>

<sup>11</sup>Bottom Hole Location If Different From Surface

UL or lot no.	Section	Township	Range	Lot Idn	Feet from the	North/South line	Feet from the	East/West line	County
<b>N</b>	<b>2</b>	<b>26-S</b>	<b>30-E</b>	<b>-</b>	<b>230'</b>	<b>SOUTH</b>	<b>2090'</b>	<b>WEST</b>	<b>EDDY</b>

<sup>12</sup> Dedicated Acres <b>640.00</b>	<sup>13</sup> Joint or Infill	<sup>14</sup> Consolidation Code	<sup>15</sup> Order No.
--	-------------------------------	----------------------------------	-------------------------

No allowable will be assigned to this completion until all interests have been consolidated or a non-standard unit has been approved by the division.



**District I**  
1625 N. French Dr., Hobbs, NM 88240  
Phone: (575) 393-6161 Fax: (575) 393-0720

**District II**  
811 S. First St., Artesia, NM 88210  
Phone: (575) 748-1283 Fax: (575) 748-9720

**District III**  
1000 Rio Brazos Road, Aztec, NM 87410  
Phone: (505) 334-6178 Fax: (505) 334-6170

**District IV**  
1220 S. St. Francis Dr., Santa Fe, NM 87505  
Phone: (505) 476-3460 Fax: (505) 476-3462

State of New Mexico  
Energy, Minerals & Natural Resources  
Department  
OIL CONSERVATION DIVISION  
1220 South St. Francis Dr.  
Santa Fe, NM 87505

**FORM C-102**

Revised August 1, 2011

**Submit one copy to appropriate**

**District Office**

☐ **AMENDED REPORT**

# WELL LOCATION AND ACREAGE DEDICATION PLAT

<sup>1</sup> API Number 30-015-	<sup>2</sup> Pool Code 98220	<sup>3</sup> Pool Name Purple Sage; Wolfcamp
<sup>4</sup> Property Code	<sup>5</sup> Property Name QUAIL 2 STATE	
<sup>6</sup> Well Number 725H		
<sup>7</sup> OGRID No. 7377	<sup>8</sup> Operator Name EOG RESOURCES, INC.	<sup>9</sup> Elevation 3207'

## <sup>10</sup>Surface Location

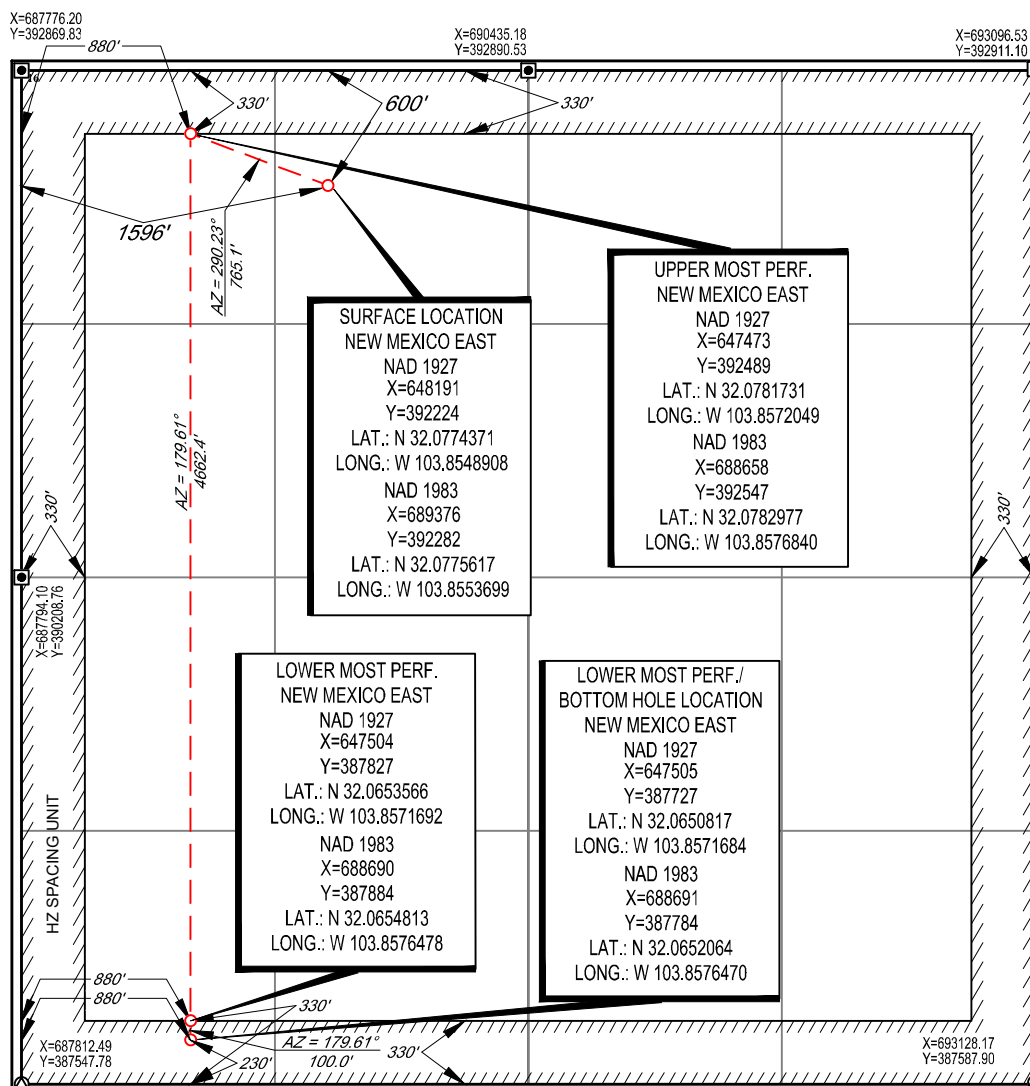
UL or lot no.	Section	Township	Range	Lot Idn	Feet from the	North/South line	Feet from the	East/West line	County
D	2	26-S	30-E	—	600'	NORTH	1596'	WEST	EDDY

<sup>11</sup>Bottom Hole Location If Different From Surface

UL or lot no.	Section	Township	Range	Lot Idn	Feet from the	North/South line	Feet from the	East/West line	County
<b>M</b>	<b>2</b>	<b>26-S</b>	<b>30-E</b>	<b>-</b>	<b>230'</b>	<b>SOUTH</b>	<b>880'</b>	<b>WEST</b>	<b>EDDY</b>

<sup>12</sup> Dedicated Acres <b>640.00</b>	<sup>13</sup> Joint or Infill	<sup>14</sup> Consolidation Code	<sup>15</sup> Order No.
--	-------------------------------	----------------------------------	-------------------------

No allowable will be assigned to this completion until all interests have been consolidated or a non-standard unit has been approved by the division.



---

<sup>17</sup>OPERATOR CERTIFICATION

I hereby certify that the information contained herein is true and complete to the best of my knowledge and belief, and that this organization either owns a working interest or unleased mineral interest in the land including the proposed bottom hole location or has a right to drill this well at this location pursuant to a contract with an owner of such a mineral or working interest, or to a voluntary pooling agreement or a compulsory pooling order heretofore entered by the division.

Star L Harrell 9/13/19  
Signature Date

Star L Harrell  
Printed Name

star\_harrell@eogresources.com

## 18 SURVEYOR CERTIFICATION

I hereby certify that the well location shown on this plat was plotted from field notes of actual surveys made by me or under my supervision, and that the same is true to the best of my belief.

07/18/2019

Date of Survey \_\_\_\_\_  
Signature and Seal of Professional Surveyor \_\_\_\_\_

Certificate Number

District I  
1625 N. French Dr., Hobbs, NM 88240  
Phone: (575) 393-6161 Fax: (575) 393-0720  
District II  
811 S. First St., Artesia, NM 88210  
Phone: (575) 748-1283 Fax: (575) 748-9720  
District III  
1000 Rio Brazos Road, Aztec, NM 87410  
Phone: (505) 334-6178 Fax: (505) 334-6170  
District IV  
1220 S. St. Francis Dr., Santa Fe, NM 87505  
Phone: (505) 476-3460 Fax: (505) 476-3462

State of New Mexico  
Energy, Minerals & Natural Resources  
Department  
OIL CONSERVATION DIVISION  
1220 South St. Francis Dr.  
Santa Fe, NM 87505

FORM C-102

Revised August 1, 2011

Submit one copy to appropriate

District Office

☐ AMENDED REPORT

## WELL LOCATION AND ACREAGE DEDICATION PLAT

<sup>1</sup> API Number <b>30-015-</b>	<sup>2</sup> Pool Code <b>98220</b>	<sup>3</sup> Pool Name <b>Purple Sage; Wolfcamp</b>
<sup>4</sup> Property Code	<sup>5</sup> Property Name <b>QUAIL 2 STATE</b>	<sup>6</sup> Well Number <b>768H</b>
<sup>7</sup> OGRID No. <b>7377</b>	<sup>8</sup> Operator Name <b>EOG RESOURCES, INC.</b>	<sup>9</sup> Elevation <b>3207'</b>

<sup>10</sup>Surface Location

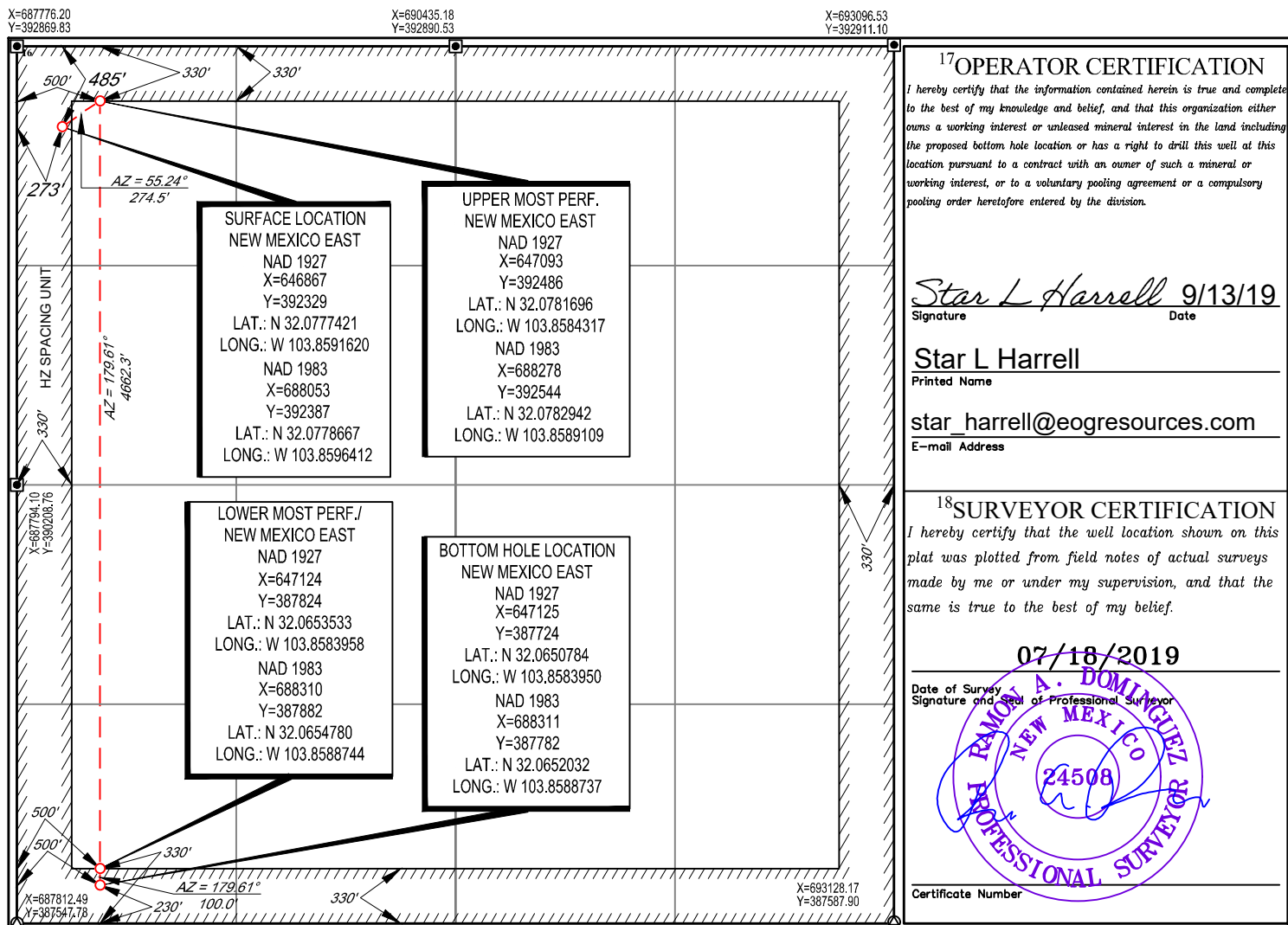
UL or lot no.	Section	Township	Range	Lot Idn	Feet from the	North/South line	Feet from the	East/West line	County
<b>D</b>	<b>2</b>	<b>26-S</b>	<b>30-E</b>	<b>-</b>	<b>485'</b>	<b>NORTH</b>	<b>273'</b>	<b>WEST</b>	<b>EDDY</b>

<sup>11</sup>Bottom Hole Location If Different From Surface

UL or lot no.	Section	Township	Range	Lot Idn	Feet from the	North/South line	Feet from the	East/West line	County
<b>M</b>	<b>2</b>	<b>26-S</b>	<b>30-E</b>	<b>-</b>	<b>230'</b>	<b>SOUTH</b>	<b>500'</b>	<b>WEST</b>	<b>EDDY</b>

<sup>12</sup> Dedicated Acres <b>640.00</b>	<sup>13</sup> Joint or Infill	<sup>14</sup> Consolidation Code	<sup>15</sup> Order No.
--	-------------------------------	----------------------------------	-------------------------

No allowable will be assigned to this completion until all interests have been consolidated or a non-standard unit has been approved by the division.





# communitization agreement

[Download](#)
[Printer Friendly](#)
[Instructions](#)
[Post a comment!](#)

Communitization Name:

## QUAIL 2 STATE COM #581H

Current Operator:

Original Operator: EOG RESOURCES INC [\[ Operator Details \]](#)

PUN: 1378814

Communitization Status Code: Approved

Comm Beneficiary Institution:

OCD Order Number 0

Approval Date: 06-14-2019

Effective Date: 03-01-2019

Termination Date: 12-31-9999

Termination Reason: AMENDMENT

Remarks: BONE SPRING FORMATION

Location:

County

Section Township Range STR Location

2 26S 30E E2E2 [\[ Land Details \]](#)

Acreage:

Fee: 0

Indian: 0

State: 160

Federal: 0

Total: 160

Leases in this agreement:

VB-0839-0001 [\[ Lease Information \]](#)

VB-0850-0001 [\[ Lease Information \]](#)

Wells in this agreement:

API Number	Well Number	Township	Range	Section	Unit	Lot	Pool Name	Property Name
3001545787	581H	26S	30E	2	P		WILDCAT G-015 S263001O;BONE SPRING	QUAIL 2 STATE COM

# Communitization agreement

[Download](#)
[Printer Friendly](#)
[Instructions](#)
[Post a comment!](#)

Communitization Name:

## QUAIL 2 STATE COM WELLS WOLFCAMP

Current Operator:

Original Operator: EOG RESOURCES INC

[\[ Operator Details \]](#)

PUN: 1385583

Communitization Status Code: Approved

Comm Beneficiary Institution:

OCD Order Number 0

Approval Date: 06-14-2019

Effective Date: 03-01-2019

Termination Date: 12-31-9999

Termination Reason: AMENDMENT

Remarks: MULTIPLE WELLS; WOLFCAMP FORMATION

Location:

County

Section Township Range STR Location

2 26S 30E ALL [\[ Land Details \]](#)

Acreage:

Fee: 0

Indian: 0

State: 640

Federal: 0

Total: 640

Leases in this agreement:

VB-0839-0001 [\[ Lease Information \]](#)

VB-0850-0001 [\[ Lease Information \]](#)

Wells in this agreement:

API Number	Well Number	Township	Range	Section	Unit	Lot	Pool Name	Property Name
3001545793	707H	26S	30E	2	O		PURPLE SAGE;WOLFCAMP (GAS)	QUAIL 2 STATE COM
3001546274	722H	26S	30E	2	O		PURPLE SAGE;WOLFCAMP (GAS)	QUAIL 2 STATE COM
3001546275	706H	26S	30E	2	N		PURPLE SAGE;WOLFCAMP (GAS)	QUAIL 2 STATE COM
3001546276	724H	26S	30E	2	N		PURPLE SAGE;WOLFCAMP (GAS)	QUAIL 2 STATE COM
3001546277	725H	26S	30E	2	M		PURPLE SAGE;WOLFCAMP (GAS)	QUAIL 2 STATE COM
3001546278	768H	26S	30E	2	M		PURPLE SAGE;WOLFCAMP (GAS)	QUAIL 2 STATE COM
3001546279	705H	26S	30E	2	M		PURPLE SAGE;WOLFCAMP (GAS)	QUAIL 2 STATE COM

Revised March 23, 2017

RECEIVED:	REVIEWER:	TYPE:	APP NO:
-----------	-----------	-------	---------

ABOVE THIS TABLE FOR OCD DIVISION USE ONLY

**NEW MEXICO OIL CONSERVATION DIVISION**  
 - Geological & Engineering Bureau -  
 1220 South St. Francis Drive, Santa Fe, NM 87505



**ADMINISTRATIVE APPLICATION CHECKLIST**

THIS CHECKLIST IS MANDATORY FOR ALL ADMINISTRATIVE APPLICATIONS FOR EXCEPTIONS TO DIVISION RULES AND REGULATIONS WHICH REQUIRE PROCESSING AT THE DIVISION LEVEL IN SANTA FE

Applicant: \_\_\_\_\_ OGRID Number: \_\_\_\_\_  
 Well Name: \_\_\_\_\_ API: \_\_\_\_\_  
 Pool: \_\_\_\_\_ Pool Code: \_\_\_\_\_

**SUBMIT ACCURATE AND COMPLETE INFORMATION REQUIRED TO PROCESS THE TYPE OF APPLICATION INDICATED BELOW**

1) **TYPE OF APPLICATION:** Check those which apply for [A]

A. Location – Spacing Unit – Simultaneous Dedication

☐ NSL      ☐ NSP (PROJECT AREA)      ☐ NSP (PRORATION UNIT)      ☐ SD

B. Check one only for [ I ] or [ II ]

[ I ] Commingling – Storage – Measurement

☐ DHC    ☐ CTB    ☐ PLC    ☐ PC    ☐ OLS    ☐ OLM

[ II ] Injection – Disposal – Pressure Increase – Enhanced Oil Recovery

☐ WFX    ☐ PMX    ☐ SWD    ☐ IPI    ☐ EOR    ☐ PPR

2) **NOTIFICATION REQUIRED TO:** Check those which apply.

- A. ☐ Offset operators or lease holders  
 B. ☐ Royalty, overriding royalty owners, revenue owners  
 C. ☐ Application requires published notice  
 D. ☐ Notification and/or concurrent approval by SLO  
 E. ☐ Notification and/or concurrent approval by BLM  
 F. ☐ Surface owner  
 G. ☐ For all of the above, proof of notification or publication is attached, and/or,  
 H. ☐ No notice required

**FOR OCD ONLY**

- ☐ Notice Complete  
☐ Application Content Complete

3) **CERTIFICATION:** I hereby certify that the information submitted with this application for administrative approval is **accurate** and **complete** to the best of my knowledge. I also understand that **no action** will be taken on this application until the required information and notifications are submitted to the Division.

**Note: Statement must be completed by an individual with managerial and/or supervisory capacity.**

\_\_\_\_\_  
 Print or Type Name

\_\_\_\_\_  
 Date

\_\_\_\_\_  
 Phone Number

*Lisa Trascher*  
 \_\_\_\_\_  
 Signature

\_\_\_\_\_  
 e-mail Address

**From:** [Engineer, OCD, EMNRD](#)  
**To:** [Lisa Trascher](#)  
**Cc:** [McClure, Dean, EMNRD](#); [Bratcher, Mike, EMNRD](#); [lisa@rwbyram.com](mailto:lisa@rwbyram.com); [Holm, Anchor E.](#); [Dawson, Scott](#)  
**Subject:** Approved Administrative Order PLC-654-A  
**Date:** Thursday, March 18, 2021 9:05:27 AM  
**Attachments:** [PLC654A Order.pdf](#)

NMOCD has issued Administrative Order PLC-654-A which authorizes EOG Resources, Inc. (7377) to surface commingle or off-lease measure, as applicable, the following wells:

Well API	Well Name	Location (NMPPM)	Pool Code
30-015-45788	Quail 2 State #594H	C-02-26S-30E	97814
30-015-45787	Quail 2 State Com #581H	A-02-26S-30E	97814
30-015-45793	Quail 2 State Com #707H	C-02-26S-30E	98220
30-015-46279	Quail 2 State Com #705H	D-02-26S-30E	98220
30-015-46275	Quail 2 State Com #706H	C-02-26S-30E	98220
30-015-46274	Quail 2 State Com #722H	C-02-26S-30E	98220
30-015-46276	Quail 2 State Com #724H	C-02-26S-30E	98220
30-015-46277	Quail 2 State Com #725H	D-02-26S-30E	98220
30-015-46278	Quail 2 State Com #768H	D-02-26S-30E	98220
30-015-47121	Quail 2 State Com #701H	A-02-26S-30E	98220
30-015-47122	Quail 2 State Com #702H	B-02-26S-30E	98220
30-015-47123	Quail 2 State Com #720H	A-02-26S-30E	98220
30-015-47120	Quail 2 State Com #721H	B-02-26S-30E	98220

The administrative order is attached to this email and can also be found online at OCD Imaging.

Please review the content of the order to ensure you are familiar with the authorities granted and any conditions of approval.

Dean McClure  
 Petroleum Engineer, Oil Conservation Division  
 New Mexico Energy, Minerals and Natural Resources Department  
 (505) 469-8211

**STATE OF NEW MEXICO  
ENERGY, MINERALS AND NATURAL RESOURCES DEPARTMENT  
OIL CONSERVATION DIVISION**

**APPLICATION FOR SURFACE COMMINGLING  
SUBMITTED BY EOG RESOURCES, INC.**

**ORDER NO. PLC-654-A**

**ORDER**

The Director of the New Mexico Oil Conservation Division (“OCD”), having considered the application and the recommendation of the OCD Engineering Bureau, issues the following Order.

**FINDINGS OF FACT**

1. EOG Resources, Inc. (“Applicant”) submitted a complete application to surface commingle and off-lease measure the oil and gas production ("Application") from the pools, leases, and wells identified in Exhibit A.
2. To the extent that ownership is identical, Applicant submitted a certification by a licensed attorney or qualified petroleum landman that the ownership in the pools, leases, and wells to be commingled is identical as defined in 19.15.12.7(B) NMAC.
3. Applicant proposed a method to allocate the oil and gas production to the pools, leases, and wells to be commingled.
4. To the extent that ownership is diverse, Applicant provided notice of the Application to all persons owning an interest in the oil and gas production to be commingled, including the owners of royalty and overriding royalty interests, regardless of whether they have a right or option to take their interests in kind, and those persons either submitted a written waiver or did not file an objection to the Application.
5. Applicant provided notice of the Application to the Bureau of Land Management (“BLM”) or New Mexico State Land Office (“NMSLO”), as applicable.
6. Applicant certified the commingling of oil and gas production from the pools, leases, and wells will not in reasonable probability reduce the value of the oil and gas production to less than if it had remained segregated.
7. Applicant in the notice for the Application stated that it sought authorization to add additional pools, leases, and wells and identified the parameters to make such additions.
8. Applicant stated that it sought authorization to surface commingle and off-lease measure, as applicable, oil and gas production from an infill well which produces from a pool and spacing unit dedicated to a well identified in Exhibit A.

### **CONCLUSIONS OF LAW**

9. OCD has jurisdiction to issue this Order pursuant to the Oil and Gas Act, NMSA 1978, §§ 70-2-6, 70-2-11, 70-2-12, 70-2-16, and 70-2-17, and 19.15.12 NMAC.
10. Applicant satisfied the notice requirements for the Application in accordance with 19.15.12.10(A)(2), (C)(4)(c), and (C)(4)(e) NMAC, as applicable.
11. Applicant's proposed method of allocation, as modified herein, complies with 19.15.12.10(B)(1) or (C)(1) NMAC, as applicable.
12. Commingling of oil and gas production from state, federal, or tribal leases shall not commence until approved by the BLM or NMSLO, as applicable, in accordance with 19.15.12.10(B)(3) and (C)(4)(h) NMAC.
13. Applicant did not give adequate notice that it sought authorization to add pools, leases, or wells as required by 19.15.12.10(C)(4)(g) NMAC.
14. By granting the Application with the conditions specified below, this Order prevents waste and protects correlative rights, public health, and the environment.

### **ORDER**

1. Applicant is authorized to surface commingle and off-lease measure oil and gas production from the pools, leases, and wells identified in Exhibit A.

Applicant is authorized to surface commingle and off-lease measure, as applicable, oil and gas production from an infill well producing from the same pool and spacing unit dedicated to a well identified in Exhibit A.

2. This Order supersedes Order PLC-654.
3. The allocation of oil and gas production to an infill well shall be determined in the same manner as oil and gas production to the well dedicated to the pool and spacing unit.
4. The oil and gas production for each well identified in Exhibit A shall be separated and metered prior to commingling.
5. Applicant shall measure the commingled oil at a central tank battery described in Exhibit A in accordance with 19.15.18.15 NMAC or 19.15.23.8 NMAC.
6. Applicant shall measure the commingled gas at a central delivery point or central tank battery described in Exhibit A in accordance with 19.15.19.9 NMAC, provided however that if the gas is flared, and regardless of whether OCD has granted an exception pursuant to 19.15.18.12(B) NMAC, Applicant shall report the gas in accordance with 19.15.18.12(F) NMAC.
7. Applicant shall calibrate the meters used to measure or allocate oil and gas production in accordance with 19.15.12.10(C)(2) NMAC.



8. If the commingling of oil and gas production from any pool, lease, or well reduces the value of the commingled oil and gas production to less than if it had remained segregated, no later than sixty (60) days after the decrease in value has occurred Applicant shall submit a new surface commingling application to OCD to amend this Order to remove the pool, lease, or well whose oil and gas production caused the decrease in value. If Applicant fails to submit a new application, this Order shall terminate on the following day, and if OCD denies the application, this Order shall terminate on the date of such action.
9. Applicant's request for authorization to add pools, leases, and wells prospectively pursuant to 19.15.12.10(C)(4)(g) NMAC is denied.
10. Applicant shall submit Forms C-102 and C-103 to the OCD Engineering Bureau identifying an infill well prior to commingling and off-lease measuring, as applicable, oil and gas production from an infill well with the production from another well.
11. Applicant shall not commence commingling oil or gas production from state, federal, or tribal leases until approved by the BLM or NMSLO, as applicable.
12. OCD retains jurisdiction and reserves the right to modify or revoke this Order as it deems necessary to prevent waste or protect correlative rights, public health, or the environment.

**STATE OF NEW MEXICO  
OIL CONSERVATION DIVISION**



**ADRIENNE SANDOVAL**  
**DIRECTOR**  
AS/dm

**DATE:** 3/17/2021

State of New Mexico  
Energy, Minerals and Natural Resources Department

## Exhibit A

Order: PLC-654-A

Operator: EOG Resources, Inc. (7377)

Central Tank Battery: Quail 2 State Central Tank Battery

Central Tank Battery Location (NMPM): Unit G, Section 2, Township 26 South, Range 30 East

Gas Custody Transfer Meter Location (NMPM): Unit G, Section 2, Township 26 South, Range 30 East

### Pools

Pool Name	Pool Code
WILDCAT G-015 S2630010; BONE SPRING	97814
PURPLE SAGE; WOLFCAMP (GAS)	98220

### Leases as defined in 19.15.12.7(C) NMAC

Lease	Location (NMPM)
CA WC NMSLO 1385583	All
CA BS NMSLO 1378814	E/2 E/2

### Wells

Well API	Well Name	Location (NMPM)	Pool Code	Train
30-015-45788	Quail 2 State #594H	C-02-26S-30E	97814	
30-015-45787	Quail 2 State Com #581H	A-02-26S-30E	97814	
30-015-45793	Quail 2 State Com #707H	C-02-26S-30E	98220	
30-015-46279	Quail 2 State Com #705H	D-02-26S-30E	98220	
30-015-46275	Quail 2 State Com #706H	C-02-26S-30E	98220	
30-015-46274	Quail 2 State Com #722H	C-02-26S-30E	98220	
30-015-46276	Quail 2 State Com #724H	C-02-26S-30E	98220	
30-015-46277	Quail 2 State Com #725H	D-02-26S-30E	98220	
30-015-46278	Quail 2 State Com #768H	D-02-26S-30E	98220	
30-015-47121	Quail 2 State Com #701H	A-02-26S-30E	98220	
30-015-47122	Quail 2 State Com #702H	B-02-26S-30E	98220	
30-015-47123	Quail 2 State Com #720H	A-02-26S-30E	98220	
30-015-47120	Quail 2 State Com #721H	B-02-26S-30E	98220	

**District I**  
1625 N. French Dr., Hobbs, NM 88240  
Phone:(575) 393-6161 Fax:(575) 393-0720  
**District II**  
811 S. First St., Artesia, NM 88210  
Phone:(575) 748-1283 Fax:(575) 748-9720  
**District III**  
1000 Rio Brazos Rd., Aztec, NM 87410  
Phone:(505) 334-6178 Fax:(505) 334-6170  
**District IV**  
1220 S. St Francis Dr., Santa Fe, NM 87505  
Phone:(505) 476-3470 Fax:(505) 476-3462

**State of New Mexico**  
**Energy, Minerals and Natural Resources**  
**Oil Conservation Division**  
**1220 S. St Francis Dr.**  
**Santa Fe, NM 87505**

CONDITIONS  
  
Action 20434

**CONDITIONS OF APPROVAL**

Operator: EOG RESOURCES INC      P.O. Box 2267      Midland, TX79702			OGRID: 7377	Action Number: 20434	Action Type: C-107B
OCD Reviewer	Condition				
dmcclure	Please review the content of the order to ensure you are familiar with the authorities granted and any conditions of approval.				