

Submit 1 Copy To Appropriate District Office  
 District I – (575) 393-6161  
 1625 N. French Dr., Hobbs, NM 88240  
 District II – (575) 748-1283  
 811 S. First St., Artesia, NM 88210  
 District III – (505) 334-6178  
 1000 Rio Brazos Rd., Aztec, NM 87410  
 District IV – (505) 476-3460  
 1220 S. St. Francis Dr., Santa Fe, NM 87505

State of New Mexico  
 Energy, Minerals and Natural Resources

Form C-103  
 Revised July 18, 2013

OIL CONSERVATION DIVISION  
 1220 South St. Francis Dr.  
 Santa Fe, NM 87505

SUNDRY NOTICES AND REPORTS ON WELLS (DO NOT USE THIS FORM FOR PROPOSALS TO DRILL OR TO DEEPEN OR PLUG BACK TO A DIFFERENT RESERVOIR. USE "APPLICATION FOR PERMIT" (FORM C-101) FOR SUCH PROPOSALS.) 1. Type of Well: Oil Well <input type="checkbox"/> Gas Well <input checked="" type="checkbox"/> Other		WELL API NO. 30-045-32804
2. Name of Operator LOGOS Operating, LLC		5. Indicate Type of Lease STATE <input type="checkbox"/> FEE <input type="checkbox"/>
3. Address of Operator 2010 Afton Place, Farmington, NM 87401		6. State Oil & Gas Lease No. Federal NMNM114724, NMNM073204
4. Well Location Unit Letter <u>L</u> : <u>1920'</u> feet from the <u>FSL</u> line and <u>805'</u> feet from the <u>FWL</u> line Section <u>20</u> Township <u>32N</u> Range <u>11W</u> NMPM County <u>San Juan</u>		7. Lease Name or Unit Agreement Name New Mexico 32 11 Com
11. Elevation (Show whether DR, RKB, RT, GR, etc.) 6639'		8. Well Number <u>1C</u> 9. OGRID Number <u>289408</u> 10. Pool name or Wildcat Basin Dakota / Blanco Mesaverde

12. Check Appropriate Box to Indicate Nature of Notice, Report or Other Data

NOTICE OF INTENTION TO:		SUBSEQUENT REPORT OF:	
PERFORM REMEDIAL WORK <input type="checkbox"/>	PLUG AND ABANDON <input type="checkbox"/>	REMEDIAL WORK <input type="checkbox"/>	ALTERING CASING <input type="checkbox"/>
TEMPORARILY ABANDON <input type="checkbox"/>	CHANGE PLANS <input type="checkbox"/>	COMMENCE DRILLING OPNS. <input type="checkbox"/>	P AND A <input type="checkbox"/>
PULL OR ALTER CASING <input type="checkbox"/>	MULTIPLE COMPL <input type="checkbox"/>	CASING/CEMENT JOB <input type="checkbox"/>	
DOWNHOLE COMMINGLE <input checked="" type="checkbox"/>			
CLOSED-LOOP SYSTEM <input type="checkbox"/>			
OTHER: <input type="checkbox"/>		OTHER: <input type="checkbox"/>	

13. Describe proposed or completed operations. (Clearly state all pertinent details, and give pertinent dates, including estimated date of starting any proposed work). SEE RULE 19.15.7.14 NMAC. For Multiple Completions: Attach wellbore diagram of proposed completion or recompletion.

Pre-approved Pool Division Order R-13122.

Pools to be commingled: Blanco Mesaverde (72319) and Basin Dakota (71599).

Perforated Intervals:

Blanco Mesaverde: 4821' - 5902'

Basin Dakota: 7781' - 7998'

Fixed percentage allocation based upon production data Gas:82% Blanco Mesaverde and 18% Basin Dakota, Oil: 100% Blanco Mesaverde and 0% Basin Dakota. This is based upon the historic production of both the Mesaverde and Dakota production zones within the well.

Commingling will not reduce the value of reserves.

Interest owners in the spacing unit have been notified of the intent of the downhole commingle and no objection was received within 20 days of sending the notice. BLM has been notified on sundry notice form 3160-5.

I hereby certify that the information above is true and complete to the best of my knowledge and belief.

SIGNATURE Tamra Sessions TITLE Regulatory Specialist DATE 4/26/21

Type or print name Tamra Sessions E-mail address: tsessions@logosresourcesllc.com PHONE: 505-324-4145

**For State Use Only**

APPROVED BY: \_\_\_\_\_ TITLE \_\_\_\_\_ DATE \_\_\_\_\_

Conditions of Approval (if any): \_\_\_\_\_



## **DOWNHOLE COMMINGLE PROCEDURE AND ALLOCATION-NMOCD (2021)**

**New Mexico 32-11 Com 1C**

**30-045-32804**

**1920' FSL & 805' FWL**

**Section 20, T32N, R11W**

**San Juan, New Mexico**

**LAT: 36.968691° N LONG: -107.016711° W**

**Mesaverde/Dakota**

### **PROJECT OBJECTIVE:**

Remove packer and downhole commingle Mesaverde and Dakota.

### **WORKOVER PROCEDURE:**

1. Hold safety meeting. MIRU workover rig. Place fire and safety equipment in strategic locations. Comply with all LOGOS, BLM, and NMOCD rules and regulations.
2. Lay flow lines. Check and record casing and tubing pressures. Rig up blow lines from casing valves to rig pit. Kill well if necessary.
3. Nipple down wellhead and nipple up BOP.
4. Release Mesaverde tubing string. Trip out of hole with Mesaverde tubing string and lay down.
5. Release Dakota tubing string. Trip out of hole with Dakota tubing string and lay down.
6. Run in hole with packer plucker to retrieve Model D Packer at 6000'. Trip out of hole with packer plucker assembly and string.
7. Run in hole with single 2-3/8" production tubing string.
8. Return to production as a Mesaverde/Dakota commingle.



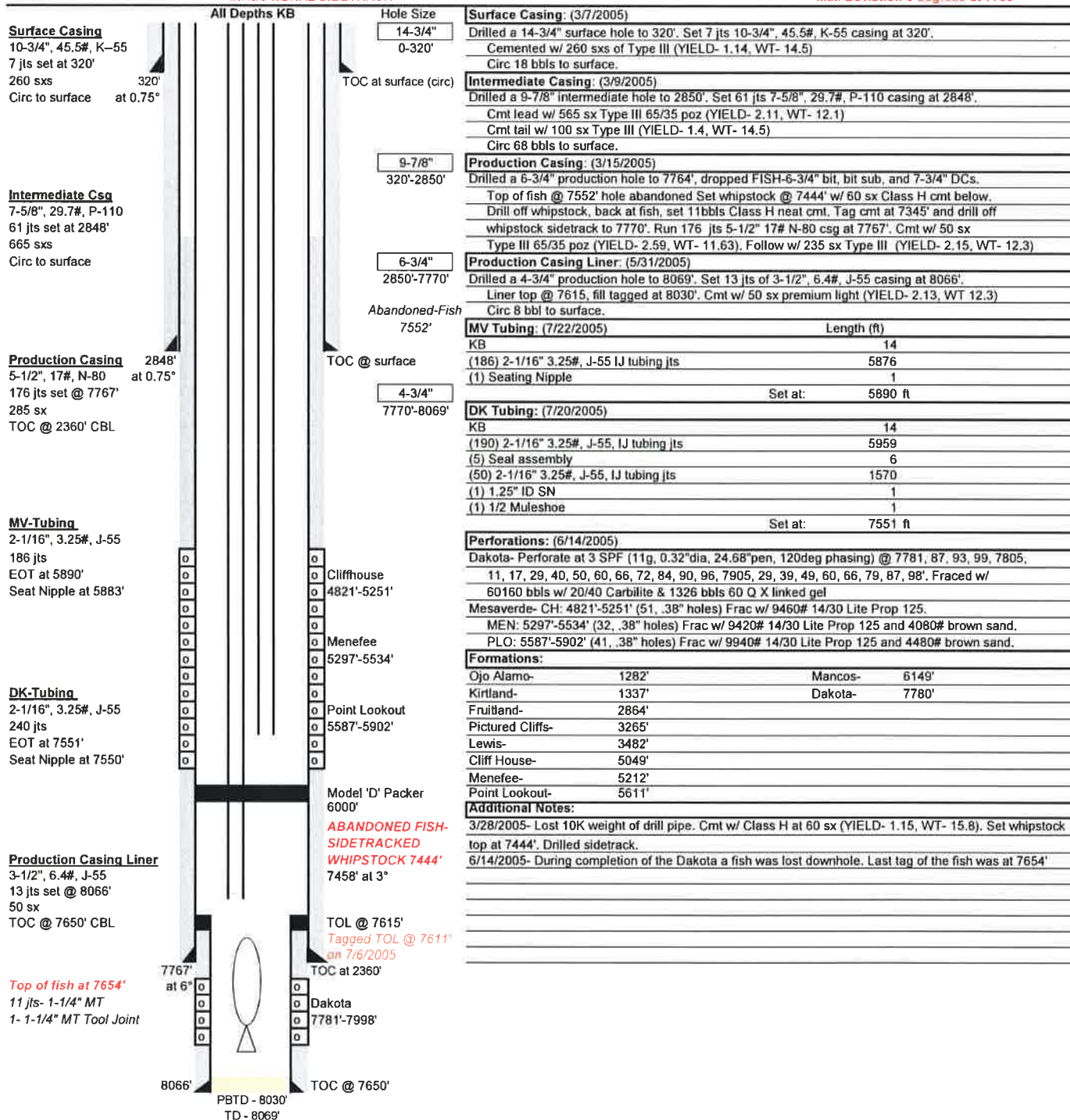
## Wellbore Schematic

Well Name: New Mexico 32-11 Corn 1C  
 Location: Sec 20, T32N, R11W 1920' FSL & 805' FWL  
 County: San Juan  
 API #: 30-045-32804  
 Co-ordinates: Lat 36.968691 Long -107.016711  
 Elevations:  
 Depths (KB): GROUND: 6639'  
 KB: 6653'  
 PBD: 8030'  
 TD: 8069'

Date Prepared: 12/30/2020 Gomez  
 Reviewed By: 12/31/2020 Hesper  
 Spud Date: 3/6/2005  
 Completion Date: 6/14/2005  
 Last Workover Date:

## DIRECTIONAL SIDETRACK

\*Max Deviation 6 degrees at 7760'





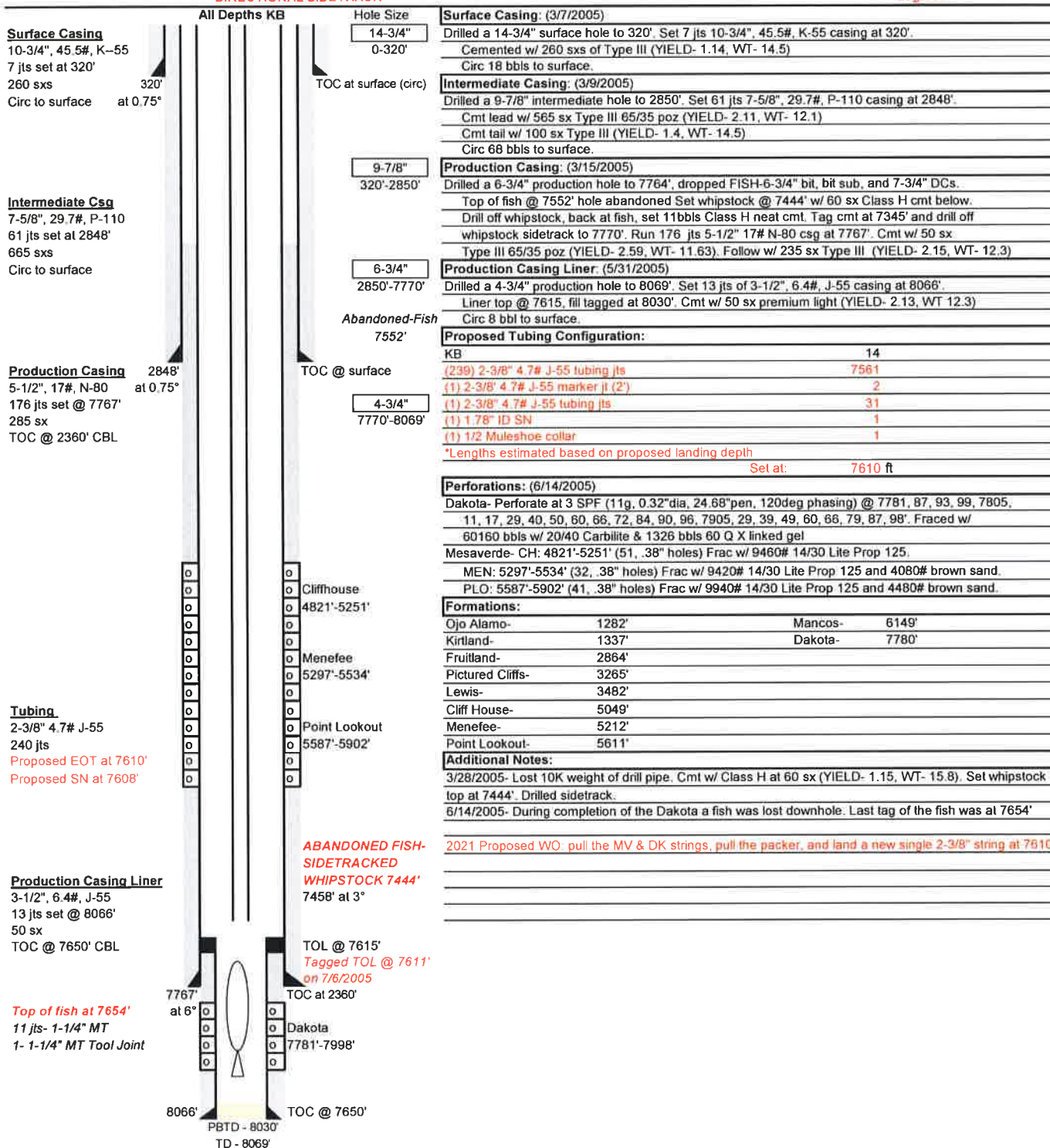
## PROPOSED Wellbore Schematic

Well Name: New Mexico 32-11 Corn 1C  
 Location: Sec 20, T32N, R11W 1920' FSL & 805' FWL  
 County: San Juan  
 API #: 30-045-32804  
 Co-ordinates: Lat 36.968691 Long -107.016711  
 Elevations: GROUND: 6639'  
 KB: 6653'  
 Depths (KB): PBD: 8030'  
 TD: 8069'

Date Prepared: 12/30/2020 Gomez  
 Reviewed By: 12/31/2020 Hepe  
 Updated By: 3/19/2021 Moss  
 Spud Date: 3/6/2005  
 Completion Date: 6/14/2005  
 Last Workover Date:

## DIRECTIONAL SIDETRACK

\*Max Deviation 6 degrees at 7760'





LOGOS Operating, LLC  
New Mexico 32 11 Com 1C  
Commingle  
Page 2 of 2

**PRODUCTION ALLOCATION**

Historic production data from both zones in this well was gathered and analyzed. Cumulative production was used to determine allocations and allocations were verified with recent production history.

- **Gas Production**

Total Cumulative Gas Production	1,115 MMcf
Cumulative MV Gas Production	919 MMcf
Cumulative DK Gas Production	196 MMcf

MV allocation = MV cumulative/total cumulative =  $919/1,115 = 82\%$

DK allocation = DK cumulative /total cumulative =  $196/1,115 = 18\%$

- **Oil Production**

Total Cumulative Oil Production	725 bbl
Cumulative MV Oil Production	725 bbl
Cumulative DK Oil Production	0 bbl

MV allocation = MV cumulative/total cumulative =  $725/725 = 100\%$

- **Water Production**

Total Cumulative Water Production	3412 bbl
Cumulative MV Water Production	1404 bbl
Cumulative DK Water Production	2008

MV allocation = MV cumulative/total cumulative =  $1404/3412 = 41\%$

DK allocation = DK cumulative /total cumulative =  $2008/3412 = 59\%$

Prod Date	Cr No	Contract Party Name	Cr Party ID	Meter No	Meter Name	Operator ID	Operator Name	System Name	Sub-System Nm	Gathering System	State	Meter PSIG	Well BTU
5/1/2019 371K	LOGOS	OPERATING, LLC	1151264	36612A	NM 32-11 COM #1C MV	1151264	LOGOS	FOUR	KUTZ	COYOTE	NM	41.32516	1.1866
5/1/2019 371K	LOGOS	OPERATING, LLC	1151264	36613A	NM 32-11 COM #1C DK	1151264	LOGOS	FOUR	KUTZ	COYOTE	NM	11.47613	0
6/1/2019 371K	LOGOS	OPERATING, LLC	1151264	36612A	NM 32-11 COM #1C MV	1151264	LOGOS	FOUR	KUTZ	COYOTE	NM	41.9746	1.186579
6/1/2019 371K	LOGOS	OPERATING, LLC	1151264	36613A	NM 32-11 COM #1C DK	1151264	LOGOS	FOUR	KUTZ	COYOTE	NM	42.33905	1.203998
7/1/2019 371K	LOGOS	OPERATING, LLC	1151264	36612A	NM 32-11 COM #1C MV	1151264	LOGOS	FOUR	KUTZ	COYOTE	NM	45.03525	1.186579
7/1/2019 371K	LOGOS	OPERATING, LLC	1151264	36613A	NM 32-11 COM #1C DK	1151264	LOGOS	FOUR	KUTZ	COYOTE	NM	44.127	1.203998
8/1/2019 371K	LOGOS	OPERATING, LLC	1151264	36612A	NM 32-11 COM #1C MV	1151264	LOGOS	FOUR	KUTZ	COYOTE	NM	43.03683	1.186579
8/1/2019 371K	LOGOS	OPERATING, LLC	1151264	36613A	NM 32-11 COM #1C DK	1151264	LOGOS	FOUR	KUTZ	COYOTE	NM	42.14763	1.203998
9/1/2019 371K	LOGOS	OPERATING, LLC	1151264	36612A	NM 32-11 COM #1C MV	1151264	LOGOS	FOUR	KUTZ	COYOTE	NM	29.41443	1.186579
9/1/2019 371K	LOGOS	OPERATING, LLC	1151264	36613A	NM 32-11 COM #1C DK	1151264	LOGOS	FOUR	KUTZ	COYOTE	NM	28.69316	1.203998
10/1/2019 371K	LOGOS	OPERATING, LLC	1151264	36612A	NM 32-11 COM #1C MV	1151264	LOGOS	FOUR	KUTZ	COYOTE	NM	28.13146	1.186579
10/1/2019 371K	LOGOS	OPERATING, LLC	1151264	36613A	NM 32-11 COM #1C DK	1151264	LOGOS	FOUR	KUTZ	COYOTE	NM	27.6477	1.203998
11/1/2019 371K	LOGOS	OPERATING, LLC	1151264	36612A	NM 32-11 COM #1C MV	1151264	LOGOS	FOUR	KUTZ	COYOTE	NM	27.2778	1.180104
11/1/2019 371K	LOGOS	OPERATING, LLC	1151264	36613A	NM 32-11 COM #1C DK	1151264	LOGOS	FOUR	KUTZ	COYOTE	NM	25.73346	1.203998
12/1/2019 371K	LOGOS	OPERATING, LLC	1151264	36612A	NM 32-11 COM #1C MV	1151264	LOGOS	FOUR	KUTZ	COYOTE	NM	26.271	1.180104
12/1/2019 371K	LOGOS	OPERATING, LLC	1151264	36613A	NM 32-11 COM #1C DK	1151264	LOGOS	FOUR	KUTZ	COYOTE	NM	26.05453	1.180104
1/1/2020 371K	LOGOS	OPERATING, LLC	1151264	36612A	NM 32-11 COM #1C MV	1151264	LOGOS	FOUR	KUTZ	COYOTE	NM	25.09576	1.203998
1/1/2020 371K	LOGOS	OPERATING, LLC	1151264	36613A	NM 32-11 COM #1C DK	1151264	LOGOS	FOUR	KUTZ	COYOTE	NM	25.93479	1.180104
2/1/2020 371K	LOGOS	OPERATING, LLC	1151264	36612A	NM 32-11 COM #1C MV	1151264	LOGOS	FOUR	KUTZ	COYOTE	NM	25.09549	1.203998
2/1/2020 371K	LOGOS	OPERATING, LLC	1151264	36613A	NM 32-11 COM #1C DK	1151264	LOGOS	FOUR	KUTZ	COYOTE	NM	24.16332	1.180104
3/1/2020 371K	LOGOS	OPERATING, LLC	1151264	36612A	NM 32-11 COM #1C MV	1151264	LOGOS	FOUR	KUTZ	COYOTE	NM	23.09934	1.203998
3/1/2020 371K	LOGOS	OPERATING, LLC	1151264	36613A	NM 32-11 COM #1C DK	1151264	LOGOS	FOUR	KUTZ	COYOTE	NM	24.93486	1.180104
4/1/2020 371K	LOGOS	OPERATING, LLC	1151264	36612A	NM 32-11 COM #1C MV	1151264	LOGOS	FOUR	KUTZ	COYOTE	NM	23.34435	1.173837
4/1/2020 371K	LOGOS	OPERATING, LLC	1151264	36613A	NM 32-11 COM #1C DK	1151264	LOGOS	FOUR	KUTZ	COYOTE	NM	26.25991	1.189409
5/1/2020 371K	LOGOS	OPERATING, LLC	1151264	36612A	NM 32-11 COM #1C MV	1151264	LOGOS	FOUR	KUTZ	COYOTE	NM	25.59657	1.173837
5/1/2020 371K	LOGOS	OPERATING, LLC	1151264	36613A	NM 32-11 COM #1C DK	1151264	LOGOS	FOUR	KUTZ	COYOTE	NM	28.25634	1.189409
6/1/2020 371K	LOGOS	OPERATING, LLC	1151264	36612A	NM 32-11 COM #1C MV	1151264	LOGOS	FOUR	KUTZ	COYOTE	NM	27.62939	1.173837
6/1/2020 371K	LOGOS	OPERATING, LLC	1151264	36613A	NM 32-11 COM #1C DK	1151264	LOGOS	FOUR	KUTZ	COYOTE	NM	28.67099	1.189409
7/1/2020 371K	LOGOS	OPERATING, LLC	1151264	36612A	NM 32-11 COM #1C MV	1151264	LOGOS	FOUR	KUTZ	COYOTE	NM	29.13898	1.173837
7/1/2020 371K	LOGOS	OPERATING, LLC	1151264	36613A	NM 32-11 COM #1C DK	1151264	LOGOS	FOUR	KUTZ	COYOTE	NM	27.61127	1.189409
8/1/2020 371K	LOGOS	OPERATING, LLC	1151264	36612A	NM 32-11 COM #1C MV	1151264	LOGOS	FOUR	KUTZ	COYOTE	NM	28.35895	1.173837
8/1/2020 371K	LOGOS	OPERATING, LLC	1151264	36613A	NM 32-11 COM #1C DK	1151264	LOGOS	FOUR	KUTZ	COYOTE	NM	27.97143	1.189409
9/1/2020 371K	LOGOS	OPERATING, LLC	1151264	36612A	NM 32-11 COM #1C MV	1151264	LOGOS	FOUR	KUTZ	COYOTE	NM	28.63246	1.173837
9/1/2020 371K	LOGOS	OPERATING, LLC	1151264	36613A	NM 32-11 COM #1C DK	1151264	LOGOS	FOUR	KUTZ	COYOTE	NM	27.34859	1.189409
10/1/2020 371K	LOGOS	OPERATING, LLC	1151264	36612A	NM 32-11 COM #1C MV	1151264	LOGOS	FOUR	KUTZ	COYOTE	NM	27.84278	1.173837
10/1/2020 371K	LOGOS	OPERATING, LLC	1151264	36613A	NM 32-11 COM #1C DK	1151264	LOGOS	FOUR	KUTZ	COYOTE	NM	26.18945	1.195097
11/1/2020 371K	LOGOS	OPERATING, LLC	1151264	36612A	NM 32-11 COM #1C MV	1151264	LOGOS	FOUR	KUTZ	COYOTE	NM	26.61913	1.173837
11/1/2020 371K	LOGOS	OPERATING, LLC	1151264	36613A	NM 32-11 COM #1C DK	1151264	LOGOS	FOUR	KUTZ	COYOTE	NM	24.98624	1.195097
12/1/2020 371K	LOGOS	OPERATING, LLC	1151264	36612A	NM 32-11 COM #1C MV	1151264	LOGOS	FOUR	KUTZ	COYOTE	NM	25.30475	1.173837
12/1/2020 371K	LOGOS	OPERATING, LLC	1151264	36613A	NM 32-11 COM #1C DK	1151264	LOGOS	FOUR	KUTZ	COYOTE	NM	25.97876	1.195097
1/1/2021 371K	LOGOS	OPERATING, LLC	1151264	36612A	NM 32-11 COM #1C MV	1151264	LOGOS	FOUR	KUTZ	COYOTE	NM	25.51	1.173837
1/1/2021 371K	LOGOS	OPERATING, LLC	1151264	36613A	NM 32-11 COM #1C DK	1151264	LOGOS	FOUR	KUTZ	COYOTE	NM	26.60742	1.195097
2/1/2021 371K	LOGOS	OPERATING, LLC	1151264	36612A	NM 32-11 COM #1C MV	1151264	LOGOS	FOUR	KUTZ	COYOTE	NM	26.00242	1.173837
2/1/2021 371K	LOGOS	OPERATING, LLC	1151264	36613A	NM 32-11 COM #1C DK	1151264	LOGOS	FOUR	KUTZ	COYOTE	NM		

NEW MEXICO 32-11 001C COM MV Tank MASTER : 6547

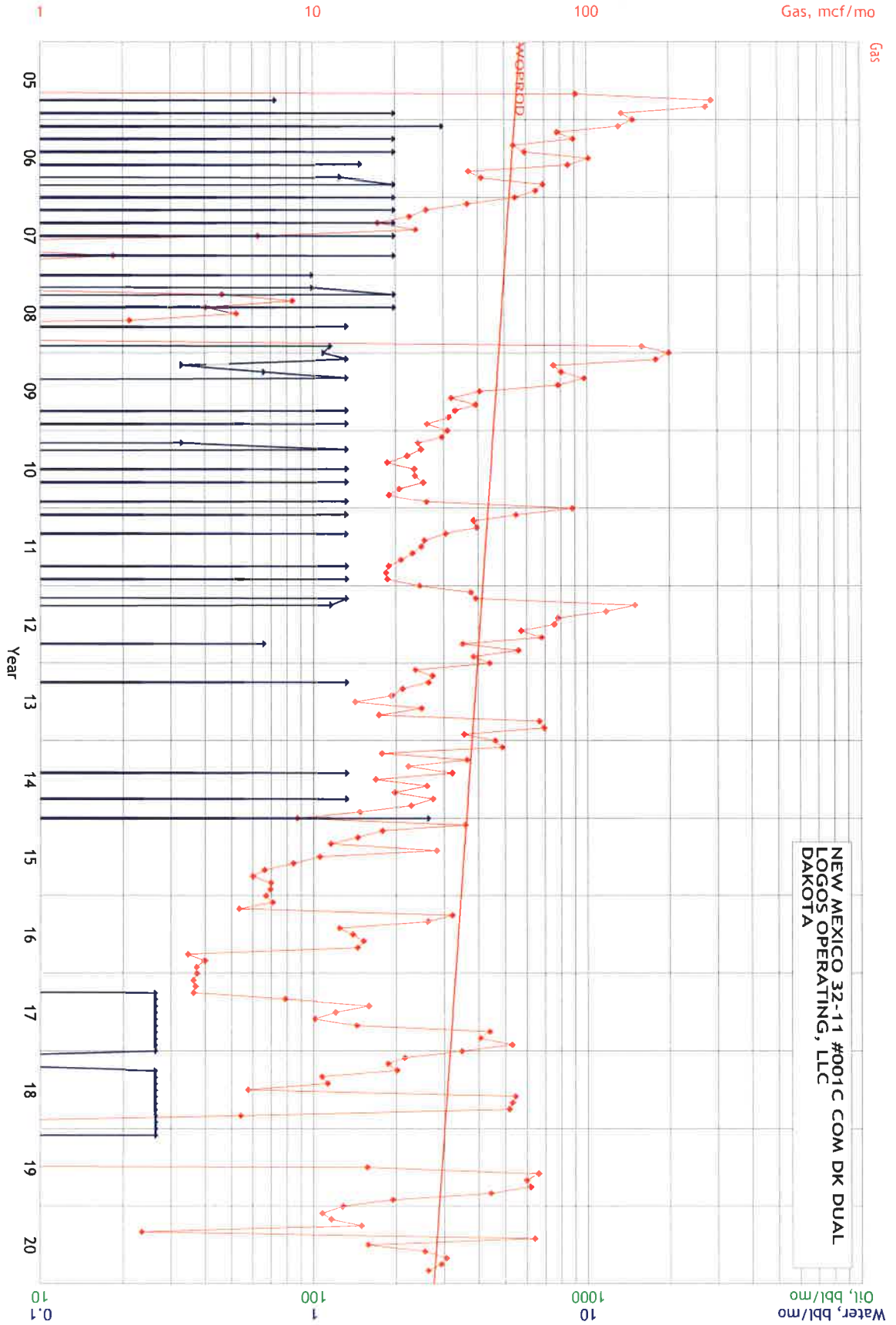
Monthly

Month	Top Gauge	Ending Oil	- Beginning Oil	+ Dispositions	Oil Production	Bottom Gauge	Ending Water	- Beginning Water	+ Water Dispositions	Water Production	Calculation Type
Feb, 2021		33.76	33.76	0	0		6.41	6.41	0	0	0 System Calculated
Jan, 2021		33.76	33.76	0	0		6.41	6.41	0	0	0 System Calculated
Dec, 2020		33.76	33.76	0	0		6.41	6.41	0	0	0 System Calculated
Nov, 2020		33.76	33.76	0	0		6.41	6.41	0	0	0 System Calculated
Oct, 2020		33.76	33.76	0	0		6.41	6.41	0	0	0 System Calculated
Sep, 2020		33.76	33.76	0	0		6.41	6.41	0	0	0 System Calculated
Aug, 2020		33.76	33.76	0	0		6.41	6.41	0	0	0 System Calculated
Jul, 2020		33.76	27.07	0	6.69		6.41	6.41	0	0	0 System Calculated
Jun, 2020		27.07	27.07	0	0		6.41	6.41	0	0	0 System Calculated
May, 2020		27.07	27.07	0	0		6.41	6.41	0	0	0 System Calculated
Apr, 2020		27.07	16.3	0	10.77		6.41	6.41	0	0	0 System Calculated
Mar, 2020		16.3	16.3	0	0		6.41	6.41	0	0	0 System Calculated
Feb, 2020		16.3	14.27	0	2.04		6.41	6.41	0	0	0 System Calculated
Jan, 2020		14.27	11.65	0	2.62		6.41	6.41	0	0	0 System Calculated
Dec, 2019		11.65	11.65	0	0		6.41	6.41	0	0	0 System Calculated
Nov, 2019		11.65	11.65	0	0		6.41	6.41	0	0	0 System Calculated
Oct, 2019		11.65	11.65	0	0		6.41	6.41	0	0	0 System Calculated
Sep, 2019		11.65	11.65	0	0		6.41	6.41	0	0	0 System Calculated
Aug, 2019		11.65	11.65	0	0		6.41	6.41	0	0	0 System Calculated
Jul, 2019		11.65	11.65	0	0		6.41	6.41	0	0	0 System Calculated
Jun, 2019		11.65	11.65	0	0		6.41	6.41	0	0	0 System Calculated
May, 2019		11.65	135.34	123.97	0.28		6.41	6.12	0	0.29	System Calculated
Apr, 2019		135.34	133.6	0	1.74		6.12	6.12	0	0	0 System Calculated
Mar, 2019		133.6	133.02	0	0.58		6.12	6.12	0	0	0 System Calculated
Feb, 2019		133.02	133.02	0	0		6.12	6.12	0	0	0 System Calculated
Jan, 2019		133.02	133.02	0	0		6.12	6.12	0	0	0 System Calculated
Dec, 2018		133.02	133.02	0	0		6.12	6.12	0	0	0 System Calculated
Nov, 2018		133.02	137.65	4.78	0.15		6.12	6.12	0	0	0 System Calculated
Oct, 2018		137.65	137.65	0	0		6.12	6.12	0	0	0 System Calculated
Sep, 2018		137.65	137.65	0	0		6.12	6.12	0	0	0 System Calculated
Aug, 2018		137.65	137.65	0	0		6.12	6.12	0	0	0 System Calculated
Jul, 2018		137.65	136.49	0	1.16		6.12	6.12	0	0	0 System Calculated
Jun, 2018		136.49	134.18	0	2.31		6.12	6.12	0	0	0 System Calculated
May, 2018		134.18	133.02	0	1.16		6.12	6.12	0	0	0 System Calculated
Apr, 2018		133.02	131.87	0	1.16		6.12	6.12	0	0	0 System Calculated
Mar, 2018		131.87	131	0	0.87		6.12	6.12	0	0	0 System Calculated

NEW MEXICO 32-11 001C COM MV Tank MASTER : 6547

NEW MEXICO 32-11 001C COM MV Tank MASTER : 6547													
Transaction													
Ticket	Record Date	Ticket Number	Net Oil	Free Water	Source Tank or Meter	Gross Volume	Calculation	Disposition	Product	Purchaser	Hauler		
Oil	5/8/2019	4442235	123.12		NEW MEXICO 32-11 001C COM MV 10464	123.4	System Calculated	Sales to truck	Crude Oil	WESTERN REFINING	WESTERN REFINING		
Corr.													
Gravity	BS&W	Top Gauge Open	Top Gauge Close	Bottom Gauge Open	Bottom Gauge Close	Open Temp	Close Temp	Observed Gravity	Observed Temp	Statement Volume	Use Statement	Volume to be Allocated	
51.4		10' 1 2/4"	1' 3 0/4"	0' 5 1/4"	0' 5 1/4"	64	64	51.8	64	123.97	1	123.97	

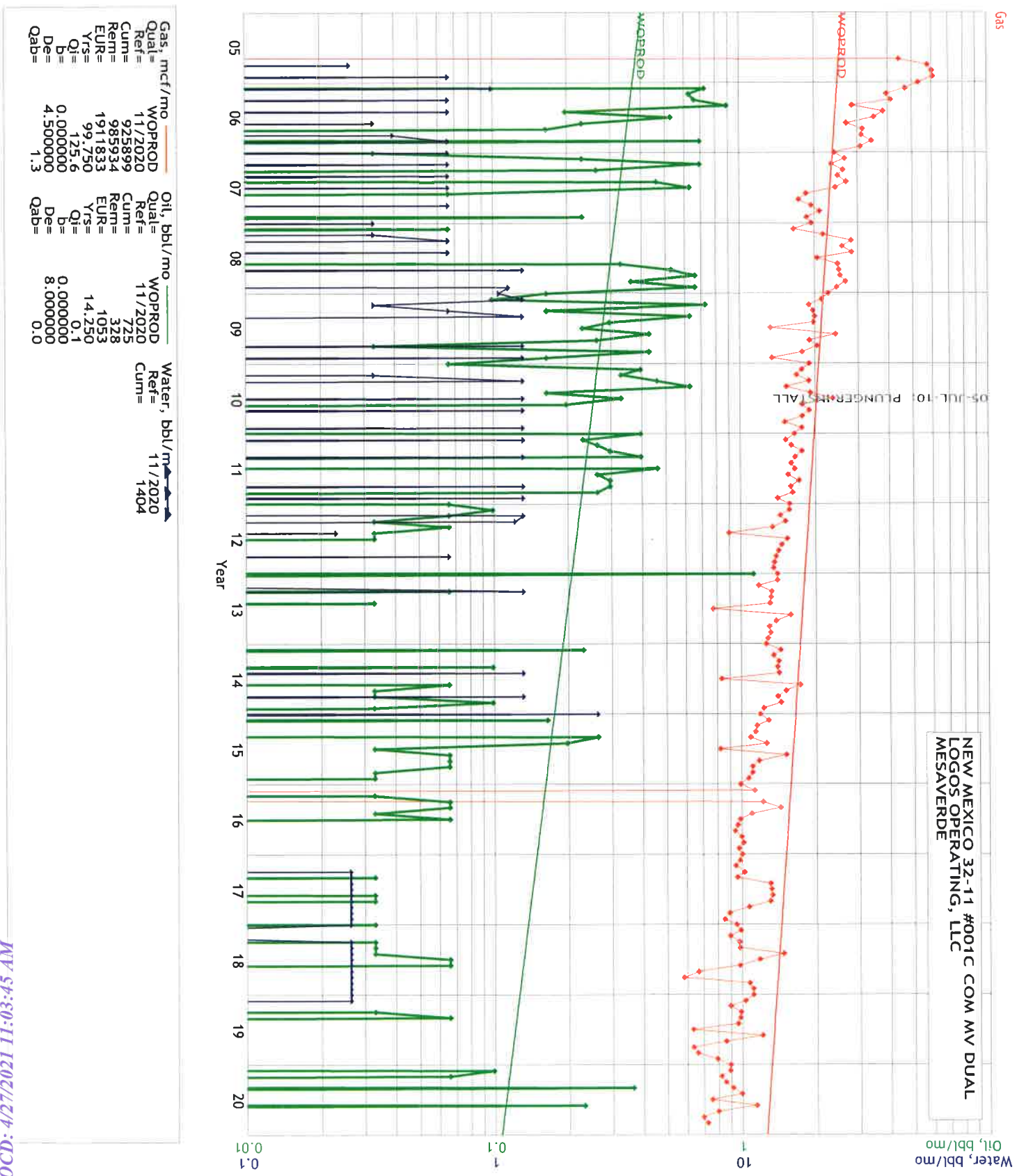




Gas, mcf/mo  
Qual= WOPROD  
Ref= 11/2020  
Cum= 198129  
Rem= 216032  
EUR= 414161  
Yrs= 96.250  
Q1= 27.6  
b= 0.000000  
De= 4.500000  
Qab= 0.3

Oil, bbl/mo  
Ref= 11/2020  
Cum= 0

Water, bbl/mo  
Ref= 11/2020  
Cum= 2008





2010 Afton Place  
Farmington, NM 87401  
Phone: (505) 278-8720  
Fax: (505) 326-6112

April 26, 2021

Bureau of Land Management  
Farmington Field Office  
6251 College Blvd, Suite A  
Farmington, NM 87402

RE: NEW MEXICO 32 11 COM 1C, 30-045-32804  
DOWNHOLE COMMINGLE REQUEST

LOGOS, as operator of the referenced well intends to downhole commingle production from the Blanco Mesaverde and Basin Dakota pools.

Attached production plots indicate both zones are capable of producing in paying quantities; however, the DK zone is particularly hampered by the sub-standard tubing size and the reduced annular space caused by the packer both of which inhibit the ability to plunger lift. Both zones will benefit from the installation of a shared 2-3/8" tubing string which will allow plunger lift and full annular space for plunger operations. The average monthly production for the DK over the past 12-month period is 566 mcf/month. MV average monthly production is 2,668 mcf/month. That being said, the DK is producing below its historically demonstrated production potential.

Sincerely,

Tamra Sessions  
Regulatory Specialist  
505-324-4145

**LOGOS Operating, LLC**

2010 Afton Place - Farmington, NM 87401 - Direct 505-278-8720 - Fax 505-326-6112

**District I**

1625 N. French Dr., Hobbs, NM 88240  
Phone:(575) 393-6161 Fax:(575) 393-0720

**District II**

811 S. First St., Artesia, NM 88210  
Phone:(575) 748-1283 Fax:(575) 748-9720

**District III**

1000 Rio Brazos Rd., Aztec, NM 87410  
Phone:(505) 334-6178 Fax:(505) 334-6170

**District IV**

1220 S. St Francis Dr., Santa Fe, NM 87505  
Phone:(505) 476-3470 Fax:(505) 476-3462

**State of New Mexico**  
**Energy, Minerals and Natural Resources**  
**Oil Conservation Division**  
**1220 S. St Francis Dr.**  
**Santa Fe, NM 87505**

COMMENTS

Action 25809

**COMMENTS**

Operator: LOGOS OPERATING, LLC      2010 Afton Place      Farmington, NM87401			OGRID: 289408	Action Number: 25809	Action Type: C-107A
Created By	Comment			Comment Date	
kpickford	KP GEO Review 5/4/2021			05/04/2021	



**District I**  
1625 N. French Dr., Hobbs, NM 88240  
Phone:(575) 393-6161 Fax:(575) 393-0720  
**District II**  
811 S. First St., Artesia, NM 88210  
Phone:(575) 748-1283 Fax:(575) 748-9720  
**District III**  
1000 Rio Brazos Rd., Aztec, NM 87410  
Phone:(505) 334-6178 Fax:(505) 334-6170  
**District IV**  
1220 S. St Francis Dr., Santa Fe, NM 87505  
Phone:(505) 476-3470 Fax:(505) 476-3462

**State of New Mexico**  
**Energy, Minerals and Natural Resources**  
**Oil Conservation Division**  
**1220 S. St Francis Dr.**  
**Santa Fe, NM 87505**

CONDITIONS  
  
Action 25809

**CONDITIONS OF APPROVAL**

Operator:	LOGOS OPERATING, LLC	2010 Afton Place	Farmington, NM87401	OGRID:	289408	Action Number:	25809	Action Type:	C-107A
OCD Reviewer	Condition								
kpickford	None								