

State of New Mexico
Energy, Minerals and Natural Resources Department

Michelle Lujan-Grisham
Governor

Melanie A. Kenderdine
Cabinet Secretary

Ben Shelton
Deputy Secretary

Erin Taylor
Deputy Secretary

Albert Chang
Division Director
Oil Conservation Division



Paula M. Vance
pmvance@hollandhart.com

Administrative Order NSP – 2297

ADMINISTRATIVE NON-STANDARD HORIZONTAL SPACING UNIT

XTO Permian Operating, LLC [OGRID 373075]

Poker Lake Unit 20 DTD Well No. 311H [API No. 30-015-55081]

Poker Lake Unit 20 DTD Well No. 321H [API No. 30-015-55044]

Poker Lake Unit 20 DTD Well No. 421H [API No. 30-015-55040]

Poker Lake Unit 20 DTD Well No. 422H [API No. 30-015-55010]

Poker Lake Unit 20 DTD Well No. 423H [API No. 30-015-55009]

Entire HSU: E/2 Section 20, E/2 Section 29, E/2 Section 32, T24S, R30E and Lot 1, Lot 2, S/2 NE/4 & E/2 SE/4 Section 5, T25S, R30E, Eddy County, N.M.

Reference is made to your application received on May 28th, 2025.

As submitted, the Horizontal Spacing Unit (HSU) proposed encompasses the three pool/formations. (1) Pool, Wildcat, Lwr Bone Spring (97753), (2) Pool, Wildcat; Bone Spring (97798) & (3) Pool, Pierce Crossing; Bone Spring, East (96473). The entire dedicated acreage for this HSU will be 1199.95 acres. This NSP pertains to the **Wildcat; Bone Spring, (97798)**, only.

The requested approval of a non-standard horizontal spacing unit is as follows:

NSP - 2297
 XTO Permian Operating, LLC
 Page 2 of 2

NSP Horizontal Spacing Unit

Description	Acres	Pool	Pool Code
E/2 Section 29, T24S, R30E	640	Wildcat; Bone Spring	97798
E/2 Section 32, T24S, R30E			

Entire Proposed Horizontal Spacing Unit

Description	Acres	Pool	Pool Code
E/2 Section 20, T24S, R30E	320	Wildcat; Lwr, Bone Spring	97753
E/2 Section 29, T24S, R30E	640	Wildcat; Bone Spring	97798
E/2 Section 32, T24S, R30E			
NE/4, E/2 SE/4 Section 05, T25S, R30E (equivalent)	239.95	Pierce Crossing; Bone Spring, East	96473

Total Horizontal Spacing Unit areage

A = 1199.95 acres

You have requested an exception pursuant to Rule 19.15.16.15(A)(3) NMAC, to approve a non-standard horizontal spacing unit consisting of the entire area described above as the horizontal spacing unit. The proposed horizontal spacing unit does not consist of a quarter - quarter section or equivalent in both sections, as required by Rule 19.15.16.15(B)(1) NMAC.

We understand that you are seeking this exception for an allowance to create a non-standard horizontal spacing unit, comprised of the Proposed Horizontal Spacing Unit referenced above within Eddy County, New Mexico.

The Division understands you have given notice of this application to all operators or owners who are "affected persons," as defined in Paragraph (8) Subsection A of 19.15.2.7 NMAC, in all adjoining units which are to be being included.

You have requested this non-standard horizontal spacing unit in order match the spacing formed by the Poker Lake Unit (PLU) in order to obtain just and fair share of oil & gas within the **Wildcat; Bone Spring (97798)** pool/formation within the referenced spacing unit. Thereby, preventing waste underlying the E/2 Section 29 and the E/2 Section 32, T24S, R30E. This NSP HSU is a subset of the following entire HSU: E/2 Section 20, E/2 Section 29, E/2 Section 32, T24S, R30E and Lot 1, Lot 2, S/2 NE/4 & E/2 SE/4 Section 5, T25S, R30E. It is also understood that portions of this HSU exclude acreages exterior to the PLU that acreage being the W/2 SE/4 section 05, T25S, R30E.

Pursuant to the authority conferred by Division Rule 19.15.16.15(B)(5) NMAC, the above-described **non-standard horizontal spacing unit is hereby approved**. Further, the Applicant may add additional wells to the non-standard spacing unit, the well(s) must be in the same

NSP - 2297
XTO Permian Operating, LLC
Page 3 of 2

horizontal spacing unit and pool/formation. The new well's APD shall reference this NSP order number on Form C-102 with an adjacent letter stating this request.

General Provisions

The above approvals are subject to your being in compliance with all other applicable Division rules, including, but not limited to Division Rule 19.15.5.9 NMAC.

Jurisdiction of this case is retained for the entry of such further orders as the Division may deem necessary.



Albert Chang
Division Director
AC/lrl

Date: 7/25/2025

ID NO. 468240

NSP - 2297

Revised March 23, 2017

RECEIVED: 05/28/25	REVIEWER:	TYPE:	APP NO:
---------------------------	-----------	-------	---------

ABOVE THIS TABLE FOR OCD DIVISION USE ONLY

NEW MEXICO OIL CONSERVATION DIVISION
 - Geological & Engineering Bureau -
 1220 South St. Francis Drive, Santa Fe, NM 87505



ADMINISTRATIVE APPLICATION CHECKLIST

THIS CHECKLIST IS MANDATORY FOR ALL ADMINISTRATIVE APPLICATIONS FOR EXCEPTIONS TO DIVISION RULES AND REGULATIONS WHICH REQUIRE PROCESSING AT THE DIVISION LEVEL IN SANTA FE

Applicant: XTO Permian Operating, LLC **OGRID Number:** 373075
Well Name: Poker Lake Unit 20 DTD Wells **API:** 30-015-various
Pool: WC G-06 S243026M; Bone Spring **Pool Code:** 97798

SUBMIT ACCURATE AND COMPLETE INFORMATION REQUIRED TO PROCESS THE TYPE OF APPLICATION INDICATED BELOW

- 1) **TYPE OF APPLICATION:** Check those which apply for [A]
- A. Location – Spacing Unit – Simultaneous Dedication
 NSL NSP (PROJECT AREA) NSP (PRORATION UNIT) SD
- B. Check one only for [I] or [II]
- [I] Commingling – Storage – Measurement
 DHC CTB PLC PC OLS OLM
- [II] Injection – Disposal – Pressure Increase – Enhanced Oil Recovery
 WFX PMX SWD IPI EOR PPR

- 2) **NOTIFICATION REQUIRED TO:** Check those which apply.
- A. Offset operators or lease holders
 B. Royalty, overriding royalty owners, revenue owners
 C. Application requires published notice
 D. Notification and/or concurrent approval by SLO
 E. Notification and/or concurrent approval by BLM
 F. Surface owner
 G. For all of the above, proof of notification or publication is attached, and/or,
 H. No notice required

FOR OCD ONLY	
<input type="checkbox"/>	Notice Complete
<input type="checkbox"/>	Application Content Complete

3) **CERTIFICATION:** I hereby certify that the information submitted with this application for administrative approval is **accurate** and **complete** to the best of my knowledge. I also understand that **no action** will be taken on this application until the required information and notifications are submitted to the Division.

Note: Statement must be completed by an individual with managerial and/or supervisory capacity.

Paula M. Vance

Print or Type Name

Signature

May 27, 2025
Date

505-988-4421
Phone Number

pmvance@hollandhart.com
e-mail Address



Paula M. Vance
Associate
 Phone (505) 954-7286
 PMVance@hollandhart.com

May 27, 2025

VIA ONLINE FILING

Gerasimos Razatos, Acting Division Director
 Oil Conservation Division
 Energy, Minerals and Natural Resources Department
 1220 South Saint Francis Drive
 Santa Fe, New Mexico 87505

Re: XTO Permian Operating, LLC
Request for Administrative Approval of a Non-Standard Horizontal Spacing Unit

1,199.95-acre non-standard horizontal spacing unit
a portion is in the WC G-06 S243026M; Bone Spring [97798] (E/2 of Sections 29 and 32 T24S-R30E)
 E/2 of Sections 20, 29, and 32 Township 24 South, Range 30 East, and Lots 1-2 and the S/2 NE/4 (NE/4 equivalent) and E/2 SE/4 of Section 5, Township 25 South, Range 30 East, NMPM, Eddy County, New Mexico

Dear Mr. Razatos:

XTO Permian Operating, LLC (“XTO”) (OGRID No. 373075), pursuant to Division Rules 19.15.16.15(B)(5) and 19.15.15.11.B NMAC and applicable rules governing acreage and well spacing requirements for the WC G-06 S243026M; Bone Spring [97798], seeks administrative approval of a non-standard 1,199.95-acre, more or less, horizontal spacing unit comprised of the E/2 of Sections 20, 29, and 32 Township 24 South, Range 30 East, and Lots 1-2 and the S/2 NE/4 (NE/4 equivalent) and E/2 SE/4 of Section 5, Township 25 South, Range 30 East, NMPM, Eddy County, New Mexico. The non-standard spacing unit will be dedicated to the following wells:

- **Poker Lake Unit 20 DTD 311H** (API # 30-015-55081)
- **Poker Lake Unit 20 DTD 321H** (API # 30-015-55044)
- **Poker Lake Unit 20 DTD 421H** (API # 30-015-55040)
- **Poker Lake Unit 20 DTD 422H** (API # 30-015-55010)
- **Poker Lake Unit 20 DTD 423H** (API # 30-015-55009)

T 505.988.4421 F 505.983.6043
 110 North Guadalupe, Suite 1, Santa Fe, NM 87501-1849
 Mail to: P.O. Box 2208, Santa Fe, NM 87504-2208
 www.hollandhart.com

Alaska	Montana	Utah
Colorado	Nevada	Washington, D.C.
Idaho	New Mexico	Wyoming

The Division has placed a portion of the wells into the WC G-06 S243026M; Bone Spring [97798] (E/2 of Sections 29 and 32 T24S-R30E).¹

The formation of this non-standard spacing unit is limited by the outer boundary of the unitized lands encompassing the Poker Lake Unit (“PLU”), which has less than the minimum acreage required by 19.15.15.10 NMAC. Thus, approval is necessary to match the spacing formed by the PLU so XTO can obtain its just and fair share of the oil and gas underlying the subject unitized lands, avoid the drilling of unnecessary wells, prevent waste, and protect correlative rights.

Exhibit A is a plat showing the proposed non-standard horizontal spacing unit, including the subject Federal leases comprising XTO’s Poker Lake Unit. Exhibit A also shows the affected offset acreage for the proposed non-standard horizontal spacing unit. The affected offset acreage comprises the W/2 SE/4 of Section 5, Township 25 South, Range 30 East.

Exhibit B is comprised of a Form C-102 for each of the wells within the proposed non-standard spacing unit. The C-102s included are specific for the pool involved with this application, which is the WC G-06 S243026M; Bone Spring [97798].

Exhibit C is a spreadsheet listing all “affected persons”² in the affected offset acreage to be noticed. Exhibit C also includes tracking information demonstrating that each of the affected persons was sent a copy of this application with all attachments by certified mail advising that any objections must be filed in writing with the Division within 20 days from the date the Division receives the application. A copy of this application has been provided to the State Land Office since state lands are involved.

Your attention to this matter is appreciated.

Sincerely,



Paula M. Vance
ATTORNEY FOR
XTO PERMIAN OPERATING, LLC


¹ This application is specific for the pool indicated; separate applications are being filed for the other pools involved with XTO’s proposed non-standard spacing unit.

² See NMAC §§ 19.15.2.7.A(8) [defining “affected persons” as, “in the absence of an operator, or with respect to an application wherein the operator of the spacing unit or identified tract is the applicant, each working interest owner”] and 19.15.4.12.A(2)(a).





PLU 20 DOG TOWN DRAW NON-STANDARD SPACING UNIT


SEC 20: E/2, SEC 29: E/2, SEC 32: E/2 IN 24S-30E
SEC 5: NE/4, E/2 SE/4 IN 25S-30E

 PROPOSED NON-STANDARD SPACING UNIT

 NOTIFICATION AREA

 UNCOMMITTED ACREAGE
Operator: XTO Permian
WI Owner: XTO Delaware, Chevron, Civitas
Type: Fee Acreage

 COMMITTED ACREAGE
Operator: XTO Permian
WI Owner: XTO Delaware, Chevron
Type: Fee, Federal, State Acreage

 **Operator:** XTO Permian
WI Owner: XTO Holdings
Type: State Acreage


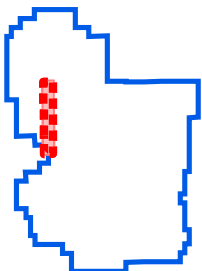
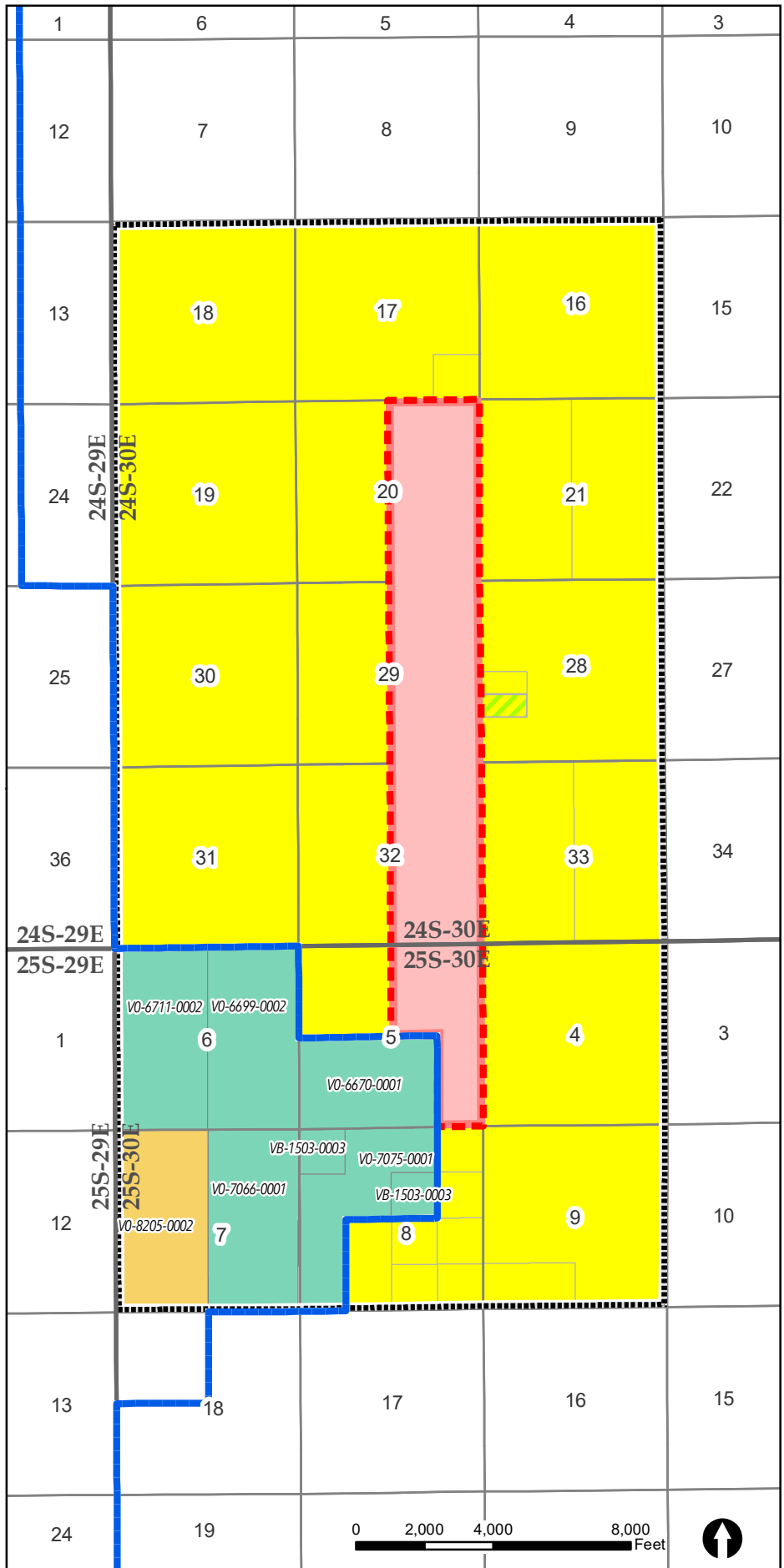
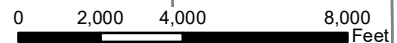
 **Operator:** COG Operating
WI Owner: COG, Concho Oil, Conoco Phillips
Type: State Acreage

EXHIBIT
A



POKER LAKE UNIT

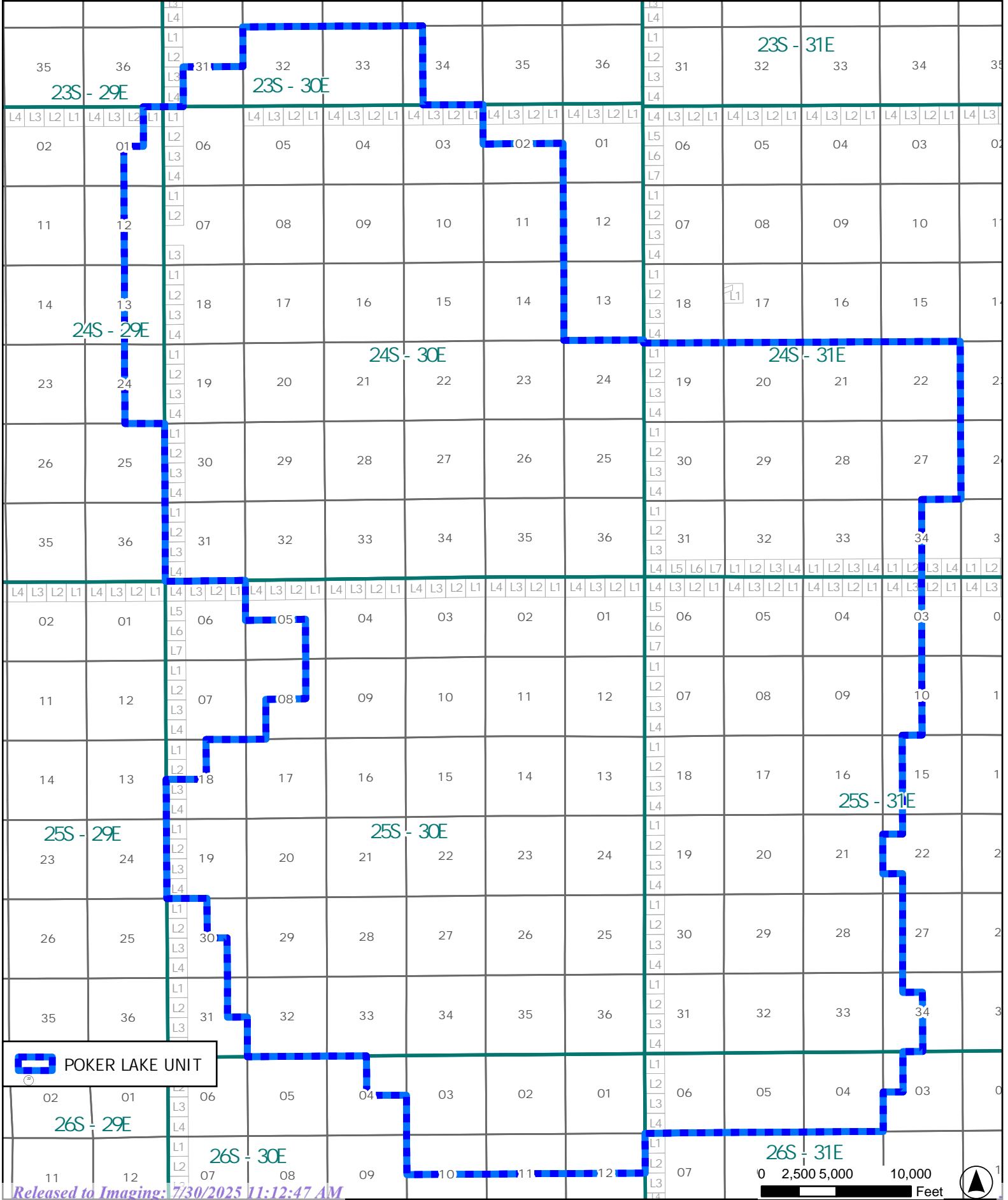




POKER LAKE UNIT EDDY COUNTY, NEW MEXICO

Land GIS Dept. O:\review\Projects\Kellin_Project_APRX\Delaware Federal Unit\PODs\Delaware Federal Unit\PODs.aprx Layout PLU LEASES

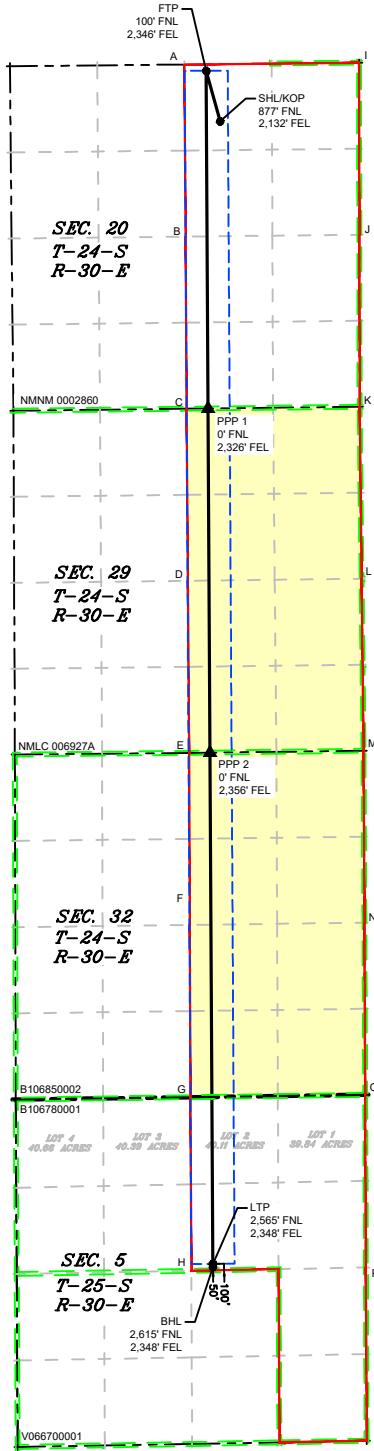
Date: 5/22/2025



ACREAGE DEDICATION PLATS

This grid represents a standard section. You may superimpose a non-standard section, or larger area, over this grid. Operators must outline the dedicated areage in a red box, clearly show the well surface location and bottom hole location, if it is directionally drilled, with the dimensions from the section lines in the cardinal directions. If this is a horizontal wellbore show on this plat the location of the First Take Point and Last Take Point, and the point within the completed interval (other than the First Take Point or Last Take Point) that is closest to any outer boundary of the tract.

Surveyors shall use the latest United States government survey or dependent resurvey. Well Locations will be in reference to the New Mexico Principal Meridian. If the land is not surveyed, contact the OCD Engineering Bureau. Independent subdivision surveys will not be accepted.



LEGEND

- SECTION LINE
- 330' BUFFER
- TOWNSHIP LINE
- MINERAL LEASE
- WELL ALLOCATION AREA
- WELL BORE
- ▲ PPP
- WELL
- POOL ALLOCATION AREA

WELL COORDINATE TABLE								
WELL	NAD 83 NME X	NAD 83 NME Y	NAD 83 LAT	NAD 83 LON	NAD 27 NME X	NAD 27 NME Y	NAD 27 LAT	NAD 27 LON
SHL/KOP	674,810.8	439,675.0	32.208007	-103.901782	633,627.1	439,615.7	32.207882	-103.901295
FTP	674,595.6	440,449.8	32.210139	-103.902468	633,411.9	440,390.5	32.210015	-103.901981
LTP	674,699.2	422,120.0	32.159752	-103.902371	633,514.9	422,061.2	32.159628	-103.901885
BHL	674,699.4	422,070.0	32.159615	-103.902370	633,515.2	422,011.2	32.159490	-103.901885
PPP 1	674,624.9	435,261.4	32.195877	-103.902441	633,441.0	435,202.3	32.195752	-103.901954
PPP 2	674,654.8	429,974.1	32.181342	-103.902412	633,470.8	429,915.0	32.181218	-103.901926

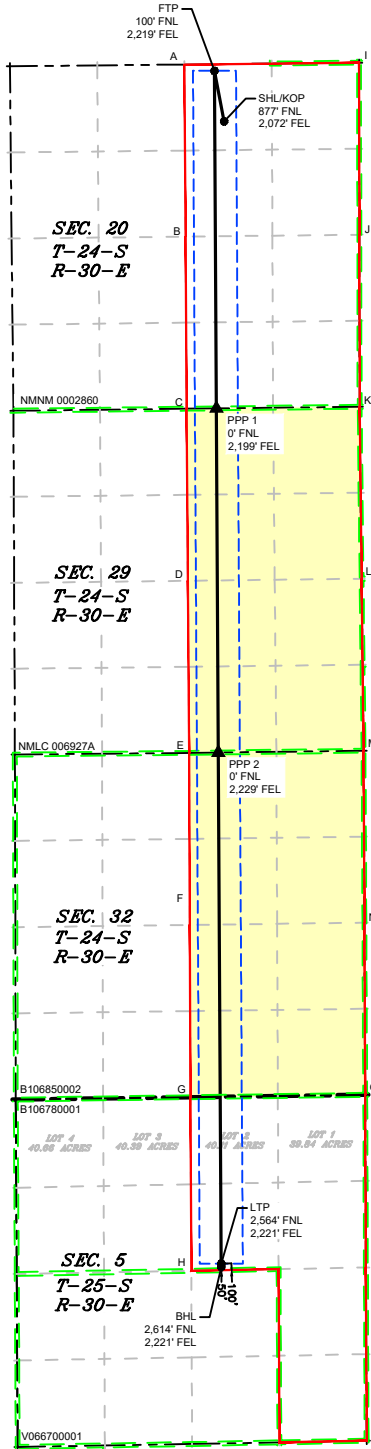
CORNER COORDINATE TABLE				
CORNER	NAD 83 NME X	NAD 83 NME Y	NAD 27 NME X	NAD 27 NME Y
A	674,262.0	440,546.3	633,078.3	440,487.0
B	674,277.3	437,901.7	633,093.6	437,842.5
C	674,292.7	435,257.6	633,108.8	435,198.5
D	674,313.5	432,613.8	633,129.5	432,554.7
E	674,334.3	429,970.0	633,150.3	429,910.9
F	674,344.5	427,326.7	633,160.4	427,267.8
G	674,354.7	424,680.7	633,170.5	424,621.8
H	674,366.8	422,013.8	633,182.5	421,955.0
I	676,941.2	440,574.0	635,757.5	440,514.8
J	676,946.1	437,930.7	635,762.3	437,871.4
K	676,950.6	435,288.0	635,766.7	435,228.8
L	676,980.3	432,645.3	635,796.4	432,586.2
M	677,010.4	430,004.1	635,826.3	429,945.1
N	677,023.8	427,361.7	635,839.7	427,302.8
O	677,036.7	424,716.9	635,852.5	424,658.0
P	677,047.1	422,064.2	635,862.8	422,005.4

G:\618.013 XTO Energy - NM\003 Poker Lake Unit\06 - PLU 20 DTD - EDDY\Wells\47 - 311H\DWG\311H C-102.dwg
 POKER LAKE UNIT 20 DTD 311H
 Released to Imaging: 7/30/2025 11:12:47 AM

ACREAGE DEDICATION PLATS

This grid represents a standard section. You may superimpose a non-standard section, or larger area, over this grid. Operators must outline the dedicated areage in a red box, clearly show the well surface location and bottom hole location, if it is directionally drilled, with the dimensions from the section lines in the cardinal directions. If this is a horizontal wellbore show on this plat the location of the First Take Point and Last Take Point, and the point within the completed interval (other than the First Take Point or Last Take Point) that is closest to any outer boundary of the tract.

Surveyors shall use the latest United States government survey or dependent resurvey. Well Locations will be in reference to the New Mexico Principal Meridian. If the land is not surveyed, contact the OCD Engineering Bureau. Independent subdivision surveys will not be accepted.



LEGEND

- SECTION LINE
- TOWNSHIP LINE
- WELL ALLOCATION AREA
- 330' BUFFER
- MINERAL LEASE
- WELL BORE
- PPP
- WELL
- POOL ALLOCATION AREA

WELL COORDINATE TABLE								
WELL	NAD 83 NME X	NAD 83 NME Y	NAD 83 LAT	NAD 83 LON	NAD 27 NME X	NAD 27 NME Y	NAD 27 LAT	NAD 27 LON
SHL/KOP	674,870.6	439,676.0	32.208009	-103.901589	633,686.9	439,616.7	32.207885	-103.901102
FTP	674,722.6	440,451.1	32.210141	-103.902058	633,538.9	440,391.8	32.210017	-103.901570
LTP	674,826.4	422,122.4	32.159757	-103.901960	633,641.9	422,063.6	32.159633	-103.901475
BHL	674,826.4	422,072.4	32.159620	-103.901960	633,642.1	422,013.6	32.159495	-103.901475
PPP 1	674,751.9	435,262.9	32.195879	-103.902030	633,568.0	435,203.7	32.195755	-103.901543
PPP 2	674,781.8	429,975.7	32.181345	-103.902002	633,597.7	429,916.7	32.181221	-103.901516

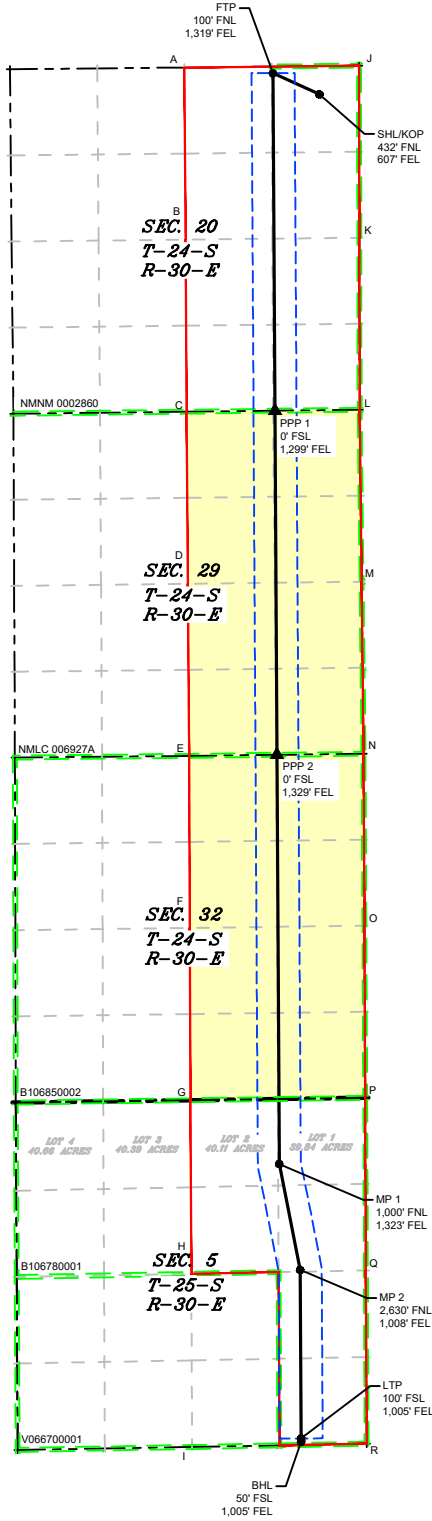
CORNER COORDINATE TABLE				
CORNER	NAD 83 NME X	NAD 83 NME Y	NAD 27 NME X	NAD 27 NME Y
A	674,262.0	440,546.3	633,078.3	440,487.0
B	674,277.3	437,901.7	633,093.6	437,842.5
C	674,292.7	435,257.6	633,108.8	435,198.5
D	674,313.5	432,613.8	633,129.5	432,554.7
E	674,334.3	429,970.0	633,150.3	429,910.9
F	674,344.5	427,326.7	633,160.4	427,267.8
G	674,354.7	424,680.7	633,170.5	424,621.8
H	674,366.8	422,013.8	633,182.5	421,955.0
I	676,941.2	440,574.0	635,757.5	440,514.8
J	676,946.1	437,930.7	635,762.3	437,871.4
K	676,950.6	435,288.0	635,766.7	435,228.8
L	676,980.3	432,645.3	635,796.4	432,586.2
M	677,010.4	430,004.1	635,826.3	429,945.1
N	677,023.8	427,361.7	635,839.7	427,302.8
O	677,036.7	424,716.9	635,852.5	424,658.0
P	677,047.1	422,064.2	635,862.8	422,005.4

D:\618.013 XTO Energy - NM\003 Poker Lake Unit\06 - PLU 20 DTD - EDD\Wells\49 - 321H\DWG\321H C-102.dwg

ACREAGE DEDICATION PLATS

This grid represents a standard section. You may superimpose a non-standard section, or larger area, over this grid. Operators must outline the dedicated areage in a red box, clearly show the well surface location and bottom hole location, if it is directionally drilled, with the dimensions from the section lines in the cardinal directions. If this is a horizontal wellbore show on this plat the location of the First Take Point and Last Take Point, and the point within the completed interval (other than the First Take Point or Last Take Point) that is closest to any outer boundary of the tract.

Surveyors shall use the latest United States government survey or dependent resurvey. Well Locations will be in reference to the New Mexico Principal Meridian. If the land is not surveyed, contact the OCD Engineering Bureau. Independent subdivision surveys will not be accepted.



LEGEND

- SECTION LINE
- TOWNSHIP LINE
- WELL ALLOCATION AREA
- 330' BUFFER
- MINERAL LEASE
- WELL BORE
- ▲ PPP
- WELL
- POOL ALLOCATION AREA

WELL COORDINATE TABLE								
WELL	NAD 83 NME X	NAD 83 NME Y	NAD 83 LAT	NAD 83 LON	NAD 27 NME X	NAD 27 NME Y	NAD 27 LAT	NAD 27 LON
SHL/KOP	676,335.4	440,135.9	32.209257	-103.896847	635,151.7	440,076.6	32.209133	-103.896360
FTP	675,622.5	440,460.4	32.210157	-103.899148	634,438.8	440,401.1	32.210032	-103.898660
LTP	676,053.3	419,483.2	32.152489	-103.898029	634,868.9	419,424.5	32.152364	-103.897544
BHL	676,053.6	419,433.2	32.152352	-103.898029	634,869.2	419,374.5	32.152227	-103.897544
MP 1	675,717.7	423,698.9	32.164081	-103.899059	634,533.4	423,640.0	32.163956	-103.898574
MP 2	676,038.8	422,073.1	32.159609	-103.898042	634,854.5	422,014.3	32.159484	-103.897557
PPP 1	675,652.0	435,273.2	32.195898	-103.899120	634,468.1	435,214.0	32.195773	-103.898634
PPP 2	675,682.0	429,987.2	32.181367	-103.899092	634,497.9	429,928.2	32.181242	-103.898606

CORNER COORDINATE TABLE				
CORNER	NAD 83 NME X	NAD 83 NME Y	NAD 27 NME X	NAD 27 NME Y
A	674,262.0	440,546.3	633,078.3	440,487.0
B	674,277.3	437,901.7	633,093.6	437,842.5
C	674,292.7	435,257.6	633,108.8	435,198.5
D	674,313.5	432,613.8	633,129.5	432,554.7
E	674,334.3	429,970.0	633,150.3	429,910.9
F	674,344.5	427,326.7	633,160.4	427,267.8
G	674,354.7	424,680.7	633,170.5	424,621.8
H	674,366.8	422,013.8	633,182.5	421,955.0
I	674,378.8	419,352.4	633,194.4	419,293.6
J	676,941.2	440,574.0	635,757.5	440,514.8
K	676,946.1	437,930.7	635,762.3	437,871.4
L	676,950.6	435,288.0	635,766.7	435,228.8
M	676,980.3	432,645.3	635,796.4	432,586.2
N	677,010.4	430,004.1	635,826.3	429,945.1
O	677,023.8	427,361.7	635,839.7	427,302.8
P	677,036.7	424,716.9	635,852.5	424,658.0
Q	677,047.1	422,064.2	635,862.8	422,005.4

N:\003 POKER Lake Unit\06 - PLU 20 DTD - EDD\Wells\53 - 421H\DWG\421H C-102.dwg
 \618.013 XTO Energy - NM\003 POKER Lake Unit\06 - PLU 20 DTD - EDD\Wells\53 - 421H\DWG\421H C-102.dwg
 POKER LAKE UNIT 20 DTD 421H

Santa Fe Main Office Phone: (505) 476-3441 General Information Phone: (505) 629-6116 Online Phone Directory Visit: https://www.emnrd.nm.gov/ocd/contact-us/	State of New Mexico Energy, Minerals & Natural Resources Department OIL CONSERVATION DIVISION	C-102 Revised July 9, 2024 Submit Electronically via OCD Permitting
		Submittal Type: <input type="checkbox"/> Initial Submittal <input checked="" type="checkbox"/> Amended Report <input type="checkbox"/> As Drilled

WELL LOCATION INFORMATION

API Number 30-015-55010	Pool Code 97798	Pool Name WILDCAT G-06 S243026M;BONE SPRING
Property Code	Property Name POKER LAKE UNIT 20 DTD	Well Number 422H
OGRID No. 373075	Operator Name XTO PERMIAN OPERATING, LLC.	Ground Level Elevation 3295'
Surface Owner: <input type="checkbox"/> State <input type="checkbox"/> Fee <input type="checkbox"/> Tribal <input checked="" type="checkbox"/> Federal		Mineral Owner: <input checked="" type="checkbox"/> State <input type="checkbox"/> Fee <input type="checkbox"/> Tribal <input checked="" type="checkbox"/> Federal

Surface Location

UL	Section	Township	Range	Lot	Ft. from N/S	Ft. from E/W	Latitude	Longitude	County
A	20	24S	30E		432 FNL	577 FEL	32.209257	-103.896750	EDDY

Bottom Hole Location

UL	Section	Township	Range	Lot	Ft. from N/S	Ft. from E/W	Latitude	Longitude	County
P	05	25S	30E		50 FSL	1,005 FEL	32.152352	-103.898029	EDDY

Dedicated Acres 640.00	Infill or Defining Well INFILL	Defining Well API 30-015-55040	Overlapping Spacing Unit (Y/N) N	Consolidation Code U
Order Numbers:			Well setbacks are under Common Ownership: <input checked="" type="checkbox"/> Yes <input type="checkbox"/> No	

Kick Off Point (KOP)

UL	Section	Township	Range	Lot	Ft. from N/S	Ft. from E/W	Latitude	Longitude	County
A	20	24S	30E		432 FNL	577 FEL	32.209257	-103.896750	EDDY

First Take Point (FTP)

UL	Section	Township	Range	Lot	Ft. from N/S	Ft. from E/W	Latitude	Longitude	County
A	20	24S	30E		100 FNL	1,006 FEL	32.210162	-103.898136	EDDY

Last Take Point (LTP)

UL	Section	Township	Range	Lot	Ft. from N/S	Ft. from E/W	Latitude	Longitude	County
P	05	25S	30E		100 FSL	1,005 FEL	32.152489	-103.898029	EDDY

Unitized Area or Area of Uniform Interest NMNM105422429	Spacing Unit Type <input checked="" type="checkbox"/> Horizontal <input type="checkbox"/> Vertical	Ground Floor Elevation: 3295'
---	--	---

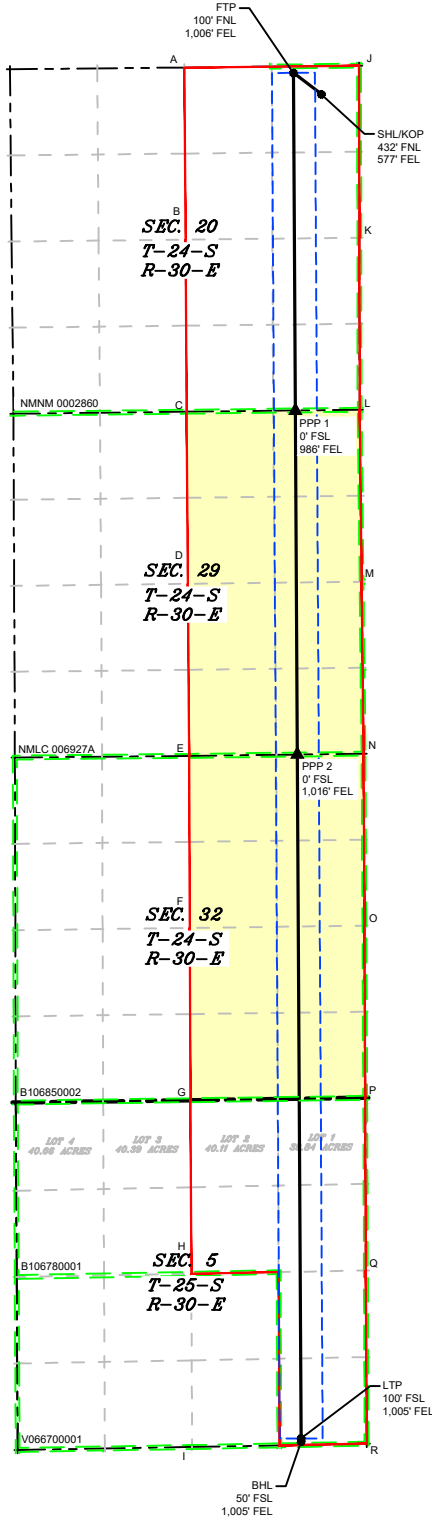
<p>OPERATOR CERTIFICATIONS</p> <p><i>I hereby certify that the information contained herein is true and complete to the best of my knowledge and belief, and, if the well is a vertical or directional well, that this organization either owns a working interest or unleased mineral interest in the land including the proposed bottom hole location or has a right to drill this well at this location pursuant to a contract with an owner of a working interest or unleased mineral interest, or to a voluntary pooling agreement or a compulsory pooling order heretofore entered by the division.</i></p> <p><i>If this well is a horizontal well, I further certify that this organization has received the consent of at least one lessee or owner of a working interest or unleased mineral interest in each tract (in the target pool or formation) in which any part of the well's completed interval will be located or obtained a compulsory pooling order from the division.</i></p> <p><i>Samantha Weis</i> 5/15/2025 Signature Date</p> <p>Samantha Weis Printed Name</p> <p>samantha.r.bartnik@exxonmobil.com Email Address</p>	<p>SURVEYOR CERTIFICATIONS</p> <p><i>I hereby certify that the well location shown on this plat was plotted from field notes of actual surveys made by me or under my supervision, and that the same is true and correct to the best of my belief.</i></p> <div style="text-align: right;">  </div> <p><i>[Signature]</i> Signature and Seal of Professional Surveyor</p> <p>23786 05-14-2025 Certificate Number Date of Survey</p>
DN 618.013003.06-54	

Note: No allowable will be assigned to this completion until all interests have been consolidated or a non-standard unit has been approved by the division.

ACREAGE DEDICATION PLATS

This grid represents a standard section. You may superimpose a non-standard section, or larger area, over this grid. Operators must outline the dedicated areage in a red box, clearly show the well surface location and bottom hole location, if it is directionally drilled, with the dimensions from the section lines in the cardinal directions. If this is a horizontal wellbore show on this plat the location of the First Take Point and Last Take Point, and the point within the completed interval (other than the First Take Point or Last Take Point) that is closest to any outer boundary of the tract.

Surveyors shall use the latest United States government survey or dependent resurvey. Well Locations will be in reference to the New Mexico Principal Meridian. If the land is not surveyed, contact the OCD Engineering Bureau. Independent subdivision surveys will not be accepted.



LEGEND

- SECTION LINE
- TOWNSHIP LINE
- WELL ALLOCATION AREA
- 330' BUFFER
- MINERAL LEASE
- WELL BORE
- ▲ PPP
- WELL
- POOL ALLOCATION AREA

WELL COORDINATE TABLE								
WELL	NAD 83 NME X	NAD 83 NME Y	NAD 83 LAT	NAD 83 LON	NAD 27 NME X	NAD 27 NME Y	NAD 27 LAT	NAD 27 LON
SHL/KOP	676,365.4	440,136.0	32.209257	-103.896750	635,181.7	440,076.7	32.209133	-103.896263
FTP	675,935.5	440,463.6	32.210162	-103.898136	634,751.8	440,404.3	32.210038	-103.897648
LTP	676,053.3	419,483.2	32.152489	-103.898029	634,868.9	419,424.5	32.152364	-103.897544
BHL	676,053.6	419,433.2	32.152352	-103.898029	634,869.2	419,374.5	32.152227	-103.897544
PPP 1	675,964.6	435,276.7	32.195904	-103.898109	634,780.8	435,217.6	32.195780	-103.897623
PPP 2	675,994.3	429,991.2	32.181375	-103.898083	634,810.3	429,932.1	32.181250	-103.897597

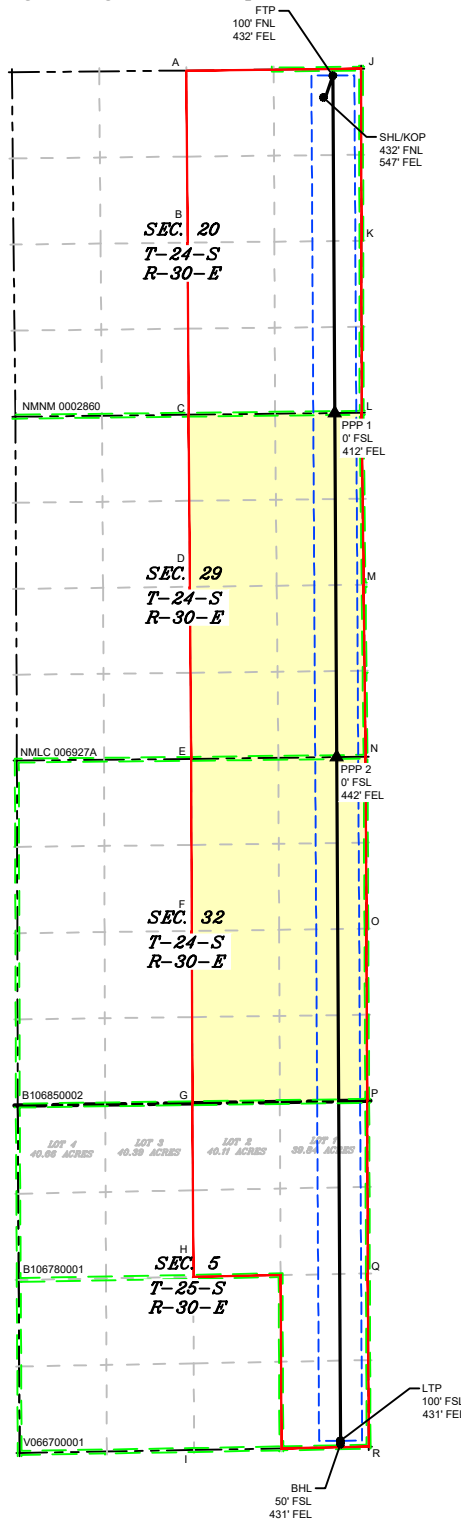
CORNER COORDINATE TABLE				
CORNER	NAD 83 NME X	NAD 83 NME Y	NAD 27 NME X	NAD 27 NME Y
A	674,262.0	440,546.3	633,078.3	440,487.0
B	674,277.3	437,901.7	633,093.6	437,842.5
C	674,292.7	435,257.6	633,108.8	435,198.5
D	674,313.5	432,613.8	633,129.5	432,554.7
E	674,334.3	429,970.0	633,150.3	429,910.9
F	674,344.5	427,326.7	633,160.4	427,267.8
G	674,354.7	424,680.7	633,170.5	424,621.8
H	674,366.8	422,013.8	633,182.5	421,955.0
I	674,378.8	419,352.4	633,194.4	419,293.6
J	676,941.2	440,574.0	635,757.5	440,514.8
K	676,946.1	437,930.7	635,762.3	437,871.4
L	676,950.6	435,288.0	635,766.7	435,228.8
M	676,980.3	432,645.3	635,796.4	432,586.2
N	677,010.4	430,004.1	635,826.3	429,945.1
O	677,023.8	427,361.7	635,839.7	427,302.8
P	677,036.7	424,716.9	635,852.5	424,658.0
Q	677,047.1	422,064.2	635,862.8	422,005.4

P:\618.013 XTO Energy - NM\003 Poker Lake Unit\06 - PLU 20 DTD - EDD\Wells\54 - 422H\DWG\422H C-102.dwg

ACREAGE DEDICATION PLATS

This grid represents a standard section. You may superimpose a non-standard section, or larger area, over this grid. Operators must outline the dedicated areage in a red box, clearly show the well surface location and bottom hole location, if it is directionally drilled, with the dimensions from the section lines in the cardinal directions. If this is a horizontal wellbore show on this plat the location of the First Take Point and Last Take Point, and the point within the completed interval (other than the First Take Point or Last Take Point) that is closest to any outer boundary of the tract.

Surveyors shall use the latest United States government survey or dependent resurvey. Well Locations will be in reference to the New Mexico Principal Meridian. If the land is not surveyed, contact the OCD Engineering Bureau. Independent subdivision surveys will not be accepted.



LEGEND

- SECTION LINE
- 330' BUFFER
- TOWNSHIP LINE
- MINERAL LEASE
- WELL ALLOCATION AREA
- WELL BORE
- ▲ PPP
- WELL
- POOL ALLOCATION AREA

WELL COORDINATE TABLE								
WELL	NAD 83 NME X	NAD 83 NME Y	NAD 83 LAT	NAD 83 LON	NAD 27 NME X	NAD 27 NME Y	NAD 27 LAT	NAD 27 LON
SHL/KOP	676,395.4	440,136.5	32.209258	-103.896653	635,321.7	440,077.2	32.209134	-103.896166
FTP	676,509.5	440,469.6	32.210172	-103.896280	635,325.8	440,410.3	32.210048	-103.895793
LTP	676,627.3	419,493.9	32.152512	-103.896175	635,442.9	419,435.2	32.152387	-103.895690
BHL	676,627.5	419,443.9	32.152375	-103.896174	635,443.1	419,385.2	32.152250	-103.895690
PPP 1	676,538.6	435,283.3	32.195916	-103.896254	635,354.7	435,224.1	32.195791	-103.895767
PPP 2	676,568.3	429,998.5	32.181388	-103.896227	635,384.2	429,939.5	32.181264	-103.895741

CORNER COORDINATE TABLE				
CORNER	NAD 83 NME X	NAD 83 NME Y	NAD 27 NME X	NAD 27 NME Y
A	674,262.0	440,546.3	633,078.3	440,487.0
B	674,277.3	437,901.7	633,093.6	437,842.5
C	674,292.7	435,257.6	633,108.8	435,198.5
D	674,313.5	432,613.8	633,129.5	432,554.7
E	674,334.3	429,970.0	633,150.3	429,910.9
F	674,344.5	427,326.7	633,160.4	427,267.8
G	674,354.7	424,680.7	633,170.5	424,621.8
H	674,366.8	422,013.8	633,182.5	421,955.0
I	674,378.8	419,352.4	633,194.4	419,293.6
J	676,941.2	440,574.0	635,757.5	440,514.8
K	676,946.1	437,930.7	635,762.3	437,871.4
L	676,950.6	435,288.0	635,766.7	435,228.8
M	676,980.3	432,645.3	635,796.4	432,586.2
N	677,010.4	430,004.1	635,826.3	429,945.1
O	677,023.8	427,361.7	635,839.7	427,302.8
P	677,036.7	424,716.9	635,852.5	424,658.0
Q	677,047.1	422,064.2	635,862.8	422,005.4

G:\618.013 XTO Energy - NM\003 Poker Lake Unit\06 - PLU 20 DTD - EDD\Wells\55 - 423H\DWG\423H C-102.dwg
 POKER LAKE UNIT 20 DTD 423H
 Released to Imaging: 7/30/2025 11:12:47 AM

COG Operating LLC, Concho Oil & Gas LLC, ConocoPhillips Company
New Mexico State Land Office

600 W. Illinois Ave.
310 Old Santa Fe Trail

Midland TX
Santa Fe NM

79701
87501

EXHIBIT
C



Paula M. Vance
Associate
Phone (505) 954-7286
PMVance@hollandhart.com

May 22, 2025

VIA CERTIFIED MAIL
RETURN RECEIPT REQUESTED

TO: ALL AFFECTED PERSONS

Re: XTO Permian Operating, LLC
Request for Administrative Approval of a Non-Standard Horizontal Spacing Unit

1,199.95-acre non-standard horizontal spacing unit
a portion is in the WC G-06 S243026M; Bone Spring [97798] (E/2 of Sections 29 and 32 T24S-R30E)
E/2 of Sections 20, 29, and 32 Township 24 South, Range 30 East, and Lots 1-2 and the S/2 NE/4 (NE/4 equivalent) and E/2 SE/4 of Section 5, Township 25 South, Range 30 East, NMPM, Eddy County, New Mexico

Ladies and Gentlemen:

Enclosed is a copy of the above-referenced application which was filed with the New Mexico Oil Conservation Division on this date. Any objection to this application must be filed in writing within twenty days from the date this application is received by the New Mexico Oil Conservation Division, 1220 South St. Francis Drive, Santa Fe, New Mexico, 87505. If no objection is received within this twenty-day period, this application may be approved administratively by the Division.

If you have any questions about this application, please contact the following:

Corie Matthews, CPL
XTO Energy Inc.
(346) 335-5864
corie.a.mathews@exxonmobil.com

Sincerely,

Paula M. Vance
ATTORNEY FOR
XTO PERMIAN OPERATING, LLC

XTO - PLU Dog Town Draw NSL's
Postal Delivery Report

9402811898765447443396	COG Operating LLC, Concho Oil & Gas LLC, ConocoPhillips Company	600 W Illinois Ave	Midland	TX	79701-4882	Your item arrived at the hub at 6:42 am on May 25, 2025 in MIDLAND, TX 79701.
9402811898765447443341	New Mexico State Land Office	310 Old Santa Fe Trl	Santa Fe	NM	87501-2708	We were unable to deliver your package at 9:09 am on May 24, 2025 in SANTA FE, NM 87501 because the business was closed. We will redeliver on the next business day. No action needed.

Sante Fe Main Office
Phone: (505) 476-3441

General Information
Phone: (505) 629-6116

Online Phone Directory
<https://www.emnrd.nm.gov/ocd/contact-us>

State of New Mexico
Energy, Minerals and Natural Resources
Oil Conservation Division
1220 S. St Francis Dr.
Santa Fe, NM 87505

CONDITIONS

Action 468240

CONDITIONS

Operator: XTO PERMIAN OPERATING LLC. 6401 HOLIDAY HILL ROAD MIDLAND, TX 79707	OGRID: 373075
	Action Number: 468240
	Action Type: [UF-NSP] Non-Standard Proration (NSP)

CONDITIONS

Created By	Condition	Condition Date
llowe	None	6/3/2025