

State of New Mexico
Energy, Minerals and Natural Resources Department

Michelle Lujan-Grisham
Governor

Erin Taylor
Acting Cabinet Secretary

Ben Shelton
Deputy Secretary

Albert C. S. Chang
Division Director
Oil Conservation Division



Jacob L. Everhart
jeverhart@bwenergyllaw.com

Administrative Order NSP – 2345

ADMINISTRATIVE NON-STANDARD HORIZONTAL SPACING UNIT

XTO Permian Operating, LLC [OGRID 373075]
20 - Nash Federal Unit Wells (API NO. 30-015-PENDING)
As identified within the application
HSU: All Section 11, 12, 13, 14, T23S R29E, Eddy County
Pool: Purple Sage; Wolfcamp (98220)

Reference is made to your application received on December 4th, 2025.

You have requested approval of a non-standard horizontal spacing unit to be included in your proposed horizontal spacing unit, as follows:

Proposed Increased Horizontal Spacing Unit:

Description	Acres	Pool	Pool Code
Section 11	2560	Purple Sage; Wolfcamp	98220
Section 12			
Section 13			
Section 14			

NSP - 2345
XTO Permian Operating, LLC
Page 2 of 2

The proposed horizontal spacing unit does not consist of a quarter section or equivalent in the described Sections, as required by Rule 19.15.16.15(B)(3) NMAC. A request for a non-standard spacing unit per 19.15.16.15.(B)(3)(4) NMAC has been submitted. The request to deviate from standard has met all requirements of (7) of R - 14262 and 19.15.16.15 (B)(3)(5) NMAC. It is understood that you are seeking this exception in order to create a non-standard horizontal spacing unit, comprised of the Proposed Horizontal Spacing Unit referenced above.

The request includes completion of this horizontal well as a gas well described above in the referenced pool or formation. This well is governed by special rules, R - 14262, for the Purple Sage; Wolfcamp (Gas) Pool and provides for 320-acres, comprising any two contiguous quarter sections of a single governmental section.

The Division understands you have given notice of this application to all operators or owners who are "affected persons," as defined in Paragraph (8) Subsection A of 19.15.2.7 NMAC, in all adjoining units which are to be being included.

You have requested this non-standard horizontal spacing unit in order efficiently locate surface facilities, well pads and central tank batteries. In all reducing disturbance impacts, reducing emissions, consolidating roads/pipelines, and reducing traffic thus protecting the correlative rights within the Wolfcamp formation. Thus, preventing waste underlying all of Section 11, Section 12, Section 13 and Section 14 within the referenced Horizontal Spacing Unit.

Pursuant to the authority conferred by Division Rule 19.15.16.15(B)(5) NMAC, the above-described **non-standard horizontal spacing unit is hereby approved**. Further, the Applicant may add additional wells to the non-standard spacing unit, the well(s) must be in the same horizontal spacing unit and pool/formation. The new well's APD shall reference this NSP order number on Form C-102 with an adjacent letter stating this request.

General Provisions

The above approvals are subject to your being in compliance with all other applicable Division rules, including, but not limited to Division Rule 19.15.5.9 NMAC.

Jurisdiction of this case is retained for the entry of such further orders as the Division may deem necessary.



Albert C.S. Chang
Division Director
AC/lrl

Date: 1/19/2026

Revised March 23, 2017

ID NO. 532041

NSP - 2345

RECEIVED: 12/04/25	REVIEWER:	TYPE:	APP NO:
--------------------	-----------	-------	---------

ABOVE THIS TABLE FOR OCD DIVISION USE ONLY

NEW MEXICO OIL CONSERVATION DIVISION
 - Geological & Engineering Bureau -
 1220 South St. Francis Drive, Santa Fe, NM 87505

**ADMINISTRATIVE APPLICATION CHECKLIST**

THIS CHECKLIST IS MANDATORY FOR ALL ADMINISTRATIVE APPLICATIONS FOR EXCEPTIONS TO DIVISION RULES AND REGULATIONS WHICH REQUIRE PROCESSING AT THE DIVISION LEVEL IN SANTA FE

Applicant: XTO Permian Operating, LLC **OGRID Number:** 373075
Well Name: Nash Fed Unit Wells - Various **API:** Multiple - See Attached C-102
Pool: Purple Sage; Wolfcamp (Gas) **Pool Code:** 98220

SUBMIT ACCURATE AND COMPLETE INFORMATION REQUIRED TO PROCESS THE TYPE OF APPLICATION INDICATED BELOW

- 1) **TYPE OF APPLICATION:** Check those which apply for [A]
- A. Location – Spacing Unit – Simultaneous Dedication
☐ NSL ☐ NSP (PROJECT AREA) ☒ NSP (PRORATION UNIT) ☐ SD
- B. Check one only for [I] or [II]
- [I] Commingling – Storage – Measurement
☐ DHC ☐ CTB ☐ PLC ☐ PC ☐ OLS ☐ OLM
- [II] Injection – Disposal – Pressure Increase – Enhanced Oil Recovery
☐ WFX ☐ PMX ☐ SWD ☐ IPI ☐ EOR ☐ PPR
- 2) **NOTIFICATION REQUIRED TO:** Check those which apply.
- A. ☒ Offset operators or lease holders
 B. ☐ Royalty, overriding royalty owners, revenue owners
 C. ☐ Application requires published notice
 D. ☒ Notification and/or concurrent approval by SLO
 E. ☒ Notification and/or concurrent approval by BLM
 F. ☐ Surface owner
 G. ☒ For all of the above, proof of notification or publication is attached, and/or,
 H. ☐ No notice required

FOR OCD ONLY

- ☐ Notice Complete
- ☐ Application Content Complete

- 3) **CERTIFICATION:** I hereby certify that the information submitted with this application for administrative approval is **accurate** and **complete** to the best of my knowledge. I also understand that **no action** will be taken on this application until the required information and notifications are submitted to the Division.

Note: Statement must be completed by an individual with managerial and/or supervisory capacity.

Jacob L. Everhart

Print or Type Name

Jacob L. Everhart

Signature

12/4/2025

Date

(505) 999 - 0401

Phone Number

jeverhart@bwenergyllaw.com

e-mail Address

BEATTY & WOZNIAK, P.C.

ATTORNEYS AT LAW

1675 BROADWAY, SUITE 600
DENVER, COLORADO 80202
TELEPHONE 303-407-4499
FAX 1-800-886-6566
www.bwenergylaw.com

OFFICE LOCATIONS

COLORADO

NEW MEXICO

WYOMING

MIGUEL A. SUAZO
ALSO ADMITTED IN TX, COJACOB L. EVERHART
ALSO ADMITTED IN CO, ND, & UT

December 4, 2025

VIA ONLINE FILINGAlbert Chang
Division Director
Oil Conservation Division
Energy, Minerals and Natural Resource Department
1220 South Saint Francis Drive
Santa Fe, New Mexico 87505

ATTN: Leonard Lowe

**RE: Application of XTO Permian Operating, LLC, for Administrative Approval of
2,560-acre Non-Standard Horizontal Spacing Unit (NSP)**Nash Federal Unit
All of Sections 11, 12, 13, and 14, Township 23 South, Range 29 East, N.M.P.M. Eddy
County, New Mexico
Purple Sage; Wolfcamp [Pool Code: 98220]

Dear Mr. Chang,

XTO Permian Operating, LLC ("XTO"), (OGRID No. 373075), pursuant to Division rules 19.15.16.15.(B)(5) and 19.15.15.11.B. NMAC, seeks administrative approval of a Non-Standard Horizontal Spacing Unit for its Nash Unit wells (listed below) in a 2,560-acre, more or less, spacing unit underlying all of Section 11, 12, 13, and 14, Township 23 South, Range 29 East, N.M.P.M, Eddy County, New Mexico.

The proposed 2,560-acre Non-Standard Spacing Unit ("NSP") will will be developed by the following pads and wells (referred to as "units" for clarity):

- **Nash Pad A N/2 Unit**: A 640-acre spacing unit comprised of the N/2 of Sections 11 and 12, Township 23 South, Range 29 East, N.M.P.M., Eddy County, NM, dedicated to the following wells:
 - o Nash Fed Unit 111H (API No. 30-015-*Pending*) [Pool Code: 98220] –

Defining Well

- Nash Fed Unit 112H (API No. 30-015-Pending) [Pool Code: 98220]
 - Nash Fed Unit 161H (API No. 30-015-Pending) [Pool Code: 98220]
 - Nash Fed Unit 162H (API No. 30-015-Pending) [Pool Code: 98220]
 - Nash Fed Unit 163H (API No. 30-015-Pending) [Pool Code: 98220]
- **Nash Pad A S/2 Unit:** A 640-acre spacing unit comprised of the S/2 of Sections 11 and 12, Township 23 South, Range 29 East, N.M.P.M., Eddy County, NM, dedicated to the following wells:
- Nash Fed Unit 113H (API No. 30-015-Pending) [Pool Code: 98220]
 - Nash Fed Unit 114H (API No. 30-015-Pending) [Pool Code: 98220]
 - Nash Fed Unit 163H (API No. 30-015-Pending) [Pool Code: 98220]
 - Nash Fed Unit 164H (API No. 30-015-Pending) [Pool Code: 98220]
- **Nash Pad C N/2 Unit:** A 640-acre spacing unit comprised of the N/2 of Sections 13 and 14, Township 23 South, Range 29 East, N.M.P.M., Eddy County, NM, dedicated to the following wells:
- Nash Fed Unit 115H (API No. 30-015-Pending) [Pool Code: 98220] –
Defining Well
 - Nash Fed Unit 116H (API No. 30-015-Pending) [Pool Code: 98220]
 - Nash Fed Unit 165H (API No. 30-015-Pending) [Pool Code: 98220]
 - Nash Fed Unit 166H (API No. 30-015-Pending) [Pool Code: 98220]
 - Nash Fed Unit 175H (API No. 30-015-Pending) [Pool Code: 98220]
 - Nash Fed Unit 176H (API No. 30-015-Pending) [Pool Code: 98220]
- **Nash Pad C S/2 Unit:** A 640-acre spacing unit comprised of the S/2 of Sections 13 and 14, Township 23 South, Range 29 East, N.M.P.M., Eddy County, NM, dedicated to the following wells:
- Nash Fed Unit 167H (API No. 30-015-Pending) [Pool Code: 98220]
- **Nash Pad D S/2 Unit:** A 640-acre spacing unit comprised of the S/2 of Sections 13 and 14, Township 23 South, Range 29 East, N.M.P.M., Eddy County, NM, dedicated to the following wells:
- Nash Fed Unit 117H (API No. 30-015-Pending) [Pool Code: 98220]
 - Nash Fed Unit 118H (API No. 30-015-Pending) [Pool Code: 98220]
 - Nash Fed Unit 177H (API No. 30-015-Pending) [Pool Code: 98220]
- **Nash Pad D S/2 S/2 Unit:** A 320-acre spacing unit comprised of the S/2 S/2 of Sections 13 and 14, Township 23 South, Range 29 East, N.M.P.M., Eddy County, NM, dedicated to the following wells:
- Nash Fed Unit 168H (API No. 30-015-Pending) [Pool Code: 98220]
 - Nash Fed Unit 178H (API No. 30-015-Pending) [Pool Code: 98220]

The Division has placed all wells listed above in the Purple Sage; Wolfcamp Pool [No. 98220], which is governed by special rules R-14262, for the Purple Sage; Wolfcamp (Gas) Pool

and provides for 320-acres, comprising any two contiguous quarter sections of a single governmental section.

The acreage included in the Non-Standard Spacing Unit will be subject to the following leases:

- NMNM0554221
- NMNM0556859A
- NMNM014140
- NMNM017589
- NMNM019246
- K066003
- NMNM0556859
- NMNM0556860
- NMNM029684
- NMNM0554223

The wells have not been drilled and are not producing. Upon approval, the acreage included in the Non-Standard Spacing Unit(s) will be included in PA revision(s) to the Nash Federal Unit.

As the operator of the Federal Unit, XTO seeks administrative approval of a Non-Standard Spacing Unit to develop the acreage as a single development area. Doing so allows XTO to efficiently located surface facilities, such as well pad locations and centralized tank batteries, reduce disturbance impacts, reduce emissions and leak points, consolidate roadways, reduce traffic, consolidate pipeline(s), and promotes effective well spacing, thereby ensuring the promotion of conservation, the prevention of waste, and the protection of correlative rights. Division rules 19.15.16.7.P and 19.15.16.15.B(8) NMAC encourage oil and gas development, where possible, in enlarged areas of common ownership to minimize surface disturbance and to promote efficient well spacing. Further, Division rule 19.15.16.15.(B)(5) NMAC authorizes administrative approval of such a request.

The affected offset acreage is comprised of the following:

- The S/2 N/2 and the S/2 of Section 2 (state lease E052327)
- Lots F, G, H, I, J, K, N, O, and P of Section 3 (federal leases NMLC0064829 & NMLC0069504),
- The E/2 W/2 and E/2 of Section 10 and 15 (federal lease NMNM111416),
- Lots A, B, C, F, G, H, I, J, and K of Section 22, and
- The N/2 and N/2 S/2 of Sections of 23 and 24, Township 23 South, Range 29 East, N.M.P.M., Eddy County, New Mexico.

Please find the below listed Exhibits included in this application:

Exhibit 1 is a statement from XTO Commercial & Land Advisor, Andrea Smith Bosworth.

Exhibit 2 is a copy of the Well Location and Acreage Dedication Plat (C-102) for each well within the proposed Non-Standard Spacing Unit and includes the SHL, FTP, LTP, and BHL for each well.

Exhibit 3 includes: (1) a lease map showing the proposed Non-Standard Horizontal Spacing Unit and the adjoining tracts identifying the notification area, and (2) a map showing the entirety of the Nash Unit.

Exhibit 4 is a list of affected persons under 19.15.16.15.B(5)(b)(ii) who were sent a copy of this application, proof of publication, and attachments by certified mail advising that any objections must be filed in writing with the Division within 20 days from the date the Division receives the application.

Thank you for your time and attention to this matter. Please let me know if you require additional information.

Very truly yours,

BEATTY & WOZNIAK, P.C.



Miguel Suazo

msuazo@bwenergyllaw.com

Jacob L. Everhart

jeverhart@bwenergyllaw.com

*Attorney(s) for XTO Permian Operating,
LLC*

Exhibit 1

December 4, 2025

Landman Statement

I have reviewed the ownership of the oil and gas leasehold in the proposed 2,560-acre, more or less, Non-Standard Horizontal Spacing Unit ("NSHSU") underlying all of Sections 11, 12, 13, and 14, Township 23 South, Range 29 East, N.M.P.M., Eddy County, New Mexico for purposes of the administrative approval for XTO's **Nash Federal Unit well(s)**. As of the date of this letter, the affected parties are:

See Attached EXHIBIT "D" Provided with the Application

XTO is seeking approval of the non-standard proration unit to eliminate the need for separate production facilities and additional administrative approvals. Approval of the NSHSU will allow for efficient surface facility placement, reduced surface disturbance, and the consolidation of roads, storage tanks, and pipelines. These measures support effective well spacing, conservation of the resource, enhanced recoveries and economics, and waste prevention, while also helping to minimize environmental impacts such as emissions from multiple tank batteries and associated facilities. The Oil Conservation Division's rules encourage such developments to maximize efficiency and reduce surface disturbance in areas of common ownership.

Sincerely,

XTO Permian Operating, LLC.



Andrea Smith Bosworth, CPL
Commercial & Land Advisor – Delaware Basin

Exhibit 2

Nash Pad A N/2 Unit

WELL LOCATION INFORMATION

API Number 30-015-	Pool Code 98220	Pool Name PURPLE SAGE; WOLFCAMP (GAS)
Property Code	Property Name NASH UNIT	Well Number 111H
OGRID No. 005380	Operator Name XTO ENERGY, INC.	Ground Level Elevation 2998'
Surface Owner: <input checked="" type="checkbox"/> State <input type="checkbox"/> Fee <input type="checkbox"/> Tribal <input type="checkbox"/> Federal		Mineral Owner: <input checked="" type="checkbox"/> State <input type="checkbox"/> Fee <input type="checkbox"/> Tribal <input checked="" type="checkbox"/> Federal

Surface Location

UL	Section	Township	Range	Lot	Ft. from N/S	Ft. from E/W	Latitude	Longitude	County
A	13	23S	29E		1,014 FNL	1,110 FEL	32.309568	-103.933250	EDDY

Bottom Hole Location

UL	Section	Township	Range	Lot	Ft. from N/S	Ft. from E/W	Latitude	Longitude	County
D	11	23S	29E		990 FNL	280 FWL	32.324309	-103.963181	EDDY

Dedicated Acres 640.00	Infill or Defining Well DEFINING	Defining Well API	Overlapping Spacing Unit (Y/N) Y	Consolidation Code U
Order Numbers:			Well setbacks are under Common Ownership: <input checked="" type="checkbox"/> Yes <input type="checkbox"/> No	

Kick Off Point (KOP)

UL	Section	Township	Range	Lot	Ft. from N/S	Ft. from E/W	Latitude	Longitude	County
	07	23S	30E	2	1,553 FNL	370 FWL	32.322668	-103.928470	EDDY

First Take Point (FTP)

UL	Section	Township	Range	Lot	Ft. from N/S	Ft. from E/W	Latitude	Longitude	County
A	12	23S	29E		990 FNL	330 FEL	32.324225	-103.930737	EDDY

Last Take Point (LTP)

UL	Section	Township	Range	Lot	Ft. from N/S	Ft. from E/W	Latitude	Longitude	County
D	11	23S	29E		990 FNL	330 FWL	32.324309	-103.963019	EDDY

Unitized Area or Area of Uniform Interest NMNM-070992X	Spacing Unit Type <input checked="" type="checkbox"/> Horizontal <input type="checkbox"/> Vertical	Ground Floor Elevation: 2998'
--	--	---

OPERATOR CERTIFICATIONS

I hereby certify that the information contained herein is true and complete to the best of my knowledge and belief, and, if the well is a vertical or directional well, that this organization either owns a working interest or unleased mineral interest in the land including the proposed bottom hole location or has a right to drill this well at this location pursuant to a contract with an owner of a working interest or unleased mineral interest, or to a voluntary pooling agreement or a compulsory pooling order heretofore entered by the division.

If this well is a horizontal well, I further certify that this organization has received the consent of at least one lessee or owner of a working interest or unleased mineral interest in each tract (in the target pool or formation) in which any part of the well's completed interval will be located or obtained a compulsory pooling order from the division.

L. Srinivas Naveen

6/26/2025

Signature

Date

SURVEYOR CERTIFICATIONS

I hereby certify that the well location shown on this plat was plotted from field notes of actual surveys made by me or under my supervision, and that the same is true and correct to the best of my belief.

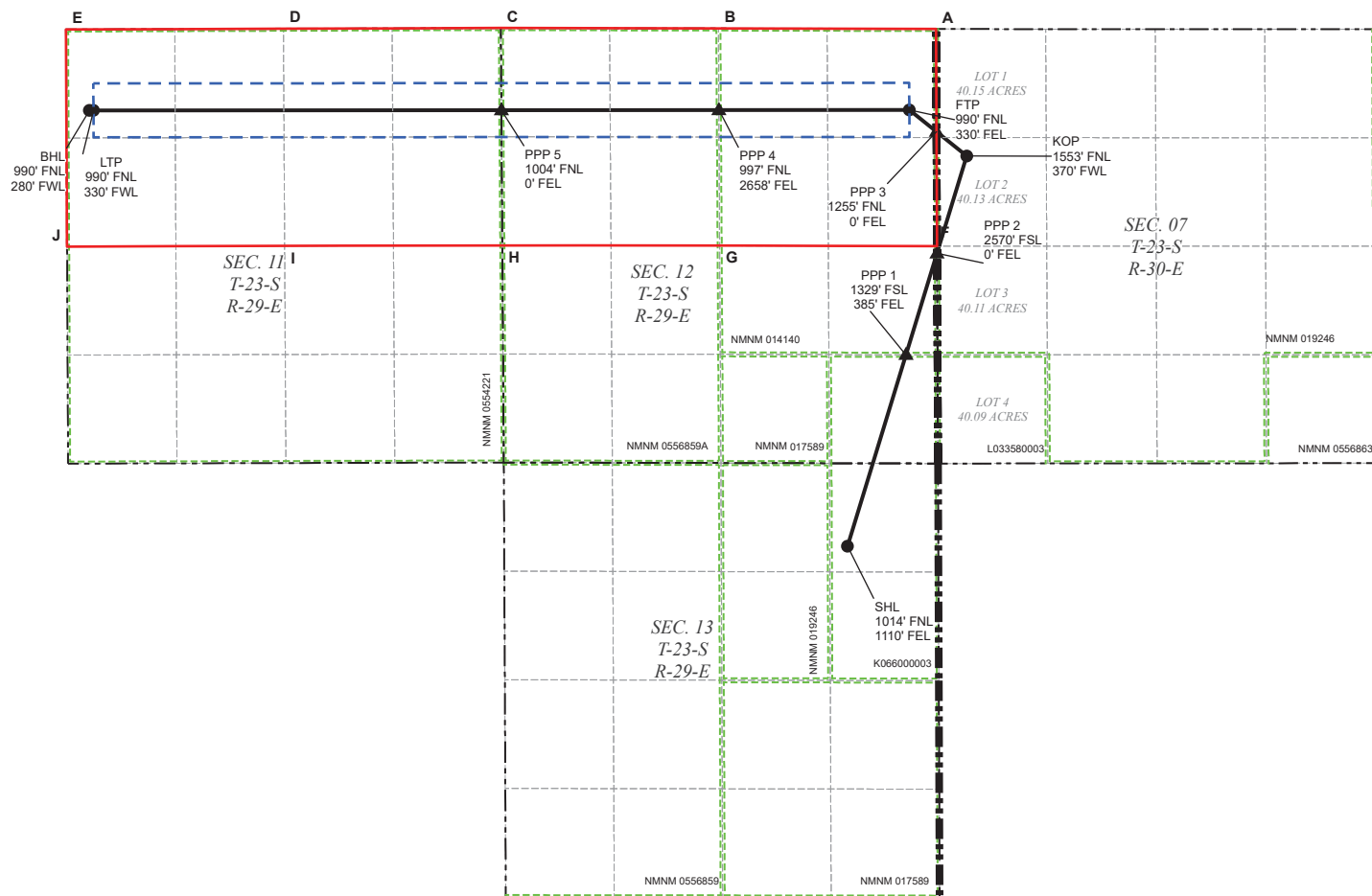


[Handwritten Signature]

Signature and Seal of Professional Surveyor

23786

06-25-2025



LEGEND

- SECTION LINE
-
- 330' BUFFER

WELL COORDINATE TABLE

WELL	NAD 83 NME X	NAD 83 NME Y	NAD 83 LAT	NAD 83 LON	NAD 27 NME X	NAD 27 NME Y	NAD 27 LAT	NAD 27 LON
SHL	664,940.6	476,583.9	32.309568	-103.933250	623,758.2	476,523.7	32.309444	-103.932757
KOP	666,399.3	481,355.2	32.322668	-103.928470	625,217.1	481,294.9	32.322545	-103.927976
FTP	665,696.8	481,918.8	32.324225	-103.930737	624,514.5	481,858.5	32.324101	-103.930244
LTP	655,724.9	481,913.5	32.324309	-103.963019	614,542.7	481,853.3	32.324186	-103.962525
BHL	655,674.9	481,913.4	32.324309	-103.963181	614,492.7	481,853.1	32.324186	-103.962687
PPP 1	665,656.2	478,924.6	32.315995	-103.930905	624,473.9	478,864.4	32.315871	-103.930412
PPP 2	666,035.4	480,164.7	32.319400	-103.929662	624,853.1	480,104.5	32.319276	-103.929169
PPP 3	666,028.1	481,853.0	32.323491	-103.929668	624,845.8	481,592.7	32.323367	-103.929174
PPP 4	665,369.0	481,917.6	32.324245	-103.930273	622,186.7	481,857.3	32.324122	-103.937779
PPP 5	660,711.1	481,916.2	32.324268	-103.946877	619,528.9	481,855.9	32.324145	-103.946383

CORNER COORDINATE TABLE

CORNER	NAD 83 NME X	NAD 83 NME Y	NAD 27 NME X	NAD 27 NME Y
A	666,021.9	482,908.2	624,839.7	482,847.8
B	663,363.1	482,914.2	622,180.9	482,853.9
C	660,704.3	482,920.2	619,522.1	482,859.9
D	658,046.8	482,911.2	616,864.6	482,851.0
E	655,390.2	482,902.4	614,208.1	482,842.2
F	666,035.0	480,252.7	624,852.7	480,192.4
G	663,378.7	480,258.2	622,196.4	480,197.9
H	660,722.2	480,263.7	619,539.9	480,203.4
I	658,061.8	480,255.7	616,879.6	480,195.4
J	655,402.7	480,247.6	614,220.5	480,187.4

WELL LOCATION INFORMATION

API Number 30-015-	Pool Code 98220	Pool Name PURPLE SAGE; WOLFCAMP (GAS)
Property Code	Property Name NASH UNIT	Well Number 112H
OGRID No. 005380	Operator Name XTO ENERGY, INC.	Ground Level Elevation 2999'
Surface Owner: <input checked="" type="checkbox"/> State <input type="checkbox"/> Fee <input type="checkbox"/> Tribal <input type="checkbox"/> Federal		Mineral Owner: <input checked="" type="checkbox"/> State <input type="checkbox"/> Fee <input type="checkbox"/> Tribal <input checked="" type="checkbox"/> Federal

Surface Location

UL	Section	Township	Range	Lot	Ft. from N/S	Ft. from E/W	Latitude	Longitude	County
A	13	23S	29E		1,015 FNL	985 FEL	32.309563	-103.932845	EDDY

Bottom Hole Location

UL	Section	Township	Range	Lot	Ft. from N/S	Ft. from E/W	Latitude	Longitude	County
E	11	23S	29E		2,310 FNL	280 FWL	32.320681	-103.963176	EDDY

Dedicated Acres 640.00	Infill or Defining Well INFILL	Defining Well API	Overlapping Spacing Unit (Y/N) Y	Consolidation Code U
Order Numbers:			Well setbacks are under Common Ownership: <input checked="" type="checkbox"/> Yes <input type="checkbox"/> No	

Kick Off Point (KOP)

UL	Section	Township	Range	Lot	Ft. from N/S	Ft. from E/W	Latitude	Longitude	County
	07	23S	30E	3	2,545 FSL	370 FWL	32.319329	-103.928464	EDDY

First Take Point (FTP)

UL	Section	Township	Range	Lot	Ft. from N/S	Ft. from E/W	Latitude	Longitude	County
H	12	23S	29E		2,310 FNL	330 FEL	32.320596	-103.930732	EDDY

Last Take Point (LTP)

UL	Section	Township	Range	Lot	Ft. from N/S	Ft. from E/W	Latitude	Longitude	County
E	11	23S	29E		2,310 FNL	330 FWL	32.320681	-103.963014	EDDY

Unitized Area or Area of Uniform Interest NMNM-070992X	Spacing Unit Type <input checked="" type="checkbox"/> Horizontal <input type="checkbox"/> Vertical	Ground Floor Elevation: 2999'
--	--	---

OPERATOR CERTIFICATIONS

I hereby certify that the information contained herein is true and complete to the best of my knowledge and belief, and, if the well is a vertical or directional well, that this organization either owns a working interest or unleased mineral interest in the land including the proposed bottom hole location or has a right to drill this well at this location pursuant to a contract with an owner of a working interest or unleased mineral interest, or to a voluntary pooling agreement or a compulsory pooling order heretofore entered by the division.

If this well is a horizontal well, I further certify that this organization has received the consent of at least one lessee or owner of a working interest or unleased mineral interest in each tract (in the target pool or formation) in which any part of the well's completed interval will be located or obtained a compulsory pooling order from the division.

L. Srinivas Naveen

6/26/2025

Signature

Date

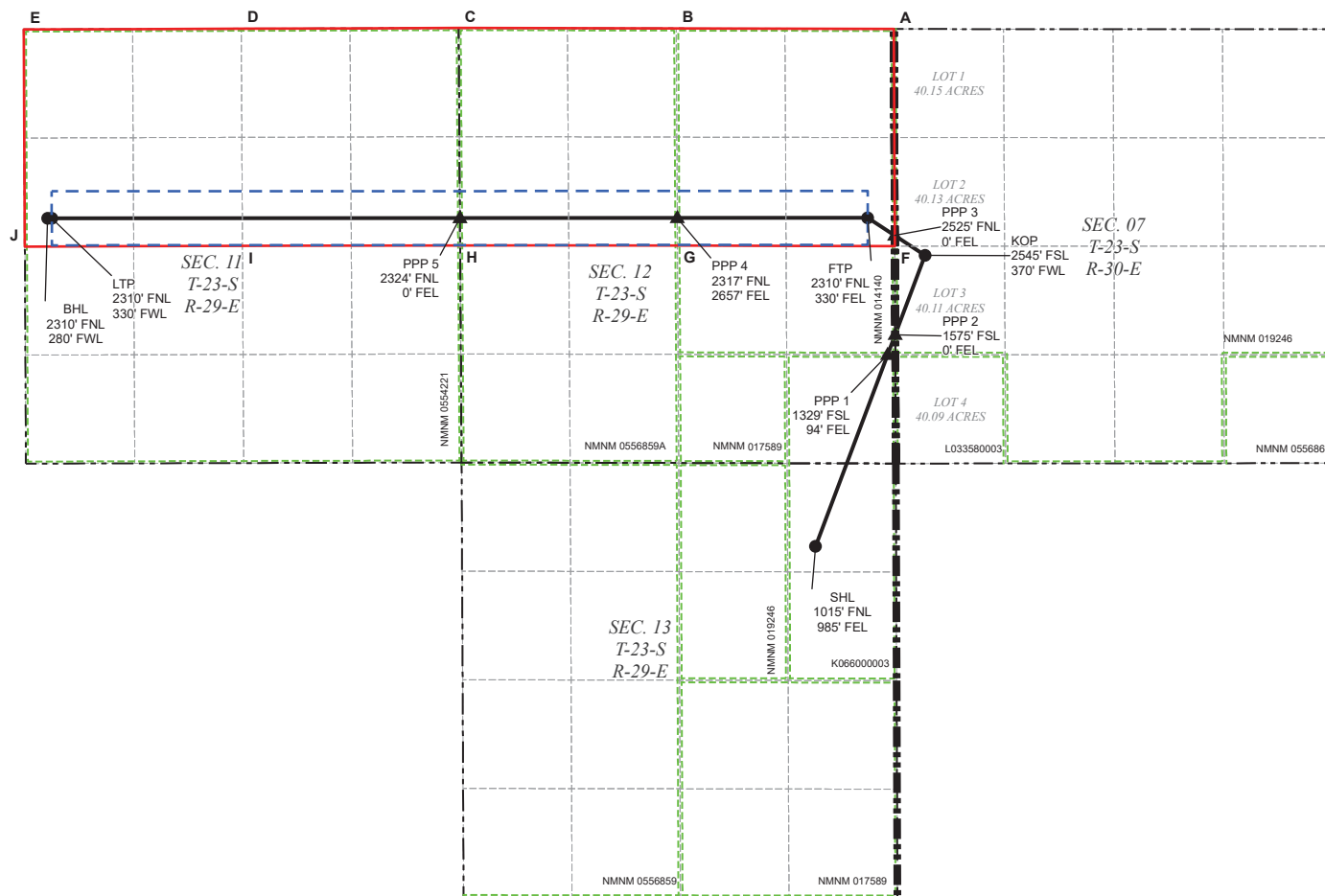
SURVEYOR CERTIFICATIONS

I hereby certify that the well location shown on this plat was plotted from field notes of actual surveys made by me or under my supervision, and that the same is true and correct to the best of my belief.



[Handwritten Signature]

Signature and Seal of Professional Surveyor



LEGEND

- SECTION LINE
-
- 330' BUFFER

WELL COORDINATE TABLE

WELL	NAD 83 NME X	NAD 83 NME Y	NAD 83 LAT	NAD 83 LON	NAD 27 NME X	NAD 27 NME Y	NAD 27 LAT	NAD 27 LON
SHL	665,065.6	476,582.5	32.309563	-103.932845	623,883.2	476,522.3	32.309439	-103.932352
KOP	666,405.7	480,140.4	32.319329	-103.928464	625,223.4	480,080.1	32.319205	-103.927971
FTP	665,703.3	480,598.8	32.320596	-103.930732	624,521.0	480,538.5	32.320473	-103.930239
LTP	655,731.1	480,593.6	32.320681	-103.963014	614,548.9	480,533.3	32.320557	-103.962520
BHL	655,681.1	480,593.4	32.320681	-103.963176	614,498.9	480,533.2	32.320558	-103.962682
PPP 1	665,947.6	478,923.9	32.315990	-103.929962	624,765.2	478,863.7	32.315866	-103.929469
PPP 2	666,040.0	479,169.3	32.316663	-103.929660	624,857.6	479,109.0	32.316540	-103.929167
PPP 3	666,034.1	480,382.9	32.319999	-103.929564	624,851.9	480,322.6	32.319876	-103.929171
PPP 4	665,316.7	480,597.6	32.320617	-103.930264	622,194.5	480,537.3	32.320493	-103.937770
PPP 5	660,720.2	480,596.2	32.320640	-103.946863	619,537.9	480,535.9	32.320516	-103.946370

CORNER COORDINATE TABLE

CORNER	NAD 83 NME X	NAD 83 NME Y	NAD 27 NME X	NAD 27 NME Y
A	666,021.9	482,908.2	624,839.7	482,847.8
B	663,363.1	482,914.2	622,180.9	482,853.9
C	660,704.3	482,920.2	619,522.1	482,859.9
D	658,046.8	482,911.2	616,864.6	482,851.0
E	655,390.2	482,902.4	614,208.1	482,842.2
F	666,035.0	480,252.7	624,852.7	480,192.4
G	663,378.7	480,258.2	622,196.4	480,197.9
H	660,722.2	480,263.7	619,539.9	480,203.4
I	658,061.8	480,255.7	616,879.6	480,195.4
J	655,402.7	480,247.6	614,220.5	480,187.4

WELL LOCATION INFORMATION

API Number 30-015-	Pool Code 98220	Pool Name PURPLE SAGE; WOLFCAMP (GAS)
Property Code	Property Name NASH UNIT	Well Number 161H
OGRID No. 005380	Operator Name XTO ENERGY, INC.	Ground Level Elevation 3000'
Surface Owner: <input checked="" type="checkbox"/> State <input type="checkbox"/> Fee <input type="checkbox"/> Tribal <input type="checkbox"/> Federal		Mineral Owner: <input checked="" type="checkbox"/> State <input type="checkbox"/> Fee <input type="checkbox"/> Tribal <input checked="" type="checkbox"/> Federal

Surface Location

UL	Section	Township	Range	Lot	Ft. from N/S	Ft. from E/W	Latitude	Longitude	County
A	13	23S	29E		1,045 FNL	986 FEL	32.309480	-103.932846	EDDY

Bottom Hole Location

UL	Section	Township	Range	Lot	Ft. from N/S	Ft. from E/W	Latitude	Longitude	County
D	11	23S	29E		330 FNL	280 FWL	32.326123	-103.963184	EDDY

Dedicated Acres 640.00	Infill or Defining Well INFILL	Defining Well API	Overlapping Spacing Unit (Y/N) Y	Consolidation Code U
Order Numbers:			Well setbacks are under Common Ownership: <input checked="" type="checkbox"/> Yes <input type="checkbox"/> No	

Kick Off Point (KOP)

UL	Section	Township	Range	Lot	Ft. from N/S	Ft. from E/W	Latitude	Longitude	County
	07	23S	30E	1	865 FNL	375 FWL	32.324560	-103.928455	EDDY

First Take Point (FTP)

UL	Section	Township	Range	Lot	Ft. from N/S	Ft. from E/W	Latitude	Longitude	County
A	12	23S	29E		330 FNL	330 FEL	32.326039	-103.930740	EDDY

Last Take Point (LTP)

UL	Section	Township	Range	Lot	Ft. from N/S	Ft. from E/W	Latitude	Longitude	County
D	11	23S	29E		330 FNL	330 FWL	32.326123	-103.963022	EDDY

Unitized Area or Area of Uniform Interest NMNM-070992X	Spacing Unit Type <input checked="" type="checkbox"/> Horizontal <input type="checkbox"/> Vertical	Ground Floor Elevation: 3000'
--	--	---

OPERATOR CERTIFICATIONS

I hereby certify that the information contained herein is true and complete to the best of my knowledge and belief, and, if the well is a vertical or directional well, that this organization either owns a working interest or unleased mineral interest in the land including the proposed bottom hole location or has a right to drill this well at this location pursuant to a contract with an owner of a working interest or unleased mineral interest, or to a voluntary pooling agreement or a compulsory pooling order heretofore entered by the division.

If this well is a horizontal well, I further certify that this organization has received the consent of at least one lessee or owner of a working interest or unleased mineral interest in each tract (in the target pool or formation) in which any part of the well's completed interval will be located or obtained a compulsory pooling order from the division.

L. Srinivas Naveen

6/26/2025

Signature

Date

SURVEYOR CERTIFICATIONS

I hereby certify that the well location shown on this plat was plotted from field notes of actual surveys made by me or under my supervision, and that the same is true and correct to the best of my belief.

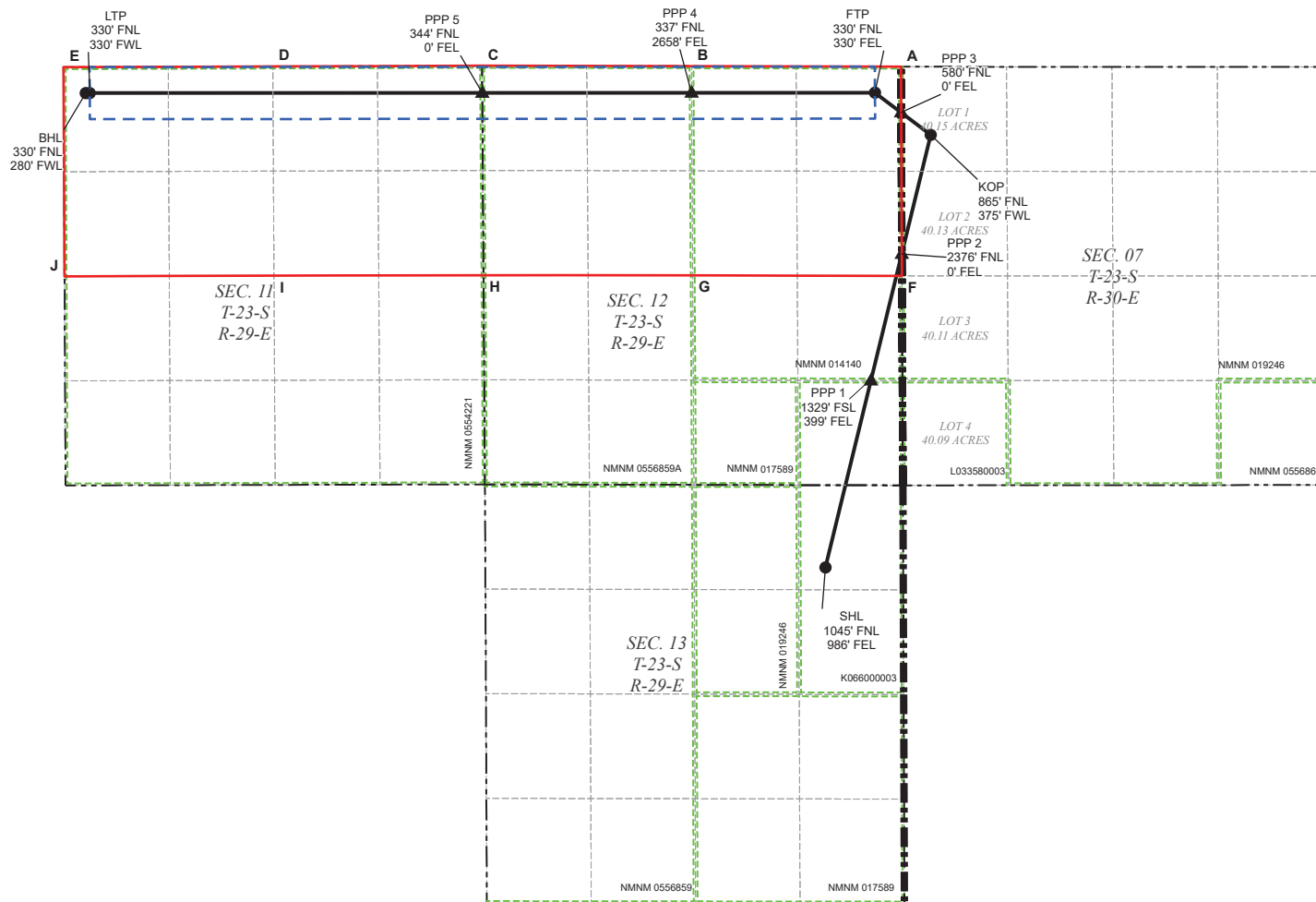


[Handwritten Signature]

Signature and Seal of Professional Surveyor

23786

06-25-2025



LEGEND

- SECTION LINE
- 330' BUFFER
- PPP
- TOWNSHIP LINE
- MINERAL LEASE
- WELL
- DEDICATED ACREAGE
- WELLBORE

WELL COORDINATE TABLE								
WELL	NAD 83 NME X	NAD 83 NME Y	NAD 83 LAT	NAD 83 LON	NAD 27 NME X	NAD 27 NME Y	NAD 27 LAT	NAD 27 LON
SHL	665,065.3	476,552.4	32.309480	-103.932846	623,882.9	476,492.2	32.309356	-103.932354
KOP	666,401.4	482,043.3	32.324560	-103.928455	625,219.2	481,983.0	32.324436	-103.927961
FTP	665,693.5	482,578.8	32.326039	-103.930740	624,511.3	482,518.5	32.325916	-103.930246
LTP	655,721.8	482,573.5	32.326123	-103.963022	614,539.6	482,513.3	32.326000	-103.962528
BHL	655,671.8	482,573.4	32.326123	-103.963184	614,489.6	482,513.1	32.326000	-103.962689
PPP 1	665,642.6	478,924.6	32.315995	-103.930949	624,460.2	478,864.4	32.315871	-103.930456
PPP 2	666,033.6	480,531.7	32.320409	-103.929664	624,851.3	480,471.4	32.320285	-103.929170
PPP 3	666,024.8	482,323.2	32.325347	-103.929670	624,842.5	482,267.9	32.325223	-103.929177
PPP 4	665,365.1	482,577.6	32.326059	-103.930278	622,182.9	482,517.3	32.325936	-103.937784
PPP 5	660,706.6	482,576.2	32.326082	-103.946884	619,524.4	482,515.9	32.325059	-103.946390

CORNER COORDINATE TABLE				
CORNER	NAD 83 NME X	NAD 83 NME Y	NAD 27 NME X	NAD 27 NME Y
A	666,021.9	482,908.2	624,839.7	482,847.8
B	663,363.1	482,914.2	622,180.9	482,853.9
C	660,704.3	482,920.2	619,522.1	482,859.9
D	658,046.8	482,911.2	616,864.6	482,851.0
E	655,390.2	482,902.4	614,208.1	482,842.2
F	666,035.0	480,252.7	624,852.7	480,192.4
G	663,378.7	480,258.2	622,196.4	480,197.9
H	660,722.2	480,263.7	619,539.9	480,203.4
I	658,061.8	480,255.7	616,879.6	480,195.4
J	655,402.7	480,247.6	614,220.5	480,187.4

WELL LOCATION INFORMATION

API Number 30-015-	Pool Code 98220	Pool Name PURPLE SAGE; WOLFCAMP (GAS)
Property Code	Property Name NASH UNIT	Well Number 162H
OGRID No. 005380	Operator Name XTO ENERGY, INC.	Ground Level Elevation 2998'
Surface Owner: <input checked="" type="checkbox"/> State <input type="checkbox"/> Fee <input type="checkbox"/> Tribal <input type="checkbox"/> Federal		Mineral Owner: <input checked="" type="checkbox"/> State <input type="checkbox"/> Fee <input type="checkbox"/> Tribal <input checked="" type="checkbox"/> Federal

Surface Location

UL	Section	Township	Range	Lot	Ft. from N/S	Ft. from E/W	Latitude	Longitude	County
A	13	23S	29E		1,072 FNL	1,236 FEL	32.309409	-103.933657	EDDY

Bottom Hole Location

UL	Section	Township	Range	Lot	Ft. from N/S	Ft. from E/W	Latitude	Longitude	County
E	11	23S	29E		1,650 FNL	280 FWL	32.322495	-103.963178	EDDY

Dedicated Acres 640.00	Infill or Defining Well INFILL	Defining Well API	Overlapping Spacing Unit (Y/N) Y	Consolidation Code U
Order Numbers:			Well setbacks are under Common Ownership: <input checked="" type="checkbox"/> Yes <input type="checkbox"/> No	

Kick Off Point (KOP)

UL	Section	Township	Range	Lot	Ft. from N/S	Ft. from E/W	Latitude	Longitude	County
	07	23S	30E	2	2,117 FNL	370 FWL	32.321117	-103.928467	EDDY

First Take Point (FTP)

UL	Section	Township	Range	Lot	Ft. from N/S	Ft. from E/W	Latitude	Longitude	County
H	12	23S	29E		1,650 FNL	330 FEL	32.322411	-103.930735	EDDY

Last Take Point (LTP)

UL	Section	Township	Range	Lot	Ft. from N/S	Ft. from E/W	Latitude	Longitude	County
E	11	23S	29E		1,650 FNL	330 FWL	32.322495	-103.963017	EDDY

Unitized Area or Area of Uniform Interest NMNM-070992X	Spacing Unit Type <input checked="" type="checkbox"/> Horizontal <input type="checkbox"/> Vertical	Ground Floor Elevation: 2998'
--	--	---

OPERATOR CERTIFICATIONS

I hereby certify that the information contained herein is true and complete to the best of my knowledge and belief, and, if the well is a vertical or directional well, that this organization either owns a working interest or unleased mineral interest in the land including the proposed bottom hole location or has a right to drill this well at this location pursuant to a contract with an owner of a working interest or unleased mineral interest, or to a voluntary pooling agreement or a compulsory pooling order heretofore entered by the division.

If this well is a horizontal well, I further certify that this organization has received the consent of at least one lessee or owner of a working interest or unleased mineral interest in each tract (in the target pool or formation) in which any part of the well's completed interval will be located or obtained a compulsory pooling order from the division.

L. Srinivas Naveen

6/26/2025

Signature

Date

SURVEYOR CERTIFICATIONS

I hereby certify that the well location shown on this plat was plotted from field notes of actual surveys made by me or under my supervision, and that the same is true and correct to the best of my belief.



[Handwritten Signature]

Signature and Seal of Professional Surveyor

23786

06-25-2025

WELL LOCATION INFORMATION

API Number 30-015-	Pool Code 98220	Pool Name PURPLE SAGE; WOLFCAMP (GAS)
Property Code	Property Name NASH UNIT	Well Number 163H
OGRID No. 005380	Operator Name XTO ENERGY, INC.	Ground Level Elevation 2999'
Surface Owner: <input checked="" type="checkbox"/> State <input type="checkbox"/> Fee <input type="checkbox"/> Tribal <input type="checkbox"/> Federal		Mineral Owner: <input checked="" type="checkbox"/> State <input type="checkbox"/> Fee <input type="checkbox"/> Tribal <input checked="" type="checkbox"/> Federal

Surface Location

UL	Section	Township	Range	Lot	Ft. from N/S	Ft. from E/W	Latitude	Longitude	County
A	13	23S	29E		1,074 FNL	1,111 FEL	32.309403	-103.933253	EDDY

Bottom Hole Location

UL	Section	Township	Range	Lot	Ft. from N/S	Ft. from E/W	Latitude	Longitude	County
L	11	23S	29E		2,310 FSL	280 FWL	32.318786	-103.963173	EDDY

Dedicated Acres 640.00	Infill or Defining Well INFILL	Defining Well API	Overlapping Spacing Unit (Y/N) Y	Consolidation Code U
Order Numbers:			Well setbacks are under Common Ownership: <input checked="" type="checkbox"/> Yes <input type="checkbox"/> No	

Kick Off Point (KOP)

UL	Section	Township	Range	Lot	Ft. from N/S	Ft. from E/W	Latitude	Longitude	County
	07	23S	30E	3	1,960 FSL	371 FWL	32.317719	-103.928460	EDDY

First Take Point (FTP)

UL	Section	Township	Range	Lot	Ft. from N/S	Ft. from E/W	Latitude	Longitude	County
I	12	23S	29E		2,310 FSL	330 FEL	32.318691	-103.930730	EDDY

Last Take Point (LTP)

UL	Section	Township	Range	Lot	Ft. from N/S	Ft. from E/W	Latitude	Longitude	County
L	11	23S	29E		2,310 FSL	330 FWL	32.318786	-103.963011	EDDY

Unitized Area or Area of Uniform Interest NMNM-070992X	Spacing Unit Type <input checked="" type="checkbox"/> Horizontal <input type="checkbox"/> Vertical	Ground Floor Elevation: 2999'
--	--	---

OPERATOR CERTIFICATIONS

I hereby certify that the information contained herein is true and complete to the best of my knowledge and belief, and, if the well is a vertical or directional well, that this organization either owns a working interest or unleased mineral interest in the land including the proposed bottom hole location or has a right to drill this well at this location pursuant to a contract with an owner of a working interest or unleased mineral interest, or to a voluntary pooling agreement or a compulsory pooling order heretofore entered by the division.

If this well is a horizontal well, I further certify that this organization has received the consent of at least one lessee or owner of a working interest or unleased mineral interest in each tract (in the target pool or formation) in which any part of the well's completed interval will be located or obtained a compulsory pooling order from the division.

L. Srinivas Naveen

6/26/2025

Signature

Date

Srinivas Naveen Laghuvarapu

Released to Imaging: 1/20/2026 2:33:28 PM

Printed Name:

SURVEYOR CERTIFICATIONS

I hereby certify that the well location shown on this plat was plotted from field notes of actual surveys made by me or under my supervision, and that the same is true and correct to the best of my belief.



[Handwritten Signature]

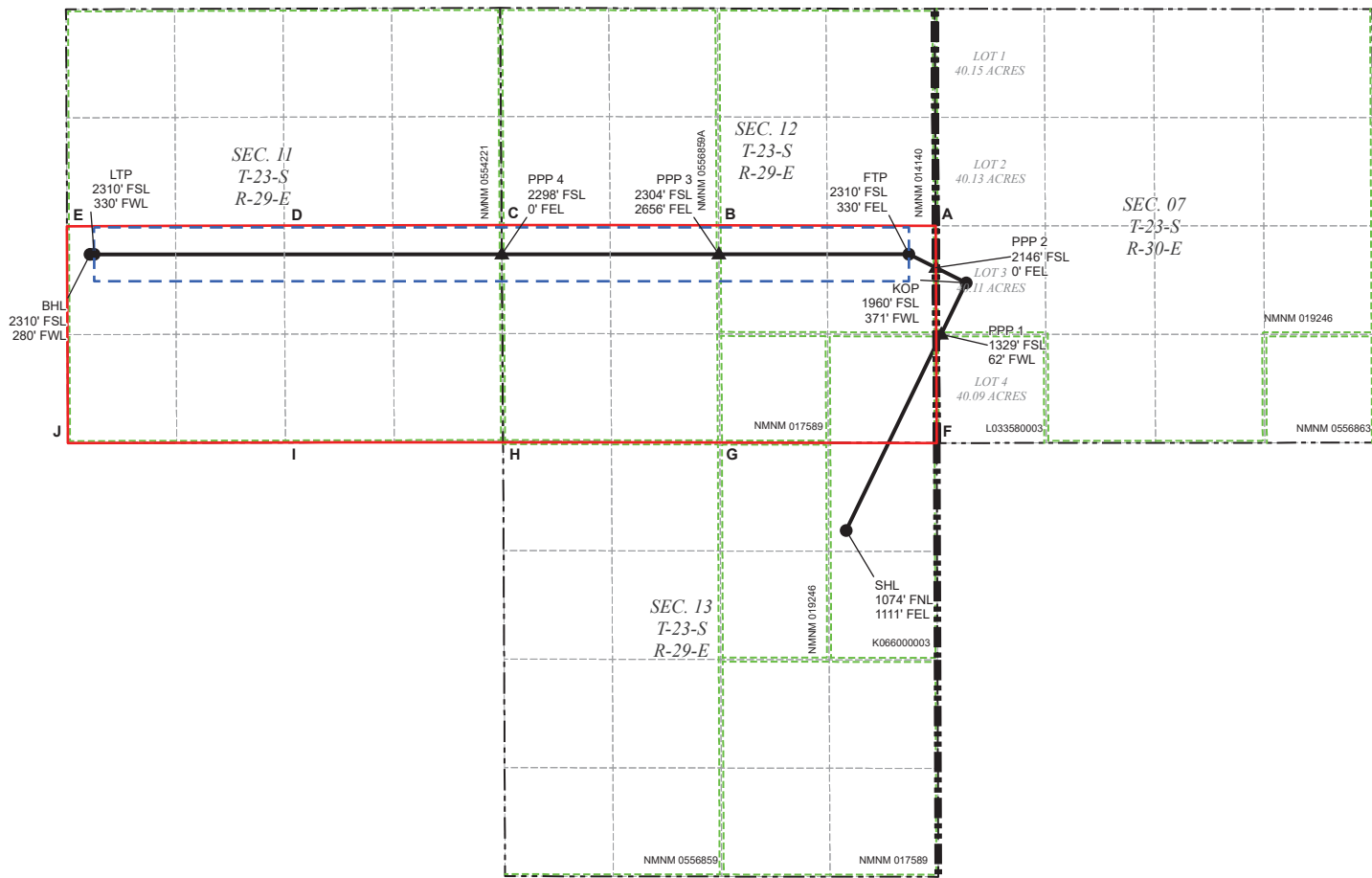
Signature and Seal of Professional Surveyor

23786

06-25-2025

Certificate Number:

Date of Survey:



LEGEND

- SECTION LINE
-
- 330' BUFFER

WELL COORDINATE TABLE								
WELL	NAD 83 NME X	NAD 83 NME Y	NAD 83 LAT	NAD 83 LON	NAD 27 NME X	NAD 27 NME Y	NAD 27 LAT	NAD 27 LON
SHL	664,939.9	476,523.9	32.309403	-103.933253	623,757.5	476,463.7	32.309280	-103.932760
KOP	666,409.2	479,554.5	32.317719	-103.928460	625,226.9	479,494.3	32.317595	-103.927967
FTP	665,706.6	479,905.5	32.318691	-103.930730	624,524.3	479,845.2	32.318567	-103.930237
LTP	655,734.2	479,904.1	32.318786	-103.963011	614,552.0	479,843.9	32.318662	-103.962517
BHL	655,684.2	479,904.0	32.318786	-103.963173	614,502.0	479,843.8	32.318662	-103.962679
PPP 1	666,103.4	478,923.7	32.315988	-103.929457	624,921.1	478,863.5	32.315864	-103.928964
PPP 2	666,037.3	479,740.3	32.318233	-103.929661	624,855.0	479,680.0	32.318109	-103.929168
PPP 3	663,380.8	479,905.2	32.318713	-103.933259	622,198.5	479,844.9	32.318590	-103.937765
PPP 4	660,724.9	479,904.6	32.318739	-103.940656	619,542.6	479,844.6	32.318616	-103.946363

CORNER COORDINATE TABLE				
CORNER	NAD 83 NME X	NAD 83 NME Y	NAD 27 NME X	NAD 27 NME Y
A	666,035.0	480,252.7	624,852.7	480,192.4
B	663,378.7	480,258.2	622,196.4	480,197.9
C	660,722.2	480,263.7	619,539.9	480,203.4
D	658,061.8	480,255.7	616,879.6	480,195.4
E	655,402.7	480,247.6	614,220.5	480,187.4
F	666,047.3	477,594.6	624,864.9	477,534.4
G	663,394.2	477,601.4	622,211.9	477,541.2
H	660,740.0	477,607.1	619,557.7	477,546.9
I	658,076.8	477,600.8	616,894.5	477,540.6
J	655,414.4	477,593.2	614,232.1	477,533.1

Exhibit 2

Nash Pad A S/2 Unit

WELL LOCATION INFORMATION

API Number 30-015-	Pool Code 98220	Pool Name PURPLE SAGE; WOLFCAMP (GAS)
Property Code	Property Name NASH UNIT	Well Number 113H
OGRID No. 005380	Operator Name XTO ENERGY, INC.	Ground Level Elevation 2998'
Surface Owner: <input checked="" type="checkbox"/> State <input type="checkbox"/> Fee <input type="checkbox"/> Tribal <input type="checkbox"/> Federal		Mineral Owner: <input checked="" type="checkbox"/> State <input type="checkbox"/> Fee <input type="checkbox"/> Tribal <input checked="" type="checkbox"/> Federal

Surface Location

UL	Section	Township	Range	Lot	Ft. from N/S	Ft. from E/W	Latitude	Longitude	County
A	13	23S	29E		1,042 FNL	1,236 FEL	32.309491	-103.933655	EDDY

Bottom Hole Location

UL	Section	Township	Range	Lot	Ft. from N/S	Ft. from E/W	Latitude	Longitude	County
L	11	23S	29E		1,650 FSL	280 FWL	32.316971	-103.963171	EDDY

Dedicated Acres 640.00	Infill or Defining Well DEFINING	Defining Well API	Overlapping Spacing Unit (Y/N) Y	Consolidation Code U
Order Numbers:			Well setbacks are under Common Ownership: <input checked="" type="checkbox"/> Yes <input type="checkbox"/> No	

Kick Off Point (KOP)

UL	Section	Township	Range	Lot	Ft. from N/S	Ft. from E/W	Latitude	Longitude	County
	07	23S	30E	4	1,312 FSL	362 FWL	32.315939	-103.928486	EDDY

First Take Point (FTP)

UL	Section	Township	Range	Lot	Ft. from N/S	Ft. from E/W	Latitude	Longitude	County
I	12	23S	29E		1,650 FSL	330 FEL	32.316876	-103.930728	EDDY

Last Take Point (LTP)

UL	Section	Township	Range	Lot	Ft. from N/S	Ft. from E/W	Latitude	Longitude	County
L	11	23S	29E		1,650 FSL	330 FWL	32.316971	-103.963009	EDDY

Unitized Area or Area of Uniform Interest NMNM-070992X	Spacing Unit Type <input checked="" type="checkbox"/> Horizontal <input type="checkbox"/> Vertical	Ground Floor Elevation: 2998'
--	--	---

OPERATOR CERTIFICATIONS

I hereby certify that the information contained herein is true and complete to the best of my knowledge and belief, and, if the well is a vertical or directional well, that this organization either owns a working interest or unleased mineral interest in the land including the proposed bottom hole location or has a right to drill this well at this location pursuant to a contract with an owner of a working interest or unleased mineral interest, or to a voluntary pooling agreement or a compulsory pooling order heretofore entered by the division.

If this well is a horizontal well, I further certify that this organization has received the consent of at least one lessee or owner of a working interest or unleased mineral interest in each tract (in the target pool or formation) in which any part of the well's completed interval will be located or obtained a compulsory pooling order from the division.

L. Srinivas Naveen

6/26/2025

Signature

Date

Srinivas Naveen Jaguwarapu

Printed Name

SURVEYOR CERTIFICATIONS

I hereby certify that the well location shown on this plat was plotted from field notes of actual surveys made by me or under my supervision, and that the same is true and correct to the best of my belief.



[Handwritten Signature]

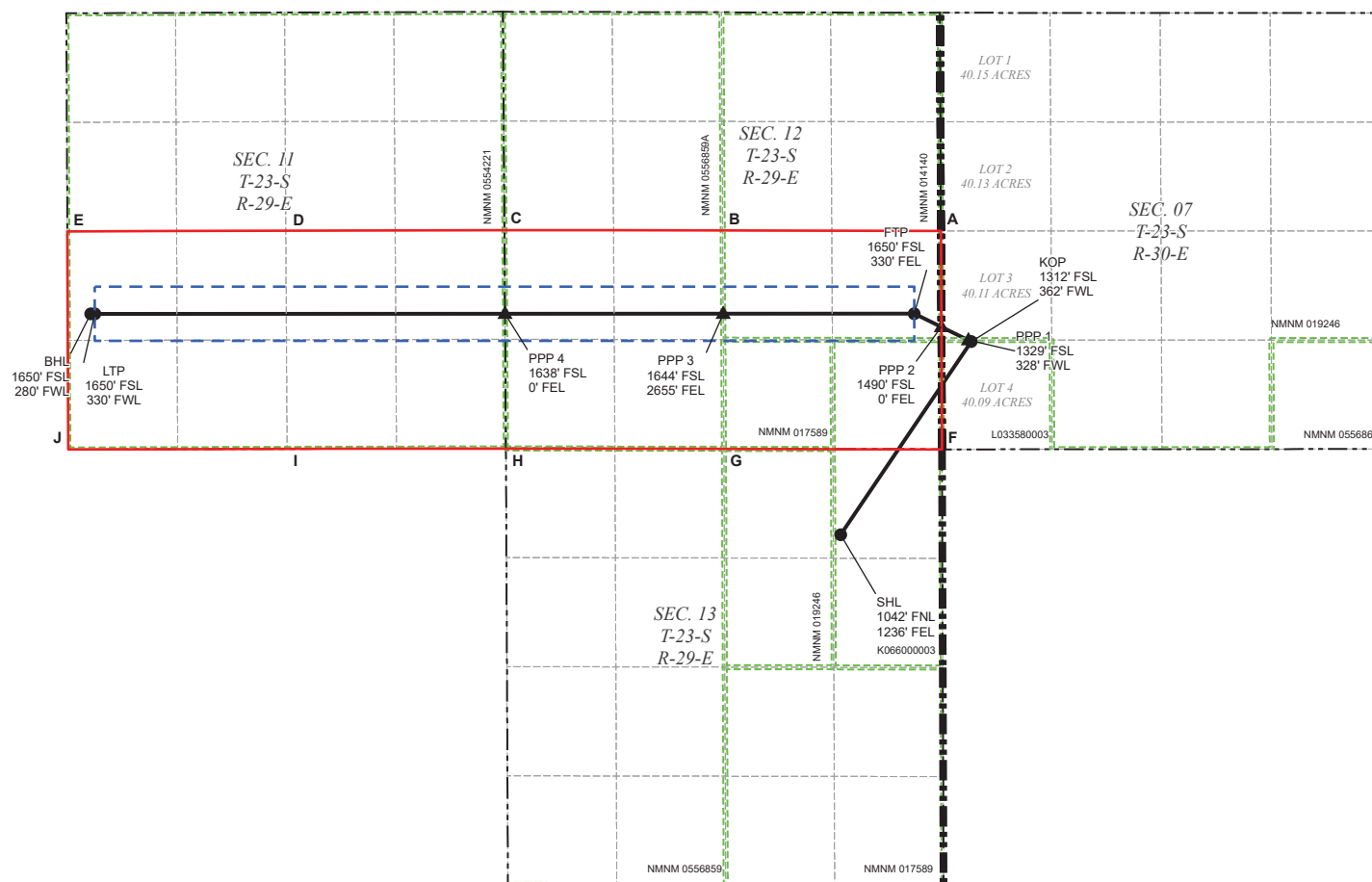
Signature and Seal of Professional Surveyor

23786

06-25-2025

Certificate Number

Date of Survey



LEGEND



WELL COORDINATE TABLE								
WELL	NAD 83 NME X	NAD 83 NME Y	NAD 83 LAT	NAD 83 LON	NAD 27 NME X	NAD 27 NME Y	NAD 27 LAT	NAD 27 LON
SHL	664,815.3	476,555.5	32.309491	-103.933655	623,632.9	476,495.3	32.309368	-103.933163
KOP	666,403.6	478,907.1	32.315939	-103.928486	625,221.3	478,846.8	32.315815	-103.927993
FTP	665,709.6	479,245.5	32.316876	-103.930728	624,527.3	479,185.2	32.316753	-103.930235
LTP	655,737.2	479,244.1	32.316971	-103.963009	614,554.9	479,183.9	32.316848	-103.962515
BHL	655,687.2	479,244.0	32.316971	-103.963171	614,504.9	479,183.8	32.316848	-103.962677
PPP 1	666,369.3	478,923.8	32.315985	-103.928597	625,186.9	478,863.6	32.315862	-103.928104
PPP 2	666,040.4	479,084.2	32.316430	-103.929659	624,858.0	479,024.0	32.316306	-103.929166
PPP 3	663,384.6	479,245.2	32.316889	-103.938754	622,202.3	479,184.9	32.316776	-103.937761
PPP 4	660,729.2	479,244.8	32.316925	-103.946650	619,546.9	479,184.6	32.316801	-103.946356

CORNER COORDINATE TABLE				
CORNER	NAD 83 NME X	NAD 83 NME Y	NAD 27 NME X	NAD 27 NME Y
A	666,035.0	480,252.7	624,852.7	480,192.4
B	663,378.7	480,258.2	622,196.4	480,197.9
C	660,722.2	480,263.7	619,539.9	480,203.4
D	658,061.8	480,255.7	616,879.6	480,195.4
E	655,402.7	480,247.6	614,220.5	480,187.4
F	666,047.3	477,594.6	624,864.9	477,534.4
G	663,394.2	477,601.4	622,211.9	477,541.2
H	660,740.0	477,607.1	619,557.7	477,546.9
I	658,076.8	477,600.8	616,894.5	477,540.6

WELL LOCATION INFORMATION

API Number 30-015-	Pool Code 98220	Pool Name PURPLE SAGE; WOLFCAMP (GAS)
Property Code	Property Name NASH UNIT	Well Number 114H
OGRID No. 005380	Operator Name XTO ENERGY, INC.	Ground Level Elevation 2999'
Surface Owner: <input checked="" type="checkbox"/> State <input type="checkbox"/> Fee <input type="checkbox"/> Tribal <input type="checkbox"/> Federal		Mineral Owner: <input checked="" type="checkbox"/> State <input type="checkbox"/> Fee <input type="checkbox"/> Tribal <input checked="" type="checkbox"/> Federal

Surface Location

UL	Section	Township	Range	Lot	Ft. from N/S	Ft. from E/W	Latitude	Longitude	County
A	13	23S	29E		1,044 FNL	1,111 FEL	32.309486	-103.933251	EDDY

Bottom Hole Location

UL	Section	Township	Range	Lot	Ft. from N/S	Ft. from E/W	Latitude	Longitude	County
M	11	23S	29E		330 FSL	280 FWL	32.313343	-103.963167	EDDY

Dedicated Acres 640.00	Infill or Defining Well INFILL	Defining Well API	Overlapping Spacing Unit (Y/N) Y	Consolidation Code U
Order Numbers:			Well setbacks are under Common Ownership: <input checked="" type="checkbox"/> Yes <input type="checkbox"/> No	

Kick Off Point (KOP)

UL	Section	Township	Range	Lot	Ft. from N/S	Ft. from E/W	Latitude	Longitude	County
	07	23S	30E	4	156 FSL	365 FWL	32.312759	-103.928474	EDDY

First Take Point (FTP)

UL	Section	Township	Range	Lot	Ft. from N/S	Ft. from E/W	Latitude	Longitude	County
P	12	23S	29E		330 FSL	330 FEL	32.313248	-103.930724	EDDY

Last Take Point (LTP)

UL	Section	Township	Range	Lot	Ft. from N/S	Ft. from E/W	Latitude	Longitude	County
M	11	23S	29E		330 FSL	330 FWL	32.313343	-103.963005	EDDY

Unitized Area or Area of Uniform Interest NMNM-070992X	Spacing Unit Type <input checked="" type="checkbox"/> Horizontal <input type="checkbox"/> Vertical	Ground Floor Elevation: 2999'
--	--	---

OPERATOR CERTIFICATIONS

I hereby certify that the information contained herein is true and complete to the best of my knowledge and belief, and, if the well is a vertical or directional well, that this organization either owns a working interest or unleased mineral interest in the land including the proposed bottom hole location or has a right to drill this well at this location pursuant to a contract with an owner of a working interest or unleased mineral interest, or to a voluntary pooling agreement or a compulsory pooling order heretofore entered by the division.

If this well is a horizontal well, I further certify that this organization has received the consent of at least one lessee or owner of a working interest or unleased mineral interest in each tract (in the target pool or formation) in which any part of the well's completed interval will be located or obtained a compulsory pooling order from the division.

L. Srinivas Naveen

6/26/2025

Signature

Date

Srinivas Naveen Jaghwarapu

SURVEYOR CERTIFICATIONS

I hereby certify that the well location shown on this plat was plotted from field notes of actual surveys made by me or under my supervision, and that the same is true and correct to the best of my belief.

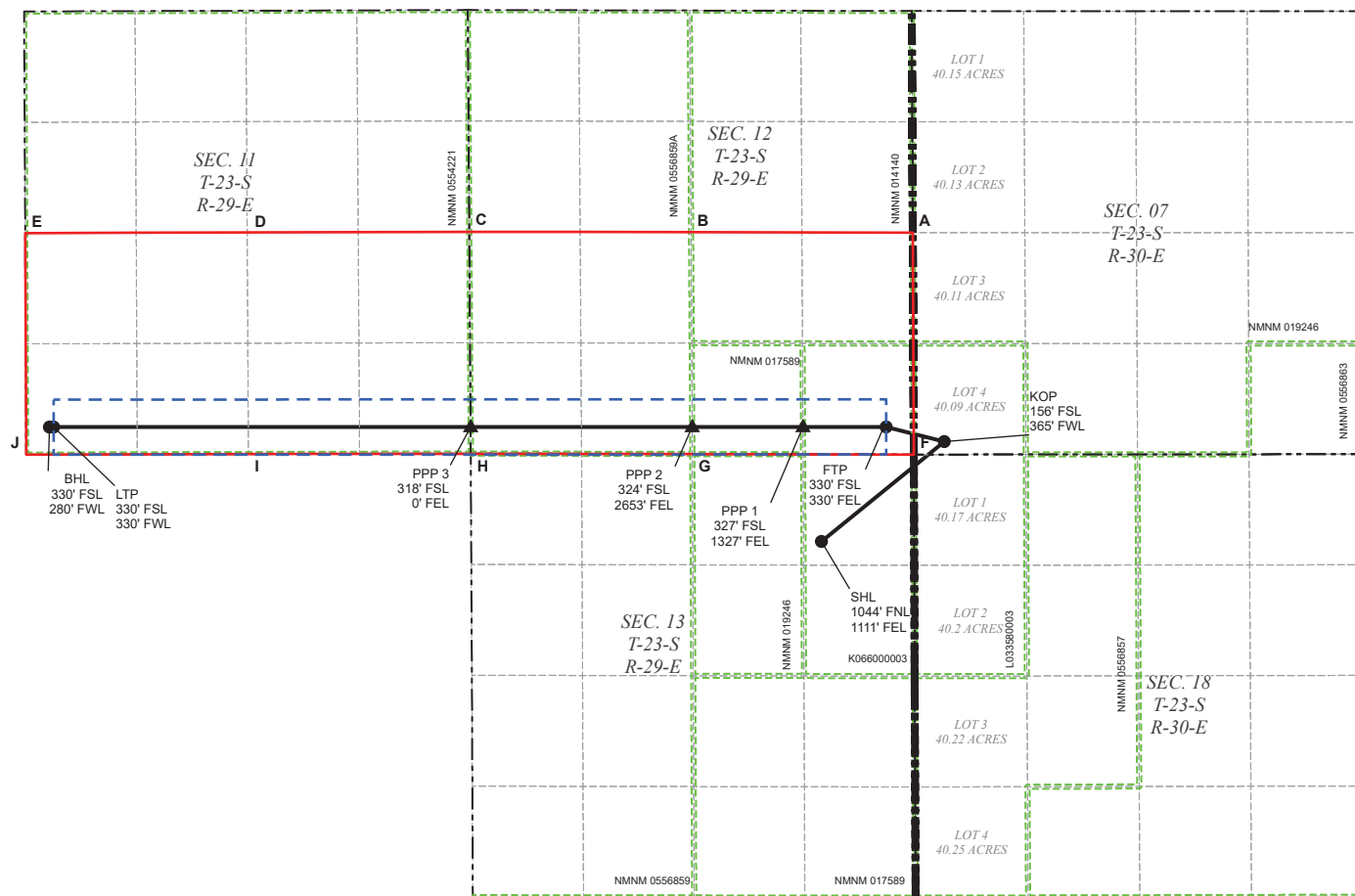


[Handwritten Signature]

Signature and Seal of Professional Surveyor

23786

06-25-2025



LEGEND

- SECTION LINE
- 330' BUFFER
- PPP
- TOWNSHIP LINE
- MINERAL LEASE
- WELL
- DEDICATED ACREAGE
- WELLBORE

WELL COORDINATE TABLE								
WELL	NAD 83 NME X	NAD 83 NME Y	NAD 83 LAT	NAD 83 LON	NAD 27 NME X	NAD 27 NME Y	NAD 27 LAT	NAD 27 LON
SHL	664,940.3	476,553.9	32.309486	-103.933251	623,757.9	476,493.7	32.309362	-103.932758
KOP	666,411.7	477,750.4	32.312759	-103.928474	625,229.3	477,690.2	32.312636	-103.927981
FTP	665,715.7	477,925.5	32.313248	-103.930724	624,533.4	477,865.2	32.313124	-103.930231
LTP	655,743.0	477,924.1	32.313343	-103.963005	614,560.7	477,864.0	32.313220	-103.962512
BHL	655,693.0	477,924.0	32.313343	-103.963167	614,510.7	477,863.8	32.313220	-103.962673
PPP 1	664,719.0	477,925.3	32.313258	-103.933951	623,536.7	477,865.1	32.313134	-103.933458
PPP 2	663,392.3	477,925.2	32.313271	-103.938245	622,210.0	477,864.9	32.313147	-103.937752
PPP 3	660,738.4	477,924.9	32.313296	-103.916836	619,556.0	477,864.6	32.313173	-103.946342

CORNER COORDINATE TABLE				
CORNER	NAD 83 NME X	NAD 83 NME Y	NAD 27 NME X	NAD 27 NME Y
A	666,035.0	480,252.7	624,852.7	480,192.4
B	663,378.7	480,258.2	622,196.4	480,197.9
C	660,722.2	480,263.7	619,539.9	480,203.4
D	658,061.8	480,255.7	616,879.6	480,195.4
E	655,402.7	480,247.6	614,220.5	480,187.4
F	666,047.3	477,594.6	624,864.9	477,534.4
G	663,394.2	477,601.4	622,211.9	477,541.2
H	660,740.0	477,607.1	619,557.7	477,546.9
I	658,076.8	477,600.8	616,894.5	477,540.6
J	655,414.4	477,593.2	614,232.1	477,533.1

WELL LOCATION INFORMATION

API Number 30-015-	Pool Code 98220	Pool Name PURPLE SAGE; WOLFCAMP (GAS)
Property Code	Property Name NASH UNIT	Well Number 163H
OGRID No. 005380	Operator Name XTO ENERGY, INC.	Ground Level Elevation 2999'
Surface Owner: <input checked="" type="checkbox"/> State <input type="checkbox"/> Fee <input type="checkbox"/> Tribal <input type="checkbox"/> Federal		Mineral Owner: <input checked="" type="checkbox"/> State <input type="checkbox"/> Fee <input type="checkbox"/> Tribal <input checked="" type="checkbox"/> Federal

Surface Location

UL	Section	Township	Range	Lot	Ft. from N/S	Ft. from E/W	Latitude	Longitude	County
A	13	23S	29E		1,074 FNL	1,111 FEL	32.309403	-103.933253	EDDY

Bottom Hole Location

UL	Section	Township	Range	Lot	Ft. from N/S	Ft. from E/W	Latitude	Longitude	County
L	11	23S	29E		2,310 FSL	280 FWL	32.318786	-103.963173	EDDY

Dedicated Acres 640.00	Infill or Defining Well INFILL	Defining Well API	Overlapping Spacing Unit (Y/N) Y	Consolidation Code U
Order Numbers:			Well setbacks are under Common Ownership: <input checked="" type="checkbox"/> Yes <input type="checkbox"/> No	

Kick Off Point (KOP)

UL	Section	Township	Range	Lot	Ft. from N/S	Ft. from E/W	Latitude	Longitude	County
	07	23S	30E	3	1,960 FSL	371 FWL	32.317719	-103.928460	EDDY

First Take Point (FTP)

UL	Section	Township	Range	Lot	Ft. from N/S	Ft. from E/W	Latitude	Longitude	County
I	12	23S	29E		2,310 FSL	330 FEL	32.318691	-103.930730	EDDY

Last Take Point (LTP)

UL	Section	Township	Range	Lot	Ft. from N/S	Ft. from E/W	Latitude	Longitude	County
L	11	23S	29E		2,310 FSL	330 FWL	32.318786	-103.963011	EDDY

Unitized Area or Area of Uniform Interest NMNM-070992X	Spacing Unit Type <input checked="" type="checkbox"/> Horizontal <input type="checkbox"/> Vertical	Ground Floor Elevation: 2999'
--	--	---

OPERATOR CERTIFICATIONS

I hereby certify that the information contained herein is true and complete to the best of my knowledge and belief, and, if the well is a vertical or directional well, that this organization either owns a working interest or unleased mineral interest in the land including the proposed bottom hole location or has a right to drill this well at this location pursuant to a contract with an owner of a working interest or unleased mineral interest, or to a voluntary pooling agreement or a compulsory pooling order heretofore entered by the division.

If this well is a horizontal well, I further certify that this organization has received the consent of at least one lessee or owner of a working interest or unleased mineral interest in each tract (in the target pool or formation) in which any part of the well's completed interval will be located or obtained a compulsory pooling order from the division.

L. Srinivas Naveen

6/26/2025

Signature

Date

Srinivas Naveen Laghuvarapu

Released to Imaging: 1/20/2026 2:33:28 PM

Printed Name:

SURVEYOR CERTIFICATIONS

I hereby certify that the well location shown on this plat was plotted from field notes of actual surveys made by me or under my supervision, and that the same is true and correct to the best of my belief.



[Handwritten Signature]

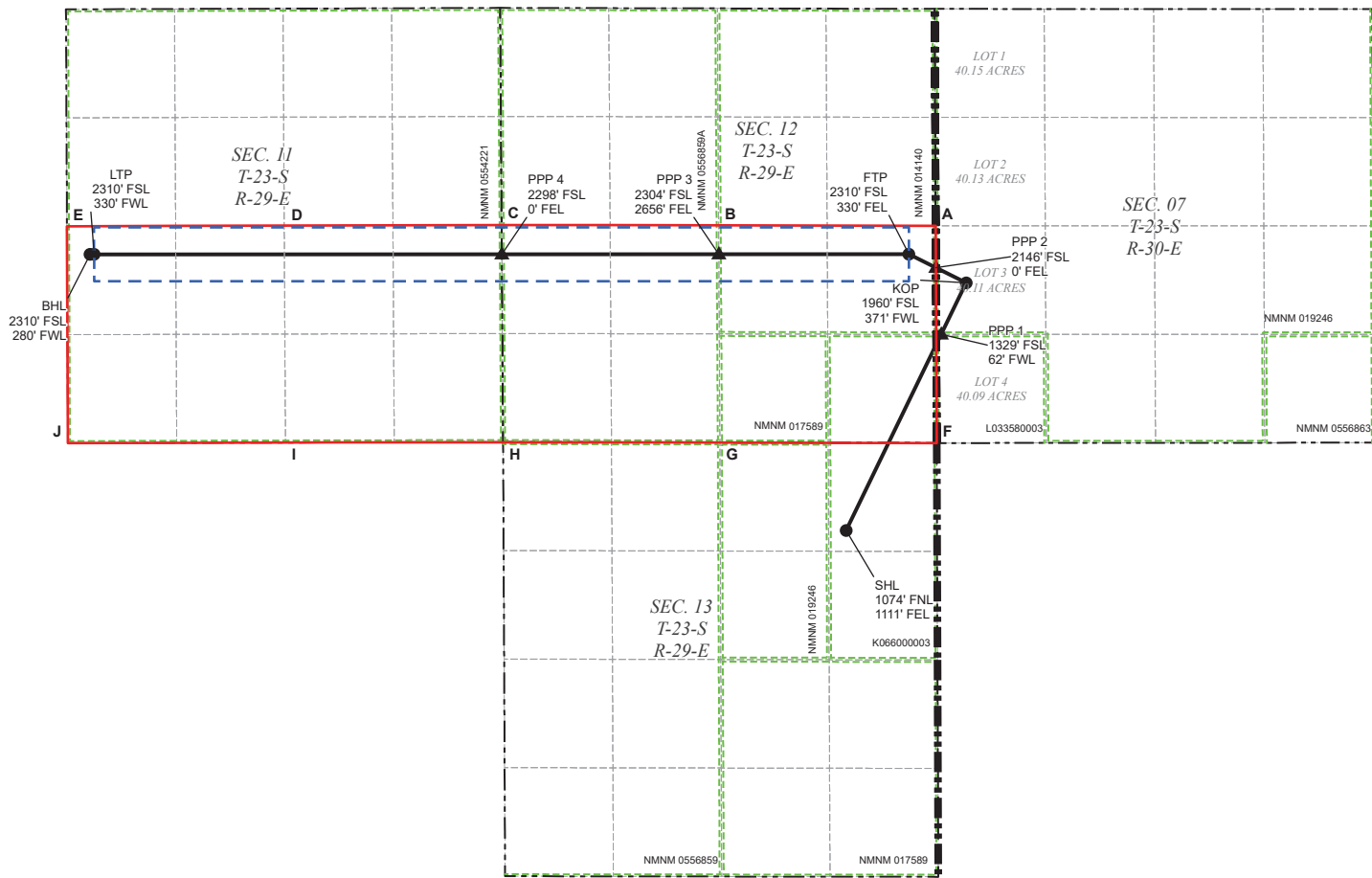
Signature and Seal of Professional Surveyor

23786

06-25-2025

Certificate Number:

Date of Survey:



LEGEND

- SECTION LINE
-
- 330' BUFFER

WELL COORDINATE TABLE								
WELL	NAD 83 NME X	NAD 83 NME Y	NAD 83 LAT	NAD 83 LON	NAD 27 NME X	NAD 27 NME Y	NAD 27 LAT	NAD 27 LON
SHL	664,939.9	476,523.9	32.309403	-103.933253	623,757.5	476,463.7	32.309280	-103.932760
KOP	666,409.2	479,554.5	32.317719	-103.928460	625,226.9	479,494.3	32.317595	-103.927967
FTP	665,706.6	479,905.5	32.318691	-103.930730	624,524.3	479,845.2	32.318567	-103.930237
LTP	655,734.2	479,904.1	32.318786	-103.963011	614,552.0	479,843.9	32.318662	-103.962517
BHL	655,684.2	479,904.0	32.318786	-103.963173	614,502.0	479,843.8	32.318662	-103.962679
PPP 1	666,103.4	478,923.7	32.315988	-103.929457	624,921.1	478,863.5	32.315864	-103.928964
PPP 2	666,037.3	479,740.3	32.318233	-103.929661	624,855.0	479,680.0	32.318109	-103.929168
PPP 3	663,380.8	479,905.2	32.318713	-103.938259	622,198.5	479,844.9	32.318590	-103.937765
PPP 4	660,724.9	479,904.6	32.318739	-103.940656	619,542.6	479,844.6	32.318616	-103.946363

CORNER COORDINATE TABLE				
CORNER	NAD 83 NME X	NAD 83 NME Y	NAD 27 NME X	NAD 27 NME Y
A	666,035.0	480,252.7	624,852.7	480,192.4
B	663,378.7	480,258.2	622,196.4	480,197.9
C	660,722.2	480,263.7	619,539.9	480,203.4
D	658,061.8	480,255.7	616,879.6	480,195.4
E	655,402.7	480,247.6	614,220.5	480,187.4
F	666,047.3	477,594.6	624,864.9	477,534.4
G	663,394.2	477,601.4	622,211.9	477,541.2
H	660,740.0	477,607.1	619,557.7	477,546.9
I	658,076.8	477,600.8	616,894.5	477,540.6
J	655,414.4	477,593.2	614,232.1	477,533.1

WELL LOCATION INFORMATION

API Number 30-015-	Pool Code 98220	Pool Name PURPLE SAGE; WOLFCAMP (GAS)
Property Code	Property Name NASH UNIT	Well Number 164H
OGRID No. 005380	Operator Name XTO ENERGY, INC.	Ground Level Elevation 3000'
Surface Owner: <input checked="" type="checkbox"/> State <input type="checkbox"/> Fee <input type="checkbox"/> Tribal <input type="checkbox"/> Federal		Mineral Owner: <input checked="" type="checkbox"/> State <input type="checkbox"/> Fee <input type="checkbox"/> Tribal <input checked="" type="checkbox"/> Federal

Surface Location

UL	Section	Township	Range	Lot	Ft. from N/S	Ft. from E/W	Latitude	Longitude	County
A	13	23S	29E		1,075 FNL	986 FEL	32.309398	-103.932848	EDDY

Bottom Hole Location

UL	Section	Township	Range	Lot	Ft. from N/S	Ft. from E/W	Latitude	Longitude	County
M	11	23S	29E		990 FSL	280 FWL	32.315157	-103.963169	EDDY

Dedicated Acres 640.00	Infill or Defining Well INFILL	Defining Well API	Overlapping Spacing Unit (Y/N) Y	Consolidation Code U
Order Numbers:			Well setbacks are under Common Ownership: <input checked="" type="checkbox"/> Yes <input type="checkbox"/> No	

Kick Off Point (KOP)

UL	Section	Township	Range	Lot	Ft. from N/S	Ft. from E/W	Latitude	Longitude	County
	07	23S	30E	4	772 FSL	373 FWL	32.314453	-103.928451	EDDY

First Take Point (FTP)

UL	Section	Township	Range	Lot	Ft. from N/S	Ft. from E/W	Latitude	Longitude	County
P	12	23S	29E		990 FSL	330 FEL	32.315062	-103.930726	EDDY

Last Take Point (LTP)

UL	Section	Township	Range	Lot	Ft. from N/S	Ft. from E/W	Latitude	Longitude	County
M	11	23S	29E		990 FSL	330 FWL	32.315157	-103.963007	EDDY

Unitized Area or Area of Uniform Interest NMNM-070992X	Spacing Unit Type <input checked="" type="checkbox"/> Horizontal <input type="checkbox"/> Vertical	Ground Floor Elevation: 3000'
--	--	---

OPERATOR CERTIFICATIONS

I hereby certify that the information contained herein is true and complete to the best of my knowledge and belief, and, if the well is a vertical or directional well, that this organization either owns a working interest or unleased mineral interest in the land including the proposed bottom hole location or has a right to drill this well at this location pursuant to a contract with an owner of a working interest or unleased mineral interest, or to a voluntary pooling agreement or a compulsory pooling order heretofore entered by the division.

If this well is a horizontal well, I further certify that this organization has received the consent of at least one lessee or owner of a working interest or unleased mineral interest in each tract (in the target pool or formation) in which any part of the well's completed interval will be located or obtained a compulsory pooling order from the division.

L. Srinivas Naveen

6/26/2025

Signature

Date

SURVEYOR CERTIFICATIONS

I hereby certify that the well location shown on this plat was plotted from field notes of actual surveys made by me or under my supervision, and that the same is true and correct to the best of my belief.

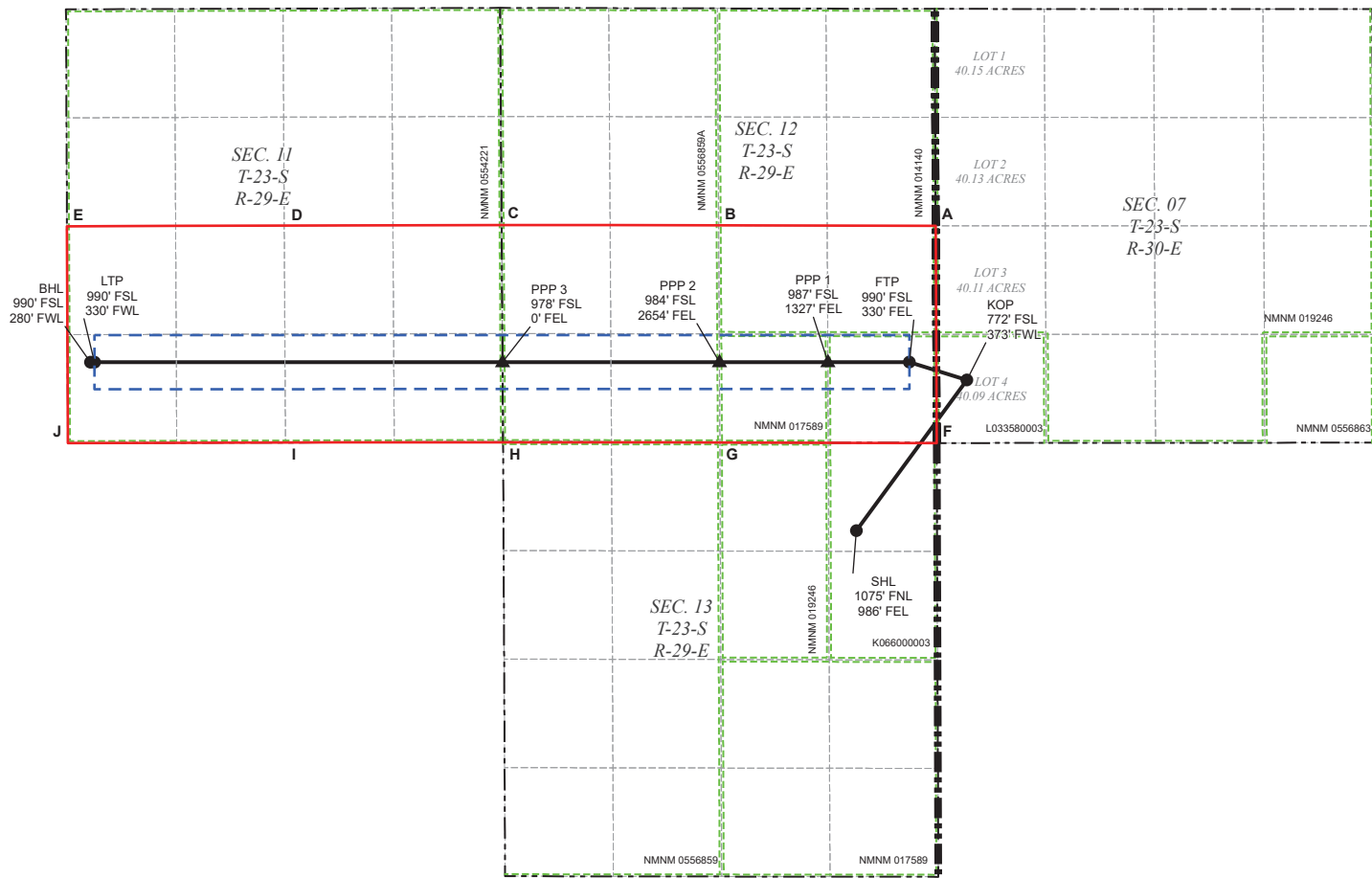


[Handwritten Signature]

Signature and Seal of Professional Surveyor

23786

06-25-2025



LEGEND

- SECTION LINE
-
- 330' BUFFER

WELL COORDINATE TABLE								
WELL	NAD 83 NME X	NAD 83 NME Y	NAD 83 LAT	NAD 83 LON	NAD 27 NME X	NAD 27 NME Y	NAD 27 LAT	NAD 27 LON
SHL	665,065.0	476,522.4	32.309398	-103.932848	623,882.6	476,462.2	32.309274	-103.932355
KOP	666,416.5	478,366.7	32.314453	-103.928451	625,234.1	478,306.5	32.314330	-103.927958
FTP	665,712.7	478,585.5	32.315062	-103.930726	624,530.3	478,525.2	32.314938	-103.930233
LTP	665,740.1	478,584.1	32.315157	-103.963007	614,557.8	478,524.0	32.315034	-103.962513
BHL	655,690.1	478,584.0	32.315157	-103.963169	614,507.8	478,523.8	32.315034	-103.962675
PPP 1	664,715.6	478,585.3	32.315072	-103.933954	623,533.3	478,525.1	32.314948	-103.933461
PPP 2	663,388.6	478,585.2	32.315085	-103.938249	622,206.2	478,524.9	32.314961	-103.937756
PPP 3	660,733.9	478,584.9	32.315111	-103.916842	619,551.6	478,524.6	32.314987	-103.946349

CORNER COORDINATE TABLE				
CORNER	NAD 83 NME X	NAD 83 NME Y	NAD 27 NME X	NAD 27 NME Y
A	666,035.0	480,252.7	624,852.7	480,192.4
B	663,378.7	480,258.2	622,196.4	480,197.9
C	660,722.2	480,263.7	619,539.9	480,203.4
D	658,061.8	480,255.7	616,879.6	480,195.4
E	655,402.7	480,247.6	614,220.5	480,187.4
F	666,047.3	477,594.6	624,864.9	477,534.4
G	663,394.2	477,601.4	622,211.9	477,541.2
H	660,740.0	477,607.1	619,557.7	477,546.9
I	658,076.8	477,600.8	616,894.5	477,540.6
J	655,414.4	477,593.2	614,232.1	477,533.1

Exhibit 2

Nash Pad C N/2 Unit

WELL LOCATION INFORMATION

API Number 30-015-	Pool Code 98220	Pool Name PURPLE SAGE; WOLFCAMP (GAS)
Property Code	Property Name NASH UNIT	Well Number 115H
OGRID No. 005380	Operator Name XTO ENERGY, INC.	Ground Level Elevation 3,010'
Surface Owner: <input checked="" type="checkbox"/> State <input type="checkbox"/> Fee <input type="checkbox"/> Tribal <input type="checkbox"/> Federal		Mineral Owner: <input checked="" type="checkbox"/> State <input type="checkbox"/> Fee <input type="checkbox"/> Tribal <input checked="" type="checkbox"/> Federal

Surface Hole Location

UL	Section	Township	Range	Lot	Ft. from N/S	Ft. from E/W	Latitude	Longitude	County
H	13	23S	29E		2,592 FNL	402 FEL	32.305217	-103.930957	EDDY

Bottom Hole Location

UL	Section	Township	Range	Lot	Ft. from N/S	Ft. from E/W	Latitude	Longitude	County
D	14	23S	29E		990 FNL	280 FWL	32.309715	-103.963161	EDDY

Dedicated Acres 640.00	Infill or Defining Well DEFINING	Defining Well API	Overlapping Spacing Unit (Y/N) N	Consolidation Code U
Order Numbers.			Well Setbacks are under Common Ownership: <input checked="" type="checkbox"/> Yes <input type="checkbox"/> No	

Kick Off Point (KOP)

UL	Section	Township	Range	Lot	Ft. from N/S	Ft. from E/W	Latitude	Longitude	County
	18	23S	30E	1	1,171 FNL	380 FWL	32.309112	-103.928425	EDDY

First Take Point (FTP)

UL	Section	Township	Range	Lot	Ft. from N/S	Ft. from E/W	Latitude	Longitude	County
A	13	23S	29E		990 FNL	330 FEL	32.309619	-103.930723	EDDY

Last Take Point (LTP)

UL	Section	Township	Range	Lot	Ft. from N/S	Ft. from E/W	Latitude	Longitude	County
D	14	23S	29E		990 FNL	330 FWL	32.309714	-103.962999	EDDY

Unitized Area of Area of Interest NMNM-070992X	Spacing Unit Type : <input checked="" type="checkbox"/> Horizontal <input type="checkbox"/> Vertical	Ground Elevation 3,010'
--	--	-----------------------------------

OPERATOR CERTIFICATIONS

I hereby certify that the information contained herein is true and complete to the best of my knowledge and belief, and, if the well is vertical or directional well, that this organization either owns a working interest or unleased mineral interest in the land including the proposed bottom hole location or has a right to drill this at this location pursuant to a contract with an owner of a working interest or unleased mineral interest, or a voluntary pooling agreement or a compulsory pooling order of heretofore entered by the division.

If this well is a horizontal well, I further certify that this organization has received the consent of at least one lessee or owner of a working interest or unleased mineral interest in each tract (in the target pool or information) in which any part of the well's completed interval will be located or obtained a compulsory pooling order from the division.

Jena Austin
Signature

11/19/2024
Date

Jena Austin
Printed Name

SURVEYOR CERTIFICATIONS

I hereby certify that the well location shown on this plat was plotted from field notes of actual surveys made by me or under my supervision, and that the same is true and correct to the best of my belief

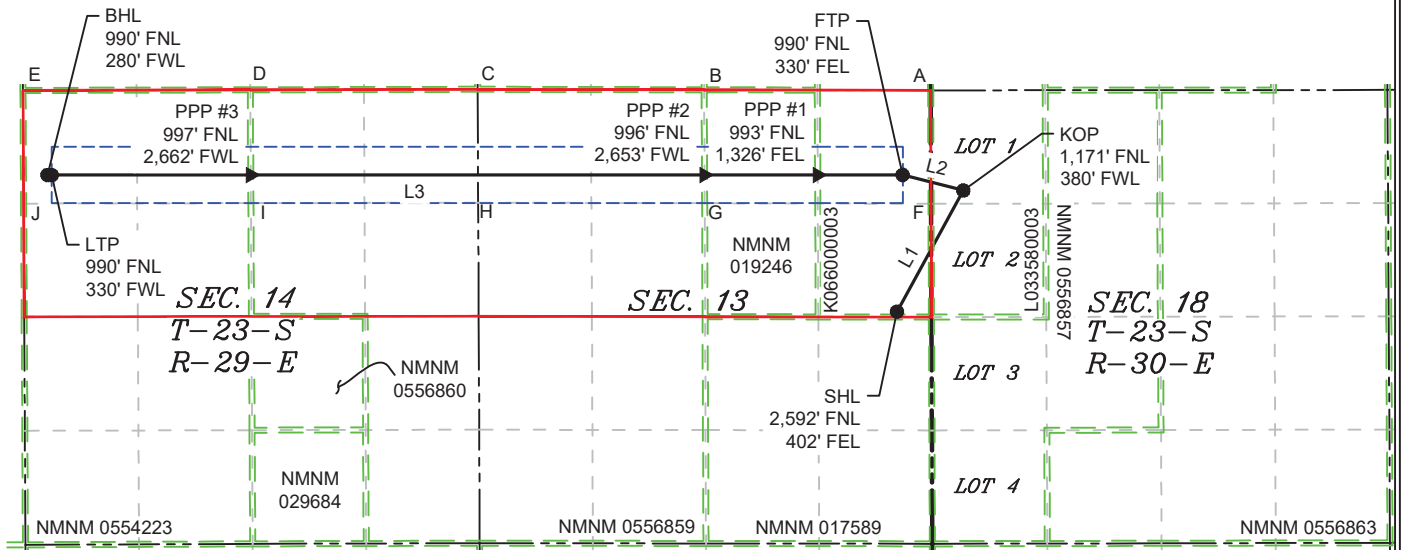
[Signature]
Signature and Seal of Professional Surveyor



MARK DILLON HARP 23786
Certificate Number

Date of Survey

11/18/2024



LEGEND

LINE TABLE		
LINE	AZIMUTH	LENGTH
L1	028°41'28"	1,618.67'
L2	284°20'15"	733.74'
L3	269°59'31"	10,021.47'

LOT ACREAGE TABLE	
SECTION 18 T-23-S R-30-E	
LOT 1 = 40.17 ACRES	
LOT 2 = 40.20 ACRES	
LOT 3 = 40.22 ACRES	
LOT 4 = 40.25 ACRES	

---	SECTION LINE
---	PROPOSED WELL BORE
---	NEW MEXICO MINERAL LEASE
---	330' BUFFER
---	ALLOCATION AREA

COORDINATE TABLE

SHL (NAD 83 NME)			KOP (NAD 83 NME)			FTP (NAD 83 NME)			PPP #1 (NAD 83 NME)			PPP #2 (NAD 83 NME)		
Y =	475,003.8	N	Y =	476,423.8	N	Y =	476,605.5	N	Y =	476,605.3	N	Y =	476,605.2	N
X =	665,654.8	E	X =	666,431.9	E	X =	665,721.0	E	X =	664,724.6	E	X =	663,398.3	E
LAT. =	32.305217	°N	LAT. =	32.309112	°N	LAT. =	32.309619	°N	LAT. =	32.309629	°N	LAT. =	32.309642	°N
LONG. =	103.930957	°W	LONG. =	103.928425	°W	LONG. =	103.930723	°W	LONG. =	103.933948	°W	LONG. =	103.938241	°W

PPP #3 (NAD 83 NME)			LTP (NAD 83 NME)			BHL (NAD 83 NME)		
Y =	476,604.5	N	Y =	476,604.2	N	Y =	476,604.0	N
X =	658,082.0	E	X =	655,749.5	E	X =	655,699.5	E
LAT. =	32.309693	°N	LAT. =	32.309714	°N	LAT. =	32.309715	°N
LONG. =	103.955449	°W	LONG. =	103.962999	°W	LONG. =	103.963161	°W

SHL (NAD 27 NME)			KOP (NAD 27 NME)			FTP (NAD 27 NME)			PPP #1 (NAD 27 NME)			PPP #2 (NAD 27 NME)		
Y =	474,943.7	N	Y =	476,363.6	N	Y =	476,545.3	N	Y =	476,545.1	N	Y =	476,545.0	N
X =	624,472.3	E	X =	625,249.5	E	X =	624,538.6	E	X =	623,542.2	E	X =	622,215.9	E
LAT. =	32.305094	°N	LAT. =	32.308989	°N	LAT. =	32.309496	°N	LAT. =	32.309505	°N	LAT. =	32.309519	°N
LONG. =	103.930465	°W	LONG. =	103.927932	°W	LONG. =	103.930231	°W	LONG. =	103.933456	°W	LONG. =	103.937748	°W

PPP #3 (NAD 27 NME)			LTP (NAD 27 NME)			BHL (NAD 27 NME)		
Y =	476,544.3	N	Y =	476,544.0	N	Y =	476,543.9	N
X =	616,899.6	E	X =	614,567.1	E	X =	614,517.1	E
LAT. =	32.309569	°N	LAT. =	32.309591	°N	LAT. =	32.309591	°N
LONG. =	103.954956	°W	LONG. =	103.962505	°W	LONG. =	103.962667	°W

CORNER COORDINATES (NAD 83 NME)

A - Y =	477,594.7	N	A - X =	666,047.2	E
B - Y =	477,601.4	N	B - X =	663,394.4	E
C - Y =	477,607.4	N	C - X =	660,740.6	E
D - Y =	477,601.0	N	D - X =	658,076.9	E
E - Y =	477,593.4	N	E - X =	655,414.4	E
F - Y =	476,273.3	N	F - X =	663,399.8	E
G - Y =	476,273.3	N	G - X =	663,399.8	E

CORNER COORDINATES (NAD 27 NME)

A - Y =	477,534.5	N	A - X =	624,864.9	E
B - Y =	477,541.2	N	B - X =	622,212.0	E
C - Y =	477,547.2	N	C - X =	619,558.2	E
D - Y =	477,540.8	N	D - X =	616,894.5	E
E - Y =	477,533.2	N	E - X =	614,232.1	E
F - Y =	476,206.8	N	F - X =	624,869.8	E
G - Y =	476,213.1	N	G - X =	622,217.3	E

WELL LOCATION INFORMATION			
API Number 30-015-	Pool Code 98220	Pool Name PURPLE SAGE; WOLFCAMP (GAS)	
Property Code	Property Name NASH UNIT	Well Number 116H	
OGRID No. 005380	Operator Name XTO ENERGY, INC.	Ground Level Elevation 3,014'	
Surface Owner: <input type="checkbox"/> State <input type="checkbox"/> Fee <input type="checkbox"/> Tribal <input checked="" type="checkbox"/> Federal		Mineral Owner: <input checked="" type="checkbox"/> State <input type="checkbox"/> Fee <input type="checkbox"/> Tribal <input checked="" type="checkbox"/> Federal	

Surface Hole Location									
UL	Section	Township	Range	Lot	Ft. from N/S	Ft. from E/W	Latitude	Longitude	County
I	13	23S	29E		2,593 FSL	403 FEL	32.304874	-103.930959	EDDY

Bottom Hole Location									
UL	Section	Township	Range	Lot	Ft. from N/S	Ft. from E/W	Latitude	Longitude	County
E	14	23S	29E		2,310 FNL	280 FWL	32.306086	-103.963154	EDDY

Dedicated Acres 640.00	Infill or Defining Well INFILL	Defining Well API	Overlapping Spacing Unit (Y/N) N	Consolidation Code U
Order Numbers.			Well Setbacks are under Common Ownership: <input checked="" type="checkbox"/> Yes <input type="checkbox"/> No	

Kick Off Point (KOP)									
UL	Section	Township	Range	Lot	Ft. from N/S	Ft. from E/W	Latitude	Longitude	County
	18	23S	30E	2	2,356 FNL	381 FWL	32.305857	-103.928424	EDDY

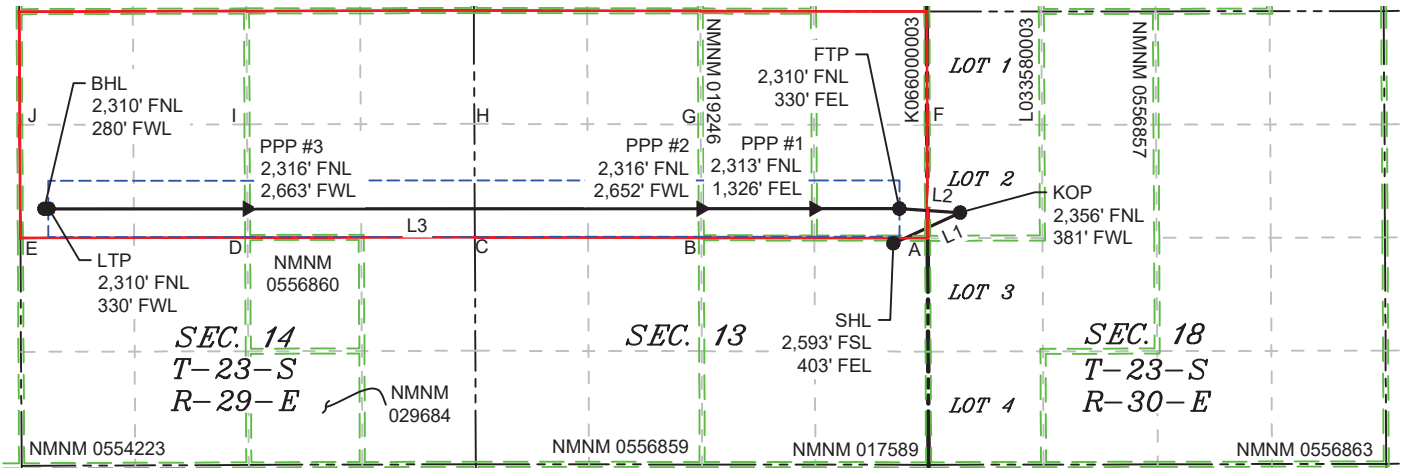
First Take Point (FTP)									
UL	Section	Township	Range	Lot	Ft. from N/S	Ft. from E/W	Latitude	Longitude	County
H	13	23S	29E		2,310 FNL	330 FEL	32.305991	-103.930723	EDDY

Last Take Point (LTP)									
UL	Section	Township	Range	Lot	Ft. from N/S	Ft. from E/W	Latitude	Longitude	County
E	14	23S	29E		2,310 FNL	330 FWL	32.306086	-103.962992	EDDY

Unitized Area of Area of Interest NMNM-070992X	Spacing Unit Type : <input checked="" type="checkbox"/> Horizontal <input type="checkbox"/> Vertical	Ground Elevation 3,014'
--	--	-----------------------------------

<div>OPERATOR CERTIFICATIONS</div> <p><i>I hereby certify that the information contained herein is true and complete to the best of my knowledge and belief, and, if the well is vertical or directional well, that this organization either owns a working interest or unleased mineral interest in the land including the proposed bottom hole location or has a right to drill this at this location pursuant to a contract with an owner of a working interest or unleased mineral interest, or a voluntary pooling agreement or a compulsory pooling order of heretofore entered by the division.</i></p> <p><i>If this well is a horizontal well, I further certify that this organization has received the consent of at least one lessee or owner of a working interest or unleased mineral interest in each tract (in the target pool or information) in which any part of the well's completed interval will be located or obtained a compulsory pooling order from the division.</i></p> <div><div><div>Jena Austin</div><div>Signature</div></div><div><div>11/19/2024</div><div>Date</div></div></div> <div><div>Jena Austin</div><div>Printed Name</div></div>	<div>SURVEYOR CERTIFICATIONS</div> <p><i>I hereby certify that the well location shown on this plat was plotted from field notes of actual surveys made by me or under my supervision, and that the same is true and correct to the best of my belief</i></p> <div><div><div><div></div><div>Signature and Seal of Professional Surveyor</div></div><div><div>MARK DILLON HARP 23786</div><div>Certificate Number</div></div><div><div>11/18/2024</div><div>Date of Survey</div></div></div></div>
--	--

y - NM\005 Nash Unit - Eddy\00 - Nash Unit\Wells\116H C-102.dwg



LEGEND

LINE TABLE		
LINE	AZIMUTH	LENGTH
L1	065°14'37"	861.06'
L2	273°42'20"	712.23'
L3	269°59'31"	10,019.67'

LOT ACREAGE TABLE	
SECTION 18 T-23-S R-30-E	
LOT 1 = 40.17 ACRES	
LOT 2 = 40.20 ACRES	
LOT 3 = 40.22 ACRES	
LOT 4 = 40.25 ACRES	

---	SECTION LINE
---	PROPOSED WELL BORE
---	NEW MEXICO MINERAL LEASE
---	330' BUFFER
---	ALLOCATION AREA

COORDINATE TABLE

SHL (NAD 83 NME)			KOP (NAD 83 NME)			FTP (NAD 83 NME)			PPP #1 (NAD 83 NME)			PPP #2 (NAD 83 NME)		
Y =	474,878.8	N	Y =	475,239.4	N	Y =	475,285.4	N	Y =	475,284.7	N	Y =	475,285.1	N
X =	665,654.8	E	X =	666,436.7	E	X =	665,726.0	E	X =	664,729.8	E	X =	663,403.7	E
LAT. =	32.304874	°N	LAT. =	32.305857	°N	LAT. =	32.305991	°N	LAT. =	32.305999	°N	LAT. =	32.306014	°N
LONG. =	103.930959	°W	LONG. =	103.928424	°W	LONG. =	103.930723	°W	LONG. =	103.933948	°W	LONG. =	103.938240	°W

PPP #3 (NAD 83 NME)			LTP (NAD 83 NME)			BHL (NAD 83 NME)		
Y =	475,284.5	N	Y =	475,284.2	N	Y =	475,284.0	N
X =	658,088.9	E	X =	655,756.3	E	X =	655,706.3	E
LAT. =	32.306064	°N	LAT. =	32.306086	°N	LAT. =	32.306086	°N
LONG. =	103.955442	°W	LONG. =	103.962992	°W	LONG. =	103.963154	°W

SHL (NAD 27 NME)			KOP (NAD 27 NME)			FTP (NAD 27 NME)			PPP #1 (NAD 27 NME)			PPP #2 (NAD 27 NME)		
Y =	474,818.7	N	Y =	475,179.2	N	Y =	475,225.3	N	Y =	475,224.5	N	Y =	475,225.0	N
X =	624,472.3	E	X =	625,254.2	E	X =	624,543.5	E	X =	623,547.4	E	X =	622,221.3	E
LAT. =	32.304750	°N	LAT. =	32.305733	°N	LAT. =	32.305867	°N	LAT. =	32.305875	°N	LAT. =	32.305890	°N
LONG. =	103.930466	°W	LONG. =	103.927931	°W	LONG. =	103.930231	°W	LONG. =	103.933455	°W	LONG. =	103.937747	°W

PPP #3 (NAD 27 NME)			LTP (NAD 27 NME)			BHL (NAD 27 NME)		
Y =	475,224.3	N	Y =	475,224.1	N	Y =	475,223.9	N
X =	616,906.5	E	X =	614,573.9	E	X =	614,523.9	E
LAT. =	32.305941	°N	LAT. =	32.305963	°N	LAT. =	32.305963	°N
LONG. =	103.954949	°W	LONG. =	103.962498	°W	LONG. =	103.962660	°W

CORNER COORDINATES (NAD 83 NME)

A - Y =	474,939.3	N	A - X =	666,057.2	E
B - Y =	474,945.1	N	B - X =	663,405.1	E
C - Y =	474,950.9	N	C - X =	660,754.2	E
D - Y =	474,947.2	N	D - X =	658,090.8	E
E - Y =	474,945.3	N	E - X =	655,428.1	E
F - Y =	476,267.0	N	F - X =	666,052.2	E

CORNER COORDINATES (NAD 27 NME)

A - Y =	474,879.1	N	A - X =	624,874.7	E
B - Y =	474,885.0	N	B - X =	622,222.7	E
C - Y =	474,890.8	N	C - X =	619,571.7	E
D - Y =	474,887.1	N	D - X =	616,908.3	E
E - Y =	474,883.4	N	E - X =	614,245.7	E
F - Y =	476,206.8	N	F - X =	624,869.8	E

WELL LOCATION INFORMATION

API Number 30-015-	Pool Code 98220	Pool Name PURPLE SAGE; WOLFCAMP (GAS)
Property Code	Property Name NASH UNIT	Well Number 165H
OGRID No. 005380	Operator Name XTO ENERGY, INC.	Ground Level Elevation 3,011'
Surface Owner: <input checked="" type="checkbox"/> State <input type="checkbox"/> Fee <input type="checkbox"/> Tribal <input type="checkbox"/> Federal		Mineral Owner: <input checked="" type="checkbox"/> State <input type="checkbox"/> Fee <input type="checkbox"/> Tribal <input checked="" type="checkbox"/> Federal

Surface Hole Location

UL	Section	Township	Range	Lot	Ft. from N/S	Ft. from E/W	Latitude	Longitude	County
H	13	23S	29E		2,592 FNL	372 FEL	32.305217	-103.930860	EDDY

Bottom Hole Location

UL	Section	Township	Range	Lot	Ft. from N/S	Ft. from E/W	Latitude	Longitude	County
D	14	23S	29E		330 FNL	280 FWL	32.311529	-103.963164	EDDY

Dedicated Acres 320.00	Infill or Defining Well INFILL	Defining Well API	Overlapping Spacing Unit (Y/N) N	Consolidation Code U
Order Numbers.			Well Setbacks are under Common Ownership: <input checked="" type="checkbox"/> Yes <input type="checkbox"/> No	

Kick Off Point (KOP)

UL	Section	Township	Range	Lot	Ft. from N/S	Ft. from E/W	Latitude	Longitude	County
	18	23S	30E	1	549 FNL	382 FWL	32.310822	-103.928420	EDDY

First Take Point (FTP)

UL	Section	Township	Range	Lot	Ft. from N/S	Ft. from E/W	Latitude	Longitude	County
A	13	23S	29E		330 FNL	330 FEL	32.311433	-103.930723	EDDY

Last Take Point (LTP)

UL	Section	Township	Range	Lot	Ft. from N/S	Ft. from E/W	Latitude	Longitude	County
D	14	23S	29E		330 FNL	330 FWL	32.311529	-103.963003	EDDY

Unitized Area of Area of Interest NMNM-070992X	Spacing Unit Type : <input checked="" type="checkbox"/> Horizontal <input type="checkbox"/> Vertical	Ground Elevation 3,011'
--	--	-----------------------------------

OPERATOR CERTIFICATIONS

I hereby certify that the information contained herein is true and complete to the best of my knowledge and belief, and, if the well is vertical or directional well, that this organization either owns a working interest or unleased mineral interest in the land including the proposed bottom hole location or has a right to drill this at this location pursuant to a contract with an owner of a working interest or unleased mineral interest, or a voluntary pooling agreement or a compulsory pooling order of heretofore entered by the division.

If this well is a horizontal well, I further certify that this organization has received the consent of at least one lessee or owner of a working interest or unleased mineral interest in each tract (in the target pool or information) in which any part of the well's completed interval will be located or obtained a compulsory pooling order from the division.

Jena Austin
Signature

11/19/2024
Date

Jena Austin
Printed Name

SURVEYOR CERTIFICATIONS

I hereby certify that the well location shown on this plat was plotted from field notes of actual surveys made by me or under my supervision, and that the same is true and correct to the best of my belief

[Signature]
Signature and Seal of Professional Surveyor



MARK DILLON HARP 23786
Certificate Number

Date of Survey

11/18/2024

WELL LOCATION INFORMATION

API Number 30-015-	Pool Code 98220	Pool Name PURPLE SAGE; WOLFCAMP (GAS)
Property Code	Property Name NASH UNIT	Well Number 166H
OGRID No. 005380	Operator Name XTO ENERGY, INC.	Ground Level Elevation 3,014'
Surface Owner: <input type="checkbox"/> State <input type="checkbox"/> Fee <input type="checkbox"/> Tribal <input checked="" type="checkbox"/> Federal		Mineral Owner: <input checked="" type="checkbox"/> State <input type="checkbox"/> Fee <input type="checkbox"/> Tribal <input checked="" type="checkbox"/> Federal

Surface Hole Location

UL	Section	Township	Range	Lot	Ft. from N/S	Ft. from E/W	Latitude	Longitude	County
I	13	23S	29E		2,593 FSL	373 FEL	32.304873	-103.930862	EDDY

Bottom Hole Location

UL	Section	Township	Range	Lot	Ft. from N/S	Ft. from E/W	Latitude	Longitude	County
E	14	23S	29E		1,650 FNL	280 FWL	32.307900	-103.963157	EDDY

Dedicated Acres 640.00	Infill or Defining Well INFILL	Defining Well API	Overlapping Spacing Unit (Y/N) N	Consolidation Code U
Order Numbers.			Well Setbacks are under Common Ownership: <input checked="" type="checkbox"/> Yes <input type="checkbox"/> No	

Kick Off Point (KOP)

UL	Section	Township	Range	Lot	Ft. from N/S	Ft. from E/W	Latitude	Longitude	County
	18	23S	30E	2	1,754 FNL	381 FWL	32.307511	-103.928419	EDDY

First Take Point (FTP)

UL	Section	Township	Range	Lot	Ft. from N/S	Ft. from E/W	Latitude	Longitude	County
H	13	23S	29E		1,650 FNL	330 FEL	32.307805	-103.930723	EDDY

Last Take Point (LTP)

UL	Section	Township	Range	Lot	Ft. from N/S	Ft. from E/W	Latitude	Longitude	County
E	14	23S	29E		1,650 FNL	330 FWL	32.307900	-103.962995	EDDY

Unitized Area of Area of Interest NMNM-070992X	Spacing Unit Type : <input checked="" type="checkbox"/> Horizontal <input type="checkbox"/> Vertical	Ground Elevation 3,014'
--	--	-----------------------------------

OPERATOR CERTIFICATIONS

I hereby certify that the information contained herein is true and complete to the best of my knowledge and belief, and, if the well is vertical or directional well, that this organization either owns a working interest or unleased mineral interest in the land including the proposed bottom hole location or has a right to drill this at this location pursuant to a contract with an owner of a working interest or unleased mineral interest, or a voluntary pooling agreement or a compulsory pooling order of heretofore entered by the division.

If this well is a horizontal well, I further certify that this organization has received the consent of at least one lessee or owner of a working interest or unleased mineral interest in each tract (in the target pool or information) in which any part of the well's completed interval will be located or obtained a compulsory pooling order from the division.

Jena Austin
Signature

11/19/2024
Date

Jena Austin
Printed Name

SURVEYOR CERTIFICATIONS

I hereby certify that the well location shown on this plat was plotted from field notes of actual surveys made by me or under my supervision, and that the same is true and correct to the best of my belief

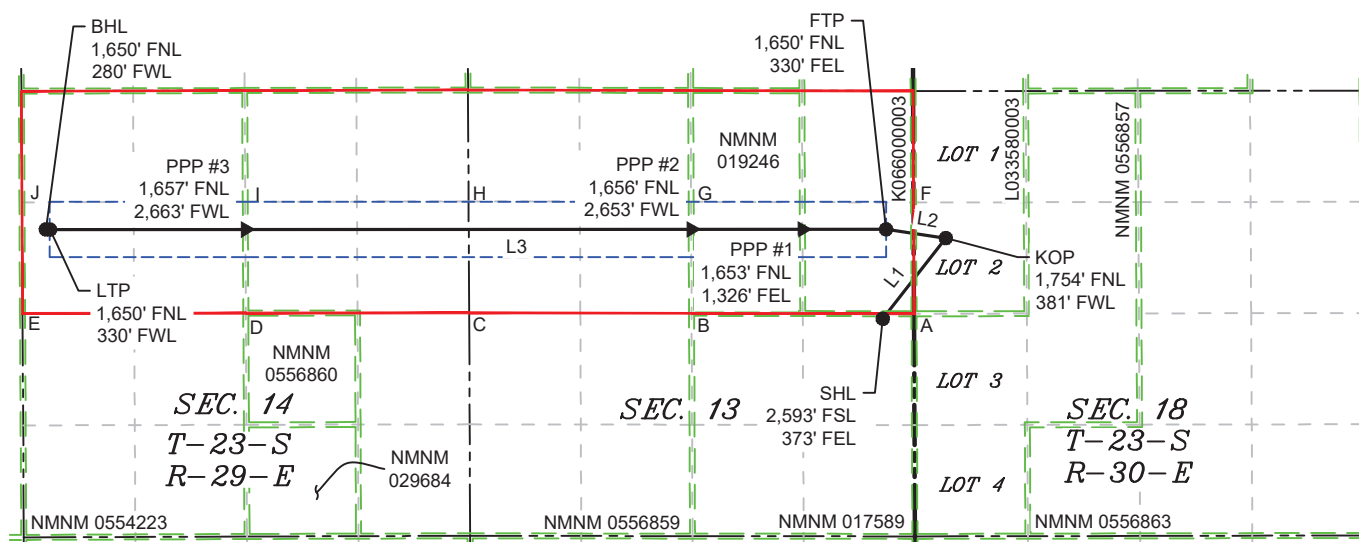
[Signature]
Signature and Seal of Professional Surveyor



MARK DILLON HARP 23786
Certificate Number

Date of Survey

11/18/2024



LEGEND

LINE TABLE		
LINE	AZIMUTH	LENGTH
L1	037°58'27"	1,220.72'
L2	278°19'55"	720.02'
L3	269°59'31"	10,020.57'

LOT ACREAGE TABLE	
SECTION 18	
T-23-S R-30-E	
LOT 1 = 40.17 ACRES	
LOT 2 = 40.20 ACRES	
LOT 3 = 40.22 ACRES	
LOT 4 = 40.25 ACRES	

---	SECTION LINE
---	PROPOSED WELL BORE
---	NEW MEXICO MINERAL LEASE
---	330' BUFFER
---	ALLOCATION AREA

COORDINATE TABLE

SHL (NAD 83 NME)			KOP (NAD 83 NME)			FTP (NAD 83 NME)			PPP #1 (NAD 83 NME)			PPP #2 (NAD 83 NME)		
Y =	474,878.8	N	Y =	475,841.1	N	Y =	475,945.4	N	Y =	475,945.3	N	Y =	475,945.1	N
X =	665,684.8	E	X =	666,435.9	E	X =	665,723.5	E	X =	664,727.2	E	X =	663,401.0	E
LAT. =	32.304873	°N	LAT. =	32.307511	°N	LAT. =	32.307805	°N	LAT. =	32.307815	°N	LAT. =	32.307828	°N
LONG. =	103.930862	°W	LONG. =	103.928419	°W	LONG. =	103.930723	°W	LONG. =	103.933948	°W	LONG. =	103.938241	°W

PPP #3 (NAD 83 NME)			LTP (NAD 83 NME)			BHL (NAD 83 NME)		
Y =	475,944.5	N	Y =	475,944.2	N	Y =	475,944.0	N
X =	658,085.5	E	X =	655,752.9	E	X =	655,702.9	E
LAT. =	32.307879	°N	LAT. =	32.307900	°N	LAT. =	32.307900	°N
LONG. =	103.955446	°W	LONG. =	103.962995	°W	LONG. =	103.963157	°W

SHL (NAD 27 NME)			KOP (NAD 27 NME)			FTP (NAD 27 NME)			PPP #1 (NAD 27 NME)			PPP #2 (NAD 27 NME)		
Y =	474,818.7	N	Y =	475,780.9	N	Y =	475,885.3	N	Y =	475,885.1	N	Y =	475,885.0	N
X =	624,502.3	E	X =	625,253.5	E	X =	624,541.0	E	X =	623,544.8	E	X =	622,218.6	E
LAT. =	32.304750	°N	LAT. =	32.307387	°N	LAT. =	32.307681	°N	LAT. =	32.307691	°N	LAT. =	32.307704	°N
LONG. =	103.930369	°W	LONG. =	103.927926	°W	LONG. =	103.930231	°W	LONG. =	103.933455	°W	LONG. =	103.937748	°W

PPP #3 (NAD 27 NME)			LTP (NAD 27 NME)			BHL (NAD 27 NME)		
Y =	475,884.3	N	Y =	475,884.0	N	Y =	475,883.9	N
X =	616,903.1	E	X =	614,570.5	E	X =	614,520.5	E
LAT. =	32.307755	°N	LAT. =	32.307777	°N	LAT. =	32.307777	°N
LONG. =	103.954952	°W	LONG. =	103.962502	°W	LONG. =	103.962664	°W

CORNER COORDINATES (NAD 83 NME)

A - Y =	474,939.3	N	A - X =	666,057.2	E
B - Y =	474,945.1	N	B - X =	663,405.1	E
C - Y =	474,950.9	N	C - X =	660,754.2	E
D - Y =	474,947.2	N	D - X =	658,090.8	E
E - Y =	475,943.3	N	E - X =	655,428.1	E
F - Y =	476,267.0	N	F - X =	666,052.2	E

CORNER COORDINATES (NAD 27 NME)

A - Y =	474,879.1	N	A - X =	624,874.7	E
B - Y =	474,885.0	N	B - X =	622,222.7	E
C - Y =	474,890.8	N	C - X =	619,571.7	E
D - Y =	474,887.1	N	D - X =	616,908.3	E
E - Y =	474,883.4	N	E - X =	614,245.7	E
F - Y =	476,206.8	N	F - X =	624,869.8	E

WELL LOCATION INFORMATION

API Number 30-015-	Pool Code 98220	Pool Name PURPLE SAGE; WOLFCAMP (GAS)
Property Code	Property Name NASH UNIT	Well Number 175H
OGRID No. 005380	Operator Name XTO ENERGY, INC.	Ground Level Elevation 3,012'
Surface Owner: <input checked="" type="checkbox"/> State <input type="checkbox"/> Fee <input type="checkbox"/> Tribal <input type="checkbox"/> Federal		Mineral Owner: <input checked="" type="checkbox"/> State <input type="checkbox"/> Fee <input type="checkbox"/> Tribal <input checked="" type="checkbox"/> Federal

Surface Hole Location

UL	Section	Township	Range	Lot	Ft. from N/S	Ft. from E/W	Latitude	Longitude	County
H	13	23S	29E		2,592 FNL	342 FEL	32.305217	-103.930763	EDDY

Bottom Hole Location

UL	Section	Township	Range	Lot	Ft. from N/S	Ft. from E/W	Latitude	Longitude	County
D	14	23S	29E		990 FNL	280 FWL	32.309715	-103.963161	EDDY

Dedicated Acres 640.00	Infill or Defining Well INFILL	Defining Well API	Overlapping Spacing Unit (Y/N) N	Consolidation Code U
Order Numbers.			Well Setbacks are under Common Ownership: <input checked="" type="checkbox"/> Yes <input type="checkbox"/> No	

Kick Off Point (KOP)

UL	Section	Township	Range	Lot	Ft. from N/S	Ft. from E/W	Latitude	Longitude	County
	18	23S	30E	1	1,134 FNL	383 FWL	32.309213	-103.928416	EDDY

First Take Point (FTP)

UL	Section	Township	Range	Lot	Ft. from N/S	Ft. from E/W	Latitude	Longitude	County
A	13	23S	29E		990 FNL	330 FEL	32.309619	-103.930723	EDDY

Last Take Point (LTP)

UL	Section	Township	Range	Lot	Ft. from N/S	Ft. from E/W	Latitude	Longitude	County
D	14	23S	29E		990 FNL	330 FWL	32.309714	-103.962999	EDDY

Unitized Area of Area of Interest NMNM-070992X	Spacing Unit Type : <input checked="" type="checkbox"/> Horizontal <input type="checkbox"/> Vertical	Ground Elevation 3,012'
--	--	-----------------------------------

OPERATOR CERTIFICATIONS

I hereby certify that the information contained herein is true and complete to the best of my knowledge and belief, and, if the well is vertical or directional well, that this organization either owns a working interest or unleased mineral interest in the land including the proposed bottom hole location or has a right to drill this at this location pursuant to a contract with an owner of a working interest or unleased mineral interest, or a voluntary pooling agreement or a compulsory pooling order of heretofore entered by the division.

If this well is a horizontal well, I further certify that this organization has received the consent of at least one lessee or owner of a working interest or unleased mineral interest in each tract (in the target pool or information) in which any part of the well's completed interval will be located or obtained a compulsory pooling order from the division.

Jena Austin
Signature

11/19/2024
Date

Jena Austin
Printed Name

SURVEYOR CERTIFICATIONS

I hereby certify that the well location shown on this plat was plotted from field notes of actual surveys made by me or under my supervision, and that the same is true and correct to the best of my belief

[Signature]

Signature and Seal of Professional Surveyor

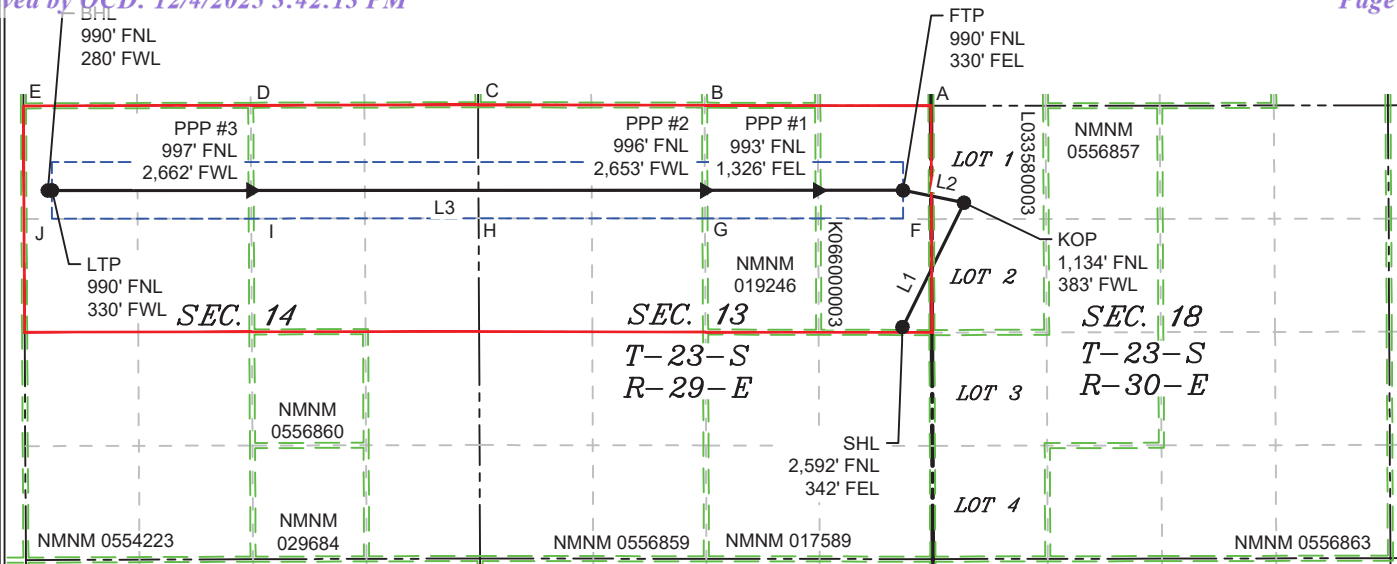


MARK DILLON HARP 23786

Certificate Number

Date of Survey

11/18/2024



COORDINATE TABLE

SHL (NAD 83 NME)			SHL (NAD 27 NME)		
Y =	475,003.8	N	Y =	474,943.7	N
X =	665,714.8	E	X =	624,532.3	E
LAT. =	32.305217	°N	LAT. =	32.305093	°N
LONG. =	103.930763	°W	LONG. =	103.930270	°W
KOP (NAD 83 NME)			KOP (NAD 27 NME)		
Y =	476,460.5	N	Y =	476,400.3	N
X =	666,434.3	E	X =	625,251.9	E
LAT. =	32.309213	°N	LAT. =	32.309090	°N
LONG. =	103.928416	°W	LONG. =	103.927924	°W
FTP (NAD 83 NME)			FTP (NAD 27 NME)		
Y =	476,605.5	N	Y =	476,545.3	N
X =	665,721.0	E	X =	624,538.6	E
LAT. =	32.309619	°N	LAT. =	32.309496	°N
LONG. =	103.930723	°W	LONG. =	103.930231	°W
PPP #1 (NAD 83 NME)			PPP #1 (NAD 27 NME)		
Y =	476,605.3	N	Y =	476,545.1	N
X =	664,724.6	E	X =	623,542.2	E
LAT. =	32.309629	°N	LAT. =	32.309505	°N
LONG. =	103.933948	°W	LONG. =	103.933456	°W
PPP #2 (NAD 83 NME)			PPP #2 (NAD 27 NME)		
Y =	476,605.2	N	Y =	476,545.0	N
X =	663,398.3	E	X =	622,215.9	E
LAT. =	32.309642	°N	LAT. =	32.309519	°N
LONG. =	103.938241	°W	LONG. =	103.937748	°W
PPP #3 (NAD 83 NME)			PPP #3 (NAD 27 NME)		
Y =	476,604.5	N	Y =	476,544.3	N
X =	658,082.0	E	X =	616,899.6	E
LAT. =	32.309693	°N	LAT. =	32.309569	°N
LONG. =	103.955449	°W	LONG. =	103.954956	°W
LTP (NAD 83 NME)			LTP (NAD 27 NME)		
Y =	476,604.2	N	Y =	476,544.0	N
X =	655,749.5	E	X =	614,567.1	E
LAT. =	32.309714	°N	LAT. =	32.309591	°N
LONG. =	103.962999	°W	LONG. =	103.962505	°W
BHL (NAD 83 NME)			BHL (NAD 27 NME)		
Y =	476,604.0	N	Y =	476,543.9	N

LEGEND

---	SECTION LINE
---	PROPOSED WELL BORE
---	NEW MEXICO MINERAL LEASE
---	330' BUFFER
---	ALLOCATION AREA

LINE TABLE

LINE	AZIMUTH	LENGTH
L1	026°17'13"	1,624.68'
L2	281°29'12"	727.89'
L3	269°59'31"	10,021.47'

LOT ACREAGE TABLE

SECTION 18
T-23-S R-30-E
LOT 1 = 40.17 ACRES
LOT 2 = 40.20 ACRES
LOT 3 = 40.22 ACRES
LOT 4 = 40.25 ACRES

CORNER COORDINATES (NAD 83 NME)

A - Y =	477,594.7	N	A - X =	666,047.2	E
B - Y =	477,601.4	N	B - X =	663,394.4	E
C - Y =	477,607.4	N	C - X =	660,740.6	E
D - Y =	477,601.0	N	D - X =	658,076.9	E
E - Y =	477,593.4	N	E - X =	655,414.4	E
F - Y =	476,267.0	N	F - X =	666,052.2	E
G - Y =	476,273.3	N	G - X =	663,399.8	E
H - Y =	476,279.1	N	H - X =	660,747.4	E
I - Y =	476,274.1	N	I - X =	658,083.8	E
J - Y =	476,268.4	N	J - X =	655,421.3	E

CORNER COORDINATES (NAD 27 NME)

A - Y =	477,534.5	N	A - X =	624,864.9	E
B - Y =	477,541.2	N	B - X =	622,212.0	E
C - Y =	477,547.2	N	C - X =	619,558.2	E
D - Y =	477,540.8	N	D - X =	616,894.5	E
E - Y =	477,533.2	N	E - X =	614,232.1	E
F - Y =	476,206.8	N	F - X =	624,869.8	E
G - Y =	476,213.1	N	G - X =	622,217.3	E
H - Y =	476,219.0	N	H - X =	619,565.0	E
I - Y =	476,214.0	N	I - X =	616,001.4	E
J - Y =	476,208.0	N	J - X =	613,001.4	E

WELL LOCATION INFORMATION

API Number 30-015-	Pool Code 98220	Pool Name PURPLE SAGE; WOLFCAMP (GAS)
Property Code	Property Name NASH UNIT	Well Number 176H
OGRID No. 005380	Operator Name XTO ENERGY, INC.	Ground Level Elevation 3,014'
Surface Owner: <input type="checkbox"/> State <input type="checkbox"/> Fee <input type="checkbox"/> Tribal <input checked="" type="checkbox"/> Federal		Mineral Owner: <input checked="" type="checkbox"/> State <input type="checkbox"/> Fee <input type="checkbox"/> Tribal <input checked="" type="checkbox"/> Federal

Surface Hole Location

UL	Section	Township	Range	Lot	Ft. from N/S	Ft. from E/W	Latitude	Longitude	County
I	13	23S	29E		2,593 FSL	343 FEL	32.304873	-103.930765	EDDY

Bottom Hole Location

UL	Section	Township	Range	Lot	Ft. from N/S	Ft. from E/W	Latitude	Longitude	County
E	14	23S	29E		2,310 FNL	280 FWL	32.306086	-103.963154	EDDY

Dedicated Acres 640.00	Infill or Defining Well INFILL	Defining Well API	Overlapping Spacing Unit (Y/N) N	Consolidation Code U
Order Numbers.			Well Setbacks are under Common Ownership: <input checked="" type="checkbox"/> Yes <input type="checkbox"/> No	

Kick Off Point (KOP)

UL	Section	Township	Range	Lot	Ft. from N/S	Ft. from E/W	Latitude	Longitude	County
	18	23S	30E	2	2,346 FNL	383 FWL	32.305882	-103.928415	EDDY

First Take Point (FTP)

UL	Section	Township	Range	Lot	Ft. from N/S	Ft. from E/W	Latitude	Longitude	County
H	13	23S	29E		2,310 FNL	330 FEL	32.305991	-103.930723	EDDY

Last Take Point (LTP)

UL	Section	Township	Range	Lot	Ft. from N/S	Ft. from E/W	Latitude	Longitude	County
E	14	23S	29E		2,310 FNL	330 FWL	32.306086	-103.962992	EDDY

Unitized Area of Area of Interest NMNM-070992X	Spacing Unit Type : <input checked="" type="checkbox"/> Horizontal <input type="checkbox"/> Vertical	Ground Elevation 3,014'
--	--	-----------------------------------

OPERATOR CERTIFICATIONS

I hereby certify that the information contained herein is true and complete to the best of my knowledge and belief, and, if the well is vertical or directional well, that this organization either owns a working interest or unleased mineral interest in the land including the proposed bottom hole location or has a right to drill this at this location pursuant to a contract with an owner of a working interest or unleased mineral interest, or a voluntary pooling agreement or a compulsory pooling order of heretofore entered by the division.

If this well is a horizontal well, I further certify that this organization has received the consent of at least one lessee or owner of a working interest or unleased mineral interest in each tract (in the target pool or information) in which any part of the well's completed interval will be located or obtained a compulsory pooling order from the division.

Jena Austin 11/19/2024
Signature Date

Printed Name

SURVEYOR CERTIFICATIONS

I hereby certify that the well location shown on this plat was plotted from field notes of actual surveys made by me or under my supervision, and that the same is true and correct to the best of my belief

[Signature]
Signature and Seal of Professional Surveyor

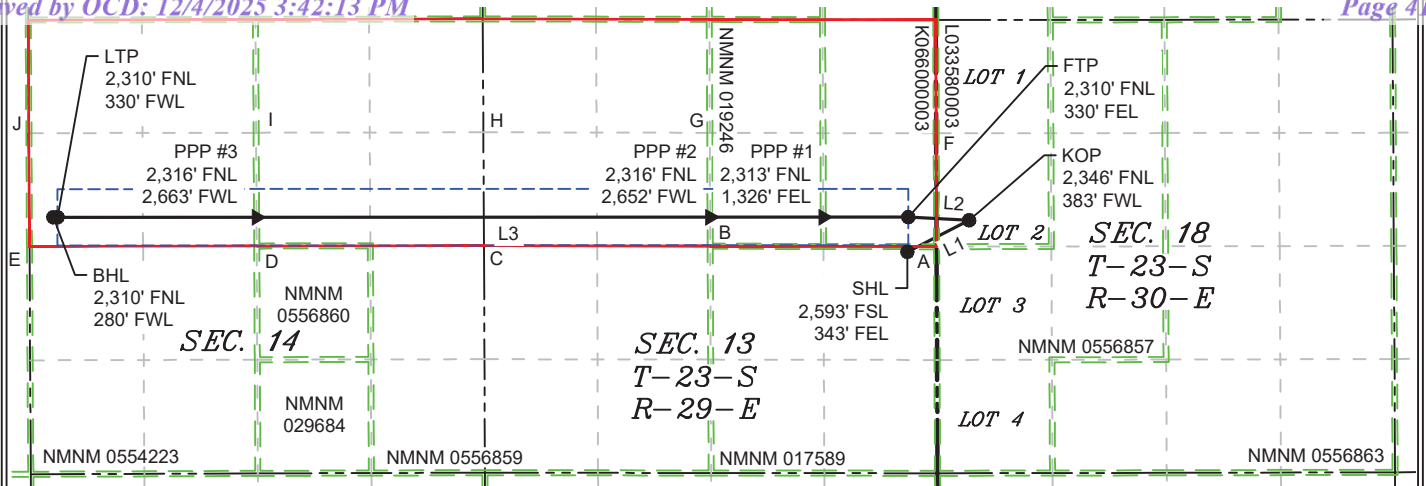


MARK DILLON HARP 23786

Certificate Number

11/18/2024

Date of Survey



COORDINATE TABLE

SHL (NAD 83 NME)			SHL (NAD 27 NME)		
Y =	474,878.8	N	Y =	474,818.7	N
X =	665,714.8	E	X =	624,532.3	E
LAT. =	32.304873	°N	LAT. =	32.304749	°N
LONG. =	103.930765	°W	LONG. =	103.930272	°W
KOP (NAD 83 NME)			KOP (NAD 27 NME)		
Y =	475,248.7	N	Y =	475,188.6	N
X =	666,439.2	E	X =	625,256.7	E
LAT. =	32.305882	°N	LAT. =	32.305759	°N
LONG. =	103.928415	°W	LONG. =	103.927923	°W
FTP (NAD 83 NME)			FTP (NAD 27 NME)		
Y =	475,285.4	N	Y =	475,225.3	N
X =	665,726.0	E	X =	624,543.5	E
LAT. =	32.305991	°N	LAT. =	32.305867	°N
LONG. =	103.930723	°W	LONG. =	103.930231	°W
PPP #1 (NAD 83 NME)			PPP #1 (NAD 27 NME)		
Y =	475,284.7	N	Y =	475,224.5	N
X =	664,729.8	E	X =	623,547.4	E
LAT. =	32.305999	°N	LAT. =	32.305875	°N
LONG. =	103.933948	°W	LONG. =	103.933455	°W
PPP #2 (NAD 83 NME)			PPP #2 (NAD 27 NME)		
Y =	475,285.1	N	Y =	475,225.0	N
X =	663,403.7	E	X =	622,221.3	E
LAT. =	32.306014	°N	LAT. =	32.305890	°N
LONG. =	103.938240	°W	LONG. =	103.937747	°W
PPP #3 (NAD 83 NME)			PPP #3 (NAD 27 NME)		
Y =	475,284.5	N	Y =	475,224.3	N
X =	658,088.9	E	X =	616,906.5	E
LAT. =	32.306064	°N	LAT. =	32.305941	°N
LONG. =	103.955442	°W	LONG. =	103.954949	°W
LTP (NAD 83 NME)			LTP (NAD 27 NME)		
Y =	475,284.2	N	Y =	475,224.1	N
X =	655,756.3	E	X =	614,573.9	E
LAT. =	32.306086	°N	LAT. =	32.305963	°N
LONG. =	103.962992	°W	LONG. =	103.962498	°W
BHL (NAD 83 NME)			BHL (NAD 27 NME)		
Y =	475,284.0	N	Y =	475,223.0	N
X =	655,756.0	E	X =	614,573.0	E
LAT. =	32.306086	°N	LAT. =	32.305963	°N
LONG. =	103.962992	°W	LONG. =	103.962498	°W

LEGEND

---	SECTION LINE
—	PROPOSED WELL BORE
---	NEW MEXICO MINERAL LEASE
---	330' BUFFER
---	ALLOCATION AREA

LINE TABLE

LINE	AZIMUTH	LENGTH
L1	062°56'57"	813.36'
L2	272°56'47"	714.14'
L3	269°59'31"	10,019.67'

LOT ACREAGE TABLE

SECTION 18
T-23-S R-30-E
LOT 1 = 40.17 ACRES
LOT 2 = 40.20 ACRES
LOT 3 = 40.22 ACRES
LOT 4 = 40.25 ACRES

CORNER COORDINATES (NAD 83 NME)

A - Y =	474,939.3	N	A - X =	666,057.2	E
B - Y =	474,945.1	N	B - X =	663,405.1	E
C - Y =	474,950.9	N	C - X =	660,754.2	E
D - Y =	474,947.2	N	D - X =	658,090.8	E
E - Y =	474,943.5	N	E - X =	655,428.1	E
F - Y =	476,267.0	N	F - X =	666,052.2	E
G - Y =	476,273.3	N	G - X =	663,399.8	E
H - Y =	476,279.1	N	H - X =	660,747.4	E
I - Y =	476,274.1	N	I - X =	658,083.8	E
J - Y =	476,268.4	N	J - X =	655,421.3	E

CORNER COORDINATES (NAD 27 NME)

A - Y =	474,879.1	N	A - X =	624,874.7	E
B - Y =	474,885.0	N	B - X =	622,222.7	E
C - Y =	474,890.8	N	C - X =	619,571.7	E
D - Y =	474,887.1	N	D - X =	616,908.3	E
E - Y =	474,883.4	N	E - X =	614,245.7	E
F - Y =	476,206.8	N	F - X =	624,869.8	E
G - Y =	476,213.1	N	G - X =	622,217.3	E
H - Y =	476,219.0	N	H - X =	619,565.0	E
I - Y =	476,214.0	N	I - X =	616,901.4	E
J - Y =	476,208.3	N	J - X =	614,238.9	E

Exhibit 2

Nash Pad C S/2 Unit

WELL LOCATION INFORMATION

API Number 30-015-	Pool Code 98220	Pool Name PURPLE SAGE; WOLFCAMP (GAS)
Property Code	Property Name NASH UNIT	Well Number 167H
OGRID No. 005380	Operator Name XTO ENERGY, INC.	Ground Level Elevation 3,010'
Surface Owner: <input type="checkbox"/> State <input type="checkbox"/> Fee <input type="checkbox"/> Tribal <input checked="" type="checkbox"/> Federal		Mineral Owner: <input checked="" type="checkbox"/> State <input type="checkbox"/> Fee <input type="checkbox"/> Tribal <input checked="" type="checkbox"/> Federal

Surface Hole Location

UL	Section	Township	Range	Lot	Ft. from N/S	Ft. from E/W	Latitude	Longitude	County
I	13	23S	29E		2,468 FSL	403 FEL	32.304530	-103.930960	EDDY

Bottom Hole Location

UL	Section	Township	Range	Lot	Ft. from N/S	Ft. from E/W	Latitude	Longitude	County
L	14	23S	29E		2,310 FSL	280 FWL	32.304165	-103.963149	EDDY

Dedicated Acres 640.00	Infill or Defining Well DEFINING	Defining Well API	Overlapping Spacing Unit (Y/N) N	Consolidation Code U
Order Numbers.			Well Setbacks are under Common Ownership: <input checked="" type="checkbox"/> Yes <input type="checkbox"/> No	

Kick Off Point (KOP)

UL	Section	Township	Range	Lot	Ft. from N/S	Ft. from E/W	Latitude	Longitude	County
	18	23S	30E	3	2,326 FSL	382 FWL	32.304133	-103.928418	EDDY

First Take Point (FTP)

UL	Section	Township	Range	Lot	Ft. from N/S	Ft. from E/W	Latitude	Longitude	County
I	13	23S	29E		2,310 FSL	330 FEL	32.304096	-103.930723	EDDY

Last Take Point (LTP)

UL	Section	Township	Range	Lot	Ft. from N/S	Ft. from E/W	Latitude	Longitude	County
L	14	23S	29E		2,310 FSL	330 FWL	32.304165	-103.962987	EDDY

Unitized Area of Area of Interest NMNM-070992X	Spacing Unit Type : <input checked="" type="checkbox"/> Horizontal <input type="checkbox"/> Vertical	Ground Elevation 3,010'
--	--	-----------------------------------

OPERATOR CERTIFICATIONS

I hereby certify that the information contained herein is true and complete to the best of my knowledge and belief, and, if the well is vertical or directional well, that this organization either owns a working interest or unleased mineral interest in the land including the proposed bottom hole location or has a right to drill this at this location pursuant to a contract with an owner of a working interest or unleased mineral interest, or a voluntary pooling agreement or a compulsory pooling order of heretofore entered by the division.

If this well is a horizontal well, I further certify that this organization has received the consent of at least one lessee or owner of a working interest or unleased mineral interest in each tract (in the target pool or information) in which any part of the well's completed interval will be located or obtained a compulsory pooling order from the division.

Jena Austin
Signature

11/19/2024
Date

Printed Name
Jena Austin

SURVEYOR CERTIFICATIONS

I hereby certify that the well location shown on this plat was plotted from field notes of actual surveys made by me or under my supervision, and that the same is true and correct to the best of my belief

[Signature]
Signature and Seal of Professional Surveyor

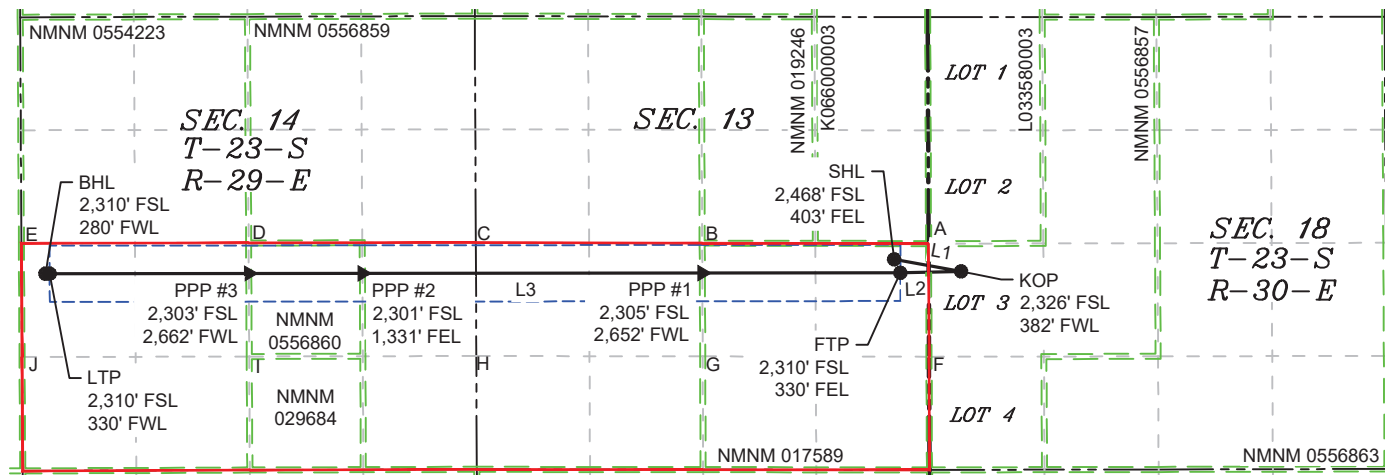


MARK DILLON HARP 23786

Certificate Number

Date of Survey

11/18/2024



LEGEND

LINE TABLE		
LINE	AZIMUTH	LENGTH
L1	100°12'14"	798.59'
L2	268°41'40"	712.27'
L3	269°56'15"	10,018.59'

LOT ACREAGE TABLE	
SECTION 18 T-23-S R-30-E	
LOT 1 = 40.17 ACRES	
LOT 2 = 40.20 ACRES	
LOT 3 = 40.22 ACRES	
LOT 4 = 40.25 ACRES	

---	SECTION LINE
---	PROPOSED WELL BORE
---	NEW MEXICO MINERAL LEASE
---	330' BUFFER
---	ALLOCATION AREA

COORDINATE TABLE

SHL (NAD 83 NME)			KOP (NAD 83 NME)			FTP (NAD 83 NME)			PPP #1 (NAD 83 NME)			PPP #2 (NAD 83 NME)		
Y =	474,753.8	N	Y =	474,612.4	N	Y =	474,596.1	N	Y =	474,593.6	N	Y =	474,589.3	N
X =	665,654.8	E	X =	666,440.7	E	X =	665,728.6	E	X =	663,406.5	E	X =	659,423.7	E
LAT. =	32.304530	°N	LAT. =	32.304133	°N	LAT. =	32.304096	°N	LAT. =	32.304113	°N	LAT. =	32.304141	°N
LONG. =	103.930960	°W	LONG. =	103.928418	°W	LONG. =	103.930723	°W	LONG. =	103.938239	°W	LONG. =	103.951130	°W

PPP #3 (NAD 83 NME)			LTP (NAD 83 NME)			BHL (NAD 83 NME)		
Y =	474,587.9	N	Y =	474,585.4	N	Y =	474,585.2	N
X =	658,092.5	E	X =	655,760.1	E	X =	655,710.1	E
LAT. =	32.304150	°N	LAT. =	32.304165	°N	LAT. =	32.304165	°N
LONG. =	103.955438	°W	LONG. =	103.962987	°W	LONG. =	103.963149	°W

SHL (NAD 27 NME)			KOP (NAD 27 NME)			FTP (NAD 27 NME)			PPP #1 (NAD 27 NME)			PPP #2 (NAD 27 NME)		
Y =	474,693.7	N	Y =	474,552.2	N	Y =	474,536.0	N	Y =	474,533.5	N	Y =	474,529.2	N
X =	624,472.3	E	X =	625,258.3	E	X =	624,546.2	E	X =	622,224.1	E	X =	618,241.3	E
LAT. =	32.304406	°N	LAT. =	32.304009	°N	LAT. =	32.303972	°N	LAT. =	32.303989	°N	LAT. =	32.304017	°N
LONG. =	103.930468	°W	LONG. =	103.927926	°W	LONG. =	103.930231	°W	LONG. =	103.937746	°W	LONG. =	103.950636	°W

PPP #3 (NAD 27 NME)			LTP (NAD 27 NME)			BHL (NAD 27 NME)		
Y =	474,527.8	N	Y =	474,525.3	N	Y =	474,525.1	N
X =	616,910.1	E	X =	614,577.6	E	X =	614,527.6	E
LAT. =	32.304026	°N	LAT. =	32.304042	°N	LAT. =	32.304042	°N
LONG. =	103.954945	°W	LONG. =	103.962494	°W	LONG. =	103.962656	°W

CORNER COORDINATES (NAD 83 NME)

A - Y =	474,939.3	N	A - X =	666,057.2	E
B - Y =	474,945.1	N	B - X =	663,405.1	E
C - Y =	474,950.9	N	C - X =	660,754.2	E
D - Y =	474,947.2	N	D - X =	658,090.8	E
E - Y =	474,942.1	N	E - X =	665,428.1	E
F - Y =	473,612.5	N	F - X =	666,062.6	E

CORNER COORDINATES (NAD 27 NME)

A - Y =	474,879.1	N	A - X =	624,874.7	E
B - Y =	474,885.0	N	B - X =	622,222.7	E
C - Y =	474,890.8	N	C - X =	619,571.7	E
D - Y =	474,887.1	N	D - X =	616,908.3	E
E - Y =	474,883.4	N	E - X =	614,245.7	E
F - Y =	473,552.4	N	F - X =	624,880.1	E

Exhibit 2

Nash Pad D S/2 Unit

WELL LOCATION INFORMATION

API Number 30-015-	Pool Code 98220	Pool Name PURPLE SAGE; WOLFCAMP (GAS)
Property Code	Property Name NASH UNIT	Well Number 117H
OGRID No. 005380	Operator Name XTO ENERGY, INC.	Ground Level Elevation 3,001'
Surface Owner: <input type="checkbox"/> State <input type="checkbox"/> Fee <input type="checkbox"/> Tribal <input checked="" type="checkbox"/> Federal		Mineral Owner: <input checked="" type="checkbox"/> State <input type="checkbox"/> Fee <input type="checkbox"/> Tribal <input checked="" type="checkbox"/> Federal

Surface Hole Location

UL	Section	Township	Range	Lot	Ft. from N/S	Ft. from E/W	Latitude	Longitude	County
I	13	23S	29E		1,904 FSL	1,072 FEL	32.302991	-103.933124	EDDY

Bottom Hole Location

UL	Section	Township	Range	Lot	Ft. from N/S	Ft. from E/W	Latitude	Longitude	County
L	14	23S	29E		1,650 FSL	280 FWL	32.302351	-103.963145	EDDY

Dedicated Acres 640.00	Infill or Defining Well INFILL	Defining Well API	Overlapping Spacing Unit (Y/N) N	Consolidation Code U
Order Numbers.			Well Setbacks are under Common Ownership: <input checked="" type="checkbox"/> Yes <input type="checkbox"/> No	

Kick Off Point (KOP)

UL	Section	Township	Range	Lot	Ft. from N/S	Ft. from E/W	Latitude	Longitude	County
	18	23S	30E	3	1,683 FSL	367 FWL	32.302366	-103.928467	EDDY

First Take Point (FTP)

UL	Section	Township	Range	Lot	Ft. from N/S	Ft. from E/W	Latitude	Longitude	County
I	13	23S	29E		1,650 FSL	330 FEL	32.302282	-103.930723	EDDY

Last Take Point (LTP)

UL	Section	Township	Range	Lot	Ft. from N/S	Ft. from E/W	Latitude	Longitude	County
L	14	23S	29E		1,650 FSL	330 FWL	32.302351	-103.962983	EDDY

Unitized Area of Area of Interest NMNM-070992X	Spacing Unit Type : <input checked="" type="checkbox"/> Horizontal <input type="checkbox"/> Vertical	Ground Elevation 3,001'
--	--	-----------------------------------

OPERATOR CERTIFICATIONS

I hereby certify that the information contained herein is true and complete to the best of my knowledge and belief, and, if the well is vertical or directional well, that this organization either owns a working interest or unleased mineral interest in the land including the proposed bottom hole location or has a right to drill this at this location pursuant to a contract with an owner of a working interest or unleased mineral interest, or a voluntary pooling agreement or a compulsory pooling order of heretofore entered by the division.

If this well is a horizontal well, I further certify that this organization has received the consent of at least one lessee or owner of a working interest or unleased mineral interest in each tract (in the target pool or information) in which any part of the well's completed interval will be located or obtained a compulsory pooling order from the division.

Jena Austin
Signature

11/19/2024
Date

Jena Austin
Printed Name

SURVEYOR CERTIFICATIONS

I hereby certify that the well location shown on this plat was plotted from field notes of actual surveys made by me or under my supervision, and that the same is true and correct to the best of my belief

[Signature]
Signature and Seal of Professional Surveyor

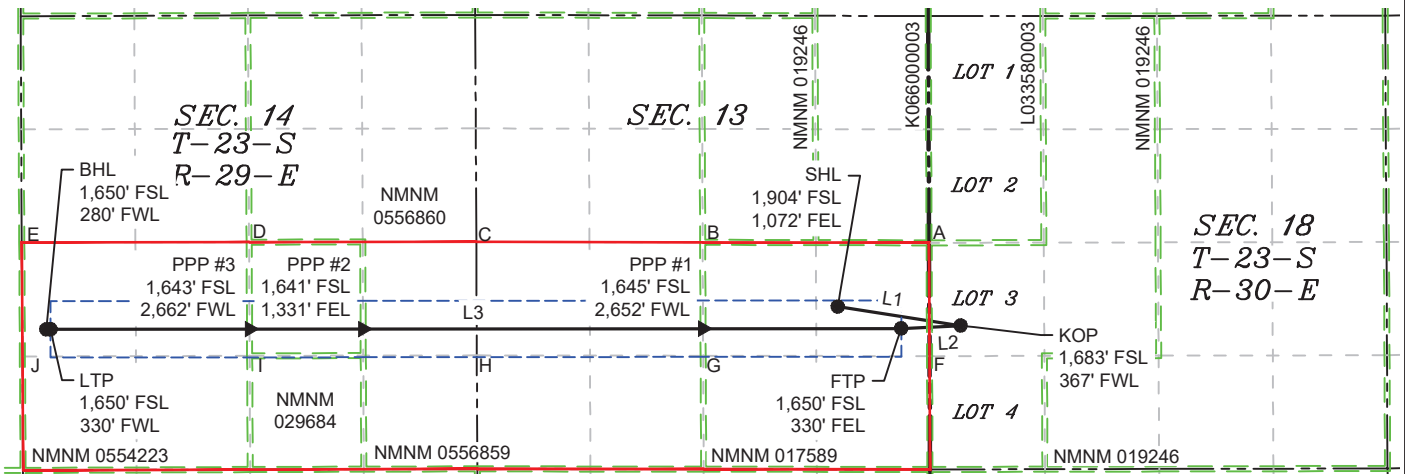


MARK DILLON HARP 23786

Certificate Number

Date of Survey

11/18/2024



LEGEND

LINE TABLE		
LINE	AZIMUTH	LENGTH
L1	098°46'01"	1,456.69'
L2	267°15'36"	697.59'
L3	269°56'15"	10,017.51'

LOT ACREAGE TABLE	
SECTION 18 T-23-S R-30-E	
LOT 1 = 40.17 ACRES	
LOT 2 = 40.20 ACRES	
LOT 3 = 40.22 ACRES	
LOT 4 = 40.25 ACRES	

---	SECTION LINE
---	PROPOSED WELL BORE
---	NEW MEXICO MINERAL LEASE
---	330' BUFFER
---	ALLOCATION AREA

COORDINATE TABLE

SHL (NAD 83 NME)				KOP (NAD 83 NME)				FTP (NAD 83 NME)				PPP #1 (NAD 83 NME)				PPP #2 (NAD 83 NME)			
Y =	474,191.5	N		Y =	473,969.5	N		Y =	473,936.1	N		Y =	473,933.6	N		Y =	473,929.3	N	
X =	664,988.4	E		X =	666,428.1	E		X =	665,731.3	E		X =	663,409.2	E		X =	659,426.8	E	
LAT. =	32.302991	°N		LAT. =	32.302366	°N		LAT. =	32.302282	°N		LAT. =	32.302299	°N		LAT. =	32.302326	°N	
LONG. =	103.933124	°W		LONG. =	103.928467	°W		LONG. =	103.930723	°W		LONG. =	103.938238	°W		LONG. =	103.951127	°W	

PPP #3 (NAD 83 NME)				LTP (NAD 83 NME)				BHL (NAD 83 NME)			
Y =	473,927.9	N		Y =	473,925.4	N		Y =	473,925.2	N	
X =	658,096.0	E		X =	655,763.8	E		X =	655,713.8	E	
LAT. =	32.302335	°N		LAT. =	32.302351	°N		LAT. =	32.302351	°N	
LONG. =	103.955434	°W		LONG. =	103.962983	°W		LONG. =	103.963145	°W	

SHL (NAD 27 NME)				KOP (NAD 27 NME)				FTP (NAD 27 NME)				PPP #1 (NAD 27 NME)				PPP #2 (NAD 27 NME)			
Y =	474,131.3	N		Y =	473,909.3	N		Y =	473,876.0	N		Y =	473,873.5	N		Y =	473,869.2	N	
X =	623,805.9	E		X =	625,245.6	E		X =	624,548.8	E		X =	622,226.7	E		X =	618,244.4	E	
LAT. =	32.302868	°N		LAT. =	32.302242	°N		LAT. =	32.302158	°N		LAT. =	32.302175	°N		LAT. =	32.302203	°N	
LONG. =	103.932631	°W		LONG. =	103.927975	°W		LONG. =	103.930230	°W		LONG. =	103.937745	°W		LONG. =	103.950634	°W	

PPP #3 (NAD 27 NME)				LTP (NAD 27 NME)				BHL (NAD 27 NME)			
Y =	473,867.8	N		Y =	473,865.3	N		Y =	473,865.1	N	
X =	616,913.5	E		X =	614,581.3	E		X =	614,531.3	E	
LAT. =	32.302212	°N		LAT. =	32.302227	°N		LAT. =	32.302227	°N	
LONG. =	103.954941	°W		LONG. =	103.962489	°W		LONG. =	103.962651	°W	

CORNER COORDINATES (NAD 83 NME)

A - Y =	474,939.3	N		A - X =	666,057.2	E	
B - Y =	474,945.1	N		B - X =	663,405.1	E	
C - Y =	474,950.9	N		C - X =	660,754.2	E	
D - Y =	474,947.2	N		D - X =	658,090.8	E	
E - Y =	474,943.5	N		E - X =	655,428.1	E	
F - Y =	474,939.3	N		F - X =	653,062.6	E	
G - Y =	473,617.1	N		G - X =	663,410.5	F	

CORNER COORDINATES (NAD 27 NME)

A - Y =	474,879.1	N		A - X =	624,874.7	E	
B - Y =	474,885.0	N		B - X =	622,222.7	E	
C - Y =	474,890.8	N		C - X =	619,571.7	E	
D - Y =	474,887.1	N		D - X =	616,908.3	E	
E - Y =	474,883.4	N		E - X =	614,245.7	E	
F - Y =	473,552.4	N		F - X =	624,880.1	E	
G - Y =	473,557.0	N		G - X =	622,228.0	F	

WELL LOCATION INFORMATION

API Number 30-015-	Pool Code 98220	Pool Name PURPLE SAGE; WOLFCAMP (GAS)
Property Code	Property Name NASH UNIT	Well Number 118H
OGRID No. 005380	Operator Name XTO ENERGY, INC.	Ground Level Elevation 3,000'
Surface Owner: <input type="checkbox"/> State <input type="checkbox"/> Fee <input type="checkbox"/> Tribal <input checked="" type="checkbox"/> Federal		Mineral Owner: <input checked="" type="checkbox"/> State <input type="checkbox"/> Fee <input type="checkbox"/> Tribal <input checked="" type="checkbox"/> Federal

Surface Hole Location

UL	Section	Township	Range	Lot	Ft. from N/S	Ft. from E/W	Latitude	Longitude	County
I	13	23S	29E		1,780 FSL	1,061 FEL	32.302649	-103.933090	EDDY

Bottom Hole Location

UL	Section	Township	Range	Lot	Ft. from N/S	Ft. from E/W	Latitude	Longitude	County
M	14	23S	29E		345 FSL	280 FWL	32.298764	-103.963135	EDDY

Dedicated Acres 640.00	Infill or Defining Well INFILL	Defining Well API	Overlapping Spacing Unit (Y/N) Y	Consolidation Code U
Order Numbers.			Well Setbacks are under Common Ownership: <input checked="" type="checkbox"/> Yes <input type="checkbox"/> No	

Kick Off Point (KOP)

UL	Section	Township	Range	Lot	Ft. from N/S	Ft. from E/W	Latitude	Longitude	County
	18	23S	30E	4	527 FSL	368 FWL	32.299187	-103.928464	EDDY

First Take Point (FTP)

UL	Section	Township	Range	Lot	Ft. from N/S	Ft. from E/W	Latitude	Longitude	County
P	13	23S	29E		345 FSL	330 FEL	32.298694	-103.930721	EDDY

Last Take Point (LTP)

UL	Section	Township	Range	Lot	Ft. from N/S	Ft. from E/W	Latitude	Longitude	County
M	14	23S	29E		345 FSL	330 FWL	32.298764	-103.962973	EDDY

Unitized Area of Area of Interest NMNM-070992X	Spacing Unit Type : <input checked="" type="checkbox"/> Horizontal <input type="checkbox"/> Vertical	Ground Elevation 3,000'
--	--	-----------------------------------

OPERATOR CERTIFICATIONS

I hereby certify that the information contained herein is true and complete to the best of my knowledge and belief, and, if the well is vertical or directional well, that this organization either owns a working interest or unleased mineral interest in the land including the proposed bottom hole location or has a right to drill this at this location pursuant to a contract with an owner of a working interest or unleased mineral interest, or a voluntary pooling agreement or a compulsory pooling order of heretofore entered by the division.

If this well is a horizontal well, I further certify that this organization has received the consent of at least one lessee or owner of a working interest or unleased mineral interest in each tract (in the target pool or information) in which any part of the well's completed interval will be located or obtained a compulsory pooling order from the division.

Jena Austin
Signature

11/19/2024
Date

Jena Austin

Printed Name

SURVEYOR CERTIFICATIONS

I hereby certify that the well location shown on this plat was plotted from field notes of actual surveys made by me or under my supervision, and that the same is true and correct to the best of my belief

[Signature]
Signature and Seal of Professional Surveyor

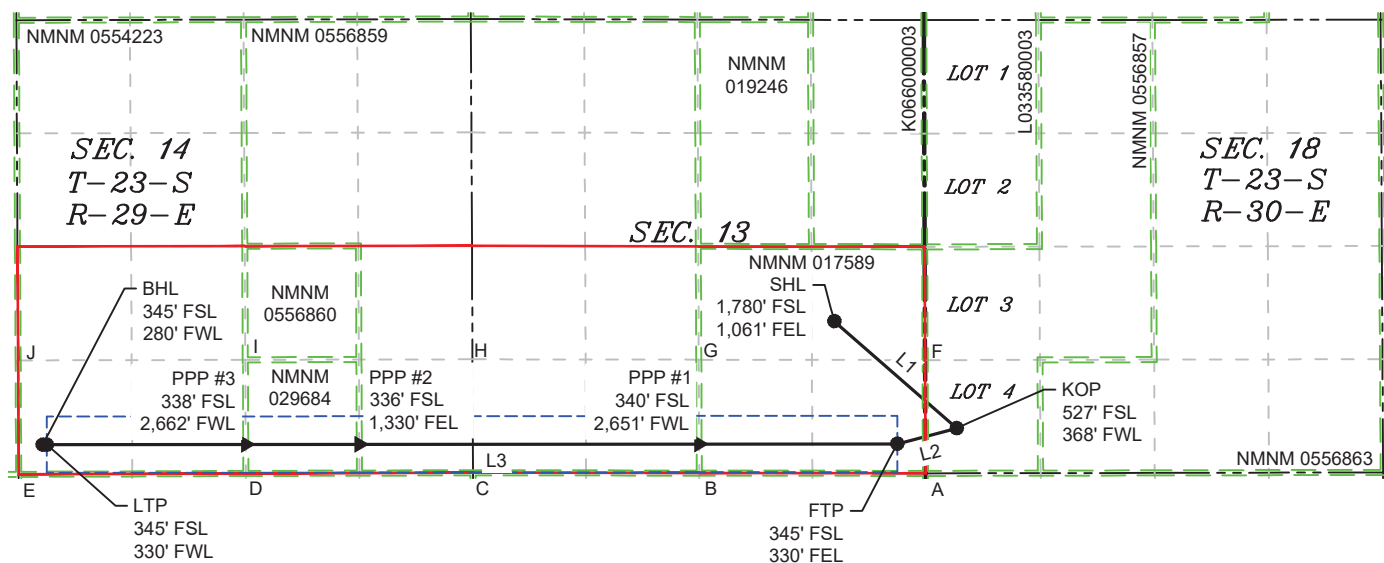


MARK DILLON HARP 23786

Certificate Number

Date of Survey

11/18/2024



LEGEND

LINE TABLE		
LINE	AZIMUTH	LENGTH
L1	131°09'44"	1,905.05'
L2	255°22'12"	720.32'
L3	269°56'15"	10,015.39'

LOT ACREAGE TABLE	
SECTION 18 T-23-S R-30-E	
LOT 1 = 40.17 ACRES	
LOT 2 = 40.20 ACRES	
LOT 3 = 40.22 ACRES	
LOT 4 = 40.25 ACRES	

---	SECTION LINE
---	PROPOSED WELL BORE
---	NEW MEXICO MINERAL LEASE
---	330' BUFFER
---	ALLOCATION AREA

COORDINATE TABLE

SHL (NAD 83 NME)			KOP (NAD 83 NME)			FTP (NAD 83 NME)			PPP #1 (NAD 83 NME)			PPP #2 (NAD 83 NME)		
Y =	474,066.9	N	Y =	472,813.0	N	Y =	472,631.1	N	Y =	472,628.6	N	Y =	472,624.3	N
X =	664,999.3	E	X =	666,433.5	E	X =	665,736.5	E	X =	663,414.6	E	X =	659,433.0	E
LAT. =	32.302649	°N	LAT. =	32.299187	°N	LAT. =	32.298694	°N	LAT. =	32.298711	°N	LAT. =	32.298739	°N
LONG. =	103.933090	°W	LONG. =	103.928464	°W	LONG. =	103.930721	°W	LONG. =	103.938236	°W	LONG. =	103.951122	°W

PPP #3 (NAD 83 NME)			LTP (NAD 83 NME)			BHL (NAD 83 NME)		
Y =	472,622.9	N	Y =	472,620.4	N	Y =	472,620.2	N
X =	658,102.8	E	X =	655,771.2	E	X =	655,721.2	E
LAT. =	32.298748	°N	LAT. =	32.298764	°N	LAT. =	32.298764	°N
LONG. =	103.955427	°W	LONG. =	103.962973	°W	LONG. =	103.963135	°W

SHL (NAD 27 NME)			KOP (NAD 27 NME)			FTP (NAD 27 NME)			PPP #1 (NAD 27 NME)			PPP #2 (NAD 27 NME)		
Y =	474,006.8	N	Y =	472,752.9	N	Y =	472,571.0	N	Y =	472,568.5	N	Y =	472,564.3	N
X =	623,816.8	E	X =	625,251.0	E	X =	624,554.0	E	X =	622,232.0	E	X =	618,250.4	E
LAT. =	32.302525	°N	LAT. =	32.299063	°N	LAT. =	32.298571	°N	LAT. =	32.298588	°N	LAT. =	32.298616	°N
LONG. =	103.932598	°W	LONG. =	103.927971	°W	LONG. =	103.930229	°W	LONG. =	103.937744	°W	LONG. =	103.950629	°W

PPP #3 (NAD 27 NME)			LTP (NAD 27 NME)			BHL (NAD 27 NME)		
Y =	472,562.8	N	Y =	472,560.4	N	Y =	472,560.2	N
X =	616,920.3	E	X =	614,588.7	E	X =	614,538.7	E
LAT. =	32.298625	°N	LAT. =	32.298640	°N	LAT. =	32.298640	°N
LONG. =	103.954934	°W	LONG. =	103.962480	°W	LONG. =	103.962642	°W

CORNER COORDINATES (NAD 83 NME)

A - Y =	472,285.7	N	A - X =	666,068.1	E
B - Y =	472,289.1	N	B - X =	663,415.9	E
C - Y =	472,292.9	N	C - X =	660,764.6	E
D - Y =	472,284.6	N	D - X =	658,104.7	E
E - Y =	472,285.7	N	E - X =	665,443.1	E
F - Y =	473,612.5	N	F - X =	666,062.6	F

CORNER COORDINATES (NAD 27 NME)

A - Y =	472,225.6	N	A - X =	624,885.5	E
B - Y =	472,229.0	N	B - X =	622,233.4	E
C - Y =	472,232.8	N	C - X =	619,582.1	E
D - Y =	472,224.5	N	D - X =	616,922.2	E
E - Y =	472,214.2	N	E - X =	614,260.6	E
F - Y =	473,552.4	N	F - X =	624,880.1	F

WELL LOCATION INFORMATION

API Number 30-015-	Pool Code 98220	Pool Name PURPLE SAGE; WOLFCAMP (GAS)
Property Code	Property Name NASH UNIT	Well Number 177H
OGRID No. 005380	Operator Name XTO ENERGY, INC.	Ground Level Elevation 3,001'
Surface Owner: <input type="checkbox"/> State <input type="checkbox"/> Fee <input type="checkbox"/> Tribal <input checked="" type="checkbox"/> Federal		Mineral Owner: <input checked="" type="checkbox"/> State <input type="checkbox"/> Fee <input type="checkbox"/> Tribal <input checked="" type="checkbox"/> Federal

Surface Hole Location

UL	Section	Township	Range	Lot	Ft. from N/S	Ft. from E/W	Latitude	Longitude	County
I	13	23S	29E		1,907 FSL	1,042 FEL	32.302998	-103.933027	EDDY

Bottom Hole Location

UL	Section	Township	Range	Lot	Ft. from N/S	Ft. from E/W	Latitude	Longitude	County
L	14	23S	29E		1,650 FSL	280 FWL	32.302351	-103.963145	EDDY

Dedicated Acres 640.00	Infill or Defining Well INFILL	Defining Well API	Overlapping Spacing Unit (Y/N) N	Consolidation Code U
Order Numbers.			Well Setbacks are under Common Ownership: <input checked="" type="checkbox"/> Yes <input type="checkbox"/> No	

Kick Off Point (KOP)

UL	Section	Township	Range	Lot	Ft. from N/S	Ft. from E/W	Latitude	Longitude	County
	18	23S	30E	3	1,676 FSL	374 FWL	32.302347	-103.928443	EDDY

First Take Point (FTP)

UL	Section	Township	Range	Lot	Ft. from N/S	Ft. from E/W	Latitude	Longitude	County
I	13	23S	29E		1,650 FSL	330 FEL	32.302282	-103.930723	EDDY

Last Take Point (LTP)

UL	Section	Township	Range	Lot	Ft. from N/S	Ft. from E/W	Latitude	Longitude	County
L	14	23S	29E		1,650 FSL	330 FWL	32.302351	-103.962983	EDDY

Unitized Area of Area of Interest NMNM-070992X	Spacing Unit Type : <input checked="" type="checkbox"/> Horizontal <input type="checkbox"/> Vertical	Ground Elevation 3,001'
--	--	-----------------------------------

OPERATOR CERTIFICATIONS

I hereby certify that the information contained herein is true and complete to the best of my knowledge and belief, and, if the well is vertical or directional well, that this organization either owns a working interest or unleased mineral interest in the land including the proposed bottom hole location or has a right to drill this at this location pursuant to a contract with an owner of a working interest or unleased mineral interest, or a voluntary pooling agreement or a compulsory pooling order of heretofore entered by the division.

If this well is a horizontal well, I further certify that this organization has received the consent of at least one lessee or owner of a working interest or unleased mineral interest in each tract (in the target pool or information) in which any part of the well's completed interval will be located or obtained a compulsory pooling order from the division.

Jena Austin
Signature

11/19/2024

Date

Jena Austin

Printed Name

SURVEYOR CERTIFICATIONS

I hereby certify that the well location shown on this plat was plotted from field notes of actual surveys made by me or under my supervision, and that the same is true and correct to the best of my belief

[Signature]
Signature and Seal of Professional Surveyor

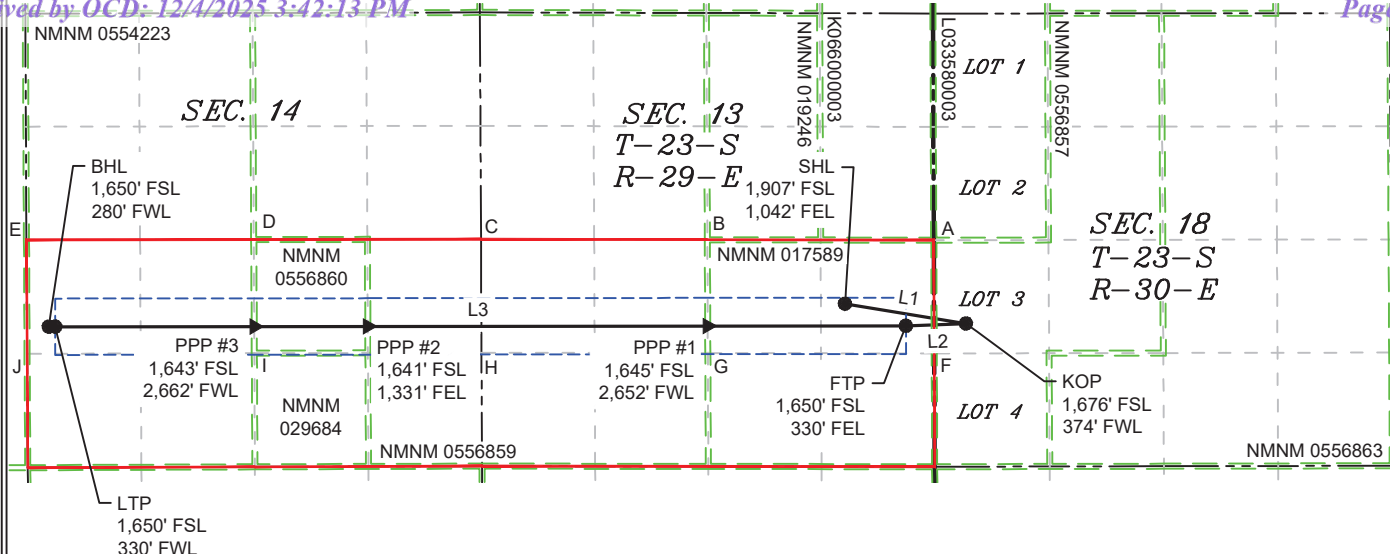


MARK DILLON HARP 23786

Certificate Number

Date of Survey

11/18/2024



COORDINATE TABLE

SHL (NAD 83 NME)			SHL (NAD 27 NME)		
Y =	474,194.2	N	Y =	474,134.0	N
X =	665,018.3	E	X =	623,835.9	E
LAT. =	32.302998	°N	LAT. =	32.302875	°N
LONG. =	103.933027	°W	LONG. =	103.932534	°W
KOP (NAD 83 NME)			KOP (NAD 27 NME)		
Y =	473,962.6	N	Y =	473,902.4	N
X =	666,435.5	E	X =	625,253.0	E
LAT. =	32.302347	°N	LAT. =	32.302223	°N
LONG. =	103.928443	°W	LONG. =	103.927951	°W
FTP (NAD 83 NME)			FTP (NAD 27 NME)		
Y =	473,936.1	N	Y =	473,876.0	N
X =	665,731.3	E	X =	624,548.8	E
LAT. =	32.302282	°N	LAT. =	32.302158	°N
LONG. =	103.930723	°W	LONG. =	103.930230	°W
PPP #1 (NAD 83 NME)			PPP #1 (NAD 27 NME)		
Y =	473,933.6	N	Y =	473,873.5	N
X =	663,409.2	E	X =	622,226.7	E
LAT. =	32.302299	°N	LAT. =	32.302175	°N
LONG. =	103.938238	°W	LONG. =	103.937745	°W
PPP #2 (NAD 83 NME)			PPP #2 (NAD 27 NME)		
Y =	473,929.3	N	Y =	473,869.2	N
X =	659,426.8	E	X =	618,244.4	E
LAT. =	32.302326	°N	LAT. =	32.302203	°N
LONG. =	103.951127	°W	LONG. =	103.950634	°W
PPP #3 (NAD 83 NME)			PPP #3 (NAD 27 NME)		
Y =	473,927.9	N	Y =	473,867.8	N
X =	658,096.0	E	X =	616,913.5	E
LAT. =	32.302335	°N	LAT. =	32.302212	°N
LONG. =	103.955434	°W	LONG. =	103.954941	°W
LTP (NAD 83 NME)			LTP (NAD 27 NME)		
Y =	473,925.4	N	Y =	473,865.3	N
X =	655,763.8	E	X =	614,581.3	E
LAT. =	32.302351	°N	LAT. =	32.302227	°N
LONG. =	103.962983	°W	LONG. =	103.962489	°W
BHL (NAD 83 NME)			BHL (NAD 27 NME)		
Y =	473,925.2	N	Y =	473,865.1	N

LEGEND

---	SECTION LINE
---	PROPOSED WELL BORE
---	NEW MEXICO MINERAL LEASE
---	330' BUFFER
---	ALLOCATION AREA

LINE TABLE		
LINE	AZIMUTH	LENGTH
L1	099°16'50"	1,436.00'
L2	267°50'53"	704.74'
L3	269°56'15"	10,017.51'

LOT ACREAGE TABLE	
SECTION 18 T-23-S R-30-E	
LOT 1 =	40.17 ACRES
LOT 2 =	40.20 ACRES
LOT 3 =	40.22 ACRES
LOT 4 =	40.25 ACRES

CORNER COORDINATES (NAD 83 NME)

A - Y =	474,939.3	N	A - X =	666,057.2	E
B - Y =	474,945.1	N	B - X =	663,405.1	E
C - Y =	474,950.9	N	C - X =	660,754.2	E
D - Y =	474,947.2	N	D - X =	658,090.8	E
E - Y =	474,943.5	N	E - X =	655,428.1	E
F - Y =	473,612.5	N	F - X =	666,062.6	E
G - Y =	473,617.1	N	G - X =	663,410.5	E
H - Y =	473,621.9	N	H - X =	660,759.4	E
I - Y =	473,615.9	N	I - X =	658,097.7	E
J - Y =	473,608.8	N	J - X =	655,435.6	E

CORNER COORDINATES (NAD 27 NME)

A - Y =	474,879.1	N	A - X =	624,874.7	E
B - Y =	474,885.0	N	B - X =	622,222.7	E
C - Y =	474,890.8	N	C - X =	619,571.7	E
D - Y =	474,887.1	N	D - X =	616,908.3	E
E - Y =	474,883.4	N	E - X =	614,245.7	E
F - Y =	473,552.4	N	F - X =	624,880.1	E
G - Y =	473,557.0	N	G - X =	622,228.0	E
H - Y =	473,561.8	N	H - X =	619,576.9	E
I - Y =	473,555.8	N	I - X =	616,915.3	E
J - Y =	473,548.8	N	J - X =	614,253.2	E

Exhibit 2

Nash Pad D S/2 S/2 Unit

WELL LOCATION INFORMATION			
API Number 30-015-	Pool Code 98220	Pool Name PURPLE SAGE; WOLFCAMP (GAS)	
Property Code	Property Name NASH UNIT	Well Number 168H	
OGRID No. 005380	Operator Name XTO ENERGY, INC.	Ground Level Elevation 3,001'	
Surface Owner: <input type="checkbox"/> State <input type="checkbox"/> Fee <input type="checkbox"/> Tribal <input checked="" type="checkbox"/> Federal		Mineral Owner: <input checked="" type="checkbox"/> State <input type="checkbox"/> Fee <input type="checkbox"/> Tribal <input checked="" type="checkbox"/> Federal	

Surface Hole Location									
UL	Section	Township	Range	Lot	Ft. from N/S	Ft. from E/W	Latitude	Longitude	County
I	13	23S	29E		1,783 FSL	1,032 FEL	32.302656	-103.932993	EDDY

Bottom Hole Location									
UL	Section	Township	Range	Lot	Ft. from N/S	Ft. from E/W	Latitude	Longitude	County
M	14	23S	29E		990 FSL	280 FWL	32.300537	-103.963140	EDDY

Dedicated Acres 320.00	Infill or Defining Well INFILL	Defining Well API	Overlapping Spacing Unit (Y/N) Y	Consolidation Code U
Order Numbers.			Well Setbacks are under Common Ownership: <input checked="" type="checkbox"/> Yes <input type="checkbox"/> No	

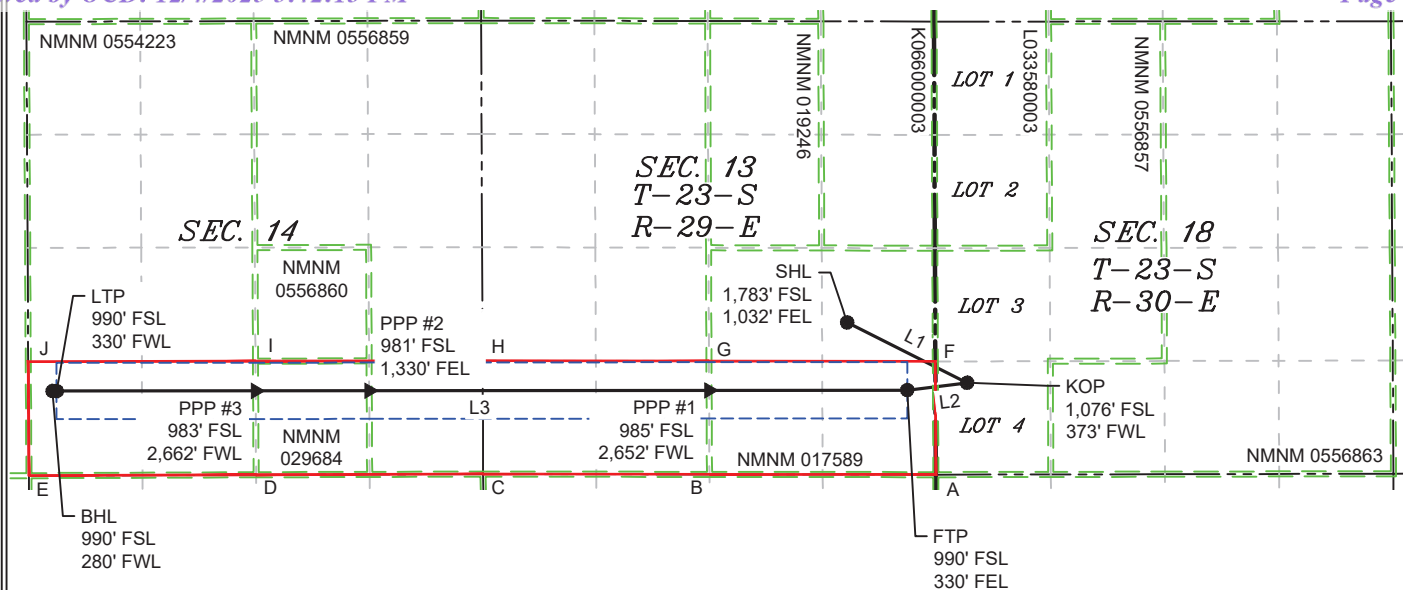
Kick Off Point (KOP)									
UL	Section	Township	Range	Lot	Ft. from N/S	Ft. from E/W	Latitude	Longitude	County
	18	23S	30E	4	1,076 FSL	373 FWL	32.300697	-103.928448	EDDY

First Take Point (FTP)									
UL	Section	Township	Range	Lot	Ft. from N/S	Ft. from E/W	Latitude	Longitude	County
P	13	23S	29E		990 FSL	330 FEL	32.300467	-103.930722	EDDY

Last Take Point (LTP)									
UL	Section	Township	Range	Lot	Ft. from N/S	Ft. from E/W	Latitude	Longitude	County
M	14	23S	29E		990 FSL	330 FWL	32.300537	-103.962978	EDDY

Unitized Area of Area of Interest NMNM-070992X	Spacing Unit Type : <input checked="" type="checkbox"/> Horizontal <input type="checkbox"/> Vertical	Ground Elevation 3,001'
--	--	-----------------------------------

<div>OPERATOR CERTIFICATIONS</div> <div><p><i>I hereby certify that the information contained herein is true and complete to the best of my knowledge and belief, and, if the well is vertical or directional well, that this organization either owns a working interest or unleased mineral interest in the land including the proposed bottom hole location or has a right to drill this at this location pursuant to a contract with an owner of a working interest or unleased mineral interest, or a voluntary pooling agreement or a compulsory pooling order of heretofore entered by the division.</i></p><p><i>If this well is a horizontal well, I further certify that this organization has received the consent of at least one lessee or owner of a working interest or unleased mineral interest in each tract (in the target pool or information) in which any part of the well's completed interval will be located or obtained a compulsory pooling order from the division.</i></p></div> <div><div><div><div>Jena Austin</div><div>Signature</div></div><div><div>11/19/2024</div><div>Date</div></div></div><div><div>Jena Austin</div><div>Printed Name</div></div></div>	<div><div>SURVEYOR CERTIFICATIONS</div><div><p><i>I hereby certify that the well location shown on this plat was plotted from field notes of actual surveys made by me or under my supervision, and that the same is true and correct to the best of my belief</i></p></div><div><div><div><div><div>MARK DILLON HARP</div><div>NEW MEXICO</div><div>23786</div><div>PROFESSIONAL SURVEYOR</div></div></div><div><div><div></div><div>Signature and Seal of Professional Surveyor</div></div></div></div><div><div>MARK DILLON HARP 23786</div><div>Certificate Number</div></div><div><div>11/18/2024</div><div>Date of Survey</div></div></div></div>
--	---



COORDINATE TABLE

SHL (NAD 83 NME)			SHL (NAD 27 NME)		
Y =	474,069.6	N	Y =	474,009.5	N
X =	665,029.2	E	X =	623,846.7	E
LAT. =	32.302656	°N	LAT. =	32.302532	°N
LONG. =	103.932993	°W	LONG. =	103.932501	°W
KOP (NAD 83 NME)			KOP (NAD 27 NME)		
Y =	473,362.2	N	Y =	473,302.1	N
X =	666,436.3	E	X =	625,253.8	E
LAT. =	32.300697	°N	LAT. =	32.300573	°N
LONG. =	103.928448	°W	LONG. =	103.927955	°W
FTP (NAD 83 NME)			FTP (NAD 27 NME)		
Y =	473,276.1	N	Y =	473,216.0	N
X =	665,734.0	E	X =	624,551.4	E
LAT. =	32.300467	°N	LAT. =	32.300344	°N
LONG. =	103.930722	°W	LONG. =	103.930230	°W
PPP #1 (NAD 83 NME)			PPP #1 (NAD 27 NME)		
Y =	473,273.6	N	Y =	473,213.5	N
X =	663,411.9	E	X =	622,229.4	E
LAT. =	32.300484	°N	LAT. =	32.300361	°N
LONG. =	103.938237	°W	LONG. =	103.937744	°W
PPP #2 (NAD 83 NME)			PPP #2 (NAD 27 NME)		
Y =	473,269.3	N	Y =	473,209.2	N
X =	659,429.9	E	X =	618,247.4	E
LAT. =	32.300512	°N	LAT. =	32.300389	°N
LONG. =	103.951125	°W	LONG. =	103.950632	°W
PPP #3 (NAD 83 NME)			PPP #3 (NAD 27 NME)		
Y =	473,267.9	N	Y =	473,207.8	N
X =	658,099.4	E	X =	616,917.0	E
LAT. =	32.300521	°N	LAT. =	32.300398	°N
LONG. =	103.955431	°W	LONG. =	103.954938	°W
LTP (NAD 83 NME)			LTP (NAD 27 NME)		
Y =	473,265.4	N	Y =	473,205.3	N
X =	655,767.5	E	X =	614,585.1	E
LAT. =	32.300537	°N	LAT. =	32.300413	°N
LONG. =	103.962978	°W	LONG. =	103.962485	°W
BHL (NAD 83 NME)			BHL (NAD 27 NME)		

LEGEND

-----	SECTION LINE
-----	PROPOSED WELL BORE
-----	NEW MEXICO MINERAL LEASE
-----	330' BUFFER
-----	ALLOCATION AREA

LINE TABLE

LINE	AZIMUTH	LENGTH
L1	116°41'23"	1,574.99'
L2	263°00'43"	707.65'
L3	269°56'15"	10,016.44'

LOT ACREAGE TABLE

SECTION 18 T-23-S R-30-E LOT 1 = 40.17 ACRES LOT 2 = 40.20 ACRES LOT 3 = 40.22 ACRES LOT 4 = 40.25 ACRES

CORNER COORDINATES (NAD 83 NME)

A - Y =	472,285.7	N	A - X =	666,068.1	E
B - Y =	472,289.1	N	B - X =	663,415.9	E
C - Y =	472,292.9	N	C - X =	660,764.6	E
D - Y =	472,284.6	N	D - X =	658,104.7	E
E - Y =	472,274.2	N	E - X =	655,443.1	E
F - Y =	473,612.5	N	F - X =	666,062.6	E
G - Y =	473,617.1	N	G - X =	663,410.5	E
H - Y =	473,621.9	N	H - X =	660,759.4	E
I - Y =	473,615.9	N	I - X =	658,097.7	E
J - Y =	473,608.8	N	J - X =	655,435.6	E

CORNER COORDINATES (NAD 27 NME)

A - Y =	472,225.6	N	A - X =	624,885.5	E
B - Y =	472,229.0	N	B - X =	622,233.4	E
C - Y =	472,232.8	N	C - X =	619,582.1	E
D - Y =	472,224.5	N	D - X =	616,922.2	E
E - Y =	472,214.2	N	E - X =	614,260.6	E
F - Y =	473,552.4	N	F - X =	624,880.1	E
G - Y =	473,557.0	N	G - X =	622,228.0	E
H - Y =	473,561.8	N	H - X =	619,576.9	E
I - Y =	473,555.8	N	I - X =	616,915.3	E
J - Y =	473,548.8	N	J - X =	614,253.2	E

WELL LOCATION INFORMATION

API Number 30-015-	Pool Code 98220	Pool Name PURPLE SAGE; WOLFCAMP (GAS)
Property Code	Property Name NASH UNIT	Well Number 178H
OGRID No. 005380	Operator Name XTO ENERGY, INC.	Ground Level Elevation 2,998'
Surface Owner: <input type="checkbox"/> State <input type="checkbox"/> Fee <input type="checkbox"/> Tribal <input checked="" type="checkbox"/> Federal		Mineral Owner: <input checked="" type="checkbox"/> State <input type="checkbox"/> Fee <input type="checkbox"/> Tribal <input checked="" type="checkbox"/> Federal

Surface Hole Location

UL	Section	Township	Range	Lot	Ft. from N/S	Ft. from E/W	Latitude	Longitude	County
I	13	23S	29E		1,645 FSL	1,171 FEL	32.302278	-103.933443	EDDY

Bottom Hole Location

UL	Section	Township	Range	Lot	Ft. from N/S	Ft. from E/W	Latitude	Longitude	County
M	14	23S	29E		345 FSL	280 FWL	32.298764	-103.963135	EDDY

Dedicated Acres 320.00	Infill or Defining Well INFILL	Defining Well API	Overlapping Spacing Unit (Y/N) Y	Consolidation Code U
Order Numbers.			Well Setbacks are under Common Ownership: <input checked="" type="checkbox"/> Yes <input type="checkbox"/> No	

Kick Off Point (KOP)

UL	Section	Township	Range	Lot	Ft. from N/S	Ft. from E/W	Latitude	Longitude	County
	18	23S	30E	4	476 FSL	372 FWL	32.299049	-103.928448	EDDY

First Take Point (FTP)

UL	Section	Township	Range	Lot	Ft. from N/S	Ft. from E/W	Latitude	Longitude	County
P	13	23S	29E		345 FSL	330 FEL	32.298694	-103.930721	EDDY

Last Take Point (LTP)

UL	Section	Township	Range	Lot	Ft. from N/S	Ft. from E/W	Latitude	Longitude	County
M	14	23S	29E		345 FSL	330 FWL	32.298764	-103.962973	EDDY

Unitized Area of Area of Interest NMNM-070992X	Spacing Unit Type : <input checked="" type="checkbox"/> Horizontal <input type="checkbox"/> Vertical	Ground Elevation 2,998'
--	--	-----------------------------------

OPERATOR CERTIFICATIONS

I hereby certify that the information contained herein is true and complete to the best of my knowledge and belief, and, if the well is vertical or directional well, that this organization either owns a working interest or unleased mineral interest in the land including the proposed bottom hole location or has a right to drill this at this location pursuant to a contract with an owner of a working interest or unleased mineral interest, or a voluntary pooling agreement or a compulsory pooling order of heretofore entered by the division.

If this well is a horizontal well, I further certify that this organization has received the consent of at least one lessee or owner of a working interest or unleased mineral interest in each tract (in the target pool or information) in which any part of the well's completed interval will be located or obtained a compulsory pooling order from the division.

Jena Austin
Signature

11/19/2024
Date

Jena Austin
Printed Name

SURVEYOR CERTIFICATIONS

I hereby certify that the well location shown on this plat was plotted from field notes of actual surveys made by me or under my supervision, and that the same is true and correct to the best of my belief

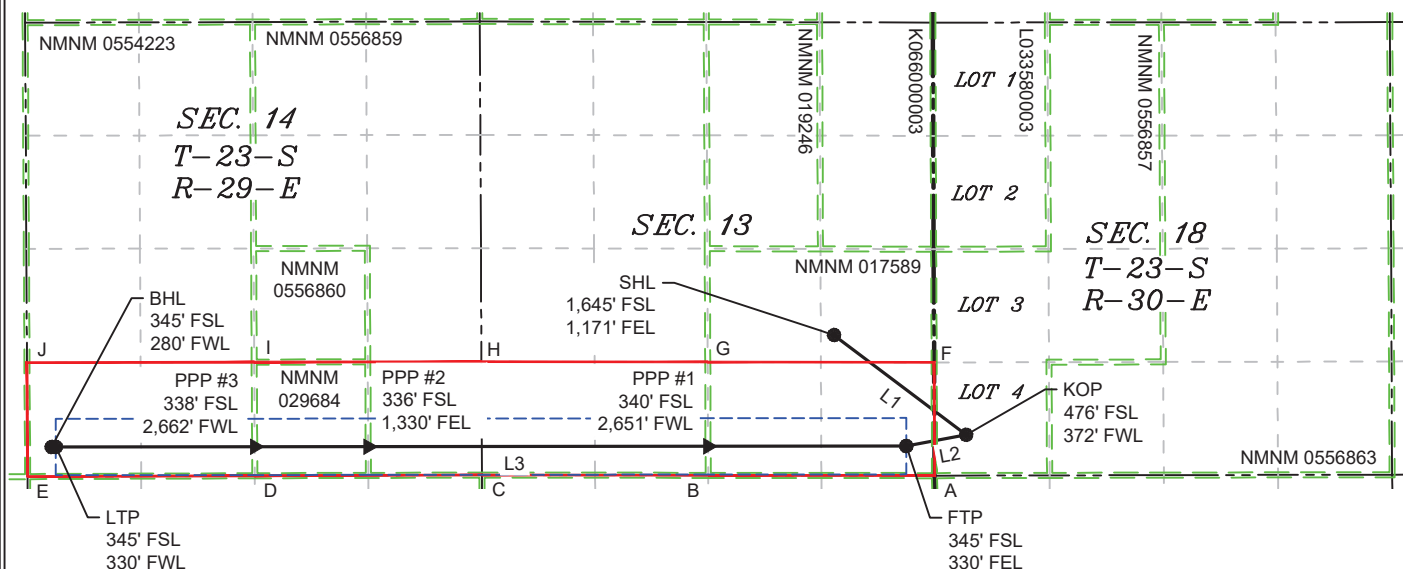
[Signature]
Signature and Seal of Professional Surveyor



MARK DILLON HARP 23786
Certificate Number

Date of Survey

11/18/2024



COORDINATE TABLE

SHL (NAD 83 NME)			SHL (NAD 27 NME)		
Y =	473,931.8	N	Y =	473,871.7	N
X =	664,890.7	E	X =	623,708.2	E
LAT. =	32.302278	°N	LAT. =	32.302155	°N
LONG. =	103.933443	°W	LONG. =	103.932951	°W
KOP (NAD 83 NME)			KOP (NAD 27 NME)		
Y =	472,762.8	N	Y =	472,702.7	N
X =	666,438.4	E	X =	625,255.9	E
LAT. =	32.299049	°N	LAT. =	32.298925	°N
LONG. =	103.928448	°W	LONG. =	103.927956	°W
FTP (NAD 83 NME)			FTP (NAD 27 NME)		
Y =	472,631.1	N	Y =	472,571.0	N
X =	665,736.5	E	X =	624,554.0	E
LAT. =	32.298694	°N	LAT. =	32.298571	°N
LONG. =	103.930721	°W	LONG. =	103.930229	°W
PPP #1 (NAD 83 NME)			PPP #1 (NAD 27 NME)		
Y =	472,628.6	N	Y =	472,568.5	N
X =	663,414.6	E	X =	622,232.0	E
LAT. =	32.298711	°N	LAT. =	32.298588	°N
LONG. =	103.938236	°W	LONG. =	103.937744	°W
PPP #2 (NAD 83 NME)			PPP #2 (NAD 27 NME)		
Y =	472,624.3	N	Y =	472,564.3	N
X =	659,433.0	E	X =	618,250.4	E
LAT. =	32.298739	°N	LAT. =	32.298616	°N
LONG. =	103.951122	°W	LONG. =	103.950629	°W
PPP #3 (NAD 83 NME)			PPP #3 (NAD 27 NME)		
Y =	472,622.9	N	Y =	472,562.8	N
X =	658,102.8	E	X =	616,920.3	E
LAT. =	32.298748	°N	LAT. =	32.298625	°N
LONG. =	103.955427	°W	LONG. =	103.954934	°W
LTP (NAD 83 NME)			LTP (NAD 27 NME)		
Y =	472,620.4	N	Y =	472,560.4	N
X =	655,771.2	E	X =	614,588.7	E
LAT. =	32.298764	°N	LAT. =	32.298640	°N
LONG. =	103.962480	°W	LONG. =	103.962480	°W
BHL (NAD 83 NME)			BHL (NAD 27 NME)		
Y =	473,931.8	N	Y =	473,871.7	N
X =	664,890.7	E	X =	623,708.2	E
LAT. =	32.302278	°N	LAT. =	32.302155	°N
LONG. =	103.933443	°W	LONG. =	103.932951	°W

LEGEND

-----	SECTION LINE
-----	PROPOSED WELL BORE
-----	NEW MEXICO MINERAL LEASE
-----	330' BUFFER
-----	ALLOCATION AREA

LINE TABLE

LINE	AZIMUTH	LENGTH
L1	127°03'53"	1,939.62'
L2	259°22'29"	714.10'
L3	269°56'15"	10,015.39'

LOT ACREAGE TABLE

SECTION 18
T-23-S R-30-E
LOT 1 = 40.17 ACRES
LOT 2 = 40.20 ACRES
LOT 3 = 40.22 ACRES
LOT 4 = 40.25 ACRES

CORNER COORDINATES (NAD 83 NME)

A - Y =	472,285.7	N	A - X =	666,068.1	E
B - Y =	472,289.1	N	B - X =	663,415.9	E
C - Y =	472,292.9	N	C - X =	660,764.6	E
D - Y =	472,284.6	N	D - X =	658,104.7	E
E - Y =	472,274.2	N	E - X =	655,443.1	E
F - Y =	473,612.5	N	F - X =	666,062.6	E
G - Y =	473,617.1	N	G - X =	663,410.5	E
H - Y =	473,621.9	N	H - X =	660,759.4	E
I - Y =	473,615.9	N	I - X =	658,097.7	E
J - Y =	473,608.8	N	J - X =	655,435.6	E

CORNER COORDINATES (NAD 27 NME)

A - Y =	472,225.6	N	A - X =	624,885.5	E
B - Y =	472,229.0	N	B - X =	622,233.4	E
C - Y =	472,232.8	N	C - X =	619,582.1	E
D - Y =	472,224.5	N	D - X =	616,922.2	E
E - Y =	472,214.2	N	E - X =	614,260.6	E
F - Y =	473,552.4	N	F - X =	624,880.1	E
G - Y =	473,557.0	N	G - X =	622,228.0	E
H - Y =	473,561.8	N	H - X =	619,576.9	E
I - Y =	473,555.8	N	I - X =	616,915.3	E
J - Y =	473,548.8	N	J - X =	614,253.2	E

Exhibit 3

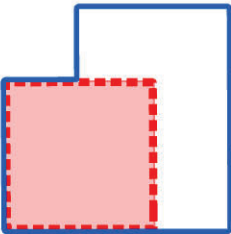
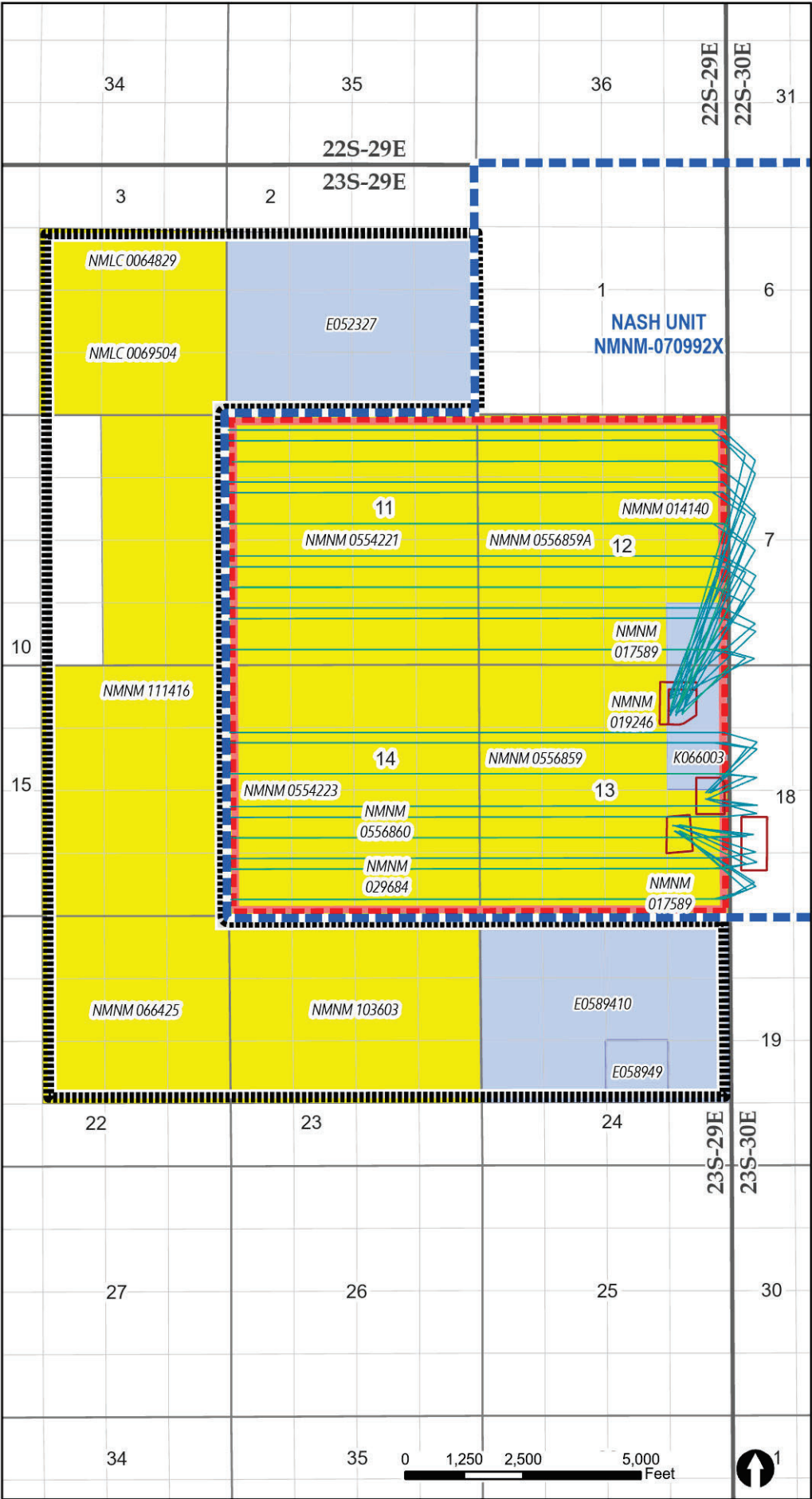


Date: 12/1/2025

Nash Unit
NSP Exhibit
Wolfcamp Purple Sage Pool

SEC 11: ALL, SEC 12: ALL, SEC 13: ALL
SEC 14: ALL IN 23S-29E
CONTAINING 2,560 ACRES, MORE OR LESS.

- SPACING UNIT
- NOTIFICATION AREA
- NASH UNIT
- FEDERAL LEASE
- STATE LEASE
- WELL PAD
- WELLBORE





NASH UNIT EDDY COUNTY, NEW MEXICO

Date: 9/3/2025

Land GIS Dept: O:\Arcview\Projects\Kelli\ Project APRXs\Delaware Federal Unit PODs\Delaware Federal Unit PODs.aprx Layout: NASH LEASES

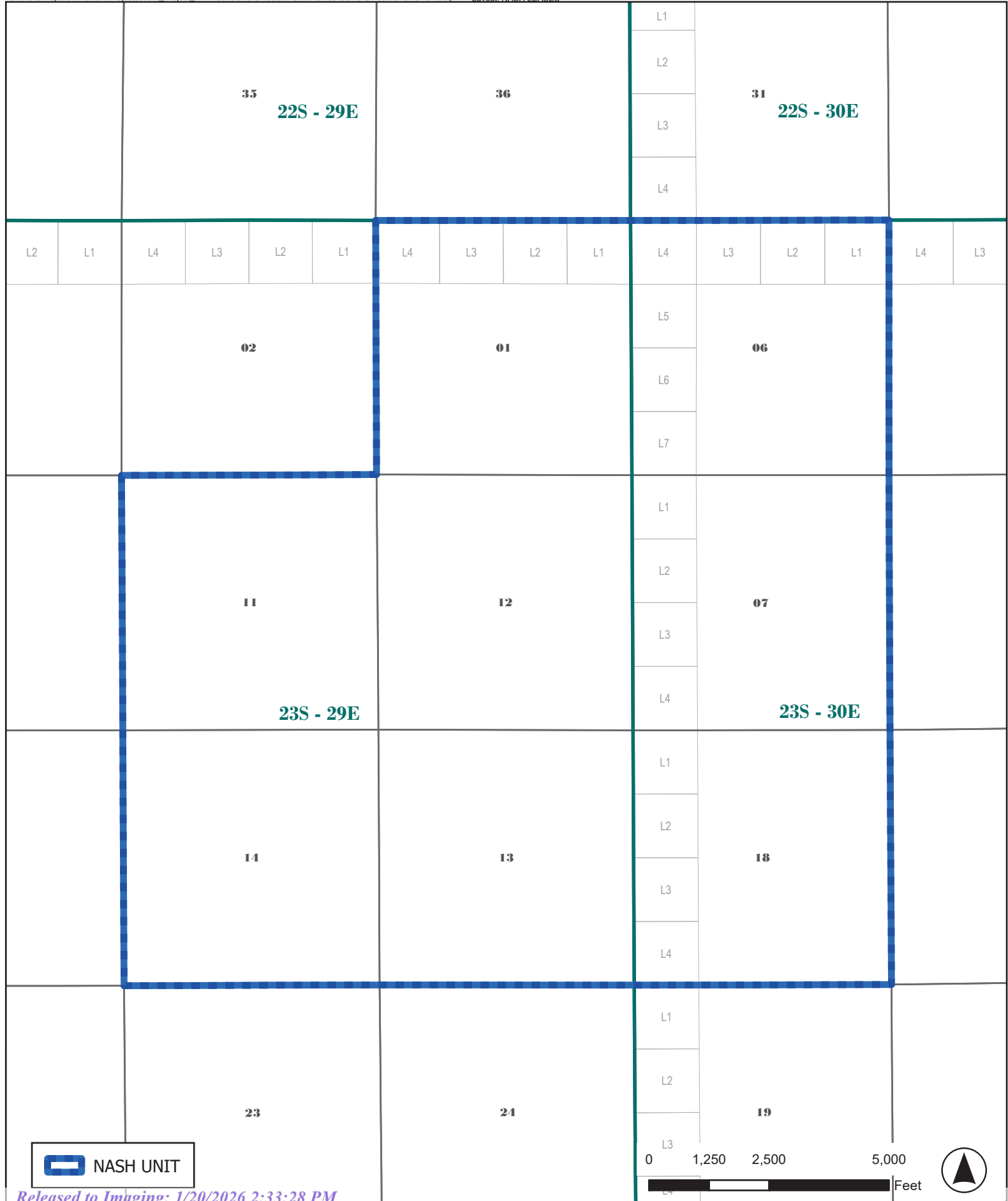


Exhibit 4

Affected Person(s)			
Acreage Description	Operator	WI Owners	Acreage Type
S/2 N/2 and S/2 Section 2 T23S R29E	XTO Permian Operating	XTO Delaware Basin, LLC 6401 Holiday Hill Rd Bldg 5 Midland, TX 79707	State E052327
Section 3 T23S R29E	XTO Permian Operating	XTO Delaware Basin, LLC 6401 Holiday Hill Rd Bldg 5 Midland, TX 79707	Federal NMNM111416 NMLC0064829
E/2 W/2 and E/2 Section 10 T23S R29E	Northern Oil and Gas	Novo Oil & Gas Northern Delaware LLC 1001 W Wilshire Blvd Ste 206 Oklahoma City, OK 73116 Titus Oil & Gas 420 Throckmorton St Ste 1150 Fort Worth, TX 76102	Federal NMNM111416
E/2 W/2 and E/2 Section 15 T23S R29E	Northern Oil and Gas	Novo Oil & Gas Northern Delaware LLC 1001 W Wilshire Blvd Ste 206 Oklahoma City, OK 73116 Titus Oil & Gas 420 Throckmorton St Ste 1150 Fort Worth, TX 76102	Federal NMNM111416
Section 22 T23S R29E	Westlawn Fortuna Inc.	Devon Energy Production Co LP 333 West Sheridan Avenue Oklahoma City, OK 73102	Federal NMNM066425
N/2 S/2 and N/2 Section 23 T23S R29E	Highland (Texas) Energy Co	Echo Production PO Box 1210 Graham, TX 76450	Federal NMNM103603
N/2 S/2 and N/2 Section 24 T23S R29E	XTO Permian Operating	XTO Delaware Basin, LLC 6401 Holiday Hill Rd Bldg 5 Midland, TX 79707	State E0589410 E058949
	Bureau of Land Management	301 Dinosaur Trail Santa Fe, NM 87508	
	New Mexico State Land Office	310 Old Santa Fe Trail Santa Fe, NM 87501	

BEATTY & WOZNIAK, P.C.

ATTORNEYS AT LAW
500 DON GASPAR AVENUE
SANTA FE, NEW MEXICO 87505
TELEPHONE 505-983-8545
FACSIMILE 800-886-6566
www.bwenergylaw.com

OFFICE LOCATIONS

COLORADONEW MEXICOWYOMING

JACOB L. EVERHART
ALSO ADMITTED IN CO, ND, UT

December 4, 2025

VIA CERTIFIED MAIL
RETURN RECEIPT REQUESTED

TO: ALL AFFECTED PERSONS

Re: Application of XTO Permian Operating, LLC, for Administrative Approval of a 2,560-acre Non-Standard Horizontal Spacing Unit (NSP) in the Purple Sage; Wolfcamp Pool [Code No: 98220] for the Nash Fed Unit comprised of all of Sections 11, 12, 13, and 14, Township 23 South, Range 29 East, N.M.P.M., Eddy County, New Mexico

To Whom It May Concern,

Enclosed is a copy of the above-referenced application filed with the New Mexico Oil Conservation Division (the "Division") on this date. Any objections that you have to these applications must be filed in writing with the New Mexico Oil Conservation Division, 1220 South St. Francis Drive, Santa Fe, New Mexico 87505, within twenty (20) days from the date the Division receives the above-referenced applications. If no objection is received within the twenty-day period, the application may be approved administratively by the Division. This Application would have been filed with, and received by, the Division either on the date of this letter as referenced above, or no later than two (2) days after the date referenced above. Email correspondence for this matter can be sent to the Division at OCD.Engineer@emnrd.nm.gov.

If you have any questions about this application, please contact the following:

Andrea Smith Bosworth, CPL, Commercial & Land Advisor – Delaware Basin
ExxonMobil
(346) 566-9466
Andrea.bosworth@exxonmobil.com

Very truly yours,

BEATTY & WOZNIAK, P.C.



Jacob L. Everhart

jeverhart@bwenergylaw.com

Attorney for XTO Permian Operating, LLC

BEATTY & WOZNIAK, P.C.

Energy in the Law®

Released by Imaging: 12/24/2025 3:42:13 PM

U.S. Postal Service™
CERTIFIED MAIL® RECEIPT
Domestic Mail Only

For delivery information, visit our website at www.usps.com®.

OFFICIAL USE

Certified Mail Fee
\$
Extra Services & Fees (check box, add fee as appropriate)
☐ Return Receipt
☐ Return Receipt
☐ Certified Mail
☐ Adult Signature
☐ Adult Signature
Postage
\$
Total Postage and Fees
\$
Sent To
Street and Apt. No., or PO Box No.
City, State, ZIP+4®
PS Form 3800, January 2023 PSN 7530-02-000-9047 See Reverse for Instructions

2510.60N

Devon Energy Production Co LP
333 West Sheridan Avenue
Oklahoma City, OK 73102

U.S. Postal Service™
CERTIFIED MAIL® RECEIPT
Domestic Mail Only

For delivery information, visit our website at www.usps.com®.

OFFICIAL USE

Certified Mail Fee
\$
Extra Services & Fees (check box, add fee as appropriate)
☐ Return Receipt
☐ Return Receipt
☐ Certified Mail
☐ Adult Signature
☐ Adult Signature
Postage
\$
Total Postage and Fees
\$
Sent To
Street and Apt. No., or PO Box No.
City, State, ZIP+4®
PS Form 3800, January 2023 PSN 7530-02-000-9047 See Reverse for Instructions

2510.60N

Titus Oil & Gas
420 Throckmorton St Ste 1150
Fort Worth, TX 76102

U.S. Postal Service™
CERTIFIED MAIL® RECEIPT
Domestic Mail Only

For delivery information, visit our website at www.usps.com®.

OFFICIAL USE

Certified Mail Fee
\$
Extra Services & Fees (check box, add fee as appropriate)
☐ Return Receipt
☐ Return Receipt
☐ Certified Mail
☐ Adult Signature
☐ Adult Signature
Postage
\$
Total Postage and Fees
\$
Sent To
Street and Apt. No., or PO Box No.
City, State, ZIP+4®
PS Form 3800, January 2023 PSN 7530-02-000-9047 See Reverse for Instructions

2510.60N

Novo Oil & Gas Northern Delaware
LLC
1001 W Wilshire Blvd Ste 206
Oklahoma City, OK 73116

U.S. Postal Service™
CERTIFIED MAIL® RECEIPT
Domestic Mail Only

For delivery information, visit our website at www.usps.com®.

OFFICIAL USE

Certified Mail Fee
\$
Extra Services & Fees (check box, add fee as appropriate)
☐ Return Receipt
☐ Return Receipt
☐ Certified Mail
☐ Adult Signature
☐ Adult Signature
Postage
\$
Total Postage and Fees
\$
Sent To
Street and Apt. No., or PO Box No.
City, State, ZIP+4®
PS Form 3800, January 2023 PSN 7530-02-000-9047 See Reverse for Instructions

2510.60N

New Mexico State Land Office
310 Old Santa Fe Trail
Santa Fe, NM 87501

U.S. Postal Service™
CERTIFIED MAIL® RECEIPT
Domestic Mail Only

For delivery information, visit our website at www.usps.com®.

OFFICIAL USE

Certified Mail Fee
\$
Extra Services & Fees (check box, add fee as appropriate)
☐ Return Receipt
☐ Return Receipt
☐ Certified Mail
☐ Adult Signature
☐ Adult Signature
Postage
\$
Total Postage and Fees
\$
Sent To
Street and Apt. No., or PO Box No.
City, State, ZIP+4®
PS Form 3800, January 2023 PSN 7530-02-000-9047 See Reverse for Instructions

2510.60N

Bureau of Land Management
301 Dinosaur Trail
Santa Fe, NM 87508

U.S. Postal Service™
CERTIFIED MAIL® RECEIPT
Domestic Mail Only

For delivery information, visit our website at www.usps.com®.

OFFICIAL USE

Certified Mail Fee
\$
Extra Services & Fees (check box, add fee as appropriate)
☐ Return Receipt
☐ Return Receipt
☐ Certified Mail
☐ Adult Signature
☐ Adult Signature
Postage
\$
Total Postage and Fees
\$
Sent To
Street and Apt. No., or PO Box No.
City, State, ZIP+4®
PS Form 3800, January 2023 PSN 7530-02-000-9047 See Reverse for Instructions

2510.60N

Echo Production
PO Box 1210
Graham, TX 76450

Sante Fe Main Office
Phone: (505) 476-3441

General Information
Phone: (505) 629-6116

Online Phone Directory
<https://www.emnrd.nm.gov/oed/contact-us>

State of New Mexico
Energy, Minerals and Natural Resources
Oil Conservation Division
1220 S. St Francis Dr.
Santa Fe, NM 87505

CONDITIONS

Action 532041

CONDITIONS

Operator: XTO PERMIAN OPERATING LLC. 3617 Big Spring St. MIDLAND, TX 79705	OGRID: 373075
	Action Number: 532041
	Action Type: [UF-NSP] Non-Standard Proration (NSP)

CONDITIONS

Created By	Condition	Condition Date
llowe	This NSP order was approved with pending API wells. The owner of the NSP shall update the OCD when API number(s) are assigned to those pending APD well(s) by sending an e-mail to ocd.engineer@emnrd.nm.gov . TITLED: Updating NSP-XXX with API number(s) and associated Well Name.	1/20/2026
llowe	If the Operator wants to add existing wells within the same NSP HSU, the operator will need to submit a C-103 X or Z to the OCD online portal. The sundry shall state the following: "Adding Wells to an NSP HSU: Well Name, Well API No., Pool Name, Pool Code, NSP Order Number". Send an email to ocd.engineer@emnrd.nm.gov . TITLED: Adding existing wells to NSP-XXXX, C-103 X or Z. NSP-XXXX.	1/20/2026