

State of New Mexico
Energy, Minerals and Natural Resources Department

Michelle Lujan-Grisham
Governor

Erin Taylor
Acting Cabinet Secretary

Ben Shelton
Deputy Secretary

Albert C. S. Chang
Division Director
Oil Conservation Division



Paula M. Vance,
pmvance@hollandhart.com

Administrative Order NSP – 2327

ADMINISTRATIVE NON-STANDARD HORIZONTAL SPACING UNIT

XTO Permian Operating, LLC [OGRID 373075]

Poker Lake Unit 20 17 BD Well No. 201H [API No. 30-015-56754]

Poker Lake Unit 20 17 BD Well No. 202H [API No. 30-015-56755]

Poker Lake Unit 20 17 BD Well No. 203H [API No. 30-015-PENDING]

HSU: W/2 Section 20, W/2 Section 17, & E/2 SW/4 Section 08, T25S R30E, Eddy County

Reference is made to your application received on August 20th, 2025.

You have requested approval of a non-standard horizontal spacing unit to be included in your proposed horizontal spacing unit, as follows:

Proposed Increased Horizontal Spacing Unit:

Description	Acres	Pool	Pool Code
W/2 Section 20	720	Corral Canyon; Bone Spring, South	13354
W/2 Section 17			
E/2 SW/4 Section 08			

You have requested an exception pursuant to Rule 19.15.16.15(A)(3) NMAC, to approve a non-standard horizontal spacing unit consisting of the entire area described above as the horizontal spacing unit. The proposed horizontal spacing unit does not consist of a quarter - quarter section or equivalent in both sections, as required by Rule 19.15.16.15(B)(1) NMAC.

NSP - 2327
XTO Permian Operating, LLC
Page 2 of 2

We understand that you are seeking this exception for an allowance to create a non-standard horizontal spacing unit, comprised of the Proposed Horizontal Spacing Unit referenced above within Eddy County, New Mexico.

The Division understands you have given notice of this application to all operators or owners who are "affected persons," as defined in Paragraph (8) Subsection A of 19.15.2.7 NMAC, in all adjoining units which are to be being included.

You have requested this non-standard horizontal spacing unit in order to obtain a fair share of oil and gas within the unit and to avoid the drilling of unnecessary wells within the Bone Spring formation. Thus, preventing waste underlying the W/2 Section 20, W/2 Section 17 and the E/2 SW/4 Section 08 within the referenced Horizontal Spacing Unit.

Pursuant to the authority conferred by Division Rule 19.15.16.15(B)(5) NMAC, the above-described **non-standard horizontal spacing unit is hereby approved**. Further, the Applicant may add additional wells to the non-standard spacing unit, the well(s) must be in the same horizontal spacing unit and pool/formation. The new well's APD shall reference this NSP order number on Form C-102 with an adjacent letter stating this request.

General Provisions

The above approvals are subject to your being in compliance with all other applicable Division rules, including, but not limited to Division Rule 19.15.5.9 NMAC.

Jurisdiction of this case is retained for the entry of such further orders as the Division may deem necessary.



Gerasimos Razatos for Albert Chang

Albert C.S. Chang
Division Director
AC/lrl

Date: 2/24/2026

ID NO. 497620

NSP - 2327

Revised March 23, 2017

RECEIVED: 08/20/25	REVIEWER:	TYPE:	APP NO:
---------------------------	-----------	-------	---------

ABOVE THIS TABLE FOR OCD DIVISION USE ONLY

NEW MEXICO OIL CONSERVATION DIVISION
 - Geological & Engineering Bureau -
 1220 South St. Francis Drive, Santa Fe, NM 87505



ADMINISTRATIVE APPLICATION CHECKLIST

THIS CHECKLIST IS MANDATORY FOR ALL ADMINISTRATIVE APPLICATIONS FOR EXCEPTIONS TO DIVISION RULES AND REGULATIONS WHICH REQUIRE PROCESSING AT THE DIVISION LEVEL IN SANTA FE

Applicant: XTO Permian Operating, LLC **OGRID Number:** 373075
Well Name: Poker Lake Unit 20-17 BD wells **API:** 30-015-various
Pool: Corral Canyon; Bone Spring, South **Pool Code:** 13354

SUBMIT ACCURATE AND COMPLETE INFORMATION REQUIRED TO PROCESS THE TYPE OF APPLICATION INDICATED BELOW

- 1) **TYPE OF APPLICATION:** Check those which apply for [A]
 A. Location - Spacing Unit - Simultaneous Dedication
 NSL NSP (PROJECT AREA) NSP (PRORATION UNIT) SD
- B. Check one only for [I] or [II]
 [I] Commingling - Storage - Measurement
 DHC CTB PLC PC OLS OLM
 [II] Injection - Disposal - Pressure Increase - Enhanced Oil Recovery
 WFX PMX SWD IPI EOR PPR

- 2) **NOTIFICATION REQUIRED TO:** Check those which apply.
 A. Offset operators or lease holders
 B. Royalty, overriding royalty owners, revenue owners
 C. Application requires published notice
 D. Notification and/or concurrent approval by SLO
 E. Notification and/or concurrent approval by BLM
 F. Surface owner
 G. For all of the above, proof of notification or publication is attached, and/or,
 H. No notice required

<u>FOR OCD ONLY</u>	
<input type="checkbox"/>	Notice Complete
<input type="checkbox"/>	Application Content Complete

3) **CERTIFICATION:** I hereby certify that the information submitted with this application for administrative approval is **accurate** and **complete** to the best of my knowledge. I also understand that **no action** will be taken on this application until the required information and notifications are submitted to the Division.

Note: Statement must be completed by an individual with managerial and/or supervisory capacity.

Paula M. Vance

Print or Type Name

Signature

08/20/2025
Date

505-988-4421
Phone Number

pmvance@hollandhart.com
e-mail Address



Paula M. Vance
Associate
Phone (505) 954-7286
PMVance@hollandhart.com

August 20, 2025

VIA ONLINE FILING

Albert Chang, Division Director
Oil Conservation Division
Energy, Minerals and Natural Resources Department
1220 South Saint Francis Drive
Santa Fe, New Mexico 87505

**Re: XTO Permian Operating, LLC
Request for Administrative Approval of a Non-Standard Horizontal Spacing Unit**

720-acre non-standard horizontal spacing unit
Corral Canyon; Bone Spring, South [13354]
E/2 SW/4 of Section 8, and the W/2 of Sections 17 and 20, Township 25 South, Range 30
East, NMPM, Eddy County, New Mexico

Dear Mr. Chang:

XTO Permian Operating, LLC (“XTO”) (OGRID No. 373075), pursuant to Division Rules 19.15.16.15(B)(5) and 19.15.15.11.B NMAC and applicable rules governing acreage and well spacing requirements for the Corral Canyon; Bone Spring, South [13354], seeks administrative approval of a non-standard 720-acre, more or less, horizontal spacing unit comprised of the E/2 SW/4 of Section 8, and the W/2 of Sections 17 and 20, Township 25 South, Range 30 East, NMPM, Eddy County, New Mexico. The non-standard spacing unit will be dedicated to the following wells:

- **Poker Lake Unit 20-17 BD 201H** (API No. 30-015-56754)
- **Poker Lake Unit 20-17 BD 202H** (API No. 30-015-56755)
- **Poker Lake Unit 20-17 BD 203H** (API No. 30-015-PENDING)

The formation of this non-standard spacing unit is limited by the outer boundary of the unitized lands encompassing the Poker Lake Unit (“PLU”), which has less than the minimum acreage required by statewide oil rules. Thus, approval is necessary to match the spacing formed by the PLU so XTO can obtain its just and fair share of the oil and gas underlying the subject unitized lands, avoid the drilling of unnecessary wells, prevent waste, and protect correlative rights.

T 505.988.4421 F 505.983.6043
110 North Guadalupe, Suite 1, Santa Fe, NM 87501-1849
Mail to: P.O. Box 2208, Santa Fe, NM 87504-2208
www.hollandhart.com

Alaska	Montana	Utah
Colorado	Nevada	Washington, D.C.
Idaho	New Mexico	Wyoming



Paula M. Vance
Associate
Phone (505) 954-7286
 PMVance@hollandhart.com

Exhibit A is a plat showing the proposed non-standard horizontal spacing unit, including the federal and state leases comprising XTO’s Poker Lake Unit, along with a general Unit map. Exhibit A also shows the affected offset acreage for the proposed non-standard horizontal spacing unit. The affected offset acreage is a state lease comprised of the W/2 SW/4, Township 25 South, Range 30 East.

Exhibit B is a Form C-102 for each of the wells within the proposed non-standard spacing unit.

Exhibit C is a spreadsheet listing all “affected persons”¹ in the affected offset acreage to be noticed. Exhibit C also includes tracking information demonstrating that each of the affected persons was sent a copy of this application with all attachments by certified mail advising that any objections must be filed in writing with the Division within 20 days from the date the Division receives the application. A copy of this application has been provided to the New Mexico State Land Office since state lands are involved.

Your attention to this matter is appreciated.

Sincerely,

A handwritten signature in blue ink that reads "Paula M. Vance".

Paula M. Vance
ATTORNEY FOR
XTO PERMIAN OPERATING, LLC

¹ See NMAC §§ 19.15.2.7.A(8) [defining “affected persons” as, “in the absence of an operator, or with respect to an application wherein the operator of the spacing unit or identified tract is the applicant, each working interest owner”] and 19.15.4.12.A(2)(a).

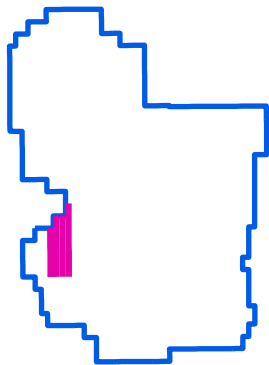
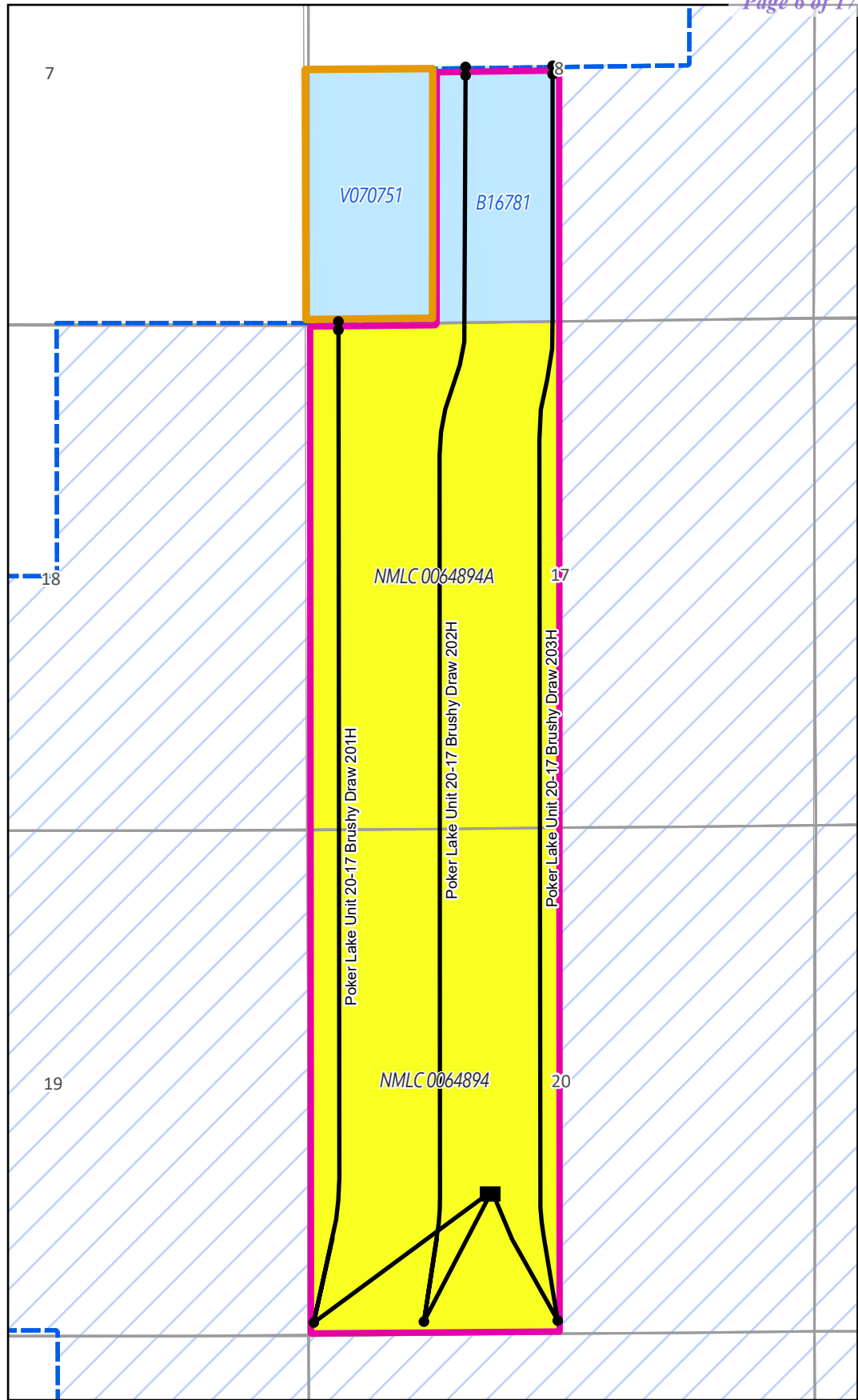


Poker Lake Unit Brushy Draw 20-17 201H, 202H, 203H

NSP Exhibit Bonespring Pool

Notification Area:
SEC 8: W2SW
80 Acres

- Surface Hole
- Takepoints
- Poker Lake Unit 20-17 Brushy Draw 201H, 202H, 203H
- ▭ Proposed Horizontal Spacing Unit
- ▭ Notification Area: ConocoPhillips
- ▭ Poker Lake Federal Unit
- ▭ State Acreage
- ▭ Federal Acreage



Poker Lake Unit

EXHIBIT
A

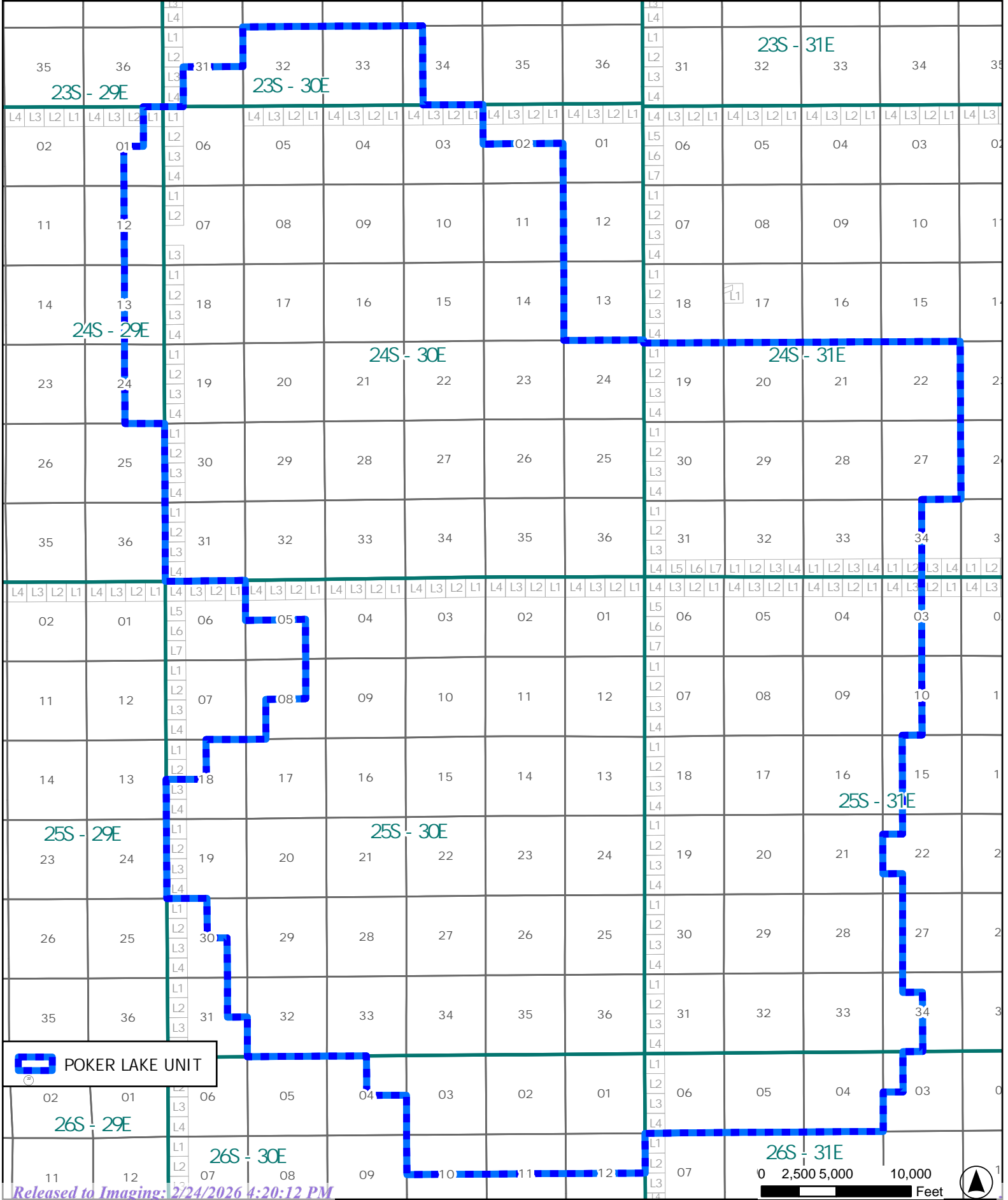
Poker Lake Unit



POKER LAKE UNIT EDDY COUNTY, NEW MEXICO

Land GIS Dept. O:\review\Projects\Kellin_Project_APRX\Delaware Federal Unit\PODs\Delaware Federal Unit\PODs.aprx Layout PLU LEASES

Date: 5/22/2025



ACREAGE DEDICATION PLATS

This grid represents a standard section. You may superimpose a non-standard section, or a larger area, over this grid. Operators must outline the dedicated acreage in a red box, clearly show the well surface location and bottom hole location, if it is directionally drilled, with the dimensions from the section lines in the cardinal directions. If this is a horizontal wellbore show on this plat the location of the First Take Point and Last Take Point, and the point within the Completed interval (other than the First Take Point or Last Take Point) that is the closest to any outer boundary of the tract.

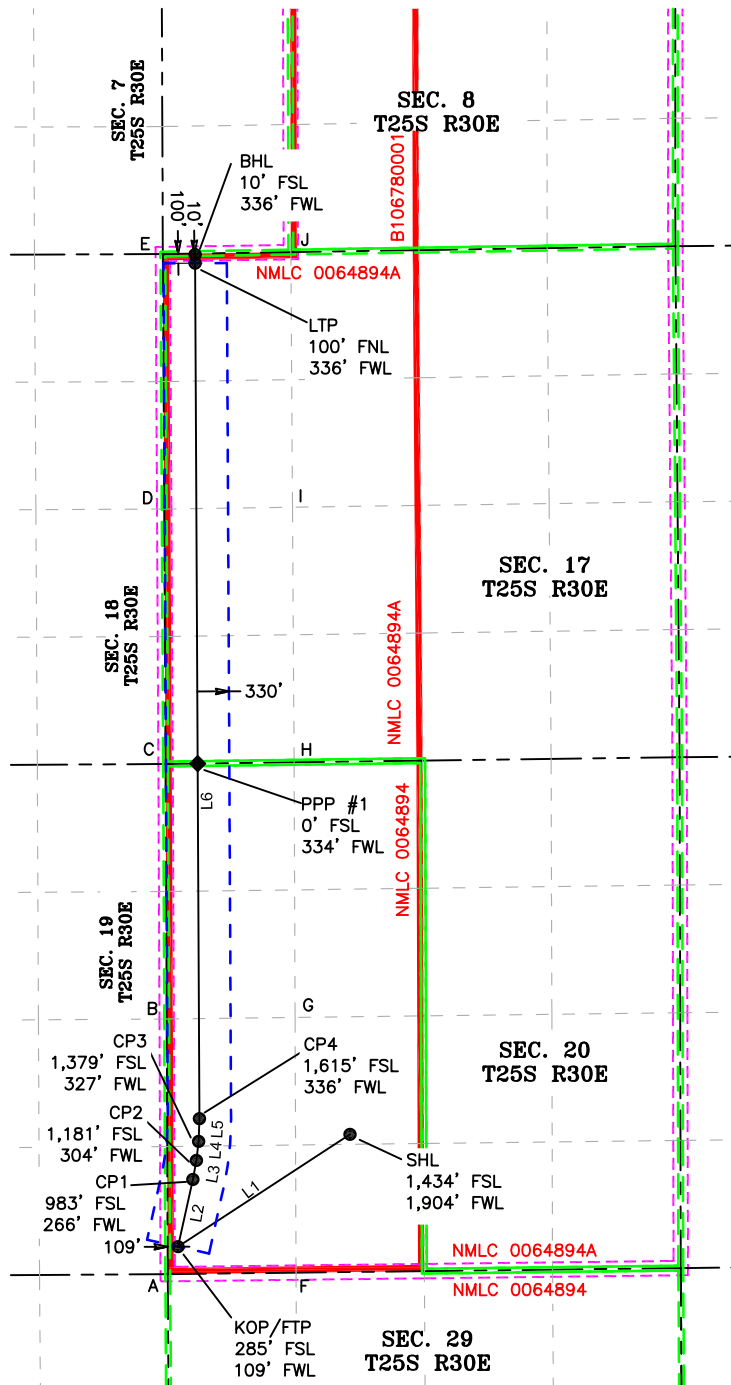
Surveyors shall use the latest United States government survey or dependent resurvey. Well locations will be in reference to the New Mexico Principal Meridian. If the land is not surveyed, contact the OCD Engineering Bureau. Independent subdivision surveys will not be acceptable.

LEGEND

- SECTION LINE
- PROPOSED WELLBORE
- NEW MEXICO MINERAL LEASE LINE
- 330' BUFFER
- DEDICATED ACREAGE
- CORRAL CANYON; BONE SPRING, SOUTH POOL (13354)

LINE TABLE		
LINE	AZIMUTH	LENGTH
L1	236° 49'55"	2,138.36'
L2	12° 26'10"	716.28'
L3	10° 28'40"	201.94'
L4	06° 27'24"	199.95'
L5	02° 05'42"	236.39'
L6	359° 42'57"	9,001.85'

COORDINATE TABLE					
SHL (NAD 83 NME)			KOP/FTP (NAD 83 NME)		
Y =	404,823.6	N	Y =	403,653.8	N
X =	673,669.5	E	X =	671,879.6	E
LAT. =	32.112218	°N	LAT. =	32.109022	°N
LONG. =	103.905920	°W	LONG. =	103.911716	°W
LTP (NAD 83 NME)			BHL (NAD 83 NME)		
Y =	413,898.5	N	Y =	413,988.5	N
X =	672,057.5	E	X =	672,057.0	E
LAT. =	32.137181	°N	LAT. =	32.137429	°N
LONG. =	103.911011	°W	LONG. =	103.911012	°W
P1 (NAD 83 NME)			P2 (NAD 83 NME)		
Y =	404,353.2	N	Y =	404,551.8	N
X =	672,033.8	E	X =	672,070.5	E
LAT. =	32.110943	°N	LAT. =	32.111488	°N
LONG. =	103.911209	°W	LONG. =	103.911088	°W
P3 (NAD 83 NME)			P4 (NAD 83 NME)		
Y =	404,750.5	N	Y =	404,986.7	N
X =	672,093.0	E	X =	672,101.7	E
LAT. =	32.112034	°N	LAT. =	32.112683	°N
LONG. =	103.911012	°W	LONG. =	103.910982	°W
SHL (NAD 27 NME)			KOP/FTP (NAD 27 NME)		
Y =	404,765.2	N	Y =	403,595.5	N
X =	632,484.7	E	X =	630,694.8	E
LAT. =	32.112093	°N	LAT. =	32.108897	°N
LONG. =	103.905437	°W	LONG. =	103.911232	°W
LTP (NAD 27 NME)			BHL (NAD 27 NME)		
Y =	413,839.9	N	Y =	413,929.9	N
X =	630,873.0	E	X =	630,872.5	E
LAT. =	32.137056	°N	LAT. =	32.137304	°N
LONG. =	103.910527	°W	LONG. =	103.910527	°W
P1 (NAD 27 NME)			P2 (NAD 27 NME)		
Y =	404,294.8	N	Y =	404,493.4	N
X =	630,849.0	E	X =	630,885.7	E
LAT. =	32.110818	°N	LAT. =	32.111363	°N
LONG. =	103.910725	°W	LONG. =	103.910604	°W
P3 (NAD 27 NME)			P4 (NAD 27 NME)		
Y =	404,692.1	N	Y =	404,928.3	N
X =	630,908.2	E	X =	630,916.9	E
LAT. =	32.111909	°N	LAT. =	32.112558	°N
LONG. =	103.910529	°W	LONG. =	103.910498	°W
PPP #1 (NAD 83 NME)			PPP #1 (NAD 27 NME)		
Y =	408,686.0	N	Y =	408,627.5	N
X =	672,083.3	E	X =	630,898.6	E
LAT. =	32.122852	°N	LAT. =	32.122727	°N
LONG. =	103.910994	°W	LONG. =	103.910510	°W



CORNER COORDINATES (NAD83 NME)					
A - Y =	403,367.5	N	A - X =	671,771.7	E
B - Y =	406,024.9	N	B - X =	671,761.0	E
C - Y =	408,681.5	N	C - X =	671,749.3	E
D - Y =	411,337.4	N	D - X =	671,735.3	E
E - Y =	413,993.2	N	E - X =	671,721.0	E
F - Y =	403,383.2	N	F - X =	673,108.1	E
G - Y =	406,041.4	N	G - X =	673,098.4	E
H - Y =	408,699.2	N	H - X =	673,088.1	E
I - Y =	411,356.4	N	I - X =	673,071.3	E
J - Y =	414,014.0	N	J - X =	673,054.3	E
CORNER COORDINATES (NAD27 NME)					
A - Y =	403,309.2	N	A - X =	630,586.9	E
B - Y =	405,966.5	N	B - X =	630,576.2	E
C - Y =	408,623.0	N	C - X =	630,564.6	E
D - Y =	411,278.9	N	D - X =	630,550.7	E
E - Y =	413,934.6	N	E - X =	630,536.5	E
F - Y =	403,324.9	N	F - X =	631,923.2	E
G - Y =	405,983.0	N	G - X =	631,913.6	E
H - Y =	408,640.7	N	H - X =	631,903.4	E
I - Y =	411,297.9	N	I - X =	631,886.7	E
J - Y =	413,955.4	N	J - X =	631,869.8	E



2205 Walnut Street - Columbus, TX 78934
 Ph: 817.349.9800 - Fax: 979.732.5271
 TBPE Firm 17957 | TBPLS Firm 10000100
 www.fscinc.net

DATE: 8-6-2025 PROJECT NO: 2024060273
 DRAWN BY: LM SCALE: 1" = 2,500'
 CHECKED BY: CH SHEET: 2 OF 2
 FIELD CREW: IR REVISION: NO

© COPYRIGHT 2025 - ALL RIGHTS RESERVED

ACREAGE DEDICATION PLATS

This grid represents a standard section. You may superimpose a non-standard section, or a larger area, over this grid. Operators must outline the dedicated acreage in a red box, clearly show the well surface location and bottom hole location, if it is directionally drilled, with the dimensions from the section lines in the cardinal directions. If this is a horizontal wellbore show on this plat the location of the First Take Point and Last Take Point, and the point within the Completed interval (other than the First Take Point or Last Take Point) that is the closest to any outer boundary of the tract.

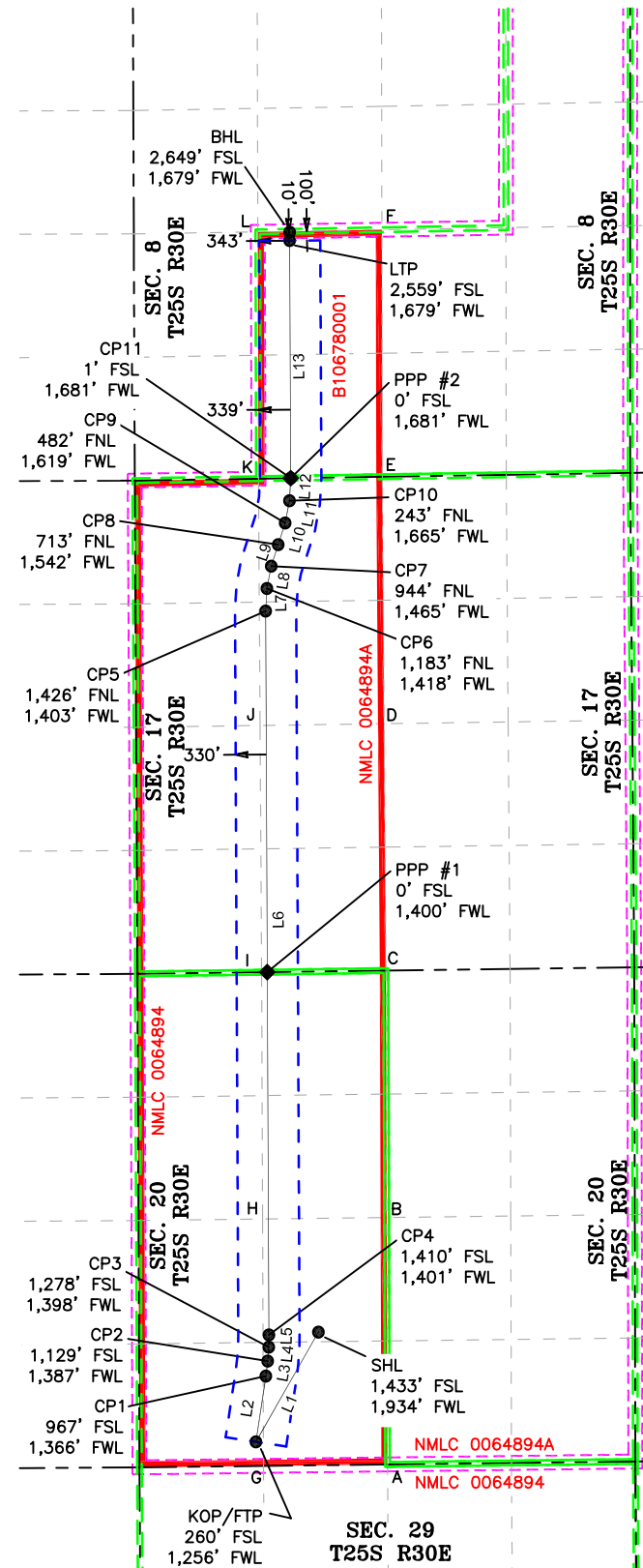
Surveyors shall use the latest United States government survey or dependent resurvey. Well locations will be in reference to the New Mexico Principal Meridian. If the land is not surveyed, contact the OCD Engineering Bureau. Independent subdivision surveys will not be acceptable.

LEGEND

- SECTION LINE
- PROPOSED WELLBORE
- NEW MEXICO MINERAL LEASE LINE
- 330' BUFFER
- DEDICATED ACREAGE
- CORRAL CANYON; BONE SPRING, SOUTH POOL (13354)

LINE TABLE		
LINE	AZIMUTH	LENGTH
L1	209° 40'25"	1,359.22'
L2	08° 37'56"	716.32'
L3	06° 59'58"	163.27'
L4	03° 54'06"	149.97'
L5	01° 03'51"	131.69'
L6	359° 44'18"	7,794.83'
L7	03° 25'11"	244.13'
L8	10° 45'07"	244.12'
L9	18° 03'09"	244.13'
L10	18° 00'31"	244.12'
L11	10° 40'40"	244.12'
L12	03° 22'21"	244.14'
L13	359° 44'04"	2,648.22'

COORDINATE TABLE			
SHL (NAD 83 NME)		KOP/FTP (NAD 83 NME)	
Y =	404,823.2	N	Y = 403,642.3
X =	673,699.5	E	X = 673,026.6
LAT. =	32.112217	"N	LAT. = 32.108978
LONG. =	103.905823	"W	LONG. = 103.908011
LTP (NAD 83 NME)		BHL (NAD 83 NME)	
Y =	416,578.2	N	Y = 416,668.2
X =	673,390.0	E	X = 673,389.6
LAT. =	32.144533	"N	LAT. = 32.144780
LONG. =	103.906672	"W	LONG. = 103.906672
P1 (NAD 83 NME)		P2 (NAD 83 NME)	
Y =	404,350.5	N	Y = 404,512.5
X =	673,134.1	E	X = 673,154.0
LAT. =	32.110923	"N	LAT. = 32.111368
LONG. =	103.907655	"W	LONG. = 103.907589
P3 (NAD 83 NME)		P4 (NAD 83 NME)	
Y =	404,662.1	N	Y = 404,793.8
X =	673,164.2	E	X = 673,166.7
LAT. =	32.111780	"N	LAT. = 32.112142
LONG. =	103.907554	"W	LONG. = 103.907544
P5 (NAD 83 NME)		P6 (NAD 83 NME)	
Y =	412,588.6	N	Y = 412,632.2
X =	673,131.1	E	X = 673,145.6
LAT. =	32.133569	"N	LAT. = 32.134238
LONG. =	103.907560	"W	LONG. = 103.907510
P7 (NAD 83 NME)		P8 (NAD 83 NME)	
Y =	413,072.1	N	Y = 413,304.2
X =	673,191.2	E	X = 673,266.8
LAT. =	32.134897	"N	LAT. = 32.135534
LONG. =	103.907359	"W	LONG. = 103.907112
P9 (NAD 83 NME)		P10 (NAD 83 NME)	
Y =	414,020.0	N	Y = 413,776.3
X =	673,401.9	E	X = 673,387.5
LAT. =	32.137501	"N	LAT. = 32.136831
LONG. =	10.906666	"W	LONG. = 103.906716
SHL (NAD 27 NME)		KOP/FTP (NAD 27 NME)	
Y =	404,764.8	N	Y = 403,584.0
X =	632,514.7	E	X = 631,841.7
LAT. =	32.112092	"N	LAT. = 32.108853
LONG. =	103.905340	"W	LONG. = 103.907528
LTP (NAD 27 NME)		BHL (NAD 27 NME)	
Y =	416,519.5	N	Y = 416,609.5
X =	632,205.6	E	X = 632,205.2
LAT. =	32.144408	"N	LAT. = 32.144655
LONG. =	103.906187	"W	LONG. = 103.906188
P1 (NAD 27 NME)		P2 (NAD 27 NME)	
Y =	404,292.1	N	Y = 404,454.1
X =	631,949.3	E	X = 631,969.2
LAT. =	32.110798	"N	LAT. = 32.111243
LONG. =	103.907172	"W	LONG. = 103.907105
P3 (NAD 27 NME)		P4 (NAD 27 NME)	
Y =	404,603.7	N	Y = 404,735.4
X =	631,979.4	E	X = 631,981.9
LAT. =	32.111655	"N	LAT. = 32.112017
LONG. =	103.907071	"W	LONG. = 103.907061
P5 (NAD 27 NME)		P6 (NAD 27 NME)	
Y =	412,530.0	N	Y = 412,773.6
X =	631,946.5	E	X = 631,961.0
LAT. =	32.133444	"N	LAT. = 32.134113
LONG. =	103.907075	"W	LONG. = 103.907025
P7 (NAD 27 NME)		P8 (NAD 27 NME)	
Y =	413,013.5	N	Y = 413,245.6
X =	632,006.6	E	X = 632,082.3
LAT. =	32.134772	"N	LAT. = 32.135410
LONG. =	103.906875	"W	LONG. = 103.906628
P9 (NAD 27 NME)		P10 (NAD 27 NME)	
Y =	413,477.8	N	Y = 413,717.7
X =	632,157.8	E	X = 632,203.0
LAT. =	32.136047	"N	LAT. = 32.136706
LONG. =	103.906381	"W	LONG. = 103.906232
PPP #1 (NAD 83 NME)		PPP #1 (NAD 27 NME)	
Y =	408,700.0	N	Y = 408,641.5
X =	673,148.8	E	X = 631,964.1
LAT. =	32.122879	"N	LAT. = 32.122754
LONG. =	103.907552	"W	LONG. = 103.907068
PPP #2 (NAD 83 NME)		PPP #2 (NAD 27 NME)	
Y =	414,019.4	N	Y = 413,960.8
X =	673,401.9	E	X = 632,217.4
LAT. =	32.137499	"N	LAT. = 32.137374
LONG. =	103.906667	"W	LONG. = 103.906182



CORNER COORDINATES (NAD83 NME)			
A - Y =	403,398.9	N	A - X = 674,444.4
B - Y =	406,057.8	N	B - X = 674,435.7
C - Y =	408,716.9	N	C - X = 674,426.9
D - Y =	411,375.4	N	D - X = 674,407.3
E - Y =	414,034.7	N	E - X = 674,387.7
F - Y =	416,694.9	N	F - X = 674,383.2
G - Y =	403,383.2	N	G - X = 673,108.1
H - Y =	406,041.4	N	H - X = 673,098.4
I - Y =	408,699.2	N	I - X = 673,088.1
J - Y =	411,356.4	N	J - X = 673,071.3
K - Y =	414,014.0	N	K - X = 673,054.3
L - Y =	416,672.4	N	L - X = 673,047.0

CORNER COORDINATES (NAD27 NME)			
A - Y =	403,340.6	N	A - X = 633,259.5
B - Y =	405,999.4	N	B - X = 633,250.9
C - Y =	408,658.4	N	C - X = 633,242.2
D - Y =	411,316.9	N	D - X = 633,222.7
E - Y =	413,976.1	N	E - X = 633,203.2
F - Y =	416,636.2	N	F - X = 633,198.7
G - Y =	403,324.9	N	G - X = 631,923.2
H - Y =	405,983.0	N	H - X = 631,913.6
I - Y =	408,640.7	N	I - X = 631,903.4
J - Y =	411,297.9	N	J - X = 631,886.7
K - Y =	413,955.4	N	K - X = 631,869.8
L - Y =	416,613.7	N	L - X = 631,862.6



2205 Walnut Street
 Columbus, TX 78934
 Ph: 817.349.9800 - Fax: 979.732.5271
 TBPE Firm 17957 | TBPLS Firm 10000100
 www.fscinc.net
 © COPYRIGHT 2025 - ALL RIGHTS RESERVED

DATE: 8-6-2025 PROJECT NO: 2024060274
 DRAWN BY: LM SCALE: 1" = 2,000'
 CHECKED BY: WL SHEET: 2 OF 2
 FIELD CREW: IR REVISION: NO

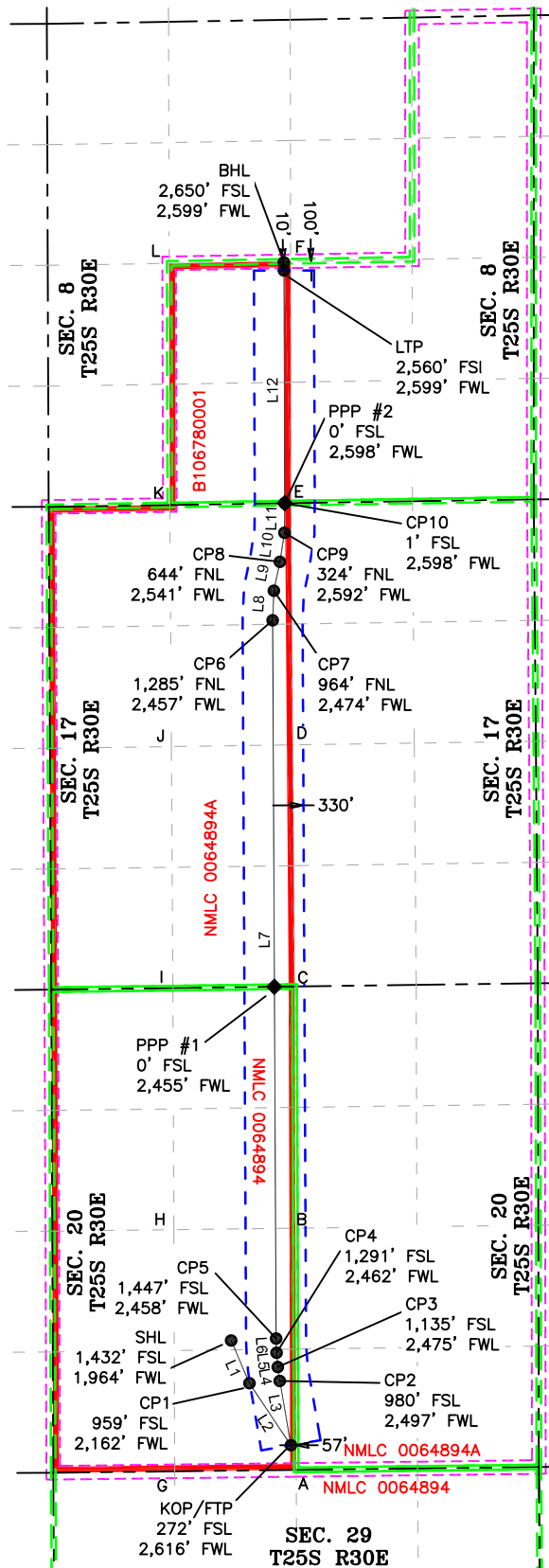
ACREAGE DEDICATION PLATS

This grid represents a standard section. You may superimpose a non-standard section, or a larger area, over this grid. Operators must outline the dedicated acreage in a red box, clearly show the well surface location and bottom hole location, if it is directionally drilled, with the dimensions from the section lines in the cardinal directions. If this is a horizontal wellbore show on this plat the location of the First Take Point and Last Take Point, and the point within the Completed interval (other than the First Take Point or Last Take Point) that is the closest to any outer boundary of the tract.

Surveyors shall use the latest United States government survey or dependent resurvey. Well locations will be in reference to the New Mexico Principal Meridian. If the land is not surveyed, contact the OCD Engineering Bureau. Independent subdivision surveys will not be acceptable.

LINE TABLE		
LINE	AZIMUTH	LENGTH
L1	156° 56'16"	511.57'
L2	146° 11'29"	820.61'
L3	350° 12'40"	716.63'
L4	351° 49'51"	156.55'
L5	354° 56'29"	156.56'
L6	358° 03'42"	156.55'
L7	359° 43'21"	7,902.59'
L8	02° 32'38"	324.68'
L9	11° 42'33"	324.67'
L10	08° 47'36"	324.58'
L11	00° 38'31"	324.90'
L12	359° 48'15"	2,649.39'

COORDINATE TABLE					
SHL (NAD 83 NME)			KOP/FTP (NAD 83 NME)		
Y =	404,822.8	N	Y =	403,670.3	N
X =	673,729.5	E	X =	674,386.5	E
LAT. =	32.112215	°N	LAT. =	32.109040	°N
LONG. =	103.905726	°W	LONG. =	103.903619	°W
LTP (NAD 83 NME)			BHL (NAD 83 NME)		
Y =	416,593.7	N	Y =	416,683.7	N
X =	674,309.9	E	X =	674,309.6	E
LAT. =	32.144565	°N	LAT. =	32.144813	°N
LONG. =	103.903700	°W	LONG. =	103.903700	°W
P1 (NAD 83 NME)		P2 (NAD 83 NME)			
Y =	404,352.1	N	Y =	404,376.5	N
X =	673,929.9	E	X =	674,264.7	E
LAT. =	32.110919	°N	LAT. =	32.110982	°N
LONG. =	103.905085	°W	LONG. =	103.904003	°W
P3 (NAD 83 NME)		P4 (NAD 83 NME)			
Y =	404,531.4	N	Y =	404,687.4	N
X =	674,242.4	E	X =	674,228.6	E
LAT. =	32.111409	°N	LAT. =	32.111837	°N
LONG. =	103.904073	°W	LONG. =	103.904116	°W
P5 (NAD 83 NME)		P6 (NAD 83 NME)			
Y =	404,843.9	N	Y =	412,746.4	N
X =	674,223.3	E	X =	674,185.1	E
LAT. =	32.112268	°N	LAT. =	32.133991	°N
LONG. =	103.904131	°W	LONG. =	103.904153	°W
P7 (NAD 83 NME)		P8 (NAD 83 NME)			
Y =	413,070.7	N	Y =	413,388.6	N
X =	674,199.5	E	X =	674,265.4	E
LAT. =	32.134883	°N	LAT. =	32.135756	°N
LONG. =	103.904102	°W	LONG. =	103.903885	°W
P9 (NAD 83 NME)		P10 (NAD 83 NME)			
Y =	413,709.4	N	Y =	414,034.3	N
X =	674,315.0	E	X =	674,318.6	E
LAT. =	32.136637	°N	LAT. =	32.137530	°N
LONG. =	103.903721	°W	LONG. =	103.903705	°W
SHL (NAD 27 NME)			KOP/FTP (NAD 27 NME)		
Y =	404,764.4	N	Y =	403,612.0	N
X =	632,544.7	E	X =	633,201.6	E
LAT. =	32.112090	°N	LAT. =	32.108915	°N
LONG. =	103.905243	°W	LONG. =	103.903136	°W
LTP (NAD 27 NME)			BHL (NAD 27 NME)		
Y =	416,535.0	N	Y =	416,625.0	N
X =	633,125.4	E	X =	633,125.1	E
LAT. =	32.144441	°N	LAT. =	32.144688	°N
LONG. =	103.903215	°W	LONG. =	103.903215	°W
P1 (NAD 27 NME)		P2 (NAD 27 NME)			
Y =	404,293.7	N	Y =	404,318.1	N
X =	632,745.0	E	X =	633,079.8	E
LAT. =	32.110794	°N	LAT. =	32.110857	°N
LONG. =	103.904602	°W	LONG. =	103.903520	°W
P3 (NAD 27 NME)		P4 (NAD 27 NME)			
Y =	404,473.0	N	Y =	404,629.0	N
X =	633,057.5	E	X =	633,043.7	E
LAT. =	32.111283	°N	LAT. =	32.111712	°N
LONG. =	103.903590	°W	LONG. =	103.903633	°W
P5 (NAD 27 NME)		P6 (NAD 27 NME)			
Y =	404,785.5	N	Y =	412,687.8	N
X =	633,038.4	E	X =	633,000.5	E
LAT. =	32.112143	°N	LAT. =	32.133866	°N
LONG. =	103.903648	°W	LONG. =	103.903668	°W
P7 (NAD 27 NME)		P8 (NAD 27 NME)			
Y =	413,012.1	N	Y =	413,330.0	N
X =	633,014.9	E	X =	633,080.8	E
LAT. =	32.134758	°N	LAT. =	32.135631	°N
LONG. =	103.903618	°W	LONG. =	103.903401	°W
P9 (NAD 27 NME)		P10 (NAD 27 NME)			
Y =	413,650.8	N	Y =	413,975.7	N
X =	633,130.4	E	X =	633,134.1	E
LAT. =	32.136512	°N	LAT. =	32.137405	°N
LONG. =	103.903236	°W	LONG. =	103.903220	°W
PPP #1 (NAD 83 NME)		PPP #1 (NAD 27 NME)			
Y =	408,713.9	N	Y =	408,655.4	N
X =	674,204.6	E	X =	633,019.9	E
LAT. =	32.122906	°N	LAT. =	32.122781	°N
LONG. =	103.904142	°W	LONG. =	103.903658	°W
PPP #2 (NAD 83 NME)		PPP #2 (NAD 27 NME)			
Y =	414,033.7	N	Y =	413,975.1	N
X =	674,318.4	E	X =	633,133.9	E
LAT. =	32.137528	°N	LAT. =	32.137403	°N
LONG. =	103.903705	°W	LONG. =	103.903221	°W



CORNER COORDINATES (NAD83 NME)					
A - Y =	403,398.9	N	A - X =	674,444.4	E
B - Y =	406,057.8	N	B - X =	674,435.7	E
C - Y =	408,716.9	N	C - X =	674,426.9	E
D - Y =	411,375.4	N	D - X =	674,407.3	E
E - Y =	414,034.7	N	E - X =	674,387.7	E
F - Y =	416,694.9	N	F - X =	674,383.2	E
G - Y =	403,383.2	N	G - X =	673,108.1	E
H - Y =	406,041.4	N	H - X =	673,098.4	E
I - Y =	408,699.2	N	I - X =	673,088.1	E
J - Y =	411,356.4	N	J - X =	673,071.3	E
K - Y =	414,014.0	N	K - X =	673,054.3	E
L - Y =	416,672.4	N	L - X =	673,047.0	E
CORNER COORDINATES (NAD27 NME)					
A - Y =	403,340.6	N	A - X =	633,259.5	E
B - Y =	405,999.4	N	B - X =	633,250.9	E
C - Y =	408,658.4	N	C - X =	633,242.2	E
D - Y =	411,316.9	N	D - X =	633,227.7	E
E - Y =	413,976.1	N	E - X =	633,203.2	E
F - Y =	416,636.2	N	F - X =	633,198.7	E
G - Y =	403,324.9	N	G - X =	631,923.2	E
H - Y =	405,983.0	N	H - X =	631,913.6	E
I - Y =	408,640.7	N	I - X =	631,903.4	E
J - Y =	411,297.9	N	J - X =	631,886.7	E
K - Y =	413,955.4	N	K - X =	631,869.8	E
L - Y =	416,613.7	N	L - X =	631,862.6	E



2205 Walnut Street
 Columbus, TX 78934
 Ph: 817.349.9800 - Fax: 979.732.5271
 TBPE Firm 17957 | TBPLS Firm 10000100
 www.fscinc.net
 © COPYRIGHT 2025 - ALL RIGHTS RESERVED

DATE: 8-6-2025 PROJECT NO: 2024060275
 DRAWN BY: LM SCALE: 1" = 2,000'
 CHECKED BY: WL SHEET: 2 OF 2
 FIELD CREW: IR REVISION: NO



New Mexico State Land Office	310 Old Santa Fe, Trail	Santa Fe	NM	87501
New Mexico State Land Office	P.O. Box 1148	Santa Fe	NM	87504
Conoco Phillips Company	600 W. Illinois Ave.	Midland	TX	79701



Paula M. Vance
Associate
Phone (505) 954-7286
PMVance@hollandhart.com

August 15, 2025

VIA CERTIFIED MAIL
RETURN RECEIPT REQUESTED

TO: ALL AFFECTED PERSONS

Re: XTO Permian Operating, LLC
Request for Administrative Approval of a Non-Standard Horizontal Spacing Unit

720-acre non-standard horizontal spacing unit
Corral Canyon; Bone Spring, South [13354]
E/2 SW/4 of Section 8, and the W/2 of Sections 17 and 20, Township 25 South, Range 30
East, NMPM, Eddy County, New Mexico

Ladies and Gentlemen:

Enclosed is a copy of the above-referenced application which was filed with the New Mexico Oil Conservation Division on this date. Any objection to this application must be filed in writing within twenty days from the date this application is received by the New Mexico Oil Conservation Division, 1220 South St. Francis Drive, Santa Fe, New Mexico, 87505. If no objection is received within this twenty-day period, this application may be approved administratively by the Division.

If you have any questions about this application, please contact the following:

Dustin Nuche, CPL
XTO Energy Inc.
(346) 502-0751
dustin.nuche@exxonmobil.com

Sincerely,

Paula M. Vance
ATTORNEY FOR
XTO PERMIAN OPERATING, LLC

XTO PLU 20-17 202H
Postal Delivery Report

9589 0710 5270 0300 2512 15	ConocoPhillips Company 600 W. Illinois Ave Midland TX 79701	Delivery Attempt
9589 0710 5270 0300 2511 78	New Mexico State Land Office 310 Old Santa Fe Trail Santa Fe, New Mexico 87501	Delivered
9589 0710 5270 0300 2512 08	New Mexico State Land Office P.O. Box #1148 Santa Fe, New Mexico 87504	Delivered

Sante Fe Main Office
Phone: (505) 476-3441

General Information
Phone: (505) 629-6116

Online Phone Directory
<https://www.emnrd.nm.gov/ocd/contact-us>

State of New Mexico
Energy, Minerals and Natural Resources
Oil Conservation Division
1220 S. St Francis Dr.
Santa Fe, NM 87505

CONDITIONS

Action 497620

CONDITIONS

Operator: XTO PERMIAN OPERATING LLC. 3617 Big Spring St. MIDLAND, TX 79705	OGRID: 373075
	Action Number: 497620
	Action Type: [UF-NSP] Non-Standard Proration (NSP)

CONDITIONS

Created By	Condition	Condition Date
llowe	This NSP order was approved with pending API wells. The owner of the NSP shall update the OCD when API number(s) are assigned to those pending APD well(s) by sending an e-mail to ocd.engineer@emnrd.nm.gov . TITLED: Updating NSP-XXX with API number(s) and associated Well Name.	2/24/2026
llowe	If the Operator wants to add existing wells within the same NSP HSU, the operator will need to submit a C-103 X or Z to the OCD online portal. The sundry shall state the following: "Adding Wells to an NSP HSU: Well Name, Well API No., Pool Name, Pool Code, NSP Order Number". Send an email to ocd.engineer@emnrd.nm.gov . TITLED: Adding existing wells to NSP-XXXX, C-103 X or Z. NSP-XXXX.	2/24/2026