

DATE:

DESCRIPTION:



UINTAH
ENGINEERING & LAND SURVEYING

District I
1625 N. French Dr., Hobbs, NM 88240
Phone: (575) 393-6161 Fax: (575) 393-0720
District II
811 S. First St., Artesia, NM 88210
Phone: (575) 748-1283 Fax: (575) 748-9720
District III
1000 Rio Brazos Road, Aztec, NM 87410
Phone: (505) 334-6178 Fax: (505) 334-6170
District IV
1220 S. St. Francis Dr., Santa Fe, NM 87505
Phone: (505) 476-3460 Fax: (505) 476-3462

State of New Mexico
Energy, Minerals & Natural Resources Department
OIL CONSERVATION DIVISION
1220 South St. Francis Dr.
Santa Fe, NM 87505

Form C-102
Revised August 1, 2011
Submit one copy to appropriate
District Office

☐ AMENDED REPORT

WELL LOCATION AND ACREAGE DEDICATION PLAT

¹ API Number		² Pool Code	³ Pool Name
⁴ Property Code	⁵ Property Name SATELLITE STATE COM		⁶ Well Number 304H
⁷ OGRID No. 331595	⁸ Operator Name FRANKLIN MOUNTAIN ENERGY 3, LLC		⁹ Elevation 3958.3'

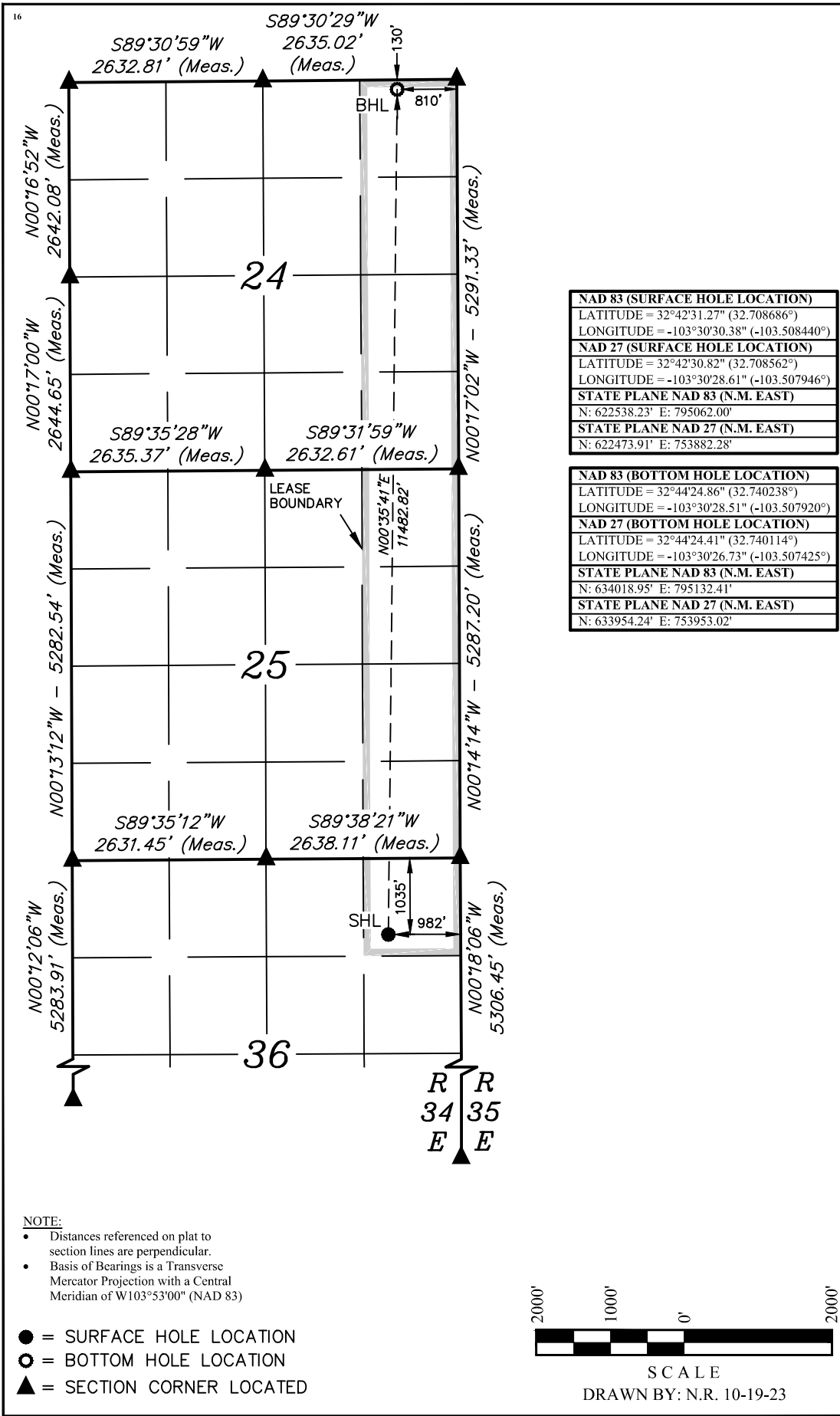
¹⁰ Surface Location

UL or lot no. A	Section 36	Township 18S	Range 34E	Lot Idn	Feet from the 1035	North/South line NORTH	Feet from the 982	East/West line EAST	County LEA
--------------------	---------------	-----------------	--------------	---------	-----------------------	---------------------------	----------------------	------------------------	---------------

¹¹ Bottom Hole Location If Different From Surface

UL or lot no. A	Section 24	Township 18S	Range 34E	Lot Idn	Feet from the 130	North/South line NORTH	Feet from the 810	East/West line EAST	County LEA
¹² Dedicated Acres 360		¹³ Joint or Infill		¹⁴ Consolidation Code		¹⁵ Order No.			

No allowable will be assigned to this completion until all interests have been consolidated or a non-standard unit has been approved by the division.



¹⁷ **OPERATOR CERTIFICATION**

I hereby certify that the information contained herein is true and complete to the best of my knowledge and belief, and that this organization either owns a working interest or unleased mineral interest in the land including the proposed bottom hole location or has a right to drill this well at this location pursuant to a contract with an owner of such a mineral or working interest, or to a voluntary pooling agreement or a compulsory pooling order heretofore entered by the division.

Signature _____ Date _____

Rachael Overbey
Printed Name

roverbey@fmccl.com
E-mail Address

¹⁸ **SURVEYOR CERTIFICATION**

I hereby certify that the well location shown on this plat was plotted from field notes of actual surveys made by me or under my supervision, and that the same is true and correct to the best of my belief.

October 05, 2023

Date of Survey _____
Signature and Seal of Professional Surveyor: _____

PAUL BUCHELE
NEW MEXICO
23782
10-19-23
PROFESSIONAL SURVEYOR

Certificate Number: _____

District I
1625 N. French Dr., Hobbs, NM 88240
Phone: (575) 393-6161 Fax: (575) 393-0720
District II
811 S. First St., Artesia, NM 88210
Phone: (575) 748-1283 Fax: (575) 748-9720
District III
1000 Rio Brazos Road, Aztec, NM 87410
Phone: (505) 334-6178 Fax: (505) 334-6170
District IV
1220 S. St. Francis Dr., Santa Fe, NM 87505
Phone: (505) 476-3460 Fax: (505) 476-3462

State of New Mexico
Energy, Minerals & Natural Resources Department
OIL CONSERVATION DIVISION
1220 South St. Francis Dr.
Santa Fe, NM 87505

Form C-102
Revised August 1, 2011
Submit one copy to appropriate
District Office

☐ AMENDED REPORT

WELL LOCATION AND ACREAGE DEDICATION PLAT

¹ API Number		² Pool Code	³ Pool Name
⁴ Property Code		⁵ Property Name SATELLITE STATE COM	
⁷ OGRID No. 331595		⁸ Operator Name FRANKLIN MOUNTAIN ENERGY 3, LLC	
		⁶ Well Number 504H	
		⁹ Elevation 3957.9'	

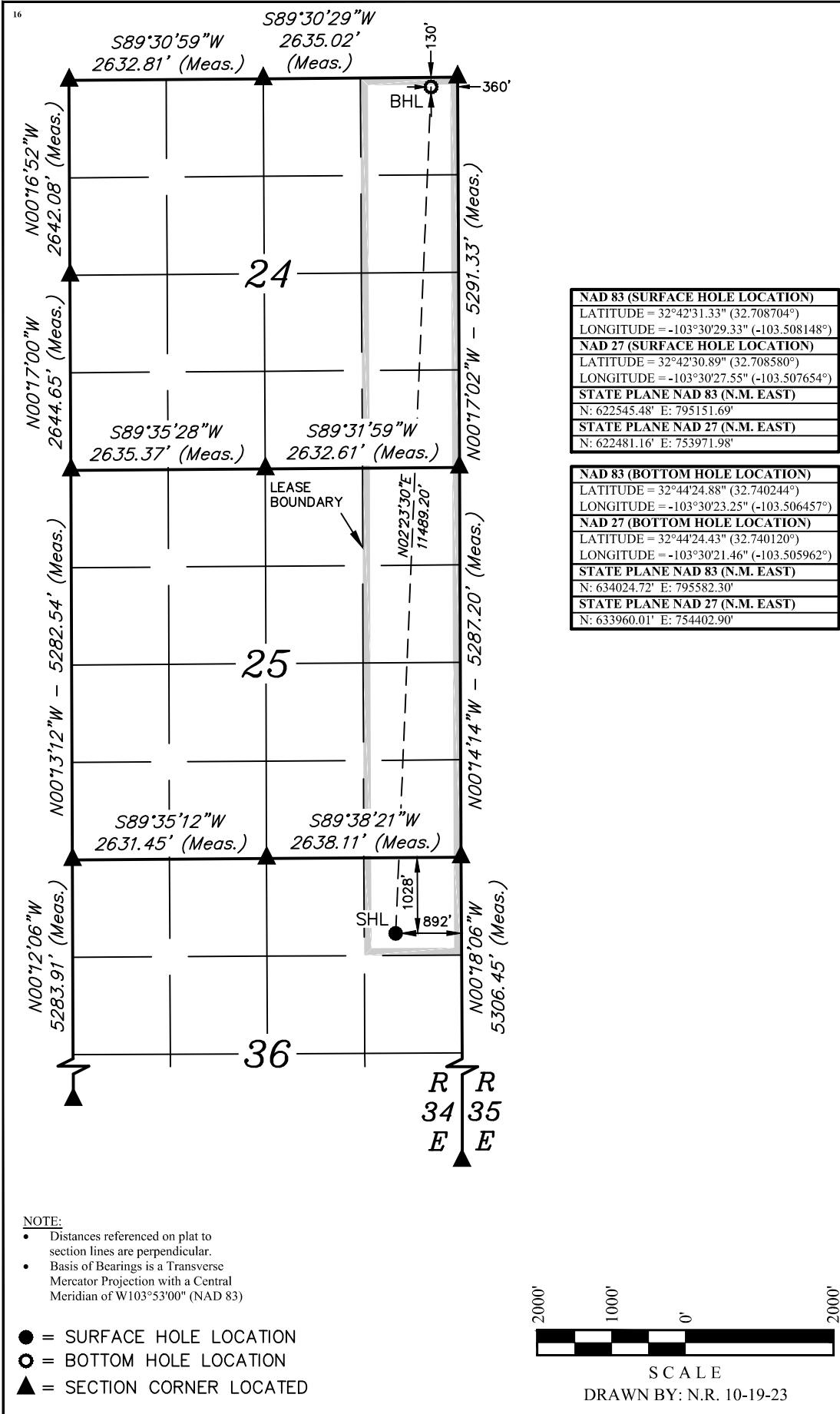
¹⁰ Surface Location

UL or lot no. A	Section 36	Township 18S	Range 34E	Lot Idn	Feet from the 1028	North/South line NORTH	Feet from the 892	East/West line EAST	County LEA
--------------------	---------------	-----------------	--------------	---------	-----------------------	---------------------------	----------------------	------------------------	---------------

¹¹ Bottom Hole Location If Different From Surface

UL or lot no. A	Section 24	Township 18S	Range 34E	Lot Idn	Feet from the 130	North/South line NORTH	Feet from the 360	East/West line EAST	County LEA
¹² Dedicated Acres 360		¹³ Joint or Infill		¹⁴ Consolidation Code		¹⁵ Order No.			

No allowable will be assigned to this completion until all interests have been consolidated or a non-standard unit has been approved by the division.



¹⁷ **OPERATOR CERTIFICATION**

I hereby certify that the information contained herein is true and complete to the best of my knowledge and belief, and that this organization either owns a working interest or unleased mineral interest in the land including the proposed bottom hole location or has a right to drill this well at this location pursuant to a contract with an owner of such a mineral or working interest, or to a voluntary pooling agreement or a compulsory pooling order heretofore entered by the division.

Signature _____ Date _____

Rachael Overbey
Printed Name

roverbey@fmccl.com
E-mail Address

¹⁸ **SURVEYOR CERTIFICATION**

I hereby certify that the well location shown on this plat was plotted from field notes of actual surveys made by me or under my supervision, and that the same is true and correct to the best of my belief.

October 05, 2023

Date of Survey _____
Signature and Seal of Professional Surveyor: _____

PAUL BUCHELE
NEW MEXICO
23782
10-19-23
PROFESSIONAL SURVEYOR

Certificate Number: _____

District I
1625 N. French Dr., Hobbs, NM 88240
Phone: (575) 393-6161 Fax: (575) 393-0720
District II
811 S. First St., Artesia, NM 88210
Phone: (575) 748-1283 Fax: (575) 748-9720
District III
1000 Rio Brazos Road, Aztec, NM 87410
Phone: (505) 334-6178 Fax: (505) 334-6170
District IV
1220 S. St. Francis Dr., Santa Fe, NM 87505
Phone: (505) 476-3460 Fax: (505) 476-3462

State of New Mexico
Energy, Minerals & Natural Resources Department
OIL CONSERVATION DIVISION
1220 South St. Francis Dr.
Santa Fe, NM 87505

Form C-102
Revised August 1, 2011
Submit one copy to appropriate
District Office

☐ AMENDED REPORT

WELL LOCATION AND ACREAGE DEDICATION PLAT

¹ API Number		² Pool Code	³ Pool Name
⁴ Property Code	⁵ Property Name SATELLITE STATE COM		⁶ Well Number 604H
⁷ OGRID No. 331595	⁸ Operator Name FRANKLIN MOUNTAIN ENERGY 3, LLC		⁹ Elevation 3958.2'

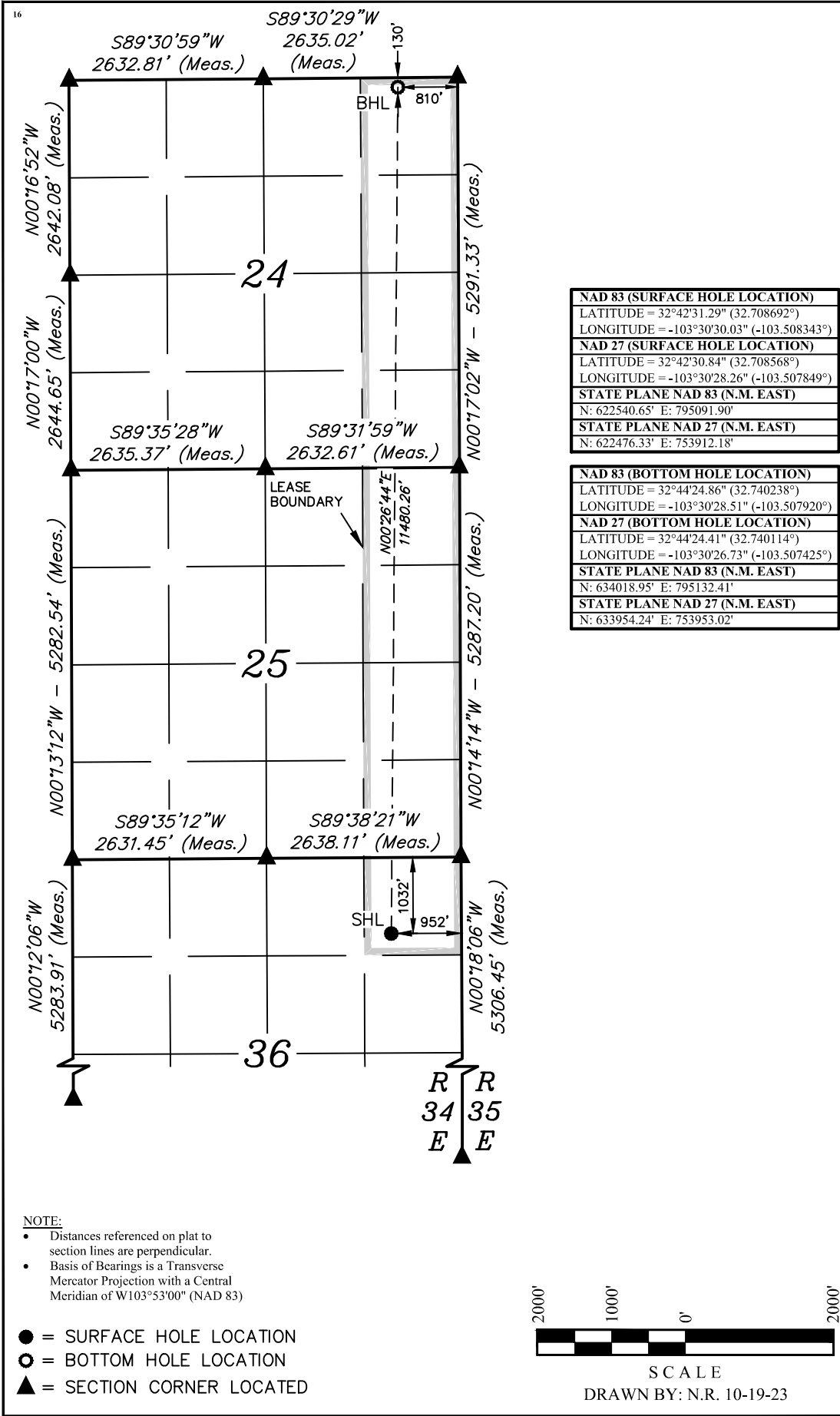
¹⁰ Surface Location

UL or lot no. A	Section 36	Township 18S	Range 34E	Lot Idn	Feet from the 1032	North/South line NORTH	Feet from the 952	East/West line EAST	County LEA
--------------------	---------------	-----------------	--------------	---------	-----------------------	---------------------------	----------------------	------------------------	---------------

¹¹ Bottom Hole Location If Different From Surface

UL or lot no. A	Section 24	Township 18S	Range 34E	Lot Idn	Feet from the 130	North/South line NORTH	Feet from the 810	East/West line EAST	County LEA
¹² Dedicated Acres 360		¹³ Joint or Infill		¹⁴ Consolidation Code		¹⁵ Order No.			

No allowable will be assigned to this completion until all interests have been consolidated or a non-standard unit has been approved by the division.



¹⁷ OPERATOR CERTIFICATION

I hereby certify that the information contained herein is true and complete to the best of my knowledge and belief, and that this organization either owns a working interest or unleased mineral interest in the land including the proposed bottom hole location or has a right to drill this well at this location pursuant to a contract with an owner of such a mineral or working interest, or to a voluntary pooling agreement or a compulsory pooling order heretofore entered by the division.

Signature _____ Date _____

Rachael Overbey
Printed Name

roverbey@fmccl.com
E-mail Address

¹⁸ SURVEYOR CERTIFICATION

I hereby certify that the well location shown on this plat was plotted from field notes of actual surveys made by me or under my supervision, and that the same is true and correct to the best of my belief.

October 05, 2023

Date of Survey _____
Signature and Seal of Professional Surveyor: _____

PAUL BUCHELE
NEW MEXICO
23782
10-19-23
PROFESSIONAL SURVEYOR

Certificate Number: _____

District I
1625 N. French Dr., Hobbs, NM 88240
Phone: (575) 393-6161 Fax: (575) 393-0720
District II
811 S. First St., Artesia, NM 88210
Phone: (575) 748-1283 Fax: (575) 748-9720
District III
1000 Rio Brazos Road, Aztec, NM 87410
Phone: (505) 334-6178 Fax: (505) 334-6170
District IV
1220 S. St. Francis Dr., Santa Fe, NM 87505
Phone: (505) 476-3460 Fax: (505) 476-3462

State of New Mexico
Energy, Minerals & Natural Resources Department
OIL CONSERVATION DIVISION
1220 South St. Francis Dr.
Santa Fe, NM 87505

Form C-102
Revised August 1, 2011
Submit one copy to appropriate
District Office

☐ AMENDED REPORT

WELL LOCATION AND ACREAGE DEDICATION PLAT

¹ API Number		² Pool Code	³ Pool Name
⁴ Property Code	⁵ Property Name SATELLITE STATE COM		⁶ Well Number 704H
⁷ OGRID No. 331595	⁸ Operator Name FRANKLIN MOUNTAIN ENERGY 3, LLC		⁹ Elevation 3958.1'

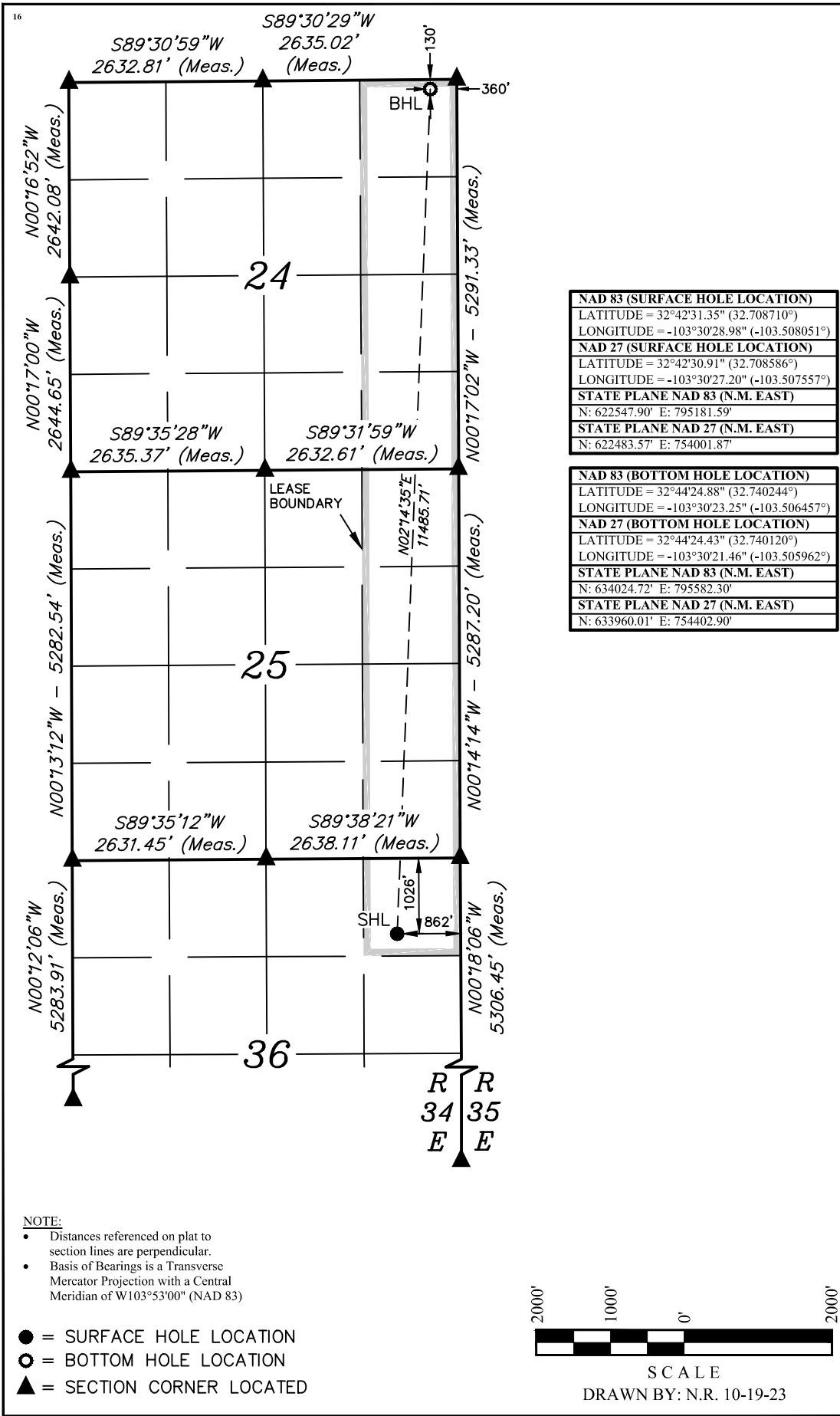
¹⁰ Surface Location

UL or lot no. A	Section 36	Township 18S	Range 34E	Lot Idn	Feet from the 1026	North/South line NORTH	Feet from the 862	East/West line EAST	County LEA
--------------------	---------------	-----------------	--------------	---------	-----------------------	---------------------------	----------------------	------------------------	---------------

¹¹ Bottom Hole Location If Different From Surface

UL or lot no. A	Section 24	Township 18S	Range 34E	Lot Idn	Feet from the 130	North/South line NORTH	Feet from the 360	East/West line EAST	County LEA
¹² Dedicated Acres 360		¹³ Joint or Infill		¹⁴ Consolidation Code		¹⁵ Order No.			

No allowable will be assigned to this completion until all interests have been consolidated or a non-standard unit has been approved by the division.



¹⁷ OPERATOR
CERTIFICATION

I hereby certify that the information contained herein is true and complete to the best of my knowledge and belief, and that this organization either owns a working interest or unleased mineral interest in the land including the proposed bottom hole location or has a right to drill this well at this location pursuant to a contract with an owner of such a mineral or working interest, or to a voluntary pooling agreement or a compulsory pooling order heretofore entered by the division.

Signature _____ Date _____

Rachael Overbey
Printed Name

roverbey@fmccl.com
E-mail Address

NAD 83 (SURFACE HOLE LOCATION)
LATITUDE = 32°42'31.35" (32.708710°)
LONGITUDE = -103°30'28.98" (-103.508051°)
NAD 27 (SURFACE HOLE LOCATION)
LATITUDE = 32°42'30.91" (32.708586°)
LONGITUDE = -103°30'27.20" (-103.507557°)
STATE PLANE NAD 83 (N.M. EAST)
N: 622547.90' E: 795181.59'
STATE PLANE NAD 27 (N.M. EAST)
N: 622483.57' E: 754001.87'

NAD 83 (BOTTOM HOLE LOCATION)
LATITUDE = 32°44'24.88" (32.740244°)
LONGITUDE = -103°30'23.25" (-103.506457°)
NAD 27 (BOTTOM HOLE LOCATION)
LATITUDE = 32°44'24.43" (32.740120°)
LONGITUDE = -103°30'21.46" (-103.505962°)
STATE PLANE NAD 83 (N.M. EAST)
N: 634024.72' E: 795582.30'
STATE PLANE NAD 27 (N.M. EAST)
N: 633960.01' E: 754402.90'

¹⁸ SURVEYOR
CERTIFICATION

I hereby certify that the well location shown on this plat was plotted from field notes of actual surveys made by me or under my supervision, and that the same is true and correct to the best of my belief.

October 05, 2023

Date of Survey
Signature and Seal of Professional Surveyor:



Certificate Number:

District I
1625 N. French Dr., Hobbs, NM 88240
Phone: (575) 393-6161 Fax: (575) 393-0720
District II
811 S. First St., Artesia, NM 88210
Phone: (575) 748-1283 Fax: (575) 748-9720
District III
1000 Rio Brazos Road, Aztec, NM 87410
Phone: (505) 334-6178 Fax: (505) 334-6170
District IV
1220 S. St. Francis Dr., Santa Fe, NM 87505
Phone: (505) 476-3460 Fax: (505) 476-3462

State of New Mexico
Energy, Minerals & Natural Resources Department
OIL CONSERVATION DIVISION
1220 South St. Francis Dr.
Santa Fe, NM 87505

Form C-102
Revised August 1, 2011
Submit one copy to appropriate
District Office

☐ AMENDED REPORT

WELL LOCATION AND ACREAGE DEDICATION PLAT

¹ API Number		² Pool Code	³ Pool Name
⁴ Property Code	⁵ Property Name SATELLITE STATE COM		⁶ Well Number 804H
⁷ OGRID No. 331595	⁸ Operator Name FRANKLIN MOUNTAIN ENERGY 3, LLC		⁹ Elevation 3957.9

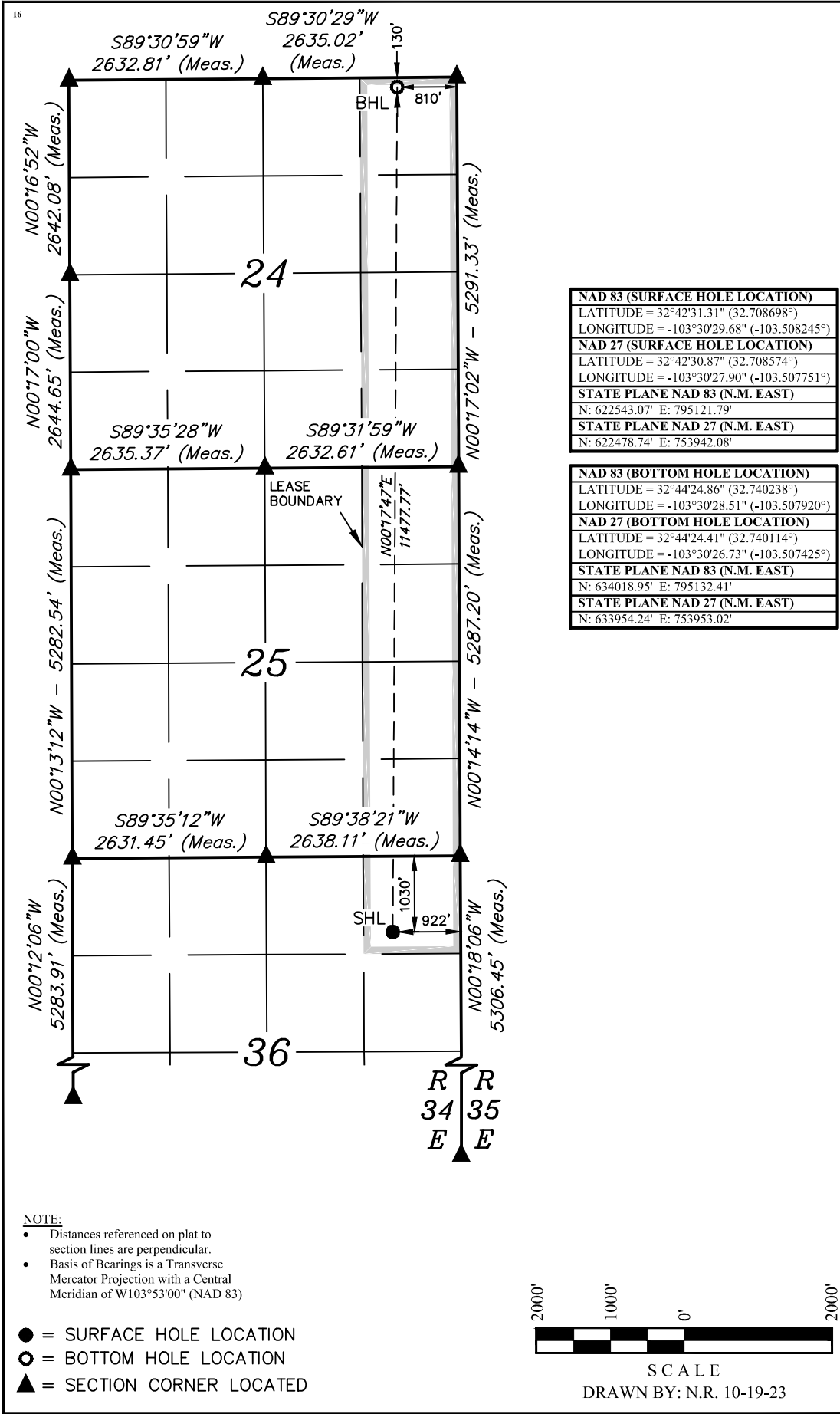
¹⁰ Surface Location

UL or lot no. A	Section 36	Township 18S	Range 34E	Lot Idn	Feet from the 1030	North/South line NORTH	Feet from the 922	East/West line EAST	County LEA
--------------------	---------------	-----------------	--------------	---------	-----------------------	---------------------------	----------------------	------------------------	---------------

¹¹ Bottom Hole Location If Different From Surface

UL or lot no. A	Section 24	Township 18S	Range 34E	Lot Idn	Feet from the 130	North/South line NORTH	Feet from the 810	East/West line EAST	County LEA
¹² Dedicated Acres 360		¹³ Joint or Infill		¹⁴ Consolidation Code		¹⁵ Order No.			

No allowable will be assigned to this completion until all interests have been consolidated or a non-standard unit has been approved by the division.



¹⁷ OPERATOR
CERTIFICATION

I hereby certify that the information contained herein is true and complete to the best of my knowledge and belief, and that this organization either owns a working interest or unleased mineral interest in the land including the proposed bottom hole location or has a right to drill this well at this location pursuant to a contract with an owner of such a mineral or working interest, or to a voluntary pooling agreement or a compulsory pooling order heretofore entered by the division.

Signature _____ Date _____

Rachael Overbey
Printed Name

roverbey@fmccl.com
E-mail Address

NAD 83 (SURFACE HOLE LOCATION)
LATITUDE = 32°42'31.31" (32.708698°)
LONGITUDE = -103°30'29.68" (-103.508245°)
NAD 27 (SURFACE HOLE LOCATION)
LATITUDE = 32°42'30.87" (32.708574°)
LONGITUDE = -103°30'27.90" (-103.507751°)
STATE PLANE NAD 83 (N.M. EAST)
N: 622543.07' E: 795121.79'
STATE PLANE NAD 27 (N.M. EAST)
N: 622478.74' E: 753942.08'

NAD 83 (BOTTOM HOLE LOCATION)
LATITUDE = 32°44'24.86" (32.740238°)
LONGITUDE = -103°30'28.51" (-103.507920°)
NAD 27 (BOTTOM HOLE LOCATION)
LATITUDE = 32°44'24.41" (32.740114°)
LONGITUDE = -103°30'26.73" (-103.507425°)
STATE PLANE NAD 83 (N.M. EAST)
N: 634018.95' E: 795132.41'
STATE PLANE NAD 27 (N.M. EAST)
N: 633954.24' E: 753953.02'

¹⁸ SURVEYOR
CERTIFICATION

I hereby certify that the well location shown on this plat was plotted from field notes of actual surveys made by me or under my supervision, and that the same is true and correct to the best of my belief.

October 05, 2023

Date of Survey
Signature and Seal of Professional Surveyor:



Certificate Number: