

Case No.

4262

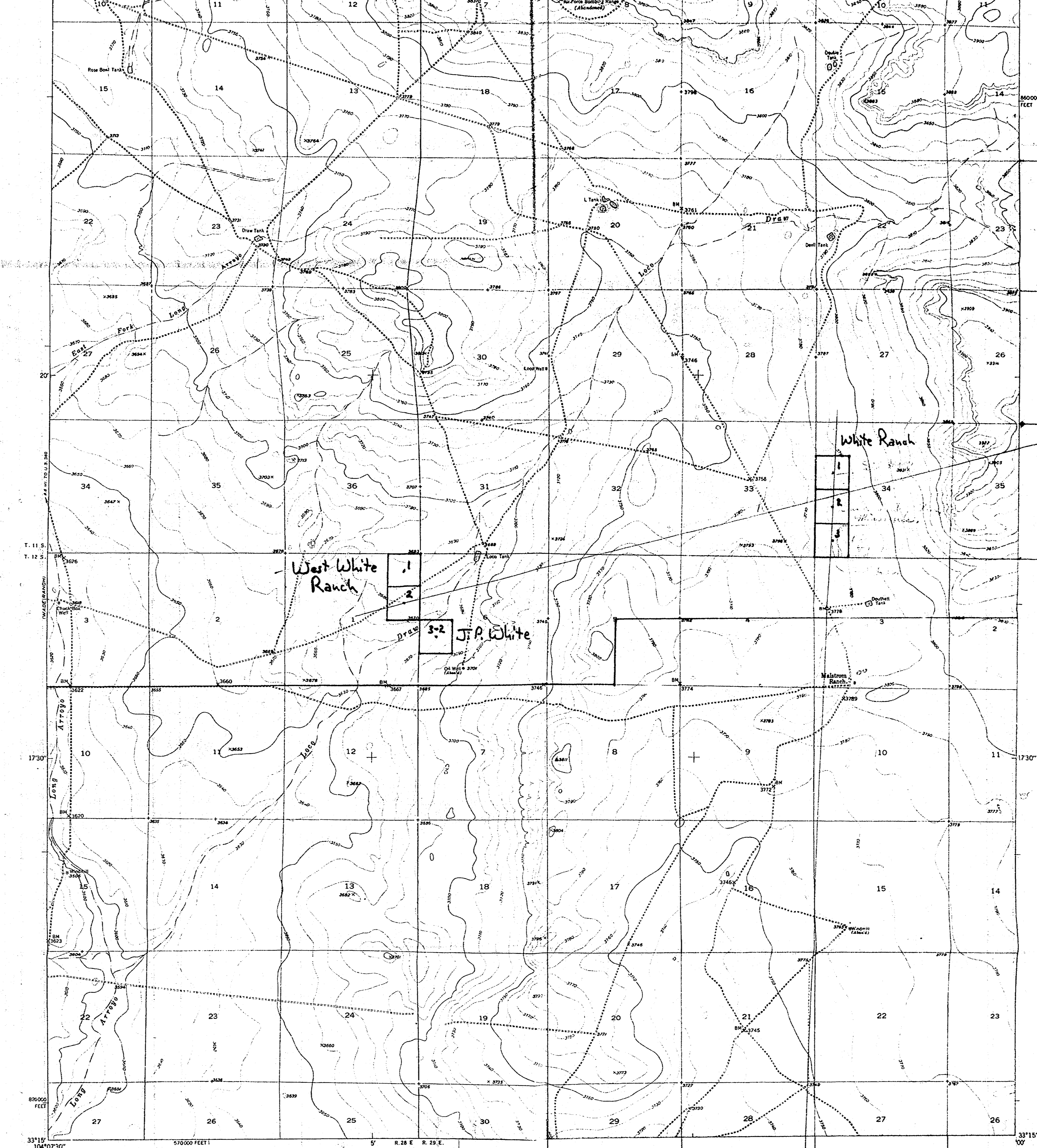
Large Exhibits

V.M.C.F. MICROFILMS

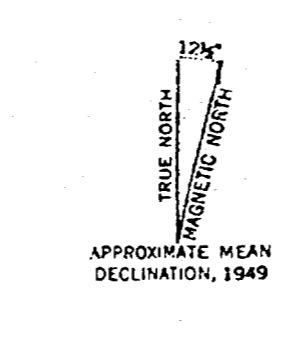


BEST AVAILABLE COPY

UNITED STATES DEPARTMENT OF THE INTERIOR GEOLOGICAL SURVEY
 UNITED STATES DEPARTMENT OF THE ARMY CORPS OF ENGINEERS
 MALSTROM RANCH QUADRANGLE NEW MEXICO-CHAVES CO. 7.5 MINUTE SERIES (TOPOGRAPHIC)



Mapped, edited, and published by the Geological Survey
 Control by USGS and USACE
 Culture and drainage in part compiled from
 aerial photographs taken December 1946
 Topography by aneroid method, 1949
 Photographic projection, 1927 North American datum
 1:50,000 feet and based on New Mexico coordinate system,
 east zone

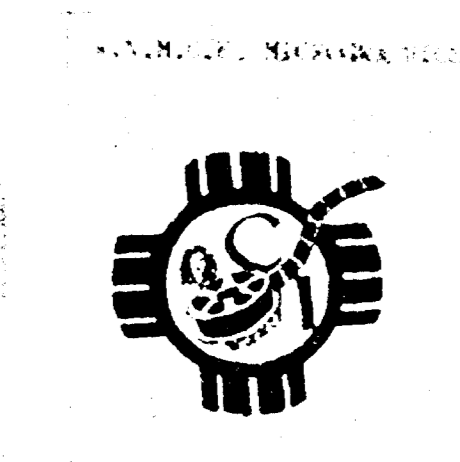
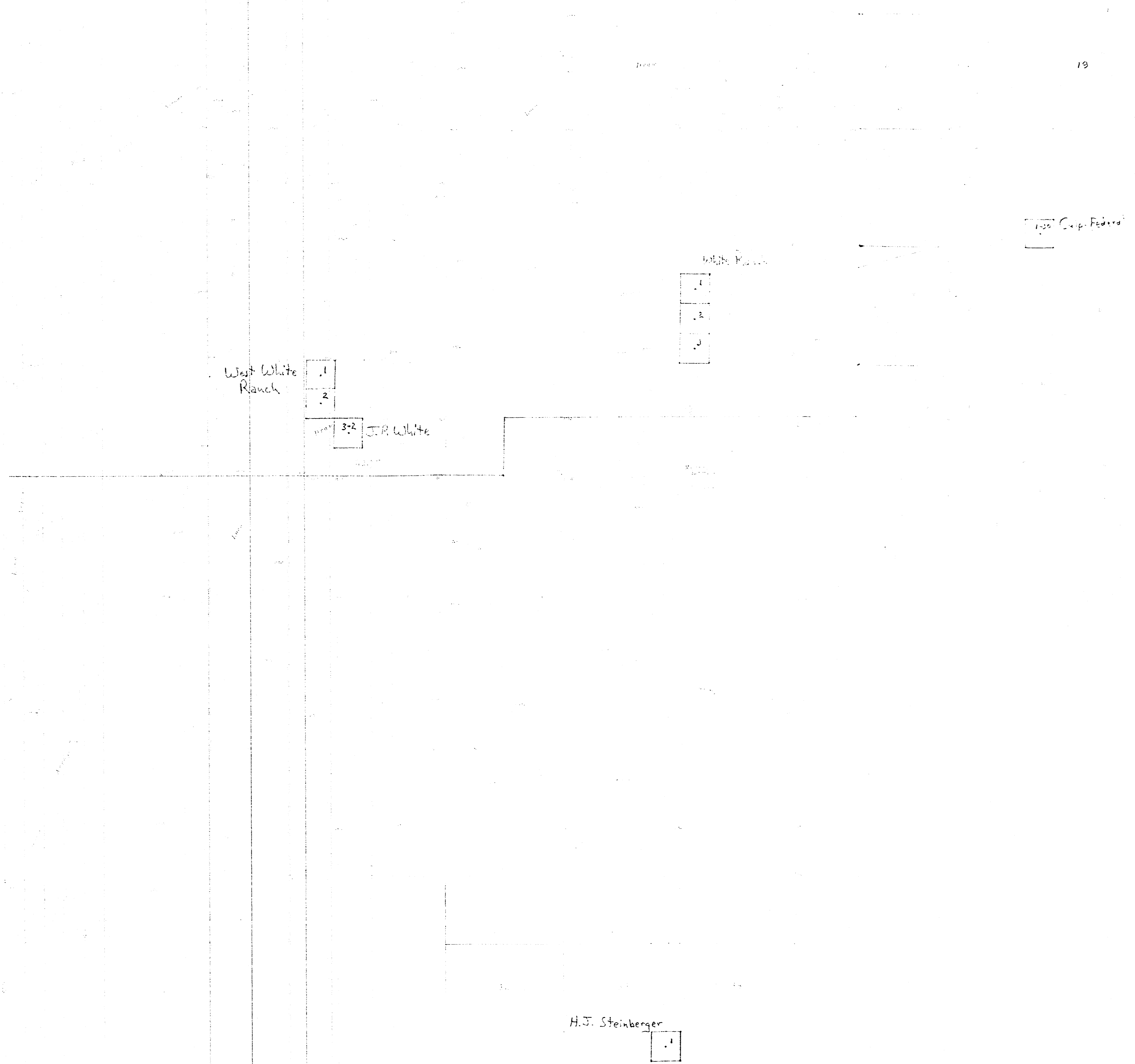


FOR SALE BY U.S.

R 30 E		
24	19	20
25	30	<i>Culp-Federal</i>
	<i>130 Culp-Federal</i>	
36	31	32

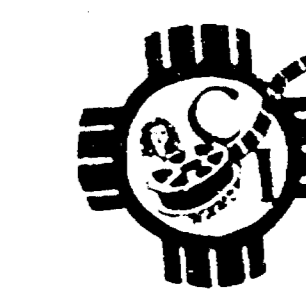
32	33	34
	<i>H.J. Steinberger</i>	





NOT AVAILABLE 1951

VALUABLE INFORMATION



BEST AVAILABLE COPY