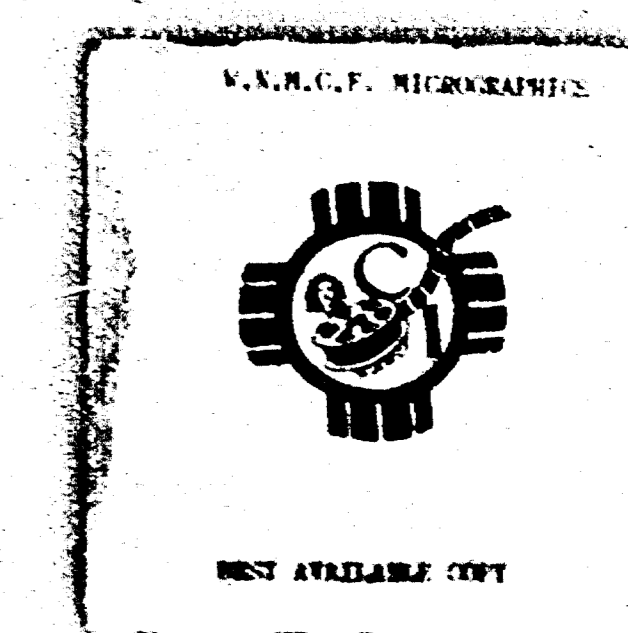
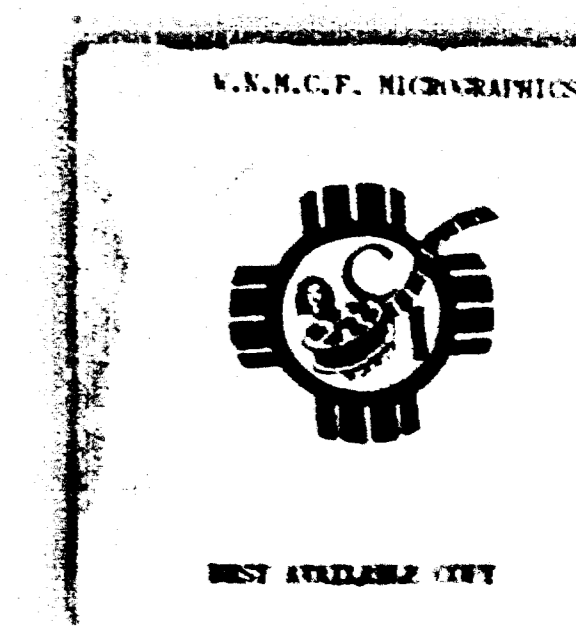
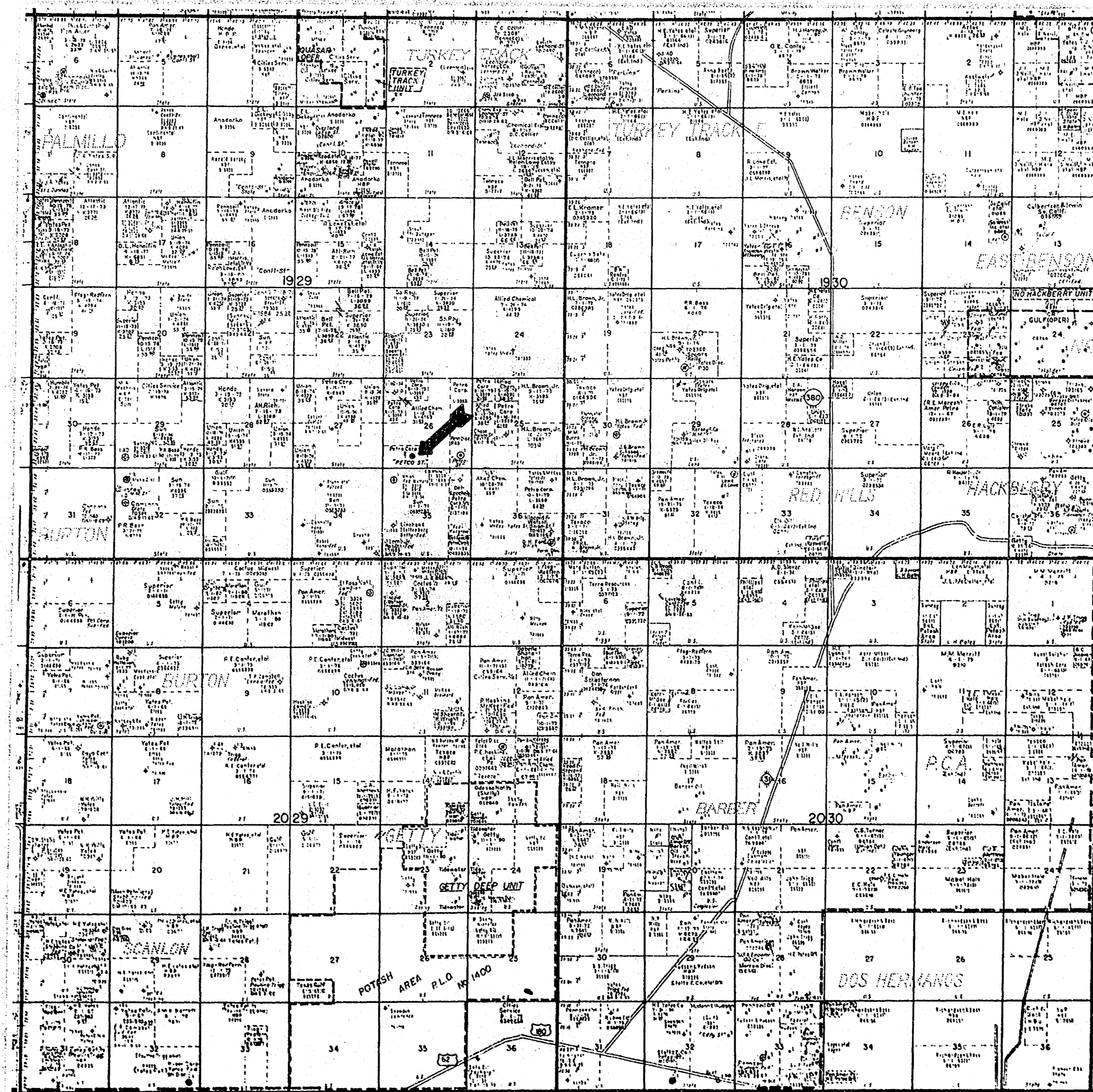


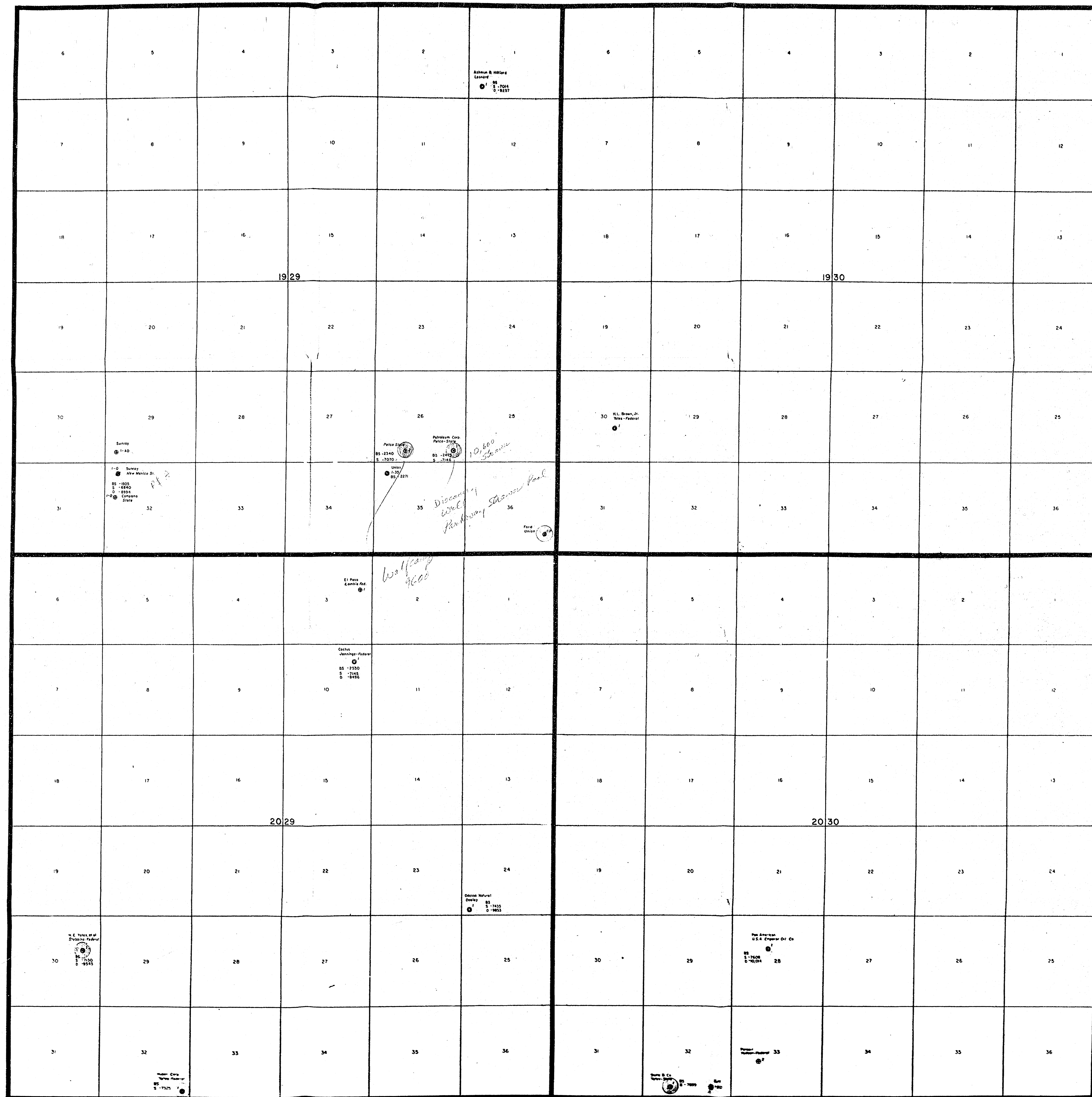
Case No.

4577

Large Exhibits



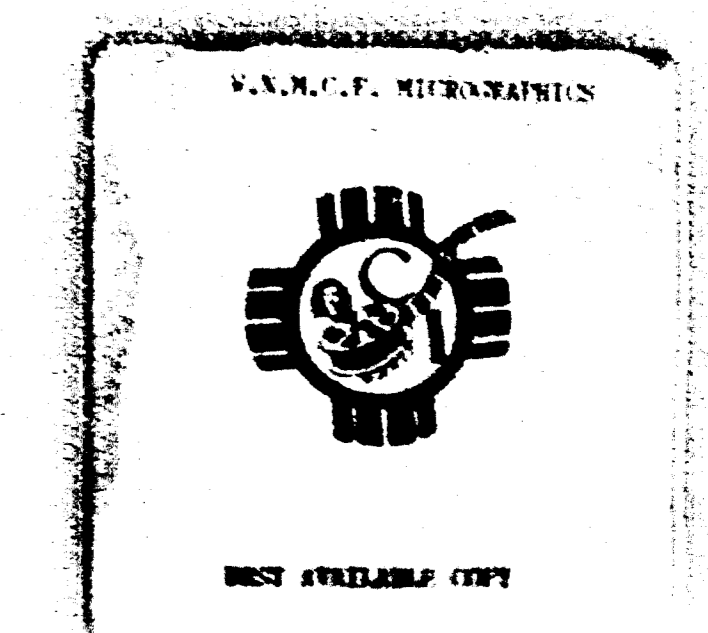


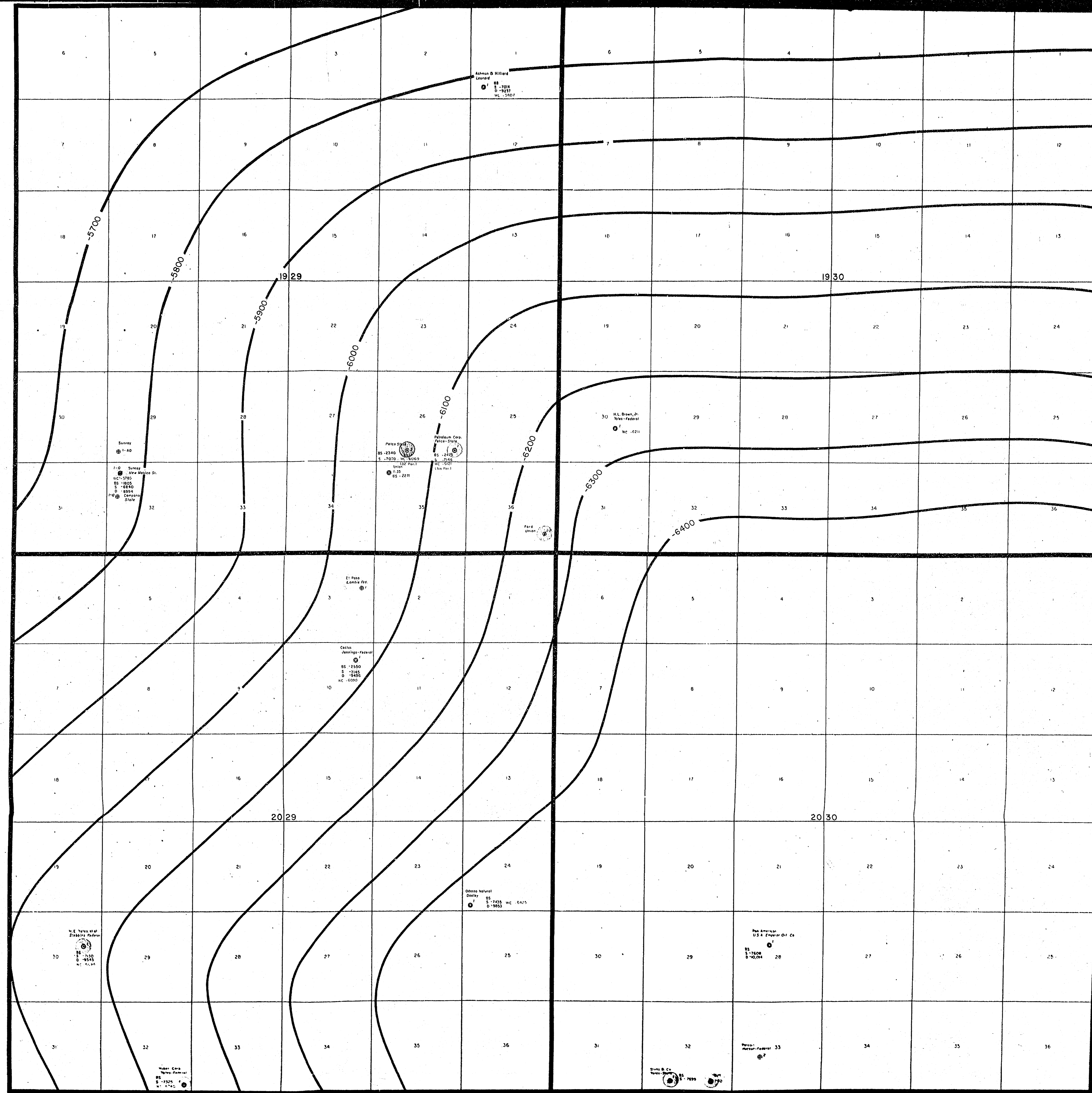


LEGEND

STRAWN	_____
MORROW	_____
WOLFCAMP	_____
YATES	_____
DELAWARE	_____

PARKWAY FIELD AREA
EDDY COUNTY, NEW MEXICO
 SCALE: 1" = 2,000'



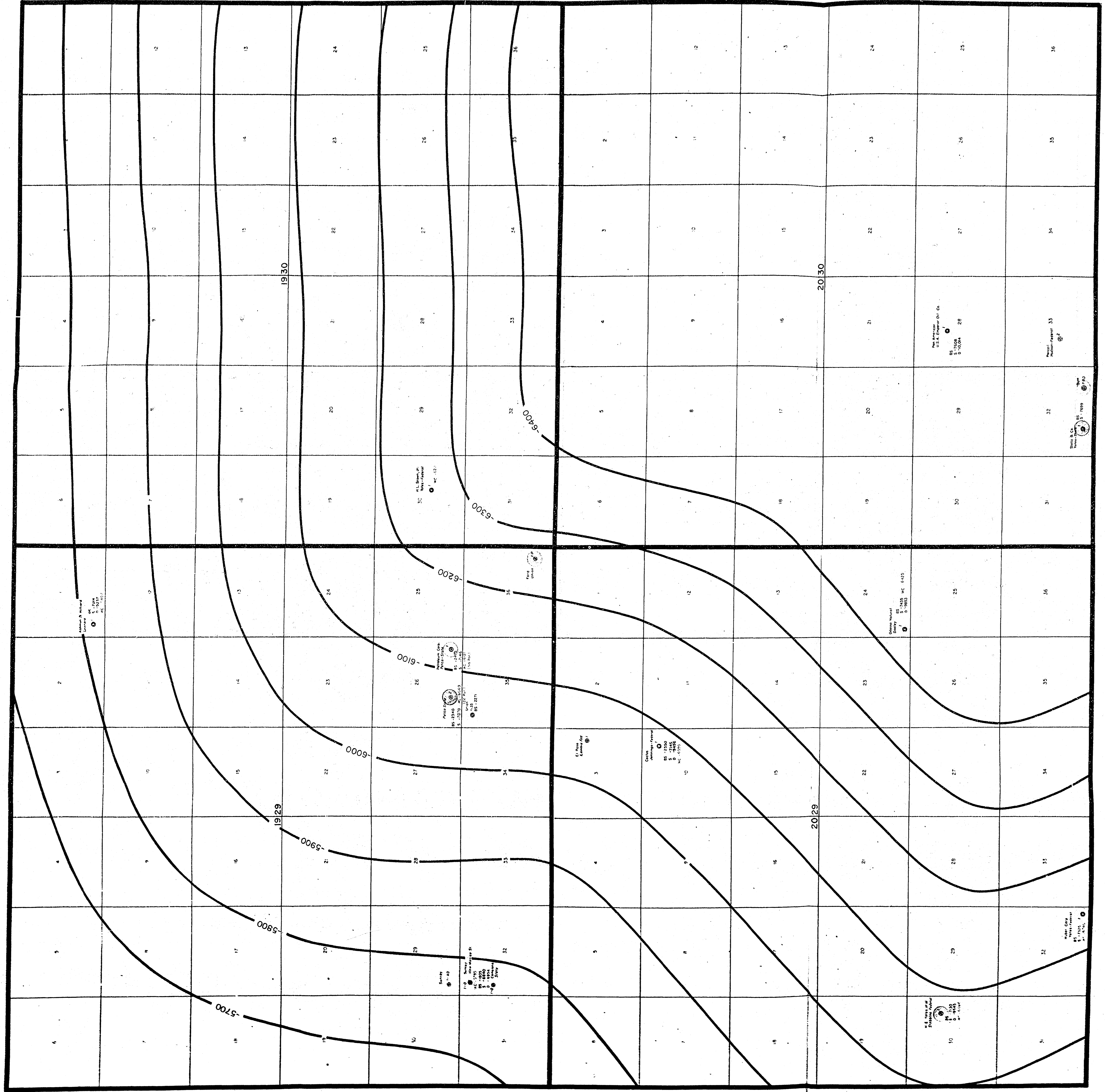


THE PETROLEUM CORPORATION

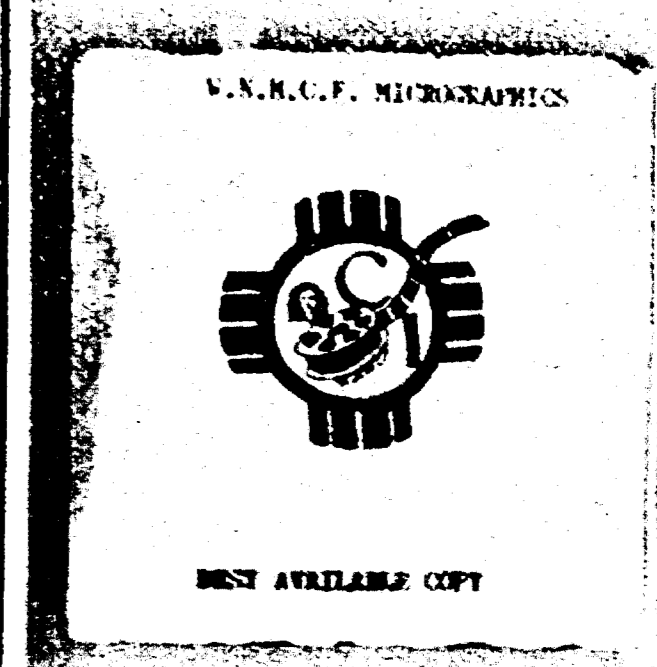
PARKWAY FIELD AREA
 EDDY COUNTY, NEW MEXICO
 STRUCTURE MAP

CONTOURS: WOLFCAMP
 CONTOUR INTERVAL: 100' SCALE: 1" = 2000'



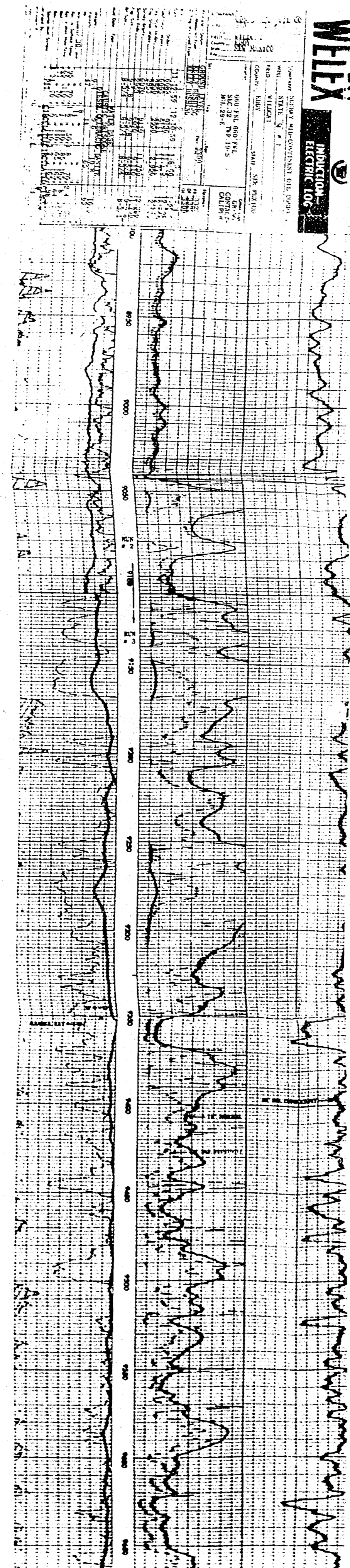


THE PETROLEUM CORPORATION
 PARKWAY FIELD AREA
 EDDY COUNTY, NEW MEXICO
 STRUCTURE MAP
 CONTOURS: WOLFCAMP
 CONTOUR INTERVAL: 100' SCALE: 1" = 2000'



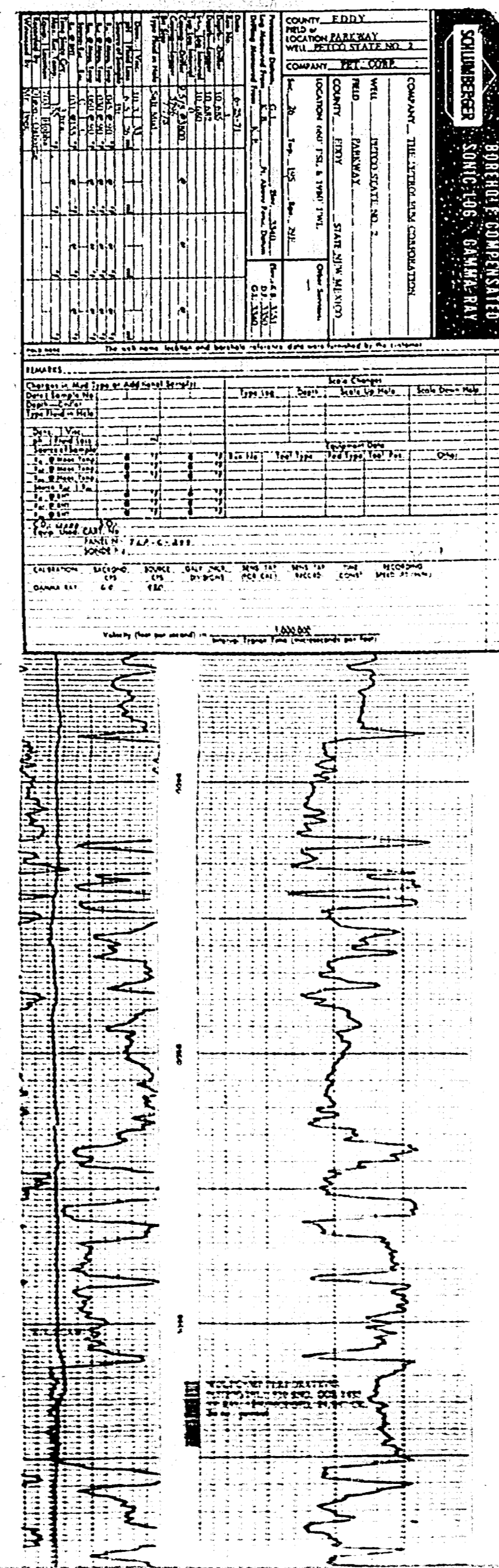
"A"

Sunray Mid-Continent
State "Q" No. 1



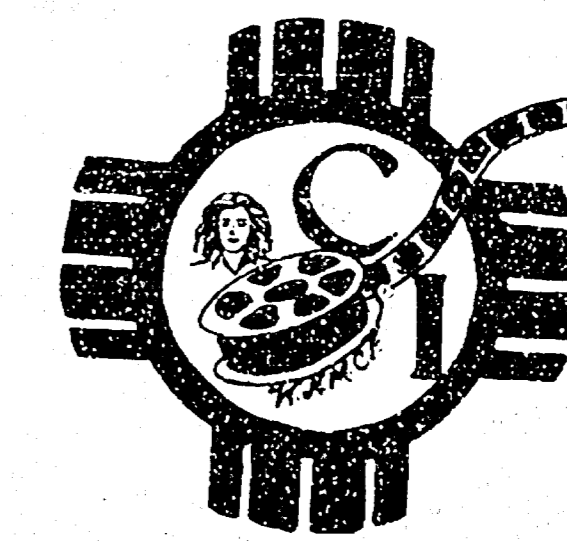
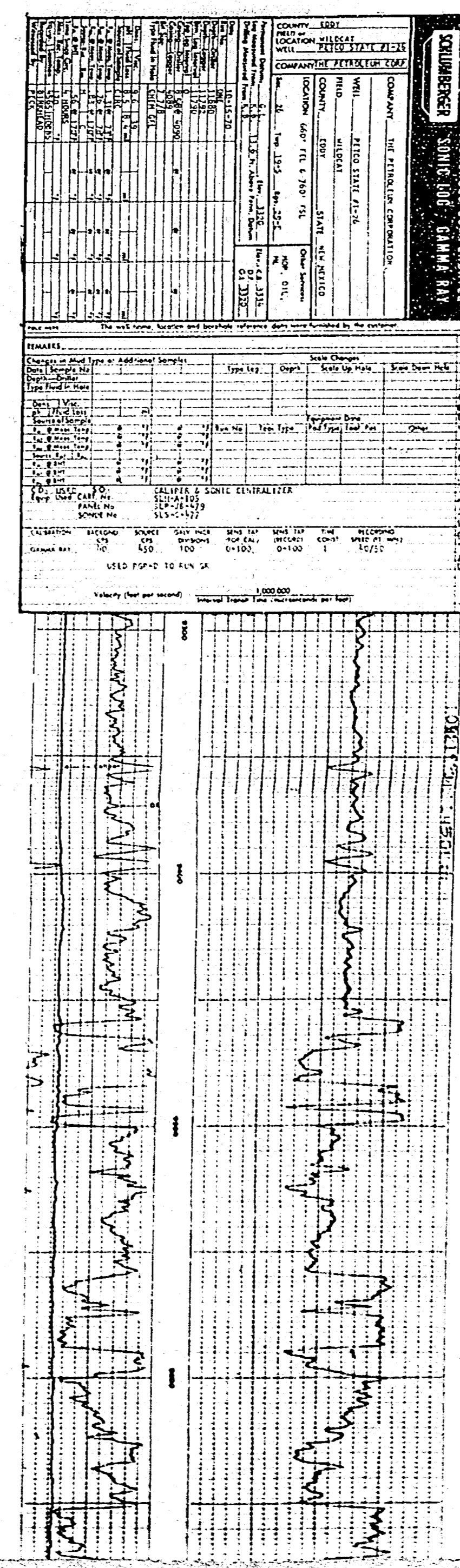
"B"

The Petroleum Corp.
Petco State No. 2

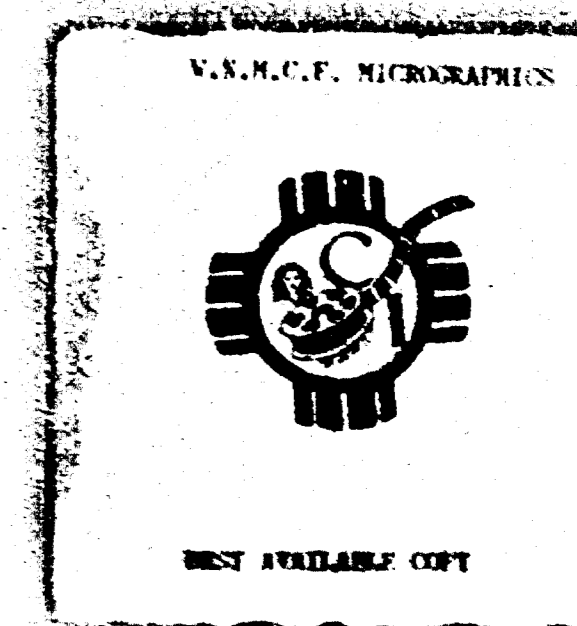


"C"

The Petroleum Corp.
Petco State No. 1

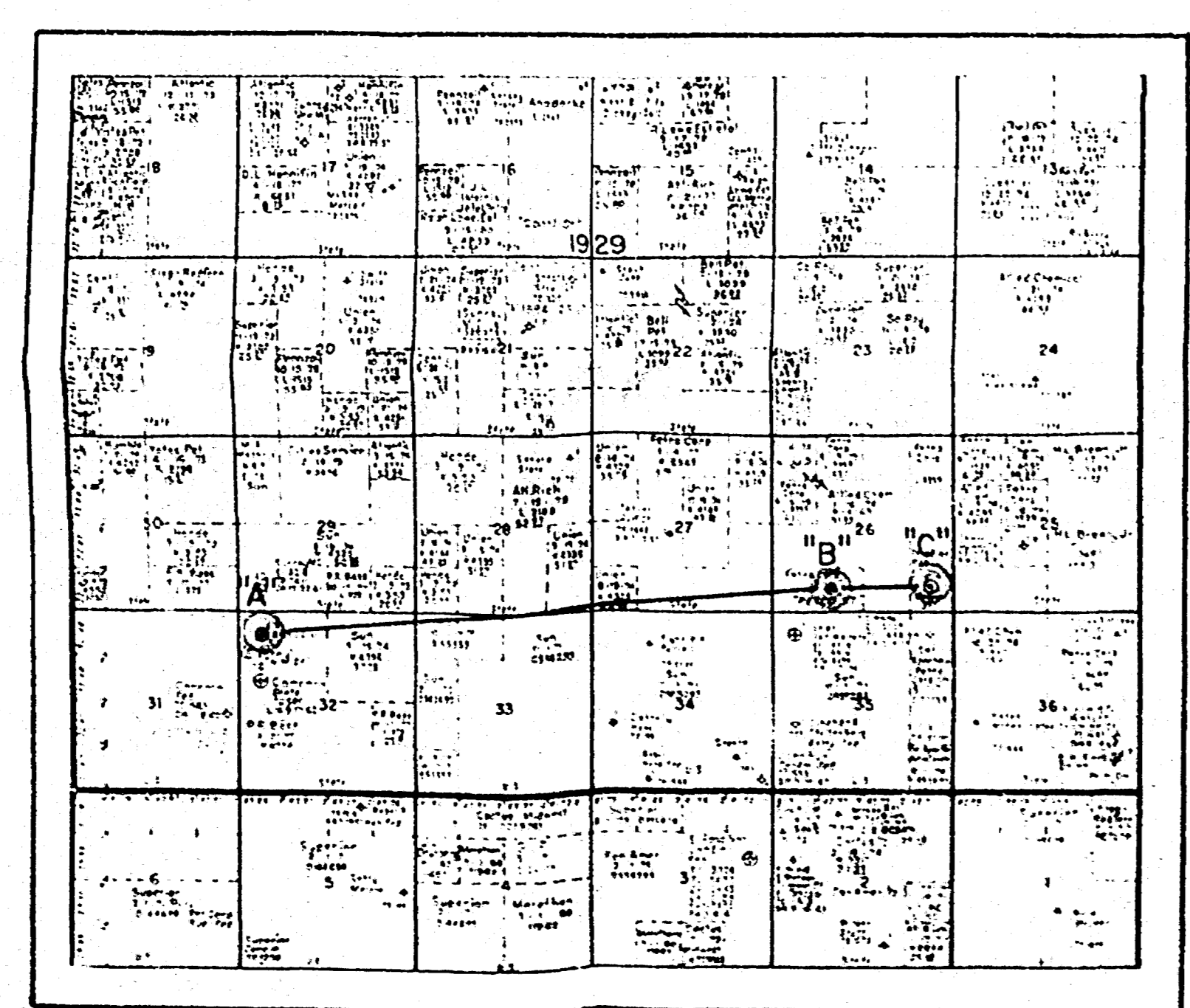
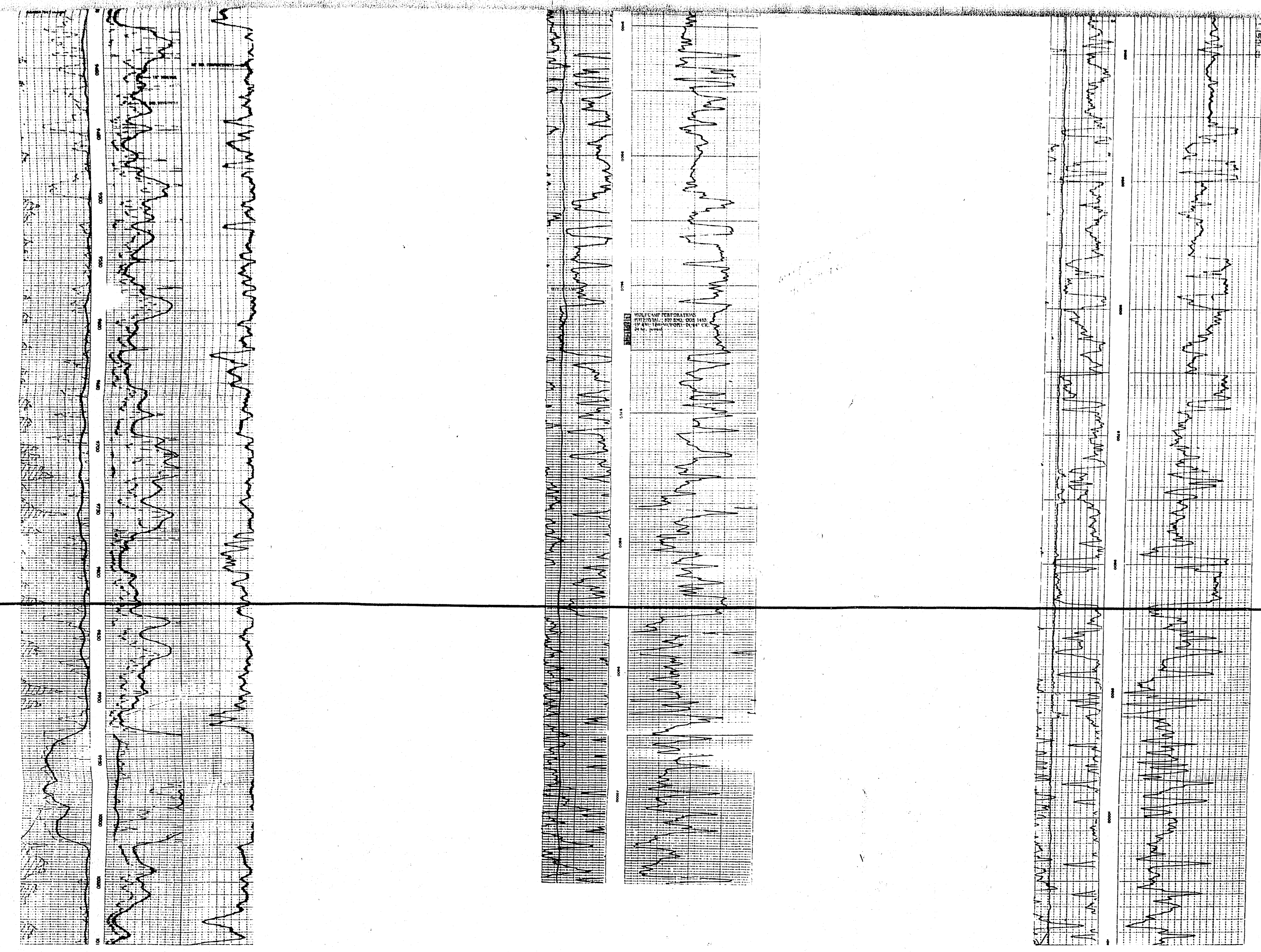


Water Damaged Documents
 Document Number: 4577
 Page Number: 36
 Date: 1-5-88
 Location: Jyda Base



-6500

-6500



THE PETROLEUM CORPORATION

PARKWAY FIELD AREA
 EDDY COUNTY, NEW MEXICO
 CROSS SECTION

BEFORE EXAMINER
 OR COMMISSIONER
 OF OIL AND GAS



Water Damaged Documents
 #4577
 34-302
 588
 1958

