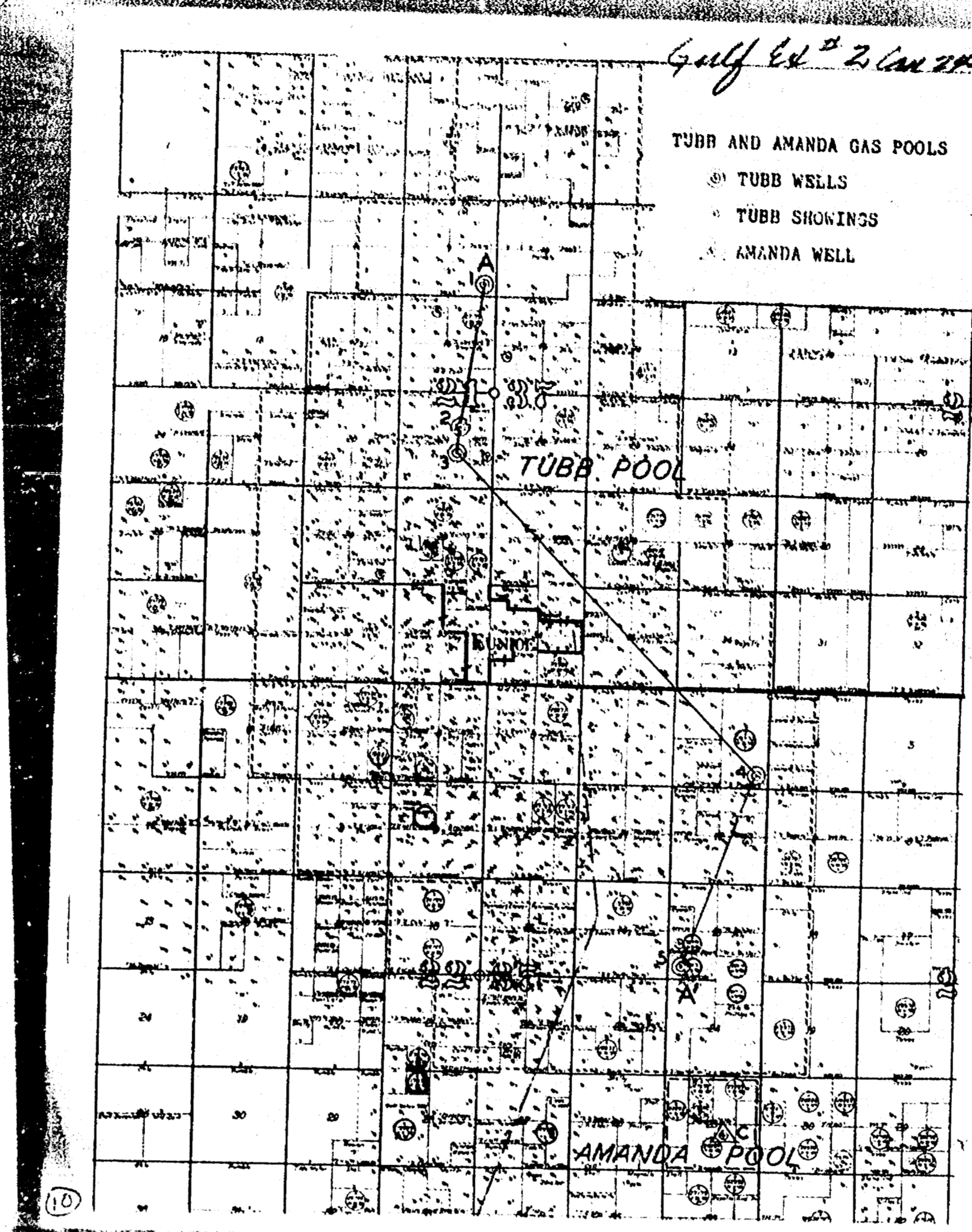
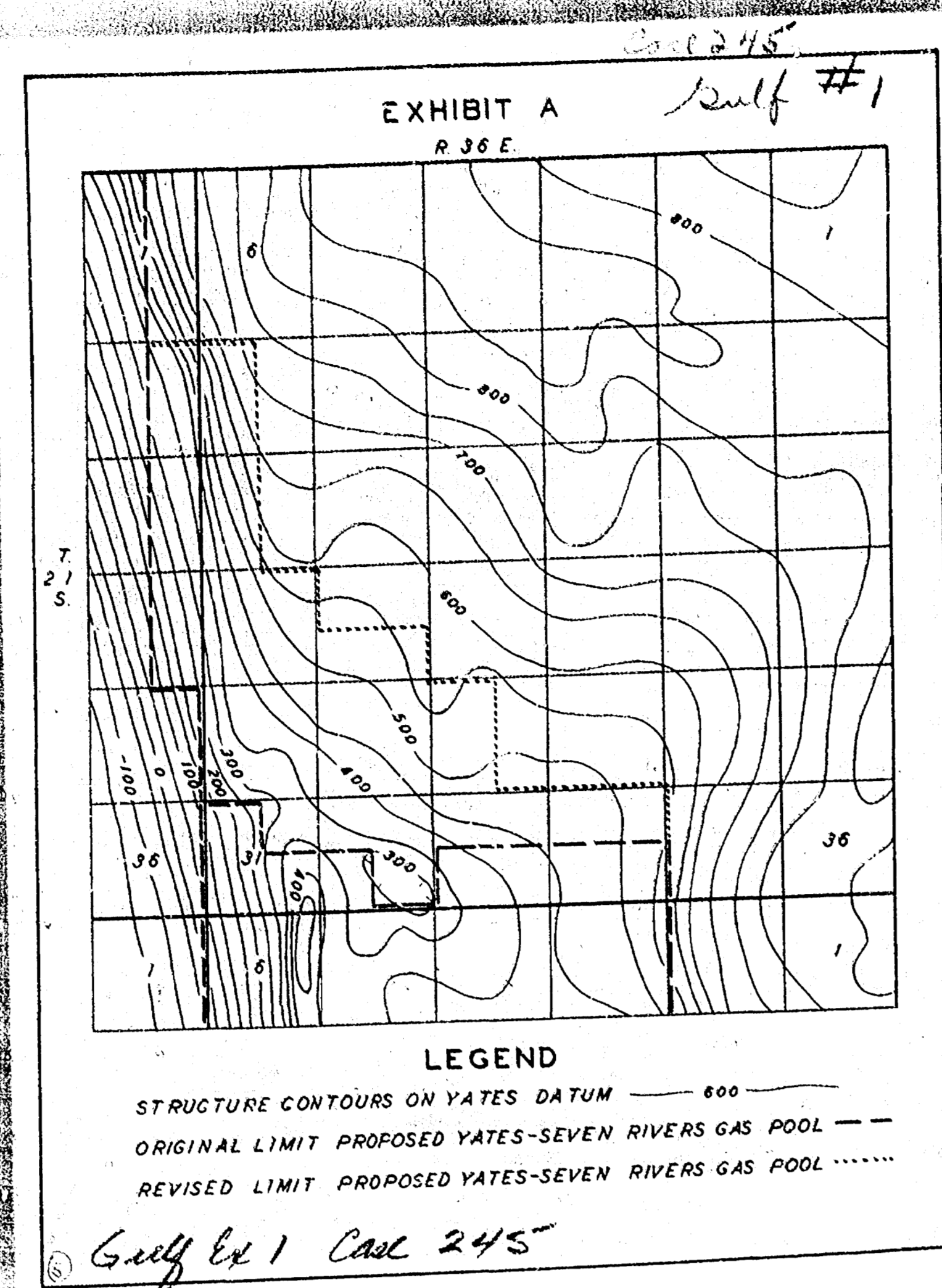


Case No.

245

Large Exhibits



Gulf Ex 4 Case 245

TABLE I - WELLS PRODUCING FROM TUBB

Well and Location	Top Tubb	Producing Interval	Interval Referred to Tubb Datum	IPP / MCF
Continental No. B-3 Hawk #7 Sec. 9-218-37E	6200	6200 to 6290*	0' to -90'	12,000
Trinity No. 1 Weatherly Sec. 21-218-37E	6095	6116 to 6185*	-18' to -95'	6,000 & 36 bbl. distl.
Continental No. 3-3 Wanta Sec. 21-218-37E	6100	6120 to 6190	-20' to -90'	5,730
Gulf No. 3 Padlock Sec. 1-228-37E	6130	6150 to 6190 6210 to 6250	-20' to -120'	1,451 & 32 bbl. distl.
Gulf No. 1 Danglede Sec. 13-228-37E	6030	6120 to 6160	-110' to -130'	975

* Entire interval not perforated.

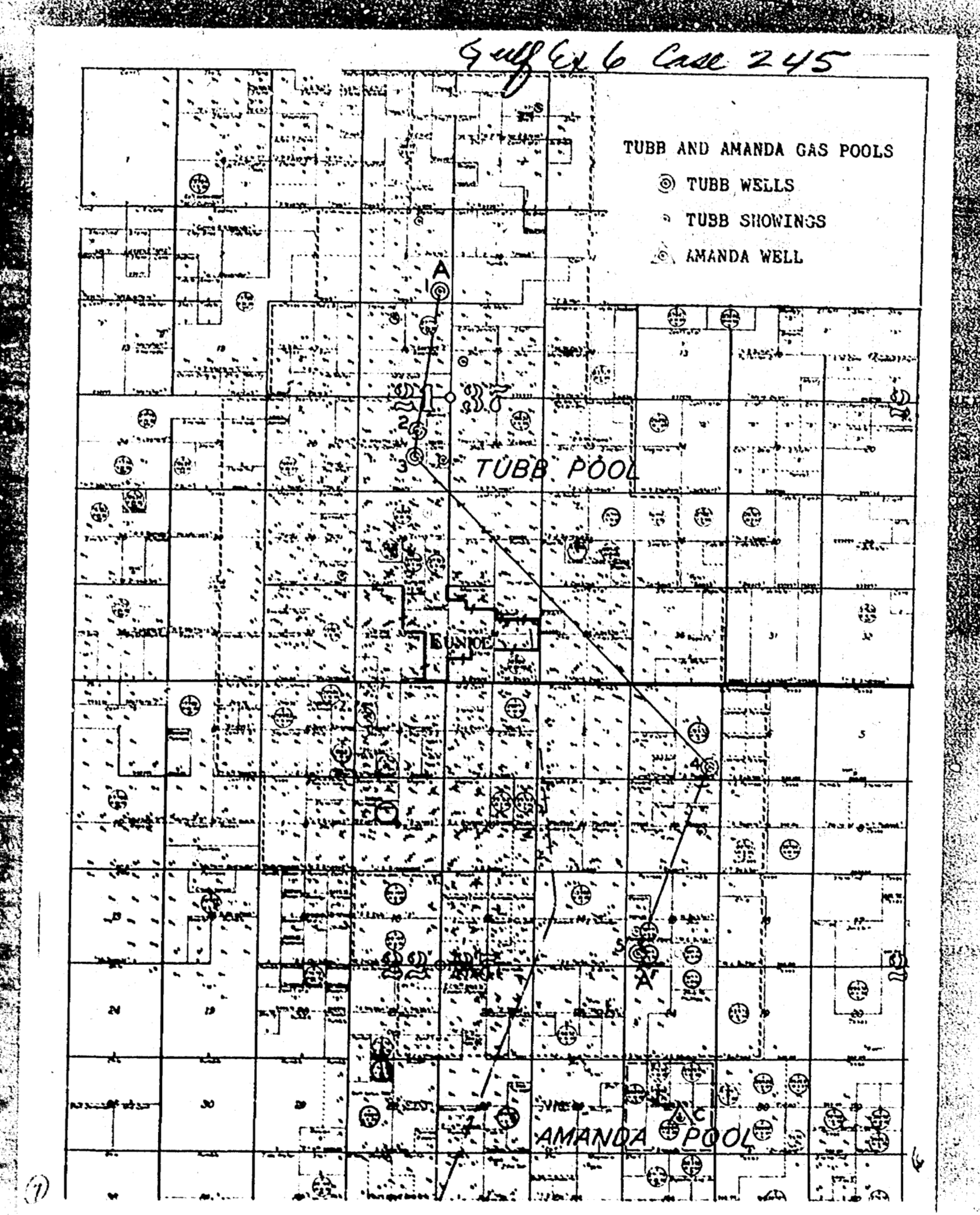
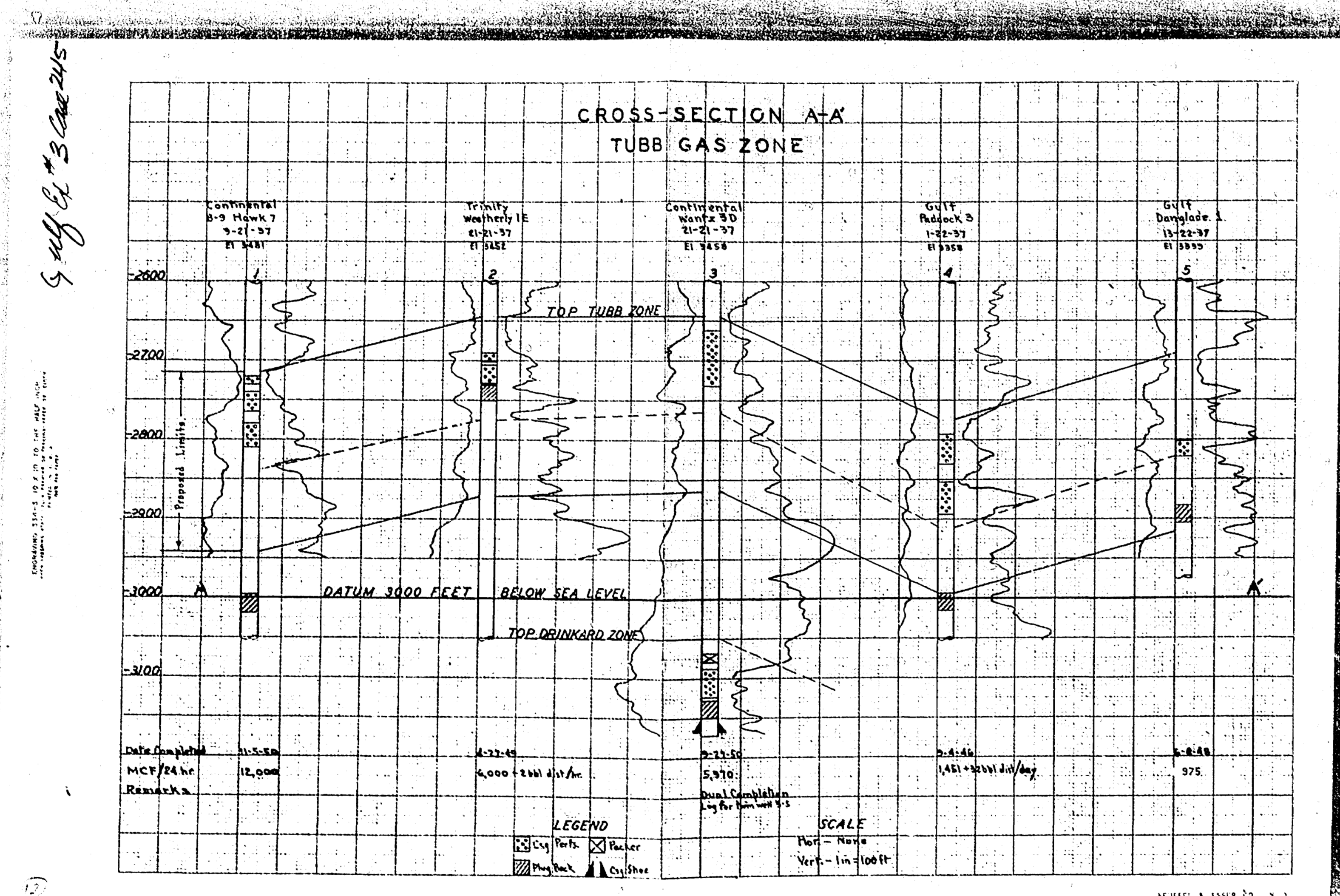
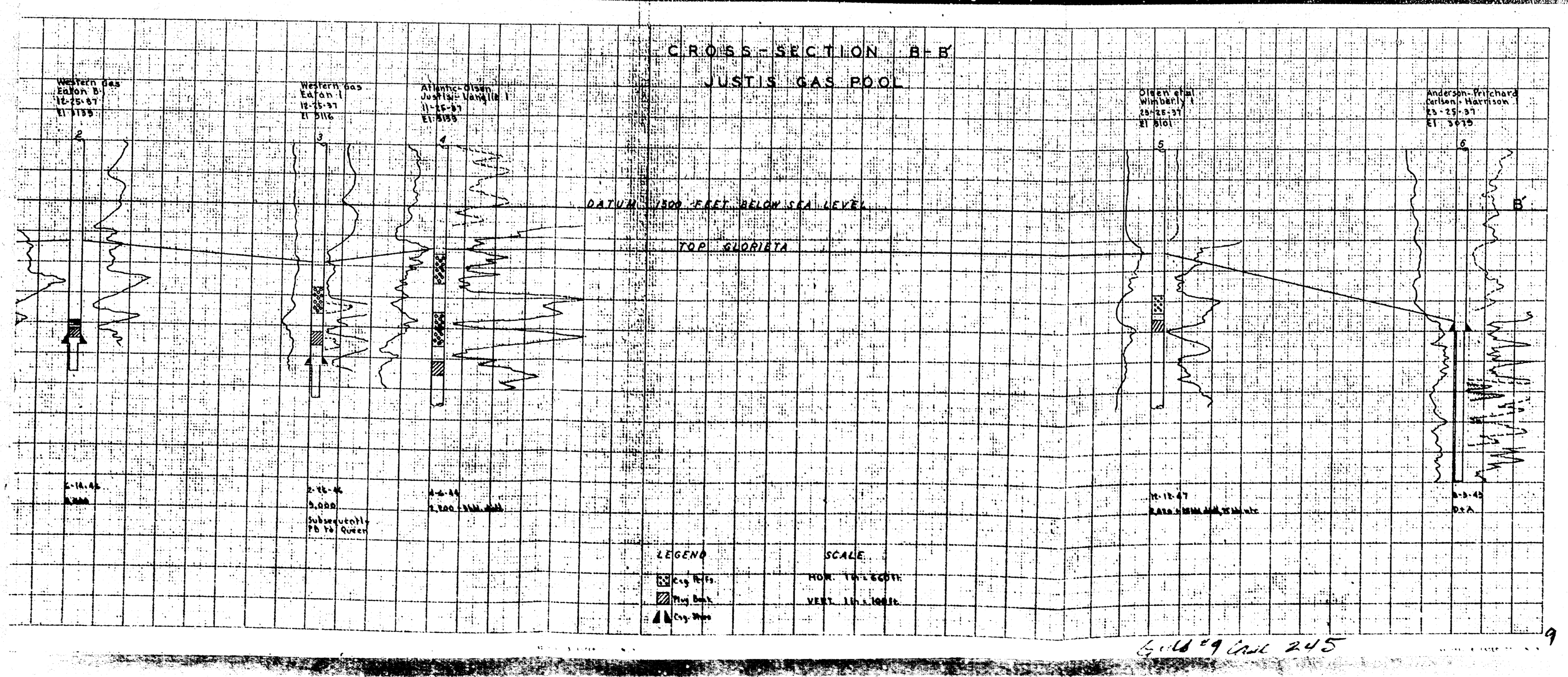
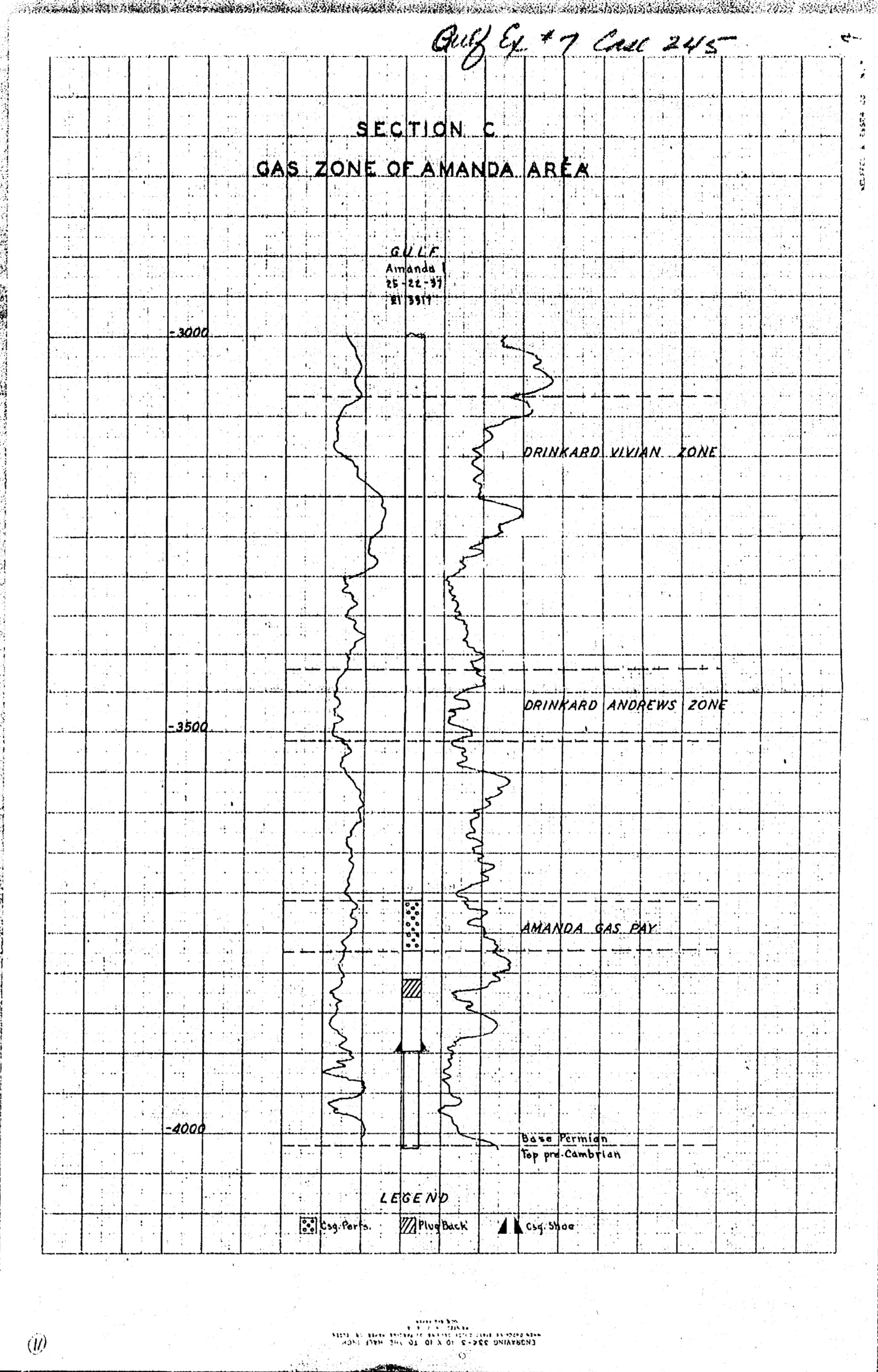
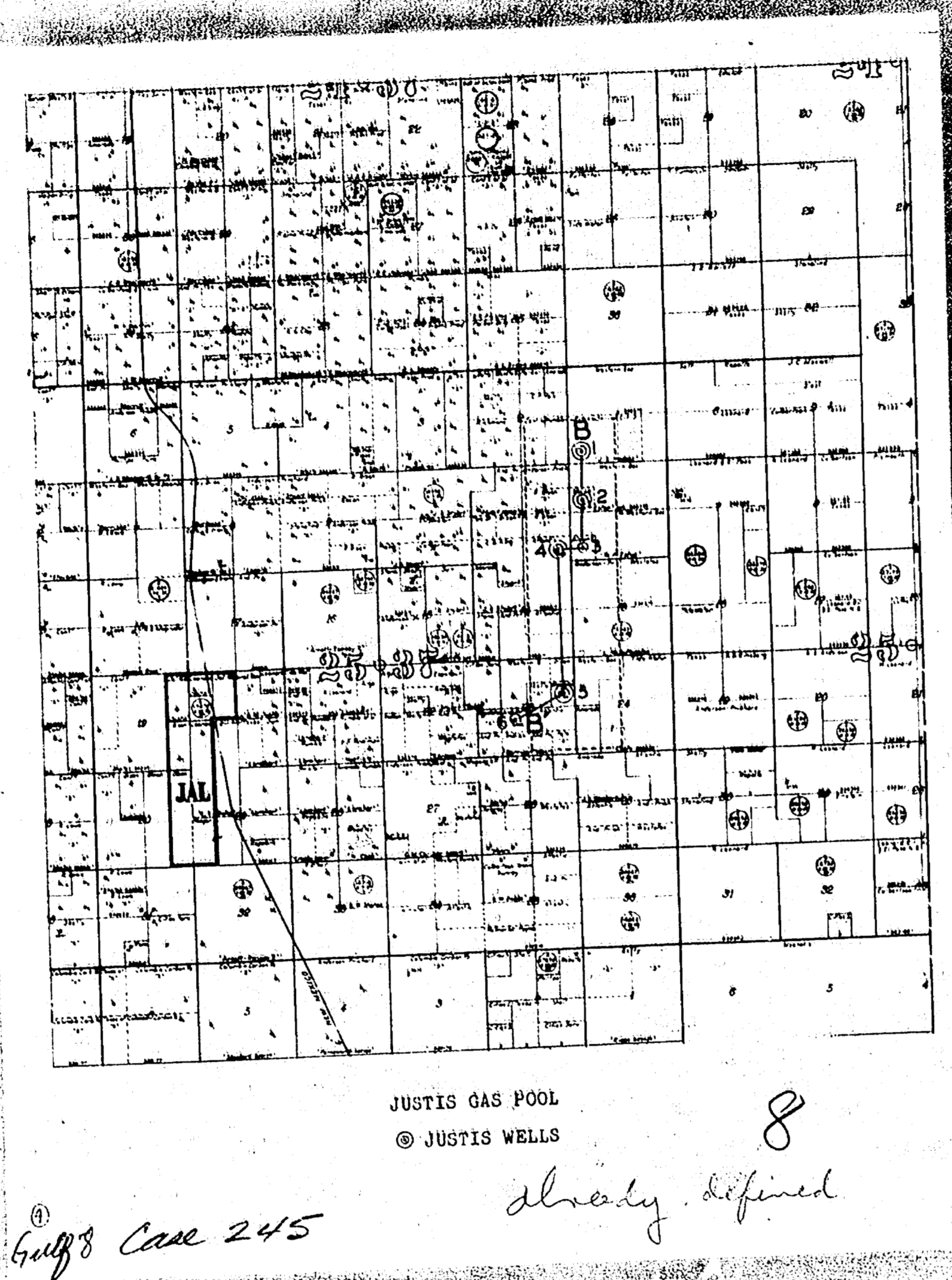


TABLE II - TUBB GAS SHOWING, OTHER WELLS

Well and Location	Top Tubb	Interval Tested	Interval Referred to Tubb Datum	Results
Continental No. B-3 Hawk No. 4 Sec. 3-218-37E	6350	6300-6450	+50' to -100'	45 MCF
Stanford No. 2 Southern Royalties, Sec. 9-218-37E	6200	6235-6337	-35' to -137'	6,000 MCF
Shell No. 2 Argo Sec. 15-218-37E	6140	6228-6333	-88' to -193'	459 MCF
Stanford No. 6 State C Sec. 16-218-37E	6177	6150-6300	+27' to -123'	5,000 MCF
Cone No. 2 Anderson Sec. 21-218-37E	6140	6032-6242	+108' to -102'	3,000 MCF est.
Stanford No. 3 Turner Sec. 29-218-37E	6115	6135-6185 6186-6318	0' to -70' -69' to -203'	110 MCF 245 MCF
Fernox No. 9 Stanton Sec. 12-228-37E	6080	6130-6200	-50' to -120'	350 MCF
Olsen No. 1 Danglede Sec. 13-228-37E	6030	6050-6160	-20' to -130'	250 MCF

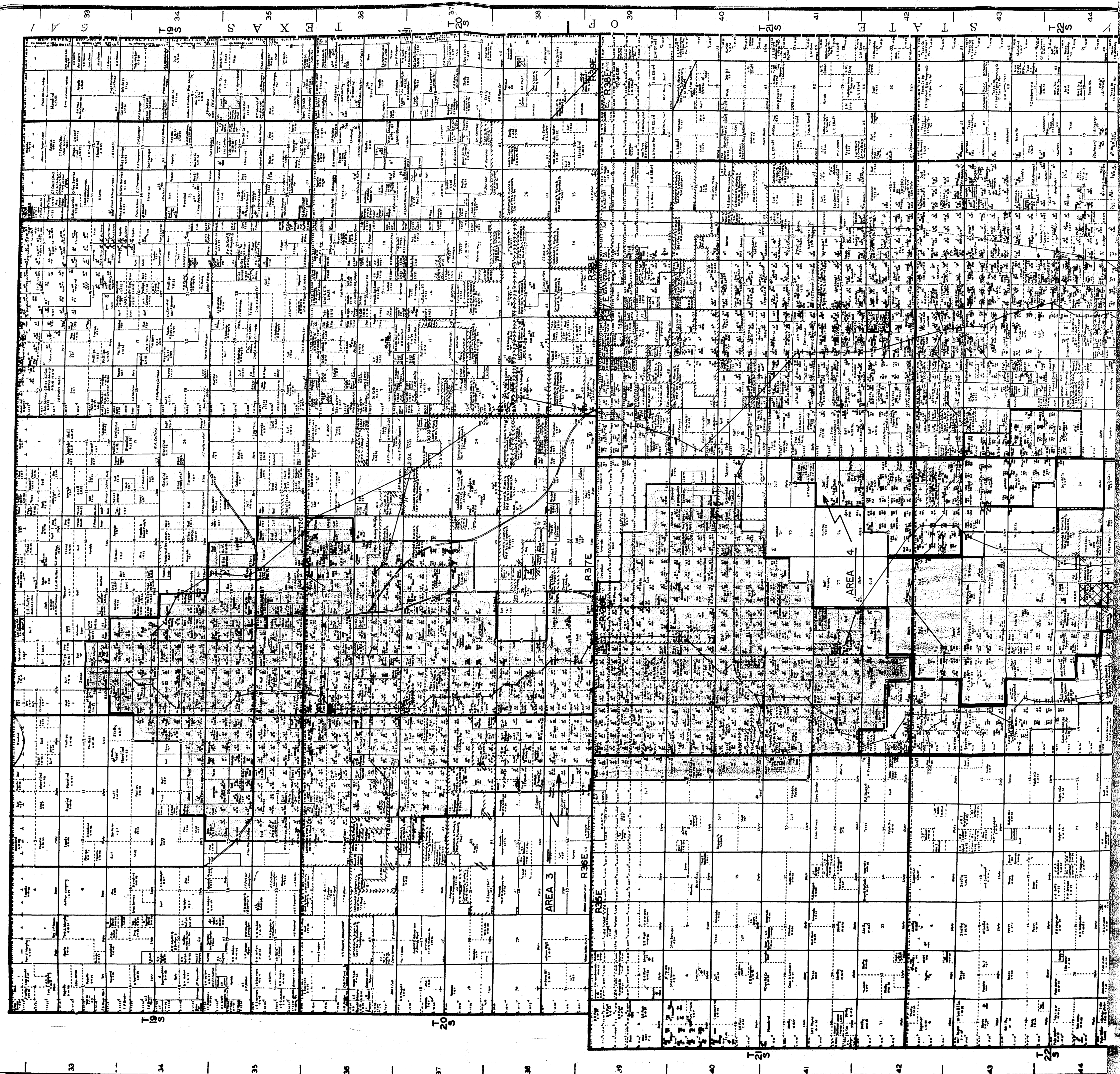


RECOMMENDED GAS POOL BOUNDARIES
 SOUTHEAST LEA COUNTY, NEW MEXICO

CONTINENTAL OIL COMPANY
PRODUCTION DEPARTMENT

DATE: 11-1-50
 DRAWN BY: J. W. [unclear]
 CHECKED BY: [unclear]

BASE MAP OBTAINED FROM
 ZINGERY MAPPING CO.



20

