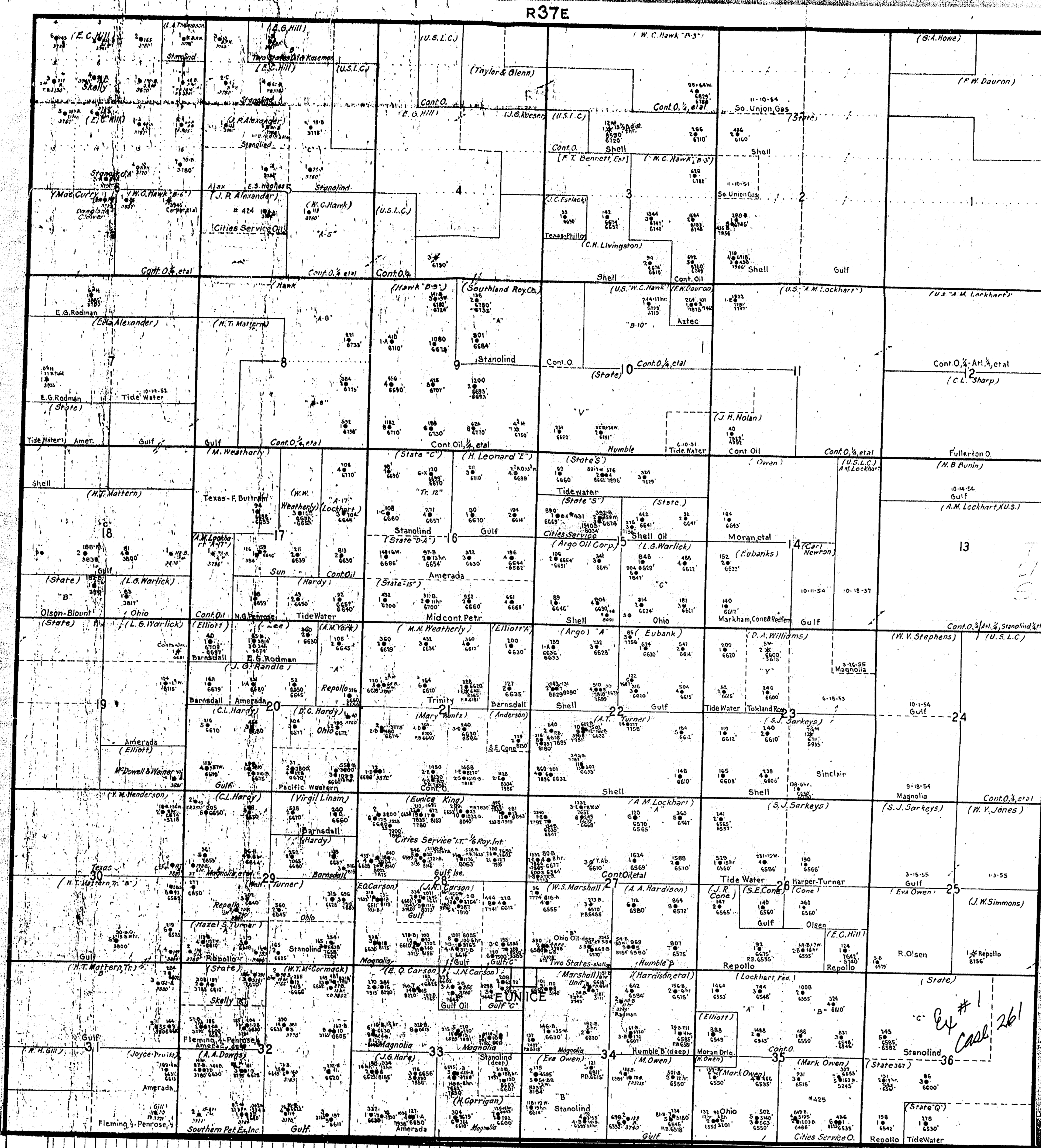


# Case No.

261

## Large Exhibits



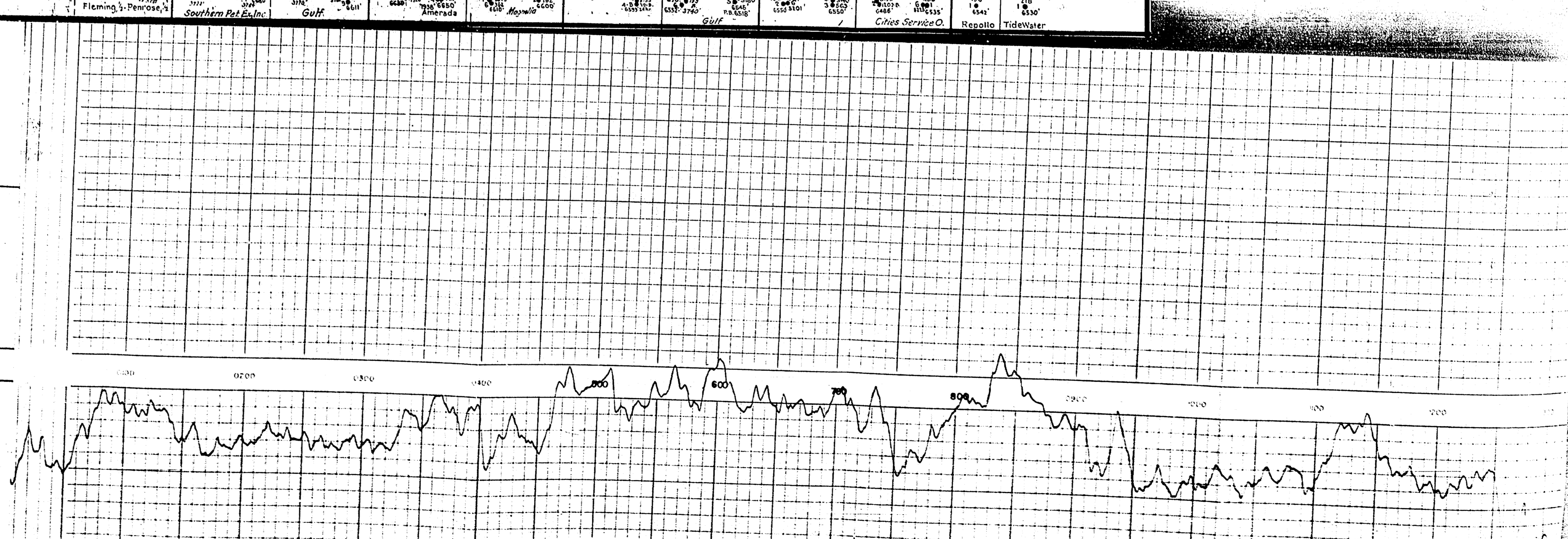
**SCHLUMBERGER WELL SURVEYING CORPORATION**  
**Electrical Log**

COMPANY: CITIES SERVICE OIL  
 LOCATION: BRUNSON  
 FIELD NO.: BRUNSON  
 LOCATION SEC. 15-215-37E  
 COUNTY: LEA  
 STATE: NEW MEXICO

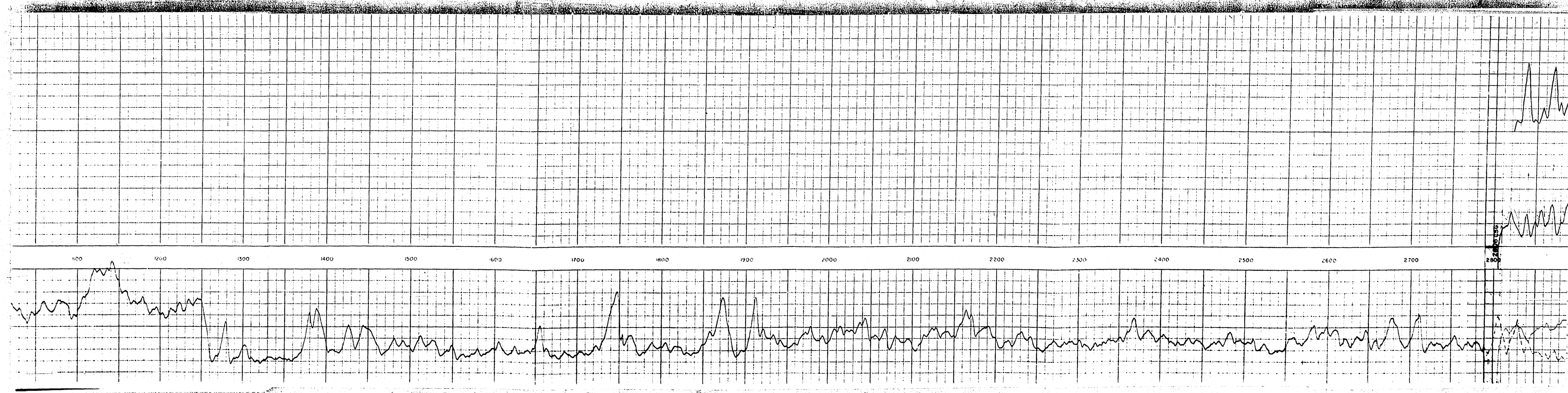
WELL STATE 5-3  
 Elevation D.P. 3447'  
 FILING No.

Run No.	1-51
Start Reading	2800
End Reading	2800
Foot Measured	2800
Cip. Schum.	2800
Depth Driller	2800
Depth Reacher	2800
Bottom Driller	2800
Depth Datum	2800
Mud Net.	2800
Density	10.2
Viscosity	10.2
Resist.	10.2
Max. Temp.	10.2
Sp. Grav.	10.2
Dr. No.	10.2
Truck No.	10.2
Recorded by	10.2
Witnessed by	10.2

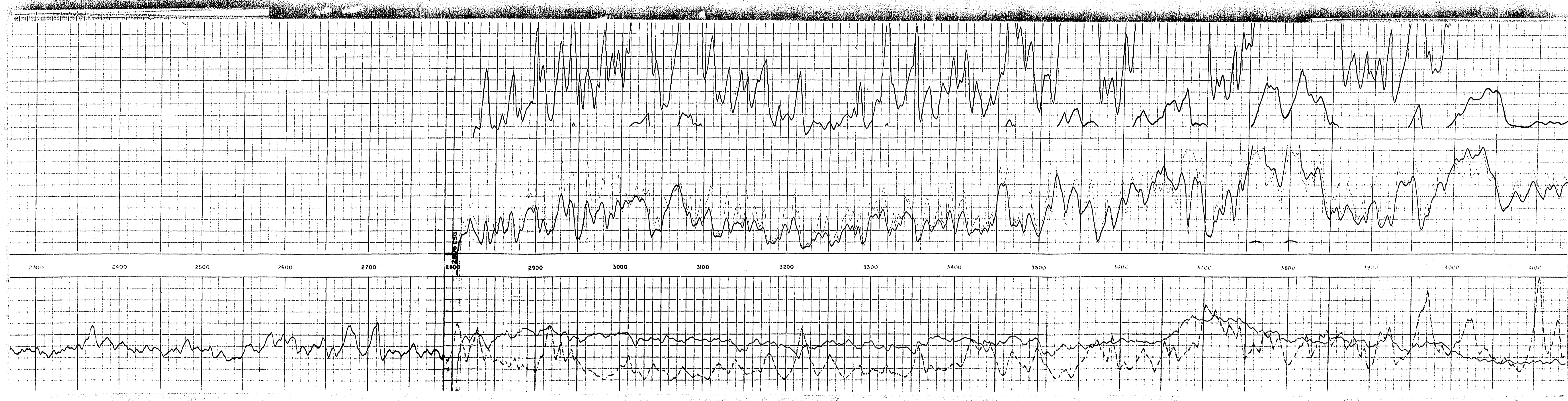
RESISTIVITY -ohms. m <sup>2</sup> /m	0	150	300	450	600	750	900	1050	1200	1350	1500	1650	1800	1950	2100	2250	2400	2550	2700	2850	3000
RESISTIVITY -ohms. m <sup>2</sup> /m	0	150	300	450	600	750	900	1050	1200	1350	1500	1650	1800	1950	2100	2250	2400	2550	2700	2850	3000
SPONTANEOUS POTENTIAL millivolts	0	150	300	450	600	750	900	1050	1200	1350	1500	1650	1800	1950	2100	2250	2400	2550	2700	2850	3000



21



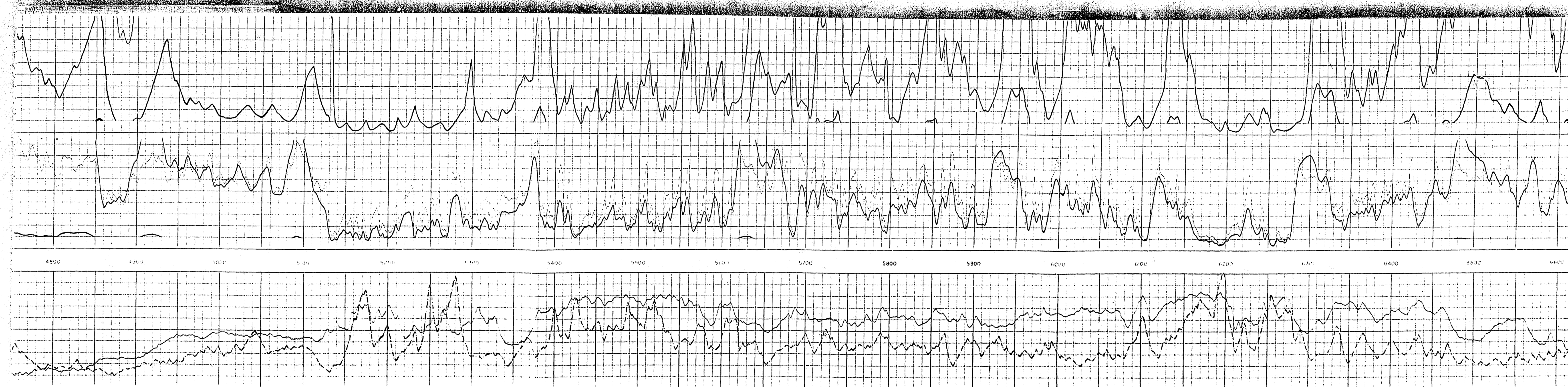
81



9

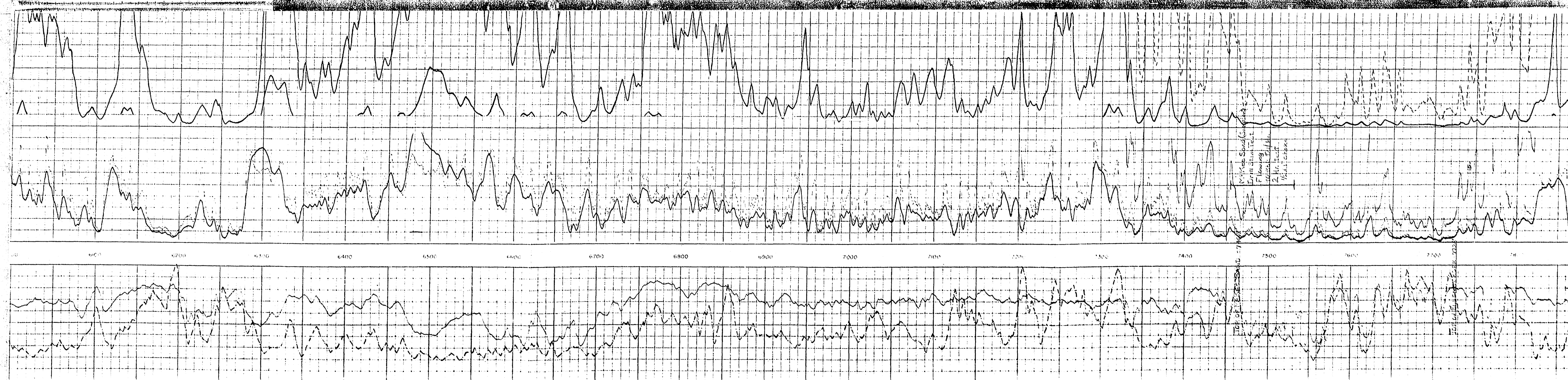


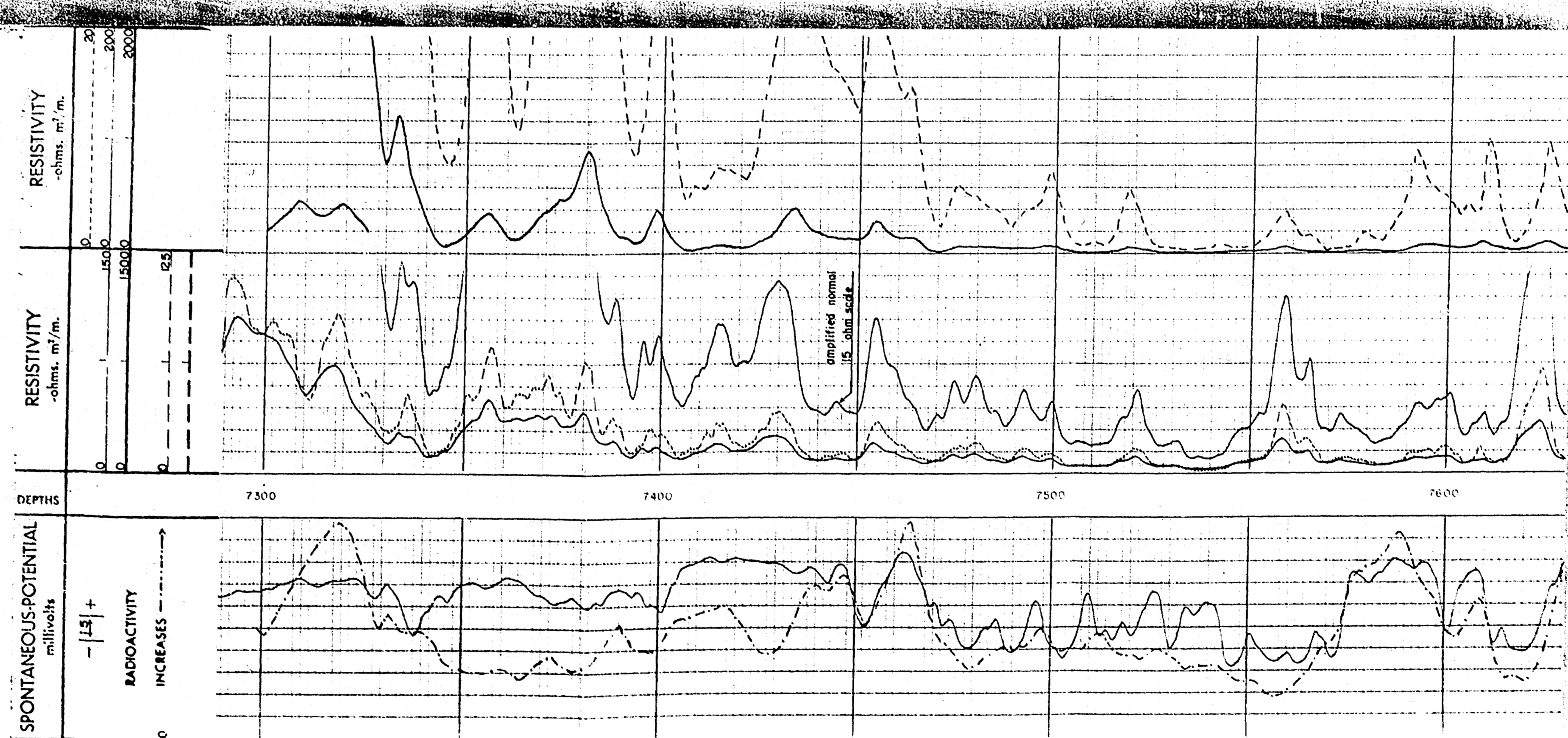
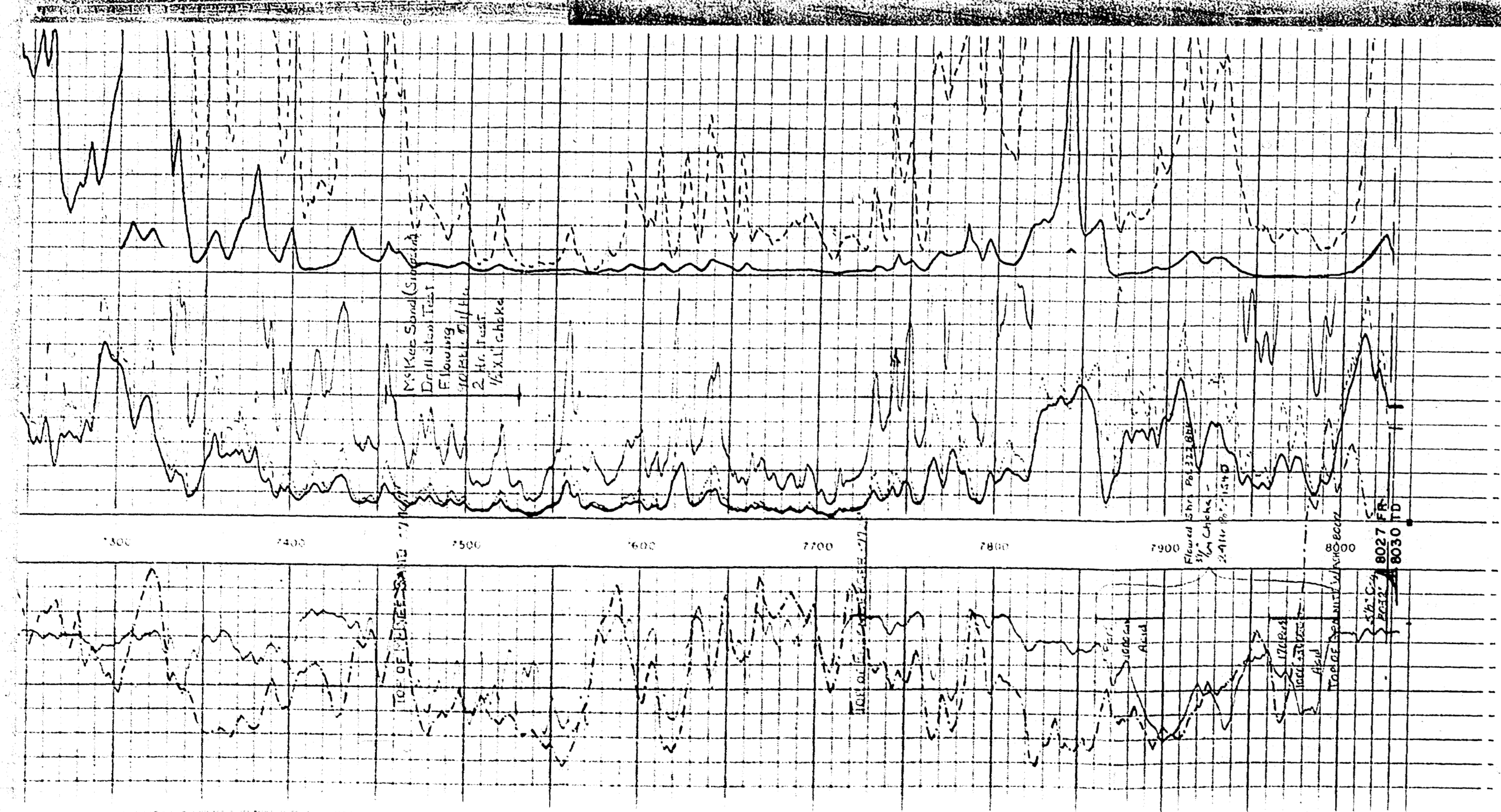
20

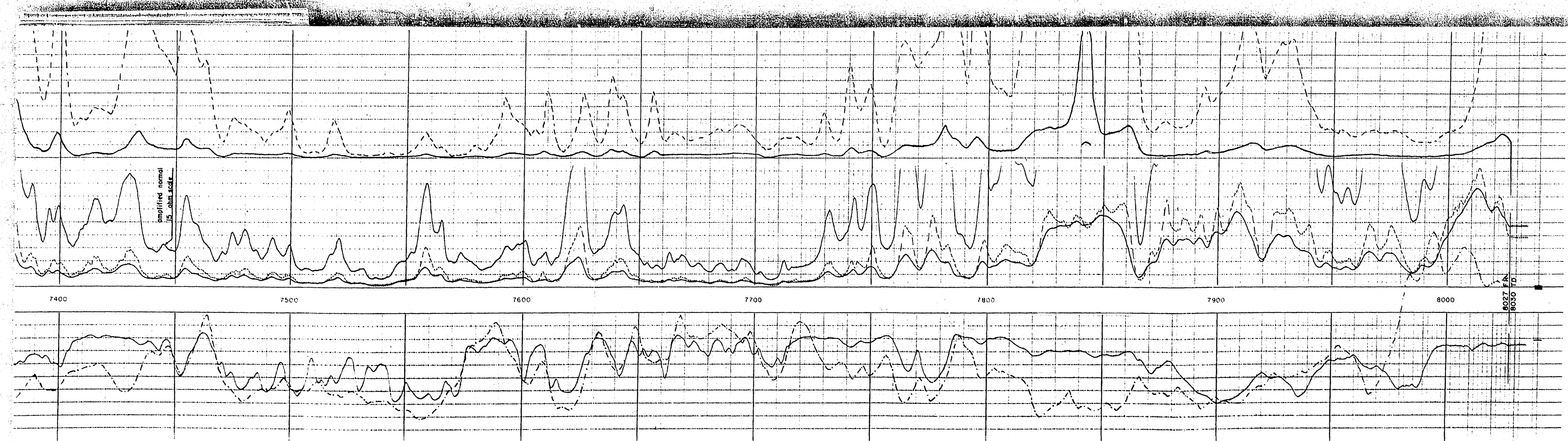


10

21







CITIES SERVICE OIL CO.  
STATE 2-  
NO. BRUNSON  
LEA COUNTY, NEW MEXICO