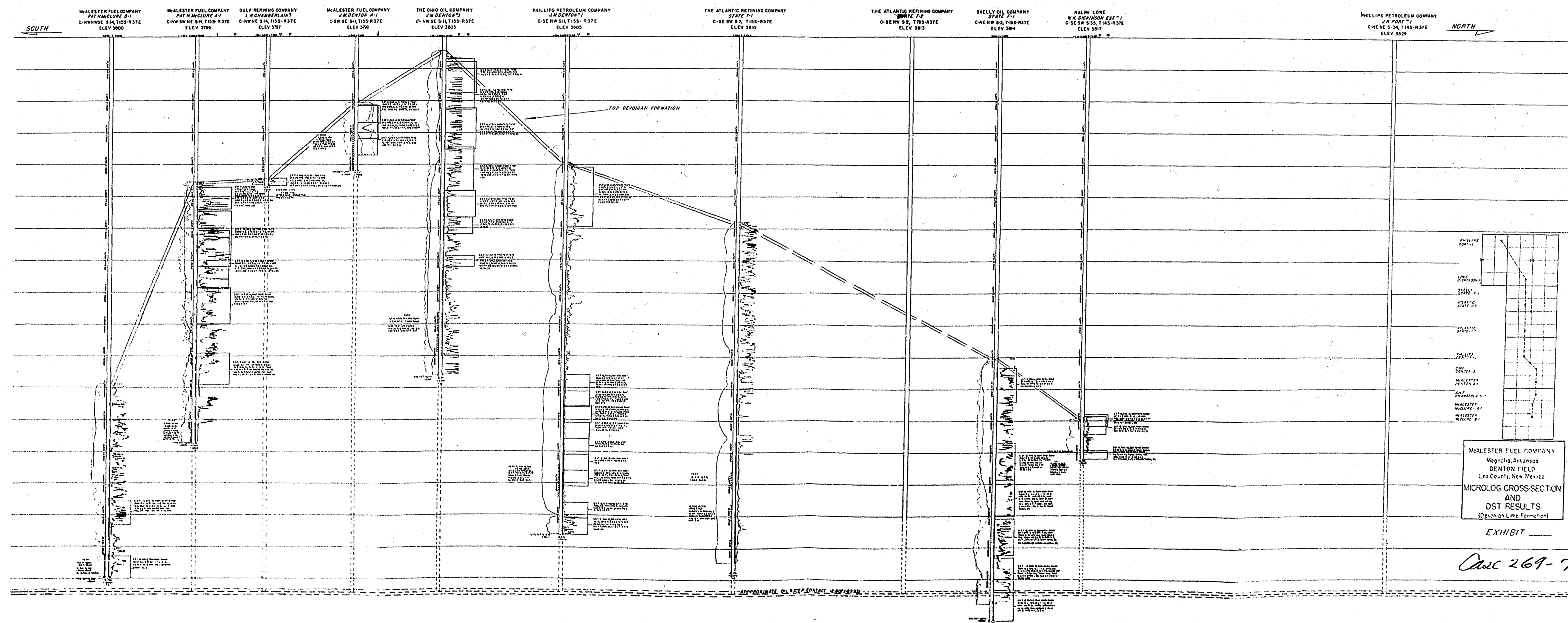


Case No.

~~269~~
270

Large Exhibits



SOUTH

NORTH

McALESTER FUEL COMPANY
PART 4 (McGLOURE #1)
C-NW SW 5/4, T155-R37E
ELEV 3799

GULF REFINING COMPANY
L.R. CHAMBERLAIN
C-NW NE 5/4, T155-R37E
ELEV 3797

McALESTER FUEL COMPANY
J.M. DENTON A-1
C-SW SE 5/4, T155-R37E
ELEV 3790

THE OHIO OIL COMPANY
J.M. DENTON #3
C-NW SE 5/4, T155-R37E
ELEV 3803

PHILLIPS PETROLEUM COMPANY
J.M. DENTON #1
C-SE NW 5/4, T155-R37E
ELEV 3805

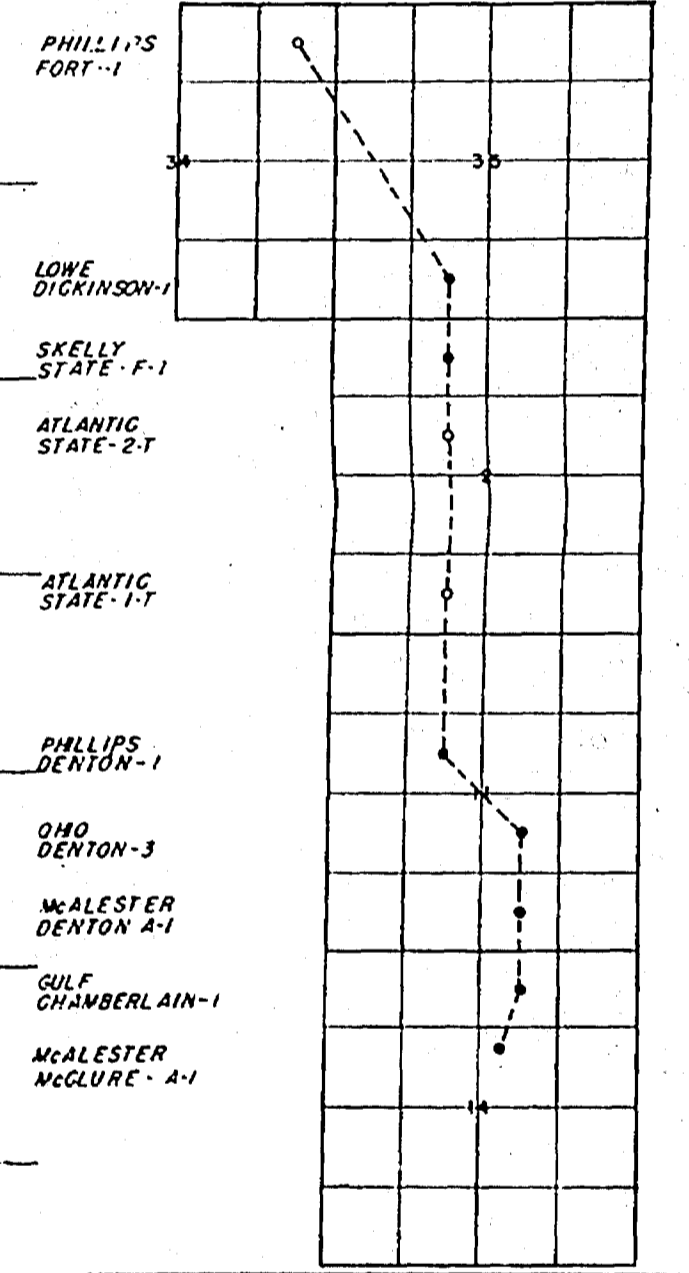
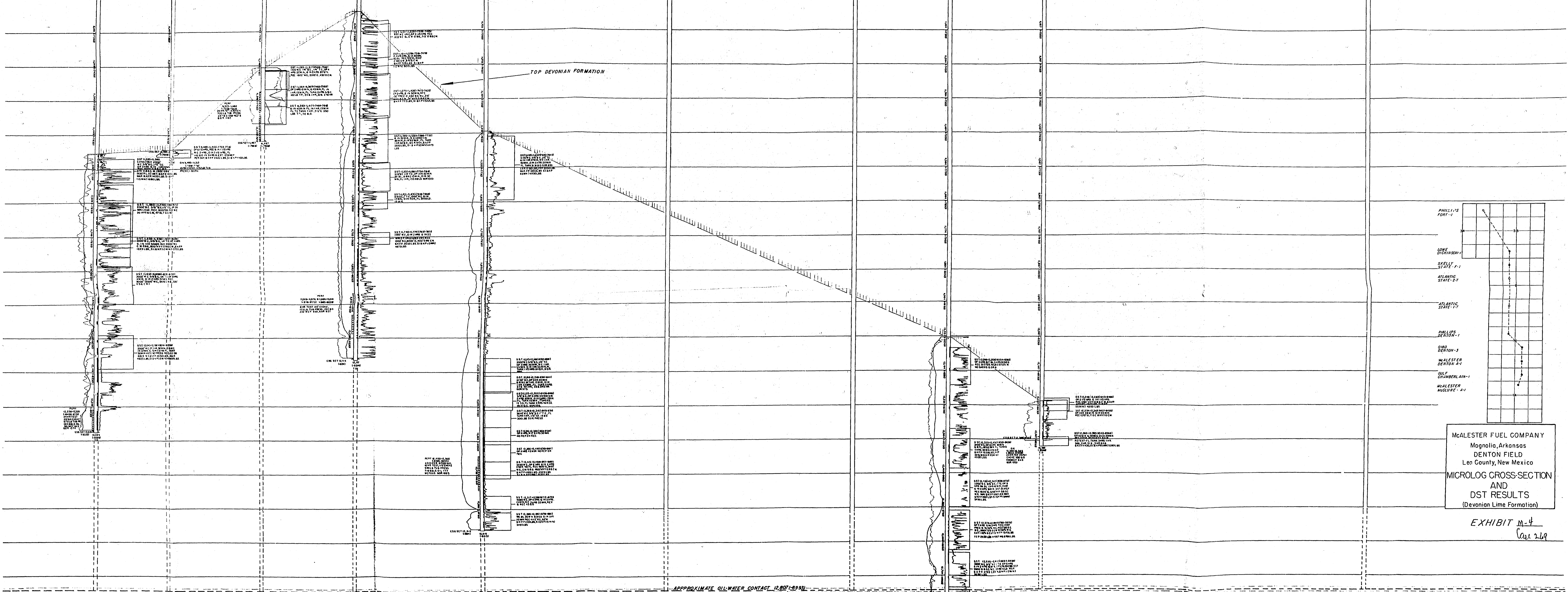
THE ATLANTIC REFINING COMPANY
STATE #1
C-SE SW 5/4, T155-R37E
ELEV 3810

THE ATLANTIC REFINING COMPANY
STATE #2
C-SE NW 5/4, T155-R37E
ELEV 3813

SKELLY OIL COMPANY
STATE #1
C-NE NW 5/4, T155-R37E
ELEV 3814

RALPH LOWE
W.K. DICKINSON EST. #1
C-SE SW 5/4, T145-R37E
ELEV 3817

PHILLIPS PETROLEUM COMPANY
J.R. FORT #1
C-NE NE 5/4, T145-R37E
ELEV 3829



McALESTER FUEL COMPANY
Magnolia, Arkansas
DENTON FIELD
Leon County, New Mexico
MICROLOG CROSS-SECTION
AND
DST RESULTS
(Devonian Lime Formation)

EXHIBIT #4
Case 269