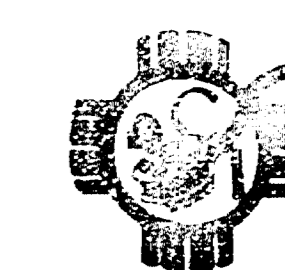


Case No.
7241

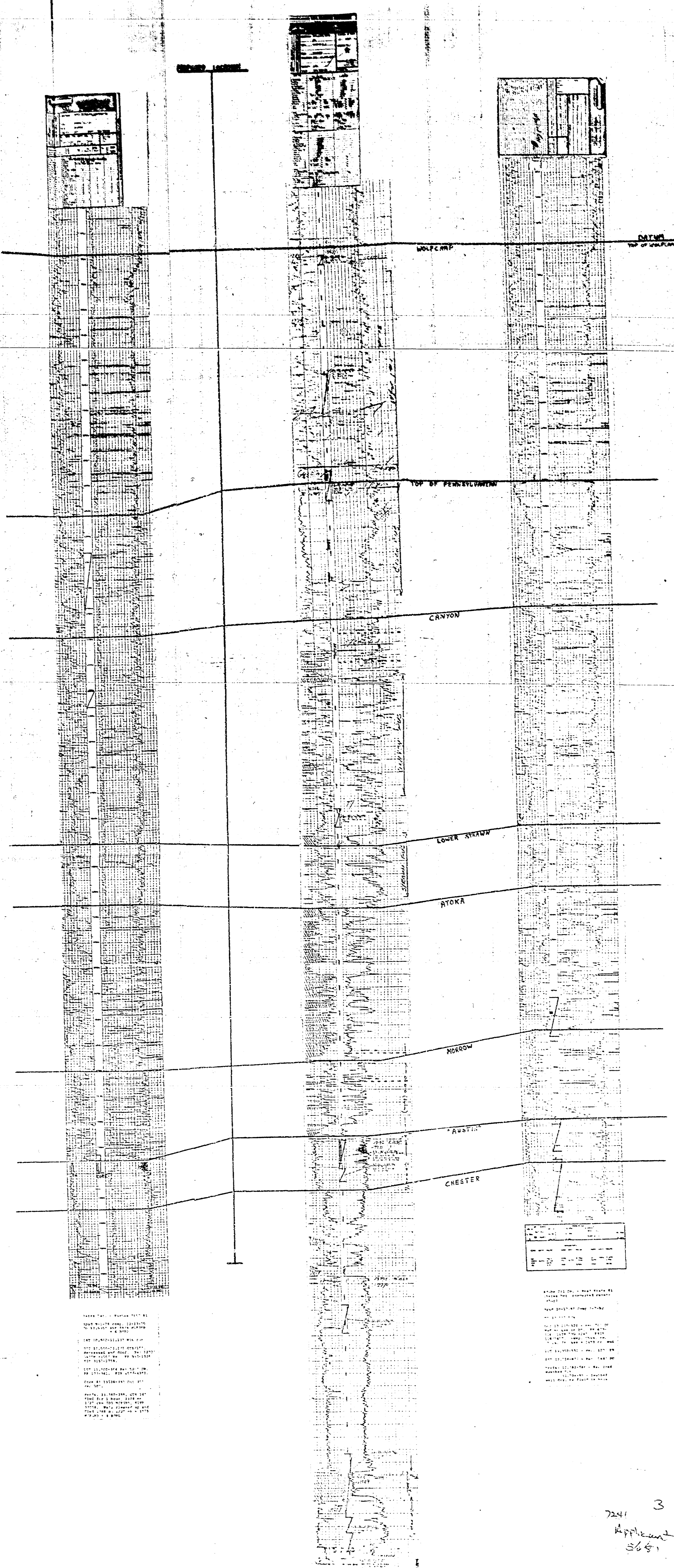
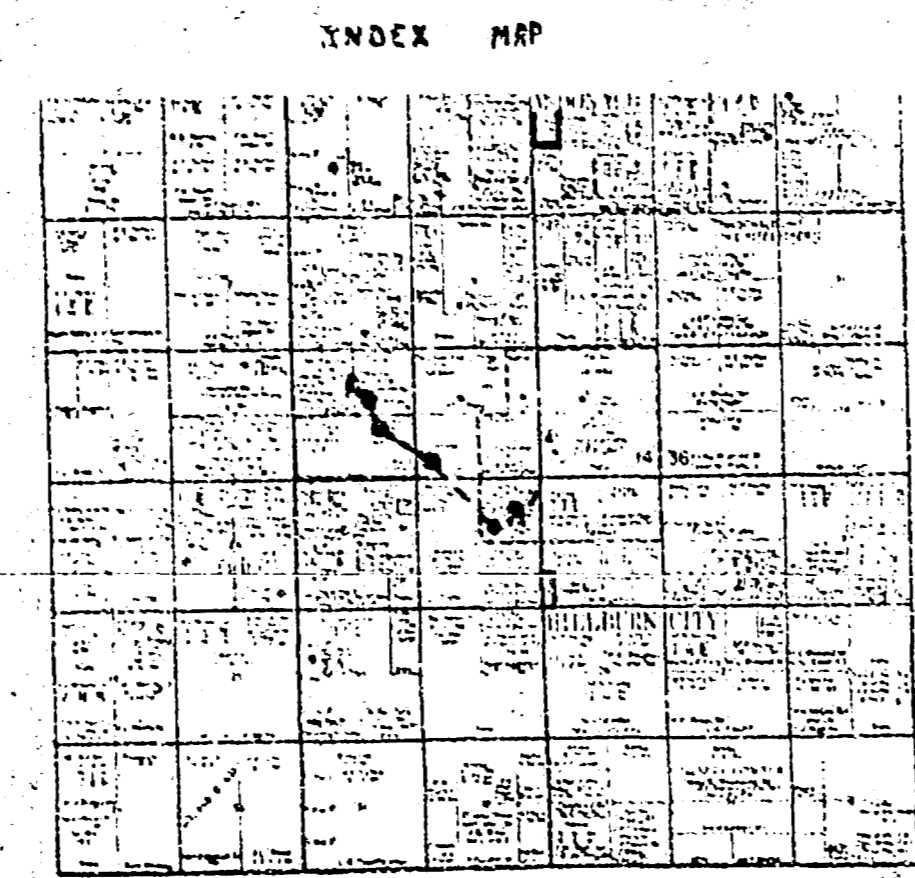
Large Exhibits

U.S. GOVERNMENT PRINTING OFFICE



BEST AVAILABLE COPY

ENTWHEAT



ENTWHEAT

WELL NO. 1

WELL NO. 2

WELL NO. 3

WELL NO. 4

WELL NO. 5

WELL NO. 6

WELL NO. 7

WELL NO. 8

WELL NO. 9

WELL NO. 10

WELL NO. 11

WELL NO. 12

WELL NO. 13

WELL NO. 14

WELL NO. 15

WELL NO. 16

WELL NO. 17

WELL NO. 18

WELL NO. 19

WELL NO. 20

WELL NO. 21

WELL NO. 22

WELL NO. 23

WELL NO. 24

WELL NO. 25

WELL NO. 26

WELL NO. 27

WELL NO. 28

WELL NO. 29

WELL NO. 30

WELL NO. 31

WELL NO. 32

WELL NO. 33

WELL NO. 34

WELL NO. 35

WELL NO. 36

WELL NO. 37

WELL NO. 38

WELL NO. 39

WELL NO. 40

WELL NO. 41

WELL NO. 42

WELL NO. 43

WELL NO. 44

WELL NO. 45

WELL NO. 46

WELL NO. 47

WELL NO. 48

WELL NO. 49

WELL NO. 50

WELL NO. 51

WELL NO. 52

WELL NO. 53

WELL NO. 54

WELL NO. 55

WELL NO. 56

WELL NO. 57

WELL NO. 58

WELL NO. 59

WELL NO. 60

WELL NO. 61

WELL NO. 62

WELL NO. 63

WELL NO. 64

WELL NO. 65

WELL NO. 66

WELL NO. 67

WELL NO. 68

WELL NO. 69

WELL NO. 70

WELL NO. 71

WELL NO. 72

WELL NO. 73

WELL NO. 74

WELL NO. 75

WELL NO. 76

WELL NO. 77

WELL NO. 78

WELL NO. 79

WELL NO. 80

WELL NO. 81

WELL NO. 82

WELL NO. 83

WELL NO. 84

WELL NO. 85

WELL NO. 86

WELL NO. 87

WELL NO. 88

WELL NO. 89

WELL NO. 90

WELL NO. 91

WELL NO. 92

WELL NO. 93

WELL NO. 94

WELL NO. 95

WELL NO. 96

WELL NO. 97

WELL NO. 98

WELL NO. 99

WELL NO. 100

1	2	3	4	5	6	7	8	9	10
11	12	13	14	15	16	17	18	19	20
21	22	23	24	25	26	27	28	29	30
31	32	33	34	35	36	37	38	39	40
41	42	43	44	45	46	47	48	49	50
51	52	53	54	55	56	57	58	59	60
61	62	63	64	65	66	67	68	69	70
71	72	73	74	75	76	77	78	79	80
81	82	83	84	85	86	87	88	89	90
91	92	93	94	95	96	97	98	99	100

WELL NO. 1

WELL NO. 2

WELL NO. 3

WELL NO. 4

WELL NO. 5

WELL NO. 6

WELL NO. 7

WELL NO. 8

WELL NO. 9

WELL NO. 10

WELL NO. 11

WELL NO. 12

WELL NO. 13

WELL NO. 14

WELL NO. 15

WELL NO. 16

WELL NO. 17

WELL NO. 18

WELL NO. 19

WELL NO. 20

WELL NO. 21

WELL NO. 22

WELL NO. 23

WELL NO. 24

WELL NO. 25

WELL NO. 26

WELL NO. 27

WELL NO. 28

WELL NO. 29

WELL NO. 30

WELL NO. 31

WELL NO. 32

WELL NO. 33

WELL NO. 34

WELL NO. 35

WELL NO. 36

WELL NO. 37

WELL NO. 38

WELL NO. 39

WELL NO. 40

WELL NO. 41

WELL NO. 42

WELL NO. 43

WELL NO. 44

WELL NO. 45

WELL NO. 46

WELL NO. 47

WELL NO. 48

WELL NO. 49

WELL NO. 50

WELL NO. 51

WELL NO. 52

WELL NO. 53

WELL NO. 54

WELL NO. 55

WELL NO. 56

WELL NO. 57

WELL NO. 58

WELL NO. 59

WELL NO. 60

WELL NO. 61

WELL NO. 62

WELL NO. 63

WELL NO. 64

WELL NO. 65

WELL NO. 66

WELL NO. 67

WELL NO. 68

WELL NO. 69

WELL NO. 70

WELL NO. 71

WELL NO. 72

WELL NO. 73

WELL NO. 74

WELL NO. 75

WELL NO. 76

WELL NO. 77

WELL NO. 78

WELL NO. 79

WELL NO. 80

WELL NO. 81

WELL NO. 82

WELL NO. 83

WELL NO. 84

WELL NO. 85

WELL NO. 86

WELL NO. 87

WELL NO. 88

WELL NO. 89

WELL NO. 90

WELL NO. 91

WELL NO. 92

WELL NO. 93

WELL NO. 94

WELL NO. 95

WELL NO. 96

WELL NO. 97

WELL NO. 98

WELL NO. 99

WELL NO. 100

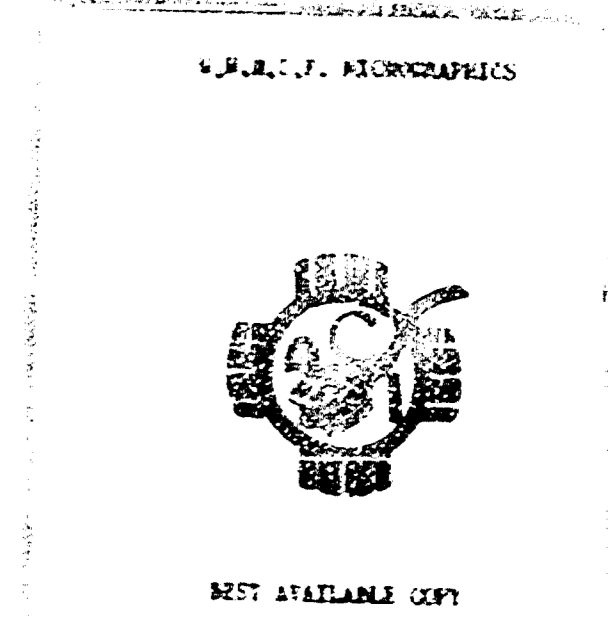
7241 3

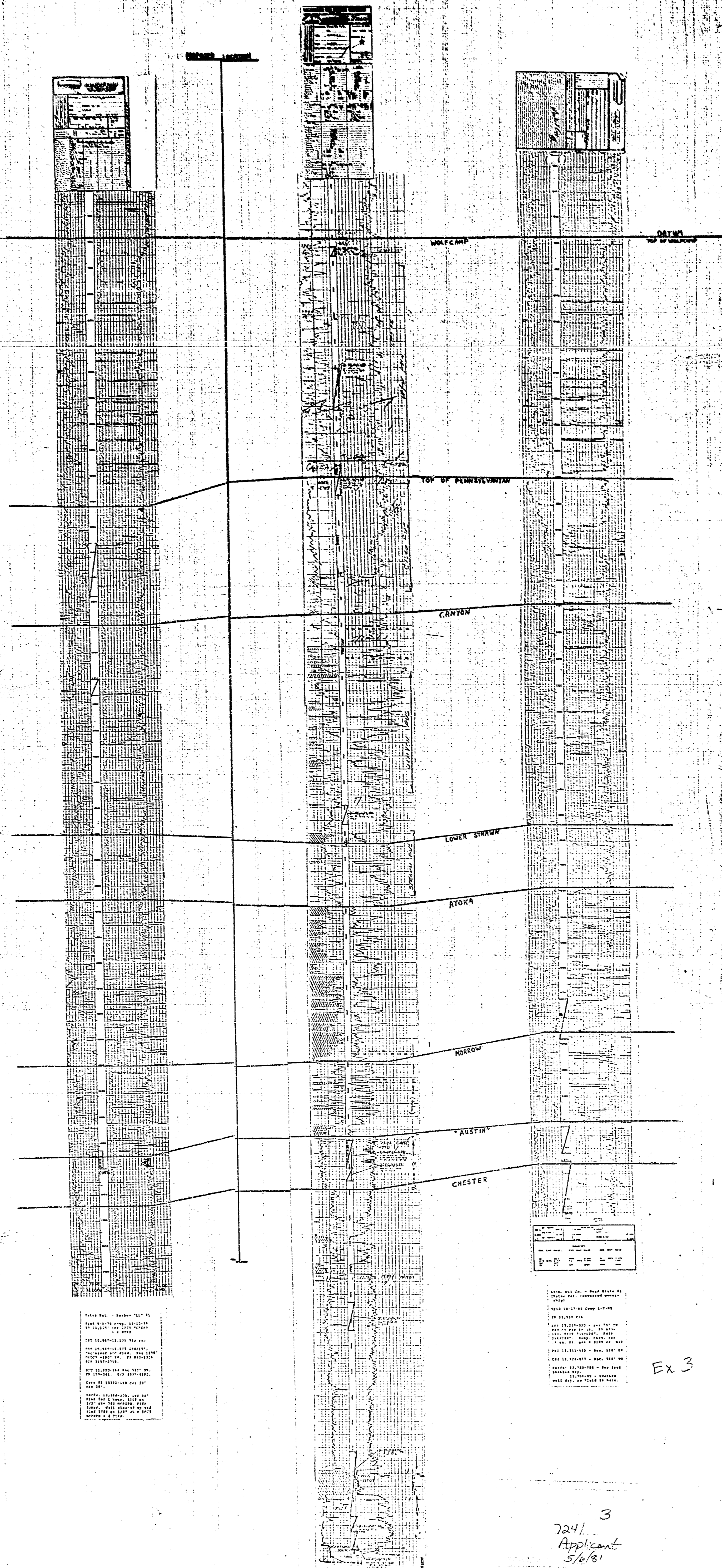
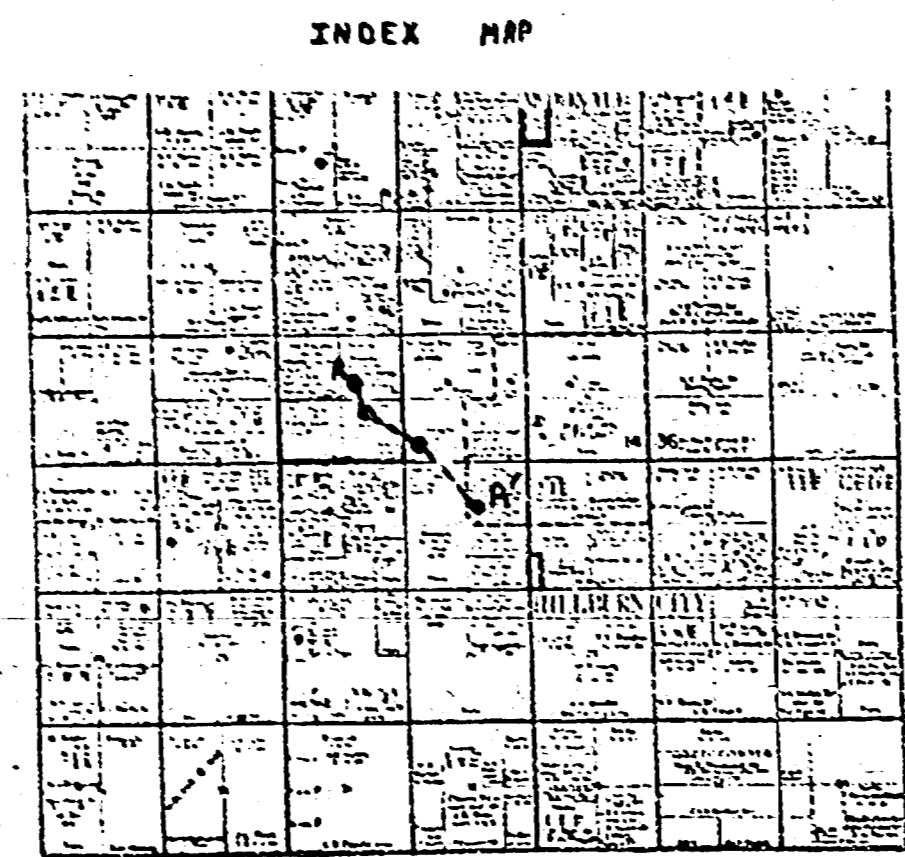
W. H. H. H. H.

3687

PERVEY E. YATES COMPANY
ROSELLE, NEW MEXICO

AUSTIN PROSPECT
Cross-Section A-A'





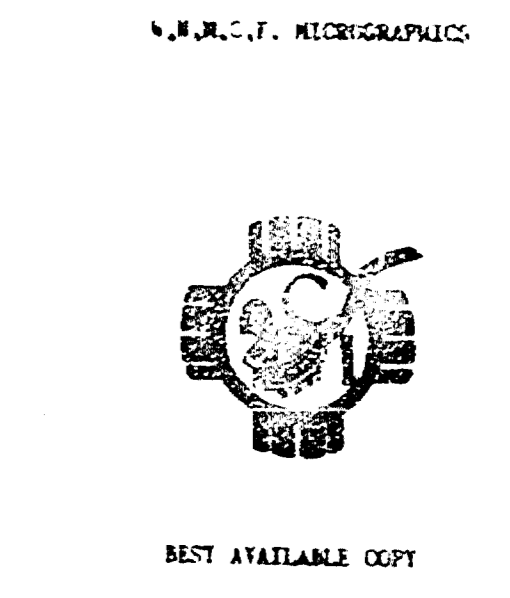
Scale 1:10,000
 1" = 100'

1	2	3	4	5	6	7	8	9	10
100	200	300	400	500	600	700	800	900	1000

Ex 3

3
 Applicant
 5/6/81

WHEEY & JONES COMPANY
 ROSWELL, NEW MEXICO
AUSTIN PROSPECT
 Cross-Section A-K



NOT AVAILABLE COPY

