



Triste Draw 25 Federal  
Com 13H API  
30-025-44001  
N-25-23S-32E  
560 FSL 2370 FWL  
Lea Co. NM

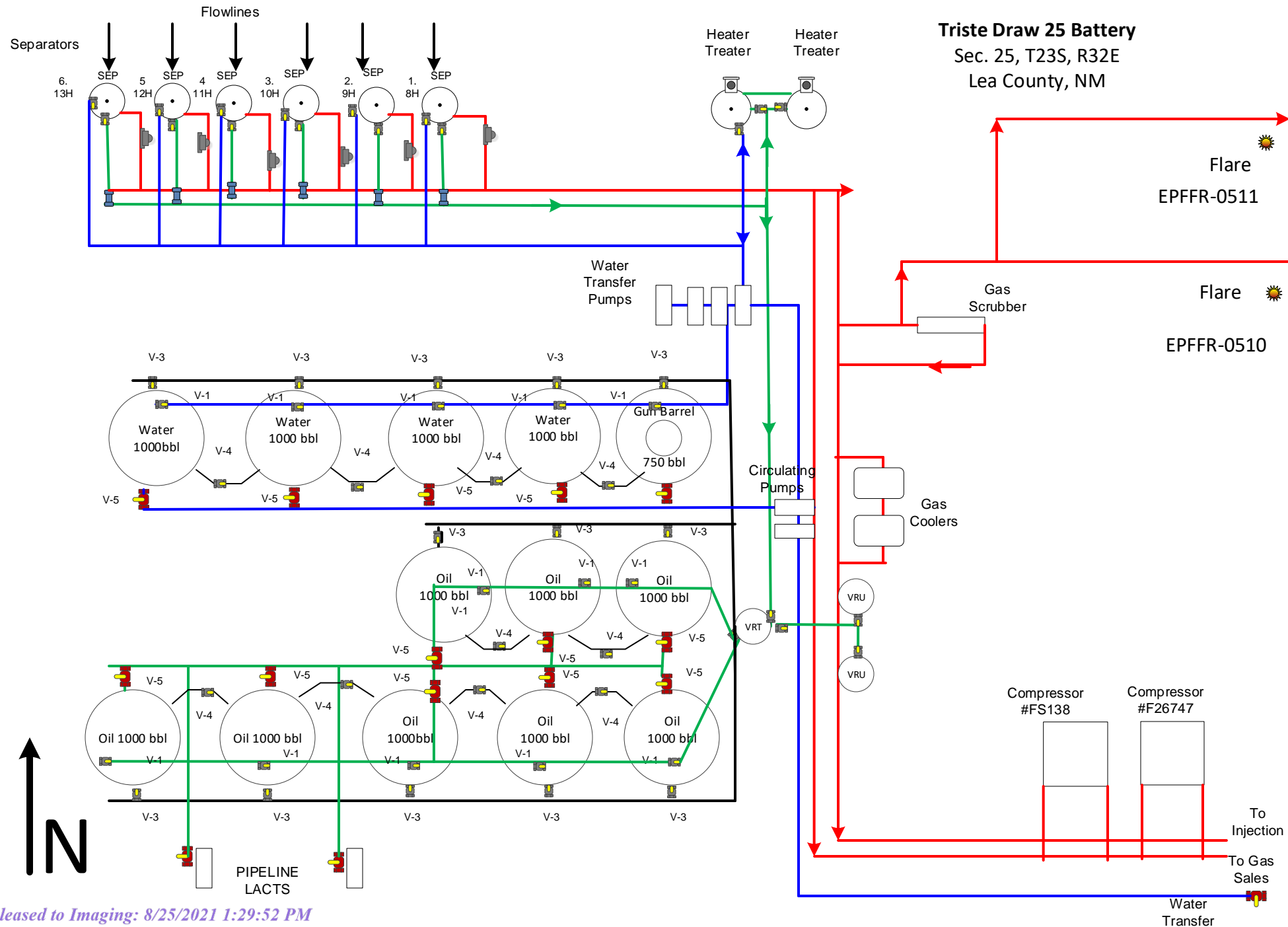
Triste Draw 25 Federal  
Com 12H API  
30-025-43998  
N-25-23S-32E  
560 FSL 2350 FWL  
Lea Co. NM

Triste Draw 25 Federal  
Com 11H API  
30-025-43997  
N-25-23S-32E  
560 FSL 2350 FWL  
Lea Co. NM

Triste Draw 25 Federal  
Com 10H API  
30-025-42082  
M-25-23S-32E  
510 FSL 1120 FWL  
Lea Co. NM

Triste Draw 25 Federal  
Com 9H API  
30-025-42198  
M-25-23S-32E  
510 FSL 1100 FWL  
Lea Co. NM

Triste Draw 25 Federal  
Com 8H API  
30-02542102  
M-25-23S-32E  
510 FSL 1080 FEWL  
Lea Co. NM





**District I**

1625 N. French Dr., Hobbs, NM 88240  
Phone:(575) 393-6161 Fax:(575) 393-0720

**District II**

811 S. First St., Artesia, NM 88210  
Phone:(575) 748-1283 Fax:(575) 748-9720

**District III**

1000 Rio Brazos Rd., Aztec, NM 87410  
Phone:(505) 334-6178 Fax:(505) 334-6170

**District IV**

1220 S. St Francis Dr., Santa Fe, NM 87505  
Phone:(505) 476-3470 Fax:(505) 476-3462

**State of New Mexico**  
**Energy, Minerals and Natural Resources**  
**Oil Conservation Division**  
**1220 S. St Francis Dr.**  
**Santa Fe, NM 87505**

QUESTIONS

Action 44397

**QUESTIONS**

Operator: CIMAREX ENERGY CO. 600 N. Marienfeld Street Midland, TX 79701	OGRID: 215099
	Action Number: 44397
	Action Type: [UF-FAC] TB Registration (TB-REG)

**QUESTIONS**

<b>Facility Details</b>	
<i>Please answer all of the questions in this group.</i>	
Name of the facility	TRISTE DRAW 25 FED COM 8H-13H
Date the facility was opened	Not answered.
Depth to ground water, if known	Not answered.

<b>Verification</b>	
Does the operator have other facilities with a matching name	No
Are there other facilities located within approximately 50 feet	No

**District I**

1625 N. French Dr., Hobbs, NM 88240  
Phone:(575) 393-6161 Fax:(575) 393-0720

**District II**

811 S. First St., Artesia, NM 88210  
Phone:(575) 748-1283 Fax:(575) 748-9720

**District III**

1000 Rio Brazos Rd., Aztec, NM 87410  
Phone:(505) 334-6178 Fax:(505) 334-6170

**District IV**

1220 S. St Francis Dr., Santa Fe, NM 87505  
Phone:(505) 476-3470 Fax:(505) 476-3462

**State of New Mexico**  
**Energy, Minerals and Natural Resources**  
**Oil Conservation Division**  
**1220 S. St Francis Dr.**  
**Santa Fe, NM 87505**

ACKNOWLEDGMENTS

Action 44397

**ACKNOWLEDGMENTS**

Operator: CIMAREX ENERGY CO. 600 N. Marienfeld Street Midland, TX 79701	OGRID: 215099
	Action Number: 44397
	Action Type: [UF-FAC] TB Registration (TB-REG)

**ACKNOWLEDGMENTS**

<input checked="" type="checkbox"/>	I certify that I am authorized to register a facility on behalf of the responsible operator.
<input checked="" type="checkbox"/>	I certify that I will notify OCD of any changes of ownership for this facility.
<input checked="" type="checkbox"/>	I certify that I will notify OCD when this facility is closed.