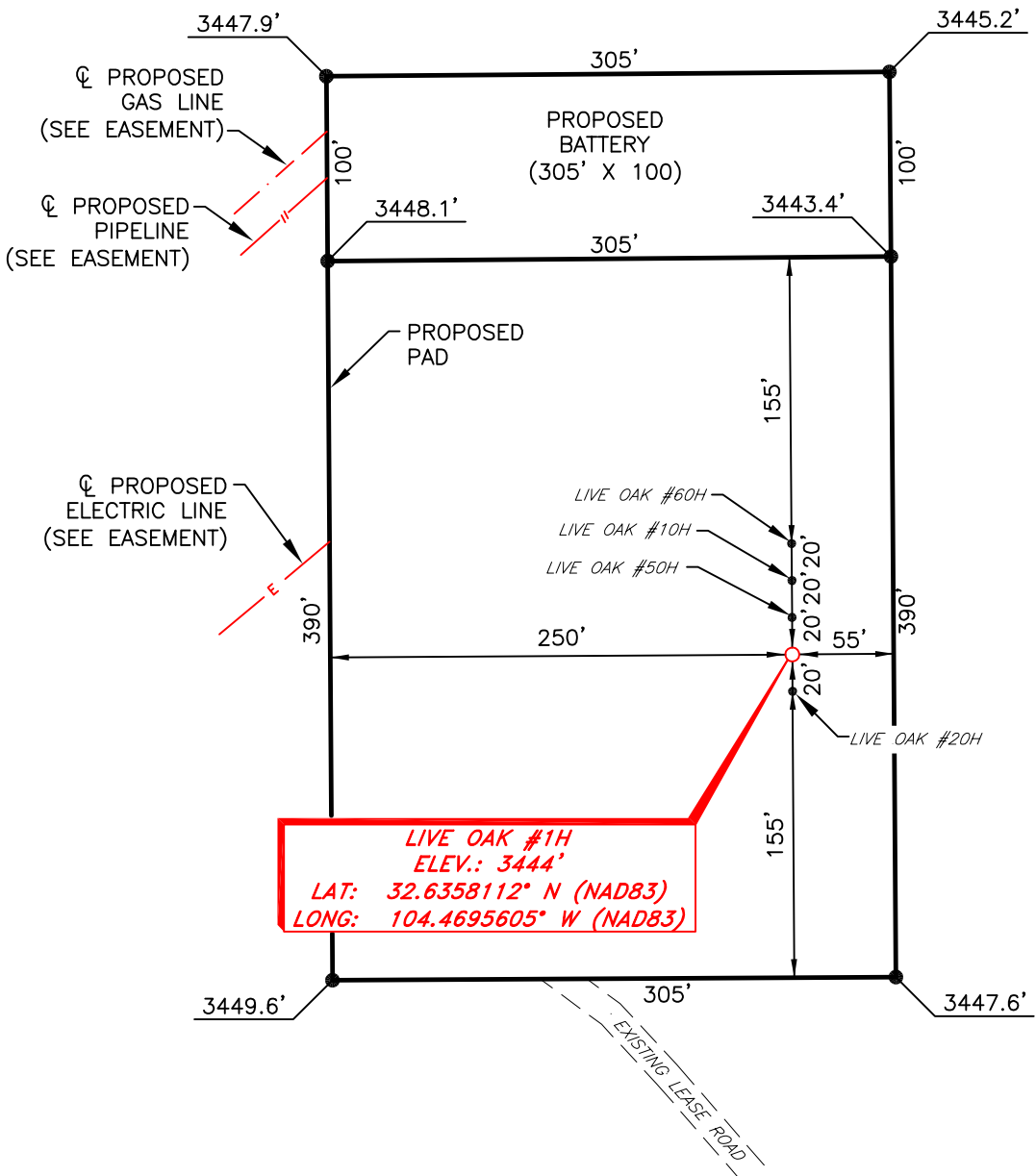


SPUR ENERGY PARTNERS LLC.
LIVE OAK #1H
(1085' FNL & 1663' FEL)
SECTION 27, T19S, R25E
N. M. P. M., EDDY COUNTY, NEW MEXICO



DIRECTIONS TO LOCATION

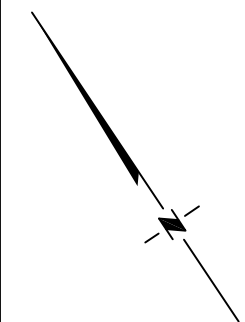
From the intersection of U.S. HWY 285 and CR #21 (Rocking R Red Rd.);
Go West on CR #21 approx. 4.4 miles to a lease road on the left;
Turn left and go South approx. 0.4 miles to a curve to the right;
Turn right and go West approx. 0.2 miles to a curve to the left;
Turn left and go South approx. 1.0 miles to a lease road on the left;
Turn left and go East approx. 0.3 miles to a curve to the left;
Turn left and go North approx. 0.2 miles to location on the right.

I, R. M. Howett, a N. M. Professional Surveyor, hereby certify that I prepared this unclassified survey of a well location from an actual survey made on the ground under my direct supervision, said survey and plat meet the Min. Stds. for Land Surveying in the State of N. M. and are true and correct to the best of my knowledge and belief.

Robert M. Howett
Robert M. Howett NM PS 19680



Copyright 2016 - All Rights Reserved



SCALE: 1" = 100'
0 50 100

BEARINGS ARE
NAD 83 GRID - NM EAST
DISTANCES ARE GROUND

NO.	REVISION	DATE
JOB NO.:	LS20110663	
DWG. NO.:	20110663-5	



701 S. CECIL ST., HOBBS, NM 88240 (575) 964-8200

SCALE: 1" = 100'
DATE: 11-17-2020
SURVEYED BY: JF/JH
DRAWN BY: LPS
APPROVED BY: RMH
SHEET: 1 OF 1

District I

1625 N. French Dr., Hobbs, NM 88240
Phone:(575) 393-6161 Fax:(575) 393-0720

District II

811 S. First St., Artesia, NM 88210
Phone:(575) 748-1283 Fax:(575) 748-9720

District III

1000 Rio Brazos Rd., Aztec, NM 87410
Phone:(505) 334-6178 Fax:(505) 334-6170

District IV

1220 S. St Francis Dr., Santa Fe, NM 87505
Phone:(505) 476-3470 Fax:(505) 476-3462

State of New Mexico
Energy, Minerals and Natural Resources
Oil Conservation Division
1220 S. St Francis Dr.
Santa Fe, NM 87505

QUESTIONS

Action 51034

QUESTIONS

Operator: Spur Energy Partners LLC 9655 Katy Freeway Houston, TX 77024	OGRID: 328947
	Action Number: 51034
	Action Type: [UF-FAC] TB Registration (TB-REG)

QUESTIONS

Facility Details	
Please answer all of the questions in this group.	
Name of the facility	Live Oak Central Tank Battery
Date the facility was opened	Not answered.
Depth to ground water, if known	Not answered.

Verification	
Does the operator have other facilities with a matching name	No
Are there other facilities located within approximately 50 feet	No

District I
1625 N. French Dr., Hobbs, NM 88240
Phone:(575) 393-6161 Fax:(575) 393-0720
District II
811 S. First St., Artesia, NM 88210
Phone:(575) 748-1283 Fax:(575) 748-9720
District III
1000 Rio Brazos Rd., Aztec, NM 87410
Phone:(505) 334-6178 Fax:(505) 334-6170
District IV
1220 S. St Francis Dr., Santa Fe, NM 87505
Phone:(505) 476-3470 Fax:(505) 476-3462

State of New Mexico
Energy, Minerals and Natural Resources
Oil Conservation Division
1220 S. St Francis Dr.
Santa Fe, NM 87505

ACKNOWLEDGMENTS

Action 51034

ACKNOWLEDGMENTS

Operator: Spur Energy Partners LLC 9655 Katy Freeway Houston, TX 77024	OGRID: 328947
	Action Number: 51034
	Action Type: [UF-FAC] TB Registration (TB-REG)

ACKNOWLEDGMENTS

<input checked="" type="checkbox"/>	I certify that I am authorized to register a facility on behalf of the responsible operator.
<input checked="" type="checkbox"/>	I certify that I will notify OCD of any changes of ownership for this facility.
<input checked="" type="checkbox"/>	I certify that I will notify OCD when this facility is closed.