

Closure Report

Incident ID: NAB1919055677

Site Description

Site Name:	Length CC 6-7 Fed Com 22H
Company:	Oxy, Permian
Legal Description:	U/L D, Section 6, T24S, R29E
County:	Eddy County, NM
GPS Coordinates:	N 32.25274 W -104.02960

Release Data

Date of Release:	4/2/2019
Type of Release:	Oil
Source of Release:	Pit Overflow
Volume of Release:	20 bbls
Volume Recovered:	18 bbls

Remediation Specifications

Remediation Parameters:	The entire leak area has been excavated to a depth of 4 feet. Bottom and sidewall confirmation samples were collected every 75 feet. Clean soil was used to backfill the entire site.
Remediation Activities:	10/22/20 to 2/10/21

Plan Sent to OCD:	2/11/2020	Receipted fee application payment 7RLOP-200211-C-1410
OCD Approval of Plan:	3/18/2020	Email to Wade Dittrich from OCD online
Plan Sent to BLM:	N/A	
BLM Approval of Plan:	N/A	

Supporting Documentation

Initial C-141	signed and included	
C-141, page 6	signed and included	
Site Diagram	Google Earth map with excavation depths & confirmation sample points	
Pictures	Remediation photos	
Lab Summary/Analysis	Confirmation lab summary/analysis report for 11/18/20 - 11/20/20	
Depth to Groundwater	USGS Info	

Request for Closure

Based on the completion of the remediation plan as agreed upon, BBC International requests closure approval from NMOCD.		
Cliff Brunson, President of BBC International Inc.		3/12/2021

District I
1625 N. French Dr., Hobbs, NM 88240
District II
811 S. First St., Artesia, NM 88210
District III
1000 Rio Brazos Road, Aztec, NM 87410
District IV
1220 S. St. Francis Dr., Santa Fe, NM 87505

State of New Mexico
Energy Minerals and Natural
Resources Department

Oil Conservation Division
1220 South St. Francis Dr.
Santa Fe, NM 87505

Form C-141
Revised August 24, 2018
Submit to appropriate OCD District office

Incident ID	
District RP	
Facility ID	
Application ID	

Release Notification

Responsible Party

Responsible Party	OXY USA INC.	OGRID	16696
Contact Name	WADE DITTRICH	Contact Telephone	(575) 390-2828
Contact email	WADE_DITTRICH@OXY.COM	Incident # (assigned by OCD)	
Contact mailing address	PO BOX 4294; HOUSTON, TX 77210		

Location of Release Source

Latitude N 32.25274 Longitude W-104.02960
(NAD 83 in decimal degrees to 5 decimal places)

Site Name	LENGTH CC 6-7 FED COM 22H	Site Type	DRILLING SITE
Date Release Discovered	4/2/19	API# (if applicable)	30-015-45565

Unit Letter	Section	Township	Range	County
D	6	24S	29E	EDDY COUNTY, NM

Surface Owner: ☐ State ☐ Federal ☐ Tribal ☒ Private (Name: OXY USA)

Nature and Volume of Release

Material(s) Released (Select all that apply and attach calculations or specific justification for the volumes provided below)

<input checked="" type="checkbox"/> Crude Oil	Volume Released (bbls) <u>20 BBLS</u>	Volume Recovered (bbls) <u>18 BBLS</u>
<input type="checkbox"/> Produced Water	Volume Released (bbls)	Volume Recovered (bbls)
	Is the concentration of dissolved chloride in the produced water >10,000 mg/l?	<input type="checkbox"/> Yes <input type="checkbox"/> No
<input type="checkbox"/> Condensate	Volume Released (bbls)	Volume Recovered (bbls)
<input type="checkbox"/> Natural Gas	Volume Released (Mcf)	Volume Recovered (Mcf)
<input type="checkbox"/> Other (describe)	Volume/Weight Released (provide units)	Volume/Weight Recovered (provide units)

Cause of Release

PIT OVERFLOW

Form C-141

State of New Mexico
Oil Conservation Division


Page 2

Incident ID	
District RP	
Facility ID	
Application ID	

Was this a major release as defined by 19.15.29.7(A) NMAC? <input type="checkbox"/> Yes <input checked="" type="checkbox"/> No	If YES, for what reason(s) does the responsible party consider this a major release?
If YES, was immediate notice given to the OCD? By whom? To whom? When and by what means (phone, email, etc)?	

Initial Response

The responsible party must undertake the following actions immediately unless they could create a safety hazard that would result in injury

<input checked="" type="checkbox"/> The source of the release has been stopped. <input checked="" type="checkbox"/> The impacted area has been secured to protect human health and the environment. <input checked="" type="checkbox"/> Released materials have been contained via the use of berms or dikes, absorbent pads, or other containment devices. <input checked="" type="checkbox"/> All free liquids and recoverable materials have been removed and managed appropriately.	
If all the actions described above have <u>not</u> been undertaken, explain why:	
Per 19.15.29.8 B. (4) NMAC the responsible party may commence remediation immediately after discovery of a release. If remediation has begun, please attach a narrative of actions to date. If remedial efforts have been successfully completed or if the release occurred within a lined containment area (see 19.15.29.11(A)(5)(a) NMAC), please attach all information needed for closure evaluation.	
I hereby certify that the information given above is true and complete to the best of my knowledge and understand that pursuant to OCD rules and regulations all operators are required to report and/or file certain release notifications and perform corrective actions for releases which may endanger public health or the environment. The acceptance of a C-141 report by the OCD does not relieve the operator of liability should their operations have failed to adequately investigate and remediate contamination that pose a threat to groundwater, surface water, human health or the environment. In addition, OCD acceptance of a C-141 report does not relieve the operator of responsibility for compliance with any other federal, state, or local laws and/or regulations.	
Printed Name: <u>Wade Dittrich</u>	Title: <u>Environmental Coordinator</u>
Signature: <u></u>	Date: <u>6-25-19</u>
email: <u>wade_dittrich@oxy.com</u>	Telephone: <u>(575) 390-2828</u>
<u>OCD Only</u>	
Received by: _____	Date: _____

Form C-141

Page 6

State of New Mexico
Oil Conservation Division

Incident ID	NAB1919055677
District RP	2RP-5521
Facility ID	
Application ID	

Closure

The responsible party must attach information demonstrating they have complied with all applicable closure requirements and any conditions or directives of the OCD. This demonstration should be in the form of a comprehensive report (electronic submittals in .pdf format are preferred) including a scaled site map, sampling diagrams, relevant field notes, photographs of any excavation prior to backfilling, laboratory data including chain of custody documents of final sampling, and a narrative of the remedial activities. Refer to 19.15.29.12 NMAC.

Closure Report Attachment Checklist: Each of the following items must be included in the closure report.

- ☒ A scaled site and sampling diagram as described in 19.15.29.11 NMAC
- ☒ Photographs of the remediated site prior to backfill or photos of the liner integrity if applicable (Note: appropriate OCD District office must be notified 2 days prior to liner inspection)
- ☒ Laboratory analyses of final sampling (Note: appropriate ODC District office must be notified 2 days prior to final sampling)
- ☒ Description of remediation activities

I hereby certify that the information given above is true and complete to the best of my knowledge and understand that pursuant to OCD rules and regulations all operators are required to report and/or file certain release notifications and perform corrective actions for releases which may endanger public health or the environment. The acceptance of a C-141 report by the OCD does not relieve the operator of liability should their operations have failed to adequately investigate and remediate contamination that pose a threat to groundwater, surface water, human health or the environment. In addition, OCD acceptance of a C-141 report does not relieve the operator of responsibility for compliance with any other federal, state, or local laws and/or regulations. The responsible party acknowledges they must substantially restore, reclaim, and re-vegetate the impacted surface area to the conditions that existed prior to the release or their final land use in accordance with 19.15.29.13 NMAC including notification to the OCD when reclamation and re-vegetation are complete.

Printed Name: Wade Dittrich Title: Environmental CoordinatorSignature:  Date: 12-1-2020email: wade_dittrich@oxy.com Telephone: (575) 390-2828**OCD Only**Received by: Chad Hensley Date: 04/09/2021

Closure approval by the OCD does not relieve the responsible party of liability should their operations have failed to adequately investigate and remediate contamination that poses a threat to groundwater, surface water, human health, or the environment nor does not relieve the responsible party of compliance with any other federal, state, or local laws and/or regulations.

Closure Approved by:  Date: 04/09/2021Printed Name: Chad Hensley Title: Environmental Specialist Advanced

Oxy Length CC 6-7 Fed Com 22H

Leak Date: 4-2-2019
Eddy County, NM
API: 30-015-45565
Incident ID: NAB1919055677

Legend

 Bottom Sample

 Leak Area

 Sidewall Sample



Google Earth

© 2020 Google



70 ft

Oxy, Length CC 6-7 Fed Com 22H

Leak Date (4-2-19)

Confirmation Sample points

B1, N 32.25275 W-104.03017

B2, N 32.25274 W-104.03013

B3, N 32.25271 W-104.03010

B4, N 32.25274 W-104.02999

B5, N 32.25270 W-104.02997

B6, N 32.25266 W-104.02994

B7, N 32.25263 W-104.02992

B8, N 32.25272 W-104.03002

B9, N 32.25268 W-104.03000

B10, N 32.25264 W-104.02998

B11, N 32.25260 W-104.02996

B12, N 32.25269 W-104.03006

B13, N 32.25267 W-104.03005

B14, N 32.25263 W-104.03004

B15, N 32.25260 W-104.03002

B16, N 32.25256 W-104.03000

B17, N 32.25269 W-104.03011

B18, N 32.25266 W-104.03009

B19, N 32.25263 W-104.03009

B20, N 32.25260 W-104.03007

B21, N 32.25256 W-104.03006

B22, N 32.25253 W-104.03004

B23, N 32.25266 W-104.03014

B24, N 32.25263 W-104.03014

B25, N 32.25260 W-104.03013

B26, N 32.25256 W-104.03011

B27, N 32.25253 W-104.03009

B28, N 32.25249 W-104.03009

B29, N 32.25265 W-104.03018

B30, N 32.25259 W-104.03016

B31, N 32.25253 W-104.03012

SW1, N 32.25272 W-104.03016

SW2, N 32.25266 W-104.03019

SW3, N 32.25256 W-104.03016

SW4, N 32.25251 W-104.03005

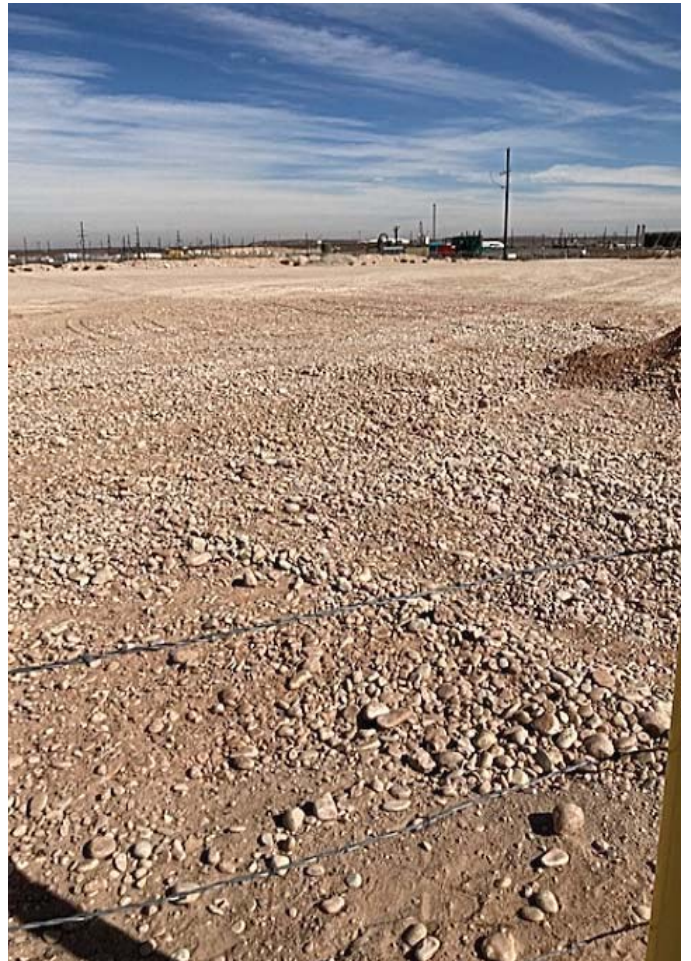
SW5, N 32.25258 W-104.02996

SW6, N 32.25265 W-104.02990

SW7, N 32.25274 W-104.02996

SW8, N 32.25273 W-104.03006

SW9, N 32.25277 W-104.03015







Laboratory Analytical Results Summary
Oxy, Length CC 6-7 Fed Com #22H (4-2-19)

		Sample ID	B1 @4'	B2 @4'	B3 @ 4'
Analyte	Method	Date	11/11/20	11/11/20	11/11/20
			mg/kg	mg/kg	mg/kg
Benzene	BTEX 8021B		<0.050	<0.050	<0.050
Toluene	BTEX 8021B		<0.050	<0.050	<0.050
Ethylbenzene	BTEX 8021B		<0.050	<0.050	<0.050
Total Xylenes	BTEX 8021B		<0.150	<0.150	<0.150
Total BTEX	BTEX 8021B		<0.300	<0.300	<0.300
Chloride	SM4500Cl-B		48.0	48.0	48.0
GRO	TPH 8015M		<10.0	<10.0	<10.0
DRO	TPH 8015M		<10.0	<10.0	<10.0
EXT DRO	TPH 8015M		<10.0	<10.0	<10.0

Laboratory Analytical Results Summary
Oxy, Length CC 6-7 Fed Com #22H 4-2-19

		Sample ID	BS1	BS2	BS3	BS4	BS5	BS6	BS7	BS8	BS9	BS10
Analyte	Method	Date	11/18/20	11/18/20	11/18/20	11/18/20	11/18/20	11/18/20	11/18/20	11/18/20	11/18/20	11/18/20
			mg/kg	mg/kg	mg/kg	mg/kg	mg/kg	mg/kg	mg/kg	mg/kg	mg/kg	mg/kg
Benzene	BTEX 8021B		<0.050	<0.050	<0.050	<0.050	<0.050	<0.050	<0.050	<0.050	<0.050	<0.050
Toluene	BTEX 8021B		<0.050	<0.050	<0.050	<0.050	<0.050	<0.050	<0.050	<0.050	<0.050	<0.050
Ethylbenzene	BTEX 8021B		<0.050	<0.050	<0.050	<0.050	<0.050	<0.050	<0.050	<0.050	<0.050	<0.050
Total Xylenes	BTEX 8021B		<0.150	<0.150	<0.150	<0.150	<0.150	<0.150	<0.150	<0.150	<0.150	<0.150
Total BTEX	BTEX 8021B		<0.300	<0.300	<0.300	<0.300	<0.300	<0.300	<0.300	<0.300	<0.300	<0.300
Chloride	SM4500Cl-B		560	432	190	160	400	192	224	320	304	384
GRO	TPH 8015M		<10.0	<10.0	<10.0	<10.0	<10.0	<10.0	<10.0	<10.0	<10.0	<10.0
DRO	TPH 8015M		<10.0	<10.0	<10.0	<10.0	<10.0	<10.0	<10.0	<10.0	20.8	17.2
EXT DRO	TPH 8015M		<10.0	<10.0	<10.0	<10.0	<10.0	<10.0	<10.0	<10.0	<10.0	<10.0

		Sample ID	BS11	BS12	BS13	BS14	BS15	BS16	BS17	BS18	BS19	BS20
Analyte	Method	Date	11/18/20	11/19/20	11/19/20	11/19/20	11/19/20	11/19/20	11/19/20	11/19/20	11/19/20	11/19/20
			mg/kg	mg/kg	mg/kg	mg/kg	mg/kg	mg/kg	mg/kg	mg/kg	mg/kg	mg/kg
Benzene	BTEX 8021B		<0.050	<0.050	<0.050	<0.050	<0.050	<0.050	<0.050	<0.050	<0.050	<0.050
Toluene	BTEX 8021B		<0.050	<0.050	<0.050	<0.050	<0.050	<0.050	<0.050	<0.050	<0.050	<0.050
Ethylbenzene	BTEX 8021B		<0.050	<0.050	<0.050	<0.050	<0.050	<0.050	<0.050	<0.050	<0.050	<0.050
Total Xylenes	BTEX 8021B		<0.150	<0.150	<0.150	<0.150	<0.150	<0.150	<0.150	<0.150	<0.150	<0.150
Total BTEX	BTEX 8021B		<0.300	<0.300	<0.300	<0.300	<0.300	<0.300	<0.300	<0.300	<0.300	<0.300
Chloride	SM4500Cl-B		592	752	592	368	384	320	464	352	608	336
GRO	TPH 8015M		<10.0	<10.0	<10.0	<10.0	<10.0	<10.0	<10.0	<10.0	<10.0	<10.0
DRO	TPH 8015M		<10.0	<10.0	<10.0	<10.0	<10.0	<10.0	<10.0	<10.0	<10.0	<10.0
EXT DRO	TPH 8015M		<10.0	<10.0	<10.0	<10.0	<10.0	<10.0	<10.0	<10.0	<10.0	<10.0

		Sample ID	BS21	BS22	BS23	BS24	BS25	BS26	BS27	BS28	BS29	BS30
Analyte	Method	Date	11/19/20	11/19/20	11/19/20	11/19/20	11/19/20	11/19/20	11/19/20	11/19/20	11/19/20	11/19/20
			mg/kg	mg/kg	mg/kg	mg/kg	mg/kg	mg/kg	mg/kg	mg/kg	mg/kg	mg/kg
Benzene	BTEX 8021B		<0.050	<0.050	<0.050	<0.050	<0.050	<0.050	<0.050	<0.050	<0.050	<0.050
Toluene	BTEX 8021B		<0.050	<0.050	<0.050	<0.050	<0.050	<0.050	<0.050	<0.050	<0.050	<0.050
Ethylbenzene	BTEX 8021B		<0.050	<0.050	<0.050	<0.050	<0.050	<0.050	<0.050	<0.050	<0.050	<0.050
Total Xylenes	BTEX 8021B		<0.150	<0.150	<0.150	<0.150	<0.150	<0.150	<0.150	<0.150	<0.150	<0.150
Total BTEX	BTEX 8021B		<0.300	<0.300	<0.300	<0.300	<0.300	<0.300	<0.300	<0.300	<0.300	<0.300
Chloride	SM4500Cl-B		288	224	624	704	608	864	784	816	352	320
GRO	TPH 8015M		<10.0	<10.0	<10.0	<10.0	<10.0	<10.0	<10.0	<10.0	<10.0	<10.0
DRO	TPH 8015M		<10.0	<10.0	<10.0	<10.0	<10.0	<10.0	<10.0	<10.0	<10.0	<10.0
EXT DRO	TPH 8015M		<10.0	<10.0	<10.0	<10.0	<10.0	<10.0	<10.0	<10.0	<10.0	<10.0

		Sample ID	BS31	SW1	SW2	SW3	SW4	SW5	SW6	SW7	SW8	SW9
Analyte	Method	Date	11/19/20	11/19/20	11/19/20	11/19/20	11/20/20	11/20/20	11/20/20	11/20/20	11/20/20	11/20/20
			mg/kg	mg/kg	mg/kg	mg/kg	mg/kg	mg/kg	mg/kg	mg/kg	mg/kg	mg/kg
Benzene	BTEX 8021B		<0.050	<0.050	<0.050	<0.050	<0.050	<0.050	<0.050	<0.050	<0.050	<0.050
Toluene	BTEX 8021B		<0.050	<0.050	<0.050	<0.050	<0.050	<0.050	<0.050	<0.050	<0.050	<0.050
Ethylbenzene	BTEX 8021B		<0.050	<0.050	<0.050	<0.050	<0.050	<0.050	<0.050	<0.050	<0.050	<0.050
Total Xylenes	BTEX 8021B		<0.150	<0.150	<0.150	<0.150	<0.150	<0.150	<0.150	<0.150	<0.150	<0.150
Total BTEX	BTEX 8021B		<0.300	<0.300	<0.300	<0.300	<0.300	<0.300	<0.300	<0.300	<0.300	<0.300
Chloride	SM4500Cl-B		304	464	544	592	320	320	448	224	368	320
GRO	TPH 8015M		<10.0	<10.0	<10.0	<10.0	<10.0	<10.0	<10.0	<10.0	<10.0	<10.0
DRO	TPH 8015M		<10.0	32.9	63.3	36.1	27.9	37.0	<10.0	<10.0	<10.0	<10.0
EXT DRO	TPH 8015M		<10.0	<10.0	<10.0	<10.0	<10.0	<10.0	<10.0	<10.0	<10.0	<10.0

Laboratory Analytical Results Summary
Oxy, Length CC 6-7 Fed Com #22H (4-2-19)

		Sample ID	BS12A	BS19A	BS23A	BS24A	BS25A	BS26A	BS27A	BS28A
Analyte	Method	Date	12/17/20	12/17/20	12/17/20	12/17/20	12/17/20	12/17/20	12/17/20	12/17/20
			mg/kg	mg/kg	mg/kg	mg/kg	mg/kg	mg/kg	mg/kg	mg/kg
Benzene	BTEX 8021B		<0.050	<0.050	<0.050	<0.050	<0.050	<0.050	<0.050	<0.050
Toluene	BTEX 8021B		<0.050	<0.050	<0.050	<0.050	<0.050	<0.050	<0.050	<0.050
Ethylbenzene	BTEX 8021B		<0.050	<0.050	<0.050	<0.050	<0.050	<0.050	<0.050	<0.050
Total Xylenes	BTEX 8021B		<0.150	<0.150	<0.150	<0.150	<0.150	<0.150	<0.150	<0.150
Total BTEX	BTEX 8021B		<0.300	<0.300	<0.300	<0.300	<0.300	<0.300	<0.300	<0.300
Chloride	SM4500Cl-B		224	192	208	240	224	192	192	288
GRO	TPH 8015M		<10.0	<10.0	<10.0	<10.0	<10.0	<10.0	<10.0	<10.0
DRO	TPH 8015M		<10.0	<10.0	<10.0	<10.0	<10.0	<10.0	<10.0	<10.0
EXT DRO	TPH 8015M		<10.0	<10.0	<10.0	<10.0	<10.0	<10.0	<10.0	<10.0



PHONE (575) 393-2326 ° 101 E. MARLAND ° HOBBS, NM 88240

November 13, 2020

Cliff Brunson

BBC International, Inc.

P.O. Box 805

Hobbs, NM 88241

RE: LENGTH CC 6-7 FED COM #22H

Enclosed are the results of analyses for samples received by the laboratory on 11/12/20 17:00.

Cardinal Laboratories is accredited through Texas NELAP under certificate number T104704398-20-13. Accreditation applies to drinking water, non-potable water and solid and chemical materials. All accredited analytes are denoted by an asterisk (*). For a complete list of accredited analytes and matrices visit the TCEQ website at www.tceq.texas.gov/field/qa/lab_accred_certif.html.

Cardinal Laboratories is accredited through the State of Colorado Department of Public Health and Environment for:

Method EPA 552.2	Haloacetic Acids (HAA-5)
Method EPA 524.2	Total Trihalomethanes (TTHM)
Method EPA 524.4	Regulated VOCs (V1, V2, V3)

Accreditation applies to public drinking water matrices.

This report meets NELAP requirements and is made up of a cover page, analytical results, and a copy of the original chain-of-custody. If you have any questions concerning this report, please feel free to contact me.

Sincerely,

A handwritten signature in black ink that reads "Celey D. Keene". The signature is written in a cursive, flowing style.

Celey D. Keene

Lab Director/Quality Manager



PHONE (575) 393-2326 • 101 E. MARLAND • HOBBS, NM 88240

Analytical Results For:

BBC International, Inc.
 Cliff Brunson
 P.O. Box 805
 Hobbs NM, 88241
 Fax To: (575) 397-0397

Received:	11/12/2020	Sampling Date:	11/11/2020
Reported:	11/13/2020	Sampling Type:	Soil
Project Name:	LENGTH CC 6-7 FED COM #22H	Sampling Condition:	Cool & Intact
Project Number:	(4- 2 - 19)	Sample Received By:	Celey D. Keene
Project Location:	OXY - EDDY CO NM		

Sample ID: BOTTOM 1 @ 4' (H003016-01)

BTEX 8021B		mg/kg		Analyzed By: MS					
Analyte	Result	Reporting Limit	Analyzed	Method Blank	BS	% Recovery	True Value QC	RPD	Qualifier
Benzene*	<0.050	0.050	11/13/2020	ND	2.03	101	2.00	3.04	
Toluene*	<0.050	0.050	11/13/2020	ND	1.95	97.7	2.00	2.63	
Ethylbenzene*	<0.050	0.050	11/13/2020	ND	2.05	103	2.00	2.75	
Total Xylenes*	<0.150	0.150	11/13/2020	ND	5.86	97.6	6.00	2.61	
Total BTEX	<0.300	0.300	11/13/2020	ND					

Surrogate: 4-Bromofluorobenzene (PID) 101 % 73.3-129

Chloride, SM4500Cl-B		mg/kg		Analyzed By: AC					
Analyte	Result	Reporting Limit	Analyzed	Method Blank	BS	% Recovery	True Value QC	RPD	Qualifier
Chloride	48.0	16.0	11/13/2020	ND	432	108	400	0.00	

TPH 8015M		mg/kg		Analyzed By: MS					
Analyte	Result	Reporting Limit	Analyzed	Method Blank	BS	% Recovery	True Value QC	RPD	Qualifier
GRO C6-C10*	<10.0	10.0	11/13/2020	ND	241	120	200	10.2	
DRO >C10-C28*	<10.0	10.0	11/13/2020	ND	240	120	200	15.8	
EXT DRO >C28-C36	<10.0	10.0	11/13/2020	ND					

Surrogate: 1-Chlorooctane 79.5 % 44.3-144

Surrogate: 1-Chlorooctadecane 74.8 % 42.2-156

Cardinal Laboratories

*=Accredited Analyte

PLEASE NOTE: Liability and Damages. Cardinal's liability and client's exclusive remedy for any claim arising, whether based in contract or tort, shall be limited to the amount paid by client for analyses. All claims, including those for negligence and any other cause whatsoever shall be deemed waived unless made in writing and received by Cardinal within thirty (30) days after completion of the applicable service. In no event shall Cardinal be liable for incidental or consequential damages, including, without limitation, business interruptions, loss of use, or loss of profits incurred by client, its subsidiaries, affiliates or successors arising out of or related to the performance of the services hereunder by Cardinal, regardless of whether such claim is based upon any of the above stated reasons or otherwise. Results relate only to the samples identified above. This report shall not be reproduced except in full with written approval of Cardinal Laboratories.

Celey D. Keene, Lab Director/Quality Manager



PHONE (575) 393-2326 • 101 E. MARLAND • HOBBS, NM 88240

Analytical Results For:

BBC International, Inc.
 Cliff Brunson
 P.O. Box 805
 Hobbs NM, 88241
 Fax To: (575) 397-0397

Received:	11/12/2020	Sampling Date:	11/11/2020
Reported:	11/13/2020	Sampling Type:	Soil
Project Name:	LENGTH CC 6-7 FED COM #22H	Sampling Condition:	Cool & Intact
Project Number:	(4- 2 - 19)	Sample Received By:	Celey D. Keene
Project Location:	OXY - EDDY CO NM		

Sample ID: BOTTOM 2 @ 4' (H003016-02)

BTEx 8021B		mg/kg		Analyzed By: MS						
Analyte	Result	Reporting Limit	Analyzed	Method Blank	BS	% Recovery	True Value QC	RPD	Qualifier	
Benzene*	<0.050	0.050	11/13/2020	ND	2.03	101	2.00	3.04		
Toluene*	<0.050	0.050	11/13/2020	ND	1.95	97.7	2.00	2.63		
Ethylbenzene*	<0.050	0.050	11/13/2020	ND	2.05	103	2.00	2.75		
Total Xylenes*	<0.150	0.150	11/13/2020	ND	5.86	97.6	6.00	2.61		
Total BTEx	<0.300	0.300	11/13/2020	ND						

Surrogate: 4-Bromofluorobenzene (PID) 102 % 73.3-129

Chloride, SM4500CI-B		mg/kg		Analyzed By: AC						
Analyte	Result	Reporting Limit	Analyzed	Method Blank	BS	% Recovery	True Value QC	RPD	Qualifier	
Chloride	48.0	16.0	11/13/2020	ND	432	108	400	0.00		

TPH 8015M		mg/kg		Analyzed By: MS					
Analyte	Result	Reporting Limit	Analyzed	Method Blank	BS	% Recovery	True Value QC	RPD	Qualifier
GRO C6-C10*	<10.0	10.0	11/13/2020	ND	241	120	200	10.2	
DRO >C10-C28*	<10.0	10.0	11/13/2020	ND	240	120	200	15.8	
EXT DRO >C28-C36	<10.0	10.0	11/13/2020	ND					

Surrogate: 1-Chlorooctane 81.3 % 44.3-144

Surrogate: 1-Chlorooctadecane 76.2 % 42.2-156

Cardinal Laboratories

*=Accredited Analyte

PLEASE NOTE: Liability and Damages. Cardinal's liability and client's exclusive remedy for any claim arising, whether based in contract or tort, shall be limited to the amount paid by client for analyses. All claims, including those for negligence and any other cause whatsoever shall be deemed waived unless made in writing and received by Cardinal within thirty (30) days after completion of the applicable service. In no event shall Cardinal be liable for incidental or consequential damages, including, without limitation, business interruptions, loss of use, or loss of profits incurred by client, its subsidiaries, affiliates or successors arising out of or related to the performance of the services hereunder by Cardinal, regardless of whether such claim is based upon any of the above stated reasons or otherwise. Results relate only to the samples identified above. This report shall not be reproduced except in full with written approval of Cardinal Laboratories.

Celey D. Keene, Lab Director/Quality Manager



PHONE (575) 393-2326 • 101 E. MARLAND • HOBBS, NM 88240

Analytical Results For:

BBC International, Inc.
 Cliff Brunson
 P.O. Box 805
 Hobbs NM, 88241
 Fax To: (575) 397-0397

Received:	11/12/2020	Sampling Date:	11/11/2020
Reported:	11/13/2020	Sampling Type:	Soil
Project Name:	LENGTH CC 6-7 FED COM #22H	Sampling Condition:	Cool & Intact
Project Number:	(4- 2 - 19)	Sample Received By:	Celey D. Keene
Project Location:	OXY - EDDY CO NM		

Sample ID: BOTTOM 3 @ 4' (H003016-03)

BTEx 8021B		mg/kg		Analyzed By: MS						
Analyte	Result	Reporting Limit	Analyzed	Method Blank	BS	% Recovery	True Value QC	RPD	Qualifier	
Benzene*	<0.050	0.050	11/13/2020	ND	2.03	101	2.00	3.04		
Toluene*	<0.050	0.050	11/13/2020	ND	1.95	97.7	2.00	2.63		
Ethylbenzene*	<0.050	0.050	11/13/2020	ND	2.05	103	2.00	2.75		
Total Xylenes*	<0.150	0.150	11/13/2020	ND	5.86	97.6	6.00	2.61		
Total BTEx	<0.300	0.300	11/13/2020	ND						

Surrogate: 4-Bromofluorobenzene (PID) 102 % 73.3-129

Chloride, SM4500CI-B		mg/kg		Analyzed By: AC						
Analyte	Result	Reporting Limit	Analyzed	Method Blank	BS	% Recovery	True Value QC	RPD	Qualifier	
Chloride	48.0	16.0	11/13/2020	ND	432	108	400	0.00		

TPH 8015M		mg/kg		Analyzed By: MS					
Analyte	Result	Reporting Limit	Analyzed	Method Blank	BS	% Recovery	True Value QC	RPD	Qualifier
GRO C6-C10*	<10.0	10.0	11/13/2020	ND	241	120	200	10.2	
DRO >C10-C28*	<10.0	10.0	11/13/2020	ND	240	120	200	15.8	
EXT DRO >C28-C36	<10.0	10.0	11/13/2020	ND					

Surrogate: 1-Chlorooctane 81.9 % 44.3-144

Surrogate: 1-Chlorooctadecane 77.0 % 42.2-156

Cardinal Laboratories

*=Accredited Analyte

PLEASE NOTE: Liability and Damages. Cardinal's liability and client's exclusive remedy for any claim arising, whether based in contract or tort, shall be limited to the amount paid by client for analyses. All claims, including those for negligence and any other cause whatsoever shall be deemed waived unless made in writing and received by Cardinal within thirty (30) days after completion of the applicable service. In no event shall Cardinal be liable for incidental or consequential damages, including, without limitation, business interruptions, loss of use, or loss of profits incurred by client, its subsidiaries, affiliates or successors arising out of or related to the performance of the services hereunder by Cardinal, regardless of whether such claim is based upon any of the above stated reasons or otherwise. Results relate only to the samples identified above. This report shall not be reproduced except in full with written approval of Cardinal Laboratories.

Celey D. Keene, Lab Director/Quality Manager



PHONE (575) 393-2326 ° 101 E. MARLAND ° HOBBS, NM 88240

Notes and Definitions

ND	Analyte NOT DETECTED at or above the reporting limit
RPD	Relative Percent Difference
**	Samples not received at proper temperature of 6°C or below.
***	Insufficient time to reach temperature.
-	Chloride by SM4500Cl-B does not require samples be received at or below 6°C Samples reported on an as received basis (wet) unless otherwise noted on report

Cardinal Laboratories

*=Accredited Analyte

PLEASE NOTE: Liability and Damages. Cardinal's liability and client's exclusive remedy for any claim arising, whether based in contract or tort, shall be limited to the amount paid by client for analyses. All claims, including those for negligence and any other cause whatsoever shall be deemed waived unless made in writing and received by Cardinal within thirty (30) days after completion of the applicable service. In no event shall Cardinal be liable for incidental or consequential damages, including, without limitation, business interruptions, loss of use, or loss of profits incurred by client, its subsidiaries, affiliates or successors arising out of or related to the performance of the services hereunder by Cardinal, regardless of whether such claim is based upon any of the above stated reasons or otherwise. Results relate only to the samples identified above. This report shall not be reproduced except in full with written approval of Cardinal Laboratories.

A handwritten signature in cursive script, appearing to read "Celey D. Keene", written in black ink.

Celey D. Keene, Lab Director/Quality Manager



CARDINAL LABORATORIES
101 East Marland, Hobbs, NM 88240
(505) 393-2326 FAX (505) 393-2476

CHAIN-OF-CUSTODY AND ANALYSIS REQUEST

Company Name: BBC International, Inc.				BILL TO				ANALYSIS REQUEST																			
Project Manager: Cliff Brunson				P.O. #:																							
Address: P.O. Box 805				Company: OXY																							
City: Hobbs		State: NM Zip: 88241		Attn: WADE																							
Phone #: 575-397-6388		Fax #: 575-397-0397		Address:																							
Project #:		Project Owner: Oxy		City:																							
Project Name: Length CC 6-7 Fed Com 22H (4-2-19)				State: Zip:																							
Project Location: EDDY COUNTY, NM				Phone #:																							
Sampler Name: Roger Hernandez				Fax #:																							
FOR LAB USE ONLY				MATRIX		PRESERV.		SAMPLING																			
Lab I.D.	Sample I.D.	(GRAB OR C/COMP.	# CONTAINERS	GROUNDWATER	WASTEWATER	SOIL	OIL	SLUDGE	OTHER :	ACID/BASE:	ICE / COOL	OTHER :	DATE	TIME	CL	BTEX	TPH EXT										
H003016+	Bottom 1 @ 4'	6	1			✓					✓		11/11/20	1:00 PM	✓	✓	✓										
J2	Bottom 2 @ 4'	6	1			✓					✓		11/11/20	1:25 PM	✓	✓	✓										
W3	Bottom 3 @ 4'	6	1			✓					✓		11/11/20	1:40PM	✓	✓	✓										

PLEASE NOTE: Liability and Damages. Cardinal's liability and client's exclusive remedy for any claim arising whether based in contract or tort, shall be limited to the amount paid by the client for the analyses. All claims, including those for negligence and any other cause whatsoever shall be deemed waived unless made in writing and received by Cardinal within 30 days after completion of the applicable service. In no event shall Cardinal be liable for incidental or consequential damages, including without limitation, business interruptions, loss of use, or loss of profits incurred by client, its subsidiaries, affiliates or successors arising out of or related to the performance of services hereunder by Cardinal, regardless of whether such claim is based upon any of the above stated reasons or otherwise.

Relinquished By:	Date: 11/12/20	Received By:	Phone Result: <input type="checkbox"/> Yes <input type="checkbox"/> No	Add'l Phone #:
Relinquished By:	Date:	Received By:	Fax Result: <input type="checkbox"/> Yes <input type="checkbox"/> No	Add'l Fax #:
Time: 5:00p			REMARKS: Rush	
Delivered By: (Circle One)	Sample Condition	CHECKED BY: (Initials)		
Sampler - UPS - Bus - Other: 2.0c	Cool <input checked="" type="checkbox"/> Yes <input type="checkbox"/> No Intact <input checked="" type="checkbox"/> Yes <input type="checkbox"/> No	CDL #113		

† Cardinal cannot accept verbal changes. Please fax written changes to 505-393-2476



PHONE (575) 393-2326 ° 101 E. MARLAND ° HOBBS, NM 88240

November 25, 2020

Cliff Brunson

BBC International, Inc.

P.O. Box 805

Hobbs, NM 88241

RE: LENGTH CC 6-7 FED COM #22H

Enclosed are the results of analyses for samples received by the laboratory on 11/23/20 16:25.

Cardinal Laboratories is accredited through Texas NELAP under certificate number T104704398-20-13. Accreditation applies to drinking water, non-potable water and solid and chemical materials. All accredited analytes are denoted by an asterisk (*). For a complete list of accredited analytes and matrices visit the TCEQ website at www.tceq.texas.gov/field/qa/lab_accred_certif.html.

Cardinal Laboratories is accredited through the State of Colorado Department of Public Health and Environment for:

Method EPA 552.2	Haloacetic Acids (HAA-5)
Method EPA 524.2	Total Trihalomethanes (TTHM)
Method EPA 524.4	Regulated VOCs (V1, V2, V3)

Accreditation applies to public drinking water matrices.

This report meets NELAP requirements and is made up of a cover page, analytical results, and a copy of the original chain-of-custody. If you have any questions concerning this report, please feel free to contact me.

Sincerely,

A handwritten signature in black ink, appearing to read "Mike Snyder".

Mike Snyder For Celey D. Keene

Lab Director/Quality Manager



PHONE (575) 393-2326 ° 101 E. MARLAND ° HOBBS, NM 88240

Analytical Results For:

BBC International, Inc.
 Cliff Brunson
 P.O. Box 805
 Hobbs NM, 88241
 Fax To: (575) 397-0397

Received:	11/23/2020	Sampling Date:	11/18/2020
Reported:	11/25/2020	Sampling Type:	Soil
Project Name:	LENGTH CC 6-7 FED COM #22H	Sampling Condition:	Cool & Intact
Project Number:	(4- 2 - 19)	Sample Received By:	Tamara Oldaker
Project Location:	OXY - EDDY CO NM		

Sample ID: BS 1 (H003101-01)

BTEX 8021B		mg/kg		Analyzed By: ms					
Analyte	Result	Reporting Limit	Analyzed	Method Blank	BS	% Recovery	True Value QC	RPD	Qualifier
Benzene*	<0.050	0.050	11/24/2020	ND	1.75	87.4	2.00	4.37	
Toluene*	<0.050	0.050	11/24/2020	ND	1.82	90.8	2.00	2.99	
Ethylbenzene*	<0.050	0.050	11/24/2020	ND	1.82	91.1	2.00	2.81	
Total Xylenes*	<0.150	0.150	11/24/2020	ND	5.70	95.0	6.00	3.69	
Total BTEX	<0.300	0.300	11/24/2020	ND					

Surrogate: 4-Bromofluorobenzene (PID) 108 % 73.3-129

Chloride, SM4500Cl-B		mg/kg		Analyzed By: AC						
Analyte	Result	Reporting Limit	Analyzed	Method Blank	BS	% Recovery	True Value QC	RPD	Qualifier	
Chloride	560	16.0	11/24/2020	ND	432	108	400	0.00		

TPH 8015M		mg/kg		Analyzed By: MS					
Analyte	Result	Reporting Limit	Analyzed	Method Blank	BS	% Recovery	True Value QC	RPD	Qualifier
GRO C6-C10*	<10.0	10.0	11/24/2020	ND	205	102	200	0.822	
DRO >C10-C28*	<10.0	10.0	11/24/2020	ND	201	100	200	0.112	
EXT DRO >C28-C36	<10.0	10.0	11/24/2020	ND					

Surrogate: 1-Chlorooctane 90.0 % 44.3-144

Surrogate: 1-Chlorooctadecane 90.4 % 42.2-156

Cardinal Laboratories

*=Accredited Analyte

PLEASE NOTE: Liability and Damages. Cardinal's liability and client's exclusive remedy for any claim arising, whether based in contract or tort, shall be limited to the amount paid by client for analyses. All claims, including those for negligence and any other cause whatsoever shall be deemed waived unless made in writing and received by Cardinal within thirty (30) days after completion of the applicable service. In no event shall Cardinal be liable for incidental or consequential damages, including, without limitation, business interruptions, loss of use, or loss of profits incurred by client, its subsidiaries, affiliates or successors arising out of or related to the performance of the services hereunder by Cardinal, regardless of whether such claim is based upon any of the above stated reasons or otherwise. Results relate only to the samples identified above. This report shall not be reproduced except in full with written approval of Cardinal Laboratories.

Mike Snyder For Celey D. Keene, Lab Director/Quality Manager



PHONE (575) 393-2326 ° 101 E. MARLAND ° HOBBS, NM 88240

Analytical Results For:

BBC International, Inc.
 Cliff Brunson
 P.O. Box 805
 Hobbs NM, 88241
 Fax To: (575) 397-0397

Received:	11/23/2020	Sampling Date:	11/18/2020
Reported:	11/25/2020	Sampling Type:	Soil
Project Name:	LENGTH CC 6-7 FED COM #22H	Sampling Condition:	Cool & Intact
Project Number:	(4- 2 - 19)	Sample Received By:	Tamara Oldaker
Project Location:	OXY - EDDY CO NM		

Sample ID: BS 2 (H003101-02)

BTEX 8021B		mg/kg		Analyzed By: ms						
Analyte	Result	Reporting Limit	Analyzed	Method Blank	BS	% Recovery	True Value QC	RPD	Qualifier	
Benzene*	<0.050	0.050	11/24/2020	ND	1.75	87.4	2.00	4.37		
Toluene*	<0.050	0.050	11/24/2020	ND	1.82	90.8	2.00	2.99		
Ethylbenzene*	<0.050	0.050	11/24/2020	ND	1.82	91.1	2.00	2.81		
Total Xylenes*	<0.150	0.150	11/24/2020	ND	5.70	95.0	6.00	3.69		
Total BTEX	<0.300	0.300	11/24/2020	ND						

Surrogate: 4-Bromofluorobenzene (PID) 104 % 73.3-129

Chloride, SM4500Cl-B		mg/kg		Analyzed By: AC						
Analyte	Result	Reporting Limit	Analyzed	Method Blank	BS	% Recovery	True Value QC	RPD	Qualifier	
Chloride	432	16.0	11/24/2020	ND	432	108	400	0.00		

TPH 8015M		mg/kg		Analyzed By: MS					
Analyte	Result	Reporting Limit	Analyzed	Method Blank	BS	% Recovery	True Value QC	RPD	Qualifier
GRO C6-C10*	<10.0	10.0	11/24/2020	ND	205	102	200	0.822	
DRO >C10-C28*	<10.0	10.0	11/24/2020	ND	201	100	200	0.112	
EXT DRO >C28-C36	<10.0	10.0	11/24/2020	ND					

Surrogate: 1-Chlorooctane 86.7 % 44.3-144

Surrogate: 1-Chlorooctadecane 84.3 % 42.2-156

Cardinal Laboratories

*=Accredited Analyte

PLEASE NOTE: Liability and Damages. Cardinal's liability and client's exclusive remedy for any claim arising, whether based in contract or tort, shall be limited to the amount paid by client for analyses. All claims, including those for negligence and any other cause whatsoever shall be deemed waived unless made in writing and received by Cardinal within thirty (30) days after completion of the applicable service. In no event shall Cardinal be liable for incidental or consequential damages, including, without limitation, business interruptions, loss of use, or loss of profits incurred by client, its subsidiaries, affiliates or successors arising out of or related to the performance of the services hereunder by Cardinal, regardless of whether such claim is based upon any of the above stated reasons or otherwise. Results relate only to the samples identified above. This report shall not be reproduced except in full with written approval of Cardinal Laboratories.

Mike Snyder For Celey D. Keene, Lab Director/Quality Manager



PHONE (575) 393-2326 ° 101 E. MARLAND ° HOBBS, NM 88240

Analytical Results For:

BBC International, Inc.
 Cliff Brunson
 P.O. Box 805
 Hobbs NM, 88241
 Fax To: (575) 397-0397

Received:	11/23/2020	Sampling Date:	11/18/2020
Reported:	11/25/2020	Sampling Type:	Soil
Project Name:	LENGTH CC 6-7 FED COM #22H	Sampling Condition:	Cool & Intact
Project Number:	(4- 2 - 19)	Sample Received By:	Tamara Oldaker
Project Location:	OXY - EDDY CO NM		

Sample ID: BS 3 (H003101-03)

BTEX 8021B		mg/kg		Analyzed By: ms						
Analyte	Result	Reporting Limit	Analyzed	Method Blank	BS	% Recovery	True Value QC	RPD	Qualifier	
Benzene*	<0.050	0.050	11/24/2020	ND	1.75	87.4	2.00	4.37		
Toluene*	<0.050	0.050	11/24/2020	ND	1.82	90.8	2.00	2.99		
Ethylbenzene*	<0.050	0.050	11/24/2020	ND	1.82	91.1	2.00	2.81		
Total Xylenes*	<0.150	0.150	11/24/2020	ND	5.70	95.0	6.00	3.69		
Total BTEX	<0.300	0.300	11/24/2020	ND						

Surrogate: 4-Bromofluorobenzene (PID) 105 % 73.3-129

Chloride, SM4500Cl-B		mg/kg		Analyzed By: AC						
Analyte	Result	Reporting Limit	Analyzed	Method Blank	BS	% Recovery	True Value QC	RPD	Qualifier	
Chloride	190	16.0	11/24/2020	ND	432	108	400	0.00		

TPH 8015M		mg/kg		Analyzed By: MS					
Analyte	Result	Reporting Limit	Analyzed	Method Blank	BS	% Recovery	True Value QC	RPD	Qualifier
GRO C6-C10*	<10.0	10.0	11/24/2020	ND	205	102	200	0.822	
DRO >C10-C28*	<10.0	10.0	11/24/2020	ND	201	100	200	0.112	
EXT DRO >C28-C36	<10.0	10.0	11/24/2020	ND					

Surrogate: 1-Chlorooctane 83.9 % 44.3-144

Surrogate: 1-Chlorooctadecane 82.4 % 42.2-156

Cardinal Laboratories

*=Accredited Analyte

PLEASE NOTE: Liability and Damages. Cardinal's liability and client's exclusive remedy for any claim arising, whether based in contract or tort, shall be limited to the amount paid by client for analyses. All claims, including those for negligence and any other cause whatsoever shall be deemed waived unless made in writing and received by Cardinal within thirty (30) days after completion of the applicable service. In no event shall Cardinal be liable for incidental or consequential damages, including, without limitation, business interruptions, loss of use, or loss of profits incurred by client, its subsidiaries, affiliates or successors arising out of or related to the performance of the services hereunder by Cardinal, regardless of whether such claim is based upon any of the above stated reasons or otherwise. Results relate only to the samples identified above. This report shall not be reproduced except in full with written approval of Cardinal Laboratories.

Mike Snyder For Celey D. Keene, Lab Director/Quality Manager



PHONE (575) 393-2326 ° 101 E. MARLAND ° HOBBS, NM 88240

Analytical Results For:

BBC International, Inc.
 Cliff Brunson
 P.O. Box 805
 Hobbs NM, 88241
 Fax To: (575) 397-0397

Received:	11/23/2020	Sampling Date:	11/18/2020
Reported:	11/25/2020	Sampling Type:	Soil
Project Name:	LENGTH CC 6-7 FED COM #22H	Sampling Condition:	Cool & Intact
Project Number:	(4- 2 - 19)	Sample Received By:	Tamara Oldaker
Project Location:	OXY - EDDY CO NM		

Sample ID: BS 4 (H003101-04)

BTEx 8021B		mg/kg		Analyzed By: ms						
Analyte	Result	Reporting Limit	Analyzed	Method Blank	BS	% Recovery	True Value QC	RPD	Qualifier	
Benzene*	<0.050	0.050	11/24/2020	ND	1.75	87.4	2.00	4.37		
Toluene*	<0.050	0.050	11/24/2020	ND	1.82	90.8	2.00	2.99		
Ethylbenzene*	<0.050	0.050	11/24/2020	ND	1.82	91.1	2.00	2.81		
Total Xylenes*	<0.150	0.150	11/24/2020	ND	5.70	95.0	6.00	3.69		
Total BTEx	<0.300	0.300	11/24/2020	ND						

Surrogate: 4-Bromofluorobenzene (PID) 105 % 73.3-129

Chloride, SM4500CI-B		mg/kg		Analyzed By: AC						
Analyte	Result	Reporting Limit	Analyzed	Method Blank	BS	% Recovery	True Value QC	RPD	Qualifier	
Chloride	160	16.0	11/24/2020	ND	432	108	400	0.00		

TPH 8015M		mg/kg		Analyzed By: MS					
Analyte	Result	Reporting Limit	Analyzed	Method Blank	BS	% Recovery	True Value QC	RPD	Qualifier
GRO C6-C10*	<10.0	10.0	11/24/2020	ND	205	102	200	0.822	
DRO >C10-C28*	<10.0	10.0	11/24/2020	ND	201	100	200	0.112	
EXT DRO >C28-C36	<10.0	10.0	11/24/2020	ND					

Surrogate: 1-Chlorooctane 92.0 % 44.3-144

Surrogate: 1-Chlorooctadecane 88.5 % 42.2-156

Cardinal Laboratories

*=Accredited Analyte

PLEASE NOTE: Liability and Damages. Cardinal's liability and client's exclusive remedy for any claim arising, whether based in contract or tort, shall be limited to the amount paid by client for analyses. All claims, including those for negligence and any other cause whatsoever shall be deemed waived unless made in writing and received by Cardinal within thirty (30) days after completion of the applicable service. In no event shall Cardinal be liable for incidental or consequential damages, including, without limitation, business interruptions, loss of use, or loss of profits incurred by client, its subsidiaries, affiliates or successors arising out of or related to the performance of the services hereunder by Cardinal, regardless of whether such claim is based upon any of the above stated reasons or otherwise. Results relate only to the samples identified above. This report shall not be reproduced except in full with written approval of Cardinal Laboratories.

Mike Snyder For Celey D. Keene, Lab Director/Quality Manager



PHONE (575) 393-2326 ° 101 E. MARLAND ° HOBBS, NM 88240

Analytical Results For:

BBC International, Inc.
 Cliff Brunson
 P.O. Box 805
 Hobbs NM, 88241
 Fax To: (575) 397-0397

Received:	11/23/2020	Sampling Date:	11/18/2020
Reported:	11/25/2020	Sampling Type:	Soil
Project Name:	LENGTH CC 6-7 FED COM #22H	Sampling Condition:	Cool & Intact
Project Number:	(4- 2 - 19)	Sample Received By:	Tamara Oldaker
Project Location:	OXY - EDDY CO NM		

Sample ID: BS 5 (H003101-05)

BTEX 8021B		mg/kg		Analyzed By: ms						
Analyte	Result	Reporting Limit	Analyzed	Method Blank	BS	% Recovery	True Value QC	RPD	Qualifier	
Benzene*	<0.050	0.050	11/24/2020	ND	1.75	87.4	2.00	4.37		
Toluene*	<0.050	0.050	11/24/2020	ND	1.82	90.8	2.00	2.99		
Ethylbenzene*	<0.050	0.050	11/24/2020	ND	1.82	91.1	2.00	2.81		
Total Xylenes*	<0.150	0.150	11/24/2020	ND	5.70	95.0	6.00	3.69		
Total BTEX	<0.300	0.300	11/24/2020	ND						

Surrogate: 4-Bromofluorobenzene (PID) 105 % 73.3-129

Chloride, SM4500Cl-B		mg/kg		Analyzed By: AC						
Analyte	Result	Reporting Limit	Analyzed	Method Blank	BS	% Recovery	True Value QC	RPD	Qualifier	
Chloride	400	16.0	11/24/2020	ND	432	108	400	0.00		

TPH 8015M		mg/kg		Analyzed By: MS					
Analyte	Result	Reporting Limit	Analyzed	Method Blank	BS	% Recovery	True Value QC	RPD	Qualifier
GRO C6-C10*	<10.0	10.0	11/24/2020	ND	205	102	200	0.822	
DRO >C10-C28*	<10.0	10.0	11/24/2020	ND	201	100	200	0.112	
EXT DRO >C28-C36	<10.0	10.0	11/24/2020	ND					

Surrogate: 1-Chlorooctane 88.8 % 44.3-144

Surrogate: 1-Chlorooctadecane 87.6 % 42.2-156

Cardinal Laboratories

*=Accredited Analyte

PLEASE NOTE: Liability and Damages. Cardinal's liability and client's exclusive remedy for any claim arising, whether based in contract or tort, shall be limited to the amount paid by client for analyses. All claims, including those for negligence and any other cause whatsoever shall be deemed waived unless made in writing and received by Cardinal within thirty (30) days after completion of the applicable service. In no event shall Cardinal be liable for incidental or consequential damages, including, without limitation, business interruptions, loss of use, or loss of profits incurred by client, its subsidiaries, affiliates or successors arising out of or related to the performance of the services hereunder by Cardinal, regardless of whether such claim is based upon any of the above stated reasons or otherwise. Results relate only to the samples identified above. This report shall not be reproduced except in full with written approval of Cardinal Laboratories.

Mike Snyder For Celey D. Keene, Lab Director/Quality Manager



PHONE (575) 393-2326 ° 101 E. MARLAND ° HOBBS, NM 88240

Analytical Results For:

BBC International, Inc.
 Cliff Brunson
 P.O. Box 805
 Hobbs NM, 88241
 Fax To: (575) 397-0397

Received:	11/23/2020	Sampling Date:	11/18/2020
Reported:	11/25/2020	Sampling Type:	Soil
Project Name:	LENGTH CC 6-7 FED COM #22H	Sampling Condition:	Cool & Intact
Project Number:	(4- 2 - 19)	Sample Received By:	Tamara Oldaker
Project Location:	OXY - EDDY CO NM		

Sample ID: BS 6 (H003101-06)

BTEX 8021B		mg/kg		Analyzed By: ms						
Analyte	Result	Reporting Limit	Analyzed	Method Blank	BS	% Recovery	True Value QC	RPD	Qualifier	
Benzene*	<0.050	0.050	11/24/2020	ND	1.75	87.4	2.00	4.37		
Toluene*	<0.050	0.050	11/24/2020	ND	1.82	90.8	2.00	2.99		
Ethylbenzene*	<0.050	0.050	11/24/2020	ND	1.82	91.1	2.00	2.81		
Total Xylenes*	<0.150	0.150	11/24/2020	ND	5.70	95.0	6.00	3.69		
Total BTEX	<0.300	0.300	11/24/2020	ND						

Surrogate: 4-Bromofluorobenzene (PID) 104 % 73.3-129

Chloride, SM4500Cl-B		mg/kg		Analyzed By: AC						
Analyte	Result	Reporting Limit	Analyzed	Method Blank	BS	% Recovery	True Value QC	RPD	Qualifier	
Chloride	192	16.0	11/24/2020	ND	432	108	400	0.00		

TPH 8015M		mg/kg		Analyzed By: MS					
Analyte	Result	Reporting Limit	Analyzed	Method Blank	BS	% Recovery	True Value QC	RPD	Qualifier
GRO C6-C10*	<10.0	10.0	11/24/2020	ND	205	102	200	0.822	
DRO >C10-C28*	<10.0	10.0	11/24/2020	ND	201	100	200	0.112	
EXT DRO >C28-C36	<10.0	10.0	11/24/2020	ND					

Surrogate: 1-Chlorooctane 105 % 44.3-144

Surrogate: 1-Chlorooctadecane 107 % 42.2-156

Cardinal Laboratories

*=Accredited Analyte

PLEASE NOTE: Liability and Damages. Cardinal's liability and client's exclusive remedy for any claim arising, whether based in contract or tort, shall be limited to the amount paid by client for analyses. All claims, including those for negligence and any other cause whatsoever shall be deemed waived unless made in writing and received by Cardinal within thirty (30) days after completion of the applicable service. In no event shall Cardinal be liable for incidental or consequential damages, including, without limitation, business interruptions, loss of use, or loss of profits incurred by client, its subsidiaries, affiliates or successors arising out of or related to the performance of the services hereunder by Cardinal, regardless of whether such claim is based upon any of the above stated reasons or otherwise. Results relate only to the samples identified above. This report shall not be reproduced except in full with written approval of Cardinal Laboratories.

Mike Snyder For Celey D. Keene, Lab Director/Quality Manager



PHONE (575) 393-2326 ° 101 E. MARLAND ° HOBBS, NM 88240

Analytical Results For:

BBC International, Inc.
 Cliff Brunson
 P.O. Box 805
 Hobbs NM, 88241
 Fax To: (575) 397-0397

Received:	11/23/2020	Sampling Date:	11/18/2020
Reported:	11/25/2020	Sampling Type:	Soil
Project Name:	LENGTH CC 6-7 FED COM #22H	Sampling Condition:	Cool & Intact
Project Number:	(4- 2 - 19)	Sample Received By:	Tamara Oldaker
Project Location:	OXY - EDDY CO NM		

Sample ID: BS 7 (H003101-07)

BTEx 8021B		mg/kg		Analyzed By: ms						
Analyte	Result	Reporting Limit	Analyzed	Method Blank	BS	% Recovery	True Value QC	RPD	Qualifier	
Benzene*	<0.050	0.050	11/24/2020	ND	1.75	87.4	2.00	4.37		
Toluene*	<0.050	0.050	11/24/2020	ND	1.82	90.8	2.00	2.99		
Ethylbenzene*	<0.050	0.050	11/24/2020	ND	1.82	91.1	2.00	2.81		
Total Xylenes*	<0.150	0.150	11/24/2020	ND	5.70	95.0	6.00	3.69		
Total BTEX	<0.300	0.300	11/24/2020	ND						

Surrogate: 4-Bromofluorobenzene (PID) 105 % 73.3-129

Chloride, SM4500Cl-B		mg/kg		Analyzed By: AC						
Analyte	Result	Reporting Limit	Analyzed	Method Blank	BS	% Recovery	True Value QC	RPD	Qualifier	
Chloride	224	16.0	11/24/2020	ND	432	108	400	0.00		

TPH 8015M		mg/kg		Analyzed By: MS					
Analyte	Result	Reporting Limit	Analyzed	Method Blank	BS	% Recovery	True Value QC	RPD	Qualifier
GRO C6-C10*	<10.0	10.0	11/24/2020	ND	205	102	200	0.822	
DRO >C10-C28*	<10.0	10.0	11/24/2020	ND	201	100	200	0.112	
EXT DRO >C28-C36	<10.0	10.0	11/24/2020	ND					

Surrogate: 1-Chlorooctane 80.4 % 44.3-144

Surrogate: 1-Chlorooctadecane 77.7 % 42.2-156

Cardinal Laboratories

*=Accredited Analyte

PLEASE NOTE: Liability and Damages. Cardinal's liability and client's exclusive remedy for any claim arising, whether based in contract or tort, shall be limited to the amount paid by client for analyses. All claims, including those for negligence and any other cause whatsoever shall be deemed waived unless made in writing and received by Cardinal within thirty (30) days after completion of the applicable service. In no event shall Cardinal be liable for incidental or consequential damages, including, without limitation, business interruptions, loss of use, or loss of profits incurred by client, its subsidiaries, affiliates or successors arising out of or related to the performance of the services hereunder by Cardinal, regardless of whether such claim is based upon any of the above stated reasons or otherwise. Results relate only to the samples identified above. This report shall not be reproduced except in full with written approval of Cardinal Laboratories.

Mike Snyder For Celey D. Keene, Lab Director/Quality Manager



PHONE (575) 393-2326 ° 101 E. MARLAND ° HOBBS, NM 88240

Analytical Results For:

BBC International, Inc.
 Cliff Brunson
 P.O. Box 805
 Hobbs NM, 88241
 Fax To: (575) 397-0397

Received:	11/23/2020	Sampling Date:	11/18/2020
Reported:	11/25/2020	Sampling Type:	Soil
Project Name:	LENGTH CC 6-7 FED COM #22H	Sampling Condition:	Cool & Intact
Project Number:	(4- 2 - 19)	Sample Received By:	Tamara Oldaker
Project Location:	OXY - EDDY CO NM		

Sample ID: BS 8 (H003101-08)

BTEx 8021B		mg/kg		Analyzed By: ms						
Analyte	Result	Reporting Limit	Analyzed	Method Blank	BS	% Recovery	True Value QC	RPD	Qualifier	
Benzene*	<0.050	0.050	11/24/2020	ND	1.75	87.4	2.00	4.37		
Toluene*	<0.050	0.050	11/24/2020	ND	1.82	90.8	2.00	2.99		
Ethylbenzene*	<0.050	0.050	11/24/2020	ND	1.82	91.1	2.00	2.81		
Total Xylenes*	<0.150	0.150	11/24/2020	ND	5.70	95.0	6.00	3.69		
Total BTEX	<0.300	0.300	11/24/2020	ND						

Surrogate: 4-Bromofluorobenzene (PID) 104 % 73.3-129

Chloride, SM4500Cl-B		mg/kg		Analyzed By: AC						
Analyte	Result	Reporting Limit	Analyzed	Method Blank	BS	% Recovery	True Value QC	RPD	Qualifier	
Chloride	320	16.0	11/24/2020	ND	432	108	400	0.00		

TPH 8015M		mg/kg		Analyzed By: MS					
Analyte	Result	Reporting Limit	Analyzed	Method Blank	BS	% Recovery	True Value QC	RPD	Qualifier
GRO C6-C10*	<10.0	10.0	11/24/2020	ND	205	102	200	0.822	
DRO >C10-C28*	<10.0	10.0	11/24/2020	ND	201	100	200	0.112	
EXT DRO >C28-C36	<10.0	10.0	11/24/2020	ND					

Surrogate: 1-Chlorooctane 82.5 % 44.3-144

Surrogate: 1-Chlorooctadecane 83.5 % 42.2-156

Cardinal Laboratories

*=Accredited Analyte

PLEASE NOTE: Liability and Damages. Cardinal's liability and client's exclusive remedy for any claim arising, whether based in contract or tort, shall be limited to the amount paid by client for analyses. All claims, including those for negligence and any other cause whatsoever shall be deemed waived unless made in writing and received by Cardinal within thirty (30) days after completion of the applicable service. In no event shall Cardinal be liable for incidental or consequential damages, including, without limitation, business interruptions, loss of use, or loss of profits incurred by client, its subsidiaries, affiliates or successors arising out of or related to the performance of the services hereunder by Cardinal, regardless of whether such claim is based upon any of the above stated reasons or otherwise. Results relate only to the samples identified above. This report shall not be reproduced except in full with written approval of Cardinal Laboratories.

Mike Snyder For Celey D. Keene, Lab Director/Quality Manager



PHONE (575) 393-2326 ° 101 E. MARLAND ° HOBBS, NM 88240

Analytical Results For:

BBC International, Inc.
 Cliff Brunson
 P.O. Box 805
 Hobbs NM, 88241
 Fax To: (575) 397-0397

Received:	11/23/2020	Sampling Date:	11/18/2020
Reported:	11/25/2020	Sampling Type:	Soil
Project Name:	LENGTH CC 6-7 FED COM #22H	Sampling Condition:	Cool & Intact
Project Number:	(4- 2 - 19)	Sample Received By:	Tamara Oldaker
Project Location:	OXY - EDDY CO NM		

Sample ID: BS 9 (H003101-09)

BTEx 8021B		mg/kg		Analyzed By: ms						
Analyte	Result	Reporting Limit	Analyzed	Method Blank	BS	% Recovery	True Value QC	RPD	Qualifier	
Benzene*	<0.050	0.050	11/24/2020	ND	1.75	87.4	2.00	4.37		
Toluene*	<0.050	0.050	11/24/2020	ND	1.82	90.8	2.00	2.99		
Ethylbenzene*	<0.050	0.050	11/24/2020	ND	1.82	91.1	2.00	2.81		
Total Xylenes*	<0.150	0.150	11/24/2020	ND	5.70	95.0	6.00	3.69		
Total BTEX	<0.300	0.300	11/24/2020	ND						

Surrogate: 4-Bromofluorobenzene (PID) 105 % 73.3-129

Chloride, SM4500Cl-B		mg/kg		Analyzed By: AC						
Analyte	Result	Reporting Limit	Analyzed	Method Blank	BS	% Recovery	True Value QC	RPD	Qualifier	
Chloride	304	16.0	11/24/2020	ND	432	108	400	0.00		

TPH 8015M		mg/kg		Analyzed By: MS					
Analyte	Result	Reporting Limit	Analyzed	Method Blank	BS	% Recovery	True Value QC	RPD	Qualifier
GRO C6-C10*	<10.0	10.0	11/24/2020	ND	205	102	200	0.822	
DRO >C10-C28*	20.8	10.0	11/24/2020	ND	201	100	200	0.112	
EXT DRO >C28-C36	<10.0	10.0	11/24/2020	ND					

Surrogate: 1-Chlorooctane 81.6 % 44.3-144

Surrogate: 1-Chlorooctadecane 78.7 % 42.2-156

Cardinal Laboratories

*=Accredited Analyte

PLEASE NOTE: Liability and Damages. Cardinal's liability and client's exclusive remedy for any claim arising, whether based in contract or tort, shall be limited to the amount paid by client for analyses. All claims, including those for negligence and any other cause whatsoever shall be deemed waived unless made in writing and received by Cardinal within thirty (30) days after completion of the applicable service. In no event shall Cardinal be liable for incidental or consequential damages, including, without limitation, business interruptions, loss of use, or loss of profits incurred by client, its subsidiaries, affiliates or successors arising out of or related to the performance of the services hereunder by Cardinal, regardless of whether such claim is based upon any of the above stated reasons or otherwise. Results relate only to the samples identified above. This report shall not be reproduced except in full with written approval of Cardinal Laboratories.

Mike Snyder For Celey D. Keene, Lab Director/Quality Manager



PHONE (575) 393-2326 ° 101 E. MARLAND ° HOBBS, NM 88240

Analytical Results For:

BBC International, Inc.
 Cliff Brunson
 P.O. Box 805
 Hobbs NM, 88241
 Fax To: (575) 397-0397

Received:	11/23/2020	Sampling Date:	11/18/2020
Reported:	11/25/2020	Sampling Type:	Soil
Project Name:	LENGTH CC 6-7 FED COM #22H	Sampling Condition:	Cool & Intact
Project Number:	(4- 2 - 19)	Sample Received By:	Tamara Oldaker
Project Location:	OXY - EDDY CO NM		

Sample ID: BS 10 (H003101-10)

BTEx 8021B		mg/kg		Analyzed By: ms						
Analyte	Result	Reporting Limit	Analyzed	Method Blank	BS	% Recovery	True Value QC	RPD	Qualifier	
Benzene*	<0.050	0.050	11/24/2020	ND	1.75	87.4	2.00	4.37		
Toluene*	<0.050	0.050	11/24/2020	ND	1.82	90.8	2.00	2.99		
Ethylbenzene*	<0.050	0.050	11/24/2020	ND	1.82	91.1	2.00	2.81		
Total Xylenes*	<0.150	0.150	11/24/2020	ND	5.70	95.0	6.00	3.69		
Total BTEx	<0.300	0.300	11/24/2020	ND						

Surrogate: 4-Bromofluorobenzene (PID) 103 % 73.3-129

Chloride, SM4500CI-B		mg/kg		Analyzed By: AC						
Analyte	Result	Reporting Limit	Analyzed	Method Blank	BS	% Recovery	True Value QC	RPD	Qualifier	
Chloride	384	16.0	11/24/2020	ND	432	108	400	0.00		

TPH 8015M		mg/kg		Analyzed By: MS					
Analyte	Result	Reporting Limit	Analyzed	Method Blank	BS	% Recovery	True Value QC	RPD	Qualifier
GRO C6-C10*	<10.0	10.0	11/24/2020	ND	205	102	200	0.822	
DRO >C10-C28*	17.2	10.0	11/24/2020	ND	201	100	200	0.112	
EXT DRO >C28-C36	<10.0	10.0	11/24/2020	ND					

Surrogate: 1-Chlorooctane 73.7 % 44.3-144

Surrogate: 1-Chlorooctadecane 72.0 % 42.2-156

Cardinal Laboratories

*=Accredited Analyte

PLEASE NOTE: Liability and Damages. Cardinal's liability and client's exclusive remedy for any claim arising, whether based in contract or tort, shall be limited to the amount paid by client for analyses. All claims, including those for negligence and any other cause whatsoever shall be deemed waived unless made in writing and received by Cardinal within thirty (30) days after completion of the applicable service. In no event shall Cardinal be liable for incidental or consequential damages, including, without limitation, business interruptions, loss of use, or loss of profits incurred by client, its subsidiaries, affiliates or successors arising out of or related to the performance of the services hereunder by Cardinal, regardless of whether such claim is based upon any of the above stated reasons or otherwise. Results relate only to the samples identified above. This report shall not be reproduced except in full with written approval of Cardinal Laboratories.

Mike Snyder For Celey D. Keene, Lab Director/Quality Manager



PHONE (575) 393-2326 ° 101 E. MARLAND ° HOBBS, NM 88240

Analytical Results For:

BBC International, Inc.
 Cliff Brunson
 P.O. Box 805
 Hobbs NM, 88241
 Fax To: (575) 397-0397

Received:	11/23/2020	Sampling Date:	11/18/2020
Reported:	11/25/2020	Sampling Type:	Soil
Project Name:	LENGTH CC 6-7 FED COM #22H	Sampling Condition:	Cool & Intact
Project Number:	(4- 2 - 19)	Sample Received By:	Tamara Oldaker
Project Location:	OXY - EDDY CO NM		

Sample ID: BS 11 (H003101-11)

BTEX 8021B		mg/kg		Analyzed By: ms						
Analyte	Result	Reporting Limit	Analyzed	Method Blank	BS	% Recovery	True Value QC	RPD	Qualifier	
Benzene*	<0.050	0.050	11/24/2020	ND	1.75	87.4	2.00	4.37		
Toluene*	<0.050	0.050	11/24/2020	ND	1.82	90.8	2.00	2.99		
Ethylbenzene*	<0.050	0.050	11/24/2020	ND	1.82	91.1	2.00	2.81		
Total Xylenes*	<0.150	0.150	11/24/2020	ND	5.70	95.0	6.00	3.69		
Total BTEX	<0.300	0.300	11/24/2020	ND						

Surrogate: 4-Bromofluorobenzene (PID) 104 % 73.3-129

Chloride, SM4500Cl-B		mg/kg		Analyzed By: AC						
Analyte	Result	Reporting Limit	Analyzed	Method Blank	BS	% Recovery	True Value QC	RPD	Qualifier	
Chloride	592	16.0	11/24/2020	ND	432	108	400	0.00		

TPH 8015M		mg/kg		Analyzed By: MS					
Analyte	Result	Reporting Limit	Analyzed	Method Blank	BS	% Recovery	True Value QC	RPD	Qualifier
GRO C6-C10*	<10.0	10.0	11/24/2020	ND	205	102	200	0.822	
DRO >C10-C28*	<10.0	10.0	11/24/2020	ND	201	100	200	0.112	
EXT DRO >C28-C36	<10.0	10.0	11/24/2020	ND					

Surrogate: 1-Chlorooctane 84.5 % 44.3-144

Surrogate: 1-Chlorooctadecane 83.5 % 42.2-156

Cardinal Laboratories

*=Accredited Analyte

PLEASE NOTE: Liability and Damages. Cardinal's liability and client's exclusive remedy for any claim arising, whether based in contract or tort, shall be limited to the amount paid by client for analyses. All claims, including those for negligence and any other cause whatsoever shall be deemed waived unless made in writing and received by Cardinal within thirty (30) days after completion of the applicable service. In no event shall Cardinal be liable for incidental or consequential damages, including, without limitation, business interruptions, loss of use, or loss of profits incurred by client, its subsidiaries, affiliates or successors arising out of or related to the performance of the services hereunder by Cardinal, regardless of whether such claim is based upon any of the above stated reasons or otherwise. Results relate only to the samples identified above. This report shall not be reproduced except in full with written approval of Cardinal Laboratories.

Mike Snyder For Celey D. Keene, Lab Director/Quality Manager



PHONE (575) 393-2326 ° 101 E. MARLAND ° HOBBS, NM 88240

Analytical Results For:

BBC International, Inc.
 Cliff Brunson
 P.O. Box 805
 Hobbs NM, 88241
 Fax To: (575) 397-0397

Received:	11/23/2020	Sampling Date:	11/19/2020
Reported:	11/25/2020	Sampling Type:	Soil
Project Name:	LENGTH CC 6-7 FED COM #22H	Sampling Condition:	Cool & Intact
Project Number:	(4- 2 - 19)	Sample Received By:	Tamara Oldaker
Project Location:	OXY - EDDY CO NM		

Sample ID: BS 12 (H003101-12)

BTEx 8021B		mg/kg		Analyzed By: ms						
Analyte	Result	Reporting Limit	Analyzed	Method Blank	BS	% Recovery	True Value QC	RPD	Qualifier	
Benzene*	<0.050	0.050	11/24/2020	ND	1.75	87.4	2.00	4.37		
Toluene*	<0.050	0.050	11/24/2020	ND	1.82	90.8	2.00	2.99		
Ethylbenzene*	<0.050	0.050	11/24/2020	ND	1.82	91.1	2.00	2.81		
Total Xylenes*	<0.150	0.150	11/24/2020	ND	5.70	95.0	6.00	3.69		
Total BTEX	<0.300	0.300	11/24/2020	ND						

Surrogate: 4-Bromofluorobenzene (PID) 105 % 73.3-129

Chloride, SM4500Cl-B		mg/kg		Analyzed By: AC						
Analyte	Result	Reporting Limit	Analyzed	Method Blank	BS	% Recovery	True Value QC	RPD	Qualifier	
Chloride	752	16.0	11/24/2020	ND	432	108	400	0.00		

TPH 8015M		mg/kg		Analyzed By: MS					
Analyte	Result	Reporting Limit	Analyzed	Method Blank	BS	% Recovery	True Value QC	RPD	Qualifier
GRO C6-C10*	<10.0	10.0	11/24/2020	ND	205	102	200	0.822	
DRO >C10-C28*	<10.0	10.0	11/24/2020	ND	201	100	200	0.112	
EXT DRO >C28-C36	<10.0	10.0	11/24/2020	ND					

Surrogate: 1-Chlorooctane 82.8 % 44.3-144

Surrogate: 1-Chlorooctadecane 80.3 % 42.2-156

Cardinal Laboratories

*=Accredited Analyte

PLEASE NOTE: Liability and Damages. Cardinal's liability and client's exclusive remedy for any claim arising, whether based in contract or tort, shall be limited to the amount paid by client for analyses. All claims, including those for negligence and any other cause whatsoever shall be deemed waived unless made in writing and received by Cardinal within thirty (30) days after completion of the applicable service. In no event shall Cardinal be liable for incidental or consequential damages, including, without limitation, business interruptions, loss of use, or loss of profits incurred by client, its subsidiaries, affiliates or successors arising out of or related to the performance of the services hereunder by Cardinal, regardless of whether such claim is based upon any of the above stated reasons or otherwise. Results relate only to the samples identified above. This report shall not be reproduced except in full with written approval of Cardinal Laboratories.

Mike Snyder For Celey D. Keene, Lab Director/Quality Manager



PHONE (575) 393-2326 ° 101 E. MARLAND ° HOBBS, NM 88240

Analytical Results For:

BBC International, Inc.
 Cliff Brunson
 P.O. Box 805
 Hobbs NM, 88241
 Fax To: (575) 397-0397

Received:	11/23/2020	Sampling Date:	11/19/2020
Reported:	11/25/2020	Sampling Type:	Soil
Project Name:	LENGTH CC 6-7 FED COM #22H	Sampling Condition:	Cool & Intact
Project Number:	(4- 2 - 19)	Sample Received By:	Tamara Oldaker
Project Location:	OXY - EDDY CO NM		

Sample ID: BS 13 (H003101-13)

BTEx 8021B		mg/kg		Analyzed By: ms						
Analyte	Result	Reporting Limit	Analyzed	Method Blank	BS	% Recovery	True Value QC	RPD	Qualifier	
Benzene*	<0.050	0.050	11/24/2020	ND	1.75	87.4	2.00	4.37		
Toluene*	<0.050	0.050	11/24/2020	ND	1.82	90.8	2.00	2.99		
Ethylbenzene*	<0.050	0.050	11/24/2020	ND	1.82	91.1	2.00	2.81		
Total Xylenes*	<0.150	0.150	11/24/2020	ND	5.70	95.0	6.00	3.69		
Total BTEx	<0.300	0.300	11/24/2020	ND						

Surrogate: 4-Bromofluorobenzene (PID) 103 % 73.3-129

Chloride, SM4500CI-B		mg/kg		Analyzed By: AC						
Analyte	Result	Reporting Limit	Analyzed	Method Blank	BS	% Recovery	True Value QC	RPD	Qualifier	
Chloride	592	16.0	11/24/2020	ND	432	108	400	0.00		

TPH 8015M		mg/kg		Analyzed By: MS					
Analyte	Result	Reporting Limit	Analyzed	Method Blank	BS	% Recovery	True Value QC	RPD	Qualifier
GRO C6-C10*	<10.0	10.0	11/24/2020	ND	205	102	200	0.822	
DRO >C10-C28*	<10.0	10.0	11/24/2020	ND	201	100	200	0.112	
EXT DRO >C28-C36	<10.0	10.0	11/24/2020	ND					

Surrogate: 1-Chlorooctane 74.7 % 44.3-144

Surrogate: 1-Chlorooctadecane 71.8 % 42.2-156

Cardinal Laboratories

*=Accredited Analyte

PLEASE NOTE: Liability and Damages. Cardinal's liability and client's exclusive remedy for any claim arising, whether based in contract or tort, shall be limited to the amount paid by client for analyses. All claims, including those for negligence and any other cause whatsoever shall be deemed waived unless made in writing and received by Cardinal within thirty (30) days after completion of the applicable service. In no event shall Cardinal be liable for incidental or consequential damages, including, without limitation, business interruptions, loss of use, or loss of profits incurred by client, its subsidiaries, affiliates or successors arising out of or related to the performance of the services hereunder by Cardinal, regardless of whether such claim is based upon any of the above stated reasons or otherwise. Results relate only to the samples identified above. This report shall not be reproduced except in full with written approval of Cardinal Laboratories.

Mike Snyder For Celey D. Keene, Lab Director/Quality Manager



PHONE (575) 393-2326 ° 101 E. MARLAND ° HOBBS, NM 88240

Analytical Results For:

BBC International, Inc.
 Cliff Brunson
 P.O. Box 805
 Hobbs NM, 88241
 Fax To: (575) 397-0397

Received:	11/23/2020	Sampling Date:	11/19/2020
Reported:	11/25/2020	Sampling Type:	Soil
Project Name:	LENGTH CC 6-7 FED COM #22H	Sampling Condition:	Cool & Intact
Project Number:	(4- 2 - 19)	Sample Received By:	Tamara Oldaker
Project Location:	OXY - EDDY CO NM		

Sample ID: BS 14 (H003101-14)

BTEX 8021B		mg/kg		Analyzed By: ms						
Analyte	Result	Reporting Limit	Analyzed	Method Blank	BS	% Recovery	True Value QC	RPD	Qualifier	
Benzene*	<0.050	0.050	11/24/2020	ND	1.75	87.4	2.00	4.37		
Toluene*	<0.050	0.050	11/24/2020	ND	1.82	90.8	2.00	2.99		
Ethylbenzene*	<0.050	0.050	11/24/2020	ND	1.82	91.1	2.00	2.81		
Total Xylenes*	<0.150	0.150	11/24/2020	ND	5.70	95.0	6.00	3.69		
Total BTEX	<0.300	0.300	11/24/2020	ND						

Surrogate: 4-Bromofluorobenzene (PID) 103 % 73.3-129

Chloride, SM4500Cl-B		mg/kg		Analyzed By: AC						
Analyte	Result	Reporting Limit	Analyzed	Method Blank	BS	% Recovery	True Value QC	RPD	Qualifier	
Chloride	368	16.0	11/24/2020	ND	432	108	400	0.00		

TPH 8015M		mg/kg		Analyzed By: MS					
Analyte	Result	Reporting Limit	Analyzed	Method Blank	BS	% Recovery	True Value QC	RPD	Qualifier
GRO C6-C10*	<10.0	10.0	11/24/2020	ND	205	102	200	0.822	
DRO >C10-C28*	<10.0	10.0	11/24/2020	ND	201	100	200	0.112	
EXT DRO >C28-C36	<10.0	10.0	11/24/2020	ND					

Surrogate: 1-Chlorooctane 84.3 % 44.3-144

Surrogate: 1-Chlorooctadecane 81.2 % 42.2-156

Cardinal Laboratories

*=Accredited Analyte

PLEASE NOTE: Liability and Damages. Cardinal's liability and client's exclusive remedy for any claim arising, whether based in contract or tort, shall be limited to the amount paid by client for analyses. All claims, including those for negligence and any other cause whatsoever shall be deemed waived unless made in writing and received by Cardinal within thirty (30) days after completion of the applicable service. In no event shall Cardinal be liable for incidental or consequential damages, including, without limitation, business interruptions, loss of use, or loss of profits incurred by client, its subsidiaries, affiliates or successors arising out of or related to the performance of the services hereunder by Cardinal, regardless of whether such claim is based upon any of the above stated reasons or otherwise. Results relate only to the samples identified above. This report shall not be reproduced except in full with written approval of Cardinal Laboratories.

Mike Snyder For Celey D. Keene, Lab Director/Quality Manager



PHONE (575) 393-2326 ° 101 E. MARLAND ° HOBBS, NM 88240

Analytical Results For:

BBC International, Inc.
 Cliff Brunson
 P.O. Box 805
 Hobbs NM, 88241
 Fax To: (575) 397-0397

Received:	11/23/2020	Sampling Date:	11/19/2020
Reported:	11/25/2020	Sampling Type:	Soil
Project Name:	LENGTH CC 6-7 FED COM #22H	Sampling Condition:	Cool & Intact
Project Number:	(4- 2 - 19)	Sample Received By:	Tamara Oldaker
Project Location:	OXY - EDDY CO NM		

Sample ID: BS 15 (H003101-15)

BTEx 8021B		mg/kg		Analyzed By: ms						
Analyte	Result	Reporting Limit	Analyzed	Method Blank	BS	% Recovery	True Value QC	RPD	Qualifier	
Benzene*	<0.050	0.050	11/24/2020	ND	1.75	87.4	2.00	4.37		
Toluene*	<0.050	0.050	11/24/2020	ND	1.82	90.8	2.00	2.99		
Ethylbenzene*	<0.050	0.050	11/24/2020	ND	1.82	91.1	2.00	2.81		
Total Xylenes*	<0.150	0.150	11/24/2020	ND	5.70	95.0	6.00	3.69		
Total BTEX	<0.300	0.300	11/24/2020	ND						

Surrogate: 4-Bromofluorobenzene (PID) 103 % 73.3-129

Chloride, SM4500Cl-B		mg/kg		Analyzed By: AC						
Analyte	Result	Reporting Limit	Analyzed	Method Blank	BS	% Recovery	True Value QC	RPD	Qualifier	
Chloride	384	16.0	11/24/2020	ND	432	108	400	0.00		

TPH 8015M		mg/kg		Analyzed By: MS					
Analyte	Result	Reporting Limit	Analyzed	Method Blank	BS	% Recovery	True Value QC	RPD	Qualifier
GRO C6-C10*	<10.0	10.0	11/24/2020	ND	205	102	200	0.822	
DRO >C10-C28*	<10.0	10.0	11/24/2020	ND	201	100	200	0.112	
EXT DRO >C28-C36	<10.0	10.0	11/24/2020	ND					

Surrogate: 1-Chlorooctane 82.2 % 44.3-144

Surrogate: 1-Chlorooctadecane 81.6 % 42.2-156

Cardinal Laboratories

*=Accredited Analyte

PLEASE NOTE: Liability and Damages. Cardinal's liability and client's exclusive remedy for any claim arising, whether based in contract or tort, shall be limited to the amount paid by client for analyses. All claims, including those for negligence and any other cause whatsoever shall be deemed waived unless made in writing and received by Cardinal within thirty (30) days after completion of the applicable service. In no event shall Cardinal be liable for incidental or consequential damages, including, without limitation, business interruptions, loss of use, or loss of profits incurred by client, its subsidiaries, affiliates or successors arising out of or related to the performance of the services hereunder by Cardinal, regardless of whether such claim is based upon any of the above stated reasons or otherwise. Results relate only to the samples identified above. This report shall not be reproduced except in full with written approval of Cardinal Laboratories.

Mike Snyder For Celey D. Keene, Lab Director/Quality Manager



PHONE (575) 393-2326 ° 101 E. MARLAND ° HOBBS, NM 88240

Analytical Results For:

BBC International, Inc.
 Cliff Brunson
 P.O. Box 805
 Hobbs NM, 88241
 Fax To: (575) 397-0397

Received:	11/23/2020	Sampling Date:	11/19/2020
Reported:	11/25/2020	Sampling Type:	Soil
Project Name:	LENGTH CC 6-7 FED COM #22H	Sampling Condition:	Cool & Intact
Project Number:	(4- 2 - 19)	Sample Received By:	Tamara Oldaker
Project Location:	OXY - EDDY CO NM		

Sample ID: BS 16 (H003101-16)

BTEx 8021B		mg/kg		Analyzed By: MS						
Analyte	Result	Reporting Limit	Analyzed	Method Blank	BS	% Recovery	True Value QC	RPD	Qualifier	
Benzene*	<0.050	0.050	11/24/2020	ND	1.89	94.3	2.00	6.37		
Toluene*	<0.050	0.050	11/24/2020	ND	1.81	90.3	2.00	6.09		
Ethylbenzene*	<0.050	0.050	11/24/2020	ND	1.89	94.5	2.00	6.01		
Total Xylenes*	<0.150	0.150	11/24/2020	ND	5.43	90.5	6.00	5.70		
Total BTEX	<0.300	0.300	11/24/2020	ND						

Surrogate: 4-Bromofluorobenzene (PID) 100 % 73.3-129

Chloride, SM4500Cl-B		mg/kg		Analyzed By: AC						
Analyte	Result	Reporting Limit	Analyzed	Method Blank	BS	% Recovery	True Value QC	RPD	Qualifier	
Chloride	320	16.0	11/24/2020	ND	432	108	400	0.00		

TPH 8015M		mg/kg		Analyzed By: MS					
Analyte	Result	Reporting Limit	Analyzed	Method Blank	BS	% Recovery	True Value QC	RPD	Qualifier
GRO C6-C10*	<10.0	10.0	11/24/2020	ND	205	102	200	0.822	
DRO >C10-C28*	<10.0	10.0	11/24/2020	ND	201	100	200	0.112	
EXT DRO >C28-C36	<10.0	10.0	11/24/2020	ND					

Surrogate: 1-Chlorooctane 79.4 % 44.3-144

Surrogate: 1-Chlorooctadecane 79.4 % 42.2-156

Cardinal Laboratories

*=Accredited Analyte

PLEASE NOTE: Liability and Damages. Cardinal's liability and client's exclusive remedy for any claim arising, whether based in contract or tort, shall be limited to the amount paid by client for analyses. All claims, including those for negligence and any other cause whatsoever shall be deemed waived unless made in writing and received by Cardinal within thirty (30) days after completion of the applicable service. In no event shall Cardinal be liable for incidental or consequential damages, including, without limitation, business interruptions, loss of use, or loss of profits incurred by client, its subsidiaries, affiliates or successors arising out of or related to the performance of the services hereunder by Cardinal, regardless of whether such claim is based upon any of the above stated reasons or otherwise. Results relate only to the samples identified above. This report shall not be reproduced except in full with written approval of Cardinal Laboratories.

Mike Snyder For Celey D. Keene, Lab Director/Quality Manager



PHONE (575) 393-2326 ° 101 E. MARLAND ° HOBBS, NM 88240

Analytical Results For:

BBC International, Inc.
 Cliff Brunson
 P.O. Box 805
 Hobbs NM, 88241
 Fax To: (575) 397-0397

Received:	11/23/2020	Sampling Date:	11/19/2020
Reported:	11/25/2020	Sampling Type:	Soil
Project Name:	LENGTH CC 6-7 FED COM #22H	Sampling Condition:	Cool & Intact
Project Number:	(4- 2 - 19)	Sample Received By:	Tamara Oldaker
Project Location:	OXY - EDDY CO NM		

Sample ID: BS 17 (H003101-17)

BTX 8021B		mg/kg		Analyzed By: MS						
Analyte	Result	Reporting Limit	Analyzed	Method Blank	BS	% Recovery	True Value QC	RPD	Qualifier	
Benzene*	<0.050	0.050	11/24/2020	ND	1.89	94.3	2.00	6.37		
Toluene*	<0.050	0.050	11/24/2020	ND	1.81	90.3	2.00	6.09		
Ethylbenzene*	<0.050	0.050	11/24/2020	ND	1.89	94.5	2.00	6.01		
Total Xylenes*	<0.150	0.150	11/24/2020	ND	5.43	90.5	6.00	5.70		
Total BTX	<0.300	0.300	11/24/2020	ND						

Surrogate: 4-Bromofluorobenzene (PID) 97.3 % 73.3-129

Chloride, SM4500CI-B		mg/kg		Analyzed By: AC						
Analyte	Result	Reporting Limit	Analyzed	Method Blank	BS	% Recovery	True Value QC	RPD	Qualifier	
Chloride	464	16.0	11/24/2020	ND	432	108	400	0.00		

TPH 8015M		mg/kg		Analyzed By: MS					
Analyte	Result	Reporting Limit	Analyzed	Method Blank	BS	% Recovery	True Value QC	RPD	Qualifier
GRO C6-C10*	<10.0	10.0	11/24/2020	ND	205	102	200	0.822	
DRO >C10-C28*	<10.0	10.0	11/24/2020	ND	201	100	200	0.112	
EXT DRO >C28-C36	<10.0	10.0	11/24/2020	ND					

Surrogate: 1-Chlorooctane 81.8 % 44.3-144

Surrogate: 1-Chlorooctadecane 80.5 % 42.2-156

Cardinal Laboratories

*=Accredited Analyte

PLEASE NOTE: Liability and Damages. Cardinal's liability and client's exclusive remedy for any claim arising, whether based in contract or tort, shall be limited to the amount paid by client for analyses. All claims, including those for negligence and any other cause whatsoever shall be deemed waived unless made in writing and received by Cardinal within thirty (30) days after completion of the applicable service. In no event shall Cardinal be liable for incidental or consequential damages, including, without limitation, business interruptions, loss of use, or loss of profits incurred by client, its subsidiaries, affiliates or successors arising out of or related to the performance of the services hereunder by Cardinal, regardless of whether such claim is based upon any of the above stated reasons or otherwise. Results relate only to the samples identified above. This report shall not be reproduced except in full with written approval of Cardinal Laboratories.

Mike Snyder For Celey D. Keene, Lab Director/Quality Manager



PHONE (575) 393-2326 ° 101 E. MARLAND ° HOBBS, NM 88240

Analytical Results For:

BBC International, Inc.
 Cliff Brunson
 P.O. Box 805
 Hobbs NM, 88241
 Fax To: (575) 397-0397

Received:	11/23/2020	Sampling Date:	11/19/2020
Reported:	11/25/2020	Sampling Type:	Soil
Project Name:	LENGTH CC 6-7 FED COM #22H	Sampling Condition:	Cool & Intact
Project Number:	(4- 2 - 19)	Sample Received By:	Tamara Oldaker
Project Location:	OXY - EDDY CO NM		

Sample ID: BS 18 (H003101-18)

BTX 8021B		mg/kg		Analyzed By: MS						
Analyte	Result	Reporting Limit	Analyzed	Method Blank	BS	% Recovery	True Value QC	RPD	Qualifier	
Benzene*	<0.050	0.050	11/24/2020	ND	1.89	94.3	2.00	6.37		
Toluene*	<0.050	0.050	11/24/2020	ND	1.81	90.3	2.00	6.09		
Ethylbenzene*	<0.050	0.050	11/24/2020	ND	1.89	94.5	2.00	6.01		
Total Xylenes*	<0.150	0.150	11/24/2020	ND	5.43	90.5	6.00	5.70		
Total BTX	<0.300	0.300	11/24/2020	ND						

Surrogate: 4-Bromofluorobenzene (PID) 99.6 % 73.3-129

Chloride, SM4500Cl-B		mg/kg		Analyzed By: AC						
Analyte	Result	Reporting Limit	Analyzed	Method Blank	BS	% Recovery	True Value QC	RPD	Qualifier	
Chloride	352	16.0	11/24/2020	ND	432	108	400	0.00		

TPH 8015M		mg/kg		Analyzed By: MS					
Analyte	Result	Reporting Limit	Analyzed	Method Blank	BS	% Recovery	True Value QC	RPD	Qualifier
GRO C6-C10*	<10.0	10.0	11/24/2020	ND	205	102	200	0.822	
DRO >C10-C28*	<10.0	10.0	11/24/2020	ND	201	100	200	0.112	
EXT DRO >C28-C36	<10.0	10.0	11/24/2020	ND					

Surrogate: 1-Chlorooctane 82.2 % 44.3-144

Surrogate: 1-Chlorooctadecane 79.2 % 42.2-156

Cardinal Laboratories

*=Accredited Analyte

PLEASE NOTE: Liability and Damages. Cardinal's liability and client's exclusive remedy for any claim arising, whether based in contract or tort, shall be limited to the amount paid by client for analyses. All claims, including those for negligence and any other cause whatsoever shall be deemed waived unless made in writing and received by Cardinal within thirty (30) days after completion of the applicable service. In no event shall Cardinal be liable for incidental or consequential damages, including, without limitation, business interruptions, loss of use, or loss of profits incurred by client, its subsidiaries, affiliates or successors arising out of or related to the performance of the services hereunder by Cardinal, regardless of whether such claim is based upon any of the above stated reasons or otherwise. Results relate only to the samples identified above. This report shall not be reproduced except in full with written approval of Cardinal Laboratories.

Mike Snyder For Celey D. Keene, Lab Director/Quality Manager



PHONE (575) 393-2326 ° 101 E. MARLAND ° HOBBS, NM 88240

Analytical Results For:

BBC International, Inc.
 Cliff Brunson
 P.O. Box 805
 Hobbs NM, 88241
 Fax To: (575) 397-0397

Received:	11/23/2020	Sampling Date:	11/19/2020
Reported:	11/25/2020	Sampling Type:	Soil
Project Name:	LENGTH CC 6-7 FED COM #22H	Sampling Condition:	Cool & Intact
Project Number:	(4- 2 - 19)	Sample Received By:	Tamara Oldaker
Project Location:	OXY - EDDY CO NM		

Sample ID: BS 19 (H003101-19)

BTEx 8021B		mg/kg		Analyzed By: MS						
Analyte	Result	Reporting Limit	Analyzed	Method Blank	BS	% Recovery	True Value QC	RPD	Qualifier	
Benzene*	<0.050	0.050	11/24/2020	ND	1.89	94.3	2.00	6.37		
Toluene*	<0.050	0.050	11/24/2020	ND	1.81	90.3	2.00	6.09		
Ethylbenzene*	<0.050	0.050	11/24/2020	ND	1.89	94.5	2.00	6.01		
Total Xylenes*	<0.150	0.150	11/24/2020	ND	5.43	90.5	6.00	5.70		
Total BTEX	<0.300	0.300	11/24/2020	ND						

Surrogate: 4-Bromofluorobenzene (PID) 99.6 % 73.3-129

Chloride, SM4500CI-B		mg/kg		Analyzed By: AC						
Analyte	Result	Reporting Limit	Analyzed	Method Blank	BS	% Recovery	True Value QC	RPD	Qualifier	
Chloride	608	16.0	11/24/2020	ND	432	108	400	0.00		

TPH 8015M		mg/kg		Analyzed By: MS					
Analyte	Result	Reporting Limit	Analyzed	Method Blank	BS	% Recovery	True Value QC	RPD	Qualifier
GRO C6-C10*	<10.0	10.0	11/24/2020	ND	241	120	200	3.97	
DRO >C10-C28*	<10.0	10.0	11/24/2020	ND	246	123	200	2.96	
EXT DRO >C28-C36	<10.0	10.0	11/24/2020	ND					

Surrogate: 1-Chlorooctane 82.2 % 44.3-144

Surrogate: 1-Chlorooctadecane 79.3 % 42.2-156

Cardinal Laboratories

*=Accredited Analyte

PLEASE NOTE: Liability and Damages. Cardinal's liability and client's exclusive remedy for any claim arising, whether based in contract or tort, shall be limited to the amount paid by client for analyses. All claims, including those for negligence and any other cause whatsoever shall be deemed waived unless made in writing and received by Cardinal within thirty (30) days after completion of the applicable service. In no event shall Cardinal be liable for incidental or consequential damages, including, without limitation, business interruptions, loss of use, or loss of profits incurred by client, its subsidiaries, affiliates or successors arising out of or related to the performance of the services hereunder by Cardinal, regardless of whether such claim is based upon any of the above stated reasons or otherwise. Results relate only to the samples identified above. This report shall not be reproduced except in full with written approval of Cardinal Laboratories.

Mike Snyder For Celey D. Keene, Lab Director/Quality Manager



PHONE (575) 393-2326 ° 101 E. MARLAND ° HOBBS, NM 88240

Analytical Results For:

BBC International, Inc.
 Cliff Brunson
 P.O. Box 805
 Hobbs NM, 88241
 Fax To: (575) 397-0397

Received:	11/23/2020	Sampling Date:	11/19/2020
Reported:	11/25/2020	Sampling Type:	Soil
Project Name:	LENGTH CC 6-7 FED COM #22H	Sampling Condition:	Cool & Intact
Project Number:	(4- 2 - 19)	Sample Received By:	Tamara Oldaker
Project Location:	OXY - EDDY CO NM		

Sample ID: BS 20 (H003101-20)

BTX 8021B		mg/kg		Analyzed By: MS						
Analyte	Result	Reporting Limit	Analyzed	Method Blank	BS	% Recovery	True Value QC	RPD	Qualifier	
Benzene*	<0.050	0.050	11/24/2020	ND	1.89	94.3	2.00	6.37		
Toluene*	<0.050	0.050	11/24/2020	ND	1.81	90.3	2.00	6.09		
Ethylbenzene*	<0.050	0.050	11/24/2020	ND	1.89	94.5	2.00	6.01		
Total Xylenes*	<0.150	0.150	11/24/2020	ND	5.43	90.5	6.00	5.70		
Total BTX	<0.300	0.300	11/24/2020	ND						

Surrogate: 4-Bromofluorobenzene (PID) 100 % 73.3-129

Chloride, SM4500CI-B		mg/kg		Analyzed By: AC						
Analyte	Result	Reporting Limit	Analyzed	Method Blank	BS	% Recovery	True Value QC	RPD	Qualifier	
Chloride	336	16.0	11/24/2020	ND	432	108	400	0.00		

TPH 8015M		mg/kg		Analyzed By: MS					
Analyte	Result	Reporting Limit	Analyzed	Method Blank	BS	% Recovery	True Value QC	RPD	Qualifier
GRO C6-C10*	<10.0	10.0	11/24/2020	ND	241	120	200	3.97	
DRO >C10-C28*	<10.0	10.0	11/24/2020	ND	246	123	200	2.96	
EXT DRO >C28-C36	<10.0	10.0	11/24/2020	ND					

Surrogate: 1-Chlorooctane 80.6 % 44.3-144

Surrogate: 1-Chlorooctadecane 78.5 % 42.2-156

Cardinal Laboratories

*=Accredited Analyte

PLEASE NOTE: Liability and Damages. Cardinal's liability and client's exclusive remedy for any claim arising, whether based in contract or tort, shall be limited to the amount paid by client for analyses. All claims, including those for negligence and any other cause whatsoever shall be deemed waived unless made in writing and received by Cardinal within thirty (30) days after completion of the applicable service. In no event shall Cardinal be liable for incidental or consequential damages, including, without limitation, business interruptions, loss of use, or loss of profits incurred by client, its subsidiaries, affiliates or successors arising out of or related to the performance of the services hereunder by Cardinal, regardless of whether such claim is based upon any of the above stated reasons or otherwise. Results relate only to the samples identified above. This report shall not be reproduced except in full with written approval of Cardinal Laboratories.

Mike Snyder For Celey D. Keene, Lab Director/Quality Manager



PHONE (575) 393-2326 ° 101 E. MARLAND ° HOBBS, NM 88240

Analytical Results For:

BBC International, Inc.
 Cliff Brunson
 P.O. Box 805
 Hobbs NM, 88241
 Fax To: (575) 397-0397

Received:	11/23/2020	Sampling Date:	11/18/2020
Reported:	11/25/2020	Sampling Type:	Soil
Project Name:	LENGTH CC 6-7 FED COM #22H	Sampling Condition:	Cool & Intact
Project Number:	(4- 2 - 19)	Sample Received By:	Tamara Oldaker
Project Location:	OXY - EDDY CO NM		

Sample ID: BS 21 (H003101-21)

BTEx 8021B		mg/kg		Analyzed By: MS						
Analyte	Result	Reporting Limit	Analyzed	Method Blank	BS	% Recovery	True Value QC	RPD	Qualifier	
Benzene*	<0.050	0.050	11/24/2020	ND	1.89	94.3	2.00	6.37		
Toluene*	<0.050	0.050	11/24/2020	ND	1.81	90.3	2.00	6.09		
Ethylbenzene*	<0.050	0.050	11/24/2020	ND	1.89	94.5	2.00	6.01		
Total Xylenes*	<0.150	0.150	11/24/2020	ND	5.43	90.5	6.00	5.70		
Total BTEX	<0.300	0.300	11/24/2020	ND						

Surrogate: 4-Bromofluorobenzene (PID) 100 % 73.3-129

Chloride, SM4500Cl-B		mg/kg		Analyzed By: AC						
Analyte	Result	Reporting Limit	Analyzed	Method Blank	BS	% Recovery	True Value QC	RPD	Qualifier	
Chloride	288	16.0	11/24/2020	ND	400	100	400	3.92		

TPH 8015M		mg/kg		Analyzed By: MS					
Analyte	Result	Reporting Limit	Analyzed	Method Blank	BS	% Recovery	True Value QC	RPD	Qualifier
GRO C6-C10*	<10.0	10.0	11/24/2020	ND	213	107	200	1.60	
DRO >C10-C28*	<10.0	10.0	11/24/2020	ND	198	98.9	200	0.705	
EXT DRO >C28-C36	<10.0	10.0	11/24/2020	ND					

Surrogate: 1-Chlorooctane 77.5 % 44.3-144

Surrogate: 1-Chlorooctadecane 72.1 % 42.2-156

Cardinal Laboratories

*=Accredited Analyte

PLEASE NOTE: Liability and Damages. Cardinal's liability and client's exclusive remedy for any claim arising, whether based in contract or tort, shall be limited to the amount paid by client for analyses. All claims, including those for negligence and any other cause whatsoever shall be deemed waived unless made in writing and received by Cardinal within thirty (30) days after completion of the applicable service. In no event shall Cardinal be liable for incidental or consequential damages, including, without limitation, business interruptions, loss of use, or loss of profits incurred by client, its subsidiaries, affiliates or successors arising out of or related to the performance of the services hereunder by Cardinal, regardless of whether such claim is based upon any of the above stated reasons or otherwise. Results relate only to the samples identified above. This report shall not be reproduced except in full with written approval of Cardinal Laboratories.

Mike Snyder For Celey D. Keene, Lab Director/Quality Manager



PHONE (575) 393-2326 ° 101 E. MARLAND ° HOBBS, NM 88240

Analytical Results For:

BBC International, Inc.
 Cliff Brunson
 P.O. Box 805
 Hobbs NM, 88241
 Fax To: (575) 397-0397

Received:	11/23/2020	Sampling Date:	11/19/2020
Reported:	11/25/2020	Sampling Type:	Soil
Project Name:	LENGTH CC 6-7 FED COM #22H	Sampling Condition:	Cool & Intact
Project Number:	(4- 2 - 19)	Sample Received By:	Tamara Oldaker
Project Location:	OXY - EDDY CO NM		

Sample ID: BS 22 (H003101-22)

BTEx 8021B		mg/kg		Analyzed By: MS						
Analyte	Result	Reporting Limit	Analyzed	Method Blank	BS	% Recovery	True Value QC	RPD	Qualifier	
Benzene*	<0.050	0.050	11/24/2020	ND	1.89	94.3	2.00	6.37		
Toluene*	<0.050	0.050	11/24/2020	ND	1.81	90.3	2.00	6.09		
Ethylbenzene*	<0.050	0.050	11/24/2020	ND	1.89	94.5	2.00	6.01		
Total Xylenes*	<0.150	0.150	11/24/2020	ND	5.43	90.5	6.00	5.70		
Total BTEX	<0.300	0.300	11/24/2020	ND						

Surrogate: 4-Bromofluorobenzene (PID) 98.7 % 73.3-129

Chloride, SM4500Cl-B		mg/kg		Analyzed By: AC						
Analyte	Result	Reporting Limit	Analyzed	Method Blank	BS	% Recovery	True Value QC	RPD	Qualifier	
Chloride	224	16.0	11/24/2020	ND	400	100	400	3.92		

TPH 8015M		mg/kg		Analyzed By: MS					
Analyte	Result	Reporting Limit	Analyzed	Method Blank	BS	% Recovery	True Value QC	RPD	Qualifier
GRO C6-C10*	<10.0	10.0	11/24/2020	ND	213	107	200	1.60	
DRO >C10-C28*	<10.0	10.0	11/24/2020	ND	198	98.9	200	0.705	
EXT DRO >C28-C36	<10.0	10.0	11/24/2020	ND					

Surrogate: 1-Chlorooctane 73.8 % 44.3-144

Surrogate: 1-Chlorooctadecane 70.3 % 42.2-156

Cardinal Laboratories

*=Accredited Analyte

PLEASE NOTE: Liability and Damages. Cardinal's liability and client's exclusive remedy for any claim arising, whether based in contract or tort, shall be limited to the amount paid by client for analyses. All claims, including those for negligence and any other cause whatsoever shall be deemed waived unless made in writing and received by Cardinal within thirty (30) days after completion of the applicable service. In no event shall Cardinal be liable for incidental or consequential damages, including, without limitation, business interruptions, loss of use, or loss of profits incurred by client, its subsidiaries, affiliates or successors arising out of or related to the performance of the services hereunder by Cardinal, regardless of whether such claim is based upon any of the above stated reasons or otherwise. Results relate only to the samples identified above. This report shall not be reproduced except in full with written approval of Cardinal Laboratories.

Mike Snyder For Celey D. Keene, Lab Director/Quality Manager



PHONE (575) 393-2326 ° 101 E. MARLAND ° HOBBS, NM 88240

Analytical Results For:

BBC International, Inc.
 Cliff Brunson
 P.O. Box 805
 Hobbs NM, 88241
 Fax To: (575) 397-0397

Received:	11/23/2020	Sampling Date:	11/19/2020
Reported:	11/25/2020	Sampling Type:	Soil
Project Name:	LENGTH CC 6-7 FED COM #22H	Sampling Condition:	Cool & Intact
Project Number:	(4- 2 - 19)	Sample Received By:	Tamara Oldaker
Project Location:	OXY - EDDY CO NM		

Sample ID: BS 23 (H003101-23)

BTEx 8021B		mg/kg		Analyzed By: MS						
Analyte	Result	Reporting Limit	Analyzed	Method Blank	BS	% Recovery	True Value QC	RPD	Qualifier	
Benzene*	<0.050	0.050	11/24/2020	ND	1.89	94.3	2.00	6.37		
Toluene*	<0.050	0.050	11/24/2020	ND	1.81	90.3	2.00	6.09		
Ethylbenzene*	<0.050	0.050	11/24/2020	ND	1.89	94.5	2.00	6.01		
Total Xylenes*	<0.150	0.150	11/24/2020	ND	5.43	90.5	6.00	5.70		
Total BTEX	<0.300	0.300	11/24/2020	ND						

Surrogate: 4-Bromofluorobenzene (PID) 99.7 % 73.3-129

Chloride, SM4500Cl-B		mg/kg		Analyzed By: AC						
Analyte	Result	Reporting Limit	Analyzed	Method Blank	BS	% Recovery	True Value QC	RPD	Qualifier	
Chloride	624	16.0	11/24/2020	ND	400	100	400	3.92		

TPH 8015M		mg/kg		Analyzed By: MS					
Analyte	Result	Reporting Limit	Analyzed	Method Blank	BS	% Recovery	True Value QC	RPD	Qualifier
GRO C6-C10*	<10.0	10.0	11/24/2020	ND	213	107	200	1.60	
DRO >C10-C28*	<10.0	10.0	11/24/2020	ND	198	98.9	200	0.705	
EXT DRO >C28-C36	<10.0	10.0	11/24/2020	ND					

Surrogate: 1-Chlorooctane 65.0 % 44.3-144

Surrogate: 1-Chlorooctadecane 61.5 % 42.2-156

Cardinal Laboratories

*=Accredited Analyte

PLEASE NOTE: Liability and Damages. Cardinal's liability and client's exclusive remedy for any claim arising, whether based in contract or tort, shall be limited to the amount paid by client for analyses. All claims, including those for negligence and any other cause whatsoever shall be deemed waived unless made in writing and received by Cardinal within thirty (30) days after completion of the applicable service. In no event shall Cardinal be liable for incidental or consequential damages, including, without limitation, business interruptions, loss of use, or loss of profits incurred by client, its subsidiaries, affiliates or successors arising out of or related to the performance of the services hereunder by Cardinal, regardless of whether such claim is based upon any of the above stated reasons or otherwise. Results relate only to the samples identified above. This report shall not be reproduced except in full with written approval of Cardinal Laboratories.

Mike Snyder For Celey D. Keene, Lab Director/Quality Manager



PHONE (575) 393-2326 ° 101 E. MARLAND ° HOBBS, NM 88240

Analytical Results For:

BBC International, Inc.
 Cliff Brunson
 P.O. Box 805
 Hobbs NM, 88241
 Fax To: (575) 397-0397

Received:	11/23/2020	Sampling Date:	11/19/2020
Reported:	11/25/2020	Sampling Type:	Soil
Project Name:	LENGTH CC 6-7 FED COM #22H	Sampling Condition:	Cool & Intact
Project Number:	(4- 2 - 19)	Sample Received By:	Tamara Oldaker
Project Location:	OXY - EDDY CO NM		

Sample ID: BS 24 (H003101-24)

BTEx 8021B		mg/kg		Analyzed By: MS						
Analyte	Result	Reporting Limit	Analyzed	Method Blank	BS	% Recovery	True Value QC	RPD	Qualifier	
Benzene*	<0.050	0.050	11/24/2020	ND	1.89	94.3	2.00	6.37		
Toluene*	<0.050	0.050	11/24/2020	ND	1.81	90.3	2.00	6.09		
Ethylbenzene*	<0.050	0.050	11/24/2020	ND	1.89	94.5	2.00	6.01		
Total Xylenes*	<0.150	0.150	11/24/2020	ND	5.43	90.5	6.00	5.70		
Total BTEX	<0.300	0.300	11/24/2020	ND						

Surrogate: 4-Bromofluorobenzene (PID) 99.5 % 73.3-129

Chloride, SM4500Cl-B		mg/kg		Analyzed By: AC						
Analyte	Result	Reporting Limit	Analyzed	Method Blank	BS	% Recovery	True Value QC	RPD	Qualifier	
Chloride	704	16.0	11/24/2020	ND	400	100	400	3.92		

TPH 8015M		mg/kg		Analyzed By: MS					
Analyte	Result	Reporting Limit	Analyzed	Method Blank	BS	% Recovery	True Value QC	RPD	Qualifier
GRO C6-C10*	<10.0	10.0	11/24/2020	ND	213	107	200	1.60	
DRO >C10-C28*	<10.0	10.0	11/24/2020	ND	198	98.9	200	0.705	
EXT DRO >C28-C36	<10.0	10.0	11/24/2020	ND					

Surrogate: 1-Chlorooctane 69.5 % 44.3-144

Surrogate: 1-Chlorooctadecane 64.8 % 42.2-156

Cardinal Laboratories

*=Accredited Analyte

PLEASE NOTE: Liability and Damages. Cardinal's liability and client's exclusive remedy for any claim arising, whether based in contract or tort, shall be limited to the amount paid by client for analyses. All claims, including those for negligence and any other cause whatsoever shall be deemed waived unless made in writing and received by Cardinal within thirty (30) days after completion of the applicable service. In no event shall Cardinal be liable for incidental or consequential damages, including, without limitation, business interruptions, loss of use, or loss of profits incurred by client, its subsidiaries, affiliates or successors arising out of or related to the performance of the services hereunder by Cardinal, regardless of whether such claim is based upon any of the above stated reasons or otherwise. Results relate only to the samples identified above. This report shall not be reproduced except in full with written approval of Cardinal Laboratories.

Mike Snyder For Celey D. Keene, Lab Director/Quality Manager



PHONE (575) 393-2326 ° 101 E. MARLAND ° HOBBS, NM 88240

Analytical Results For:

BBC International, Inc.
 Cliff Brunson
 P.O. Box 805
 Hobbs NM, 88241
 Fax To: (575) 397-0397

Received:	11/23/2020	Sampling Date:	11/19/2020
Reported:	11/25/2020	Sampling Type:	Soil
Project Name:	LENGTH CC 6-7 FED COM #22H	Sampling Condition:	Cool & Intact
Project Number:	(4- 2 - 19)	Sample Received By:	Tamara Oldaker
Project Location:	OXY - EDDY CO NM		

Sample ID: BS 25 (H003101-25)

BTX 8021B		mg/kg		Analyzed By: MS					
Analyte	Result	Reporting Limit	Analyzed	Method Blank	BS	% Recovery	True Value QC	RPD	Qualifier
Benzene*	<0.050	0.050	11/24/2020	ND	1.89	94.3	2.00	6.37	
Toluene*	<0.050	0.050	11/24/2020	ND	1.81	90.3	2.00	6.09	
Ethylbenzene*	<0.050	0.050	11/24/2020	ND	1.89	94.5	2.00	6.01	
Total Xylenes*	<0.150	0.150	11/24/2020	ND	5.43	90.5	6.00	5.70	
Total BTX	<0.300	0.300	11/24/2020	ND					

Surrogate: 4-Bromofluorobenzene (PID) 100 % 73.3-129

Chloride, SM4500CI-B		mg/kg		Analyzed By: AC					
Analyte	Result	Reporting Limit	Analyzed	Method Blank	BS	% Recovery	True Value QC	RPD	Qualifier
Chloride	608	16.0	11/24/2020	ND	400	100	400	3.92	

TPH 8015M		mg/kg		Analyzed By: MS					
Analyte	Result	Reporting Limit	Analyzed	Method Blank	BS	% Recovery	True Value QC	RPD	Qualifier
GRO C6-C10*	<10.0	10.0	11/24/2020	ND	213	107	200	1.60	
DRO >C10-C28*	<10.0	10.0	11/24/2020	ND	198	98.9	200	0.705	
EXT DRO >C28-C36	<10.0	10.0	11/24/2020	ND					

Surrogate: 1-Chlorooctane 74.0 % 44.3-144

Surrogate: 1-Chlorooctadecane 70.0 % 42.2-156

Cardinal Laboratories

*=Accredited Analyte

PLEASE NOTE: Liability and Damages. Cardinal's liability and client's exclusive remedy for any claim arising, whether based in contract or tort, shall be limited to the amount paid by client for analyses. All claims, including those for negligence and any other cause whatsoever shall be deemed waived unless made in writing and received by Cardinal within thirty (30) days after completion of the applicable service. In no event shall Cardinal be liable for incidental or consequential damages, including, without limitation, business interruptions, loss of use, or loss of profits incurred by client, its subsidiaries, affiliates or successors arising out of or related to the performance of the services hereunder by Cardinal, regardless of whether such claim is based upon any of the above stated reasons or otherwise. Results relate only to the samples identified above. This report shall not be reproduced except in full with written approval of Cardinal Laboratories.

Mike Snyder For Celey D. Keene, Lab Director/Quality Manager



PHONE (575) 393-2326 ° 101 E. MARLAND ° HOBBS, NM 88240

Analytical Results For:

BBC International, Inc.
 Cliff Brunson
 P.O. Box 805
 Hobbs NM, 88241
 Fax To: (575) 397-0397

Received:	11/23/2020	Sampling Date:	11/19/2020
Reported:	11/25/2020	Sampling Type:	Soil
Project Name:	LENGTH CC 6-7 FED COM #22H	Sampling Condition:	Cool & Intact
Project Number:	(4- 2 - 19)	Sample Received By:	Tamara Oldaker
Project Location:	OXY - EDDY CO NM		

Sample ID: BS 26 (H003101-26)

BTX 8021B		mg/kg		Analyzed By: MS						
Analyte	Result	Reporting Limit	Analyzed	Method Blank	BS	% Recovery	True Value QC	RPD	Qualifier	
Benzene*	<0.050	0.050	11/24/2020	ND	1.89	94.3	2.00	6.37		
Toluene*	<0.050	0.050	11/24/2020	ND	1.81	90.3	2.00	6.09		
Ethylbenzene*	<0.050	0.050	11/24/2020	ND	1.89	94.5	2.00	6.01		
Total Xylenes*	<0.150	0.150	11/24/2020	ND	5.43	90.5	6.00	5.70		
Total BTX	<0.300	0.300	11/24/2020	ND						

Surrogate: 4-Bromofluorobenzene (PID) 100 % 73.3-129

Chloride, SM4500CI-B		mg/kg		Analyzed By: AC						
Analyte	Result	Reporting Limit	Analyzed	Method Blank	BS	% Recovery	True Value QC	RPD	Qualifier	
Chloride	864	16.0	11/24/2020	ND	400	100	400	3.92		

TPH 8015M		mg/kg		Analyzed By: MS					
Analyte	Result	Reporting Limit	Analyzed	Method Blank	BS	% Recovery	True Value QC	RPD	Qualifier
GRO C6-C10*	<10.0	10.0	11/24/2020	ND	213	107	200	1.60	
DRO >C10-C28*	<10.0	10.0	11/24/2020	ND	198	98.9	200	0.705	
EXT DRO >C28-C36	<10.0	10.0	11/24/2020	ND					

Surrogate: 1-Chlorooctane 65.9 % 44.3-144

Surrogate: 1-Chlorooctadecane 62.3 % 42.2-156

Cardinal Laboratories

*=Accredited Analyte

PLEASE NOTE: Liability and Damages. Cardinal's liability and client's exclusive remedy for any claim arising, whether based in contract or tort, shall be limited to the amount paid by client for analyses. All claims, including those for negligence and any other cause whatsoever shall be deemed waived unless made in writing and received by Cardinal within thirty (30) days after completion of the applicable service. In no event shall Cardinal be liable for incidental or consequential damages, including, without limitation, business interruptions, loss of use, or loss of profits incurred by client, its subsidiaries, affiliates or successors arising out of or related to the performance of the services hereunder by Cardinal, regardless of whether such claim is based upon any of the above stated reasons or otherwise. Results relate only to the samples identified above. This report shall not be reproduced except in full with written approval of Cardinal Laboratories.

Mike Snyder For Celey D. Keene, Lab Director/Quality Manager



PHONE (575) 393-2326 ° 101 E. MARLAND ° HOBBS, NM 88240

Analytical Results For:

BBC International, Inc.
 Cliff Brunson
 P.O. Box 805
 Hobbs NM, 88241
 Fax To: (575) 397-0397

Received:	11/23/2020	Sampling Date:	11/19/2020
Reported:	11/25/2020	Sampling Type:	Soil
Project Name:	LENGTH CC 6-7 FED COM #22H	Sampling Condition:	Cool & Intact
Project Number:	(4- 2 - 19)	Sample Received By:	Tamara Oldaker
Project Location:	OXY - EDDY CO NM		

Sample ID: BS 27 (H003101-27)

BTEx 8021B		mg/kg		Analyzed By: MS						
Analyte	Result	Reporting Limit	Analyzed	Method Blank	BS	% Recovery	True Value QC	RPD	Qualifier	
Benzene*	<0.050	0.050	11/24/2020	ND	1.89	94.3	2.00	6.37		
Toluene*	<0.050	0.050	11/24/2020	ND	1.81	90.3	2.00	6.09		
Ethylbenzene*	<0.050	0.050	11/24/2020	ND	1.89	94.5	2.00	6.01		
Total Xylenes*	<0.150	0.150	11/24/2020	ND	5.43	90.5	6.00	5.70		
Total BTEX	<0.300	0.300	11/24/2020	ND						

Surrogate: 4-Bromofluorobenzene (PID) 99.5 % 73.3-129

Chloride, SM4500Cl-B		mg/kg		Analyzed By: AC						
Analyte	Result	Reporting Limit	Analyzed	Method Blank	BS	% Recovery	True Value QC	RPD	Qualifier	
Chloride	784	16.0	11/24/2020	ND	400	100	400	3.92		

TPH 8015M		mg/kg		Analyzed By: MS					
Analyte	Result	Reporting Limit	Analyzed	Method Blank	BS	% Recovery	True Value QC	RPD	Qualifier
GRO C6-C10*	<10.0	10.0	11/24/2020	ND	213	107	200	1.60	
DRO >C10-C28*	<10.0	10.0	11/24/2020	ND	198	98.9	200	0.705	
EXT DRO >C28-C36	<10.0	10.0	11/24/2020	ND					

Surrogate: 1-Chlorooctane 72.7 % 44.3-144

Surrogate: 1-Chlorooctadecane 68.8 % 42.2-156

Cardinal Laboratories

*=Accredited Analyte

PLEASE NOTE: Liability and Damages. Cardinal's liability and client's exclusive remedy for any claim arising, whether based in contract or tort, shall be limited to the amount paid by client for analyses. All claims, including those for negligence and any other cause whatsoever shall be deemed waived unless made in writing and received by Cardinal within thirty (30) days after completion of the applicable service. In no event shall Cardinal be liable for incidental or consequential damages, including, without limitation, business interruptions, loss of use, or loss of profits incurred by client, its subsidiaries, affiliates or successors arising out of or related to the performance of the services hereunder by Cardinal, regardless of whether such claim is based upon any of the above stated reasons or otherwise. Results relate only to the samples identified above. This report shall not be reproduced except in full with written approval of Cardinal Laboratories.

Mike Snyder For Celey D. Keene, Lab Director/Quality Manager



PHONE (575) 393-2326 ° 101 E. MARLAND ° HOBBS, NM 88240

Analytical Results For:

BBC International, Inc.
 Cliff Brunson
 P.O. Box 805
 Hobbs NM, 88241
 Fax To: (575) 397-0397

Received:	11/23/2020	Sampling Date:	11/19/2020
Reported:	11/25/2020	Sampling Type:	Soil
Project Name:	LENGTH CC 6-7 FED COM #22H	Sampling Condition:	Cool & Intact
Project Number:	(4- 2 - 19)	Sample Received By:	Tamara Oldaker
Project Location:	OXY - EDDY CO NM		

Sample ID: BS 28 (H003101-28)

BTEx 8021B		mg/kg		Analyzed By: MS						
Analyte	Result	Reporting Limit	Analyzed	Method Blank	BS	% Recovery	True Value QC	RPD	Qualifier	
Benzene*	<0.050	0.050	11/24/2020	ND	1.89	94.3	2.00	6.37		
Toluene*	<0.050	0.050	11/24/2020	ND	1.81	90.3	2.00	6.09		
Ethylbenzene*	<0.050	0.050	11/24/2020	ND	1.89	94.5	2.00	6.01		
Total Xylenes*	<0.150	0.150	11/24/2020	ND	5.43	90.5	6.00	5.70		
Total BTEX	<0.300	0.300	11/24/2020	ND						

Surrogate: 4-Bromofluorobenzene (PID) 100 % 73.3-129

Chloride, SM4500Cl-B		mg/kg		Analyzed By: AC						
Analyte	Result	Reporting Limit	Analyzed	Method Blank	BS	% Recovery	True Value QC	RPD	Qualifier	
Chloride	816	16.0	11/24/2020	ND	400	100	400	3.92		

TPH 8015M		mg/kg		Analyzed By: MS					
Analyte	Result	Reporting Limit	Analyzed	Method Blank	BS	% Recovery	True Value QC	RPD	Qualifier
GRO C6-C10*	<10.0	10.0	11/24/2020	ND	213	107	200	1.60	
DRO >C10-C28*	<10.0	10.0	11/24/2020	ND	198	98.9	200	0.705	
EXT DRO >C28-C36	<10.0	10.0	11/24/2020	ND					

Surrogate: 1-Chlorooctane 75.5 % 44.3-144

Surrogate: 1-Chlorooctadecane 71.6 % 42.2-156

Cardinal Laboratories

*=Accredited Analyte

PLEASE NOTE: Liability and Damages. Cardinal's liability and client's exclusive remedy for any claim arising, whether based in contract or tort, shall be limited to the amount paid by client for analyses. All claims, including those for negligence and any other cause whatsoever shall be deemed waived unless made in writing and received by Cardinal within thirty (30) days after completion of the applicable service. In no event shall Cardinal be liable for incidental or consequential damages, including, without limitation, business interruptions, loss of use, or loss of profits incurred by client, its subsidiaries, affiliates or successors arising out of or related to the performance of the services hereunder by Cardinal, regardless of whether such claim is based upon any of the above stated reasons or otherwise. Results relate only to the samples identified above. This report shall not be reproduced except in full with written approval of Cardinal Laboratories.

Mike Snyder For Celey D. Keene, Lab Director/Quality Manager



PHONE (575) 393-2326 ° 101 E. MARLAND ° HOBBS, NM 88240

Analytical Results For:

BBC International, Inc.
 Cliff Brunson
 P.O. Box 805
 Hobbs NM, 88241
 Fax To: (575) 397-0397

Received:	11/23/2020	Sampling Date:	11/19/2020
Reported:	11/25/2020	Sampling Type:	Soil
Project Name:	LENGTH CC 6-7 FED COM #22H	Sampling Condition:	Cool & Intact
Project Number:	(4- 2 - 19)	Sample Received By:	Tamara Oldaker
Project Location:	OXY - EDDY CO NM		

Sample ID: BS 29 (H003101-29)

BTX 8021B		mg/kg		Analyzed By: MS						
Analyte	Result	Reporting Limit	Analyzed	Method Blank	BS	% Recovery	True Value QC	RPD	Qualifier	
Benzene*	<0.050	0.050	11/24/2020	ND	1.89	94.3	2.00	6.37		
Toluene*	<0.050	0.050	11/24/2020	ND	1.81	90.3	2.00	6.09		
Ethylbenzene*	<0.050	0.050	11/24/2020	ND	1.89	94.5	2.00	6.01		
Total Xylenes*	<0.150	0.150	11/24/2020	ND	5.43	90.5	6.00	5.70		
Total BTX	<0.300	0.300	11/24/2020	ND						

Surrogate: 4-Bromofluorobenzene (PID) 100 % 73.3-129

Chloride, SM4500CI-B		mg/kg		Analyzed By: AC						
Analyte	Result	Reporting Limit	Analyzed	Method Blank	BS	% Recovery	True Value QC	RPD	Qualifier	
Chloride	352	16.0	11/24/2020	ND	400	100	400	3.92		

TPH 8015M		mg/kg		Analyzed By: MS					
Analyte	Result	Reporting Limit	Analyzed	Method Blank	BS	% Recovery	True Value QC	RPD	Qualifier
GRO C6-C10*	<10.0	10.0	11/24/2020	ND	213	107	200	1.60	
DRO >C10-C28*	<10.0	10.0	11/24/2020	ND	198	98.9	200	0.705	
EXT DRO >C28-C36	<10.0	10.0	11/24/2020	ND					

Surrogate: 1-Chlorooctane 73.4 % 44.3-144

Surrogate: 1-Chlorooctadecane 71.4 % 42.2-156

Cardinal Laboratories

*=Accredited Analyte

PLEASE NOTE: Liability and Damages. Cardinal's liability and client's exclusive remedy for any claim arising, whether based in contract or tort, shall be limited to the amount paid by client for analyses. All claims, including those for negligence and any other cause whatsoever shall be deemed waived unless made in writing and received by Cardinal within thirty (30) days after completion of the applicable service. In no event shall Cardinal be liable for incidental or consequential damages, including, without limitation, business interruptions, loss of use, or loss of profits incurred by client, its subsidiaries, affiliates or successors arising out of or related to the performance of the services hereunder by Cardinal, regardless of whether such claim is based upon any of the above stated reasons or otherwise. Results relate only to the samples identified above. This report shall not be reproduced except in full with written approval of Cardinal Laboratories.

Mike Snyder For Celey D. Keene, Lab Director/Quality Manager



PHONE (575) 393-2326 ° 101 E. MARLAND ° HOBBS, NM 88240

Analytical Results For:

BBC International, Inc.
 Cliff Brunson
 P.O. Box 805
 Hobbs NM, 88241
 Fax To: (575) 397-0397

Received:	11/23/2020	Sampling Date:	11/19/2020
Reported:	11/25/2020	Sampling Type:	Soil
Project Name:	LENGTH CC 6-7 FED COM #22H	Sampling Condition:	Cool & Intact
Project Number:	(4- 2 - 19)	Sample Received By:	Tamara Oldaker
Project Location:	OXY - EDDY CO NM		

Sample ID: BS 30 (H003101-30)

BTX 8021B		mg/kg		Analyzed By: MS					
Analyte	Result	Reporting Limit	Analyzed	Method Blank	BS	% Recovery	True Value QC	RPD	Qualifier
Benzene*	<0.050	0.050	11/24/2020	ND	1.89	94.3	2.00	6.37	
Toluene*	<0.050	0.050	11/24/2020	ND	1.81	90.3	2.00	6.09	
Ethylbenzene*	<0.050	0.050	11/24/2020	ND	1.89	94.5	2.00	6.01	
Total Xylenes*	<0.150	0.150	11/24/2020	ND	5.43	90.5	6.00	5.70	
Total BTX	<0.300	0.300	11/24/2020	ND					

Surrogate: 4-Bromofluorobenzene (PID) 100 % 73.3-129

Chloride, SM4500CI-B		mg/kg		Analyzed By: AC						
Analyte	Result	Reporting Limit	Analyzed	Method Blank	BS	% Recovery	True Value QC	RPD	Qualifier	
Chloride	320	16.0	11/24/2020	ND	400	100	400	3.92		

TPH 8015M		mg/kg		Analyzed By: MS					
Analyte	Result	Reporting Limit	Analyzed	Method Blank	BS	% Recovery	True Value QC	RPD	Qualifier
GRO C6-C10*	<10.0	10.0	11/24/2020	ND	213	107	200	1.60	
DRO >C10-C28*	<10.0	10.0	11/24/2020	ND	198	98.9	200	0.705	
EXT DRO >C28-C36	<10.0	10.0	11/24/2020	ND					

Surrogate: 1-Chlorooctane 71.9 % 44.3-144

Surrogate: 1-Chlorooctadecane 67.8 % 42.2-156

Cardinal Laboratories

*=Accredited Analyte

PLEASE NOTE: Liability and Damages. Cardinal's liability and client's exclusive remedy for any claim arising, whether based in contract or tort, shall be limited to the amount paid by client for analyses. All claims, including those for negligence and any other cause whatsoever shall be deemed waived unless made in writing and received by Cardinal within thirty (30) days after completion of the applicable service. In no event shall Cardinal be liable for incidental or consequential damages, including, without limitation, business interruptions, loss of use, or loss of profits incurred by client, its subsidiaries, affiliates or successors arising out of or related to the performance of the services hereunder by Cardinal, regardless of whether such claim is based upon any of the above stated reasons or otherwise. Results relate only to the samples identified above. This report shall not be reproduced except in full with written approval of Cardinal Laboratories.

Mike Snyder For Celey D. Keene, Lab Director/Quality Manager



PHONE (575) 393-2326 ° 101 E. MARLAND ° HOBBS, NM 88240

Analytical Results For:

BBC International, Inc.
 Cliff Brunson
 P.O. Box 805
 Hobbs NM, 88241
 Fax To: (575) 397-0397

Received:	11/23/2020	Sampling Date:	11/19/2020
Reported:	11/25/2020	Sampling Type:	Soil
Project Name:	LENGTH CC 6-7 FED COM #22H	Sampling Condition:	Cool & Intact
Project Number:	(4- 2 - 19)	Sample Received By:	Tamara Oldaker
Project Location:	OXY - EDDY CO NM		

Sample ID: BS 31 (H003101-31)

BTEx 8021B		mg/kg		Analyzed By: MS						
Analyte	Result	Reporting Limit	Analyzed	Method Blank	BS	% Recovery	True Value QC	RPD	Qualifier	
Benzene*	<0.050	0.050	11/24/2020	ND	1.89	94.3	2.00	6.37		
Toluene*	<0.050	0.050	11/24/2020	ND	1.81	90.3	2.00	6.09		
Ethylbenzene*	<0.050	0.050	11/24/2020	ND	1.89	94.5	2.00	6.01		
Total Xylenes*	<0.150	0.150	11/24/2020	ND	5.43	90.5	6.00	5.70		
Total BTEX	<0.300	0.300	11/24/2020	ND						

Surrogate: 4-Bromofluorobenzene (PID) 99.6 % 73.3-129

Chloride, SM4500Cl-B		mg/kg		Analyzed By: AC						
Analyte	Result	Reporting Limit	Analyzed	Method Blank	BS	% Recovery	True Value QC	RPD	Qualifier	
Chloride	304	16.0	11/24/2020	ND	400	100	400	3.92		

TPH 8015M		mg/kg		Analyzed By: MS					
Analyte	Result	Reporting Limit	Analyzed	Method Blank	BS	% Recovery	True Value QC	RPD	Qualifier
GRO C6-C10*	<10.0	10.0	11/24/2020	ND	213	107	200	1.60	
DRO >C10-C28*	<10.0	10.0	11/24/2020	ND	198	98.9	200	0.705	
EXT DRO >C28-C36	<10.0	10.0	11/24/2020	ND					

Surrogate: 1-Chlorooctane 72.1 % 44.3-144

Surrogate: 1-Chlorooctadecane 67.2 % 42.2-156

Cardinal Laboratories

*=Accredited Analyte

PLEASE NOTE: Liability and Damages. Cardinal's liability and client's exclusive remedy for any claim arising, whether based in contract or tort, shall be limited to the amount paid by client for analyses. All claims, including those for negligence and any other cause whatsoever shall be deemed waived unless made in writing and received by Cardinal within thirty (30) days after completion of the applicable service. In no event shall Cardinal be liable for incidental or consequential damages, including, without limitation, business interruptions, loss of use, or loss of profits incurred by client, its subsidiaries, affiliates or successors arising out of or related to the performance of the services hereunder by Cardinal, regardless of whether such claim is based upon any of the above stated reasons or otherwise. Results relate only to the samples identified above. This report shall not be reproduced except in full with written approval of Cardinal Laboratories.

Mike Snyder For Celey D. Keene, Lab Director/Quality Manager



PHONE (575) 393-2326 ° 101 E. MARLAND ° HOBBS, NM 88240

Analytical Results For:

BBC International, Inc.
 Cliff Brunson
 P.O. Box 805
 Hobbs NM, 88241
 Fax To: (575) 397-0397

Received:	11/23/2020	Sampling Date:	11/19/2020
Reported:	11/25/2020	Sampling Type:	Soil
Project Name:	LENGTH CC 6-7 FED COM #22H	Sampling Condition:	Cool & Intact
Project Number:	(4- 2 - 19)	Sample Received By:	Tamara Oldaker
Project Location:	OXY - EDDY CO NM		

Sample ID: SW 1 (H003101-32)

BTX 8021B		mg/kg		Analyzed By: MS					
Analyte	Result	Reporting Limit	Analyzed	Method Blank	BS	% Recovery	True Value QC	RPD	Qualifier
Benzene*	<0.050	0.050	11/24/2020	ND	1.89	94.3	2.00	6.37	
Toluene*	<0.050	0.050	11/24/2020	ND	1.81	90.3	2.00	6.09	
Ethylbenzene*	<0.050	0.050	11/24/2020	ND	1.89	94.5	2.00	6.01	
Total Xylenes*	<0.150	0.150	11/24/2020	ND	5.43	90.5	6.00	5.70	
Total BTX	<0.300	0.300	11/24/2020	ND					

Surrogate: 4-Bromofluorobenzene (PID) 100 % 73.3-129

Chloride, SM4500CI-B		mg/kg		Analyzed By: AC					
Analyte	Result	Reporting Limit	Analyzed	Method Blank	BS	% Recovery	True Value QC	RPD	Qualifier
Chloride	464	16.0	11/24/2020	ND	400	100	400	3.92	

TPH 8015M		mg/kg		Analyzed By: MS					
Analyte	Result	Reporting Limit	Analyzed	Method Blank	BS	% Recovery	True Value QC	RPD	Qualifier
GRO C6-C10*	<10.0	10.0	11/24/2020	ND	213	107	200	1.60	
DRO >C10-C28*	32.9	10.0	11/24/2020	ND	198	98.9	200	0.705	
EXT DRO >C28-C36	<10.0	10.0	11/24/2020	ND					

Surrogate: 1-Chlorooctane 77.6 % 44.3-144

Surrogate: 1-Chlorooctadecane 75.8 % 42.2-156

Cardinal Laboratories

*=Accredited Analyte

PLEASE NOTE: Liability and Damages. Cardinal's liability and client's exclusive remedy for any claim arising, whether based in contract or tort, shall be limited to the amount paid by client for analyses. All claims, including those for negligence and any other cause whatsoever shall be deemed waived unless made in writing and received by Cardinal within thirty (30) days after completion of the applicable service. In no event shall Cardinal be liable for incidental or consequential damages, including, without limitation, business interruptions, loss of use, or loss of profits incurred by client, its subsidiaries, affiliates or successors arising out of or related to the performance of the services hereunder by Cardinal, regardless of whether such claim is based upon any of the above stated reasons or otherwise. Results relate only to the samples identified above. This report shall not be reproduced except in full with written approval of Cardinal Laboratories.

Mike Snyder For Celey D. Keene, Lab Director/Quality Manager



PHONE (575) 393-2326 ° 101 E. MARLAND ° HOBBS, NM 88240

Analytical Results For:

BBC International, Inc.
 Cliff Brunson
 P.O. Box 805
 Hobbs NM, 88241
 Fax To: (575) 397-0397

Received:	11/23/2020	Sampling Date:	11/19/2020
Reported:	11/25/2020	Sampling Type:	Soil
Project Name:	LENGTH CC 6-7 FED COM #22H	Sampling Condition:	Cool & Intact
Project Number:	(4- 2 - 19)	Sample Received By:	Tamara Oldaker
Project Location:	OXY - EDDY CO NM		

Sample ID: SW 2 (H003101-33)

BTX 8021B		mg/kg		Analyzed By: MS						
Analyte	Result	Reporting Limit	Analyzed	Method Blank	BS	% Recovery	True Value QC	RPD	Qualifier	
Benzene*	<0.050	0.050	11/24/2020	ND	1.89	94.3	2.00	6.37		
Toluene*	<0.050	0.050	11/24/2020	ND	1.81	90.3	2.00	6.09		
Ethylbenzene*	<0.050	0.050	11/24/2020	ND	1.89	94.5	2.00	6.01		
Total Xylenes*	<0.150	0.150	11/24/2020	ND	5.43	90.5	6.00	5.70		
Total BTX	<0.300	0.300	11/24/2020	ND						

Surrogate: 4-Bromofluorobenzene (PID) 101 % 73.3-129

Chloride, SM4500Cl-B		mg/kg		Analyzed By: AC						
Analyte	Result	Reporting Limit	Analyzed	Method Blank	BS	% Recovery	True Value QC	RPD	Qualifier	
Chloride	544	16.0	11/24/2020	ND	400	100	400	3.92		

TPH 8015M		mg/kg		Analyzed By: MS					
Analyte	Result	Reporting Limit	Analyzed	Method Blank	BS	% Recovery	True Value QC	RPD	Qualifier
GRO C6-C10*	<10.0	10.0	11/24/2020	ND	213	107	200	1.60	
DRO >C10-C28*	63.3	10.0	11/24/2020	ND	198	98.9	200	0.705	
EXT DRO >C28-C36	<10.0	10.0	11/24/2020	ND					

Surrogate: 1-Chlorooctane 76.6 % 44.3-144

Surrogate: 1-Chlorooctadecane 73.9 % 42.2-156

Cardinal Laboratories

*=Accredited Analyte

PLEASE NOTE: Liability and Damages. Cardinal's liability and client's exclusive remedy for any claim arising, whether based in contract or tort, shall be limited to the amount paid by client for analyses. All claims, including those for negligence and any other cause whatsoever shall be deemed waived unless made in writing and received by Cardinal within thirty (30) days after completion of the applicable service. In no event shall Cardinal be liable for incidental or consequential damages, including, without limitation, business interruptions, loss of use, or loss of profits incurred by client, its subsidiaries, affiliates or successors arising out of or related to the performance of the services hereunder by Cardinal, regardless of whether such claim is based upon any of the above stated reasons or otherwise. Results relate only to the samples identified above. This report shall not be reproduced except in full with written approval of Cardinal Laboratories.

Mike Snyder For Celey D. Keene, Lab Director/Quality Manager



PHONE (575) 393-2326 ° 101 E. MARLAND ° HOBBS, NM 88240

Analytical Results For:

BBC International, Inc.
 Cliff Brunson
 P.O. Box 805
 Hobbs NM, 88241
 Fax To: (575) 397-0397

Received:	11/23/2020	Sampling Date:	11/19/2020
Reported:	11/25/2020	Sampling Type:	Soil
Project Name:	LENGTH CC 6-7 FED COM #22H	Sampling Condition:	Cool & Intact
Project Number:	(4- 2 - 19)	Sample Received By:	Tamara Oldaker
Project Location:	OXY - EDDY CO NM		

Sample ID: SW 3 (H003101-34)

BTX 8021B		mg/kg		Analyzed By: MS						
Analyte	Result	Reporting Limit	Analyzed	Method Blank	BS	% Recovery	True Value QC	RPD	Qualifier	
Benzene*	<0.050	0.050	11/24/2020	ND	1.89	94.3	2.00	6.37		
Toluene*	<0.050	0.050	11/24/2020	ND	1.81	90.3	2.00	6.09		
Ethylbenzene*	<0.050	0.050	11/24/2020	ND	1.89	94.5	2.00	6.01		
Total Xylenes*	<0.150	0.150	11/24/2020	ND	5.43	90.5	6.00	5.70		
Total BTX	<0.300	0.300	11/24/2020	ND						

Surrogate: 4-Bromofluorobenzene (PID) 101 % 73.3-129

Chloride, SM4500CI-B		mg/kg		Analyzed By: AC						
Analyte	Result	Reporting Limit	Analyzed	Method Blank	BS	% Recovery	True Value QC	RPD	Qualifier	
Chloride	592	16.0	11/24/2020	ND	400	100	400	3.92		

TPH 8015M		mg/kg		Analyzed By: MS					
Analyte	Result	Reporting Limit	Analyzed	Method Blank	BS	% Recovery	True Value QC	RPD	Qualifier
GRO C6-C10*	<10.0	10.0	11/24/2020	ND	213	107	200	1.60	
DRO >C10-C28*	36.1	10.0	11/24/2020	ND	198	98.9	200	0.705	
EXT DRO >C28-C36	<10.0	10.0	11/24/2020	ND					

Surrogate: 1-Chlorooctane 75.6 % 44.3-144

Surrogate: 1-Chlorooctadecane 72.5 % 42.2-156

Cardinal Laboratories

*=Accredited Analyte

PLEASE NOTE: Liability and Damages. Cardinal's liability and client's exclusive remedy for any claim arising, whether based in contract or tort, shall be limited to the amount paid by client for analyses. All claims, including those for negligence and any other cause whatsoever shall be deemed waived unless made in writing and received by Cardinal within thirty (30) days after completion of the applicable service. In no event shall Cardinal be liable for incidental or consequential damages, including, without limitation, business interruptions, loss of use, or loss of profits incurred by client, its subsidiaries, affiliates or successors arising out of or related to the performance of the services hereunder by Cardinal, regardless of whether such claim is based upon any of the above stated reasons or otherwise. Results relate only to the samples identified above. This report shall not be reproduced except in full with written approval of Cardinal Laboratories.

Mike Snyder For Celey D. Keene, Lab Director/Quality Manager



PHONE (575) 393-2326 ° 101 E. MARLAND ° HOBBS, NM 88240

Analytical Results For:

BBC International, Inc.
 Cliff Brunson
 P.O. Box 805
 Hobbs NM, 88241
 Fax To: (575) 397-0397

Received:	11/23/2020	Sampling Date:	11/20/2020
Reported:	11/25/2020	Sampling Type:	Soil
Project Name:	LENGTH CC 6-7 FED COM #22H	Sampling Condition:	Cool & Intact
Project Number:	(4- 2 - 19)	Sample Received By:	Tamara Oldaker
Project Location:	OXY - EDDY CO NM		

Sample ID: SW 4 (H003101-35)

BTEx 8021B		mg/kg		Analyzed By: MS						
Analyte	Result	Reporting Limit	Analyzed	Method Blank	BS	% Recovery	True Value QC	RPD	Qualifier	
Benzene*	<0.050	0.050	11/24/2020	ND	1.89	94.3	2.00	6.37		
Toluene*	<0.050	0.050	11/24/2020	ND	1.81	90.3	2.00	6.09		
Ethylbenzene*	<0.050	0.050	11/24/2020	ND	1.89	94.5	2.00	6.01		
Total Xylenes*	<0.150	0.150	11/24/2020	ND	5.43	90.5	6.00	5.70		
Total BTEx	<0.300	0.300	11/24/2020	ND						

Surrogate: 4-Bromofluorobenzene (PID) 99.9 % 73.3-129

Chloride, SM4500CI-B		mg/kg		Analyzed By: AC						
Analyte	Result	Reporting Limit	Analyzed	Method Blank	BS	% Recovery	True Value QC	RPD	Qualifier	
Chloride	320	16.0	11/24/2020	ND	400	100	400	3.92		

TPH 8015M		mg/kg		Analyzed By: MS					
Analyte	Result	Reporting Limit	Analyzed	Method Blank	BS	% Recovery	True Value QC	RPD	Qualifier
GRO C6-C10*	<10.0	10.0	11/24/2020	ND	213	107	200	1.60	
DRO >C10-C28*	27.9	10.0	11/24/2020	ND	198	98.9	200	0.705	
EXT DRO >C28-C36	<10.0	10.0	11/24/2020	ND					

Surrogate: 1-Chlorooctane 71.3 % 44.3-144

Surrogate: 1-Chlorooctadecane 67.8 % 42.2-156

Cardinal Laboratories

*=Accredited Analyte

PLEASE NOTE: Liability and Damages. Cardinal's liability and client's exclusive remedy for any claim arising, whether based in contract or tort, shall be limited to the amount paid by client for analyses. All claims, including those for negligence and any other cause whatsoever shall be deemed waived unless made in writing and received by Cardinal within thirty (30) days after completion of the applicable service. In no event shall Cardinal be liable for incidental or consequential damages, including, without limitation, business interruptions, loss of use, or loss of profits incurred by client, its subsidiaries, affiliates or successors arising out of or related to the performance of the services hereunder by Cardinal, regardless of whether such claim is based upon any of the above stated reasons or otherwise. Results relate only to the samples identified above. This report shall not be reproduced except in full with written approval of Cardinal Laboratories.

Mike Snyder For Celey D. Keene, Lab Director/Quality Manager



PHONE (575) 393-2326 ° 101 E. MARLAND ° HOBBS, NM 88240

Analytical Results For:

BBC International, Inc.
 Cliff Brunson
 P.O. Box 805
 Hobbs NM, 88241
 Fax To: (575) 397-0397

Received:	11/23/2020	Sampling Date:	11/20/2020
Reported:	11/25/2020	Sampling Type:	Soil
Project Name:	LENGTH CC 6-7 FED COM #22H	Sampling Condition:	Cool & Intact
Project Number:	(4- 2 - 19)	Sample Received By:	Tamara Oldaker
Project Location:	OXY - EDDY CO NM		

Sample ID: SW 5 (H003101-36)

BTX 8021B		mg/kg		Analyzed By: MS						
Analyte	Result	Reporting Limit	Analyzed	Method Blank	BS	% Recovery	True Value QC	RPD	Qualifier	
Benzene*	<0.050	0.050	11/24/2020	ND	1.94	96.8	2.00	7.23		
Toluene*	<0.050	0.050	11/24/2020	ND	1.85	92.5	2.00	7.23		
Ethylbenzene*	<0.050	0.050	11/24/2020	ND	1.93	96.3	2.00	7.17		
Total Xylenes*	<0.150	0.150	11/24/2020	ND	5.53	92.1	6.00	6.42		
Total BTX	<0.300	0.300	11/24/2020	ND						

Surrogate: 4-Bromofluorobenzene (PID) 100 % 73.3-129

Chloride, SM4500CI-B		mg/kg		Analyzed By: AC						
Analyte	Result	Reporting Limit	Analyzed	Method Blank	BS	% Recovery	True Value QC	RPD	Qualifier	
Chloride	320	16.0	11/24/2020	ND	400	100	400	3.92		

TPH 8015M		mg/kg		Analyzed By: MS					
Analyte	Result	Reporting Limit	Analyzed	Method Blank	BS	% Recovery	True Value QC	RPD	Qualifier
GRO C6-C10*	<10.0	10.0	11/24/2020	ND	213	107	200	1.60	
DRO >C10-C28*	37.0	10.0	11/24/2020	ND	198	98.9	200	0.705	
EXT DRO >C28-C36	<10.0	10.0	11/24/2020	ND					

Surrogate: 1-Chlorooctane 77.8 % 44.3-144

Surrogate: 1-Chlorooctadecane 74.1 % 42.2-156

Cardinal Laboratories

*=Accredited Analyte

PLEASE NOTE: Liability and Damages. Cardinal's liability and client's exclusive remedy for any claim arising, whether based in contract or tort, shall be limited to the amount paid by client for analyses. All claims, including those for negligence and any other cause whatsoever shall be deemed waived unless made in writing and received by Cardinal within thirty (30) days after completion of the applicable service. In no event shall Cardinal be liable for incidental or consequential damages, including, without limitation, business interruptions, loss of use, or loss of profits incurred by client, its subsidiaries, affiliates or successors arising out of or related to the performance of the services hereunder by Cardinal, regardless of whether such claim is based upon any of the above stated reasons or otherwise. Results relate only to the samples identified above. This report shall not be reproduced except in full with written approval of Cardinal Laboratories.

Mike Snyder For Celey D. Keene, Lab Director/Quality Manager



PHONE (575) 393-2326 ° 101 E. MARLAND ° HOBBS, NM 88240

Analytical Results For:

BBC International, Inc.
 Cliff Brunson
 P.O. Box 805
 Hobbs NM, 88241
 Fax To: (575) 397-0397

Received:	11/23/2020	Sampling Date:	11/20/2020
Reported:	11/25/2020	Sampling Type:	Soil
Project Name:	LENGTH CC 6-7 FED COM #22H	Sampling Condition:	Cool & Intact
Project Number:	(4- 2 - 19)	Sample Received By:	Tamara Oldaker
Project Location:	OXY - EDDY CO NM		

Sample ID: SW 6 (H003101-37)

BTEx 8021B		mg/kg		Analyzed By: MS						
Analyte	Result	Reporting Limit	Analyzed	Method Blank	BS	% Recovery	True Value QC	RPD	Qualifier	
Benzene*	<0.050	0.050	11/24/2020	ND	1.94	96.8	2.00	7.23		
Toluene*	<0.050	0.050	11/24/2020	ND	1.85	92.5	2.00	7.23		
Ethylbenzene*	<0.050	0.050	11/24/2020	ND	1.93	96.3	2.00	7.17		
Total Xylenes*	<0.150	0.150	11/24/2020	ND	5.53	92.1	6.00	6.42		
Total BTEx	<0.300	0.300	11/24/2020	ND						

Surrogate: 4-Bromofluorobenzene (PID) 101 % 73.3-129

Chloride, SM4500CI-B		mg/kg		Analyzed By: AC						
Analyte	Result	Reporting Limit	Analyzed	Method Blank	BS	% Recovery	True Value QC	RPD	Qualifier	
Chloride	448	16.0	11/24/2020	ND	400	100	400	3.92		

TPH 8015M		mg/kg		Analyzed By: MS					
Analyte	Result	Reporting Limit	Analyzed	Method Blank	BS	% Recovery	True Value QC	RPD	Qualifier
GRO C6-C10*	<10.0	10.0	11/24/2020	ND	213	107	200	1.60	
DRO >C10-C28*	<10.0	10.0	11/24/2020	ND	198	98.9	200	0.705	
EXT DRO >C28-C36	<10.0	10.0	11/24/2020	ND					

Surrogate: 1-Chlorooctane 73.0 % 44.3-144

Surrogate: 1-Chlorooctadecane 70.8 % 42.2-156

Cardinal Laboratories

*=Accredited Analyte

PLEASE NOTE: Liability and Damages. Cardinal's liability and client's exclusive remedy for any claim arising, whether based in contract or tort, shall be limited to the amount paid by client for analyses. All claims, including those for negligence and any other cause whatsoever shall be deemed waived unless made in writing and received by Cardinal within thirty (30) days after completion of the applicable service. In no event shall Cardinal be liable for incidental or consequential damages, including, without limitation, business interruptions, loss of use, or loss of profits incurred by client, its subsidiaries, affiliates or successors arising out of or related to the performance of the services hereunder by Cardinal, regardless of whether such claim is based upon any of the above stated reasons or otherwise. Results relate only to the samples identified above. This report shall not be reproduced except in full with written approval of Cardinal Laboratories.

Mike Snyder For Celey D. Keene, Lab Director/Quality Manager



PHONE (575) 393-2326 ° 101 E. MARLAND ° HOBBS, NM 88240

Analytical Results For:

BBC International, Inc.
 Cliff Brunson
 P.O. Box 805
 Hobbs NM, 88241
 Fax To: (575) 397-0397

Received:	11/23/2020	Sampling Date:	11/20/2020
Reported:	11/25/2020	Sampling Type:	Soil
Project Name:	LENGTH CC 6-7 FED COM #22H	Sampling Condition:	Cool & Intact
Project Number:	(4- 2 - 19)	Sample Received By:	Tamara Oldaker
Project Location:	OXY - EDDY CO NM		

Sample ID: SW 7 (H003101-38)

BTEx 8021B		mg/kg		Analyzed By: MS						
Analyte	Result	Reporting Limit	Analyzed	Method Blank	BS	% Recovery	True Value QC	RPD	Qualifier	
Benzene*	<0.050	0.050	11/24/2020	ND	1.94	96.8	2.00	7.23		
Toluene*	<0.050	0.050	11/24/2020	ND	1.85	92.5	2.00	7.23		
Ethylbenzene*	<0.050	0.050	11/24/2020	ND	1.93	96.3	2.00	7.17		
Total Xylenes*	<0.150	0.150	11/24/2020	ND	5.53	92.1	6.00	6.42		
Total BTEx	<0.300	0.300	11/24/2020	ND						

Surrogate: 4-Bromofluorobenzene (PID) 100 % 73.3-129

Chloride, SM4500CI-B		mg/kg		Analyzed By: AC						
Analyte	Result	Reporting Limit	Analyzed	Method Blank	BS	% Recovery	True Value QC	RPD	Qualifier	
Chloride	224	16.0	11/24/2020	ND	400	100	400	3.92		

TPH 8015M		mg/kg		Analyzed By: MS					
Analyte	Result	Reporting Limit	Analyzed	Method Blank	BS	% Recovery	True Value QC	RPD	Qualifier
GRO C6-C10*	<10.0	10.0	11/24/2020	ND	213	107	200	1.60	
DRO >C10-C28*	<10.0	10.0	11/24/2020	ND	198	98.9	200	0.705	
EXT DRO >C28-C36	<10.0	10.0	11/24/2020	ND					

Surrogate: 1-Chlorooctane 76.9 % 44.3-144

Surrogate: 1-Chlorooctadecane 76.0 % 42.2-156

Cardinal Laboratories

*=Accredited Analyte

PLEASE NOTE: Liability and Damages. Cardinal's liability and client's exclusive remedy for any claim arising, whether based in contract or tort, shall be limited to the amount paid by client for analyses. All claims, including those for negligence and any other cause whatsoever shall be deemed waived unless made in writing and received by Cardinal within thirty (30) days after completion of the applicable service. In no event shall Cardinal be liable for incidental or consequential damages, including, without limitation, business interruptions, loss of use, or loss of profits incurred by client, its subsidiaries, affiliates or successors arising out of or related to the performance of the services hereunder by Cardinal, regardless of whether such claim is based upon any of the above stated reasons or otherwise. Results relate only to the samples identified above. This report shall not be reproduced except in full with written approval of Cardinal Laboratories.

Mike Snyder For Celey D. Keene, Lab Director/Quality Manager



PHONE (575) 393-2326 ° 101 E. MARLAND ° HOBBS, NM 88240

Analytical Results For:

BBC International, Inc.
 Cliff Brunson
 P.O. Box 805
 Hobbs NM, 88241
 Fax To: (575) 397-0397

Received:	11/23/2020	Sampling Date:	11/20/2020
Reported:	11/25/2020	Sampling Type:	Soil
Project Name:	LENGTH CC 6-7 FED COM #22H	Sampling Condition:	Cool & Intact
Project Number:	(4- 2 - 19)	Sample Received By:	Tamara Oldaker
Project Location:	OXY - EDDY CO NM		

Sample ID: SW 8 (H003101-39)

BTX 8021B		mg/kg		Analyzed By: MS						
Analyte	Result	Reporting Limit	Analyzed	Method Blank	BS	% Recovery	True Value QC	RPD	Qualifier	
Benzene*	<0.050	0.050	11/24/2020	ND	1.94	96.8	2.00	7.23		
Toluene*	<0.050	0.050	11/24/2020	ND	1.85	92.5	2.00	7.23		
Ethylbenzene*	<0.050	0.050	11/24/2020	ND	1.93	96.3	2.00	7.17		
Total Xylenes*	<0.150	0.150	11/24/2020	ND	5.53	92.1	6.00	6.42		
Total BTX	<0.300	0.300	11/24/2020	ND						

Surrogate: 4-Bromofluorobenzene (PID) 99.6 % 73.3-129

Chloride, SM4500CI-B		mg/kg		Analyzed By: AC						
Analyte	Result	Reporting Limit	Analyzed	Method Blank	BS	% Recovery	True Value QC	RPD	Qualifier	
Chloride	368	16.0	11/24/2020	ND	400	100	400	3.92		

TPH 8015M		mg/kg		Analyzed By: MS					
Analyte	Result	Reporting Limit	Analyzed	Method Blank	BS	% Recovery	True Value QC	RPD	Qualifier
GRO C6-C10*	<10.0	10.0	11/24/2020	ND	213	107	200	1.60	
DRO >C10-C28*	<10.0	10.0	11/24/2020	ND	198	98.9	200	0.705	
EXT DRO >C28-C36	<10.0	10.0	11/24/2020	ND					

Surrogate: 1-Chlorooctane 78.4 % 44.3-144

Surrogate: 1-Chlorooctadecane 75.6 % 42.2-156

Cardinal Laboratories

*=Accredited Analyte

PLEASE NOTE: Liability and Damages. Cardinal's liability and client's exclusive remedy for any claim arising, whether based in contract or tort, shall be limited to the amount paid by client for analyses. All claims, including those for negligence and any other cause whatsoever shall be deemed waived unless made in writing and received by Cardinal within thirty (30) days after completion of the applicable service. In no event shall Cardinal be liable for incidental or consequential damages, including, without limitation, business interruptions, loss of use, or loss of profits incurred by client, its subsidiaries, affiliates or successors arising out of or related to the performance of the services hereunder by Cardinal, regardless of whether such claim is based upon any of the above stated reasons or otherwise. Results relate only to the samples identified above. This report shall not be reproduced except in full with written approval of Cardinal Laboratories.

Mike Snyder For Celey D. Keene, Lab Director/Quality Manager



PHONE (575) 393-2326 ° 101 E. MARLAND ° HOBBS, NM 88240

Analytical Results For:

BBC International, Inc.
 Cliff Brunson
 P.O. Box 805
 Hobbs NM, 88241
 Fax To: (575) 397-0397

Received:	11/23/2020	Sampling Date:	11/20/2020
Reported:	11/25/2020	Sampling Type:	Soil
Project Name:	LENGTH CC 6-7 FED COM #22H	Sampling Condition:	Cool & Intact
Project Number:	(4- 2 - 19)	Sample Received By:	Tamara Oldaker
Project Location:	OXY - EDDY CO NM		

Sample ID: SW 9 (H003101-40)

BTEx 8021B		mg/kg		Analyzed By: MS						
Analyte	Result	Reporting Limit	Analyzed	Method Blank	BS	% Recovery	True Value QC	RPD	Qualifier	
Benzene*	<0.050	0.050	11/24/2020	ND	1.94	96.8	2.00	7.23		
Toluene*	<0.050	0.050	11/24/2020	ND	1.85	92.5	2.00	7.23		
Ethylbenzene*	<0.050	0.050	11/24/2020	ND	1.93	96.3	2.00	7.17		
Total Xylenes*	<0.150	0.150	11/24/2020	ND	5.53	92.1	6.00	6.42		
Total BTEx	<0.300	0.300	11/24/2020	ND						

Surrogate: 4-Bromofluorobenzene (PID) 100 % 73.3-129

Chloride, SM4500CI-B		mg/kg		Analyzed By: AC						
Analyte	Result	Reporting Limit	Analyzed	Method Blank	BS	% Recovery	True Value QC	RPD	Qualifier	
Chloride	320	16.0	11/24/2020	ND	400	100	400	3.92		

TPH 8015M		mg/kg		Analyzed By: MS					
Analyte	Result	Reporting Limit	Analyzed	Method Blank	BS	% Recovery	True Value QC	RPD	Qualifier
GRO C6-C10*	<10.0	10.0	11/24/2020	ND	213	107	200	1.60	
DRO >C10-C28*	<10.0	10.0	11/24/2020	ND	198	98.9	200	0.705	
EXT DRO >C28-C36	<10.0	10.0	11/24/2020	ND					

Surrogate: 1-Chlorooctane 74.0 % 44.3-144

Surrogate: 1-Chlorooctadecane 72.8 % 42.2-156

Cardinal Laboratories

*=Accredited Analyte

PLEASE NOTE: Liability and Damages. Cardinal's liability and client's exclusive remedy for any claim arising, whether based in contract or tort, shall be limited to the amount paid by client for analyses. All claims, including those for negligence and any other cause whatsoever shall be deemed waived unless made in writing and received by Cardinal within thirty (30) days after completion of the applicable service. In no event shall Cardinal be liable for incidental or consequential damages, including, without limitation, business interruptions, loss of use, or loss of profits incurred by client, its subsidiaries, affiliates or successors arising out of or related to the performance of the services hereunder by Cardinal, regardless of whether such claim is based upon any of the above stated reasons or otherwise. Results relate only to the samples identified above. This report shall not be reproduced except in full with written approval of Cardinal Laboratories.

Mike Snyder For Celey D. Keene, Lab Director/Quality Manager



PHONE (575) 393-2326 ° 101 E. MARLAND ° HOBBS, NM 88240

Notes and Definitions

ND	Analyte NOT DETECTED at or above the reporting limit
RPD	Relative Percent Difference
**	Samples not received at proper temperature of 6°C or below.
***	Insufficient time to reach temperature.
-	Chloride by SM4500Cl-B does not require samples be received at or below 6°C Samples reported on an as received basis (wet) unless otherwise noted on report

Cardinal Laboratories

*=Accredited Analyte

PLEASE NOTE: Liability and Damages. Cardinal's liability and client's exclusive remedy for any claim arising, whether based in contract or tort, shall be limited to the amount paid by client for analyses. All claims, including those for negligence and any other cause whatsoever shall be deemed waived unless made in writing and received by Cardinal within thirty (30) days after completion of the applicable service. In no event shall Cardinal be liable for incidental or consequential damages, including, without limitation, business interruptions, loss of use, or loss of profits incurred by client, its subsidiaries, affiliates or successors arising out of or related to the performance of the services hereunder by Cardinal, regardless of whether such claim is based upon any of the above stated reasons or otherwise. Results relate only to the samples identified above. This report shall not be reproduced except in full with written approval of Cardinal Laboratories.

A handwritten signature in black ink, appearing to read "Mike Snyder", is written over a horizontal line.

Mike Snyder For Celey D. Keene, Lab Director/Quality Manager


CARDINAL LABORATORIES

 101 East Marland, Hobbs, NM 88240
 (505) 393-2326 FAX (505) 393-2476

CHAIN-OF-CUSTODY AND ANALYSIS REQUEST

(1 of 4)

Company Name: BBC International, Inc.				BILL TO				ANALYSIS REQUEST															
Project Manager: Cliff Brunson				P.O. #:																			
Address: P.O. Box 805				Company: OXY																			
City: Hobbs State: NM Zip: 88241				Attn: WADE																			
Phone #: 575-397-6388 Fax #: 575-397-0397				Address:																			
Project #: Project Owner: Oxy				City:																			
Project Name: Length CC 6-7 Fed Com 22H (4-2-19)				State: Zip:																			
Project Location: Eddy County, NM				Phone #:																			
Sampler Name: Simon Rendon				Fax #:																			
FOR LAB USE ONLY																							
Lab I.D.		Sample I.D.		(G)RAB OR (C)OMP.		# CONTAINERS		MATRIX		PRESERV.		SAMPLING											
				GROUNDWATER		WASTEWATER		SOIL		OIL		SLUDGE		OTHER:		ACID/BASE:		ICE / COOL		OTHER:			
H003101				G		I																	
1 BS1																							
2 BS2																							
3 BS3																							
4 BS4																							
5 BS5																							
6 BS6																							
7 BS7																							
8 BS8																							
9 BS9																							
10 BS10																							

PLEASE NOTE: Liability and Damages. Cardinal's liability and client's exclusive remedy for any claim arising whether based in contract or tort, shall be limited to the amount paid by the client for the analyses. All claims, including those for negligence and any other cause whatsoever shall be deemed waived unless made in writing and received by Cardinal within 30 days after completion of the applicable service. In no event shall Cardinal be liable for incidental or consequential damages, including without limitation, business interruptions, loss of use, or loss of profits incurred by client, its subsidiaries, affiliates or successors arising out of or related to the performance of services hereunder by Cardinal, regardless of whether such claim is based upon any of the above stated reasons or otherwise.

Relinquished By:		Date: 11-23-20		Received By:		Phone Result: <input type="checkbox"/> Yes <input type="checkbox"/> No		Add'l Phone #:	
		Time: 1:25				Fax Result: <input type="checkbox"/> Yes <input type="checkbox"/> No		Add'l Fax #:	
Relinquished By:		Date:		Received By:		REMARKS: Rush! Added 11/24/20 @ 0802			
		Time:							
Delivered By: (Circle One)				Sample Condition		CHECKED BY:			
Sampler - UPS - Bus - Other: 0.8c #113				Cool Intact <input type="checkbox"/> Yes <input type="checkbox"/> No		(Initials)			

† Cardinal cannot accept verbal changes. Please fax written changes to 505-393-2476



ARDINAL LABORATORIES

101 East Marland, Hobbs, NM 88240
(505) 393-2326 FAX (505) 393-2476

CHAIN-OF-CUSTODY AND ANALYSIS REQUEST

Company Name: BBC International, Inc.				BILL TO				ANALYSIS REQUEST														
Project Manager: Cliff Brunson				P.O. #:																		
Address: P.O. Box 805				Company: OXY																		
City: Hobbs State: NM Zip: 88241				Attn: WADE																		
Phone #: 575-397-6388 Fax #: 575-397-0397				Address:																		
Project #: Project Owner: Oxy				City:																		
Project Name: Length CC 6-7 Fed Com 22H (4-2-19)				State: Zip:																		
Project Location: Eddy County, NM				Phone #:																		
Sampler Name: Simon Rendon				Fax #:																		
FOR LAB USE ONLY																						
Lab I.D.	Sample I.D.	(G)RAB OR (C)OMP.	# CONTAINERS	MATRIX					PRESERV.			SAMPLING										
				GROUNDWATER	WASTEWATER	SOIL	OIL	SLUDGE	OTHER	ACID/BASE	ICE/COOL	OTHER	DATE	TIME	CL	BTEX	TPH	EXT				
4003101																						
11	BS11	G	I			I							11/18/20	2:44 PM	✓	✓	✓					
12	BS12												11/19/20	9:20 AM	✓	✓	✓					
13	BS13												11/19/20	9:33 AM	✓	✓	✓					
14	BS14												11/19/20	9:42 AM	✓	✓	✓					
15	BS15												11/19/20	10:15 AM	✓	✓	✓					
16	BS16												11/19/20	10:26 AM	✓	✓	✓					
17	BS17												11/19/20	10:43 AM	✓	✓	✓					
18	BS18												11/19/20	11:10 AM	✓	✓	✓					
19	BS19												11/19/20	11:22 AM	✓	✓	✓					
20	BS20												11/19/20	11:38 AM	✓	✓	✓					

PLEASE NOTE: Liability and Damages. Cardinal's liability and client's exclusive remedy for any claim arising whether based in contract or tort, shall be limited to the amount paid by the client for the analyses. All claims, including those for negligence and any other cause whatsoever shall be deemed waived unless made in writing and received by Cardinal within 30 days after completion of the applicable service. In no event shall Cardinal be liable for incidental or consequential damages, including without limitation, business interruptions, loss of use, or loss of profits incurred by client, its subsidiaries, affiliates or successors arising out of or related to the performance of services hereunder by Cardinal, regardless of whether such claim is based upon any of the above stated reasons or otherwise.

Relinquished By:	Date: 1/23/20	Received By:	Phone Result: <input type="checkbox"/> Yes <input type="checkbox"/> No	Add'l Phone #:
	Time: 1625		Fax Result: <input type="checkbox"/> Yes <input type="checkbox"/> No	Add'l Fax #:
Relinquished By:	Date:	Received By:	REMARKS:	
	Time:		Pushli! added 11/24/20 @ 0802	
Delivered By: (Circle One)	Sample Condition	CHECKED BY:		
Sampler - UPS - Bus - Other:	Cool Intact	(Initials)		
0.8c #113	<input type="checkbox"/> Yes <input type="checkbox"/> No	T.O.		

† Cardinal cannot accept verbal changes. Please fax written changes to 505-393-2476



CARDINAL LABORATORIES

101 East Marland, Hobbs, NM 88240

(505) 393-2326 FAX (505) 393-2476

CHAIN-OF-CUSTODY AND ANALYSIS REQUEST

Company Name: BBC International, Inc.		BILL TO		ANALYSIS REQUEST															
Project Manager: Cliff Brunson		P.O. #:																	
Address: P.O. Box 805		Company: OXY																	
City: Hobbs State: NM Zip: 88241		Attn: WADE																	
Phone #: 575-397-6388 Fax #: 575-397-0397		Address:																	
Project #: Project Owner: Oxy		City:																	
Project Name: Length CC 6-7 Fed Com 22H (4-2-19)		State: Zip:																	
Project Location: Eddy County, NM		Phone #:																	
Sampler Name: Simon Rendon		Fax #:																	
Lab I.D.	Sample I.D.	(GIRAB OR (C)OMP. # CONTAINERS	MATRIX	PRESERV.	SAMPLING	CL	BTEX	TPH	EXT										
H003101																			
21	BS21	G	I			11/18/20	11:51 AM	✓	✓	✓									
22	BS22					11/19/20	12:04 PM	✓	✓	✓									
23	BS23					11/19/20	12:44 PM	✓	✓	✓									
24	BS24					11/19/20	12:58 PM	✓	✓	✓									
25	BS25					11/19/20	1:14 PM	✓	✓	✓									
26	BS26					11/19/20	1:21 PM	✓	✓	✓									
27	BS27					11/19/20	1:30 PM	✓	✓	✓									
28	BS28					11/19/20	1:42 PM	✓	✓	✓									
29	BS29					11/19/20	1:56 PM	✓	✓	✓									
30	BS30					11/19/20	2:07 PM	✓	✓	✓									

PLEASE NOTE: Liability and Damages. Cardinal's liability and client's exclusive remedy for any claim arising whether based in contract or tort, shall be limited to the amount paid by the client for the analyses. All claims, including those for negligence and any other cause whatsoever shall be deemed waived unless made in writing and received by Cardinal within 30 days after completion of the applicable service. In no event shall Cardinal be liable for incidental or consequential damages, including without limitation, business interruptions, loss of use, or loss of profits incurred by client, its subsidiaries, affiliates or successors arising out of or related to the performance of services hereunder by Cardinal, regardless of whether such claim is based upon any of the above stated reasons or otherwise.

Relinquished By:	Date: 11-23-20	Received By:	Phone Result: <input type="checkbox"/> Yes <input type="checkbox"/> No	Add'l Phone #:
	Time: 1625		Fax Result: <input type="checkbox"/> Yes <input type="checkbox"/> No	Add'l Fax #:
Relinquished By:	Date:	Received By:	REMARKS:	
	Time:		<p>Push!! added 11/24/20 @ 0802</p>	
Delivered By: (Circle One)	Sample Condition	CHECKED BY: (Initials)		
Sampler - UPS - Bus - Other:	Cool Intact <input checked="" type="checkbox"/> Yes <input type="checkbox"/> No	TO		

† Cardinal cannot accept verbal changes. Please fax written changes to 505-393-2476



CHAIN-OF-CUSTODY AND ANALYSIS REQUEST

† Cardinal cannot accept verbal changes. Please fax written changes to 505-393-2476



PHONE (575) 393-2326 ° 101 E. MARLAND ° HOBBS, NM 88240

December 18, 2020

Cliff Brunson

BBC International, Inc.

P.O. Box 805

Hobbs, NM 88241

RE: LENGTH CC 6-7 FED COM #22H

Enclosed are the results of analyses for samples received by the laboratory on 12/17/20 16:55.

Cardinal Laboratories is accredited through Texas NELAP under certificate number T104704398-20-13. Accreditation applies to drinking water, non-potable water and solid and chemical materials. All accredited analytes are denoted by an asterisk (*). For a complete list of accredited analytes and matrices visit the TCEQ website at www.tceq.texas.gov/field/qa/lab_accred_certif.html.

Cardinal Laboratories is accredited through the State of Colorado Department of Public Health and Environment for:

Method EPA 552.2	Haloacetic Acids (HAA-5)
Method EPA 524.2	Total Trihalomethanes (TTHM)
Method EPA 524.4	Regulated VOCs (V1, V2, V3)

Accreditation applies to public drinking water matrices.

This report meets NELAP requirements and is made up of a cover page, analytical results, and a copy of the original chain-of-custody. If you have any questions concerning this report, please feel free to contact me.

Sincerely,

A handwritten signature in black ink that reads "Celey D. Keene". The signature is written in a cursive style with a large, stylized 'C' and 'K'.

Celey D. Keene

Lab Director/Quality Manager



PHONE (575) 393-2326 ° 101 E. MARLAND ° HOBBS, NM 88240

Analytical Results For:

BBC International, Inc.
 Cliff Brunson
 P.O. Box 805
 Hobbs NM, 88241
 Fax To: (575) 397-0397

Received:	12/17/2020	Sampling Date:	12/17/2020
Reported:	12/18/2020	Sampling Type:	Soil
Project Name:	LENGTH CC 6-7 FED COM #22H	Sampling Condition:	Cool & Intact
Project Number:	(4- 2 - 19)	Sample Received By:	Tamara Oldaker
Project Location:	OXY - EDDY CO NM		

Sample ID: BS 12 A (H003308-01)

BTEX 8021B		mg/kg		Analyzed By: MS					
Analyte	Result	Reporting Limit	Analyzed	Method Blank	BS	% Recovery	True Value QC	RPD	Qualifier
Benzene*	<0.050	0.050	12/18/2020	ND	1.95	97.4	2.00	1.79	
Toluene*	<0.050	0.050	12/18/2020	ND	1.87	93.6	2.00	1.46	
Ethylbenzene*	<0.050	0.050	12/18/2020	ND	1.93	96.5	2.00	1.85	
Total Xylenes*	<0.150	0.150	12/18/2020	ND	5.50	91.7	6.00	1.71	
Total BTEX	<0.300	0.300	12/18/2020	ND					

Surrogate: 4-Bromofluorobenzene (PID) 101 % 73.3-129

Chloride, SM4500Cl-B		mg/kg		Analyzed By: GM					
Analyte	Result	Reporting Limit	Analyzed	Method Blank	BS	% Recovery	True Value QC	RPD	Qualifier
Chloride	224	16.0	12/18/2020	ND	400	100	400	0.00	

TPH 8015M		mg/kg		Analyzed By: MS					
Analyte	Result	Reporting Limit	Analyzed	Method Blank	BS	% Recovery	True Value QC	RPD	Qualifier
GRO C6-C10*	<10.0	10.0	12/18/2020	ND	204	102	200	0.944	
DRO >C10-C28*	<10.0	10.0	12/18/2020	ND	214	107	200	2.02	
EXT DRO >C28-C36	<10.0	10.0	12/18/2020	ND					

Surrogate: 1-Chlorooctane 93.6 % 44.3-144

Surrogate: 1-Chlorooctadecane 90.8 % 42.2-156

Cardinal Laboratories

*=Accredited Analyte

PLEASE NOTE: Liability and Damages. Cardinal's liability and client's exclusive remedy for any claim arising, whether based in contract or tort, shall be limited to the amount paid by client for analyses. All claims, including those for negligence and any other cause whatsoever shall be deemed waived unless made in writing and received by Cardinal within thirty (30) days after completion of the applicable service. In no event shall Cardinal be liable for incidental or consequential damages, including, without limitation, business interruptions, loss of use, or loss of profits incurred by client, its subsidiaries, affiliates or successors arising out of or related to the performance of the services hereunder by Cardinal, regardless of whether such claim is based upon any of the above stated reasons or otherwise. Results relate only to the samples identified above. This report shall not be reproduced except in full with written approval of Cardinal Laboratories.

Celey D. Keene, Lab Director/Quality Manager



PHONE (575) 393-2326 ° 101 E. MARLAND ° HOBBS, NM 88240

Analytical Results For:

BBC International, Inc.
 Cliff Brunson
 P.O. Box 805
 Hobbs NM, 88241
 Fax To: (575) 397-0397

Received:	12/17/2020	Sampling Date:	12/17/2020
Reported:	12/18/2020	Sampling Type:	Soil
Project Name:	LENGTH CC 6-7 FED COM #22H	Sampling Condition:	Cool & Intact
Project Number:	(4- 2 - 19)	Sample Received By:	Tamara Oldaker
Project Location:	OXY - EDDY CO NM		

Sample ID: BS 19 A (H003308-02)

BTX 8021B		mg/kg		Analyzed By: MS						
Analyte	Result	Reporting Limit	Analyzed	Method Blank	BS	% Recovery	True Value QC	RPD	Qualifier	
Benzene*	<0.050	0.050	12/18/2020	ND	1.95	97.4	2.00	1.79		
Toluene*	<0.050	0.050	12/18/2020	ND	1.87	93.6	2.00	1.46		
Ethylbenzene*	<0.050	0.050	12/18/2020	ND	1.93	96.5	2.00	1.85		
Total Xylenes*	<0.150	0.150	12/18/2020	ND	5.50	91.7	6.00	1.71		
Total BTX	<0.300	0.300	12/18/2020	ND						

Surrogate: 4-Bromofluorobenzene (PID) 99.7 % 73.3-129

Chloride, SM4500CI-B		mg/kg		Analyzed By: GM					
Analyte	Result	Reporting Limit	Analyzed	Method Blank	BS	% Recovery	True Value QC	RPD	Qualifier
Chloride	192	16.0	12/18/2020	ND	416	104	400	3.92	

TPH 8015M		mg/kg		Analyzed By: MS					
Analyte	Result	Reporting Limit	Analyzed	Method Blank	BS	% Recovery	True Value QC	RPD	Qualifier
GRO C6-C10*	<10.0	10.0	12/18/2020	ND	204	102	200	0.944	
DRO >C10-C28*	<10.0	10.0	12/18/2020	ND	214	107	200	2.02	
EXT DRO >C28-C36	<10.0	10.0	12/18/2020	ND					

Surrogate: 1-Chlorooctane 93.1 % 44.3-144

Surrogate: 1-Chlorooctadecane 91.1 % 42.2-156

Cardinal Laboratories

*=Accredited Analyte

PLEASE NOTE: Liability and Damages. Cardinal's liability and client's exclusive remedy for any claim arising, whether based in contract or tort, shall be limited to the amount paid by client for analyses. All claims, including those for negligence and any other cause whatsoever shall be deemed waived unless made in writing and received by Cardinal within thirty (30) days after completion of the applicable service. In no event shall Cardinal be liable for incidental or consequential damages, including, without limitation, business interruptions, loss of use, or loss of profits incurred by client, its subsidiaries, affiliates or successors arising out of or related to the performance of the services hereunder by Cardinal, regardless of whether such claim is based upon any of the above stated reasons or otherwise. Results relate only to the samples identified above. This report shall not be reproduced except in full with written approval of Cardinal Laboratories.

Celey D. Keene, Lab Director/Quality Manager



PHONE (575) 393-2326 ° 101 E. MARLAND ° HOBBS, NM 88240

Analytical Results For:

BBC International, Inc.
 Cliff Brunson
 P.O. Box 805
 Hobbs NM, 88241
 Fax To: (575) 397-0397

Received:	12/17/2020	Sampling Date:	12/17/2020
Reported:	12/18/2020	Sampling Type:	Soil
Project Name:	LENGTH CC 6-7 FED COM #22H	Sampling Condition:	Cool & Intact
Project Number:	(4- 2 - 19)	Sample Received By:	Tamara Oldaker
Project Location:	OXY - EDDY CO NM		

Sample ID: BS 23 A (H003308-03)

BTX 8021B		mg/kg		Analyzed By: MS						
Analyte	Result	Reporting Limit	Analyzed	Method Blank	BS	% Recovery	True Value QC	RPD	Qualifier	
Benzene*	<0.050	0.050	12/18/2020	ND	1.95	97.4	2.00	1.79		
Toluene*	<0.050	0.050	12/18/2020	ND	1.87	93.6	2.00	1.46		
Ethylbenzene*	<0.050	0.050	12/18/2020	ND	1.93	96.5	2.00	1.85		
Total Xylenes*	<0.150	0.150	12/18/2020	ND	5.50	91.7	6.00	1.71		
Total BTX	<0.300	0.300	12/18/2020	ND						

Surrogate: 4-Bromofluorobenzene (PID) 100 % 73.3-129

Chloride, SM4500CI-B		mg/kg		Analyzed By: GM						
Analyte	Result	Reporting Limit	Analyzed	Method Blank	BS	% Recovery	True Value QC	RPD	Qualifier	
Chloride	208	16.0	12/18/2020	ND	416	104	400	3.92		

TPH 8015M		mg/kg		Analyzed By: MS					
Analyte	Result	Reporting Limit	Analyzed	Method Blank	BS	% Recovery	True Value QC	RPD	Qualifier
GRO C6-C10*	<10.0	10.0	12/18/2020	ND	204	102	200	0.944	
DRO >C10-C28*	<10.0	10.0	12/18/2020	ND	214	107	200	2.02	
EXT DRO >C28-C36	<10.0	10.0	12/18/2020	ND					

Surrogate: 1-Chlorooctane 103 % 44.3-144

Surrogate: 1-Chlorooctadecane 101 % 42.2-156

Cardinal Laboratories

*=Accredited Analyte

PLEASE NOTE: Liability and Damages. Cardinal's liability and client's exclusive remedy for any claim arising, whether based in contract or tort, shall be limited to the amount paid by client for analyses. All claims, including those for negligence and any other cause whatsoever shall be deemed waived unless made in writing and received by Cardinal within thirty (30) days after completion of the applicable service. In no event shall Cardinal be liable for incidental or consequential damages, including, without limitation, business interruptions, loss of use, or loss of profits incurred by client, its subsidiaries, affiliates or successors arising out of or related to the performance of the services hereunder by Cardinal, regardless of whether such claim is based upon any of the above stated reasons or otherwise. Results relate only to the samples identified above. This report shall not be reproduced except in full with written approval of Cardinal Laboratories.

Celey D. Keene, Lab Director/Quality Manager



PHONE (575) 393-2326 ° 101 E. MARLAND ° HOBBS, NM 88240

Analytical Results For:

BBC International, Inc.
 Cliff Brunson
 P.O. Box 805
 Hobbs NM, 88241
 Fax To: (575) 397-0397

Received:	12/17/2020	Sampling Date:	12/17/2020
Reported:	12/18/2020	Sampling Type:	Soil
Project Name:	LENGTH CC 6-7 FED COM #22H	Sampling Condition:	Cool & Intact
Project Number:	(4- 2 - 19)	Sample Received By:	Tamara Oldaker
Project Location:	OXY - EDDY CO NM		

Sample ID: BS 24 A (H003308-04)

BTEx 8021B		mg/kg		Analyzed By: MS						
Analyte	Result	Reporting Limit	Analyzed	Method Blank	BS	% Recovery	True Value QC	RPD	Qualifier	
Benzene*	<0.050	0.050	12/18/2020	ND	1.95	97.4	2.00	1.79		
Toluene*	<0.050	0.050	12/18/2020	ND	1.87	93.6	2.00	1.46		
Ethylbenzene*	<0.050	0.050	12/18/2020	ND	1.93	96.5	2.00	1.85		
Total Xylenes*	<0.150	0.150	12/18/2020	ND	5.50	91.7	6.00	1.71		
Total BTEx	<0.300	0.300	12/18/2020	ND						

Surrogate: 4-Bromofluorobenzene (PID) 101 % 73.3-129

Chloride, SM4500CI-B		mg/kg		Analyzed By: GM						
Analyte	Result	Reporting Limit	Analyzed	Method Blank	BS	% Recovery	True Value QC	RPD	Qualifier	
Chloride	240	16.0	12/18/2020	ND	416	104	400	3.92		

TPH 8015M		mg/kg		Analyzed By: MS					
Analyte	Result	Reporting Limit	Analyzed	Method Blank	BS	% Recovery	True Value QC	RPD	Qualifier
GRO C6-C10*	<10.0	10.0	12/18/2020	ND	204	102	200	0.944	
DRO >C10-C28*	<10.0	10.0	12/18/2020	ND	214	107	200	2.02	
EXT DRO >C28-C36	<10.0	10.0	12/18/2020	ND					

Surrogate: 1-Chlorooctane 95.1 % 44.3-144

Surrogate: 1-Chlorooctadecane 92.8 % 42.2-156

Cardinal Laboratories

*=Accredited Analyte

PLEASE NOTE: Liability and Damages. Cardinal's liability and client's exclusive remedy for any claim arising, whether based in contract or tort, shall be limited to the amount paid by client for analyses. All claims, including those for negligence and any other cause whatsoever shall be deemed waived unless made in writing and received by Cardinal within thirty (30) days after completion of the applicable service. In no event shall Cardinal be liable for incidental or consequential damages, including, without limitation, business interruptions, loss of use, or loss of profits incurred by client, its subsidiaries, affiliates or successors arising out of or related to the performance of the services hereunder by Cardinal, regardless of whether such claim is based upon any of the above stated reasons or otherwise. Results relate only to the samples identified above. This report shall not be reproduced except in full with written approval of Cardinal Laboratories.

Celey D. Keene, Lab Director/Quality Manager



PHONE (575) 393-2326 ° 101 E. MARLAND ° HOBBS, NM 88240

Analytical Results For:

BBC International, Inc.
 Cliff Brunson
 P.O. Box 805
 Hobbs NM, 88241
 Fax To: (575) 397-0397

Received:	12/17/2020	Sampling Date:	12/17/2020
Reported:	12/18/2020	Sampling Type:	Soil
Project Name:	LENGTH CC 6-7 FED COM #22H	Sampling Condition:	Cool & Intact
Project Number:	(4- 2 - 19)	Sample Received By:	Tamara Oldaker
Project Location:	OXY - EDDY CO NM		

Sample ID: BS 25 A (H003308-05)

BTX 8021B		mg/kg		Analyzed By: MS						
Analyte	Result	Reporting Limit	Analyzed	Method Blank	BS	% Recovery	True Value QC	RPD	Qualifier	
Benzene*	<0.050	0.050	12/18/2020	ND	1.95	97.4	2.00	1.79		
Toluene*	<0.050	0.050	12/18/2020	ND	1.87	93.6	2.00	1.46		
Ethylbenzene*	<0.050	0.050	12/18/2020	ND	1.93	96.5	2.00	1.85		
Total Xylenes*	<0.150	0.150	12/18/2020	ND	5.50	91.7	6.00	1.71		
Total BTX	<0.300	0.300	12/18/2020	ND						

Surrogate: 4-Bromofluorobenzene (PID) 101 % 73.3-129

Chloride, SM4500CI-B		mg/kg		Analyzed By: GM						
Analyte	Result	Reporting Limit	Analyzed	Method Blank	BS	% Recovery	True Value QC	RPD	Qualifier	
Chloride	224	16.0	12/18/2020	ND	416	104	400	3.92		

TPH 8015M		mg/kg		Analyzed By: MS					
Analyte	Result	Reporting Limit	Analyzed	Method Blank	BS	% Recovery	True Value QC	RPD	Qualifier
GRO C6-C10*	<10.0	10.0	12/18/2020	ND	204	102	200	0.944	
DRO >C10-C28*	<10.0	10.0	12/18/2020	ND	214	107	200	2.02	
EXT DRO >C28-C36	<10.0	10.0	12/18/2020	ND					

Surrogate: 1-Chlorooctane 89.4 % 44.3-144

Surrogate: 1-Chlorooctadecane 88.1 % 42.2-156

Cardinal Laboratories

*=Accredited Analyte

PLEASE NOTE: Liability and Damages. Cardinal's liability and client's exclusive remedy for any claim arising, whether based in contract or tort, shall be limited to the amount paid by client for analyses. All claims, including those for negligence and any other cause whatsoever shall be deemed waived unless made in writing and received by Cardinal within thirty (30) days after completion of the applicable service. In no event shall Cardinal be liable for incidental or consequential damages, including, without limitation, business interruptions, loss of use, or loss of profits incurred by client, its subsidiaries, affiliates or successors arising out of or related to the performance of the services hereunder by Cardinal, regardless of whether such claim is based upon any of the above stated reasons or otherwise. Results relate only to the samples identified above. This report shall not be reproduced except in full with written approval of Cardinal Laboratories.

Celey D. Keene, Lab Director/Quality Manager



PHONE (575) 393-2326 ° 101 E. MARLAND ° HOBBS, NM 88240

Analytical Results For:

BBC International, Inc.
 Cliff Brunson
 P.O. Box 805
 Hobbs NM, 88241
 Fax To: (575) 397-0397

Received:	12/17/2020	Sampling Date:	12/17/2020
Reported:	12/18/2020	Sampling Type:	Soil
Project Name:	LENGTH CC 6-7 FED COM #22H	Sampling Condition:	Cool & Intact
Project Number:	(4- 2 - 19)	Sample Received By:	Tamara Oldaker
Project Location:	OXY - EDDY CO NM		

Sample ID: BS 26 A (H003308-06)

BTX 8021B		mg/kg		Analyzed By: MS						
Analyte	Result	Reporting Limit	Analyzed	Method Blank	BS	% Recovery	True Value QC	RPD	Qualifier	
Benzene*	<0.050	0.050	12/18/2020	ND	1.95	97.4	2.00	1.79		
Toluene*	<0.050	0.050	12/18/2020	ND	1.87	93.6	2.00	1.46		
Ethylbenzene*	<0.050	0.050	12/18/2020	ND	1.93	96.5	2.00	1.85		
Total Xylenes*	<0.150	0.150	12/18/2020	ND	5.50	91.7	6.00	1.71		
Total BTX	<0.300	0.300	12/18/2020	ND						

Surrogate: 4-Bromofluorobenzene (PID) 99.1 % 73.3-129

Chloride, SM4500CI-B		mg/kg		Analyzed By: GM						
Analyte	Result	Reporting Limit	Analyzed	Method Blank	BS	% Recovery	True Value QC	RPD	Qualifier	
Chloride	192	16.0	12/18/2020	ND	416	104	400	3.92		

TPH 8015M		mg/kg		Analyzed By: MS					
Analyte	Result	Reporting Limit	Analyzed	Method Blank	BS	% Recovery	True Value QC	RPD	Qualifier
GRO C6-C10*	<10.0	10.0	12/18/2020	ND	204	102	200	0.944	
DRO >C10-C28*	<10.0	10.0	12/18/2020	ND	214	107	200	2.02	
EXT DRO >C28-C36	<10.0	10.0	12/18/2020	ND					

Surrogate: 1-Chlorooctane 92.5 % 44.3-144

Surrogate: 1-Chlorooctadecane 91.2 % 42.2-156

Cardinal Laboratories

*=Accredited Analyte

PLEASE NOTE: Liability and Damages. Cardinal's liability and client's exclusive remedy for any claim arising, whether based in contract or tort, shall be limited to the amount paid by client for analyses. All claims, including those for negligence and any other cause whatsoever shall be deemed waived unless made in writing and received by Cardinal within thirty (30) days after completion of the applicable service. In no event shall Cardinal be liable for incidental or consequential damages, including, without limitation, business interruptions, loss of use, or loss of profits incurred by client, its subsidiaries, affiliates or successors arising out of or related to the performance of the services hereunder by Cardinal, regardless of whether such claim is based upon any of the above stated reasons or otherwise. Results relate only to the samples identified above. This report shall not be reproduced except in full with written approval of Cardinal Laboratories.

Celey D. Keene, Lab Director/Quality Manager



PHONE (575) 393-2326 ° 101 E. MARLAND ° HOBBS, NM 88240

Analytical Results For:

BBC International, Inc.
 Cliff Brunson
 P.O. Box 805
 Hobbs NM, 88241
 Fax To: (575) 397-0397

Received:	12/17/2020	Sampling Date:	12/17/2020
Reported:	12/18/2020	Sampling Type:	Soil
Project Name:	LENGTH CC 6-7 FED COM #22H	Sampling Condition:	Cool & Intact
Project Number:	(4- 2 - 19)	Sample Received By:	Tamara Oldaker
Project Location:	OXY - EDDY CO NM		

Sample ID: BS 27 A (H003308-07)

BTX 8021B		mg/kg		Analyzed By: MS						
Analyte	Result	Reporting Limit	Analyzed	Method Blank	BS	% Recovery	True Value QC	RPD	Qualifier	
Benzene*	<0.050	0.050	12/18/2020	ND	1.95	97.4	2.00	1.79		
Toluene*	<0.050	0.050	12/18/2020	ND	1.87	93.6	2.00	1.46		
Ethylbenzene*	<0.050	0.050	12/18/2020	ND	1.93	96.5	2.00	1.85		
Total Xylenes*	<0.150	0.150	12/18/2020	ND	5.50	91.7	6.00	1.71		
Total BTX	<0.300	0.300	12/18/2020	ND						

Surrogate: 4-Bromofluorobenzene (PID) 101 % 73.3-129

Chloride, SM4500CI-B		mg/kg		Analyzed By: GM					
Analyte	Result	Reporting Limit	Analyzed	Method Blank	BS	% Recovery	True Value QC	RPD	Qualifier
Chloride	192	16.0	12/18/2020	ND	416	104	400	3.92	

TPH 8015M		mg/kg		Analyzed By: MS					
Analyte	Result	Reporting Limit	Analyzed	Method Blank	BS	% Recovery	True Value QC	RPD	Qualifier
GRO C6-C10*	<10.0	10.0	12/18/2020	ND	204	102	200	0.944	
DRO >C10-C28*	<10.0	10.0	12/18/2020	ND	214	107	200	2.02	
EXT DRO >C28-C36	<10.0	10.0	12/18/2020	ND					

Surrogate: 1-Chlorooctane 89.8 % 44.3-144

Surrogate: 1-Chlorooctadecane 89.1 % 42.2-156

Cardinal Laboratories

*=Accredited Analyte

PLEASE NOTE: Liability and Damages. Cardinal's liability and client's exclusive remedy for any claim arising, whether based in contract or tort, shall be limited to the amount paid by client for analyses. All claims, including those for negligence and any other cause whatsoever shall be deemed waived unless made in writing and received by Cardinal within thirty (30) days after completion of the applicable service. In no event shall Cardinal be liable for incidental or consequential damages, including, without limitation, business interruptions, loss of use, or loss of profits incurred by client, its subsidiaries, affiliates or successors arising out of or related to the performance of the services hereunder by Cardinal, regardless of whether such claim is based upon any of the above stated reasons or otherwise. Results relate only to the samples identified above. This report shall not be reproduced except in full with written approval of Cardinal Laboratories.

Celey D. Keene, Lab Director/Quality Manager



PHONE (575) 393-2326 ° 101 E. MARLAND ° HOBBS, NM 88240

Analytical Results For:

BBC International, Inc.
 Cliff Brunson
 P.O. Box 805
 Hobbs NM, 88241
 Fax To: (575) 397-0397

Received:	12/17/2020	Sampling Date:	12/17/2020
Reported:	12/18/2020	Sampling Type:	Soil
Project Name:	LENGTH CC 6-7 FED COM #22H	Sampling Condition:	Cool & Intact
Project Number:	(4- 2 - 19)	Sample Received By:	Tamara Oldaker
Project Location:	OXY - EDDY CO NM		

Sample ID: BS 28 A (H003308-08)

BTX 8021B		mg/kg		Analyzed By: MS						
Analyte	Result	Reporting Limit	Analyzed	Method Blank	BS	% Recovery	True Value QC	RPD	Qualifier	
Benzene*	<0.050	0.050	12/18/2020	ND	1.95	97.4	2.00	1.79		
Toluene*	<0.050	0.050	12/18/2020	ND	1.87	93.6	2.00	1.46		
Ethylbenzene*	<0.050	0.050	12/18/2020	ND	1.93	96.5	2.00	1.85		
Total Xylenes*	<0.150	0.150	12/18/2020	ND	5.50	91.7	6.00	1.71		
Total BTX	<0.300	0.300	12/18/2020	ND						

Surrogate: 4-Bromofluorobenzene (PID) 101 % 73.3-129

Chloride, SM4500CI-B		mg/kg		Analyzed By: GM						
Analyte	Result	Reporting Limit	Analyzed	Method Blank	BS	% Recovery	True Value QC	RPD	Qualifier	
Chloride	288	16.0	12/18/2020	ND	416	104	400	3.92		

TPH 8015M		mg/kg		Analyzed By: MS					
Analyte	Result	Reporting Limit	Analyzed	Method Blank	BS	% Recovery	True Value QC	RPD	Qualifier
GRO C6-C10*	<10.0	10.0	12/18/2020	ND	204	102	200	0.944	
DRO >C10-C28*	<10.0	10.0	12/18/2020	ND	214	107	200	2.02	
EXT DRO >C28-C36	<10.0	10.0	12/18/2020	ND					

Surrogate: 1-Chlorooctane 94.6 % 44.3-144

Surrogate: 1-Chlorooctadecane 92.6 % 42.2-156

Cardinal Laboratories

*=Accredited Analyte

PLEASE NOTE: Liability and Damages. Cardinal's liability and client's exclusive remedy for any claim arising, whether based in contract or tort, shall be limited to the amount paid by client for analyses. All claims, including those for negligence and any other cause whatsoever shall be deemed waived unless made in writing and received by Cardinal within thirty (30) days after completion of the applicable service. In no event shall Cardinal be liable for incidental or consequential damages, including, without limitation, business interruptions, loss of use, or loss of profits incurred by client, its subsidiaries, affiliates or successors arising out of or related to the performance of the services hereunder by Cardinal, regardless of whether such claim is based upon any of the above stated reasons or otherwise. Results relate only to the samples identified above. This report shall not be reproduced except in full with written approval of Cardinal Laboratories.

Celey D. Keene, Lab Director/Quality Manager



PHONE (575) 393-2326 ° 101 E. MARLAND ° HOBBS, NM 88240

Notes and Definitions

ND	Analyte NOT DETECTED at or above the reporting limit
RPD	Relative Percent Difference
**	Samples not received at proper temperature of 6°C or below.
***	Insufficient time to reach temperature.
-	Chloride by SM4500Cl-B does not require samples be received at or below 6°C Samples reported on an as received basis (wet) unless otherwise noted on report

Cardinal Laboratories

*=Accredited Analyte

PLEASE NOTE: Liability and Damages. Cardinal's liability and client's exclusive remedy for any claim arising, whether based in contract or tort, shall be limited to the amount paid by client for analyses. All claims, including those for negligence and any other cause whatsoever shall be deemed waived unless made in writing and received by Cardinal within thirty (30) days after completion of the applicable service. In no event shall Cardinal be liable for incidental or consequential damages, including, without limitation, business interruptions, loss of use, or loss of profits incurred by client, its subsidiaries, affiliates or successors arising out of or related to the performance of the services hereunder by Cardinal, regardless of whether such claim is based upon any of the above stated reasons or otherwise. Results relate only to the samples identified above. This report shall not be reproduced except in full with written approval of Cardinal Laboratories.

A handwritten signature in cursive script, appearing to read "Celey D. Keene", written in black ink.

Celey D. Keene, Lab Director/Quality Manager



CARDINAL LABORATORIES

101 East Marland, Hobbs, NM 88240

(505) 393-2326 FAX (505) 393-2476

CHAIN-OF-CUSTODY AND ANALYSIS REQUEST

Page 11 of 11

Company Name: BBC International, Inc.				BILL TO				ANALYSIS REQUEST											
Project Manager: Cliff Brunson				P.O. #:															
Address: P.O. Box 805				Company: OXY															
City: Hobbs		State: NM Zip: 88241		Attn: WADE															
Phone #: 575-397-6388		Fax #: 575-397-0397		Address:															
Project #:		Project Owner: Oxy		City:															
Project Name: LENGTH CC 6-7 FED COM 22H (4-2-19)		State: Zip:		Phone #:															
Project Location: EDDY COUNTY, NM				Fax #:															
Sampler Name: Simon Rendon																			

FOR LAB USE ONLY		GRAB OR (C)OMP. # CONTAINERS	MATRIX					PRESERV.		SAMPLING		CL	BTEX	TPH	EXT	
Lab I.D.	Sample I.D.		GROUNDWATER	WASTEWATER	SOIL	OIL	SLUDGE	OTHER :	ACID/BASE:	ICE / COOL	OTHER :					DATE
4003308																
1	BS12A	G										12-17-20	9:42	✓	✓	✓
2	BS19A											12-17-20	9:57	✓	✓	✓
3	BS23A											12-17-20	10:15	✓	✓	✓
4	BS24A											12-17-20	10:39	✓	✓	✓
5	BS25A											12-17-20	11:12	✓	✓	✓
6	BS26A											12-17-20	11:30	✓	✓	✓
7	BS27A											12-17-20	11:48	✓	✓	✓
8	BS28A											12-17-20	12:08	✓	✓	✓

PLEASE NOTE: Liability and Damages. Cardinal's liability and client's exclusive remedy for any claim arising whether based in contract or tort, shall be limited to the amount paid by the client for the analyses. All claims including those for negligence and any other cause whatsoever shall be deemed waived unless made in writing and received by Cardinal within 30 days after completion of the applicable service. In no event shall Cardinal be liable for incidental or consequential damages, including without limitation, business interruptions, loss of use, or loss of profits incurred by client, its subsidiaries, affiliates or successors arising out of or related to the performance of services hereunder by Cardinal, regardless of whether such claim is based upon any of the above stated reasons or otherwise.

Relinquished By:	Date: 12-17-20 Time: 1655	Received By:	Phone Result: <input type="checkbox"/> Yes <input type="checkbox"/> No	Add'l Phone #:
Relinquished By:	Date:	Received By:	Fax Result: <input type="checkbox"/> Yes <input type="checkbox"/> No	Add'l Fax #:
Time:			REMARKS:	
Delivered By: (Circle One) Sampler - UPS - Bus - Other: - 2.6c #113			Sample Condition Cool Intact <input checked="" type="checkbox"/> Yes <input type="checkbox"/> No <input type="checkbox"/> Yes <input type="checkbox"/> No	
			CHECKED BY: (Initials) T.O.	

RUSH !!

† Cardinal cannot accept verbal changes. Please fax written changes to 505-393-2476



USGS Home
Contact USGS
Search USGS

National Water Information System: Web Interface

USGS Water Resources

Data Category:
Groundwater

Geographic Area:
New Mexico

GO

Click to hideNews Bulletins

- Introducing The Next Generation of USGS Water Data for the Nation
- Full News

Groundwater levels for New Mexico

Click to hide state-specific text

Search Results -- 1 sites found

Agency code = usgs
site_no list =

- 321355104012001

Minimum number of levels = 1
[Save file of selected sites](#) to local disk for future upload

USGS 321355104012001 24S.29E.07.14444

Eddy County, New Mexico
Latitude 32°13'55", Longitude 104°01'20" NAD27
Land-surface elevation 2,983 feet above NAVD88
The depth of the well is 160 feet below land surface.
This well is completed in the Castile Formation (312CSTL) local aquifer.

Output formats

Table of data

Tab-separated data

Graph of data

Reselect period

Date	Time	? Water-level date-time accuracy	Water level, feet below land surface	Water level, feet above specific vertical datum	Referenced vertical datum	? Water-level accuracy	? Status	? Method of measurement	? Measuring agency	? Source of measurem
1983-02-01			D47.14				2		U	
1987-10-16			D51.84				2		U	
1988-02-11			D52.19				2		U	
1992-10-20			D51.78				2		S	

Explanation

Section	Code	Description
Water-level date-time accuracy	D	Date is accurate to the Day
Water-level accuracy	2	Water level accuracy to nearest hundredth of a foot
Status		The reported water-level measurement represents a static level
Method of measurement	S	Steel-tape measurement.
Method of measurement	U	Unknown method.
Measuring agency		Not determined
Source of measurement	U	Source is unknown.
Water-level approval status	A	Approved for publication -- Processing and review completed.

[Questions about sites/data?](#)
[Feedback on this web site](#)
[Automated retrievals](#)
[Help](#)
[Data Tips](#)
[Explanation of terms](#)
[Subscribe for system changes](#)
[News](#)

[Accessibility](#) [Plug-Ins](#) [FOIA](#) [Privacy](#) [Policies and Notices](#)

[U.S. Department of the Interior](#) | [U.S. Geological Survey](#)



Title: Groundwater for New Mexico: Water Levels

URL: <https://nwis.waterdata.usgs.gov/nm/nwis/gwlevels?>

Page Contact Information: [New Mexico Water Data Maintainer](#)

Page Last Modified: 2019-09-25 12:31:42 EDT

0.53 0.5 nadww02

District I
1625 N. French Dr., Hobbs, NM 88240
Phone:(575) 393-6161 Fax:(575) 393-0720
District II
811 S. First St., Artesia, NM 88210
Phone:(575) 748-1283 Fax:(575) 748-9720
District III
1000 Rio Brazos Rd., Aztec, NM 87410
Phone:(505) 334-6178 Fax:(505) 334-6170
District IV
1220 S. St Francis Dr., Santa Fe, NM 87505
Phone:(505) 476-3470 Fax:(505) 476-3462

State of New Mexico
Energy, Minerals and Natural Resources
Oil Conservation Division
1220 S. St Francis Dr.
Santa Fe, NM 87505

CONDITIONS

Action 21312

CONDITIONS OF APPROVAL

Operator:			OGRID:	Action Number:	Action Type:
OXY USA INC P.O. Box 4294 Houston, TX772104294			16696	21312	C-141
OCD Reviewer	Condition				
chensley	When submitting future reports, please submit the depth in the data table. Especially on confirmation samples used as justification of closure criteria.				