



Proposed Remediation Plan

**ETC Texas Pipeline, Ltd
Cotton Draw Pipeline**

Eddy County, New Mexico

Latitude 32.112443 North, Longitude 103.718743 West

Unit Letter "K", Section 19, Township 25 South, Range 32 East

NMOCD Incident # nAPP2207343782

Prepared By:

Haz Mat Special Services, LLC

1909 E I-20

Midland, Tx 79701

Eddie Gaytan

Eddie Gaytan

Operations Manager

Hgaytan@hazmatspecialservices.com

Table Of Contents

Introduction

Project Information

1.0 Background

2.0 NMOCD Site Classification

3.0 Delineation Activities

4.0 Proposed Actions

5.0 Sampling Plan

Estimated Timeline and Remediation Soil Volume

Restoration, Reclamation, and Re-Vegetation

Limitations

Distributions

Figures

Figure 1 – Topographic Map

Figure 2 – OSE Map

Figure 3 – USGS Map

Figure 4 – Delineation Map

Tables

Table 1 –NMOCD Closure & Reclamation Standard

Table 2 - Summary of Soil Sample Laboratory Analytical Results

Attachments

Attachment I – Site Photographs

Attachment II – Depth to Groundwater

Attachment III – Field Data

Attachment IV – Laboratory Analytical Reports

Attachment V – NMOCD Form C-141 Remediation Pages



June 9, 2022

New Mexico Energy, Minerals & Natural Resources
NMOCD District 1
C/O: Mike Bratcher & Robert Hamlet
1625 N French Drive
Hobbs, NM 88240

Bureau Of Land Management
C/O: Shelly Tucker
620 E. Green Street
Carlsbad, NM 8820

ETC Texas Pipeline, Ltd.
600 N Marienfeld St. Suite 700
Midland, Tx 79701

RE: Remediation Work Plan
ETC, Texas Pipeline
Cotton Draw Pipeline
Latitude 32.112443 North, Longitude 103.718743 West
Unit Letter "K", Section 19, Township 25 South, Range 32 East
Eddy County, New Mexico
NMOCD Incident # nAPP2207343782

Haz Mat Special Services, LLC, (HMSS), on behalf of ETC Texas Pipeline, Ltd. submits this *Proposed Remediation Work Plan* to the New Mexico Oil Conservation Division (NMOCD). This Report provides documentation of detailed sampling and proposed remedial actions to address the Cotton Draw Pipeline release. This report serves as a condensed update on field activities undertaken at the afore referenced Site.



Haz Mat Special Services

Project Information

The site is in Unit Letter K (NE/SW), Section 19, Township 25 South, Range 32 East. The spill area measures approximately 4,000 sq. ft. and is approximately 31 miles west of Jal, New Mexico on Federal Land. Site Map included, respectively. Latitude 32.112443 North, Longitude 103.718743

1.0 Background

On March 2, 2022, a release was discovered on the Cotton Draw Pipeline. The release was attributed to corrosion of the pipeline segment releasing approximately 22.1 BBLS of pipeline liquid and 60 mcf of natural gas with zero recovered.

Previously submitted pages of the NMOCD Form C-141 are available on the NMOCD Imaging System. Remediation pages of the NMOCD Form C-141 are included as Attachment V. Topographic Map, OSE POD Locations Map, and USGS Well Locations Map, Delineation Map, and Proposed Excavation Map are included as Figure 1, Figure 2, Figure 3, Figure 4, and Figure 5, respectively.

2.0 NMOCD Site Classification:

A search of the New Mexico Office of the State Engineer (NMOSE) and United States Geological Survey (USGS) groundwater databases was completed to determine the horizontal distance to known water sources within a half-mile radius of the Release Site. Probable groundwater depth was determined using data generated by numeric models based on available water well data and published information. Estimated depth to groundwater is approximately 350' Bgs. Data from groundwater research is not within 25 years and is not accordance with NMOCD Rules and Regulations. Therefor, Karst mapping indicates the site is in a Low Karst designated area. Depth to groundwater information is provided as Attachment II and the results are depicted on Figures 1, 2, and 3.

Utilizing this information, the NMOCD Closure Criteria for the Site were determined as follows.



Table 1

>100 feet	Chloride***	EPA 300.0 or SM4500 C1 B	20,000 mg/kg	600 mg/kg
	TPH (GRO+DRO+MRO)	EPA SW-846 Method 8015M	2,500 mg/kg	100 mg/kg
	GRO+DRO	EPA SW-846 Method 8015M	1,000 mg/kg	N/A mg/kg
	BTEX	EPA SW-846 Method 8021B or 8260B	50 mg/kg	50 mg/kg
	Benzene	EPA SW-846 Method 8021B or 8260B	10 mg/kg	10 mg/kg

* Measured in milligrams per kilogram (mg/kg)

† Table I, Section 19.15.29.12 of the New Mexico Administrative Code (NMAC).

‡ The NMOCD Reclamation Standard applies only to the top 4' of soil in non-production areas. Section 19.15.29.13 D. (1) NMAC.

3.0 Delineation Activities

On April 28, 2022, HMSS, conducted an initial site assessment. During the initial assessment, a series of soil bores were advanced within the release margins to determine the vertical extent of impacted soil. In addition, sample test trenches were advanced along the inferred edges of the affected area to determine the horizontal extent of contamination. During the advancement of the soil bores and test trenches, soil samples were collected, and field screened for the presence of volatile organic compounds via a photoionization detector (PID) and chloride concentrations utilizing a Hach Quan tab® chloride test kit.

- Based on field observations and field test data, HMSS collected (30) thirty representative soil samples for laboratory analysis.
 - Background sample and delineation soil samples represented by SP 1- SP 5 and HZ1-HZ8 were submitted to the laboratory for analysis of BTEX, TPH, and chloride. Laboratory analytical results indicated BTEX, TPH or chloride concentrations were below the applicable NMOCD Closure Criteria and/or the NMOCD Reclamation Standard except for SP1-Surf, SP2-Surf, SP3-5, SP4-Surf, SP5-Surf, SP5-5', and HZ6-Surf in each of the submitted soil samples. On May 18, 2022, delineation activities resumed on location. Remaining samples were collected and submitted laboratory for analysis of BTEX, TPH, and chloride. Laboratory analytical results indicated BTEX, TPH or chloride concentrations were below the applicable NMOCD Closure Criteria and/or the NMOCD Reclamation Standard apart from SP5-5' and the Horizontal extent was adequately defined.



A delineation Sample Location Map is provided as Figure 4. A summary of Soil Sample Laboratory Analytical Results is provided as Table 2, and Laboratory Analytical Reports are provided as Attachment IV.

4.0 PROPOSED ACTIONS

Based on the initial site assessment, and laboratory analytical results made during the initial site assessment, the following remediation activities are proposed to advance the site toward an approved closure:

- All visible staining will be removed and hauled to a state approved disposal facility.
- Based on soil sample analysis and PID readings, the site appears to be delineated both vertically and horizontally apart from SP5 -5'. Full delineation will be completed during final excavation activities.
- ETC respectfully proposes Excavation depths as follows:
 - SP2-Excavate approximately 2' Bgs or until or until laboratory confirmation results show Chloride, TPH, and BTEX are under the NMOCD Closure Criteria reclamation standard.
 - SP3- Excavate approximately 6' Bgs or until or until laboratory confirmation results show Chloride, TPH, and BTEX are under the NMOCD Closure Criteria reclamation standard
 - SP4- Excavate approximately 6" Bgs or until or until laboratory confirmation results show Chloride, TPH, and BTEX are under the NMOCD Closure Criteria reclamation standard.
 - SP5 -- Excavate approximately 7' Bgs or until or until laboratory confirmation results show Chloride, TPH, and BTEX are under the NMOCD Closure Criteria reclamation standard
 - Area represented by HZ 6 excavate a 200sq ft area approximately 1-2' Bgs or until or until laboratory confirmation results show Chloride, TPH, and BTEX are under the NMOCD Closure Criteria reclamation standard.
- GPS time stamped photographs of excavation activities.
- After excavation, confirmation bottom hole and sidewall samples will be collected representing every 200sq.ft and sent to a lab and tested for TPH, BTEX and Chloride. All final confirmation analytical results and remediation activities will be documented in the *Request for Closure Report* submitted after final remediation activities are complete.
- Excavated soil will be transported for disposal to an NMOCD permitted disposal facility.
- Backfill will be sourced from native like material, clean soil, sourced locally from nearby area, approved BLM location.



- All areas will then be reseeded in the appropriate season with a BLM approved seed mix
- A *Request for Closure Report* will be submitted detailing all remediation activities conducted in accordance with the NMOCD.

A Proposed Excavation map is provided as Figure 5, respectively.

5.0 Sampling Plan:

Upon completion of excavation activities, confirmation five-point composite soil samples will be collected from the floor and sidewalls of the excavated area representing every 200 square feet.

Estimated Timeline and Remediation Soil Volume:

Proposed estimated excavation volume: *Approximately 870 cubic yards*

Remediation activities are expected to be completed within 90 days of receiving necessary approval of this *Remediation Work Plan*.

Restoration, Reclamation, and Re-Vegetation:

Based upon laboratory analytical results from confirmation soil samples, the excavated areas will be backfilled with locally sourced clean, non-impacted “like” material placed at or near relative positions. The affected area will be contoured and/or compacted to achieve erosion control, stability, and preservation of surface water flow to the extent practicable. Affected areas not on production pads and/or lease roads will be reseeded with an agency and/or landowner-approved seed mixture free of noxious weeds during the first favorable growing season following closure of the site.



Limitations:

Haz Mat Special Services, LLC, has prepared this *Site Assessment and Proposed Remediation Request* to the best of its ability. No other warranty, expressed or implied, is made or intended. HMSS has examined and relied upon documents referenced in the report and on oral statements made by certain individuals. HMSS has not conducted an independent examination of the facts contained in referenced materials and statements. HMSS has presumed the genuineness of these documents and statements and that the information provided therein is true and accurate. HMSS notes that the facts and conditions referenced in this report may change over time, and the conclusions and recommendations set forth herein are applicable only to the facts and conditions as described at the time of this report. HMSS has prepared the report in a professional manner, using the degree of skill and care exercised by similar environmental consultants.

This report has been prepared for the benefit of ETC, Texas Pipeline Ltd. Use of the information contained in this report is prohibited with consent of Haz Mat Special Services and/or Etc. Texas Pipeline, Ltd.

Distribution:**ETC, Texas Pipeline Ltd.**

600 N. Marienfeld St., Suite 700
Midland, TX 79701

New Mexico Energy, Minerals and Natural Resources Department

Oil Conservation Division, District 1
1625 N. French Drive
Hobbs, NM 88240

United States Department of the Interior

Bureau Of Land Management
620 E. Greene Street
Carlsbad, NM 88220



Haz Mat Special Services

TABLE 1
Summary of Soil Sample Laboratory Analytical Results
ETC Texas Pipeline, Ltd.

NMOCD Ref. #: nAPP2207343782											
Sample ID	Date	Depth (ft)	Soil Status	Benzene (mg/kg)	BTEX (mg/kg)	GRO C ₆ -C ₁₀ (mg/kg)	DRO C ₁₀ -C ₂₈ (mg/kg)	GRO + DRO C ₆ -C ₂₈ (mg/kg)	ORO C ₂₈ -C ₃₆ (mg/kg)	TPH C ₆ -C ₃₆ (mg/kg)	Chloride (mg/kg)
SP 1	4/28/22	Surf	In-Situ	<0.050	<0.300	<10.0	<10.0	<10.0	<10.0	<10.0	96
	4/28/22	2'	In-Situ	<0.050	<0.300	<10.0	<10.0	<10.0	<10.0	<10.0	32
SP 2	5/18/22	Surf	In-Situ	<0.050	19.2	359	2,650	3009	36.6	3,045.6	2,240
	5/18/22	4'	In-Situ	<0.050	<0.300	<10.0	<10.0	0	<10.0	<10.0	48
SP 3	5/18/22	5'	In-Situ	<0.500	153	3170	5,080	8250	182	8,432.0	32
	5/18/22	6'	In-Situ	<0.050	<0.300	<10.0	<10.0	<10.0	<10.0	<10.0	32
SP 4	4/28/22	Surf	In-Situ	<0.050	<0.300	<10.0	107	107	10.2	117.2	32
	4/28/22	2'	In-Situ	<0.050	<0.300	<10.0	<10.0	<10.0	<10.0	<10.0	<16.0
SP5	5/18/22	Surf	In-Situ	<0.050	<0.300	<10.0	<10.0	<10.0	<10.0	<10.0	32
	5/18/22	5'	In-Situ	<0.050	27.6	704	1990	2694	62.5	2,756.5	64
Background	4/28/22	Surf	In-Situ	<0.050	<0.300	<10.0	<10.0	<10.0	<10.0	<10.0	32
HZ1	4/28/22	Surf	In-Situ	<0.050	<0.300	<10.0	<10.0	<10.0	<10.0	<10.0	32
	4/28/22	1'	In-Situ	<0.050	<0.300	<10.0	<10.0	<10.0	<10.0	<10.0	16
HZ2	4/28/22	Surf	In-Situ	<0.050	<0.300	<10.0	<10.0	<10.0	<10.0	<10.0	<16.0
	4/28/22	1'	In-Situ	<0.050	<0.300	<10.0	<10.0	<10.0	<10.0	<10.0	<16.0
HZ3	4/28/22	Surf	In-Situ	<0.050	<0.300	<10.0	<10.0	<10.0	<10.0	<10.0	<16.0
	4/28/22	1'	In-Situ	<0.050	<0.300	<10.0	<10.0	<10.0	<10.0	<10.0	16
HZ4	5/18/22	Surf	In-Situ	<0.050	<0.300	10.5	23.7	34.2	<10.0	34.2	80
	5/18/22	1'	In-Situ	<0.050	<0.300	<10.0	39.7	39.7	<10.0	39.7	48
HZ5	5/18/22	Surf	In-Situ	<0.050	<0.300	<10.0	38	38	<10.0	38.0	64
	5/18/22	1'	In-Situ	<0.050	<0.300	<10.0	33	33	<10.0	33.0	48
HZ6	4/28/22	Surf	In-Situ	<0.050	<0.300	<10.0	16.4	16.4	<10.0	16.4	1420
	4/28/22	8'	In-Situ	<0.050	<0.300	<10.0	<10.0	<10.0	<10.0	<10.0	16
HZ6-A	5/18/22	Surf	In-Situ	<0.050	<0.300	<10.0	20.8	20.8	<10.0	20.8	16
	5/18/22	1'	In-Situ	<0.050	<0.300	<10.0	23.6	23.6	<10.0	23.6	16
HZ7	4/28/22	Surf	In-Situ	<0.050	<0.300	<10.0	<10.0	<10.0	<10.0	<10.0	32
	4/28/22	1'	In-Situ	<0.050	<0.300	<10.0	<10.0	<10.0	<10.0	<10.0	<16.0
HZ8	4/28/22	Surf	In-Situ	<0.050	<0.300	<10.0	<10.0	<10.0	<10.0	<10.0	<16.0
	4/28/22	1'	In-Situ	<0.050	<0.300	<10.0	<10.0	<10.0	<10.0	<10.0	<16.0

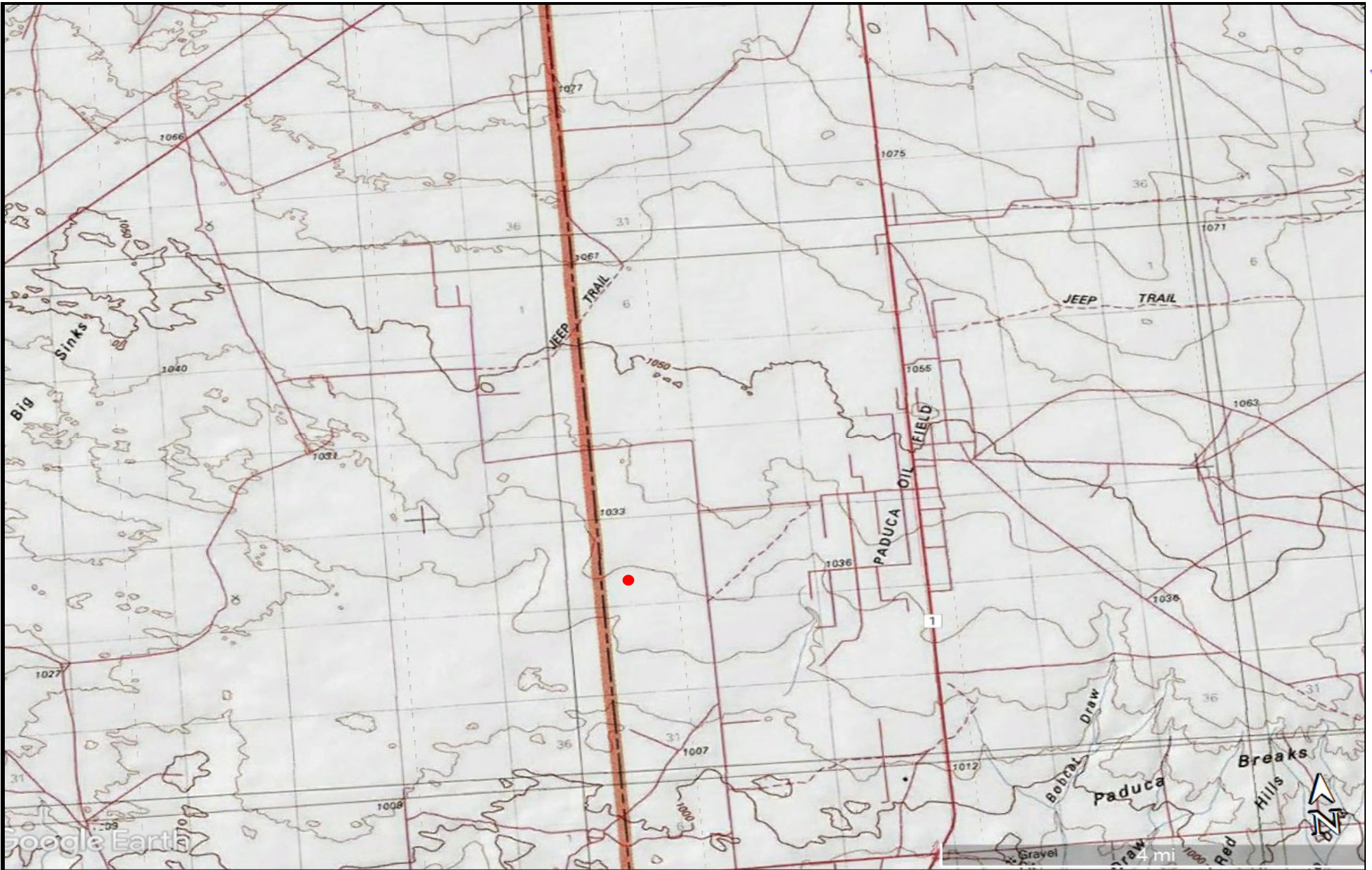
NOTES:

- = Sample not analyzed for that constituent.

Bold text denotes a concentration that exceeds the NMOCD Closure Criteria

Figure 1

Topographic Map




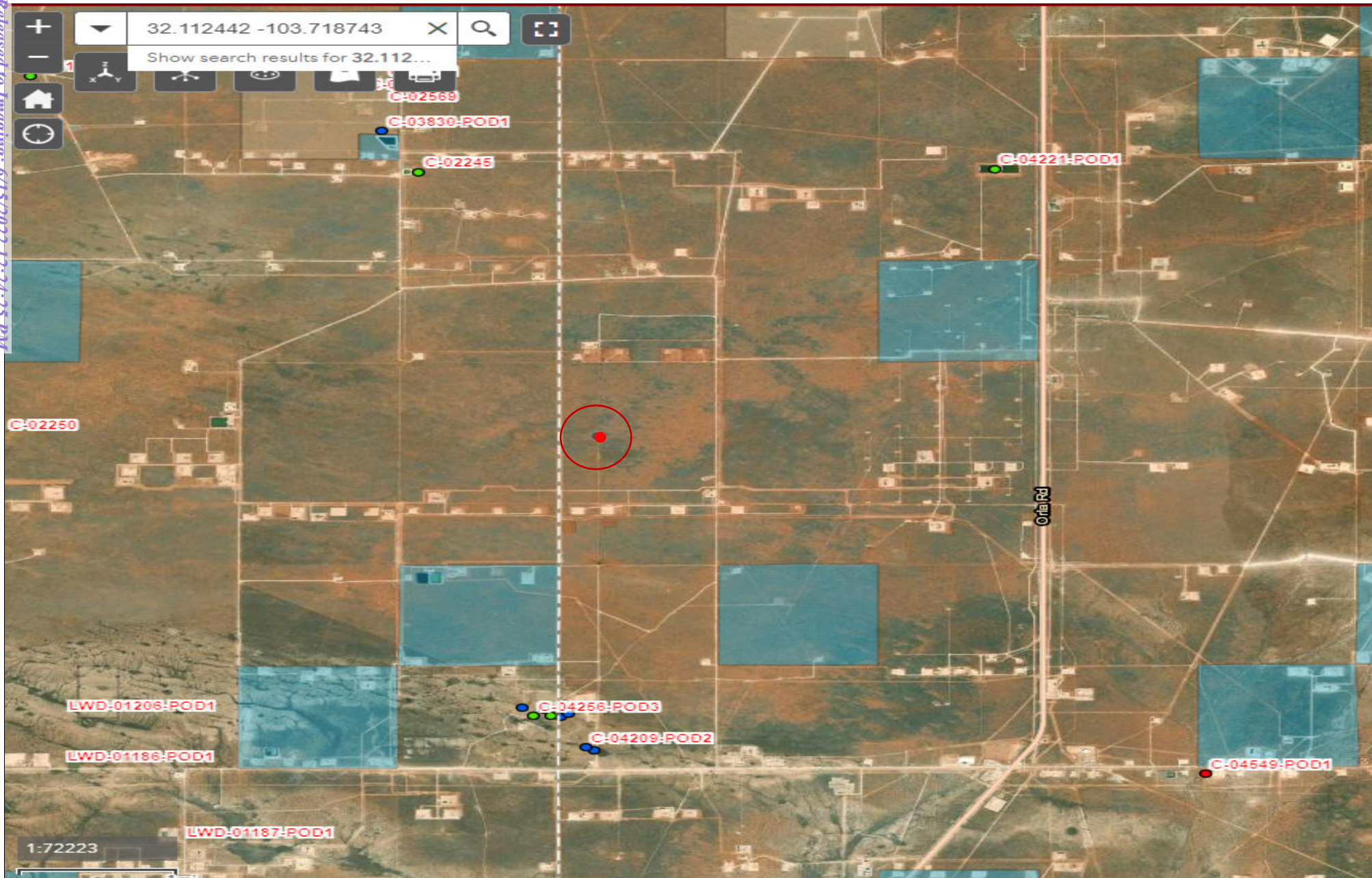
Legend	Topography Map	Figure 1
<p>● Cotton Draw Location</p>	<p>ETC, Texas Pipeline. Ltd. Cotton Draw GPS: 32.112443, -103.718743 Eddy County</p>	

Figure 2

OSE Map




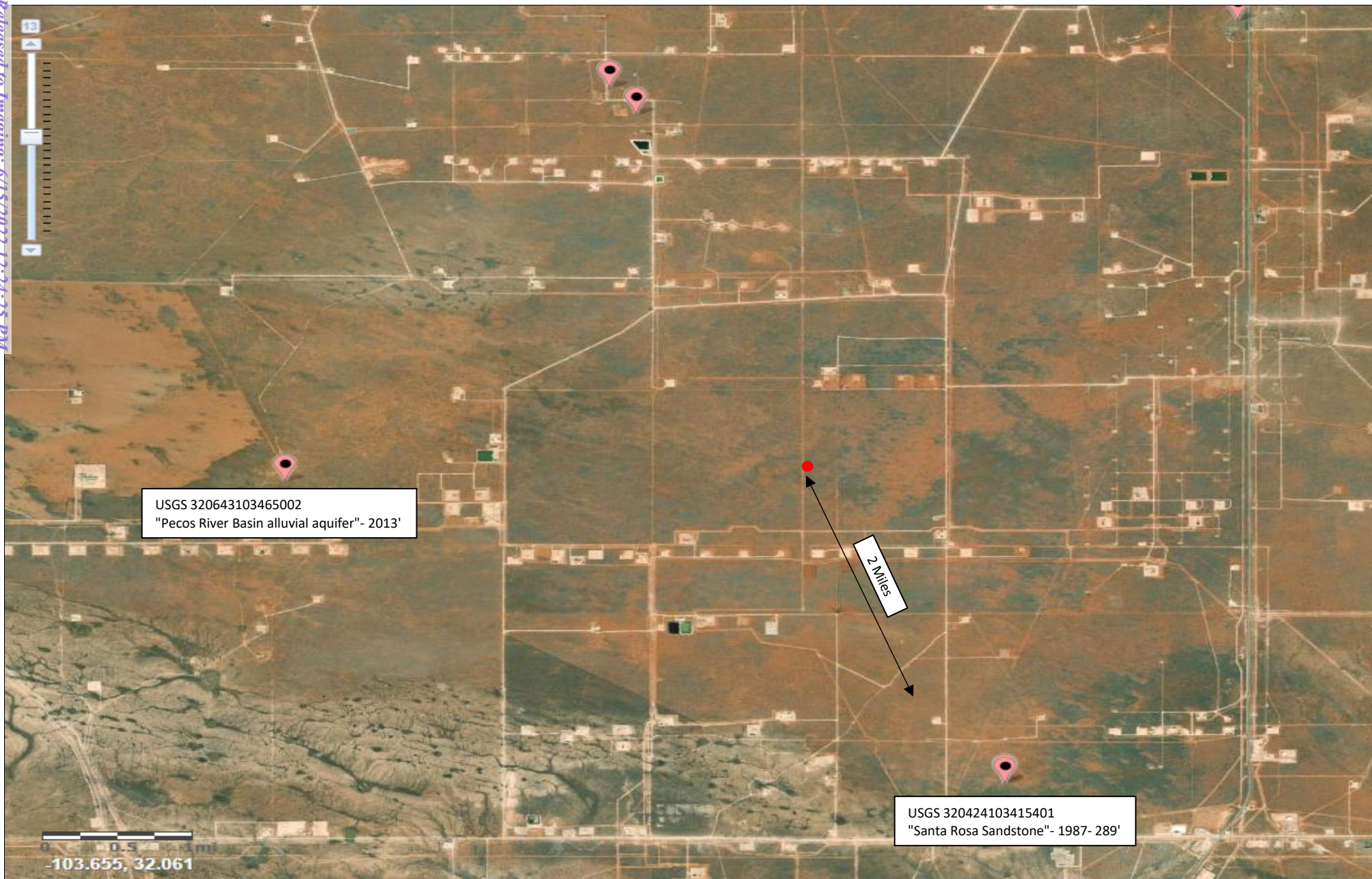
Legend:	OSE POD Locations Map	Figure 2
<ul style="list-style-type: none">● Cotton Draw Pipeline Location● Active OSE Water Well○ 1/2 Mile radius	<p>ETC Texas Pipeline, Ltd. Cotton Draw Pipeline GPS 32.112442 -103.718743 Eddy County</p>	

Figure 3
USGS Map




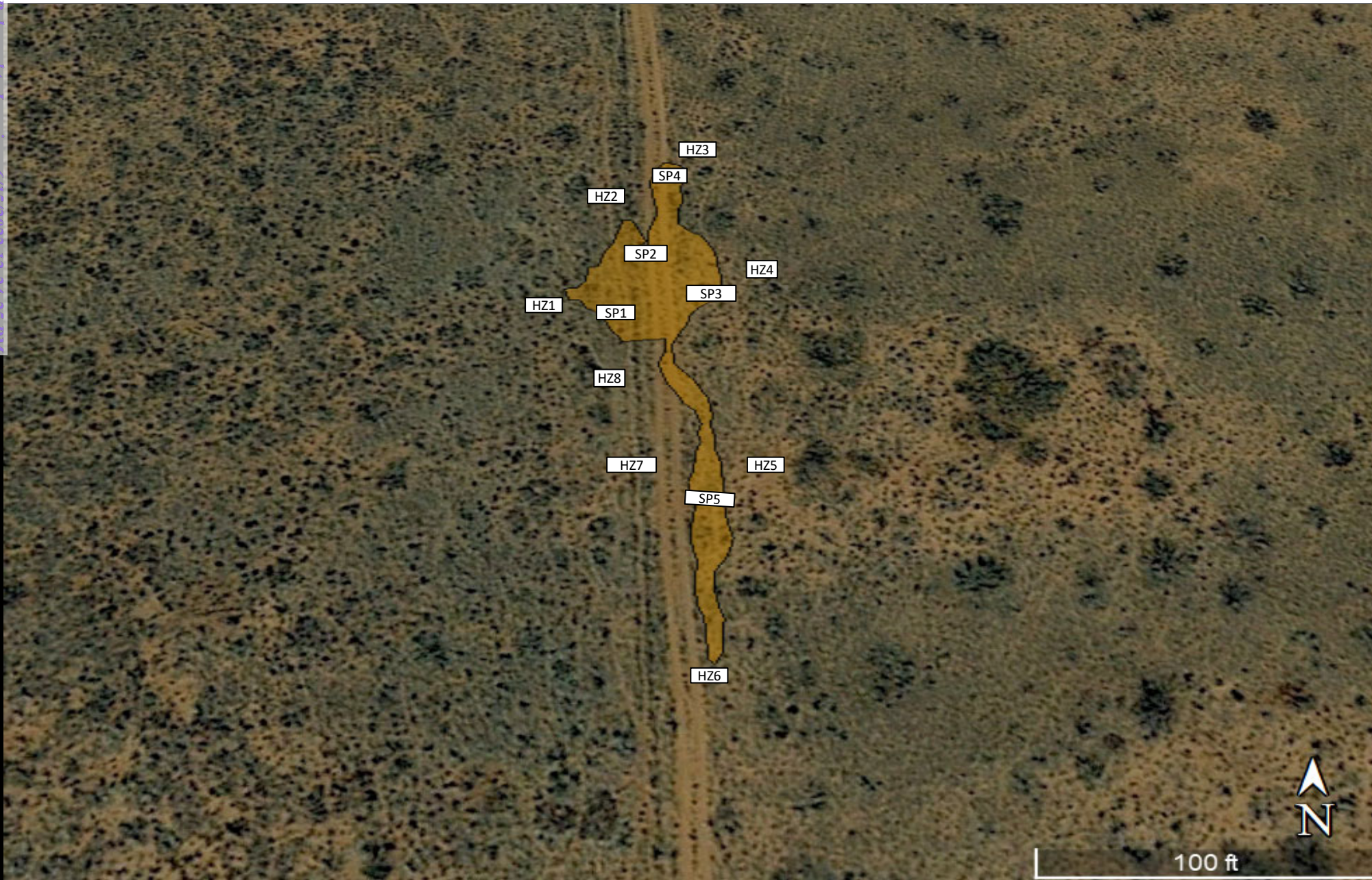
Legend:	USGS Well Locations Map	Figure 3
<p>● Cotton Draw Pipeline Location</p>	<p>ETC Texas Pipeline, Ltd. Cotton Draw Pipeline GPS 32.112443 -103.718743 Eddy County</p>	

Figure 4
Delineation Sample Location Map



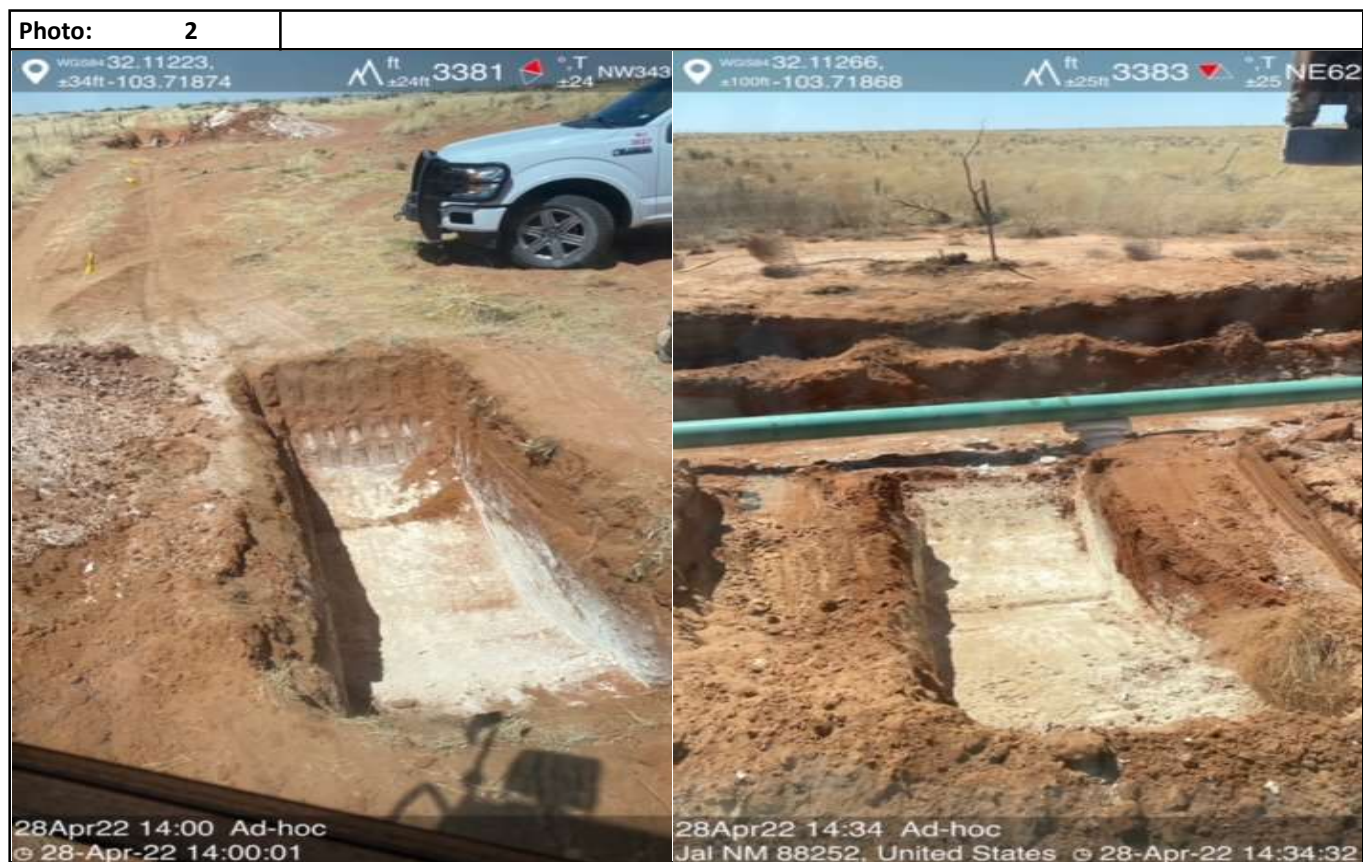
Legend:	Delineation Sample Map	Figure 4
<div data-bbox="73 1412 126 1437" data-label="Image"></div> Release Area <div data-bbox="73 1453 126 1477" data-label="Image"></div> Delineation Sample Location	ETC Texas Pipeline, Ltd. Cotton Draw Pipeline GPS: 32.112443 -103.718743 Eddy County New Mexico	<div data-bbox="1774 1388 1921 1542" data-label="Image"></div>

Attachment I Site Photographs

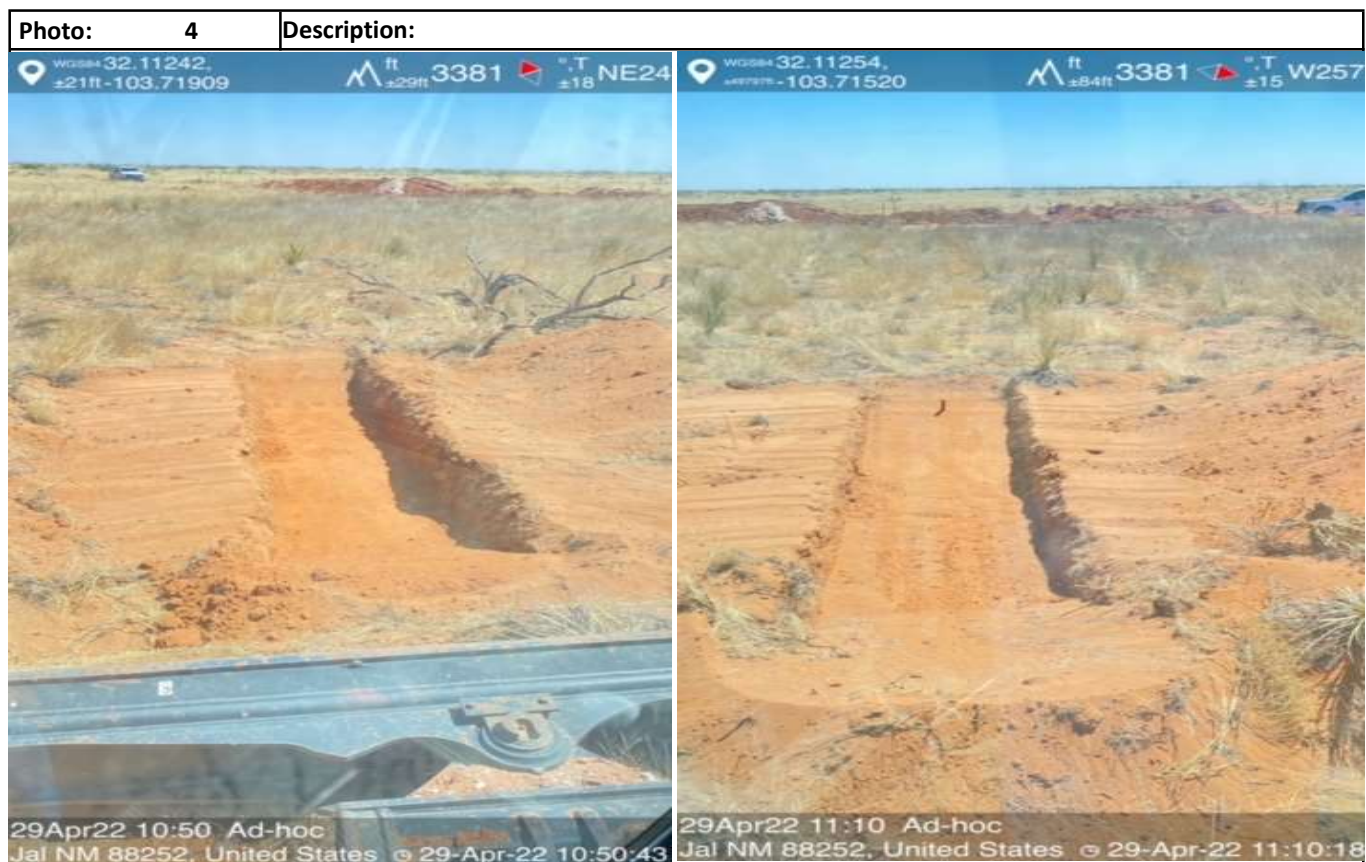


Haz Mat Special Services

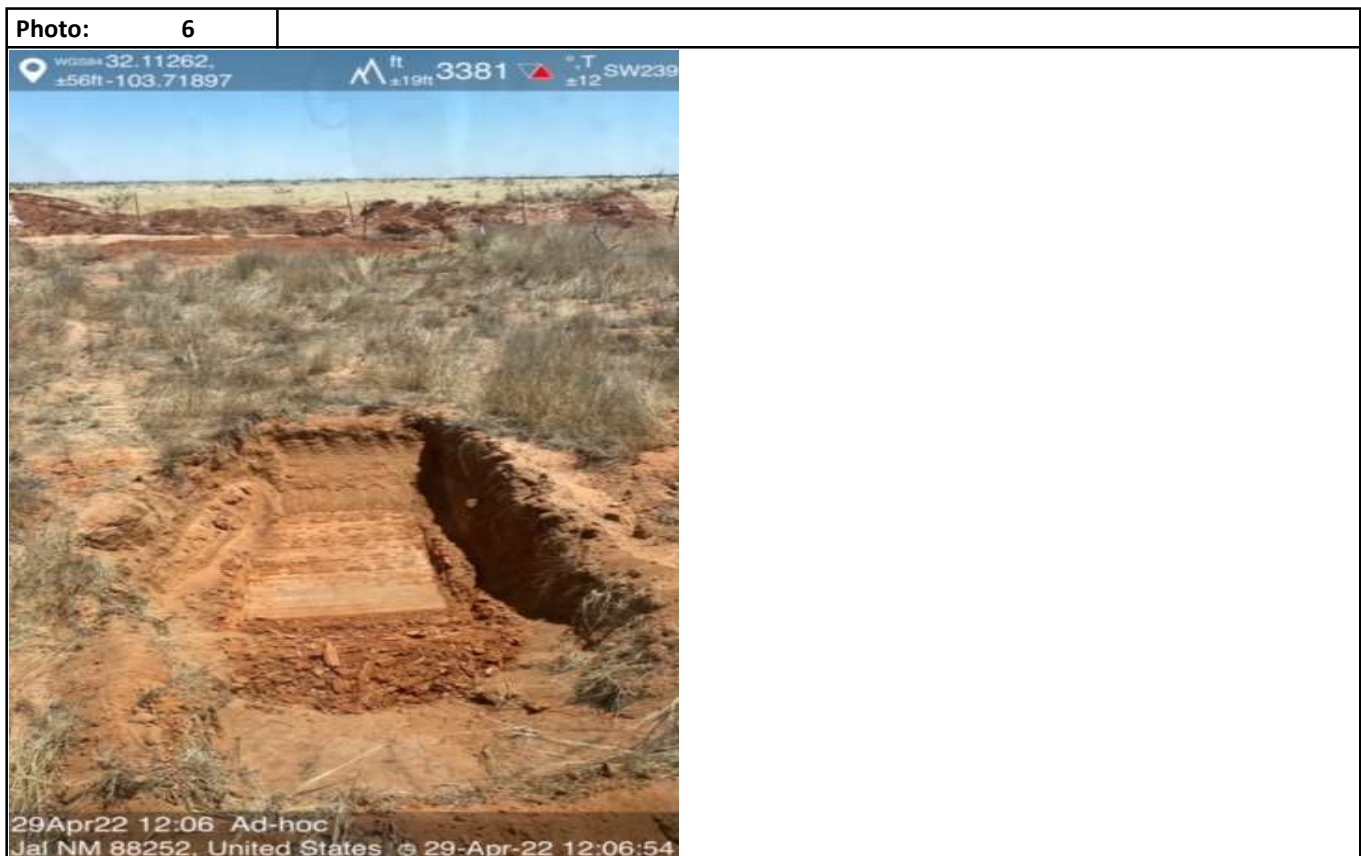
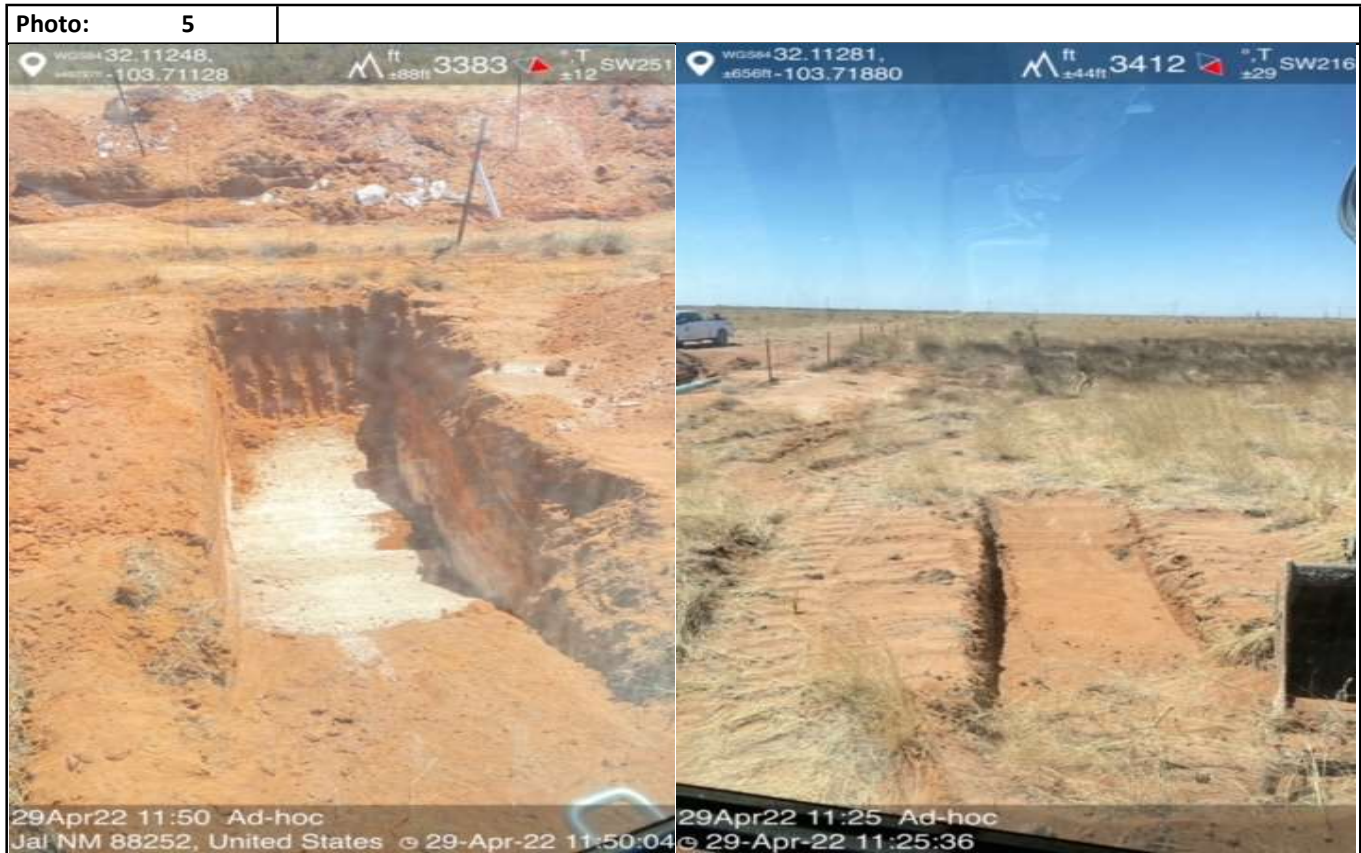
Photographs



Photographs



Photographs



Attachment II Depth to Groundwater



Haz Mat Special Services



New Mexico Office of the State Engineer


Water Right Summary



[get image list](#)


WR File Number: C 02245 **Subbasin:** C **Cross Reference:** -
Primary Purpose: STK 72-12-1 LIVESTOCK WATERING
Primary Status: PMT PERMIT
Total Acres: **Subfile:** - **Header:** -
Total Diversion: 3 **Cause/Case:** -
Agent: TWIN WELLS RANCH LLC
Contact: STEVEN MCCUTCHEON

Documents on File

Trn #	Doc	File/Act	Status		Transaction Desc.	From/ To	Acres	Diversion	Consumptive
			1	2					
722418	COWNF	2022-03-28	CHG	PRC	C 02245	T		0	
	469232	72121 1992-01-28	PMT	APR	C 02245	T		3	

Current Points of Diversion

(NAD83 UTM in meters)

POD Number	Well Tag	Source	Q	64Q16Q4Sec	Tws	Rng	X	Y	Other Location Desc
C 02245			1	1	12	25S 31E	619018	3557785*	

An () after northing value indicates UTM location was derived from PLSS - see Help

The data is furnished by the NMOSE/ISC and is accepted by the recipient with the expressed understanding that the OSE/ISC make no warranties, expressed or implied, concerning the accuracy, completeness, reliability, usability, or suitability for any particular purpose of the data.

4/25/22 9:16 AM

WATER RIGHT SUMMARY



New Mexico Office of the State Engineer

Point of Diversion Summary

Well Tag	POD Number	(quarters are 1=NW 2=NE 3=SW 4=SE) (quarters are smallest to largest)				(NAD83 UTM in meters)			
		Q64	Q16	Q4	Sec	Tw	Rng	X	Y
	C 02245	1	1	12	25S	31E		619018	3557785*

Driller License:

Driller Company:

Driller Name:

Drill Start Date:

Drill Finish Date:

Plug Date:

Log File Date:

PCW Rev Date:

Source:

Pump Type:

Pipe Discharge Size:

Estimated Yield:

Casing Size:

Depth Well:

Depth Water:

*UTM location was derived from PLSS - see Help

The data is furnished by the NMOSE/ISC and is accepted by the recipient with the expressed understanding that the OSE/ISC make no warranties, expressed or implied, concerning the accuracy, completeness, reliability, usability, or suitability for any particular purpose of the data.


4/25/22 9:17 AM

POINT OF DIVERSION SUMMARY



New Mexico Office of the State Engineer

Point of Diversion Summary

		(quarters are 1=NW 2=NE 3=SW 4=SE) (quarters are smallest to largest)						(NAD83 UTM in meters)	
Well Tag	POD Number	Q64	Q16	Q4	Sec	Tw	Rng	X	Y
NA	C 04209 POD1	2	3	3	06	26S	32E	620903	3548619 
Driller License:		1706		Driller Company:		ELITE DRILLERS CORPORATION			
Driller Name:		BRYCE WALLACE							
Drill Start Date:		04/28/2018		Drill Finish Date:		05/01/2018		Plug Date:	
Log File Date:		05/21/2018		PCW Rcv Date:				Source: Shallow	
Pump Type:				Pipe Discharge Size:				Estimated Yield: 25 GPM	
Casing Size:		6.00		Depth Well:		360 feet		Depth Water: 155 feet	
Water Bearing Stratifications:					Top	Bottom	Description		
					15	350	Sandstone/Gravel/Conglomerate		
Casing Perforations:					Top	Bottom			
					200	360			

The data is furnished by the NMOSE/ISC and is accepted by the recipient with the expressed understanding that the OSE/ISC make no warranties, expressed or implied, concerning the accuracy, completeness, reliability, usability, or suitability for any particular purpose of the data.

4/25/22 9:18 AM

POINT OF DIVERSION SUMMARY



New Mexico Office of the State Engineer


Water Right Summary





[get image list](#)

WR File Number: C 04209 **Subbasin:** CUB **Cross Reference:** -
Primary Purpose: EXP EXPLORATION
Primary Status: PMT PERMIT
Total Acres: **Subfile:** - **Header:** -
Total Diversion: 0 **Cause/Case:** -
Owner: BAKER RANCH
Contact: DAVE ANDERSEN

Documents on File

Trn #	Doc	File/Act	Status		Transaction Desc.	From/ To	Acres	Diversion	Consumptive
			1	2					
 get images	621334	EXPL 2018-03-07	PMT	LOG	C 04209 POD1-2	T	0	0	

Current Points of Diversion

POD Number	Well Tag	Source	Q							X	Y	Other Location Desc
			64	Q16	Q4	Sec	Tws	Rng				
C 04209 POD1	NA	Shallow	2	3	3	06	26S	32E	620903	3548619		
C 04209 POD2	NA	Shallow	2	3	3	06	26S	32E	620818	3548657		

The data is furnished by the NMOSE/ISC and is accepted by the recipient with the expressed understanding that the OSE/ISC make no warranties, expressed or implied, concerning the accuracy, completeness, reliability, usability, or suitability for any particular purpose of the data.

4/25/22 9:17 AM

WATER RIGHT SUMMARY



New Mexico Office of the State Engineer

Water Right Summary



[get image list](#)

WR File Number: C 04221 **Subbasin:** CUB **Cross Reference:** -

Primary Purpose: MON MONITORING WELL

Primary Status: PMT PERMIT


Total Acres: **Subfile:** - **Header:** -

Total Diversion: 0 **Cause/Case:** -

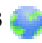
Owner: AND PRODUCTION CHEVRON NORTH AMERICA EXPLORAT

Contact: ARLIN KEITH BARGE

Documents on File

Trn #	Doc	File/Act	Status		Transaction Desc.	From/ To	Acres	Diversion	Consumptive
			1	2					
 get images	622659	EXPL	2018-04-03	PMT	APR	C 04221 POD1	T	0	0

Current Points of Diversion

POD Number	Well Tag	Source	Q					(NAD83 UTM in meters)		Other Location Desc	
			64	Q16	Q4	Sec	Tws	Rng	X		Y
C 04221 POD1	NA		2	1	2	09	25S	32E	624855	3557903	 COTTON DRAW FRAC POND B-1

The data is furnished by the NMOSE/ISC and is accepted by the recipient with the expressed understanding that the OSE/ISC make no warranties, expressed or implied, concerning the accuracy, completeness, reliability, usability, or suitability for any particular purpose of the data.

4/25/22 9:15 AM

WATER RIGHT SUMMARY



New Mexico Office of the State Engineer

Point of Diversion Summary

(quarters are 1=NW 2=NE 3=SW 4=SE)
(quarters are smallest to largest) (NAD83 UTM in meters)

Well Tag	POD Number	Q64	Q16	Q4	Sec	Tw	Rng	X	Y
NA	C 04221 POD1	2	1	2	09	25S	32E	624855	3557903

Driller License:

Driller Company:

Driller Name:

Drill Start Date:

Drill Finish Date:

Plug Date:

Log File Date:

PCW Rev Date:

Source:

Pump Type:

Pipe Discharge Size:

Estimated Yield:

Casing Size:

Depth Well:

Depth Water:

The data is furnished by the NMOSE/ISC and is accepted by the recipient with the expressed understanding that the OSE/ISC make no warranties, expressed or implied, concerning the accuracy, completeness, reliability, usability, or suitability for any particular purpose of the data.


4/25/22 9:15 AM

POINT OF DIVERSION SUMMARY



New Mexico Office of the State Engineer

Point of Diversion Summary

		(quarters are 1=NW 2=NE 3=SW 4=SE)							
		(quarters are smallest to largest)				(NAD83 UTM in meters)			
Well Tag	POD Number	Q64	Q16	Q4	Sec	Tws	Rng	X	Y
NA	C 04256 POD1	4	4	2	01	26S	31E	620384	3549257 

Driller License: 1706 **Driller Company:** ELITE DRILLERS CORPORATION

Driller Name: BRYCE WALLACE

Drill Start Date: 06/28/2018 **Drill Finish Date:** 07/04/2018 **Plug Date:**

Log File Date: 07/18/2018 **PCW Rev Date:** **Source:** Artesian

Pump Type: **Pipe Discharge Size:** **Estimated Yield:** 40 GPM

Casing Size: 5.80 **Depth Well:** 666 feet **Depth Water:** 340 feet

Water Bearing Stratifications:	Top	Bottom	Description
	330	390	Sandstone/Gravel/Conglomerate
	390	430	Sandstone/Gravel/Conglomerate
	430	480	Sandstone/Gravel/Conglomerate
	480	610	Sandstone/Gravel/Conglomerate

Casing Perforations:	Top	Bottom
	326	666

The data is furnished by the NMOSE/ISC and is accepted by the recipient with the expressed understanding that the OSE/ISC make no warranties, expressed or implied, concerning the accuracy, completeness, reliability, usability, or suitability for any particular purpose of the data.

4/25/22 9:15 AM

POINT OF DIVERSION SUMMARY



New Mexico Office of the State Engineer

Water Right Summary



[get image list](#)

WR File Number: C 04256 **Subbasin:** CUB **Cross Reference:** -
Primary Purpose: EXP EXPLORATION
Primary Status: PMT PERMIT
Total Acres: **Subfile:** - **Header:** -
Total Diversion: 0 **Cause/Case:** -
Owner: BAKER RANCH
Contact: BRYCE WALLACE

Documents on File

Trn #	Doc	File/Act	Status		Transaction Desc.	From/ To	Acres	Diversion	Consumptive
			1	2					
get images	634348	EXPL 2018-11-05	PMT	APR	C 04256 PODS2-3	T	0	0	
get images	626507	EXPL 2018-06-15	PMT	LOG	C 04256 POD1	T	0	0	

Current Points of Diversion

POD Number	Well Tag	Source	Q						X	Y	Other Location Desc
			64	Q16	Q4	Sec	Tws	Rng			
C 04256 POD1	NA	Artesian	4	4	2	01	26S	31E	620384	3549257	
C 04256 POD2	NA		4	4	2	01	26S	31E	620459	3549160	BAKER RANCH
C 04256 POD3	NA		3	4	2	01	26S	31E	620279	3549157	BAKER RANCH

The data is furnished by the NMOSE/ISC and is accepted by the recipient with the expressed understanding that the OSE/ISC make no warranties, expressed or implied, concerning the accuracy, completeness, reliability, usability, or suitability for any particular purpose of the data.

4/25/22 9:14 AM

WATER RIGHT SUMMARY



[USGS Home](#)
[Contact USGS](#)
[Search USGS](#)

National Water Information System: Web Interface

USGS Water Resources

Data Category:

Site Information ▼

Geographic Area:

United States ▼

GO

Click to hide News Bulletins

- Explore the *NEW* [USGS National Water Dashboard](#) interactive map to access real-time water data from over 13,500 stations nationwide.
- [Full News](#) 

USGS 320424103415401 26S.31E.01.421322

Available data for this site

SUMMARY OF ALL AVAILABLE DATA ▼

GO

Well Site

DESCRIPTION:

Latitude 32°04'24", Longitude 103°41'54" NAD27
Eddy County, New Mexico , Hydrologic Unit 13070001
Well depth: not determined.
Land surface altitude: 3,294 feet above NAVD88.
Well completed in "Other aquifers" (N9999OTHER) national aquifer.
Well completed in "Santa Rosa Sandstone" (231SNRS) local aquifer

AVAILABLE DATA:

Data Type	Begin Date	End Date	Count
Field groundwater-level measurements	1983-01-26	1987-10-21	3
Revisions	Unavailable (site:0) (timeseries:0)		

OPERATION:

Record for this site is maintained by the USGS New Mexico Water Science Center
Email questions about this site to [New Mexico Water Science Center Water-Data Inquiries](#)

[Questions about sites/data?](#)

[Feedback on this web site](#)

[Automated retrievals](#)

[Help](#)

[Data Tips](#)

[Explanation of terms](#)

[Subscribe for system changes](#)

[News](#)

[Accessibility](#) [FOIA](#) [Privacy](#) [Policies and Notices](#)

[U.S. Department of the Interior](#) | [U.S. Geological Survey](#)

Title: NWIS Site Information for USA: Site Inventory

URL: [https://waterdata.usgs.gov/nwis/inventory?](https://waterdata.usgs.gov/nwis/inventory?agency_code=USGS&site_no=320424103415401)

[agency_code=USGS&site_no=320424103415401](https://waterdata.usgs.gov/nwis/inventory?agency_code=USGS&site_no=320424103415401)



Page Contact Information: [New Mexico Water Data Support Team](#)

Page Last Modified: 2022-04-25 12:33:52 EDT

0.27 0.26 vaww01



[USGS Home](#)
[Contact USGS](#)
[Search USGS](#)

National Water Information System: Web Interface

USGS Water Resources

Data Category:


Site Information ▼

Geographic Area:

United States ▼

GO

Click to hide News Bulletins

- Explore the *NEW* [USGS National Water Dashboard](#) interactive map to access real-time water data from over 13,500 stations nationwide.
- [Full News](#) 

USGS 320932103443801 25S.31E.02.23441

Available data for this site

SUMMARY OF ALL AVAILABLE DATA ▼

GO

Well Site

DESCRIPTION:

Latitude 32°09'37.4", Longitude 103°44'29.6" NAD83
Eddy County, New Mexico , Hydrologic Unit 13070001
Well depth: 1016 feet
Land surface altitude: 3,460.00 feet above NGVD29.
Well completed in "Other aquifers" (N9999OTHER) national aquifer.
Well completed in "Rustler Formation" (312RSLR) local aquifer

AVAILABLE DATA:

Data Type	Begin Date	End Date	Count
Field groundwater-level measurements	1966-08-18	1976-01-28	2
Revisions	Unavailable (site:0) (timeseries:0)		

OPERATION:

Record for this site is maintained by the USGS New Mexico Water Science Center
Email questions about this site to [New Mexico Water Science Center Water-Data Inquiries](#)

[Questions about sites/data?](#)

[Feedback on this web site](#)

[Automated retrievals](#)

[Help](#)

[Data Tips](#)

[Explanation of terms](#)

[Subscribe for system changes](#)

[News](#)

[Accessibility](#) [FOIA](#) [Privacy](#) [Policies and Notices](#)

[U.S. Department of the Interior](#) | [U.S. Geological Survey](#)

Title: NWIS Site Information for USA: Site Inventory

URL: [https://waterdata.usgs.gov/nwis/inventory?](https://waterdata.usgs.gov/nwis/inventory?agency_code=USGS&site_no=320932103443801)

[agency_code=USGS&site_no=320932103443801](https://waterdata.usgs.gov/nwis/inventory?agency_code=USGS&site_no=320932103443801)



Page Contact Information: [New Mexico Water Data Support Team](#)

Page Last Modified: 2022-04-25 12:35:08 EDT

0.27 0.26 vaww01



USGS Home
Contact USGS
Search USGS

National Water Information System: Web Interface

USGS Water Resources

Data Category: Geographic Area:

Click to hideNews Bulletins

- Explore the *NEW* [USGS National Water Dashboard](#) interactive map to access real-time water data from over 13,500 stations nationwide.
- [Full News](#)

Groundwater levels for the Nation

Important: [Next Generation Monitoring Location Page](#)

Search Results -- 1 sites found

Agency code = usgs

site_no list =

- 320424103415401

Minimum number of levels = 1

[Save file of selected sites](#) to local disk for future upload

USGS 320424103415401 26S.31E.01.421322

Eddy County, New Mexico

Latitude 32°04'24", Longitude 103°41'54" NAD27

Land-surface elevation 3,294 feet above NAVD88

This well is completed in the Other aquifers (N9999OTHER) national aquifer.

This well is completed in the Santa Rosa Sandstone (231SNRS) local aquifer.

Output formats

Table of data
Tab-separated data
Graph of data
Reselect period

Date	Time	? Water-level date-time accuracy	? Parameter code	Water level, feet below land surface	Water level, feet above specific vertical datum	Referenced vertical datum	? Status	? Method of measurement	? Measuring agency	? Source measu
1983-01-26			D	62610	3002.25	NGVD29	1		Z	
1983-01-26			D	62611	3003.88	NAVD88	1		Z	
1983-01-26			D	72019	290.12		1		Z	
1983-02-14			D	62610	3002.95	NGVD29	1		Z	
1983-02-14			D	62611	3004.58	NAVD88	1		Z	
1983-02-14			D	72019	289.42		1		Z	
1987-10-21			D	62610	3002.47	NGVD29	1		Z	
1987-10-21			D	62611	3004.10	NAVD88	1		Z	
1987-10-21			D	72019	289.90		1		Z	

Explanation

Section	Code	Description
Water-level date-time accuracy	D	Date is accurate to the Day
Parameter code	62610	Groundwater level above NGVD 1929, feet
Parameter code	62611	Groundwater level above NAVD 1988, feet

Section	Code	Description
Parameter code	72019	Depth to water level, feet below land surface
Referenced vertical datum	NAVD88	North American Vertical Datum of 1988
Referenced vertical datum	NGVD29	National Geodetic Vertical Datum of 1929
Status	1	Static
Method of measurement	Z	Other.
Measuring agency		Not determined
Source of measurement		Not determined
Water-level approval status	A	Approved for publication -- Processing and review completed.

[Questions about sites/data?](#)

[Feedback on this web site](#)

[Automated retrievals](#)

[Help](#)

[Data Tips](#)

[Explanation of terms](#)

[Subscribe for system changes](#)

[News](#)

[Accessibility](#)

[FOIA](#)

[Privacy](#)

[Policies and Notices](#)

[U.S. Department of the Interior](#) | [U.S. Geological Survey](#)

Title: Groundwater for USA: Water Levels

URL: <https://nwis.waterdata.usgs.gov/nwis/gwlevels?>

Page Contact Information: [USGS Water Data Support Team](#)

Page Last Modified: 2022-04-25 12:34:08 EDT

0.29 0.25 nadww01





USGS Home
Contact USGS
Search USGS

National Water Information System: Web Interface

USGS Water Resources

Data Category: Geographic Area:

Click to hide News Bulletins

- Explore the *NEW* [USGS National Water Dashboard](#) interactive map to access real-time water data from over 13,500 stations nationwide.
- [Full News](#)

Groundwater levels for the Nation

Important: [Next Generation Monitoring Location Page](#)

Search Results -- 1 sites found

Agency code = usgs

site_no list =

- 320932103443801

Minimum number of levels = 1

[Save file of selected sites](#) to local disk for future upload

USGS 320932103443801 25S.31E.02.23441

Eddy County, New Mexico

Latitude 32°09'37.4", Longitude 103°44'29.6" NAD83

Land-surface elevation 3,460.00 feet above NGVD29

The depth of the well is 1,016 feet below land surface.

This well is completed in the Other aquifers (N9999OTHER) national aquifer.

This well is completed in the Rustler Formation (312RSLR) local aquifer.

Output formats

Table of data
Tab-separated data
Graph of data
Reselect period

Date	Time	? Water-level date-time accuracy	? Parameter code	Water level, feet below land surface	Water level, feet above specific vertical datum	Referenced vertical datum	? Status	? Method of measurement	? Measuring agency	? Source measu
1966-08-18			D	62610	3060.00	NGVD29	1	Z		
1966-08-18			D	62611	3061.71	NAVD88	1	Z		
1966-08-18			D	72019	400.00		1	Z		
1976-01-28			D	62610	3069.73	NGVD29	1	Z		
1976-01-28			D	62611	3071.44	NAVD88	1	Z		
1976-01-28			D	72019	390.27		1	Z		

Explanation

Section	Code	Description
Water-level date-time accuracy	D	Date is accurate to the Day
Parameter code	62610	Groundwater level above NGVD 1929, feet
Parameter code	62611	Groundwater level above NAVD 1988, feet
Parameter code	72019	Depth to water level, feet below land surface
Referenced vertical datum	NAVD88	North American Vertical Datum of 1988
Referenced vertical datum	NGVD29	National Geodetic Vertical Datum of 1929

Section	Code	Description
Status	1	Static
Method of measurement	Z	Other.
Measuring agency		Not determined
Source of measurement		Not determined
Water-level approval status	A	Approved for publication -- Processing and review completed.

[Questions about sites/data?](#)
[Feedback on this web site](#)
[Automated retrievals](#)
[Help](#)
[Data Tips](#)
[Explanation of terms](#)
[Subscribe for system changes](#)
[News](#)

[Accessibility](#) [FOIA](#) [Privacy](#) [Policies and Notices](#)

[U.S. Department of the Interior](#) | [U.S. Geological Survey](#)

Title: Groundwater for USA: Water Levels

URL: <https://nwis.waterdata.usgs.gov/nwis/gwlevels?>

Page Contact Information: [USGS Water Data Support Team](#)

Page Last Modified: 2022-04-25 12:35:22 EDT

0.32 0.29 nadww02



Attachment III Field Data



Haz Mat Special Services



Soil Profile

Date: 4-21-22

Project: Cotton Draw Pipeline
Latitude: 32.112443 Longitude: -103.718743

Depth (ft. bgs)	Description
1 1'	Top Soil
2 2'	Top Soil
3 3'	Top Soil
4 4'	Calichi
5 5'	Calichi
6	
7	
8	
9	
10	
11	
12	
13	
14	
15	
16	
17	
18	
19	
20	
21	
22	
23	
24	
25	
26	
27	
28	
29	
30	
31	
32	
33	
34	
35	
36	
37	
38	
39	
40	

HMSS



Sample Log

Date: 4-22-22Project: Cotton DrawLatitude: 0Longitude: 0Sampler: Kyle Guss

Sample ID	Depth	PID/Odor	Chloride	GPS
SW 6	Surface	.5	265 X4 = 1,060	12:00 pm 32.11215 -103.71870
SW 6	1'	.2	331 X4 = 1,324	12:00 pm 32.11215 -103.71870
SW 6	2'	0	410 X4 = 1,640	12:15 pm ↓ ↓
SW 6	3'	0	331 X4 = 1,324	12:15 pm ↓ ↓
SW 6	4'	0	356 X4 = 1,424	12:30 pm
SW 6	5'	0	356 X4 = 1,424	12:30 pm
SW 6	6'	0	382 X4 = 1,528	12:45 pm
Background	Surface	0	32 X4 = 128	1:00 pm 32.11226 -103.71852
SW 6	7'	0	472 X4 = 1,888	1:10 pm
SP5	Surface	5.4	382 X4 = 1,528	1:45 pm 32.11226 -103.71873
SP5	2'	.9	474 X4 = 1,896	1:45 pm ↓ ↓
SP5	4'	0	32 X4 = 128	2:00 pm
SP3	Surface	4.2	507 X4 = 2,028	2:15 pm 32.11277 -103.71886
SP3	5'	1,200	472 X4 = 1,888	2:30 pm ↓ ↓
SP3	6'	—	Refusal	
SP4	Surface	3	32 X4 = 128	2:45 32.11296 -103.71866
SP4	2'	1.9	32 X4 = 128	3:00 ↓ ↓
SW 3	Surface	1	32 X4 = 128	3:30 32.11305 -103.71868
SW 3	1'	1	32 X4 = 128	3:45 ↓ ↓
SW 7	Surface	.7	32 X4 = 128	10:30 32.11228 -103.71876
SW 7	1'	.2	32 X4 = 128	10:30
SW 8	Surface	.2	32 X4 = 128	10:45 32.11247 -103.71901
SW 8	1'	0	32 X4 = 128	10:45
SW 4	Surface	.3	32 X4 = 128	11:00 32.11257 -103.71907
SW 4	1'	0	32 X4 = 128	11:00
SW 2	Surface	.1	32 X4 = 128	11:15 32.11277 -103.71880
SW 2	1'	.1	32 X4 = 128	11:15
SP2	Surface	100.3	1056 X4 = 4,224	11:30 32.11266 -103.71826
SP2	2'	366	694 X4 = 2,776	11:45
SP2	4'	1788.4	426 X4 = 1,704	11:55
SP1	Surface	.1	29 X4 = 116	12:05 32.11262 -103.71842
SP1	2'	1	29 X4 = 116	12:05
SP 3W 26	8'	0	32 X4 = 128	

Sample Point = SP1 @ ## etc

Floor = FL1 etc

Sidewall = SW1 etc

Horizontal = HZ1 etc

Refusal = SP1 @ 4'-R

GPS Sample Points, Center of Comp Areas

Test Trench = TT1 @ ##

Resamples = SP1b @ 5' or SW #1b

Stockpile = Stockpile #1

Attachment IV Laboratory Analytical Reports



Haz Mat Special Services



PHONE (575) 393-2326 ° 101 E. MARLAND ° HOBBS, NM 88240

May 09, 2022

LINDSEY NEVELS

HAZMAT SPECIAL SERVICES

8610 S EUNICE HWY

HOBBS, NM 88240

RE: COTTON DRAW

Enclosed are the results of analyses for samples received by the laboratory on 05/03/22 12:30.

Cardinal Laboratories is accredited through Texas NELAP under certificate number T104704398-21-14. Accreditation applies to drinking water, non-potable water and solid and chemical materials. All accredited analytes are denoted by an asterisk (*). For a complete list of accredited analytes and matrices visit the TCEQ website at www.tceq.texas.gov/field/qa/lab_accred_certif.html.

Cardinal Laboratories is accredited through the State of Colorado Department of Public Health and Environment for:

Method EPA 552.2	Haloacetic Acids (HAA-5)
Method EPA 524.2	Total Trihalomethanes (TTHM)
Method EPA 524.4	Regulated VOCs (V1, V2, V3)

Accreditation applies to public drinking water matrices.

This report meets NELAP requirements and is made up of a cover page, analytical results, and a copy of the original chain-of-custody. If you have any questions concerning this report, please feel free to contact me.

Sincerely,

A handwritten signature in black ink that reads "Celey D. Keene". The signature is written in a cursive, flowing style.

Celey D. Keene

Lab Director/Quality Manager



PHONE (575) 393-2326 ° 101 E. MARLAND ° HOBBS, NM 88240

Analytical Results For:

HAZMAT SPECIAL SERVICES
LINDSEY NEVELS
8610 S EUNICE HWY
HOBBS NM, 88240
Fax To:

Received: 05/03/2022
Reported: 05/09/2022
Project Name: COTTON DRAW
Project Number: NOT GIVEN
Project Location: ETC

Sampling Date: 04/28/2022
Sampling Type: Soil
Sampling Condition: Cool & Intact
Sample Received By: Shalyn Rodriguez

Sample ID: SP1 - SURFACE (H221827-01)

BTEX 8021B		mg/kg		Analyzed By: MS\					
Analyte	Result	Reporting Limit	Analyzed	Method Blank	BS	% Recovery	True Value QC	RPD	Qualifier
Benzene*	<0.050	0.050	05/06/2022	ND	2.18	109	2.00	0.291	
Toluene*	<0.050	0.050	05/06/2022	ND	2.15	107	2.00	0.217	
Ethylbenzene*	<0.050	0.050	05/06/2022	ND	2.12	106	2.00	0.636	
Total Xylenes*	<0.150	0.150	05/06/2022	ND	6.59	110	6.00	1.08	
Total BTEX	<0.300	0.300	05/06/2022	ND					

Surrogate: 4-Bromofluorobenzene (PID) 102 % 69.9-140

Chloride, SM4500Cl-B		mg/kg		Analyzed By: AC						
Analyte	Result	Reporting Limit	Analyzed	Method Blank	BS	% Recovery	True Value QC	RPD	Qualifier	
Chloride	96.0	16.0	05/05/2022	ND	432	108	400	0.00		

TPH 8015M		mg/kg		Analyzed By: MS					
Analyte	Result	Reporting Limit	Analyzed	Method Blank	BS	% Recovery	True Value QC	RPD	Qualifier
GRO C6-C10*	<10.0	10.0	05/05/2022	ND	194	96.9	200	0.272	
DRO >C10-C28*	<10.0	10.0	05/05/2022	ND	190	95.0	200	0.758	
EXT DRO >C28-C36	<10.0	10.0	05/05/2022	ND					

Surrogate: 1-Chlorooctane 77.1 % 66.9-136

Surrogate: 1-Chlorooctadecane 78.6 % 59.5-142

Cardinal Laboratories

*=Accredited Analyte

PLEASE NOTE: Liability and Damages. Cardinal's liability and client's exclusive remedy for any claim arising, whether based in contract or tort, shall be limited to the amount paid by client for analyses. All claims, including those for negligence and any other cause whatsoever shall be deemed waived unless made in writing and received by Cardinal within thirty (30) days after completion of the applicable service. In no event shall Cardinal be liable for incidental or consequential damages, including, without limitation, business interruptions, loss of use, or loss of profits incurred by client, its subsidiaries, affiliates or successors arising out of or related to the performance of the services hereunder by Cardinal, regardless of whether such claim is based upon any of the above stated reasons or otherwise. Results relate only to the samples identified above. This report shall not be reproduced except in full with written approval of Cardinal Laboratories.

Celey D. Keene, Lab Director/Quality Manager



PHONE (575) 393-2326 ° 101 E. MARLAND ° HOBBS, NM 88240

Analytical Results For:

HAZMAT SPECIAL SERVICES
LINDSEY NEVELS
8610 S EUNICE HWY
HOBBS NM, 88240
Fax To:

Received: 05/03/2022
Reported: 05/09/2022
Project Name: COTTON DRAW
Project Number: NOT GIVEN
Project Location: ETC

Sampling Date: 04/28/2022
Sampling Type: Soil
Sampling Condition: Cool & Intact
Sample Received By: Shalyn Rodriguez

Sample ID: SP1 - 2' (H221827-02)

BTX 8021B		mg/kg		Analyzed By: MS\					
Analyte	Result	Reporting Limit	Analyzed	Method Blank	BS	% Recovery	True Value QC	RPD	Qualifier
Benzene*	<0.050	0.050	05/06/2022	ND	2.18	109	2.00	0.291	
Toluene*	<0.050	0.050	05/06/2022	ND	2.15	107	2.00	0.217	
Ethylbenzene*	<0.050	0.050	05/06/2022	ND	2.12	106	2.00	0.636	
Total Xylenes*	<0.150	0.150	05/06/2022	ND	6.59	110	6.00	1.08	
Total BTX	<0.300	0.300	05/06/2022	ND					

Surrogate: 4-Bromofluorobenzene (PID) 102 % 69.9-140

Chloride, SM4500CI-B		mg/kg		Analyzed By: AC						
Analyte	Result	Reporting Limit	Analyzed	Method Blank	BS	% Recovery	True Value QC	RPD	Qualifier	
Chloride	32.0	16.0	05/05/2022	ND	432	108	400	0.00		

TPH 8015M		mg/kg		Analyzed By: MS					
Analyte	Result	Reporting Limit	Analyzed	Method Blank	BS	% Recovery	True Value QC	RPD	Qualifier
GRO C6-C10*	<10.0	10.0	05/05/2022	ND	194	96.9	200	0.272	
DRO >C10-C28*	<10.0	10.0	05/05/2022	ND	190	95.0	200	0.758	
EXT DRO >C28-C36	<10.0	10.0	05/05/2022	ND					

Surrogate: 1-Chlorooctane 86.6 % 66.9-136

Surrogate: 1-Chlorooctadecane 88.5 % 59.5-142

Cardinal Laboratories

*=Accredited Analyte

PLEASE NOTE: Liability and Damages. Cardinal's liability and client's exclusive remedy for any claim arising, whether based in contract or tort, shall be limited to the amount paid by client for analyses. All claims, including those for negligence and any other cause whatsoever shall be deemed waived unless made in writing and received by Cardinal within thirty (30) days after completion of the applicable service. In no event shall Cardinal be liable for incidental or consequential damages, including, without limitation, business interruptions, loss of use, or loss of profits incurred by client, its subsidiaries, affiliates or successors arising out of or related to the performance of the services hereunder by Cardinal, regardless of whether such claim is based upon any of the above stated reasons or otherwise. Results relate only to the samples identified above. This report shall not be reproduced except in full with written approval of Cardinal Laboratories.

Celey D. Keene, Lab Director/Quality Manager



PHONE (575) 393-2326 ° 101 E. MARLAND ° HOBBS, NM 88240

Analytical Results For:

HAZMAT SPECIAL SERVICES
LINDSEY NEVELS
8610 S EUNICE HWY
HOBBS NM, 88240
Fax To:

Received: 05/03/2022
Reported: 05/09/2022
Project Name: COTTON DRAW
Project Number: NOT GIVEN
Project Location: ETC

Sampling Date: 04/28/2022
Sampling Type: Soil
Sampling Condition: Cool & Intact
Sample Received By: Shalyn Rodriguez

Sample ID: SP2 - SURFACE (H221827-03)

BTEX 8021B		mg/kg		Analyzed By: MS\					
Analyte	Result	Reporting Limit	Analyzed	Method Blank	BS	% Recovery	True Value QC	RPD	Qualifier
Benzene*	<0.050	0.050	05/06/2022	ND	2.18	109	2.00	0.291	
Toluene*	0.084	0.050	05/06/2022	ND	2.15	107	2.00	0.217	GC-NC1
Ethylbenzene*	<0.050	0.050	05/06/2022	ND	2.12	106	2.00	0.636	
Total Xylenes*	3.89	0.150	05/06/2022	ND	6.59	110	6.00	1.08	
Total BTEX	3.97	0.300	05/06/2022	ND					

Surrogate: 4-Bromofluorobenzene (PID) 118 % 69.9-140

Chloride, SM4500Cl-B		mg/kg		Analyzed By: AC						
Analyte	Result	Reporting Limit	Analyzed	Method Blank	BS	% Recovery	True Value QC	RPD	Qualifier	
Chloride	38400	16.0	05/05/2022	ND	432	108	400	0.00		

TPH 8015M	mg/kg		Analyzed By: MS					S-06	
Analyte	Result	Reporting Limit	Analyzed	Method Blank	BS	% Recovery	True Value QC	RPD	Qualifier
GRO C6-C10*	114	100	05/06/2022	ND	194	96.9	200	0.272	
DRO >C10-C28*	34300	100	05/06/2022	ND	190	95.0	200	0.758	
EXT DRO >C28-C36	1980	100	05/06/2022	ND					

Surrogate: 1-Chlorooctane 124 % 66.9-136

Surrogate: 1-Chlorooctadecane 1050 % 59.5-142

Cardinal Laboratories

*=Accredited Analyte

PLEASE NOTE: Liability and Damages. Cardinal's liability and client's exclusive remedy for any claim arising, whether based in contract or tort, shall be limited to the amount paid by client for analyses. All claims, including those for negligence and any other cause whatsoever shall be deemed waived unless made in writing and received by Cardinal within thirty (30) days after completion of the applicable service. In no event shall Cardinal be liable for incidental or consequential damages, including, without limitation, business interruptions, loss of use, or loss of profits incurred by client, its subsidiaries, affiliates or successors arising out of or related to the performance of the services hereunder by Cardinal, regardless of whether such claim is based upon any of the above stated reasons or otherwise. Results relate only to the samples identified above. This report shall not be reproduced except in full with written approval of Cardinal Laboratories.

Celey D. Keene, Lab Director/Quality Manager



PHONE (575) 393-2326 ° 101 E. MARLAND ° HOBBS, NM 88240

Analytical Results For:

HAZMAT SPECIAL SERVICES
LINDSEY NEVELS
8610 S EUNICE HWY
HOBBS NM, 88240
Fax To:

Received: 05/03/2022
Reported: 05/09/2022
Project Name: COTTON DRAW
Project Number: NOT GIVEN
Project Location: ETC

Sampling Date: 04/28/2022
Sampling Type: Soil
Sampling Condition: Cool & Intact
Sample Received By: Shalyn Rodriguez

Sample ID: SP2 - 4' (H221827-04)

BTX 8021B		mg/kg		Analyzed By: MS\						
Analyte	Result	Reporting Limit	Analyzed	Method Blank	BS	% Recovery	True Value QC	RPD	Qualifier	
Benzene*	<0.050	0.050	05/06/2022	ND	2.18	109	2.00	0.291		
Toluene*	<0.050	0.050	05/06/2022	ND	2.15	107	2.00	0.217		
Ethylbenzene*	<0.050	0.050	05/06/2022	ND	2.12	106	2.00	0.636		
Total Xylenes*	<0.150	0.150	05/06/2022	ND	6.59	110	6.00	1.08		
Total BTX	<0.300	0.300	05/06/2022	ND						

Surrogate: 4-Bromofluorobenzene (PID) 108 % 69.9-140

Chloride, SM4500CI-B		mg/kg		Analyzed By: AC						
Analyte	Result	Reporting Limit	Analyzed	Method Blank	BS	% Recovery	True Value QC	RPD	Qualifier	
Chloride	2800	16.0	05/05/2022	ND	432	108	400	0.00		

TPH 8015M		mg/kg		Analyzed By: MS					
Analyte	Result	Reporting Limit	Analyzed	Method Blank	BS	% Recovery	True Value QC	RPD	Qualifier
GRO C6-C10*	16.4	10.0	05/06/2022	ND	194	96.9	200	0.272	
DRO >C10-C28*	147	10.0	05/06/2022	ND	190	95.0	200	0.758	
EXT DRO >C28-C36	<10.0	10.0	05/06/2022	ND					

Surrogate: 1-Chlorooctane 91.8 % 66.9-136

Surrogate: 1-Chlorooctadecane 88.7 % 59.5-142

Cardinal Laboratories

*=Accredited Analyte

PLEASE NOTE: Liability and Damages. Cardinal's liability and client's exclusive remedy for any claim arising, whether based in contract or tort, shall be limited to the amount paid by client for analyses. All claims, including those for negligence and any other cause whatsoever shall be deemed waived unless made in writing and received by Cardinal within thirty (30) days after completion of the applicable service. In no event shall Cardinal be liable for incidental or consequential damages, including, without limitation, business interruptions, loss of use, or loss of profits incurred by client, its subsidiaries, affiliates or successors arising out of or related to the performance of the services hereunder by Cardinal, regardless of whether such claim is based upon any of the above stated reasons or otherwise. Results relate only to the samples identified above. This report shall not be reproduced except in full with written approval of Cardinal Laboratories.

Celey D. Keene, Lab Director/Quality Manager

101 East Marland, Hobbs, NM 88240
(575) 393-2326 FAX (575) 393-2476

(575) 393-2326 FAX (575) 393-2476

Arto Tervo

7 WBS #E-22012-G6-21300136

WILL TO

ANALYSIS REQUEST

Company Name: ERC Texas Pipeline
Project Manager: Luudsen, Bill

Address: _____

City: _____ State: _____ Zip: _____

Phone #: _____ Fax #: _____

Project #:
 Project Owner:

Project Name: Station 5

Project Location:

Sampler Name: Bobby Smith

FOR LAB USE ONLY

DMF

(C)

sample I.D.

5/2/2019

1000

607-91

[illegible]

509-4)

500 - 5000

6

SP4 - Surface

594-21

background

PLEASE NOTE: I believe and I am sure, I am not alone, that the world is a better place than it was when I was born. I believe and I am sure, I am not alone, that the world is a better place than it was when I was born.

analyses. All claims including those for negligence and any other cause whatsoever shall be deemed waived. In no event shall Cardinal be liable for bodily or personal injury or death.

...various or successors arising out of or related to the performance of services hereunder by Cardinal, n

5-3-4

July Aug	1230	8
----------	------	---

Rec Date:

Time:

Delivered By: (Circle One)	Observed Temp. °C
	3.8

Sampler - UPS - Bus - Other:	Corrected Temp. °C
2	2
2	2

FORM-006 R.S.2 10/01/21

+ Cardinal cannot

PHONE (575) 393-2326 • 101 E. MARLAND • HOBBS, NM 88240

Notes and Definitions

S-06	The recovery of this surrogate is outside control limits due to sample dilution required from high analyte concentration and/or matrix interference's.
S-04	The surrogate recovery for this sample is outside of established control limits due to a sample matrix effect.
GC-NC1	8260 confirmation analysis was performed; initial GC results were not supported by GC/MS analysis and are biased high with interfering compounds.
ND	Analyte NOT DETECTED at or above the reporting limit
RPD	Relative Percent Difference
**	Samples not received at proper temperature of 6°C or below.
***	Insufficient time to reach temperature.
-	Chloride by SM4500Cl-B does not require samples be received at or below 6°C Samples reported on an as received basis (wet) unless otherwise noted on report

Cardinal Laboratories

*=Accredited Analyte

PLEASE NOTE: Liability and Damages. Cardinal's liability and client's exclusive remedy for any claim arising, whether based in contract or tort, shall be limited to the amount paid by client for analyses. All claims, including those for negligence and any other cause whatsoever shall be deemed waived unless made in writing and received by Cardinal within thirty (30) days after completion of the applicable service. In no event shall Cardinal be liable for incidental or consequential damages, including, without limitation, business interruptions, loss of use, or loss of profits incurred by client, its subsidiaries, affiliates or successors arising out of or related to the performance of the services hereunder by Cardinal, regardless of whether such claim is based upon any of the above stated reasons or otherwise. Results relate only to the samples identified above. This report shall not be reproduced except in full with written approval of Cardinal Laboratories.

A handwritten signature in black ink, appearing to read "Celey D. Keene", is written over a horizontal line.

Celey D. Keene, Lab Director/Quality Manager



PHONE (575) 393-2326 ° 101 E. MARLAND ° HOBBS, NM 88240

Analytical Results For:

HAZMAT SPECIAL SERVICES
LINDSEY NEVELS
8610 S EUNICE HWY
HOBBS NM, 88240
Fax To:

Received: 05/03/2022
Reported: 05/09/2022
Project Name: COTTON DRAW
Project Number: NOT GIVEN
Project Location: ETC

Sampling Date: 04/28/2022
Sampling Type: Soil
Sampling Condition: Cool & Intact
Sample Received By: Shalyn Rodriguez

Sample ID: HZ8 - 1' (H221827-21)

BTEx 8021B		mg/kg		Analyzed By: MS\					
Analyte	Result	Reporting Limit	Analyzed	Method Blank	BS	% Recovery	True Value QC	RPD	Qualifier
Benzene*	<0.050	0.050	05/06/2022	ND	2.13	106	2.00	2.90	
Toluene*	<0.050	0.050	05/06/2022	ND	2.08	104	2.00	3.51	
Ethylbenzene*	<0.050	0.050	05/06/2022	ND	2.03	102	2.00	3.03	
Total Xylenes*	<0.150	0.150	05/06/2022	ND	6.32	105	6.00	3.00	
Total BTEx	<0.300	0.300	05/06/2022	ND					

Surrogate: 4-Bromofluorobenzene (PID) 103 % 69.9-140

Chloride, SM4500CI-B		mg/kg		Analyzed By: AC						
Analyte	Result	Reporting Limit	Analyzed	Method Blank	BS	% Recovery	True Value QC	RPD	Qualifier	
Chloride	<16.0	16.0	05/05/2022	ND	432	108	400	0.00		

TPH 8015M		mg/kg		Analyzed By: MS					
Analyte	Result	Reporting Limit	Analyzed	Method Blank	BS	% Recovery	True Value QC	RPD	Qualifier
GRO C6-C10*	<10.0	10.0	05/05/2022	ND	205	103	200	7.55	
DRO >C10-C28*	<10.0	10.0	05/05/2022	ND	197	98.4	200	7.96	
EXT DRO >C28-C36	<10.0	10.0	05/05/2022	ND					

Surrogate: 1-Chlorooctane 88.3 % 66.9-136

Surrogate: 1-Chlorooctadecane 91.2 % 59.5-142

Cardinal Laboratories

*=Accredited Analyte

PLEASE NOTE: Liability and Damages. Cardinal's liability and client's exclusive remedy for any claim arising, whether based in contract or tort, shall be limited to the amount paid by client for analyses. All claims, including those for negligence and any other cause whatsoever shall be deemed waived unless made in writing and received by Cardinal within thirty (30) days after completion of the applicable service. In no event shall Cardinal be liable for incidental or consequential damages, including, without limitation, business interruptions, loss of use, or loss of profits incurred by client, its subsidiaries, affiliates or successors arising out of or related to the performance of the services hereunder by Cardinal, regardless of whether such claim is based upon any of the above stated reasons or otherwise. Results relate only to the samples identified above. This report shall not be reproduced except in full with written approval of Cardinal Laboratories.

Celey D. Keene, Lab Director/Quality Manager



PHONE (575) 393-2326 ° 101 E. MARLAND ° HOBBS, NM 88240

Analytical Results For:

HAZMAT SPECIAL SERVICES
LINDSEY NEVELS
8610 S EUNICE HWY
HOBBS NM, 88240
Fax To:

Received: 05/03/2022
Reported: 05/09/2022
Project Name: COTTON DRAW
Project Number: NOT GIVEN
Project Location: ETC

Sampling Date: 04/28/2022
Sampling Type: Soil
Sampling Condition: Cool & Intact
Sample Received By: Shalyn Rodriguez

Sample ID: HZ8 - SURFACE (H221827-20)

BTEx 8021B		mg/kg		Analyzed By: MS\						
Analyte	Result	Reporting Limit	Analyzed	Method Blank	BS	% Recovery	True Value QC	RPD	Qualifier	
Benzene*	<0.050	0.050	05/06/2022	ND	2.13	106	2.00	2.90		
Toluene*	<0.050	0.050	05/06/2022	ND	2.08	104	2.00	3.51		
Ethylbenzene*	<0.050	0.050	05/06/2022	ND	2.03	102	2.00	3.03		
Total Xylenes*	<0.150	0.150	05/06/2022	ND	6.32	105	6.00	3.00		
Total BTEx	<0.300	0.300	05/06/2022	ND						

Surrogate: 4-Bromofluorobenzene (PID) 102 % 69.9-140

Chloride, SM4500CI-B		mg/kg		Analyzed By: AC						
Analyte	Result	Reporting Limit	Analyzed	Method Blank	BS	% Recovery	True Value QC	RPD	Qualifier	
Chloride	<16.0	16.0	05/05/2022	ND	432	108	400	0.00		

TPH 8015M		mg/kg		Analyzed By: MS					
Analyte	Result	Reporting Limit	Analyzed	Method Blank	BS	% Recovery	True Value QC	RPD	Qualifier
GRO C6-C10*	<10.0	10.0	05/05/2022	ND	205	103	200	7.55	
DRO >C10-C28*	<10.0	10.0	05/05/2022	ND	197	98.4	200	7.96	
EXT DRO >C28-C36	<10.0	10.0	05/05/2022	ND					

Surrogate: 1-Chlorooctane 97.6 % 66.9-136

Surrogate: 1-Chlorooctadecane 102 % 59.5-142

Cardinal Laboratories

*=Accredited Analyte

PLEASE NOTE: Liability and Damages. Cardinal's liability and client's exclusive remedy for any claim arising, whether based in contract or tort, shall be limited to the amount paid by client for analyses. All claims, including those for negligence and any other cause whatsoever shall be deemed waived unless made in writing and received by Cardinal within thirty (30) days after completion of the applicable service. In no event shall Cardinal be liable for incidental or consequential damages, including, without limitation, business interruptions, loss of use, or loss of profits incurred by client, its subsidiaries, affiliates or successors arising out of or related to the performance of the services hereunder by Cardinal, regardless of whether such claim is based upon any of the above stated reasons or otherwise. Results relate only to the samples identified above. This report shall not be reproduced except in full with written approval of Cardinal Laboratories.

Celey D. Keene, Lab Director/Quality Manager



PHONE (575) 393-2326 ° 101 E. MARLAND ° HOBBS, NM 88240

Analytical Results For:

HAZMAT SPECIAL SERVICES
LINDSEY NEVELS
8610 S EUNICE HWY
HOBBS NM, 88240
Fax To:

Received: 05/03/2022
Reported: 05/09/2022
Project Name: COTTON DRAW
Project Number: NOT GIVEN
Project Location: ETC

Sampling Date: 04/28/2022
Sampling Type: Soil
Sampling Condition: Cool & Intact
Sample Received By: Shalyn Rodriguez

Sample ID: HZ7 - 1' (H221827-19)

BTX 8021B		mg/kg		Analyzed By: MS\					
Analyte	Result	Reporting Limit	Analyzed	Method Blank	BS	% Recovery	True Value QC	RPD	Qualifier
Benzene*	<0.050	0.050	05/06/2022	ND	2.13	106	2.00	2.90	
Toluene*	<0.050	0.050	05/06/2022	ND	2.08	104	2.00	3.51	
Ethylbenzene*	<0.050	0.050	05/06/2022	ND	2.03	102	2.00	3.03	
Total Xylenes*	<0.150	0.150	05/06/2022	ND	6.32	105	6.00	3.00	
Total BTX	<0.300	0.300	05/06/2022	ND					

Surrogate: 4-Bromofluorobenzene (PID) 101 % 69.9-140

Chloride, SM4500CI-B		mg/kg		Analyzed By: AC						
Analyte	Result	Reporting Limit	Analyzed	Method Blank	BS	% Recovery	True Value QC	RPD	Qualifier	
Chloride	<16.0	16.0	05/05/2022	ND	432	108	400	0.00		

TPH 8015M		mg/kg		Analyzed By: MS					
Analyte	Result	Reporting Limit	Analyzed	Method Blank	BS	% Recovery	True Value QC	RPD	Qualifier
GRO C6-C10*	<10.0	10.0	05/05/2022	ND	205	103	200	7.55	
DRO >C10-C28*	<10.0	10.0	05/05/2022	ND	197	98.4	200	7.96	
EXT DRO >C28-C36	<10.0	10.0	05/05/2022	ND					

Surrogate: 1-Chlorooctane 90.5 % 66.9-136

Surrogate: 1-Chlorooctadecane 97.3 % 59.5-142

Cardinal Laboratories

*=Accredited Analyte

PLEASE NOTE: Liability and Damages. Cardinal's liability and client's exclusive remedy for any claim arising, whether based in contract or tort, shall be limited to the amount paid by client for analyses. All claims, including those for negligence and any other cause whatsoever shall be deemed waived unless made in writing and received by Cardinal within thirty (30) days after completion of the applicable service. In no event shall Cardinal be liable for incidental or consequential damages, including, without limitation, business interruptions, loss of use, or loss of profits incurred by client, its subsidiaries, affiliates or successors arising out of or related to the performance of the services hereunder by Cardinal, regardless of whether such claim is based upon any of the above stated reasons or otherwise. Results relate only to the samples identified above. This report shall not be reproduced except in full with written approval of Cardinal Laboratories.

Celey D. Keene, Lab Director/Quality Manager



PHONE (575) 393-2326 ° 101 E. MARLAND ° HOBBS, NM 88240

Analytical Results For:

HAZMAT SPECIAL SERVICES
LINDSEY NEVELS
8610 S EUNICE HWY
HOBBS NM, 88240
Fax To:

Received: 05/03/2022
Reported: 05/09/2022
Project Name: COTTON DRAW
Project Number: NOT GIVEN
Project Location: ETC

Sampling Date: 04/28/2022
Sampling Type: Soil
Sampling Condition: Cool & Intact
Sample Received By: Shalyn Rodriguez

Sample ID: HZ7 - SURFACE (H221827-18)

BTEx 8021B		mg/kg		Analyzed By: MS\						
Analyte	Result	Reporting Limit	Analyzed	Method Blank	BS	% Recovery	True Value QC	RPD	Qualifier	
Benzene*	<0.050	0.050	05/06/2022	ND	2.13	106	2.00	2.90		
Toluene*	<0.050	0.050	05/06/2022	ND	2.08	104	2.00	3.51		
Ethylbenzene*	<0.050	0.050	05/06/2022	ND	2.03	102	2.00	3.03		
Total Xylenes*	<0.150	0.150	05/06/2022	ND	6.32	105	6.00	3.00		
Total BTEx	<0.300	0.300	05/06/2022	ND						

Surrogate: 4-Bromofluorobenzene (PID) 100 % 69.9-140

Chloride, SM4500CI-B		mg/kg		Analyzed By: AC						
Analyte	Result	Reporting Limit	Analyzed	Method Blank	BS	% Recovery	True Value QC	RPD	Qualifier	
Chloride	32.0	16.0	05/05/2022	ND	432	108	400	0.00		

TPH 8015M		mg/kg		Analyzed By: MS					
Analyte	Result	Reporting Limit	Analyzed	Method Blank	BS	% Recovery	True Value QC	RPD	Qualifier
GRO C6-C10*	<10.0	10.0	05/05/2022	ND	205	103	200	7.55	
DRO >C10-C28*	<10.0	10.0	05/05/2022	ND	197	98.4	200	7.96	
EXT DRO >C28-C36	<10.0	10.0	05/05/2022	ND					

Surrogate: 1-Chlorooctane 106 % 66.9-136

Surrogate: 1-Chlorooctadecane 110 % 59.5-142

Cardinal Laboratories

*=Accredited Analyte

PLEASE NOTE: Liability and Damages. Cardinal's liability and client's exclusive remedy for any claim arising, whether based in contract or tort, shall be limited to the amount paid by client for analyses. All claims, including those for negligence and any other cause whatsoever shall be deemed waived unless made in writing and received by Cardinal within thirty (30) days after completion of the applicable service. In no event shall Cardinal be liable for incidental or consequential damages, including, without limitation, business interruptions, loss of use, or loss of profits incurred by client, its subsidiaries, affiliates or successors arising out of or related to the performance of the services hereunder by Cardinal, regardless of whether such claim is based upon any of the above stated reasons or otherwise. Results relate only to the samples identified above. This report shall not be reproduced except in full with written approval of Cardinal Laboratories.

Celey D. Keene, Lab Director/Quality Manager



PHONE (575) 393-2326 ° 101 E. MARLAND ° HOBBS, NM 88240

Analytical Results For:

HAZMAT SPECIAL SERVICES
LINDSEY NEVELS
8610 S EUNICE HWY
HOBBS NM, 88240
Fax To:

Received: 05/03/2022
Reported: 05/09/2022
Project Name: COTTON DRAW
Project Number: NOT GIVEN
Project Location: ETC

Sampling Date: 04/28/2022
Sampling Type: Soil
Sampling Condition: Cool & Intact
Sample Received By: Shalyn Rodriguez

Sample ID: HZ6 - 8' (H221827-17)

BTEx 8021B		mg/kg		Analyzed By: MS\					
Analyte	Result	Reporting Limit	Analyzed	Method Blank	BS	% Recovery	True Value QC	RPD	Qualifier
Benzene*	<0.050	0.050	05/06/2022	ND	2.13	106	2.00	2.90	
Toluene*	<0.050	0.050	05/06/2022	ND	2.08	104	2.00	3.51	
Ethylbenzene*	<0.050	0.050	05/06/2022	ND	2.03	102	2.00	3.03	
Total Xylenes*	<0.150	0.150	05/06/2022	ND	6.32	105	6.00	3.00	
Total BTEx	<0.300	0.300	05/06/2022	ND					

Surrogate: 4-Bromofluorobenzene (PID) 102 % 69.9-140

Chloride, SM4500CI-B		mg/kg		Analyzed By: AC						
Analyte	Result	Reporting Limit	Analyzed	Method Blank	BS	% Recovery	True Value QC	RPD	Qualifier	
Chloride	16.0	16.0	05/05/2022	ND	432	108	400	0.00		

TPH 8015M		mg/kg		Analyzed By: MS					
Analyte	Result	Reporting Limit	Analyzed	Method Blank	BS	% Recovery	True Value QC	RPD	Qualifier
GRO C6-C10*	<10.0	10.0	05/05/2022	ND	205	103	200	7.55	
DRO >C10-C28*	<10.0	10.0	05/05/2022	ND	197	98.4	200	7.96	
EXT DRO >C28-C36	<10.0	10.0	05/05/2022	ND					

Surrogate: 1-Chlorooctane 89.2 % 66.9-136

Surrogate: 1-Chlorooctadecane 94.1 % 59.5-142

Cardinal Laboratories

*=Accredited Analyte

PLEASE NOTE: Liability and Damages. Cardinal's liability and client's exclusive remedy for any claim arising, whether based in contract or tort, shall be limited to the amount paid by client for analyses. All claims, including those for negligence and any other cause whatsoever shall be deemed waived unless made in writing and received by Cardinal within thirty (30) days after completion of the applicable service. In no event shall Cardinal be liable for incidental or consequential damages, including, without limitation, business interruptions, loss of use, or loss of profits incurred by client, its subsidiaries, affiliates or successors arising out of or related to the performance of the services hereunder by Cardinal, regardless of whether such claim is based upon any of the above stated reasons or otherwise. Results relate only to the samples identified above. This report shall not be reproduced except in full with written approval of Cardinal Laboratories.

Celey D. Keene, Lab Director/Quality Manager



PHONE (575) 393-2326 • 101 E. MARLAND • HOBBS, NM 88240

Analytical Results For:

HAZMAT SPECIAL SERVICES
LINDSEY NEVELS
8610 S EUNICE HWY
HOBBS NM, 88240
Fax To:

Received: 05/03/2022
Reported: 05/09/2022
Project Name: COTTON DRAW
Project Number: NOT GIVEN
Project Location: ETC

Sampling Date: 04/28/2022
Sampling Type: Soil
Sampling Condition: Cool & Intact
Sample Received By: Shalyn Rodriguez

Sample ID: HZ6 - SURFACE (H221827-16)

BTEx 8021B		mg/kg		Analyzed By: MS\						
Analyte	Result	Reporting Limit	Analyzed	Method Blank	BS	% Recovery	True Value QC	RPD	Qualifier	
Benzene*	<0.050	0.050	05/06/2022	ND	2.13	106	2.00	2.90		
Toluene*	<0.050	0.050	05/06/2022	ND	2.08	104	2.00	3.51		
Ethylbenzene*	<0.050	0.050	05/06/2022	ND	2.03	102	2.00	3.03		
Total Xylenes*	<0.150	0.150	05/06/2022	ND	6.32	105	6.00	3.00		
Total BTEx	<0.300	0.300	05/06/2022	ND						

Surrogate: 4-Bromofluorobenzene (PID) 102 % 69.9-140

Chloride, SM4500CI-B		mg/kg		Analyzed By: AC						
Analyte	Result	Reporting Limit	Analyzed	Method Blank	BS	% Recovery	True Value QC	RPD	Qualifier	
Chloride	1420	16.0	05/05/2022	ND	432	108	400	0.00		

TPH 8015M		mg/kg		Analyzed By: MS					
Analyte	Result	Reporting Limit	Analyzed	Method Blank	BS	% Recovery	True Value QC	RPD	Qualifier
GRO C6-C10*	<10.0	10.0	05/05/2022	ND	205	103	200	7.55	
DRO >C10-C28*	16.4	10.0	05/05/2022	ND	197	98.4	200	7.96	
EXT DRO >C28-C36	<10.0	10.0	05/05/2022	ND					

Surrogate: 1-Chlorooctane 100 % 66.9-136

Surrogate: 1-Chlorooctadecane 107 % 59.5-142

Cardinal Laboratories

*=Accredited Analyte

PLEASE NOTE: Liability and Damages. Cardinal's liability and client's exclusive remedy for any claim arising, whether based in contract or tort, shall be limited to the amount paid by client for analyses. All claims, including those for negligence and any other cause whatsoever shall be deemed waived unless made in writing and received by Cardinal within thirty (30) days after completion of the applicable service. In no event shall Cardinal be liable for incidental or consequential damages, including, without limitation, business interruptions, loss of use, or loss of profits incurred by client, its subsidiaries, affiliates or successors arising out of or related to the performance of the services hereunder by Cardinal, regardless of whether such claim is based upon any of the above stated reasons or otherwise. Results relate only to the samples identified above. This report shall not be reproduced except in full with written approval of Cardinal Laboratories.

Celey D. Keene, Lab Director/Quality Manager



PHONE (575) 393-2326 ° 101 E. MARLAND ° HOBBS, NM 88240

Analytical Results For:

HAZMAT SPECIAL SERVICES
LINDSEY NEVELS
8610 S EUNICE HWY
HOBBS NM, 88240
Fax To:

Received: 05/03/2022
Reported: 05/09/2022
Project Name: COTTON DRAW
Project Number: NOT GIVEN
Project Location: ETC

Sampling Date: 04/28/2022
Sampling Type: Soil
Sampling Condition: Cool & Intact
Sample Received By: Shalyn Rodriguez

Sample ID: HZ3 - 1' (H221827-15)

BTEx 8021B		mg/kg		Analyzed By: MS\					
Analyte	Result	Reporting Limit	Analyzed	Method Blank	BS	% Recovery	True Value QC	RPD	Qualifier
Benzene*	<0.050	0.050	05/06/2022	ND	2.13	106	2.00	2.90	
Toluene*	<0.050	0.050	05/06/2022	ND	2.08	104	2.00	3.51	
Ethylbenzene*	<0.050	0.050	05/06/2022	ND	2.03	102	2.00	3.03	
Total Xylenes*	<0.150	0.150	05/06/2022	ND	6.32	105	6.00	3.00	
Total BTEx	<0.300	0.300	05/06/2022	ND					

Surrogate: 4-Bromofluorobenzene (PID) 103 % 69.9-140

Chloride, SM4500CI-B		mg/kg		Analyzed By: AC						
Analyte	Result	Reporting Limit	Analyzed	Method Blank	BS	% Recovery	True Value QC	RPD	Qualifier	
Chloride	16.0	16.0	05/05/2022	ND	432	108	400	0.00		

TPH 8015M		mg/kg		Analyzed By: MS					
Analyte	Result	Reporting Limit	Analyzed	Method Blank	BS	% Recovery	True Value QC	RPD	Qualifier
GRO C6-C10*	<10.0	10.0	05/05/2022	ND	194	96.9	200	0.272	
DRO >C10-C28*	<10.0	10.0	05/05/2022	ND	190	95.0	200	0.758	
EXT DRO >C28-C36	<10.0	10.0	05/05/2022	ND					

Surrogate: 1-Chlorooctane 83.0 % 66.9-136

Surrogate: 1-Chlorooctadecane 84.8 % 59.5-142

Cardinal Laboratories

*=Accredited Analyte

PLEASE NOTE: Liability and Damages. Cardinal's liability and client's exclusive remedy for any claim arising, whether based in contract or tort, shall be limited to the amount paid by client for analyses. All claims, including those for negligence and any other cause whatsoever shall be deemed waived unless made in writing and received by Cardinal within thirty (30) days after completion of the applicable service. In no event shall Cardinal be liable for incidental or consequential damages, including, without limitation, business interruptions, loss of use, or loss of profits incurred by client, its subsidiaries, affiliates or successors arising out of or related to the performance of the services hereunder by Cardinal, regardless of whether such claim is based upon any of the above stated reasons or otherwise. Results relate only to the samples identified above. This report shall not be reproduced except in full with written approval of Cardinal Laboratories.

Celey D. Keene, Lab Director/Quality Manager



PHONE (575) 393-2326 • 101 E. MARLAND • HOBBS, NM 88240

Analytical Results For:

HAZMAT SPECIAL SERVICES
LINDSEY NEVELS
8610 S EUNICE HWY
HOBBS NM, 88240
Fax To:

Received: 05/03/2022
Reported: 05/09/2022
Project Name: COTTON DRAW
Project Number: NOT GIVEN
Project Location: ETC

Sampling Date: 04/28/2022
Sampling Type: Soil
Sampling Condition: Cool & Intact
Sample Received By: Shalyn Rodriguez

Sample ID: HZ3 - SURFACE (H221827-14)

BTX 8021B		mg/kg		Analyzed By: MS\					
Analyte	Result	Reporting Limit	Analyzed	Method Blank	BS	% Recovery	True Value QC	RPD	Qualifier
Benzene*	<0.050	0.050	05/06/2022	ND	2.13	106	2.00	2.90	
Toluene*	<0.050	0.050	05/06/2022	ND	2.08	104	2.00	3.51	
Ethylbenzene*	<0.050	0.050	05/06/2022	ND	2.03	102	2.00	3.03	
Total Xylenes*	<0.150	0.150	05/06/2022	ND	6.32	105	6.00	3.00	
Total BTX	<0.300	0.300	05/06/2022	ND					

Surrogate: 4-Bromofluorobenzene (PID) 104 % 69.9-140

Chloride, SM4500CI-B		mg/kg		Analyzed By: AC						
Analyte	Result	Reporting Limit	Analyzed	Method Blank	BS	% Recovery	True Value QC	RPD	Qualifier	
Chloride	<16.0	16.0	05/05/2022	ND	432	108	400	0.00		

TPH 8015M		mg/kg		Analyzed By: MS					
Analyte	Result	Reporting Limit	Analyzed	Method Blank	BS	% Recovery	True Value QC	RPD	Qualifier
GRO C6-C10*	<10.0	10.0	05/05/2022	ND	194	96.9	200	0.272	
DRO >C10-C28*	<10.0	10.0	05/05/2022	ND	190	95.0	200	0.758	
EXT DRO >C28-C36	<10.0	10.0	05/05/2022	ND					

Surrogate: 1-Chlorooctane 90.8 % 66.9-136

Surrogate: 1-Chlorooctadecane 91.2 % 59.5-142

Cardinal Laboratories

*=Accredited Analyte

PLEASE NOTE: Liability and Damages. Cardinal's liability and client's exclusive remedy for any claim arising, whether based in contract or tort, shall be limited to the amount paid by client for analyses. All claims, including those for negligence and any other cause whatsoever shall be deemed waived unless made in writing and received by Cardinal within thirty (30) days after completion of the applicable service. In no event shall Cardinal be liable for incidental or consequential damages, including, without limitation, business interruptions, loss of use, or loss of profits incurred by client, its subsidiaries, affiliates or successors arising out of or related to the performance of the services hereunder by Cardinal, regardless of whether such claim is based upon any of the above stated reasons or otherwise. Results relate only to the samples identified above. This report shall not be reproduced except in full with written approval of Cardinal Laboratories.

Celey D. Keene, Lab Director/Quality Manager



PHONE (575) 393-2326 ° 101 E. MARLAND ° HOBBS, NM 88240

Analytical Results For:

HAZMAT SPECIAL SERVICES
LINDSEY NEVELS
8610 S EUNICE HWY
HOBBS NM, 88240
Fax To:

Received: 05/03/2022
Reported: 05/09/2022
Project Name: COTTON DRAW
Project Number: NOT GIVEN
Project Location: ETC

Sampling Date: 04/28/2022
Sampling Type: Soil
Sampling Condition: Cool & Intact
Sample Received By: Shalyn Rodriguez

Sample ID: HZ2 - 1' (H221827-13)

BTEX 8021B		mg/kg		Analyzed By: MS\						
Analyte	Result	Reporting Limit	Analyzed	Method Blank	BS	% Recovery	True Value QC	RPD	Qualifier	
Benzene*	<0.050	0.050	05/06/2022	ND	2.13	106	2.00	2.90		
Toluene*	<0.050	0.050	05/06/2022	ND	2.08	104	2.00	3.51		
Ethylbenzene*	<0.050	0.050	05/06/2022	ND	2.03	102	2.00	3.03		
Total Xylenes*	<0.150	0.150	05/06/2022	ND	6.32	105	6.00	3.00		
Total BTEX	<0.300	0.300	05/06/2022	ND						

Surrogate: 4-Bromofluorobenzene (PID) 102 % 69.9-140

Chloride, SM4500CI-B		mg/kg		Analyzed By: AC						
Analyte	Result	Reporting Limit	Analyzed	Method Blank	BS	% Recovery	True Value QC	RPD	Qualifier	
Chloride	<16.0	16.0	05/05/2022	ND	432	108	400	0.00		

TPH 8015M		mg/kg		Analyzed By: MS					
Analyte	Result	Reporting Limit	Analyzed	Method Blank	BS	% Recovery	True Value QC	RPD	Qualifier
GRO C6-C10*	<10.0	10.0	05/05/2022	ND	194	96.9	200	0.272	
DRO >C10-C28*	<10.0	10.0	05/05/2022	ND	190	95.0	200	0.758	
EXT DRO >C28-C36	<10.0	10.0	05/05/2022	ND					

Surrogate: 1-Chlorooctane 80.1 % 66.9-136

Surrogate: 1-Chlorooctadecane 80.3 % 59.5-142

Cardinal Laboratories

*=Accredited Analyte

PLEASE NOTE: Liability and Damages. Cardinal's liability and client's exclusive remedy for any claim arising, whether based in contract or tort, shall be limited to the amount paid by client for analyses. All claims, including those for negligence and any other cause whatsoever shall be deemed waived unless made in writing and received by Cardinal within thirty (30) days after completion of the applicable service. In no event shall Cardinal be liable for incidental or consequential damages, including, without limitation, business interruptions, loss of use, or loss of profits incurred by client, its subsidiaries, affiliates or successors arising out of or related to the performance of the services hereunder by Cardinal, regardless of whether such claim is based upon any of the above stated reasons or otherwise. Results relate only to the samples identified above. This report shall not be reproduced except in full with written approval of Cardinal Laboratories.

Celey D. Keene, Lab Director/Quality Manager



PHONE (575) 393-2326 ° 101 E. MARLAND ° HOBBS, NM 88240

Analytical Results For:

HAZMAT SPECIAL SERVICES
LINDSEY NEVELS
8610 S EUNICE HWY
HOBBS NM, 88240
Fax To:

Received: 05/03/2022
Reported: 05/09/2022
Project Name: COTTON DRAW
Project Number: NOT GIVEN
Project Location: ETC

Sampling Date: 04/28/2022
Sampling Type: Soil
Sampling Condition: Cool & Intact
Sample Received By: Shalyn Rodriguez

Sample ID: HZ2 - SURFACE (H221827-12)

BTX 8021B		mg/kg		Analyzed By: MS\					
Analyte	Result	Reporting Limit	Analyzed	Method Blank	BS	% Recovery	True Value QC	RPD	Qualifier
Benzene*	<0.050	0.050	05/06/2022	ND	2.13	106	2.00	2.90	
Toluene*	<0.050	0.050	05/06/2022	ND	2.08	104	2.00	3.51	
Ethylbenzene*	<0.050	0.050	05/06/2022	ND	2.03	102	2.00	3.03	
Total Xylenes*	<0.150	0.150	05/06/2022	ND	6.32	105	6.00	3.00	
Total BTX	<0.300	0.300	05/06/2022	ND					

Surrogate: 4-Bromofluorobenzene (PID) 102 % 69.9-140

Chloride, SM4500CI-B		mg/kg		Analyzed By: AC						
Analyte	Result	Reporting Limit	Analyzed	Method Blank	BS	% Recovery	True Value QC	RPD	Qualifier	
Chloride	<16.0	16.0	05/05/2022	ND	432	108	400	0.00		

TPH 8015M		mg/kg		Analyzed By: MS					
Analyte	Result	Reporting Limit	Analyzed	Method Blank	BS	% Recovery	True Value QC	RPD	Qualifier
GRO C6-C10*	<10.0	10.0	05/05/2022	ND	194	96.9	200	0.272	
DRO >C10-C28*	<10.0	10.0	05/05/2022	ND	190	95.0	200	0.758	
EXT DRO >C28-C36	<10.0	10.0	05/05/2022	ND					

Surrogate: 1-Chlorooctane 78.1 % 66.9-136

Surrogate: 1-Chlorooctadecane 78.3 % 59.5-142

Cardinal Laboratories

*=Accredited Analyte

PLEASE NOTE: Liability and Damages. Cardinal's liability and client's exclusive remedy for any claim arising, whether based in contract or tort, shall be limited to the amount paid by client for analyses. All claims, including those for negligence and any other cause whatsoever shall be deemed waived unless made in writing and received by Cardinal within thirty (30) days after completion of the applicable service. In no event shall Cardinal be liable for incidental or consequential damages, including, without limitation, business interruptions, loss of use, or loss of profits incurred by client, its subsidiaries, affiliates or successors arising out of or related to the performance of the services hereunder by Cardinal, regardless of whether such claim is based upon any of the above stated reasons or otherwise. Results relate only to the samples identified above. This report shall not be reproduced except in full with written approval of Cardinal Laboratories.

Celey D. Keene, Lab Director/Quality Manager



PHONE (575) 393-2326 ° 101 E. MARLAND ° HOBBS, NM 88240

Analytical Results For:

HAZMAT SPECIAL SERVICES
LINDSEY NEVELS
8610 S EUNICE HWY
HOBBS NM, 88240
Fax To:

Received: 05/03/2022
Reported: 05/09/2022
Project Name: COTTON DRAW
Project Number: NOT GIVEN
Project Location: ETC

Sampling Date: 04/28/2022
Sampling Type: Soil
Sampling Condition: Cool & Intact
Sample Received By: Shalyn Rodriguez

Sample ID: HZ1 - 1' (H221827-11)

BTEx 8021B		mg/kg		Analyzed By: MS\						
Analyte	Result	Reporting Limit	Analyzed	Method Blank	BS	% Recovery	True Value QC	RPD	Qualifier	
Benzene*	<0.050	0.050	05/06/2022	ND	2.13	106	2.00	2.90		
Toluene*	<0.050	0.050	05/06/2022	ND	2.08	104	2.00	3.51		
Ethylbenzene*	<0.050	0.050	05/06/2022	ND	2.03	102	2.00	3.03		
Total Xylenes*	<0.150	0.150	05/06/2022	ND	6.32	105	6.00	3.00		
Total BTEx	<0.300	0.300	05/06/2022	ND						

Surrogate: 4-Bromofluorobenzene (PID) 102 % 69.9-140

Chloride, SM4500CI-B		mg/kg		Analyzed By: AC						
Analyte	Result	Reporting Limit	Analyzed	Method Blank	BS	% Recovery	True Value QC	RPD	Qualifier	
Chloride	16.0	16.0	05/05/2022	ND	432	108	400	0.00		

TPH 8015M		mg/kg		Analyzed By: MS					
Analyte	Result	Reporting Limit	Analyzed	Method Blank	BS	% Recovery	True Value QC	RPD	Qualifier
GRO C6-C10*	<10.0	10.0	05/05/2022	ND	194	96.9	200	0.272	
DRO >C10-C28*	<10.0	10.0	05/05/2022	ND	190	95.0	200	0.758	
EXT DRO >C28-C36	<10.0	10.0	05/05/2022	ND					

Surrogate: 1-Chlorooctane 80.9 % 66.9-136

Surrogate: 1-Chlorooctadecane 81.7 % 59.5-142

Cardinal Laboratories

*=Accredited Analyte

PLEASE NOTE: Liability and Damages. Cardinal's liability and client's exclusive remedy for any claim arising, whether based in contract or tort, shall be limited to the amount paid by client for analyses. All claims, including those for negligence and any other cause whatsoever shall be deemed waived unless made in writing and received by Cardinal within thirty (30) days after completion of the applicable service. In no event shall Cardinal be liable for incidental or consequential damages, including, without limitation, business interruptions, loss of use, or loss of profits incurred by client, its subsidiaries, affiliates or successors arising out of or related to the performance of the services hereunder by Cardinal, regardless of whether such claim is based upon any of the above stated reasons or otherwise. Results relate only to the samples identified above. This report shall not be reproduced except in full with written approval of Cardinal Laboratories.

Celey D. Keene, Lab Director/Quality Manager



PHONE (575) 393-2326 • 101 E. MARLAND • HOBBS, NM 88240

Analytical Results For:

HAZMAT SPECIAL SERVICES
LINDSEY NEVELS
8610 S EUNICE HWY
HOBBS NM, 88240
Fax To:

Received: 05/03/2022
Reported: 05/09/2022
Project Name: COTTON DRAW
Project Number: NOT GIVEN
Project Location: ETC

Sampling Date: 04/28/2022
Sampling Type: Soil
Sampling Condition: Cool & Intact
Sample Received By: Shalyn Rodriguez

Sample ID: HZ1 - SURFACE (H221827-10)

BTEx 8021B		mg/kg		Analyzed By: MS\						
Analyte	Result	Reporting Limit	Analyzed	Method Blank	BS	% Recovery	True Value QC	RPD	Qualifier	
Benzene*	<0.050	0.050	05/06/2022	ND	2.13	106	2.00	2.90		
Toluene*	<0.050	0.050	05/06/2022	ND	2.08	104	2.00	3.51		
Ethylbenzene*	<0.050	0.050	05/06/2022	ND	2.03	102	2.00	3.03		
Total Xylenes*	<0.150	0.150	05/06/2022	ND	6.32	105	6.00	3.00		
Total BTEx	<0.300	0.300	05/06/2022	ND						

Surrogate: 4-Bromofluorobenzene (PID) 104 % 69.9-140

Chloride, SM4500CI-B		mg/kg		Analyzed By: AC						
Analyte	Result	Reporting Limit	Analyzed	Method Blank	BS	% Recovery	True Value QC	RPD	Qualifier	
Chloride	32.0	16.0	05/05/2022	ND	432	108	400	0.00		

TPH 8015M		mg/kg		Analyzed By: MS					
Analyte	Result	Reporting Limit	Analyzed	Method Blank	BS	% Recovery	True Value QC	RPD	Qualifier
GRO C6-C10*	<10.0	10.0	05/05/2022	ND	194	96.9	200	0.272	
DRO >C10-C28*	<10.0	10.0	05/05/2022	ND	190	95.0	200	0.758	
EXT DRO >C28-C36	<10.0	10.0	05/05/2022	ND					

Surrogate: 1-Chlorooctane 74.1 % 66.9-136

Surrogate: 1-Chlorooctadecane 74.8 % 59.5-142

Cardinal Laboratories

*=Accredited Analyte

PLEASE NOTE: Liability and Damages. Cardinal's liability and client's exclusive remedy for any claim arising, whether based in contract or tort, shall be limited to the amount paid by client for analyses. All claims, including those for negligence and any other cause whatsoever shall be deemed waived unless made in writing and received by Cardinal within thirty (30) days after completion of the applicable service. In no event shall Cardinal be liable for incidental or consequential damages, including, without limitation, business interruptions, loss of use, or loss of profits incurred by client, its subsidiaries, affiliates or successors arising out of or related to the performance of the services hereunder by Cardinal, regardless of whether such claim is based upon any of the above stated reasons or otherwise. Results relate only to the samples identified above. This report shall not be reproduced except in full with written approval of Cardinal Laboratories.

Celey D. Keene, Lab Director/Quality Manager



PHONE (575) 393-2326 ° 101 E. MARLAND ° HOBBS, NM 88240

Analytical Results For:

HAZMAT SPECIAL SERVICES
LINDSEY NEVELS
8610 S EUNICE HWY
HOBBS NM, 88240
Fax To:

Received: 05/03/2022
Reported: 05/09/2022
Project Name: COTTON DRAW
Project Number: NOT GIVEN
Project Location: ETC

Sampling Date: 04/28/2022
Sampling Type: Soil
Sampling Condition: Cool & Intact
Sample Received By: Shalyn Rodriguez

Sample ID: BACKGROUND (H221827-09)

BTX 8021B		mg/kg		Analyzed By: MS\					
Analyte	Result	Reporting Limit	Analyzed	Method Blank	BS	% Recovery	True Value QC	RPD	Qualifier
Benzene*	<0.050	0.050	05/06/2022	ND	2.18	109	2.00	0.291	
Toluene*	<0.050	0.050	05/06/2022	ND	2.15	107	2.00	0.217	
Ethylbenzene*	<0.050	0.050	05/06/2022	ND	2.12	106	2.00	0.636	
Total Xylenes*	<0.150	0.150	05/06/2022	ND	6.59	110	6.00	1.08	
Total BTX	<0.300	0.300	05/06/2022	ND					

Surrogate: 4-Bromofluorobenzene (PID) 101 % 69.9-140

Chloride, SM4500CI-B		mg/kg		Analyzed By: AC						
Analyte	Result	Reporting Limit	Analyzed	Method Blank	BS	% Recovery	True Value QC	RPD	Qualifier	
Chloride	32.0	16.0	05/05/2022	ND	432	108	400	0.00		

TPH 8015M		mg/kg		Analyzed By: MS					
Analyte	Result	Reporting Limit	Analyzed	Method Blank	BS	% Recovery	True Value QC	RPD	Qualifier
GRO C6-C10*	<10.0	10.0	05/05/2022	ND	194	96.9	200	0.272	
DRO >C10-C28*	<10.0	10.0	05/05/2022	ND	190	95.0	200	0.758	
EXT DRO >C28-C36	<10.0	10.0	05/05/2022	ND					

Surrogate: 1-Chlorooctane 82.2 % 66.9-136

Surrogate: 1-Chlorooctadecane 83.5 % 59.5-142

Cardinal Laboratories

*=Accredited Analyte

PLEASE NOTE: Liability and Damages. Cardinal's liability and client's exclusive remedy for any claim arising, whether based in contract or tort, shall be limited to the amount paid by client for analyses. All claims, including those for negligence and any other cause whatsoever shall be deemed waived unless made in writing and received by Cardinal within thirty (30) days after completion of the applicable service. In no event shall Cardinal be liable for incidental or consequential damages, including, without limitation, business interruptions, loss of use, or loss of profits incurred by client, its subsidiaries, affiliates or successors arising out of or related to the performance of the services hereunder by Cardinal, regardless of whether such claim is based upon any of the above stated reasons or otherwise. Results relate only to the samples identified above. This report shall not be reproduced except in full with written approval of Cardinal Laboratories.

Celey D. Keene, Lab Director/Quality Manager



PHONE (575) 393-2326 ° 101 E. MARLAND ° HOBBS, NM 88240

Analytical Results For:

HAZMAT SPECIAL SERVICES
LINDSEY NEVELS
8610 S EUNICE HWY
HOBBS NM, 88240
Fax To:

Received: 05/03/2022
Reported: 05/09/2022
Project Name: COTTON DRAW
Project Number: NOT GIVEN
Project Location: ETC

Sampling Date: 04/28/2022
Sampling Type: Soil
Sampling Condition: Cool & Intact
Sample Received By: Shalyn Rodriguez

Sample ID: SP4 - 2' (H221827-08)

BTX 8021B		mg/kg		Analyzed By: MS\						
Analyte	Result	Reporting Limit	Analyzed	Method Blank	BS	% Recovery	True Value QC	RPD	Qualifier	
Benzene*	<0.050	0.050	05/06/2022	ND	2.18	109	2.00	0.291		
Toluene*	<0.050	0.050	05/06/2022	ND	2.15	107	2.00	0.217		
Ethylbenzene*	<0.050	0.050	05/06/2022	ND	2.12	106	2.00	0.636		
Total Xylenes*	<0.150	0.150	05/06/2022	ND	6.59	110	6.00	1.08		
Total BTX	<0.300	0.300	05/06/2022	ND						

Surrogate: 4-Bromofluorobenzene (PID) 102 % 69.9-140

Chloride, SM4500CI-B		mg/kg		Analyzed By: AC						
Analyte	Result	Reporting Limit	Analyzed	Method Blank	BS	% Recovery	True Value QC	RPD	Qualifier	
Chloride	<16.0	16.0	05/05/2022	ND	432	108	400	0.00		

TPH 8015M		mg/kg		Analyzed By: MS					
Analyte	Result	Reporting Limit	Analyzed	Method Blank	BS	% Recovery	True Value QC	RPD	Qualifier
GRO C6-C10*	<10.0	10.0	05/05/2022	ND	194	96.9	200	0.272	
DRO >C10-C28*	<10.0	10.0	05/05/2022	ND	190	95.0	200	0.758	
EXT DRO >C28-C36	<10.0	10.0	05/05/2022	ND					

Surrogate: 1-Chlorooctane 77.9 % 66.9-136

Surrogate: 1-Chlorooctadecane 78.3 % 59.5-142

Cardinal Laboratories

*=Accredited Analyte

PLEASE NOTE: Liability and Damages. Cardinal's liability and client's exclusive remedy for any claim arising, whether based in contract or tort, shall be limited to the amount paid by client for analyses. All claims, including those for negligence and any other cause whatsoever shall be deemed waived unless made in writing and received by Cardinal within thirty (30) days after completion of the applicable service. In no event shall Cardinal be liable for incidental or consequential damages, including, without limitation, business interruptions, loss of use, or loss of profits incurred by client, its subsidiaries, affiliates or successors arising out of or related to the performance of the services hereunder by Cardinal, regardless of whether such claim is based upon any of the above stated reasons or otherwise. Results relate only to the samples identified above. This report shall not be reproduced except in full with written approval of Cardinal Laboratories.

Celey D. Keene, Lab Director/Quality Manager



PHONE (575) 393-2326 • 101 E. MARLAND • HOBBS, NM 88240

Analytical Results For:

HAZMAT SPECIAL SERVICES
LINDSEY NEVELS
8610 S EUNICE HWY
HOBBS NM, 88240
Fax To:

Received: 05/03/2022
Reported: 05/09/2022
Project Name: COTTON DRAW
Project Number: NOT GIVEN
Project Location: ETC

Sampling Date: 04/28/2022
Sampling Type: Soil
Sampling Condition: Cool & Intact
Sample Received By: Shalyn Rodriguez

Sample ID: SP4 - SURFACE (H221827-07)

BTEx 8021B		mg/kg		Analyzed By: MS\						
Analyte	Result	Reporting Limit	Analyzed	Method Blank	BS	% Recovery	True Value QC	RPD	Qualifier	
Benzene*	<0.050	0.050	05/06/2022	ND	2.18	109	2.00	0.291		
Toluene*	<0.050	0.050	05/06/2022	ND	2.15	107	2.00	0.217		
Ethylbenzene*	<0.050	0.050	05/06/2022	ND	2.12	106	2.00	0.636		
Total Xylenes*	<0.150	0.150	05/06/2022	ND	6.59	110	6.00	1.08		
Total BTEx	<0.300	0.300	05/06/2022	ND						

Surrogate: 4-Bromofluorobenzene (PID) 101 % 69.9-140

Chloride, SM4500Cl-B		mg/kg		Analyzed By: AC						
Analyte	Result	Reporting Limit	Analyzed	Method Blank	BS	% Recovery	True Value QC	RPD	Qualifier	
Chloride	32.0	16.0	05/05/2022	ND	432	108	400	0.00		

TPH 8015M		mg/kg		Analyzed By: MS					
Analyte	Result	Reporting Limit	Analyzed	Method Blank	BS	% Recovery	True Value QC	RPD	Qualifier
GRO C6-C10*	<10.0	10.0	05/05/2022	ND	194	96.9	200	0.272	
DRO >C10-C28*	107	10.0	05/05/2022	ND	190	95.0	200	0.758	
EXT DRO >C28-C36	10.2	10.0	05/05/2022	ND					

Surrogate: 1-Chlorooctane 91.7 % 66.9-136

Surrogate: 1-Chlorooctadecane 87.6 % 59.5-142

Cardinal Laboratories

*=Accredited Analyte

PLEASE NOTE: Liability and Damages. Cardinal's liability and client's exclusive remedy for any claim arising, whether based in contract or tort, shall be limited to the amount paid by client for analyses. All claims, including those for negligence and any other cause whatsoever shall be deemed waived unless made in writing and received by Cardinal within thirty (30) days after completion of the applicable service. In no event shall Cardinal be liable for incidental or consequential damages, including, without limitation, business interruptions, loss of use, or loss of profits incurred by client, its subsidiaries, affiliates or successors arising out of or related to the performance of the services hereunder by Cardinal, regardless of whether such claim is based upon any of the above stated reasons or otherwise. Results relate only to the samples identified above. This report shall not be reproduced except in full with written approval of Cardinal Laboratories.

Celey D. Keene, Lab Director/Quality Manager



PHONE (575) 393-2326 ° 101 E. MARLAND ° HOBBS, NM 88240

Analytical Results For:

HAZMAT SPECIAL SERVICES
LINDSEY NEVELS
8610 S EUNICE HWY
HOBBS NM, 88240
Fax To:

Received: 05/03/2022
Reported: 05/09/2022
Project Name: COTTON DRAW
Project Number: NOT GIVEN
Project Location: ETC

Sampling Date: 04/28/2022
Sampling Type: Soil
Sampling Condition: Cool & Intact
Sample Received By: Shalyn Rodriguez

Sample ID: SP3 - 5' (H221827-06)

BTX 8021B		mg/kg	Analyzed By: MS\					S-04	
Analyte	Result	Reporting Limit	Analyzed	Method Blank	BS	% Recovery	True Value QC	RPD	Qualifier
Benzene*	0.131	0.050	05/06/2022	ND	2.18	109	2.00	0.291	
Toluene*	5.09	0.050	05/06/2022	ND	2.15	107	2.00	0.217	GC-NC1
Ethylbenzene*	<0.050	0.050	05/06/2022	ND	2.12	106	2.00	0.636	
Total Xylenes*	20.8	0.150	05/06/2022	ND	6.59	110	6.00	1.08	GC-NC1
Total BTX	26.1	0.300	05/06/2022	ND					GC-NC1

Surrogate: 4-Bromofluorobenzene (PID) 310 % 69.9-140

Chloride, SM4500CI-B		mg/kg	Analyzed By: AC						
Analyte	Result	Reporting Limit	Analyzed	Method Blank	BS	% Recovery	True Value QC	RPD	Qualifier
Chloride	2680	16.0	05/05/2022	ND	432	108	400	0.00	

TPH 8015M		mg/kg	Analyzed By: MS					S-04	
Analyte	Result	Reporting Limit	Analyzed	Method Blank	BS	% Recovery	True Value QC	RPD	Qualifier
GRO C6-C10*	746	10.0	05/05/2022	ND	194	96.9	200	0.272	
DRO >C10-C28*	4470	10.0	05/05/2022	ND	190	95.0	200	0.758	
EXT DRO >C28-C36	194	10.0	05/05/2022	ND					

Surrogate: 1-Chlorooctane 241 % 66.9-136

Surrogate: 1-Chlorooctadecane 134 % 59.5-142

Cardinal Laboratories

*=Accredited Analyte

PLEASE NOTE: Liability and Damages. Cardinal's liability and client's exclusive remedy for any claim arising, whether based in contract or tort, shall be limited to the amount paid by client for analyses. All claims, including those for negligence and any other cause whatsoever shall be deemed waived unless made in writing and received by Cardinal within thirty (30) days after completion of the applicable service. In no event shall Cardinal be liable for incidental or consequential damages, including, without limitation, business interruptions, loss of use, or loss of profits incurred by client, its subsidiaries, affiliates or successors arising out of or related to the performance of the services hereunder by Cardinal, regardless of whether such claim is based upon any of the above stated reasons or otherwise. Results relate only to the samples identified above. This report shall not be reproduced except in full with written approval of Cardinal Laboratories.

Celey D. Keene, Lab Director/Quality Manager



PHONE (575) 393-2326 • 101 E. MARLAND • HOBBS, NM 88240

Analytical Results For:

HAZMAT SPECIAL SERVICES
LINDSEY NEVELS
8610 S EUNICE HWY
HOBBS NM, 88240
Fax To:

Received: 05/03/2022
Reported: 05/09/2022
Project Name: COTTON DRAW
Project Number: NOT GIVEN
Project Location: ETC

Sampling Date: 04/28/2022
Sampling Type: Soil
Sampling Condition: Cool & Intact
Sample Received By: Shalyn Rodriguez

Sample ID: SP3 - SURFACE (H221827-05)

BTX 8021B		mg/kg	Analyzed By: MS\					S-04	
Analyte	Result	Reporting Limit	Analyzed	Method Blank	BS	% Recovery	True Value QC	RPD	Qualifier
Benzene*	<0.200	0.200	05/06/2022	ND	2.18	109	2.00	0.291	
Toluene*	4.59	0.200	05/06/2022	ND	2.15	107	2.00	0.217	GC-NC1
Ethylbenzene*	<0.200	0.200	05/06/2022	ND	2.12	106	2.00	0.636	
Total Xylenes*	24.4	0.600	05/06/2022	ND	6.59	110	6.00	1.08	GC-NC1
Total BTX	29.0	1.20	05/06/2022	ND					GC-NC1

Surrogate: 4-Bromofluorobenzene (PID) 188 % 69.9-140

Chloride, SM4500CI-B		mg/kg	Analyzed By: AC						
Analyte	Result	Reporting Limit	Analyzed	Method Blank	BS	% Recovery	True Value QC	RPD	Qualifier
Chloride	2640	16.0	05/05/2022	ND	432	108	400	0.00	

TPH 8015M		mg/kg	Analyzed By: MS					S-04	
Analyte	Result	Reporting Limit	Analyzed	Method Blank	BS	% Recovery	True Value QC	RPD	Qualifier
GRO C6-C10*	1110	10.0	05/05/2022	ND	194	96.9	200	0.272	
DRO >C10-C28*	6020	10.0	05/05/2022	ND	190	95.0	200	0.758	
EXT DRO >C28-C36	293	10.0	05/05/2022	ND					

Surrogate: 1-Chlorooctane 286 % 66.9-136

Surrogate: 1-Chlorooctadecane 172 % 59.5-142

Cardinal Laboratories

*=Accredited Analyte

PLEASE NOTE: Liability and Damages. Cardinal's liability and client's exclusive remedy for any claim arising, whether based in contract or tort, shall be limited to the amount paid by client for analyses. All claims, including those for negligence and any other cause whatsoever shall be deemed waived unless made in writing and received by Cardinal within thirty (30) days after completion of the applicable service. In no event shall Cardinal be liable for incidental or consequential damages, including, without limitation, business interruptions, loss of use, or loss of profits incurred by client, its subsidiaries, affiliates or successors arising out of or related to the performance of the services hereunder by Cardinal, regardless of whether such claim is based upon any of the above stated reasons or otherwise. Results relate only to the samples identified above. This report shall not be reproduced except in full with written approval of Cardinal Laboratories.

Celey D. Keene, Lab Director/Quality Manager



PHONE (575) 393-2326 ° 101 E. MARLAND ° HOBBS, NM 88240

May 23, 2022

EDDIE GAYTAN

HAZMAT SPECIAL SERVICES

8610 S EUNICE HWY

HOBBS, NM 88240

RE: COTTON DRAW

Enclosed are the results of analyses for samples received by the laboratory on 05/18/22 15:05.

Cardinal Laboratories is accredited through Texas NELAP under certificate number T104704398-21-14. Accreditation applies to drinking water, non-potable water and solid and chemical materials. All accredited analytes are denoted by an asterisk (*). For a complete list of accredited analytes and matrices visit the TCEQ website at www.tceq.texas.gov/field/qa/lab_accred_certif.html.

Cardinal Laboratories is accredited through the State of Colorado Department of Public Health and Environment for:

Method EPA 552.2	Haloacetic Acids (HAA-5)
Method EPA 524.2	Total Trihalomethanes (TTHM)
Method EPA 524.4	Regulated VOCs (V1, V2, V3)

Accreditation applies to public drinking water matrices.

This report meets NELAP requirements and is made up of a cover page, analytical results, and a copy of the original chain-of-custody. If you have any questions concerning this report, please feel free to contact me.

Sincerely,

A handwritten signature in blue ink that reads "Celey D. Keene". The signature is written in a cursive, flowing style.

Celey D. Keene

Lab Director/Quality Manager



PHONE (575) 393-2326 ° 101 E. MARLAND ° HOBBS, NM 88240

Analytical Results For:

HAZMAT SPECIAL SERVICES
 EDDIE GAYTAN
 8610 S EUNICE HWY
 HOBBS NM, 88240
 Fax To:

Received: 05/18/2022
 Reported: 05/23/2022
 Project Name: COTTON DRAW
 Project Number: NOT GIVEN
 Project Location: ETC

Sampling Date: 05/13/2022
 Sampling Type: Soil
 Sampling Condition: Cool & Intact
 Sample Received By: Tamara Oldaker

Sample ID: SP 2 - SURFACE (H222115-01)

BTEX 8021B	mg/kg	Analyzed By: MS/						S-04	
Analyte	Result	Reporting Limit	Analyzed	Method Blank	BS	% Recovery	True Value QC	RPD	Qualifier
Benzene*	<0.050	0.050	05/19/2022	ND	2.00	99.8	2.00	1.90	
Toluene*	0.884	0.050	05/19/2022	ND	2.00	100	2.00	2.45	GC-NC1
Ethylbenzene*	0.794	0.050	05/19/2022	ND	1.90	94.9	2.00	2.54	
Total Xylenes*	17.6	0.150	05/19/2022	ND	5.91	98.5	6.00	2.88	
Total BTEX	19.2	0.300	05/19/2022	ND					

Surrogate: 4-Bromofluorobenzene (PIE) 155 % 69.9-140

Chloride, SM4500Cl-B	mg/kg	Analyzed By: AC							
Analyte	Result	Reporting Limit	Analyzed	Method Blank	BS	% Recovery	True Value QC	RPD	Qualifier
Chloride	2240	16.0	05/19/2022	ND	432	108	400	0.00	

TPH 8015M	mg/kg	Analyzed By: MS						S-04	
Analyte	Result	Reporting Limit	Analyzed	Method Blank	BS	% Recovery	True Value QC	RPD	Qualifier
GRO C6-C10*	359	10.0	05/19/2022	ND	206	103	200	7.07	
DRO >C10-C28*	2650	10.0	05/19/2022	ND	195	97.7	200	2.65	
EXT DRO >C28-C36	36.6	10.0	05/19/2022	ND					

Surrogate: 1-Chlorooctane 166 % 66.9-136

Surrogate: 1-Chlorooctadecane 134 % 59.5-142

Cardinal Laboratories

*=Accredited Analyte

PLEASE NOTE: Liability and Damages. Cardinal's liability and client's exclusive remedy for any claim arising, whether based in contract or tort, shall be limited to the amount paid by client for analyses. All claims, including those for negligence and any other cause whatsoever shall be deemed waived unless made in writing and received by Cardinal within thirty (30) days after completion of the applicable service. In no event shall Cardinal be liable for incidental or consequential damages, including, without limitation, business interruptions, loss of use, or loss of profits incurred by client, its subsidiaries, affiliates or successors arising out of or related to the performance of the services hereunder by Cardinal, regardless of whether such claim is based upon any of the above stated reasons or otherwise. Results relate only to the samples identified above. This report shall not be reproduced except in full with written approval of Cardinal Laboratories.

Celey D. Keene, Lab Director/Quality Manager



PHONE (575) 393-2326 ° 101 E. MARLAND ° HOBBS, NM 88240

Analytical Results For:

HAZMAT SPECIAL SERVICES
 EDDIE GAYTAN
 8610 S EUNICE HWY
 HOBBS NM, 88240
 Fax To:

Received: 05/18/2022
 Reported: 05/23/2022
 Project Name: COTTON DRAW
 Project Number: NOT GIVEN
 Project Location: ETC

Sampling Date: 05/13/2022
 Sampling Type: Soil
 Sampling Condition: Cool & Intact
 Sample Received By: Tamara Oldaker

Sample ID: SP 2 - 4' (H222115-02)

BTEx 8021B		mg/kg		Analyzed By: MS/						
Analyte	Result	Reporting Limit	Analyzed	Method Blank	BS	% Recovery	True Value QC	RPD	Qualifier	
Benzene*	<0.050	0.050	05/19/2022	ND	2.00	99.8	2.00	1.90		
Toluene*	<0.050	0.050	05/19/2022	ND	2.00	100	2.00	2.45		
Ethylbenzene*	<0.050	0.050	05/19/2022	ND	1.90	94.9	2.00	2.54		
Total Xylenes*	<0.150	0.150	05/19/2022	ND	5.91	98.5	6.00	2.88		
Total BTEX	<0.300	0.300	05/19/2022	ND						

Surrogate: 4-Bromofluorobenzene (PIC) 102 % 69.9-140

Chloride, SM4500CI-B		mg/kg		Analyzed By: AC					
Analyte	Result	Reporting Limit	Analyzed	Method Blank	BS	% Recovery	True Value QC	RPD	Qualifier
Chloride	48.0	16.0	05/19/2022	ND	432	108	400	0.00	

TPH 8015M		mg/kg		Analyzed By: MS					
Analyte	Result	Reporting Limit	Analyzed	Method Blank	BS	% Recovery	True Value QC	RPD	Qualifier
GRO C6-C10*	<10.0	10.0	05/19/2022	ND	206	103	200	7.07	
DRO >C10-C28*	<10.0	10.0	05/19/2022	ND	195	97.7	200	2.65	
EXT DRO >C28-C36	<10.0	10.0	05/19/2022	ND					

Surrogate: 1-Chlorooctane 106 % 66.9-136

Surrogate: 1-Chlorooctadecane 111 % 59.5-142

Cardinal Laboratories

*=Accredited Analyte

PLEASE NOTE: Liability and Damages. Cardinal's liability and client's exclusive remedy for any claim arising, whether based in contract or tort, shall be limited to the amount paid by client for analyses. All claims, including those for negligence and any other cause whatsoever shall be deemed waived unless made in writing and received by Cardinal within thirty (30) days after completion of the applicable service. In no event shall Cardinal be liable for incidental or consequential damages, including, without limitation, business interruptions, loss of use, or loss of profits incurred by client, its subsidiaries, affiliates or successors arising out of or related to the performance of the services hereunder by Cardinal, regardless of whether such claim is based upon any of the above stated reasons or otherwise. Results relate only to the samples identified above. This report shall not be reproduced except in full with written approval of Cardinal Laboratories.

Celey D. Keene, Lab Director/Quality Manager



PHONE (575) 393-2326 ° 101 E. MARLAND ° HOBBS, NM 88240

Analytical Results For:

HAZMAT SPECIAL SERVICES
 EDDIE GAYTAN
 8610 S EUNICE HWY
 HOBBS NM, 88240
 Fax To:

Received: 05/18/2022
 Reported: 05/23/2022
 Project Name: COTTON DRAW
 Project Number: NOT GIVEN
 Project Location: ETC

Sampling Date: 05/13/2022
 Sampling Type: Soil
 Sampling Condition: Cool & Intact
 Sample Received By: Tamara Oldaker

Sample ID: SP 3 - 5' (H222115-03)

BTEx 8021B		mg/kg	Analyzed By: MS/					S-04	
Analyte	Result	Reporting Limit	Analyzed	Method Blank	BS	% Recovery	True Value QC	RPD	Qualifier
Benzene*	<0.500	0.500	05/20/2022	ND	2.00	99.8	2.00	1.90	
Toluene*	10.8	0.500	05/20/2022	ND	2.00	100	2.00	2.45	GC-NC1
Ethylbenzene*	6.89	0.500	05/20/2022	ND	1.90	94.9	2.00	2.54	
Total Xylenes*	136	1.50	05/20/2022	ND	5.91	98.5	6.00	2.88	
Total BTEx	153	3.00	05/20/2022	ND					

Surrogate: 4-Bromofluorobenzene (PIC) 171 % 69.9-140

Chloride, SM4500CI-B		mg/kg	Analyzed By: AC						
Analyte	Result	Reporting Limit	Analyzed	Method Blank	BS	% Recovery	True Value QC	RPD	Qualifier
Chloride	32.0	16.0	05/19/2022	ND	432	108	400	0.00	

TPH 8015M		mg/kg	Analyzed By: MS					S-04	
Analyte	Result	Reporting Limit	Analyzed	Method Blank	BS	% Recovery	True Value QC	RPD	Qualifier
GRO C6-C10*	3170	10.0	05/19/2022	ND	206	103	200	7.07	
DRO >C10-C28*	5080	10.0	05/19/2022	ND	195	97.7	200	2.65	
EXT DRO >C28-C36	182	10.0	05/19/2022	ND					

Surrogate: 1-Chlorooctane 501 % 66.9-136

Surrogate: 1-Chlorooctadecane 173 % 59.5-142

Cardinal Laboratories

*=Accredited Analyte

PLEASE NOTE: Liability and Damages. Cardinal's liability and client's exclusive remedy for any claim arising, whether based in contract or tort, shall be limited to the amount paid by client for analyses. All claims, including those for negligence and any other cause whatsoever shall be deemed waived unless made in writing and received by Cardinal within thirty (30) days after completion of the applicable service. In no event shall Cardinal be liable for incidental or consequential damages, including, without limitation, business interruptions, loss of use, or loss of profits incurred by client, its subsidiaries, affiliates or successors arising out of or related to the performance of the services hereunder by Cardinal, regardless of whether such claim is based upon any of the above stated reasons or otherwise. Results relate only to the samples identified above. This report shall not be reproduced except in full with written approval of Cardinal Laboratories.

Celey D. Keene, Lab Director/Quality Manager



PHONE (575) 393-2326 ° 101 E. MARLAND ° HOBBS, NM 88240

Analytical Results For:

HAZMAT SPECIAL SERVICES
 EDDIE GAYTAN
 8610 S EUNICE HWY
 HOBBS NM, 88240
 Fax To:

Received: 05/18/2022
 Reported: 05/23/2022
 Project Name: COTTON DRAW
 Project Number: NOT GIVEN
 Project Location: ETC

Sampling Date: 05/13/2022
 Sampling Type: Soil
 Sampling Condition: Cool & Intact
 Sample Received By: Tamara Oldaker

Sample ID: SP 3 - 6' (H222115-04)

BTEx 8021B		mg/kg		Analyzed By: MS/						
Analyte	Result	Reporting Limit	Analyzed	Method Blank	BS	% Recovery	True Value QC	RPD	Qualifier	
Benzene*	<0.050	0.050	05/19/2022	ND	2.00	99.8	2.00	1.90		
Toluene*	<0.050	0.050	05/19/2022	ND	2.00	100	2.00	2.45		
Ethylbenzene*	<0.050	0.050	05/19/2022	ND	1.90	94.9	2.00	2.54		
Total Xylenes*	<0.150	0.150	05/19/2022	ND	5.91	98.5	6.00	2.88		
Total BTEX	<0.300	0.300	05/19/2022	ND						

Surrogate: 4-Bromofluorobenzene (PIC) 101 % 69.9-140

Chloride, SM4500CI-B		mg/kg		Analyzed By: AC						
Analyte	Result	Reporting Limit	Analyzed	Method Blank	BS	% Recovery	True Value QC	RPD	Qualifier	
Chloride	32.0	16.0	05/19/2022	ND	432	108	400	0.00		

TPH 8015M		mg/kg		Analyzed By: MS					
Analyte	Result	Reporting Limit	Analyzed	Method Blank	BS	% Recovery	True Value QC	RPD	Qualifier
GRO C6-C10*	<10.0	10.0	05/19/2022	ND	206	103	200	7.07	
DRO >C10-C28*	<10.0	10.0	05/19/2022	ND	195	97.7	200	2.65	
EXT DRO >C28-C36	<10.0	10.0	05/19/2022	ND					

Surrogate: 1-Chlorooctane 108 % 66.9-136

Surrogate: 1-Chlorooctadecane 114 % 59.5-142

Cardinal Laboratories

*=Accredited Analyte

PLEASE NOTE: Liability and Damages. Cardinal's liability and client's exclusive remedy for any claim arising, whether based in contract or tort, shall be limited to the amount paid by client for analyses. All claims, including those for negligence and any other cause whatsoever shall be deemed waived unless made in writing and received by Cardinal within thirty (30) days after completion of the applicable service. In no event shall Cardinal be liable for incidental or consequential damages, including, without limitation, business interruptions, loss of use, or loss of profits incurred by client, its subsidiaries, affiliates or successors arising out of or related to the performance of the services hereunder by Cardinal, regardless of whether such claim is based upon any of the above stated reasons or otherwise. Results relate only to the samples identified above. This report shall not be reproduced except in full with written approval of Cardinal Laboratories.

Celey D. Keene, Lab Director/Quality Manager



PHONE (575) 393-2326 ° 101 E. MARLAND ° HOBBS, NM 88240

Analytical Results For:

HAZMAT SPECIAL SERVICES
 EDDIE GAYTAN
 8610 S EUNICE HWY
 HOBBS NM, 88240
 Fax To:

Received: 05/18/2022
 Reported: 05/23/2022
 Project Name: COTTON DRAW
 Project Number: NOT GIVEN
 Project Location: ETC

Sampling Date: 05/13/2022
 Sampling Type: Soil
 Sampling Condition: Cool & Intact
 Sample Received By: Tamara Oldaker

Sample ID: HZ 4 - SURFACE (H222115-05)

BTEx 8021B		mg/kg		Analyzed By: MS/						
Analyte	Result	Reporting Limit	Analyzed	Method Blank	BS	% Recovery	True Value QC	RPD	Qualifier	
Benzene*	<0.050	0.050	05/19/2022	ND	2.00	99.8	2.00	1.90		
Toluene*	<0.050	0.050	05/19/2022	ND	2.00	100	2.00	2.45		
Ethylbenzene*	<0.050	0.050	05/19/2022	ND	1.90	94.9	2.00	2.54		
Total Xylenes*	<0.150	0.150	05/19/2022	ND	5.91	98.5	6.00	2.88		
Total BTEX	<0.300	0.300	05/19/2022	ND						

Surrogate: 4-Bromofluorobenzene (PIC) 103 % 69.9-140

Chloride, SM4500CI-B		mg/kg		Analyzed By: AC					
Analyte	Result	Reporting Limit	Analyzed	Method Blank	BS	% Recovery	True Value QC	RPD	Qualifier
Chloride	80.0	16.0	05/19/2022	ND	432	108	400	0.00	

TPH 8015M		mg/kg		Analyzed By: MS					
Analyte	Result	Reporting Limit	Analyzed	Method Blank	BS	% Recovery	True Value QC	RPD	Qualifier
GRO C6-C10*	10.5	10.0	05/19/2022	ND	206	103	200	7.07	
DRO >C10-C28*	23.7	10.0	05/19/2022	ND	195	97.7	200	2.65	
EXT DRO >C28-C36	<10.0	10.0	05/19/2022	ND					

Surrogate: 1-Chlorooctane 125 % 66.9-136

Surrogate: 1-Chlorooctadecane 129 % 59.5-142

Cardinal Laboratories

*=Accredited Analyte

PLEASE NOTE: Liability and Damages. Cardinal's liability and client's exclusive remedy for any claim arising, whether based in contract or tort, shall be limited to the amount paid by client for analyses. All claims, including those for negligence and any other cause whatsoever shall be deemed waived unless made in writing and received by Cardinal within thirty (30) days after completion of the applicable service. In no event shall Cardinal be liable for incidental or consequential damages, including, without limitation, business interruptions, loss of use, or loss of profits incurred by client, its subsidiaries, affiliates or successors arising out of or related to the performance of the services hereunder by Cardinal, regardless of whether such claim is based upon any of the above stated reasons or otherwise. Results relate only to the samples identified above. This report shall not be reproduced except in full with written approval of Cardinal Laboratories.

Celey D. Keene, Lab Director/Quality Manager



PHONE (575) 393-2326 ° 101 E. MARLAND ° HOBBS, NM 88240

Analytical Results For:

HAZMAT SPECIAL SERVICES
 EDDIE GAYTAN
 8610 S EUNICE HWY
 HOBBS NM, 88240
 Fax To:

Received: 05/18/2022
 Reported: 05/23/2022
 Project Name: COTTON DRAW
 Project Number: NOT GIVEN
 Project Location: ETC

Sampling Date: 05/13/2022
 Sampling Type: Soil
 Sampling Condition: Cool & Intact
 Sample Received By: Tamara Oldaker

Sample ID: HZ 4 - 1' (H222115-06)

BTEX 8021B		mg/kg		Analyzed By: MS/						
Analyte	Result	Reporting Limit	Analyzed	Method Blank	BS	% Recovery	True Value QC	RPD	Qualifier	
Benzene*	<0.050	0.050	05/19/2022	ND	2.00	99.8	2.00	1.90		
Toluene*	<0.050	0.050	05/19/2022	ND	2.00	100	2.00	2.45		
Ethylbenzene*	<0.050	0.050	05/19/2022	ND	1.90	94.9	2.00	2.54		
Total Xylenes*	<0.150	0.150	05/19/2022	ND	5.91	98.5	6.00	2.88		
Total BTEX	<0.300	0.300	05/19/2022	ND						

Surrogate: 4-Bromofluorobenzene (PIC) 103 % 69.9-140

Chloride, SM4500CI-B		mg/kg		Analyzed By: AC						
Analyte	Result	Reporting Limit	Analyzed	Method Blank	BS	% Recovery	True Value QC	RPD	Qualifier	
Chloride	48.0	16.0	05/19/2022	ND	432	108	400	0.00		

TPH 8015M	mg/kg		Analyzed By: MS					S-04	
Analyte	Result	Reporting Limit	Analyzed	Method Blank	BS	% Recovery	True Value QC	RPD	Qualifier
GRO C6-C10*	11.6	10.0	05/19/2022	ND	206	103	200	7.07	
DRO >C10-C28*	39.7	10.0	05/19/2022	ND	195	97.7	200	2.65	
EXT DRO >C28-C36	<10.0	10.0	05/19/2022	ND					

Surrogate: 1-Chlorooctane 137 % 66.9-136

Surrogate: 1-Chlorooctadecane 139 % 59.5-142

Cardinal Laboratories

*=Accredited Analyte

PLEASE NOTE: Liability and Damages. Cardinal's liability and client's exclusive remedy for any claim arising, whether based in contract or tort, shall be limited to the amount paid by client for analyses. All claims, including those for negligence and any other cause whatsoever shall be deemed waived unless made in writing and received by Cardinal within thirty (30) days after completion of the applicable service. In no event shall Cardinal be liable for incidental or consequential damages, including, without limitation, business interruptions, loss of use, or loss of profits incurred by client, its subsidiaries, affiliates or successors arising out of or related to the performance of the services hereunder by Cardinal, regardless of whether such claim is based upon any of the above stated reasons or otherwise. Results relate only to the samples identified above. This report shall not be reproduced except in full with written approval of Cardinal Laboratories.

Celey D. Keene, Lab Director/Quality Manager



PHONE (575) 393-2326 ° 101 E. MARLAND ° HOBBS, NM 88240

Analytical Results For:

HAZMAT SPECIAL SERVICES
 EDDIE GAYTAN
 8610 S EUNICE HWY
 HOBBS NM, 88240
 Fax To:

Received: 05/18/2022
 Reported: 05/23/2022
 Project Name: COTTON DRAW
 Project Number: NOT GIVEN
 Project Location: ETC

Sampling Date: 05/13/2022
 Sampling Type: Soil
 Sampling Condition: Cool & Intact
 Sample Received By: Tamara Oldaker

Sample ID: HZ 5 - SURFACE (H222115-07)

BTEX 8021B		mg/kg		Analyzed By: MS/						
Analyte	Result	Reporting Limit	Analyzed	Method Blank	BS	% Recovery	True Value QC	RPD	Qualifier	
Benzene*	<0.050	0.050	05/19/2022	ND	2.00	99.8	2.00	1.90		
Toluene*	<0.050	0.050	05/19/2022	ND	2.00	100	2.00	2.45		
Ethylbenzene*	<0.050	0.050	05/19/2022	ND	1.90	94.9	2.00	2.54		
Total Xylenes*	<0.150	0.150	05/19/2022	ND	5.91	98.5	6.00	2.88		
Total BTEX	<0.300	0.300	05/19/2022	ND						

Surrogate: 4-Bromofluorobenzene (PIC) 103 % 69.9-140

Chloride, SM4500CI-B		mg/kg		Analyzed By: AC						
Analyte	Result	Reporting Limit	Analyzed	Method Blank	BS	% Recovery	True Value QC	RPD	Qualifier	
Chloride	64.0	16.0	05/19/2022	ND	432	108	400	0.00		

TPH 8015M		mg/kg		Analyzed By: MS					
Analyte	Result	Reporting Limit	Analyzed	Method Blank	BS	% Recovery	True Value QC	RPD	Qualifier
GRO C6-C10*	<10.0	10.0	05/19/2022	ND	207	103	200	6.09	
DRO >C10-C28*	37.7	10.0	05/19/2022	ND	215	107	200	8.55	
EXT DRO >C28-C36	<10.0	10.0	05/19/2022	ND					

Surrogate: 1-Chlorooctane 102 % 66.9-136

Surrogate: 1-Chlorooctadecane 110 % 59.5-142

Cardinal Laboratories

*=Accredited Analyte

PLEASE NOTE: Liability and Damages. Cardinal's liability and client's exclusive remedy for any claim arising, whether based in contract or tort, shall be limited to the amount paid by client for analyses. All claims, including those for negligence and any other cause whatsoever shall be deemed waived unless made in writing and received by Cardinal within thirty (30) days after completion of the applicable service. In no event shall Cardinal be liable for incidental or consequential damages, including, without limitation, business interruptions, loss of use, or loss of profits incurred by client, its subsidiaries, affiliates or successors arising out of or related to the performance of the services hereunder by Cardinal, regardless of whether such claim is based upon any of the above stated reasons or otherwise. Results relate only to the samples identified above. This report shall not be reproduced except in full with written approval of Cardinal Laboratories.

Celey D. Keene, Lab Director/Quality Manager



PHONE (575) 393-2326 ° 101 E. MARLAND ° HOBBS, NM 88240

Analytical Results For:

HAZMAT SPECIAL SERVICES
 EDDIE GAYTAN
 8610 S EUNICE HWY
 HOBBS NM, 88240
 Fax To:

Received: 05/18/2022
 Reported: 05/23/2022
 Project Name: COTTON DRAW
 Project Number: NOT GIVEN
 Project Location: ETC

Sampling Date: 05/13/2022
 Sampling Type: Soil
 Sampling Condition: Cool & Intact
 Sample Received By: Tamara Oldaker

Sample ID: HZ 5 - 1' (H222115-08)

BTEX 8021B		mg/kg		Analyzed By: MS/						
Analyte	Result	Reporting Limit	Analyzed	Method Blank	BS	% Recovery	True Value QC	RPD	Qualifier	
Benzene*	<0.050	0.050	05/19/2022	ND	2.00	99.8	2.00	1.90		
Toluene*	<0.050	0.050	05/19/2022	ND	2.00	100	2.00	2.45		
Ethylbenzene*	<0.050	0.050	05/19/2022	ND	1.90	94.9	2.00	2.54		
Total Xylenes*	<0.150	0.150	05/19/2022	ND	5.91	98.5	6.00	2.88		
Total BTEX	<0.300	0.300	05/19/2022	ND						

Surrogate: 4-Bromofluorobenzene (PIC) 104 % 69.9-140

Chloride, SM4500CI-B		mg/kg		Analyzed By: AC						
Analyte	Result	Reporting Limit	Analyzed	Method Blank	BS	% Recovery	True Value QC	RPD	Qualifier	
Chloride	48.0	16.0	05/19/2022	ND	432	108	400	0.00		

TPH 8015M		mg/kg		Analyzed By: MS					
Analyte	Result	Reporting Limit	Analyzed	Method Blank	BS	% Recovery	True Value QC	RPD	Qualifier
GRO C6-C10*	<10.0	10.0	05/19/2022	ND	207	103	200	6.09	
DRO >C10-C28*	33.0	10.0	05/19/2022	ND	215	107	200	8.55	
EXT DRO >C28-C36	<10.0	10.0	05/19/2022	ND					

Surrogate: 1-Chlorooctane 95.6 % 66.9-136

Surrogate: 1-Chlorooctadecane 110 % 59.5-142

Cardinal Laboratories

*=Accredited Analyte

PLEASE NOTE: Liability and Damages. Cardinal's liability and client's exclusive remedy for any claim arising, whether based in contract or tort, shall be limited to the amount paid by client for analyses. All claims, including those for negligence and any other cause whatsoever shall be deemed waived unless made in writing and received by Cardinal within thirty (30) days after completion of the applicable service. In no event shall Cardinal be liable for incidental or consequential damages, including, without limitation, business interruptions, loss of use, or loss of profits incurred by client, its subsidiaries, affiliates or successors arising out of or related to the performance of the services hereunder by Cardinal, regardless of whether such claim is based upon any of the above stated reasons or otherwise. Results relate only to the samples identified above. This report shall not be reproduced except in full with written approval of Cardinal Laboratories.

Celey D. Keene, Lab Director/Quality Manager



PHONE (575) 393-2326 ° 101 E. MARLAND ° HOBBS, NM 88240

Analytical Results For:

HAZMAT SPECIAL SERVICES
 EDDIE GAYTAN
 8610 S EUNICE HWY
 HOBBS NM, 88240
 Fax To:

Received: 05/18/2022
 Reported: 05/23/2022
 Project Name: COTTON DRAW
 Project Number: NOT GIVEN
 Project Location: ETC

Sampling Date: 05/13/2022
 Sampling Type: Soil
 Sampling Condition: Cool & Intact
 Sample Received By: Tamara Oldaker

Sample ID: HZ 6 - A - SURFACE (H222115-09)

BTEx 8021B		mg/kg		Analyzed By: MS\						
Analyte	Result	Reporting Limit	Analyzed	Method Blank	BS	% Recovery	True Value QC	RPD	Qualifier	
Benzene*	<0.050	0.050	05/19/2022	ND	2.04	102	2.00	2.82		
Toluene*	<0.050	0.050	05/19/2022	ND	2.01	101	2.00	2.85		
Ethylbenzene*	<0.050	0.050	05/19/2022	ND	1.97	98.7	2.00	3.29		
Total Xylenes*	<0.150	0.150	05/19/2022	ND	6.07	101	6.00	3.60		
Total BTEx	<0.300	0.300	05/19/2022	ND						

Surrogate: 4-Bromofluorobenzene (PIC) 102 % 69.9-140

Chloride, SM4500CI-B		mg/kg		Analyzed By: AC						
Analyte	Result	Reporting Limit	Analyzed	Method Blank	BS	% Recovery	True Value QC	RPD	Qualifier	
Chloride	16.0	16.0	05/19/2022	ND	432	108	400	0.00		

TPH 8015M		mg/kg	Analyzed By: MS						
Analyte	Result	Reporting Limit	Analyzed	Method Blank	BS	% Recovery	True Value QC	RPD	Qualifier
GRO C6-C10*	<10.0	10.0	05/19/2022	ND	207	103	200	6.09	
DRO >C10-C28*	20.8	10.0	05/19/2022	ND	215	107	200	8.55	
EXT DRO >C28-C36	<10.0	10.0	05/19/2022	ND					

Surrogate: 1-Chlorooctane 104 % 66.9-136

Surrogate: 1-Chlorooctadecane 116 % 59.5-142

Cardinal Laboratories

*=Accredited Analyte

PLEASE NOTE: Liability and Damages. Cardinal's liability and client's exclusive remedy for any claim arising, whether based in contract or tort, shall be limited to the amount paid by client for analyses. All claims, including those for negligence and any other cause whatsoever shall be deemed waived unless made in writing and received by Cardinal within thirty (30) days after completion of the applicable service. In no event shall Cardinal be liable for incidental or consequential damages, including, without limitation, business interruptions, loss of use, or loss of profits incurred by client, its subsidiaries, affiliates or successors arising out of or related to the performance of the services hereunder by Cardinal, regardless of whether such claim is based upon any of the above stated reasons or otherwise. Results relate only to the samples identified above. This report shall not be reproduced except in full with written approval of Cardinal Laboratories.

Celey D. Keene, Lab Director/Quality Manager



PHONE (575) 393-2326 ° 101 E. MARLAND ° HOBBS, NM 88240

Analytical Results For:

HAZMAT SPECIAL SERVICES
 EDDIE GAYTAN
 8610 S EUNICE HWY
 HOBBS NM, 88240
 Fax To:

Received: 05/18/2022
 Reported: 05/23/2022
 Project Name: COTTON DRAW
 Project Number: NOT GIVEN
 Project Location: ETC

Sampling Date: 05/13/2022
 Sampling Type: Soil
 Sampling Condition: Cool & Intact
 Sample Received By: Tamara Oldaker

Sample ID: HZ 6 - A - 1' (H222115-10)

BTEx 8021B		mg/kg		Analyzed By: MS\						
Analyte	Result	Reporting Limit	Analyzed	Method Blank	BS	% Recovery	True Value QC	RPD	Qualifier	
Benzene*	<0.050	0.050	05/19/2022	ND	2.04	102	2.00	2.82		
Toluene*	<0.050	0.050	05/19/2022	ND	2.01	101	2.00	2.85		
Ethylbenzene*	<0.050	0.050	05/19/2022	ND	1.97	98.7	2.00	3.29		
Total Xylenes*	<0.150	0.150	05/19/2022	ND	6.07	101	6.00	3.60		
Total BTEx	<0.300	0.300	05/19/2022	ND						

Surrogate: 4-Bromofluorobenzene (PIC) 102 % 69.9-140

Chloride, SM4500CI-B		mg/kg		Analyzed By: AC						
Analyte	Result	Reporting Limit	Analyzed	Method Blank	BS	% Recovery	True Value QC	RPD	Qualifier	
Chloride	16.0	16.0	05/19/2022	ND	432	108	400	0.00		

TPH 8015M		mg/kg		Analyzed By: MS					
Analyte	Result	Reporting Limit	Analyzed	Method Blank	BS	% Recovery	True Value QC	RPD	Qualifier
GRO C6-C10*	<10.0	10.0	05/19/2022	ND	207	103	200	6.09	
DRO >C10-C28*	23.6	10.0	05/19/2022	ND	215	107	200	8.55	
EXT DRO >C28-C36	<10.0	10.0	05/19/2022	ND					

Surrogate: 1-Chlorooctane 97.1 % 66.9-136

Surrogate: 1-Chlorooctadecane 111 % 59.5-142

Cardinal Laboratories

*=Accredited Analyte

PLEASE NOTE: Liability and Damages. Cardinal's liability and client's exclusive remedy for any claim arising, whether based in contract or tort, shall be limited to the amount paid by client for analyses. All claims, including those for negligence and any other cause whatsoever shall be deemed waived unless made in writing and received by Cardinal within thirty (30) days after completion of the applicable service. In no event shall Cardinal be liable for incidental or consequential damages, including, without limitation, business interruptions, loss of use, or loss of profits incurred by client, its subsidiaries, affiliates or successors arising out of or related to the performance of the services hereunder by Cardinal, regardless of whether such claim is based upon any of the above stated reasons or otherwise. Results relate only to the samples identified above. This report shall not be reproduced except in full with written approval of Cardinal Laboratories.

Celey D. Keene, Lab Director/Quality Manager



PHONE (575) 393-2326 ° 101 E. MARLAND ° HOBBS, NM 88240

Analytical Results For:

HAZMAT SPECIAL SERVICES
 EDDIE GAYTAN
 8610 S EUNICE HWY
 HOBBS NM, 88240
 Fax To:

Received: 05/18/2022
 Reported: 05/23/2022
 Project Name: COTTON DRAW
 Project Number: NOT GIVEN
 Project Location: ETC

Sampling Date: 05/13/2022
 Sampling Type: Soil
 Sampling Condition: Cool & Intact
 Sample Received By: Tamara Oldaker

Sample ID: SP 5 - SURFACE (H222115-11)

BTEX 8021B		mg/kg		Analyzed By: MS\						
Analyte	Result	Reporting Limit	Analyzed	Method Blank	BS	% Recovery	True Value QC	RPD	Qualifier	
Benzene*	<0.050	0.050	05/19/2022	ND	2.04	102	2.00	2.82		
Toluene*	<0.050	0.050	05/19/2022	ND	2.01	101	2.00	2.85		
Ethylbenzene*	<0.050	0.050	05/19/2022	ND	1.97	98.7	2.00	3.29		
Total Xylenes*	<0.150	0.150	05/19/2022	ND	6.07	101	6.00	3.60		
Total BTEX	<0.300	0.300	05/19/2022	ND						

Surrogate: 4-Bromofluorobenzene (PIC) 102 % 69.9-140

Chloride, SM4500CI-B		mg/kg		Analyzed By: AC						
Analyte	Result	Reporting Limit	Analyzed	Method Blank	BS	% Recovery	True Value QC	RPD	Qualifier	
Chloride	32.0	16.0	05/19/2022	ND	432	108	400	0.00		

TPH 8015M		mg/kg		Analyzed By: MS					
Analyte	Result	Reporting Limit	Analyzed	Method Blank	BS	% Recovery	True Value QC	RPD	Qualifier
GRO C6-C10*	<10.0	10.0	05/19/2022	ND	207	103	200	6.09	
DRO >C10-C28*	<10.0	10.0	05/19/2022	ND	215	107	200	8.55	
EXT DRO >C28-C36	<10.0	10.0	05/19/2022	ND					

Surrogate: 1-Chlorooctane 87.4 % 66.9-136

Surrogate: 1-Chlorooctadecane 99.8 % 59.5-142

Cardinal Laboratories

*=Accredited Analyte

PLEASE NOTE: Liability and Damages. Cardinal's liability and client's exclusive remedy for any claim arising, whether based in contract or tort, shall be limited to the amount paid by client for analyses. All claims, including those for negligence and any other cause whatsoever shall be deemed waived unless made in writing and received by Cardinal within thirty (30) days after completion of the applicable service. In no event shall Cardinal be liable for incidental or consequential damages, including, without limitation, business interruptions, loss of use, or loss of profits incurred by client, its subsidiaries, affiliates or successors arising out of or related to the performance of the services hereunder by Cardinal, regardless of whether such claim is based upon any of the above stated reasons or otherwise. Results relate only to the samples identified above. This report shall not be reproduced except in full with written approval of Cardinal Laboratories.

Celey D. Keene, Lab Director/Quality Manager



PHONE (575) 393-2326 ° 101 E. MARLAND ° HOBBS, NM 88240

Analytical Results For:

HAZMAT SPECIAL SERVICES
 EDDIE GAYTAN
 8610 S EUNICE HWY
 HOBBS NM, 88240
 Fax To:

Received: 05/18/2022
 Reported: 05/23/2022
 Project Name: COTTON DRAW
 Project Number: NOT GIVEN
 Project Location: ETC

Sampling Date: 05/13/2022
 Sampling Type: Soil
 Sampling Condition: Cool & Intact
 Sample Received By: Tamara Oldaker

Sample ID: SP 5 - 5' (H222115-12)

BTEx 8021B		mg/kg	Analyzed By: MS\					S-04	
Analyte	Result	Reporting Limit	Analyzed	Method Blank	BS	% Recovery	True Value QC	RPD	Qualifier
Benzene*	<0.050	0.050	05/19/2022	ND	2.04	102	2.00	2.82	
Toluene*	2.01	0.050	05/19/2022	ND	2.01	101	2.00	2.85	GC-NC1
Ethylbenzene*	1.28	0.050	05/19/2022	ND	1.97	98.7	2.00	3.29	
Total Xylenes*	24.3	0.150	05/19/2022	ND	6.07	101	6.00	3.60	
Total BTEx	27.6	0.300	05/19/2022	ND					

Surrogate: 4-Bromofluorobenzene (PIC) 273 % 69.9-140

Chloride, SM4500CI-B		mg/kg	Analyzed By: AC						
Analyte	Result	Reporting Limit	Analyzed	Method Blank	BS	% Recovery	True Value QC	RPD	Qualifier
Chloride	64.0	16.0	05/19/2022	ND	432	108	400	0.00	

TPH 8015M		mg/kg	Analyzed By: MS					S-04	
Analyte	Result	Reporting Limit	Analyzed	Method Blank	BS	% Recovery	True Value QC	RPD	Qualifier
GRO C6-C10*	704	10.0	05/19/2022	ND	207	103	200	6.09	
DRO >C10-C28*	1990	10.0	05/19/2022	ND	215	107	200	8.55	
EXT DRO >C28-C36	62.5	10.0	05/19/2022	ND					

Surrogate: 1-Chlorooctane 254 % 66.9-136

Surrogate: 1-Chlorooctadecane 148 % 59.5-142

Cardinal Laboratories

*=Accredited Analyte

PLEASE NOTE: Liability and Damages. Cardinal's liability and client's exclusive remedy for any claim arising, whether based in contract or tort, shall be limited to the amount paid by client for analyses. All claims, including those for negligence and any other cause whatsoever shall be deemed waived unless made in writing and received by Cardinal within thirty (30) days after completion of the applicable service. In no event shall Cardinal be liable for incidental or consequential damages, including, without limitation, business interruptions, loss of use, or loss of profits incurred by client, its subsidiaries, affiliates or successors arising out of or related to the performance of the services hereunder by Cardinal, regardless of whether such claim is based upon any of the above stated reasons or otherwise. Results relate only to the samples identified above. This report shall not be reproduced except in full with written approval of Cardinal Laboratories.

Celey D. Keene, Lab Director/Quality Manager



PHONE (575) 393-2326 • 101 E. MARLAND • HOBBS, NM 88240

Notes and Definitions

S-04	The surrogate recovery for this sample is outside of established control limits due to a sample matrix effect.
GC-NC1	8260 confirmation analysis was performed; initial GC results were not supported by GC/MS analysis and are biased high with interfering compounds.
ND	Analyte NOT DETECTED at or above the reporting limit
RPD	Relative Percent Difference
**	Samples not received at proper temperature of 6°C or below.
***	Insufficient time to reach temperature.
-	Chloride by SM4500Cl-B does not require samples be received at or below 6°C Samples reported on an as received basis (wet) unless otherwise noted on report

Cardinal Laboratories

*=Accredited Analyte

PLEASE NOTE: Liability and Damages. Cardinal's liability and client's exclusive remedy for any claim arising, whether based in contract or tort, shall be limited to the amount paid by client for analyses. All claims, including those for negligence and any other cause whatsoever shall be deemed waived unless made in writing and received by Cardinal within thirty (30) days after completion of the applicable service. In no event shall Cardinal be liable for incidental or consequential damages, including, without limitation, business interruptions, loss of use, or loss of profits incurred by client, its subsidiaries, affiliates or successors arising out of or related to the performance of the services hereunder by Cardinal, regardless of whether such claim is based upon any of the above stated reasons or otherwise. Results relate only to the samples identified above. This report shall not be reproduced except in full with written approval of Cardinal Laboratories.

A handwritten signature in blue ink, reading "C. D. Keene".

Celey D. Keene, Lab Director/Quality Manager



101 East Marland, Hobbs, NM 88240
(575) 393-2326 FAX (575) 393-2476

CHAIN-OF-CUSTODY AND ANALYSIS REQUEST

[illegible]



101 East Marland, Hobbs, NM 88240
(575) 393-2326 FAX (575) 393-2476

CHAIN-OF-CUSTODY AND ANALYSIS REQUEST

[illegible]

Attachment V

NMOCD Form C-141 Remediation Pages



Haz Mat Special Services

State of New Mexico
Oil Conservation Division

Page 4

Incident ID	
District RP	
Facility ID	
Application ID	

I hereby certify that the information given above is true and complete to the best of my knowledge and understand that pursuant to OCD rules and regulations all operators are required to report and/or file certain release notifications and perform corrective actions for releases which may endanger public health or the environment. The acceptance of a C-141 report by the OCD does not relieve the operator of liability should their operations have failed to adequately investigate and remediate contamination that pose a threat to groundwater, surface water, human health or the environment. In addition, OCD acceptance of a C-141 report does not relieve the operator of responsibility for compliance with any other federal, state, or local laws and/or regulations.

Printed Name: Dean D. Ericson Title: Sr. Environmental SpecialistSignature: Dean D. Ericson Date: 06/10/2022email: dean.ericson@energytransfer.com Telephone: 432-238-2142**OCD Only**

Received by: _____ Date: _____

Incident ID	
District RP	
Facility ID	
Application ID	

Remediation Plan

Remediation Plan Checklist: *Each of the following items must be included in the plan.*

- ☒ Detailed description of proposed remediation technique
- ☒ Scaled sitemap with GPS coordinates showing delineation points
- ☒ Estimated volume of material to be remediated
- ☒ Closure criteria is to Table 1 specifications subject to 19.15.29.12(C)(4) NMAC
- ☒ Proposed schedule for remediation (note if remediation plan timeline is more than 90 days OCD approval is required)

Deferral Requests Only: *Each of the following items must be confirmed as part of any request for deferral of remediation.*

- ☐ Contamination must be in areas immediately under or around production equipment where remediation could cause a major facility deconstruction.
- ☐ Extents of contamination must be fully delineated.
- ☐ Contamination does not cause an imminent risk to human health, the environment, or groundwater.

I hereby certify that the information given above is true and complete to the best of my knowledge and understand that pursuant to OCD rules and regulations all operators are required to report and/or file certain release notifications and perform corrective actions for releases which may endanger public health or the environment. The acceptance of a C-141 report by the OCD does not relieve the operator of liability should their operations have failed to adequately investigate and remediate contamination that pose a threat to groundwater, surface water, human health or the environment. In addition, OCD acceptance of a C-141 report does not relieve the operator of responsibility for compliance with any other federal, state, or local laws and/or regulations.

Printed Name: Dean D. Ericson Title: Sr. Environmental Specialist
Signature: Dean D. Ericson Date: 06/10/2022
email: dean.ericson@energytransfer.com Telephone: 432-238-2124

OCD Only

Received by: _____ Date: _____

☐ Approved ☒ Approved with Attached Conditions of Approval ☐ Denied ☐ Deferral Approved

Signature: Jennifer Nobui Date: 06/15/2022

Incident ID	
District RP	
Facility ID	
Application ID	

Closure

The responsible party must attach information demonstrating they have complied with all applicable closure requirements and any conditions or directives of the OCD. This demonstration should be in the form of a comprehensive report (electronic submittals in .pdf format are preferred) including a scaled site map, sampling diagrams, relevant field notes, photographs of any excavation prior to backfilling, laboratory data including chain of custody documents of final sampling, and a narrative of the remedial activities. Refer to 19.15.29.12 NMAC.

Closure Report Attachment Checklist: Each of the following items must be included in the closure report.

- ☐ A scaled site and sampling diagram as described in 19.15.29.11 NMAC
- ☐ Photographs of the remediated site prior to backfill or photos of the liner integrity if applicable (Note: appropriate OCD District office must be notified 2 days prior to liner inspection)
- ☐ Laboratory analyses of final sampling (Note: appropriate ODC District office must be notified 2 days prior to final sampling)
- ☐ Description of remediation activities

I hereby certify that the information given above is true and complete to the best of my knowledge and understand that pursuant to OCD rules and regulations all operators are required to report and/or file certain release notifications and perform corrective actions for releases which may endanger public health or the environment. The acceptance of a C-141 report by the OCD does not relieve the operator of liability should their operations have failed to adequately investigate and remediate contamination that pose a threat to groundwater, surface water, human health or the environment. In addition, OCD acceptance of a C-141 report does not relieve the operator of responsibility for compliance with any other federal, state, or local laws and/or regulations. The responsible party acknowledges they must substantially restore, reclaim, and re-vegetate the impacted surface area to the conditions that existed prior to the release or their final land use in accordance with 19.15.29.13 NMAC including notification to the OCD when reclamation and re-vegetation are complete.

Printed Name: _____ Title: _____

Signature: _____ Date: _____

email: _____ Telephone: _____

OCD Only

Received by: _____ Date: _____

Closure approval by the OCD does not relieve the responsible party of liability should their operations have failed to adequately investigate and remediate contamination that poses a threat to groundwater, surface water, human health, or the environment nor does not relieve the responsible party of compliance with any other federal, state, or local laws and/or regulations.

Closure Approved by: _____ Date: _____

Printed Name: _____ Title: _____

District I
1625 N. French Dr., Hobbs, NM 88240
Phone:(575) 393-6161 Fax:(575) 393-0720
District II
811 S. First St., Artesia, NM 88210
Phone:(575) 748-1283 Fax:(575) 748-9720
District III
1000 Rio Brazos Rd., Aztec, NM 87410
Phone:(505) 334-6178 Fax:(505) 334-6170
District IV
1220 S. St Francis Dr., Santa Fe, NM 87505
Phone:(505) 476-3470 Fax:(505) 476-3462

State of New Mexico
Energy, Minerals and Natural Resources
Oil Conservation Division
1220 S. St Francis Dr.
Santa Fe, NM 87505

COMMENTS

Action 116866

COMMENTS

Operator: ETC Texas Pipeline, Ltd. 8111 Westchester Drive Dallas, TX 75225	OGRID: 371183
	Action Number: 116866
	Action Type: [C-141] Release Corrective Action (C-141)

COMMENTS

Created By	Comment	Comment Date
jharimon	Missing a site characterization	6/14/2022

District I

1625 N. French Dr., Hobbs, NM 88240
Phone:(575) 393-6161 Fax:(575) 393-0720

District II

811 S. First St., Artesia, NM 88210
Phone:(575) 748-1283 Fax:(575) 748-9720

District III

1000 Rio Brazos Rd., Aztec, NM 87410
Phone:(505) 334-6178 Fax:(505) 334-6170

District IV

1220 S. St Francis Dr., Santa Fe, NM 87505
Phone:(505) 476-3470 Fax:(505) 476-3462

State of New Mexico
Energy, Minerals and Natural Resources
Oil Conservation Division
1220 S. St Francis Dr.
Santa Fe, NM 87505

CONDITIONS

Action 116866

CONDITIONS

Operator: ETC Texas Pipeline, Ltd. 8111 Westchester Drive Dallas, TX 75225	OGRID: 371183
	Action Number: 116866
	Action Type: [C-141] Release Corrective Action (C-141)

CONDITIONS

Created By	Condition	Condition Date
jnobui	Remediation Plan Approved with Conditions. Please note the depth to groundwater has not been adequately determined. When nearby wells are used to determine depth to groundwater, the wells should be no further than ½ mile away from the site, and data should be no more than 25 years old, and well construction information should be provided in the submission. The responsible party may choose to remediate to the most stringent levels listed in Table 1 of 19.15.29 NMAC in lieu of drilling to determine the depth to groundwater. Please complete vertical delineation at SP5.	6/15/2022