

CARMONA RESOURCES



SITE INFORMATION

Closure Report
Copperhead 31 Fee 020H (10.17.22)
Eddy County, New Mexico
Incident ID: NAPP2230536562
Unit E Sec 31 T26S R29E
32.0023°, -104.0297°

Crude Oil Release
Point of Release: Flare Fire
Release Date: 10/17/2022
Volume Released: 2.735 barrels of Crude Oil
Volume Recovered: 0 barrels of Crude Oil

CARMONA RESOURCES



Prepared for:
Concho Operating, LLC
600 West Illinois Avenue,
Midland, Texas 79701

Prepared by:
Carmona Resources, LLC
310 West Wall Street
Suite 500
Midland, Texas 79701

310 West Wall Street, Suite 415
Midland TX, 79701
432.813.1992

TABLE OF CONTENTS

1.0 SITE INFORMATION AND BACKGROUND

2.0 SITE CHARACTERIZATION AND GROUNDWATER

3.0 NMAC REGULATORY CRITERIA

4.0 SITE ASSESSMENT

5.0 REMEDIATION ACTIVITIES

6.0 CONCLUSIONS

FIGURES

FIGURE 1	OVERVIEW	FIGURE 2	TOPOGRAPHIC
FIGURE 3	SAMPLE LOCATION	FIGURE 4	EXCAVATION

APPENDICES

APPENDIX A	TABLES
APPENDIX B	PHOTOS
APPENDIX C	INITIAL C-141 AND FINAL/NMOCD CORRESPONDENCE
APPENDIX D	SITE CHARACTERIZATION AND GROUNDWATER
APPENDIX E	LABORATORY REPORTS



January 4, 2023

Mr. Mike Bratcher
District Supervisor
Oil Conservation Division, District 2
811 S. First Street
Artesia, New Mexico 88210

**Re: Closure Report
Copperhead 31 Fee 020H (10.17.22)
Concho Operating, LLC
Site Location: Unit E, S31, T26S, R29E
(Lat 32.0023°, Long -104.0297°)
Eddy County, New Mexico**

Mr. Bratcher:

On behalf of Concho Operating, LLC (COG), Carmona Resources, LLC has prepared this letter to document site remediation activities at the Copperhead 31 Fee 020H (10.17.22). The site is located at 32.0023°, -104.0297° within Unit E, S31, T26S, R29E, and in Eddy County, New Mexico (Figures 1 and 2).

1.0 Site information and Background

Based on the initial C-141 obtained from the New Mexico Oil Conservation Division (NMOCD), the release was discovered on October 10, 2022, due to a failing oil dump resulting in a flare fire. It released approximately two-point-seven-three-five (2.735) barrels of crude oil, and zero (0) barrels were recovered. The impacted area occurred on the pad and measured about 100' x 30', shown in Figure 3. The initial C-141 form is attached in Appendix C.

2.0 Site Characterization and Groundwater

The site is located within a medium karst area. Based on a review of the New Mexico Office of State Engineers and USGS databases, no known water source is located within a 0.50-mile radius of the location. The nearest identified well is approximately 2.53 miles Northwest of the site in S27, T26S, R28E and was drilled in 2017. The well has a reported depth to groundwater of 145' feet below the ground surface (ft bgs). A copy of the associated Summary Report is attached in Appendix D.

3.0 NMAC Regulatory Criteria

Per the NMOCD regulatory criteria established in 19.15.29.12 NMAC, the following criteria were utilized in assessing the site.

- Benzene: 10 milligrams per kilogram (mg/kg).
- Benzene, toluene, ethylbenzene, and total xylenes (BTEX): 50 mg/kg.
- TPH: 100 mg/kg (GRO + DRO + MRO).
- Chloride: 600 mg/kg.

4.0 Site Assessment Activities

On October 19, 2022, Carmona Resources, LLC performed site assessment activities to evaluate soil impacts stemming from the release. To assess the vertical and horizontal extent, three (3) sample points and four (4) horizontal sample points were advanced to depths ranging from the surface to 12" bgs inside the release area. See Figure 3 for the sample locations. For chemical analysis, the soil samples were collected and placed directly into laboratory-provided sample containers, stored on ice, and transported under the proper chain-of-custody protocol to Eurofins Laboratories in Midland, Texas. The samples were analyzed for total petroleum



hydrocarbons (TPH) by EPA method 8015, modified benzene, toluene, ethylbenzene, and xylenes (BTEX) by EPA Method 8021B, and chloride by EPA method 300.0. The laboratory reports, including analytical methods, results, and chain-of-custody documents, are attached in Appendix E.

The area of sample point S-1 showed a high chloride concentration of 731 mg/kg from the surface to 3" bgs and diminished with depth. The area of S-2 showed TPH, benzene, total BTEX, and chloride concentrations below the regulatory limits. However, the area of S-3 showed high TPH concentrations above the regulatory limits of 3,510 mg/kg from surface to 3" bgs. See Table 1 for the analytical results.

5.0 Remediation Activities

Carmona Resources personnel were onsite to supervise the remediation activities, collect confirmation samples, and document backfill activities. Before collecting composite confirmation samples, the NMOCD division office was notified via email on November 15, 2022, per Subsection D of 19.15.29.12 NMAC. See Appendix C. The area was excavated to a depth of 0.5' below the surface to remove all the impacted soils. A total of four (4) confirmation floor samples were collected (CS-1 through CS-4), and nine (9) sidewall samples (SW-1 through SW-9) were collected every 200 square feet to ensure the proper removal of the contaminated soils. All collected samples were analyzed for TPH analysis by EPA method 8015 modified, BTEX by EPA Method 8021B, and chloride by EPA method 4500. Copies of laboratory analysis and chain-of-custody documentation are included in Appendix E. The excavation depths and confirmation sample locations are shown in Figure 4.

All final confirmation samples were below the regulatory requirements for TPH, BTEX, and chloride. Refer to Table 2.

Once the remediation activities were completed, the excavated areas were backfilled with clean material to surface grade. Approximately 22 cubic yards of material were excavated and transported offsite for proper disposal.

6.0 Conclusions

Based on the assessment results and the analytical data, no further actions are required at the site. The final C-141 is attached, and COG formally requests the closure of the spill. If you have any questions regarding this report or need additional information, please get in touch with us at 432-813-1992.

Sincerely,

Carmona Resources, LLC

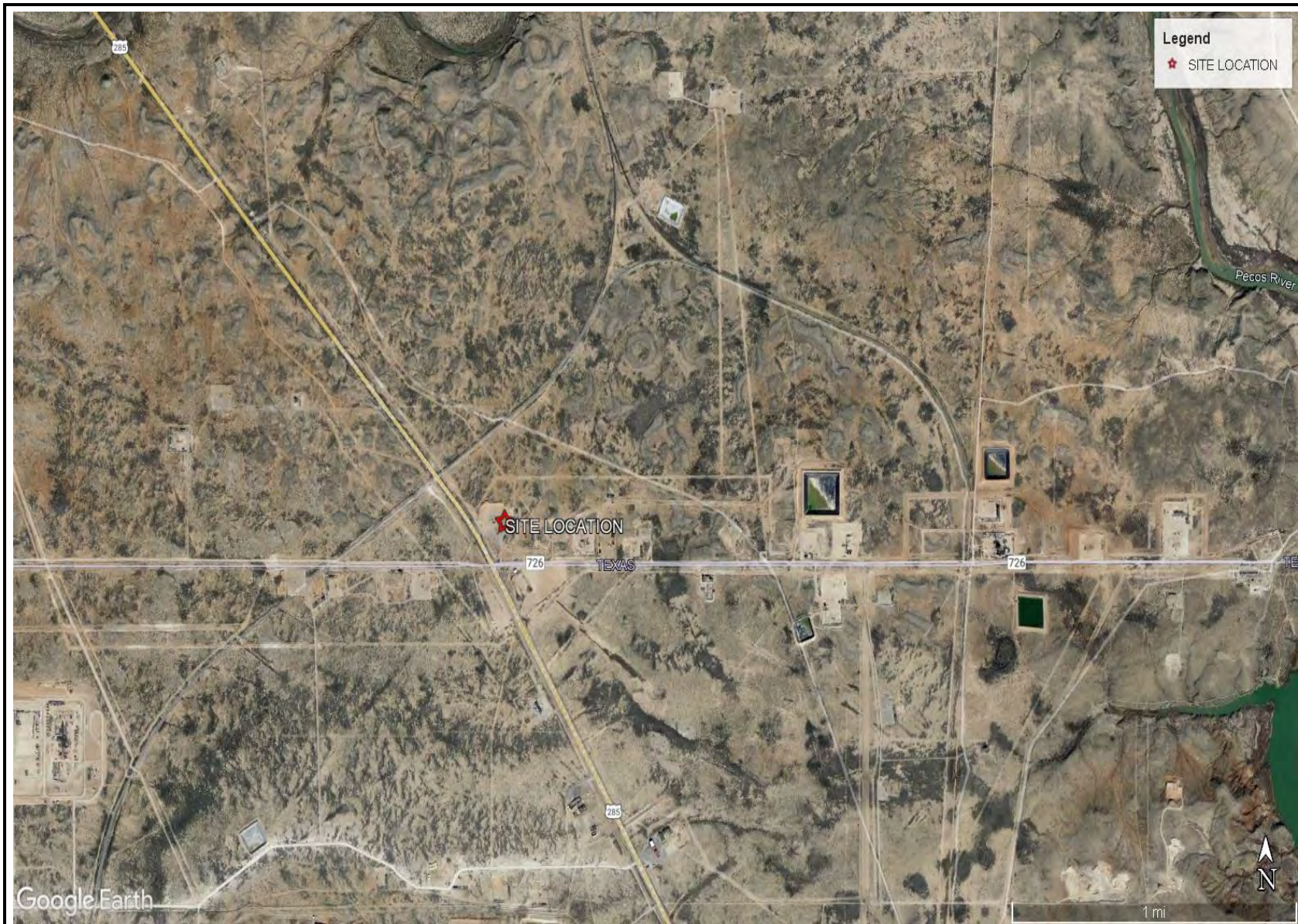
Mike Carmona
Environmental Manager

Clinton Merritt
Sr. Project Manager

FIGURES

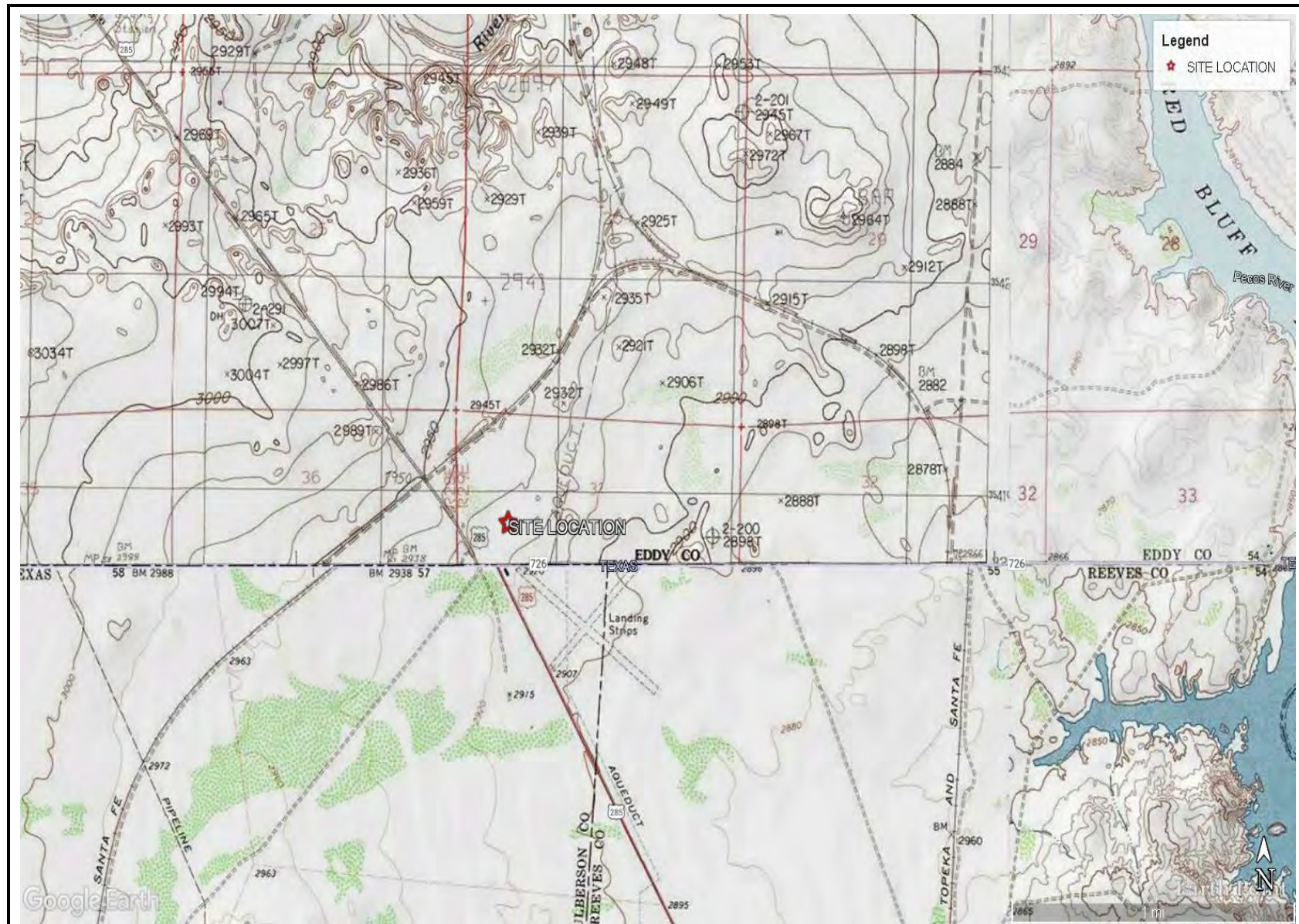
CARMONA RESOURCES





OVERVIEW MAP
COG OPERATING, LLC
COPPERHEAD 31 FEE 020H (10.17.22)
EDDY COUNTY, NEW MEXICO
32.0023 -104.0297





TOPOGRAPHIC MAP
 COG OPERATING, LLC
 COPPERHEAD 31 FEE 020H (10.17.22)
 EDDY COUNTY, NEW MEXICO
 32.0023 -104.0297







APPENDIX A

CARMONA RESOURCES



Table 1
COG
Copperhead 31 Fee 020H (10.17.22)
Eddy County, New Mexico

Sample ID	Date	Depth (in)	TPH (mg/kg)				Benzene (mg/kg)	Toluene (mg/kg)	Ethlybenzene (mg/kg)	Xylene (mg/kg)	Total BTEX (mg/kg)	Chloride (mg/kg)	
			GRO	DRO	MRO	Total							
S-1	10/19/2022	0-3	<49.8	<49.8	<49.8	<49.8	<0.00198	<0.00198	<0.00198	<0.00397	<0.00397	731	
	"	6	<49.9	<49.9	<49.9	<49.9	<0.00200	<0.00200	<0.00200	<0.00401	<0.00401	540	
	"	12	<49.8	<49.8	<49.8	<49.8	<0.00200	<0.00200	<0.00200	<0.00399	<0.00399	581	
S-2	10/19/2022	0-3	<49.9	<49.9	79.5	79.5	<0.00200	<0.00200	<0.00200	<0.00400	<0.00400	31.4	
	"	6	<49.9	<49.9	<49.9	<49.9	<0.00198	<0.00198	<0.00198	<0.00397	<0.00397	73.1	
	"	12	<49.9	<49.9	<49.9	<49.9	<0.00198	<0.00198	<0.00198	<0.00396	<0.00396	142	
S-3	10/19/2022	0-3	<50.0	1,580	1,930	3,510	<0.00200	<0.00200	<0.00200	<0.00401	<0.00401	15.8	
	"	6	<50.0	<50.0	<50.0	<50.0	<0.00202	<0.00202	<0.00202	<0.00403	<0.00403	19.7	
	"	12	<49.8	<49.8	<49.8	<49.8	<0.00198	<0.00198	<0.00198	<0.00397	<0.00397	38.3	
H-1	10/19/2022	0-6	<49.8	<49.8	<49.8	<49.8	<0.00199	<0.00199	<0.00199	<0.00398	<0.00398	21.7	
H-2	10/19/2022	0-6	<50.0	<50.0	<50.0	<50.0	<0.00198	<0.00198	<0.00198	<0.00397	<0.00397	25.3	
H-3	10/19/2022	0-6	<49.9	<49.9	<49.9	<49.9	<0.00200	<0.00200	<0.00200	<0.00401	<0.00401	13.6	
H-4	10/19/2022	0-6	<50.0	<50.0	<50.0	<50.0	<0.00202	<0.00202	<0.00202	<0.00403	<0.00403	19.9	
Regulatory Criteria ^A							100 mg/kg	10 mg/kg	-	-	-	50 mg/kg	600 mg/kg

(-) Not Analyzed

^A – Table 1 - 19.15.29 NMAC

mg/kg - milligram per kilogram

TPH- Total Petroleum Hydrocarbons

in - Inches

(S) - Sample Point

(H) - Horizontal Sample


 Removed

Table 2
COG
Copperhead 31 Fee 020H (10.17.22)
Eddy County, New Mexico

Sample ID	Date	Depth (ft)	TPH (mg/kg)				Benzene (mg/kg)	Toluene (mg/kg)	Ethlybenzene (mg/kg)	Xylene (mg/kg)	Total BTEX (mg/kg)	Chloride (mg/kg)
			GRO	DRO	MRO	Total						
CS-1	11/17/2022	0.5	<10.0	<10.0	<10.0	<10.0	<0.050	<0.050	<0.050	<0.150	<0.300	<16.0
CS-2	11/17/2022	0.5	<10.0	<10.0	<10.0	<10.0	<0.050	<0.050	<0.050	<0.150	<0.300	32.0
CS-3	11/17/2022	0.5	<10.0	<10.0	<10.0	<10.0	<0.050	<0.050	<0.050	<0.150	<0.300	16.0
CS-4	11/17/2022	0.5	<10.0	<10.0	<10.0	<10.0	<0.050	<0.050	<0.050	<0.150	<0.300	16.0
SW-1	11/17/2022	0.5	<10.0	<10.0	<10.0	<10.0	<0.050	<0.050	<0.050	<0.150	<0.300	<16.0
SW-2	11/17/2022	0.5	<10.0	<10.0	<10.0	<10.0	<0.050	<0.050	<0.050	<0.150	<0.300	<16.0
SW-3	11/17/2022	0.5	<10.0	<10.0	<10.0	<10.0	<0.050	<0.050	<0.050	<0.150	<0.300	<16.0
SW-4	11/17/2022	0.5	<10.0	18.8	<10.0	<10.0	<0.050	<0.050	<0.050	<0.150	<0.300	16.0
SW-5	11/17/2022	0.5	<10.0	<10.0	<10.0	<10.0	<0.050	<0.050	<0.050	<0.150	<0.300	32.0
SW-6	11/17/2022	0.5	<10.0	<10.0	<10.0	<10.0	<0.050	<0.050	<0.050	<0.150	<0.300	<16.0
SW-7	11/17/2022	0.5	<10.0	<10.0	<10.0	<10.0	<0.050	<0.050	<0.050	<0.150	<0.300	<16.0
SW-8	11/17/2022	0.5	<10.0	10.2	<10.0	<10.0	<0.050	<0.050	<0.050	<0.150	<0.300	<16.0
SW-9	11/17/2022	0.5	<10.0	<10.0	<10.0	<10.0	<0.050	<0.050	<0.050	<0.150	<0.300	<16.0
Regulatory Criteria ^A						100 mg/kg	10 mg/kg	-	-	-	50 mg/kg	600 mg/kg

(-) Not Analyzed

^A – Table 1 - 19.15.29 NMAC

mg/kg - milligram per kilogram

TPH- Total Petroleum Hydrocarbons

in - Inches

(CS) - Confirmation Sample

(SW) - Sidewall

APPENDIX B

CARMONA RESOURCES



PHOTOGRAPHIC LOG

Concho Operating, LLC

Photograph No. 1

Facility: Copperhead 31 Fee 020H
(10.17.22)

County: Eddy County, New Mexico

Description:

View East, area of confirmation samples (1 and 2).



Photograph No. 2

Facility: Copperhead 31 Fee 020H
(10.17.22)

County: Eddy County, New Mexico

Description:

View East, area of confirmation samples (1 and 2).



Photograph No. 3

Facility: Copperhead 31 Fee 020H
(10.17.22)

County: Eddy County, New Mexico

Description:

View East, area of confirmation samples (3 and 4).



PHOTOGRAPHIC LOG**Concho Operating, LLC****Photograph No. 4****Facility:** Copperhead 31 Fee 020H
(10.17.22)**County:** Eddy County, New Mexico**Description:**

View Northwest, area of confirmation samples (3 and 4).



APPENDIX C

CARMONA RESOURCES



District I
1625 N. French Dr., Hobbs, NM 88240
District II
811 S. First St., Artesia, NM 88210
District III
1000 Rio Brazos Road, Aztec, NM 87410
District IV
1220 S. St. Francis Dr., Santa Fe, NM 87505

State of New Mexico
Energy Minerals and Natural
Resources Department

Oil Conservation Division
1220 South St. Francis Dr.
Santa Fe, NM 87505

Form C-141
Revised August 24, 2018
Submit to appropriate OCD District office

Incident ID	
District RP	
Facility ID	
Application ID	

Release Notification

Responsible Party

Responsible Party	OGRID
Contact Name	Contact Telephone
Contact email	Incident # (assigned by OCD)
Contact mailing address	

Location of Release Source

Latitude _____ Longitude _____
(NAD 83 in decimal degrees to 5 decimal places)

Site Name	Site Type
Date Release Discovered	API# (if applicable)

Unit Letter	Section	Township	Range	County

Surface Owner: ☐ State ☐ Federal ☐ Tribal ☐ Private (Name: _____)

Nature and Volume of Release

Material(s) Released (Select all that apply and attach calculations or specific justification for the volumes provided below)

<input type="checkbox"/> Crude Oil	Volume Released (bbls)	Volume Recovered (bbls)
<input type="checkbox"/> Produced Water	Volume Released (bbls)	Volume Recovered (bbls)
	Is the concentration of dissolved chloride in the produced water >10,000 mg/l?	<input type="checkbox"/> Yes <input type="checkbox"/> No
<input type="checkbox"/> Condensate	Volume Released (bbls)	Volume Recovered (bbls)
<input type="checkbox"/> Natural Gas	Volume Released (Mcf)	Volume Recovered (Mcf)
<input type="checkbox"/> Other (describe)	Volume/Weight Released (provide units)	Volume/Weight Recovered (provide units)

Cause of Release

State of New Mexico
Oil Conservation Division

Incident ID	
District RP	
Facility ID	
Application ID	

Was this a major release as defined by 19.15.29.7(A) NMAC? <input type="checkbox"/> Yes <input type="checkbox"/> No	If YES, for what reason(s) does the responsible party consider this a major release?
If YES, was immediate notice given to the OCD? By whom? To whom? When and by what means (phone, email, etc)?	

Initial Response

The responsible party must undertake the following actions immediately unless they could create a safety hazard that would result in injury

<input type="checkbox"/> The source of the release has been stopped.	
<input type="checkbox"/> The impacted area has been secured to protect human health and the environment.	
<input type="checkbox"/> Released materials have been contained via the use of berms or dikes, absorbent pads, or other containment devices.	
<input type="checkbox"/> All free liquids and recoverable materials have been removed and managed appropriately.	
If all the actions described above have <u>not</u> been undertaken, explain why:	
Per 19.15.29.8 B. (4) NMAC the responsible party may commence remediation immediately after discovery of a release. If remediation has begun, please attach a narrative of actions to date. If remedial efforts have been successfully completed or if the release occurred within a lined containment area (see 19.15.29.11(A)(5)(a) NMAC), please attach all information needed for closure evaluation.	
I hereby certify that the information given above is true and complete to the best of my knowledge and understand that pursuant to OCD rules and regulations all operators are required to report and/or file certain release notifications and perform corrective actions for releases which may endanger public health or the environment. The acceptance of a C-141 report by the OCD does not relieve the operator of liability should their operations have failed to adequately investigate and remediate contamination that pose a threat to groundwater, surface water, human health or the environment. In addition, OCD acceptance of a C-141 report does not relieve the operator of responsibility for compliance with any other federal, state, or local laws and/or regulations.	
Printed Name: _____	Title: _____
Signature: <u>Patricia Espinoza</u>	Date: _____
email: _____	Telephone: _____
<u>OCD Only</u>	
Received by: _____	Date: _____

Incident ID	
District RP	
Facility ID	
Application ID	

Site Assessment/Characterization

This information must be provided to the appropriate district office no later than 90 days after the release discovery date.

What is the shallowest depth to groundwater beneath the area affected by the release?	_____ (ft bgs)
Did this release impact groundwater or surface water?	<input type="checkbox"/> Yes <input type="checkbox"/> No
Are the lateral extents of the release within 300 feet of a continuously flowing watercourse or any other significant watercourse?	<input type="checkbox"/> Yes <input type="checkbox"/> No
Are the lateral extents of the release within 200 feet of any lakebed, sinkhole, or playa lake (measured from the ordinary high-water mark)?	<input type="checkbox"/> Yes <input type="checkbox"/> No
Are the lateral extents of the release within 300 feet of an occupied permanent residence, school, hospital, institution, or church?	<input type="checkbox"/> Yes <input type="checkbox"/> No
Are the lateral extents of the release within 500 horizontal feet of a spring or a private domestic fresh water well used by less than five households for domestic or stock watering purposes?	<input type="checkbox"/> Yes <input type="checkbox"/> No
Are the lateral extents of the release within 1000 feet of any other fresh water well or spring?	<input type="checkbox"/> Yes <input type="checkbox"/> No
Are the lateral extents of the release within incorporated municipal boundaries or within a defined municipal fresh water well field?	<input type="checkbox"/> Yes <input type="checkbox"/> No
Are the lateral extents of the release within 300 feet of a wetland?	<input type="checkbox"/> Yes <input type="checkbox"/> No
Are the lateral extents of the release overlying a subsurface mine?	<input type="checkbox"/> Yes <input type="checkbox"/> No
Are the lateral extents of the release overlying an unstable area such as karst geology?	<input type="checkbox"/> Yes <input type="checkbox"/> No
Are the lateral extents of the release within a 100-year floodplain?	<input type="checkbox"/> Yes <input type="checkbox"/> No
Did the release impact areas not on an exploration, development, production, or storage site?	<input type="checkbox"/> Yes <input type="checkbox"/> No

Attach a comprehensive report (electronic submittals in .pdf format are preferred) demonstrating the lateral and vertical extents of soil contamination associated with the release have been determined. Refer to 19.15.29.11 NMAC for specifics.

Characterization Report Checklist: *Each of the following items must be included in the report.*

- ☐ Scaled site map showing impacted area, surface features, subsurface features, delineation points, and monitoring wells.
- ☐ Field data
- ☐ Data table of soil contaminant concentration data
- ☐ Depth to water determination
- ☐ Determination of water sources and significant watercourses within ½-mile of the lateral extents of the release
- ☐ Boring or excavation logs
- ☐ Photographs including date and GIS information
- ☐ Topographic/Aerial maps
- ☐ Laboratory data including chain of custody

If the site characterization report does not include completed efforts at remediation of the release, the report must include a proposed remediation plan. That plan must include the estimated volume of material to be remediated, the proposed remediation technique, proposed sampling plan and methods, anticipated timelines for beginning and completing the remediation. The closure criteria for a release are contained in Table 1 of 19.15.29.12 NMAC, however, use of the table is modified by site- and release-specific parameters.

State of New Mexico
Oil Conservation Division

Incident ID	
District RP	
Facility ID	
Application ID	

I hereby certify that the information given above is true and complete to the best of my knowledge and understand that pursuant to OCD rules and regulations all operators are required to report and/or file certain release notifications and perform corrective actions for releases which may endanger public health or the environment. The acceptance of a C-141 report by the OCD does not relieve the operator of liability should their operations have failed to adequately investigate and remediate contamination that pose a threat to groundwater, surface water, human health or the environment. In addition, OCD acceptance of a C-141 report does not relieve the operator of responsibility for compliance with any other federal, state, or local laws and/or regulations.

Printed Name: _____ Title: _____

Signature: Jacques Harimon Date: _____

email: _____ Telephone: _____

OCD Only

Received by: Jocelyn Harimon Date: 01/13/2023

Incident ID	
District RP	
Facility ID	
Application ID	

Closure

The responsible party must attach information demonstrating they have complied with all applicable closure requirements and any conditions or directives of the OCD. This demonstration should be in the form of a comprehensive report (electronic submittals in .pdf format are preferred) including a scaled site map, sampling diagrams, relevant field notes, photographs of any excavation prior to backfilling, laboratory data including chain of custody documents of final sampling, and a narrative of the remedial activities. Refer to 19.15.29.12 NMAC.

Closure Report Attachment Checklist: *Each of the following items must be included in the closure report.*

- ☐ A scaled site and sampling diagram as described in 19.15.29.11 NMAC
- ☐ Photographs of the remediated site prior to backfill or photos of the liner integrity if applicable (Note: appropriate OCD District office must be notified 2 days prior to liner inspection)
- ☐ Laboratory analyses of final sampling (Note: appropriate ODC District office must be notified 2 days prior to final sampling)
- ☐ Description of remediation activities

I hereby certify that the information given above is true and complete to the best of my knowledge and understand that pursuant to OCD rules and regulations all operators are required to report and/or file certain release notifications and perform corrective actions for releases which may endanger public health or the environment. The acceptance of a C-141 report by the OCD does not relieve the operator of liability should their operations have failed to adequately investigate and remediate contamination that pose a threat to groundwater, surface water, human health or the environment. In addition, OCD acceptance of a C-141 report does not relieve the operator of responsibility for compliance with any other federal, state, or local laws and/or regulations. The responsible party acknowledges they must substantially restore, reclaim, and re-vegetate the impacted surface area to the conditions that existed prior to the release or their final land use in accordance with 19.15.29.13 NMAC including notification to the OCD when reclamation and re-vegetation are complete.

Printed Name: _____ Title: _____

Signature: Jacques Harimon Date: _____

email: _____ Telephone: _____

OCD Only

Received by: Jocelyn Harimon Date: 01/13/2023

Closure approval by the OCD does not relieve the responsible party of liability should their operations have failed to adequately investigate and remediate contamination that poses a threat to groundwater, surface water, human health, or the environment nor does not relieve the responsible party of compliance with any other federal, state, or local laws and/or regulations.

Closure Approved by: Jennifer Nobui Date: _____

Printed Name: _____ Title: _____

From: Mike Carmona
Sent: Tuesday, November 15, 2022 8:27 AM
To: NMOCD Spill Notifications (OCD.Enviro@emnrd.nm.gov)
Cc: Harris, Jacqui; Conner Moehring; Clint Merritt
Subject: COG - Copperhead 31 Fee 020H (10.17.22) Sampling Notification - Incident No.NAPP2230536562

Good Morning,

On behalf of COG, Carmona Resources will collect confirmation samples for the at-risk remediation at the below-referenced site on 11/17/22 around 10:30 a.m. Mountain Time. Please let me know if you have any questions.

COG - Copperhead 31 Fee 020H (10.17.22)
Incident No.NAPP2230536562

Mike J. Carmona
310 West Wall Street, Suite 415
Midland TX, 79701
M: 432-813-1992
Mcarmona@carmonaresources.com



APPENDIX D

CARMONA RESOURCES



Nearest water well

COG Operating

Legend

- 0.50 Mile Radius
- 2.53 Miles
- 3.08 Miles
- Copperhead 31 20 (10.17.22)
- NMSEO Water Well
- USGS Water Well

22.35' - Drilled 1998

145' - Drilled 2017

US Hwy 285

Copperhead 31 20 (10.17.22)

726

726

285

1 mi

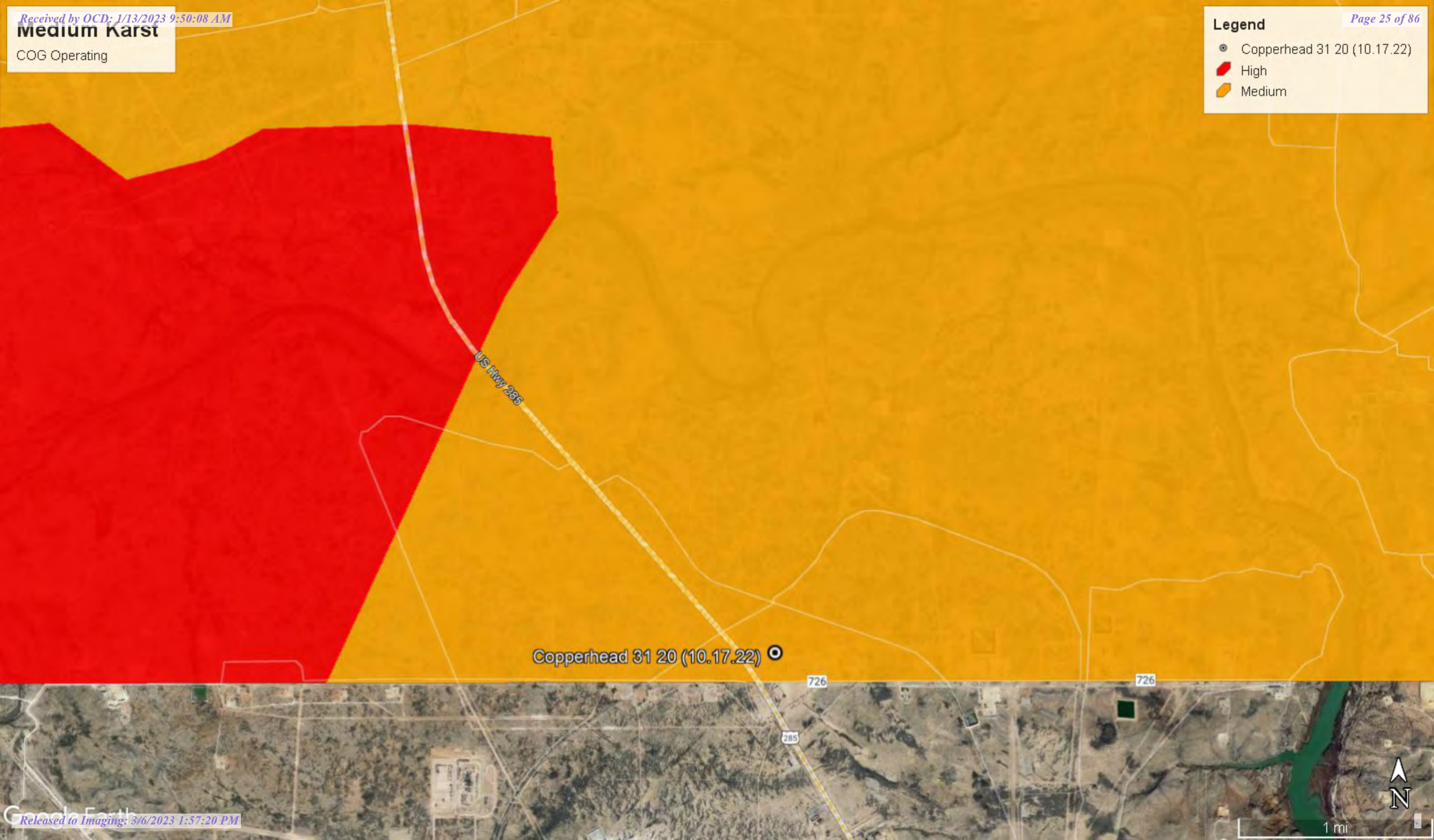


Medium Karst

COG Operating

Legend

- Copperhead 31 20 (10.17.22)
- High
- Medium



Copperhead 31 20 (10.17.22) ●

726

726

285



1 mi



New Mexico Office of the State Engineer

Water Column/Average Depth to Water

(A CLW##### in the POD suffix indicates the POD has been replaced & no longer serves a water right file.)

(R=POD has been replaced,
O=orphaned,
C=the file is closed)

(quarters are 1=NW 2=NE 3=SW 4=SE)

(quarters are smallest to largest)

(NAD83 UTM in meters)

(In feet)

POD Number	POD Sub-Code	basin	County	Q 64	Q 16	Q 4	Sec	Tws	Rng	X	Y	Distance	Depth Well	Depth Water	Water Column
C 04022 POD2	CUB	ED		2	2	2	27	26S	28E	588106	3543082	4059	250	145	105
C 03605 POD1	CUB	ED		4	2	3	27	26S	29E	596990	3541983	5412	45	0	45
C 02160	CUB	ED		4	1	2	14	26S	28E	589243	3546044*	5496	300	120	180
C 04630 POD1	CUB	ED		3	4	3	22	26S	29E	596792	3543275	5582			
C 02160 S6	CUB	ED		3	3	1	14	26S	28E	588232	3545635*	5677	300	120	180
C 01668	CUB	ED			3	3	12	26S	28E	589957	3546554*	5708	250	100	150
C 02160 S	CUB	ED		1	1	2	14	26S	28E	589043	3546244*	5765	300	120	180
C 02160 S2	CUB	ED		1	1	2	14	26S	28E	589043	3546244*	5765	300	120	180
C 02160 S8	CUB	ED		2	3	3	12	26S	28E	590056	3546653*	5775	200	120	80
C 04022 POD1	CUB	ED		4	4	2	15	26S	28E	588082	3545647	5778	220	175	45
C 02160 S7	CUB	ED		3	3	1	22	26S	28E	586638	3543998*	5788	300	120	180
C 02160 S3	CUB	ED		2	2	1	14	26S	28E	588834	3546241*	5859	300	120	180
C 02160 S4	CUB	ED		2	2	1	14	26S	28E	588834	3546241*	5859	300	120	180

Average Depth to Water: **115 feet**

Minimum Depth: **0 feet**

Maximum Depth: **175 feet**

Record Count: 13

UTMNA83 Radius Search (in meters):

Easting (X): 591649.67

Northing (Y): 3541101.92

Radius: 6000

*UTM location was derived from PLSS - see Help

The data is furnished by the NMOSE/ISC and is accepted by the recipient with the expressed understanding that the OSE/ISC make no warranties, expressed or implied, concerning the accuracy, completeness, reliability, usability, or suitability for any particular purpose of the data.

10/27/22 10:28 AM

Page 1 of 1

WATER COLUMN/ AVERAGE
DEPTH TO WATER



New Mexico Office of the State Engineer

Point of Diversion Summary

The data is furnished by the NMOSE/ISC and is accepted by the recipient with the expressed understanding that the OSE/ISC make no warranties, expressed or implied, concerning the accuracy, completeness, reliability, usability, or suitability for any particular purpose of the data.

10/27/22 10:28 AM

POINT OF DIVERSION SUMMARY



USGS Home
Contact USGS
Search USGS

National Water Information System: Web Interface

USGS Water Resources

Data Category: Groundwater Geographic Area: New Mexico GO

Click to hideNews Bulletins

- Effective October 24, 2022 hyperlinks to legacy Current Condition pages will automatically redirect users to the corresponding Monitoring Location page. Please see the [Water Data For The Nation Blog](#) for full details, including how to navigate back to the legacy Current Condition page, if desired.
- Explore the NEW [USGS National Water Dashboard](#) interactive map to access real-time water data from over 13,500 stations nationwide.
- [Full News](#)

Groundwater levels for New Mexico

Click to hide state-specific text

Important: [Next Generation Monitoring Location Page](#)

Search Results -- 1 sites found

Agency code = usgs
site_no list = 320145104041701

Minimum number of levels = 1
[Save file of selected sites](#) to local disk for future upload

USGS 320145104041701 26S.28E.22.234431

Eddy County, New Mexico
Latitude 32°01'45", Longitude 104°04'17" NAD27
Land-surface elevation 2,980 feet above NGVD29
The depth of the well is 23.00 feet below land surface.
This well is completed in the Other aquifers (N9999OTHER) national aquifer.
This well is completed in the Alluvium, Bolson Deposits and Other Surface Deposits (110AVMB) local aquifer.

Output formats

Table of data
Tab-separated data
Graph of data
Reselect period

Date	Time	? Water-level date-time accuracy	? Parameter code	Water level, feet below land surface	Water level, feet above specific vertical datum	Referenced vertical datum	? Status	? Method of measurement	? Measuring agency	? Source measu
1987-12-12			D 62610		2958.98	NGVD29	1		S	
1987-12-12			D 62611		2960.55	NAVD88	1		S	
1987-12-12			D 72019	21.02			1		S	
1998-01-22			D 62610		2957.65	NGVD29	1		S	
1998-01-22			D 62611		2959.22	NAVD88	1		S	
1998-01-22			D 72019	22.35			1		S	

Explanation

Section	Code	Description
Water-level date-time accuracy	D	Date is accurate to the Day
Parameter code	62610	Groundwater level above NGVD 1929, feet

Section	Code	Description
Parameter code	62611	Groundwater level above NAVD 1988, feet
Parameter code	72019	Depth to water level, feet below land surface
Referenced vertical datum	NAVD88	North American Vertical Datum of 1988
Referenced vertical datum	NGVD29	National Geodetic Vertical Datum of 1929
Status	1	Static
Method of measurement	S	Steel-tape measurement.
Measuring agency		Not determined
Source of measurement		Not determined
Water-level approval status	A	Approved for publication -- Processing and review completed.

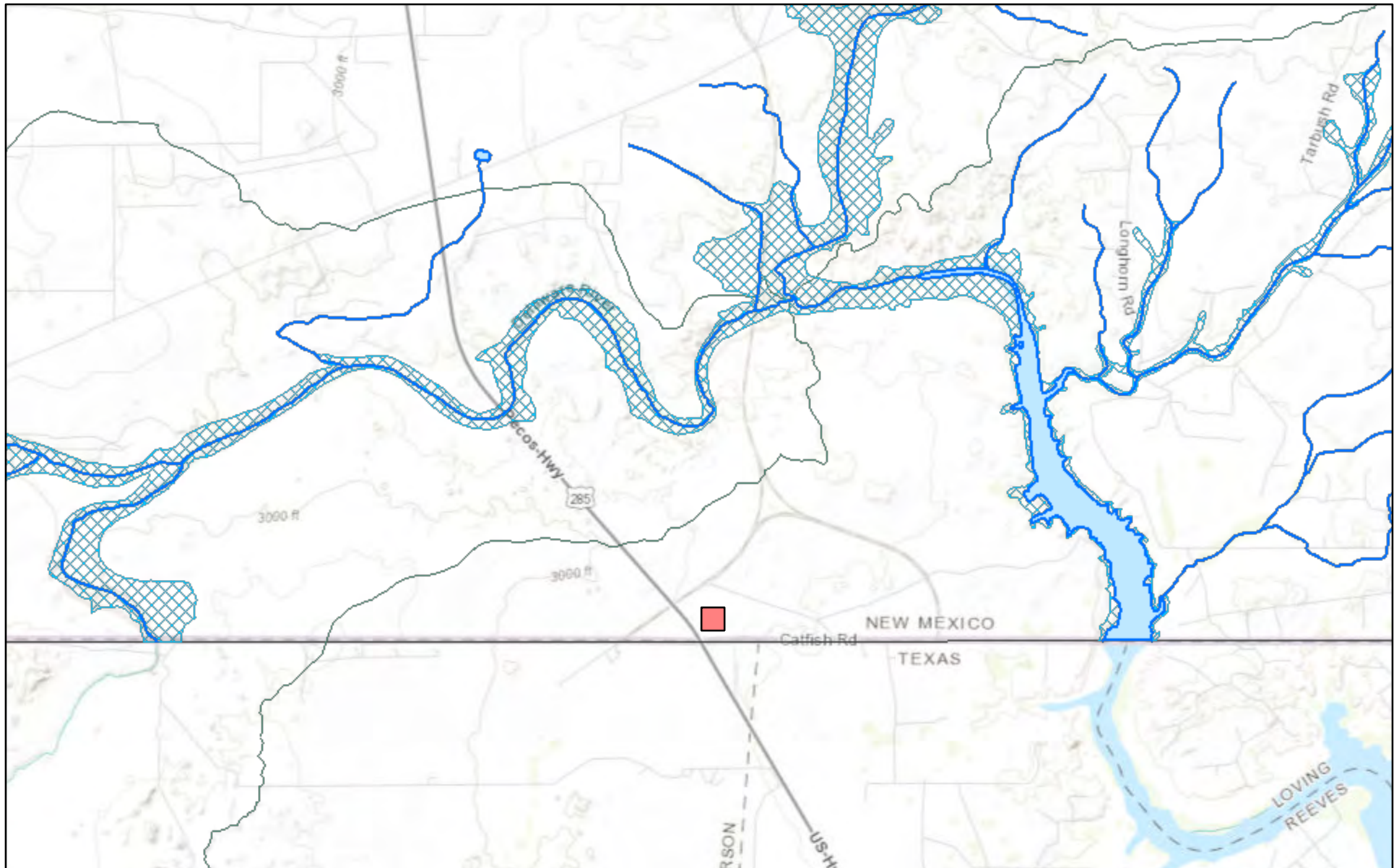
[Questions about sites/data?](#)
[Feedback on this web site](#)
[Automated retrievals](#)
[Help](#)
[Data Tips](#)
[Explanation of terms](#)
[Subscribe for system changes](#)
[News](#)

[Accessibility](#) [FOIA](#) [Privacy](#) [Policies and Notices](#)
[U.S. Department of the Interior](#) | [U.S. Geological Survey](#)
Title: Groundwater for New Mexico: Water Levels
URL: <https://nwis.waterdata.usgs.gov/nm/nwis/gwlevels?>

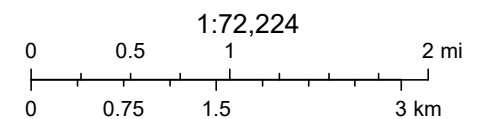


Page Contact Information: [New Mexico Water Data Maintainer](#)
Page Last Modified: 2022-10-27 12:33:04 EDT
0.28 0.24 nadww01

New Mexico NFHL Data



October 27, 2022



FEMA, Sources: Esri, HERE, Garmin, Intermap, increment P Corp., GEBCO, USGS, FAO, NPS, NRCAN, GeoBase, IGN, Kadaster NL, Ordnance Survey,

nmflood.org is made possible through a collaboration with NMDHSEM,

This is a non-regulatory product for informational use only. Please consult your local floodplain administrator for further information.

APPENDIX E

CARMONA RESOURCES





Environment Testing America

ANALYTICAL REPORT

Eurofins Midland
1211 W. Florida Ave
Midland, TX 79701
Tel: (432)704-5440

Laboratory Job ID: 880-20552-1

Laboratory Sample Delivery Group: Eddy County, New Mexico
Client Project/Site: Copperhead 31-20 (10.17.22)

For:

Carmona Resources
310 W Wall St
Ste 415
Midland, Texas 79701

Attn: Conner Moehring

A handwritten signature in black ink that reads "Jessica Kramer".

Authorized for release by:

10/24/2022 3:59:43 PM

Jessica Kramer, Project Manager
(432)704-5440

Jessica.Kramer@et.eurofinsus.com

LINKS

Review your project
results through



Have a Question?



Visit us at:

www.eurofinsus.com/Env

This report has been electronically signed and authorized by the signatory. Electronic signature is intended to be the legally binding equivalent of a traditionally handwritten signature.

Results relate only to the items tested and the sample(s) as received by the laboratory.

Client: Carmona Resources
Project/Site: Copperhead 31-20 (10.17.22)

Laboratory Job ID: 880-20552-1
SDG: Eddy County, New Mexico

Table of Contents

Cover Page	1
Table of Contents	2
Definitions/Glossary	3
Case Narrative	4
Client Sample Results	5
Surrogate Summary	15
QC Sample Results	17
QC Association Summary	24
Lab Chronicle	28
Certification Summary	32
Method Summary	33
Sample Summary	34
Chain of Custody	35
Receipt Checklists	37

1
2
3
4
5
6
7
8
9
10
11
12
13
14

Definitions/Glossary

Client: Carmona Resources
Project/Site: Copperhead 31-20 (10.17.22)

Job ID: 880-20552-1
SDG: Eddy County, New Mexico

Qualifiers

GC VOA

Qualifier	Qualifier Description
F1	MS and/or MSD recovery exceeds control limits.
F2	MS/MSD RPD exceeds control limits
U	Indicates the analyte was analyzed for but not detected.

GC Semi VOA

Qualifier	Qualifier Description
F1	MS and/or MSD recovery exceeds control limits.
U	Indicates the analyte was analyzed for but not detected.

HPLC/IC

Qualifier	Qualifier Description
U	Indicates the analyte was analyzed for but not detected.

Glossary

Abbreviation	These commonly used abbreviations may or may not be present in this report.
α	Listed under the "D" column to designate that the result is reported on a dry weight basis
%R	Percent Recovery
CFL	Contains Free Liquid
CFU	Colony Forming Unit
CNF	Contains No Free Liquid
DER	Duplicate Error Ratio (normalized absolute difference)
Dil Fac	Dilution Factor
DL	Detection Limit (DoD/DOE)
DL, RA, RE, IN	Indicates a Dilution, Re-analysis, Re-extraction, or additional Initial metals/anion analysis of the sample
DLC	Decision Level Concentration (Radiochemistry)
EDL	Estimated Detection Limit (Dioxin)
LOD	Limit of Detection (DoD/DOE)
LOQ	Limit of Quantitation (DoD/DOE)
MCL	EPA recommended "Maximum Contaminant Level"
MDA	Minimum Detectable Activity (Radiochemistry)
MDC	Minimum Detectable Concentration (Radiochemistry)
MDL	Method Detection Limit
ML	Minimum Level (Dioxin)
MPN	Most Probable Number
MQL	Method Quantitation Limit
NC	Not Calculated
ND	Not Detected at the reporting limit (or MDL or EDL if shown)
NEG	Negative / Absent
POS	Positive / Present
PQL	Practical Quantitation Limit
PRES	Presumptive
QC	Quality Control
RER	Relative Error Ratio (Radiochemistry)
RL	Reporting Limit or Requested Limit (Radiochemistry)
RPD	Relative Percent Difference, a measure of the relative difference between two points
TEF	Toxicity Equivalent Factor (Dioxin)
TEQ	Toxicity Equivalent Quotient (Dioxin)
TNTC	Too Numerous To Count

Case Narrative

Client: Carmona Resources
Project/Site: Copperhead 31-20 (10.17.22)

Job ID: 880-20552-1
SDG: Eddy County, New Mexico

Job ID: 880-20552-1**Laboratory: Eurofins Midland****Narrative****Job Narrative
880-20552-1****Receipt**

The samples were received on 10/20/2022 8:06 AM. Unless otherwise noted below, the samples arrived in good condition, and, where required, properly preserved and on ice. The temperature of the cooler at receipt time was 0.2°C

Receipt Exceptions

The following samples were received and analyzed from an unpreserved bulk soil jar: S-1 (0-3") (880-20552-1), S-1 (6") (880-20552-2), S-1 (12") (880-20552-3), S-2 (0-3") (880-20552-4), S-2 (6") (880-20552-5), S-2 (12") (880-20552-6), S-3 (0-3") (880-20552-7), S-3 (6") (880-20552-8), S-3 (12") (880-20552-9), H-1 (0-6") (880-20552-10), H-2 (0-6") (880-20552-11), H-3 (0-6") (880-20552-12) and H-4 (0-6") (880-20552-13).

GC VOA

Method 8021B: The matrix spike / matrix spike duplicate (MS/MSD) recoveries for preparation batch 880-37395 and analytical batch 880-37351 were outside control limits. Sample matrix interference and/or non-homogeneity are suspected because the associated laboratory control sample (LCS) recovery was within acceptance limits.

Method 8021B: The matrix spike / matrix spike duplicate (MS/MSD) recoveries for preparation batch 880-37393 and analytical batch 880-37450 were outside control limits. Sample matrix interference and/or non-homogeneity are suspected because the associated laboratory control sample (LCS) recovery was within acceptance limits.

No additional analytical or quality issues were noted, other than those described above or in the Definitions/ Glossary page.

GC Semi VOA

Method 8015MOD_NM: The matrix spike (MS) recoveries for preparation batch 880-37356 and analytical batch 880-37363 were outside control limits. Non-homogeneity is suspected because the associated laboratory control sample (LCS) recovery was within acceptance limits.

No additional analytical or quality issues were noted, other than those described above or in the Definitions/ Glossary page.

HPLC/IC

No additional analytical or quality issues were noted, other than those described above or in the Definitions/ Glossary page.

Client Sample Results

Client: Carmona Resources
Project/Site: Copperhead 31-20 (10.17.22)

Job ID: 880-20552-1
SDG: Eddy County, New Mexico

Client Sample ID: S-1 (0-3")

Lab Sample ID: 880-20552-1

Date Collected: 10/19/22 00:00

Matrix: Solid

Date Received: 10/20/22 08:06

Method: SW846 8021B - Volatile Organic Compounds (GC)

Analyte	Result	Qualifier	RL	MDL	Unit	D	Prepared	Analyzed	Dil Fac
Benzene	<0.00198	U F2 F1	0.00198		mg/Kg		10/20/22 10:33	10/21/22 22:26	1
Toluene	<0.00198	U F1	0.00198		mg/Kg		10/20/22 10:33	10/21/22 22:26	1
Ethylbenzene	<0.00198	U F1	0.00198		mg/Kg		10/20/22 10:33	10/21/22 22:26	1
m-Xylene & p-Xylene	<0.00397	U F1	0.00397		mg/Kg		10/20/22 10:33	10/21/22 22:26	1
o-Xylene	<0.00198	U F2 F1	0.00198		mg/Kg		10/20/22 10:33	10/21/22 22:26	1
Xylenes, Total	<0.00397	U F1	0.00397		mg/Kg		10/20/22 10:33	10/21/22 22:26	1

Surrogate	%Recovery	Qualifier	Limits	Prepared	Analyzed	Dil Fac
4-Bromofluorobenzene (Surr)	104		70 - 130	10/20/22 10:33	10/21/22 22:26	1
1,4-Difluorobenzene (Surr)	98		70 - 130	10/20/22 10:33	10/21/22 22:26	1

Method: TAL SOP Total BTEX - Total BTEX Calculation

Analyte	Result	Qualifier	RL	MDL	Unit	D	Prepared	Analyzed	Dil Fac
Total BTEX	<0.00397	U	0.00397		mg/Kg			10/24/22 16:16	1

Method: SW846 8015 NM - Diesel Range Organics (DRO) (GC)

Analyte	Result	Qualifier	RL	MDL	Unit	D	Prepared	Analyzed	Dil Fac
Total TPH	<49.8	U	49.8		mg/Kg			10/21/22 12:35	1

Method: SW846 8015B NM - Diesel Range Organics (DRO) (GC)

Analyte	Result	Qualifier	RL	MDL	Unit	D	Prepared	Analyzed	Dil Fac
Gasoline Range Organics (GRO)-C6-C10	<49.8	U	49.8		mg/Kg		10/20/22 08:22	10/20/22 12:06	1
Diesel Range Organics (Over C10-C28)	<49.8	U F1	49.8		mg/Kg		10/20/22 08:22	10/20/22 12:06	1
Oil Range Organics (Over C28-C36)	<49.8	U	49.8		mg/Kg		10/20/22 08:22	10/20/22 12:06	1

Surrogate	%Recovery	Qualifier	Limits	Prepared	Analyzed	Dil Fac
1-Chlorooctane	83		70 - 130	10/20/22 08:22	10/20/22 12:06	1
o-Terphenyl	90		70 - 130	10/20/22 08:22	10/20/22 12:06	1

Method: MCAWW 300.0 - Anions, Ion Chromatography - Soluble

Analyte	Result	Qualifier	RL	MDL	Unit	D	Prepared	Analyzed	Dil Fac
Chloride	731		49.9		mg/Kg			10/20/22 21:59	10

Client Sample ID: S-1 (6")

Lab Sample ID: 880-20552-2

Date Collected: 10/19/22 00:00

Matrix: Solid

Date Received: 10/20/22 08:06

Method: SW846 8021B - Volatile Organic Compounds (GC)

Analyte	Result	Qualifier	RL	MDL	Unit	D	Prepared	Analyzed	Dil Fac
Benzene	<0.00200	U	0.00200		mg/Kg		10/20/22 10:33	10/22/22 02:53	1
Toluene	<0.00200	U	0.00200		mg/Kg		10/20/22 10:33	10/22/22 02:53	1
Ethylbenzene	<0.00200	U	0.00200		mg/Kg		10/20/22 10:33	10/22/22 02:53	1
m-Xylene & p-Xylene	<0.00401	U	0.00401		mg/Kg		10/20/22 10:33	10/22/22 02:53	1
o-Xylene	<0.00200	U	0.00200		mg/Kg		10/20/22 10:33	10/22/22 02:53	1
Xylenes, Total	<0.00401	U	0.00401		mg/Kg		10/20/22 10:33	10/22/22 02:53	1

Surrogate	%Recovery	Qualifier	Limits	Prepared	Analyzed	Dil Fac
4-Bromofluorobenzene (Surr)	96		70 - 130	10/20/22 10:33	10/22/22 02:53	1
1,4-Difluorobenzene (Surr)	100		70 - 130	10/20/22 10:33	10/22/22 02:53	1

Eurofins Midland

Client Sample Results

Client: Carmona Resources
Project/Site: Copperhead 31-20 (10.17.22)

Job ID: 880-20552-1
SDG: Eddy County, New Mexico

Client Sample ID: S-1 (6")

Lab Sample ID: 880-20552-2

Date Collected: 10/19/22 00:00

Matrix: Solid

Date Received: 10/20/22 08:06

Method: TAL SOP Total BTEX - Total BTEX Calculation

Analyte	Result	Qualifier	RL	MDL	Unit	D	Prepared	Analyzed	Dil Fac
Total BTEX	<0.00401	U	0.00401		mg/Kg			10/24/22 16:16	1

Method: SW846 8015 NM - Diesel Range Organics (DRO) (GC)

Analyte	Result	Qualifier	RL	MDL	Unit	D	Prepared	Analyzed	Dil Fac
Total TPH	<49.9	U	49.9		mg/Kg			10/21/22 12:35	1

Method: SW846 8015B NM - Diesel Range Organics (DRO) (GC)

Analyte	Result	Qualifier	RL	MDL	Unit	D	Prepared	Analyzed	Dil Fac
Gasoline Range Organics (GRO)-C6-C10	<49.9	U	49.9		mg/Kg		10/20/22 08:22	10/20/22 13:09	1
Diesel Range Organics (Over C10-C28)	<49.9	U	49.9		mg/Kg		10/20/22 08:22	10/20/22 13:09	1
Oil Range Organics (Over C28-C36)	<49.9	U	49.9		mg/Kg		10/20/22 08:22	10/20/22 13:09	1
Surrogate	%Recovery	Qualifier	Limits				Prepared	Analyzed	Dil Fac
1-Chlorooctane	85		70 - 130				10/20/22 08:22	10/20/22 13:09	1
o-Terphenyl	94		70 - 130				10/20/22 08:22	10/20/22 13:09	1

Method: MCAWW 300.0 - Anions, Ion Chromatography - Soluble

Analyte	Result	Qualifier	RL	MDL	Unit	D	Prepared	Analyzed	Dil Fac
Chloride	540		49.5		mg/Kg			10/20/22 22:13	10

Client Sample ID: S-1 (12")

Lab Sample ID: 880-20552-3

Date Collected: 10/19/22 00:00

Matrix: Solid

Date Received: 10/20/22 08:06

Method: SW846 8021B - Volatile Organic Compounds (GC)

Analyte	Result	Qualifier	RL	MDL	Unit	D	Prepared	Analyzed	Dil Fac
Benzene	<0.00200	U	0.00200		mg/Kg		10/20/22 10:33	10/22/22 03:13	1
Toluene	<0.00200	U	0.00200		mg/Kg		10/20/22 10:33	10/22/22 03:13	1
Ethylbenzene	<0.00200	U	0.00200		mg/Kg		10/20/22 10:33	10/22/22 03:13	1
m-Xylene & p-Xylene	<0.00399	U	0.00399		mg/Kg		10/20/22 10:33	10/22/22 03:13	1
o-Xylene	<0.00200	U	0.00200		mg/Kg		10/20/22 10:33	10/22/22 03:13	1
Xylenes, Total	<0.00399	U	0.00399		mg/Kg		10/20/22 10:33	10/22/22 03:13	1
Surrogate	%Recovery	Qualifier	Limits				Prepared	Analyzed	Dil Fac
4-Bromofluorobenzene (Surr)	118		70 - 130				10/20/22 10:33	10/22/22 03:13	1
1,4-Difluorobenzene (Surr)	87		70 - 130				10/20/22 10:33	10/22/22 03:13	1

Method: TAL SOP Total BTEX - Total BTEX Calculation

Analyte	Result	Qualifier	RL	MDL	Unit	D	Prepared	Analyzed	Dil Fac
Total BTEX	<0.00399	U	0.00399		mg/Kg			10/24/22 16:16	1

Method: SW846 8015 NM - Diesel Range Organics (DRO) (GC)

Analyte	Result	Qualifier	RL	MDL	Unit	D	Prepared	Analyzed	Dil Fac
Total TPH	<49.8	U	49.8		mg/Kg			10/21/22 12:35	1

Method: SW846 8015B NM - Diesel Range Organics (DRO) (GC)

Analyte	Result	Qualifier	RL	MDL	Unit	D	Prepared	Analyzed	Dil Fac
Gasoline Range Organics (GRO)-C6-C10	<49.8	U	49.8		mg/Kg		10/20/22 08:22	10/20/22 13:30	1
Diesel Range Organics (Over C10-C28)	<49.8	U	49.8		mg/Kg		10/20/22 08:22	10/20/22 13:30	1

Eurofins Midland

Client Sample Results

Client: Carmona Resources
Project/Site: Copperhead 31-20 (10.17.22)

Job ID: 880-20552-1
SDG: Eddy County, New Mexico

Client Sample ID: S-1 (12")

Lab Sample ID: 880-20552-3

Date Collected: 10/19/22 00:00

Matrix: Solid

Date Received: 10/20/22 08:06

Method: SW846 8015B NM - Diesel Range Organics (DRO) (GC) (Continued)

Analyte	Result	Qualifier	RL	MDL	Unit	D	Prepared	Analyzed	Dil Fac
Oil Range Organics (Over C28-C36)	<49.8	U	49.8		mg/Kg		10/20/22 08:22	10/20/22 13:30	1
Surrogate	%Recovery	Qualifier	Limits				Prepared	Analyzed	Dil Fac
1-Chlorooctane	83		70 - 130				10/20/22 08:22	10/20/22 13:30	1
o-Terphenyl	92		70 - 130				10/20/22 08:22	10/20/22 13:30	1

Method: MCAWW 300.0 - Anions, Ion Chromatography - Soluble

Analyte	Result	Qualifier	RL	MDL	Unit	D	Prepared	Analyzed	Dil Fac
Chloride	581		24.9		mg/Kg			10/20/22 22:18	5

Client Sample ID: S-2 (0-3")

Lab Sample ID: 880-20552-4

Date Collected: 10/19/22 00:00

Matrix: Solid

Date Received: 10/20/22 08:06

Method: SW846 8021B - Volatile Organic Compounds (GC)

Analyte	Result	Qualifier	RL	MDL	Unit	D	Prepared	Analyzed	Dil Fac
Benzene	<0.00200	U	0.00200		mg/Kg		10/20/22 10:33	10/22/22 03:34	1
Toluene	<0.00200	U	0.00200		mg/Kg		10/20/22 10:33	10/22/22 03:34	1
Ethylbenzene	<0.00200	U	0.00200		mg/Kg		10/20/22 10:33	10/22/22 03:34	1
m-Xylene & p-Xylene	<0.00400	U	0.00400		mg/Kg		10/20/22 10:33	10/22/22 03:34	1
o-Xylene	<0.00200	U	0.00200		mg/Kg		10/20/22 10:33	10/22/22 03:34	1
Xylenes, Total	<0.00400	U	0.00400		mg/Kg		10/20/22 10:33	10/22/22 03:34	1
Surrogate	%Recovery	Qualifier	Limits				Prepared	Analyzed	Dil Fac
4-Bromofluorobenzene (Surr)	121		70 - 130				10/20/22 10:33	10/22/22 03:34	1
1,4-Difluorobenzene (Surr)	84		70 - 130				10/20/22 10:33	10/22/22 03:34	1

Method: TAL SOP Total BTEX - Total BTEX Calculation

Analyte	Result	Qualifier	RL	MDL	Unit	D	Prepared	Analyzed	Dil Fac
Total BTEX	<0.00400	U	0.00400		mg/Kg			10/24/22 16:16	1

Method: SW846 8015 NM - Diesel Range Organics (DRO) (GC)

Analyte	Result	Qualifier	RL	MDL	Unit	D	Prepared	Analyzed	Dil Fac
Total TPH	79.5		49.9		mg/Kg			10/21/22 12:35	1

Method: SW846 8015B NM - Diesel Range Organics (DRO) (GC)

Analyte	Result	Qualifier	RL	MDL	Unit	D	Prepared	Analyzed	Dil Fac
Gasoline Range Organics (GRO)-C6-C10	<49.9	U	49.9		mg/Kg		10/20/22 08:22	10/20/22 13:51	1
Diesel Range Organics (Over C10-C28)	<49.9	U	49.9		mg/Kg		10/20/22 08:22	10/20/22 13:51	1
Oil Range Organics (Over C28-C36)	79.5		49.9		mg/Kg		10/20/22 08:22	10/20/22 13:51	1
Surrogate	%Recovery	Qualifier	Limits				Prepared	Analyzed	Dil Fac
1-Chlorooctane	90		70 - 130				10/20/22 08:22	10/20/22 13:51	1
o-Terphenyl	96		70 - 130				10/20/22 08:22	10/20/22 13:51	1

Method: MCAWW 300.0 - Anions, Ion Chromatography - Soluble

Analyte	Result	Qualifier	RL	MDL	Unit	D	Prepared	Analyzed	Dil Fac
Chloride	31.4		5.01		mg/Kg			10/20/22 22:23	1

Eurofins Midland

Client Sample Results

Client: Carmona Resources
Project/Site: Copperhead 31-20 (10.17.22)

Job ID: 880-20552-1
SDG: Eddy County, New Mexico

Client Sample ID: S-2 (6")

Lab Sample ID: 880-20552-5

Date Collected: 10/19/22 00:00

Matrix: Solid

Date Received: 10/20/22 08:06

Method: SW846 8021B - Volatile Organic Compounds (GC)

Analyte	Result	Qualifier	RL	MDL	Unit	D	Prepared	Analyzed	Dil Fac
Benzene	<0.00198	U	0.00198		mg/Kg		10/20/22 10:33	10/22/22 03:54	1
Toluene	<0.00198	U	0.00198		mg/Kg		10/20/22 10:33	10/22/22 03:54	1
Ethylbenzene	<0.00198	U	0.00198		mg/Kg		10/20/22 10:33	10/22/22 03:54	1
m-Xylene & p-Xylene	<0.00397	U	0.00397		mg/Kg		10/20/22 10:33	10/22/22 03:54	1
o-Xylene	<0.00198	U	0.00198		mg/Kg		10/20/22 10:33	10/22/22 03:54	1
Xylenes, Total	<0.00397	U	0.00397		mg/Kg		10/20/22 10:33	10/22/22 03:54	1

Surrogate	%Recovery	Qualifier	Limits	Prepared	Analyzed	Dil Fac
4-Bromofluorobenzene (Surr)	101		70 - 130	10/20/22 10:33	10/22/22 03:54	1
1,4-Difluorobenzene (Surr)	104		70 - 130	10/20/22 10:33	10/22/22 03:54	1

Method: TAL SOP Total BTEX - Total BTEX Calculation

Analyte	Result	Qualifier	RL	MDL	Unit	D	Prepared	Analyzed	Dil Fac
Total BTEX	<0.00397	U	0.00397		mg/Kg			10/24/22 16:16	1

Method: SW846 8015 NM - Diesel Range Organics (DRO) (GC)

Analyte	Result	Qualifier	RL	MDL	Unit	D	Prepared	Analyzed	Dil Fac
Total TPH	<49.9	U	49.9		mg/Kg			10/21/22 12:35	1

Method: SW846 8015B NM - Diesel Range Organics (DRO) (GC)

Analyte	Result	Qualifier	RL	MDL	Unit	D	Prepared	Analyzed	Dil Fac
Gasoline Range Organics (GRO)-C6-C10	<49.9	U	49.9		mg/Kg		10/20/22 08:22	10/20/22 14:12	1
Diesel Range Organics (Over C10-C28)	<49.9	U	49.9		mg/Kg		10/20/22 08:22	10/20/22 14:12	1
Oil Range Organics (Over C28-C36)	<49.9	U	49.9		mg/Kg		10/20/22 08:22	10/20/22 14:12	1

Surrogate	%Recovery	Qualifier	Limits	Prepared	Analyzed	Dil Fac
1-Chlorooctane	99		70 - 130	10/20/22 08:22	10/20/22 14:12	1
o-Terphenyl	108		70 - 130	10/20/22 08:22	10/20/22 14:12	1

Method: MCAWW 300.0 - Anions, Ion Chromatography - Soluble

Analyte	Result	Qualifier	RL	MDL	Unit	D	Prepared	Analyzed	Dil Fac
Chloride	73.1		5.04		mg/Kg			10/20/22 22:28	1

Client Sample ID: S-2 (12")

Lab Sample ID: 880-20552-6

Date Collected: 10/19/22 00:00

Matrix: Solid

Date Received: 10/20/22 08:06

Method: SW846 8021B - Volatile Organic Compounds (GC)

Analyte	Result	Qualifier	RL	MDL	Unit	D	Prepared	Analyzed	Dil Fac
Benzene	<0.00198	U	0.00198		mg/Kg		10/20/22 10:33	10/22/22 04:15	1
Toluene	<0.00198	U	0.00198		mg/Kg		10/20/22 10:33	10/22/22 04:15	1
Ethylbenzene	<0.00198	U	0.00198		mg/Kg		10/20/22 10:33	10/22/22 04:15	1
m-Xylene & p-Xylene	<0.00396	U	0.00396		mg/Kg		10/20/22 10:33	10/22/22 04:15	1
o-Xylene	<0.00198	U	0.00198		mg/Kg		10/20/22 10:33	10/22/22 04:15	1
Xylenes, Total	<0.00396	U	0.00396		mg/Kg		10/20/22 10:33	10/22/22 04:15	1

Surrogate	%Recovery	Qualifier	Limits	Prepared	Analyzed	Dil Fac
4-Bromofluorobenzene (Surr)	123		70 - 130	10/20/22 10:33	10/22/22 04:15	1
1,4-Difluorobenzene (Surr)	88		70 - 130	10/20/22 10:33	10/22/22 04:15	1

Eurofins Midland

Client Sample Results

Client: Carmona Resources
Project/Site: Copperhead 31-20 (10.17.22)

Job ID: 880-20552-1
SDG: Eddy County, New Mexico

Client Sample ID: S-2 (12")

Lab Sample ID: 880-20552-6

Date Collected: 10/19/22 00:00

Matrix: Solid

Date Received: 10/20/22 08:06

Method: TAL SOP Total BTEX - Total BTEX Calculation

Analyte	Result	Qualifier	RL	MDL	Unit	D	Prepared	Analyzed	Dil Fac
Total BTEX	<0.00396	U	0.00396		mg/Kg			10/24/22 16:16	1

Method: SW846 8015 NM - Diesel Range Organics (DRO) (GC)

Analyte	Result	Qualifier	RL	MDL	Unit	D	Prepared	Analyzed	Dil Fac
Total TPH	<49.9	U	49.9		mg/Kg			10/21/22 12:35	1

Method: SW846 8015B NM - Diesel Range Organics (DRO) (GC)

Analyte	Result	Qualifier	RL	MDL	Unit	D	Prepared	Analyzed	Dil Fac
Gasoline Range Organics (GRO)-C6-C10	<49.9	U	49.9		mg/Kg		10/20/22 08:22	10/20/22 14:33	1
Diesel Range Organics (Over C10-C28)	<49.9	U	49.9		mg/Kg		10/20/22 08:22	10/20/22 14:33	1
Oil Range Organics (Over C28-C36)	<49.9	U	49.9		mg/Kg		10/20/22 08:22	10/20/22 14:33	1
Surrogate	%Recovery	Qualifier	Limits				Prepared	Analyzed	Dil Fac
1-Chlorooctane	95		70 - 130				10/20/22 08:22	10/20/22 14:33	1
o-Terphenyl	103		70 - 130				10/20/22 08:22	10/20/22 14:33	1

Method: MCAWW 300.0 - Anions, Ion Chromatography - Soluble

Analyte	Result	Qualifier	RL	MDL	Unit	D	Prepared	Analyzed	Dil Fac
Chloride	142		5.03		mg/Kg			10/20/22 22:43	1

Client Sample ID: S-3 (0-3")

Lab Sample ID: 880-20552-7

Date Collected: 10/19/22 00:00

Matrix: Solid

Date Received: 10/20/22 08:06

Method: SW846 8021B - Volatile Organic Compounds (GC)

Analyte	Result	Qualifier	RL	MDL	Unit	D	Prepared	Analyzed	Dil Fac
Benzene	<0.00200	U	0.00200		mg/Kg		10/20/22 10:33	10/22/22 04:35	1
Toluene	<0.00200	U	0.00200		mg/Kg		10/20/22 10:33	10/22/22 04:35	1
Ethylbenzene	<0.00200	U	0.00200		mg/Kg		10/20/22 10:33	10/22/22 04:35	1
m-Xylene & p-Xylene	<0.00401	U	0.00401		mg/Kg		10/20/22 10:33	10/22/22 04:35	1
o-Xylene	<0.00200	U	0.00200		mg/Kg		10/20/22 10:33	10/22/22 04:35	1
Xylenes, Total	<0.00401	U	0.00401		mg/Kg		10/20/22 10:33	10/22/22 04:35	1
Surrogate	%Recovery	Qualifier	Limits				Prepared	Analyzed	Dil Fac
4-Bromofluorobenzene (Surr)	112		70 - 130				10/20/22 10:33	10/22/22 04:35	1
1,4-Difluorobenzene (Surr)	113		70 - 130				10/20/22 10:33	10/22/22 04:35	1

Method: TAL SOP Total BTEX - Total BTEX Calculation

Analyte	Result	Qualifier	RL	MDL	Unit	D	Prepared	Analyzed	Dil Fac
Total BTEX	<0.00401	U	0.00401		mg/Kg			10/24/22 16:16	1

Method: SW846 8015 NM - Diesel Range Organics (DRO) (GC)

Analyte	Result	Qualifier	RL	MDL	Unit	D	Prepared	Analyzed	Dil Fac
Total TPH	3510		50.0		mg/Kg			10/21/22 12:35	1

Method: SW846 8015B NM - Diesel Range Organics (DRO) (GC)

Analyte	Result	Qualifier	RL	MDL	Unit	D	Prepared	Analyzed	Dil Fac
Gasoline Range Organics (GRO)-C6-C10	<50.0	U	50.0		mg/Kg		10/20/22 08:22	10/20/22 14:54	1
Diesel Range Organics (Over C10-C28)	1580		50.0		mg/Kg		10/20/22 08:22	10/20/22 14:54	1

Eurofins Midland

Client Sample Results

Client: Carmona Resources
Project/Site: Copperhead 31-20 (10.17.22)

Job ID: 880-20552-1
SDG: Eddy County, New Mexico

Client Sample ID: S-3 (0-3")

Lab Sample ID: 880-20552-7

Date Collected: 10/19/22 00:00

Matrix: Solid

Date Received: 10/20/22 08:06

Method: SW846 8015B NM - Diesel Range Organics (DRO) (GC) (Continued)

Analyte	Result	Qualifier	RL	MDL	Unit	D	Prepared	Analyzed	Dil Fac
Oil Range Organics (Over C28-C36)	1930		50.0		mg/Kg		10/20/22 08:22	10/20/22 14:54	1
Surrogate	%Recovery	Qualifier	Limits				Prepared	Analyzed	Dil Fac
1-Chlorooctane	93		70 - 130				10/20/22 08:22	10/20/22 14:54	1
o-Terphenyl	104		70 - 130				10/20/22 08:22	10/20/22 14:54	1

Method: MCAWW 300.0 - Anions, Ion Chromatography - Soluble

Analyte	Result	Qualifier	RL	MDL	Unit	D	Prepared	Analyzed	Dil Fac
Chloride	15.8		5.05		mg/Kg			10/20/22 22:47	1

Client Sample ID: S-3 (6")

Lab Sample ID: 880-20552-8

Date Collected: 10/19/22 00:00

Matrix: Solid

Date Received: 10/20/22 08:06

Method: SW846 8021B - Volatile Organic Compounds (GC)

Analyte	Result	Qualifier	RL	MDL	Unit	D	Prepared	Analyzed	Dil Fac
Benzene	<0.00202	U	0.00202		mg/Kg		10/20/22 10:51	10/21/22 04:30	1
Toluene	<0.00202	U	0.00202		mg/Kg		10/20/22 10:51	10/21/22 04:30	1
Ethylbenzene	<0.00202	U	0.00202		mg/Kg		10/20/22 10:51	10/21/22 04:30	1
m-Xylene & p-Xylene	<0.00403	U	0.00403		mg/Kg		10/20/22 10:51	10/21/22 04:30	1
o-Xylene	<0.00202	U	0.00202		mg/Kg		10/20/22 10:51	10/21/22 04:30	1
Xylenes, Total	<0.00403	U	0.00403		mg/Kg		10/20/22 10:51	10/21/22 04:30	1
Surrogate	%Recovery	Qualifier	Limits				Prepared	Analyzed	Dil Fac
4-Bromofluorobenzene (Surr)	113		70 - 130				10/20/22 10:51	10/21/22 04:30	1
1,4-Difluorobenzene (Surr)	100		70 - 130				10/20/22 10:51	10/21/22 04:30	1

Method: TAL SOP Total BTEX - Total BTEX Calculation

Analyte	Result	Qualifier	RL	MDL	Unit	D	Prepared	Analyzed	Dil Fac
Total BTEX	<0.00403	U	0.00403		mg/Kg			10/21/22 13:44	1

Method: SW846 8015 NM - Diesel Range Organics (DRO) (GC)

Analyte	Result	Qualifier	RL	MDL	Unit	D	Prepared	Analyzed	Dil Fac
Total TPH	<50.0	U	50.0		mg/Kg			10/21/22 12:35	1

Method: SW846 8015B NM - Diesel Range Organics (DRO) (GC)

Analyte	Result	Qualifier	RL	MDL	Unit	D	Prepared	Analyzed	Dil Fac
Gasoline Range Organics (GRO)-C6-C10	<50.0	U	50.0		mg/Kg		10/20/22 08:22	10/20/22 15:15	1
Diesel Range Organics (Over C10-C28)	<50.0	U	50.0		mg/Kg		10/20/22 08:22	10/20/22 15:15	1
Oil Range Organics (Over C28-C36)	<50.0	U	50.0		mg/Kg		10/20/22 08:22	10/20/22 15:15	1
Surrogate	%Recovery	Qualifier	Limits				Prepared	Analyzed	Dil Fac
1-Chlorooctane	86		70 - 130				10/20/22 08:22	10/20/22 15:15	1
o-Terphenyl	96		70 - 130				10/20/22 08:22	10/20/22 15:15	1

Method: MCAWW 300.0 - Anions, Ion Chromatography - Soluble

Analyte	Result	Qualifier	RL	MDL	Unit	D	Prepared	Analyzed	Dil Fac
Chloride	19.7		5.04		mg/Kg			10/20/22 22:52	1

Eurofins Midland

Client Sample Results

Client: Carmona Resources
Project/Site: Copperhead 31-20 (10.17.22)

Job ID: 880-20552-1
SDG: Eddy County, New Mexico

Client Sample ID: S-3 (12")

Lab Sample ID: 880-20552-9

Date Collected: 10/19/22 00:00

Matrix: Solid

Date Received: 10/20/22 08:06

Method: SW846 8021B - Volatile Organic Compounds (GC)

Analyte	Result	Qualifier	RL	MDL	Unit	D	Prepared	Analyzed	Dil Fac
Benzene	<0.00198	U	0.00198		mg/Kg		10/20/22 10:51	10/21/22 04:50	1
Toluene	<0.00198	U	0.00198		mg/Kg		10/20/22 10:51	10/21/22 04:50	1
Ethylbenzene	<0.00198	U	0.00198		mg/Kg		10/20/22 10:51	10/21/22 04:50	1
m-Xylene & p-Xylene	<0.00397	U	0.00397		mg/Kg		10/20/22 10:51	10/21/22 04:50	1
o-Xylene	<0.00198	U	0.00198		mg/Kg		10/20/22 10:51	10/21/22 04:50	1
Xylenes, Total	<0.00397	U	0.00397		mg/Kg		10/20/22 10:51	10/21/22 04:50	1

Surrogate	%Recovery	Qualifier	Limits	Prepared	Analyzed	Dil Fac
4-Bromofluorobenzene (Surr)	112		70 - 130	10/20/22 10:51	10/21/22 04:50	1
1,4-Difluorobenzene (Surr)	96		70 - 130	10/20/22 10:51	10/21/22 04:50	1

Method: TAL SOP Total BTEX - Total BTEX Calculation

Analyte	Result	Qualifier	RL	MDL	Unit	D	Prepared	Analyzed	Dil Fac
Total BTEX	<0.00397	U	0.00397		mg/Kg			10/21/22 13:44	1

Method: SW846 8015 NM - Diesel Range Organics (DRO) (GC)

Analyte	Result	Qualifier	RL	MDL	Unit	D	Prepared	Analyzed	Dil Fac
Total TPH	<49.8	U	49.8		mg/Kg			10/21/22 12:35	1

Method: SW846 8015B NM - Diesel Range Organics (DRO) (GC)

Analyte	Result	Qualifier	RL	MDL	Unit	D	Prepared	Analyzed	Dil Fac
Gasoline Range Organics (GRO)-C6-C10	<49.8	U	49.8		mg/Kg		10/20/22 08:22	10/20/22 15:36	1
Diesel Range Organics (Over C10-C28)	<49.8	U	49.8		mg/Kg		10/20/22 08:22	10/20/22 15:36	1
Oil Range Organics (Over C28-C36)	<49.8	U	49.8		mg/Kg		10/20/22 08:22	10/20/22 15:36	1

Surrogate	%Recovery	Qualifier	Limits	Prepared	Analyzed	Dil Fac
1-Chlorooctane	85		70 - 130	10/20/22 08:22	10/20/22 15:36	1
o-Terphenyl	93		70 - 130	10/20/22 08:22	10/20/22 15:36	1

Method: MCAWW 300.0 - Anions, Ion Chromatography - Soluble

Analyte	Result	Qualifier	RL	MDL	Unit	D	Prepared	Analyzed	Dil Fac
Chloride	38.3		5.02		mg/Kg			10/20/22 22:57	1

Client Sample ID: H-1 (0-6")

Lab Sample ID: 880-20552-10

Date Collected: 10/19/22 00:00

Matrix: Solid

Date Received: 10/20/22 08:06

Method: SW846 8021B - Volatile Organic Compounds (GC)

Analyte	Result	Qualifier	RL	MDL	Unit	D	Prepared	Analyzed	Dil Fac
Benzene	<0.00199	U	0.00199		mg/Kg		10/20/22 10:51	10/21/22 05:11	1
Toluene	<0.00199	U	0.00199		mg/Kg		10/20/22 10:51	10/21/22 05:11	1
Ethylbenzene	<0.00199	U	0.00199		mg/Kg		10/20/22 10:51	10/21/22 05:11	1
m-Xylene & p-Xylene	<0.00398	U	0.00398		mg/Kg		10/20/22 10:51	10/21/22 05:11	1
o-Xylene	<0.00199	U	0.00199		mg/Kg		10/20/22 10:51	10/21/22 05:11	1
Xylenes, Total	<0.00398	U	0.00398		mg/Kg		10/20/22 10:51	10/21/22 05:11	1

Surrogate	%Recovery	Qualifier	Limits	Prepared	Analyzed	Dil Fac
4-Bromofluorobenzene (Surr)	110		70 - 130	10/20/22 10:51	10/21/22 05:11	1
1,4-Difluorobenzene (Surr)	97		70 - 130	10/20/22 10:51	10/21/22 05:11	1

Eurofins Midland

Client Sample Results

Client: Carmona Resources
Project/Site: Copperhead 31-20 (10.17.22)

Job ID: 880-20552-1
SDG: Eddy County, New Mexico

Client Sample ID: H-1 (0-6")

Lab Sample ID: 880-20552-10

Date Collected: 10/19/22 00:00

Matrix: Solid

Date Received: 10/20/22 08:06

Method: TAL SOP Total BTEX - Total BTEX Calculation

Analyte	Result	Qualifier	RL	MDL	Unit	D	Prepared	Analyzed	Dil Fac
Total BTEX	<0.00398	U	0.00398		mg/Kg			10/21/22 13:44	1

Method: SW846 8015 NM - Diesel Range Organics (DRO) (GC)

Analyte	Result	Qualifier	RL	MDL	Unit	D	Prepared	Analyzed	Dil Fac
Total TPH	<49.8	U	49.8		mg/Kg			10/21/22 12:35	1

Method: SW846 8015B NM - Diesel Range Organics (DRO) (GC)

Analyte	Result	Qualifier	RL	MDL	Unit	D	Prepared	Analyzed	Dil Fac
Gasoline Range Organics (GRO)-C6-C10	<49.8	U	49.8		mg/Kg		10/20/22 08:22	10/20/22 15:57	1
Diesel Range Organics (Over C10-C28)	<49.8	U	49.8		mg/Kg		10/20/22 08:22	10/20/22 15:57	1
Oil Range Organics (Over C28-C36)	<49.8	U	49.8		mg/Kg		10/20/22 08:22	10/20/22 15:57	1
Surrogate	%Recovery	Qualifier	Limits				Prepared	Analyzed	Dil Fac
1-Chlorooctane	83		70 - 130				10/20/22 08:22	10/20/22 15:57	1
o-Terphenyl	90		70 - 130				10/20/22 08:22	10/20/22 15:57	1

Method: MCAWW 300.0 - Anions, Ion Chromatography - Soluble

Analyte	Result	Qualifier	RL	MDL	Unit	D	Prepared	Analyzed	Dil Fac
Chloride	21.7		4.99		mg/Kg			10/20/22 23:02	1

Client Sample ID: H-2 (0-6")

Lab Sample ID: 880-20552-11

Date Collected: 10/19/22 00:00

Matrix: Solid

Date Received: 10/20/22 08:06

Method: SW846 8021B - Volatile Organic Compounds (GC)

Analyte	Result	Qualifier	RL	MDL	Unit	D	Prepared	Analyzed	Dil Fac
Benzene	<0.00198	U	0.00198		mg/Kg		10/20/22 10:51	10/21/22 05:32	1
Toluene	<0.00198	U	0.00198		mg/Kg		10/20/22 10:51	10/21/22 05:32	1
Ethylbenzene	<0.00198	U	0.00198		mg/Kg		10/20/22 10:51	10/21/22 05:32	1
m-Xylene & p-Xylene	<0.00397	U	0.00397		mg/Kg		10/20/22 10:51	10/21/22 05:32	1
o-Xylene	<0.00198	U	0.00198		mg/Kg		10/20/22 10:51	10/21/22 05:32	1
Xylenes, Total	<0.00397	U	0.00397		mg/Kg		10/20/22 10:51	10/21/22 05:32	1
Surrogate	%Recovery	Qualifier	Limits				Prepared	Analyzed	Dil Fac
4-Bromofluorobenzene (Surr)	112		70 - 130				10/20/22 10:51	10/21/22 05:32	1
1,4-Difluorobenzene (Surr)	94		70 - 130				10/20/22 10:51	10/21/22 05:32	1

Method: TAL SOP Total BTEX - Total BTEX Calculation

Analyte	Result	Qualifier	RL	MDL	Unit	D	Prepared	Analyzed	Dil Fac
Total BTEX	<0.00397	U	0.00397		mg/Kg			10/21/22 13:44	1

Method: SW846 8015 NM - Diesel Range Organics (DRO) (GC)

Analyte	Result	Qualifier	RL	MDL	Unit	D	Prepared	Analyzed	Dil Fac
Total TPH	<50.0	U	50.0		mg/Kg			10/21/22 12:35	1

Method: SW846 8015B NM - Diesel Range Organics (DRO) (GC)

Analyte	Result	Qualifier	RL	MDL	Unit	D	Prepared	Analyzed	Dil Fac
Gasoline Range Organics (GRO)-C6-C10	<50.0	U	50.0		mg/Kg		10/20/22 08:22	10/20/22 16:45	1
Diesel Range Organics (Over C10-C28)	<50.0	U	50.0		mg/Kg		10/20/22 08:22	10/20/22 16:45	1

Eurofins Midland

Client Sample Results

Client: Carmona Resources
Project/Site: Copperhead 31-20 (10.17.22)

Job ID: 880-20552-1
SDG: Eddy County, New Mexico

Client Sample ID: H-2 (0-6")

Lab Sample ID: 880-20552-11

Date Collected: 10/19/22 00:00

Matrix: Solid

Date Received: 10/20/22 08:06

Method: SW846 8015B NM - Diesel Range Organics (DRO) (GC) (Continued)

Analyte	Result	Qualifier	RL	MDL	Unit	D	Prepared	Analyzed	Dil Fac
Oil Range Organics (Over C28-C36)	<50.0	U	50.0		mg/Kg		10/20/22 08:22	10/20/22 16:45	1
Surrogate	%Recovery	Qualifier	Limits				Prepared	Analyzed	Dil Fac
1-Chlorooctane	81		70 - 130				10/20/22 08:22	10/20/22 16:45	1
o-Terphenyl	89		70 - 130				10/20/22 08:22	10/20/22 16:45	1

Method: MCAWW 300.0 - Anions, Ion Chromatography - Soluble

Analyte	Result	Qualifier	RL	MDL	Unit	D	Prepared	Analyzed	Dil Fac
Chloride	25.3		4.97		mg/Kg			10/20/22 23:07	1

Client Sample ID: H-3 (0-6")

Lab Sample ID: 880-20552-12

Date Collected: 10/19/22 00:00

Matrix: Solid

Date Received: 10/20/22 08:06

Method: SW846 8021B - Volatile Organic Compounds (GC)

Analyte	Result	Qualifier	RL	MDL	Unit	D	Prepared	Analyzed	Dil Fac
Benzene	<0.00200	U	0.00200		mg/Kg		10/20/22 10:51	10/21/22 05:53	1
Toluene	<0.00200	U	0.00200		mg/Kg		10/20/22 10:51	10/21/22 05:53	1
Ethylbenzene	<0.00200	U	0.00200		mg/Kg		10/20/22 10:51	10/21/22 05:53	1
m-Xylene & p-Xylene	<0.00401	U	0.00401		mg/Kg		10/20/22 10:51	10/21/22 05:53	1
o-Xylene	<0.00200	U	0.00200		mg/Kg		10/20/22 10:51	10/21/22 05:53	1
Xylenes, Total	<0.00401	U	0.00401		mg/Kg		10/20/22 10:51	10/21/22 05:53	1
Surrogate	%Recovery	Qualifier	Limits				Prepared	Analyzed	Dil Fac
4-Bromofluorobenzene (Surr)	116		70 - 130				10/20/22 10:51	10/21/22 05:53	1
1,4-Difluorobenzene (Surr)	97		70 - 130				10/20/22 10:51	10/21/22 05:53	1

Method: TAL SOP Total BTEX - Total BTEX Calculation

Analyte	Result	Qualifier	RL	MDL	Unit	D	Prepared	Analyzed	Dil Fac
Total BTEX	<0.00401	U	0.00401		mg/Kg			10/21/22 13:44	1

Method: SW846 8015 NM - Diesel Range Organics (DRO) (GC)

Analyte	Result	Qualifier	RL	MDL	Unit	D	Prepared	Analyzed	Dil Fac
Total TPH	<49.9	U	49.9		mg/Kg			10/21/22 12:35	1

Method: SW846 8015B NM - Diesel Range Organics (DRO) (GC)

Analyte	Result	Qualifier	RL	MDL	Unit	D	Prepared	Analyzed	Dil Fac
Gasoline Range Organics (GRO)-C6-C10	<49.9	U	49.9		mg/Kg		10/20/22 08:22	10/20/22 17:05	1
Diesel Range Organics (Over C10-C28)	<49.9	U	49.9		mg/Kg		10/20/22 08:22	10/20/22 17:05	1
Oil Range Organics (Over C28-C36)	<49.9	U	49.9		mg/Kg		10/20/22 08:22	10/20/22 17:05	1
Surrogate	%Recovery	Qualifier	Limits				Prepared	Analyzed	Dil Fac
1-Chlorooctane	87		70 - 130				10/20/22 08:22	10/20/22 17:05	1
o-Terphenyl	97		70 - 130				10/20/22 08:22	10/20/22 17:05	1

Method: MCAWW 300.0 - Anions, Ion Chromatography - Soluble

Analyte	Result	Qualifier	RL	MDL	Unit	D	Prepared	Analyzed	Dil Fac
Chloride	13.6		4.96		mg/Kg			10/20/22 23:21	1

Eurofins Midland

Client Sample Results

Client: Carmona Resources
Project/Site: Copperhead 31-20 (10.17.22)

Job ID: 880-20552-1
SDG: Eddy County, New Mexico

Client Sample ID: H-4 (0-6")

Lab Sample ID: 880-20552-13

Date Collected: 10/19/22 00:00

Matrix: Solid

Date Received: 10/20/22 08:06

Method: SW846 8021B - Volatile Organic Compounds (GC)

Analyte	Result	Qualifier	RL	MDL	Unit	D	Prepared	Analyzed	Dil Fac
Benzene	<0.00202	U	0.00202		mg/Kg		10/20/22 10:51	10/21/22 06:13	1
Toluene	<0.00202	U	0.00202		mg/Kg		10/20/22 10:51	10/21/22 06:13	1
Ethylbenzene	<0.00202	U	0.00202		mg/Kg		10/20/22 10:51	10/21/22 06:13	1
m-Xylene & p-Xylene	<0.00403	U	0.00403		mg/Kg		10/20/22 10:51	10/21/22 06:13	1
o-Xylene	<0.00202	U	0.00202		mg/Kg		10/20/22 10:51	10/21/22 06:13	1
Xylenes, Total	<0.00403	U	0.00403		mg/Kg		10/20/22 10:51	10/21/22 06:13	1

Surrogate	%Recovery	Qualifier	Limits	Prepared	Analyzed	Dil Fac
4-Bromofluorobenzene (Surr)	109		70 - 130	10/20/22 10:51	10/21/22 06:13	1
1,4-Difluorobenzene (Surr)	93		70 - 130	10/20/22 10:51	10/21/22 06:13	1

Method: TAL SOP Total BTEX - Total BTEX Calculation

Analyte	Result	Qualifier	RL	MDL	Unit	D	Prepared	Analyzed	Dil Fac
Total BTEX	<0.00403	U	0.00403		mg/Kg			10/21/22 13:44	1

Method: SW846 8015 NM - Diesel Range Organics (DRO) (GC)

Analyte	Result	Qualifier	RL	MDL	Unit	D	Prepared	Analyzed	Dil Fac
Total TPH	<50.0	U	50.0		mg/Kg			10/21/22 12:35	1

Method: SW846 8015B NM - Diesel Range Organics (DRO) (GC)

Analyte	Result	Qualifier	RL	MDL	Unit	D	Prepared	Analyzed	Dil Fac
Gasoline Range Organics (GRO)-C6-C10	<50.0	U	50.0		mg/Kg		10/20/22 08:22	10/20/22 17:26	1
Diesel Range Organics (Over C10-C28)	<50.0	U	50.0		mg/Kg		10/20/22 08:22	10/20/22 17:26	1
Oil Range Organics (Over C28-C36)	<50.0	U	50.0		mg/Kg		10/20/22 08:22	10/20/22 17:26	1

Surrogate	%Recovery	Qualifier	Limits	Prepared	Analyzed	Dil Fac
1-Chlorooctane	89		70 - 130	10/20/22 08:22	10/20/22 17:26	1
o-Terphenyl	99		70 - 130	10/20/22 08:22	10/20/22 17:26	1

Method: MCAWW 300.0 - Anions, Ion Chromatography - Soluble

Analyte	Result	Qualifier	RL	MDL	Unit	D	Prepared	Analyzed	Dil Fac
Chloride	19.9		4.99		mg/Kg			10/20/22 23:26	1

Eurofins Midland

Surrogate Summary

Client: Carmona Resources
Project/Site: Copperhead 31-20 (10.17.22)

Job ID: 880-20552-1
SDG: Eddy County, New Mexico

Method: 8021B - Volatile Organic Compounds (GC)

Matrix: Solid

Prep Type: Total/NA

		Percent Surrogate Recovery (Acceptance Limits)					
Lab Sample ID	Client Sample ID	BFB1	DFBZ1				
		(70-130)	(70-130)				
880-20552-1	S-1 (0-3")	104	98				
880-20552-1 MS	S-1 (0-3")	101	111				
880-20552-1 MSD	S-1 (0-3")	85	92				
880-20552-2	S-1 (6")	96	100				
880-20552-3	S-1 (12")	118	87				
880-20552-4	S-2 (0-3")	121	84				
880-20552-5	S-2 (6")	101	104				
880-20552-6	S-2 (12")	123	88				
880-20552-7	S-3 (0-3")	112	113				
880-20552-8	S-3 (6")	113	100				
880-20552-9	S-3 (12")	112	96				
880-20552-10	H-1 (0-6")	110	97				
880-20552-11	H-2 (0-6")	112	94				
880-20552-12	H-3 (0-6")	116	97				
880-20552-13	H-4 (0-6")	109	93				
890-3227-A-1-B MS	Matrix Spike	98	91				
890-3227-A-1-C MSD	Matrix Spike Duplicate	94	89				
LCS 880-37393/1-A	Lab Control Sample	106	96				
LCS 880-37395/1-A	Lab Control Sample	89	89				
LCSD 880-37393/2-A	Lab Control Sample Dup	109	111				
LCSD 880-37395/2-A	Lab Control Sample Dup	89	89				
MB 880-37154/5-A	Method Blank	98	85				
MB 880-37160/5-A	Method Blank	84	94				
MB 880-37393/5-A	Method Blank	86	90				
MB 880-37395/5-A	Method Blank	101	89				
Surrogate Legend							
BFB = 4-Bromofluorobenzene (Surr)							
DFBZ = 1,4-Difluorobenzene (Surr)							

Method: 8015B NM - Diesel Range Organics (DRO) (GC)

Matrix: Solid

Prep Type: Total/NA

		Percent Surrogate Recovery (Acceptance Limits)					
Lab Sample ID	Client Sample ID	1CO1	OTPH1				
		(70-130)	(70-130)				
880-20552-1	S-1 (0-3")	83	90				
880-20552-1 MS	S-1 (0-3")	78	75				
880-20552-1 MSD	S-1 (0-3")	81	77				
880-20552-2	S-1 (6")	85	94				
880-20552-3	S-1 (12")	83	92				
880-20552-4	S-2 (0-3")	90	96				
880-20552-5	S-2 (6")	99	108				
880-20552-6	S-2 (12")	95	103				
880-20552-7	S-3 (0-3")	93	104				
880-20552-8	S-3 (6")	86	96				
880-20552-9	S-3 (12")	85	93				
880-20552-10	H-1 (0-6")	83	90				
880-20552-11	H-2 (0-6")	81	89				
880-20552-12	H-3 (0-6")	87	97				

Eurofins Midland

Surrogate Summary

Client: Carmona Resources

Project/Site: Copperhead 31-20 (10.17.22)

Job ID: 880-20552-1

SDG: Eddy County, New Mexico

Method: 8015B NM - Diesel Range Organics (DRO) (GC) (Continued)

Matrix: Solid

Prep Type: Total/NA

		Percent Surrogate Recovery (Acceptance Limits)	
Lab Sample ID	Client Sample ID	1CO1 (70-130)	OTPH1 (70-130)
880-20552-13	H-4 (0-6")	89	99
LCS 880-37356/2-A	Lab Control Sample	88	94
LCSD 880-37356/3-A	Lab Control Sample Dup	89	94
MB 880-37356/1-A	Method Blank	81	88
Surrogate Legend			
1CO = 1-Chlorooctane			
OTPH = o-Terphenyl			

QC Sample Results

Client: Carmona Resources
Project/Site: Copperhead 31-20 (10.17.22)

Job ID: 880-20552-1
SDG: Eddy County, New Mexico

Method: 8021B - Volatile Organic Compounds (GC)

Lab Sample ID: MB 880-37154/5-A

Matrix: Solid

Analysis Batch: 37351

Client Sample ID: Method Blank

Prep Type: Total/NA

Prep Batch: 37154

Analyte	MB Result	MB Qualifier	RL	MDL	Unit	D	Prepared	Analyzed	Dil Fac
Benzene	<0.00200	U	0.00200		mg/Kg		10/17/22 12:38	10/20/22 10:51	1
Toluene	<0.00200	U	0.00200		mg/Kg		10/17/22 12:38	10/20/22 10:51	1
Ethylbenzene	<0.00200	U	0.00200		mg/Kg		10/17/22 12:38	10/20/22 10:51	1
m-Xylene & p-Xylene	<0.00400	U	0.00400		mg/Kg		10/17/22 12:38	10/20/22 10:51	1
o-Xylene	<0.00200	U	0.00200		mg/Kg		10/17/22 12:38	10/20/22 10:51	1
Xylenes, Total	<0.00400	U	0.00400		mg/Kg		10/17/22 12:38	10/20/22 10:51	1

Surrogate	MB %Recovery	MB Qualifier	Limits	Prepared	Analyzed	Dil Fac
4-Bromofluorobenzene (Surr)	98		70 - 130	10/17/22 12:38	10/20/22 10:51	1
1,4-Difluorobenzene (Surr)	85		70 - 130	10/17/22 12:38	10/20/22 10:51	1

Lab Sample ID: MB 880-37160/5-A

Matrix: Solid

Analysis Batch: 37450

Client Sample ID: Method Blank

Prep Type: Total/NA

Prep Batch: 37160

Analyte	MB Result	MB Qualifier	RL	MDL	Unit	D	Prepared	Analyzed	Dil Fac
Benzene	<0.00200	U	0.00200		mg/Kg		10/17/22 13:35	10/21/22 11:02	1
Toluene	<0.00200	U	0.00200		mg/Kg		10/17/22 13:35	10/21/22 11:02	1
Ethylbenzene	<0.00200	U	0.00200		mg/Kg		10/17/22 13:35	10/21/22 11:02	1
m-Xylene & p-Xylene	<0.00400	U	0.00400		mg/Kg		10/17/22 13:35	10/21/22 11:02	1
o-Xylene	<0.00200	U	0.00200		mg/Kg		10/17/22 13:35	10/21/22 11:02	1
Xylenes, Total	<0.00400	U	0.00400		mg/Kg		10/17/22 13:35	10/21/22 11:02	1

Surrogate	MB %Recovery	MB Qualifier	Limits	Prepared	Analyzed	Dil Fac
4-Bromofluorobenzene (Surr)	84		70 - 130	10/17/22 13:35	10/21/22 11:02	1
1,4-Difluorobenzene (Surr)	94		70 - 130	10/17/22 13:35	10/21/22 11:02	1

Lab Sample ID: MB 880-37393/5-A

Matrix: Solid

Analysis Batch: 37450

Client Sample ID: Method Blank

Prep Type: Total/NA

Prep Batch: 37393

Analyte	MB Result	MB Qualifier	RL	MDL	Unit	D	Prepared	Analyzed	Dil Fac
Benzene	<0.00200	U	0.00200		mg/Kg		10/20/22 10:33	10/21/22 22:04	1
Toluene	<0.00200	U	0.00200		mg/Kg		10/20/22 10:33	10/21/22 22:04	1
Ethylbenzene	<0.00200	U	0.00200		mg/Kg		10/20/22 10:33	10/21/22 22:04	1
m-Xylene & p-Xylene	<0.00400	U	0.00400		mg/Kg		10/20/22 10:33	10/21/22 22:04	1
o-Xylene	<0.00200	U	0.00200		mg/Kg		10/20/22 10:33	10/21/22 22:04	1
Xylenes, Total	<0.00400	U	0.00400		mg/Kg		10/20/22 10:33	10/21/22 22:04	1

Surrogate	MB %Recovery	MB Qualifier	Limits	Prepared	Analyzed	Dil Fac
4-Bromofluorobenzene (Surr)	86		70 - 130	10/20/22 10:33	10/21/22 22:04	1
1,4-Difluorobenzene (Surr)	90		70 - 130	10/20/22 10:33	10/21/22 22:04	1

Eurofins Midland

QC Sample Results

Client: Carmona Resources
Project/Site: Copperhead 31-20 (10.17.22)

Job ID: 880-20552-1
SDG: Eddy County, New Mexico

Method: 8021B - Volatile Organic Compounds (GC) (Continued)

Lab Sample ID: LCS 880-37393/1-A

Matrix: Solid

Analysis Batch: 37450

Client Sample ID: Lab Control Sample

Prep Type: Total/NA

Prep Batch: 37393

Analyte	Spike Added	LCS Result	LCS Qualifier	Unit	D	%Rec	%Rec Limits
Benzene	0.100	0.1035		mg/Kg		103	70 - 130
Toluene	0.100	0.09351		mg/Kg		94	70 - 130
Ethylbenzene	0.100	0.09362		mg/Kg		94	70 - 130
m-Xylene & p-Xylene	0.200	0.1946		mg/Kg		97	70 - 130
o-Xylene	0.100	0.09697		mg/Kg		97	70 - 130

Surrogate	LCS %Recovery	LCS Qualifier	Limits
4-Bromofluorobenzene (Surr)	106		70 - 130
1,4-Difluorobenzene (Surr)	96		70 - 130

Lab Sample ID: LCSD 880-37393/2-A

Matrix: Solid

Analysis Batch: 37450

Client Sample ID: Lab Control Sample Dup

Prep Type: Total/NA

Prep Batch: 37393

Analyte	Spike Added	LCSD Result	LCSD Qualifier	Unit	D	%Rec	%Rec Limits	RPD	RPD Limit
Benzene	0.100	0.1088		mg/Kg		109	70 - 130	5	35
Toluene	0.100	0.09240		mg/Kg		92	70 - 130	1	35
Ethylbenzene	0.100	0.09214		mg/Kg		92	70 - 130	2	35
m-Xylene & p-Xylene	0.200	0.1875		mg/Kg		94	70 - 130	4	35
o-Xylene	0.100	0.09289		mg/Kg		93	70 - 130	4	35

Surrogate	LCSD %Recovery	LCSD Qualifier	Limits
4-Bromofluorobenzene (Surr)	109		70 - 130
1,4-Difluorobenzene (Surr)	111		70 - 130

Lab Sample ID: 880-20552-1 MS

Matrix: Solid

Analysis Batch: 37450

Client Sample ID: S-1 (0-3")

Prep Type: Total/NA

Prep Batch: 37393

Analyte	Sample Result	Sample Qualifier	Spike Added	MS Result	MS Qualifier	Unit	D	%Rec	%Rec Limits
Benzene	<0.00198	U F2 F1	0.0998	0.1003		mg/Kg		101	70 - 130
Toluene	<0.00198	U F1	0.0998	0.08361		mg/Kg		84	70 - 130
Ethylbenzene	<0.00198	U F1	0.0998	0.08101		mg/Kg		81	70 - 130
m-Xylene & p-Xylene	<0.00397	U F1	0.200	0.1647		mg/Kg		83	70 - 130
o-Xylene	<0.00198	U F2 F1	0.0998	0.08182		mg/Kg		82	70 - 130

Surrogate	MS %Recovery	MS Qualifier	Limits
4-Bromofluorobenzene (Surr)	101		70 - 130
1,4-Difluorobenzene (Surr)	111		70 - 130

Lab Sample ID: 880-20552-1 MSD

Matrix: Solid

Analysis Batch: 37450

Client Sample ID: S-1 (0-3")

Prep Type: Total/NA

Prep Batch: 37393

Analyte	Sample Result	Sample Qualifier	Spike Added	MSD Result	MSD Qualifier	Unit	D	%Rec	%Rec Limits	RPD	RPD Limit
Benzene	<0.00198	U F2 F1	0.101	<0.00202	U F2 F1	mg/Kg		0.4	70 - 130	198	35
Toluene	<0.00198	U F1	0.101	<0.00202	U F1	mg/Kg		0	70 - 130	NC	35
Ethylbenzene	<0.00198	U F1	0.101	<0.00202	U F1	mg/Kg		0	70 - 130	NC	35

Eurofins Midland

QC Sample Results

Client: Carmona Resources
Project/Site: Copperhead 31-20 (10.17.22)

Job ID: 880-20552-1
SDG: Eddy County, New Mexico

Method: 8021B - Volatile Organic Compounds (GC) (Continued)

Lab Sample ID: 880-20552-1 MSD

Matrix: Solid

Analysis Batch: 37450

Client Sample ID: S-1 (0-3")

Prep Type: Total/NA

Prep Batch: 37393

Analyte	Sample Result	Sample Qualifier	Spike Added	MSD Result	MSD Qualifier	Unit	D	%Rec	%Rec Limits	RPD	RPD Limit
m-Xylene & p-Xylene	<0.00397	U F1	0.202	<0.00404	U F1	mg/Kg		0	70 - 130	NC	35
o-Xylene	<0.00198	U F2 F1	0.101	<0.00202	U F2 F1	mg/Kg		0.4	70 - 130	198	35

Surrogate	MSD %Recovery	MSD Qualifier	Limits
4-Bromofluorobenzene (Surr)	85		70 - 130
1,4-Difluorobenzene (Surr)	92		70 - 130

Lab Sample ID: MB 880-37395/5-A

Matrix: Solid

Analysis Batch: 37351

Client Sample ID: Method Blank

Prep Type: Total/NA

Prep Batch: 37395

Analyte	MB Result	MB Qualifier	RL	MDL	Unit	D	Prepared	Analyzed	Dil Fac
Benzene	<0.00200	U	0.00200		mg/Kg		10/20/22 10:51	10/20/22 22:56	1
Toluene	<0.00200	U	0.00200		mg/Kg		10/20/22 10:51	10/20/22 22:56	1
Ethylbenzene	<0.00200	U	0.00200		mg/Kg		10/20/22 10:51	10/20/22 22:56	1
m-Xylene & p-Xylene	<0.00400	U	0.00400		mg/Kg		10/20/22 10:51	10/20/22 22:56	1
o-Xylene	<0.00200	U	0.00200		mg/Kg		10/20/22 10:51	10/20/22 22:56	1
Xylenes, Total	<0.00400	U	0.00400		mg/Kg		10/20/22 10:51	10/20/22 22:56	1

Surrogate	MB %Recovery	MB Qualifier	Limits	Prepared	Analyzed	Dil Fac
4-Bromofluorobenzene (Surr)	101		70 - 130	10/20/22 10:51	10/20/22 22:56	1
1,4-Difluorobenzene (Surr)	89		70 - 130	10/20/22 10:51	10/20/22 22:56	1

Lab Sample ID: LCS 880-37395/1-A

Matrix: Solid

Analysis Batch: 37351

Client Sample ID: Lab Control Sample

Prep Type: Total/NA

Prep Batch: 37395

Analyte	Spike Added	LCS Result	LCS Qualifier	Unit	D	%Rec	%Rec Limits
Benzene	0.100	0.1048		mg/Kg		105	70 - 130
Toluene	0.100	0.1036		mg/Kg		104	70 - 130
Ethylbenzene	0.100	0.09489		mg/Kg		95	70 - 130
m-Xylene & p-Xylene	0.200	0.1975		mg/Kg		99	70 - 130
o-Xylene	0.100	0.09975		mg/Kg		100	70 - 130

Surrogate	LCS %Recovery	LCS Qualifier	Limits
4-Bromofluorobenzene (Surr)	89		70 - 130
1,4-Difluorobenzene (Surr)	89		70 - 130

Lab Sample ID: LCSD 880-37395/2-A

Matrix: Solid

Analysis Batch: 37351

Client Sample ID: Lab Control Sample Dup

Prep Type: Total/NA

Prep Batch: 37395

Analyte	Spike Added	LCSD Result	LCSD Qualifier	Unit	D	%Rec	%Rec Limits	RPD	RPD Limit
Benzene	0.100	0.1005		mg/Kg		100	70 - 130	4	35
Toluene	0.100	0.1006		mg/Kg		101	70 - 130	3	35
Ethylbenzene	0.100	0.09294		mg/Kg		93	70 - 130	2	35
m-Xylene & p-Xylene	0.200	0.1937		mg/Kg		97	70 - 130	2	35
o-Xylene	0.100	0.09799		mg/Kg		98	70 - 130	2	35

Eurofins Midland

QC Sample Results

Client: Carmona Resources
Project/Site: Copperhead 31-20 (10.17.22)

Job ID: 880-20552-1
SDG: Eddy County, New Mexico

Method: 8021B - Volatile Organic Compounds (GC) (Continued)

	LCSD	LCSD	
Surrogate	%Recovery	Qualifier	Limits
4-Bromofluorobenzene (Surr)	89		70 - 130
1,4-Difluorobenzene (Surr)	89		70 - 130

Lab Sample ID: 890-3227-A-1-B MS

Matrix: Solid

Analysis Batch: 37351

Client Sample ID: Matrix Spike

Prep Type: Total/NA

Prep Batch: 37395

Analyte	Sample Result	Sample Qualifier	Spike Added	MS Result	MS Qualifier	Unit	D	%Rec	%Rec Limits
Benzene	0.0235	F1	0.101	0.07213	F1	mg/Kg		48	70 - 130
Toluene	0.0107	F1	0.101	0.06390	F1	mg/Kg		53	70 - 130
Ethylbenzene	0.0546	F1	0.101	0.05122	F1	mg/Kg		-3	70 - 130
m-Xylene & p-Xylene	0.00897	F1	0.201	0.1052	F1	mg/Kg		48	70 - 130
o-Xylene	0.00580	F1	0.101	0.05789	F1	mg/Kg		52	70 - 130

	MS	MS	
Surrogate	%Recovery	Qualifier	Limits
4-Bromofluorobenzene (Surr)	98		70 - 130
1,4-Difluorobenzene (Surr)	91		70 - 130

Lab Sample ID: 890-3227-A-1-C MSD

Matrix: Solid

Analysis Batch: 37351

Client Sample ID: Matrix Spike Duplicate

Prep Type: Total/NA

Prep Batch: 37395

Analyte	Sample Result	Sample Qualifier	Spike Added	MSD Result	MSD Qualifier	Unit	D	%Rec	%Rec Limits	RPD	Limit
Benzene	0.0235	F1	0.0994	0.06785	F1	mg/Kg		45	70 - 130	6	35
Toluene	0.0107	F1	0.0994	0.06453	F1	mg/Kg		54	70 - 130	1	35
Ethylbenzene	0.0546	F1	0.0994	0.05476	F1	mg/Kg		0.2	70 - 130	7	35
m-Xylene & p-Xylene	0.00897	F1	0.199	0.1090	F1	mg/Kg		50	70 - 130	4	35
o-Xylene	0.00580	F1	0.0994	0.05778	F1	mg/Kg		52	70 - 130	0	35

	MSD	MSD	
Surrogate	%Recovery	Qualifier	Limits
4-Bromofluorobenzene (Surr)	94		70 - 130
1,4-Difluorobenzene (Surr)	89		70 - 130

Method: 8015B NM - Diesel Range Organics (DRO) (GC)

Lab Sample ID: MB 880-37356/1-A

Matrix: Solid

Analysis Batch: 37363

Client Sample ID: Method Blank

Prep Type: Total/NA

Prep Batch: 37356

Analyte	MB Result	MB Qualifier	RL	MDL	Unit	D	Prepared	Analyzed	Dil Fac
Gasoline Range Organics (GRO)-C6-C10	<50.0	U	50.0		mg/Kg		10/20/22 08:22	10/20/22 11:05	1
Diesel Range Organics (Over C10-C28)	<50.0	U	50.0		mg/Kg		10/20/22 08:22	10/20/22 11:05	1
Oil Range Organics (Over C28-C36)	<50.0	U	50.0		mg/Kg		10/20/22 08:22	10/20/22 11:05	1

	MB	MB							
Surrogate	%Recovery	Qualifier	Limits	Prepared	Analyzed	Dil Fac			
1-Chlorooctane	81		70 - 130	10/20/22 08:22	10/20/22 11:05	1			
o-Terphenyl	88		70 - 130	10/20/22 08:22	10/20/22 11:05	1			

Eurofins Midland

QC Sample Results

Client: Carmona Resources
Project/Site: Copperhead 31-20 (10.17.22)

Job ID: 880-20552-1
SDG: Eddy County, New Mexico

Method: 8015B NM - Diesel Range Organics (DRO) (GC) (Continued)

Lab Sample ID: LCS 880-37356/2-A

Matrix: Solid

Analysis Batch: 37363

Client Sample ID: Lab Control Sample

Prep Type: Total/NA

Prep Batch: 37356

Analyte			Spike	LCS	LCS	%Rec					
			Added	Result	Qualifier	Unit	D	%Rec	Limits		
Gasoline Range Organics (GRO)-C6-C10			1000	977.2		mg/Kg		98	70 - 130		
Diesel Range Organics (Over C10-C28)			1000	803.5		mg/Kg		80	70 - 130		
		LCS	LCS								
Surrogate	%Recovery	Qualifier	Limits								
1-Chlorooctane	88		70 - 130								
o-Terphenyl	94		70 - 130								

Lab Sample ID: LCSD 880-37356/3-A

Matrix: Solid

Analysis Batch: 37363

Client Sample ID: Lab Control Sample Dup

Prep Type: Total/NA

Prep Batch: 37356

			Spike	LCSD	LCSD				%Rec			RPD
Analyte			Added	Result	Qualifier	Unit	D	%Rec	Limits		RPD	Limit
Gasoline Range Organics (GRO)-C6-C10			1000	958.2		mg/Kg		96	70 - 130		2	20
Diesel Range Organics (Over C10-C28)			1000	831.2		mg/Kg		83	70 - 130		3	20
			LCSD	LCSD								
Surrogate	%Recovery	Qualifier	Limits									
1-Chlorooctane	89		70 - 130									
o-Terphenyl	94		70 - 130									

Lab Sample ID: 880-20552-1 MS

Matrix: Solid

Analysis Batch: 37363

Client Sample ID: S-1 (0-3")

Prep Type: Total/NA

Prep Batch: 37356

Analyte	Sample	Sample	Spike	MS	MS	Unit	D	%Rec	%Rec		
	Result	Qualifier	Added	Result	Qualifier			Limits	Limits		
Gasoline Range Organics (GRO)-C6-C10	<49.8	U	998	1016		mg/Kg		100	70 - 130		
Diesel Range Organics (Over C10-C28)	<49.8	U F1	998	685.4	F1	mg/Kg		69	70 - 130		
Surrogate	MS	MS									
	%Recovery	Qualifier	Limits								
1-Chlorooctane	78		70 - 130								
o-Terphenyl	75		70 - 130								

Lab Sample ID: 880-20552-1 MSD

Matrix: Solid

Analysis Batch: 37363

Client Sample ID: S-1 (0-3")

Prep Type: Total/NA

Prep Batch: 37356

	Sample	Sample	Spike	MSD	MSD			%Rec		RPD	
Analyte	Result	Qualifier	Added	Result	Qualifier	Unit	D	%Rec	Limits	RPD	Limit
Gasoline Range Organics (GRO)-C6-C10	<49.8	U	998	1148		mg/Kg		113	70 - 130	12	20
Diesel Range Organics (Over C10-C28)	<49.8	U F1	998	724.0		mg/Kg		73	70 - 130	5	20
Surrogate	MSD %Recovery	MSD Qualifier	Limits								
1-Chlorooctane	81		70 - 130								

Eurofins Midland

QC Sample Results

Client: Carmona Resources
Project/Site: Copperhead 31-20 (10.17.22)

Job ID: 880-20552-1
SDG: Eddy County, New Mexico

Method: 8015B NM - Diesel Range Organics (DRO) (GC) (Continued)

Lab Sample ID: 880-20552-1 MSD

Matrix: Solid

Analysis Batch: 37363

Client Sample ID: S-1 (0-3")

Prep Type: Total/NA

Prep Batch: 37356

	MSD	MSD	
Surrogate	%Recovery	Qualifier	Limits
<i>o</i> -Terphenyl	77		70 - 130

Method: 300.0 - Anions, Ion Chromatography

Lab Sample ID: MB 880-37369/1-A

Matrix: Solid

Analysis Batch: 37413

Client Sample ID: Method Blank

Prep Type: Soluble

	MB	MB								
Analyte	Result	Qualifier	RL	MDL	Unit	D	Prepared	Analyzed	Dil	Fac
Chloride	<5.00	U	5.00		mg/Kg			10/20/22 21:44		1

Lab Sample ID: LCS 880-37369/2-A

Matrix: Solid

Analysis Batch: 37413

Client Sample ID: Lab Control Sample

Prep Type: Soluble

			Spike	LCS	LCS				%Rec	
Analyte			Added	Result	Qualifier	Unit	D	%Rec	Limits	
Chloride			250	273.5		mg/Kg		109	90 - 110	

Lab Sample ID: LCSD 880-37369/3-A

Matrix: Solid

Analysis Batch: 37413

Client Sample ID: Lab Control Sample Dup

Prep Type: Soluble

			Spike	LCSD	LCSD				%Rec		RPD
Analyte			Added	Result	Qualifier	Unit	D	%Rec	Limits	RPD	Limit
Chloride			250	274.7		mg/Kg		110	90 - 110	0	20

Lab Sample ID: 880-20552-1 MS

Matrix: Solid

Analysis Batch: 37413

Client Sample ID: S-1 (0-3")

Prep Type: Soluble

	Sample	Sample	Spike	MS	MS				%Rec		
Analyte	Result	Qualifier	Added	Result	Qualifier	Unit	D	%Rec	Limits		
Chloride	731		2500	3361		mg/Kg		105	90 - 110		

Lab Sample ID: 880-20552-1 MSD

Matrix: Solid

Analysis Batch: 37413

Client Sample ID: S-1 (0-3")

Prep Type: Soluble

	Sample	Sample	Spike	MSD	MSD				%Rec		RPD
Analyte	Result	Qualifier	Added	Result	Qualifier	Unit	D	%Rec	Limits	RPD	Limit
Chloride	731		2500	3163		mg/Kg		97	90 - 110	6	20

Lab Sample ID: 880-20552-11 MS

Matrix: Solid

Analysis Batch: 37413

Client Sample ID: H-2 (0-6")

Prep Type: Soluble

	Sample	Sample	Spike	MS	MS				%Rec		
Analyte	Result	Qualifier	Added	Result	Qualifier	Unit	D	%Rec	Limits		
Chloride	25.3		249	277.6		mg/Kg		102	90 - 110		

Eurofins Midland

QC Sample Results

Client: Carmona Resources
Project/Site: Copperhead 31-20 (10.17.22)

Job ID: 880-20552-1
SDG: Eddy County, New Mexico

Method: 300.0 - Anions, Ion Chromatography (Continued)

Lab Sample ID: 880-20552-11 MSD					Client Sample ID: H-2 (0-6")							
Matrix: Solid					Prep Type: Soluble							
Analysis Batch: 37413												
Analyte	Sample Result	Sample Qualifier	Spike Added	MSD Result	MSD Qualifier	Unit	D	%Rec	%Rec Limits	RPD	RPD Limit	
Chloride	25.3		249	266.3		mg/Kg		97	90 - 110	4	20	

QC Association Summary

Client: Carmona Resources
Project/Site: Copperhead 31-20 (10.17.22)

Job ID: 880-20552-1
SDG: Eddy County, New Mexico

GC VOA

Prep Batch: 37154

Lab Sample ID	Client Sample ID	Prep Type	Matrix	Method	Prep Batch
MB 880-37154/5-A	Method Blank	Total/NA	Solid	5035	

Prep Batch: 37160

Lab Sample ID	Client Sample ID	Prep Type	Matrix	Method	Prep Batch
MB 880-37160/5-A	Method Blank	Total/NA	Solid	5035	

Analysis Batch: 37351

Lab Sample ID	Client Sample ID	Prep Type	Matrix	Method	Prep Batch
880-20552-8	S-3 (6")	Total/NA	Solid	8021B	37395
880-20552-9	S-3 (12")	Total/NA	Solid	8021B	37395
880-20552-10	H-1 (0-6")	Total/NA	Solid	8021B	37395
880-20552-11	H-2 (0-6")	Total/NA	Solid	8021B	37395
880-20552-12	H-3 (0-6")	Total/NA	Solid	8021B	37395
880-20552-13	H-4 (0-6")	Total/NA	Solid	8021B	37395
MB 880-37154/5-A	Method Blank	Total/NA	Solid	8021B	37154
MB 880-37395/5-A	Method Blank	Total/NA	Solid	8021B	37395
LCS 880-37395/1-A	Lab Control Sample	Total/NA	Solid	8021B	37395
LCSD 880-37395/2-A	Lab Control Sample Dup	Total/NA	Solid	8021B	37395
890-3227-A-1-B MS	Matrix Spike	Total/NA	Solid	8021B	37395
890-3227-A-1-C MSD	Matrix Spike Duplicate	Total/NA	Solid	8021B	37395

Prep Batch: 37393

Lab Sample ID	Client Sample ID	Prep Type	Matrix	Method	Prep Batch
880-20552-1	S-1 (0-3")	Total/NA	Solid	5035	
880-20552-2	S-1 (6")	Total/NA	Solid	5035	
880-20552-3	S-1 (12")	Total/NA	Solid	5035	
880-20552-4	S-2 (0-3")	Total/NA	Solid	5035	
880-20552-5	S-2 (6")	Total/NA	Solid	5035	
880-20552-6	S-2 (12")	Total/NA	Solid	5035	
880-20552-7	S-3 (0-3")	Total/NA	Solid	5035	
MB 880-37393/5-A	Method Blank	Total/NA	Solid	5035	
LCS 880-37393/1-A	Lab Control Sample	Total/NA	Solid	5035	
LCSD 880-37393/2-A	Lab Control Sample Dup	Total/NA	Solid	5035	
880-20552-1 MS	S-1 (0-3")	Total/NA	Solid	5035	
880-20552-1 MSD	S-1 (0-3")	Total/NA	Solid	5035	

Prep Batch: 37395

Lab Sample ID	Client Sample ID	Prep Type	Matrix	Method	Prep Batch
880-20552-8	S-3 (6")	Total/NA	Solid	5035	
880-20552-9	S-3 (12")	Total/NA	Solid	5035	
880-20552-10	H-1 (0-6")	Total/NA	Solid	5035	
880-20552-11	H-2 (0-6")	Total/NA	Solid	5035	
880-20552-12	H-3 (0-6")	Total/NA	Solid	5035	
880-20552-13	H-4 (0-6")	Total/NA	Solid	5035	
MB 880-37395/5-A	Method Blank	Total/NA	Solid	5035	
LCS 880-37395/1-A	Lab Control Sample	Total/NA	Solid	5035	
LCSD 880-37395/2-A	Lab Control Sample Dup	Total/NA	Solid	5035	
890-3227-A-1-B MS	Matrix Spike	Total/NA	Solid	5035	
890-3227-A-1-C MSD	Matrix Spike Duplicate	Total/NA	Solid	5035	

Eurofins Midland

QC Association Summary

Client: Carmona Resources

Job ID: 880-20552-1

Project/Site: Copperhead 31-20 (10.17.22)

SDG: Eddy County, New Mexico

GC VOA

Analysis Batch: 37450

Lab Sample ID	Client Sample ID	Prep Type	Matrix	Method	Prep Batch
880-20552-1	S-1 (0-3")	Total/NA	Solid	8021B	37393
880-20552-2	S-1 (6")	Total/NA	Solid	8021B	37393
880-20552-3	S-1 (12")	Total/NA	Solid	8021B	37393
880-20552-4	S-2 (0-3")	Total/NA	Solid	8021B	37393
880-20552-5	S-2 (6")	Total/NA	Solid	8021B	37393
880-20552-6	S-2 (12")	Total/NA	Solid	8021B	37393
880-20552-7	S-3 (0-3")	Total/NA	Solid	8021B	37393
MB 880-37160/5-A	Method Blank	Total/NA	Solid	8021B	37160
MB 880-37393/5-A	Method Blank	Total/NA	Solid	8021B	37393
LCS 880-37393/1-A	Lab Control Sample	Total/NA	Solid	8021B	37393
LCSD 880-37393/2-A	Lab Control Sample Dup	Total/NA	Solid	8021B	37393
880-20552-1 MS	S-1 (0-3")	Total/NA	Solid	8021B	37393
880-20552-1 MSD	S-1 (0-3")	Total/NA	Solid	8021B	37393

Analysis Batch: 37499

Lab Sample ID	Client Sample ID	Prep Type	Matrix	Method	Prep Batch
880-20552-1	S-1 (0-3")	Total/NA	Solid	Total BTEX	
880-20552-2	S-1 (6")	Total/NA	Solid	Total BTEX	
880-20552-3	S-1 (12")	Total/NA	Solid	Total BTEX	
880-20552-4	S-2 (0-3")	Total/NA	Solid	Total BTEX	
880-20552-5	S-2 (6")	Total/NA	Solid	Total BTEX	
880-20552-6	S-2 (12")	Total/NA	Solid	Total BTEX	
880-20552-7	S-3 (0-3")	Total/NA	Solid	Total BTEX	
880-20552-8	S-3 (6")	Total/NA	Solid	Total BTEX	
880-20552-9	S-3 (12")	Total/NA	Solid	Total BTEX	
880-20552-10	H-1 (0-6")	Total/NA	Solid	Total BTEX	
880-20552-11	H-2 (0-6")	Total/NA	Solid	Total BTEX	
880-20552-12	H-3 (0-6")	Total/NA	Solid	Total BTEX	
880-20552-13	H-4 (0-6")	Total/NA	Solid	Total BTEX	

GC Semi VOA

Prep Batch: 37356

Lab Sample ID	Client Sample ID	Prep Type	Matrix	Method	Prep Batch
880-20552-1	S-1 (0-3")	Total/NA	Solid	8015NM Prep	
880-20552-2	S-1 (6")	Total/NA	Solid	8015NM Prep	
880-20552-3	S-1 (12")	Total/NA	Solid	8015NM Prep	
880-20552-4	S-2 (0-3")	Total/NA	Solid	8015NM Prep	
880-20552-5	S-2 (6")	Total/NA	Solid	8015NM Prep	
880-20552-6	S-2 (12")	Total/NA	Solid	8015NM Prep	
880-20552-7	S-3 (0-3")	Total/NA	Solid	8015NM Prep	
880-20552-8	S-3 (6")	Total/NA	Solid	8015NM Prep	
880-20552-9	S-3 (12")	Total/NA	Solid	8015NM Prep	
880-20552-10	H-1 (0-6")	Total/NA	Solid	8015NM Prep	
880-20552-11	H-2 (0-6")	Total/NA	Solid	8015NM Prep	
880-20552-12	H-3 (0-6")	Total/NA	Solid	8015NM Prep	
880-20552-13	H-4 (0-6")	Total/NA	Solid	8015NM Prep	
MB 880-37356/1-A	Method Blank	Total/NA	Solid	8015NM Prep	
LCS 880-37356/2-A	Lab Control Sample	Total/NA	Solid	8015NM Prep	
LCSD 880-37356/3-A	Lab Control Sample Dup	Total/NA	Solid	8015NM Prep	
880-20552-1 MS	S-1 (0-3")	Total/NA	Solid	8015NM Prep	

Eurofins Midland

QC Association Summary

Client: Carmona Resources
Project/Site: Copperhead 31-20 (10.17.22)

Job ID: 880-20552-1
SDG: Eddy County, New Mexico

GC Semi VOA (Continued)

Prep Batch: 37356 (Continued)

Lab Sample ID	Client Sample ID	Prep Type	Matrix	Method	Prep Batch
880-20552-1 MSD	S-1 (0-3")	Total/NA	Solid	8015NM Prep	

Analysis Batch: 37363

Lab Sample ID	Client Sample ID	Prep Type	Matrix	Method	Prep Batch
880-20552-1	S-1 (0-3")	Total/NA	Solid	8015B NM	37356
880-20552-2	S-1 (6")	Total/NA	Solid	8015B NM	37356
880-20552-3	S-1 (12")	Total/NA	Solid	8015B NM	37356
880-20552-4	S-2 (0-3")	Total/NA	Solid	8015B NM	37356
880-20552-5	S-2 (6")	Total/NA	Solid	8015B NM	37356
880-20552-6	S-2 (12")	Total/NA	Solid	8015B NM	37356
880-20552-7	S-3 (0-3")	Total/NA	Solid	8015B NM	37356
880-20552-8	S-3 (6")	Total/NA	Solid	8015B NM	37356
880-20552-9	S-3 (12")	Total/NA	Solid	8015B NM	37356
880-20552-10	H-1 (0-6")	Total/NA	Solid	8015B NM	37356
880-20552-11	H-2 (0-6")	Total/NA	Solid	8015B NM	37356
880-20552-12	H-3 (0-6")	Total/NA	Solid	8015B NM	37356
880-20552-13	H-4 (0-6")	Total/NA	Solid	8015B NM	37356
MB 880-37356/1-A	Method Blank	Total/NA	Solid	8015B NM	37356
LCS 880-37356/2-A	Lab Control Sample	Total/NA	Solid	8015B NM	37356
LCSD 880-37356/3-A	Lab Control Sample Dup	Total/NA	Solid	8015B NM	37356
880-20552-1 MS	S-1 (0-3")	Total/NA	Solid	8015B NM	37356
880-20552-1 MSD	S-1 (0-3")	Total/NA	Solid	8015B NM	37356

Analysis Batch: 37483

Lab Sample ID	Client Sample ID	Prep Type	Matrix	Method	Prep Batch
880-20552-1	S-1 (0-3")	Total/NA	Solid	8015 NM	
880-20552-2	S-1 (6")	Total/NA	Solid	8015 NM	
880-20552-3	S-1 (12")	Total/NA	Solid	8015 NM	
880-20552-4	S-2 (0-3")	Total/NA	Solid	8015 NM	
880-20552-5	S-2 (6")	Total/NA	Solid	8015 NM	
880-20552-6	S-2 (12")	Total/NA	Solid	8015 NM	
880-20552-7	S-3 (0-3")	Total/NA	Solid	8015 NM	
880-20552-8	S-3 (6")	Total/NA	Solid	8015 NM	
880-20552-9	S-3 (12")	Total/NA	Solid	8015 NM	
880-20552-10	H-1 (0-6")	Total/NA	Solid	8015 NM	
880-20552-11	H-2 (0-6")	Total/NA	Solid	8015 NM	
880-20552-12	H-3 (0-6")	Total/NA	Solid	8015 NM	
880-20552-13	H-4 (0-6")	Total/NA	Solid	8015 NM	

HPLC/IC

Leach Batch: 37369

Lab Sample ID	Client Sample ID	Prep Type	Matrix	Method	Prep Batch
880-20552-1	S-1 (0-3")	Soluble	Solid	DI Leach	
880-20552-2	S-1 (6")	Soluble	Solid	DI Leach	
880-20552-3	S-1 (12")	Soluble	Solid	DI Leach	
880-20552-4	S-2 (0-3")	Soluble	Solid	DI Leach	
880-20552-5	S-2 (6")	Soluble	Solid	DI Leach	
880-20552-6	S-2 (12")	Soluble	Solid	DI Leach	
880-20552-7	S-3 (0-3")	Soluble	Solid	DI Leach	
880-20552-8	S-3 (6")	Soluble	Solid	DI Leach	

Eurofins Midland

QC Association Summary

Client: Carmona Resources
Project/Site: Copperhead 31-20 (10.17.22)

Job ID: 880-20552-1
SDG: Eddy County, New Mexico

HPLC/IC (Continued)

Leach Batch: 37369 (Continued)

Lab Sample ID	Client Sample ID	Prep Type	Matrix	Method	Prep Batch
880-20552-9	S-3 (12")	Soluble	Solid	DI Leach	
880-20552-10	H-1 (0-6")	Soluble	Solid	DI Leach	
880-20552-11	H-2 (0-6")	Soluble	Solid	DI Leach	
880-20552-12	H-3 (0-6")	Soluble	Solid	DI Leach	
880-20552-13	H-4 (0-6")	Soluble	Solid	DI Leach	
MB 880-37369/1-A	Method Blank	Soluble	Solid	DI Leach	
LCS 880-37369/2-A	Lab Control Sample	Soluble	Solid	DI Leach	
LCSD 880-37369/3-A	Lab Control Sample Dup	Soluble	Solid	DI Leach	
880-20552-1 MS	S-1 (0-3")	Soluble	Solid	DI Leach	
880-20552-1 MSD	S-1 (0-3")	Soluble	Solid	DI Leach	
880-20552-11 MS	H-2 (0-6")	Soluble	Solid	DI Leach	
880-20552-11 MSD	H-2 (0-6")	Soluble	Solid	DI Leach	

Analysis Batch: 37413

Lab Sample ID	Client Sample ID	Prep Type	Matrix	Method	Prep Batch
880-20552-1	S-1 (0-3")	Soluble	Solid	300.0	37369
880-20552-2	S-1 (6")	Soluble	Solid	300.0	37369
880-20552-3	S-1 (12")	Soluble	Solid	300.0	37369
880-20552-4	S-2 (0-3")	Soluble	Solid	300.0	37369
880-20552-5	S-2 (6")	Soluble	Solid	300.0	37369
880-20552-6	S-2 (12")	Soluble	Solid	300.0	37369
880-20552-7	S-3 (0-3")	Soluble	Solid	300.0	37369
880-20552-8	S-3 (6")	Soluble	Solid	300.0	37369
880-20552-9	S-3 (12")	Soluble	Solid	300.0	37369
880-20552-10	H-1 (0-6")	Soluble	Solid	300.0	37369
880-20552-11	H-2 (0-6")	Soluble	Solid	300.0	37369
880-20552-12	H-3 (0-6")	Soluble	Solid	300.0	37369
880-20552-13	H-4 (0-6")	Soluble	Solid	300.0	37369
MB 880-37369/1-A	Method Blank	Soluble	Solid	300.0	37369
LCS 880-37369/2-A	Lab Control Sample	Soluble	Solid	300.0	37369
LCSD 880-37369/3-A	Lab Control Sample Dup	Soluble	Solid	300.0	37369
880-20552-1 MS	S-1 (0-3")	Soluble	Solid	300.0	37369
880-20552-1 MSD	S-1 (0-3")	Soluble	Solid	300.0	37369
880-20552-11 MS	H-2 (0-6")	Soluble	Solid	300.0	37369
880-20552-11 MSD	H-2 (0-6")	Soluble	Solid	300.0	37369

Lab Chronicle

Client: Carmona Resources
Project/Site: Copperhead 31-20 (10.17.22)

Job ID: 880-20552-1
SDG: Eddy County, New Mexico

Client Sample ID: S-1 (0-3")

Lab Sample ID: 880-20552-1

Date Collected: 10/19/22 00:00

Matrix: Solid

Date Received: 10/20/22 08:06

Prep Type	Batch Type	Batch Method	Run	Dil Factor	Initial Amount	Final Amount	Batch Number	Prepared or Analyzed	Analyst	Lab
Total/NA	Prep	5035			5.04 mL	5 g	37393	10/20/22 10:33	EL	EET MID
Total/NA	Analysis	8021B		1	5 mL	5 mL	37450	10/21/22 22:26	MNR	EET MID
Total/NA	Analysis	Total BTEX		1			37499	10/24/22 16:16	SM	EET MID
Total/NA	Analysis	8015 NM		1			37483	10/21/22 12:35	SM	EET MID
Total/NA	Prep	8015NM Prep			10.04 g	10 mL	37356	10/20/22 08:22	DM	EET MID
Total/NA	Analysis	8015B NM		1	1 uL	1 uL	37363	10/20/22 12:06	SM	EET MID
Soluble	Leach	DI Leach			5.01 g	50 mL	37369	10/20/22 09:15	KS	EET MID
Soluble	Analysis	300.0		10	50 mL	50 mL	37413	10/20/22 21:59	CH	EET MID

Client Sample ID: S-1 (6")

Lab Sample ID: 880-20552-2

Date Collected: 10/19/22 00:00

Matrix: Solid

Date Received: 10/20/22 08:06

Prep Type	Batch Type	Batch Method	Run	Dil Factor	Initial Amount	Final Amount	Batch Number	Prepared or Analyzed	Analyst	Lab
Total/NA	Prep	5035			4.99 mL	5 g	37393	10/20/22 10:33	EL	EET MID
Total/NA	Analysis	8021B		1	5 mL	5 mL	37450	10/22/22 02:53	MNR	EET MID
Total/NA	Analysis	Total BTEX		1			37499	10/24/22 16:16	SM	EET MID
Total/NA	Analysis	8015 NM		1			37483	10/21/22 12:35	SM	EET MID
Total/NA	Prep	8015NM Prep			10.03 g	10 mL	37356	10/20/22 08:22	DM	EET MID
Total/NA	Analysis	8015B NM		1	1 uL	1 uL	37363	10/20/22 13:09	SM	EET MID
Soluble	Leach	DI Leach			5.05 g	50 mL	37369	10/20/22 09:15	KS	EET MID
Soluble	Analysis	300.0		10	50 mL	50 mL	37413	10/20/22 22:13	CH	EET MID

Client Sample ID: S-1 (12")

Lab Sample ID: 880-20552-3

Date Collected: 10/19/22 00:00

Matrix: Solid

Date Received: 10/20/22 08:06

Prep Type	Batch Type	Batch Method	Run	Dil Factor	Initial Amount	Final Amount	Batch Number	Prepared or Analyzed	Analyst	Lab
Total/NA	Prep	5035			5.01 mL	5 g	37393	10/20/22 10:33	EL	EET MID
Total/NA	Analysis	8021B		1	5 mL	5 mL	37450	10/22/22 03:13	MNR	EET MID
Total/NA	Analysis	Total BTEX		1			37499	10/24/22 16:16	SM	EET MID
Total/NA	Analysis	8015 NM		1			37483	10/21/22 12:35	SM	EET MID
Total/NA	Prep	8015NM Prep			10.04 g	10 mL	37356	10/20/22 08:22	DM	EET MID
Total/NA	Analysis	8015B NM		1	1 uL	1 uL	37363	10/20/22 13:30	SM	EET MID
Soluble	Leach	DI Leach			5.02 g	50 mL	37369	10/20/22 09:15	KS	EET MID
Soluble	Analysis	300.0		5	50 mL	50 mL	37413	10/20/22 22:18	CH	EET MID

Client Sample ID: S-2 (0-3")

Lab Sample ID: 880-20552-4

Date Collected: 10/19/22 00:00

Matrix: Solid

Date Received: 10/20/22 08:06

Prep Type	Batch Type	Batch Method	Run	Dil Factor	Initial Amount	Final Amount	Batch Number	Prepared or Analyzed	Analyst	Lab
Total/NA	Prep	5035			5.00 mL	5 g	37393	10/20/22 10:33	EL	EET MID
Total/NA	Analysis	8021B		1	5 mL	5 mL	37450	10/22/22 03:34	MNR	EET MID
Total/NA	Analysis	Total BTEX		1			37499	10/24/22 16:16	SM	EET MID

Eurofins Midland

Lab Chronicle

Client: Carmona Resources
Project/Site: Copperhead 31-20 (10.17.22)

Job ID: 880-20552-1
SDG: Eddy County, New Mexico

Client Sample ID: S-2 (0-3")

Lab Sample ID: 880-20552-4

Date Collected: 10/19/22 00:00

Matrix: Solid

Date Received: 10/20/22 08:06

Prep Type	Batch Type	Batch Method	Run	Dil Factor	Initial Amount	Final Amount	Batch Number	Prepared or Analyzed	Analyst	Lab
Total/NA	Analysis	8015 NM		1			37483	10/21/22 12:35	SM	EET MID
Total/NA	Prep	8015NM Prep			10.02 g	10 mL	37356	10/20/22 08:22	DM	EET MID
Total/NA	Analysis	8015B NM		1	1 uL	1 uL	37363	10/20/22 13:51	SM	EET MID
Soluble	Leach	DI Leach			4.99 g	50 mL	37369	10/20/22 09:15	KS	EET MID
Soluble	Analysis	300.0		1	50 mL	50 mL	37413	10/20/22 22:23	CH	EET MID

Client Sample ID: S-2 (6")

Lab Sample ID: 880-20552-5

Date Collected: 10/19/22 00:00

Matrix: Solid

Date Received: 10/20/22 08:06

Prep Type	Batch Type	Batch Method	Run	Dil Factor	Initial Amount	Final Amount	Batch Number	Prepared or Analyzed	Analyst	Lab
Total/NA	Prep	5035			5.04 mL	5 g	37393	10/20/22 10:33	EL	EET MID
Total/NA	Analysis	8021B		1	5 mL	5 mL	37450	10/22/22 03:54	MNR	EET MID
Total/NA	Analysis	Total BTEX		1			37499	10/24/22 16:16	SM	EET MID
Total/NA	Analysis	8015 NM		1			37483	10/21/22 12:35	SM	EET MID
Total/NA	Prep	8015NM Prep			10.02 g	10 mL	37356	10/20/22 08:22	DM	EET MID
Total/NA	Analysis	8015B NM		1	1 uL	1 uL	37363	10/20/22 14:12	SM	EET MID
Soluble	Leach	DI Leach			4.96 g	50 mL	37369	10/20/22 09:15	KS	EET MID
Soluble	Analysis	300.0		1	50 mL	50 mL	37413	10/20/22 22:28	CH	EET MID

Client Sample ID: S-2 (12")

Lab Sample ID: 880-20552-6

Date Collected: 10/19/22 00:00

Matrix: Solid

Date Received: 10/20/22 08:06

Prep Type	Batch Type	Batch Method	Run	Dil Factor	Initial Amount	Final Amount	Batch Number	Prepared or Analyzed	Analyst	Lab
Total/NA	Prep	5035			5.05 mL	5 g	37393	10/20/22 10:33	EL	EET MID
Total/NA	Analysis	8021B		1	5 mL	5 mL	37450	10/22/22 04:15	MNR	EET MID
Total/NA	Analysis	Total BTEX		1			37499	10/24/22 16:16	SM	EET MID
Total/NA	Analysis	8015 NM		1			37483	10/21/22 12:35	SM	EET MID
Total/NA	Prep	8015NM Prep			10.03 g	10 mL	37356	10/20/22 08:22	DM	EET MID
Total/NA	Analysis	8015B NM		1	1 uL	1 uL	37363	10/20/22 14:33	SM	EET MID
Soluble	Leach	DI Leach			4.97 g	50 mL	37369	10/20/22 09:15	KS	EET MID
Soluble	Analysis	300.0		1	50 mL	50 mL	37413	10/20/22 22:43	CH	EET MID

Client Sample ID: S-3 (0-3")

Lab Sample ID: 880-20552-7

Date Collected: 10/19/22 00:00

Matrix: Solid

Date Received: 10/20/22 08:06

Prep Type	Batch Type	Batch Method	Run	Dil Factor	Initial Amount	Final Amount	Batch Number	Prepared or Analyzed	Analyst	Lab
Total/NA	Prep	5035			4.99 mL	5 g	37393	10/20/22 10:33	EL	EET MID
Total/NA	Analysis	8021B		1	5 mL	5 mL	37450	10/22/22 04:35	MNR	EET MID
Total/NA	Analysis	Total BTEX		1			37499	10/24/22 16:16	SM	EET MID
Total/NA	Analysis	8015 NM		1			37483	10/21/22 12:35	SM	EET MID
Total/NA	Prep	8015NM Prep			10.00 g	10 mL	37356	10/20/22 08:22	DM	EET MID
Total/NA	Analysis	8015B NM		1	1 uL	1 uL	37363	10/20/22 14:54	SM	EET MID

Eurofins Midland

Lab Chronicle

Client: Carmona Resources
Project/Site: Copperhead 31-20 (10.17.22)

Job ID: 880-20552-1
SDG: Eddy County, New Mexico

Client Sample ID: S-3 (0-3")

Lab Sample ID: 880-20552-7

Date Collected: 10/19/22 00:00

Matrix: Solid

Date Received: 10/20/22 08:06

Prep Type	Batch Type	Batch Method	Run	Dil Factor	Initial Amount	Final Amount	Batch Number	Prepared or Analyzed	Analyst	Lab
Soluble	Leach	DI Leach			4.95 g	50 mL	37369	10/20/22 09:15	KS	EET MID
Soluble	Analysis	300.0		1	50 mL	50 mL	37413	10/20/22 22:47	CH	EET MID

Client Sample ID: S-3 (6")

Lab Sample ID: 880-20552-8

Date Collected: 10/19/22 00:00

Matrix: Solid

Date Received: 10/20/22 08:06

Prep Type	Batch Type	Batch Method	Run	Dil Factor	Initial Amount	Final Amount	Batch Number	Prepared or Analyzed	Analyst	Lab
Total/NA	Prep	5035			4.96 g	5 mL	37395	10/20/22 10:51	MNR	EET MID
Total/NA	Analysis	8021B		1	5 mL	5 mL	37351	10/21/22 04:30	MNR	EET MID
Total/NA	Analysis	Total BTEX		1			37499	10/21/22 13:44	SM	EET MID
Total/NA	Analysis	8015 NM		1			37483	10/21/22 12:35	SM	EET MID
Total/NA	Prep	8015NM Prep			10.01 g	10 mL	37356	10/20/22 08:22	DM	EET MID
Total/NA	Analysis	8015B NM		1	1 uL	1 uL	37363	10/20/22 15:15	SM	EET MID
Soluble	Leach	DI Leach			4.96 g	50 mL	37369	10/20/22 09:15	KS	EET MID
Soluble	Analysis	300.0		1	50 mL	50 mL	37413	10/20/22 22:52	CH	EET MID

Client Sample ID: S-3 (12")

Lab Sample ID: 880-20552-9

Date Collected: 10/19/22 00:00

Matrix: Solid

Date Received: 10/20/22 08:06

Prep Type	Batch Type	Batch Method	Run	Dil Factor	Initial Amount	Final Amount	Batch Number	Prepared or Analyzed	Analyst	Lab
Total/NA	Prep	5035			5.04 g	5 mL	37395	10/20/22 10:51	MNR	EET MID
Total/NA	Analysis	8021B		1	5 mL	5 mL	37351	10/21/22 04:50	MNR	EET MID
Total/NA	Analysis	Total BTEX		1			37499	10/21/22 13:44	SM	EET MID
Total/NA	Analysis	8015 NM		1			37483	10/21/22 12:35	SM	EET MID
Total/NA	Prep	8015NM Prep			10.04 g	10 mL	37356	10/20/22 08:22	DM	EET MID
Total/NA	Analysis	8015B NM		1	1 uL	1 uL	37363	10/20/22 15:36	SM	EET MID
Soluble	Leach	DI Leach			4.98 g	50 mL	37369	10/20/22 09:15	KS	EET MID
Soluble	Analysis	300.0		1	50 mL	50 mL	37413	10/20/22 22:57	CH	EET MID

Client Sample ID: H-1 (0-6")

Lab Sample ID: 880-20552-10

Date Collected: 10/19/22 00:00

Matrix: Solid

Date Received: 10/20/22 08:06

Prep Type	Batch Type	Batch Method	Run	Dil Factor	Initial Amount	Final Amount	Batch Number	Prepared or Analyzed	Analyst	Lab
Total/NA	Prep	5035			5.03 g	5 mL	37395	10/20/22 10:51	MNR	EET MID
Total/NA	Analysis	8021B		1	5 mL	5 mL	37351	10/21/22 05:11	MNR	EET MID
Total/NA	Analysis	Total BTEX		1			37499	10/21/22 13:44	SM	EET MID
Total/NA	Analysis	8015 NM		1			37483	10/21/22 12:35	SM	EET MID
Total/NA	Prep	8015NM Prep			10.04 g	10 mL	37356	10/20/22 08:22	DM	EET MID
Total/NA	Analysis	8015B NM		1	1 uL	1 uL	37363	10/20/22 15:57	SM	EET MID
Soluble	Leach	DI Leach			5.01 g	50 mL	37369	10/20/22 09:15	KS	EET MID
Soluble	Analysis	300.0		1	50 mL	50 mL	37413	10/20/22 23:02	CH	EET MID

Eurofins Midland

Lab Chronicle

Client: Carmona Resources
Project/Site: Copperhead 31-20 (10.17.22)

Job ID: 880-20552-1
SDG: Eddy County, New Mexico

Client Sample ID: H-2 (0-6")

Lab Sample ID: 880-20552-11

Date Collected: 10/19/22 00:00

Matrix: Solid

Date Received: 10/20/22 08:06

Prep Type	Batch Type	Batch Method	Run	Dil Factor	Initial Amount	Final Amount	Batch Number	Prepared or Analyzed	Analyst	Lab
Total/NA	Prep	5035			5.04 g	5 mL	37395	10/20/22 10:51	MNR	EET MID
Total/NA	Analysis	8021B		1	5 mL	5 mL	37351	10/21/22 05:32	MNR	EET MID
Total/NA	Analysis	Total BTEX		1			37499	10/21/22 13:44	SM	EET MID
Total/NA	Analysis	8015 NM		1			37483	10/21/22 12:35	SM	EET MID
Total/NA	Prep	8015NM Prep			10.01 g	10 mL	37356	10/20/22 08:22	DM	EET MID
Total/NA	Analysis	8015B NM		1	1 uL	1 uL	37363	10/20/22 16:45	SM	EET MID
Soluble	Leach	DI Leach			5.03 g	50 mL	37369	10/20/22 09:15	KS	EET MID
Soluble	Analysis	300.0		1	50 mL	50 mL	37413	10/20/22 23:07	CH	EET MID

Client Sample ID: H-3 (0-6")

Lab Sample ID: 880-20552-12

Date Collected: 10/19/22 00:00

Matrix: Solid

Date Received: 10/20/22 08:06

Prep Type	Batch Type	Batch Method	Run	Dil Factor	Initial Amount	Final Amount	Batch Number	Prepared or Analyzed	Analyst	Lab
Total/NA	Prep	5035			4.99 g	5 mL	37395	10/20/22 10:51	MNR	EET MID
Total/NA	Analysis	8021B		1	5 mL	5 mL	37351	10/21/22 05:53	MNR	EET MID
Total/NA	Analysis	Total BTEX		1			37499	10/21/22 13:44	SM	EET MID
Total/NA	Analysis	8015 NM		1			37483	10/21/22 12:35	SM	EET MID
Total/NA	Prep	8015NM Prep			10.03 g	10 mL	37356	10/20/22 08:22	DM	EET MID
Total/NA	Analysis	8015B NM		1	1 uL	1 uL	37363	10/20/22 17:05	SM	EET MID
Soluble	Leach	DI Leach			5.04 g	50 mL	37369	10/20/22 09:15	KS	EET MID
Soluble	Analysis	300.0		1	50 mL	50 mL	37413	10/20/22 23:21	CH	EET MID

Client Sample ID: H-4 (0-6")

Lab Sample ID: 880-20552-13

Date Collected: 10/19/22 00:00

Matrix: Solid

Date Received: 10/20/22 08:06

Prep Type	Batch Type	Batch Method	Run	Dil Factor	Initial Amount	Final Amount	Batch Number	Prepared or Analyzed	Analyst	Lab
Total/NA	Prep	5035			4.96 g	5 mL	37395	10/20/22 10:51	MNR	EET MID
Total/NA	Analysis	8021B		1	5 mL	5 mL	37351	10/21/22 06:13	MNR	EET MID
Total/NA	Analysis	Total BTEX		1			37499	10/21/22 13:44	SM	EET MID
Total/NA	Analysis	8015 NM		1			37483	10/21/22 12:35	SM	EET MID
Total/NA	Prep	8015NM Prep			10.01 g	10 mL	37356	10/20/22 08:22	DM	EET MID
Total/NA	Analysis	8015B NM		1	1 uL	1 uL	37363	10/20/22 17:26	SM	EET MID
Soluble	Leach	DI Leach			5.01 g	50 mL	37369	10/20/22 09:15	KS	EET MID
Soluble	Analysis	300.0		1	50 mL	50 mL	37413	10/20/22 23:26	CH	EET MID

Laboratory References:

EET MID = Eurofins Midland, 1211 W. Florida Ave, Midland, TX 79701, TEL (432)704-5440

Eurofins Midland

Accreditation/Certification Summary

Client: Carmona Resources
Project/Site: Copperhead 31-20 (10.17.22)

Job ID: 880-20552-1
SDG: Eddy County, New Mexico

Laboratory: Eurofins Midland

Unless otherwise noted, all analytes for this laboratory were covered under each accreditation/certification below.

Authority	Program	Identification Number	Expiration Date
Texas	NELAP	T104704400-22-24	06-30-23
The following analytes are included in this report, but the laboratory is not certified by the governing authority. This list may include analytes for which the agency does not offer certification.			
Analysis Method	Prep Method	Matrix	Analyte
300.0		Solid	Chloride
8015 NM		Solid	Total TPH
8015B NM	8015NM Prep	Solid	Diesel Range Organics (Over C10-C28)
8015B NM	8015NM Prep	Solid	Gasoline Range Organics (GRO)-C6-C10
8015B NM	8015NM Prep	Solid	Oil Range Organics (Over C28-C36)
8021B	5035	Solid	Benzene
8021B	5035	Solid	Ethylbenzene
8021B	5035	Solid	m-Xylene & p-Xylene
8021B	5035	Solid	o-Xylene
8021B	5035	Solid	Toluene
8021B	5035	Solid	Xylenes, Total
Total BTEX		Solid	Total BTEX

Method Summary

Client: Carmona Resources
Project/Site: Copperhead 31-20 (10.17.22)

Job ID: 880-20552-1
SDG: Eddy County, New Mexico

Method	Method Description	Protocol	Laboratory
8021B	Volatile Organic Compounds (GC)	SW846	EET MID
Total BTEX	Total BTEX Calculation	TAL SOP	EET MID
8015 NM	Diesel Range Organics (DRO) (GC)	SW846	EET MID
8015B NM	Diesel Range Organics (DRO) (GC)	SW846	EET MID
300.0	Anions, Ion Chromatography	MCAWW	EET MID
5035	Closed System Purge and Trap	SW846	EET MID
8015NM Prep	Microextraction	SW846	EET MID
DI Leach	Deionized Water Leaching Procedure	ASTM	EET MID

Protocol References:

ASTM = ASTM International

MCAWW = "Methods For Chemical Analysis Of Water And Wastes", EPA-600/4-79-020, March 1983 And Subsequent Revisions.

SW846 = "Test Methods For Evaluating Solid Waste, Physical/Chemical Methods", Third Edition, November 1986 And Its Updates.

TAL SOP = TestAmerica Laboratories, Standard Operating Procedure

Laboratory References:

EET MID = Eurofins Midland, 1211 W. Florida Ave, Midland, TX 79701, TEL (432)704-5440

Eurofins Midland

Sample Summary

Client: Carmona Resources
Project/Site: Copperhead 31-20 (10.17.22)

Job ID: 880-20552-1
SDG: Eddy County, New Mexico

Lab Sample ID	Client Sample ID	Matrix	Collected	Received
880-20552-1	S-1 (0-3")	Solid	10/19/22 00:00	10/20/22 08:06
880-20552-2	S-1 (6")	Solid	10/19/22 00:00	10/20/22 08:06
880-20552-3	S-1 (12")	Solid	10/19/22 00:00	10/20/22 08:06
880-20552-4	S-2 (0-3")	Solid	10/19/22 00:00	10/20/22 08:06
880-20552-5	S-2 (6")	Solid	10/19/22 00:00	10/20/22 08:06
880-20552-6	S-2 (12")	Solid	10/19/22 00:00	10/20/22 08:06
880-20552-7	S-3 (0-3")	Solid	10/19/22 00:00	10/20/22 08:06
880-20552-8	S-3 (6")	Solid	10/19/22 00:00	10/20/22 08:06
880-20552-9	S-3 (12")	Solid	10/19/22 00:00	10/20/22 08:06
880-20552-10	H-1 (0-6")	Solid	10/19/22 00:00	10/20/22 08:06
880-20552-11	H-2 (0-6")	Solid	10/19/22 00:00	10/20/22 08:06
880-20552-12	H-3 (0-6")	Solid	10/19/22 00:00	10/20/22 08:06
880-20552-13	H-4 (0-6")	Solid	10/19/22 00:00	10/20/22 08:06

- 1
- 2
- 3
- 4
- 5
- 6
- 7
- 8
- 9
- 10
- 11
- 12
- 13
- 14

Work Order No: 20552

10/24/2022

Project Manager	Conner Moehring	Bill to (if different)	Jacqui Harris
Company Name	Carmona Resources	Company Name	COG
Address	310 W Wall St Ste 415	Address	15 W London Rd
City, State ZIP	Midland, TX 79701	City, State ZIP	Loving, NM 88258
Phone	432-813-6823	Email	jacqui.harris@conocophillips.com

Work Order Comments	
Program: UST/PST <input type="checkbox"/> PRP <input type="checkbox"/> Brownfields <input type="checkbox"/> RC <input type="checkbox"/> Refund <input type="checkbox"/>	
State of Project:	
Reporting Level II <input type="checkbox"/> Level III <input type="checkbox"/> ST/UST <input type="checkbox"/> PRP <input type="checkbox"/> Level IV <input type="checkbox"/>	
Deliverables EDD <input type="checkbox"/> ADAPT <input type="checkbox"/> Other	

Project Name	Copperhead 31-20 (10 17 22)	Turn Around		Pres. Code	ANALYSIS REQUEST										Preservative Codes			
Project Number	1158	<input type="checkbox"/> Routine	<input checked="" type="checkbox"/> Rush													None NO	DI Water H ₂ O	
Project Location	Eddy County, New Mexico	Due Date														Cool Cool	MeOH Me	
Sampler's Name	GP		72 Hours													HCL HC	HNO ₃ HN	
PO #																H ₂ SO ₄ H ₂	NaOH Na	
SAMPLE RECEIPT	Temp Blank	Yes <input checked="" type="checkbox"/> No	Wet Ice	Yes <input checked="" type="checkbox"/> No												H ₃ PO ₄ HP		
Received Intact:	Yes <input checked="" type="checkbox"/> No	Thermometer ID														NaHSO ₄ NABIS		
Cooler Custody Seals.	Yes <input checked="" type="checkbox"/> No	Correction Factor														Na ₂ S ₂ O ₃ NaSO ₃		
Sample Custody Seals.	Yes <input checked="" type="checkbox"/> No	Temperature Reading														Zn Acetate+NaOH Zn		
Total Containers.		Corrected Temperature														NaOH+Ascorbic Acid SAPC		
Sample Identification	Date	Time	Soil	Water	Grab/Comp	# of Cont	BTX 8021B										Sample Comments	
S-1 (0-3")	10/19/2022		X		G	1	X	X	X								1-402	
S-1 (6")	10/19/2022		X		G	1	X	X	X									
S-1 (12")	10/19/2022		X		G	1	X	X	X									
S-2 (0-3")	10/19/2022		X		G	1	X	X	X									
S-2 (6")	10/19/2022		X		G	1	X	X	X									
S-2 (12")	10/19/2022		X		G	1	X	X	X									
S-3 (0-3")	10/19/2022		X		G	1	X	X	X									
S-3 (6")	10/19/2022		X		G	1	X	X	X									
S-3 (12")	10/19/2022		X		G	1	X	X	X									
H-1 (0-6")	10/19/2022		X		G	1	X	X	X									

Comments:



880-20552 Chain of Custody

Relinquished by (Signature)	Date/Time	Received by (Signature)	Date/Time
<i>Conner Moehring</i>	10/20/22	<i>Barbara</i>	10/20/22

Work Order Comments									
Program, UST/ST	<input type="checkbox"/> PRP	<input type="checkbox"/> Brownfields	<input type="checkbox"/> RC	<input type="checkbox"/> Superfund	<input type="checkbox"/>	<input type="checkbox"/>	<input type="checkbox"/>	<input type="checkbox"/>	<input type="checkbox"/>
State of Project:									
Reporting Level II	<input type="checkbox"/> Level III	<input type="checkbox"/> ST/UST	<input type="checkbox"/> RRP	<input type="checkbox"/> Level IV	<input type="checkbox"/>	<input type="checkbox"/>	<input type="checkbox"/>	<input type="checkbox"/>	<input type="checkbox"/>
Deliverables	EDD	<input type="checkbox"/>	ADAPT	<input type="checkbox"/>	Other	<input type="checkbox"/>	<input type="checkbox"/>	<input type="checkbox"/>	<input type="checkbox"/>

[illegible]

Date/Time

Page 1 of 2

Login Sample Receipt Checklist

Client: Carmona Resources

Job Number: 880-20552-1

SDG Number: Eddy County, New Mexico

Login Number: 20552

List Source: Eurofins Midland

List Number: 1

Creator: Rodriguez, Leticia

Question	Answer	Comment
The cooler's custody seal, if present, is intact.	N/A	
Sample custody seals, if present, are intact.	N/A	
The cooler or samples do not appear to have been compromised or tampered with.	True	
Samples were received on ice.	True	
Cooler Temperature is acceptable.	True	
Cooler Temperature is recorded.	True	
COC is present.	True	
COC is filled out in ink and legible.	True	
COC is filled out with all pertinent information.	True	
Is the Field Sampler's name present on COC?	True	
There are no discrepancies between the containers received and the COC.	True	
Samples are received within Holding Time (excluding tests with immediate HTs)	True	
Sample containers have legible labels.	True	
Containers are not broken or leaking.	True	
Sample collection date/times are provided.	True	
Appropriate sample containers are used.	True	
Sample bottles are completely filled.	True	
Sample Preservation Verified.	N/A	
There is sufficient vol. for all requested analyses, incl. any requested MS/MSDs	True	
Containers requiring zero headspace have no headspace or bubble is <6mm (1/4").	N/A	



PHONE (575) 393-2326 ° 101 E. MARLAND ° HOBBS, NM 88240

November 18, 2022

CONNER MOEHRING

CARMONA RESOURCES

310 W WALL ST SUITE 415

MIDLAND, TX 79701

RE: COPPERHEAD 31-20

Enclosed are the results of analyses for samples received by the laboratory on 11/17/22 15:15.

Cardinal Laboratories is accredited through Texas NELAP under certificate number T104704398-22-15. Accreditation applies to drinking water, non-potable water and solid and chemical materials. All accredited analytes are denoted by an asterisk (*). For a complete list of accredited analytes and matrices visit the TCEQ website at www.tceq.texas.gov/field/qa/lab_accred_certif.html.

Cardinal Laboratories is accredited through the State of Colorado Department of Public Health and Environment for:

Method EPA 552.2	Haloacetic Acids (HAA-5)
Method EPA 524.2	Total Trihalomethanes (TTHM)
Method EPA 524.4	Regulated VOCs (V1, V2, V3)

Accreditation applies to public drinking water matrices.

This report meets NELAP requirements and is made up of a cover page, analytical results, and a copy of the original chain-of-custody. If you have any questions concerning this report, please feel free to contact me.

Sincerely,

A handwritten signature in black ink that reads "Celey D. Keene". The signature is written in a cursive, flowing style.

Celey D. Keene

Lab Director/Quality Manager



PHONE (575) 393-2326 ° 101 E. MARLAND ° HOBBS, NM 88240

Analytical Results For:

CARMONA RESOURCES
 CONNER MOEHRING
 310 W WALL ST SUITE 415
 MIDLAND TX, 79701
 Fax To:

Received: 11/17/2022
 Reported: 11/18/2022
 Project Name: COPPERHEAD 31-20
 Project Number: 1158 (10.17.22)
 Project Location: COG - EDDY CO NM

Sampling Date: 11/17/2022
 Sampling Type: Soil
 Sampling Condition: Cool & Intact
 Sample Received By: Tamara Oldaker

Sample ID: CS - 1 (0.5') (H225444-01)

BTEX 8021B		mg/kg		Analyzed By: JH					
Analyte	Result	Reporting Limit	Analyzed	Method Blank	BS	% Recovery	True Value QC	RPD	Qualifier
Benzene*	<0.050	0.050	11/17/2022	ND	2.00	100	2.00	0.0805	
Toluene*	<0.050	0.050	11/17/2022	ND	2.15	108	2.00	1.55	
Ethylbenzene*	<0.050	0.050	11/17/2022	ND	1.99	99.5	2.00	1.61	
Total Xylenes*	<0.150	0.150	11/17/2022	ND	6.01	100	6.00	1.36	
Total BTEX	<0.300	0.300	11/17/2022	ND					

Surrogate: 4-Bromofluorobenzene (PID) 100 % 69.9-140

Chloride, SM4500Cl-B		mg/kg		Analyzed By: GM						
Analyte	Result	Reporting Limit	Analyzed	Method Blank	BS	% Recovery	True Value QC	RPD	Qualifier	
Chloride	<16.0	16.0	11/18/2022	ND	416	104	400	3.77		

TPH 8015M		mg/kg		Analyzed By: MS					
Analyte	Result	Reporting Limit	Analyzed	Method Blank	BS	% Recovery	True Value QC	RPD	Qualifier
GRO C6-C10*	<10.0	10.0	11/18/2022	ND	210	105	200	1.23	
DRO >C10-C28*	<10.0	10.0	11/18/2022	ND	210	105	200	3.03	
EXT DRO >C28-C36	<10.0	10.0	11/18/2022	ND					

Surrogate: 1-Chlorooctane 68.9 % 45.3-161

Surrogate: 1-Chlorooctadecane 74.3 % 46.3-178

Cardinal Laboratories

*=Accredited Analyte

PLEASE NOTE: Liability and Damages. Cardinal's liability and client's exclusive remedy for any claim arising, whether based in contract or tort, shall be limited to the amount paid by client for analyses. All claims, including those for negligence and any other cause whatsoever shall be deemed waived unless made in writing and received by Cardinal within thirty (30) days after completion of the applicable service. In no event shall Cardinal be liable for incidental or consequential damages, including, without limitation, business interruptions, loss of use, or loss of profits incurred by client, its subsidiaries, affiliates or successors arising out of or related to the performance of the services hereunder by Cardinal, regardless of whether such claim is based upon any of the above stated reasons or otherwise. Results relate only to the samples identified above. This report shall not be reproduced except in full with written approval of Cardinal Laboratories.

Celey D. Keene, Lab Director/Quality Manager



PHONE (575) 393-2326 ° 101 E. MARLAND ° HOBBS, NM 88240

Analytical Results For:

CARMONA RESOURCES
 CONNER MOEHRING
 310 W WALL ST SUITE 415
 MIDLAND TX, 79701
 Fax To:

Received: 11/17/2022
 Reported: 11/18/2022
 Project Name: COPPERHEAD 31-20
 Project Number: 1158 (10.17.22)
 Project Location: COG - EDDY CO NM

Sampling Date: 11/17/2022
 Sampling Type: Soil
 Sampling Condition: Cool & Intact
 Sample Received By: Tamara Oldaker

Sample ID: CS - 2 (0.5') (H225444-02)

BTEx 8021B		mg/kg		Analyzed By: JH						
Analyte	Result	Reporting Limit	Analyzed	Method Blank	BS	% Recovery	True Value QC	RPD	Qualifier	
Benzene*	<0.050	0.050	11/17/2022	ND	2.00	100	2.00	0.0805		
Toluene*	<0.050	0.050	11/17/2022	ND	2.15	108	2.00	1.55		
Ethylbenzene*	<0.050	0.050	11/17/2022	ND	1.99	99.5	2.00	1.61		
Total Xylenes*	<0.150	0.150	11/17/2022	ND	6.01	100	6.00	1.36		
Total BTEx	<0.300	0.300	11/17/2022	ND						

Surrogate: 4-Bromofluorobenzene (PID) 99.1 % 69.9-140

Chloride, SM4500CI-B		mg/kg		Analyzed By: GM					
Analyte	Result	Reporting Limit	Analyzed	Method Blank	BS	% Recovery	True Value QC	RPD	Qualifier
Chloride	32.0	16.0	11/18/2022	ND	416	104	400	3.77	

TPH 8015M		mg/kg		Analyzed By: MS					
Analyte	Result	Reporting Limit	Analyzed	Method Blank	BS	% Recovery	True Value QC	RPD	Qualifier
GRO C6-C10*	<10.0	10.0	11/18/2022	ND	210	105	200	1.23	
DRO >C10-C28*	<10.0	10.0	11/18/2022	ND	210	105	200	3.03	
EXT DRO >C28-C36	<10.0	10.0	11/18/2022	ND					

Surrogate: 1-Chlorooctane 86.1 % 45.3-161

Surrogate: 1-Chlorooctadecane 89.3 % 46.3-178

Cardinal Laboratories

*=Accredited Analyte

PLEASE NOTE: Liability and Damages. Cardinal's liability and client's exclusive remedy for any claim arising, whether based in contract or tort, shall be limited to the amount paid by client for analyses. All claims, including those for negligence and any other cause whatsoever shall be deemed waived unless made in writing and received by Cardinal within thirty (30) days after completion of the applicable service. In no event shall Cardinal be liable for incidental or consequential damages, including, without limitation, business interruptions, loss of use, or loss of profits incurred by client, its subsidiaries, affiliates or successors arising out of or related to the performance of the services hereunder by Cardinal, regardless of whether such claim is based upon any of the above stated reasons or otherwise. Results relate only to the samples identified above. This report shall not be reproduced except in full with written approval of Cardinal Laboratories.

Celey D. Keene, Lab Director/Quality Manager



PHONE (575) 393-2326 ° 101 E. MARLAND ° HOBBS, NM 88240

Analytical Results For:

CARMONA RESOURCES
 CONNER MOEHRING
 310 W WALL ST SUITE 415
 MIDLAND TX, 79701
 Fax To:

Received: 11/17/2022
 Reported: 11/18/2022
 Project Name: COPPERHEAD 31-20
 Project Number: 1158 (10.17.22)
 Project Location: COG - EDDY CO NM

Sampling Date: 11/17/2022
 Sampling Type: Soil
 Sampling Condition: Cool & Intact
 Sample Received By: Tamara Oldaker

Sample ID: CS - 3 (0.5') (H225444-03)

BTEx 8021B		mg/kg		Analyzed By: JH						
Analyte	Result	Reporting Limit	Analyzed	Method Blank	BS	% Recovery	True Value QC	RPD	Qualifier	
Benzene*	<0.050	0.050	11/17/2022	ND	2.00	100	2.00	0.0805		
Toluene*	<0.050	0.050	11/17/2022	ND	2.15	108	2.00	1.55		
Ethylbenzene*	<0.050	0.050	11/17/2022	ND	1.99	99.5	2.00	1.61		
Total Xylenes*	<0.150	0.150	11/17/2022	ND	6.01	100	6.00	1.36		
Total BTEx	<0.300	0.300	11/17/2022	ND						

Surrogate: 4-Bromofluorobenzene (PID) 98.3 % 69.9-140

Chloride, SM4500CI-B		mg/kg		Analyzed By: GM						
Analyte	Result	Reporting Limit	Analyzed	Method Blank	BS	% Recovery	True Value QC	RPD	Qualifier	
Chloride	16.0	16.0	11/18/2022	ND	416	104	400	3.77		

TPH 8015M		mg/kg		Analyzed By: MS					
Analyte	Result	Reporting Limit	Analyzed	Method Blank	BS	% Recovery	True Value QC	RPD	Qualifier
GRO C6-C10*	<10.0	10.0	11/18/2022	ND	210	105	200	1.23	
DRO >C10-C28*	<10.0	10.0	11/18/2022	ND	210	105	200	3.03	
EXT DRO >C28-C36	<10.0	10.0	11/18/2022	ND					

Surrogate: 1-Chlorooctane 67.6 % 45.3-161

Surrogate: 1-Chlorooctadecane 70.8 % 46.3-178

Cardinal Laboratories

*=Accredited Analyte

PLEASE NOTE: Liability and Damages. Cardinal's liability and client's exclusive remedy for any claim arising, whether based in contract or tort, shall be limited to the amount paid by client for analyses. All claims, including those for negligence and any other cause whatsoever shall be deemed waived unless made in writing and received by Cardinal within thirty (30) days after completion of the applicable service. In no event shall Cardinal be liable for incidental or consequential damages, including, without limitation, business interruptions, loss of use, or loss of profits incurred by client, its subsidiaries, affiliates or successors arising out of or related to the performance of the services hereunder by Cardinal, regardless of whether such claim is based upon any of the above stated reasons or otherwise. Results relate only to the samples identified above. This report shall not be reproduced except in full with written approval of Cardinal Laboratories.

Celey D. Keene, Lab Director/Quality Manager



PHONE (575) 393-2326 ° 101 E. MARLAND ° HOBBS, NM 88240

Analytical Results For:

CARMONA RESOURCES
 CONNER MOEHRING
 310 W WALL ST SUITE 415
 MIDLAND TX, 79701
 Fax To:

Received: 11/17/2022
 Reported: 11/18/2022
 Project Name: COPPERHEAD 31-20
 Project Number: 1158 (10.17.22)
 Project Location: COG - EDDY CO NM

Sampling Date: 11/17/2022
 Sampling Type: Soil
 Sampling Condition: Cool & Intact
 Sample Received By: Tamara Oldaker

Sample ID: CS - 4 (0.5') (H225444-04)

BTX 8021B		mg/kg		Analyzed By: JH					
Analyte	Result	Reporting Limit	Analyzed	Method Blank	BS	% Recovery	True Value QC	RPD	Qualifier
Benzene*	<0.050	0.050	11/17/2022	ND	2.00	100	2.00	0.0805	
Toluene*	<0.050	0.050	11/17/2022	ND	2.15	108	2.00	1.55	
Ethylbenzene*	<0.050	0.050	11/17/2022	ND	1.99	99.5	2.00	1.61	
Total Xylenes*	<0.150	0.150	11/17/2022	ND	6.01	100	6.00	1.36	
Total BTX	<0.300	0.300	11/17/2022	ND					

Surrogate: 4-Bromofluorobenzene (PID) 97.9 % 69.9-140

Chloride, SM4500CI-B		mg/kg		Analyzed By: GM						
Analyte	Result	Reporting Limit	Analyzed	Method Blank	BS	% Recovery	True Value QC	RPD	Qualifier	
Chloride	16.0	16.0	11/18/2022	ND	416	104	400	3.77		

TPH 8015M		mg/kg		Analyzed By: MS					
Analyte	Result	Reporting Limit	Analyzed	Method Blank	BS	% Recovery	True Value QC	RPD	Qualifier
GRO C6-C10*	<10.0	10.0	11/18/2022	ND	210	105	200	1.23	
DRO >C10-C28*	<10.0	10.0	11/18/2022	ND	210	105	200	3.03	
EXT DRO >C28-C36	<10.0	10.0	11/18/2022	ND					

Surrogate: 1-Chlorooctane 74.2 % 45.3-161

Surrogate: 1-Chlorooctadecane 74.6 % 46.3-178

Cardinal Laboratories

*=Accredited Analyte

PLEASE NOTE: Liability and Damages. Cardinal's liability and client's exclusive remedy for any claim arising, whether based in contract or tort, shall be limited to the amount paid by client for analyses. All claims, including those for negligence and any other cause whatsoever shall be deemed waived unless made in writing and received by Cardinal within thirty (30) days after completion of the applicable service. In no event shall Cardinal be liable for incidental or consequential damages, including, without limitation, business interruptions, loss of use, or loss of profits incurred by client, its subsidiaries, affiliates or successors arising out of or related to the performance of the services hereunder by Cardinal, regardless of whether such claim is based upon any of the above stated reasons or otherwise. Results relate only to the samples identified above. This report shall not be reproduced except in full with written approval of Cardinal Laboratories.

Celey D. Keene, Lab Director/Quality Manager



PHONE (575) 393-2326 • 101 E. MARLAND • HOBBS, NM 88240

Analytical Results For:

CARMONA RESOURCES
 CONNER MOEHRING
 310 W WALL ST SUITE 415
 MIDLAND TX, 79701
 Fax To:

Received: 11/17/2022
 Reported: 11/18/2022
 Project Name: COPPERHEAD 31-20
 Project Number: 1158 (10.17.22)
 Project Location: COG - EDDY CO NM

Sampling Date: 11/17/2022
 Sampling Type: Soil
 Sampling Condition: Cool & Intact
 Sample Received By: Tamara Oldaker

Sample ID: SW - 1 (0.5') (H225444-05)

BTEX 8021B		mg/kg		Analyzed By: JH					
Analyte	Result	Reporting Limit	Analyzed	Method Blank	BS	% Recovery	True Value QC	RPD	Qualifier
Benzene*	<0.050	0.050	11/17/2022	ND	2.00	100	2.00	0.0805	
Toluene*	<0.050	0.050	11/17/2022	ND	2.15	108	2.00	1.55	
Ethylbenzene*	<0.050	0.050	11/17/2022	ND	1.99	99.5	2.00	1.61	
Total Xylenes*	<0.150	0.150	11/17/2022	ND	6.01	100	6.00	1.36	
Total BTEX	<0.300	0.300	11/17/2022	ND					

Surrogate: 4-Bromofluorobenzene (PID) 99.5 % 69.9-140

Chloride, SM4500Cl-B		mg/kg		Analyzed By: GM						
Analyte	Result	Reporting Limit	Analyzed	Method Blank	BS	% Recovery	True Value QC	RPD	Qualifier	
Chloride	<16.0	16.0	11/18/2022	ND	416	104	400	3.77		

TPH 8015M		mg/kg		Analyzed By: MS					
Analyte	Result	Reporting Limit	Analyzed	Method Blank	BS	% Recovery	True Value QC	RPD	Qualifier
GRO C6-C10*	<10.0	10.0	11/18/2022	ND	246	123	200	17.2	
DRO >C10-C28*	15.9	10.0	11/18/2022	ND	221	110	200	14.6	
EXT DRO >C28-C36	<10.0	10.0	11/18/2022	ND					

Surrogate: 1-Chlorooctane 81.1 % 45.3-161

Surrogate: 1-Chlorooctadecane 85.2 % 46.3-178

Cardinal Laboratories

*=Accredited Analyte

PLEASE NOTE: Liability and Damages. Cardinal's liability and client's exclusive remedy for any claim arising, whether based in contract or tort, shall be limited to the amount paid by client for analyses. All claims, including those for negligence and any other cause whatsoever shall be deemed waived unless made in writing and received by Cardinal within thirty (30) days after completion of the applicable service. In no event shall Cardinal be liable for incidental or consequential damages, including, without limitation, business interruptions, loss of use, or loss of profits incurred by client, its subsidiaries, affiliates or successors arising out of or related to the performance of the services hereunder by Cardinal, regardless of whether such claim is based upon any of the above stated reasons or otherwise. Results relate only to the samples identified above. This report shall not be reproduced except in full with written approval of Cardinal Laboratories.

Celey D. Keene, Lab Director/Quality Manager



PHONE (575) 393-2326 ° 101 E. MARLAND ° HOBBS, NM 88240

Analytical Results For:

CARMONA RESOURCES
 CONNER MOEHRING
 310 W WALL ST SUITE 415
 MIDLAND TX, 79701
 Fax To:

Received: 11/17/2022
 Reported: 11/18/2022
 Project Name: COPPERHEAD 31-20
 Project Number: 1158 (10.17.22)
 Project Location: COG - EDDY CO NM

Sampling Date: 11/17/2022
 Sampling Type: Soil
 Sampling Condition: Cool & Intact
 Sample Received By: Tamara Oldaker

Sample ID: SW - 2 (0.5') (H225444-06)

BTX 8021B		mg/kg	Analyzed By: JH						
Analyte	Result	Reporting Limit	Analyzed	Method Blank	BS	% Recovery	True Value QC	RPD	Qualifier
Benzene*	<0.050	0.050	11/17/2022	ND	2.00	100	2.00	0.0805	
Toluene*	<0.050	0.050	11/17/2022	ND	2.15	108	2.00	1.55	
Ethylbenzene*	<0.050	0.050	11/17/2022	ND	1.99	99.5	2.00	1.61	
Total Xylenes*	<0.150	0.150	11/17/2022	ND	6.01	100	6.00	1.36	
Total BTX	<0.300	0.300	11/17/2022	ND					

Surrogate: 4-Bromofluorobenzene (PID) 99.7 % 69.9-140

Chloride, SM4500CI-B		mg/kg	Analyzed By: GM						
Analyte	Result	Reporting Limit	Analyzed	Method Blank	BS	% Recovery	True Value QC	RPD	Qualifier
Chloride	<16.0	16.0	11/18/2022	ND	416	104	400	3.77	

TPH 8015M		mg/kg	Analyzed By: MS						
Analyte	Result	Reporting Limit	Analyzed	Method Blank	BS	% Recovery	True Value QC	RPD	Qualifier
GRO C6-C10*	<10.0	10.0	11/18/2022	ND	210	105	200	1.23	
DRO >C10-C28*	<10.0	10.0	11/18/2022	ND	210	105	200	3.03	
EXT DRO >C28-C36	<10.0	10.0	11/18/2022	ND					

Surrogate: 1-Chlorooctane 69.0 % 45.3-161

Surrogate: 1-Chlorooctadecane 71.4 % 46.3-178

Cardinal Laboratories

*=Accredited Analyte

PLEASE NOTE: Liability and Damages. Cardinal's liability and client's exclusive remedy for any claim arising, whether based in contract or tort, shall be limited to the amount paid by client for analyses. All claims, including those for negligence and any other cause whatsoever shall be deemed waived unless made in writing and received by Cardinal within thirty (30) days after completion of the applicable service. In no event shall Cardinal be liable for incidental or consequential damages, including, without limitation, business interruptions, loss of use, or loss of profits incurred by client, its subsidiaries, affiliates or successors arising out of or related to the performance of the services hereunder by Cardinal, regardless of whether such claim is based upon any of the above stated reasons or otherwise. Results relate only to the samples identified above. This report shall not be reproduced except in full with written approval of Cardinal Laboratories.

Celey D. Keene, Lab Director/Quality Manager



PHONE (575) 393-2326 ° 101 E. MARLAND ° HOBBS, NM 88240

Analytical Results For:

CARMONA RESOURCES
 CONNER MOEHRING
 310 W WALL ST SUITE 415
 MIDLAND TX, 79701
 Fax To:

Received: 11/17/2022
 Reported: 11/18/2022
 Project Name: COPPERHEAD 31-20
 Project Number: 1158 (10.17.22)
 Project Location: COG - EDDY CO NM

Sampling Date: 11/17/2022
 Sampling Type: Soil
 Sampling Condition: Cool & Intact
 Sample Received By: Tamara Oldaker

Sample ID: SW - 3 (0.5') (H225444-07)

BTX 8021B		mg/kg		Analyzed By: JH					
Analyte	Result	Reporting Limit	Analyzed	Method Blank	BS	% Recovery	True Value QC	RPD	Qualifier
Benzene*	<0.050	0.050	11/17/2022	ND	2.00	100	2.00	0.0805	
Toluene*	<0.050	0.050	11/17/2022	ND	2.15	108	2.00	1.55	
Ethylbenzene*	<0.050	0.050	11/17/2022	ND	1.99	99.5	2.00	1.61	
Total Xylenes*	<0.150	0.150	11/17/2022	ND	6.01	100	6.00	1.36	
Total BTX	<0.300	0.300	11/17/2022	ND					

Surrogate: 4-Bromofluorobenzene (PID) 99.5 % 69.9-140

Chloride, SM4500CI-B		mg/kg		Analyzed By: GM					
Analyte	Result	Reporting Limit	Analyzed	Method Blank	BS	% Recovery	True Value QC	RPD	Qualifier
Chloride	<16.0	16.0	11/18/2022	ND	416	104	400	3.77	

TPH 8015M		mg/kg		Analyzed By: MS					
Analyte	Result	Reporting Limit	Analyzed	Method Blank	BS	% Recovery	True Value QC	RPD	Qualifier
GRO C6-C10*	<10.0	10.0	11/18/2022	ND	210	105	200	1.23	
DRO >C10-C28*	<10.0	10.0	11/18/2022	ND	210	105	200	3.03	
EXT DRO >C28-C36	<10.0	10.0	11/18/2022	ND					

Surrogate: 1-Chlorooctane 71.4 % 45.3-161

Surrogate: 1-Chlorooctadecane 72.4 % 46.3-178

Cardinal Laboratories

*=Accredited Analyte

PLEASE NOTE: Liability and Damages. Cardinal's liability and client's exclusive remedy for any claim arising, whether based in contract or tort, shall be limited to the amount paid by client for analyses. All claims, including those for negligence and any other cause whatsoever shall be deemed waived unless made in writing and received by Cardinal within thirty (30) days after completion of the applicable service. In no event shall Cardinal be liable for incidental or consequential damages, including, without limitation, business interruptions, loss of use, or loss of profits incurred by client, its subsidiaries, affiliates or successors arising out of or related to the performance of the services hereunder by Cardinal, regardless of whether such claim is based upon any of the above stated reasons or otherwise. Results relate only to the samples identified above. This report shall not be reproduced except in full with written approval of Cardinal Laboratories.

Celey D. Keene, Lab Director/Quality Manager



PHONE (575) 393-2326 ° 101 E. MARLAND ° HOBBS, NM 88240

Analytical Results For:

CARMONA RESOURCES
 CONNER MOEHRING
 310 W WALL ST SUITE 415
 MIDLAND TX, 79701
 Fax To:

Received: 11/17/2022
 Reported: 11/18/2022
 Project Name: COPPERHEAD 31-20
 Project Number: 1158 (10.17.22)
 Project Location: COG - EDDY CO NM

Sampling Date: 11/17/2022
 Sampling Type: Soil
 Sampling Condition: Cool & Intact
 Sample Received By: Tamara Oldaker

Sample ID: SW - 4 (0.5') (H225444-08)

BTX 8021B			mg/kg		Analyzed By: JH				
Analyte	Result	Reporting Limit	Analyzed	Method Blank	BS	% Recovery	True Value QC	RPD	Qualifier
Benzene*	<0.050	0.050	11/17/2022	ND	2.00	100	2.00	0.0805	
Toluene*	<0.050	0.050	11/17/2022	ND	2.15	108	2.00	1.55	
Ethylbenzene*	<0.050	0.050	11/17/2022	ND	1.99	99.5	2.00	1.61	
Total Xylenes*	<0.150	0.150	11/17/2022	ND	6.01	100	6.00	1.36	
Total BTX	<0.300	0.300	11/17/2022	ND					

Surrogate: 4-Bromofluorobenzene (PID) 95.2 % 69.9-140

Chloride, SM4500CI-B			mg/kg		Analyzed By: GM				
Analyte	Result	Reporting Limit	Analyzed	Method Blank	BS	% Recovery	True Value QC	RPD	Qualifier
Chloride	16.0	16.0	11/18/2022	ND	416	104	400	3.77	

TPH 8015M			mg/kg		Analyzed By: MS				
Analyte	Result	Reporting Limit	Analyzed	Method Blank	BS	% Recovery	True Value QC	RPD	Qualifier
GRO C6-C10*	<10.0	10.0	11/18/2022	ND	210	105	200	1.23	
DRO >C10-C28*	18.8	10.0	11/18/2022	ND	210	105	200	3.03	
EXT DRO >C28-C36	<10.0	10.0	11/18/2022	ND					

Surrogate: 1-Chlorooctane 81.5 % 45.3-161

Surrogate: 1-Chlorooctadecane 84.6 % 46.3-178

Cardinal Laboratories

*=Accredited Analyte

PLEASE NOTE: Liability and Damages. Cardinal's liability and client's exclusive remedy for any claim arising, whether based in contract or tort, shall be limited to the amount paid by client for analyses. All claims, including those for negligence and any other cause whatsoever shall be deemed waived unless made in writing and received by Cardinal within thirty (30) days after completion of the applicable service. In no event shall Cardinal be liable for incidental or consequential damages, including, without limitation, business interruptions, loss of use, or loss of profits incurred by client, its subsidiaries, affiliates or successors arising out of or related to the performance of the services hereunder by Cardinal, regardless of whether such claim is based upon any of the above stated reasons or otherwise. Results relate only to the samples identified above. This report shall not be reproduced except in full with written approval of Cardinal Laboratories.

Celey D. Keene, Lab Director/Quality Manager



PHONE (575) 393-2326 ° 101 E. MARLAND ° HOBBS, NM 88240

Analytical Results For:

CARMONA RESOURCES
 CONNER MOEHRING
 310 W WALL ST SUITE 415
 MIDLAND TX, 79701
 Fax To:

Received: 11/17/2022
 Reported: 11/18/2022
 Project Name: COPPERHEAD 31-20
 Project Number: 1158 (10.17.22)
 Project Location: COG - EDDY CO NM

Sampling Date: 11/17/2022
 Sampling Type: Soil
 Sampling Condition: Cool & Intact
 Sample Received By: Tamara Oldaker

Sample ID: SW - 5 (0.5') (H225444-09)

BTEx 8021B		mg/kg		Analyzed By: JH					
Analyte	Result	Reporting Limit	Analyzed	Method Blank	BS	% Recovery	True Value QC	RPD	Qualifier
Benzene*	<0.050	0.050	11/17/2022	ND	2.00	100	2.00	0.0805	
Toluene*	<0.050	0.050	11/17/2022	ND	2.15	108	2.00	1.55	
Ethylbenzene*	<0.050	0.050	11/17/2022	ND	1.99	99.5	2.00	1.61	
Total Xylenes*	<0.150	0.150	11/17/2022	ND	6.01	100	6.00	1.36	
Total BTEX	<0.300	0.300	11/17/2022	ND					

Surrogate: 4-Bromofluorobenzene (PID) 99.0 % 69.9-140

Chloride, SM4500Cl-B		mg/kg		Analyzed By: GM						
Analyte	Result	Reporting Limit	Analyzed	Method Blank	BS	% Recovery	True Value QC	RPD	Qualifier	
Chloride	32.0	16.0	11/18/2022	ND	416	104	400	3.77		

TPH 8015M		mg/kg		Analyzed By: MS					
Analyte	Result	Reporting Limit	Analyzed	Method Blank	BS	% Recovery	True Value QC	RPD	Qualifier
GRO C6-C10*	<10.0	10.0	11/18/2022	ND	210	105	200	1.23	
DRO >C10-C28*	<10.0	10.0	11/18/2022	ND	210	105	200	3.03	
EXT DRO >C28-C36	<10.0	10.0	11/18/2022	ND					

Surrogate: 1-Chlorooctane 77.8 % 45.3-161

Surrogate: 1-Chlorooctadecane 83.0 % 46.3-178

Cardinal Laboratories

*=Accredited Analyte

PLEASE NOTE: Liability and Damages. Cardinal's liability and client's exclusive remedy for any claim arising, whether based in contract or tort, shall be limited to the amount paid by client for analyses. All claims, including those for negligence and any other cause whatsoever shall be deemed waived unless made in writing and received by Cardinal within thirty (30) days after completion of the applicable service. In no event shall Cardinal be liable for incidental or consequential damages, including, without limitation, business interruptions, loss of use, or loss of profits incurred by client, its subsidiaries, affiliates or successors arising out of or related to the performance of the services hereunder by Cardinal, regardless of whether such claim is based upon any of the above stated reasons or otherwise. Results relate only to the samples identified above. This report shall not be reproduced except in full with written approval of Cardinal Laboratories.

Celey D. Keene, Lab Director/Quality Manager



PHONE (575) 393-2326 ° 101 E. MARLAND ° HOBBS, NM 88240

Analytical Results For:

CARMONA RESOURCES
 CONNER MOEHRING
 310 W WALL ST SUITE 415
 MIDLAND TX, 79701
 Fax To:

Received: 11/17/2022
 Reported: 11/18/2022
 Project Name: COPPERHEAD 31-20
 Project Number: 1158 (10.17.22)
 Project Location: COG - EDDY CO NM

Sampling Date: 11/17/2022
 Sampling Type: Soil
 Sampling Condition: Cool & Intact
 Sample Received By: Tamara Oldaker

Sample ID: SW - 6 (0.5') (H225444-10)

BTX 8021B		mg/kg		Analyzed By: JH					
Analyte	Result	Reporting Limit	Analyzed	Method Blank	BS	% Recovery	True Value QC	RPD	Qualifier
Benzene*	<0.050	0.050	11/17/2022	ND	2.00	100	2.00	0.0805	
Toluene*	<0.050	0.050	11/17/2022	ND	2.15	108	2.00	1.55	
Ethylbenzene*	<0.050	0.050	11/17/2022	ND	1.99	99.5	2.00	1.61	
Total Xylenes*	<0.150	0.150	11/17/2022	ND	6.01	100	6.00	1.36	
Total BTX	<0.300	0.300	11/17/2022	ND					

Surrogate: 4-Bromofluorobenzene (PID) 99.2 % 69.9-140

Chloride, SM4500CI-B		mg/kg		Analyzed By: GM					
Analyte	Result	Reporting Limit	Analyzed	Method Blank	BS	% Recovery	True Value QC	RPD	Qualifier
Chloride	<16.0	16.0	11/18/2022	ND	416	104	400	3.77	

TPH 8015M		mg/kg		Analyzed By: MS					
Analyte	Result	Reporting Limit	Analyzed	Method Blank	BS	% Recovery	True Value QC	RPD	Qualifier
GRO C6-C10*	<10.0	10.0	11/18/2022	ND	210	105	200	1.23	
DRO >C10-C28*	<10.0	10.0	11/18/2022	ND	210	105	200	3.03	
EXT DRO >C28-C36	<10.0	10.0	11/18/2022	ND					

Surrogate: 1-Chlorooctane 72.7 % 45.3-161

Surrogate: 1-Chlorooctadecane 76.7 % 46.3-178

Cardinal Laboratories

*=Accredited Analyte

PLEASE NOTE: Liability and Damages. Cardinal's liability and client's exclusive remedy for any claim arising, whether based in contract or tort, shall be limited to the amount paid by client for analyses. All claims, including those for negligence and any other cause whatsoever shall be deemed waived unless made in writing and received by Cardinal within thirty (30) days after completion of the applicable service. In no event shall Cardinal be liable for incidental or consequential damages, including, without limitation, business interruptions, loss of use, or loss of profits incurred by client, its subsidiaries, affiliates or successors arising out of or related to the performance of the services hereunder by Cardinal, regardless of whether such claim is based upon any of the above stated reasons or otherwise. Results relate only to the samples identified above. This report shall not be reproduced except in full with written approval of Cardinal Laboratories.

Celey D. Keene, Lab Director/Quality Manager



PHONE (575) 393-2326 ° 101 E. MARLAND ° HOBBS, NM 88240

Analytical Results For:

CARMONA RESOURCES
 CONNER MOEHRING
 310 W WALL ST SUITE 415
 MIDLAND TX, 79701
 Fax To:

Received: 11/17/2022
 Reported: 11/18/2022
 Project Name: COPPERHEAD 31-20
 Project Number: 1158 (10.17.22)
 Project Location: COG - EDDY CO NM

Sampling Date: 11/17/2022
 Sampling Type: Soil
 Sampling Condition: Cool & Intact
 Sample Received By: Tamara Oldaker

Sample ID: SW - 7 (0.5') (H225444-11)

BTX 8021B		mg/kg		Analyzed By: JH					
Analyte	Result	Reporting Limit	Analyzed	Method Blank	BS	% Recovery	True Value QC	RPD	Qualifier
Benzene*	<0.050	0.050	11/17/2022	ND	2.00	100	2.00	0.0805	
Toluene*	<0.050	0.050	11/17/2022	ND	2.15	108	2.00	1.55	
Ethylbenzene*	<0.050	0.050	11/17/2022	ND	1.99	99.5	2.00	1.61	
Total Xylenes*	<0.150	0.150	11/17/2022	ND	6.01	100	6.00	1.36	
Total BTX	<0.300	0.300	11/17/2022	ND					

Surrogate: 4-Bromofluorobenzene (PID) 99.0 % 69.9-140

Chloride, SM4500CI-B		mg/kg		Analyzed By: GM					
Analyte	Result	Reporting Limit	Analyzed	Method Blank	BS	% Recovery	True Value QC	RPD	Qualifier
Chloride	<16.0	16.0	11/18/2022	ND	416	104	400	3.77	

TPH 8015M		mg/kg		Analyzed By: MS					
Analyte	Result	Reporting Limit	Analyzed	Method Blank	BS	% Recovery	True Value QC	RPD	Qualifier
GRO C6-C10*	<10.0	10.0	11/18/2022	ND	246	123	200	17.2	
DRO >C10-C28*	<10.0	10.0	11/18/2022	ND	221	110	200	14.6	
EXT DRO >C28-C36	<10.0	10.0	11/18/2022	ND					

Surrogate: 1-Chlorooctane 106 % 45.3-161

Surrogate: 1-Chlorooctadecane 116 % 46.3-178

Cardinal Laboratories

*=Accredited Analyte

PLEASE NOTE: Liability and Damages. Cardinal's liability and client's exclusive remedy for any claim arising, whether based in contract or tort, shall be limited to the amount paid by client for analyses. All claims, including those for negligence and any other cause whatsoever shall be deemed waived unless made in writing and received by Cardinal within thirty (30) days after completion of the applicable service. In no event shall Cardinal be liable for incidental or consequential damages, including, without limitation, business interruptions, loss of use, or loss of profits incurred by client, its subsidiaries, affiliates or successors arising out of or related to the performance of the services hereunder by Cardinal, regardless of whether such claim is based upon any of the above stated reasons or otherwise. Results relate only to the samples identified above. This report shall not be reproduced except in full with written approval of Cardinal Laboratories.

Celey D. Keene, Lab Director/Quality Manager



PHONE (575) 393-2326 ° 101 E. MARLAND ° HOBBS, NM 88240

Analytical Results For:

CARMONA RESOURCES
 CONNER MOEHRING
 310 W WALL ST SUITE 415
 MIDLAND TX, 79701
 Fax To:

Received: 11/17/2022
 Reported: 11/18/2022
 Project Name: COPPERHEAD 31-20
 Project Number: 1158 (10.17.22)
 Project Location: COG - EDDY CO NM

Sampling Date: 11/17/2022
 Sampling Type: Soil
 Sampling Condition: Cool & Intact
 Sample Received By: Tamara Oldaker

Sample ID: SW - 8 (0.5') (H225444-12)

BTX 8021B		mg/kg		Analyzed By: JH					
Analyte	Result	Reporting Limit	Analyzed	Method Blank	BS	% Recovery	True Value QC	RPD	Qualifier
Benzene*	<0.050	0.050	11/17/2022	ND	2.00	100	2.00	0.0805	
Toluene*	<0.050	0.050	11/17/2022	ND	2.15	108	2.00	1.55	
Ethylbenzene*	<0.050	0.050	11/17/2022	ND	1.99	99.5	2.00	1.61	
Total Xylenes*	<0.150	0.150	11/17/2022	ND	6.01	100	6.00	1.36	
Total BTX	<0.300	0.300	11/17/2022	ND					

Surrogate: 4-Bromofluorobenzene (PID) 97.9 % 69.9-140

Chloride, SM4500CI-B		mg/kg		Analyzed By: GM					
Analyte	Result	Reporting Limit	Analyzed	Method Blank	BS	% Recovery	True Value QC	RPD	Qualifier
Chloride	<16.0	16.0	11/18/2022	ND	416	104	400	3.77	

TPH 8015M		mg/kg		Analyzed By: MS					
Analyte	Result	Reporting Limit	Analyzed	Method Blank	BS	% Recovery	True Value QC	RPD	Qualifier
GRO C6-C10*	<10.0	10.0	11/18/2022	ND	246	123	200	17.2	
DRO >C10-C28*	10.2	10.0	11/18/2022	ND	221	110	200	14.6	
EXT DRO >C28-C36	<10.0	10.0	11/18/2022	ND					

Surrogate: 1-Chlorooctane 83.5 % 45.3-161

Surrogate: 1-Chlorooctadecane 88.2 % 46.3-178

Cardinal Laboratories

*=Accredited Analyte

PLEASE NOTE: Liability and Damages. Cardinal's liability and client's exclusive remedy for any claim arising, whether based in contract or tort, shall be limited to the amount paid by client for analyses. All claims, including those for negligence and any other cause whatsoever shall be deemed waived unless made in writing and received by Cardinal within thirty (30) days after completion of the applicable service. In no event shall Cardinal be liable for incidental or consequential damages, including, without limitation, business interruptions, loss of use, or loss of profits incurred by client, its subsidiaries, affiliates or successors arising out of or related to the performance of the services hereunder by Cardinal, regardless of whether such claim is based upon any of the above stated reasons or otherwise. Results relate only to the samples identified above. This report shall not be reproduced except in full with written approval of Cardinal Laboratories.

Celey D. Keene, Lab Director/Quality Manager



PHONE (575) 393-2326 ° 101 E. MARLAND ° HOBBS, NM 88240

Analytical Results For:

CARMONA RESOURCES
 CONNER MOEHRING
 310 W WALL ST SUITE 415
 MIDLAND TX, 79701
 Fax To:

Received: 11/17/2022
 Reported: 11/18/2022
 Project Name: COPPERHEAD 31-20
 Project Number: 1158 (10.17.22)
 Project Location: COG - EDDY CO NM

Sampling Date: 11/17/2022
 Sampling Type: Soil
 Sampling Condition: Cool & Intact
 Sample Received By: Tamara Oldaker

Sample ID: SW - 9 (0.5') (H225444-13)

BTX 8021B		mg/kg		Analyzed By: JH					
Analyte	Result	Reporting Limit	Analyzed	Method Blank	BS	% Recovery	True Value QC	RPD	Qualifier
Benzene*	<0.050	0.050	11/17/2022	ND	2.00	100	2.00	0.0805	
Toluene*	<0.050	0.050	11/17/2022	ND	2.15	108	2.00	1.55	
Ethylbenzene*	<0.050	0.050	11/17/2022	ND	1.99	99.5	2.00	1.61	
Total Xylenes*	<0.150	0.150	11/17/2022	ND	6.01	100	6.00	1.36	
Total BTX	<0.300	0.300	11/17/2022	ND					

Surrogate: 4-Bromofluorobenzene (PID) 97.7 % 69.9-140

Chloride, SM4500CI-B		mg/kg		Analyzed By: GM					
Analyte	Result	Reporting Limit	Analyzed	Method Blank	BS	% Recovery	True Value QC	RPD	Qualifier
Chloride	<16.0	16.0	11/18/2022	ND	416	104	400	3.77	

TPH 8015M		mg/kg		Analyzed By: MS					
Analyte	Result	Reporting Limit	Analyzed	Method Blank	BS	% Recovery	True Value QC	RPD	Qualifier
GRO C6-C10*	<10.0	10.0	11/18/2022	ND	246	123	200	17.2	
DRO >C10-C28*	<10.0	10.0	11/18/2022	ND	221	110	200	14.6	
EXT DRO >C28-C36	<10.0	10.0	11/18/2022	ND					

Surrogate: 1-Chlorooctane 75.3 % 45.3-161

Surrogate: 1-Chlorooctadecane 78.3 % 46.3-178

Cardinal Laboratories

*=Accredited Analyte

PLEASE NOTE: Liability and Damages. Cardinal's liability and client's exclusive remedy for any claim arising, whether based in contract or tort, shall be limited to the amount paid by client for analyses. All claims, including those for negligence and any other cause whatsoever shall be deemed waived unless made in writing and received by Cardinal within thirty (30) days after completion of the applicable service. In no event shall Cardinal be liable for incidental or consequential damages, including, without limitation, business interruptions, loss of use, or loss of profits incurred by client, its subsidiaries, affiliates or successors arising out of or related to the performance of the services hereunder by Cardinal, regardless of whether such claim is based upon any of the above stated reasons or otherwise. Results relate only to the samples identified above. This report shall not be reproduced except in full with written approval of Cardinal Laboratories.

Celey D. Keene, Lab Director/Quality Manager

PHONE (575) 393-2326 ° 101 E. MARLAND ° HOBBS, NM 88240

Notes and Definitions

ND	Analyte NOT DETECTED at or above the reporting limit
RPD	Relative Percent Difference
**	Samples not received at proper temperature of 6°C or below.
***	Insufficient time to reach temperature.
-	Chloride by SM4500Cl-B does not require samples be received at or below 6°C Samples reported on an as received basis (wet) unless otherwise noted on report

Cardinal Laboratories

*=Accredited Analyte

PLEASE NOTE: Liability and Damages. Cardinal's liability and client's exclusive remedy for any claim arising, whether based in contract or tort, shall be limited to the amount paid by client for analyses. All claims, including those for negligence and any other cause whatsoever shall be deemed waived unless made in writing and received by Cardinal within thirty (30) days after completion of the applicable service. In no event shall Cardinal be liable for incidental or consequential damages, including, without limitation, business interruptions, loss of use, or loss of profits incurred by client, its subsidiaries, affiliates or successors arising out of or related to the performance of the services hereunder by Cardinal, regardless of whether such claim is based upon any of the above stated reasons or otherwise. Results relate only to the samples identified above. This report shall not be reproduced except in full with written approval of Cardinal Laboratories.

A handwritten signature in black ink, appearing to read "Celey D. Keene".

Celey D. Keene, Lab Director/Quality Manager

Chain of Custody

Work Order No: HA25444Page 1 of 2

Page 16 of 17

Project Manager:	Conner Moehring	Bill to: (if different)	Jacqui Harris
Company Name:	Carmona Resources	Company Name:	COG
Address:	310 W Wall St Ste 415	Address:	15 W London Rd
City, State ZIP:	Midland, TX 79701	City, State ZIP:	Loving, NM 88258
Phone:	432-813-6823	Email:	jacqui.harris@concoPhillips.com

Work Order Comments	
Program: UST/PST <input type="checkbox"/> PRP <input type="checkbox"/> Brownfields <input type="checkbox"/> RC <input type="checkbox"/> Iperfund <input type="checkbox"/>	
State of Project:	
Reporting Level II <input type="checkbox"/> Level III <input type="checkbox"/> ST/UST <input type="checkbox"/> RRP <input type="checkbox"/> Level IV <input type="checkbox"/>	
Deliverables: EDD <input type="checkbox"/> ADAPT <input type="checkbox"/> Other:	

Project Name:	Copperhead 31-20 (10.17.22)	Turn Around	<input type="checkbox"/> Routine <input checked="" type="checkbox"/> Rush	Pres. Code		ANALYSIS REQUEST												Preservative Codes	
Project Number:	1158																	None: NO	
Project Location:	Eddy County, New Mexico	Due Date:																Cool: Cool	
Sampler's Name:	CCM																	HCL: HC	
PO #:																		H ₂ SO ₄ : H ₂	
SAMPLE RECEIPT	Temp Blank:	Yes (No)	Wet Ice:	Yes No														H ₃ PO ₄ : HP	
Received Intact:	Yes (No)	Thermometer ID:																NaHSO ₄ : NABIS	
Cooler Custody Seals:	Yes No N/A	Correction Factor:																Na ₂ S ₂ O ₃ : NaSO ₃	
Sample Custody Seals:	Yes No N/A	Temperature Reading:																Zn Acetate+NaOH: Zn	
Total Containers:		Corrected Temperature:																NaOH+Ascorbic Acid: SAPC	

Sample Identification	Date	Time	Soil	Water	Grab/Comp	# of Cont	Parameters												Sample Comments
CS-1 (0.5')	11/17/2022		X		C	1	BTEX 8021B												
CS-2 (0.5')	11/17/2022		X		C	1	TPH 8015M (GRO + DRO + MRO)												
CS-3 (0.5')	11/17/2022		X		C	1	Chloride 4500												
CS-4 (0.5')	11/17/2022		X		C	1													
SW-1 (0.5')	11/17/2022		X		C	1													
SW-2 (0.5')	11/17/2022		X		C	1													
SW-3 (0.5')	11/17/2022		X		C	1													
SW-4 (0.5')	11/17/2022		X		C	1													
SW-5 (0.5')	11/17/2022		X		C	1													
SW-6 (0.5')	11/17/2022		X		C	1													

Comments:

Relinquished by: (Signature)

Date/Time

Received by: (Signature)

Date/Time

Cal

11-17-22 15:15

Carmona Resources

District I
1625 N. French Dr., Hobbs, NM 88240
Phone:(575) 393-6161 Fax:(575) 393-0720
District II
811 S. First St., Artesia, NM 88210
Phone:(575) 748-1283 Fax:(575) 748-9720
District III
1000 Rio Brazos Rd., Aztec, NM 87410
Phone:(505) 334-6178 Fax:(505) 334-6170
District IV
1220 S. St Francis Dr., Santa Fe, NM 87505
Phone:(505) 476-3470 Fax:(505) 476-3462

State of New Mexico
Energy, Minerals and Natural Resources
Oil Conservation Division
1220 S. St Francis Dr.
Santa Fe, NM 87505

CONDITIONS

Action 175852

CONDITIONS

Operator: COG OPERATING LLC 600 W Illinois Ave Midland, TX 79701	OGRID: 229137
	Action Number: 175852
	Action Type: [C-141] Release Corrective Action (C-141)

CONDITIONS

Created By	Condition	Condition Date
jnobui	Closure Report Approved.	3/6/2023