

Volume calculator

There was no volume calculator prepared when the spill occurred.



Pima Environmental Services
5614 N. Lovington Highway
Hobbs, NM 88240
575-964-7740

March 20, 2024

NMOCD District 2
811 S. First St
Artesia, NM, 88210

RE: Liner Inspection and Closure Report
Rio Blanco 4 33 Fed Com 1H
API No. 30-025-3244
GPS : Latitude 32.3336803 Longitude -103.48264
UL- E, Section 04, Township 23S, Range 34E
Lea County, NM
NMOCD Reference No. NCH1836147495

Devon Energy Production Company (Devon) has contracted Pima Environmental Services, LLC (Pima) to perform a liner inspection and prepare this closure report for a produced water release that happened at the Rio Blanco 4 33 Fed Com 1H (Rio Blanco). This incident was assigned Incident ID:NCH1836147495, by the New Mexico Oil Conservation Division (NMOCD).

Site Information and Site Characterization

The Rio Blanco is located approximately twenty-two (22) miles Southwest of Eunice, NM. This spill site is in Unit E, Section 04, Township 23S, Range 34E, Latitude 32.3336803 Longitude -103.48264, Lea County, NM. A Location Map can be found in Figure 1.

Based upon New Mexico Office of the State Engineer well water data, depth to the nearest groundwater in this area is 285 feet below grade surface (BGS). According to the United States Geological Survey well water data, depth to the nearest groundwater in this area is 135 feet BGS. See Appendix A for referenced water surveys. The Rio Blanco is in a low karst area (Figure 3). A Topographic Map can be found in Figure 2.

Release Information

NCH1836147495: On November 18, 2018, a 6" VIC clamp located on the gun barrel began leaking. Approximately 32.35 barrels (bbls) of produced water was released from the VIC clamp, into the lined, secondary containment. A vacuum truck was dispatched and recovered approximately 32.35 bbls of fluid from the lined SPCC containment ring. Once standing fluids were removed, the liner was visually inspected by Devon field staff for any pinholes or punctures; none were found. Based on this inspection there is no evidence that the spilled fluids left containment.

A Site Map can be found in Figure 4.

Site Assessment and Liner Inspection

On March 15, 2024, after submitting the 48-hour notification application ID:322695 to the OCD, Pima Environmental conducted a liner inspection at this location. Pima concluded that this liner and containment maintained its integrity and was able to retain the fluids. The liner inspection form and photographic documentation can be found in Appendix C.

Countermeasures Due to Rejection (241278)

The previously submitted report faced rejection due to multiple concerns raised by the NMOCD. The summary of the rejection outlined the following reasons:

Closure denied. The submitted photos in the report depict secondary containment walls and not liner integrity.

Per 19.15.29.11, if the release occurred within a lined containment area, the responsible party must demonstrate liner integrity after affected material is removed.

- The Liner inspection photographs have been retaken displaying the secondary containment liner integrity.

Include photo documentation of the liner within and throughout the containment area. This includes photo documentation of the liner where equipment, such as pipelines and tanks, intersect the liner.

- The new Liner Inspection photographs include photo documentation inside the containment where surface equipment is inside the secondary containment.

Closure Request

After careful review, Pima requests that this incident ID: NCH1836147495, be closed. Devon has complied with the applicable closure requirements.

Should you have any questions or need additional information, please feel free to contact Gio Gomez at 575-964-7740 or Gio@pimaoil.com.

Respectfully,



Gio Gomez

Project Manager

Pima Environmental Services, LLC

Attachments

Figures:

- 1- Location Map
- 2- Topographic Map
- 3- Karst Map
- 4- Site Map

Appendices:

- Appendix A- Referenced Water Surveys
- Appendix B- 48 Hour Notification
- Appendix C- Liner Inspection Form & Photographic Documentation



Pima Environmental Services

Figures:

1-Location Map

2-Topographic Map



3-Karst Map

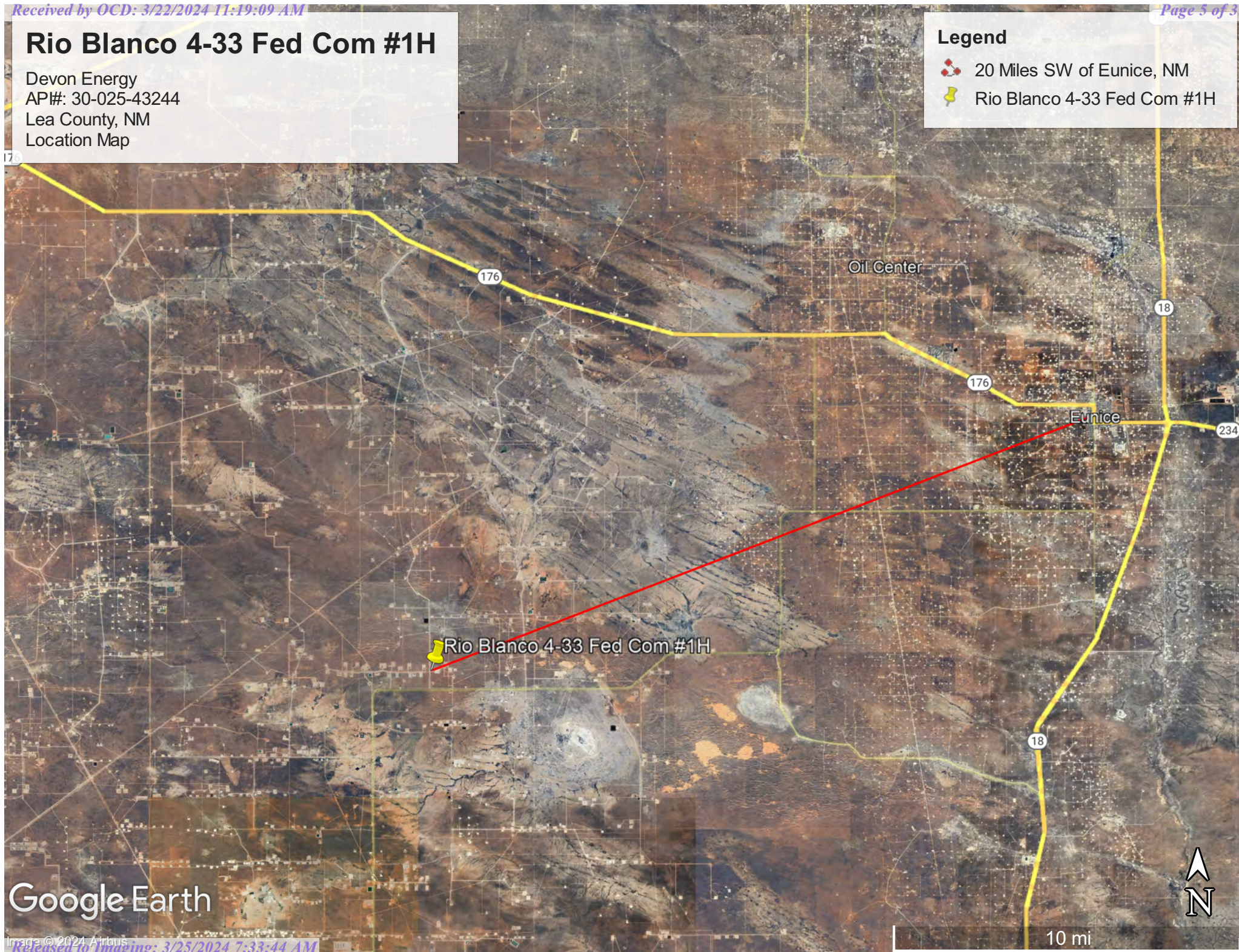
4-Site Map

Rio Blanco 4-33 Fed Com #1H

Devon Energy
AP#: 30-025-43244
Lea County, NM
Location Map

Legend

-  20 Miles SW of Eunice, NM
-  Rio Blanco 4-33 Fed Com #1H



Google Earth

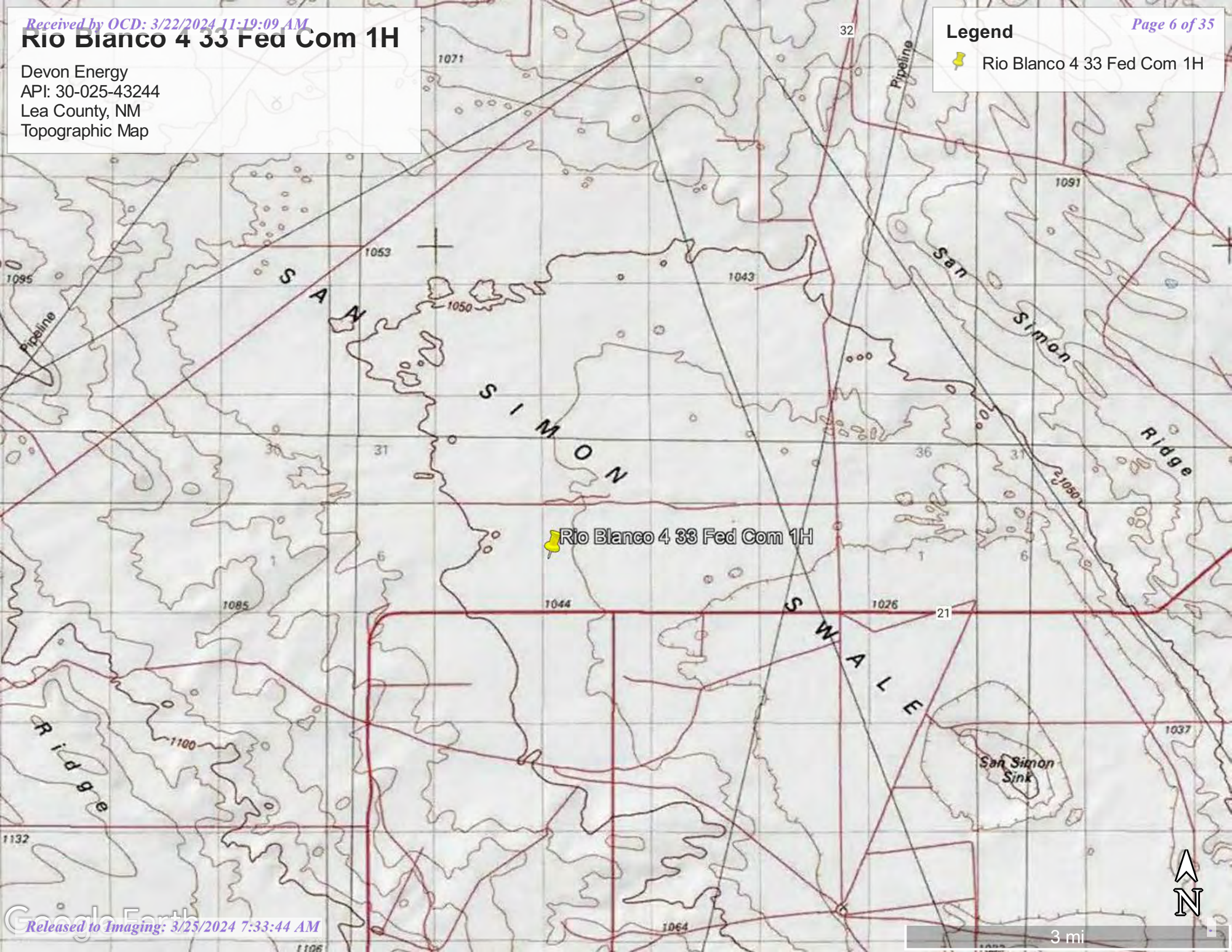
Rio Blanco 4 33 Fed Com 1H

Devon Energy
API: 30-025-43244
Lea County, NM
Topographic Map

Legend







Rio Blanco 4 33 Fed Com 1H

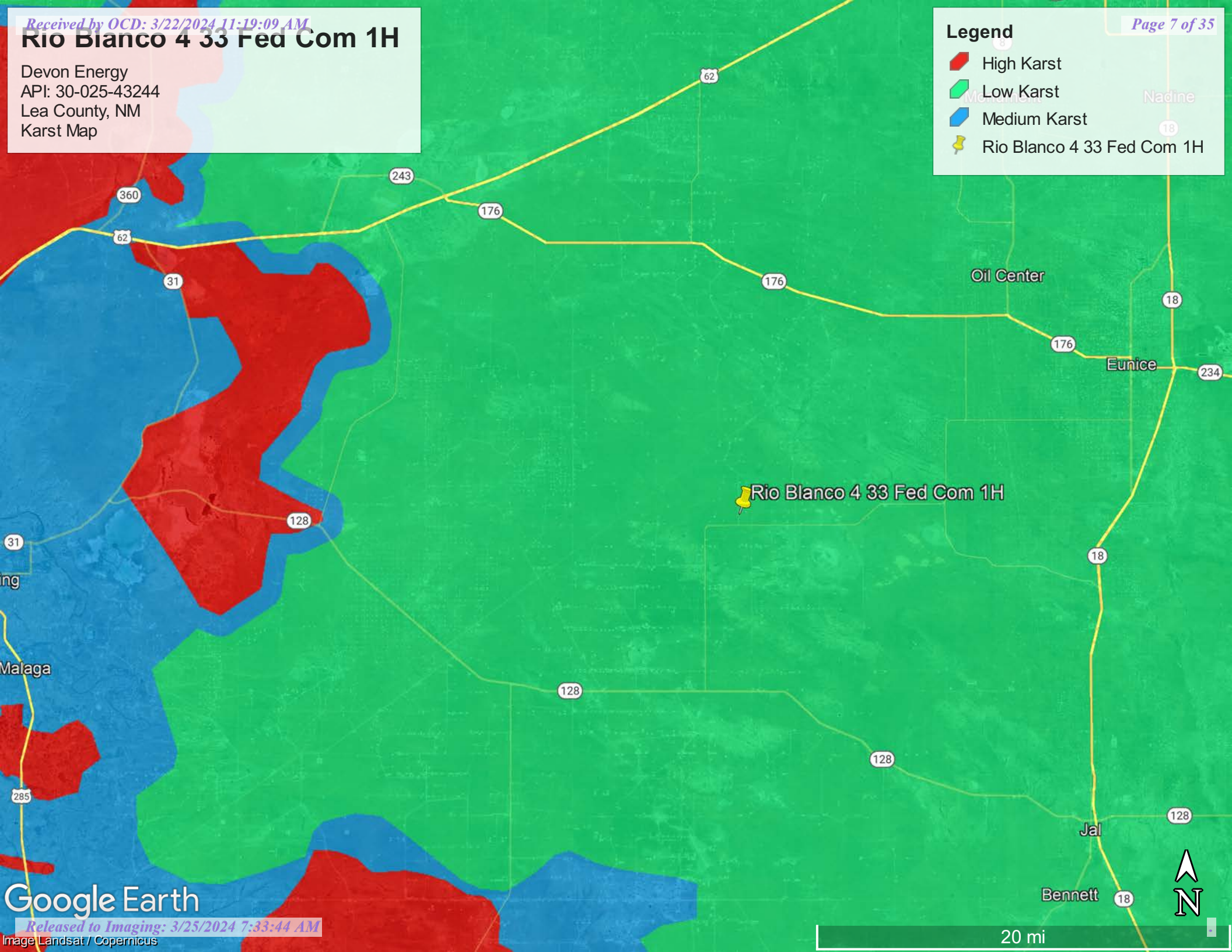


Rio Blanco 4 33 Fed Com 1H

Devon Energy
API: 30-025-43244
Lea County, NM
Karst Map

Legend


-  High Karst
-  Low Karst
-  Medium Karst
-  Rio Blanco 4 33 Fed Com 1H




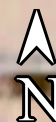
Rio Blanco 4 33 Fed Com 1H

Devon Energy
API: 30-025-43244
Lea County, NM
Site Map

Legend

 Rio Blanco 4 33 Fed Com 1H

Rio Blanco 4 33 Fed Com 1H 



100 ft

Google Earth



Pima Environmental Services

Appendix A

Water Surveys:

OSE

USGS

Surface Water Map

Wetlands Map

SOIL

FEMA



New Mexico Office of the State Engineer

Water Column/Average Depth to Water

(A CLW##### in the POD suffix indicates the POD has been replaced & no longer serves a water right file.)

(R=POD has been replaced,
O=orphaned,
C=the file is closed)

(quarters are 1=NW 2=NE 3=SW 4=SE)

(quarters are smallest to largest) (NAD83 UTM in meters)

(In feet)

POD Number	Code	POD Sub-basin	County	Q 64	Q 16	Q 4	Sec	Tws	Rng	X	Y	Distance	DepthWell	DepthWater	Water Column
CP 01622 POD1		CP	LE	1	3	3	04	23S	34E	642830	3577872	561	575	285	290
CP 01502 POD2		CP	LE	4	3	3	05	23S	34E	642074	3577676	1055	680	300	380
CP 01502 POD1		CP	LE	4	3	3	05	23S	34E	641316	3577635	1693	648	200	448
CP 01829 POD1		CP	LE	4	4	2	32	22S	34E	642559	3580172	1756	1410	1150	260
CP 01705 POD1		CP	LE	4	4	2	32	22S	34E	642588	3580179	1759	700	305	395
CP 01706 POD1		CP	LE	4	4	2	32	22S	34E	642603	3580185	1763	340	282	58
CP 01075 POD1		CP	LE	1	1	1	08	23S	34E	641278	3577525	1780	430	20	410
CP 00872 POD1		CP	LE	1	1	1	08	23S	34E	641225	3577504*	1836	494	305	189
CP 01130 POD2		CP	LE	2	1	2	07	23S	34E	640674	3577549	2311	27		
CP 01130 POD1		CP	LE	2	1	2	07	23S	34E	640662	3577558	2318	27		
CP 00278 POD1		CP	LE	1	3	4	06	23S	34E	640413	3577897	2455	640		
CP 00556 POD1		CP	LE	4	4	3	08	23S	34E	641762	3576206	2461	497	255	242
CP 01760 POD1		CP	LE	3	1	2	16	23S	34E	643627	3575897	2664	767	290	477
CP 01730 POD1		CP	LE	2	2	1	16	23S	34E	643549	3575824	2711	594	200	394
CP 01803 POD1		CP	LE	1	1	1	34	22S	34E	644357	3580786	2815	240	180	60
CP 01826 POD1		CP	LE	1	1	1	34	22S	34E	644379	3580778	2821	698	180	518
CP 01740 POD1		CP	LE	1	1	1	34	22S	34E	644402	3580765	2823	600	560	40
CP 01886 POD1		CP	LE	4	1	4	07	23S	34E	640646	3576545	2871			
E 07616 POD1		E	TO							646466	3576970	3938	500	300	200
CP 00637		CP	LE	3	3	4	15	23S	34E	645293	3574541*	4617	430	430	0
CP 00865 POD1		CP	LE	2	2	3	20	22S	34E	641845	3583118	4783	885	605	280
CP 01785 POD1		CP	LE	4	1	3	14	23S	34E	646203	3575003	4825	488	245	243

Average Depth to Water: **338 feet**
 Minimum Depth: **20 feet**
 Maximum Depth: **1150 feet**

Record Count: 22

UTM NAD83 Radius Search (in meters):

Easting (X): 642809.34

Northing (Y): 3578433.57

Radius: 5000

*UTM location was derived from PLSS - see Help

The data is furnished by the NMOSE/ISC and is accepted by the recipient with the expressed understanding that the OSE/ISC make no warranties, expressed or implied, concerning the accuracy, completeness, reliability, usability, or suitability for any particular purpose of the data.

5/11/23 1:01 PM

WATER COLUMN/ AVERAGE DEPTH TO WATER




New Mexico Office of the State Engineer

Point of Diversion Summary

(quarters are 1=NW 2=NE 3=SW 4=SE)

(quarters are smallest to largest)

(NAD83 UTM in meters)

Well Tag	POD Number	Q64 Q16 Q4 Sec Tws Rng	X	Y
NA	CP 01622 POD1	1 3 3 04 23S 34E	642830	3577872 

x

Driller License: 1706 **Driller Company:** ELITE DRILLERS CORPORATION

Driller Name: BRYCE WALLACE

Drill Start Date: 09/20/2019	Drill Finish Date: 10/02/2019	Plug Date:
Log File Date: 10/17/2019	PCW Rev Date:	Source: Shallow
Pump Type:	Pipe Discharge Size:	Estimated Yield: 280 GPM
Casing Size: 9.70	Depth Well: 575 feet	Depth Water: 285 feet

x

Water Bearing Stratifications:	Top	Bottom	Description
	150	470	Sandstone/Gravel/Conglomerate
	470	575	Shale/Mudstone/Siltstone

x

Casing Perforations:	Top	Bottom
	275	575

x

Meter Number: 20210	Meter Make: TURBINES INC
Meter Serial Number: 2016131	Meter Multiplier: 1.0000
Number of Dials: 7	Meter Type: Diversion
Unit of Measure: Barrels 42 gal.	Return Flow Percent:
Usage Multiplier:	Reading Frequency: Monthly

x

Meter Readings (in Acre-Feet)

Read Date	Year	Mtr Reading	Flag	Rdr	Comment	Mtr Amount Online
08/02/2021	2021	773913	A	ad		0
09/01/2021	2021	773913	A	ad		0
10/05/2021	2021	773913	A	ad		0
11/04/2021	2021	773913	A	ad		0
12/13/2021	2021	773913	A	ad		0
01/01/2022	2022	773913	A	ad		0
02/08/2022	2022	773913	A	ad		0
03/02/2022	2022	773913	A	ad		0
04/01/2022	2022	773913	A	ad		0
05/06/2022	2022	773913	A	ad		0
06/07/2022	2022	773913	A	ad		0
07/10/2022	2022	773913	A	ad		0
09/05/2022	2022	773913	A	ad		0
10/10/2022	2022	773913	A	ad		0
11/10/2022	2022	773913	A	ad		0
06/07/2023	2023	800260	A	ad		3.396




x

**YTD Meter Amounts:	Year	Amount
	2021	0

Rio Blanco 4-33 Fed Com #1H

Devon Energy
AP#: 30-025-43244
Lea County, NM
CP-01622-POD 1 Map

Legend

-  0.34 of a mile
-  CP-01622-POD 1
-  Rio Blanco 4-33 Fed Com #1H



Google Earth



[USGS Home](#)
[Contact USGS](#)
[Search USGS](#)

National Water Information System: Web Interface

USGS Water Resources

Data Category:


Groundwater

Geographic Area:

United States

GO

Click to hide News Bulletins

- Explore the *NEW* [USGS National Water Dashboard](#) interactive map to access real-time water data from over 13,500 stations nationwide.
- [Full News](#) 

Groundwater levels for the Nation



Important: [Next Generation Monitoring Location Page](#)

Search Results -- 1 sites found

site_no list =

- 321924103245501

Minimum number of levels = 1

[Save file of selected sites](#) to local disk for future upload

USGS 321924103245501 23S.35E.06.33133

Available data for this site

Groundwater: Field measurements

GO

Lea County, New Mexico

Hydrologic Unit Code 13070007

Latitude 32°19'24", Longitude 103°24'55" NAD27

Land-surface elevation 3,359 feet above NAVD88

The depth of the well is 200 feet below land surface.

This well is completed in the Other aquifers (N9999OTHER) national aquifer.

This well is completed in the Alluvium, Bolson Deposits and Other Surface Deposits (110AVMB) local aquifer.

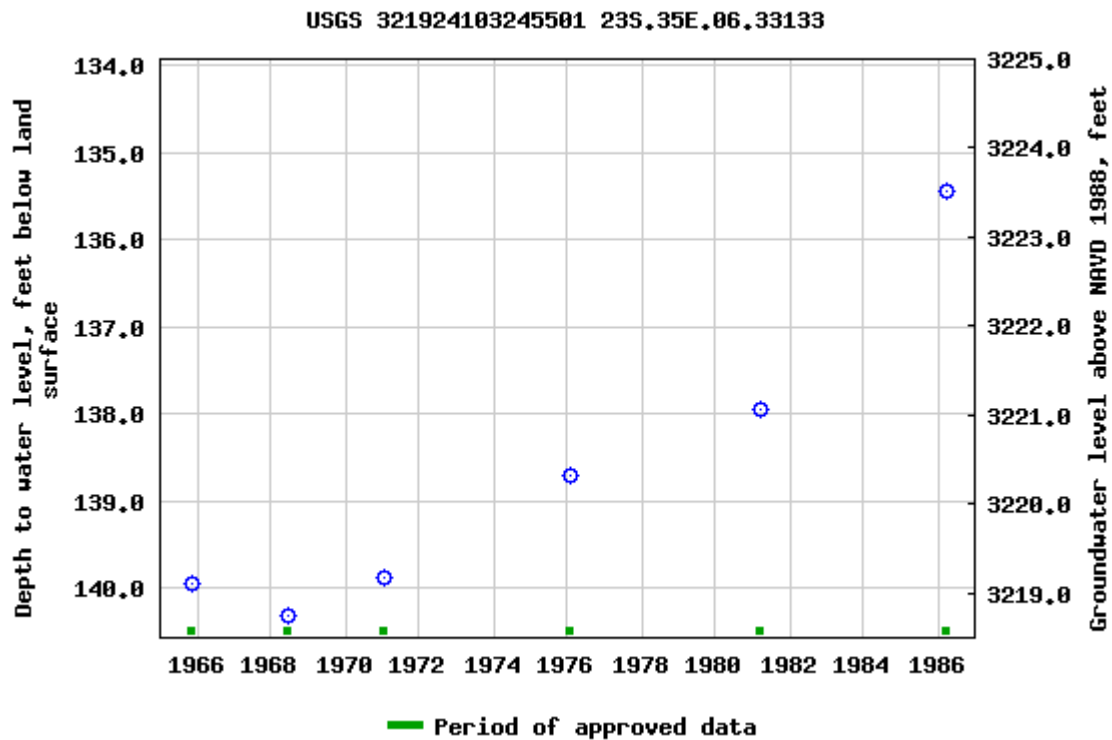
Output formats

[Table of data](#)

[Tab-separated data](#)

[Graph of data](#)

[Reselect period](#)



Breaks in the plot represent a gap of at least one year between field measurements.

[Download a presentation-quality graph](#)

[Questions about sites/data?](#)

[Feedback on this web site](#)

[Automated retrievals](#)

[Help](#)

[Data Tips](#)

[Explanation of terms](#)

[Subscribe for system changes](#)

[News](#)

[Accessibility](#)

[FOIA](#)

[Privacy](#)

[Policies and Notices](#)

[U.S. Department of the Interior](#) | [U.S. Geological Survey](#)

Title: Groundwater for USA: Water Levels

URL: <https://nwis.waterdata.usgs.gov/nwis/gwlevels?>

Page Contact Information: [USGS Water Data Support Team](#)

Page Last Modified: 2023-05-11 14:58:32 EDT

0.58 0.49 nadww02

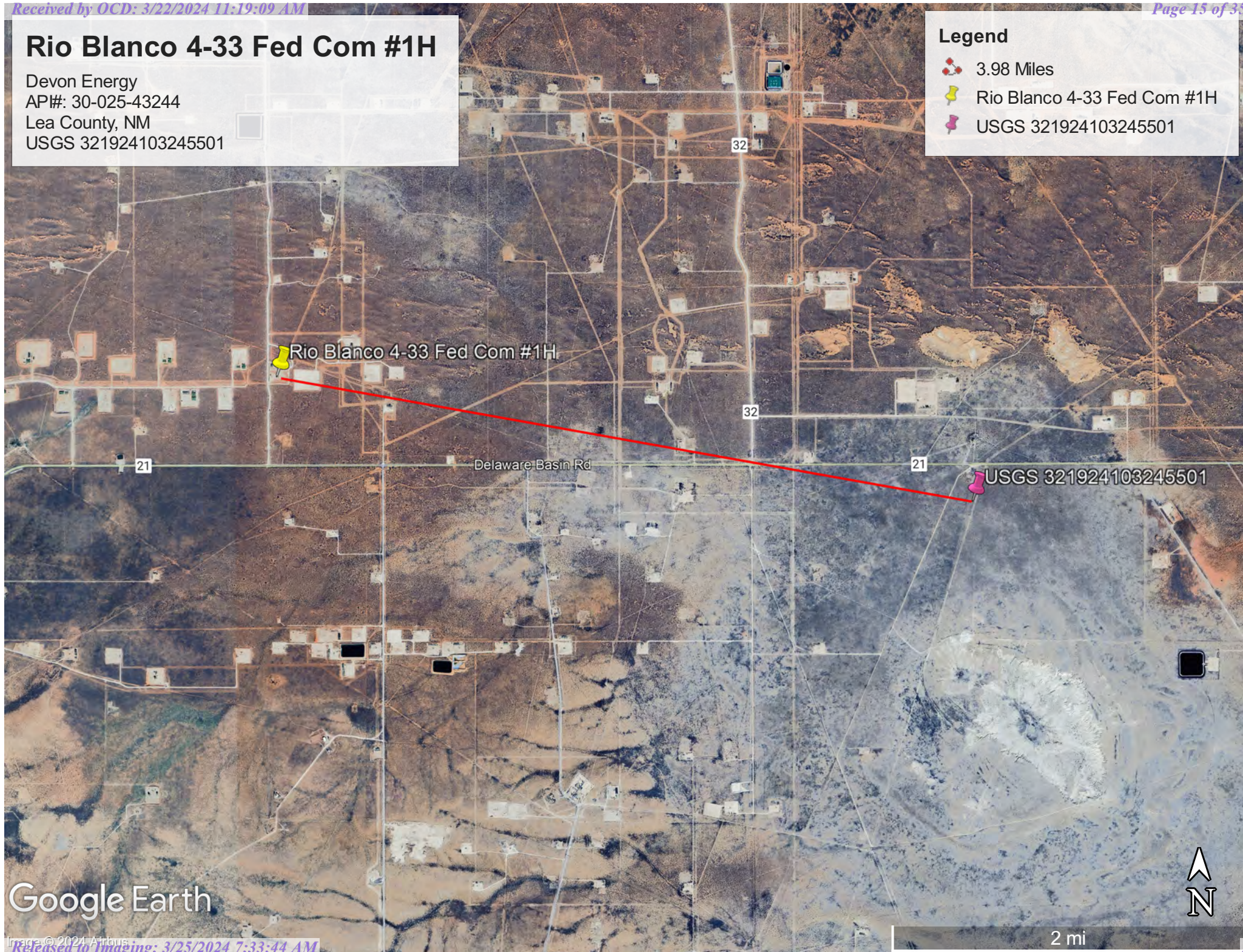


Rio Blanco 4-33 Fed Com #1H

Devon Energy
API#: 30-025-43244
Lea County, NM
USGS 321924103245501

Legend

- 3.98 Miles
- Rio Blanco 4-33 Fed Com #1H
- USGS 321924103245501



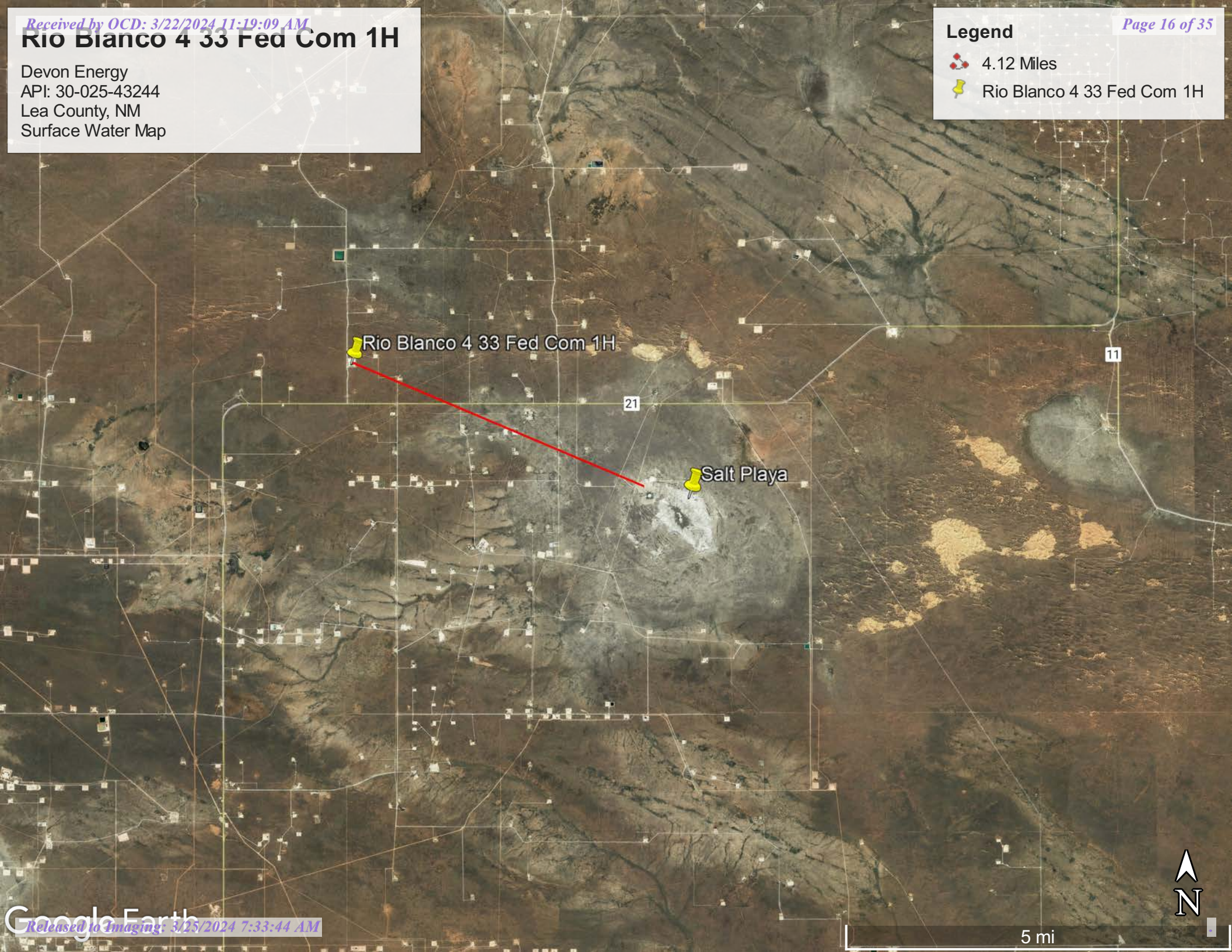
Google Earth

Rio Blanco 4 33 Fed Com 1H

Devon Energy
API: 30-025-43244
Lea County, NM
Surface Water Map

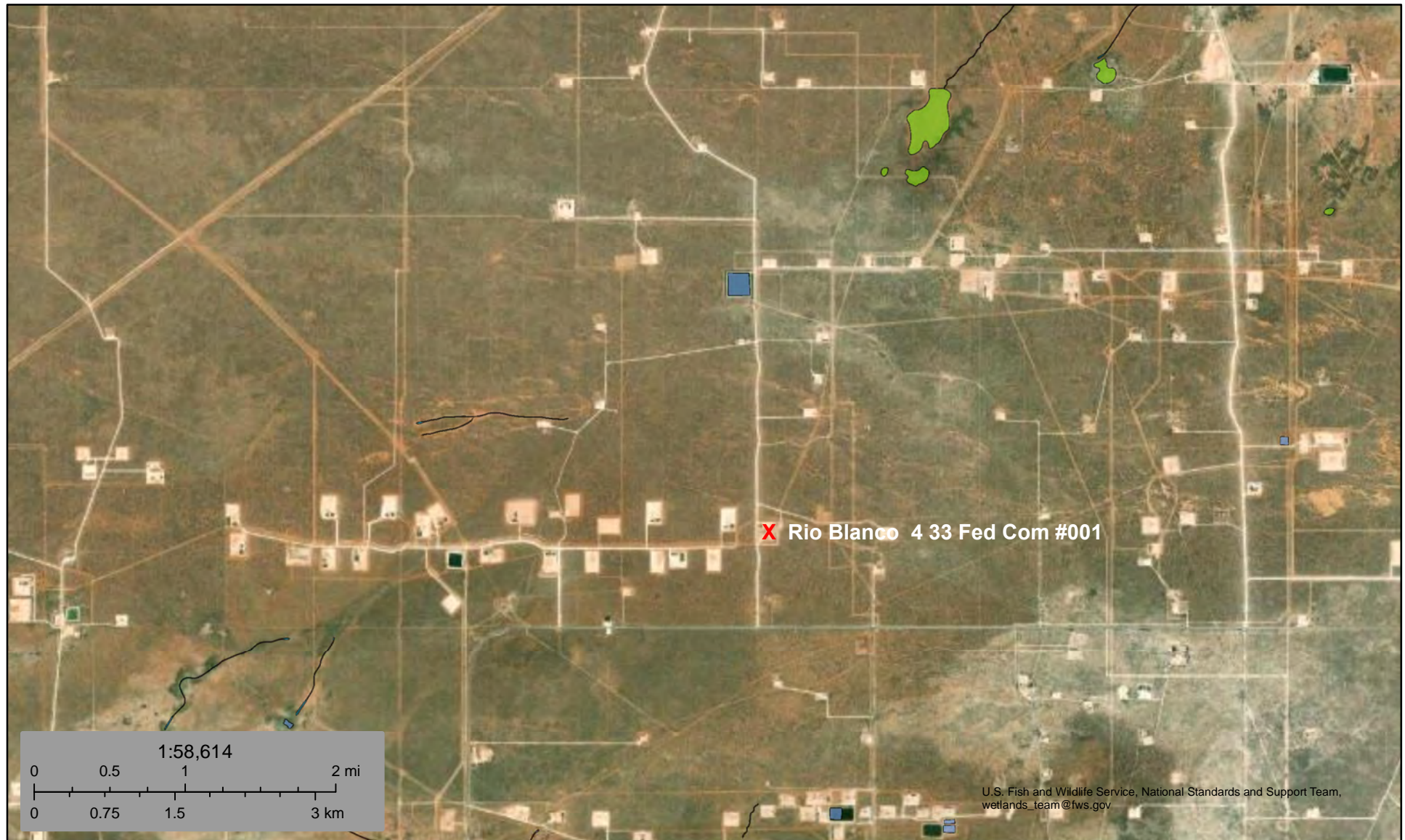
Legend

- 4.12 Miles
- Rio Blanco 4 33 Fed Com 1H





Wetlands Map



May 11, 2023

Wetlands

- Estuarine and Marine Deepwater
- Estuarine and Marine Wetland

- Freshwater Emergent Wetland
- Freshwater Forested/Shrub Wetland
- Freshwater Pond

- Lake
- Other
- Riverine

This map is for general reference only. The US Fish and Wildlife Service is not responsible for the accuracy or currentness of the base data shown on this map. All wetlands related data should be used in accordance with the layer metadata found on the Wetlands Mapper web site.

Map Unit Description: Pyote and Maljamar fine sands---Lea County, New Mexico

Lea County, New Mexico

PU—Pyote and Maljamar fine sands

Map Unit Setting

National map unit symbol: dmqq

Elevation: 3,000 to 3,900 feet

Mean annual precipitation: 10 to 12 inches

Mean annual air temperature: 60 to 62 degrees F

Frost-free period: 190 to 205 days

Farmland classification: Not prime farmland

Map Unit Composition

Pyote and similar soils: 46 percent

Maljamar and similar soils: 44 percent

Minor components: 10 percent

Estimates are based on observations, descriptions, and transects of the mapunit.

Description of Pyote

Setting

Landform: Plains

Landform position (three-dimensional): Rise

Down-slope shape: Linear

Across-slope shape: Linear

Parent material: Sandy eolian deposits derived from sedimentary rock

Typical profile

A - 0 to 30 inches: fine sand

Bt - 30 to 60 inches: fine sandy loam

Properties and qualities

Slope: 0 to 3 percent

Depth to restrictive feature: More than 80 inches

Drainage class: Well drained

Runoff class: Negligible

Capacity of the most limiting layer to transmit water (Ksat): High
(2.00 to 6.00 in/hr)

Depth to water table: More than 80 inches

Frequency of flooding: None

Frequency of ponding: None

Calcium carbonate, maximum content: 5 percent

Gypsum, maximum content: 1 percent

Maximum salinity: Nonsaline to very slightly saline (0.0 to 2.0 mmhos/cm)

Sodium adsorption ratio, maximum: 2.0

Available water supply, 0 to 60 inches: Low (about 5.1 inches)

Interpretive groups

Land capability classification (irrigated): 6e

Map Unit Description: Pyote and Maljamar fine sands---Lea County, New Mexico

Land capability classification (nonirrigated): 7s
Hydrologic Soil Group: A
Ecological site: R070BD003NM - Loamy Sand
Hydric soil rating: No

Description of Maljamar

Setting

Landform: Plains
Landform position (three-dimensional): Rise
Down-slope shape: Linear
Across-slope shape: Linear
Parent material: Sandy eolian deposits derived from sedimentary rock

Typical profile

A - 0 to 24 inches: fine sand
Bt - 24 to 50 inches: sandy clay loam
Bkm - 50 to 60 inches: cemented material

Properties and qualities

Slope: 0 to 3 percent
Depth to restrictive feature: 40 to 60 inches to petrocalcic
Drainage class: Well drained
Runoff class: Very low
Capacity of the most limiting layer to transmit water (Ksat): Very low to moderately low (0.00 to 0.06 in/hr)
Depth to water table: More than 80 inches
Frequency of flooding: None
Frequency of ponding: None
Calcium carbonate, maximum content: 5 percent
Gypsum, maximum content: 1 percent
Maximum salinity: Nonsaline to very slightly saline (0.0 to 2.0 mmhos/cm)
Sodium adsorption ratio, maximum: 2.0
Available water supply, 0 to 60 inches: Low (about 5.6 inches)

Interpretive groups

Land capability classification (irrigated): 6e
Land capability classification (nonirrigated): 7e
Hydrologic Soil Group: B
Ecological site: R070BD003NM - Loamy Sand
Hydric soil rating: No

Minor Components

Kermit

Percent of map unit: 10 percent
Ecological site: R070BC022NM - Sandhills

Map Unit Description: Pyote and Maljamar fine sands---Lea County, New Mexico

Hydric soil rating: No

Data Source Information

Soil Survey Area: Lea County, New Mexico

Survey Area Data: Version 19, Sep 8, 2022

National Flood Hazard Layer FIRMette



103°29'16"W 32°20'17"N



Legend

SEE FIS REPORT FOR DETAILED LEGEND AND INDEX MAP FOR FIRM PANEL LAYOUT

SPECIAL FLOOD HAZARD AREAS		Without Base Flood Elevation (BFE) Zone A, V, A99
		With BFE or Depth Zone AE, AO, AH, VE, AR
		Regulatory Floodway
OTHER AREAS OF FLOOD HAZARD		0.2% Annual Chance Flood Hazard, Areas of 1% annual chance flood with average depth less than one foot or with drainage areas of less than one square mile Zone X
		Future Conditions 1% Annual Chance Flood Hazard Zone X
		Area with Reduced Flood Risk due to Levee. See Notes. Zone X
		Area with Flood Risk due to Levee Zone D
OTHER AREAS		NO SCREEN Area of Minimal Flood Hazard Zone X
		Effective LOMRs
		Area of Undetermined Flood Hazard Zone D
GENERAL STRUCTURES		Channel, Culvert, or Storm Sewer
		Levee, Dike, or Floodwall
OTHER FEATURES		20.2 Cross Sections with 1% Annual Chance Water Surface Elevation
		17.5 Cross Sections with 1% Annual Chance Water Surface Elevation
		Coastal Transect
		Base Flood Elevation Line (BFE)
		Limit of Study
		Jurisdiction Boundary
		Coastal Transect Baseline
MAP PANELS		Digital Data Available
		No Digital Data Available
		Unmapped



The pin displayed on the map is an approximate point selected by the user and does not represent an authoritative property location.

This map complies with FEMA's standards for the use of digital flood maps if it is not void as described below. The basemap shown complies with FEMA's basemap accuracy standards

The flood hazard information is derived directly from the authoritative NFHL web services provided by FEMA. This map was exported on 5/11/2023 at 3:02 PM and does not reflect changes or amendments subsequent to this date and time. The NFHL and effective information may change or become superseded by new data over time.

This map image is void if the one or more of the following map elements do not appear: basemap imagery, flood zone labels, legend, scale bar, map creation date, community identifiers, FIRM panel number, and FIRM effective date. Map images for unmapped and unmodernized areas cannot be used for regulatory purposes.



Pima Environmental Services

Appendix B

48-Hour Notification



Gio PimaOil <gio@pimaoil.com>

FW: [EXTERNAL] The Oil Conservation Division (OCD) has accepted the application, Application ID: 322695

Woodall, Dale <Dale.Woodall@dvn.com>

Tue, Mar 12, 2024 at 2:55 PM

To: Gio PimaOil <gio@pimaoil.com>, Lynsey Pima Oil <lynsey@pimaoil.com>

Dale Woodall

Environmental Professional**Hobbs, NM****Office:** 575-748-1838**Mobile:** 405-318-4697Dale.Woodall@dvn.com

From: OCDOnline@state.nm.us <OCDOnline@state.nm.us>**Sent:** Tuesday, March 12, 2024 2:55 PM**To:** Woodall, Dale <Dale.Woodall@dvn.com>**Subject:** [EXTERNAL] The Oil Conservation Division (OCD) has accepted the application, Application ID: 322695

To whom it may concern (c/o Dale Woodall for DEVON ENERGY PRODUCTION COMPANY, LP),

The OCD has received the submitted *Notification for Liner Inspection for a Release* (C-141L), for incident ID (n#) nCH1836147495.

The liner inspection is expected to take place:

When: 03/15/2024 @ 08:15**Where:** E-04-23S-34E 0 FNL 0 FEL (32.3336803,-103.48264)**Additional Information:** Andrew Franco 806-200-0054**Additional Instructions:** E-4-23S-34E, (32.3336803,-103.48264 NAD83) From the intersection of County Rd 21 (Delaware Basin Rd) and Antelope Rd, travel West on County Rd 21, for 0.65 of a mile, turn North on Lease Rd for 0.57 of a mile, turn, arriving at location on the right.

An OCD representative may be available onsite at the date and time reported. In the absence or presence of an OCD representative, liner inspection pursuant to 19.15.29.11.A(5)(a) NMAC is required. Should there be a change in the scheduled date and time of the sampling event, then another notification should be resubmitted through OCD permitting as soon as possible.

- **Failure to notify the OCD of liner inspections including any changes in date/time per the requirements of 19.15.29.11.A(5)(a)(ii) NMAC, may result in the inspection not being accepted.**

If you have any questions regarding this application, or don't know why you have received this email, please contact us.

New Mexico Energy, Minerals and Natural Resources Department
1220 South St. Francis Drive
Santa Fe, NM 87505

Confidentiality Warning: This message and any attachments are intended only for the use of the intended recipient(s), are confidential, and may be privileged. If you are not the intended recipient, you are hereby notified that any review, retransmission, conversion to hard copy, copying, circulation or other use of all or any portion of this message and any attachments is strictly prohibited. If you are not the intended recipient, please notify the sender immediately by return e-mail, and delete this message and any attachments from your system.



Pima Environmental Services

Appendix C

Liner Inspection Form

Photographic Documentation



Pima Environmental Services, LLC

Liner Inspection FormCompany Name: Devon EnergySite: Rio Blanco 4 33 Fed Com 1HLat/Long: 32.3336803, -103.48264NMOCD Incident ID
& Incident Date: NCH1836147495 11/18/20182-Day Notification
Sent: via Email by Dale Woodall on OCD portal 3/12/2024Inspection Date: 3/15/2024

Liner Type: Earthen w/liner Earthen no liner Polystar

Steel w/poly liner Steel w/spray epoxy No Liner

Other: _____

Visualization	Yes	No	Comments
Is there a tear in the liner?		X	
Are there holes in the liner?		X	
Is the liner retaining any fluids?	X		Rainwater, small puddles in some areas
Does the liner have integrity to contain a leak?	X		

Comments: _____

Inspector Name: Andrew Franco Inspector Signature: Andrew Franco



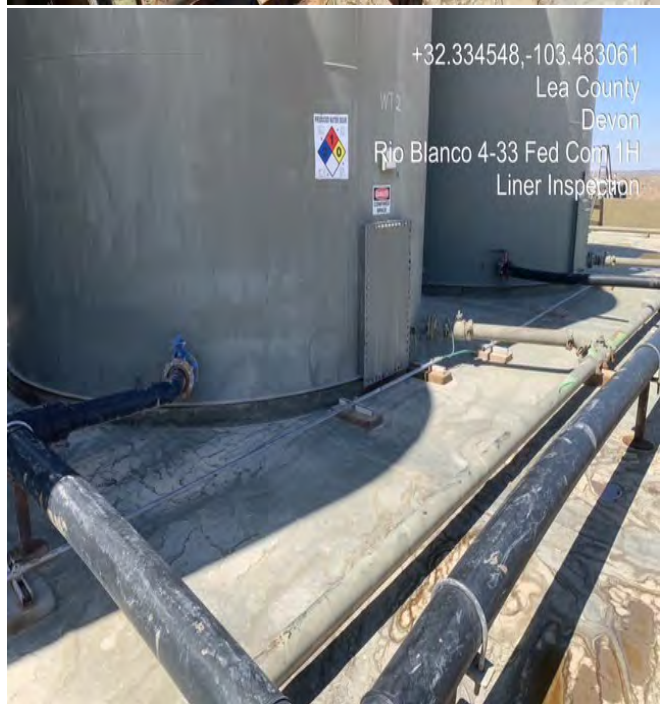
**SITE PHOTOGRAPHS
DEVON ENERGY**

Rio Blanco 4-33 Fed Com 1H

LINER INSPECTION







District I
1625 N. French Dr., Hobbs, NM 88240
Phone:(575) 393-6161 Fax:(575) 393-0720
District II
811 S. First St., Artesia, NM 88210
Phone:(575) 748-1283 Fax:(575) 748-9720
District III
1000 Rio Brazos Rd., Aztec, NM 87410
Phone:(505) 334-6178 Fax:(505) 334-6170
District IV
1220 S. St Francis Dr., Santa Fe, NM 87505
Phone:(505) 476-3470 Fax:(505) 476-3462

State of New Mexico
Energy, Minerals and Natural Resources
Oil Conservation Division
1220 S. St Francis Dr.
Santa Fe, NM 87505

QUESTIONS

Action 325908

QUESTIONS

Operator: DEVON ENERGY PRODUCTION COMPANY, LP 333 West Sheridan Ave. Oklahoma City, OK 73102	OGRID:	6137
	Action Number:	325908
	Action Type:	[C-141] Remediation Closure Request C-141 (C-141-v-Closure)

QUESTIONS

Prerequisites	
Incident ID (n#)	nCH1836147495
Incident Name	NCH1836147495 RIO BLANCO 4 33 FED COM 1H @ 30-025-43244
Incident Type	Produced Water Release
Incident Status	Remediation Closure Report Received
Incident Well	[30-025-43244] RIO BLANCO 4 33 FEDERAL COM #001H

Location of Release Source	
Please answer all the questions in this group.	
Site Name	RIO BLANCO 4 33 FED COM 1H
Date Release Discovered	11/18/2018
Surface Owner	Private

Incident Details	
Please answer all the questions in this group.	
Incident Type	Produced Water Release
Did this release result in a fire or is the result of a fire	No
Did this release result in any injuries	No
Has this release reached or does it have a reasonable probability of reaching a watercourse	No
Has this release endangered or does it have a reasonable probability of endangering public health	No
Has this release substantially damaged or will it substantially damage property or the environment	No
Is this release of a volume that is or may with reasonable probability be detrimental to fresh water	No

Nature and Volume of Release	
Material(s) released, please answer all that apply below. Any calculations or specific justifications for the volumes provided should be attached to the follow-up C-141 submission.	
Crude Oil Released (bbls) Details	Not answered.
Produced Water Released (bbls) Details	Cause: Equipment Failure Tank (Any) Produced Water Released: 32 BBL Recovered: 32 BBL Lost: 0 BBL.
Is the concentration of chloride in the produced water >10,000 mg/l	No
Condensate Released (bbls) Details	Not answered.
Natural Gas Vented (Mcf) Details	Not answered.
Natural Gas Flared (Mcf) Details	Not answered.
Other Released Details	Not answered.
Are there additional details for the questions above (i.e. any answer containing Other, Specify, Unknown, and/or Fire, or any negative lost amounts)	Not answered.

District I

1625 N. French Dr., Hobbs, NM 88240
Phone:(575) 393-6161 Fax:(575) 393-0720

District II

811 S. First St., Artesia, NM 88210
Phone:(575) 748-1283 Fax:(575) 748-9720

District III

1000 Rio Brazos Rd., Aztec, NM 87410
Phone:(505) 334-6178 Fax:(505) 334-6170

District IV

1220 S. St Francis Dr., Santa Fe, NM 87505
Phone:(505) 476-3470 Fax:(505) 476-3462

State of New Mexico
Energy, Minerals and Natural Resources
Oil Conservation Division
1220 S. St Francis Dr.
Santa Fe, NM 87505

QUESTIONS, Page 2

Action 325908

QUESTIONS (continued)

Operator: DEVON ENERGY PRODUCTION COMPANY, LP 333 West Sheridan Ave. Oklahoma City, OK 73102	OGRID:	6137
	Action Number:	325908
	Action Type:	[C-141] Remediation Closure Request C-141 (C-141-v-Closure)

QUESTIONS

Nature and Volume of Release (continued)	
Is this a gas only submission (i.e. only significant Mcf values reported)	No, according to supplied volumes this does not appear to be a "gas only" report.
Was this a major release as defined by Subsection A of 19.15.29.7 NMAC	Yes
Reasons why this would be considered a submission for a notification of a major release	From paragraph A. "Major release" determine using: (1) an unauthorized release of a volume, excluding gases, of 25 barrels or more.
With the implementation of the 19.15.27 NMAC (05/25/2021), venting and/or flaring of natural gas (i.e. gas only) are to be submitted on the C-129 form.	

Initial Response

The responsible party must undertake the following actions immediately unless they could create a safety hazard that would result in injury.

The source of the release has been stopped	True
The impacted area has been secured to protect human health and the environment	True
Released materials have been contained via the use of berms or dikes, absorbent pads, or other containment devices	True
All free liquids and recoverable materials have been removed and managed appropriately	True
If all the actions described above have not been undertaken, explain why	Not answered.

Per Paragraph (4) of Subsection B of 19.15.29.8 NMAC the responsible party may commence remediation immediately after discovery of a release. If remediation has begun, please prepare and attach a narrative of actions to date in the follow-up C-141 submission. If remedial efforts have been successfully completed or if the release occurred within a lined containment area (see Subparagraph (a) of Paragraph (5) of Subsection A of 19.15.29.11 NMAC), please prepare and attach all information needed for closure evaluation in the follow-up C-141 submission.

I hereby certify that the information given above is true and complete to the best of my knowledge and understand that pursuant to OCD rules and regulations all operators are required to report and/or file certain release notifications and perform corrective actions for releases which may endanger public health or the environment. The acceptance of a C-141 report by the OCD does not relieve the operator of liability should their operations have failed to adequately investigate and remediate contamination that pose a threat to groundwater, surface water, human health or the environment. In addition, OCD acceptance of a C-141 report does not relieve the operator of responsibility for compliance with any other federal, state, or local laws and/or regulations.

I hereby agree and sign off to the above statement	Name: Dale Woodall Title: EHS Professional Email: Dale.Woodall@dmv.com Date: 03/22/2024
--	--

District I

1625 N. French Dr., Hobbs, NM 88240
Phone:(575) 393-6161 Fax:(575) 393-0720

District II

811 S. First St., Artesia, NM 88210
Phone:(575) 748-1283 Fax:(575) 748-9720

District III

1000 Rio Brazos Rd., Aztec, NM 87410
Phone:(505) 334-6178 Fax:(505) 334-6170

District IV

1220 S. St Francis Dr., Santa Fe, NM 87505
Phone:(505) 476-3470 Fax:(505) 476-3462

State of New Mexico
Energy, Minerals and Natural Resources
Oil Conservation Division
1220 S. St Francis Dr.
Santa Fe, NM 87505

QUESTIONS, Page 3

Action 325908

QUESTIONS (continued)

Operator: DEVON ENERGY PRODUCTION COMPANY, LP 333 West Sheridan Ave. Oklahoma City, OK 73102	OGRID: 6137
	Action Number: 325908
	Action Type: [C-141] Remediation Closure Request C-141 (C-141-v-Closure)

QUESTIONS**Site Characterization**

Please answer all the questions in this group (only required when seeking remediation plan approval and beyond). This information must be provided to the appropriate district office no later than 90 days after the release discovery date.

What is the shallowest depth to groundwater beneath the area affected by the release in feet below ground surface (ft bgs)	Between 100 and 500 (ft.)
What method was used to determine the depth to ground water	NM OSE iWaters Database Search
Did this release impact groundwater or surface water	No
What is the minimum distance, between the closest lateral extents of the release and the following surface areas:	
A continuously flowing watercourse or any other significant watercourse	Greater than 5 (mi.)
Any lakebed, sinkhole, or playa lake (measured from the ordinary high-water mark)	Greater than 5 (mi.)
An occupied permanent residence, school, hospital, institution, or church	Greater than 5 (mi.)
A spring or a private domestic fresh water well used by less than five households for domestic or stock watering purposes	Greater than 5 (mi.)
Any other fresh water well or spring	Greater than 5 (mi.)
Incorporated municipal boundaries or a defined municipal fresh water well field	Greater than 5 (mi.)
A wetland	Between 1 and 5 (mi.)
A subsurface mine	Greater than 5 (mi.)
An (non-karst) unstable area	Greater than 5 (mi.)
Categorize the risk of this well / site being in a karst geology	Low
A 100-year floodplain	Greater than 5 (mi.)
Did the release impact areas not on an exploration, development, production, or storage site	No

Remediation Plan

Please answer all the questions that apply or are indicated. This information must be provided to the appropriate district office no later than 90 days after the release discovery date.

Requesting a remediation plan approval with this submission	Yes
<i>Attach a comprehensive report demonstrating the lateral and vertical extents of soil contamination associated with the release have been determined, pursuant to 19.15.29.11 NMAC and 19.15.29.13 NMAC.</i>	
Have the lateral and vertical extents of contamination been fully delineated	Yes
Was this release entirely contained within a lined containment area	Yes
<i>Per Subsection B of 19.15.29.11 NMAC unless the site characterization report includes completed efforts at remediation, the report must include a proposed remediation plan in accordance with 19.15.29.12 NMAC, which includes the anticipated timelines for beginning and completing the remediation.</i>	
On what estimated date will the remediation commence	03/15/2024
On what date will (or did) the final sampling or liner inspection occur	03/15/2024
On what date will (or was) the remediation complete(d)	03/15/2024
What is the estimated surface area (in square feet) that will be remediated	0
What is the estimated volume (in cubic yards) that will be remediated	0
<i>These estimated dates and measurements are recognized to be the best guess or calculation at the time of submission and may (be) change(d) over time as more remediation efforts are completed.</i>	
<i>The OCD recognizes that proposed remediation measures may have to be minimally adjusted in accordance with the physical realities encountered during remediation. If the responsible party has any need to significantly deviate from the remediation plan proposed, then it should consult with the division to determine if another remediation plan submission is required.</i>	

District I

1625 N. French Dr., Hobbs, NM 88240
Phone:(575) 393-6161 Fax:(575) 393-0720

District II

811 S. First St., Artesia, NM 88210
Phone:(575) 748-1283 Fax:(575) 748-9720

District III

1000 Rio Brazos Rd., Aztec, NM 87410
Phone:(505) 334-6178 Fax:(505) 334-6170

District IV

1220 S. St Francis Dr., Santa Fe, NM 87505
Phone:(505) 476-3470 Fax:(505) 476-3462

State of New Mexico
Energy, Minerals and Natural Resources
Oil Conservation Division
1220 S. St Francis Dr.
Santa Fe, NM 87505

QUESTIONS, Page 4

Action 325908

QUESTIONS (continued)

Operator: DEVON ENERGY PRODUCTION COMPANY, LP 333 West Sheridan Ave. Oklahoma City, OK 73102	OGRID:	6137
	Action Number:	325908
	Action Type:	[C-141] Remediation Closure Request C-141 (C-141-v-Closure)

QUESTIONS

Remediation Plan (continued)	
<i>Please answer all the questions that apply or are indicated. This information must be provided to the appropriate district office no later than 90 days after the release discovery date.</i>	
This remediation will (or is expected to) utilize the following processes to remediate / reduce contaminants:	
<i>(Select all answers below that apply.)</i>	
Is (or was) there affected material present needing to be removed	Yes
Is (or was) there a power wash of the lined containment area (to be) performed	Yes
OTHER (Non-listed remedial process)	No
<i>Per Subsection B of 19.15.29.11 NMAC unless the site characterization report includes completed efforts at remediation, the report must include a proposed remediation plan in accordance with 19.15.29.12 NMAC, which includes the anticipated timelines for beginning and completing the remediation.</i>	
I hereby certify that the information given above is true and complete to the best of my knowledge and understand that pursuant to OCD rules and regulations all operators are required to report and/or file certain release notifications and perform corrective actions for releases which may endanger public health or the environment. The acceptance of a C-141 report by the OCD does not relieve the operator of liability should their operations have failed to adequately investigate and remediate contamination that pose a threat to groundwater, surface water, human health or the environment. In addition, OCD acceptance of a C-141 report does not relieve the operator of responsibility for compliance with any other federal, state, or local laws and/or regulations.	
I hereby agree and sign off to the above statement	Name: Dale Woodall Title: EHS Professional Email: Dale.Woodall@dmn.com Date: 03/22/2024
<i>The OCD recognizes that proposed remediation measures may have to be minimally adjusted in accordance with the physical realities encountered during remediation. If the responsible party has any need to significantly deviate from the remediation plan proposed, then it should consult with the division to determine if another remediation plan submission is required.</i>	

District I

1625 N. French Dr., Hobbs, NM 88240
Phone:(575) 393-6161 Fax:(575) 393-0720

District II

811 S. First St., Artesia, NM 88210
Phone:(575) 748-1283 Fax:(575) 748-9720

District III

1000 Rio Brazos Rd., Aztec, NM 87410
Phone:(505) 334-6178 Fax:(505) 334-6170

District IV

1220 S. St Francis Dr., Santa Fe, NM 87505
Phone:(505) 476-3470 Fax:(505) 476-3462

State of New Mexico
Energy, Minerals and Natural Resources
Oil Conservation Division
1220 S. St Francis Dr.
Santa Fe, NM 87505

QUESTIONS, Page 6

Action 325908

QUESTIONS (continued)

Operator: DEVON ENERGY PRODUCTION COMPANY, LP 333 West Sheridan Ave. Oklahoma City, OK 73102	OGRID:	6137
	Action Number:	325908
	Action Type:	[C-141] Remediation Closure Request C-141 (C-141-v-Closure)

QUESTIONS

Liner Inspection Information	
Last liner inspection notification (C-141L) recorded	322695
Liner inspection date pursuant to Subparagraph (a) of Paragraph (5) of Subsection A of 19.15.29.11 NMAC	03/15/2024
Was all the impacted materials removed from the liner	Yes
What was the liner inspection surface area in square feet	5072

Remediation Closure Request

Only answer the questions in this group if seeking remediation closure for this release because all remediation steps have been completed.

Requesting a remediation closure approval with this submission	Yes
Have the lateral and vertical extents of contamination been fully delineated	Yes
Was this release entirely contained within a lined containment area	Yes
What was the total surface area (in square feet) remediated	0
What was the total volume (cubic yards) remediated	0
Summarize any additional remediation activities not included by answers (above)	see report

The responsible party must attach information demonstrating they have complied with all applicable closure requirements and any conditions or directives of the OCD. This demonstration should be in the form of a comprehensive report (in .pdf format) including a scaled site map, sampling diagrams, relevant field notes, photographs of any excavation prior to backfilling, laboratory data including chain of custody documents of final sampling, and a narrative of the remedial activities. Refer to 19.15.29.12 NMAC.

I hereby certify that the information given above is true and complete to the best of my knowledge and understand that pursuant to OCD rules and regulations all operators are required to report and/or file certain release notifications and perform corrective actions for releases which may endanger public health or the environment. The acceptance of a C-141 report by the OCD does not relieve the operator of liability should their operations have failed to adequately investigate and remediate contamination that pose a threat to groundwater, surface water, human health or the environment. In addition, OCD acceptance of a C-141 report does not relieve the operator of responsibility for compliance with any other federal, state, or local laws and/or regulations. The responsible party acknowledges they must substantially restore, reclaim, and re-vegetate the impacted surface area to the conditions that existed prior to the release or their final land use in accordance with 19.15.29.13 NMAC including notification to the OCD when reclamation and re-vegetation are complete.

I hereby agree and sign off to the above statement	Name: Dale Woodall Title: EHS Professional Email: Dale.Woodall@dmn.com Date: 03/22/2024
--	--

District I
1625 N. French Dr., Hobbs, NM 88240
Phone:(575) 393-6161 Fax:(575) 393-0720
District II
811 S. First St., Artesia, NM 88210
Phone:(575) 748-1283 Fax:(575) 748-9720
District III
1000 Rio Brazos Rd., Aztec, NM 87410
Phone:(505) 334-6178 Fax:(505) 334-6170
District IV
1220 S. St Francis Dr., Santa Fe, NM 87505
Phone:(505) 476-3470 Fax:(505) 476-3462

State of New Mexico
Energy, Minerals and Natural Resources
Oil Conservation Division
1220 S. St Francis Dr.
Santa Fe, NM 87505

CONDITIONS

Action 325908

CONDITIONS

Operator: DEVON ENERGY PRODUCTION COMPANY, LP 333 West Sheridan Ave. Oklahoma City, OK 73102	OGRID: 6137
	Action Number: 325908
	Action Type: [C-141] Remediation Closure Request C-141 (C-141-v-Closure)

CONDITIONS

Created By	Condition	Condition Date
amaxwell	None	3/25/2024