

OCD Permitting

Home Operator Data Action Status Action Search Results Action Status Item Details

[C-141] Initial C-141 (C-141-V-INITIAL) Application

Submission Information

Submission ID:	317187	Districts:	Artesia
Operator:	[162683] CIMAREX ENERGY CO. OF COLORADO	Counties:	Eddy
Description:	CIMAREX ENERGY CO. OF COLORADO [162683] , Intrepid 3 Federal Com 1H , nAPP2405622437		
Status:	APPROVED		
Status Date:	02/26/2024		
References (2):	fAPP2202542365, nAPP2405622437		

Forms

Attachments: [Volume Calculation](#)

Questions

Prerequisites

Incident ID (n#)	nAPP2405622437
Incident Name	NAPP2405622437 INTREPID 3 FEDERAL COM 1H @ 0
Incident Type	Produced Water Release
Incident Status	Initial C-141 Received
Incident Facility	[fAPP2202542365] INTREPID 3 FEDERAL 1

Location of Release Source

Please answer all the questions in this group.

Site Name	Intrepid 3 Federal Com 1H
Date Release Discovered	02/24/2024
Surface Owner	Federal

Incident Details

Please answer all the questions in this group.

Incident Type	Produced Water Release
Did this release result in a fire or is the result of a fire	No
Did this release result in any injuries	No
Has this release reached or does it have a reasonable probability of reaching a watercourse	No
Has this release endangered or does it have a reasonable probability of endangering public health	No

Nature and Volume of Release

Material(s) released, please answer all that apply below. Any calculations or specific justifications for the volumes provided should be attached to the follow-up C-141 submission.

Crude Oil Released (bbls) Details	Not answered.
Produced Water Released (bbls) Details	Cause: Equipment Failure Pump Produced Water Released: 7 BBL Recovered: 7 BBL Lost: 0 BBL.
Is the concentration of chloride in the produced water >10,000 mg/l	Yes
Condensate Released (bbls) Details	Not answered.
Natural Gas Vented (Mcf) Details	Not answered.
Natural Gas Flared (Mcf) Details	Not answered.
Other Released Details	Not answered.
Are there <div>additional details</div> for the questions above (i.e. any answer containing Other, Specify, Unknown, and/or Fire, or any negative lost amounts)	The seal on a water transfer pump failed, releasing 7 barrels produced water into the lined containment. A vac able to recover all fluids. The containment will be washed and a liner inspection will be scheduled in the comin Released: 7 barrels water (inside containment) Recovered: 7 barrels from containment

Nature and Volume of Release (continued)

Is this a gas only submission (i.e. only significant Mcf values reported)	No, according to supplied volumes this does not appear to be a “gas only” report.
Was this a major release as defined by Subsection A of 19.15.29.7 NMAC	No
Reasons why this would be considered a submission for a notification of a major release	Unavailable.

With the implementation of the 19.15.27 NMAC (05/25/2021), venting and/or flaring of natural gas (i.e. gas only) are to be submitted on the C-129 form.

Initial Response

The responsible party must undertake the following actions immediately unless they could create a safety hazard that would result in injury.

The source of the release has been stopped	True
The impacted area has been secured to protect human health and the environment	True
Released materials have been contained via the use of berms or dikes, absorbent pads, or other containment devices	True
All free liquids and recoverable materials have been removed and managed appropriately	True
If all the actions described above have not been undertaken, explain why	Not answered.

Per Paragraph (4) of Subsection B of 19.15.29.8 NMAC the responsible party may commence remediation immediately after discovery of a release. If remediation has begun, please prepare and attach a narrative of actions to date in the follo If remedial efforts have been successfully completed or if the release occurred within a lined containment area (see Subparagraph (a) of Paragraph (5) of Subsection A of 19.15.29.11 NMAC), please prepare and attach all information needed the follow-up C-141 submission.

I hereby certify that the information given above is true and complete to the best of my knowledge and understand that pursuant to OCD rules and regulations all operators are required to report and/or f notifications and perform corrective actions for releases which may endanger public health or the environment. The acceptance of a C-141 report by the OCD does not relieve the operator of liability shc have failed to adequately investigate and remediate contamination that pose a threat to groundwater, surface water, human health or the environment. In addition, OCD acceptance of a C-141 report do operator of responsibility for compliance with any other federal, state, or local laws and/or regulations.

I hereby agree and sign off to the above statement	Name: Laci Luig Title: ES&H Specialist Email: DL_PermianEnvironmental@coterra.com Date: 02/25/2024
--	---

Site Characterization

Please answer all the questions in this group (only required when seeking remediation plan approval and beyond). This information must be provided to the appropriate district office no later than 90 days after the release discovery date.

What is the shallowest depth to groundwater beneath the area affected by the release in feet below ground surface (ft bgs)	Between 100 and 500 (ft.)
What method was used to determine the depth to ground water	OCD Imaging Records Lookup
Did this release impact groundwater or surface water	No

What is the minimum distance, between the closest lateral extents of the release and the following surface areas:

A continuously flowing watercourse or any other significant watercourse	Between 1 and 5 (mi.)
Any lakebed, sinkhole, or playa lake (measured from the ordinary high-water mark)	Between 1000 (ft.) and ½ (mi.)

A wetland	Between 1000 (ft.) and ½ (mi.)
A subsurface mine	Greater than 5 (mi.)
An (non-karst) unstable area	Zero feet, overlying, or within area
Categorize the risk of this well / site being in a karst geology	High
A 100-year floodplain	Between 1 and 5 (mi.)
Did the release impact areas not on an exploration, development, production, or storage site	No

Remediation Plan

Please answer all the questions that apply or are indicated. This information must be provided to the appropriate district office no later than 90 days after the release discovery date.

Requesting a remediation plan approval with this submission No

The OCD recognizes that proposed remediation measures may have to be minimally adjusted in accordance with the physical realities encountered during remediation. If the responsible party has any need to significantly deviate from the ren then it should consult with the division to determine if another remediation plan submission is required.

Acknowledgments

This submission type does not have acknowledgments, at this time.

Comments

No comments found for this submission.

Conditions

Summary: scwells (2/26/2024), None

Reasons

No reasons found for this submission.

Go Back



CIMAREX ENERGY
INTREPID 3 FEDERAL COM 1H
EDDY, NM

2:22

LTE 90

[< Back](#)

Square/Rectangle Contained Spill with Vessel
Displacement

Intrepid 3 CTB

L(Ft)

W(Ft)

D(In)

Oil %

10

5

4

0

Tank Size (Ft)

Tank Count

Tank OD

Tank Count



H2O Spill Before Disp: 2.97

Tank Displacement Vol: 0.00

Oil Spill Total: 0.00

H2O Spill Total: 2.97

Total Bbls Spilled: 2.97

Total Gals Spilled: 124.67

Screenshot for future reference!

2:22

5G 89

[< Back](#)

Square/Rectangle Contained Spill with Vessel
Displacement

Intrepid 3 CTB

L(Ft)

W(Ft)

D(In)

Oil %

15

15

1

0

Tank Size (Ft)

Tank Count

Tank OD

Tank Count



H2O Spill Before Disp: 3.34

Tank Displacement Vol: 0.00

Oil Spill Total: 0.00

H2O Spill Total: 3.34

Total Bbls Spilled: 3.34

Total Gals Spilled: 140.25

Screenshot for future reference!



CIMAREX ENERGY
INTREPID 3 FEDERAL COM 1H
EDDY, NM

2:23

LTE 89

[< Back](#)

Square/Rectangle Contained Spill with Vessel
Displacement

L(Ft)

W(Ft)

D(In)

Oil %

Tank Size (Ft)

Tank Count

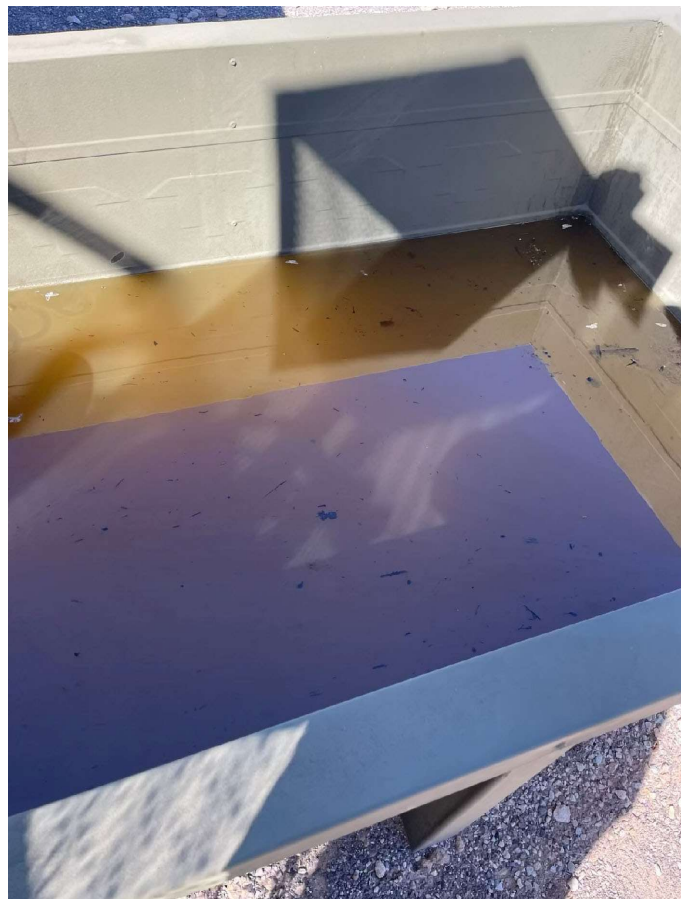


H2O Spill Before Disp:	0.74
Tank Displacement Vol:	0.00
Oil Spill Total:	0.00
H2O Spill Total:	0.74
Total Bbls Spilled:	0.74
Total Gals Spilled:	31.17

Screenshot for future reference!



CIMAREX ENERGY
INTREPID 3 FEDERAL COM 1H
EDDY, NM





CIMAREX ENERGY
INTREPID 3 FEDERAL COM 1H
EDDY, NM





CIMAREX ENERGY
INTREPID 3 FEDERAL COM 1H
EDDY, NM





CIMAREX ENERGY
INTREPID 3 FEDERAL COM 1H
EDDY, NM



District I
1625 N. French Dr., Hobbs, NM 88240
Phone:(575) 393-6161 Fax:(575) 393-0720
District II
811 S. First St., Artesia, NM 88210
Phone:(575) 748-1283 Fax:(575) 748-9720
District III
1000 Rio Brazos Rd., Aztec, NM 87410
Phone:(505) 334-6178 Fax:(505) 334-6170
District IV
1220 S. St Francis Dr., Santa Fe, NM 87505
Phone:(505) 476-3470 Fax:(505) 476-3462

State of New Mexico
Energy, Minerals and Natural Resources
Oil Conservation Division
1220 S. St Francis Dr.
Santa Fe, NM 87505

QUESTIONS

Action 317187

QUESTIONS

Operator: CIMAREX ENERGY CO. OF COLORADO 6001 Deauville Blvd, Ste 300N Midland, TX 79706	OGRID: 162683
	Action Number: 317187
	Action Type: [C-141] Initial C-141 (C-141-v-Initial)

QUESTIONS

Prerequisites	
Incident ID (n#)	nAPP2405622437
Incident Name	NAPP2405622437 INTREPID 3 FEDERAL COM 1H @ 0
Incident Type	Produced Water Release
Incident Status	Initial C-141 Received
Incident Facility	[fAPP2202542365] INTREPID 3 FEDERAL 1

Location of Release Source	
Please answer all the questions in this group.	
Site Name	Intrepid 3 Federal Com 1H
Date Release Discovered	02/24/2024
Surface Owner	Federal

Incident Details	
Please answer all the questions in this group.	
Incident Type	Produced Water Release
Did this release result in a fire or is the result of a fire	No
Did this release result in any injuries	No
Has this release reached or does it have a reasonable probability of reaching a watercourse	No
Has this release endangered or does it have a reasonable probability of endangering public health	No
Has this release substantially damaged or will it substantially damage property or the environment	No
Is this release of a volume that is or may with reasonable probability be detrimental to fresh water	No

Nature and Volume of Release	
Material(s) released, please answer all that apply below. Any calculations or specific justifications for the volumes provided should be attached to the follow-up C-141 submission.	
Crude Oil Released (bbls) Details	Not answered.
Produced Water Released (bbls) Details	Cause: Equipment Failure Pump Produced Water Released: 7 BBL Recovered: 7 BBL Lost: 0 BBL.
Is the concentration of chloride in the produced water >10,000 mg/l	Yes
Condensate Released (bbls) Details	Not answered.
Natural Gas Vented (Mcf) Details	Not answered.
Natural Gas Flared (Mcf) Details	Not answered.
Other Released Details	Not answered.
Are there additional details for the questions above (i.e. any answer containing Other, Specify, Unknown, and/or Fire, or any negative lost amounts)	The seal on a water transfer pump failed, releasing 7 barrels produced water into the lined containment. A vacuum truck was able to recover all fluids. The containment will be washed and a liner inspection will be scheduled in the coming weeks. Released: 7 barrels water (inside containment) Recovered: 7 barrels from containment

District I

1625 N. French Dr., Hobbs, NM 88240
Phone:(575) 393-6161 Fax:(575) 393-0720

District II

811 S. First St., Artesia, NM 88210
Phone:(575) 748-1283 Fax:(575) 748-9720

District III

1000 Rio Brazos Rd., Aztec, NM 87410
Phone:(505) 334-6178 Fax:(505) 334-6170

District IV

1220 S. St Francis Dr., Santa Fe, NM 87505
Phone:(505) 476-3470 Fax:(505) 476-3462

State of New Mexico
Energy, Minerals and Natural Resources
Oil Conservation Division
1220 S. St Francis Dr.
Santa Fe, NM 87505

QUESTIONS, Page 2

Action 317187

QUESTIONS (continued)

Operator: CIMAREX ENERGY CO. OF COLORADO 6001 Deauville Blvd, Ste 300N Midland, TX 79706	OGRID: 162683
	Action Number: 317187
	Action Type: [C-141] Initial C-141 (C-141-v-Initial)

QUESTIONS

Nature and Volume of Release (continued)	
Is this a gas only submission (i.e. only significant Mcf values reported)	No, according to supplied volumes this does not appear to be a "gas only" report.
Was this a major release as defined by Subsection A of 19.15.29.7 NMAC	No
Reasons why this would be considered a submission for a notification of a major release	<i>Unavailable.</i>
<i>With the implementation of the 19.15.27 NMAC (05/25/2021), venting and/or flaring of natural gas (i.e. gas only) are to be submitted on the C-129 form.</i>	

Initial Response

The responsible party must undertake the following actions immediately unless they could create a safety hazard that would result in injury.

The source of the release has been stopped	True
The impacted area has been secured to protect human health and the environment	True
Released materials have been contained via the use of berms or dikes, absorbent pads, or other containment devices	True
All free liquids and recoverable materials have been removed and managed appropriately	True
If all the actions described above have not been undertaken, explain why	<i>Not answered.</i>

Per Paragraph (4) of Subsection B of 19.15.29.8 NMAC the responsible party may commence remediation immediately after discovery of a release. If remediation has begun, please prepare and attach a narrative of actions to date in the follow-up C-141 submission. If remedial efforts have been successfully completed or if the release occurred within a lined containment area (see Subparagraph (a) of Paragraph (5) of Subsection A of 19.15.29.11 NMAC), please prepare and attach all information needed for closure evaluation in the follow-up C-141 submission.

I hereby certify that the information given above is true and complete to the best of my knowledge and understand that pursuant to OCD rules and regulations all operators are required to report and/or file certain release notifications and perform corrective actions for releases which may endanger public health or the environment. The acceptance of a C-141 report by the OCD does not relieve the operator of liability should their operations have failed to adequately investigate and remediate contamination that pose a threat to groundwater, surface water, human health or the environment. In addition, OCD acceptance of a C-141 report does not relieve the operator of responsibility for compliance with any other federal, state, or local laws and/or regulations.

I hereby agree and sign off to the above statement	Name: Laci Luig Title: ES&H Specialist Email: DL_PermianEnvironmental@coterra.com Date: 02/25/2024
--	---

District I
1625 N. French Dr., Hobbs, NM 88240
Phone:(575) 393-6161 Fax:(575) 393-0720

District II
811 S. First St., Artesia, NM 88210
Phone:(575) 748-1283 Fax:(575) 748-9720

District III
1000 Rio Brazos Rd., Aztec, NM 87410
Phone:(505) 334-6178 Fax:(505) 334-6170

District IV
1220 S. St Francis Dr., Santa Fe, NM 87505
Phone:(505) 476-3470 Fax:(505) 476-3462

State of New Mexico
Energy, Minerals and Natural Resources
Oil Conservation Division
1220 S. St Francis Dr.
Santa Fe, NM 87505

QUESTIONS, Page 3

Action 317187

QUESTIONS (continued)

Operator: CIMAREX ENERGY CO. OF COLORADO 6001 Deauville Blvd, Ste 300N Midland, TX 79706	OGRID: 162683
	Action Number: 317187
	Action Type: [C-141] Initial C-141 (C-141-v-Initial)

QUESTIONS

Site Characterization

Please answer all the questions in this group (only required when seeking remediation plan approval and beyond). This information must be provided to the appropriate district office no later than 90 days after the release discovery date.

What is the shallowest depth to groundwater beneath the area affected by the release in feet below ground surface (ft bgs)	Between 100 and 500 (ft.)
What method was used to determine the depth to ground water	OCD Imaging Records Lookup
Did this release impact groundwater or surface water	No

What is the minimum distance, between the closest lateral extents of the release and the following surface areas:

A continuously flowing watercourse or any other significant watercourse	Between 1 and 5 (mi.)
Any lakebed, sinkhole, or playa lake (measured from the ordinary high-water mark)	Between 1000 (ft.) and ½ (mi.)
An occupied permanent residence, school, hospital, institution, or church	Greater than 5 (mi.)
A spring or a private domestic fresh water well used by less than five households for domestic or stock watering purposes	Greater than 5 (mi.)
Any other fresh water well or spring	Between 1 and 5 (mi.)
Incorporated municipal boundaries or a defined municipal fresh water well field	Greater than 5 (mi.)
A wetland	Between 1000 (ft.) and ½ (mi.)
A subsurface mine	Greater than 5 (mi.)
An (non-karst) unstable area	Zero feet, overlying, or within area
Categorize the risk of this well / site being in a karst geology	High
A 100-year floodplain	Between 1 and 5 (mi.)
Did the release impact areas not on an exploration, development, production, or storage site	No

Remediation Plan

Please answer all the questions that apply or are indicated. This information must be provided to the appropriate district office no later than 90 days after the release discovery date.

Requesting a remediation plan approval with this submission	No
---	----

The OCD recognizes that proposed remediation measures may have to be minimally adjusted in accordance with the physical realities encountered during remediation. If the responsible party has any need to significantly deviate from the remediation plan proposed, then it should consult with the division to determine if another remediation plan submission is required.

District I
1625 N. French Dr., Hobbs, NM 88240
Phone:(575) 393-6161 Fax:(575) 393-0720
District II
811 S. First St., Artesia, NM 88210
Phone:(575) 748-1283 Fax:(575) 748-9720
District III
1000 Rio Brazos Rd., Aztec, NM 87410
Phone:(505) 334-6178 Fax:(505) 334-6170
District IV
1220 S. St Francis Dr., Santa Fe, NM 87505
Phone:(505) 476-3470 Fax:(505) 476-3462

State of New Mexico
Energy, Minerals and Natural Resources
Oil Conservation Division
1220 S. St Francis Dr.
Santa Fe, NM 87505

CONDITIONS

Action 317187

CONDITIONS

Operator: CIMAREX ENERGY CO. OF COLORADO 6001 Deauville Blvd, Ste 300N Midland, TX 79706	OGRID: 162683
	Action Number: 317187
	Action Type: [C-141] Initial C-141 (C-141-v-Initial)

CONDITIONS

Created By	Condition	Condition Date
scwells	None	2/26/2024



Liner Integrity Certification

The following serves to verify that the affected liner has been inspected and found to be in serviceable condition in accordance with 19.15.29.11 A.(5)(a)(i-ii) of the New Mexico Administrative Code.

Facility ID: fAPP2202542365

Date: 2/24/2024

Incident ID(s): nAPP2405622437

- ☒ Responsible Party has visually inspected the liner.
- ☒ Liner remains intact and was able to contain the leak in question.
- ☒ At least two business days' notice was given to the appropriate division district office before conducting the liner inspection.
- ☒ Photographs illustrating liner integrity are included.

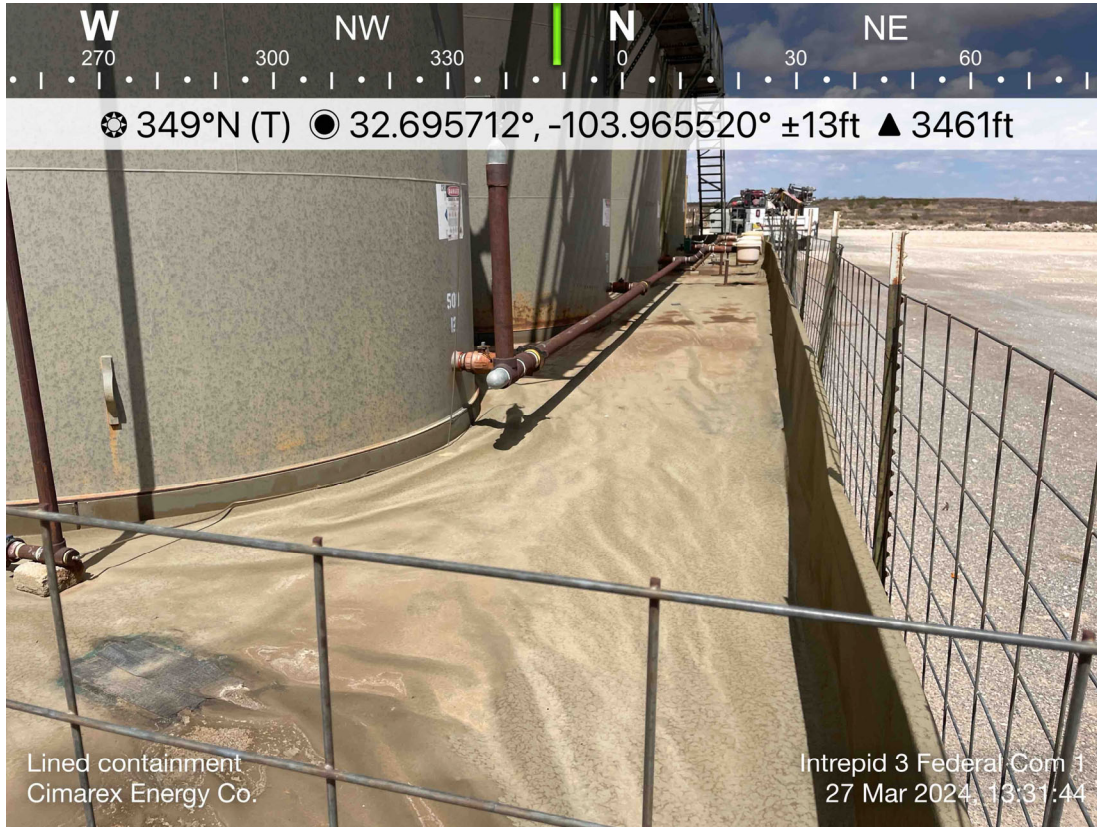


CIMAREX ENERGY
INTREPID 3 FEDERAL COM 1
EDDY, NM



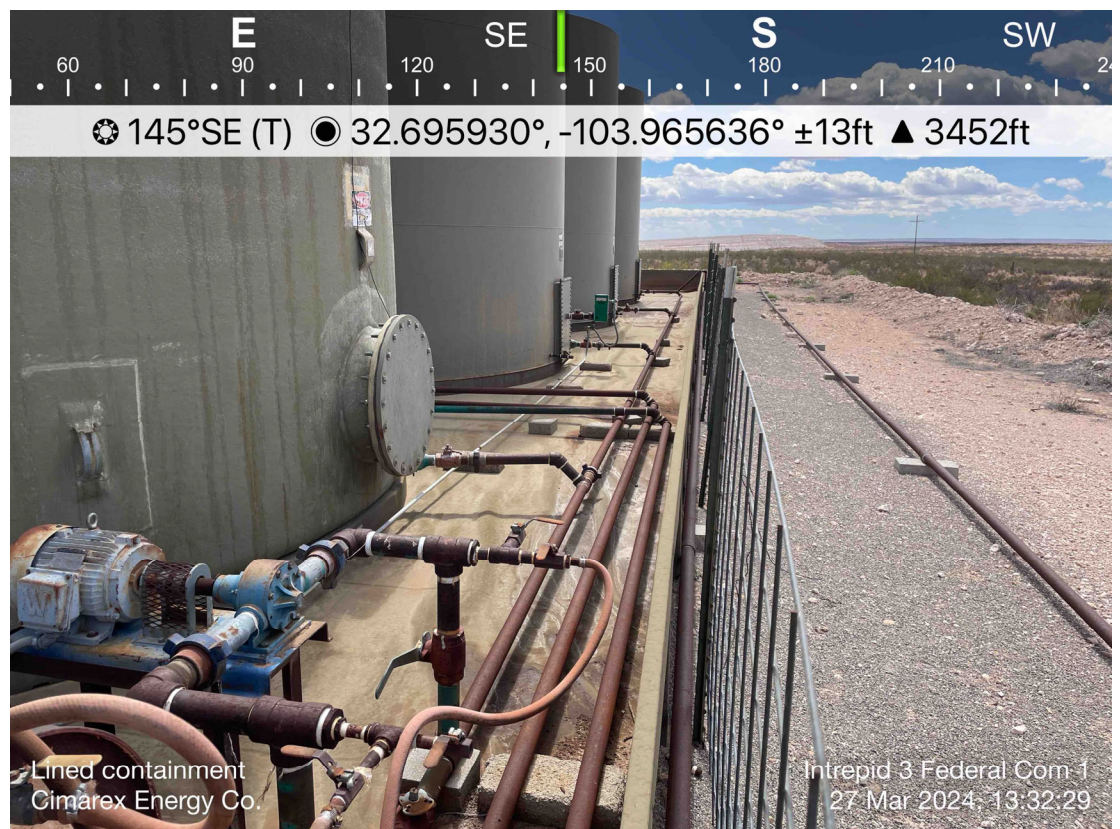
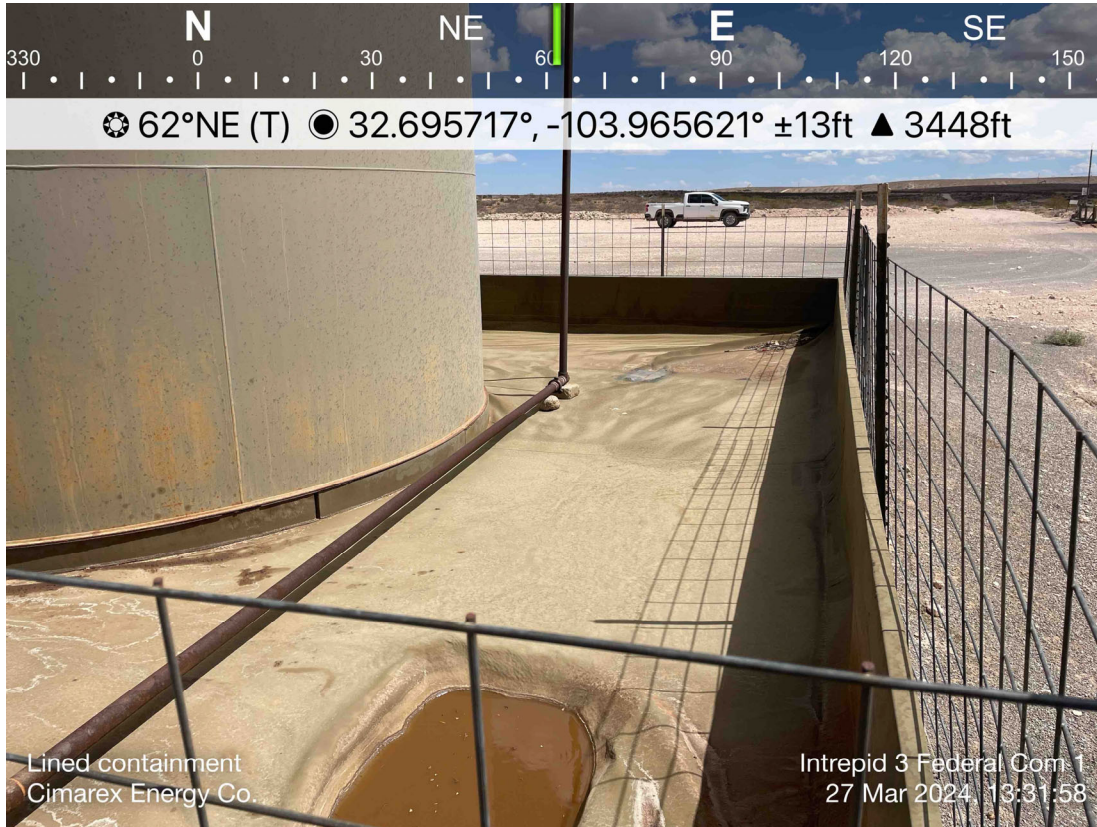


CIMAREX ENERGY
INTREPID 3 FEDERAL COM 1
EDDY, NM



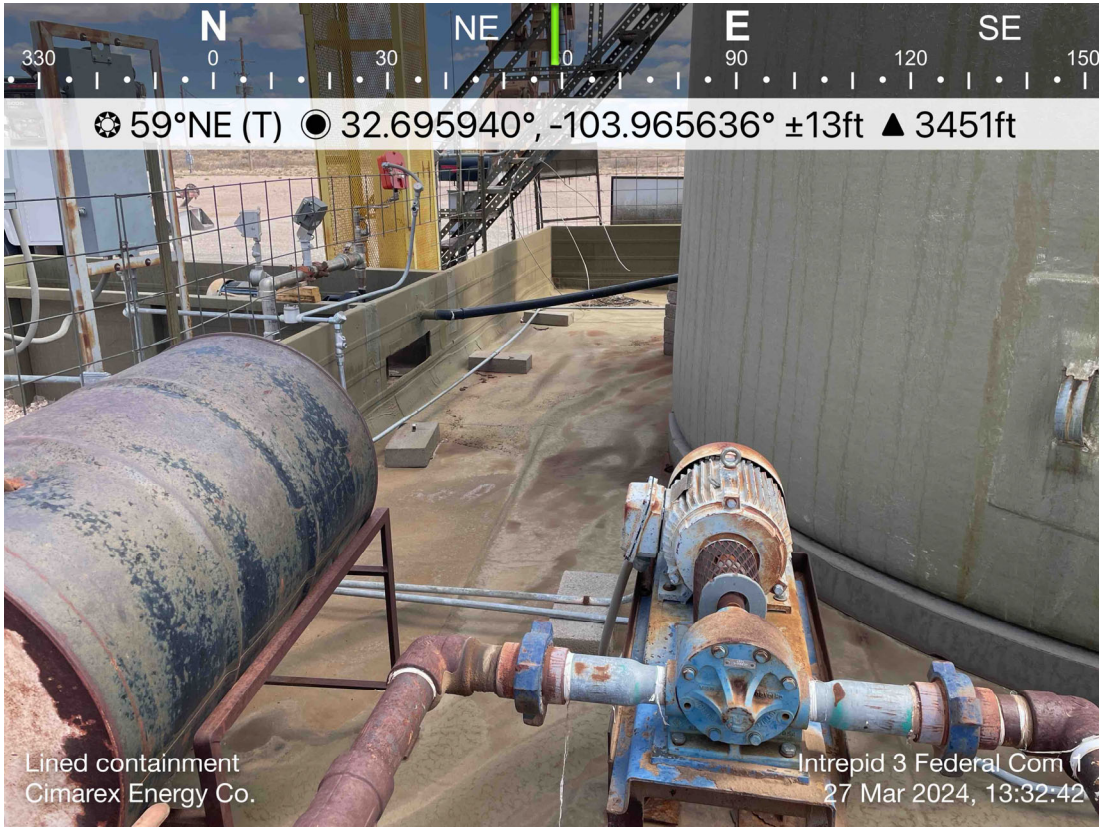


CIMAREX ENERGY
INTREPID 3 FEDERAL COM 1
EDDY, NM





CIMAREX ENERGY
INTREPID 3 FEDERAL COM 1
EDDY, NM





CIMAREX ENERGY
INTREPID 3 FEDERAL COM 1
EDDY, NM



Site map

CIMAREX ENERGY CO. OF COLORADO

Legend

- Intrepid 3 Federal Com 1H (02.24.2024)
- Lined Containment Area

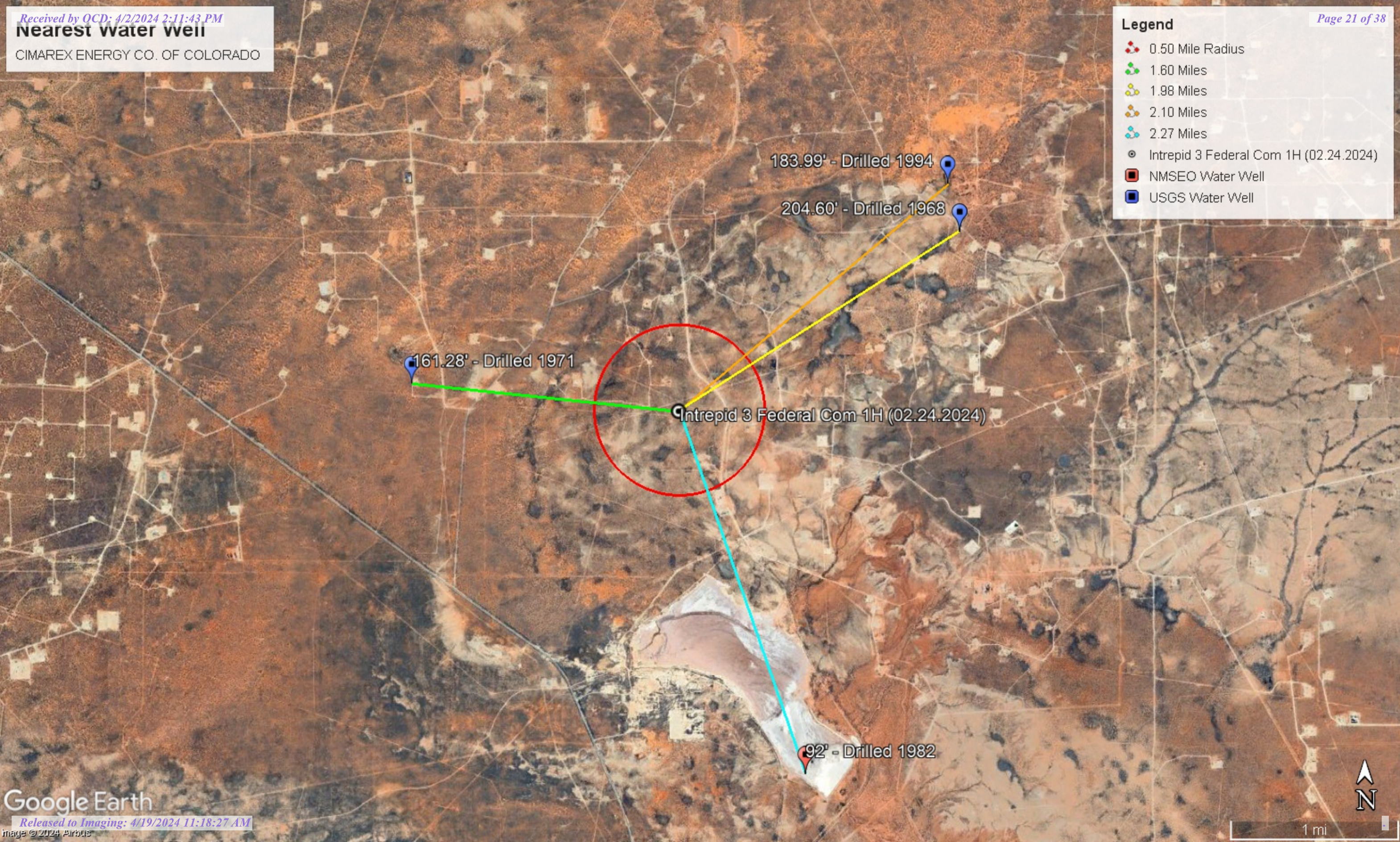


Nearest water well

CIMAREX ENERGY CO. OF COLORADO

Legend

- 0.50 Mile Radius
- 1.60 Miles
- 1.98 Miles
- 2.10 Miles
- 2.27 Miles
- Intrepid 3 Federal Com 1H (02.24.2024)
- NMSEO Water Well
- USGS Water Well



High Karst

CIMAREX ENERGY CO. OF COLORADO

Legend

- High
- Intrepid 3 Federal Com 1H (02.24.2024)
- Low
- Medium

Intrepid 3 Federal Com 1H (02.24.2024)





New Mexico Office of the State Engineer

Water Column/Average Depth to Water

(A CLW##### in the
POD suffix indicates the
POD has been replaced
& no longer serves a
water right file.)

(R=POD has
been replaced,
O=orphaned,
C=the file is
closed)

(quarters are 1=NW 2=NE 3=SW 4=SE)
(quarters are smallest to largest)

(NAD83 UTM in meters)

(In feet)

POD Number	POD Sub-Code	basin	County	Q 64	Q 16	Q 4	Sec	Tws	Rng	X	Y	Distance	Depth Well	Depth Water	Water Column
CP 00819 POD1	CP	LE		2	4	32	18S	30E		594878	3618720*	2220	150		
CP 00853 POD1	O	CP	ED	2	4	28	18S	30E		596472	3620340*	2336	350		
CP 00767 POD1	CP	ED		3	2	35	18S	30E		599300	3619158*	2547	500		
CP 00818 POD1	CP	LE		1	4	26	18S	30E		599289	3620364*	3245	240		
CP 00647 POD1	O	CP	ED	4	2	2	15	19S	30E	598235	3614621*	3657	200	92	108

Average Depth to Water: 92 feet

Minimum Depth: 92 feet

Maximum Depth: 92 feet

Record Count: 5

UTMNAD83 Radius Search (in meters):

Easting (X): 596999.52

Northing (Y): 3618063.63

Radius: 4000

*UTM location was derived from PLSS - see Help

The data is furnished by the NMOSE/ISC and is accepted by the recipient with the expressed understanding that the OSE/ISC make no warranties, expressed or implied, concerning the accuracy, completeness, reliability, usability, or suitability for any particular purpose of the data.



USGS Home
Contact USGS
Search USGS

National Water Information System: Web Interface

USGS Water Resources

Data Category:
Groundwater

Geographic Area:
New Mexico

GO

Click to hideNews Bulletins

- Explore the *NEW* [USGS National Water Dashboard](#) interactive map to access real-time water data from over 13,500 stations nationwide.
- [Full News](#)

Groundwater levels for New Mexico

Click to hide state-specific text

Important: [Next Generation Monitoring Location Page](#)

Search Results -- 1 sites found

Agency code = usgs
site_no list =

- 324154103593301

Minimum number of levels = 1
[Save file of selected sites](#) to local disk for future upload

USGS 324154103593301 18S.30E.32.32422

Eddy County, New Mexico
Latitude 32°41'54", Longitude 103°59'33" NAD27
Land-surface elevation 3,374 feet above NAVD88
This well is completed in the Other aquifers (N9999OTHER) national aquifer.
This well is completed in the Chinle Formation (231CHNL) local aquifer.

Output formats

Table of data
Tab-separated data
Graph of data
Reselect period

Date	Time	? Water-level date-time accuracy	? Parameter code	Water level, feet below land surface	Water level, feet above specific vertical datum	Referenced vertical datum	? Status	? Method of measurement	? Measuring agency	? Source of measurement
1968-03-08			D	62610	3208.02	NGVD29	1	Z		
1968-03-08			D	62611	3209.55	NAVD88	1	Z		
1968-03-08			D	72019	164.45		1	Z		
1971-04-08			D	62610	3211.19	NGVD29	1	Z		
1971-04-08			D	62611	3212.72	NAVD88	1	Z		
1971-04-08			D	72019	161.28		1	Z		

Explanation

Section	Code	Description
Water-level date-time accuracy	D	Date is accurate to the Day
Parameter code	62610	Groundwater level above NGVD 1929, feet
Parameter code	62611	Groundwater level above NAVD 1988, feet
Parameter code	72019	Depth to water level, feet below land surface

Section	Code	Description
Referenced vertical datum	NAVD88	North American Vertical Datum of 1988
Referenced vertical datum	NGVD29	National Geodetic Vertical Datum of 1929
Status	1	Static
Method of measurement	Z	Other.
Measuring agency		Not determined
Source of measurement		Not determined
Water-level approval status	A	Approved for publication -- Processing and review completed.

- [Questions or Comments](#)
[Automated retrievals](#)
[Help](#)
[Data Tips](#)
[Explanation of terms](#)
[Subscribe for system changes](#)
[News](#)

[Accessibility](#) [FOIA](#) [Privacy](#) [Policies and Notices](#)
[U.S. Department of the Interior](#) | [U.S. Geological Survey](#)
Title: Groundwater for New Mexico: Water Levels
URL: <https://nwis.waterdata.usgs.gov/nm/nwis/gwlevels?>



Page Contact Information: [New Mexico Water Data Maintainer](#)
Page Last Modified: 2024-04-02 12:09:22 EDT
0.33 0.26 nadww02



USGS Home
Contact USGS
Search USGS

National Water Information System: Web Interface

USGS Water Resources

Data Category:
Groundwater

Geographic Area:
New Mexico

GO

Click to hideNews Bulletins

- Explore the NEW [USGS National Water Dashboard](#) interactive map to access real-time water data from over 13,500 stations nationwide.
- [Full News](#)

Groundwater levels for New Mexico

Click to hide state-specific text

Important: [Next Generation Monitoring Location Page](#)

Search Results -- 1 sites found

Agency code = usgs
site_no list =

- 324241103561201

Minimum number of levels = 1

[Save file of selected sites](#) to local disk for future upload

USGS 324241103561201 18S.30E.26.4140

Eddy County, New Mexico
Latitude 32°42'41", Longitude 103°56'12" NAD27
Land-surface elevation 3,432 feet above NAVD88
The depth of the well is 230 feet below land surface.
This well is completed in the Other aquifers (N9999OTHER) national aquifer.
This well is completed in the Chinle Formation (231CHNL) local aquifer.

Output formats

Table of data
Tab-separated data
Graph of data
Reselect period

Date	Time	? Water-level date-time accuracy	? Parameter code	Water level, feet below land surface	Water level, feet above specific vertical datum	Referenced vertical datum	? Status	? Method of measurement	? Measuring agency	? Source of measurement
1968-03-07			D	62610	3225.86	NGVD29	1	Z		
1968-03-07			D	62611	3227.40	NAVD88	1	Z		
1968-03-07			D	72019	204.60		1	Z		

Explanation

Section	Code	Description
Water-level date-time accuracy	D	Date is accurate to the Day
Parameter code	62610	Groundwater level above NGVD 1929, feet
Parameter code	62611	Groundwater level above NAVD 1988, feet
Parameter code	72019	Depth to water level, feet below land surface
Referenced vertical datum	NAVD88	North American Vertical Datum of 1988
Referenced vertical datum	NGVD29	National Geodetic Vertical Datum of 1929
Status	1	Static

Section	Code	Description
Method of measurement	Z	Other.
Measuring agency		Not determined
Source of measurement		Not determined
Water-level approval status	A	Approved for publication -- Processing and review completed.

[Questions or Comments](#)
[Automated retrievals](#)
[Help](#)
[Data Tips](#)
[Explanation of terms](#)
[Subscribe for system changes](#)
[News](#)


[Accessibility](#) [FOIA](#) [Privacy](#) [Policies and Notices](#)
[U.S. Department of the Interior](#) | [U.S. Geological Survey](#)
Title: Groundwater for New Mexico: Water Levels
URL: <https://nwis.waterdata.usgs.gov/nm/nwis/gwlevels?>



Page Contact Information: [New Mexico Water Data Maintainer](#)
Page Last Modified: 2024-04-02 12:14:22 EDT
0.31 0.27 nadww01

Date	Time	? Water-level date-time accuracy	? Parameter code	Water level, feet below land surface	Water level, feet above specific vertical datum	Referenced vertical datum	? S
				Groundwater	New Mexico	GO	

Click to hideNews Bulletins

- Explore the NEW [USGS National Water Dashboard](#) interactive map to access real-time water data from over 13,500 stations nationwide.
- [Full News](#) 

Groundwater levels for New Mexico

Click to hide state-specific text

 Important: [Next Generation Monitoring Location Page](#)

Search Results -- 1 sites found

Agency code = usgs
site_no list =

- 324244103561601

Minimum number of levels = 1
[Save file of selected sites](#) to local disk for future upload

USGS 324244103561601 18S.30E.26.414144

Eddy County, New Mexico
Latitude 32°42'55.8", Longitude 103°56'16.4" NAD83
Land-surface elevation 3,431 feet above NAVD88
This well is completed in the Other aquifers (N9999OTHER) national aquifer.
This well is completed in the Chinle Formation (231CHNL) local aquifer.

Output formats

Table of data
Tab-separated data
Graph of data
Reselect period

Date	Time	? Water-level date-time accuracy	? Parameter code	Water level, feet below land surface	Water level, feet above specific vertical datum	Referenced vertical datum	? Status	? Method of measurement	? Measuring agency	? Source of measurement
1976-05-28			D 62610		3235.07	NGVD29	1		Z	
1976-05-28			D 62611		3236.61	NAVD88	1		Z	
1976-05-28			D 72019	194.39			1		Z	
1983-04-12			D 62610		3243.42	NGVD29	1		Z	
1983-04-12			D 62611		3244.96	NAVD88	1		Z	
1983-04-12			D 72019	186.04			1		Z	
1990-10-10			D 62610		3246.44	NGVD29	1		S	
1990-10-10			D 62611		3247.98	NAVD88	1		S	
1990-10-10			D 72019	183.02			1		S	
1994-03-16			D 62610		3245.47	NGVD29	1		S	
1994-03-16			D 62611		3247.01	NAVD88	1		S	
1994-03-16			D 72019	183.99			1		S	

Explanation

Date	Time	?	?	Water level, feet below land surface	Water level, feet above specific vertical datum	Referenced vertical datum	?
		Water-level date-time accuracy	Parameter code				S
Parameter code		72019	Depthn to water level, feet below land surface				
Referenced vertical datum		NAVD88	North American Vertical Datum of 1988				
Referenced vertical datum		NGVD29	National Geodetic Vertical Datum of 1929				
Status		1	Static				
Method of measurement		S	Steel-tape measurement.				
Method of measurement		Z	Other.				
Measuring agency			Not determined				
Source of measurement			Not determined				
Water-level approval status		A	Approved for publication -- Processing and review completed.				

[Questions or Comments](#)
[Automated retrievals](#)
[Help](#)
[Data Tips](#)
[Explanation of terms](#)
[Subscribe for system changes](#)
[News](#)

[Accessibility](#) [FOIA](#) [Privacy](#) [Policies and Notices](#)
[U.S. Department of the Interior](#) | [U.S. Geological Survey](#)
Title: Groundwater for New Mexico: Water Levels
URL: <https://nwis.waterdata.usgs.gov/nm/nwis/gwlevels?>




Page Contact Information: [New Mexico Water Data Maintainer](#)
Page Last Modified: 2024-04-02 12:15:21 EDT
0.27 0.24 nadww01



New Mexico Office of the State Engineer

Point of Diversion Summary

		(quarters are 1=NW 2=NE 3=SW 4=SE)				(quarters are smallest to largest)				(NAD83 UTM in meters)			
Well Tag	POD Number	Q64	Q16	Q4	Sec	Tws	Rng	X	Y				
	CP 00647 POD1	4	2	2	15	19S	30E	598235	3614621*				
x													
Driller License:		406			Driller Company:			TIDWELL, CLYDE J.					
Driller Name:		CLYDE J. TIDWELL											
Drill Start Date:		02/08/1982			Drill Finish Date:			02/18/1982		Plug Date:			
Log File Date:		02/22/1982			PCW Rcv Date:						Source:		Shallow
Pump Type:					Pipe Discharge Size:						Estimated Yield:		
Casing Size:					Depth Well:			200 feet		Depth Water:		92 feet	
x													
Water Bearing Stratifications:					Top	Bottom	Description						
					115	140	Other/Unknown						
x													
Casing Perforations:					Top	Bottom							
					115	140							

*UTM location was derived from PLSS - see Help

The data is furnished by the NMOSE/ISC and is accepted by the recipient with the expressed understanding that the OSE/ISC make no warranties, expressed or implied, concerning the accuracy, completeness, reliability, usability, or suitability for any particular purpose of the data.

4/2/24 10:12 AM

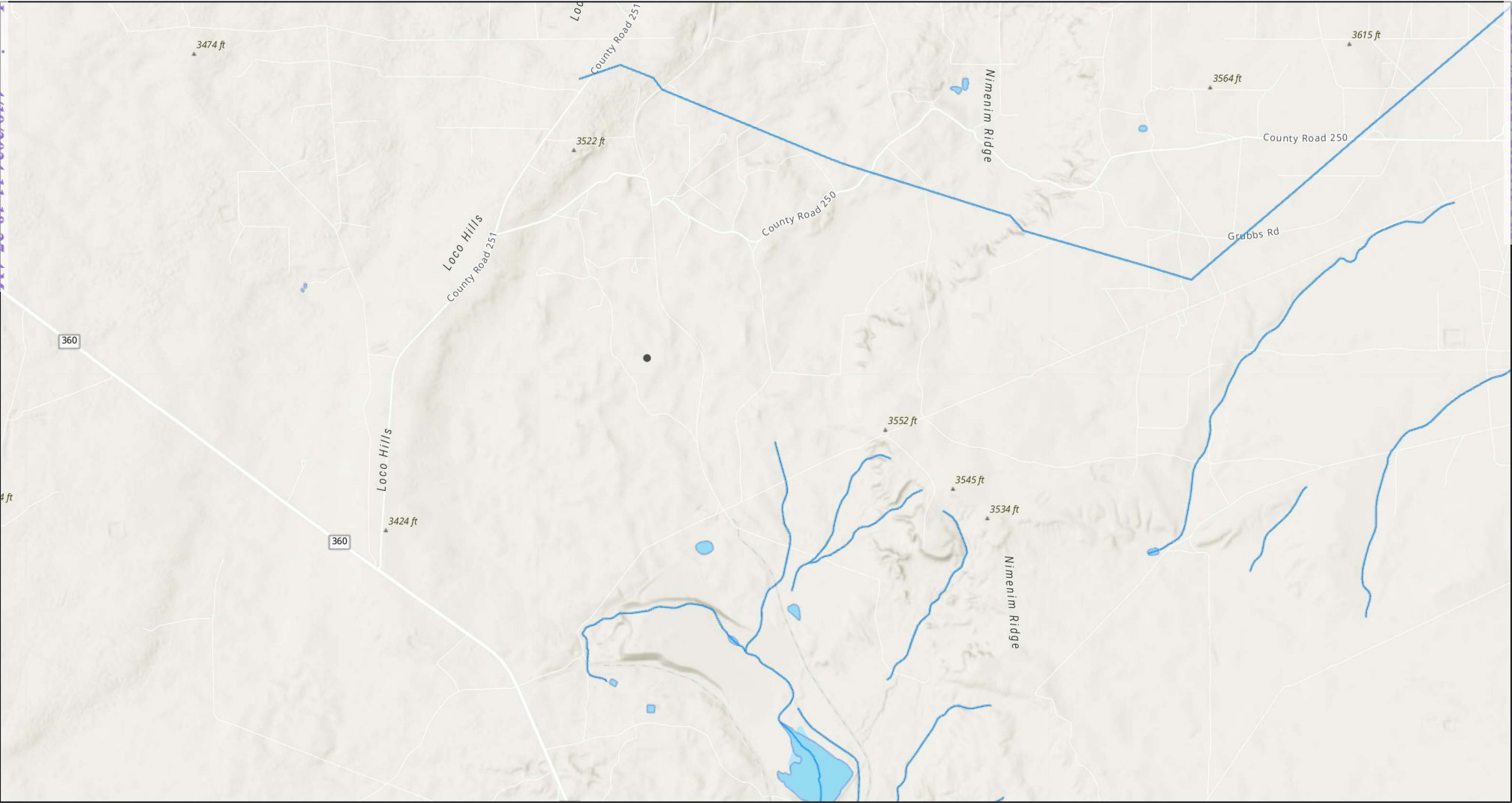
POINT OF DIVERSION SUMMARY

FEMA National Flood Hazard Layer (NFHL)



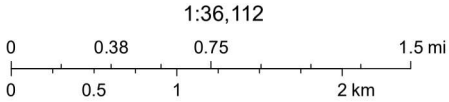
Bureau of Land Management, Texas Parks & Wildlife, Esri, HERE, Garmin, INCREMENT P, USGS, METI/NASA, EPA, USDA

Intrepid 3 Federal Com 1H (02.24.2024)



4/2/2024, 11:07:16 AM

- OSW Water Bodys
- OSE Streams



Esri, NASA, NGA, USGS, FEMA, Texas Parks & Wildlife, CONANP, Esri, TomTom, Garmin, SafeGraph, GeoTechnologies, Inc, METI/NASA, USGS, EPA, NPS, US Census Bureau, USDA, USFWS, NM OSE

District I
1625 N. French Dr., Hobbs, NM 88240
Phone:(575) 393-6161 Fax:(575) 393-0720
District II
811 S. First St., Artesia, NM 88210
Phone:(575) 748-1283 Fax:(575) 748-9720
District III
1000 Rio Brazos Rd., Aztec, NM 87410
Phone:(505) 334-6178 Fax:(505) 334-6170
District IV
1220 S. St Francis Dr., Santa Fe, NM 87505
Phone:(505) 476-3470 Fax:(505) 476-3462

State of New Mexico
Energy, Minerals and Natural Resources
Oil Conservation Division
1220 S. St Francis Dr.
Santa Fe, NM 87505

QUESTIONS

Action 329055

QUESTIONS

Operator: CIMAREX ENERGY CO. OF COLORADO 6001 Deauville Blvd Midland, TX 79706	OGRID:	162683
	Action Number:	329055
	Action Type:	[C-141] Remediation Closure Request C-141 (C-141-v-Closure)

QUESTIONS

Prerequisites	
Incident ID (n#)	nAPP2405622437
Incident Name	NAPP2405622437 INTREPID 3 FEDERAL COM 1H @ 0
Incident Type	Produced Water Release
Incident Status	Remediation Closure Report Received
Incident Facility	[fAPP2202542365] INTREPID 3 FEDERAL 1

Location of Release Source	
Please answer all the questions in this group.	
Site Name	Intrepid 3 Federal Com 1H
Date Release Discovered	02/24/2024
Surface Owner	Federal

Incident Details	
Please answer all the questions in this group.	
Incident Type	Produced Water Release
Did this release result in a fire or is the result of a fire	No
Did this release result in any injuries	No
Has this release reached or does it have a reasonable probability of reaching a watercourse	No
Has this release endangered or does it have a reasonable probability of endangering public health	No
Has this release substantially damaged or will it substantially damage property or the environment	No
Is this release of a volume that is or may with reasonable probability be detrimental to fresh water	No

Nature and Volume of Release	
Material(s) released, please answer all that apply below. Any calculations or specific justifications for the volumes provided should be attached to the follow-up C-141 submission.	
Crude Oil Released (bbls) Details	Not answered.
Produced Water Released (bbls) Details	Cause: Equipment Failure Pump Produced Water Released: 7 BBL Recovered: 7 BBL Lost: 0 BBL.
Is the concentration of chloride in the produced water >10,000 mg/l	Yes
Condensate Released (bbls) Details	Not answered.
Natural Gas Vented (Mcf) Details	Not answered.
Natural Gas Flared (Mcf) Details	Not answered.
Other Released Details	Not answered.
Are there additional details for the questions above (i.e. any answer containing Other, Specify, Unknown, and/or Fire, or any negative lost amounts)	The seal on a water transfer pump failed, releasing 7 barrels produced water into the lined containment. A vacuum truck was able to recover all fluids. The containment will be washed and a liner inspection will be scheduled in the coming weeks. Released: 7 barrels water (inside containment) Recovered: 7 barrels from containment

District I

1625 N. French Dr., Hobbs, NM 88240
Phone:(575) 393-6161 Fax:(575) 393-0720

District II

811 S. First St., Artesia, NM 88210
Phone:(575) 748-1283 Fax:(575) 748-9720

District III

1000 Rio Brazos Rd., Aztec, NM 87410
Phone:(505) 334-6178 Fax:(505) 334-6170

District IV

1220 S. St Francis Dr., Santa Fe, NM 87505
Phone:(505) 476-3470 Fax:(505) 476-3462

State of New Mexico
Energy, Minerals and Natural Resources
Oil Conservation Division
1220 S. St Francis Dr.
Santa Fe, NM 87505

QUESTIONS, Page 2

Action 329055

QUESTIONS (continued)

Operator: CIMAREX ENERGY CO. OF COLORADO 6001 Deauville Blvd Midland, TX 79706	OGRID:	162683
	Action Number:	329055
	Action Type:	[C-141] Remediation Closure Request C-141 (C-141-v-Closure)

QUESTIONS

Nature and Volume of Release (continued)	
Is this a gas only submission (i.e. only significant Mcf values reported)	No, according to supplied volumes this does not appear to be a "gas only" report.
Was this a major release as defined by Subsection A of 19.15.29.7 NMAC	No
Reasons why this would be considered a submission for a notification of a major release	<i>Unavailable.</i>
<i>With the implementation of the 19.15.27 NMAC (05/25/2021), venting and/or flaring of natural gas (i.e. gas only) are to be submitted on the C-129 form.</i>	

Initial Response

The responsible party must undertake the following actions immediately unless they could create a safety hazard that would result in injury.

The source of the release has been stopped	True
The impacted area has been secured to protect human health and the environment	True
Released materials have been contained via the use of berms or dikes, absorbent pads, or other containment devices	True
All free liquids and recoverable materials have been removed and managed appropriately	True
If all the actions described above have not been undertaken, explain why	<i>Not answered.</i>

Per Paragraph (4) of Subsection B of 19.15.29.8 NMAC the responsible party may commence remediation immediately after discovery of a release. If remediation has begun, please prepare and attach a narrative of actions to date in the follow-up C-141 submission. If remedial efforts have been successfully completed or if the release occurred within a lined containment area (see Subparagraph (a) of Paragraph (5) of Subsection A of 19.15.29.11 NMAC), please prepare and attach all information needed for closure evaluation in the follow-up C-141 submission.

I hereby certify that the information given above is true and complete to the best of my knowledge and understand that pursuant to OCD rules and regulations all operators are required to report and/or file certain release notifications and perform corrective actions for releases which may endanger public health or the environment. The acceptance of a C-141 report by the OCD does not relieve the operator of liability should their operations have failed to adequately investigate and remediate contamination that pose a threat to groundwater, surface water, human health or the environment. In addition, OCD acceptance of a C-141 report does not relieve the operator of responsibility for compliance with any other federal, state, or local laws and/or regulations.

I hereby agree and sign off to the above statement	Name: Laci Luig Title: ES&H Specialist Email: DL_PermianEnvironmental@coterra.com Date: 04/02/2024
--	---

District I

1625 N. French Dr., Hobbs, NM 88240
Phone:(575) 393-6161 Fax:(575) 393-0720

District II

811 S. First St., Artesia, NM 88210
Phone:(575) 748-1283 Fax:(575) 748-9720

District III

1000 Rio Brazos Rd., Aztec, NM 87410
Phone:(505) 334-6178 Fax:(505) 334-6170

District IV

1220 S. St Francis Dr., Santa Fe, NM 87505
Phone:(505) 476-3470 Fax:(505) 476-3462

State of New Mexico
Energy, Minerals and Natural Resources
Oil Conservation Division
1220 S. St Francis Dr.
Santa Fe, NM 87505

QUESTIONS, Page 3

Action 329055

QUESTIONS (continued)

Operator: CIMAREX ENERGY CO. OF COLORADO 6001 Deauville Blvd Midland, TX 79706	OGRID:	162683
	Action Number:	329055
	Action Type:	[C-141] Remediation Closure Request C-141 (C-141-v-Closure)

QUESTIONS**Site Characterization**

Please answer all the questions in this group (only required when seeking remediation plan approval and beyond). This information must be provided to the appropriate district office no later than 90 days after the release discovery date.

What is the shallowest depth to groundwater beneath the area affected by the release in feet below ground surface (ft bgs)	Between 100 and 500 (ft.)
What method was used to determine the depth to ground water	OCD Imaging Records Lookup
Did this release impact groundwater or surface water	No
What is the minimum distance, between the closest lateral extents of the release and the following surface areas:	
A continuously flowing watercourse or any other significant watercourse	Between 1 and 5 (mi.)
Any lakebed, sinkhole, or playa lake (measured from the ordinary high-water mark)	Between 1000 (ft.) and ½ (mi.)
An occupied permanent residence, school, hospital, institution, or church	Greater than 5 (mi.)
A spring or a private domestic fresh water well used by less than five households for domestic or stock watering purposes	Greater than 5 (mi.)
Any other fresh water well or spring	Between 1 and 5 (mi.)
Incorporated municipal boundaries or a defined municipal fresh water well field	Greater than 5 (mi.)
A wetland	Between 1000 (ft.) and ½ (mi.)
A subsurface mine	Greater than 5 (mi.)
An (non-karst) unstable area	Zero feet, overlying, or within area
Categorize the risk of this well / site being in a karst geology	High
A 100-year floodplain	Between 1 and 5 (mi.)
Did the release impact areas not on an exploration, development, production, or storage site	No

Remediation Plan

Please answer all the questions that apply or are indicated. This information must be provided to the appropriate district office no later than 90 days after the release discovery date.

Requesting a remediation plan approval with this submission	Yes
Attach a comprehensive report demonstrating the lateral and vertical extents of soil contamination associated with the release have been determined, pursuant to 19.15.29.11 NMAC and 19.15.29.13 NMAC.	
Have the lateral and vertical extents of contamination been fully delineated	Yes
Was this release entirely contained within a lined containment area	Yes
Per Subsection B of 19.15.29.11 NMAC unless the site characterization report includes completed efforts at remediation, the report must include a proposed remediation plan in accordance with 19.15.29.12 NMAC, which includes the anticipated timelines for beginning and completing the remediation.	
On what estimated date will the remediation commence	02/26/2024
On what date will (or did) the final sampling or liner inspection occur	03/22/2024
On what date will (or was) the remediation complete(d)	03/22/2024
What is the estimated surface area (in square feet) that will be remediated	2400
What is the estimated volume (in cubic yards) that will be remediated	0
These estimated dates and measurements are recognized to be the best guess or calculation at the time of submission and may (be) change(d) over time as more remediation efforts are completed.	
The OCD recognizes that proposed remediation measures may have to be minimally adjusted in accordance with the physical realities encountered during remediation. If the responsible party has any need to significantly deviate from the remediation plan proposed, then it should consult with the division to determine if another remediation plan submission is required.	

District I

1625 N. French Dr., Hobbs, NM 88240
Phone:(575) 393-6161 Fax:(575) 393-0720

District II

811 S. First St., Artesia, NM 88210
Phone:(575) 748-1283 Fax:(575) 748-9720

District III

1000 Rio Brazos Rd., Aztec, NM 87410
Phone:(505) 334-6178 Fax:(505) 334-6170

District IV

1220 S. St Francis Dr., Santa Fe, NM 87505
Phone:(505) 476-3470 Fax:(505) 476-3462

State of New Mexico
Energy, Minerals and Natural Resources
Oil Conservation Division
1220 S. St Francis Dr.
Santa Fe, NM 87505

QUESTIONS, Page 4

Action 329055

QUESTIONS (continued)

Operator: CIMAREX ENERGY CO. OF COLORADO 6001 Deauville Blvd Midland, TX 79706	OGRID: 162683
	Action Number: 329055
	Action Type: [C-141] Remediation Closure Request C-141 (C-141-v-Closure)

QUESTIONS**Remediation Plan (continued)**

Please answer all the questions that apply or are indicated. This information must be provided to the appropriate district office no later than 90 days after the release discovery date.

This remediation will (or is expected to) utilize the following processes to remediate / reduce contaminants:

(Select all answers below that apply.)

Is (or was) there affected material present needing to be removed	Yes
Is (or was) there a power wash of the lined containment area (to be) performed	Yes
OTHER (Non-listed remedial process)	Yes
Other Non-listed Remedial Process. Please specify	Containment area was power washed, cleaned, and a vac truck removed all free standing liquid in the containment. An inspection was conducted of the containment area and no holes or leaks were found inside the containment area.

Per Subsection B of 19.15.29.11 NMAC unless the site characterization report includes completed efforts at remediation, the report must include a proposed remediation plan in accordance with 19.15.29.12 NMAC, which includes the anticipated timelines for beginning and completing the remediation.

I hereby certify that the information given above is true and complete to the best of my knowledge and understand that pursuant to OCD rules and regulations all operators are required to report and/or file certain release notifications and perform corrective actions for releases which may endanger public health or the environment. The acceptance of a C-141 report by the OCD does not relieve the operator of liability should their operations have failed to adequately investigate and remediate contamination that pose a threat to groundwater, surface water, human health or the environment. In addition, OCD acceptance of a C-141 report does not relieve the operator of responsibility for compliance with any other federal, state, or local laws and/or regulations.

I hereby agree and sign off to the above statement	Name: Laci Luig Title: ES&H Specialist Email: DL_PermianEnvironmental@coterra.com Date: 04/02/2024
--	---

The OCD recognizes that proposed remediation measures may have to be minimally adjusted in accordance with the physical realities encountered during remediation. If the responsible party has any need to significantly deviate from the remediation plan proposed, then it should consult with the division to determine if another remediation plan submission is required.

District I

1625 N. French Dr., Hobbs, NM 88240
Phone:(575) 393-6161 Fax:(575) 393-0720

District II

811 S. First St., Artesia, NM 88210
Phone:(575) 748-1283 Fax:(575) 748-9720

District III

1000 Rio Brazos Rd., Aztec, NM 87410
Phone:(505) 334-6178 Fax:(505) 334-6170

District IV

1220 S. St Francis Dr., Santa Fe, NM 87505
Phone:(505) 476-3470 Fax:(505) 476-3462

State of New Mexico
Energy, Minerals and Natural Resources
Oil Conservation Division
1220 S. St Francis Dr.
Santa Fe, NM 87505

QUESTIONS, Page 6

Action 329055

QUESTIONS (continued)

Operator: CIMAREX ENERGY CO. OF COLORADO 6001 Deauville Blvd Midland, TX 79706	OGRID:	162683
	Action Number:	329055
	Action Type:	[C-141] Remediation Closure Request C-141 (C-141-v-Closure)

QUESTIONS

Liner Inspection Information	
Last liner inspection notification (C-141L) recorded	326019
Liner inspection date pursuant to Subparagraph (a) of Paragraph (5) of Subsection A of 19.15.29.11 NMAC	03/27/2024
Was all the impacted materials removed from the liner	Yes
What was the liner inspection surface area in square feet	2430

Remediation Closure Request

Only answer the questions in this group if seeking remediation closure for this release because all remediation steps have been completed.

Requesting a remediation closure approval with this submission	Yes
Have the lateral and vertical extents of contamination been fully delineated	Yes
Was this release entirely contained within a lined containment area	Yes
What was the total surface area (in square feet) remediated	2400
What was the total volume (cubic yards) remediated	0
Summarize any additional remediation activities not included by answers (above)	Containment area was power washed, cleaned, and a vac truck removed all free standing liquid in the containment. An inspection was conducted of the containment area and no holes or leaks were found inside the containment area.

The responsible party must attach information demonstrating they have complied with all applicable closure requirements and any conditions or directives of the OCD. This demonstration should be in the form of a comprehensive report (in .pdf format) including a scaled site map, sampling diagrams, relevant field notes, photographs of any excavation prior to backfilling, laboratory data including chain of custody documents of final sampling, and a narrative of the remedial activities. Refer to 19.15.29.12 NMAC.

I hereby certify that the information given above is true and complete to the best of my knowledge and understand that pursuant to OCD rules and regulations all operators are required to report and/or file certain release notifications and perform corrective actions for releases which may endanger public health or the environment. The acceptance of a C-141 report by the OCD does not relieve the operator of liability should their operations have failed to adequately investigate and remediate contamination that pose a threat to groundwater, surface water, human health or the environment. In addition, OCD acceptance of a C-141 report does not relieve the operator of responsibility for compliance with any other federal, state, or local laws and/or regulations. The responsible party acknowledges they must substantially restore, reclaim, and re-vegetate the impacted surface area to the conditions that existed prior to the release or their final land use in accordance with 19.15.29.13 NMAC including notification to the OCD when reclamation and re-vegetation are complete.

I hereby agree and sign off to the above statement	Name: Laci Luig Title: ES&H Specialist Email: DL_PermianEnvironmental@coterra.com Date: 04/02/2024
--	---

District I
1625 N. French Dr., Hobbs, NM 88240
Phone:(575) 393-6161 Fax:(575) 393-0720
District II
811 S. First St., Artesia, NM 88210
Phone:(575) 748-1283 Fax:(575) 748-9720
District III
1000 Rio Brazos Rd., Aztec, NM 87410
Phone:(505) 334-6178 Fax:(505) 334-6170
District IV
1220 S. St Francis Dr., Santa Fe, NM 87505
Phone:(505) 476-3470 Fax:(505) 476-3462

State of New Mexico
Energy, Minerals and Natural Resources
Oil Conservation Division
1220 S. St Francis Dr.
Santa Fe, NM 87505

CONDITIONS

Action 329055

CONDITIONS

Operator: CIMAREX ENERGY CO. OF COLORADO 6001 Deauville Blvd Midland, TX 79706	OGRID: 162683
	Action Number: 329055
	Action Type: [C-141] Remediation Closure Request C-141 (C-141-v-Closure)

CONDITIONS

Created By	Condition	Condition Date
scwells	None	4/19/2024