



February 28, 2024

New Mexico Energy Minerals and Natural Resources Department

New Mexico Oil Conservation Division
1220 South St. Francis Drive
Santa Fe, New Mexico 87505

**Re: Deferral Request
Uncle Don State TB
Incident Number nAPP2401670338
Lea County, New Mexico**

To Whom It May Concern:

Ensolum, LLC (Ensolum), on behalf of Matador Production Company (Matador), has prepared this *Deferral Request* to document assessment and soil sampling activities at the Uncle Don State TB (Site) in Unit L, Section 35, Township 22 South, Range 35 East, in Lea County, New Mexico (Figure 1). The Site (32.34135° N, 103.3448° W) is associated with oil and gas exploration and production operations on State Trust Land managed by the New Mexico State Land Office (NMSLO).

The purpose of the Site assessment and soil sampling activities was to assess for the presence or absence of impacts to soil following a release of crude oil within a lined containment at the Site. Based on field observations, field screening activities, and soil sample laboratory analytical results, Matador is submitting this *Deferral Request*, describing Site assessment and delineation activities that have occurred and requesting deferral of final remediation for Incident Number nAPP2401670338 until the Site is reconstructed and/or the well pad is abandoned.

BACKGROUND

On January 16, 2024, a valve failed on a crude oil storage tank due to freezing temperatures, resulting in the release of approximately 128 barrels (bbls) of crude oil into the lined tank battery containment. A vacuum truck was immediately dispatched to the Site to recover free-standing fluids; all 128 bbls of released crude oil were recovered from within the lined containment. A small area to the north of containment was lightly misted due to fluid splashing off the containment floor. A 48-hour advance notice of liner inspection was provided via email to the New Mexico Oil Conservation Division (NMOCD) District II Office. A liner integrity inspection was conducted by Ensolum personnel following fluid recovery. Upon inspection, the liner was determined to be insufficient. Matador reported the release to the NMOCD via the NMOCD Incident Portal on January 16, 2024, and submitted a Release Notification Form C-141 (Form C-141) on January 22, 2023. The release was assigned Incident Number nAPP2401670338. The Form C-141 for this incident can be referenced using the NMOCD Portal.

SITE CHARACTERIZATION AND CLOSURE CRITERIA

The Site was characterized to assess applicability of Table I, Closure Criteria for Soils Impacted by a Release, of Title 19, Chapter 15, Part 29, Section 12 (19.15.29.12) of the New Mexico Administrative

Code (NMAC). Results from the characterization desktop review are presented on page 3 of the Form C-141, Site Assessment/Characterization. Potential Site receptors are identified on Figure 1.

According to the New Mexico Office of the State Engineer (NMOSE), the closest permitted groundwater well with depth to groundwater data is J 00040 POD1, located approximately 2.99 miles northeast of the Site. The well had a reported depth to groundwater of 270 feet below ground surface (bgs) and a total depth of 800 feet bgs. There are no regional or Site-specific hydrogeological conditions, such as shallow surface water, karst features, wetlands, or vegetation to suggest the Site is conducive to shallow groundwater. All wells used for depth to groundwater determination are presented on Figure 1. The referenced well record is included in Appendix A.

The closest continuously flowing or significant watercourse to the Site is an emergent wetland, located approximately 0.82 miles northeast of the Site. The Site is greater than 200 feet from a lakebed, sinkhole, or playa lake and greater than 300 feet from an occupied residence, school, hospital, institution, church, or wetland. The Site is greater than 1,000 feet to a freshwater well or spring and is not within a 100-year floodplain or overlying a subsurface mine. The Site is not underlain by unstable geology (low potential karst designation area). Site receptors are identified on Figure 1.

Based on the results of the Site Characterization, the following NMOCD Table I Closure Criteria (Closure Criteria) apply:

- Benzene: 10 milligrams per kilogram (mg/kg)
- Benzene, toluene, ethylbenzene, and total xylenes (BTEX): 50 mg/kg
- Total Petroleum Hydrocarbons (TPH): 100 mg/kg
- Chloride: 600 mg/kg

SITE ASSESSMENT ACTIVITIES

On January 25, 2024, Ensolum personnel visited the Site to evaluate the release extent, conducted Site assessment activities, and to conduct a liner inspection. During the inspection the liner was found to be insufficient and as such it was determined further delineation was necessary. Four assessment soil samples (SS01 through SS04) were collected around the documented release extent at surface level. The soil samples were field screened for TPH utilizing a PetroFLAG® Hydrocarbon Test Kit and chloride using Hach® chloride QuanTab® test strips. The soil sample locations were mapped utilizing a handheld Global Positioning System (GPS) unit and are depicted in Figure 2. Photographic documentation was completed during the Site visit and a photographic log is included as Appendix B.

The release remained on the well pad that is currently in operation for oil and gas production purposes. As such, the release area is not expected to be reclaimed until the oil and gas well is plugged and abandoned (P&A'd) and the well pad is reclaimed. The Reclamation Plan for this release will default to the NMSLO-approved Reclamation Plan for the well pad per 19.2.100.67 NMAC.

The soil samples were placed directly into pre-cleaned glass jars, labeled with the location, date, time, sampler name, method of analysis, and immediately placed on ice. The soil samples were transported under strict chain-of-custody procedures to Envirotech Analytical Laboratory (Envirotech) in Farmington, New Mexico, for analysis of the following chemicals of concern (COCs): BTEX following United States Environmental Protection Agency (EPA) Method 8021B; TPH-gasoline range organics (GRO), TPH-diesel range organics (DRO), and TPH-oil range organics (ORO) following EPA Method 8015M/D; and chloride following Standard Method SM4500.

DELINEATION ACTIVITIES

Ensolum returned to the Site on January 31, 2024, and February 01, 2024, to conduct delineation activities to assess for the presence or absence of impacts to soil beneath the containment. The liner was found insufficient during the January 2024 inspection and as such, three boreholes, BH01, BH02, and BH03, were advanced in the general vicinity of the damaged liner. Boreholes were advanced via hand auger to depths ranging from ground surface to 5 feet bgs and field screened for TPH and chlorides at each foot. Boreholes BH02 and BH03 encountered refusal at depths of 3 feet and 1-foot bgs, respectively, due to a layer of bedrock. One borehole, BH04, was advanced outside of the lined containment area to determine the presence or absence of impacts in the splashed footprint. The Borehole, BH04, was advanced using a hand auger to a depth of 2 feet bgs and field screened for TPH and chlorides at each foot. The soil samples were handled and analyzed as previously described. Field screening results and observations from the boreholes were logged on lithologic/soil sampling logs, which are included in Appendix B.

EXCAVATION ACTIVITIES

On February 8, 2024, Ensolum personnel oversaw the excavation of impacted soil from the overspray area outside the containment. Excavation activities were performed via backhoe to depths ranging from surface level to 0.5 feet bgs. To direct excavation activities, soil was field screened for TPH and chloride as previously described. Photographic documentation is included in Appendix C. Since this release remained on pad and is currently in operation for oil and gas production purposes. The release area is found directly under the lined containment is not expected to be reclaimed until the oil and gas well is P&A'd and the well pad is reclaimed. The Reclamation Plan for this release will default to the NMSLO-approved Reclamation Plan for the well pad per 19.2.100.67 NMAC

Following removal of impacted soil, 5-point composite soil samples were collected every 200 square feet from the floor of the excavation. The 5-point composite soil samples were collected by placing five equivalent aliquots of soil into a 1-gallon, resealable plastic bag and homogenizing the samples by thoroughly mixing. Composite soil samples FS01 through FS04 were collected from the floor of the excavation at depths ranging from surface level to 0.5 feet bgs. Sidewalls were included in composite soil samples FS01 through FS04 due to the shallow nature of the excavation in these areas. The soil samples were handled and analyzed as previously described. The excavation extent and excavation soil sample locations were mapped utilizing a handheld GPS unit and are depicted on Figure 3.

A total of approximately 13 cubic yards of soil were removed during excavation activities. The impacted soil was transported and properly disposed of at the R360 Disposal Facility in Hobbs, New Mexico.

LABORATORY ANALYTICAL RESULTS

Laboratory analytical results for assessment soil samples SS01 through SS04, collected around the release extent, indicated all COC concentrations were compliant with Site Closure Criteria and reclamation requirements. Laboratory analytical results are summarized in Table 1 and the complete laboratory analytical reports are included as Appendix D.

Laboratory analytical results for the vertical delineation soil samples collected from borehole BH01, indicated BTEX concentrations exceeded the Site Closure Criteria at ground surface, and exceed Site closure criteria for TPH and chloride at depths ranging from surface level to 2 feet bgs, directly beneath the tear in the liner, and met the Site Closure Criteria at 4 feet bgs. Delineation borehole BH02 indicated BTEX and TPH COC concentrations exceeded the Site Closure Criteria at ground surface level and were compliant with the Site Closure Criteria at 2 feet bgs. Delineation borehole BH03 indicated

Matador Production Company
Uncle Don State TB



Benzene, Total BTEX, and TPH concentrations exceeded the Site Closure Criteria at depths ranging from ground surface to 1-foot bgs. Delineation borehole BH04 indicated all COC concentrations were compliant with Site Closure Criteria.

Laboratory analytical results for the excavation floor soil samples FS01 through FS04, collected at depths ranging from ground surface level to 0.5 feet bgs and outside the lined containment, indicated all COC concentrations were compliant with the Closure Criteria. Laboratory analytical results are summarized in Table 1 and the complete laboratory analytical reports are included as Appendix D.

DEFERRAL REQUEST

Matador is requesting deferral of final remediation due to the presence of active production equipment and surface pipelines within the lined containment. Impacted soil is limited to the area immediately beneath the lined containment and active production equipment, where remediation would require a major facility deconstruction.

Impacted soil remaining in place beneath the liner, which is delineated vertically by delineation soil samples BH01 and BH02, collected at depths of 4 feet and 2 feet bgs, respectively, and laterally by surface soil samples SS01 through SS04, collected at the ground surface level. A maximum of 145 cubic yards of BTEX, TPH, and chloride impacted soil remains in place beneath the liner assuming an average depth of 3 feet bgs based on the delineation soil samples listed above. Impacted soil volumes estimate include waste-containing soil volumes to be addressed through reconstruction of the containment or final pad reclamation.

Matador does not believe deferment will result in imminent risk to human health, the environment, or groundwater. Depth to groundwater was determined to be greater than 200 feet bgs, the release was contained laterally by the lined containment, and the impacted soil remaining in place is limited to the area immediately beneath the liner. The liner has been repaired by Matador and will restrict future vertical migration of residual impacts and any interactions with humans and/or wildlife.

Based on the presence of active production equipment within the release area and the complete lateral and vertical delineation of impacted soil remaining in place, Matador requests deferral of final remediation for Incident Number nAPP2401670338 until final reclamation of the well pad or major construction, whichever comes first. Remedial actions completed to date have been protective of human health, the environment, and groundwater and deferment of impacted soil beneath the lined containment appears to be equally protective and warranting deferment. Notifications submitted to the NMOCD are included in Appendix F and the final Form C-141 can be referenced in the NMOCD Incident Portal.

If you have any questions or comments, please contact Ms. Ashley Giovengo at (575) 988-0055 or agiovengo@ensolum.com.

Sincerely,
Ensolum, LLC

A handwritten signature in black ink, appearing to read "CHAD HAMILTON", with a stylized flourish at the end.

Chad Hamilton
Staff Geologist

A handwritten signature in black ink, appearing to read "DANIEL R. MOIR", with a stylized flourish at the end.

Daniel R. Moir, PG
Senior Managing Geologist

Matador Production Company
Uncle Don State TB



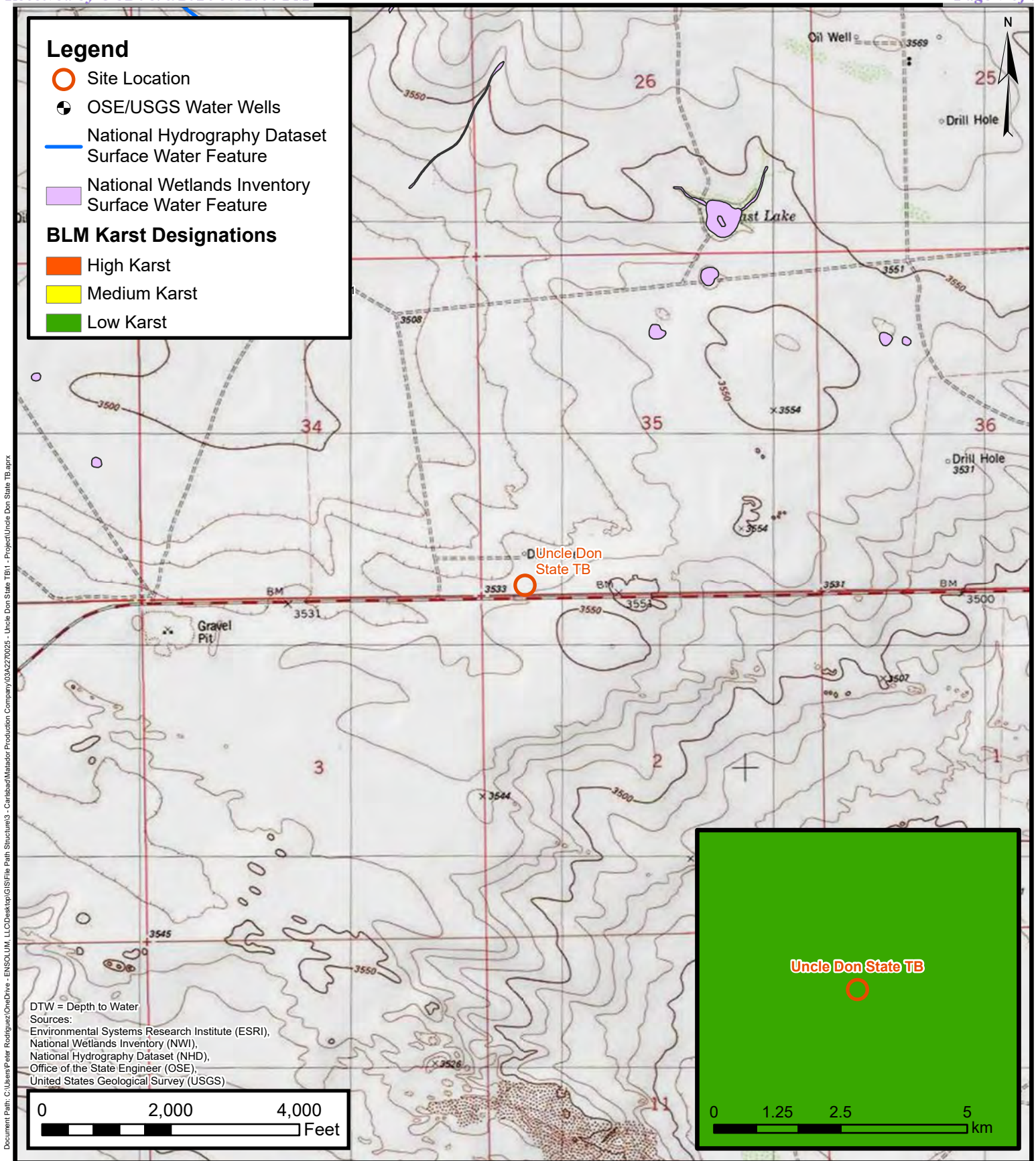
cc: Clinton Talley, Matador
NMSLO

Appendices:

Figure 1	Site Receptor Map
Figure 2	Delineation Soil Sample Locations
Figure 3	Excavation Soil Sample Locations
Figure 4	Area of Requested Deferral
Table 1	Soil Sample Analytical Results
Appendix A	Reference Wells
Appendix B	Lithologic Soil Sampling Logs
Appendix C	Photographic Log
Appendix D	Laboratory Analytical Reports & Chain-of-Custody Documentation
Appendix E	Email Correspondence



FIGURES



Site Receptor Map

Matador Production Company
 Uncle Don State TB
 Incident Number: nAPP2401670338
 Unit L, Section 35, T 22S, R 35E
 Lea County, New Mexico

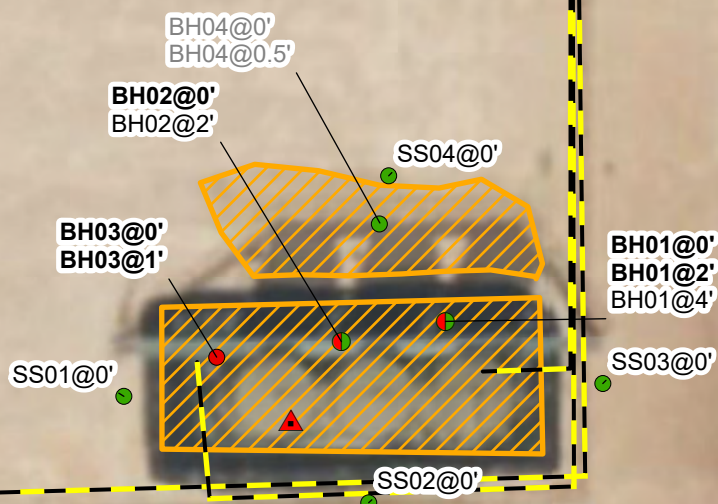
FIGURE

1

ENSOLUM
 Environmental, Engineering and
 Hydrogeologic Consultants

Legend

- ▲ Release Point
- Delineation Soil Sample in Compliance with Closure Criteria
- Delineation Soil Sample Initially Exceeding Closure Criteria
- Delineation Soil Sample Not in Compliance with Closure Criteria
- Surface Flowline
- Release Extent



Notes:
 Sample ID @ Depth Below Ground Surface.
 Samples in bold indicate sample exceeded applicable closure criteria.
 Grey text indicate soil sample was removed during excavation activities.

0 12.5 25 50
 Feet

Sources: Environmental Systems Research Institute (ESRI)



Delineation Soil Sample Locations

Matador Production Company
 Uncle Don State TB
 Incident Number: nAPP2401670338
 Unit L, Section 35, T 22S, R 35E
 Lea County, New Mexico

FIGURE
2

Legend

- ▲ Release Point
- Confirmation Soil Sample in Compliance with Closure Criteria
- Surface Flowlines
- Excavation Extent

FS04@0.5' FS03@0.5' FS02@0.5' FS01@0.5'

BH04@0'
BH04@0.5'

Notes:
 Sample ID @ Depth Below Ground Surface.
 Grey text indicate soil sample was removed during excavation activities.

0 15 30 60
 Feet

Sources: Environmental Systems Research Institute (ESRI)



Confirmation Soil Sample Locations

Matador Production Company
 Uncle Don State TB
 Incident Number: nAPP2401670338
 Unit L, Section 35, T 22S, R 35E
 Lea County, New Mexico

FIGURE

3

Legend

- ▲ Point of Release
- Delineation Soil Sample Complaint with Site Closure Criteria
- Delineation Soil Sample Not Complaint with Site Closure Criteria
- Delineation Soil Sample Not Complaint with Site Closure Criteria
- Oil and Gas Utility Lines
- Water Utility Lines
- Flare Line
- Area of Requested Deferral

SS04@0'

BH02@0'
BH02@2'

BH03@0'
BH03@1'

SS01@0'

SS02@0'

SS03@0'

BH01@0'
BH01@2'
BH01@4'

County Road 21

Notes:
Sample ID @ Depth Below Ground Surface
Concentrations in **bold** exceed the NMOCD Table I Closure

0 75 150
Feet

Sources:
Bing Maps



Area of Requested Deferral

Matador Production Company
Uncle Don State TB
Incident Number: nAPP2401670338
Unit L, Section 35, T 22S, R 35E
Lea County, New Mexico

FIGURE

4



TABLES



TABLE 1
SOIL SAMPLE ANALYTICAL RESULTS - Continued
 Uncle Don State TB
 Matador Production Company
 Lea County, New Mexico

Sample Designation	Date	Depth (feet bgs)	Benzene (mg/kg)	Total BTEX (mg/kg)	TPH GRO (mg/kg)	TPH DRO (mg/kg)	TPH ORO (mg/kg)	GRO+DRO (mg/kg)	Total TPH (mg/kg)	Chloride (mg/kg)
NMOCD Table I Closure Criteria (NMAC 19.15.29)			10	50	NE	NE	NE	NE	100	600
Delineation Soil Samples										
SS01	1/25/2024	0	<0.0250	<0.0250	<20.0	<25.0	<50.0	<25.0	<25.0	120
SS02	1/25/2024	0	<0.0250	<0.0250	<20.0	<25.0	<50.0	<25.0	<25.0	34.2
SS03	1/25/2024	0	<0.0250	<0.0250	<20.0	<25.0	<50.0	<25.0	<25.0	29.7
SS04	1/25/2024	0	<0.0250	<0.0250	<20.0	<25.0	<50.0	<25.0	<25.0	<20.0
BH01	1/31/2024	0	6.06	150	1,560	15,700	4,170	17,260	17,410	<20.0
BH01	1/31/2024	2	<0.0250	0.0285	<20.0	55.2	<50.0	55.2	55.23	643
BH01	1/31/2024	4	<0.0250	<0.0250	<0.0250	<25.0	<50.0	<25.0	<25.0	78.8
BH02	2/1/2024	0	16.7	673.7	2,510	18,700	4,680	21,210	25,890	165
BH02	2/1/2024	2	<0.0250	<0.0250	<20.0	<25.0	<50.0	<25.0	<25.0	32
BH03	2/1/2024	0	19	822	3,050	20,400	5,940	23,450	29,390	99.5
BH03	2/1/2024	1	<0.0250	37	215	1,280	318	1,495	1,813	56
BH04	01/31/2024	0	<0.0250	<0.0250	<20.0	<25.0	<50.0	<25.0	<25.0	448
BH04	1/31/2024	0.5	<0.0250	<0.0250	<20.0	<25.0	<50.0	<25.0	<25.0	140
Confirmation Soil Samples										
FS01	2/8/2024	0.5'	<0.025	<0.025	<20.0	<25.0	<50.0	<25.0	<20.0	84.9
FS02	2/8/2024	0.5'	<0.025	<0.025	<20.0	<25.0	<50.0	<25.0	<20.0	306
FS03	2/8/2024	0.5'	<0.025	<0.025	<20.0	<25.0	<50.0	<25.0	<20.0	118
FS04	2/8/2024	0.5'	<0.025	<0.025	<20.0	<25.0	<50.0	<25.0	<20.0	35.5

Notes:

bgs: below ground surface

mg/kg: milligrams per kilogram

NMOCD: New Mexico Oil Conservation Division

NMAC: New Mexico Administrative Code

Grey text represents samples that have been excavated

<": Laboratory Analytical result is less than reporting limit

Concentrations in **bold** exceed the NMOCD Table I Closure Criteria or reclamation standard where applicable.

* Indicates sample was collected in area to be reclaimed after remediation is complete; reclamation for chloride in the top 4 feet is 600 mg/kg and total TPH is 100 mg/kg.

GRO: Gasoline Range Organics

DRO: Diesel Range Organics

ORO: Oil Range Organics

TPH: Total Petroleum Hydrocarbon

BTEX: Benzene, Toluene, Ethylbenzene, and Xylenes



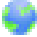
APPENDIX A

Referenced Wells



New Mexico Office of the State Engineer

Point of Diversion Summary


		(quarters are 1=NW 2=NE 3=SW 4=SE)						(quarters are smallest to largest)		(NAD83 UTM in meters)			
Well Tag	POD Number	Q64	Q16	Q4	Sec	Tws	Rng	X	Y				
NA	J 00040 POD1	4	1	3	18	26N	36E	658962	3583082				
Driller License: 1723		Driller Company: SBQ2, LLC DBA STEWART BROTHERS DRILLING CO.											
Driller Name: STEWART, RANDAL P.EE.NER													
Drill Start Date: 07/14/2019		Drill Finish Date: 07/14/2019				Plug Date: 07/14/2019							
Log File Date: 01/02/2020		PCW Rcv Date:				Source:							
Pump Type:		Pipe Discharge Size:				Estimated Yield:							
Casing Size:		Depth Well:				Depth Water: 270 feet							


The data is furnished by the NMOSE/ISC and is accepted by the recipient with the expressed understanding that the OSE/ISC make no warranties, expressed or implied, concerning the accuracy, completeness, reliability, usability, or suitability for any particular purpose of the data.





APPENDIX B

Lithologic Soil Sampling Logs

								Sample Name: BH01		Date: 01/31/2024	
								Site Name: Uncle Don State TB			
								Incident Number: nAPP2401670338			
								03A2270025			
LITHOLOGIC / SOIL SAMPLING LOG								Logged By: Chad Hamilton		Method: Hand Auger	
Coordinates: 32.34140, -103.34466								Hole Diameter: 3"		Total Depth: 5'	
Comments: Field screening conducted with HACH Chloride Test Strips and PetroFlag for chloride and TPH, respectively. Chloride test performed with 1:4 dilution factor of soil to distilled water. No correction factors included.											
Moisture Content	Chloride (ppm)	TPH (ppm)	Staining	Sample ID	Sample Depth (ft bgs)	Depth (ft bgs)	USCS/Rock Symbol	Lithologic Descriptions			
M	NA	NA	Y	BH01	0	0	CCHE	Caliche Pad			
D	470	NA		BH01	0.5	0.5	CCHE	Caliche, light to medium tan, mostly medium grain size with some large gravel, dry, nonplastic, noncohesive, massive, nonuniform			
D	ND	NA		BH01	1	1	CCHE				
D	650	NA		BH01	2	2	CCHE				
D	1,870	NA		BH01	3	3	CCHE				
D	ND	23		BH01	4	4	SW-SM	Sand, light to medium brown, fine to medium grain size with some gravel, nonplastic, noncohesive, massive, nonuniform, alluvial, sharp			
D	ND	NA		BH01	5	5	SW-SM				
Total Depth @ 5 ft bgs.											

								Sample Name: BH02		Date: 02/01/2024	
								Site Name: Uncle Don State TB			
								Incident Number: nAPP2401670338			
								03A2270025			
LITHOLOGIC / SOIL SAMPLING LOG								Logged By: Chad Hamilton		Method: Hand Auger	
Coordinates: 32.34139, -103.34471								Hole Diameter: 3"		Total Depth: 3'	
Comments: Field screening conducted with HACH Chloride Test Strips and PetroFlag for chloride and TPH, respectively. Chloride test performed with 1:4 dilution factor of soil to distilled water. No correction factors included.											
Moisture Content	Chloride (ppm)	TPH (ppm)	Staining	Sample ID	Sample Depth (ft bgs)	Depth (ft bgs)	USCS/Rock Symbol	Lithologic Descriptions			
M	NA	NA	Y	BH02	0	0	CCHE	Caliche Pad			
D	526	NA	N	BH02	0.5	0.5	CCHE	Caliche, light to medium tan, mostly medium grain size with some large gravel, dry, nonplastic, noncohesive, massive, nonuniform			
D	ND	NA	N	BH02	1	1	CCHE				
D	ND	13	N	BH02	2	2	CCHE				
D	ND	NA	N	BH02	3	3	CCHE				
Total Depth @ 3 ft bgs.											

								Sample Name: BH03		Date: 02/01/2024	
								Site Name: Uncle Don State TB			
								Incident Number: nAPP2401670338			
								03A2270025			
LITHOLOGIC / SOIL SAMPLING LOG								Logged By: Chad Hamilton		Method: Hand Auger	
Coordinates: 32.34138, -103.34478								Hole Diameter: 3"		Total Depth: 1'	
Comments: Field screening conducted with HACH Chloride Test Strips and PetroFlag for chloride and TPH, respectively. Chloride test performed with 1:4 dilution factor of soil to distilled water. No correction factors included.											
Moisture Content	Chloride (ppm)	TPH (ppm)	Staining	Sample ID	Sample Depth (ft bgs)	Depth (ft bgs)	USCS/Rock Symbol	Lithologic Descriptions			
M	NA	NA	Y	BH04	0	0	CCHE	Caliche Pad			
D	ND	470	N	BH04	0.5	0.5	CCHE	Caliche, light to medium tan, mostly medium grain size with some large gravel, dry, nonplastic, noncohesive, massive, nonuniform			
D	ND	324	N	BH04	1	1	CCHE				
Total Depth @ 1 ft bgs.											

								Sample Name: BH04		Date: 02/01/2024	
								Site Name: Uncle Don State TB			
								Incident Number: nAPP2401670338			
								03A2270025			
LITHOLOGIC / SOIL SAMPLING LOG								Logged By: Chad Hamilton		Method: Hand Auger	
Coordinates: 32.34144, -103.34473								Hole Diameter: 3"		Total Depth: 2'	
Comments: Field screening conducted with HACH Chloride Test Strips and PetroFlag for chloride and TPH, respectively. Chloride test performed with 1:4 dilution factor of soil to distilled water. No correction factors included.											
Moisture Content	Chloride (ppm)	TPH (ppm)	Staining	Sample ID	Sample Depth (ft bgs)	Depth (ft bgs)	USCS/Rock Symbol	Lithologic Descriptions			
D	NA	NA	Y	BH04	0	0	CCHE	Caliche Pad			
D	ND	37	N	BH04	0.5	0.5	CCHE	Caliche, light to medium tan, mostly medium grain size with some large gravel, dry, nonplastic, noncohesive, massive, nonuniform			
D	ND	NA	N	BH04	1	1	CCHE	Mostly Caliche, light to medium tan, mostly medium grain size with some large gravel, mixed with med to darkbrown sand, dry, nonplastic, noncohesive, massive, nonuniform			
D	ND	NA	N	BH04	2	2	CCHE	Caliche, light to medium tan, mostly medium grain size with some large gravel, dry, nonplastic, noncohesive, massive, nonuniform			
Total Depth @ 2 ft bgs.											



APPENDIX C

Photographic Log



Photographic Log

Matador Production Company

Uncle Don State TB

nAPP2401670338

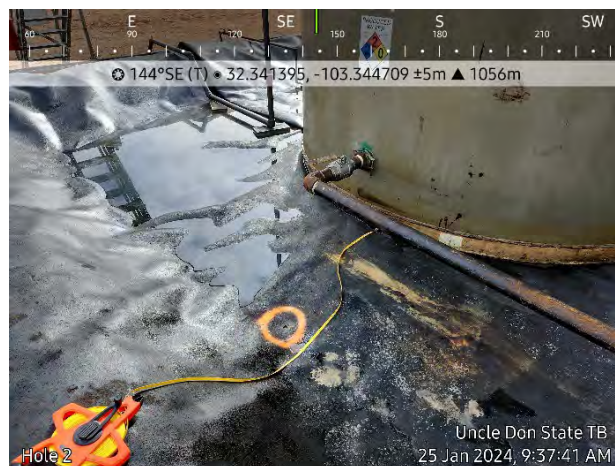


Photograph 1

Date: 01/25/2024

Description: Lease Signage

View: Northeast



Photograph 2

Date: 01/25/2024

Description: Hole 1

View: Southeast



Photograph 3

Date: 01/25/2024

Description: Hole 2

View: East



Photograph 4

Date: 01/25/2024

Description: Hole 3

View: Southwest

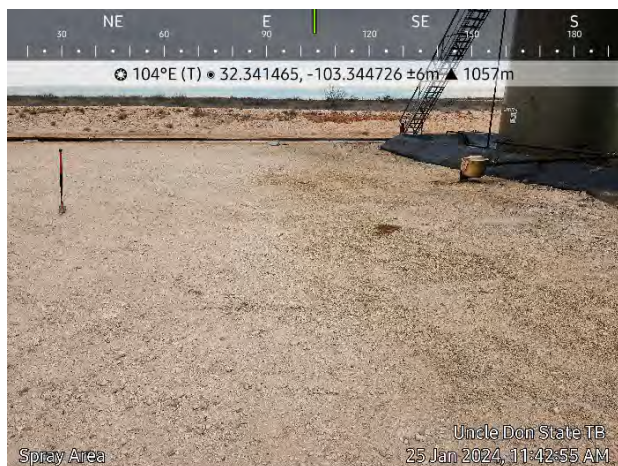


Photographic Log

Matador Production Company

Uncle Don State TB

nAPP2401670338



Photograph 5
Description: Overspray Area
View: East

Date: 01/25/2024



Photograph 6
Description: Vertical Delineation
View: East

Date: 01/31/2024



Photograph 7
Description: Vertical Delineation
View: West

Date: 01/31/2024



Photograph 8
Description: Liner Patch
View: Southeast

Date: 01/31/2024

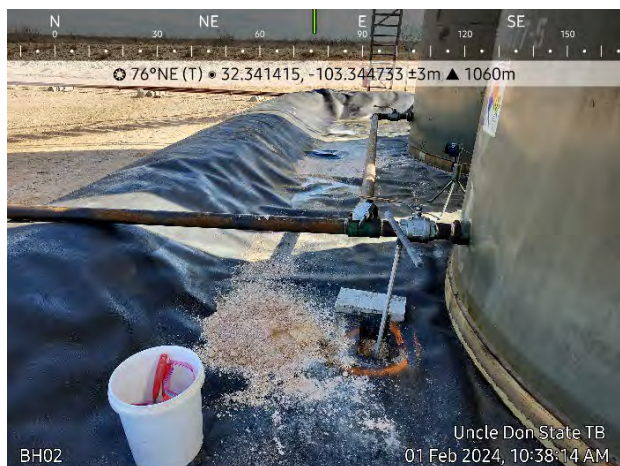


Photographic Log

Matador Production Company

Uncle Don State TB

nAPP2401670338

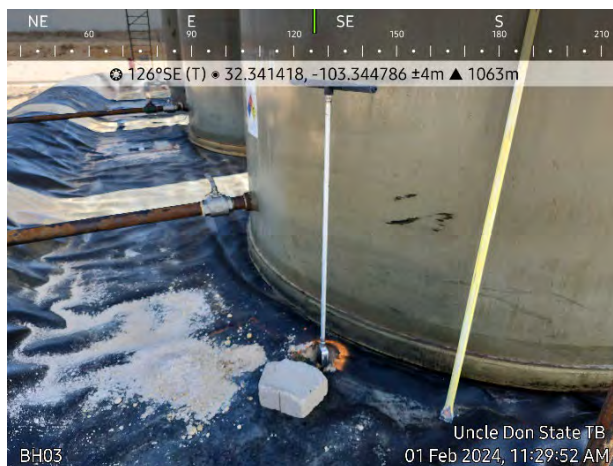


Photograph 9

Date: 02/01/2024

Description: Vertical Delineation

View: East



Photograph 10

Date: 02/01/2024

Description: Vertical Delineation

View: Southeast



Photograph 11

Date: 02/01/2024

Description: Liner Patch

View: East



Photograph 12

Date: 02/01/2024

Description: Liner Patch

View: Southeast

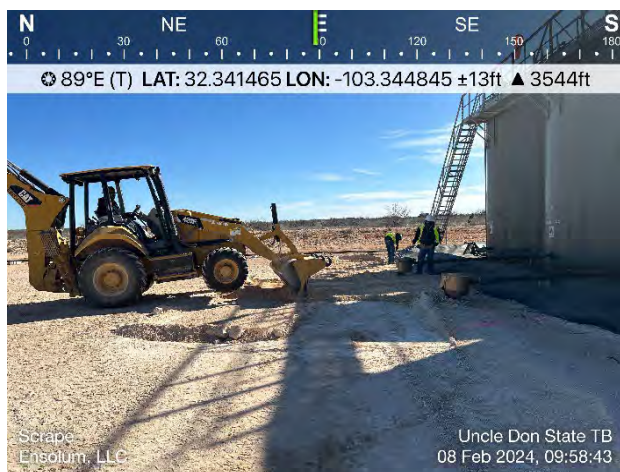


Photographic Log

Matador Production Company

Uncle Don State TB

nAPP2401670338

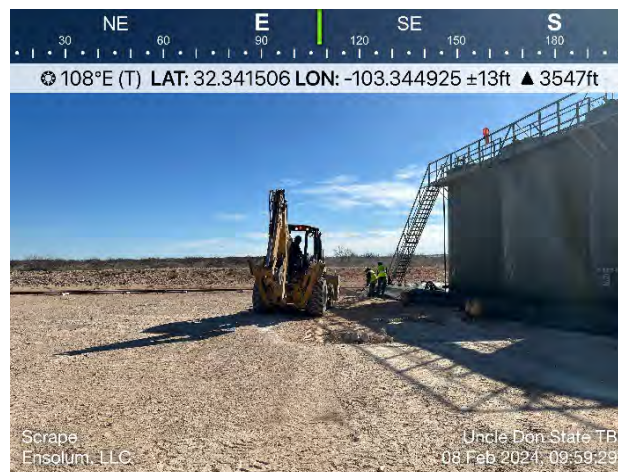


Photograph 13

Date: 02/08/2024

Description: Surface Scrape

View: East



Photograph 14

Date: 02/08/2024

Description: Surface Scrape

View: East



Photograph 15

Date: 02/08/2024

Description: Surface Scrape

View: Southeast



Photograph 16

Date: 02/08/2024

Description: Stockpile

View: Southeast



APPENDIX D

Laboratory Analytical Reports & Chain-of-Custody Documentation

Report to:

Ashley Giovengo



envirotech

Practical Solutions for a Better Tomorrow

Analytical Report

Matador Resources, LLC.

Project Name: Uncle Don State TB

Work Order: E401210

Job Number: 23052-0001

Received: 1/27/2024

Revision: 1

Report Reviewed By:

Walter Hinchman
Laboratory Director
2/2/24

5796 U.S. Hwy 64
Farmington, NM 87401

Phone: (505) 632-1881
Envirotech-inc.com



Envirotech Inc. certifies the test results meet all requirements of TNI unless noted otherwise.
Statement of Data Authenticity: Envirotech Inc. attests the data reported has not been altered in any way.
Partial or incomplete reproduction of this report is prohibited, unless approved by Envirotech Inc.
Envirotech Inc. holds the Utah TNI certification NM00979 for data reported.
Envirotech Inc. holds the Texas TNI certification T104704557 for data reported.

Date Reported: 2/2/24

Ashley Giovengo
5400 LBJ Freeway, Suite 1500
Dallas, TX 75240



Project Name: Uncle Don State TB
Workorder: E401210
Date Received: 1/27/2024 8:30:00AM

Ashley Giovengo,

Thank you for choosing Envirotech, Inc. as your analytical testing laboratory for the sample(s) received on, 1/27/2024 8:30:00AM, under the Project Name: Uncle Don State TB.

The analytical test results summarized in this report with the Project Name: Uncle Don State TB apply to the individual samples collected, identified and submitted bearing the project name on the enclosed chain-of-custody. Subcontracted sample analyses not conducted by Envirotech, Inc., are attached in full as issued by the subcontract laboratory.

Please review the Chain-of-Custody (COC) and Sample Receipt Checklist (SRC) for any issues regarding sample receipt temperature, containers, preservation etc. To best understand your test results, review the entire report summarizing your sample data and the associated quality control batch data.

All reported data in this analytical report were analyzed according to the referenced method(s) and are in compliance with the latest NELAC/TNI standards, unless otherwise noted. Samples or analytical quality control parameters not meeting specific QC criteria are qualified with a data flag. Data flag definitions are located in the Notes and Definitions section of this analytical report.

If you have any questions concerning this report, please feel free to contact Envirotech, Inc.

Respectfully,

Walter Hinchman
Laboratory Director
Office: 505-632-1881
Cell: 775-287-1762
whinchman@envirotech-inc.com

Raina Schwanz
Laboratory Administrator
Office: 505-632-1881
rainaschwanz@envirotech-inc.com

Alexa Michaels
Sample Custody Officer
Office: 505-632-1881
labadmin@envirotech-inc.com

Field Offices:

Southern New Mexico Area

Lynn Jarboe
Laboratory Technical Representative
Office: 505-421-LABS(5227)
Cell: 505-320-4759
ljjarboe@envirotech-inc.com

Michelle Golzaes
Client Representative
Office: 505-421-LABS(5227)
Cell: 505-947-8222
mgonzales@envirotech-inc.com

Envirotech Web Address: www.envirotech-inc.com

Table of Contents

Title Page	1
Cover Page	2
Table of Contents	3
Sample Summary	4
Sample Data	5
SS01 - 0'	5
SS02 - 0'	6
SS03 - 0'	7
SS04 - 0'	8
QC Summary Data	9
QC - Volatile Organics by EPA 8021B	9
QC - Nonhalogenated Organics by EPA 8015D - GRO	10
QC - Nonhalogenated Organics by EPA 8015D - DRO/ORO	11
QC - Anions by EPA 300.0/9056A	12
Definitions and Notes	13
Chain of Custody etc.	14

Sample Summary

Matador Resources, LLC. 5400 LBJ Freeway, Suite 1500 Dallas TX, 75240	Project Name: Uncle Don State TB Project Number: 23052-0001 Project Manager: Ashley Giovengo	Reported: 02/02/24 10:52
---	--	-----------------------------

Client Sample ID	Lab Sample ID	Matrix	Sampled	Received	Container
SS01 - 0'	E401210-01A	Soil	01/25/24	01/27/24	Glass Jar, 2 oz.
SS02 - 0'	E401210-02A	Soil	01/25/24	01/27/24	Glass Jar, 2 oz.
SS03 - 0'	E401210-03A	Soil	01/25/24	01/27/24	Glass Jar, 2 oz.
SS04 - 0'	E401210-04A	Soil	01/25/24	01/27/24	Glass Jar, 2 oz.



Sample Data

Matador Resources, LLC. 5400 LBJ Freeway, Suite 1500 Dallas TX, 75240	Project Name: Uncle Don State TB Project Number: 23052-0001 Project Manager: Ashley Giovengo	Reported: 2/2/2024 10:52:54AM
---	--	----------------------------------

SS01 - 0'

E401210-01

Analyte	Result	Reporting Limit	Dilution	Prepared	Analyzed	Notes
Volatile Organics by EPA 8021B	mg/kg	mg/kg	Analyst: EG		Batch: 2405033	
Benzene	ND	0.0250	1	01/30/24	01/31/24	
Ethylbenzene	ND	0.0250	1	01/30/24	01/31/24	
Toluene	ND	0.0250	1	01/30/24	01/31/24	
o-Xylene	ND	0.0250	1	01/30/24	01/31/24	
p,m-Xylene	ND	0.0500	1	01/30/24	01/31/24	
Total Xylenes	ND	0.0250	1	01/30/24	01/31/24	
Surrogate: 4-Bromochlorobenzene-PID	93.2 %	70-130		01/30/24	01/31/24	
Nonhalogenated Organics by EPA 8015D - GRO	mg/kg	mg/kg	Analyst: EG		Batch: 2405033	
Gasoline Range Organics (C6-C10)	ND	20.0	1	01/30/24	01/31/24	
Surrogate: 1-Chloro-4-fluorobenzene-FID	95.4 %	70-130		01/30/24	01/31/24	
Nonhalogenated Organics by EPA 8015D - DRO/ORO	mg/kg	mg/kg	Analyst: KM		Batch: 2405056	
Diesel Range Organics (C10-C28)	ND	25.0	1	01/31/24	01/31/24	
Oil Range Organics (C28-C36)	ND	50.0	1	01/31/24	01/31/24	
Surrogate: n-Nonane	106 %	50-200		01/31/24	01/31/24	
Anions by EPA 300.0/9056A	mg/kg	mg/kg	Analyst: DT		Batch: 2405058	
Chloride	120	20.0	1	01/31/24	02/01/24	



Sample Data

Matador Resources, LLC. 5400 LBJ Freeway, Suite 1500 Dallas TX, 75240	Project Name: Uncle Don State TB Project Number: 23052-0001 Project Manager: Ashley Giovengo	Reported: 2/2/2024 10:52:54AM
---	--	----------------------------------

SS02 - 0'

E401210-02

Analyte	Result	Reporting Limit	Dilution	Prepared	Analyzed	Notes
Volatile Organics by EPA 8021B	mg/kg	mg/kg	Analyst: EG		Batch: 2405033	
Benzene	ND	0.0250	1	01/30/24	01/31/24	
Ethylbenzene	ND	0.0250	1	01/30/24	01/31/24	
Toluene	ND	0.0250	1	01/30/24	01/31/24	
o-Xylene	ND	0.0250	1	01/30/24	01/31/24	
p,m-Xylene	ND	0.0500	1	01/30/24	01/31/24	
Total Xylenes	ND	0.0250	1	01/30/24	01/31/24	
Surrogate: 4-Bromochlorobenzene-PID	92.8 %	70-130		01/30/24	01/31/24	
Nonhalogenated Organics by EPA 8015D - GRO	mg/kg	mg/kg	Analyst: EG		Batch: 2405033	
Gasoline Range Organics (C6-C10)	ND	20.0	1	01/30/24	01/31/24	
Surrogate: 1-Chloro-4-fluorobenzene-FID	95.3 %	70-130		01/30/24	01/31/24	
Nonhalogenated Organics by EPA 8015D - DRO/ORO	mg/kg	mg/kg	Analyst: KM		Batch: 2405056	
Diesel Range Organics (C10-C28)	ND	25.0	1	01/31/24	01/31/24	
Oil Range Organics (C28-C36)	ND	50.0	1	01/31/24	01/31/24	
Surrogate: n-Nonane	108 %	50-200		01/31/24	01/31/24	
Anions by EPA 300.0/9056A	mg/kg	mg/kg	Analyst: DT		Batch: 2405058	
Chloride	34.2	20.0	1	01/31/24	02/01/24	



Sample Data

Matador Resources, LLC. 5400 LBJ Freeway, Suite 1500 Dallas TX, 75240	Project Name: Uncle Don State TB Project Number: 23052-0001 Project Manager: Ashley Giovengo	Reported: 2/2/2024 10:52:54AM
---	--	----------------------------------

SS03 - 0'

E401210-03

Analyte	Result	Reporting Limit	Dilution	Prepared	Analyzed	Notes
Volatile Organics by EPA 8021B	mg/kg	mg/kg	Analyst: EG		Batch: 2405033	
Benzene	ND	0.0250	1	01/30/24	01/31/24	
Ethylbenzene	ND	0.0250	1	01/30/24	01/31/24	
Toluene	ND	0.0250	1	01/30/24	01/31/24	
o-Xylene	ND	0.0250	1	01/30/24	01/31/24	
p,m-Xylene	ND	0.0500	1	01/30/24	01/31/24	
Total Xylenes	ND	0.0250	1	01/30/24	01/31/24	
Surrogate: 4-Bromochlorobenzene-PID	93.0 %	70-130		01/30/24	01/31/24	
Nonhalogenated Organics by EPA 8015D - GRO	mg/kg	mg/kg	Analyst: EG		Batch: 2405033	
Gasoline Range Organics (C6-C10)	ND	20.0	1	01/30/24	01/31/24	
Surrogate: 1-Chloro-4-fluorobenzene-FID	95.6 %	70-130		01/30/24	01/31/24	
Nonhalogenated Organics by EPA 8015D - DRO/ORO	mg/kg	mg/kg	Analyst: KM		Batch: 2405056	
Diesel Range Organics (C10-C28)	ND	25.0	1	01/31/24	01/31/24	
Oil Range Organics (C28-C36)	ND	50.0	1	01/31/24	01/31/24	
Surrogate: n-Nonane	106 %	50-200		01/31/24	01/31/24	
Anions by EPA 300.0/9056A	mg/kg	mg/kg	Analyst: DT		Batch: 2405058	
Chloride	29.7	20.0	1	01/31/24	02/01/24	



Sample Data

Matador Resources, LLC. 5400 LBJ Freeway, Suite 1500 Dallas TX, 75240	Project Name: Uncle Don State TB Project Number: 23052-0001 Project Manager: Ashley Giovengo	Reported: 2/2/2024 10:52:54AM
---	--	----------------------------------

SS04 - 0'

E401210-04

Analyte	Result	Reporting Limit	Dilution	Prepared	Analyzed	Notes
Volatile Organics by EPA 8021B	mg/kg	mg/kg	Analyst: EG		Batch: 2405033	
Benzene	ND	0.0250	1	01/30/24	01/31/24	
Ethylbenzene	ND	0.0250	1	01/30/24	01/31/24	
Toluene	ND	0.0250	1	01/30/24	01/31/24	
o-Xylene	ND	0.0250	1	01/30/24	01/31/24	
p,m-Xylene	ND	0.0500	1	01/30/24	01/31/24	
Total Xylenes	ND	0.0250	1	01/30/24	01/31/24	
<i>Surrogate: 4-Bromochlorobenzene-PID</i>						
	93.6 %	70-130		01/30/24	01/31/24	
Nonhalogenated Organics by EPA 8015D - GRO	mg/kg	mg/kg	Analyst: EG		Batch: 2405033	
Gasoline Range Organics (C6-C10)	ND	20.0	1	01/30/24	01/31/24	
<i>Surrogate: 1-Chloro-4-fluorobenzene-FID</i>						
	95.5 %	70-130		01/30/24	01/31/24	
Nonhalogenated Organics by EPA 8015D - DRO/ORO	mg/kg	mg/kg	Analyst: KM		Batch: 2405056	
Diesel Range Organics (C10-C28)	ND	25.0	1	01/31/24	01/31/24	
Oil Range Organics (C28-C36)	ND	50.0	1	01/31/24	01/31/24	
<i>Surrogate: n-Nonane</i>						
	107 %	50-200		01/31/24	01/31/24	
Anions by EPA 300.0/9056A	mg/kg	mg/kg	Analyst: DT		Batch: 2405058	
Chloride	ND	20.0	1	01/31/24	02/01/24	



QC Summary Data

Matador Resources, LLC.	Project Name:	Uncle Don State TB	Reported:
5400 LBJ Freeway, Suite 1500	Project Number:	23052-0001	
Dallas TX, 75240	Project Manager:	Ashley Giovengo	2/2/2024 10:52:54AM

Volatile Organics by EPA 8021B

Analyst: EG

Analyte	Result mg/kg	Reporting Limit mg/kg	Spike Level mg/kg	Source Result mg/kg	Rec %	Rec Limits %	RPD %	RPD Limit %	Notes
---------	-----------------	-----------------------------	-------------------------	---------------------------	----------	--------------------	----------	-------------------	-------

Blank (2405033-BLK1) Prepared: 01/30/24 Analyzed: 01/31/24

Benzene	ND	0.0250							
Ethylbenzene	ND	0.0250							
Toluene	ND	0.0250							
o-Xylene	ND	0.0250							
p,m-Xylene	ND	0.0500							
Total Xylenes	ND	0.0250							

Surrogate: 4-Bromochlorobenzene-PID 7.50 8.00 93.7 70-130

LCS (2405033-BS1) Prepared: 01/30/24 Analyzed: 01/31/24

Benzene	4.75	0.0250	5.00		95.0	70-130			
Ethylbenzene	5.01	0.0250	5.00		100	70-130			
Toluene	4.97	0.0250	5.00		99.5	70-130			
o-Xylene	5.02	0.0250	5.00		100	70-130			
p,m-Xylene	10.2	0.0500	10.0		102	70-130			
Total Xylenes	15.2	0.0250	15.0		101	70-130			

Surrogate: 4-Bromochlorobenzene-PID 7.56 8.00 94.5 70-130

Matrix Spike (2405033-MS1) Source: E401188-01 Prepared: 01/30/24 Analyzed: 01/31/24

Benzene	4.16	0.0250	5.00	ND	83.2	54-133			
Ethylbenzene	4.39	0.0250	5.00	ND	87.9	61-133			
Toluene	4.36	0.0250	5.00	ND	87.2	61-130			
o-Xylene	4.40	0.0250	5.00	ND	88.0	63-131			
p,m-Xylene	8.97	0.0500	10.0	ND	89.7	63-131			
Total Xylenes	13.4	0.0250	15.0	ND	89.1	63-131			

Surrogate: 4-Bromochlorobenzene-PID 7.72 8.00 96.5 70-130

Matrix Spike Dup (2405033-MSD1) Source: E401188-01 Prepared: 01/30/24 Analyzed: 01/31/24

Benzene	4.08	0.0250	5.00	ND	81.7	54-133	1.87	20	
Ethylbenzene	4.32	0.0250	5.00	ND	86.4	61-133	1.66	20	
Toluene	4.28	0.0250	5.00	ND	85.6	61-130	1.85	20	
o-Xylene	4.34	0.0250	5.00	ND	86.9	63-131	1.34	20	
p,m-Xylene	8.83	0.0500	10.0	ND	88.3	63-131	1.54	20	
Total Xylenes	13.2	0.0250	15.0	ND	87.8	63-131	1.47	20	

Surrogate: 4-Bromochlorobenzene-PID 7.68 8.00 96.0 70-130



QC Summary Data

Matador Resources, LLC.	Project Name:	Uncle Don State TB	Reported:
5400 LBJ Freeway, Suite 1500	Project Number:	23052-0001	
Dallas TX, 75240	Project Manager:	Ashley Giovengo	2/2/2024 10:52:54AM

Nonhalogenated Organics by EPA 8015D - GRO

Analyst: EG

Analyte	Result mg/kg	Reporting Limit mg/kg	Spike Level mg/kg	Source Result mg/kg	Rec %	Rec Limits %	RPD %	RPD Limit %	Notes
---------	-----------------	-----------------------------	-------------------------	---------------------------	----------	--------------------	----------	-------------------	-------

Blank (2405033-BLK1) Prepared: 01/30/24 Analyzed: 01/31/24

Gasoline Range Organics (C6-C10)	ND	20.0							
Surrogate: 1-Chloro-4-fluorobenzene-FID	7.64		8.00		95.5	70-130			

LCS (2405033-BS2) Prepared: 01/30/24 Analyzed: 01/31/24

Gasoline Range Organics (C6-C10)	48.1	20.0	50.0		96.3	70-130			
Surrogate: 1-Chloro-4-fluorobenzene-FID	7.89		8.00		98.7	70-130			

Matrix Spike (2405033-MS2) Source: E401188-01 Prepared: 01/30/24 Analyzed: 01/31/24

Gasoline Range Organics (C6-C10)	52.3	20.0	50.0	ND	105	70-130			
Surrogate: 1-Chloro-4-fluorobenzene-FID	7.69		8.00		96.1	70-130			

Matrix Spike Dup (2405033-MSD2) Source: E401188-01 Prepared: 01/30/24 Analyzed: 01/31/24

Gasoline Range Organics (C6-C10)	46.7	20.0	50.0	ND	93.5	70-130	11.3	20	
Surrogate: 1-Chloro-4-fluorobenzene-FID	7.71		8.00		96.3	70-130			



QC Summary Data

Matador Resources, LLC.	Project Name:	Uncle Don State TB	Reported:
5400 LBJ Freeway, Suite 1500	Project Number:	23052-0001	
Dallas TX, 75240	Project Manager:	Ashley Giovengo	2/2/2024 10:52:54AM

Nonhalogenated Organics by EPA 8015D - DRO/ORO

Analyst: KM

Analyte	Result mg/kg	Reporting Limit mg/kg	Spike Level mg/kg	Source Result mg/kg	Rec %	Rec Limits %	RPD %	RPD Limit %	Notes
---------	-----------------	-----------------------------	-------------------------	---------------------------	----------	--------------------	----------	-------------------	-------

Blank (2405056-BLK1)					Prepared: 01/31/24 Analyzed: 01/31/24				
Diesel Range Organics (C10-C28)	ND	25.0							
Oil Range Organics (C28-C36)	ND	50.0							
Surrogate: n-Nonane	53.7		50.0		107	50-200			

LCS (2405056-BS1)					Prepared: 01/31/24 Analyzed: 01/31/24				
Diesel Range Organics (C10-C28)	236	25.0	250		94.5	38-132			
Surrogate: n-Nonane	52.4		50.0		105	50-200			

Matrix Spike (2405056-MS1)					Source: E401191-01		Prepared: 01/31/24 Analyzed: 01/31/24		
Diesel Range Organics (C10-C28)	236	25.0	250	ND	94.3	38-132			
Surrogate: n-Nonane	53.7		50.0		107	50-200			

Matrix Spike Dup (2405056-MSD1)					Source: E401191-01		Prepared: 01/31/24 Analyzed: 01/31/24		
Diesel Range Organics (C10-C28)	235	25.0	250	ND	94.2	38-132	0.0928	20	
Surrogate: n-Nonane	53.4		50.0		107	50-200			



QC Summary Data

Matador Resources, LLC. 5400 LBJ Freeway, Suite 1500 Dallas TX, 75240	Project Name: Uncle Don State TB Project Number: 23052-0001 Project Manager: Ashley Giovengo	Reported: 2/2/2024 10:52:54AM
---	--	--------------------------------------

Anions by EPA 300.0/9056A

Analyst: DT

Analyte	Result mg/kg	Reporting Limit mg/kg	Spike Level mg/kg	Source Result mg/kg	Rec %	Rec Limits %	RPD %	RPD Limit %	Notes
---------	-----------------	-----------------------------	-------------------------	---------------------------	----------	--------------------	----------	-------------------	-------

Blank (2405058-BLK1)					Prepared: 01/31/24 Analyzed: 01/31/24				
Chloride	ND	20.0							
LCS (2405058-BS1)					Prepared: 01/31/24 Analyzed: 01/31/24				
Chloride	250	20.0	250		100	90-110			
Matrix Spike (2405058-MS1)					Source: E401208-03		Prepared: 01/31/24 Analyzed: 01/31/24		
Chloride	1350	20.0	250	1250	38.1	80-120			M4
Matrix Spike Dup (2405058-MSD1)					Source: E401208-03		Prepared: 01/31/24 Analyzed: 01/31/24		
Chloride	1380	20.0	250	1250	51.3	80-120	2.41	20	M4

QC Summary Report Comment:
Calculations are based off of the raw (non-rounded) data. However, for reporting purposes all QC data is rounded to three significant figures.
Therefore, hand calculated values may differ slightly.



Definitions and Notes

Matador Resources, LLC.	Project Name:	Uncle Don State TB	
5400 LBJ Freeway, Suite 1500	Project Number:	23052-0001	Reported:
Dallas TX, 75240	Project Manager:	Ashley Giovengo	02/02/24 10:52

- M4 Matrix spike recovery value is suspect since the analyte concentration in the sample is disproportionate to the spike level. The associated LCS spike recovery was acceptable.
- ND Analyte NOT DETECTED at or above the reporting limit
- NR Not Reported
- RPD Relative Percent Difference
- DNI Did Not Ignite
- DNR Did not react with the addition of acid or base.

Note (1): Methods marked with ** are non-accredited methods.

Note (2): Soil data is reported on an "as received" weight basis, unless reported otherwise.



Client: Matador Production Company.	Bill To Attention: Matador Production Company Address: on file City, State, Zip: Phone: (337)319-8398 Email: clinton.talley@matadorresources.com	Lab Use Only		TAT				EPA Program				
Project: Uncle Don State TB		Lab WO#	Job Number	1D	2D	3D	Standard	CWA	SDWA			
Project Manager: Ashley Gioveno		E 40121D	23052-0001				X					
Address: 3122 National Parks Hwy		Analysis and Method								RCRA		
City, State, Zip: Carlsbad NM, 88220		TPH GRO/DRO/ORO by 8015	BTEX by 8021	VOC by 8260	Metals 6010	Chloride 300.0		NM	TX			
Phone: 575-988-0055								State				
Email: agioveno@ensolum.com								NM	CO	UT	AZ	TX
Report due by:								X				

Time Sampled	Date Sampled	Matrix	No. of Containers	Sample ID	Lab Number	TPH GRO/DRO/ORO by 8015	BTEX by 8021	VOC by 8260	Metals 6010	Chloride 300.0		BGDOC	TX	GDGC	Remarks
10:01	1/25/2024	S	1	SS01 - 0'	1							X			
10:10	1/25/2024	S	1	SS02 - 0'	2							X			
10:11	1/25/2024	S	1	SS03 - 0'	3							X			
11:06	1/25/2024	S	1	SS04 - 0'	4							X			

Additional Instructions: Please CC: cburton@ensolum.com, agioveno@ensolum.com, chadhmilton@ensolum.com, ehaft@ensolum.com, thillard@ensolum.com

I, (field sampler), attest to the validity and authenticity of this sample. I am aware that tampering with or intentionally mislabelling the sample location, date or time of collection is considered fraud and may be grounds for legal action.

Sampled by: Chad Hamilton

Samples requiring thermal preservation must be received on ice the day they are sampled or received packed in ice at an avg temp above 0 but less than 6 °C on subsequent days.

Relinquished by: (Signature)	Date	Time	Received by: (Signature)	Date	Time	Lab Use Only Received on ice: (Y) / N T1 T2 T3 AVG Temp °C 4
Relinquished by: (Signature)	01/26/24	8:00	Michael Gay	1-26-24	0800	
Relinquished by: (Signature)	1-26-24	175	Andrew H	1-26-24	1715	
Relinquished by: (Signature)	Date	Time	Received by: (Signature)	Date	Time	
Andrew H	1-26-24	2500		1-29-24	845	

Sample Matrix: S - Soil, Sd - Solid, Sg - Sludge, A - Aqueous, O - Other

Container Type: g - glass, p - poly/plastic, ag - amber glass, v - VOA

Note: Samples are discarded 30 days after results are reported unless other arrangements are made. Hazardous samples will be returned to client or disposed of at the client expense. The report for the analysis of the above samples is applicable only to those samples received by the laboratory with this COC. The liability of the laboratory is limited to the amount paid for on the report.



Envirotech Analytical Laboratory

Printed: 1/29/2024 4:12:44PM

Sample Receipt Checklist (SRC)

Instructions: Please take note of any NO checkmarks.

If we receive no response concerning these items within 24 hours of the date of this notice, all the samples will be analyzed as requested.

Client:	Matador Resources, LLC.	Date Received:	01/27/24 08:30	Work Order ID:	E401210
Phone:	(972) 371-5200	Date Logged In:	01/29/24 11:34	Logged In By:	Angelina Pineda
Email:	agiovngo@ensolum.com	Due Date:	02/02/24 17:00 (4 day TAT)		

Chain of Custody (COC)

1. Does the sample ID match the COC? Yes
2. Does the number of samples per sampling site location match the COC? Yes
3. Were samples dropped off by client or carrier? Yes
4. Was the COC complete, i.e., signatures, dates/times, requested analyses? Yes
5. Were all samples received within holding time? Yes

Note: Analysis, such as pH which should be conducted in the field, i.e., 15 minute hold time, are not included in this discussion.

Carrier: CourierComments/ResolutionSample Turn Around Time (TAT)

6. Did the COC indicate standard TAT, or Expedited TAT? Yes

Sample Cooler

7. Was a sample cooler received? Yes
8. If yes, was cooler received in good condition? Yes
9. Was the sample(s) received intact, i.e., not broken? Yes
10. Were custody/security seals present? No
11. If yes, were custody/security seals intact? NA
12. Was the sample received on ice? If yes, the recorded temp is 4°C, i.e., 6°±2°C? Yes

Note: Thermal preservation is not required, if samples are received w/i 15 minutes of sampling

13. If no visible ice, record the temperature. Actual sample temperature: 4°C

Sample Container

14. Are aqueous VOC samples present? No
15. Are VOC samples collected in VOA Vials? NA
16. Is the head space less than 6-8 mm (pea sized or less)? NA
17. Was a trip blank (TB) included for VOC analyses? NA
18. Are non-VOC samples collected in the correct containers? Yes
19. Is the appropriate volume/weight or number of sample containers collected? Yes

Field Label

20. Were field sample labels filled out with the minimum information:
Sample ID? Yes
Date/Time Collected? Yes
Collectors name? Yes

Sample Preservation

21. Does the COC or field labels indicate the samples were preserved? No
22. Are sample(s) correctly preserved? NA
24. Is lab filtration required and/or requested for dissolved metals? No

Multiphase Sample Matrix

26. Does the sample have more than one phase, i.e., multiphase? No
27. If yes, does the COC specify which phase(s) is to be analyzed? NA

Subcontract Laboratory

28. Are samples required to get sent to a subcontract laboratory? No
29. Was a subcontract laboratory specified by the client and if so who? NA Subcontract Lab: NA

Client Instruction

Signature of client authorizing changes to the COC or sample disposition.

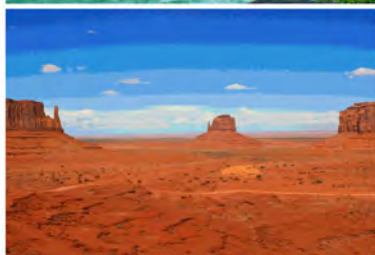
Date



envirotech Inc.

Report to:

Ashley Giovengo



envirotech

Practical Solutions for a Better Tomorrow

Analytical Report

Matador Resources, LLC.

Project Name: Uncle Don State TB

Work Order: E402026

Job Number: 23052-0001

Received: 2/2/2024

Revision: 2

Report Reviewed By:

Walter Hinchman
Laboratory Director
2/8/24

5796 U.S. Hwy 64
Farmington, NM 87401

Phone: (505) 632-1881
Envirotech-inc.com



Envirotech Inc. certifies the test results meet all requirements of TNI unless noted otherwise.
Statement of Data Authenticity: Envirotech Inc. attests the data reported has not been altered in any way.
Partial or incomplete reproduction of this report is prohibited, unless approved by Envirotech Inc.
Envirotech Inc. holds the Utah TNI certification NM00979 for data reported.
Envirotech Inc. holds the Texas TNI certification T104704557 for data reported.

Date Reported: 2/8/24

Ashley Giovengo
5400 LBJ Freeway, Suite 1500
Dallas, TX 75240



Project Name: Uncle Don State TB
Workorder: E402026
Date Received: 2/2/2024 6:10:00AM

Ashley Giovengo,

Thank you for choosing Envirotech, Inc. as your analytical testing laboratory for the sample(s) received on, 2/2/2024 6:10:00AM, under the Project Name: Uncle Don State TB.

The analytical test results summarized in this report with the Project Name: Uncle Don State TB apply to the individual samples collected, identified and submitted bearing the project name on the enclosed chain-of-custody. Subcontracted sample analyses not conducted by Envirotech, Inc., are attached in full as issued by the subcontract laboratory.

Please review the Chain-of-Custody (COC) and Sample Receipt Checklist (SRC) for any issues regarding sample receipt temperature, containers, preservation etc. To best understand your test results, review the entire report summarizing your sample data and the associated quality control batch data.

All reported data in this analytical report were analyzed according to the referenced method(s) and are in compliance with the latest NELAC/TNI standards, unless otherwise noted. Samples or analytical quality control parameters not meeting specific QC criteria are qualified with a data flag. Data flag definitions are located in the Notes and Definitions section of this analytical report.

If you have any questions concerning this report, please feel free to contact Envirotech, Inc.

Respectfully,

Walter Hinchman
Laboratory Director
Office: 505-632-1881
Cell: 775-287-1762
whinchman@envirotech-inc.com

Raina Schwanz
Laboratory Administrator
Office: 505-632-1881
rainaschwanz@envirotech-inc.com

Alexa Michaels
Sample Custody Officer
Office: 505-632-1881
labadmin@envirotech-inc.com

Field Offices:

Southern New Mexico Area

Lynn Jarboe
Laboratory Technical Representative
Office: 505-421-LABS(5227)
Cell: 505-320-4759
ljjarboe@envirotech-inc.com

Michelle Golzaes
Client Representative
Office: 505-421-LABS(5227)
Cell: 505-947-8222
mgonzales@envirotech-inc.com

Envirotech Web Address: www.envirotech-inc.com

Table of Contents

Title Page	1
Cover Page	2
Table of Contents	3
Sample Summary	4
Sample Data	5
BH01 - 0'	5
BH01 - 2'	6
BH01 - 4'	7
BH04 - 0'	8
BH04 - 0.5'	9
QC Summary Data	10
QC - Volatile Organic Compounds by EPA 8260B	10
QC - Nonhalogenated Organics by EPA 8015D - GRO	11
QC - Nonhalogenated Organics by EPA 8015D - DRO/ORO	12
QC - Anions by EPA 300.0/9056A	13
Definitions and Notes	14
Chain of Custody etc.	15

Sample Summary

Matador Resources, LLC. 5400 LBJ Freeway, Suite 1500 Dallas TX, 75240	Project Name: Uncle Don State TB Project Number: 23052-0001 Project Manager: Ashley Giovengo	Reported: 02/08/24 15:59
---	--	-----------------------------

Client Sample ID	Lab Sample ID	Matrix	Sampled	Received	Container
BH01 - 0'	E402026-01A	Soil	01/31/24	02/02/24	Glass Jar, 2 oz.
BH01 - 2'	E402026-02A	Soil	01/31/24	02/02/24	Glass Jar, 2 oz.
BH01 - 4'	E402026-03A	Soil	01/31/24	02/02/24	Glass Jar, 2 oz.
BH01 - 5'	E402026-04A	Soil	01/31/24	02/02/24	Glass Jar, 2 oz.
BH04 - 0'	E402026-05A	Soil	01/31/24	02/02/24	Glass Jar, 2 oz.
BH04 - 0.5'	E402026-06A	Soil	01/31/24	02/02/24	Glass Jar, 2 oz.
BH04 - 1'	E402026-07A	Soil	01/31/24	02/02/24	Glass Jar, 2 oz.



Sample Data

Matador Resources, LLC. 5400 LBJ Freeway, Suite 1500 Dallas TX, 75240	Project Name: Uncle Don State TB Project Number: 23052-0001 Project Manager: Ashley Giovengo	Reported: 2/8/2024 3:59:29PM
---	--	---------------------------------

BH01 - 0'

E402026-01

Analyte	Result	Reporting Limit	Dilution	Prepared	Analyzed	Notes
Volatile Organic Compounds by EPA 8260B	mg/kg	mg/kg	Analyst: IY		Batch: 2405150	
Benzene	6.06	0.500	20	02/02/24	02/07/24	
Ethylbenzene	77.1	0.500	20	02/02/24	02/07/24	
Toluene	146	0.500	20	02/02/24	02/07/24	
o-Xylene	53.4	0.500	20	02/02/24	02/07/24	
p,m-Xylene	96.2	1.00	20	02/02/24	02/07/24	
Total Xylenes	150	0.500	20	02/02/24	02/07/24	
Surrogate: Bromofluorobenzene		106 %	70-130	02/02/24	02/07/24	
Surrogate: 1,2-Dichloroethane-d4		100 %	70-130	02/02/24	02/07/24	
Surrogate: Toluene-d8		94.7 %	70-130	02/02/24	02/07/24	
Nonhalogenated Organics by EPA 8015D - GRO	mg/kg	mg/kg	Analyst: IY		Batch: 2405150	
Gasoline Range Organics (C6-C10)	1560	400	20	02/02/24	02/07/24	
Surrogate: Bromofluorobenzene		106 %	70-130	02/02/24	02/07/24	
Surrogate: 1,2-Dichloroethane-d4		100 %	70-130	02/02/24	02/07/24	
Surrogate: Toluene-d8		94.7 %	70-130	02/02/24	02/07/24	
Nonhalogenated Organics by EPA 8015D - DRO/ORO	mg/kg	mg/kg	Analyst: KM		Batch: 2406042	
Diesel Range Organics (C10-C28)	15700	500	20	02/06/24	02/06/24	
Oil Range Organics (C28-C36)	4170	1000	20	02/06/24	02/06/24	
Surrogate: n-Nonane		959 %	50-200	02/06/24	02/06/24	S5
Anions by EPA 300.0/9056A	mg/kg	mg/kg	Analyst: IY		Batch: 2406001	
Chloride	ND	20.0	1	02/04/24	02/05/24	



Sample Data

Matador Resources, LLC.
5400 LBJ Freeway, Suite 1500
Dallas TX, 75240

Project Name: Uncle Don State TB
Project Number: 23052-0001
Project Manager: Ashley Giovengo

Reported:
2/8/2024 3:59:29PM

BH01 - 2'

E402026-02

Analyte	Result	Reporting Limit	Dilution	Prepared	Analyzed	Notes
Volatile Organic Compounds by EPA 8260B						
	mg/kg	mg/kg		Analyst: IY		Batch: 2405150
Benzene	ND	0.0250	1	02/02/24	02/06/24	
Ethylbenzene	ND	0.0250	1	02/02/24	02/06/24	
Toluene	0.0285	0.0250	1	02/02/24	02/06/24	
o-Xylene	ND	0.0250	1	02/02/24	02/06/24	
p,m-Xylene	ND	0.0500	1	02/02/24	02/06/24	
Total Xylenes	ND	0.0250	1	02/02/24	02/06/24	
Surrogate: Bromofluorobenzene		108 %	70-130	02/02/24	02/06/24	
Surrogate: 1,2-Dichloroethane-d4		99.6 %	70-130	02/02/24	02/06/24	
Surrogate: Toluene-d8		95.0 %	70-130	02/02/24	02/06/24	
Nonhalogenated Organics by EPA 8015D - GRO						
	mg/kg	mg/kg		Analyst: IY		Batch: 2405150
Gasoline Range Organics (C6-C10)	ND	20.0	1	02/02/24	02/06/24	
Surrogate: Bromofluorobenzene		108 %	70-130	02/02/24	02/06/24	
Surrogate: 1,2-Dichloroethane-d4		99.6 %	70-130	02/02/24	02/06/24	
Surrogate: Toluene-d8		95.0 %	70-130	02/02/24	02/06/24	
Nonhalogenated Organics by EPA 8015D - DRO/ORO						
	mg/kg	mg/kg		Analyst: KM		Batch: 2406042
Diesel Range Organics (C10-C28)	55.2	25.0	1	02/06/24	02/06/24	
Oil Range Organics (C28-C36)	ND	50.0	1	02/06/24	02/06/24	
Surrogate: n-Nonane		78.1 %	50-200	02/06/24	02/06/24	
Anions by EPA 300.0/9056A						
	mg/kg	mg/kg		Analyst: IY		Batch: 2406001
Chloride	643	20.0	1	02/04/24	02/05/24	



Sample Data

Matador Resources, LLC.
5400 LBJ Freeway, Suite 1500
Dallas TX, 75240

Project Name: Uncle Don State TB
Project Number: 23052-0001
Project Manager: Ashley Giovengo

Reported:
2/8/2024 3:59:29PM

BH01 - 4'

E402026-03

Analyte	Result	Reporting Limit	Dilution	Prepared	Analyzed	Notes
Volatile Organic Compounds by EPA 8260B						
	mg/kg	mg/kg		Analyst: IY		Batch: 2405150
Benzene	ND	0.0250	1	02/02/24	02/06/24	
Ethylbenzene	ND	0.0250	1	02/02/24	02/06/24	
Toluene	ND	0.0250	1	02/02/24	02/06/24	
o-Xylene	ND	0.0250	1	02/02/24	02/06/24	
p,m-Xylene	ND	0.0500	1	02/02/24	02/06/24	
Total Xylenes	ND	0.0250	1	02/02/24	02/06/24	
Surrogate: Bromofluorobenzene		108 %	70-130	02/02/24	02/06/24	
Surrogate: 1,2-Dichloroethane-d4		104 %	70-130	02/02/24	02/06/24	
Surrogate: Toluene-d8		93.7 %	70-130	02/02/24	02/06/24	
Nonhalogenated Organics by EPA 8015D - GRO						
	mg/kg	mg/kg		Analyst: IY		Batch: 2405150
Gasoline Range Organics (C6-C10)	ND	20.0	1	02/02/24	02/06/24	
Surrogate: Bromofluorobenzene		108 %	70-130	02/02/24	02/06/24	
Surrogate: 1,2-Dichloroethane-d4		104 %	70-130	02/02/24	02/06/24	
Surrogate: Toluene-d8		93.7 %	70-130	02/02/24	02/06/24	
Nonhalogenated Organics by EPA 8015D - DRO/ORO						
	mg/kg	mg/kg		Analyst: KM		Batch: 2406042
Diesel Range Organics (C10-C28)	ND	25.0	1	02/06/24	02/06/24	
Oil Range Organics (C28-C36)	ND	50.0	1	02/06/24	02/06/24	
Surrogate: n-Nonane		81.1 %	50-200	02/06/24	02/06/24	
Anions by EPA 300.0/9056A						
	mg/kg	mg/kg		Analyst: IY		Batch: 2406001
Chloride	78.8	20.0	1	02/04/24	02/05/24	



Sample Data

Matador Resources, LLC. 5400 LBJ Freeway, Suite 1500 Dallas TX, 75240	Project Name: Uncle Don State TB Project Number: 23052-0001 Project Manager: Ashley Giovengo	Reported: 2/8/2024 3:59:29PM
---	--	---------------------------------

BH04 - 0'

E402026-05

Analyte	Result	Reporting Limit	Dilution	Prepared	Analyzed	Notes
Volatile Organic Compounds by EPA 8260B						
	mg/kg	mg/kg	Analyst: IY		Batch: 2405150	
Benzene	ND	0.0250	1	02/02/24	02/06/24	
Ethylbenzene	ND	0.0250	1	02/02/24	02/06/24	
Toluene	ND	0.0250	1	02/02/24	02/06/24	
o-Xylene	ND	0.0250	1	02/02/24	02/06/24	
p,m-Xylene	ND	0.0500	1	02/02/24	02/06/24	
Total Xylenes	ND	0.0250	1	02/02/24	02/06/24	
Surrogate: Bromofluorobenzene		108 %	70-130	02/02/24	02/06/24	
Surrogate: 1,2-Dichloroethane-d4		104 %	70-130	02/02/24	02/06/24	
Surrogate: Toluene-d8		94.5 %	70-130	02/02/24	02/06/24	
Nonhalogenated Organics by EPA 8015D - GRO						
	mg/kg	mg/kg	Analyst: IY		Batch: 2405150	
Gasoline Range Organics (C6-C10)	ND	20.0	1	02/02/24	02/06/24	
Surrogate: Bromofluorobenzene		108 %	70-130	02/02/24	02/06/24	
Surrogate: 1,2-Dichloroethane-d4		104 %	70-130	02/02/24	02/06/24	
Surrogate: Toluene-d8		94.5 %	70-130	02/02/24	02/06/24	
Nonhalogenated Organics by EPA 8015D - DRO/ORO						
	mg/kg	mg/kg	Analyst: KM		Batch: 2406042	
Diesel Range Organics (C10-C28)	ND	25.0	1	02/06/24	02/06/24	
Oil Range Organics (C28-C36)	ND	50.0	1	02/06/24	02/06/24	
Surrogate: n-Nonane		65.0 %	50-200	02/06/24	02/06/24	
Anions by EPA 300.0/9056A						
	mg/kg	mg/kg	Analyst: IY		Batch: 2406001	
Chloride	448	20.0	1	02/04/24	02/05/24	



Sample Data

Matador Resources, LLC.
5400 LBJ Freeway, Suite 1500
Dallas TX, 75240

Project Name: Uncle Don State TB
Project Number: 23052-0001
Project Manager: Ashley Giovengo

Reported:
2/8/2024 3:59:29PM

BH04 - 0.5'

E402026-06

Analyte	Result	Reporting Limit	Dilution	Prepared	Analyzed	Notes
Volatile Organic Compounds by EPA 8260B						
	mg/kg	mg/kg		Analyst: IY		Batch: 2405150
Benzene	ND	0.0250	1	02/02/24	02/06/24	
Ethylbenzene	ND	0.0250	1	02/02/24	02/06/24	
Toluene	ND	0.0250	1	02/02/24	02/06/24	
o-Xylene	ND	0.0250	1	02/02/24	02/06/24	
p,m-Xylene	ND	0.0500	1	02/02/24	02/06/24	
Total Xylenes	ND	0.0250	1	02/02/24	02/06/24	
Surrogate: Bromofluorobenzene		108 %	70-130	02/02/24	02/06/24	
Surrogate: 1,2-Dichloroethane-d4		103 %	70-130	02/02/24	02/06/24	
Surrogate: Toluene-d8		94.0 %	70-130	02/02/24	02/06/24	
Nonhalogenated Organics by EPA 8015D - GRO						
	mg/kg	mg/kg		Analyst: IY		Batch: 2405150
Gasoline Range Organics (C6-C10)	ND	20.0	1	02/02/24	02/06/24	
Surrogate: Bromofluorobenzene		108 %	70-130	02/02/24	02/06/24	
Surrogate: 1,2-Dichloroethane-d4		103 %	70-130	02/02/24	02/06/24	
Surrogate: Toluene-d8		94.0 %	70-130	02/02/24	02/06/24	
Nonhalogenated Organics by EPA 8015D - DRO/ORO						
	mg/kg	mg/kg		Analyst: KM		Batch: 2406042
Diesel Range Organics (C10-C28)	ND	25.0	1	02/06/24	02/06/24	
Oil Range Organics (C28-C36)	ND	50.0	1	02/06/24	02/06/24	
Surrogate: n-Nonane		81.5 %	50-200	02/06/24	02/06/24	
Anions by EPA 300.0/9056A						
	mg/kg	mg/kg		Analyst: IY		Batch: 2406001
Chloride	140	20.0	1	02/04/24	02/05/24	



QC Summary Data

Matador Resources, LLC.	Project Name:	Uncle Don State TB	Reported:
5400 LBJ Freeway, Suite 1500	Project Number:	23052-0001	
Dallas TX, 75240	Project Manager:	Ashley Giovengo	2/8/2024 3:59:29PM

Volatile Organic Compounds by EPA 8260B

Analyst: IY

Analyte	Result	Reporting Limit	Spike Level	Source Result	Rec	Rec Limits	RPD	RPD Limit	Notes
	mg/kg	mg/kg	mg/kg	mg/kg	%	%	%	%	

Blank (2405150-BLK1) Prepared: 02/02/24 Analyzed: 02/06/24

Benzene	ND	0.0250							
Ethylbenzene	ND	0.0250							
Toluene	ND	0.0250							
o-Xylene	ND	0.0250							
p,m-Xylene	ND	0.0500							
Total Xylenes	ND	0.0250							
Surrogate: Bromofluorobenzene	0.543		0.500		109	70-130			
Surrogate: 1,2-Dichloroethane-d4	0.530		0.500		106	70-130			
Surrogate: Toluene-d8	0.470		0.500		94.0	70-130			

LCS (2405150-BS1) Prepared: 02/02/24 Analyzed: 02/06/24

Benzene	2.67	0.0250	2.50		107	70-130			
Ethylbenzene	2.46	0.0250	2.50		98.6	70-130			
Toluene	2.36	0.0250	2.50		94.4	70-130			
o-Xylene	2.42	0.0250	2.50		96.8	70-130			
p,m-Xylene	4.74	0.0500	5.00		94.9	70-130			
Total Xylenes	7.16	0.0250	7.50		95.5	70-130			
Surrogate: Bromofluorobenzene	0.527		0.500		105	70-130			
Surrogate: 1,2-Dichloroethane-d4	0.519		0.500		104	70-130			
Surrogate: Toluene-d8	0.473		0.500		94.5	70-130			

Matrix Spike (2405150-MS1) Source: E402017-04 Prepared: 02/02/24 Analyzed: 02/06/24

Benzene	2.70	0.0250	2.50	ND	108	48-131			
Ethylbenzene	2.53	0.0250	2.50	ND	101	45-135			
Toluene	2.43	0.0250	2.50	ND	97.2	48-130			
o-Xylene	2.40	0.0250	2.50	ND	96.2	43-135			
p,m-Xylene	4.73	0.0500	5.00	ND	94.6	43-135			
Total Xylenes	7.13	0.0250	7.50	ND	95.1	43-135			
Surrogate: Bromofluorobenzene	0.508		0.500		102	70-130			
Surrogate: 1,2-Dichloroethane-d4	0.532		0.500		106	70-130			
Surrogate: Toluene-d8	0.474		0.500		94.7	70-130			

Matrix Spike Dup (2405150-MSD1) Source: E402017-04 Prepared: 02/02/24 Analyzed: 02/06/24

Benzene	2.60	0.0250	2.50	ND	104	48-131	3.96	23	
Ethylbenzene	2.46	0.0250	2.50	ND	98.3	45-135	2.81	27	
Toluene	2.35	0.0250	2.50	ND	94.2	48-130	3.22	24	
o-Xylene	2.42	0.0250	2.50	ND	96.6	43-135	0.456	27	
p,m-Xylene	4.74	0.0500	5.00	ND	94.7	43-135	0.127	27	
Total Xylenes	7.15	0.0250	7.50	ND	95.3	43-135	0.238	27	
Surrogate: Bromofluorobenzene	0.525		0.500		105	70-130			
Surrogate: 1,2-Dichloroethane-d4	0.516		0.500		103	70-130			
Surrogate: Toluene-d8	0.475		0.500		94.9	70-130			



QC Summary Data

Matador Resources, LLC.	Project Name:	Uncle Don State TB	Reported:
5400 LBJ Freeway, Suite 1500	Project Number:	23052-0001	
Dallas TX, 75240	Project Manager:	Ashley Giovengo	2/8/2024 3:59:29PM

Nonhalogenated Organics by EPA 8015D - GRO

Analyst: IY

Analyte	Result mg/kg	Reporting Limit mg/kg	Spike Level mg/kg	Source Result mg/kg	Rec %	Rec Limits %	RPD %	RPD Limit %	Notes
---------	-----------------	-----------------------------	-------------------------	---------------------------	----------	--------------------	----------	-------------------	-------

Blank (2405150-BLK1) Prepared: 02/02/24 Analyzed: 02/06/24

Gasoline Range Organics (C6-C10)	ND	20.0							
Surrogate: Bromofluorobenzene	0.543		0.500		109	70-130			
Surrogate: 1,2-Dichloroethane-d4	0.530		0.500		106	70-130			
Surrogate: Toluene-d8	0.470		0.500		94.0	70-130			

LCS (2405150-BS2) Prepared: 02/02/24 Analyzed: 02/06/24

Gasoline Range Organics (C6-C10)	58.1	20.0	50.0		116	70-130			
Surrogate: Bromofluorobenzene	0.542		0.500		108	70-130			
Surrogate: 1,2-Dichloroethane-d4	0.505		0.500		101	70-130			
Surrogate: Toluene-d8	0.476		0.500		95.2	70-130			

Matrix Spike (2405150-MS2) Source: E402017-04 Prepared: 02/02/24 Analyzed: 02/06/24

Gasoline Range Organics (C6-C10)	53.1	20.0	50.0	ND	106	70-130			
Surrogate: Bromofluorobenzene	0.543		0.500		109	70-130			
Surrogate: 1,2-Dichloroethane-d4	0.521		0.500		104	70-130			
Surrogate: Toluene-d8	0.476		0.500		95.1	70-130			

Matrix Spike Dup (2405150-MSD2) Source: E402017-04 Prepared: 02/02/24 Analyzed: 02/06/24

Gasoline Range Organics (C6-C10)	55.8	20.0	50.0	ND	112	70-130	4.85	20	
Surrogate: Bromofluorobenzene	0.547		0.500		109	70-130			
Surrogate: 1,2-Dichloroethane-d4	0.537		0.500		107	70-130			
Surrogate: Toluene-d8	0.478		0.500		95.6	70-130			



QC Summary Data

Matador Resources, LLC.	Project Name:	Uncle Don State TB	Reported:
5400 LBJ Freeway, Suite 1500	Project Number:	23052-0001	
Dallas TX, 75240	Project Manager:	Ashley Giovengo	2/8/2024 3:59:29PM

Nonhalogenated Organics by EPA 8015D - DRO/ORO

Analyst: KM

Analyte	Result mg/kg	Reporting Limit mg/kg	Spike Level mg/kg	Source Result mg/kg	Rec %	Rec Limits %	RPD %	RPD Limit %	Notes
---------	-----------------	-----------------------------	-------------------------	---------------------------	----------	--------------------	----------	-------------------	-------

Blank (2406042-BLK1)					Prepared: 02/06/24 Analyzed: 02/06/24				
Diesel Range Organics (C10-C28)	ND	25.0							
Oil Range Organics (C28-C36)	ND	50.0							
Surrogate: n-Nonane	39.1		50.0		78.2	50-200			

LCS (2406042-BS1)					Prepared: 02/06/24 Analyzed: 02/06/24				
Diesel Range Organics (C10-C28)	235	25.0	250		94.1	38-132			
Surrogate: n-Nonane	38.6		50.0		77.2	50-200			

Matrix Spike (2406042-MS1)					Source: E402026-03		Prepared: 02/06/24 Analyzed: 02/06/24		
Diesel Range Organics (C10-C28)	244	25.0	250	ND	97.5	38-132			
Surrogate: n-Nonane	43.9		50.0		87.9	50-200			

Matrix Spike Dup (2406042-MSD1)					Source: E402026-03		Prepared: 02/06/24 Analyzed: 02/06/24		
Diesel Range Organics (C10-C28)	249	25.0	250	ND	99.6	38-132	2.06	20	
Surrogate: n-Nonane	41.4		50.0		82.8	50-200			



QC Summary Data

Matador Resources, LLC.	Project Name:	Uncle Don State TB	Reported:
5400 LBJ Freeway, Suite 1500	Project Number:	23052-0001	
Dallas TX, 75240	Project Manager:	Ashley Giovengo	2/8/2024 3:59:29PM

Anions by EPA 300.0/9056A

Analyst: IY

Analyte	Result	Reporting Limit	Spike Level	Source Result	Rec	Rec Limits	RPD	RPD Limit	Notes
	mg/kg	mg/kg	mg/kg	mg/kg	%	%	%	%	

Blank (2406001-BLK1)					Prepared: 02/04/24 Analyzed: 02/05/24				
Chloride	ND	20.0							
LCS (2406001-BS1)					Prepared: 02/04/24 Analyzed: 02/05/24				
Chloride	247	20.0	250		98.7	90-110			
LCS Dup (2406001-BSD1)					Prepared: 02/04/24 Analyzed: 02/05/24				
Chloride	245	20.0	250		98.1	90-110	0.575	20	

QC Summary Report Comment:
Calculations are based off of the raw (non-rounded) data. However, for reporting purposes all QC data is rounded to three significant figures.
Therefore, hand calculated values may differ slightly.



Definitions and Notes

Matador Resources, LLC.	Project Name:	Uncle Don State TB	
5400 LBJ Freeway, Suite 1500	Project Number:	23052-0001	Reported:
Dallas TX, 75240	Project Manager:	Ashley Giovengo	02/08/24 15:59

- S5 Surrogate spike recovery exceeded acceptance limits due to interfering target and/or non-target analytes.
- ND Analyte NOT DETECTED at or above the reporting limit
- NR Not Reported
- RPD Relative Percent Difference
- DNI Did Not Ignite
- DNR Did not react with the addition of acid or base.

Note (1): Methods marked with ** are non-accredited methods.

Note (2): Soil data is reported on an "as received" weight basis, unless reported otherwise.



Released to Imaging: 4/23/2024 2:57:42 PM

Received by OCD: 3/6/2024 3:01:44 PM

Client: Matador Production Company.					Bill To		Lab Use Only				TAT				EPA Program				
Project: Uncle Don State TB					Attention: Matador Production Company		Lab WO#		Job Number		1D	2D	3D	Standard	CWA	SDWA			
Project Manager: Ashley Giovengo					Address: on file		E 402026		23052-0001					X					
Address: 3122 National Parks Hwy					City, State, Zip:		Analysis and Method								RCRA				
City, State, Zip: Carlsbad NM, 88220					Phone: (337)319-8398		TPH GRO/DRO/ORO by 8015	BTEX by 8021	VOC by 8260	Metals 6010	Chloride 300.0	BGDOC NM	TX	GDOC	State				
Phone: 575-988-0055					Email: clinton.talley@matadorresources.com										NM	CO	UT	AZ	TX
Email: agiovengo@ensolum.com															Remarks				
Report due by:																			
Time Sampled	Date Sampled	Matrix	No. of Containers	Sample ID	Lab Number														
11:19	1/31/2024	S	1	BH01 - 0'	1							X							
12:00	1/31/2024	S	1	BH01 - 2'	2							X							
13:22	1/31/2024	S	1	BH01 - 4'	3							X							
13:26	1/31/2024	S	1	BH01 - 5'	4							X			Run only if BH01 - 4' does not pass 100 total TPH and 600 Chlorides				
9:58	1/31/2024	S	1	BH04 - 0'	5							X							
10:03	1/31/2024	S	1	BH04 - 0.5'	6							X							
10:05	1/31/2024	S	1	BH04 - 1'	7							X			Run only if BH04 - 0.5' does not pass 100 total TPH and 600 Chlorides				
Additional Instructions: Please CC: cburton@ensolum.com, agiovengo@ensolum.com, chadhamilton@ensolum.com, ehaft@ensolum.com, thillard@ensolum.com																			
I, (field sampler), attest to the validity and authenticity of this sample. I am aware that tampering with or intentionally mislabelling the sample location, date or time of collection is considered fraud and may be grounds for legal action.										Samples requiring thermal preservation must be received on ice the day they are sampled or received packed in ice at an avg temp above 0 but less than 6 °C on subsequent days.									
Sampled by: Chad Hamilton																			
Relinquished by: (Signature)		Date	Time	Received by: (Signature)		Date	Time	Lab Use Only											
		02/01/24				2-1-24	1047	Received on ice: Y N											
Relinquished by: (Signature)		Date	Time	Received by: (Signature)		Date	Time	T1 T2 T3											
		2-1-24	1630			2/1/24	1630												
Relinquished by: (Signature)		Date	Time	Received by: (Signature)		Date	Time	AVG Temp °C											
		2/1/24	2348			020224	0610	4											
Sample Matrix: S - Solid, Sg - Sludge, A - Aqueous, O - Other										Container Type: g - glass, p - poly/plastic, ag - amber glass, v - VOA									
Note: Samples are discarded 30 days after results are reported unless other arrangements are made. Hazardous samples will be returned to client or disposed of at the client expense. The report for the analysis of the above samples is applicable only to those samples received by the laboratory with this COC. The liability of the laboratory is limited to the amount paid for on the report.																			

Envirotech Analytical Laboratory

Printed: 2/2/2024 9:30:48AM

Sample Receipt Checklist (SRC)

Instructions: Please take note of any NO checkmarks.

If we receive no response concerning these items within 24 hours of the date of this notice, all the samples will be analyzed as requested.

Client: Matador Resources, LLC.
 Phone: (972) 371-5200
 Email: agiovngo@ensolum.com

Date Received: 02/02/24 06:10
 Date Logged In: 02/02/24 09:21
 Due Date: 02/08/24 17:00 (4 day TAT)

Work Order ID: E402026
 Logged In By: Jessica Liesse

Chain of Custody (COC)

1. Does the sample ID match the COC? Yes
2. Does the number of samples per sampling site location match the COC? Yes
3. Were samples dropped off by client or carrier? Yes
4. Was the COC complete, i.e., signatures, dates/times, requested analyses? Yes
5. Were all samples received within holding time? Yes

Carrier: Courier

Note: Analysis, such as pH which should be conducted in the field,
 i.e., 15 minute hold time, are not included in this discussion.

Sample Turn Around Time (TAT)

6. Did the COC indicate standard TAT, or Expedited TAT? Yes

Sample Cooler

7. Was a sample cooler received? Yes
8. If yes, was cooler received in good condition? Yes
9. Was the sample(s) received intact, i.e., not broken? Yes
10. Were custody/security seals present? No
11. If yes, were custody/security seals intact? NA
12. Was the sample received on ice? If yes, the recorded temp is 4°C, i.e., 6°±2°C Yes

Note: Thermal preservation is not required, if samples are received w/i 15
 minutes of sampling

13. If no visible ice, record the temperature. Actual sample temperature: 4°C

Sample Container

14. Are aqueous VOC samples present? No
15. Are VOC samples collected in VOA Vials? NA
16. Is the head space less than 6-8 mm (pea sized or less)? NA
17. Was a trip blank (TB) included for VOC analyses? NA
18. Are non-VOC samples collected in the correct containers? Yes
19. Is the appropriate volume/weight or number of sample containers collected? Yes

Field Label

20. Were field sample labels filled out with the minimum information:
 Sample ID? Yes
 Date/Time Collected? Yes
 Collectors name? No

Sample Preservation

21. Does the COC or field labels indicate the samples were preserved? No
22. Are sample(s) correctly preserved? NA
24. Is lab filtration required and/or requested for dissolved metals? No

Multiphase Sample Matrix

26. Does the sample have more than one phase, i.e., multiphase? No
27. If yes, does the COC specify which phase(s) is to be analyzed? NA

Subcontract Laboratory

28. Are samples required to get sent to a subcontract laboratory? No
29. Was a subcontract laboratory specified by the client and if so who? NA Subcontract Lab:

Client InstructionComments/Resolution

Signature of client authorizing changes to the COC or sample disposition.

Date



envirotech Inc.

Report to:

Ashley Giovengo



envirotech

Practical Solutions for a Better Tomorrow

Analytical Report

Matador Resources, LLC.

Project Name: Uncle Don State TB

Work Order: E402045

Job Number: 23052-0001

Received: 2/3/2024

Revision: 1

Report Reviewed By:

Walter Hinchman
Laboratory Director
2/8/24

5796 U.S. Hwy 64
Farmington, NM 87401

Phone: (505) 632-1881
Envirotech-inc.com



Envirotech Inc. certifies the test results meet all requirements of TNI unless noted otherwise.
Statement of Data Authenticity: Envirotech Inc. attests the data reported has not been altered in any way.
Partial or incomplete reproduction of this report is prohibited, unless approved by Envirotech Inc.
Envirotech Inc. holds the Utah TNI certification NM00979 for data reported.
Envirotech Inc. holds the Texas TNI certification T104704557 for data reported.

Date Reported: 2/8/24

Ashley Giovengo
5400 LBJ Freeway, Suite 1500
Dallas, TX 75240



Project Name: Uncle Don State TB
Workorder: E402045
Date Received: 2/3/2024 2:50:00PM

Ashley Giovengo,

Thank you for choosing Envirotech, Inc. as your analytical testing laboratory for the sample(s) received on, 2/3/2024 2:50:00PM, under the Project Name: Uncle Don State TB.

The analytical test results summarized in this report with the Project Name: Uncle Don State TB apply to the individual samples collected, identified and submitted bearing the project name on the enclosed chain-of-custody. Subcontracted sample analyses not conducted by Envirotech, Inc., are attached in full as issued by the subcontract laboratory.

Please review the Chain-of-Custody (COC) and Sample Receipt Checklist (SRC) for any issues regarding sample receipt temperature, containers, preservation etc. To best understand your test results, review the entire report summarizing your sample data and the associated quality control batch data.

All reported data in this analytical report were analyzed according to the referenced method(s) and are in compliance with the latest NELAC/TNI standards, unless otherwise noted. Samples or analytical quality control parameters not meeting specific QC criteria are qualified with a data flag. Data flag definitions are located in the Notes and Definitions section of this analytical report.

If you have any questions concerning this report, please feel free to contact Envirotech, Inc.

Respectfully,

Walter Hinchman
Laboratory Director
Office: 505-632-1881
Cell: 775-287-1762
whinchman@envirotech-inc.com

Raina Schwanz
Laboratory Administrator
Office: 505-632-1881
rainaschwanz@envirotech-inc.com

Alexa Michaels
Sample Custody Officer
Office: 505-632-1881
labadmin@envirotech-inc.com

Field Offices:

Southern New Mexico Area

Lynn Jarboe
Laboratory Technical Representative
Office: 505-421-LABS(5227)
Cell: 505-320-4759
ljjarboe@envirotech-inc.com

Michelle Golzaes
Client Representative
Office: 505-421-LABS(5227)
Cell: 505-947-8222
mgonzales@envirotech-inc.com

Envirotech Web Address: www.envirotech-inc.com

Table of Contents

Title Page	1
Cover Page	2
Table of Contents	3
Sample Summary	4
Sample Data	5
BH02-0'	5
BH02-2'	6
BH03-0'	7
BH03-1'	8
QC Summary Data	9
QC - Volatile Organics by EPA 8021B	9
QC - Nonhalogenated Organics by EPA 8015D - GRO	10
QC - Nonhalogenated Organics by EPA 8015D - DRO/ORO	11
QC - Anions by EPA 300.0/9056A	12
Definitions and Notes	13
Chain of Custody etc.	14

Sample Summary

Matador Resources, LLC. 5400 LBJ Freeway, Suite 1500 Dallas TX, 75240	Project Name: Uncle Don State TB Project Number: 23052-0001 Project Manager: Ashley Giovengo	Reported: 02/08/24 09:55
---	--	-----------------------------

Client Sample ID	Lab Sample ID	Matrix	Sampled	Received	Container
BH02-0'	E402045-01A	Soil	02/01/24	02/03/24	Glass Jar, 2 oz.
BH02-2'	E402045-02A	Soil	02/01/24	02/03/24	Glass Jar, 2 oz.
BH03-0'	E402045-03A	Soil	02/01/24	02/03/24	Glass Jar, 2 oz.
BH03-1'	E402045-04A	Soil	02/01/24	02/03/24	Glass Jar, 2 oz.



Sample Data

Matador Resources, LLC. 5400 LBJ Freeway, Suite 1500 Dallas TX, 75240	Project Name: Uncle Don State TB Project Number: 23052-0001 Project Manager: Ashley Giovengo	Reported: 2/8/2024 9:55:00AM
---	--	---------------------------------

BH02-0'

E402045-01

Analyte	Result	Reporting Limit	Dilution	Prepared	Analyzed	Notes
Volatile Organics by EPA 8021B	mg/kg	mg/kg	Analyst: RAS		Batch: 2405155	
Benzene	16.7	0.500	20	02/02/24	02/05/24	
Ethylbenzene	104	0.500	20	02/02/24	02/05/24	
Toluene	293	0.500	20	02/02/24	02/05/24	
o-Xylene	70.2	0.500	20	02/02/24	02/05/24	
p,m-Xylene	190	1.00	20	02/02/24	02/05/24	
Total Xylenes	260	0.500	20	02/02/24	02/05/24	
Surrogate: 4-Bromochlorobenzene-PID	96.9 %	70-130		02/02/24	02/05/24	
Nonhalogenated Organics by EPA 8015D - GRO	mg/kg	mg/kg	Analyst: RAS		Batch: 2405155	
Gasoline Range Organics (C6-C10)	2510	400	20	02/02/24	02/05/24	
Surrogate: 1-Chloro-4-fluorobenzene-FID	96.8 %	70-130		02/02/24	02/05/24	
Nonhalogenated Organics by EPA 8015D - DRO/ORO	mg/kg	mg/kg	Analyst: KM		Batch: 2406042	
Diesel Range Organics (C10-C28)	18700	1250	50	02/06/24	02/07/24	
Oil Range Organics (C28-C36)	4680	2500	50	02/06/24	02/07/24	
Surrogate: n-Nonane	818 %	50-200		02/06/24	02/07/24	SS
Anions by EPA 300.0/9056A	mg/kg	mg/kg	Analyst: IY		Batch: 2406019	
Chloride	165	20.0	1	02/05/24	02/06/24	

Sample Data

Matador Resources, LLC.
5400 LBJ Freeway, Suite 1500
Dallas TX, 75240

Project Name: Uncle Don State TB
Project Number: 23052-0001
Project Manager: Ashley Giovengo

Reported:
2/8/2024 9:55:00AM

BH02-2'

E402045-02

Analyte	Result	Reporting Limit	Dilution	Prepared	Analyzed	Notes
Volatile Organics by EPA 8021B	mg/kg	mg/kg	Analyst: RAS		Batch: 2405155	
Benzene	ND	0.0250	1	02/02/24	02/06/24	
Ethylbenzene	ND	0.0250	1	02/02/24	02/06/24	
Toluene	ND	0.0250	1	02/02/24	02/06/24	
o-Xylene	ND	0.0250	1	02/02/24	02/06/24	
p,m-Xylene	ND	0.0500	1	02/02/24	02/06/24	
Total Xylenes	ND	0.0250	1	02/02/24	02/06/24	
<i>Surrogate: 4-Bromochlorobenzene-PID</i>						
	95.9 %	70-130		02/02/24	02/06/24	
Nonhalogenated Organics by EPA 8015D - GRO	mg/kg	mg/kg	Analyst: RAS		Batch: 2405155	
Gasoline Range Organics (C6-C10)	ND	20.0	1	02/02/24	02/05/24	
<i>Surrogate: 1-Chloro-4-fluorobenzene-FID</i>						
	95.4 %	70-130		02/02/24	02/05/24	
Nonhalogenated Organics by EPA 8015D - DRO/ORO	mg/kg	mg/kg	Analyst: KM		Batch: 2406042	
Diesel Range Organics (C10-C28)	ND	25.0	1	02/06/24	02/07/24	
Oil Range Organics (C28-C36)	ND	50.0	1	02/06/24	02/07/24	
<i>Surrogate: n-Nonane</i>						
	82.7 %	50-200		02/06/24	02/07/24	
Anions by EPA 300.0/9056A	mg/kg	mg/kg	Analyst: IY		Batch: 2406019	
Chloride	32.3	20.0	1	02/05/24	02/06/24	



Sample Data

Matador Resources, LLC. 5400 LBJ Freeway, Suite 1500 Dallas TX, 75240	Project Name: Uncle Don State TB Project Number: 23052-0001 Project Manager: Ashley Giovengo	Reported: 2/8/2024 9:55:00AM
---	--	---------------------------------

BH03-0'

E402045-03

Analyte	Result	Reporting Limit	Dilution	Prepared	Analyzed	Notes
Volatile Organics by EPA 8021B	mg/kg	mg/kg	Analyst: RAS		Batch: 2405155	
Benzene	18.5	0.500	20	02/02/24	02/05/24	
Ethylbenzene	130	0.500	20	02/02/24	02/05/24	
Toluene	351	0.500	20	02/02/24	02/05/24	
o-Xylene	86.6	0.500	20	02/02/24	02/05/24	
p,m-Xylene	235	1.00	20	02/02/24	02/05/24	
Total Xylenes	322	0.500	20	02/02/24	02/05/24	
Surrogate: 4-Bromochlorobenzene-PID	97.1 %	70-130		02/02/24	02/05/24	
Nonhalogenated Organics by EPA 8015D - GRO	mg/kg	mg/kg	Analyst: RAS		Batch: 2405155	
Gasoline Range Organics (C6-C10)	3050	400	20	02/02/24	02/05/24	
Surrogate: 1-Chloro-4-fluorobenzene-FID	98.2 %	70-130		02/02/24	02/05/24	
Nonhalogenated Organics by EPA 8015D - DRO/ORO	mg/kg	mg/kg	Analyst: KM		Batch: 2406042	
Diesel Range Organics (C10-C28)	20400	1250	50	02/06/24	02/07/24	
Oil Range Organics (C28-C36)	5940	2500	50	02/06/24	02/07/24	
Surrogate: n-Nonane	908 %	50-200		02/06/24	02/07/24	S5
Anions by EPA 300.0/9056A	mg/kg	mg/kg	Analyst: IY		Batch: 2406019	
Chloride	99.5	20.0	1	02/05/24	02/06/24	



Sample Data

Matador Resources, LLC. 5400 LBJ Freeway, Suite 1500 Dallas TX, 75240	Project Name: Uncle Don State TB Project Number: 23052-0001 Project Manager: Ashley Giovengo	Reported: 2/8/2024 9:55:00AM
---	--	---------------------------------

BH03-1'

E402045-04

Analyte	Result	Reporting Limit	Dilution	Prepared	Analyzed	Notes
Volatile Organics by EPA 8021B	mg/kg	mg/kg	Analyst: RAS		Batch: 2405155	
Benzene	ND	0.125	5	02/02/24	02/06/24	
Ethylbenzene	7.24	0.125	5	02/02/24	02/06/24	
Toluene	6.39	0.125	5	02/02/24	02/06/24	
o-Xylene	6.56	0.125	5	02/02/24	02/06/24	
p,m-Xylene	16.4	0.250	5	02/02/24	02/06/24	
Total Xylenes	23.0	0.125	5	02/02/24	02/06/24	
Surrogate: 4-Bromochlorobenzene-PID	99.5 %	70-130		02/02/24	02/06/24	
Nonhalogenated Organics by EPA 8015D - GRO	mg/kg	mg/kg	Analyst: RAS		Batch: 2405155	
Gasoline Range Organics (C6-C10)	215	100	5	02/02/24	02/06/24	
Surrogate: 1-Chloro-4-fluorobenzene-FID	100 %	70-130		02/02/24	02/06/24	
Nonhalogenated Organics by EPA 8015D - DRO/ORO	mg/kg	mg/kg	Analyst: KM		Batch: 2406042	
Diesel Range Organics (C10-C28)	1280	125	5	02/06/24	02/07/24	
Oil Range Organics (C28-C36)	318	250	5	02/06/24	02/07/24	
Surrogate: n-Nonane	110 %	50-200		02/06/24	02/07/24	
Anions by EPA 300.0/9056A	mg/kg	mg/kg	Analyst: IY		Batch: 2406019	
Chloride	56.1	20.0	1	02/05/24	02/07/24	



QC Summary Data

Matador Resources, LLC.	Project Name:	Uncle Don State TB	Reported:
5400 LBJ Freeway, Suite 1500	Project Number:	23052-0001	
Dallas TX, 75240	Project Manager:	Ashley Giovengo	2/8/2024 9:55:00AM

Volatile Organics by EPA 8021B

Analyst: RAS

Analyte	Result mg/kg	Reporting Limit mg/kg	Spike Level mg/kg	Source Result mg/kg	Rec %	Rec Limits %	RPD %	RPD Limit %	Notes
---------	-----------------	-----------------------------	-------------------------	---------------------------	----------	--------------------	----------	-------------------	-------

Blank (2405155-BLK1)

Prepared: 02/02/24 Analyzed: 02/04/24

Benzene	ND	0.0250							
Ethylbenzene	ND	0.0250							
Toluene	ND	0.0250							
o-Xylene	ND	0.0250							
p,m-Xylene	ND	0.0500							
Total Xylenes	ND	0.0250							
Surrogate: 4-Bromochlorobenzene-PID	7.56		8.00		94.4	70-130			

LCS (2405155-BS1)

Prepared: 02/02/24 Analyzed: 02/05/24

Benzene	4.86	0.0250	5.00		97.1	70-130			
Ethylbenzene	4.82	0.0250	5.00		96.3	70-130			
Toluene	4.83	0.0250	5.00		96.6	70-130			
o-Xylene	4.78	0.0250	5.00		95.6	70-130			
p,m-Xylene	9.71	0.0500	10.0		97.1	70-130			
Total Xylenes	14.5	0.0250	15.0		96.6	70-130			
Surrogate: 4-Bromochlorobenzene-PID	7.57		8.00		94.6	70-130			

LCS Dup (2405155-BSD1)

Prepared: 02/02/24 Analyzed: 02/05/24

Benzene	4.73	0.0250	5.00		94.6	70-130	2.69	20	
Ethylbenzene	4.69	0.0250	5.00		93.8	70-130	2.62	20	
Toluene	4.70	0.0250	5.00		94.0	70-130	2.74	20	
o-Xylene	4.65	0.0250	5.00		93.1	70-130	2.69	20	
p,m-Xylene	9.48	0.0500	10.0		94.8	70-130	2.41	20	
Total Xylenes	14.1	0.0250	15.0		94.2	70-130	2.50	20	
Surrogate: 4-Bromochlorobenzene-PID	7.57		8.00		94.6	70-130			



QC Summary Data

Matador Resources, LLC.	Project Name:	Uncle Don State TB	Reported:
5400 LBJ Freeway, Suite 1500	Project Number:	23052-0001	
Dallas TX, 75240	Project Manager:	Ashley Giovengo	2/8/2024 9:55:00AM

Nonhalogenated Organics by EPA 8015D - GRO

Analyst: RAS

Analyte	Result mg/kg	Reporting Limit mg/kg	Spike Level mg/kg	Source Result mg/kg	Rec %	Rec Limits %	RPD %	RPD Limit %	Notes
---------	-----------------	-----------------------------	-------------------------	---------------------------	----------	--------------------	----------	-------------------	-------

Blank (2405155-BLK1) Prepared: 02/02/24 Analyzed: 02/04/24

Gasoline Range Organics (C6-C10)	ND	20.0							
Surrogate: 1-Chloro-4-fluorobenzene-FID	7.50		8.00		93.7	70-130			

LCS (2405155-BS2) Prepared: 02/02/24 Analyzed: 02/05/24

Gasoline Range Organics (C6-C10)	46.4	20.0	50.0		92.8	70-130			
Surrogate: 1-Chloro-4-fluorobenzene-FID	7.84		8.00		98.0	70-130			

LCS Dup (2405155-BSD2) Prepared: 02/02/24 Analyzed: 02/05/24

Gasoline Range Organics (C6-C10)	48.9	20.0	50.0		97.7	70-130	5.18	20	
Surrogate: 1-Chloro-4-fluorobenzene-FID	7.60		8.00		95.0	70-130			



QC Summary Data

Matador Resources, LLC.	Project Name:	Uncle Don State TB	Reported:
5400 LBJ Freeway, Suite 1500	Project Number:	23052-0001	
Dallas TX, 75240	Project Manager:	Ashley Giovengo	2/8/2024 9:55:00AM

Nonhalogenated Organics by EPA 8015D - DRO/ORO

Analyst: KM

Analyte	Result mg/kg	Reporting Limit mg/kg	Spike Level mg/kg	Source Result mg/kg	Rec %	Rec Limits %	RPD %	RPD Limit %	Notes
---------	-----------------	-----------------------------	-------------------------	---------------------------	----------	--------------------	----------	-------------------	-------

Blank (2406042-BLK1)					Prepared: 02/06/24 Analyzed: 02/06/24				
Diesel Range Organics (C10-C28)	ND	25.0							
Oil Range Organics (C28-C36)	ND	50.0							
Surrogate: n-Nonane	39.1		50.0		78.2	50-200			

LCS (2406042-BS1)					Prepared: 02/06/24 Analyzed: 02/06/24				
Diesel Range Organics (C10-C28)	235	25.0	250		94.1	38-132			
Surrogate: n-Nonane	38.6		50.0		77.2	50-200			

Matrix Spike (2406042-MS1)					Source: E402026-03		Prepared: 02/06/24 Analyzed: 02/06/24		
Diesel Range Organics (C10-C28)	244	25.0	250	ND	97.5	38-132			
Surrogate: n-Nonane	43.9		50.0		87.9	50-200			

Matrix Spike Dup (2406042-MSD1)					Source: E402026-03		Prepared: 02/06/24 Analyzed: 02/06/24		
Diesel Range Organics (C10-C28)	249	25.0	250	ND	99.6	38-132	2.06	20	
Surrogate: n-Nonane	41.4		50.0		82.8	50-200			



QC Summary Data

Matador Resources, LLC.	Project Name:	Uncle Don State TB	Reported:
5400 LBJ Freeway, Suite 1500	Project Number:	23052-0001	
Dallas TX, 75240	Project Manager:	Ashley Giovengo	2/8/2024 9:55:00AM

Anions by EPA 300.0/9056A

Analyst: IY

Analyte	Result	Reporting Limit	Spike Level	Source Result	Rec	Rec Limits	RPD	RPD Limit	Notes
	mg/kg	mg/kg	mg/kg	mg/kg	%	%	%	%	

Blank (2406019-BLK1)					Prepared: 02/05/24 Analyzed: 02/06/24				
Chloride	ND	20.0							
LCS (2406019-BS1)					Prepared: 02/05/24 Analyzed: 02/06/24				
Chloride	255	20.0	250		102	90-110			
LCS Dup (2406019-BSD1)					Prepared: 02/05/24 Analyzed: 02/06/24				
Chloride	255	20.0	250		102	90-110	0.300	20	

QC Summary Report Comment:
Calculations are based off of the raw (non-rounded) data. However, for reporting purposes all QC data is rounded to three significant figures.
Therefore, hand calculated values may differ slightly.



Definitions and Notes

Matador Resources, LLC.	Project Name:	Uncle Don State TB	
5400 LBJ Freeway, Suite 1500	Project Number:	23052-0001	Reported:
Dallas TX, 75240	Project Manager:	Ashley Giovengo	02/08/24 09:55

- S5 Surrogate spike recovery exceeded acceptance limits due to interfering target and/or non-target analytes.
- ND Analyte NOT DETECTED at or above the reporting limit
- NR Not Reported
- RPD Relative Percent Difference
- DNI Did Not Ignite
- DNR Did not react with the addition of acid or base.

Note (1): Methods marked with ** are non-accredited methods.

Note (2): Soil data is reported on an "as received" weight basis, unless reported otherwise.



Client: Matador Production Company.					Bill To Attention: Matador Production Company Address: on file City, State, Zip: Phone: (337)319-8398 Email: clinton.talley@matadorresources.com		Lab Use Only						TAT				EPA Program				
Project: Uncle Don State TB							Lab WO#	Job Number					1D	2D	3D	Standard	CWA	SDWA			
Project Manager: Ashley Gioengo							E402045 23052000								X						
Address: 3122 National Parks Hwy							Analysis and Method												RCRA		
City, State, Zip: Carlsbad NM, 88220							TPH GRO/DRO/ORO by 8015	BTEX by 8021	VOC by 8260	Metals 6010	Chloride 300.0				BGDOC NM	GDOC TX					
Phone: 575-988-0055															State						
Email: agioengo@ensolum.com															NM	CO	UT	AZ	TX		
Report due by:															X						
Time Sampled	Date Sampled	Matrix	No. of Containers	Sample ID	Lab Number													Remarks			
9:04	2/1/2024	S	1	BH02 - 0'	1									X							
9:18	2/1/2024	S	1	BH02 - 2'	2									X							
10:49	2/1/2024	S	1	BH03 - 0'	3									X							
11:01	2/1/2024	S	1	BH03 - 1'	4									X							
Additional Instructions: Please CC: cburton@ensolum.com, agioengo@ensolum.com, chadhmilton@ensolum.com, ehaf@ensolum.com, thillard@ensolum.com																					
I, (field sampler), attest to the validity and authenticity of this sample. I am aware that tampering with or intentionally mislabelling the sample location, date or time of collection is considered fraud and may be grounds for legal action.												Samples requiring thermal preservation must be received on ice the day they are sampled or received packed in ice at an avg temp above 0 but less than 6 °C on subsequent days.									
Relinquished by: (Signature)		Date	Time	Received by: (Signature)		Date	Time	Lab Use Only													
		2/1/24	1126			2-2-24	1126	Received on ice: <input checked="" type="radio"/> Y <input type="radio"/> N													
Relinquished by: (Signature)		Date	Time	Received by: (Signature)		Date	Time	T1 T2 T3													
		2-3-24	1400			2/3/24	1450														
Relinquished by: (Signature)		Date	Time	Received by: (Signature)		Date	Time	AVG Temp °C 4													
Sample Matrix: S - Soil, Sd - Solid, Sg - Sludge, A - Aqueous, O - Other												Container Type: g - glass, p - poly/plastic, ag - amber glass, v - VOA									
Note: Samples are discarded 30 days after results are reported unless other arrangements are made. Hazardous samples will be returned to client or disposed of at the client expense. The report for the analysis of the above samples is applicable only to those samples received by the laboratory with this COC. The liability of the laboratory is limited to the amount paid for on the report.																					



Envirotech Analytical Laboratory

Printed: 2/4/2024 3:46:49PM

Sample Receipt Checklist (SRC)

Instructions: Please take note of any NO checkmarks.

If we receive no response concerning these items within 24 hours of the date of this notice, all the samples will be analyzed as requested.

Client:	Matador Resources, LLC.	Date Received:	02/03/24 14:50	Work Order ID:	E402045
Phone:	(972) 371-5200	Date Logged In:	02/02/24 17:37	Logged In By:	Alexa Michaels
Email:	agiovngo@ensolum.com	Due Date:	02/09/24 17:00 (4 day TAT)		

Chain of Custody (COC)

1. Does the sample ID match the COC? Yes
2. Does the number of samples per sampling site location match the COC? Yes
3. Were samples dropped off by client or carrier? Yes
4. Was the COC complete, i.e., signatures, dates/times, requested analyses? Yes
5. Were all samples received within holding time? Yes

Note: Analysis, such as pH which should be conducted in the field, i.e., 15 minute hold time, are not included in this discussion.

Carrier: Courier**Comments/Resolution****Sample Turn Around Time (TAT)**

6. Did the COC indicate standard TAT, or Expedited TAT? Yes

Sample Cooler

7. Was a sample cooler received? Yes
8. If yes, was cooler received in good condition? Yes
9. Was the sample(s) received intact, i.e., not broken? Yes
10. Were custody/security seals present? No
11. If yes, were custody/security seals intact? NA
12. Was the sample received on ice? If yes, the recorded temp is 4°C, i.e., 6°±2°C? Yes

Note: Thermal preservation is not required, if samples are received w/i 15 minutes of sampling

13. If no visible ice, record the temperature. Actual sample temperature: 4°C

Sample Container

14. Are aqueous VOC samples present? No
15. Are VOC samples collected in VOA Vials? NA
16. Is the head space less than 6-8 mm (pea sized or less)? NA
17. Was a trip blank (TB) included for VOC analyses? NA
18. Are non-VOC samples collected in the correct containers? Yes
19. Is the appropriate volume/weight or number of sample containers collected? Yes

Field Label

20. Were field sample labels filled out with the minimum information:
Sample ID? Yes
Date/Time Collected? Yes
Collectors name? Yes

Sample Preservation

21. Does the COC or field labels indicate the samples were preserved? No
22. Are sample(s) correctly preserved? NA
24. Is lab filtration required and/or requested for dissolved metals? No

Multiphase Sample Matrix

26. Does the sample have more than one phase, i.e., multiphase? No
27. If yes, does the COC specify which phase(s) is to be analyzed? NA

Subcontract Laboratory

28. Are samples required to get sent to a subcontract laboratory? No
29. Was a subcontract laboratory specified by the client and if so who? NA Subcontract Lab: NA

Client Instruction

Signature of client authorizing changes to the COC or sample disposition.

Date



envirotech Inc.

Report to:
Ashley Giovengo



envirotech

Practical Solutions for a Better Tomorrow

Analytical Report

Matador Resources, LLC.

Project Name: Uncle Don State TB

Work Order: E402096

Job Number: 23052-0001

Received: 2/12/2024

Revision: 1

Report Reviewed By:

Walter Hinchman
Laboratory Director
2/16/24

5796 U.S. Hwy 64
Farmington, NM 87401

Phone: (505) 632-1881
Envirotech-inc.com



Envirotech Inc. certifies the test results meet all requirements of TNI unless noted otherwise.
Statement of Data Authenticity: Envirotech Inc. attests the data reported has not been altered in any way.
Partial or incomplete reproduction of this report is prohibited, unless approved by Envirotech Inc.
Envirotech Inc. holds the Utah TNI certification NM00979 for data reported.
Envirotech Inc. holds the Texas TNI certification T104704557 for data reported.

Date Reported: 2/16/24

Ashley Giovengo
5400 LBJ Freeway, Suite 1500
Dallas, TX 75240



Project Name: Uncle Don State TB
Workorder: E402096
Date Received: 2/12/2024 8:00:00AM

Ashley Giovengo,

Thank you for choosing Envirotech, Inc. as your analytical testing laboratory for the sample(s) received on, 2/12/2024 8:00:00AM, under the Project Name: Uncle Don State TB.

The analytical test results summarized in this report with the Project Name: Uncle Don State TB apply to the individual samples collected, identified and submitted bearing the project name on the enclosed chain-of-custody. Subcontracted sample analyses not conducted by Envirotech, Inc., are attached in full as issued by the subcontract laboratory.

Please review the Chain-of-Custody (COC) and Sample Receipt Checklist (SRC) for any issues regarding sample receipt temperature, containers, preservation etc. To best understand your test results, review the entire report summarizing your sample data and the associated quality control batch data.

All reported data in this analytical report were analyzed according to the referenced method(s) and are in compliance with the latest NELAC/TNI standards, unless otherwise noted. Samples or analytical quality control parameters not meeting specific QC criteria are qualified with a data flag. Data flag definitions are located in the Notes and Definitions section of this analytical report.

If you have any questions concerning this report, please feel free to contact Envirotech, Inc.

Respectfully,

Walter Hinchman
Laboratory Director
Office: 505-632-1881
Cell: 775-287-1762
whinchman@envirotech-inc.com

Raina Schwanz
Laboratory Administrator
Office: 505-632-1881
rainaschwanz@envirotech-inc.com

Alexa Michaels
Sample Custody Officer
Office: 505-632-1881
labadmin@envirotech-inc.com

Field Offices:

Southern New Mexico Area

Lynn Jarboe
Laboratory Technical Representative
Office: 505-421-LABS(5227)
Cell: 505-320-4759
ljjarboe@envirotech-inc.com

Michelle Golzaes
Client Representative
Office: 505-421-LABS(5227)
Cell: 505-947-8222
mgonzales@envirotech-inc.com

Envirotech Web Address: www.envirotech-inc.com

Table of Contents

Title Page	1
Cover Page	2
Table of Contents	3
Sample Summary	4
Sample Data	5
FSO1 - .5'	5
FSO2 - .5'	6
FSO3 - .5'	7
FSO4 - .5'	8
QC Summary Data	9
QC - Volatile Organic Compounds by EPA 8260B	9
QC - Nonhalogenated Organics by EPA 8015D - GRO	10
QC - Nonhalogenated Organics by EPA 8015D - DRO/ORO	11
QC - Anions by EPA 300.0/9056A	12
Definitions and Notes	13
Chain of Custody etc.	14

Sample Summary

Matador Resources, LLC. 5400 LBJ Freeway, Suite 1500 Dallas TX, 75240	Project Name: Uncle Don State TB Project Number: 23052-0001 Project Manager: Ashley Giovengo	Reported: 02/16/24 08:20
---	--	-----------------------------

Client Sample ID	Lab Sample ID	Matrix	Sampled	Received	Container
FSO1 - .5'	E402096-01A	Soil	02/08/24	02/12/24	Glass Jar, 2 oz.
FSO2 - .5'	E402096-02A	Soil	02/08/24	02/12/24	Glass Jar, 2 oz.
FSO3 - .5'	E402096-03A	Soil	02/08/24	02/12/24	Glass Jar, 2 oz.
FSO4 - .5'	E402096-04A	Soil	02/08/24	02/12/24	Glass Jar, 2 oz.



Sample Data

Matador Resources, LLC. 5400 LBJ Freeway, Suite 1500 Dallas TX, 75240	Project Name: Uncle Don State TB Project Number: 23052-0001 Project Manager: Ashley Giovengo	Reported: 2/16/2024 8:20:27AM
---	--	----------------------------------

FSO1 - .5'

E402096-01

Analyte	Result	Reporting Limit	Dilution	Prepared	Analyzed	Notes
Volatile Organic Compounds by EPA 8260B	mg/kg	mg/kg	Analyst: RKS		Batch: 2407014	
Benzene	ND	0.0250	1	02/12/24	02/14/24	
Ethylbenzene	ND	0.0250	1	02/12/24	02/14/24	
Toluene	ND	0.0250	1	02/12/24	02/14/24	
o-Xylene	ND	0.0250	1	02/12/24	02/14/24	
p,m-Xylene	ND	0.0500	1	02/12/24	02/14/24	
Total Xylenes	ND	0.0250	1	02/12/24	02/14/24	
Surrogate: Bromofluorobenzene		103 %	70-130	02/12/24	02/14/24	
Surrogate: 1,2-Dichloroethane-d4		103 %	70-130	02/12/24	02/14/24	
Surrogate: Toluene-d8		90.4 %	70-130	02/12/24	02/14/24	
Nonhalogenated Organics by EPA 8015D - GRO	mg/kg	mg/kg	Analyst: RKS		Batch: 2407014	
Gasoline Range Organics (C6-C10)	ND	20.0	1	02/12/24	02/14/24	
Surrogate: Bromofluorobenzene		103 %	70-130	02/12/24	02/14/24	
Surrogate: 1,2-Dichloroethane-d4		103 %	70-130	02/12/24	02/14/24	
Surrogate: Toluene-d8		90.4 %	70-130	02/12/24	02/14/24	
Nonhalogenated Organics by EPA 8015D - DRO/ORO	mg/kg	mg/kg	Analyst: NV		Batch: 2407030	
Diesel Range Organics (C10-C28)	ND	25.0	1	02/13/24	02/13/24	
Oil Range Organics (C28-C36)	ND	50.0	1	02/13/24	02/13/24	
Surrogate: n-Nonane		110 %	50-200	02/13/24	02/13/24	
Anions by EPA 300.0/9056A	mg/kg	mg/kg	Analyst: DT		Batch: 2407012	
Chloride	84.9	20.0	1	02/12/24	02/13/24	



Sample Data

Matador Resources, LLC.
5400 LBJ Freeway, Suite 1500
Dallas TX, 75240

Project Name: Uncle Don State TB
Project Number: 23052-0001
Project Manager: Ashley Giovengo

Reported:
2/16/2024 8:20:27AM

FSO2 - .5'

E402096-02

Analyte	Result	Reporting Limit	Dilution	Prepared	Analyzed	Notes
Volatile Organic Compounds by EPA 8260B						
	mg/kg	mg/kg		Analyst: RKS		Batch: 2407014
Benzene	ND	0.0250	1	02/12/24	02/14/24	
Ethylbenzene	ND	0.0250	1	02/12/24	02/14/24	
Toluene	ND	0.0250	1	02/12/24	02/14/24	
o-Xylene	ND	0.0250	1	02/12/24	02/14/24	
p,m-Xylene	ND	0.0500	1	02/12/24	02/14/24	
Total Xylenes	ND	0.0250	1	02/12/24	02/14/24	
Surrogate: Bromofluorobenzene		104 %	70-130	02/12/24	02/14/24	
Surrogate: 1,2-Dichloroethane-d4		101 %	70-130	02/12/24	02/14/24	
Surrogate: Toluene-d8		92.7 %	70-130	02/12/24	02/14/24	
Nonhalogenated Organics by EPA 8015D - GRO						
	mg/kg	mg/kg		Analyst: RKS		Batch: 2407014
Gasoline Range Organics (C6-C10)	ND	20.0	1	02/12/24	02/14/24	
Surrogate: Bromofluorobenzene		104 %	70-130	02/12/24	02/14/24	
Surrogate: 1,2-Dichloroethane-d4		101 %	70-130	02/12/24	02/14/24	
Surrogate: Toluene-d8		92.7 %	70-130	02/12/24	02/14/24	
Nonhalogenated Organics by EPA 8015D - DRO/ORO						
	mg/kg	mg/kg		Analyst: NV		Batch: 2407030
Diesel Range Organics (C10-C28)	ND	25.0	1	02/13/24	02/13/24	
Oil Range Organics (C28-C36)	ND	50.0	1	02/13/24	02/13/24	
Surrogate: n-Nonane		104 %	50-200	02/13/24	02/13/24	
Anions by EPA 300.0/9056A						
	mg/kg	mg/kg		Analyst: DT		Batch: 2407012
Chloride	306	20.0	1	02/12/24	02/13/24	



Sample Data

Matador Resources, LLC.
5400 LBJ Freeway, Suite 1500
Dallas TX, 75240

Project Name: Uncle Don State TB
Project Number: 23052-0001
Project Manager: Ashley Giovengo

Reported:
2/16/2024 8:20:27AM

FSO3 - .5'

E402096-03

Analyte	Result	Reporting Limit	Dilution	Prepared	Analyzed	Notes
Volatile Organic Compounds by EPA 8260B						
	mg/kg	mg/kg		Analyst: RKS		Batch: 2407014
Benzene	ND	0.0250	1	02/12/24	02/14/24	
Ethylbenzene	ND	0.0250	1	02/12/24	02/14/24	
Toluene	ND	0.0250	1	02/12/24	02/14/24	
o-Xylene	ND	0.0250	1	02/12/24	02/14/24	
p,m-Xylene	ND	0.0500	1	02/12/24	02/14/24	
Total Xylenes	ND	0.0250	1	02/12/24	02/14/24	
Surrogate: Bromofluorobenzene		103 %	70-130	02/12/24	02/14/24	
Surrogate: 1,2-Dichloroethane-d4		101 %	70-130	02/12/24	02/14/24	
Surrogate: Toluene-d8		92.1 %	70-130	02/12/24	02/14/24	
Nonhalogenated Organics by EPA 8015D - GRO						
	mg/kg	mg/kg		Analyst: RKS		Batch: 2407014
Gasoline Range Organics (C6-C10)	ND	20.0	1	02/12/24	02/14/24	
Surrogate: Bromofluorobenzene		103 %	70-130	02/12/24	02/14/24	
Surrogate: 1,2-Dichloroethane-d4		101 %	70-130	02/12/24	02/14/24	
Surrogate: Toluene-d8		92.1 %	70-130	02/12/24	02/14/24	
Nonhalogenated Organics by EPA 8015D - DRO/ORO						
	mg/kg	mg/kg		Analyst: NV		Batch: 2407030
Diesel Range Organics (C10-C28)	ND	25.0	1	02/13/24	02/13/24	
Oil Range Organics (C28-C36)	ND	50.0	1	02/13/24	02/13/24	
Surrogate: n-Nonane		95.1 %	50-200	02/13/24	02/13/24	
Anions by EPA 300.0/9056A						
	mg/kg	mg/kg		Analyst: DT		Batch: 2407012
Chloride	118	20.0	1	02/12/24	02/13/24	



Sample Data

Matador Resources, LLC.
5400 LBJ Freeway, Suite 1500
Dallas TX, 75240

Project Name: Uncle Don State TB
Project Number: 23052-0001
Project Manager: Ashley Giovengo

Reported:
2/16/2024 8:20:27AM

FSO4 - .5'

E402096-04

Analyte	Result	Reporting Limit	Dilution	Prepared	Analyzed	Notes
Volatile Organic Compounds by EPA 8260B						
	mg/kg	mg/kg		Analyst: RKS		Batch: 2407014
Benzene	ND	0.0250	1	02/12/24	02/13/24	
Ethylbenzene	ND	0.0250	1	02/12/24	02/13/24	
Toluene	ND	0.0250	1	02/12/24	02/13/24	
o-Xylene	ND	0.0250	1	02/12/24	02/13/24	
p,m-Xylene	ND	0.0500	1	02/12/24	02/13/24	
Total Xylenes	ND	0.0250	1	02/12/24	02/13/24	
Surrogate: Bromofluorobenzene		103 %	70-130	02/12/24	02/13/24	
Surrogate: 1,2-Dichloroethane-d4		109 %	70-130	02/12/24	02/13/24	
Surrogate: Toluene-d8		90.0 %	70-130	02/12/24	02/13/24	
Nonhalogenated Organics by EPA 8015D - GRO						
	mg/kg	mg/kg		Analyst: RKS		Batch: 2407014
Gasoline Range Organics (C6-C10)	ND	20.0	1	02/12/24	02/13/24	
Surrogate: Bromofluorobenzene		103 %	70-130	02/12/24	02/13/24	
Surrogate: 1,2-Dichloroethane-d4		109 %	70-130	02/12/24	02/13/24	
Surrogate: Toluene-d8		90.0 %	70-130	02/12/24	02/13/24	
Nonhalogenated Organics by EPA 8015D - DRO/ORO						
	mg/kg	mg/kg		Analyst: NV		Batch: 2407030
Diesel Range Organics (C10-C28)	ND	25.0	1	02/13/24	02/13/24	
Oil Range Organics (C28-C36)	ND	50.0	1	02/13/24	02/13/24	
Surrogate: n-Nonane		100 %	50-200	02/13/24	02/13/24	
Anions by EPA 300.0/9056A						
	mg/kg	mg/kg		Analyst: DT		Batch: 2407012
Chloride	35.5	20.0	1	02/12/24	02/14/24	



QC Summary Data

Matador Resources, LLC.	Project Name:	Uncle Don State TB	Reported:
5400 LBJ Freeway, Suite 1500	Project Number:	23052-0001	
Dallas TX, 75240	Project Manager:	Ashley Giovengo	2/16/2024 8:20:27AM

Volatile Organic Compounds by EPA 8260B

Analyst: RKS

Analyte	Result	Reporting Limit	Spike Level	Source Result	Rec	Rec Limits	RPD	RPD Limit	Notes
	mg/kg	mg/kg	mg/kg	mg/kg	%	%	%	%	

Blank (2407014-BLK1) Prepared: 02/12/24 Analyzed: 02/13/24

Benzene	ND	0.0250							
Ethylbenzene	ND	0.0250							
Toluene	ND	0.0250							
o-Xylene	ND	0.0250							
p,m-Xylene	ND	0.0500							
Total Xylenes	ND	0.0250							
Surrogate: Bromofluorobenzene	0.574		0.500		115	70-130			
Surrogate: 1,2-Dichloroethane-d4	0.537		0.500		107	70-130			
Surrogate: Toluene-d8	0.452		0.500		90.4	70-130			

LCS (2407014-BS1) Prepared: 02/12/24 Analyzed: 02/13/24

Benzene	2.75	0.0250	2.50		110	70-130			
Ethylbenzene	2.32	0.0250	2.50		92.6	70-130			
Toluene	2.28	0.0250	2.50		91.2	70-130			
o-Xylene	2.34	0.0250	2.50		93.6	70-130			
p,m-Xylene	4.54	0.0500	5.00		90.7	70-130			
Total Xylenes	6.88	0.0250	7.50		91.7	70-130			
Surrogate: Bromofluorobenzene	0.528		0.500		106	70-130			
Surrogate: 1,2-Dichloroethane-d4	0.523		0.500		105	70-130			
Surrogate: Toluene-d8	0.462		0.500		92.4	70-130			

Matrix Spike (2407014-MS1) Source: E402096-04 Prepared: 02/12/24 Analyzed: 02/13/24

Benzene	2.95	0.0250	2.50	ND	118	48-131			
Ethylbenzene	2.46	0.0250	2.50	ND	98.3	45-135			
Toluene	2.40	0.0250	2.50	ND	96.1	48-130			
o-Xylene	2.53	0.0250	2.50	ND	101	43-135			
p,m-Xylene	4.91	0.0500	5.00	ND	98.2	43-135			
Total Xylenes	7.44	0.0250	7.50	ND	99.2	43-135			
Surrogate: Bromofluorobenzene	0.541		0.500		108	70-130			
Surrogate: 1,2-Dichloroethane-d4	0.531		0.500		106	70-130			
Surrogate: Toluene-d8	0.455		0.500		90.9	70-130			

Matrix Spike Dup (2407014-MSD1) Source: E402096-04 Prepared: 02/12/24 Analyzed: 02/13/24

Benzene	2.83	0.0250	2.50	ND	113	48-131	4.01	23	
Ethylbenzene	2.37	0.0250	2.50	ND	94.9	45-135	3.48	27	
Toluene	2.31	0.0250	2.50	ND	92.4	48-130	3.88	24	
o-Xylene	2.56	0.0250	2.50	ND	102	43-135	1.10	27	
p,m-Xylene	4.96	0.0500	5.00	ND	99.2	43-135	1.05	27	
Total Xylenes	7.52	0.0250	7.50	ND	100	43-135	1.07	27	
Surrogate: Bromofluorobenzene	0.562		0.500		112	70-130			
Surrogate: 1,2-Dichloroethane-d4	0.523		0.500		105	70-130			
Surrogate: Toluene-d8	0.451		0.500		90.1	70-130			



QC Summary Data

Matador Resources, LLC.	Project Name:	Uncle Don State TB	Reported:
5400 LBJ Freeway, Suite 1500	Project Number:	23052-0001	
Dallas TX, 75240	Project Manager:	Ashley Giovengo	2/16/2024 8:20:27AM

Nonhalogenated Organics by EPA 8015D - GRO

Analyst: RKS

Analyte	Result mg/kg	Reporting Limit mg/kg	Spike Level mg/kg	Source Result mg/kg	Rec %	Rec Limits %	RPD %	RPD Limit %	Notes
---------	-----------------	-----------------------------	-------------------------	---------------------------	----------	--------------------	----------	-------------------	-------

Blank (2407014-BLK1) Prepared: 02/12/24 Analyzed: 02/13/24

Gasoline Range Organics (C6-C10)	ND	20.0							
Surrogate: Bromofluorobenzene	0.574		0.500		115	70-130			
Surrogate: 1,2-Dichloroethane-d4	0.537		0.500		107	70-130			
Surrogate: Toluene-d8	0.452		0.500		90.4	70-130			

LCS (2407014-BS2) Prepared: 02/12/24 Analyzed: 02/13/24

Gasoline Range Organics (C6-C10)	36.1	20.0	50.0		72.2	70-130			
Surrogate: Bromofluorobenzene	0.526		0.500		105	70-130			
Surrogate: 1,2-Dichloroethane-d4	0.527		0.500		105	70-130			
Surrogate: Toluene-d8	0.458		0.500		91.5	70-130			

Matrix Spike (2407014-MS2) Source: E402096-04 Prepared: 02/12/24 Analyzed: 02/13/24

Gasoline Range Organics (C6-C10)	46.2	20.0	50.0	ND	92.4	70-130			
Surrogate: Bromofluorobenzene	0.562		0.500		112	70-130			
Surrogate: 1,2-Dichloroethane-d4	0.529		0.500		106	70-130			
Surrogate: Toluene-d8	0.457		0.500		91.4	70-130			

Matrix Spike Dup (2407014-MSD2) Source: E402096-04 Prepared: 02/12/24 Analyzed: 02/13/24

Gasoline Range Organics (C6-C10)	43.4	20.0	50.0	ND	86.8	70-130	6.33	20	
Surrogate: Bromofluorobenzene	0.523		0.500		105	70-130			
Surrogate: 1,2-Dichloroethane-d4	0.525		0.500		105	70-130			
Surrogate: Toluene-d8	0.454		0.500		90.8	70-130			



QC Summary Data

Matador Resources, LLC.	Project Name:	Uncle Don State TB	Reported:
5400 LBJ Freeway, Suite 1500	Project Number:	23052-0001	
Dallas TX, 75240	Project Manager:	Ashley Giovengo	2/16/2024 8:20:27AM

Nonhalogenated Organics by EPA 8015D - DRO/ORO

Analyst: NV

Analyte	Result mg/kg	Reporting Limit mg/kg	Spike Level mg/kg	Source Result mg/kg	Rec %	Rec Limits %	RPD %	RPD Limit %	Notes
---------	-----------------	-----------------------------	-------------------------	---------------------------	----------	--------------------	----------	-------------------	-------

Blank (2407030-BLK1)					Prepared: 02/13/24 Analyzed: 02/13/24				
Diesel Range Organics (C10-C28)	ND	25.0							
Oil Range Organics (C28-C36)	ND	50.0							
Surrogate: n-Nonane	56.8		50.0		114	50-200			

LCS (2407030-BS1)					Prepared: 02/13/24 Analyzed: 02/13/24				
Diesel Range Organics (C10-C28)	288	25.0	250		115	38-132			
Surrogate: n-Nonane	56.3		50.0		113	50-200			

Matrix Spike (2407030-MS1)					Source: E402101-09		Prepared: 02/13/24 Analyzed: 02/13/24		
Diesel Range Organics (C10-C28)	301	25.0	250	ND	121	38-132			
Surrogate: n-Nonane	55.9		50.0		112	50-200			

Matrix Spike Dup (2407030-MSD1)					Source: E402101-09		Prepared: 02/13/24 Analyzed: 02/13/24		
Diesel Range Organics (C10-C28)	288	25.0	250	ND	115	38-132	4.50	20	
Surrogate: n-Nonane	55.1		50.0		110	50-200			



QC Summary Data

Matador Resources, LLC. 5400 LBJ Freeway, Suite 1500 Dallas TX, 75240	Project Name: Uncle Don State TB Project Number: 23052-0001 Project Manager: Ashley Giovengo	Reported: 2/16/2024 8:20:27AM
---	--	--------------------------------------

Anions by EPA 300.0/9056A

Analyst: DT

Analyte	Result mg/kg	Reporting Limit mg/kg	Spike Level mg/kg	Source Result mg/kg	Rec %	Rec Limits %	RPD %	RPD Limit %	Notes
---------	-----------------	-----------------------------	-------------------------	---------------------------	----------	--------------------	----------	-------------------	-------

Blank (2407012-BLK1)					Prepared: 02/12/24 Analyzed: 02/13/24				
Chloride	ND	20.0							
LCS (2407012-BS1)					Prepared: 02/12/24 Analyzed: 02/13/24				
Chloride	257	20.0	250		103	90-110			
Matrix Spike (2407012-MS1)					Source: E402085-04		Prepared: 02/12/24 Analyzed: 02/13/24		
Chloride	276	20.0	250	23.4	101	80-120			
Matrix Spike Dup (2407012-MSD1)					Source: E402085-04		Prepared: 02/12/24 Analyzed: 02/13/24		
Chloride	276	20.0	250	23.4	101	80-120	0.122	20	

QC Summary Report Comment:
Calculations are based off of the raw (non-rounded) data. However, for reporting purposes all QC data is rounded to three significant figures.
Therefore, hand calculated values may differ slightly.



Definitions and Notes

Matador Resources, LLC.	Project Name:	Uncle Don State TB	
5400 LBJ Freeway, Suite 1500	Project Number:	23052-0001	Reported:
Dallas TX, 75240	Project Manager:	Ashley Giovengo	02/16/24 08:20

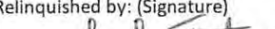

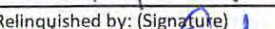
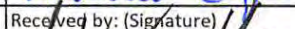

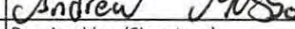
- ND Analyte NOT DETECTED at or above the reporting limit
- NR Not Reported
- RPD Relative Percent Difference
- DNI Did Not Ignite
- DNR Did not react with the addition of acid or base.

Note (1): Methods marked with ** are non-accredited methods.

Note (2): Soil data is reported on an "as received" weight basis, unless reported otherwise.



[illegible]

Additional Instructions: Please CC: cburton@ensolum.com, agiovengo@ensolum.com, chamilton@ensolum.com, ehafft@ensolum.com, iestrella@ensolum.com									
I, (field sampler), attest to the validity and authenticity of this sample. I am aware that tampering with or intentionally mislabelling the sample location, date or time of collection is considered fraud and may be grounds for legal action.						Samples requiring thermal preservation must be received on ice the day they are sampled or received packed in ice at an avg temp above 0 but less than 5 °C on subsequent days.			
Sampled by: Israel Estrella									
Relinquished by: (Signature) 	Date 2/9/24	Time 8:10 am	Received by: (Signature) 	Date 2-9-24	Time 0810	Lab Use Only Received on ice: <input checked="" type="radio"/> Y / <input type="radio"/> N			
Relinquished by: (Signature) 	Date 2-9-24	Time 1630	Received by: (Signature) 	Date 2-9-24	Time 1830	T1 _____ T2 _____ T3 _____			
Relinquished by: (Signature) 	Date 2-9-24	Time 2400	Received by: (Signature) 	Date 2-12-24	Time 0800	AVG Temp °C <u>4</u>			
Sample Matrix: S - Soil, Sd - Solid, Sg - Sludge, A - Aqueous, O - Other _____						Container Type: g - glass, p - poly/plastic, ag - amber glass, v - VOA			
Note: Samples are discarded 30 days after results are reported unless other arrangements are made. Hazardous samples will be returned to client or disposed of at the client expense. The report for the analysis of the above samples is applicable only to those samples received by the laboratory with this COC. The liability of the laboratory is limited to the amount paid for on the report.									

Envirotech Analytical Laboratory

Printed: 2/15/2024 3:36:47PM

Sample Receipt Checklist (SRC)

Instructions: Please take note of any NO checkmarks.

If we receive no response concerning these items within 24 hours of the date of this notice, all the samples will be analyzed as requested.

Client: Matador Resources, LLC.

Date Received: 02/12/24 08:00

Work Order ID: E402096

Phone: (972) 371-5200

Date Logged In: 02/12/24 08:14

Logged In By: Angelina Pineda

Email: agiovngo@ensolum.com

Due Date: 02/16/24 17:00 (4 day TAT)

Chain of Custody (COC)

1. Does the sample ID match the COC? Yes
2. Does the number of samples per sampling site location match the COC? Yes
3. Were samples dropped off by client or carrier? Yes
4. Was the COC complete, i.e., signatures, dates/times, requested analyses? Yes
5. Were all samples received within holding time? Yes

Carrier: Courier

Note: Analysis, such as pH which should be conducted in the field,
i.e., 15 minute hold time, are not included in this discussion.

Sample Turn Around Time (TAT)

6. Did the COC indicate standard TAT, or Expedited TAT? Yes

Sample Cooler

7. Was a sample cooler received? Yes
8. If yes, was cooler received in good condition? Yes
9. Was the sample(s) received intact, i.e., not broken? Yes
10. Were custody/security seals present? No
11. If yes, were custody/security seals intact? NA
12. Was the sample received on ice? If yes, the recorded temp is 4°C, i.e., 6°±2°C? Yes

Note: Thermal preservation is not required, if samples are received w/i 15
minutes of sampling

13. If no visible ice, record the temperature. Actual sample temperature: 4°C

Sample Container

14. Are aqueous VOC samples present? No
15. Are VOC samples collected in VOA Vials? NA
16. Is the head space less than 6-8 mm (pea sized or less)? NA
17. Was a trip blank (TB) included for VOC analyses? NA
18. Are non-VOC samples collected in the correct containers? Yes
19. Is the appropriate volume/weight or number of sample containers collected? Yes

Field Label

20. Were field sample labels filled out with the minimum information:

Sample ID? Yes

Date/Time Collected? Yes

Collectors name? Yes

Sample Preservation

21. Does the COC or field labels indicate the samples were preserved? No
22. Are sample(s) correctly preserved? NA
24. Is lab filtration required and/or requested for dissolved metals? No

Multiphase Sample Matrix

26. Does the sample have more than one phase, i.e., multiphase? No
27. If yes, does the COC specify which phase(s) is to be analyzed? NA

Subcontract Laboratory

28. Are samples required to get sent to a subcontract laboratory? No
29. Was a subcontract laboratory specified by the client and if so who? NA Subcontract Lab: NA

Client InstructionComments/Resolution

Signature of client authorizing changes to the COC or sample disposition.

Date



envirotech Inc.



APPENDIX E

Email Correspondence

From: [Ashley Giovengo](#)
To: [Chad Hamilton](#)
Subject: FW: The Oil Conservation Division (OCD) has accepted the application, Application ID: 305587 Uncle Don
Date: Friday, January 19, 2024 11:59:30 AM
Attachments: [image001.png](#)
[image002.png](#)
[image003.png](#)
[image004.png](#)



Ashley Giovengo

Senior Engineer

575-988-0055

Ensolum, LLC

in f 

From: Jason Touchet <jason.touchet@matadorresources.com>
Sent: Friday, January 19, 2024 11:59 AM
To: Ashley Giovengo <agiovengo@ensolum.com>
Cc: Clinton Talley <clinton.talley@matadorresources.com>
Subject: FW: The Oil Conservation Division (OCD) has accepted the application, Application ID: 305587 Uncle Don

[**EXTERNAL EMAIL**]

Thanks,
Jason Touchet
EHS Field Technician
Matador Resources Company
Cell: 337-652-3463
Email: jason.touchet@matadorresources.com

From: OCDOnline@state.nm.us <OCDOnline@state.nm.us>

Sent: Friday, January 19, 2024 11:41 AM

To: Jason Touchet <jason.touchet@matadorresources.com>

Subject: The Oil Conservation Division (OCD) has accepted the application, Application ID: 305587

****EXTERNAL EMAIL****

To whom it may concern (c/o Jason Touchet for MATADOR PRODUCTION COMPANY),

The OCD has received the submitted *Notification for Liner Inspection for a Release* (C-141L), for incident ID (n#) nAPP2401670338.

The liner inspection is expected to take place:

When: 01/25/2024 @ 09:00

Where: L-35-22S-35E 0 FNL 0 FEL (32.34135,-103.3448)

Additional Information: n/a

Additional Instructions: 32.34135° N, -103.3448° W

An OCD representative may be available onsite at the date and time reported. In the absence or presence of an OCD representative, liner inspection pursuant to 19.15.29.11.A(5)(a) NMAC is required. Should there be a change in the scheduled date and time of the sampling event, then another notification should be resubmitted through OCD permitting as soon as possible.

- **Failure to notify the OCD of liner inspections including any changes in date/time per the requirements of 19.15.29.11.A(5)(a)(ii) NMAC, may result in the inspection not being accepted.**

If you have any questions regarding this application, or don't know why you have received this email, please contact us.

New Mexico Energy, Minerals and Natural Resources Department
1220 South St. Francis Drive
Santa Fe, NM 87505

This message is strictly confidential and is for the sole use of the intended recipient. If you are not the intended recipient of this message, you may not disclose, print, copy, disseminate or otherwise use this message or the information included herein. If you are not the intended recipient, please reply and notify the sender (only) and promptly delete the message.

From: [Ashley Giovengo](#)
To: [Chad Hamilton](#)
Subject: FW: The Oil Conservation Division (OCD) has accepted the application, Application ID: 310379
Date: Tuesday, February 20, 2024 7:53:41 AM
Attachments: [image001.png](#)
[image002.png](#)
[image003.png](#)
[image004.png](#)



Ashley Giovengo

Senior Scientist

575-988-0055

Ensolum, LLC

in f

From: Jason Touchet <jason.touchet@matadorresources.com>
Sent: Thursday, February 1, 2024 10:15 AM
To: Ashley Giovengo <agiovengo@ensolum.com>
Cc: Clinton Talley <clinton.talley@matadorresources.com>
Subject: FW: The Oil Conservation Division (OCD) has accepted the application, Application ID: 310379

[**EXTERNAL EMAIL**]

EXTERNAL EMAIL

To whom it may concern (c/o Jason Touchet for MATADOR PRODUCTION COMPANY),

The OCD has received the submitted *Notification for (Final) Sampling of a Release* (C-141N), for incident ID (n#) nAPP2401670338.

The sampling event is expected to take place:

When: 02/08/2024 @ 09:00

Where: L-35-22S-35E 0 FNL 0 FEL (32.34135,-103.3448)

Additional Information: n/a

Additional Instructions: 32.34135 -103.3448

An OCD representative may be available onsite at the date and time reported. In the absence or presence of an OCD representative, sampling pursuant to 19.15.29.12.D NMAC is required. Sampling must be performed following an approved sampling plan or pursuant to 19.15.29.12.D.(1).(c) NMAC. Should there be a change in the scheduled date and time of the sampling event, then another notification should be resubmitted through OCD permitting as soon as possible.

- **Failure to notify the OCD of sampling events including any changes in date/time per the requirements of 19.15.29.12.D.(1).(a) NMAC, may result in the remediation closure samples not being accepted.**

If you have any questions regarding this application, or don't know why you have received this email, please contact us.

New Mexico Energy, Minerals and Natural Resources Department
1220 South St. Francis Drive
Santa Fe, NM 87505

Thanks,
Jason Touchet
EHS Field Technician
Matador Resources Company
Cell: 337-652-3463
Email: jason.touchet@matadorresources.com

This message is strictly confidential and is for the sole use of the intended recipient. If you are not the intended recipient of this message, you may not disclose, print, copy, disseminate or otherwise use this message or the information included herein. If you are not the intended recipient, please reply and notify the sender (only) and promptly delete the message.

District I
1625 N. French Dr., Hobbs, NM 88240
Phone:(575) 393-6161 Fax:(575) 393-0720
District II
811 S. First St., Artesia, NM 88210
Phone:(575) 748-1283 Fax:(575) 748-9720
District III
1000 Rio Brazos Rd., Aztec, NM 87410
Phone:(505) 334-6178 Fax:(505) 334-6170
District IV
1220 S. St Francis Dr., Santa Fe, NM 87505
Phone:(505) 476-3470 Fax:(505) 476-3462

State of New Mexico
Energy, Minerals and Natural Resources
Oil Conservation Division
1220 S. St Francis Dr.
Santa Fe, NM 87505

QUESTIONS

Action 320932

QUESTIONS

Operator: MATADOR PRODUCTION COMPANY One Lincoln Centre Dallas, TX 75240	OGRID: 228937
	Action Number: 320932
	Action Type: [C-141] Deferral Request C-141 (C-141-v-Deferral)

QUESTIONS

Prerequisites	
Incident ID (n#)	nAPP2401670338
Incident Name	NAPP2401670338 UNCLE DON STATE TB @ 0
Incident Type	Oil Release
Incident Status	Deferral Request Received

Location of Release Source	
Please answer all the questions in this group.	
Site Name	UNCLE DON STATE TB
Date Release Discovered	01/16/2024
Surface Owner	State

Incident Details	
Please answer all the questions in this group.	
Incident Type	Oil Release
Did this release result in a fire or is the result of a fire	No
Did this release result in any injuries	No
Has this release reached or does it have a reasonable probability of reaching a watercourse	No
Has this release endangered or does it have a reasonable probability of endangering public health	No
Has this release substantially damaged or will it substantially damage property or the environment	No
Is this release of a volume that is or may with reasonable probability be detrimental to fresh water	No

Nature and Volume of Release	
Material(s) released, please answer all that apply below. Any calculations or specific justifications for the volumes provided should be attached to the follow-up C-141 submission.	
Crude Oil Released (bbls) Details	Cause: Freeze Production Tank Crude Oil Released: 128 BBL Recovered: 128 BBL Lost: 0 BBL.
Produced Water Released (bbls) Details	Not answered.
Is the concentration of chloride in the produced water >10,000 mg/l	No
Condensate Released (bbls) Details	Not answered.
Natural Gas Vented (Mcf) Details	Not answered.
Natural Gas Flared (Mcf) Details	Not answered.
Other Released Details	Not answered.
Are there additional details for the questions above (i.e. any answer containing Other, Specify, Unknown, and/or Fire, or any negative lost amounts)	A cold front came through the area causing the freezing and failure of the valve.

District I

1625 N. French Dr., Hobbs, NM 88240
Phone:(575) 393-6161 Fax:(575) 393-0720

District II

811 S. First St., Artesia, NM 88210
Phone:(575) 748-1283 Fax:(575) 748-9720

District III

1000 Rio Brazos Rd., Aztec, NM 87410
Phone:(505) 334-6178 Fax:(505) 334-6170

District IV

1220 S. St Francis Dr., Santa Fe, NM 87505
Phone:(505) 476-3470 Fax:(505) 476-3462

State of New Mexico
Energy, Minerals and Natural Resources
Oil Conservation Division
1220 S. St Francis Dr.
Santa Fe, NM 87505

QUESTIONS, Page 2

Action 320932

QUESTIONS (continued)

Operator: MATADOR PRODUCTION COMPANY One Lincoln Centre Dallas, TX 75240	OGRID:
	228937
	Action Number:
	320932
Action Type:	
[C-141] Deferral Request C-141 (C-141-v-Deferral)	

QUESTIONS

Nature and Volume of Release (continued)	
Is this a gas only submission (i.e. only significant Mcf values reported)	No, according to supplied volumes this does not appear to be a "gas only" report.
Was this a major release as defined by Subsection A of 19.15.29.7 NMAC	Yes
Reasons why this would be considered a submission for a notification of a major release	From paragraph A. "Major release" determine using: (1) an unauthorized release of a volume, excluding gases, of 25 barrels or more.
With the implementation of the 19.15.27 NMAC (05/25/2021), venting and/or flaring of natural gas (i.e. gas only) are to be submitted on the C-129 form.	

Initial Response

The responsible party must undertake the following actions immediately unless they could create a safety hazard that would result in injury.

The source of the release has been stopped	True
The impacted area has been secured to protect human health and the environment	True
Released materials have been contained via the use of berms or dikes, absorbent pads, or other containment devices	True
All free liquids and recoverable materials have been removed and managed appropriately	True
If all the actions described above have not been undertaken, explain why	Not answered.

Per Paragraph (4) of Subsection B of 19.15.29.8 NMAC the responsible party may commence remediation immediately after discovery of a release. If remediation has begun, please prepare and attach a narrative of actions to date in the follow-up C-141 submission. If remedial efforts have been successfully completed or if the release occurred within a lined containment area (see Subparagraph (a) of Paragraph (5) of Subsection A of 19.15.29.11 NMAC), please prepare and attach all information needed for closure evaluation in the follow-up C-141 submission.

I hereby certify that the information given above is true and complete to the best of my knowledge and understand that pursuant to OCD rules and regulations all operators are required to report and/or file certain release notifications and perform corrective actions for releases which may endanger public health or the environment. The acceptance of a C-141 report by the OCD does not relieve the operator of liability should their operations have failed to adequately investigate and remediate contamination that pose a threat to groundwater, surface water, human health or the environment. In addition, OCD acceptance of a C-141 report does not relieve the operator of responsibility for compliance with any other federal, state, or local laws and/or regulations.

I hereby agree and sign off to the above statement	Name: Clint Talley Title: Assistant Foreman Email: clinton.talley@matadorresources.com Date: 01/22/2024
--	--

District I

1625 N. French Dr., Hobbs, NM 88240
Phone:(575) 393-6161 Fax:(575) 393-0720

District II

811 S. First St., Artesia, NM 88210
Phone:(575) 748-1283 Fax:(575) 748-9720

District III

1000 Rio Brazos Rd., Aztec, NM 87410
Phone:(505) 334-6178 Fax:(505) 334-6170

District IV

1220 S. St Francis Dr., Santa Fe, NM 87505
Phone:(505) 476-3470 Fax:(505) 476-3462

State of New Mexico
Energy, Minerals and Natural Resources
Oil Conservation Division
1220 S. St Francis Dr.
Santa Fe, NM 87505

QUESTIONS, Page 3

Action 320932

QUESTIONS (continued)

Operator: MATADOR PRODUCTION COMPANY One Lincoln Centre Dallas, TX 75240	OGRID: 228937
	Action Number: 320932
	Action Type: [C-141] Deferral Request C-141 (C-141-v-Deferral)

QUESTIONS**Site Characterization**

Please answer all the questions in this group (only required when seeking remediation plan approval and beyond). This information must be provided to the appropriate district office no later than 90 days after the release discovery date.

What is the shallowest depth to groundwater beneath the area affected by the release in feet below ground surface (ft bgs)	Between 100 and 500 (ft.)
What method was used to determine the depth to ground water	NM OSE iWaters Database Search
Did this release impact groundwater or surface water	No
What is the minimum distance, between the closest lateral extents of the release and the following surface areas:	
A continuously flowing watercourse or any other significant watercourse	Between ½ and 1 (mi.)
Any lakebed, sinkhole, or playa lake (measured from the ordinary high-water mark)	Greater than 5 (mi.)
An occupied permanent residence, school, hospital, institution, or church	Greater than 5 (mi.)
A spring or a private domestic fresh water well used by less than five households for domestic or stock watering purposes	Greater than 5 (mi.)
Any other fresh water well or spring	Greater than 5 (mi.)
Incorporated municipal boundaries or a defined municipal fresh water well field	Greater than 5 (mi.)
A wetland	Between ½ and 1 (mi.)
A subsurface mine	Greater than 5 (mi.)
An (non-karst) unstable area	Greater than 5 (mi.)
Categorize the risk of this well / site being in a karst geology	Low
A 100-year floodplain	Greater than 5 (mi.)
Did the release impact areas not on an exploration, development, production, or storage site	No

Remediation Plan

Please answer all the questions that apply or are indicated. This information must be provided to the appropriate district office no later than 90 days after the release discovery date.

Requesting a remediation plan approval with this submission	Yes
Attach a comprehensive report demonstrating the lateral and vertical extents of soil contamination associated with the release have been determined, pursuant to 19.15.29.11 NMAC and 19.15.29.13 NMAC.	
Have the lateral and vertical extents of contamination been fully delineated	Yes
Was this release entirely contained within a lined containment area	No

Soil Contamination Sampling: (Provide the highest observable value for each, in milligrams per kilograms.)

Chloride (EPA 300.0 or SM4500 Cl B)	643
TPH (GRO+DRO+MRO) (EPA SW-846 Method 8015M)	29390
GRO+DRO (EPA SW-846 Method 8015M)	23450
BTEX (EPA SW-846 Method 8021B or 8260B)	822
Benzene (EPA SW-846 Method 8021B or 8260B)	19

Per Subsection B of 19.15.29.11 NMAC unless the site characterization report includes completed efforts at remediation, the report must include a proposed remediation plan in accordance with 19.15.29.12 NMAC, which includes the anticipated timelines for beginning and completing the remediation.

On what estimated date will the remediation commence	02/08/2024
On what date will (or did) the final sampling or liner inspection occur	01/25/2024
On what date will (or was) the remediation complete(d)	02/08/2024
What is the estimated surface area (in square feet) that will be reclaimed	1304
What is the estimated volume (in cubic yards) that will be reclaimed	145
What is the estimated surface area (in square feet) that will be remediated	678
What is the estimated volume (in cubic yards) that will be remediated	13

These estimated dates and measurements are recognized to be the best guess or calculation at the time of submission and may (be) change(d) over time as more remediation efforts are completed.

The OCD recognizes that proposed remediation measures may have to be minimally adjusted in accordance with the physical realities encountered during remediation. If the responsible party has any need to significantly deviate from the remediation plan proposed, then it should consult with the division to determine if another remediation plan submission is required.

District I

1625 N. French Dr., Hobbs, NM 88240
Phone:(575) 393-6161 Fax:(575) 393-0720

District II

811 S. First St., Artesia, NM 88210
Phone:(575) 748-1283 Fax:(575) 748-9720

District III

1000 Rio Brazos Rd., Aztec, NM 87410
Phone:(505) 334-6178 Fax:(505) 334-6170

District IV

1220 S. St Francis Dr., Santa Fe, NM 87505
Phone:(505) 476-3470 Fax:(505) 476-3462

State of New Mexico
Energy, Minerals and Natural Resources
Oil Conservation Division
1220 S. St Francis Dr.
Santa Fe, NM 87505

QUESTIONS, Page 4

Action 320932

QUESTIONS (continued)

Operator: MATADOR PRODUCTION COMPANY One Lincoln Centre Dallas, TX 75240	OGRID:	228937
	Action Number:	320932
	Action Type:	[C-141] Deferral Request C-141 (C-141-v-Deferral)

QUESTIONS**Remediation Plan (continued)**

Please answer all the questions that apply or are indicated. This information must be provided to the appropriate district office no later than 90 days after the release discovery date.

This remediation will (or is expected to) utilize the following processes to remediate / reduce contaminants:

(Select all answers below that apply.)	
(Ex Situ) Excavation and off-site disposal (i.e. dig and haul, hydrovac, etc.)	Yes
Which OCD approved facility will be used for off-site disposal	Not answered.
OR which OCD approved well (API) will be used for off-site disposal	Not answered.
OR is the off-site disposal site, to be used, out-of-state	Not answered.
OR is the off-site disposal site, to be used, an NMED facility	Yes
What is the name of the NMED facility	R360
(Ex Situ) Excavation and on-site remediation (i.e. On-Site Land Farms)	Not answered.
(In Situ) Soil Vapor Extraction	Not answered.
(In Situ) Chemical processing (i.e. Soil Shredding, Potassium Permanganate, etc.)	Not answered.
(In Situ) Biological processing (i.e. Microbes / Fertilizer, etc.)	Not answered.
(In Situ) Physical processing (i.e. Soil Washing, Gypsum, Disking, etc.)	Not answered.
Ground Water Abatement pursuant to 19.15.30 NMAC	Not answered.
OTHER (Non-listed remedial process)	Not answered.

Per Subsection B of 19.15.29.11 NMAC unless the site characterization report includes completed efforts at remediation, the report must include a proposed remediation plan in accordance with 19.15.29.12 NMAC, which includes the anticipated timelines for beginning and completing the remediation.

I hereby certify that the information given above is true and complete to the best of my knowledge and understand that pursuant to OCD rules and regulations all operators are required to report and/or file certain release notifications and perform corrective actions for releases which may endanger public health or the environment. The acceptance of a C-141 report by the OCD does not relieve the operator of liability should their operations have failed to adequately investigate and remediate contamination that pose a threat to groundwater, surface water, human health or the environment. In addition, OCD acceptance of a C-141 report does not relieve the operator of responsibility for compliance with any other federal, state, or local laws and/or regulations.

I hereby agree and sign off to the above statement	Name: Clint Talley Title: Assistant Foreman Email: clinton.talley@matadorresources.com Date: 03/06/2024
--	--

The OCD recognizes that proposed remediation measures may have to be minimally adjusted in accordance with the physical realities encountered during remediation. If the responsible party has any need to significantly deviate from the remediation plan proposed, then it should consult with the division to determine if another remediation plan submission is required.

District I

1625 N. French Dr., Hobbs, NM 88240
Phone:(575) 393-6161 Fax:(575) 393-0720

District II

811 S. First St., Artesia, NM 88210
Phone:(575) 748-1283 Fax:(575) 748-9720

District III

1000 Rio Brazos Rd., Aztec, NM 87410
Phone:(505) 334-6178 Fax:(505) 334-6170

District IV

1220 S. St Francis Dr., Santa Fe, NM 87505
Phone:(505) 476-3470 Fax:(505) 476-3462

State of New Mexico
Energy, Minerals and Natural Resources
Oil Conservation Division
1220 S. St Francis Dr.
Santa Fe, NM 87505

QUESTIONS, Page 5

Action 320932

QUESTIONS (continued)

Operator: MATADOR PRODUCTION COMPANY One Lincoln Centre Dallas, TX 75240	OGRID:	228937
	Action Number:	320932
	Action Type:	[C-141] Deferral Request C-141 (C-141-v-Deferral)

QUESTIONS**Deferral Requests Only**

Only answer the questions in this group if seeking a deferral upon approval this submission. Each of the following items must be confirmed as part of any request for deferral of remediation.

Requesting a deferral of the remediation closure due date with the approval of this submission	Yes
Have the lateral and vertical extents of contamination been fully delineated	Yes
Is the remaining contamination in areas immediately under or around production equipment where remediation could cause a major facility deconstruction	Yes
Please list or describe the production equipment and how (re)moving the equipment would cause major facility deconstruction	Area is below a lined containment area that houses crude oil and produced water storage tanks.
What is the remaining surface area (in square feet) that will still need to be remediated if a deferral is granted	1304
What is the remaining volume (in cubic yards) that will still need to be remediated if a deferral is granted	145
Per Paragraph (2) of Subsection C of 19.15.29.12 NMAC if contamination is located in areas immediately under or around production equipment such as production tanks, wellheads and pipelines where remediation could cause a major facility deconstruction, the remediation, restoration and reclamation may be deferred with division written approval until the equipment is removed during other operations, or when the well or facility is plugged or abandoned, whichever comes first.	
Enter the facility ID (f#) on which this deferral should be granted	Uncle Don Facility Tank Battery [fAPP2203276074]
Enter the well API (30-) on which this deferral should be granted	Not answered.
Contamination does not cause an imminent risk to human health, the environment, or groundwater	True
Per Subsection B of 19.15.29.11 NMAC unless the site characterization report includes completed efforts at remediation, the report must include a proposed remediation plan in accordance with 19.15.29.12 NMAC, which includes the anticipated timelines for beginning and completing the remediation.	
I hereby certify that the information given above is true and complete to the best of my knowledge and understand that pursuant to OCD rules and regulations all operators are required to report and/or file certain release notifications and perform corrective actions for releases which may endanger public health or the environment. The acceptance of a C-141 report by the OCD does not relieve the operator of liability should their operations have failed to adequately investigate and remediate contamination that pose a threat to groundwater, surface water, human health or the environment. In addition, OCD acceptance of a C-141 report does not relieve the operator of responsibility for compliance with any other federal, state, or local laws and/or regulations.	
I hereby agree and sign off to the above statement	Name: Clint Talley Title: Assistant Foreman Email: clinton.talley@matadorresources.com Date: 03/06/2024

District I
1625 N. French Dr., Hobbs, NM 88240
Phone:(575) 393-6161 Fax:(575) 393-0720
District II
811 S. First St., Artesia, NM 88210
Phone:(575) 748-1283 Fax:(575) 748-9720
District III
1000 Rio Brazos Rd., Aztec, NM 87410
Phone:(505) 334-6178 Fax:(505) 334-6170
District IV
1220 S. St Francis Dr., Santa Fe, NM 87505
Phone:(505) 476-3470 Fax:(505) 476-3462

State of New Mexico
Energy, Minerals and Natural Resources
Oil Conservation Division
1220 S. St Francis Dr.
Santa Fe, NM 87505

QUESTIONS, Page 6

Action 320932

QUESTIONS (continued)

Operator: MATADOR PRODUCTION COMPANY One Lincoln Centre Dallas, TX 75240	OGRID: 228937
	Action Number: 320932
	Action Type: [C-141] Deferral Request C-141 (C-141-v-Deferral)

QUESTIONS

Sampling Event Information	
Last sampling notification (C-141N) recorded	310379
Sampling date pursuant to Subparagraph (a) of Paragraph (1) of Subsection D of 19.15.29.12 NMAC	02/08/2024
What was the (estimated) number of samples that were to be gathered	4
What was the sampling surface area in square feet	680

Remediation Closure Request	
Only answer the questions in this group if seeking remediation closure for this release because all remediation steps have been completed.	
Requesting a remediation closure approval with this submission	No

District I
1625 N. French Dr., Hobbs, NM 88240
Phone:(575) 393-6161 Fax:(575) 393-0720
District II
811 S. First St., Artesia, NM 88210
Phone:(575) 748-1283 Fax:(575) 748-9720
District III
1000 Rio Brazos Rd., Aztec, NM 87410
Phone:(505) 334-6178 Fax:(505) 334-6170
District IV
1220 S. St Francis Dr., Santa Fe, NM 87505
Phone:(505) 476-3470 Fax:(505) 476-3462

State of New Mexico
Energy, Minerals and Natural Resources
Oil Conservation Division
1220 S. St Francis Dr.
Santa Fe, NM 87505

CONDITIONS

Action 320932

CONDITIONS

Operator: MATADOR PRODUCTION COMPANY One Lincoln Centre Dallas, TX 75240	OGRID: 228937
	Action Number: 320932
	Action Type: [C-141] Deferral Request C-141 (C-141-v-Deferral)

CONDITIONS

Created By	Condition	Condition Date
scott.rodgers	Deferral approved. Deferral of (BH01, BH02, BH03) is approved until plugging and abandonment or a major facility deconstruction, whichever comes first. A complete and accurate remediation report and/or reclamation report will need to be submitted at that time.	4/23/2024