

Spills In Lined Containment	
Measurements Of Standing Fluid	
Length(Ft)	50
Width(Ft)	40
Depth(in.)	0.5
Total Capacity without tank displacements (bbls)	14.84
No. of 500 bbl Tanks In Standing Fluid	2
No. of Other Tanks In Standing Fluid	
OD Of Other Tanks In Standing Fluid(feet)	
Total Volume of standing fluid accounting for tank displacement.	12.04



Pima Environmental Services
5614 N. Lovington Highway
Hobbs, NM 88240
575-964-7740

March 1, 2024

NMOCD District 2
 811 S. First Street
 Artesia, NM 88210

Re: Liner Inspection, Site Assessment and Closure Report
Shetland 11 CTB 1
API No. N/A
GPS: Latitude 32.053023 Longitude -103.749823
UL -- D, Section 11, T26S, R31E
Eddy County, NM
NMOCD Ref. No. NAPP2320752842

Pima Environmental Services, LLC. (Pima) has been contracted by Devon Energy Production Company, LP (Devon) to perform a spill assessment, Liner Inspection and submit this closure report for a produced water release that occurred at the Shetland 11 CTB 1 (Shetland). The initial C-141 was submitted on August 9, 2023 (Appendix C). This incident was assigned Incident ID NAPP2320752842 by the New Mexico Oil Conservation Division (NMOCD).

Site Characterization

The Shetland is located approximately twenty-two (22) miles southeast of Malaga, NM. This spill site is in Unit D, Section 11, Township 26S, Range 31E, Latitude 32.053023 Longitude -103.749823, Eddy County, NM. Figure 1 references a Location Map.

Per the New Mexico Bureau of Geology and Mineral Resources, the geology is made up of Interlayered eolian sands and piedmont-slope deposits along the eastern flank of the Pecos River valley, primarily between Roswell and Carlsbad. Typically capped by thin eolian deposits. The soil in this area is made up of Tonuco loamy fine sands, 0 to 3 percent slopes according to the United States Department of Agriculture Natural Resources Conservation Service soil survey (Appendix B). The drainage class in this area is excessively drained. There is a high potential for karst geology to be present around the Shetland (Figure 3).

Based on the well water data from the New Mexico Office of the State Engineer water well (C-02090), the depth to the nearest groundwater in this vicinity measures 335 feet below grade surface (BGS), positioned 1.68 miles away from the Shetland, drilled, December 31, 1965. Conversely, as per the United States Geological Survey well water data (USGS320134103384101), the nearest groundwater depth in this region is recorded at 225 feet BGS, situated approximately 4.25 miles away from the Shetland, with the last gauge conducted in 2015. For detailed references to water surveys and the precise locations of water wells, please refer to Appendix A, inclusive of the relevant maps.

Table 1 NMAC and Closure Criteria 19.15.29

Depth to Groundwater (Appendix A)	Constituent & Limits				
	Chlorides	Total TPH	GRO+DRO	BTEX	Benzene
<50' High Karst	600 mg/kg	100 mg/kg		50 mg/kg	10 mg/kg
51-100'	10,000 mg/kg	2,500 mg/kg	1,000 mg/kg	50 mg/kg	10 mg/kg
>100'	20,000 mg/kg	2,500 mg/kg	1,000 mg/kg	50 mg/kg	10 mg/kg

Shetland 11 CTB 1|Devon Energy

Reference Figure 2 for a Topographic Map.

Release Information

NAPP2320752842: On July 26, 2023, a pin hole in the strain pot for the water transfer pump and bad flange from the discharge line caused fluid to be released. The released fluids were calculated to be approximately 12 barrels (bbls) of produced water. A vacuum truck was able to recover 12 bbls of standing fluid.

Site Assessment and Liner Inspection

On February 29, 2024, after submitting the 48-hour notification application ID:318178 to the OCD, Pima Environmental conducted a liner inspection at this location. We concluded that this liner and containment maintained its integrity and was able to retain the fluids. The liner inspection form and photographic documentation can be found in Appendix C.

Closure Request

After careful review, Pima requests that this incident, NAPP2320752842, be closed. Devon has complied with the applicable closure requirements set forth in rule 19.15.19.12 NMAC.

Should you have any questions or need additional information, please feel free to contact Gio Gomez at 806-782-1151 or gio@pimaoil.com.

Respectfully,



Gio Gomez
Project Manager
Pima Environmental Services,

Attachments

Figures:

- 1- Location Map
- 2- Topographic Map
- 3- Karst Map
- 4- Site Map

Appendices:

- Appendix A – Referenced Water Surveys
- Appendix B – 48 Hour notification
- Appendix C – Liner Inspection Form & Photographic Documentation



Pima Environmental Services



Figures:

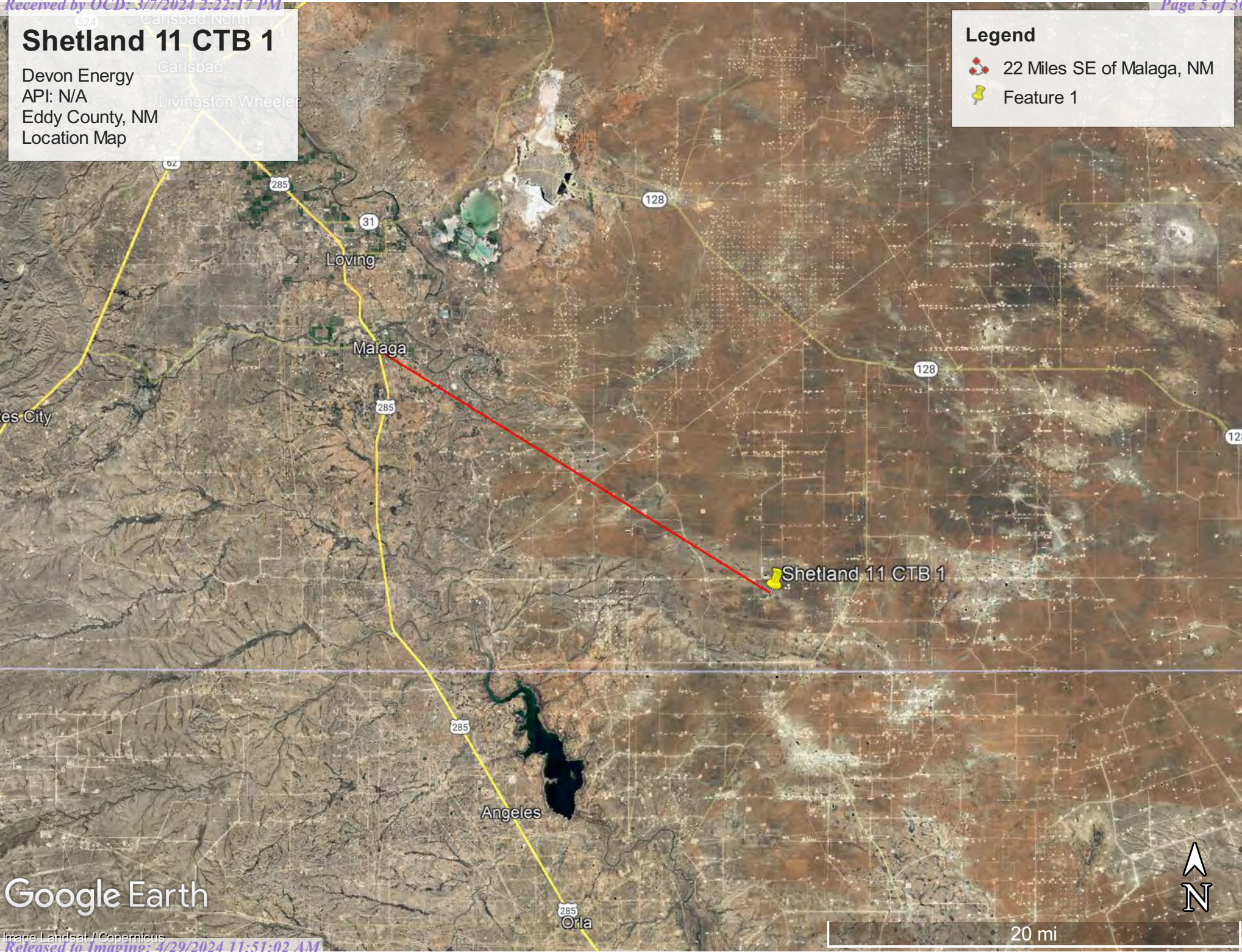
- 1-Location Map
- 2-Topographic Map
- 3-Karst Map
- 4-Site Map

Shetland 11 CTB 1

Devon Energy
API: N/A
Eddy County, NM
Location Map

Legend

-  22 Miles SE of Malaga, NM
-  Feature 1





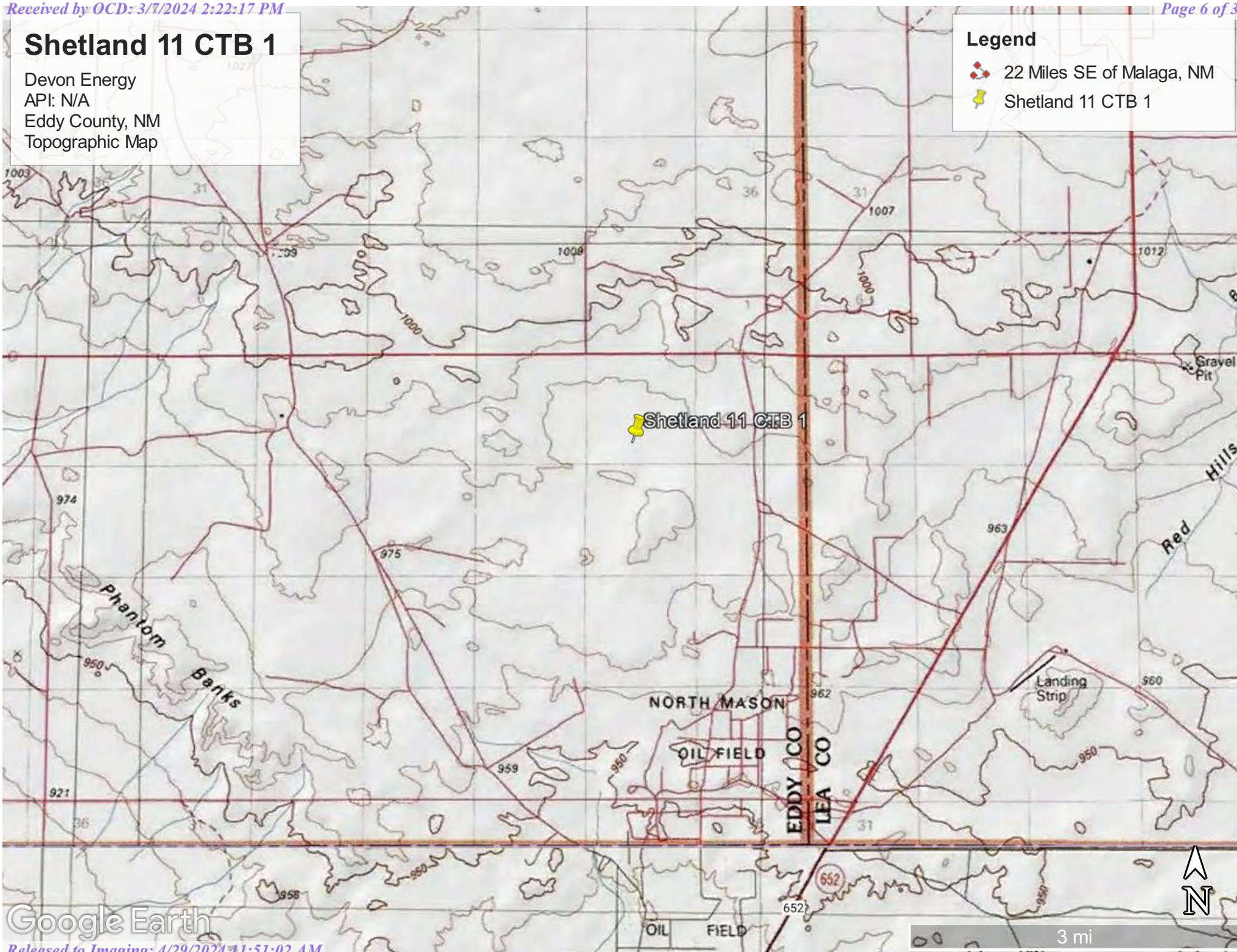
Google Earth

Shetland 11 CTB 1

Devon Energy
API: N/A
Eddy County, NM
Topographic Map

Legend

-  22 Miles SE of Malaga, NM
-  Shetland 11 CTB 1



Google Earth

Shetland 11 CTB 1

Devon Energy
API: N/A
Eddy County, NM
Karst Map

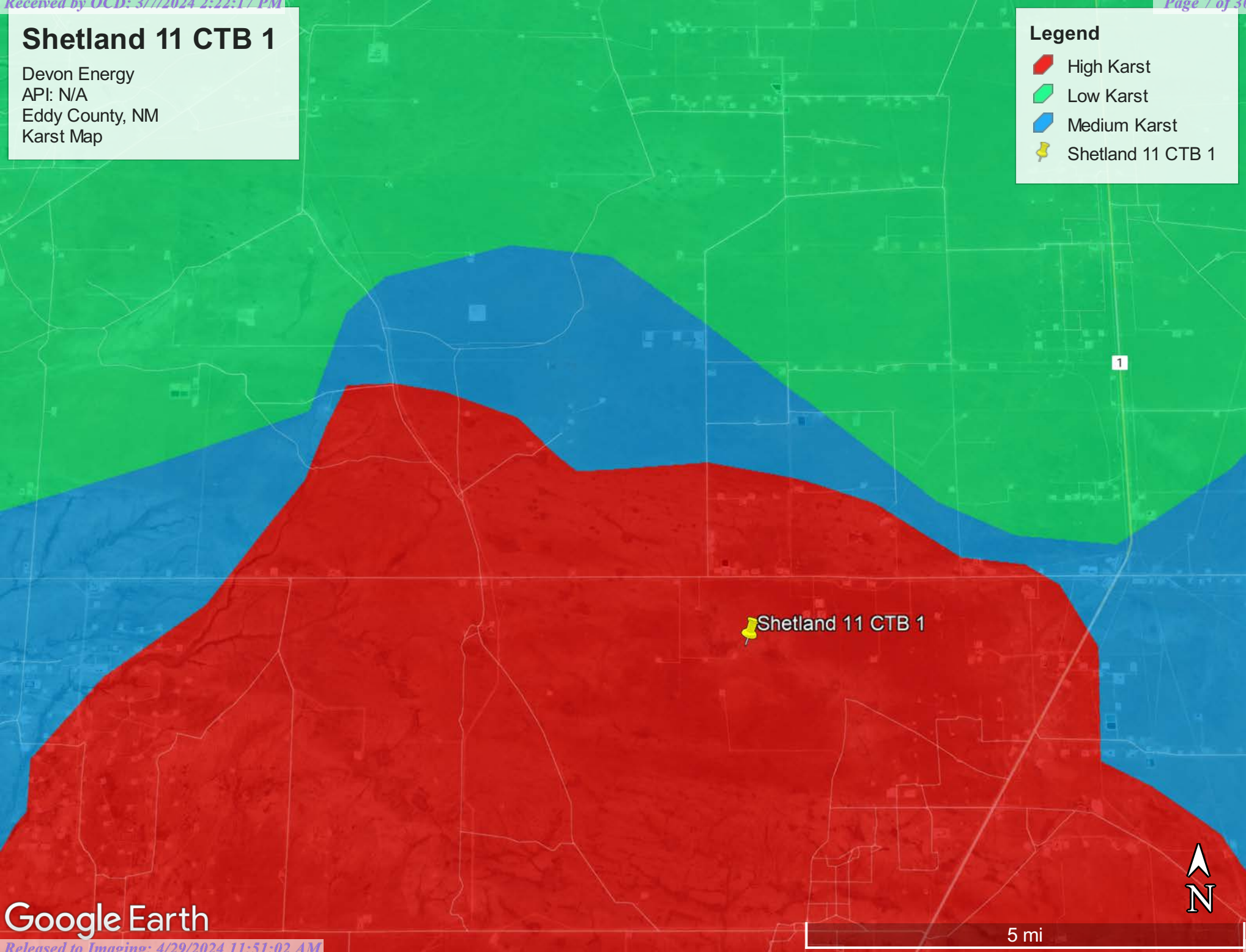
Legend

High Karst

Low Karst

Medium Karst


Shetland 11 CTB 1

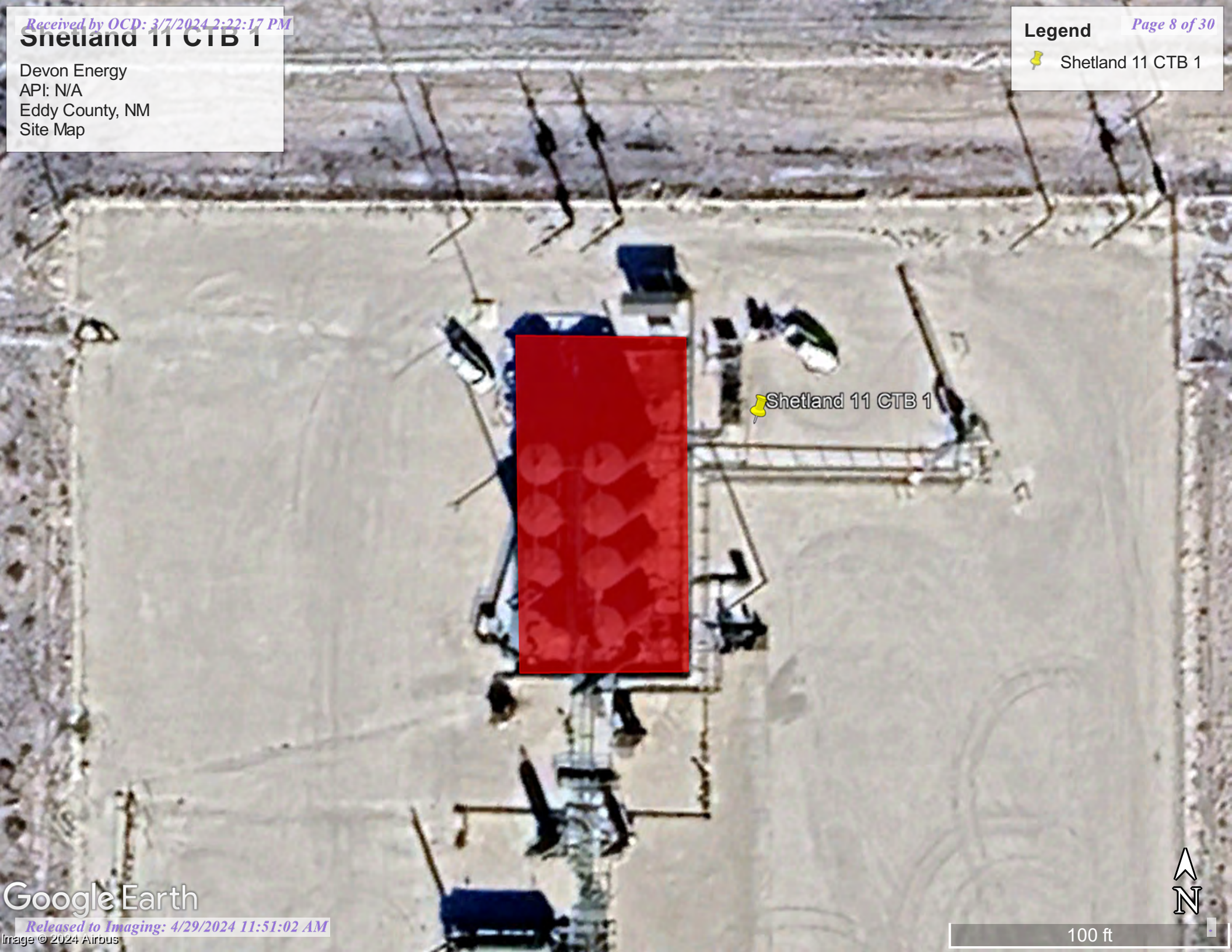


Shetland 11 CTB 1

Devon Energy
API: N/A
Eddy County, NM
Site Map

Legend

 Shetland 11 CTB 1



Google Earth

Released to Imaging: 4/29/2024 11:51:02 AM

Image © 2024 Airbus

100 ft



Pima Environmental Services

Appendix A

Water Surveys:

OSE

USGS

Wetlands Map



New Mexico Office of the State Engineer

Water Column/Average Depth to Water

(A CLW##### in the POD suffix indicates the POD has been replaced & no longer serves a water right file.)

(R=POD has been replaced,
O=orphaned,
C=the file is closed)

(quarters are 1=NW 2=NE 3=SW 4=SE)

(quarters are smallest to largest) (NAD83 UTM in meters)

(In feet)

POD Number	Code	POD Sub-basin	County	Q 64	Q 16	Q 4	Sec	Tws	Rng	X	Y	Distance	DepthWell	DepthWater	Water Column
C 04637 POD1		CUB	ED	4	4	3	02	26S	31E	618068	3548423	1428	51		
C 04700 POD1		CUB	ED	2	1	2	10	26S	31E	616736	3548154	1721			
C 02090		C	ED		4	4	01	26S	31E	620329	3548533*	2782	350	335	15
C 03639 POD1		CUB	ED	3	4	2	01	26S	31E	620168	3549279	3142	700	365	335
C 04209 POD2		C	LE	2	3	3	06	26S	32E	620818	3548657	3262	340	155	185
C 04256 POD1		C	ED	4	4	2	01	26S	31E	620384	3549257	3278	666	340	326
C 03554 POD2		CUB	ED	2	2	4	01	26S	31E	620527	3549105	3283	650	355	295
C 04209 POD1		CUB	LE	2	3	3	06	26S	32E	620903	3548619	3317	360	155	205
C 03554 POD1		CUB	ED	2	1	4	01	26S	31E	620547	3549148	3327	630	300	330
C 03829 POD1		CUB	LE	3	3	1	06	26S	32E	620628	3549186	3413	646	350	296
C 01777		C	ED				08	26S	31E	613245	3547409*	4782	325	300	25

Average Depth to Water: **295 feet**
 Minimum Depth: **155 feet**
 Maximum Depth: **365 feet**

Record Count: 11

UTMNAD83 Radius Search (in meters):

Easting (X): 618009.47

Northing (Y): 3546996.69

Radius: 5000

*UTM location was derived from PLSS - see Help

The data is furnished by the NMOSE/ISC and is accepted by the recipient with the expressed understanding that the OSE/ISC make no warranties, expressed or implied, concerning the accuracy, completeness, reliability, usability, or suitability for any particular purpose of the data.

9/28/23 11:57 AM

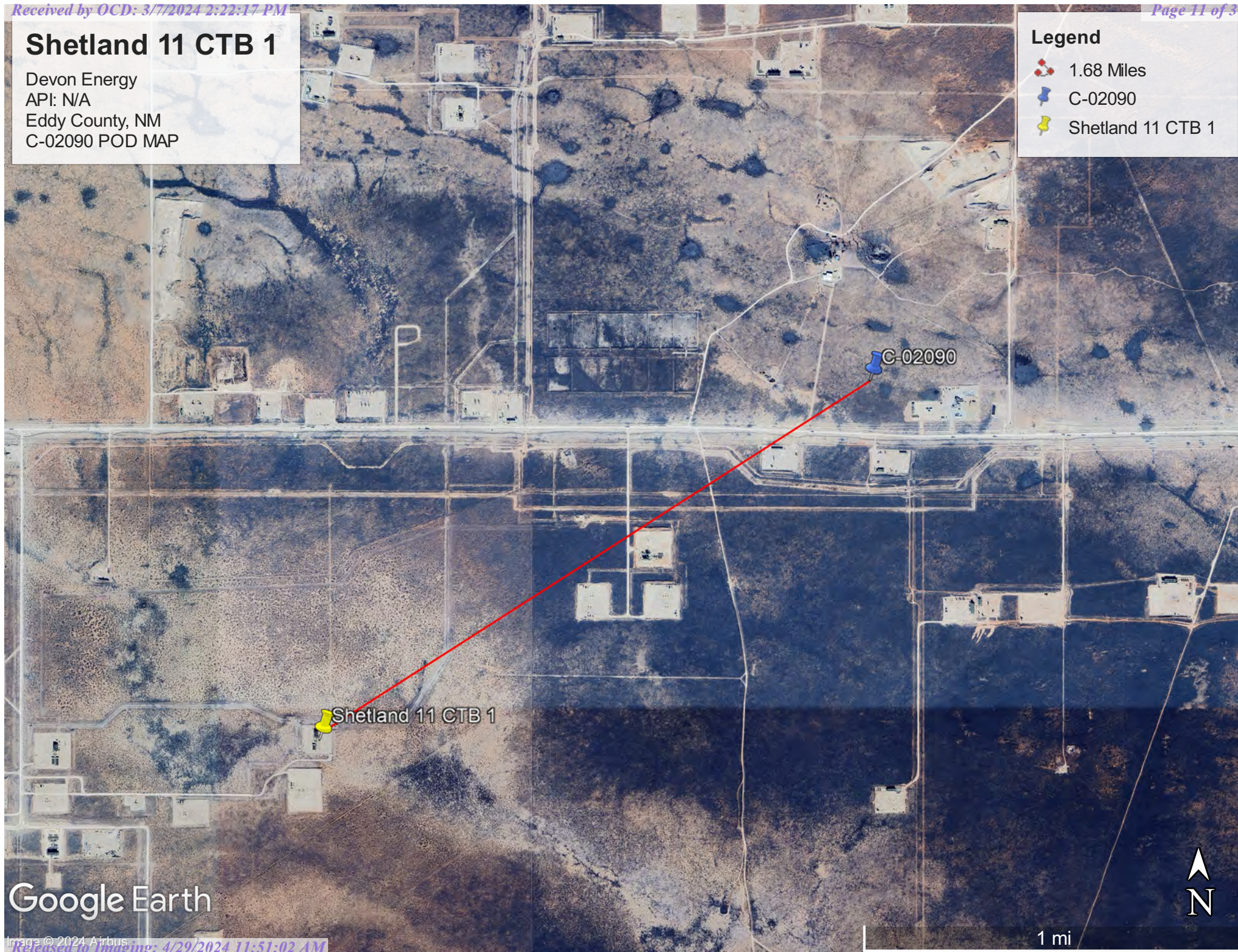
WATER COLUMN/ AVERAGE DEPTH TO
WATER

Shetland 11 CTB 1

Devon Energy
API: N/A
Eddy County, NM
C-02090 POD MAP

Legend

- 1.68 Miles
- C-02090
- Shetland 11 CTB 1



Google Earth



[USGS Home](#)
[Contact USGS](#)
[Search USGS](#)

National Water Information System: Web Interface

USGS Water Resources

Data Category:

Groundwater

Geographic Area:

United States

GO

Click to hide News Bulletins

- Explore the *NEW* [USGS National Water Dashboard](#) interactive map to access real-time water data from over 13,500 stations nationwide.
- [Full News](#) 

Groundwater levels for the Nation

 Important: [Next Generation Monitoring Location Page](#)

Search Results -- 1 sites found

site_no list =

- 320330103462401

Minimum number of levels = 1

[Save file of selected sites](#) to local disk for future upload

USGS 320330103462401 26S.31E.08.321434

Available data for this site

Groundwater: Field measurements

GO

Eddy County, New Mexico

Hydrologic Unit Code 13070001

Latitude 32°03'30", Longitude 103°46'24" NAD27

Land-surface elevation 3,251 feet above NAVD88

The depth of the well is 380 feet below land surface.

This well is completed in the Pecos River Basin alluvial aquifer (N100PCSRVR) national aquifer.

This well is completed in the Santa Rosa Sandstone (231SNRS) local aquifer.

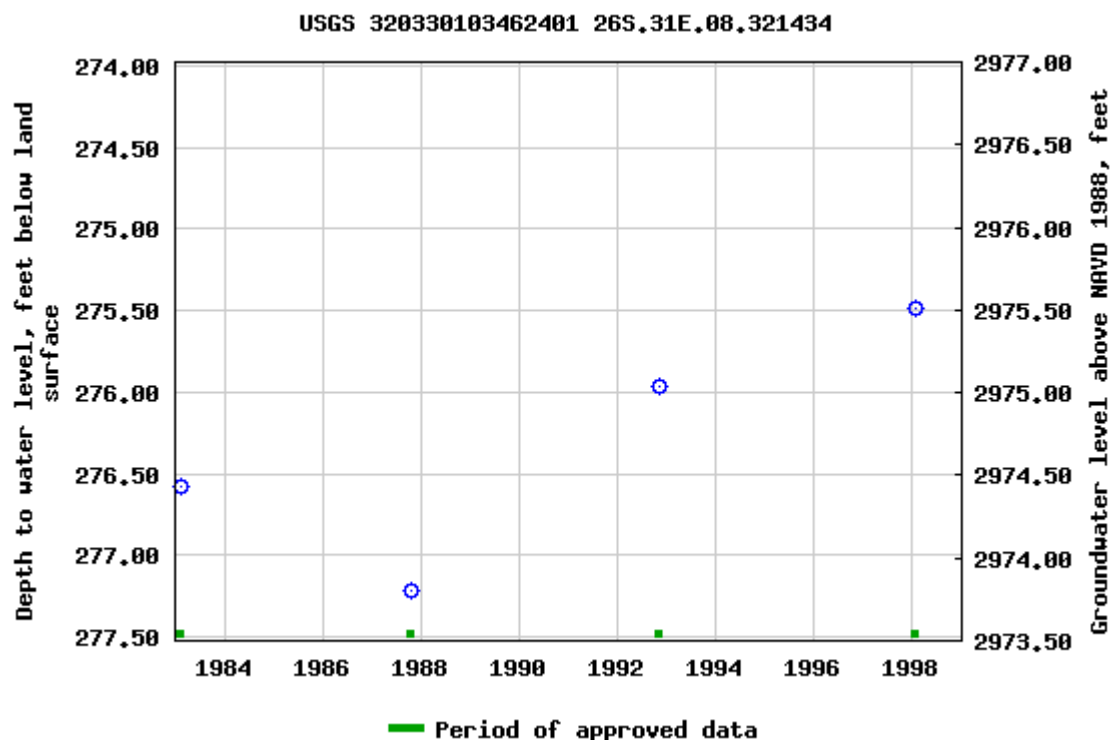
Output formats

[Table of data](#)

[Tab-separated data](#)

[Graph of data](#)

[Reselect period](#)



Breaks in the plot represent a gap of at least one year between field measurements.

[Download a presentation-quality graph](#)

[Questions or Comments](#)

[Automated retrievals](#)

[Help](#)

[Data Tips](#)

[Explanation of terms](#)

[Subscribe for system changes](#)

[News](#)

[Accessibility](#)

[FOIA](#)

[Privacy](#)

[Policies and Notices](#)

[U.S. Department of the Interior](#) | [U.S. Geological Survey](#)

Title: Groundwater for USA: Water Levels

URL: <https://nwis.waterdata.usgs.gov/nwis/gwlevels?>



Page Contact Information: [USGS Water Data Support Team](#)

Page Last Modified: 2023-09-28 13:54:57 EDT

0.56 0.48 nadww01

Shetland 11 CTB 1

Devon Energy
API#: N/A
Eddy County, NM
USGS 320134103384101

Legend

- 4.25 Miles
- Shetland 11 CTB 1
- USGS 320134103384101

Shetland 11 CTB 1

USGS 320134103384101

Google Earth

Image © 2023 Maxar Technologies

Image © 2023 CNES / Airbus
Released to Imaging: 4/29/2024 11:51:02 AM


2 mi




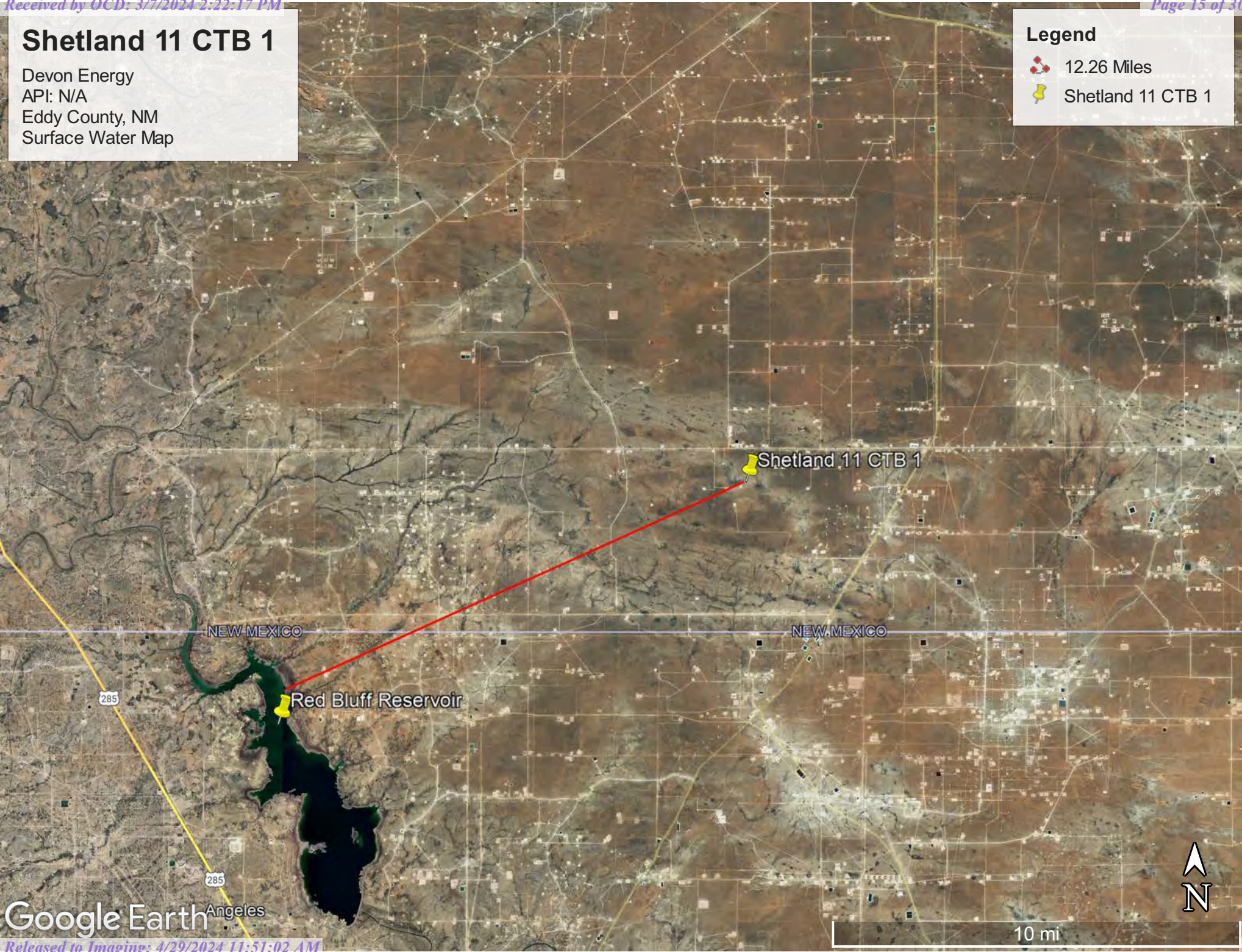
Shetland 11 CTB 1

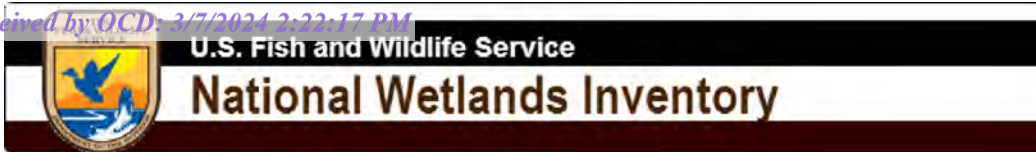
Devon Energy
API: N/A
Eddy County, NM
Surface Water Map

Legend

 12.26 Miles

 Shetland 11 CTB 1





Wetlands Map



September 28, 2023

Wetlands

- Estuarine and Marine Deepwater
- Estuarine and Marine Wetland

- Freshwater Emergent Wetland
- Freshwater Forested/Shrub Wetland
- Freshwater Pond

- Lake
- Other
- Riverine

This map is for general reference only. The US Fish and Wildlife Service is not responsible for the accuracy or currentness of the base data shown on this map. All wetlands related data should be used in accordance with the layer metadata found on the Wetlands Mapper web site.



Pima Environmental Services

Appendix B

48-Hour Notification



Gio PimaOil <gio@pimaoil.com>

Fwd: [EXTERNAL] The Oil Conservation Division (OCD) has accepted the application, Application ID: 318178

1 message

Woodall, Dale <Dale.Woodall@dvni.com>

Tue, Feb 27, 2024 at 1:06 PM

To: Gio PimaOil <gio@pimaoil.com>, Lynsey Pima Oil <lynsey@pimaoil.com>

Dale Woodall
Environmental Professional
Hobbs, NM 88240
Office: 575-748-1838
Mobile: 405-318-4697

From: OCDOnline@state.nm.us <OCDOnline@state.nm.us>**Sent:** Tuesday, February 27, 2024 1:05:09 PM**To:** Woodall, Dale <Dale.Woodall@dvni.com>**Subject:** [EXTERNAL] The Oil Conservation Division (OCD) has accepted the application, Application ID: 318178

To whom it may concern (c/o Dale Woodall for DEVON ENERGY PRODUCTION COMPANY, LP),

The OCD has received the submitted *Notification for Liner Inspection for a Release* (C-141L), for incident ID (n#) nAPP2320752842.

The liner inspection is expected to take place:

When: 02/29/2024 @ 08:15**Where:** D-11-26S-31E 15 FSL 505 FWL (32.053023,-103.749823)**Additional Information:** Andrew Franco 806-200-0054

Additional Instructions: D-11-26S-31E, (32.053023, -103.749823 NAD83) From the intersection of Orla Rd (C1) and Pipeland Rd, travel west on Pipeline Rd for 5.21 miles, turn South on lease road for 0.91 of a mile, turn east on lease road for 0.81 miles, arriving to location on the left.

An OCD representative may be available onsite at the date and time reported. In the absence or presence of an OCD representative, liner inspection pursuant to 19.15.29.11.A(5)(a) NMAC is required. Should there be a change in the scheduled date and time of the sampling event, then another notification should be resubmitted through OCD permitting as soon as possible.

- **Failure to notify the OCD of liner inspections including any changes in date/time per the requirements of 19.15.29.11.A(5)(a)(ii) NMAC, may result in the inspection not being accepted.**

If you have any questions regarding this application, or don't know why you have received this email, please contact us.

New Mexico Energy, Minerals and Natural Resources Department

1220 South St. Francis Drive
Santa Fe, NM 87505

Confidentiality Warning: This message and any attachments are intended only for the use of the intended recipient(s), are confidential, and may be privileged. If you are not the intended recipient, you are hereby notified that any review, retransmission, conversion to hard copy, copying, circulation or other use of all or any portion of this message and any attachments is strictly prohibited. If you are not the intended recipient, please notify the sender immediately by return e-mail, and delete this message and any attachments from your system.



Pima Environmental Services

Appendix C

Liner Inspection Form

Photographic Documentation



Pima Environmental Services, LLC

Liner Inspection FormCompany Name: Devon EnergySite: Shetland 11 CTB 1Lat/Long: 32.053023, -103.749823NMOCD Incident ID
& Incident Date: NAPP2320752842 7/26/20232-Day Notification
Sent: via Email by Dale Woodall on OCD portal 2/27/2024Inspection Date: 2/29/2024

Liner Type: Earthen w/liner Earthen no liner Polystar

Steel w/poly liner Steel w/spray epoxy No Liner

Other: _____

Visualization	Yes	No	Comments
Is there a tear in the liner?		X	
Are there holes in the liner?		X	
Is the liner retaining any fluids?		X	
Does the liner have integrity to contain a leak?	X		

Comments: _____

Inspector Name: Andrew Franco Inspector Signature: Andrew Franco



SITE PHOTOGRAPHS

DEVON ENERGY

Shetland 11 CTB 1

Liner Inspection









District I
1625 N. French Dr., Hobbs, NM 88240
Phone:(575) 393-6161 Fax:(575) 393-0720
District II
811 S. First St., Artesia, NM 88210
Phone:(575) 748-1283 Fax:(575) 748-9720
District III
1000 Rio Brazos Rd., Aztec, NM 87410
Phone:(505) 334-6178 Fax:(505) 334-6170
District IV
1220 S. St Francis Dr., Santa Fe, NM 87505
Phone:(505) 476-3470 Fax:(505) 476-3462

State of New Mexico
Energy, Minerals and Natural Resources
Oil Conservation Division
1220 S. St Francis Dr.
Santa Fe, NM 87505

QUESTIONS

Action 321317

QUESTIONS

Operator: DEVON ENERGY PRODUCTION COMPANY, LP 333 West Sheridan Ave. Oklahoma City, OK 73102	OGRID:
	6137
	Action Number:
	321317
Action Type: [C-141] Remediation Closure Request C-141 (C-141-v-Closure)	

QUESTIONS

Prerequisites	
Incident ID (n#)	nAPP2320752842
Incident Name	NAPP2320752842 SHETLAND 11 CTB 1 @ 0
Incident Type	Produced Water Release
Incident Status	Remediation Closure Report Received
Incident Facility	[fAPP2123649550] SHETLAND 11 CTB 1

Location of Release Source	
Please answer all the questions in this group.	
Site Name	SHETLAND 11 CTB 1
Date Release Discovered	07/26/2023
Surface Owner	Federal

Incident Details	
Please answer all the questions in this group.	
Incident Type	Produced Water Release
Did this release result in a fire or is the result of a fire	No
Did this release result in any injuries	No
Has this release reached or does it have a reasonable probability of reaching a watercourse	No
Has this release endangered or does it have a reasonable probability of endangering public health	No
Has this release substantially damaged or will it substantially damage property or the environment	No
Is this release of a volume that is or may with reasonable probability be detrimental to fresh water	No

Nature and Volume of Release	
Material(s) released, please answer all that apply below. Any calculations or specific justifications for the volumes provided should be attached to the follow-up C-141 submission.	
Crude Oil Released (bbls) Details	Not answered.
Produced Water Released (bbls) Details	Cause: Equipment Failure Pump Produced Water Released: 12 BBL Recovered: 12 BBL Lost: 0 BBL.
Is the concentration of chloride in the produced water >10,000 mg/l	No
Condensate Released (bbls) Details	Not answered.
Natural Gas Vented (Mcf) Details	Not answered.
Natural Gas Flared (Mcf) Details	Not answered.
Other Released Details	Not answered.
Are there additional details for the questions above (i.e. any answer containing Other, Specify, Unknown, and/or Fire, or any negative lost amounts)	Assistant Foreman was called about a possible leak on water side of transfer pumps. LO found pin hole in strain pot for water transfer pump and bad flange from pump to discharge line. LO shut valve up and down stream off of pump and strainer basket. 12 bbls released inside containment. 121 bbls recovered.

District I

1625 N. French Dr., Hobbs, NM 88240
Phone:(575) 393-6161 Fax:(575) 393-0720

District II

811 S. First St., Artesia, NM 88210
Phone:(575) 748-1283 Fax:(575) 748-9720

District III

1000 Rio Brazos Rd., Aztec, NM 87410
Phone:(505) 334-6178 Fax:(505) 334-6170

District IV

1220 S. St Francis Dr., Santa Fe, NM 87505
Phone:(505) 476-3470 Fax:(505) 476-3462

State of New Mexico
Energy, Minerals and Natural Resources
Oil Conservation Division
1220 S. St Francis Dr.
Santa Fe, NM 87505

QUESTIONS, Page 2

Action 321317

QUESTIONS (continued)

Operator: DEVON ENERGY PRODUCTION COMPANY, LP 333 West Sheridan Ave. Oklahoma City, OK 73102	OGRID:	6137
	Action Number:	321317
	Action Type:	[C-141] Remediation Closure Request C-141 (C-141-v-Closure)

QUESTIONS

Nature and Volume of Release (continued)	
Is this a gas only submission (i.e. only significant Mcf values reported)	No, according to supplied volumes this does not appear to be a "gas only" report.
Was this a major release as defined by Subsection A of 19.15.29.7 NMAC	No
Reasons why this would be considered a submission for a notification of a major release	Unavailable.
With the implementation of the 19.15.27 NMAC (05/25/2021), venting and/or flaring of natural gas (i.e. gas only) are to be submitted on the C-129 form.	

Initial Response

The responsible party must undertake the following actions immediately unless they could create a safety hazard that would result in injury.

The source of the release has been stopped	True
The impacted area has been secured to protect human health and the environment	True
Released materials have been contained via the use of berms or dikes, absorbent pads, or other containment devices	True
All free liquids and recoverable materials have been removed and managed appropriately	True
If all the actions described above have not been undertaken, explain why	Not answered.

Per Paragraph (4) of Subsection B of 19.15.29.8 NMAC the responsible party may commence remediation immediately after discovery of a release. If remediation has begun, please prepare and attach a narrative of actions to date in the follow-up C-141 submission. If remedial efforts have been successfully completed or if the release occurred within a lined containment area (see Subparagraph (a) of Paragraph (5) of Subsection A of 19.15.29.11 NMAC), please prepare and attach all information needed for closure evaluation in the follow-up C-141 submission.

I hereby certify that the information given above is true and complete to the best of my knowledge and understand that pursuant to OCD rules and regulations all operators are required to report and/or file certain release notifications and perform corrective actions for releases which may endanger public health or the environment. The acceptance of a C-141 report by the OCD does not relieve the operator of liability should their operations have failed to adequately investigate and remediate contamination that pose a threat to groundwater, surface water, human health or the environment. In addition, OCD acceptance of a C-141 report does not relieve the operator of responsibility for compliance with any other federal, state, or local laws and/or regulations.

I hereby agree and sign off to the above statement	Name: Dale Woodall Title: EHS Professional Email: Dale.Woodall@dmv.com Date: 03/07/2024
--	--

District I

1625 N. French Dr., Hobbs, NM 88240
Phone:(575) 393-6161 Fax:(575) 393-0720

District II

811 S. First St., Artesia, NM 88210
Phone:(575) 748-1283 Fax:(575) 748-9720

District III

1000 Rio Brazos Rd., Aztec, NM 87410
Phone:(505) 334-6178 Fax:(505) 334-6170

District IV

1220 S. St Francis Dr., Santa Fe, NM 87505
Phone:(505) 476-3470 Fax:(505) 476-3462

State of New Mexico
Energy, Minerals and Natural Resources
Oil Conservation Division
1220 S. St Francis Dr.
Santa Fe, NM 87505

QUESTIONS, Page 3

Action 321317

QUESTIONS (continued)

Operator: DEVON ENERGY PRODUCTION COMPANY, LP 333 West Sheridan Ave. Oklahoma City, OK 73102	OGRID:	6137
	Action Number:	321317
	Action Type:	[C-141] Remediation Closure Request C-141 (C-141-v-Closure)

QUESTIONS**Site Characterization**

Please answer all the questions in this group (only required when seeking remediation plan approval and beyond). This information must be provided to the appropriate district office no later than 90 days after the release discovery date.

What is the shallowest depth to groundwater beneath the area affected by the release in feet below ground surface (ft bgs)	Between 100 and 500 (ft.)
What method was used to determine the depth to ground water	NM OSE iWaters Database Search
Did this release impact groundwater or surface water	No
What is the minimum distance, between the closest lateral extents of the release and the following surface areas:	
A continuously flowing watercourse or any other significant watercourse	Greater than 5 (mi.)
Any lakebed, sinkhole, or playa lake (measured from the ordinary high-water mark)	Greater than 5 (mi.)
An occupied permanent residence, school, hospital, institution, or church	Greater than 5 (mi.)
A spring or a private domestic fresh water well used by less than five households for domestic or stock watering purposes	Greater than 5 (mi.)
Any other fresh water well or spring	Greater than 5 (mi.)
Incorporated municipal boundaries or a defined municipal fresh water well field	Greater than 5 (mi.)
A wetland	Between ½ and 1 (mi.)
A subsurface mine	Greater than 5 (mi.)
An (non-karst) unstable area	Greater than 5 (mi.)
Categorize the risk of this well / site being in a karst geology	High
A 100-year floodplain	Greater than 5 (mi.)
Did the release impact areas not on an exploration, development, production, or storage site	No

Remediation Plan

Please answer all the questions that apply or are indicated. This information must be provided to the appropriate district office no later than 90 days after the release discovery date.

Requesting a remediation plan approval with this submission	Yes
Attach a comprehensive report demonstrating the lateral and vertical extents of soil contamination associated with the release have been determined, pursuant to 19.15.29.11 NMAC and 19.15.29.13 NMAC.	
Have the lateral and vertical extents of contamination been fully delineated	Yes
Was this release entirely contained within a lined containment area	Yes
Per Subsection B of 19.15.29.11 NMAC unless the site characterization report includes completed efforts at remediation, the report must include a proposed remediation plan in accordance with 19.15.29.12 NMAC, which includes the anticipated timelines for beginning and completing the remediation.	
On what estimated date will the remediation commence	02/29/2024
On what date will (or did) the final sampling or liner inspection occur	02/29/2024
On what date will (or was) the remediation complete(d)	02/29/2024
What is the estimated surface area (in square feet) that will be remediated	0
What is the estimated volume (in cubic yards) that will be remediated	0
These estimated dates and measurements are recognized to be the best guess or calculation at the time of submission and may (be) change(d) over time as more remediation efforts are completed.	
The OCD recognizes that proposed remediation measures may have to be minimally adjusted in accordance with the physical realities encountered during remediation. If the responsible party has any need to significantly deviate from the remediation plan proposed, then it should consult with the division to determine if another remediation plan submission is required.	

District I

1625 N. French Dr., Hobbs, NM 88240
Phone:(575) 393-6161 Fax:(575) 393-0720

District II

811 S. First St., Artesia, NM 88210
Phone:(575) 748-1283 Fax:(575) 748-9720

District III

1000 Rio Brazos Rd., Aztec, NM 87410
Phone:(505) 334-6178 Fax:(505) 334-6170

District IV

1220 S. St Francis Dr., Santa Fe, NM 87505
Phone:(505) 476-3470 Fax:(505) 476-3462

State of New Mexico
Energy, Minerals and Natural Resources
Oil Conservation Division
1220 S. St Francis Dr.
Santa Fe, NM 87505

QUESTIONS, Page 4

Action 321317

QUESTIONS (continued)

Operator: DEVON ENERGY PRODUCTION COMPANY, LP 333 West Sheridan Ave. Oklahoma City, OK 73102	OGRID:	6137
	Action Number:	321317
	Action Type:	[C-141] Remediation Closure Request C-141 (C-141-v-Closure)

QUESTIONS**Remediation Plan (continued)**

Please answer all the questions that apply or are indicated. This information must be provided to the appropriate district office no later than 90 days after the release discovery date.

This remediation will (or is expected to) utilize the following processes to remediate / reduce contaminants:

(Select all answers below that apply.)

Is (or was) there affected material present needing to be removed	Yes
Is (or was) there a power wash of the lined containment area (to be) performed	Yes
OTHER (Non-listed remedial process)	No

Per Subsection B of 19.15.29.11 NMAC unless the site characterization report includes completed efforts at remediation, the report must include a proposed remediation plan in accordance with 19.15.29.12 NMAC, which includes the anticipated timelines for beginning and completing the remediation.

I hereby certify that the information given above is true and complete to the best of my knowledge and understand that pursuant to OCD rules and regulations all operators are required to report and/or file certain release notifications and perform corrective actions for releases which may endanger public health or the environment. The acceptance of a C-141 report by the OCD does not relieve the operator of liability should their operations have failed to adequately investigate and remediate contamination that pose a threat to groundwater, surface water, human health or the environment. In addition, OCD acceptance of a C-141 report does not relieve the operator of responsibility for compliance with any other federal, state, or local laws and/or regulations.

I hereby agree and sign off to the above statement	Name: Dale Woodall Title: EHS Professional Email: Dale.Woodall@dmn.com Date: 03/07/2024
--	--

The OCD recognizes that proposed remediation measures may have to be minimally adjusted in accordance with the physical realities encountered during remediation. If the responsible party has any need to significantly deviate from the remediation plan proposed, then it should consult with the division to determine if another remediation plan submission is required.

District I

1625 N. French Dr., Hobbs, NM 88240
Phone:(575) 393-6161 Fax:(575) 393-0720

District II

811 S. First St., Artesia, NM 88210
Phone:(575) 748-1283 Fax:(575) 748-9720

District III

1000 Rio Brazos Rd., Aztec, NM 87410
Phone:(505) 334-6178 Fax:(505) 334-6170

District IV

1220 S. St Francis Dr., Santa Fe, NM 87505
Phone:(505) 476-3470 Fax:(505) 476-3462

State of New Mexico
Energy, Minerals and Natural Resources
Oil Conservation Division
1220 S. St Francis Dr.
Santa Fe, NM 87505

QUESTIONS, Page 6

Action 321317

QUESTIONS (continued)

Operator: DEVON ENERGY PRODUCTION COMPANY, LP 333 West Sheridan Ave. Oklahoma City, OK 73102	OGRID:	6137
	Action Number:	321317
	Action Type:	[C-141] Remediation Closure Request C-141 (C-141-v-Closure)

QUESTIONS

Liner Inspection Information	
Last liner inspection notification (C-141L) recorded	318178
Liner inspection date pursuant to Subparagraph (a) of Paragraph (5) of Subsection A of 19.15.29.11 NMAC	02/29/2024
Was all the impacted materials removed from the liner	Yes
What was the liner inspection surface area in square feet	7388

Remediation Closure Request

Only answer the questions in this group if seeking remediation closure for this release because all remediation steps have been completed.

Requesting a remediation closure approval with this submission	Yes
Have the lateral and vertical extents of contamination been fully delineated	Yes
Was this release entirely contained within a lined containment area	Yes
What was the total surface area (in square feet) remediated	0
What was the total volume (cubic yards) remediated	0
Summarize any additional remediation activities not included by answers (above)	see report

The responsible party must attach information demonstrating they have complied with all applicable closure requirements and any conditions or directives of the OCD. This demonstration should be in the form of a comprehensive report (in .pdf format) including a scaled site map, sampling diagrams, relevant field notes, photographs of any excavation prior to backfilling, laboratory data including chain of custody documents of final sampling, and a narrative of the remedial activities. Refer to 19.15.29.12 NMAC.

I hereby certify that the information given above is true and complete to the best of my knowledge and understand that pursuant to OCD rules and regulations all operators are required to report and/or file certain release notifications and perform corrective actions for releases which may endanger public health or the environment. The acceptance of a C-141 report by the OCD does not relieve the operator of liability should their operations have failed to adequately investigate and remediate contamination that pose a threat to groundwater, surface water, human health or the environment. In addition, OCD acceptance of a C-141 report does not relieve the operator of responsibility for compliance with any other federal, state, or local laws and/or regulations. The responsible party acknowledges they must substantially restore, reclaim, and re-vegetate the impacted surface area to the conditions that existed prior to the release or their final land use in accordance with 19.15.29.13 NMAC including notification to the OCD when reclamation and re-vegetation are complete.

I hereby agree and sign off to the above statement	Name: Dale Woodall Title: EHS Professional Email: Dale.Woodall@dmn.com Date: 03/07/2024
--	--

District I
1625 N. French Dr., Hobbs, NM 88240
Phone:(575) 393-6161 Fax:(575) 393-0720
District II
811 S. First St., Artesia, NM 88210
Phone:(575) 748-1283 Fax:(575) 748-9720
District III
1000 Rio Brazos Rd., Aztec, NM 87410
Phone:(505) 334-6178 Fax:(505) 334-6170
District IV
1220 S. St Francis Dr., Santa Fe, NM 87505
Phone:(505) 476-3470 Fax:(505) 476-3462

State of New Mexico
Energy, Minerals and Natural Resources
Oil Conservation Division
1220 S. St Francis Dr.
Santa Fe, NM 87505

CONDITIONS

Action 321317

CONDITIONS

Operator: DEVON ENERGY PRODUCTION COMPANY, LP 333 West Sheridan Ave. Oklahoma City, OK 73102	OGRID: 6137
	Action Number: 321317
	Action Type: [C-141] Remediation Closure Request C-141 (C-141-v-Closure)

CONDITIONS

Created By	Condition	Condition Date
rhamlet	We have received your Remediation Closure Report for Incident #NAPP2320752842 SHETLAND 11 CTB 1, thank you. This Remediation Closure Report is approved.	4/29/2024