

***** LIQUID SPILLS - VOLUME CALCULATIONS *****

Location of spill: Goodnight - Blueberry Facility Date of Spill: 4/3/2024

If the leak/spill is associated with production equipment, i.e. - wellhead, stuffing box, flowline, tank battery, production vessel, transfer pump, or storage tank place an "X" here: ☒

Input Data:

If spill volumes from measurement, i.e. metering, tank volumes, etc. are known enter the volumes here: OIL: 0.0000 BBL WATER: 0.0000 BBL
If "known" spill volumes are given, input data for the following "Area Calculations" is optional. The above will override the calculated volumes.

Total Area Calculations					Standing Liquid Calculations				
Total Surface Area	width	length	wet soil depth	oil (%)	Standing Liquid Area	width	length	liquid depth	oil (%)
Rectangle Area #1	29 ft X	16 ft X	4.00 in	100%	Rectangle Area #1	0 ft X	0 ft X	0 in	0%
Rectangle Area #2	26 ft X	26 ft X	1.00 in	100%	Rectangle Area #2	0 ft X	0 ft X	0 in	0%
Rectangle Area #3	0 ft X	0 ft X	0.00 in	0%	Rectangle Area #3	0 ft X	0 ft X	0 in	0%
Rectangle Area #4	0 ft X	0 ft X	0.00 in	0%	Rectangle Area #4	0 ft X	0 ft X	0 in	0%
Rectangle Area #5	0 ft X	0 ft X	0.00 in	0%	Rectangle Area #5	0 ft X	0 ft X	0 in	0%
Rectangle Area #6	0 ft X	0 ft X	0.00 in	0%	Rectangle Area #6	0 ft X	0 ft X	0 in	0%
Rectangle Area #7	0 ft X	0 ft X	0.00 in	0%	Rectangle Area #7	0 ft X	0 ft X	0 in	0%
Rectangle Area #8	0 ft X	0 ft X	0.00 in	0%	Rectangle Area #8	0 ft X	0 ft X	0 in	0%

okay

production system leak - DAILY PRODUCTION DATA REQUIRED

Average Daily Production: Oil BBL Water 0 BBL
Did leak occur before the separator?: ☐ YES ☒ N/A (place an "X")

Amount of Free Liquid Recovered: BBL okay Percentage of Oil in Free Liquid Recovered: 0% (percentage)

Liquid holding factor *: 0.14 gal per gal Use the following when the spill wets the grains of the soil. Use the following when the liquid completely fills the pore space of the soil:
* sand = .08 gallon liquid per gallon volume of soil. Occurs when the spill soaked soil is contained by barriers, natural (or not).
* gravelly (caliche) loam = .14 gallon liquid per gallon volume of soil. * gravelly (caliche) loam = .25 gallon liquid per gallon volume of soil.
* sandy clay loam soil = .14 gallon liquid per gallon volume of soil. * sandy loam = .5 gallon liquid per gallon volume of soil.
* clay loam = .16 gallon liquid per gallon volume of soil.

Saturated Soil Volume Calculations:			Free Liquid Volume Calculations:		
Total Solid/Liquid Volume:	1,140 sq. ft.	H2O cu. ft. 211 OIL cu. ft.	Total Free Liquid Volume:	sq. ft. .000 cu. ft. .000 cu. ft.	
<u>Estimated Volumes Spilled</u>			<u>Estimated Production Volumes Lost</u>		
Liquid in Soil:	0.0 BBL	5.3 BBL	Estimated Production Spilled:	0.000000 BBL	0.000000 BBL
Free Liquid:	0.0 BBL	0.0 BBL	<u>Estimated Surface Damage</u>		
Totals:	0.000 BBL	5.261 BBL	Surface Area:	1,140 sq. ft.	
Total Liquid Spill Liquid: 0.000 BBL 5.261 BBL			Surface Area:	.0262 acre	
<u>Recovered Volumes</u>			<u>Estimated Weights, and Volumes</u>		
Estimated oil recovered:	0.0 BBL	check - okay	Saturated Soil =	23,632 lbs	211 cu.ft. 8 cu.yds.
Estimated water recovered:	0.0 BBL	check - okay	Total Liquid =	5 BBL	220.96 gallon 1,838 lbs



SITE INFORMATION

Work Plan
Blueberry HGB Roll-Off Overfill
Incident ID: NAPP2409552203
Lea County, New Mexico
Unit P Sec 24 T21S R33E
32.458926°, -103.519602°

Produced Water Release
Point of Release: Roll-Off Tank Overfill
Release Date: 04/03/24
Volume Released: 12 Barrels of Produced Water
Volume Recovered: 8 Barrels of Produced Water

CARMONA RESOURCES



Prepared for:
Goodnight Midstream
11612 Tower Road
Midland, TX 79707

Prepared by:
Carmona Resources, LLC
310 West Wall Street
Suite 500
Midland, Texas 79701



TABLE OF CONTENTS

1.0 SITE INFORMATION AND BACKGROUND

2.0 SITE CHARACTERIZATION AND GROUNDWATER

3.0 NMAC REGULATORY CRITERIA

4.0 SITE ASSESSMENT/TRENCHING ACTIVITIES

5.0 PROPOSED WORK PLAN

6.0 CONCLUSIONS

FIGURES

FIGURE 1 OVERVIEW

FIGURE 2 TOPOGRAPHIC

FIGURE 3 SAMPLE LOCATION

FIGURE 4 PROPOSED EXCAVATION

APPENDICES

APPENDIX A TABLE

APPENDIX B N.O.R. AND NMOCD CORRESPONDENCE

APPENDIX C SITE CHARACTERIZATION AND GROUNDWATER

APPENDIX D LABORATORY REPORTS



April 17, 2024

New Mexico Oil Conservation Division
1220 South St, Francis Drive
Santa Fe, NM 87505

**Re: Work Plan
Blueberry HGB Roll-Off Overfill
Goodnight Midstream
Incident # NAPP2409552203
Site Location: Unit P, S24, T21S, R33E
(Lat 32.458926°, Long -103.519602°)
Lea County, New Mexico**

To whom it may concern:

On behalf of EOG Resources, Inc. (EOG), Carmona Resources, LLC has prepared this letter to document site activities for the Blueberry HGB Roll-Off Overfill. The site is located at 32.458926°, -103.519602° within Unit P, S24, T21S, R33E, in Lea County, New Mexico (Figures 1 and 2).

1.0 Site Information and Background

Based on the initial Notice of Release (NOR) obtained from the New Mexico Oil Conservation Division (NMOCD), the release was discovered on April 3, 2024, caused by a roll-off tank overflow. It resulted in the release of twelve (12) barrels of produced water, with eight (8) barrels of produced water recovered. Refer to Figure 3. The Notice of Release form is attached in Appendix B.

2.0 Site Characterization and Groundwater

The site is located within a low karst area. Based on a review of the New Mexico Office of State Engineers and USGS databases, one known water source is within a 0.50-mile radius of the location. The well is located approximately 0.06 miles Northwest of the site in S21, T21S, R34E, and was drilled in 2021. The well has a reported depth to groundwater of 128.8' below ground surface (ft bgs). A copy of the associated Summary report is attached in Appendix C.

3.0 NMAC Regulatory Criteria

Per the NMOCD regulatory criteria established in 19.15.29.12 NMAC, the following criteria were utilized in assessing the site.

- Benzene: 10 milligrams per kilogram (mg/kg).
- Benzene, toluene, ethylbenzene, and total xylenes (BTEX): 50 mg/kg.
- TPH: 2,500 mg/kg (GRO + DRO + MRO).
- TPH: 1,000 mg/kg (GRO +DRO).
- Chloride: 20,000 mg/kg.

310 West Wall Street, Suite 500
Midland, Texas 79701
432.813.1992



4.0 Site Assessment Activities

Trenching Activities

On April 12, 2024, Carmona Resources, LLC performed site assessment activities to evaluate soil impacts stemming from the release. A total of two (2) trenches (T-1 and T-2), three (3) horizontals (H-1 through H-3), and two (2) background (Pad Background and Pasture Background) samples were advanced to depths ranging from the surface to 4' bgs within and surrounding the release area to assess the vertical and horizontal extent of the contamination. See Figure 3 for the sample locations. For chemical analysis, the soil samples were collected and placed directly into laboratory-provided sample containers, stored on ice, and transported under the proper chain-of-custody protocol to Cardinal Laboratories in Hobbs, New Mexico. The samples were analyzed for total petroleum hydrocarbons (TPH) by EPA method 8015, modified benzene, toluene, ethylbenzene, and xylenes (BTEX) by EPA Method 8021B, and chloride by EPA method 4500. The laboratory reports, including analytical methods, results, and chain-of-custody documents, are attached in Appendix D.

Vertical delineation was achieved utilizing a backhoe. See Table 1 for the analytical results.

5.0 Proposed Work Plan

Based on the analytical data and the detected TPH concentrations, Carmona Resources proposes to remediate the areas shown in Figure 4 and highlighted (blue) in Table 1.

- The area of T-1 will be excavated to a depth of 2.0' below the surface.
- The area of T-2 will be excavated to a depth of 4.0' below the surface.
- An estimated 180 cubic yards will be removed and hauled to the nearest disposal based on maximum depth.
- Impacted soil around oil and gas equipment, structures, or lines may not be removed during remediation activities due to safety concerns for the onsite personnel. However, Goodnight will excavate the impacted soil to the maximum extent possible.

6.0 Conclusions

Upon completion, a final closure report describing the remediation activities will be presented to the New Mexico Oil Conservation Division (NMOCD). If you have any questions regarding this report or need additional information, please contact us at 432-813-1992.

Sincerely,

Carmona Resources, LLC

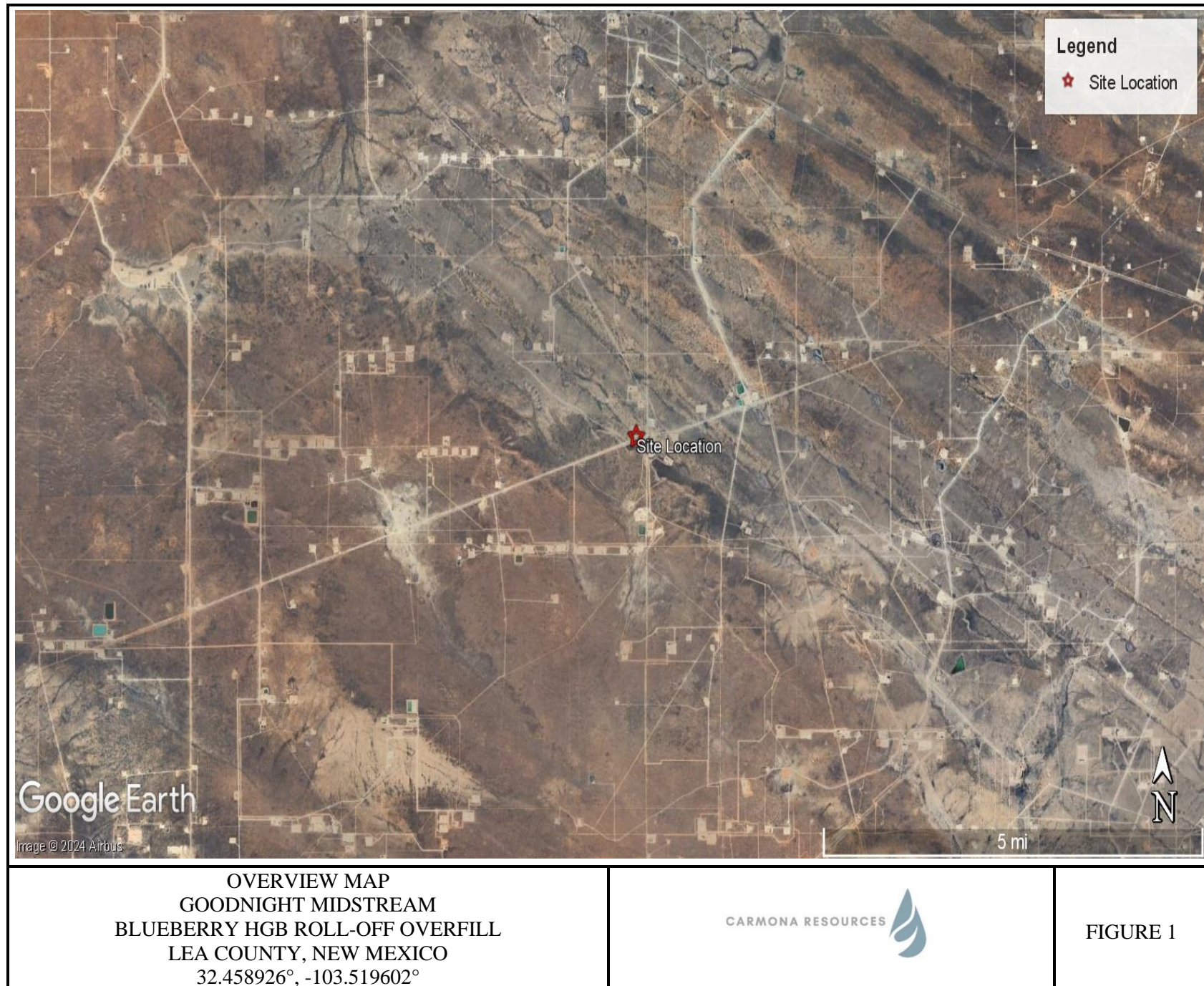
Mike Carmona
Environmental Manager

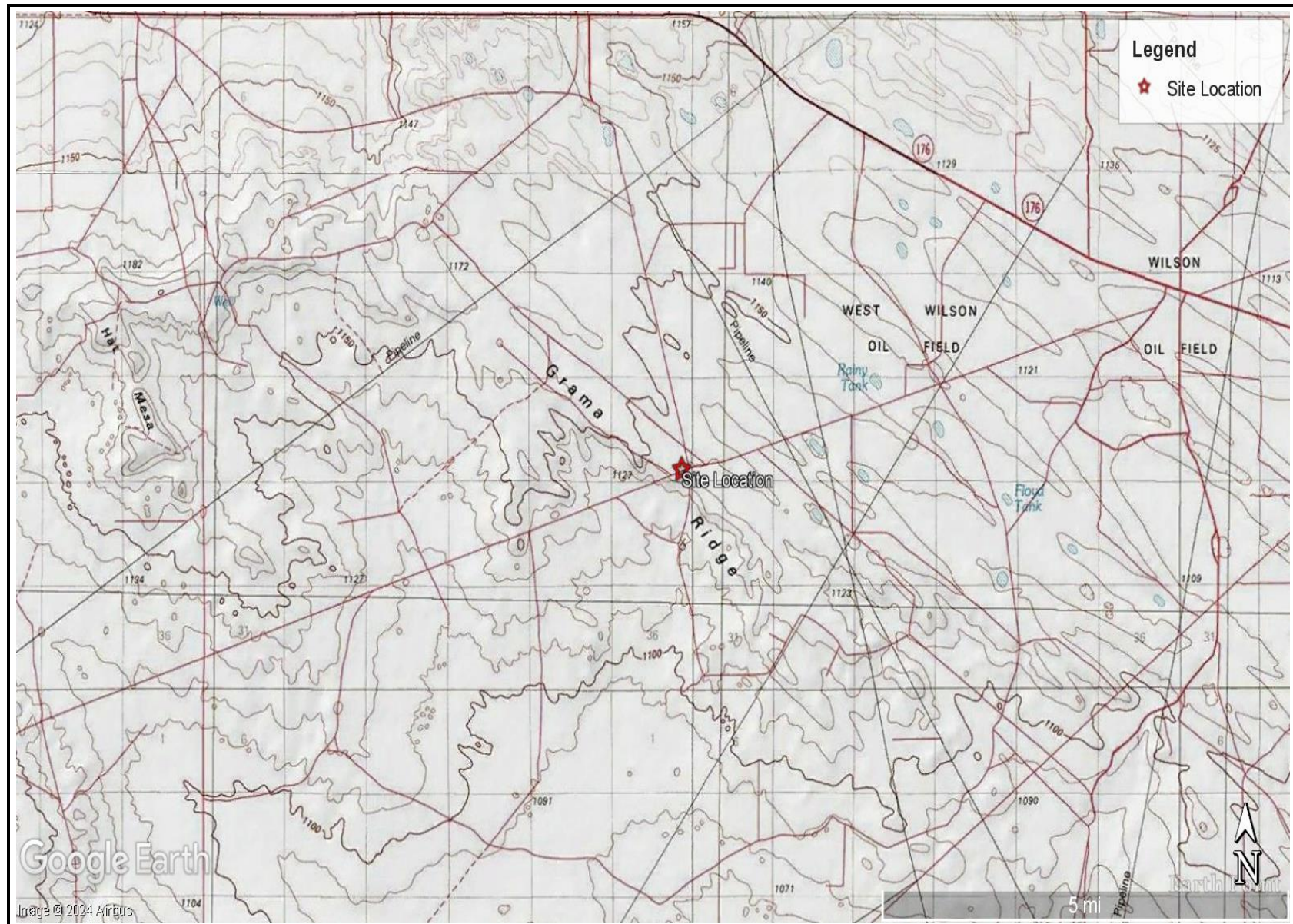
Devin Dominguez
Sr. Project Manager

FIGURES

CARMONA RESOURCES







TOPOGRAPHIC MAP
 GOODNIGHT MIDSTREAM
 BLUEBERRY HGB ROLL-OFF OVERFILL
 LEA COUNTY, NEW MEXICO
 32.458926°, -103.519602°



FIGURE 2





APPENDIX A

CARMONA RESOURCES



Table 1
Goodnight Midstream
Blueberry Facility
Lea County, New Mexico

Sample ID	Date	Depth (ft)	TPH (mg/kg)				Benzene (mg/kg)	Toluene (mg/kg)	Ethlybenzene (mg/kg)	Xylene (mg/kg)	Total BTEX (mg/kg)	Chloride (mg/kg)
			GRO	DRO	MRO	Total						
T-1	4/12/2024	1.0	1,240	8,620	1,610	11,470	9.67	51.6	18.5	48.8	128	48.0
	"	2.0	<10.0	<10.0	<10.0	<10.0	<0.050	0.091	<0.050	<0.150	<0.300	16.0
T-2	4/12/2024	1.0	2,100	12,900	2,510	17,510	16.1	55.5	17.6	50.8	140	112
	"	2.0	303	3,680	745	4,728	1.28	8.45	4.32	14.2	28.3	192
	"	3.0	<10.0	185	23.4	208	<0.050	0.072	<0.050	<0.150	<0.300	224
	"	4.0	<10.0	<10.0	<10.0	<10.0	<0.050	<0.050	<0.050	<0.150	<0.300	32.0
H-1	4/12/2024	0-5	<10.0	<10.0	<10.0	<10.0	<0.050	<0.050	<0.050	<0.150	<0.300	64.0
H-2	4/12/2024	0-5	<10.0	<10.0	<10.0	<10.0	<0.050	<0.050	<0.050	<0.150	<0.300	48.0
H-3	4/12/2024	0-5	<10.0	<10.0	<10.0	<10.0	<0.050	<0.050	<0.050	<0.150	<0.300	64.0
Pad Background	4/12/2024	0.5	<10.0	<10.0	<10.0	<10.0	<0.050	<0.050	<0.050	<0.150	<0.300	16.0
Pasture Background	4/12/2024	0.5	<10.0	<10.0	<10.0	<10.0	<0.050	<0.050	<0.050	<0.150	<0.300	64.0
Regulatory Criteria^A			1,000 mg/kg			2,500 mg/kg	10 mg/kg				50 mg/kg	20,000 mg/kg

(-) Not Analyzed

^A – Table 1 - 19.15.29 NMAC


mg/kg - milligram per kilogram

TPH- Total Petroleum Hydrocarbons

ft-feet

(T) Trenches

(H) Horizontal Sample

 Proposed Excavation

APPENDIX B

CARMONA RESOURCES



District I
1625 N. French Dr., Hobbs, NM 88240
Phone:(575) 393-6161 Fax:(575) 393-0720
District II
811 S. First St., Artesia, NM 88210
Phone:(575) 748-1283 Fax:(575) 748-9720
District III
1000 Rio Brazos Rd., Aztec, NM 87410
Phone:(505) 334-6178 Fax:(505) 334-6170
District IV
1220 S. St Francis Dr., Santa Fe, NM 87505
Phone:(505) 476-3470 Fax:(505) 476-3462

State of New Mexico
Energy, Minerals and Natural Resources
Oil Conservation Division
1220 S. St Francis Dr.
Santa Fe, NM 87505

QUESTIONS

Action 330207

QUESTIONS

Operator: GOODNIGHT MIDSTREAM PERMIAN, LLC 5910 North Central Expressway Dallas, TX 75206	OGRID: 372311
	Action Number: 330207
	Action Type: [NOTIFY] Notification Of Release (NOR)

QUESTIONS

Location of Release Source	
Please answer all the questions in this group.	
Site Name	BLUEBERRY HGB ROLL OFF OVERFILL
Date Release Discovered	04/03/2024
Surface Owner	Private

Incident Details	
Please answer all the questions in this group.	
Incident Type	Produced Water Release
Did this release result in a fire or is the result of a fire	No
Did this release result in any injuries	No
Has this release reached or does it have a reasonable probability of reaching a watercourse	No
Has this release endangered or does it have a reasonable probability of endangering public health	No
Has this release substantially damaged or will it substantially damage property or the environment	No
Is this release of a volume that is or may with reasonable probability be detrimental to fresh water	No

Nature and Volume of Release	
Material(s) released, please answer all that apply below. Any calculations or specific justifications for the volumes provided should be attached to the follow-up C-141 submission.	
Crude Oil Released (bbls) Details	Not answered.
Produced Water Released (bbls) Details	Cause: Overflow - Tank, Pit, Etc. Tank (Any) Produced Water Released: 12 BBL Recovered: 8 BBL Lost: 4 BBL.
Is the concentration of chloride in the produced water >10,000 mg/l	Yes
Condensate Released (bbls) Details	Not answered.
Natural Gas Vented (Mcf) Details	Not answered.
Natural Gas Flared (Mcf) Details	Not answered.
Other Released Details	Not answered.
Are there additional details for the questions above (i.e. any answer containing Other, Specify, Unknown, and/or Fire, or any negative lost amounts)	Not answered.

District I
1625 N. French Dr., Hobbs, NM 88240
Phone:(575) 393-6161 Fax:(575) 393-0720

District II
811 S. First St., Artesia, NM 88210
Phone:(575) 748-1283 Fax:(575) 748-9720

District III
1000 Rio Brazos Rd., Aztec, NM 87410
Phone:(505) 334-6178 Fax:(505) 334-6170

District IV
1220 S. St Francis Dr., Santa Fe, NM 87505
Phone:(505) 476-3470 Fax:(505) 476-3462

State of New Mexico
Energy, Minerals and Natural Resources
Oil Conservation Division
1220 S. St Francis Dr.
Santa Fe, NM 87505

QUESTIONS, Page 2

Action 330207

QUESTIONS (continued)

Operator: GOODNIGHT MIDSTREAM PERMIAN, LLC 5910 North Central Expressway Dallas, TX 75206	OGRID: 372311
	Action Number: 330207
	Action Type: [NOTIFY] Notification Of Release (NOR)

QUESTIONS

Nature and Volume of Release (continued)	
Is this a gas only submission (i.e. only significant Mcf values reported)	No, according to supplied volumes this does not appear to be a "gas only" report.
Was this a major release as defined by Subsection A of 19.15.29.7 NMAC	No
Reasons why this would be considered a submission for a notification of a major release	Unavailable.
With the implementation of the 19.15.27 NMAC (05/25/2021), venting and/or flaring of natural gas (i.e. gas only) are to be submitted on the C-129 form.	

Initial Response	
The responsible party must undertake the following actions immediately unless they could create a safety hazard that would result in injury.	
The source of the release has been stopped	True
The impacted area has been secured to protect human health and the environment	Not answered.
Released materials have been contained via the use of berms or dikes, absorbent pads, or other containment devices	Not answered.
All free liquids and recoverable materials have been removed and managed appropriately	Not answered.
If all the actions described above have not been undertaken, explain why	Not answered.
Per Paragraph 4 of Subsection B of 19.15.29.8 NMAC the responsible party may commence remediation immediately after discovery of a release. If remediation has begun, please prepare and attach a narrative of actions to date in the follow-up C-141 submission. If remedial efforts have been successfully completed or if the release occurred within a lined containment area (see 19.15.29.11(A)(5)(a) NMAC), please prepare and attach all information needed for closure evaluation in the follow-up C-141 submission.	

District I
1625 N. French Dr., Hobbs, NM 88240
Phone:(575) 393-6161 Fax:(575) 393-0720
District II
811 S. First St., Artesia, NM 88210
Phone:(575) 748-1283 Fax:(575) 748-9720
District III
1000 Rio Brazos Rd., Aztec, NM 87410
Phone:(505) 334-6178 Fax:(505) 334-6170
District IV
1220 S. St Francis Dr., Santa Fe, NM 87505
Phone:(505) 476-3470 Fax:(505) 476-3462

State of New Mexico
Energy, Minerals and Natural Resources
Oil Conservation Division
1220 S. St Francis Dr.
Santa Fe, NM 87505

ACKNOWLEDGMENTS

Action 330207

ACKNOWLEDGMENTS

Operator: GOODNIGHT MIDSTREAM PERMIAN, LLC 5910 North Central Expressway Dallas, TX 75206	OGRID: 372311
	Action Number: 330207
	Action Type: [NOTIFY] Notification Of Release (NOR)

ACKNOWLEDGMENTS

<input checked="" type="checkbox"/>	I acknowledge that I am authorized to submit notification of a release on behalf of my operator.
<input checked="" type="checkbox"/>	I acknowledge that upon submitting this application, I will be creating a new incident file (assigned to my operator) to track the notification(s) and corrective action(s) for a release, pursuant to NMAC 19.15.29.
<input checked="" type="checkbox"/>	I acknowledge that creating a new incident file will require my operator to file subsequent submission(s) of form "C-141, Application for administrative approval of a release notification and corrective action", pursuant to NMAC 19.15.29.
<input checked="" type="checkbox"/>	I hereby certify that the information given above is true and complete to the best of my knowledge and understand that pursuant to OCD rules and regulations all operators are required to report and/or file certain release notifications and perform corrective actions for releases which may endanger public health or the environment.
<input checked="" type="checkbox"/>	I acknowledge the fact that the acceptance of a C-141 report by the OCD does not relieve the operator of liability should their operations have failed to adequately investigate and remediate contamination that pose a threat to groundwater, surface water, human health or the environment.
<input checked="" type="checkbox"/>	I acknowledge the fact that, in addition, OCD acceptance of a C-141 report does not relieve the operator of responsibility for compliance with any other federal, state, or local laws and/or regulations.

District I
1625 N. French Dr., Hobbs, NM 88240
Phone:(575) 393-6161 Fax:(575) 393-0720
District II
811 S. First St., Artesia, NM 88210
Phone:(575) 748-1283 Fax:(575) 748-9720
District III
1000 Rio Brazos Rd., Aztec, NM 87410
Phone:(505) 334-6178 Fax:(505) 334-6170
District IV
1220 S. St Francis Dr., Santa Fe, NM 87505
Phone:(505) 476-3470 Fax:(505) 476-3462

State of New Mexico
Energy, Minerals and Natural Resources
Oil Conservation Division
1220 S. St Francis Dr.
Santa Fe, NM 87505

CONDITIONS

Action 330207

CONDITIONS

Operator: GOODNIGHT MIDSTREAM PERMIAN, LLC 5910 North Central Expressway Dallas, TX 75206	OGRID: 372311
	Action Number: 330207
	Action Type: [NOTIFY] Notification Of Release (NOR)

CONDITIONS

Created By	Condition	Condition Date
aurquidi1	When submitting future reports regarding this release, please submit the calculations used or specific justification for the volumes reported on the initial C-141.	4/4/2024

APPENDIX C

CARMONA RESOURCES



Nearest water well

GOODNIGHT MIDSTREAM PERMIAN, LLC

Legend

- 0.06 Miles
- 0.50 Mile Radius
- BLUEBERRY HGB ROLL OFF OVERFILL (04.03.2024)
- NMSEO Water Well

128.8' - Drilled 2021

BLUEBERRY HGB ROLL OFF OVERFILL (04.03.2024)



Low Karst

GOODNIGHT MIDSTREAM PERMIAN, LLC

Legend

- BLUEBERRY HGB ROLL OFF OVERFILL (04.03.2024)
- Low

BLUEBERRY HGB ROLL OFF OVERFILL (04.03.2024)





New Mexico Office of the State Engineer

Water Column/Average Depth to Water

(A CLW##### in the POD suffix indicates the POD has been replaced & no longer serves a water right file.)

(R=POD has been replaced, O=orphaned, C=the file is closed)

(quarters are 1=NW 2=NE 3=SW 4=SE)

(quarters are smallest to largest)

(NAD83 UTM in meters)

(In feet)

POD Number	POD Sub-Code	basin	County	Q 64	Q 16	Q 4	Sec	Tws	Rng	X	Y	Distance	Depth Well	Depth Water	Water Column
CP 00600 POD1	CP	LE		2	4	25	21S	33E		639152	3591054*	1279	65		
CP 00765 POD1	CP	LE		3	2	13	21S	33E		638698	3594668*	2378	508		
CP 00766 POD1	CP	LE		3	2	13	21S	33E		638698	3594668*	2378	510		
CP 01887 POD1	CP	LE		2	2	2	35	21S	33E	637492	3590319	2607			
CP 01411 POD1	CP	LE		2	2	34	21S	33E		635968	3590386	3730	1149		
CP 00583	CP	LE			3	21	21S	34E		642944	3592518*	3798	171	128	43
CP 00578	CP	LE		4	3	11	21S	33E		636674	3595445*	3976	165	150	15

Average Depth to Water: **139 feet**

Minimum Depth: **128 feet**

Maximum Depth: **150 feet**

Record Count: 7

UTM NAD83 Radius Search (in meters):

Easting (X): 639150

Northing (Y): 3592333

Radius: 4000

*UTM location was derived from PLSS - see Help

The data is furnished by the NMOSE/ISC and is accepted by the recipient with the expressed understanding that the OSE/ISC make no warranties, expressed or implied, concerning the accuracy, completeness, reliability, usability, or suitability for any particular purpose of the data.



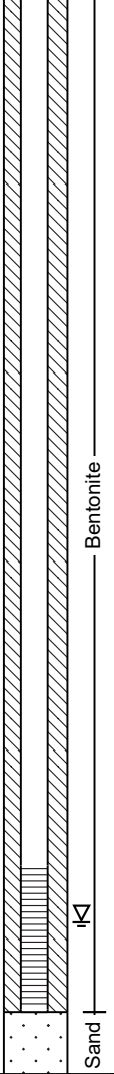

4/8/24 8:19 AM

Page 1 of 1

WATER COLUMN/ AVERAGE
DEPTH TO WATER



Soil Boring/Temporary Monitor Well TMW-1

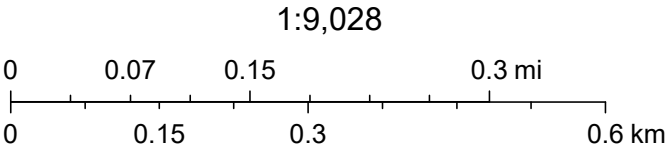
Company: Goodnight Midstream Permian, LLC Site: Blueberry SWD NMOCD Reference #: nRM2010753767 Location: Lea Co., NM PLSS: U/L "P" (SE/SE), Sec. 24, T21S, R33E			Well/Borehole ID: TMW-1 Coordinates (NAD 83): 32.459725,-103.520119 Drilling Date: 9/15/2021 Depth of Boring (ft): 150 Depth to Groundwater (ft): 128.8 Plugging Date: 10/25/2021			Drilling Company: Scarborough Drilling, Inc. Driller: L. Scarborough Drilling Method: Air Rotary Logged By: L. Scarborough Drafted By: B. Arguijo Draft Date: 10/29/2021		
Completion: N/A			Casing: N/A			Screen: N/A		
Comments: N/A								
Depth (ft)	Groundwater	Lithology	Material Description	Chloride Field Test	Lab	PID	Well Construction	
10			Caliche Topsoil	-	-	-		
20			Caliche	-	-	-		
30				-	-	-		
40				-	-	-		
50				-	-	-		
60				-	-	-		
70				-	-	-		
80				-	-	-		
90				-	-	-		
100				-	-	-		
110				-	-	-		
120				-	-	-		
130				-	-	-		
140				-	-	-		
150			-	-	-			
160			Notes: • Lines between material types represent approximate boundaries. Actual transitions may be gradual. • Due to the non-cohesive nature of the soil at lower depths, water was injected beginning at approximately 120 feet below ground surface (bgs) to prevent collapse of the borehole. • Borehole collapsed from approximately 141.5' to 150' bgs.					
170								

Disclaimer This bore log is intended for environmental not geotechnical purposes.

BLUEBERRY HGB ROLL OFF OVERFILL (04.03.2024)



4/8/2024, 9:16:38 AM



Esri, NASA, NGA, USGS, FEMA, Esri Community Maps Contributors, New Mexico State University, Texas Parks & Wildlife, © OpenStreetMap, Microsoft, CONANP, Esri, TomTom, Garmin, SafeGraph, GeoTechnologies, Inc, METI/NASA, USGS, EPA, NPS, US Census Bureau,

APPENDIX D

CARMONA RESOURCES





PHONE (575) 393-2326 ° 101 E. MARLAND ° HOBBS, NM 88240

April 15, 2024

CONNER MOEHRING

CARMONA RESOURCES

310 W WALL ST, SUITE 500

MIDLAND, TX 79701

RE: BLUEBERRY FACILITY

Enclosed are the results of analyses for samples received by the laboratory on 04/12/24 15:46.

Cardinal Laboratories is accredited through Texas NELAP under certificate number T104704398-23-16. Accreditation applies to drinking water, non-potable water and solid and chemical materials. All accredited analytes are denoted by an asterisk (*). For a complete list of accredited analytes and matrices visit the TCEQ website at www.tceq.texas.gov/field/qa/lab_accred_certif.html.

Cardinal Laboratories is accredited through the State of Colorado Department of Public Health and Environment for:

Method EPA 552.2	Haloacetic Acids (HAA-5)
Method EPA 524.2	Total Trihalomethanes (TTHM)
Method EPA 524.4	Regulated VOCs (V1, V2, V3)

Accreditation applies to public drinking water matrices.

This report meets NELAP requirements and is made up of a cover page, analytical results, and a copy of the original chain-of-custody. If you have any questions concerning this report, please feel free to contact me.

Sincerely,

A handwritten signature in black ink that reads "Celey D. Keene". The signature is written in a cursive, flowing style.

Celey D. Keene

Lab Director/Quality Manager



PHONE (575) 393-2326 ° 101 E. MARLAND ° HOBBS, NM 88240

Analytical Results For:

CARMONA RESOURCES
 CONNER MOEHRING
 310 W WALL ST, SUITE 500
 MIDLAND TX, 79701
 Fax To:

Received: 04/12/2024
 Reported: 04/15/2024
 Project Name: BLUEBERRY FACILITY
 Project Number: 2329
 Project Location: GOODNIGHT - LEA CO., NM

Sampling Date: 04/12/2024
 Sampling Type: Soil
 Sampling Condition: Cool & Intact
 Sample Received By: Tamara Oldaker

Sample ID: T - 1 (1') (H241937-01)

BTX 8021B		mg/kg		Analyzed By: JH					
Analyte	Result	Reporting Limit	Analyzed	Method Blank	BS	% Recovery	True Value QC	RPD	Qualifier
Benzene*	9.67	0.500	04/12/2024	ND	2.03	102	2.00	2.66	
Toluene*	51.6	0.500	04/12/2024	ND	2.18	109	2.00	2.10	
Ethylbenzene*	18.5	0.500	04/12/2024	ND	2.23	111	2.00	1.56	
Total Xylenes*	48.8	1.50	04/12/2024	ND	6.68	111	6.00	1.70	
Total BTX	128	3.00	04/12/2024	ND					

Surrogate: 4-Bromofluorobenzene (PID) 119 % 71.5-134

Chloride, SM4500Cl-B		mg/kg		Analyzed By: CT					
Analyte	Result	Reporting Limit	Analyzed	Method Blank	BS	% Recovery	True Value QC	RPD	Qualifier
Chloride	48.0	16.0	04/15/2024	ND	448	112	400	7.41	

TPH 8015M		mg/kg		Analyzed By: MS						S-06
Analyte	Result	Reporting Limit	Analyzed	Method Blank	BS	% Recovery	True Value QC	RPD	Qualifier	
GRO C6-C10*	1240	100	04/13/2024	ND	198	99.0	200	1.15		
DRO >C10-C28*	8620	100	04/13/2024	ND	198	98.8	200	3.53		
EXT DRO >C28-C36	1610	100	04/13/2024	ND						

Surrogate: 1-Chlorooctane 136 % 48.2-134

Surrogate: 1-Chlorooctadecane 168 % 49.1-148

Cardinal Laboratories

*=Accredited Analyte

PLEASE NOTE: Liability and Damages. Cardinal's liability and client's exclusive remedy for any claim arising, whether based in contract or tort, shall be limited to the amount paid by client for analyses. All claims, including those for negligence and any other cause whatsoever shall be deemed waived unless made in writing and received by Cardinal within thirty (30) days after completion of the applicable service. In no event shall Cardinal be liable for incidental or consequential damages, including, without limitation, business interruptions, loss of use, or loss of profits incurred by client, its subsidiaries, affiliates or successors arising out of or related to the performance of the services hereunder by Cardinal, regardless of whether such claim is based upon any of the above stated reasons or otherwise. Results relate only to the samples identified above. This report shall not be reproduced except in full with written approval of Cardinal Laboratories.

Celey D. Keene, Lab Director/Quality Manager



PHONE (575) 393-2326 ° 101 E. MARLAND ° HOBBS, NM 88240

Analytical Results For:

CARMONA RESOURCES
 CONNER MOEHRING
 310 W WALL ST, SUITE 500
 MIDLAND TX, 79701
 Fax To:

Received: 04/12/2024
 Reported: 04/15/2024
 Project Name: BLUEBERRY FACILITY
 Project Number: 2329
 Project Location: GOODNIGHT - LEA CO., NM

Sampling Date: 04/12/2024
 Sampling Type: Soil
 Sampling Condition: Cool & Intact
 Sample Received By: Tamara Oldaker

Sample ID: T - 1 (2') (H241937-02)

BTX 8021B		mg/kg		Analyzed By: JH					
Analyte	Result	Reporting Limit	Analyzed	Method Blank	BS	% Recovery	True Value QC	RPD	Qualifier
Benzene*	<0.050	0.050	04/13/2024	ND	2.24	112	2.00	1.23	
Toluene*	0.091	0.050	04/13/2024	ND	2.23	112	2.00	3.13	
Ethylbenzene*	<0.050	0.050	04/13/2024	ND	2.27	113	2.00	3.50	
Total Xylenes*	<0.150	0.150	04/13/2024	ND	6.74	112	6.00	3.96	
Total BTX	<0.300	0.300	04/13/2024	ND					

Surrogate: 4-Bromofluorobenzene (PID) 103 % 71.5-134

Chloride, SM4500Cl-B		mg/kg		Analyzed By: CT					
Analyte	Result	Reporting Limit	Analyzed	Method Blank	BS	% Recovery	True Value QC	RPD	Qualifier
Chloride	16.0	16.0	04/15/2024	ND	448	112	400	7.41	

TPH 8015M		mg/kg		Analyzed By: MS					
Analyte	Result	Reporting Limit	Analyzed	Method Blank	BS	% Recovery	True Value QC	RPD	Qualifier
GRO C6-C10*	<10.0	10.0	04/12/2024	ND	198	99.0	200	1.15	
DRO >C10-C28*	<10.0	10.0	04/12/2024	ND	198	98.8	200	3.53	
EXT DRO >C28-C36	<10.0	10.0	04/12/2024	ND					

Surrogate: 1-Chlorooctane 87.7 % 48.2-134

Surrogate: 1-Chlorooctadecane 87.2 % 49.1-148

Cardinal Laboratories

*=Accredited Analyte

PLEASE NOTE: Liability and Damages. Cardinal's liability and client's exclusive remedy for any claim arising, whether based in contract or tort, shall be limited to the amount paid by client for analyses. All claims, including those for negligence and any other cause whatsoever shall be deemed waived unless made in writing and received by Cardinal within thirty (30) days after completion of the applicable service. In no event shall Cardinal be liable for incidental or consequential damages, including, without limitation, business interruptions, loss of use, or loss of profits incurred by client, its subsidiaries, affiliates or successors arising out of or related to the performance of the services hereunder by Cardinal, regardless of whether such claim is based upon any of the above stated reasons or otherwise. Results relate only to the samples identified above. This report shall not be reproduced except in full with written approval of Cardinal Laboratories.

Celey D. Keene, Lab Director/Quality Manager



PHONE (575) 393-2326 ° 101 E. MARLAND ° HOBBS, NM 88240

Analytical Results For:

CARMONA RESOURCES
 CONNER MOEHRING
 310 W WALL ST, SUITE 500
 MIDLAND TX, 79701
 Fax To:

Received: 04/12/2024
 Reported: 04/15/2024
 Project Name: BLUEBERRY FACILITY
 Project Number: 2329
 Project Location: GOODNIGHT - LEA CO., NM

Sampling Date: 04/12/2024
 Sampling Type: Soil
 Sampling Condition: Cool & Intact
 Sample Received By: Tamara Oldaker

Sample ID: T - 2 (1') (H241937-03)

BTEx 8021B		mg/kg		Analyzed By: JH					
Analyte	Result	Reporting Limit	Analyzed	Method Blank	BS	% Recovery	True Value QC	RPD	Qualifier
Benzene*	16.1	0.500	04/13/2024	ND	2.24	112	2.00	1.23	
Toluene*	55.5	0.500	04/13/2024	ND	2.23	112	2.00	3.13	
Ethylbenzene*	17.6	0.500	04/13/2024	ND	2.27	113	2.00	3.50	
Total Xylenes*	50.8	1.50	04/13/2024	ND	6.74	112	6.00	3.96	
Total BTEX	140	3.00	04/13/2024	ND					

Surrogate: 4-Bromofluorobenzene (PID) 103 % 71.5-134

Chloride, SM4500Cl-B		mg/kg		Analyzed By: CT					
Analyte	Result	Reporting Limit	Analyzed	Method Blank	BS	% Recovery	True Value QC	RPD	Qualifier
Chloride	112	16.0	04/15/2024	ND	448	112	400	7.41	

TPH 8015M	mg/kg		Analyzed By: MS					S-06	
Analyte	Result	Reporting Limit	Analyzed	Method Blank	BS	% Recovery	True Value QC	RPD	Qualifier
GRO C6-C10*	2100	100	04/13/2024	ND	198	99.0	200	1.15	
DRO >C10-C28*	12900	100	04/13/2024	ND	198	98.8	200	3.53	
EXT DRO >C28-C36	2510	100	04/13/2024	ND					

Surrogate: 1-Chlorooctane 158 % 48.2-134

Surrogate: 1-Chlorooctadecane 239 % 49.1-148

Cardinal Laboratories

*=Accredited Analyte

PLEASE NOTE: Liability and Damages. Cardinal's liability and client's exclusive remedy for any claim arising, whether based in contract or tort, shall be limited to the amount paid by client for analyses. All claims, including those for negligence and any other cause whatsoever shall be deemed waived unless made in writing and received by Cardinal within thirty (30) days after completion of the applicable service. In no event shall Cardinal be liable for incidental or consequential damages, including, without limitation, business interruptions, loss of use, or loss of profits incurred by client, its subsidiaries, affiliates or successors arising out of or related to the performance of the services hereunder by Cardinal, regardless of whether such claim is based upon any of the above stated reasons or otherwise. Results relate only to the samples identified above. This report shall not be reproduced except in full with written approval of Cardinal Laboratories.

Celey D. Keene, Lab Director/Quality Manager



PHONE (575) 393-2326 ° 101 E. MARLAND ° HOBBS, NM 88240

Analytical Results For:

CARMONA RESOURCES
 CONNER MOEHRING
 310 W WALL ST, SUITE 500
 MIDLAND TX, 79701
 Fax To:

Received: 04/12/2024
 Reported: 04/15/2024
 Project Name: BLUEBERRY FACILITY
 Project Number: 2329
 Project Location: GOODNIGHT - LEA CO., NM

Sampling Date: 04/12/2024
 Sampling Type: Soil
 Sampling Condition: Cool & Intact
 Sample Received By: Tamara Oldaker

Sample ID: T - 2 (2') (H241937-04)

BTEx 8021B		mg/kg		Analyzed By: JH					
Analyte	Result	Reporting Limit	Analyzed	Method Blank	BS	% Recovery	True Value QC	RPD	Qualifier
Benzene*	1.28	0.050	04/13/2024	ND	2.24	112	2.00	1.23	
Toluene*	8.45	0.050	04/13/2024	ND	2.23	112	2.00	3.13	
Ethylbenzene*	4.32	0.050	04/13/2024	ND	2.27	113	2.00	3.50	
Total Xylenes*	14.2	0.150	04/13/2024	ND	6.74	112	6.00	3.96	
Total BTEX	28.3	0.300	04/13/2024	ND					

Surrogate: 4-Bromofluorobenzene (PID) 127 % 71.5-134

Chloride, SM4500Cl-B		mg/kg		Analyzed By: CT					
Analyte	Result	Reporting Limit	Analyzed	Method Blank	BS	% Recovery	True Value QC	RPD	Qualifier
Chloride	192	16.0	04/15/2024	ND	448	112	400	7.41	

TPH 8015M		mg/kg		Analyzed By: MS					
Analyte	Result	Reporting Limit	Analyzed	Method Blank	BS	% Recovery	True Value QC	RPD	Qualifier
GRO C6-C10*	303	10.0	04/13/2024	ND	198	99.0	200	1.15	
DRO >C10-C28*	3680	10.0	04/13/2024	ND	198	98.8	200	3.53	
EXT DRO >C28-C36	745	10.0	04/13/2024	ND					

Surrogate: 1-Chlorooctane 109 % 48.2-134

Surrogate: 1-Chlorooctadecane 121 % 49.1-148

Cardinal Laboratories

*=Accredited Analyte

PLEASE NOTE: Liability and Damages. Cardinal's liability and client's exclusive remedy for any claim arising, whether based in contract or tort, shall be limited to the amount paid by client for analyses. All claims, including those for negligence and any other cause whatsoever shall be deemed waived unless made in writing and received by Cardinal within thirty (30) days after completion of the applicable service. In no event shall Cardinal be liable for incidental or consequential damages, including, without limitation, business interruptions, loss of use, or loss of profits incurred by client, its subsidiaries, affiliates or successors arising out of or related to the performance of the services hereunder by Cardinal, regardless of whether such claim is based upon any of the above stated reasons or otherwise. Results relate only to the samples identified above. This report shall not be reproduced except in full with written approval of Cardinal Laboratories.

Celey D. Keene, Lab Director/Quality Manager



PHONE (575) 393-2326 ° 101 E. MARLAND ° HOBBS, NM 88240

Analytical Results For:

CARMONA RESOURCES
 CONNER MOEHRING
 310 W WALL ST, SUITE 500
 MIDLAND TX, 79701
 Fax To:

Received: 04/12/2024
 Reported: 04/15/2024
 Project Name: BLUEBERRY FACILITY
 Project Number: 2329
 Project Location: GOODNIGHT - LEA CO., NM

Sampling Date: 04/12/2024
 Sampling Type: Soil
 Sampling Condition: Cool & Intact
 Sample Received By: Tamara Oldaker

Sample ID: T - 2 (3') (H241937-05)

BTX 8021B		mg/kg		Analyzed By: JH					
Analyte	Result	Reporting Limit	Analyzed	Method Blank	BS	% Recovery	True Value QC	RPD	Qualifier
Benzene*	<0.050	0.050	04/13/2024	ND	2.24	112	2.00	1.23	
Toluene*	0.072	0.050	04/13/2024	ND	2.23	112	2.00	3.13	
Ethylbenzene*	<0.050	0.050	04/13/2024	ND	2.27	113	2.00	3.50	
Total Xylenes*	<0.150	0.150	04/13/2024	ND	6.74	112	6.00	3.96	
Total BTX	<0.300	0.300	04/13/2024	ND					

Surrogate: 4-Bromofluorobenzene (PID) 107 % 71.5-134

Chloride, SM4500Cl-B		mg/kg		Analyzed By: CT					
Analyte	Result	Reporting Limit	Analyzed	Method Blank	BS	% Recovery	True Value QC	RPD	Qualifier
Chloride	224	16.0	04/15/2024	ND	448	112	400	7.41	

TPH 8015M		mg/kg		Analyzed By: MS					
Analyte	Result	Reporting Limit	Analyzed	Method Blank	BS	% Recovery	True Value QC	RPD	Qualifier
GRO C6-C10*	<10.0	10.0	04/12/2024	ND	198	99.0	200	1.15	
DRO >C10-C28*	185	10.0	04/12/2024	ND	198	98.8	200	3.53	
EXT DRO >C28-C36	23.4	10.0	04/12/2024	ND					

Surrogate: 1-Chlorooctane 94.5 % 48.2-134

Surrogate: 1-Chlorooctadecane 97.1 % 49.1-148

Cardinal Laboratories

*=Accredited Analyte

PLEASE NOTE: Liability and Damages. Cardinal's liability and client's exclusive remedy for any claim arising, whether based in contract or tort, shall be limited to the amount paid by client for analyses. All claims, including those for negligence and any other cause whatsoever shall be deemed waived unless made in writing and received by Cardinal within thirty (30) days after completion of the applicable service. In no event shall Cardinal be liable for incidental or consequential damages, including, without limitation, business interruptions, loss of use, or loss of profits incurred by client, its subsidiaries, affiliates or successors arising out of or related to the performance of the services hereunder by Cardinal, regardless of whether such claim is based upon any of the above stated reasons or otherwise. Results relate only to the samples identified above. This report shall not be reproduced except in full with written approval of Cardinal Laboratories.

Celey D. Keene, Lab Director/Quality Manager



PHONE (575) 393-2326 ° 101 E. MARLAND ° HOBBS, NM 88240

Analytical Results For:

CARMONA RESOURCES
 CONNER MOEHRING
 310 W WALL ST, SUITE 500
 MIDLAND TX, 79701
 Fax To:

Received: 04/12/2024
 Reported: 04/15/2024
 Project Name: BLUEBERRY FACILITY
 Project Number: 2329
 Project Location: GOODNIGHT - LEA CO., NM

Sampling Date: 04/12/2024
 Sampling Type: Soil
 Sampling Condition: Cool & Intact
 Sample Received By: Tamara Oldaker

Sample ID: T - 2 (4') (H241937-06)

BTEx 8021B		mg/kg		Analyzed By: JH						
Analyte	Result	Reporting Limit	Analyzed	Method Blank	BS	% Recovery	True Value QC	RPD	Qualifier	
Benzene*	<0.050	0.050	04/13/2024	ND	2.24	112	2.00	1.23		
Toluene*	<0.050	0.050	04/13/2024	ND	2.23	112	2.00	3.13		
Ethylbenzene*	<0.050	0.050	04/13/2024	ND	2.27	113	2.00	3.50		
Total Xylenes*	<0.150	0.150	04/13/2024	ND	6.74	112	6.00	3.96		
Total BTEx	<0.300	0.300	04/13/2024	ND						

Surrogate: 4-Bromofluorobenzene (PID) 102 % 71.5-134

Chloride, SM4500CI-B		mg/kg		Analyzed By: CT						
Analyte	Result	Reporting Limit	Analyzed	Method Blank	BS	% Recovery	True Value QC	RPD	Qualifier	
Chloride	32.0	16.0	04/15/2024	ND	448	112	400	7.41		

TPH 8015M		mg/kg		Analyzed By: MS					
Analyte	Result	Reporting Limit	Analyzed	Method Blank	BS	% Recovery	True Value QC	RPD	Qualifier
GRO C6-C10*	<10.0	10.0	04/12/2024	ND	198	99.0	200	1.15	
DRO >C10-C28*	<10.0	10.0	04/12/2024	ND	198	98.8	200	3.53	
EXT DRO >C28-C36	<10.0	10.0	04/12/2024	ND					

Surrogate: 1-Chlorooctane 91.7 % 48.2-134

Surrogate: 1-Chlorooctadecane 86.0 % 49.1-148

Cardinal Laboratories

*=Accredited Analyte

PLEASE NOTE: Liability and Damages. Cardinal's liability and client's exclusive remedy for any claim arising, whether based in contract or tort, shall be limited to the amount paid by client for analyses. All claims, including those for negligence and any other cause whatsoever shall be deemed waived unless made in writing and received by Cardinal within thirty (30) days after completion of the applicable service. In no event shall Cardinal be liable for incidental or consequential damages, including, without limitation, business interruptions, loss of use, or loss of profits incurred by client, its subsidiaries, affiliates or successors arising out of or related to the performance of the services hereunder by Cardinal, regardless of whether such claim is based upon any of the above stated reasons or otherwise. Results relate only to the samples identified above. This report shall not be reproduced except in full with written approval of Cardinal Laboratories.

Celey D. Keene, Lab Director/Quality Manager



PHONE (575) 393-2326 ° 101 E. MARLAND ° HOBBS, NM 88240

Notes and Definitions

S-06	The recovery of this surrogate is outside control limits due to sample dilution required from high analyte concentration and/or matrix interference's.
ND	Analyte NOT DETECTED at or above the reporting limit
RPD	Relative Percent Difference
**	Samples not received at proper temperature of 6°C or below.
***	Insufficient time to reach temperature.
-	Chloride by SM4500Cl-B does not require samples be received at or below 6°C Samples reported on an as received basis (wet) unless otherwise noted on report

Cardinal Laboratories

*=Accredited Analyte

PLEASE NOTE: Liability and Damages. Cardinal's liability and client's exclusive remedy for any claim arising, whether based in contract or tort, shall be limited to the amount paid by client for analyses. All claims, including those for negligence and any other cause whatsoever shall be deemed waived unless made in writing and received by Cardinal within thirty (30) days after completion of the applicable service. In no event shall Cardinal be liable for incidental or consequential damages, including, without limitation, business interruptions, loss of use, or loss of profits incurred by client, its subsidiaries, affiliates or successors arising out of or related to the performance of the services hereunder by Cardinal, regardless of whether such claim is based upon any of the above stated reasons or otherwise. Results relate only to the samples identified above. This report shall not be reproduced except in full with written approval of Cardinal Laboratories.

A handwritten signature in black ink, appearing to read "Celey D. Keene".

Celey D. Keene, Lab Director/Quality Manager

Chain of Custody

Work Order No:

A241937

Page 1 of 1[illegible]



PHONE (575) 393-2326 ° 101 E. MARLAND ° HOBBS, NM 88240

April 15, 2024

CONNER MOEHRING

CARMONA RESOURCES

310 W WALL ST, SUITE 500

MIDLAND, TX 79701

RE: BLUEBERRY FACILITY

Enclosed are the results of analyses for samples received by the laboratory on 04/12/24 15:46.

Cardinal Laboratories is accredited through Texas NELAP under certificate number T104704398-23-16. Accreditation applies to drinking water, non-potable water and solid and chemical materials. All accredited analytes are denoted by an asterisk (*). For a complete list of accredited analytes and matrices visit the TCEQ website at www.tceq.texas.gov/field/qa/lab_accred_certif.html.

Cardinal Laboratories is accredited through the State of Colorado Department of Public Health and Environment for:

Method EPA 552.2	Haloacetic Acids (HAA-5)
Method EPA 524.2	Total Trihalomethanes (TTHM)
Method EPA 524.4	Regulated VOCs (V1, V2, V3)

Accreditation applies to public drinking water matrices.

This report meets NELAP requirements and is made up of a cover page, analytical results, and a copy of the original chain-of-custody. If you have any questions concerning this report, please feel free to contact me.

Sincerely,

A handwritten signature in black ink that reads "Celey D. Keene". The signature is written in a cursive style with a large, stylized 'C' and 'K'.

Celey D. Keene

Lab Director/Quality Manager



PHONE (575) 393-2326 • 101 E. MARLAND • HOBBS, NM 88240

Analytical Results For:

CARMONA RESOURCES
 CONNER MOEHRING
 310 W WALL ST, SUITE 500
 MIDLAND TX, 79701
 Fax To:

Received: 04/12/2024
 Reported: 04/15/2024
 Project Name: BLUEBERRY FACILITY
 Project Number: 2329
 Project Location: GOODNIGHT - LEA CO., NM

Sampling Date: 04/12/2024
 Sampling Type: Soil
 Sampling Condition: Cool & Intact
 Sample Received By: Tamara Oldaker

Sample ID: BACKGROUND PASTURE (0.5') (H241938-01)

BTX 8021B		mg/kg		Analyzed By: JH					
Analyte	Result	Reporting Limit	Analyzed	Method Blank	BS	% Recovery	True Value QC	RPD	Qualifier
Benzene*	<0.050	0.050	04/13/2024	ND	2.24	112	2.00	1.23	
Toluene*	<0.050	0.050	04/13/2024	ND	2.23	112	2.00	3.13	
Ethylbenzene*	<0.050	0.050	04/13/2024	ND	2.27	113	2.00	3.50	
Total Xylenes*	<0.150	0.150	04/13/2024	ND	6.74	112	6.00	3.96	
Total BTX	<0.300	0.300	04/13/2024	ND					

Surrogate: 4-Bromofluorobenzene (PID) 103 % 71.5-134

Chloride, SM4500Cl-B		mg/kg		Analyzed By: CT						
Analyte	Result	Reporting Limit	Analyzed	Method Blank	BS	% Recovery	True Value QC	RPD	Qualifier	
Chloride	16.0	16.0	04/15/2024	ND	448	112	400	7.41		

TPH 8015M		mg/kg		Analyzed By: MS					
Analyte	Result	Reporting Limit	Analyzed	Method Blank	BS	% Recovery	True Value QC	RPD	Qualifier
GRO C6-C10*	<10.0	10.0	04/12/2024	ND	198	99.0	200	1.15	
DRO >C10-C28*	<10.0	10.0	04/12/2024	ND	198	98.8	200	3.53	
EXT DRO >C28-C36	<10.0	10.0	04/12/2024	ND					

Surrogate: 1-Chlorooctane 88.0 % 48.2-134

Surrogate: 1-Chlorooctadecane 83.4 % 49.1-148

Cardinal Laboratories

*=Accredited Analyte

PLEASE NOTE: Liability and Damages. Cardinal's liability and client's exclusive remedy for any claim arising, whether based in contract or tort, shall be limited to the amount paid by client for analyses. All claims, including those for negligence and any other cause whatsoever shall be deemed waived unless made in writing and received by Cardinal within thirty (30) days after completion of the applicable service. In no event shall Cardinal be liable for incidental or consequential damages, including, without limitation, business interruptions, loss of use, or loss of profits incurred by client, its subsidiaries, affiliates or successors arising out of or related to the performance of the services hereunder by Cardinal, regardless of whether such claim is based upon any of the above stated reasons or otherwise. Results relate only to the samples identified above. This report shall not be reproduced except in full with written approval of Cardinal Laboratories.

Celey D. Keene, Lab Director/Quality Manager



PHONE (575) 393-2326 ° 101 E. MARLAND ° HOBBS, NM 88240

Analytical Results For:

CARMONA RESOURCES
 CONNER MOEHRING
 310 W WALL ST, SUITE 500
 MIDLAND TX, 79701
 Fax To:

Received: 04/12/2024
 Reported: 04/15/2024
 Project Name: BLUEBERRY FACILITY
 Project Number: 2329
 Project Location: GOODNIGHT - LEA CO., NM

Sampling Date: 04/12/2024
 Sampling Type: Soil
 Sampling Condition: Cool & Intact
 Sample Received By: Tamara Oldaker

Sample ID: BACKGROUND PAD (0.5') (H241938-02)

BTX 8021B			mg/kg		Analyzed By: JH				
Analyte	Result	Reporting Limit	Analyzed	Method Blank	BS	% Recovery	True Value QC	RPD	Qualifier
Benzene*	<0.050	0.050	04/13/2024	ND	2.24	112	2.00	1.23	
Toluene*	<0.050	0.050	04/13/2024	ND	2.23	112	2.00	3.13	
Ethylbenzene*	<0.050	0.050	04/13/2024	ND	2.27	113	2.00	3.50	
Total Xylenes*	<0.150	0.150	04/13/2024	ND	6.74	112	6.00	3.96	
Total BTX	<0.300	0.300	04/13/2024	ND					

Surrogate: 4-Bromofluorobenzene (PID) 103 % 71.5-134

Chloride, SM4500Cl-B		mg/kg		Analyzed By: AC					
Analyte	Result	Reporting Limit	Analyzed	Method Blank	BS	% Recovery	True Value QC	RPD	Qualifier
Chloride	64.0	16.0	04/15/2024	ND	464	116	400	3.39	

TPH 8015M		mg/kg		Analyzed By: MS					
Analyte	Result	Reporting Limit	Analyzed	Method Blank	BS	% Recovery	True Value QC	RPD	Qualifier
GRO C6-C10*	<10.0	10.0	04/13/2024	ND	198	99.0	200	1.15	
DRO >C10-C28*	<10.0	10.0	04/13/2024	ND	198	98.8	200	3.53	
EXT DRO >C28-C36	<10.0	10.0	04/13/2024	ND					

Surrogate: 1-Chlorooctane 83.9 % 48.2-134

Surrogate: 1-Chlorooctadecane 81.3 % 49.1-148

Cardinal Laboratories

*=Accredited Analyte

PLEASE NOTE: Liability and Damages. Cardinal's liability and client's exclusive remedy for any claim arising, whether based in contract or tort, shall be limited to the amount paid by client for analyses. All claims, including those for negligence and any other cause whatsoever shall be deemed waived unless made in writing and received by Cardinal within thirty (30) days after completion of the applicable service. In no event shall Cardinal be liable for incidental or consequential damages, including, without limitation, business interruptions, loss of use, or loss of profits incurred by client, its subsidiaries, affiliates or successors arising out of or related to the performance of the services hereunder by Cardinal, regardless of whether such claim is based upon any of the above stated reasons or otherwise. Results relate only to the samples identified above. This report shall not be reproduced except in full with written approval of Cardinal Laboratories.

Celey D. Keene, Lab Director/Quality Manager



PHONE (575) 393-2326 ° 101 E. MARLAND ° HOBBS, NM 88240

Notes and Definitions

ND	Analyte NOT DETECTED at or above the reporting limit
RPD	Relative Percent Difference
**	Samples not received at proper temperature of 6°C or below.
***	Insufficient time to reach temperature.
-	Chloride by SM4500Cl-B does not require samples be received at or below 6°C Samples reported on an as received basis (wet) unless otherwise noted on report

Cardinal Laboratories

*=Accredited Analyte

PLEASE NOTE: Liability and Damages. Cardinal's liability and client's exclusive remedy for any claim arising, whether based in contract or tort, shall be limited to the amount paid by client for analyses. All claims, including those for negligence and any other cause whatsoever shall be deemed waived unless made in writing and received by Cardinal within thirty (30) days after completion of the applicable service. In no event shall Cardinal be liable for incidental or consequential damages, including, without limitation, business interruptions, loss of use, or loss of profits incurred by client, its subsidiaries, affiliates or successors arising out of or related to the performance of the services hereunder by Cardinal, regardless of whether such claim is based upon any of the above stated reasons or otherwise. Results relate only to the samples identified above. This report shall not be reproduced except in full with written approval of Cardinal Laboratories.

A handwritten signature in black ink, appearing to read "Celey D. Keene".

Celey D. Keene, Lab Director/Quality Manager

Chain of Custody

Work Order No: 424938

Page 1 of 1[illegible]

District I
1625 N. French Dr., Hobbs, NM 88240
Phone:(575) 393-6161 Fax:(575) 393-0720
District II
811 S. First St., Artesia, NM 88210
Phone:(575) 748-1283 Fax:(575) 748-9720
District III
1000 Rio Brazos Rd., Aztec, NM 87410
Phone:(505) 334-6178 Fax:(505) 334-6170
District IV
1220 S. St Francis Dr., Santa Fe, NM 87505
Phone:(505) 476-3470 Fax:(505) 476-3462

State of New Mexico
Energy, Minerals and Natural Resources
Oil Conservation Division
1220 S. St Francis Dr.
Santa Fe, NM 87505

QUESTIONS

Action 334275

QUESTIONS

Operator: GOODNIGHT MIDSTREAM PERMIAN, LLC 5910 North Central Expressway Dallas, TX 75206	OGRID: 372311
	Action Number: 334275
	Action Type: [C-141] Site Char./Remediation Plan C-141 (C-141-v-Plan)

QUESTIONS

Prerequisites	
Incident ID (n#)	nAPP2409552203
Incident Name	NAPP2409552203 BLUEBERRY HGB ROLL OFF OVERFILL @ 0
Incident Type	Produced Water Release
Incident Status	Remediation Plan Received

Location of Release Source	
<i>Please answer all the questions in this group.</i>	
Site Name	BLUEBERRY HGB ROLL OFF OVERFILL
Date Release Discovered	04/03/2024
Surface Owner	Private

Incident Details	
<i>Please answer all the questions in this group.</i>	
Incident Type	Oil Release
Did this release result in a fire or is the result of a fire	No
Did this release result in any injuries	No
Has this release reached or does it have a reasonable probability of reaching a watercourse	No
Has this release endangered or does it have a reasonable probability of endangering public health	No
Has this release substantially damaged or will it substantially damage property or the environment	No
Is this release of a volume that is or may with reasonable probability be detrimental to fresh water	No

Nature and Volume of Release	
<i>Material(s) released, please answer all that apply below. Any calculations or specific justifications for the volumes provided should be attached to the follow-up C-141 submission.</i>	
Crude Oil Released (bbls) Details	Cause: Overflow - Tank, Pit, Etc. Dump Valve Crude Oil Released: 6 BBL Recovered: 5 BBL Lost: 1 BBL.
Produced Water Released (bbls) Details	Not answered.
Is the concentration of chloride in the produced water >10,000 mg/l	No
Condensate Released (bbls) Details	Not answered.
Natural Gas Vented (Mcf) Details	Not answered.
Natural Gas Flared (Mcf) Details	Not answered.
Other Released Details	Not answered.
Are there additional details for the questions above (i.e. any answer containing Other, Specify, Unknown, and/or Fire, or any negative lost amounts)	Not answered.

District I

1625 N. French Dr., Hobbs, NM 88240
Phone:(575) 393-6161 Fax:(575) 393-0720

District II

811 S. First St., Artesia, NM 88210
Phone:(575) 748-1283 Fax:(575) 748-9720

District III

1000 Rio Brazos Rd., Aztec, NM 87410
Phone:(505) 334-6178 Fax:(505) 334-6170

District IV

1220 S. St Francis Dr., Santa Fe, NM 87505
Phone:(505) 476-3470 Fax:(505) 476-3462

State of New Mexico
Energy, Minerals and Natural Resources
Oil Conservation Division
1220 S. St Francis Dr.
Santa Fe, NM 87505

QUESTIONS, Page 2

Action 334275

QUESTIONS (continued)

Operator: GOODNIGHT MIDSTREAM PERMIAN, LLC 5910 North Central Expressway Dallas, TX 75206	OGRID:
	372311
	Action Number:
	334275
Action Type:	
[C-141] Site Char./Remediation Plan C-141 (C-141-v-Plan)	

QUESTIONS

Nature and Volume of Release (continued)	
Is this a gas only submission (i.e. only significant Mcf values reported)	No, according to supplied volumes this does not appear to be a "gas only" report.
Was this a major release as defined by Subsection A of 19.15.29.7 NMAC	No
Reasons why this would be considered a submission for a notification of a major release	Unavailable.
With the implementation of the 19.15.27 NMAC (05/25/2021), venting and/or flaring of natural gas (i.e. gas only) are to be submitted on the C-129 form.	

Initial Response

The responsible party must undertake the following actions immediately unless they could create a safety hazard that would result in injury.

The source of the release has been stopped	True
The impacted area has been secured to protect human health and the environment	True
Released materials have been contained via the use of berms or dikes, absorbent pads, or other containment devices	True
All free liquids and recoverable materials have been removed and managed appropriately	True
If all the actions described above have not been undertaken, explain why	Not answered.

Per Paragraph (4) of Subsection B of 19.15.29.8 NMAC the responsible party may commence remediation immediately after discovery of a release. If remediation has begun, please prepare and attach a narrative of actions to date in the follow-up C-141 submission. If remedial efforts have been successfully completed or if the release occurred within a lined containment area (see Subparagraph (a) of Paragraph (5) of Subsection A of 19.15.29.11 NMAC), please prepare and attach all information needed for closure evaluation in the follow-up C-141 submission.

I hereby certify that the information given above is true and complete to the best of my knowledge and understand that pursuant to OCD rules and regulations all operators are required to report and/or file certain release notifications and perform corrective actions for releases which may endanger public health or the environment. The acceptance of a C-141 report by the OCD does not relieve the operator of liability should their operations have failed to adequately investigate and remediate contamination that pose a threat to groundwater, surface water, human health or the environment. In addition, OCD acceptance of a C-141 report does not relieve the operator of responsibility for compliance with any other federal, state, or local laws and/or regulations.

I hereby agree and sign off to the above statement	Name: Adrian Urduidi Title: HSE Representative Email: adrian.urduidi@goodnightmidstream.com Date: 04/17/2024
--	--

District I

1625 N. French Dr., Hobbs, NM 88240
Phone:(575) 393-6161 Fax:(575) 393-0720

District II

811 S. First St., Artesia, NM 88210
Phone:(575) 748-1283 Fax:(575) 748-9720

District III

1000 Rio Brazos Rd., Aztec, NM 87410
Phone:(505) 334-6178 Fax:(505) 334-6170

District IV

1220 S. St Francis Dr., Santa Fe, NM 87505
Phone:(505) 476-3470 Fax:(505) 476-3462

State of New Mexico
Energy, Minerals and Natural Resources
Oil Conservation Division
1220 S. St Francis Dr.
Santa Fe, NM 87505

QUESTIONS, Page 3

Action 334275

QUESTIONS (continued)

Operator: GOODNIGHT MIDSTREAM PERMIAN, LLC 5910 North Central Expressway Dallas, TX 75206	OGRID:
	372311
	Action Number:
	334275
Action Type:	
[C-141] Site Char./Remediation Plan C-141 (C-141-v-Plan)	

QUESTIONS**Site Characterization**

Please answer all the questions in this group (only required when seeking remediation plan approval and beyond). This information must be provided to the appropriate district office no later than 90 days after the release discovery date.

What is the shallowest depth to groundwater beneath the area affected by the release in feet below ground surface (ft bgs)	Between 100 and 500 (ft.)
What method was used to determine the depth to ground water	U.S. Geological Survey
Did this release impact groundwater or surface water	No
What is the minimum distance, between the closest lateral extents of the release and the following surface areas:	
A continuously flowing watercourse or any other significant watercourse	Between 1 and 5 (mi.)
Any lakebed, sinkhole, or playa lake (measured from the ordinary high-water mark)	Between 1000 (ft.) and ½ (mi.)
An occupied permanent residence, school, hospital, institution, or church	Between 1 and 5 (mi.)
A spring or a private domestic fresh water well used by less than five households for domestic or stock watering purposes	Between ½ and 1 (mi.)
Any other fresh water well or spring	Between ½ and 1 (mi.)
Incorporated municipal boundaries or a defined municipal fresh water well field	Greater than 5 (mi.)
A wetland	Between 500 and 1000 (ft.)
A subsurface mine	Greater than 5 (mi.)
An (non-karst) unstable area	Between 1000 (ft.) and ½ (mi.)
Categorize the risk of this well / site being in a karst geology	Low
A 100-year floodplain	Greater than 5 (mi.)
Did the release impact areas not on an exploration, development, production, or storage site	No

Remediation Plan

Please answer all the questions that apply or are indicated. This information must be provided to the appropriate district office no later than 90 days after the release discovery date.

Requesting a remediation plan approval with this submission	Yes
Attach a comprehensive report demonstrating the lateral and vertical extents of soil contamination associated with the release have been determined, pursuant to 19.15.29.11 NMAC and 19.15.29.13 NMAC.	
Have the lateral and vertical extents of contamination been fully delineated	Yes
Was this release entirely contained within a lined containment area	No

Soil Contamination Sampling: (Provide the highest observable value for each, in milligrams per kilograms.)

Chloride	(EPA 300.0 or SM4500 Cl B)	224
TPH (GRO+DRO+MRO)	(EPA SW-846 Method 8015M)	17510
GRO+DRO	(EPA SW-846 Method 8015M)	15000
BTEX	(EPA SW-846 Method 8021B or 8260B)	140
Benzene	(EPA SW-846 Method 8021B or 8260B)	16.1

Per Subsection B of 19.15.29.11 NMAC unless the site characterization report includes completed efforts at remediation, the report must include a proposed remediation plan in accordance with 19.15.29.12 NMAC, which includes the anticipated timelines for beginning and completing the remediation.

On what estimated date will the remediation commence	04/12/2024
On what date will (or did) the final sampling or liner inspection occur	04/12/2024
On what date will (or was) the remediation complete(d)	04/30/2024
What is the estimated surface area (in square feet) that will be reclaimed	0
What is the estimated volume (in cubic yards) that will be reclaimed	0
What is the estimated surface area (in square feet) that will be remediated	1600
What is the estimated volume (in cubic yards) that will be remediated	180

These estimated dates and measurements are recognized to be the best guess or calculation at the time of submission and may (be) change(d) over time as more remediation efforts are completed.

The OCD recognizes that proposed remediation measures may have to be minimally adjusted in accordance with the physical realities encountered during remediation. If the responsible party has any need to significantly deviate from the remediation plan proposed, then it should consult with the division to determine if another remediation plan submission is required.

District I

1625 N. French Dr., Hobbs, NM 88240
Phone:(575) 393-6161 Fax:(575) 393-0720

District II

811 S. First St., Artesia, NM 88210
Phone:(575) 748-1283 Fax:(575) 748-9720

District III

1000 Rio Brazos Rd., Aztec, NM 87410
Phone:(505) 334-6178 Fax:(505) 334-6170

District IV

1220 S. St Francis Dr., Santa Fe, NM 87505
Phone:(505) 476-3470 Fax:(505) 476-3462

State of New Mexico
Energy, Minerals and Natural Resources
Oil Conservation Division
1220 S. St Francis Dr.
Santa Fe, NM 87505

QUESTIONS, Page 4

Action 334275

QUESTIONS (continued)

Operator: GOODNIGHT MIDSTREAM PERMIAN, LLC 5910 North Central Expressway Dallas, TX 75206	OGRID:	372311
	Action Number:	334275
	Action Type:	[C-141] Site Char./Remediation Plan C-141 (C-141-v-Plan)

QUESTIONS**Remediation Plan (continued)**

Please answer all the questions that apply or are indicated. This information must be provided to the appropriate district office no later than 90 days after the release discovery date.

This remediation will (or is expected to) utilize the following processes to remediate / reduce contaminants:

(Select all answers below that apply.)

(Ex Situ) Excavation and off-site disposal (i.e. dig and haul, hydrovac, etc.)	Yes
Which OCD approved facility will be used for off-site disposal	R360 Artesia LLC LANDFARM [FEEM0112340644]
OR which OCD approved well (API) will be used for off-site disposal	Not answered.
OR is the off-site disposal site, to be used, out-of-state	Not answered.
OR is the off-site disposal site, to be used, an NMED facility	Not answered.
(Ex Situ) Excavation and on-site remediation (i.e. On-Site Land Farms)	Not answered.
(In Situ) Soil Vapor Extraction	Not answered.
(In Situ) Chemical processing (i.e. Soil Shredding, Potassium Permanganate, etc.)	Not answered.
(In Situ) Biological processing (i.e. Microbes / Fertilizer, etc.)	Not answered.
(In Situ) Physical processing (i.e. Soil Washing, Gypsum, Disking, etc.)	Not answered.
Ground Water Abatement pursuant to 19.15.30 NMAC	Not answered.
OTHER (Non-listed remedial process)	Not answered.

Per Subsection B of 19.15.29.11 NMAC unless the site characterization report includes completed efforts at remediation, the report must include a proposed remediation plan in accordance with 19.15.29.12 NMAC, which includes the anticipated timelines for beginning and completing the remediation.

I hereby certify that the information given above is true and complete to the best of my knowledge and understand that pursuant to OCD rules and regulations all operators are required to report and/or file certain release notifications and perform corrective actions for releases which may endanger public health or the environment. The acceptance of a C-141 report by the OCD does not relieve the operator of liability should their operations have failed to adequately investigate and remediate contamination that pose a threat to groundwater, surface water, human health or the environment. In addition, OCD acceptance of a C-141 report does not relieve the operator of responsibility for compliance with any other federal, state, or local laws and/or regulations.

I hereby agree and sign off to the above statement	Name: Adrian Urduidi Title: HSE Representative Email: adrian.urquidi@goodnightmidstream.com Date: 04/17/2024
--	--

The OCD recognizes that proposed remediation measures may have to be minimally adjusted in accordance with the physical realities encountered during remediation. If the responsible party has any need to significantly deviate from the remediation plan proposed, then it should consult with the division to determine if another remediation plan submission is required.

District I
1625 N. French Dr., Hobbs, NM 88240
Phone:(575) 393-6161 Fax:(575) 393-0720
District II
811 S. First St., Artesia, NM 88210
Phone:(575) 748-1283 Fax:(575) 748-9720
District III
1000 Rio Brazos Rd., Aztec, NM 87410
Phone:(505) 334-6178 Fax:(505) 334-6170
District IV
1220 S. St Francis Dr., Santa Fe, NM 87505
Phone:(505) 476-3470 Fax:(505) 476-3462

State of New Mexico
Energy, Minerals and Natural Resources
Oil Conservation Division
1220 S. St Francis Dr.
Santa Fe, NM 87505

QUESTIONS, Page 5

Action 334275

QUESTIONS (continued)

Operator: GOODNIGHT MIDSTREAM PERMIAN, LLC 5910 North Central Expressway Dallas, TX 75206	OGRID: 372311
	Action Number: 334275
	Action Type: [C-141] Site Char./Remediation Plan C-141 (C-141-v-Plan)

QUESTIONS

Deferral Requests Only	
Only answer the questions in this group if seeking a deferral upon approval this submission. Each of the following items must be confirmed as part of any request for deferral of remediation.	
Requesting a deferral of the remediation closure due date with the approval of this submission	No

District I

1625 N. French Dr., Hobbs, NM 88240
Phone:(575) 393-6161 Fax:(575) 393-0720

District II

811 S. First St., Artesia, NM 88210
Phone:(575) 748-1283 Fax:(575) 748-9720

District III

1000 Rio Brazos Rd., Aztec, NM 87410
Phone:(505) 334-6178 Fax:(505) 334-6170

District IV

1220 S. St Francis Dr., Santa Fe, NM 87505
Phone:(505) 476-3470 Fax:(505) 476-3462

State of New Mexico
Energy, Minerals and Natural Resources
Oil Conservation Division
1220 S. St Francis Dr.
Santa Fe, NM 87505

QUESTIONS, Page 6

Action 334275

QUESTIONS (continued)

Operator: GOODNIGHT MIDSTREAM PERMIAN, LLC 5910 North Central Expressway Dallas, TX 75206	OGRID: 372311
	Action Number: 334275
	Action Type: [C-141] Site Char./Remediation Plan C-141 (C-141-v-Plan)

QUESTIONS

Sampling Event Information	
Last sampling notification (C-141N) recorded	335261
Sampling date pursuant to Subparagraph (a) of Paragraph (1) of Subsection D of 19.15.29.12 NMAC	04/23/2024
What was the (estimated) number of samples that were to be gathered	20
What was the sampling surface area in square feet	1604

Remediation Closure Request

Only answer the questions in this group if seeking remediation closure for this release because all remediation steps have been completed.

Requesting a remediation closure approval with this submission	No
--	----

District I
1625 N. French Dr., Hobbs, NM 88240
Phone:(575) 393-6161 Fax:(575) 393-0720
District II
811 S. First St., Artesia, NM 88210
Phone:(575) 748-1283 Fax:(575) 748-9720
District III
1000 Rio Brazos Rd., Aztec, NM 87410
Phone:(505) 334-6178 Fax:(505) 334-6170
District IV
1220 S. St Francis Dr., Santa Fe, NM 87505
Phone:(505) 476-3470 Fax:(505) 476-3462

State of New Mexico
Energy, Minerals and Natural Resources
Oil Conservation Division
1220 S. St Francis Dr.
Santa Fe, NM 87505

CONDITIONS

Action 334275

CONDITIONS

Operator: GOODNIGHT MIDSTREAM PERMIAN, LLC 5910 North Central Expressway Dallas, TX 75206	OGRID: 372311
	Action Number: 334275
	Action Type: [C-141] Site Char./Remediation Plan C-141 (C-141-v-Plan)

CONDITIONS

Created By	Condition	Condition Date
nvelez	Remediation plan is approved as written. Goodnight has 90-days (July 29, 2024) to submit to OCD its appropriate or final remediation closure report.	4/29/2024