

Volume calculator

There was no volume calculator prepared when the spill occurred.



**Pima Environmental Services**  
**5614 N. Lovington Highway**  
**Hobbs, NM 88240**  
**575-964-7740**

May 2, 2024

NMOCD District 2  
811 S. First St  
Artesia, NM, 88210

Bureau of Land Management  
620 East Lone Street  
Carlsbad, NM 88220

**RE: Liner Inspection and Closure Report**  
**Arcturus 18 Fed #3-4 CTB**  
**API No. 30-15-38953/30-015-38611**  
**GPS : Latitude 32.656205 Longitude -103.916266**  
**UL- M, Section 18, Township 19S, Range 31E**  
**Eddy County, NM**  
**NMOCD Reference No. NRM2000939800**

Devon Energy Production Company (Devon) has contracted Pima Environmental Services, LLC (Pima) to perform a liner inspection and prepare this closure report for a produced water release that happened at the Arcturus 18 Fed #3-4 CTB (Arcturus). This incident was assigned Incident ID:NRM2000939800, by the New Mexico Oil Conservation Division (NMOCD).

#### **Site Information and Site Characterization**

The Arcturus is located approximately twelve (12) miles southeast of Loco Hills, NM. This spill site is in Unit M, Section 18, Township 19S, Range 31E, Latitude 32.656205 Longitude -103.916266, Eddy County, NM. A Location Map can be found in Figure 1.

Based upon New Mexico Office of the State Engineer well water data, depth to the nearest groundwater in this area is 180 feet below grade surface (BGS). According to the United States Geological Survey well water data, depth to the nearest groundwater in this area is 22 feet BGS. See Appendix A for referenced water surveys. The Arcturus is in a high karst area (Figure 3). A Topographic Map can be found in Figure 2.

#### **Release Information**

**NRM2000939800:** On August 4, 2019, the radar malfunctioned on the tank gauges. Causing fluid to be released. Approximately 252.49 barrels (bbls) of produced water were leaked from the tank, into the lined, secondary containment. A vacuum truck was dispatched and recovered approximately 252.49 bbls of fluid from the lined SPCC containment ring. Once standing fluids were removed, the liner was visually inspected by Devon field staff for any pinholes or punctures; none were found. Based on this inspection there is no evidence that the spilled fluids left containment.

A Site Map can be found in Figure 4.

#### **Site Assessment and Liner Inspection**

On April 29, 2024, after submitting the 48-hour notification application ID:337692 to the OCD, Pima Environmental conducted a liner inspection at this location. Pima concluded that this liner and containment maintained its integrity and was able to retain the fluids. The liner inspection form and photographic documentation can be found in Appendix C.

**Countermeasures Due to Rejection**

The prior report faced rejection due to concerns raised by the NMOC application #158556. The summary of rejection outlined the following reasons:

- 1) The liner is to be exposed. The photos provided in the report contained snow melting not exposing the entirety of the liner for inspection.
  - The Liner was power washed and cleaned to ensure the integrity of the liner.
- 2) Photos 10 and 11 provided in the report depict areas of concern regarding liner integrity.
  - The photos provided in the initial report depict a dark area on the liner. The dark area on the liner is a coat of epoxy coating, we have attached close up photographs to demonstrate there were no pinholes or punctures on the liner.
- 3) Provide additional documentation of liner integrity. If unable to demonstrate liner integrity, move forward with delineation.
  - Additionally, Liner inspection photographs and bottom photographs have been added to ensure the integrity of the liner.

**Closure Request**

After careful review, Pima requests that this incident ID: NRM2000939800, be closed. Devon has complied with the applicable closure requirements.

Should you have any questions or need additional information, please feel free to contact Gio Gomez at 575-964-7740 or [Gio@pimaoil.com](mailto:Gio@pimaoil.com).

Respectfully,



Gio Gomez

Project Manager

Pima Environmental Services, LLC

**Attachments**

Figures:

- 1- Location Map
- 2- Topographic Map
- 3- Karst Map
- 4- Site Map

Appendices:

- Appendix A- Referenced Water Surveys
- Appendix B- 48 Hour Notification
- Appendix C- Liner Inspection Form & Photographic Documentation



Pima Environmental Services

**Figures:**

1-Location Map

2-Topographic Map

3-Karst Map



4-Site Map

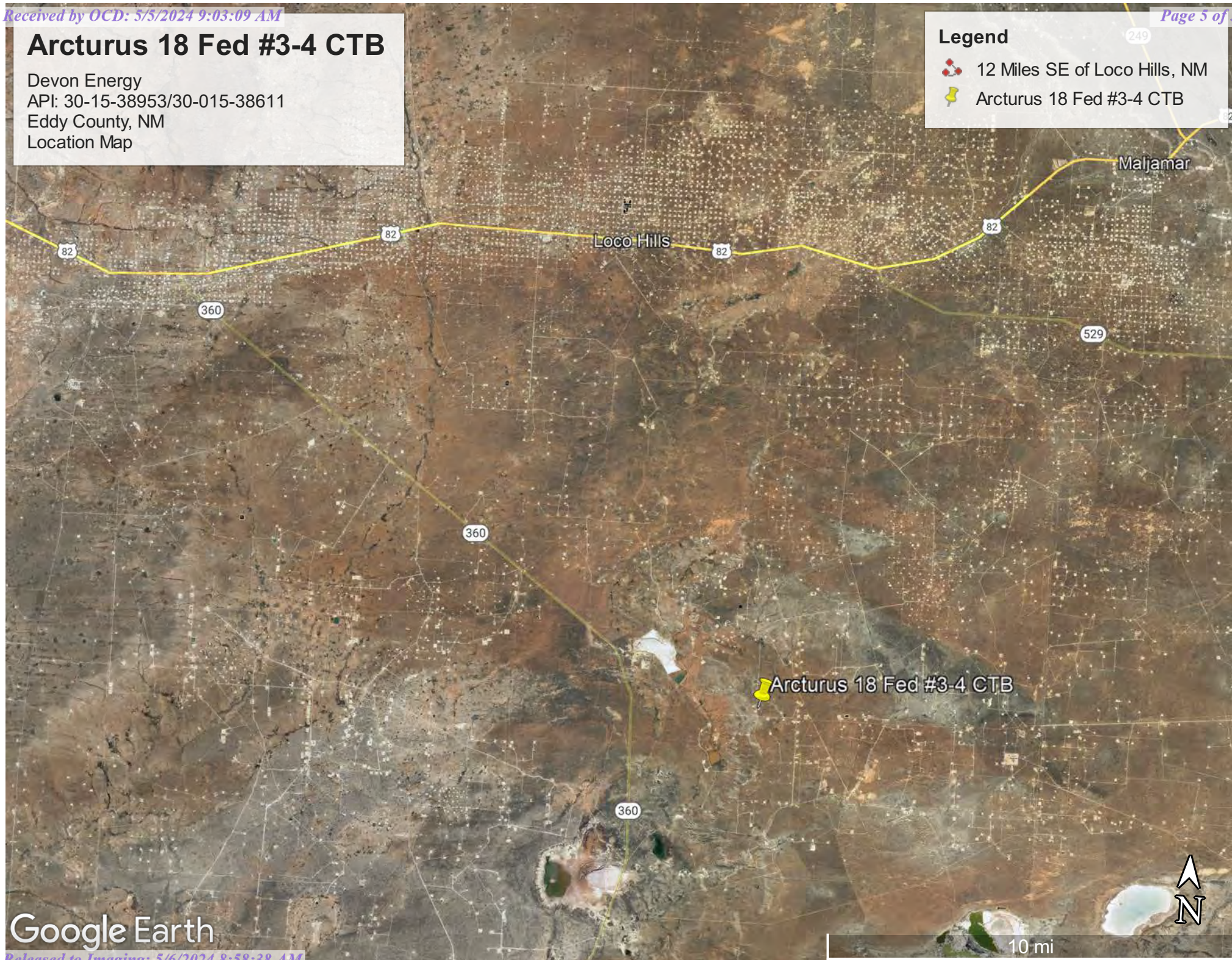


## Arcturus 18 Fed #3-4 CTB

Devon Energy  
API: 30-15-38953/30-015-38611  
Eddy County, NM  
Location Map

### Legend

-  12 Miles SE of Loco Hills, NM
-  Arcturus 18 Fed #3-4 CTB

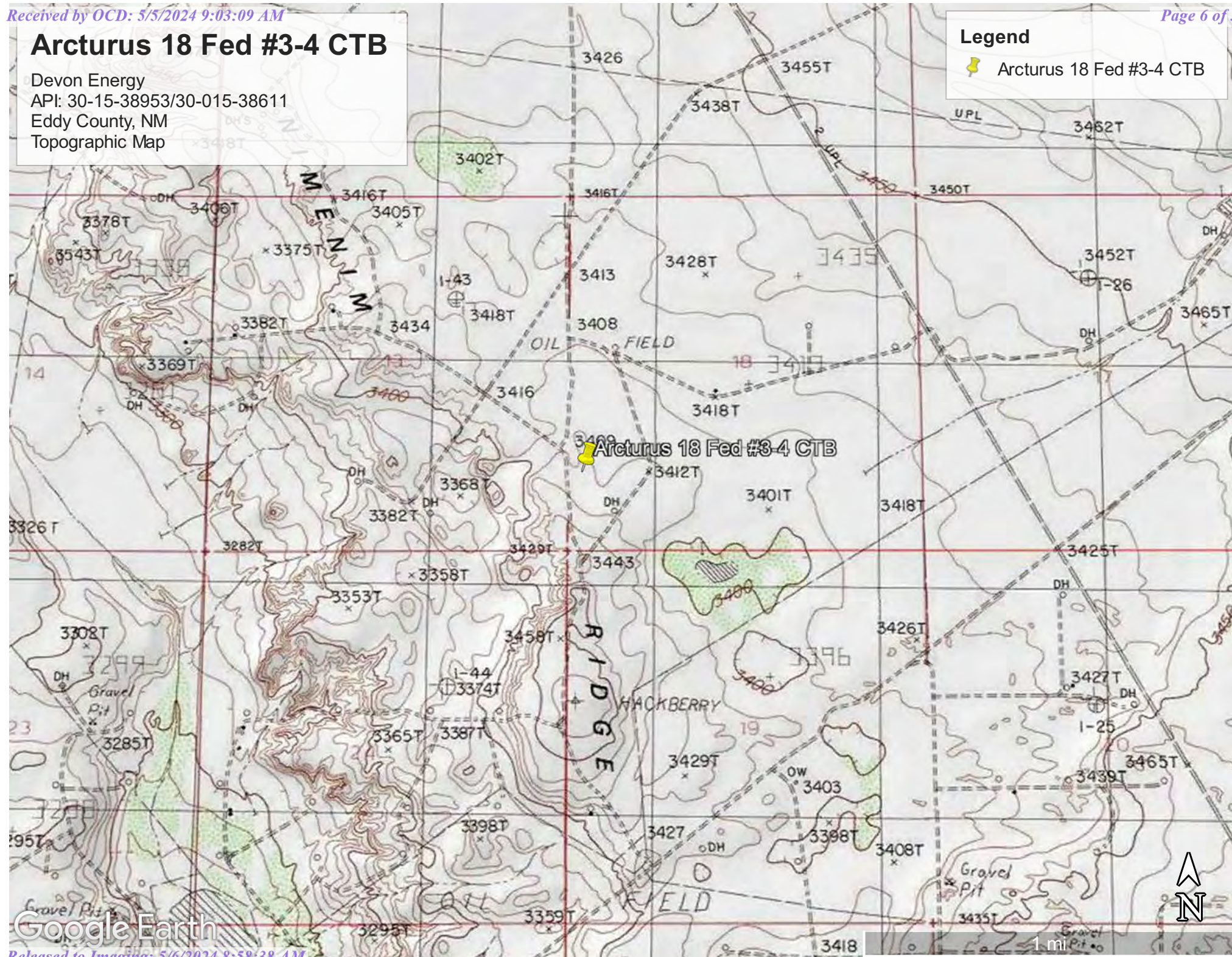


Google Earth



Devon Energy  
API: 30-15-38953/30-015-38611  
Eddy County, NM  
Topographic Map

📌 Arcturus 18 Fed #3-4 CTB







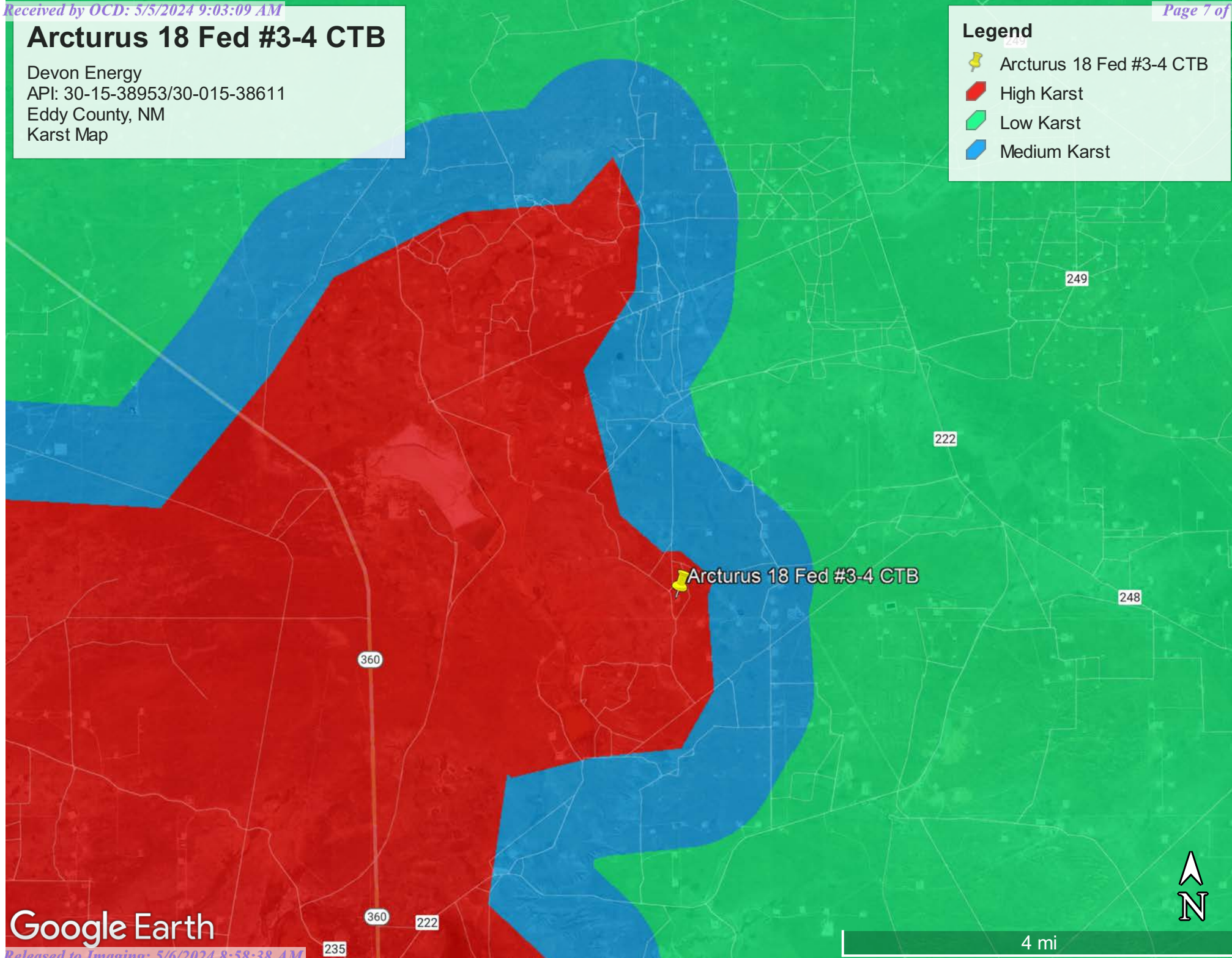


# Arcturus 18 Fed #3-4 CTB

Devon Energy  
API: 30-15-38953/30-015-38611  
Eddy County, NM  
Karst Map

## Legend

-  Arcturus 18 Fed #3-4 CTB
-  High Karst
-  Low Karst
-  Medium Karst





Google Earth



# Arcturus 18 Fed #3-4 CTB

Devon Energy  
API: 30-15-38953/30-015-38611  
Eddy County, NM  
Site Map

## Legend

-  2,769 Sq ft
-  Arcturus 18 Fed 3-4 CTB

Arcturus 18 Fed 3-4 CTB



200 ft

Google Earth





Pima Environmental Services

**Appendix A**

Water Surveys:

OSE

USGS

Surface Water Map

Wetlands Map



# New Mexico Office of the State Engineer

## Water Column/Average Depth to Water

(A CLW##### in the POD suffix indicates the POD has been replaced & no longer serves a water right file.)

(R=POD has been replaced,  
O=orphaned,  
C=the file is closed)

(quarters are 1=NW 2=NE 3=SW 4=SE)  
(quarters are smallest to largest) (NAD83 UTM in meters)

(In feet)

POD Number	Code	POD Sub-basin	County	Q 64	Q 16	Q 4	Sec	Tws	Rng	X	Y	Distance	DepthWell	DepthWater	Water Column
<a href="#">CP 00873 POD1</a>		CP	LE	1	1	19	19S	31E		601772	3613147*	563	340	180	160
<a href="#">CP 00357 POD1</a>		CP	ED	4	4	1	24	19S	30E	600667	3612631*	1434	630		
<a href="#">CP 00357 POD2</a>		CP	ED	4	3	1	24	19S	30E	600265	3612627*	1733	630		
<a href="#">CP 01907 POD1</a>		CP	ED	4	2	2	18	19S	31E	603017	3614737	1734			
<a href="#">CP 01943 POD1</a>		CP	ED	1	3	1	20	19S	31E	603217	3612883	1779	55		
<a href="#">CP 00722 POD2</a>		CP	ED	2	1	1	25	19S	30E	600276	3611620*	2477	350	65	285
<a href="#">CP 00822 POD1</a>		CP	LE	4	4	15	19S	30E		598148	3613516*	3488	90		
<a href="#">CP 00647 POD1</a>	O	CP	ED	4	2	2	15	19S	30E	598235	3614621*	3521	200	92	108
<a href="#">CP 01941 POD1</a>		CP	ED	3	2	2	29	19S	31E	604524	3611512	3621	55	54	1
<a href="#">CP 00829 POD1</a>		CP	LE	2	4	16	19S	31E		606165	3614009*	4543	120		
<a href="#">CP 00725 POD1</a>		CP	ED	1	3	3	28	19S	31E	604906	3610473*	4591	231		
<a href="#">CP 00722 POD4</a>		CP	LE	4	3	3	28	19S	31E	605059	3610260	4850	220	100	120
<a href="#">CP 00828 POD1</a>		CP	LE	1	1	35	19S	30E		598585	3609900*	4865	90		
<a href="#">CP 00722 POD1</a>		CP	LE	4	3	3	28	19S	31E	605106	3610273*	4874	200		
<a href="#">CP 00722 POD1</a>	R	CP	LE	4	3	3	28	19S	31E	605106	3610273*	4874	200		

Average Depth to Water: **98 feet**

Minimum Depth: **54 feet**

Maximum Depth: **180 feet**

**Record Count:** 15

**UTMNAD83 Radius Search (in meters):**

**Easting (X):** 601632.14

**Northing (Y):** 3613692.93

**Radius:** 5000

\*UTM location was derived from PLSS - see Help

The data is furnished by the NMOSE/ISC and is accepted by the recipient with the expressed understanding that the OSE/ISC make no warranties, expressed or implied, concerning the accuracy, completeness, reliability, usability, or suitability for any particular purpose of the data.

11/9/23 5:40 PM

WATER COLUMN/ AVERAGE DEPTH TO WATER





# New Mexico Office of the State Engineer

## Point of Diversion Summary

(quarters are 1=NW 2=NE 3=SW 4=SE)  
(quarters are smallest to largest) (NAD83 UTM in meters)

<b>Well Tag</b>	<b>POD Number</b>	<b>Q64 Q16 Q4</b>	<b>Sec</b>	<b>Tws</b>	<b>Rng</b>	<b>X</b>	<b>Y</b>
	CP 00873 POD1	1 1 19	19S	31E	601772	3613147*	

---

**Driller License:** 421 **Driller Company:** GLENN'S WATER WELL SERVICE  
**Driller Name:** GLENN, CLARK A."CORKY"

**Drill Start Date:** 01/02/1998 **Drill Finish Date:** 01/05/1998 **Plug Date:**  
**Log File Date:** 01/15/1998 **PCW Rev Date:** **Source:** Shallow  
**Pump Type:** **Pipe Discharge Size:** **Estimated Yield:** 50 GPM  
**Casing Size:** 6.62 **Depth Well:** 340 feet **Depth Water:** 180 feet

---

<b>Water Bearing Stratifications:</b>	<b>Top</b>	<b>Bottom</b>	<b>Description</b>
	240	320	Shallow Alluvium/Basin Fill

---

<b>Casing Perforations:</b>	<b>Top</b>	<b>Bottom</b>
	226	340

---

<b>Meter Number:</b>	805	<b>Meter Make:</b>	MASTER
<b>Meter Serial Number:</b>	1748543	<b>Meter Multiplier:</b>	100.0000
<b>Number of Dials:</b>	6	<b>Meter Type:</b>	Diversion
<b>Unit of Measure:</b>	Gallons	<b>Return Flow Percent:</b>	
<b>Usage Multiplier:</b>		<b>Reading Frequency:</b>	Monthly

---

**Meter Readings (in Acre-Feet)**

<b>Read Date</b>	<b>Year</b>	<b>Mtr Reading</b>	<b>Flag</b>	<b>Rdr</b>	<b>Comment</b>	<b>Mtr Amount Online</b>
01/01/1999	1999	37400	A	fm		0
01/15/1999	1999	43541	A	fm		1.885
04/27/2000	2000	14849	R	jw	Meter Rollover	298.083
07/31/2000	2000	24399	A	jw		2.931

---

<b>**YTD Meter Amounts:</b>	<b>Year</b>	<b>Amount</b>
	1999	1.885
	2000	301.014

\*UTM location was derived from PLSS - see Help

The data is furnished by the NMOSE/ISC and is accepted by the recipient with the expressed understanding that the OSE/ISC make no warranties, expressed or implied, concerning the accuracy, completeness, reliability, usability, or suitability for any particular purpose of the data.

4/25/24 12:26 PM

POINT OF DIVERSION SUMMARY



# Arcturus 18 Fed #3-4 CTB

Devon Energy  
API: 30-15-38953/30-015-38611  
Eddy County, NM  
CP-00873-POD 1 Map

## Legend

- 0.32 of a mile
- Arcturus 18 Fed #3-4 CTB
- CP-00873-POD 1







[USGS Home](#)  
[Contact USGS](#)  
[Search USGS](#)

## National Water Information System: Web Interface

USGS Water Resources

Data Category:


Groundwater

Geographic Area:

United States

GO

Click to hide News Bulletins

- Explore the *NEW* [USGS National Water Dashboard](#) interactive map to access real-time water data from over 13,500 stations nationwide.
- [Full News](#) 

Groundwater levels for the Nation

 Important: [Next Generation Monitoring Location Page](#)

## Search Results -- 1 sites found

site\_no list =

- 323810103554201

Minimum number of levels = 1

[Save file of selected sites](#) to local disk for future upload

## USGS 323810103554201 19S.30E.25.12133

Available data for this site

Groundwater: Field measurements

GO

Eddy County, New Mexico

Hydrologic Unit Code 13060011

Latitude 32°38'10", Longitude 103°55'42" NAD27

Land-surface elevation 3,248 feet above NAVD88

The depth of the well is 42 feet below land surface.

This well is completed in the Other aquifers (N9999OTHER) national aquifer.

This well is completed in the Rustler Formation (312RSLR) local aquifer.

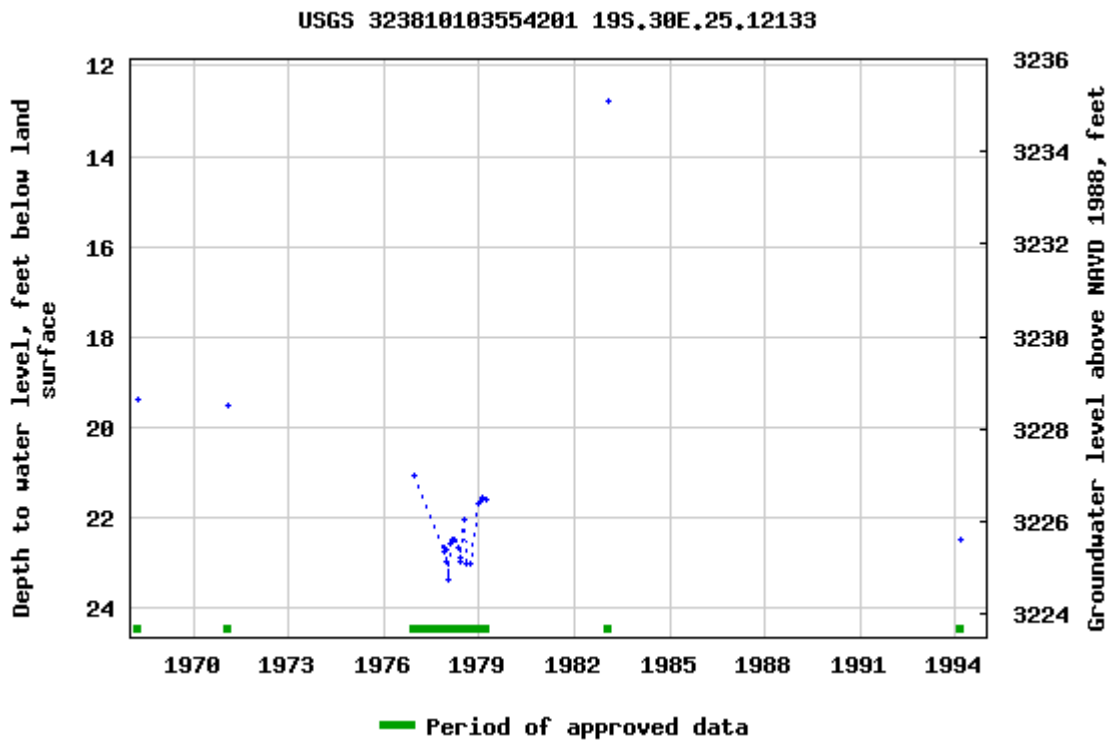
### Output formats

[Table of data](#)

[Tab-separated data](#)

[Graph of data](#)

[Reselect period](#)



Breaks in the plot represent a gap of at least one year between field measurements.  
[Download a presentation-quality graph](#)

---

[Questions or Comments](#)

[Automated retrievals](#)

[Help](#)

[Data Tips](#)

[Explanation of terms](#)

[Subscribe for system changes](#)

[News](#)

[Accessibility](#)

[FOIA](#)

[Privacy](#)

[Policies and Notices](#)

[U.S. Department of the Interior](#) | [U.S. Geological Survey](#)

**Title: Groundwater for USA: Water Levels**

**URL: <https://nwis.waterdata.usgs.gov/nwis/gwlevels?>**



Page Contact Information: [USGS Water Data Support Team](#)

Page Last Modified: 2023-11-09 19:35:45 EST

0.62 0.56 nadww01

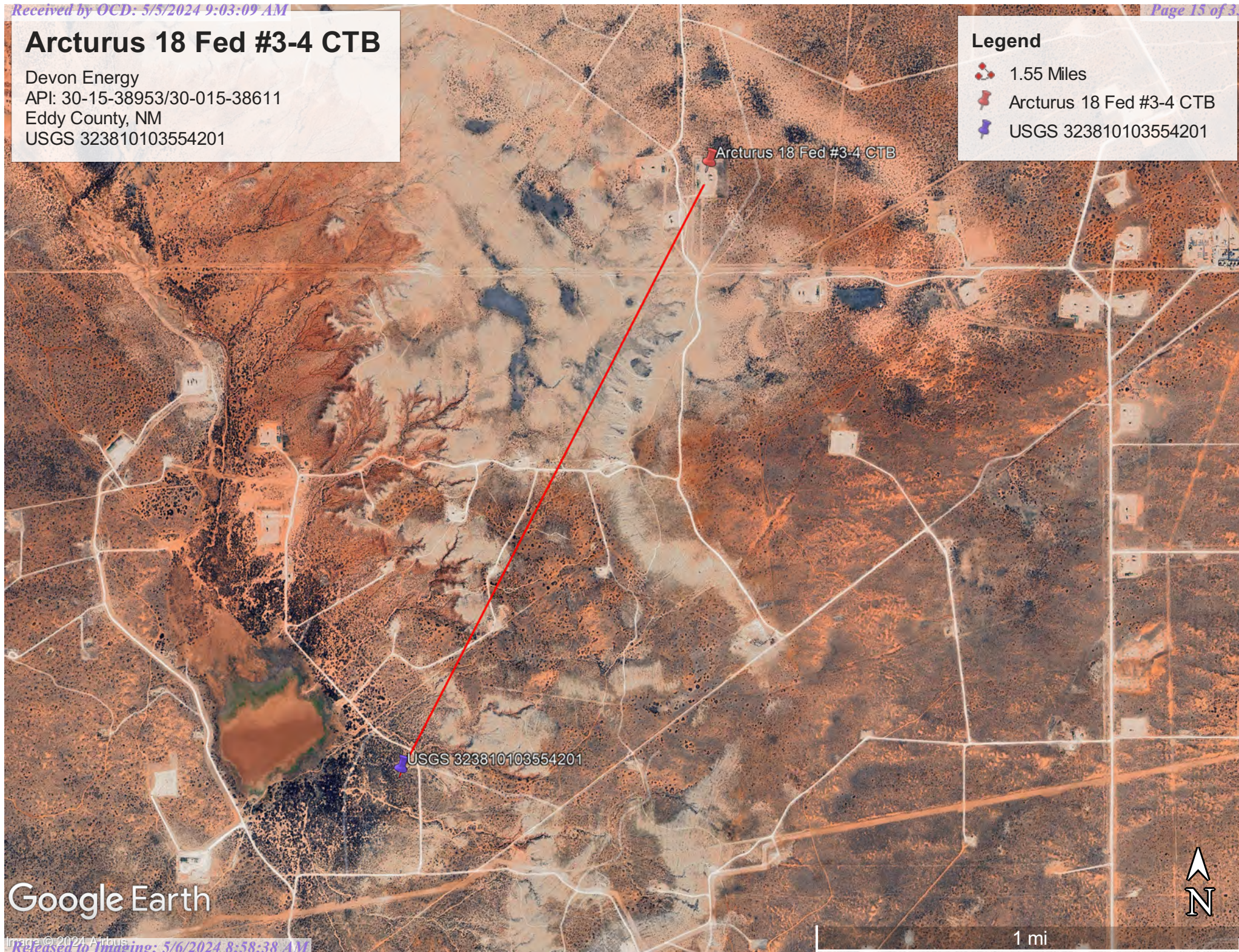


## Arcturus 18 Fed #3-4 CTB

Devon Energy  
API: 30-15-38953/30-015-38611  
Eddy County, NM  
USGS 323810103554201

### Legend

- 1.55 Miles
- Arcturus 18 Fed #3-4 CTB
- USGS 323810103554201



Google Earth

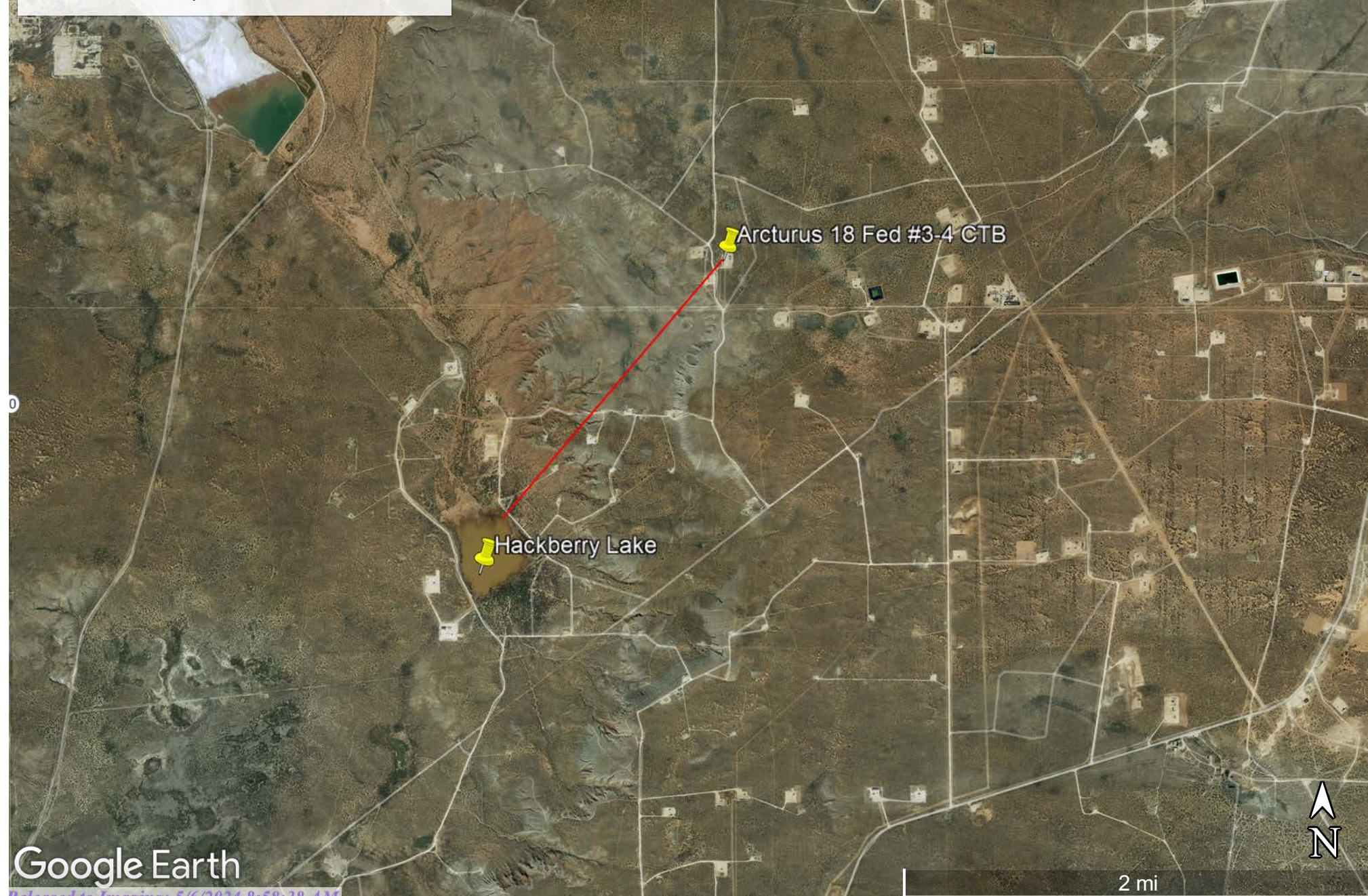


# Arcturus 18 Fed #3-4 CTB

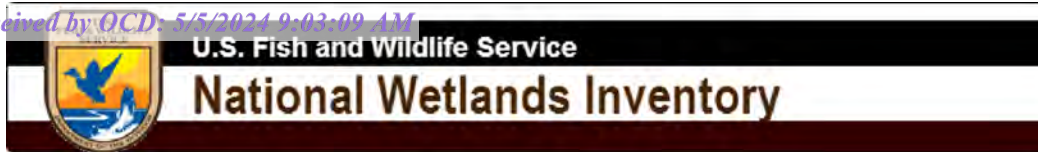
Devon Energy  
API: 30-15-38953/30-015-38611  
Eddy County, NM  
Surface Water Map

## Legend

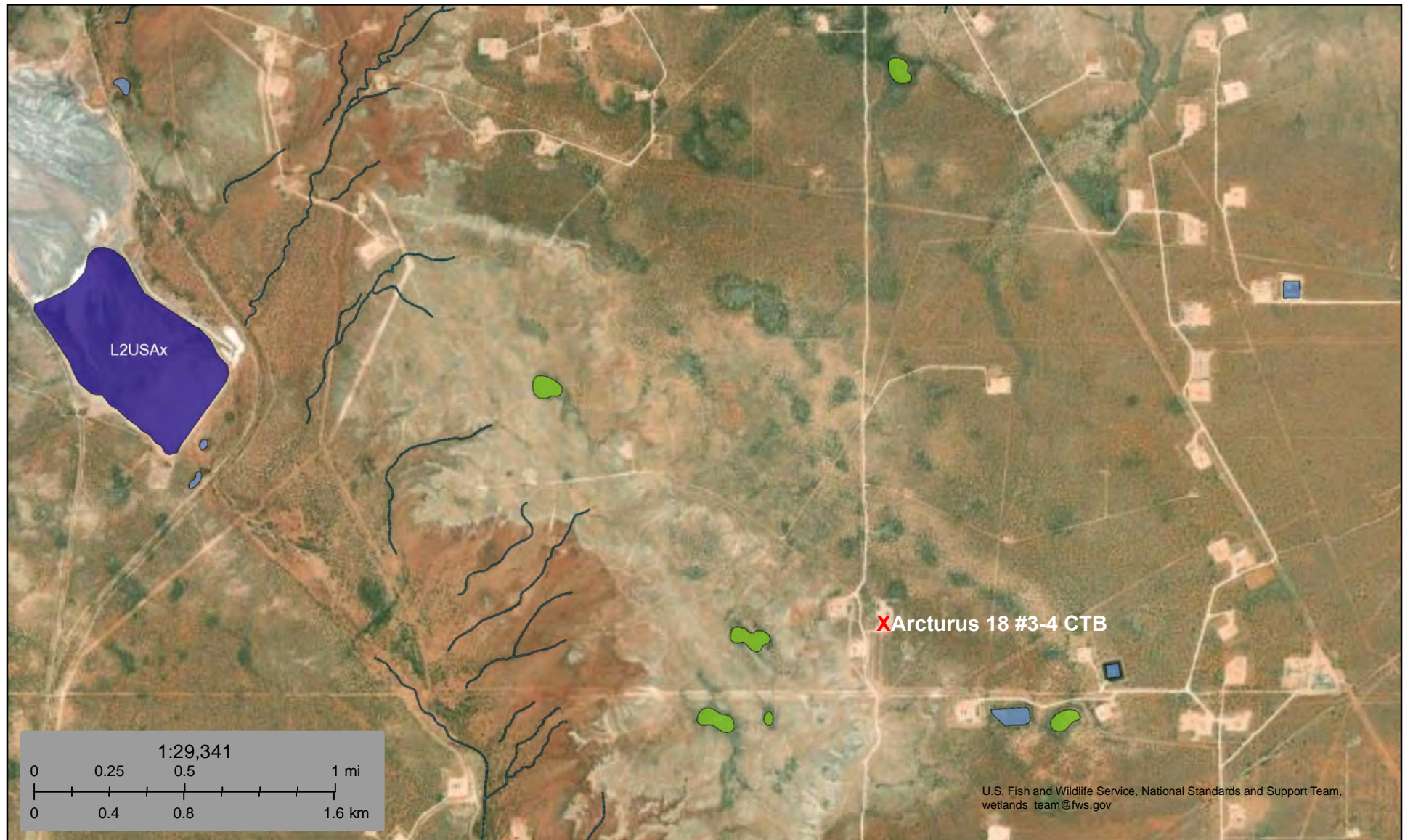
-  1.46 Miles
-  Arcturus 18 Fed #3-4 CTB







## Wetlands Map



November 10, 2023

**Wetlands**

- Estuarine and Marine Deepwater
- Estuarine and Marine Wetland

- Freshwater Emergent Wetland
- Freshwater Forested/Shrub Wetland
- Freshwater Pond

- Lake
- Other
- Riverine

This map is for general reference only. The US Fish and Wildlife Service is not responsible for the accuracy or currentness of the base data shown on this map. All wetlands related data should be used in accordance with the layer metadata found on the Wetlands Mapper web site.



Pima Environmental Services

## **Appendix B**

### 48-Hour Notification



**lynsey@pimaoil.com**

---

**From:** Woodall, Dale <Dale.Woodall@dvn.com>  
**Sent:** Thursday, April 25, 2024 12:43 PM  
**To:** 'Gio PimaOil'; Lynsey Pima Oil  
**Subject:** FW: [EXTERNAL] The Oil Conservation Division (OCD) has accepted the application, Application ID: 337692

Dale Woodall  
**Environmental Professional**  
**Hobbs, NM**  
Office: 575-748-1838  
Mobile: 405-318-4697  
[Dale.Woodall@dvn.com](mailto:Dale.Woodall@dvn.com)

---

**From:** OCDOnline@state.nm.us <OCDOnline@state.nm.us>  
**Sent:** Thursday, April 25, 2024 12:42 PM  
**To:** Woodall, Dale <Dale.Woodall@dvn.com>  
**Subject:** [EXTERNAL] The Oil Conservation Division (OCD) has accepted the application, Application ID: 337692

To whom it may concern (c/o Dale Woodall for DEVON ENERGY PRODUCTION COMPANY, LP),

The OCD has received the submitted *Notification for Liner Inspection for a Release* (C-141L), for incident ID (n#) nRM2000939800.

The liner inspection is expected to take place:

**When:** 04/29/2024 @ 08:20  
**Where:** M-18-19S-31E 0 FNL 0 FEL (32.656205, -103.916266)

**Additional Information:** visually inspected for any pinholes or punctures, will be conducted by Andrew Franco 806-200-0054

**Additional Instructions:** M-18-19S-31E, ( 32.656205, -103.916266 NAD83) From the intersection of Shugart Rd County Rd 222 and County Rd 249, travel north on Shugart Rd for 0.04 of a mile, turn west on lease Rd for 2.67 miles, turn south on lease Rd for 1.84 miles, turn west on lease Rd for 1.05 miles, turn south on lease Rd for 0.42 of a mile, arriving to location on the left.

An OCD representative may be available onsite at the date and time reported. In the absence or presence of an OCD representative, liner inspection pursuant to 19.15.29.11.A(5)(a) NMAC is required. Should there be a change in the scheduled date and time of the sampling event, then another notification should be resubmitted through OCD permitting as soon as possible.

- **Failure to notify the OCD of liner inspections including any changes in date/time per the requirements of 19.15.29.11.A(5)(a)(ii) NMAC, may result in the inspection not being accepted.**

If you have any questions regarding this application, or don't know why you have received this email, please contact us.

**New Mexico Energy, Minerals and Natural Resources Department**

1220 South St. Francis Drive

Santa Fe, NM 87505

Confidentiality Warning: This message and any attachments are intended only for the use of the intended recipient(s), are confidential, and may be privileged. If you are not the intended recipient, you are hereby notified that any review, retransmission, conversion to hard copy, copying, circulation or other use of all or any portion of this message and any attachments is strictly prohibited. If you are not the intended recipient, please notify the sender immediately by return e-mail, and delete this message and any attachments from your system.





Pima Environmental Services

## **Appendix C**

Liner Inspection Form

Photographic Documentation



Pima Environmental Services, LLC

**Liner Inspection Form**Company Name: Devon EnergySite: Arcturus 18 Fed #3-4 CTBLat/Long: 32.656205, -103.916266NMOCD Incident ID  
& Incident Date: NRM2000939800 8/4/20192-Day Notification  
Sent: via Email by Dale Woodall on OCD portal 4/23/2024Inspection Date: 4/29/2024

Liner Type:      Earthen w/liner                      Earthen no liner                      Polystar

**Steel w/poly liner**                      Steel w/spray epoxy                      No Liner

Other: \_\_\_\_\_

Visualization	Yes	No	Comments
Is there a tear in the liner?		X	
Are there holes in the liner?		X	
Is the liner retaining any fluids?	X		Fluid from power washing the Liner
Does the liner have integrity to contain a leak?	X		

Comments: \_\_\_\_\_

Inspector Name: Andrew Franco      Inspector Signature: Andrew Franco





## SITE PHOTOGRAPHS

### DEVON ENERGY

#### Arcturus 18 3-4 CTB

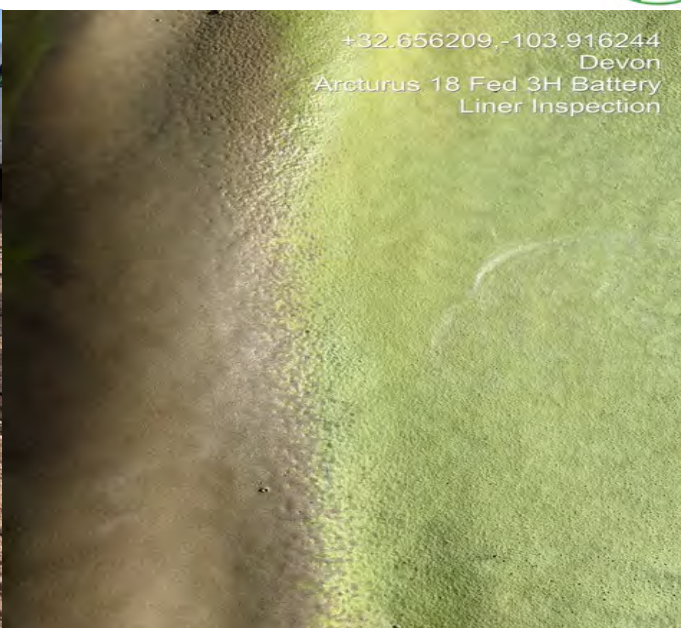
#### Liner Inspection



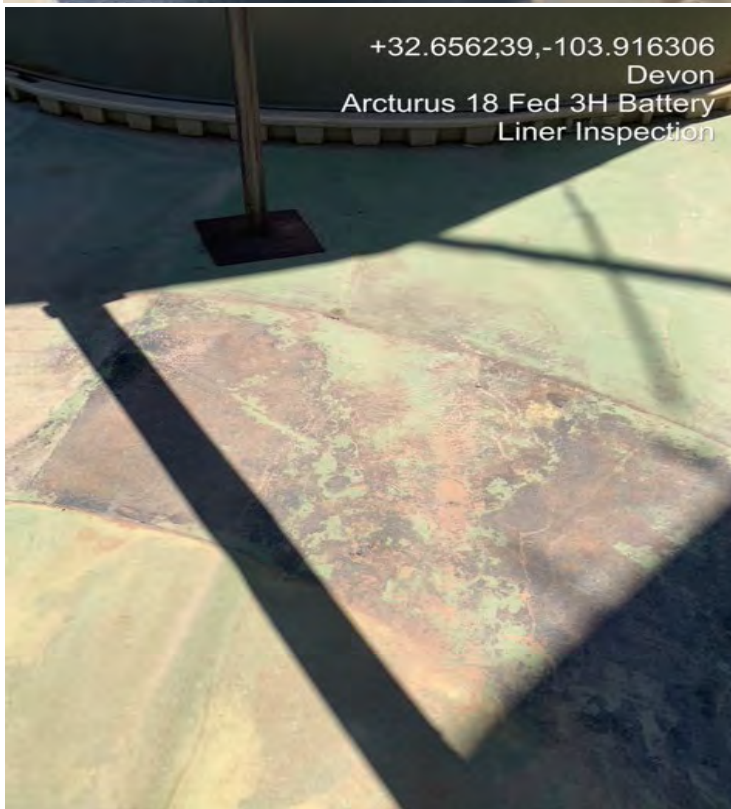








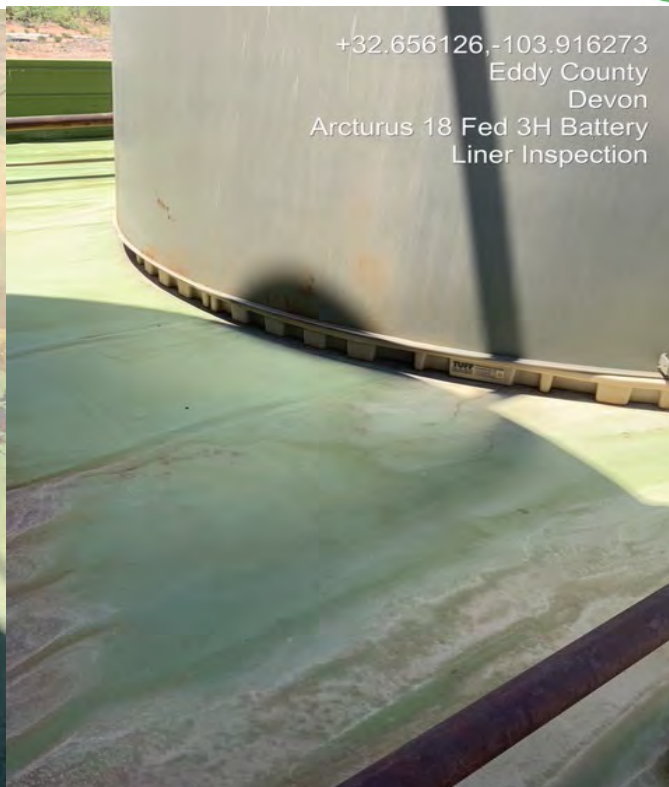




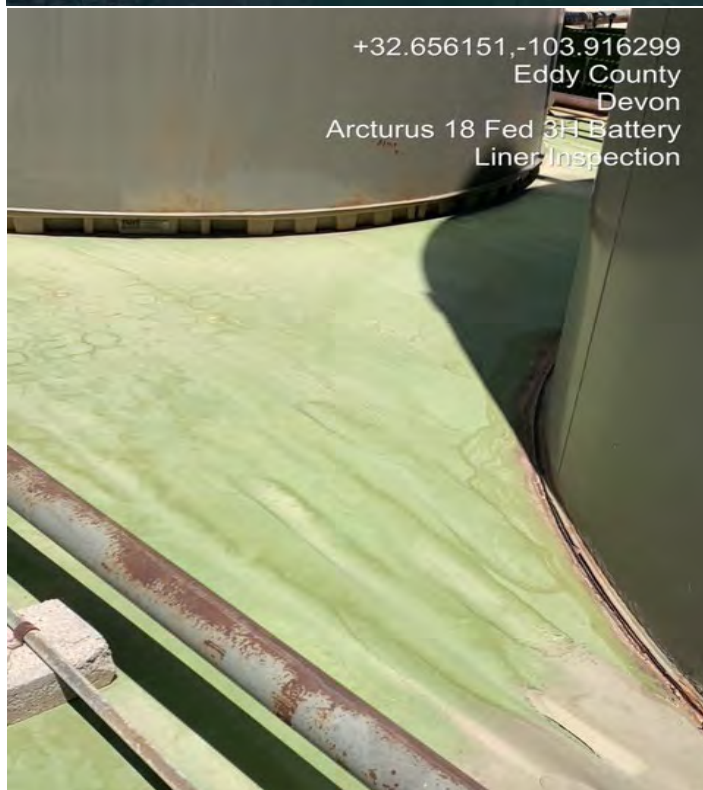




+32.656126,-103.916273  
Eddy County  
Devon  
Arcturus 18 Fed 3H Battery  
Liner Inspection



+32.656126,-103.916273  
Eddy County  
Devon  
Arcturus 18 Fed 3H Battery  
Liner Inspection



+32.656151,-103.916299  
Eddy County  
Devon  
Arcturus 18 Fed 3H Battery  
Liner Inspection



+32.656156,-103.916317  
Eddy County  
Devon  
Arcturus 18 Fed 3H Battery  
Liner Inspection

**District I**  
1625 N. French Dr., Hobbs, NM 88240  
Phone:(575) 393-6161 Fax:(575) 393-0720  
**District II**  
811 S. First St., Artesia, NM 88210  
Phone:(575) 748-1283 Fax:(575) 748-9720  
**District III**  
1000 Rio Brazos Rd., Aztec, NM 87410  
Phone:(505) 334-6178 Fax:(505) 334-6170  
**District IV**  
1220 S. St Francis Dr., Santa Fe, NM 87505  
Phone:(505) 476-3470 Fax:(505) 476-3462

**State of New Mexico**  
**Energy, Minerals and Natural Resources**  
**Oil Conservation Division**  
**1220 S. St Francis Dr.**  
**Santa Fe, NM 87505**

QUESTIONS  
  
Action 340868

QUESTIONS

Operator: DEVON ENERGY PRODUCTION COMPANY, LP 333 West Sheridan Ave. Oklahoma City, OK 73102	OGRID: 6137
	Action Number: 340868
	Action Type: [C-141] Remediation Closure Request C-141 (C-141-v-Closure)

QUESTIONS

Prerequisites	
Incident ID (n#)	nRM2000939800
Incident Name	NRM2000939800 ARCTURUS 18 FED #3-4 CTB @ 0
Incident Type	Produced Water Release
Incident Status	Remediation Closure Report Received

Location of Release Source	
Please answer all the questions in this group.	
Site Name	ARCTURUS 18 FED #3-4 CTB
Date Release Discovered	08/04/2019
Surface Owner	Federal

Incident Details	
Please answer all the questions in this group.	
Incident Type	Produced Water Release
Did this release result in a fire or is the result of a fire	No
Did this release result in any injuries	No
Has this release reached or does it have a reasonable probability of reaching a watercourse	No
Has this release endangered or does it have a reasonable probability of endangering public health	No
Has this release substantially damaged or will it substantially damage property or the environment	No
Is this release of a volume that is or may with reasonable probability be detrimental to fresh water	No

Nature and Volume of Release	
Material(s) released, please answer all that apply below. Any calculations or specific justifications for the volumes provided should be attached to the follow-up C-141 submission.	
Crude Oil Released (bbls) Details	Not answered.
Produced Water Released (bbls) Details	Cause: Equipment Failure   Tank (Any)   Produced Water   Released: 252 BBL   Recovered: 252 BBL   Lost: 0 BBL.
Is the concentration of chloride in the produced water >10,000 mg/l	No
Condensate Released (bbls) Details	Not answered.
Natural Gas Vented (Mcf) Details	Not answered.
Natural Gas Flared (Mcf) Details	Not answered.
Other Released Details	Not answered.
Are there additional details for the questions above (i.e. any answer containing Other, Specify, Unknown, and/or Fire, or any negative lost amounts)	Not answered.



**District I**  
1625 N. French Dr., Hobbs, NM 88240  
Phone:(575) 393-6161 Fax:(575) 393-0720

**District II**  
811 S. First St., Artesia, NM 88210  
Phone:(575) 748-1283 Fax:(575) 748-9720

**District III**  
1000 Rio Brazos Rd., Aztec, NM 87410  
Phone:(505) 334-6178 Fax:(505) 334-6170

**District IV**  
1220 S. St Francis Dr., Santa Fe, NM 87505  
Phone:(505) 476-3470 Fax:(505) 476-3462

**State of New Mexico**  
**Energy, Minerals and Natural Resources**  
**Oil Conservation Division**  
**1220 S. St Francis Dr.**  
**Santa Fe, NM 87505**

QUESTIONS, Page 2

Action 340868

**QUESTIONS (continued)**

Operator: DEVON ENERGY PRODUCTION COMPANY, LP 333 West Sheridan Ave. Oklahoma City, OK 73102	OGRID:	6137
	Action Number:	340868
	Action Type:	[C-141] Remediation Closure Request C-141 (C-141-v-Closure)

**QUESTIONS**

<b>Nature and Volume of Release (continued)</b>	
Is this a gas only submission (i.e. only significant Mcf values reported)	No, according to supplied volumes this does not appear to be a "gas only" report.
Was this a major release as defined by Subsection A of 19.15.29.7 NMAC	Yes
Reasons why this would be considered a submission for a notification of a major release	From paragraph A. "Major release" determine using: (1) an unauthorized release of a volume, excluding gases, of 25 barrels or more.
With the implementation of the 19.15.27 NMAC (05/25/2021), venting and/or flaring of natural gas (i.e. gas only) are to be submitted on the C-129 form.	

**Initial Response**

The responsible party must undertake the following actions immediately unless they could create a safety hazard that would result in injury.

The source of the release has been stopped	True
The impacted area has been secured to protect human health and the environment	True
Released materials have been contained via the use of berms or dikes, absorbent pads, or other containment devices	True
All free liquids and recoverable materials have been removed and managed appropriately	True
If all the actions described above have not been undertaken, explain why	Not answered.

Per Paragraph (4) of Subsection B of 19.15.29.8 NMAC the responsible party may commence remediation immediately after discovery of a release. If remediation has begun, please prepare and attach a narrative of actions to date in the follow-up C-141 submission. If remedial efforts have been successfully completed or if the release occurred within a lined containment area (see Subparagraph (a) of Paragraph (5) of Subsection A of 19.15.29.11 NMAC), please prepare and attach all information needed for closure evaluation in the follow-up C-141 submission.

I hereby certify that the information given above is true and complete to the best of my knowledge and understand that pursuant to OCD rules and regulations all operators are required to report and/or file certain release notifications and perform corrective actions for releases which may endanger public health or the environment. The acceptance of a C-141 report by the OCD does not relieve the operator of liability should their operations have failed to adequately investigate and remediate contamination that pose a threat to groundwater, surface water, human health or the environment. In addition, OCD acceptance of a C-141 report does not relieve the operator of responsibility for compliance with any other federal, state, or local laws and/or regulations.

I hereby agree and sign off to the above statement	Name: Dale Woodall Title: EHS Professional Email: Dale.Woodall@dmv.com Date: 05/05/2024
--	--

**District I**

1625 N. French Dr., Hobbs, NM 88240  
Phone:(575) 393-6161 Fax:(575) 393-0720

**District II**

811 S. First St., Artesia, NM 88210  
Phone:(575) 748-1283 Fax:(575) 748-9720

**District III**

1000 Rio Brazos Rd., Aztec, NM 87410  
Phone:(505) 334-6178 Fax:(505) 334-6170

**District IV**

1220 S. St Francis Dr., Santa Fe, NM 87505  
Phone:(505) 476-3470 Fax:(505) 476-3462

**State of New Mexico**  
**Energy, Minerals and Natural Resources**  
**Oil Conservation Division**  
**1220 S. St Francis Dr.**  
**Santa Fe, NM 87505**

QUESTIONS, Page 3

Action 340868

**QUESTIONS (continued)**

Operator: DEVON ENERGY PRODUCTION COMPANY, LP 333 West Sheridan Ave. Oklahoma City, OK 73102	OGRID:	6137
	Action Number:	340868
	Action Type:	[C-141] Remediation Closure Request C-141 (C-141-v-Closure)

**QUESTIONS****Site Characterization**

Please answer all the questions in this group (only required when seeking remediation plan approval and beyond). This information must be provided to the appropriate district office no later than 90 days after the release discovery date.

What is the shallowest depth to groundwater beneath the area affected by the release in feet below ground surface (ft bgs)	Between 100 and 500 (ft.)
What method was used to determine the depth to ground water	NM OSE iWaters Database Search
Did this release impact groundwater or surface water	No
<b>What is the minimum distance, between the closest lateral extents of the release and the following surface areas:</b>	
A continuously flowing watercourse or any other significant watercourse	Greater than 5 (mi.)
Any lakebed, sinkhole, or playa lake (measured from the ordinary high-water mark)	Greater than 5 (mi.)
An occupied permanent residence, school, hospital, institution, or church	Greater than 5 (mi.)
A spring or a private domestic fresh water well used by less than five households for domestic or stock watering purposes	Greater than 5 (mi.)
Any other fresh water well or spring	Greater than 5 (mi.)
Incorporated municipal boundaries or a defined municipal fresh water well field	Greater than 5 (mi.)
A wetland	Between 1 and 5 (mi.)
A subsurface mine	Greater than 5 (mi.)
An (non-karst) unstable area	Greater than 5 (mi.)
Categorize the risk of this well / site being in a karst geology	High
A 100-year floodplain	Greater than 5 (mi.)
Did the release impact areas not on an exploration, development, production, or storage site	No

**Remediation Plan**

Please answer all the questions that apply or are indicated. This information must be provided to the appropriate district office no later than 90 days after the release discovery date.

Requesting a remediation plan approval with this submission	Yes
Attach a comprehensive report demonstrating the lateral and vertical extents of soil contamination associated with the release have been determined, pursuant to 19.15.29.11 NMAC and 19.15.29.13 NMAC.	
Have the lateral and vertical extents of contamination been fully delineated	Yes
Was this release entirely contained within a lined containment area	Yes
Per Subsection B of 19.15.29.11 NMAC unless the site characterization report includes completed efforts at remediation, the report must include a proposed remediation plan in accordance with 19.15.29.12 NMAC, which includes the anticipated timelines for beginning and completing the remediation.	
On what estimated date will the remediation commence	04/29/2024
On what date will (or did) the final sampling or liner inspection occur	04/29/2024
On what date will (or was) the remediation complete(d)	04/29/2024
What is the estimated surface area (in square feet) that will be remediated	0
What is the estimated volume (in cubic yards) that will be remediated	0
These estimated dates and measurements are recognized to be the best guess or calculation at the time of submission and may (be) change(d) over time as more remediation efforts are completed.	
The OCD recognizes that proposed remediation measures may have to be minimally adjusted in accordance with the physical realities encountered during remediation. If the responsible party has any need to significantly deviate from the remediation plan proposed, then it should consult with the division to determine if another remediation plan submission is required.	



**District I**

1625 N. French Dr., Hobbs, NM 88240  
Phone:(575) 393-6161 Fax:(575) 393-0720

**District II**

811 S. First St., Artesia, NM 88210  
Phone:(575) 748-1283 Fax:(575) 748-9720

**District III**

1000 Rio Brazos Rd., Aztec, NM 87410  
Phone:(505) 334-6178 Fax:(505) 334-6170

**District IV**

1220 S. St Francis Dr., Santa Fe, NM 87505  
Phone:(505) 476-3470 Fax:(505) 476-3462

**State of New Mexico**  
**Energy, Minerals and Natural Resources**  
**Oil Conservation Division**  
**1220 S. St Francis Dr.**  
**Santa Fe, NM 87505**

QUESTIONS, Page 4

Action 340868

**QUESTIONS (continued)**

Operator: DEVON ENERGY PRODUCTION COMPANY, LP 333 West Sheridan Ave. Oklahoma City, OK 73102	OGRID:	6137
	Action Number:	340868
	Action Type:	[C-141] Remediation Closure Request C-141 (C-141-v-Closure)

**QUESTIONS**

<b>Remediation Plan (continued)</b>	
<i>Please answer all the questions that apply or are indicated. This information must be provided to the appropriate district office no later than 90 days after the release discovery date.</i>	
<b>This remediation will (or is expected to) utilize the following processes to remediate / reduce contaminants:</b>	
<i>(Select all answers below that apply.)</i>	
Is (or was) there affected material present needing to be removed	Yes
Is (or was) there a power wash of the lined containment area (to be) performed	Yes
OTHER (Non-listed remedial process)	No
<i>Per Subsection B of 19.15.29.11 NMAC unless the site characterization report includes completed efforts at remediation, the report must include a proposed remediation plan in accordance with 19.15.29.12 NMAC, which includes the anticipated timelines for beginning and completing the remediation.</i>	
I hereby certify that the information given above is true and complete to the best of my knowledge and understand that pursuant to OCD rules and regulations all operators are required to report and/or file certain release notifications and perform corrective actions for releases which may endanger public health or the environment. The acceptance of a C-141 report by the OCD does not relieve the operator of liability should their operations have failed to adequately investigate and remediate contamination that pose a threat to groundwater, surface water, human health or the environment. In addition, OCD acceptance of a C-141 report does not relieve the operator of responsibility for compliance with any other federal, state, or local laws and/or regulations.	
I hereby agree and sign off to the above statement	Name: Dale Woodall Title: EHS Professional Email: Dale.Woodall@dmn.com Date: 05/05/2024
<i>The OCD recognizes that proposed remediation measures may have to be minimally adjusted in accordance with the physical realities encountered during remediation. If the responsible party has any need to significantly deviate from the remediation plan proposed, then it should consult with the division to determine if another remediation plan submission is required.</i>	

**District I**

1625 N. French Dr., Hobbs, NM 88240  
Phone:(575) 393-6161 Fax:(575) 393-0720

**District II**

811 S. First St., Artesia, NM 88210  
Phone:(575) 748-1283 Fax:(575) 748-9720

**District III**

1000 Rio Brazos Rd., Aztec, NM 87410  
Phone:(505) 334-6178 Fax:(505) 334-6170

**District IV**

1220 S. St Francis Dr., Santa Fe, NM 87505  
Phone:(505) 476-3470 Fax:(505) 476-3462

**State of New Mexico**  
**Energy, Minerals and Natural Resources**  
**Oil Conservation Division**  
**1220 S. St Francis Dr.**  
**Santa Fe, NM 87505**

QUESTIONS, Page 6

Action 340868

**QUESTIONS (continued)**

Operator: DEVON ENERGY PRODUCTION COMPANY, LP 333 West Sheridan Ave. Oklahoma City, OK 73102	OGRID:	6137
	Action Number:	340868
	Action Type:	[C-141] Remediation Closure Request C-141 (C-141-v-Closure)

**QUESTIONS**

<b>Liner Inspection Information</b>	
Last liner inspection notification (C-141L) recorded	337692
Liner inspection date pursuant to Subparagraph (a) of Paragraph (5) of Subsection A of 19.15.29.11 NMAC	04/29/2024
Was all the impacted materials removed from the liner	Yes
What was the liner inspection surface area in square feet	2770

**Remediation Closure Request**

Only answer the questions in this group if seeking remediation closure for this release because all remediation steps have been completed.

Requesting a remediation closure approval with this submission	Yes
Have the lateral and vertical extents of contamination been fully delineated	Yes
Was this release entirely contained within a lined containment area	Yes
What was the total surface area (in square feet) remediated	0
What was the total volume (cubic yards) remediated	0
Summarize any additional remediation activities not included by answers (above)	the liner was inspected and there were no holes

The responsible party must attach information demonstrating they have complied with all applicable closure requirements and any conditions or directives of the OCD. This demonstration should be in the form of a comprehensive report (in .pdf format) including a scaled site map, sampling diagrams, relevant field notes, photographs of any excavation prior to backfilling, laboratory data including chain of custody documents of final sampling, and a narrative of the remedial activities. Refer to 19.15.29.12 NMAC.

I hereby certify that the information given above is true and complete to the best of my knowledge and understand that pursuant to OCD rules and regulations all operators are required to report and/or file certain release notifications and perform corrective actions for releases which may endanger public health or the environment. The acceptance of a C-141 report by the OCD does not relieve the operator of liability should their operations have failed to adequately investigate and remediate contamination that pose a threat to groundwater, surface water, human health or the environment. In addition, OCD acceptance of a C-141 report does not relieve the operator of responsibility for compliance with any other federal, state, or local laws and/or regulations. The responsible party acknowledges they must substantially restore, reclaim, and re-vegetate the impacted surface area to the conditions that existed prior to the release or their final land use in accordance with 19.15.29.13 NMAC including notification to the OCD when reclamation and re-vegetation are complete.

I hereby agree and sign off to the above statement	Name: Dale Woodall Title: EHS Professional Email: Dale.Woodall@dmn.com Date: 05/05/2024
--	--



**District I**  
1625 N. French Dr., Hobbs, NM 88240  
Phone:(575) 393-6161 Fax:(575) 393-0720  
**District II**  
811 S. First St., Artesia, NM 88210  
Phone:(575) 748-1283 Fax:(575) 748-9720  
**District III**  
1000 Rio Brazos Rd., Aztec, NM 87410  
Phone:(505) 334-6178 Fax:(505) 334-6170  
**District IV**  
1220 S. St Francis Dr., Santa Fe, NM 87505  
Phone:(505) 476-3470 Fax:(505) 476-3462

**State of New Mexico**  
**Energy, Minerals and Natural Resources**  
**Oil Conservation Division**  
**1220 S. St Francis Dr.**  
**Santa Fe, NM 87505**

CONDITIONS  
  
Action 340868

CONDITIONS

Operator: DEVON ENERGY PRODUCTION COMPANY, LP 333 West Sheridan Ave. Oklahoma City, OK 73102	OGRID: 6137
	Action Number: 340868
	Action Type: [C-141] Remediation Closure Request C-141 (C-141-v-Closure)

CONDITIONS

Created By	Condition	Condition Date
amaxwell	None	5/6/2024