



## SITE INFORMATION

---

**Closure Report**  
**Culebra Bluff Section 23 CTB (03.07.2024)**  
**Incident #: NAPP2407137317**  
**Eddy County, New Mexico**  
**Unit I Sec 23 T23S R28E**  
**32.28734°, -104.054515°**

**Crude Oil and Produced Water Release**  
**Point of Release: Valve malfunctioned when a vac truck incorrectly pushed fluid into separator instead of pulling fluid out of separator, causing a fluid release.**  
**Release Date: 03.07.2024**  
**Volume Released: 2 Barrels of Crude Oil & 13 Barrels of Produced Water**  
**Volume Recovered: 2 Barrel of Crude Oil & 10 Barrels of Produced Water**

CARMONA RESOURCES



**Prepared for:**  
**Chevron U.S.A., Inc.**  
**6301 Deauville Blvd**  
**Midland, Texas 79706**

**Prepared by:**  
**Carmona Resources, LLC**  
**310 West Wall Street**  
**Suite 500**  
**Midland, Texas 79701**



## TABLE OF CONTENTS

---

### 1.0 SITE INFORMATION AND BACKGROUND

### 2.0 SITE CHARACTERIZATION AND GROUNDWATER

### 3.0 NMAC REGULATORY CRITERIA

### 4.0 SITE ASSESSMENT ACTIVITIES

### 5.0 REMEDIATION ACTIVITIES

### 6.0 CONCLUSIONS

### FIGURES

FIGURE 1      OVERVIEW      FIGURE 2      TOPOGRAPHIC

FIGURE 3      SAMPLE LOCATION      FIGURE 4A/4B      EXCAVATION

### APPENDICES

APPENDIX A      TABLES

APPENDIX B      PHOTOS

APPENDIX C      NMOCD CORRESPONDENCE

APPENDIX D      SITE CHARACTERIZATION AND GROUNDWATER

APPENDIX E      LABORATORY REPORTS

April 11, 2024

Mike Bratcher  
District Supervisor  
Oil Conservation Division, District 2  
811 S. First Street  
Artesia, New Mexico 88210

**Re: Closure Report  
Culebra Bluff Section 23 CTB (03.07.2024)  
Chevron U.S.A., Inc.  
Site Location: Unit I, S23, T23S, R28E  
(Lat 32.28734°, Long -104.054515°)  
Eddy County, New Mexico**

Mr. Bratcher:

On behalf of Chevron U.S.A., Inc. (Chevron), Carmona Resources, LLC has prepared this letter to document site assessment and remediation activities for the Culebra Bluff Section 23 CTB release. The site is located at 32.28734°, -104.054515° within Unit I, S23, T23S, R28E, in Eddy County, New Mexico (Figures 1 and 2).

### **1.0 Site Information and Background**

Based on the initial C-141 obtained from the New Mexico Oil Conservation Division (NMOCD), the release was discovered on March 7, 2024, caused by valve failure on the separator due to a vac truck incorrectly pushing fluid into separator instead of pulling fluid out of separator. It resulted in approximately two (2) barrels of crude oil and thirteen (13) barrels of produced water. Two (2) barrels of crude oil and ten (10) barrels of produced water were recovered. The fluid was contained to the production well pad, shown in Figure 3. The initial C-141 form is attached in Appendix C.

### **2.0 Site Characterization and Groundwater**

The site is located within a medium karst area. Based on a review of the New Mexico Office of State Engineers and USGS databases, no known water sources are within a 0.50-mile radius of the location. A temporary monitoring well was found to be approximately 0.42 miles Southwest of the site in S23, T23S, R28E and was drilled in 2022. The temporary monitoring well has a reported depth to groundwater of 54' feet below the ground surface (ft bgs). A copy of the associated well log is attached in Appendix D. Additional information on this temporary monitoring well can be found on page 10 of the "2022 Soil & Groundwater Assessment Report" related to Incident #: NAB1821142197. Additionally, this release occurred >300 feet (450 feet) from any irrigation canal, which after research, does not directly drain into any waterway. The Pecos River is located >0.85 miles northwest of this site. See Appendix D for Site Characterization and Groundwater information.

### **3.0 NMAC Regulatory Criteria**

Per the NMOCD regulatory criteria established in 19.15.29.12 NMAC, the following criteria were utilized in assessing the site.

- Benzene: 10 milligrams per kilogram (mg/kg).
- Benzene, toluene, ethylbenzene, and total xylenes (BTEX): 50 mg/kg.
- TPH: 2,500 mg/kg (GRO + DRO + MRO).

- TPH: 1,000 mg/kg (GRO + DRO).
- Chloride: 10,000 mg/kg.

#### **4.0 Site Assessment Activities**

##### **Initial Assessment**

Between March 22, 2024 and March 26, 2024, Carmona Resources, LLC performed site assessment activities to evaluate soil impacts stemming from the release. A total of three (3) test trenches (T-1 through T-3), and six (6) horizontal sample points (H-1 through H-6) were installed to total depths ranging from surface to 5.0' bgs inside and surrounding the release area. See Figure 3 for the sample locations. For chemical analysis, the soil samples were collected and placed directly into laboratory-provided sample containers, stored on ice, and transported under the proper chain-of-custody protocol to Cardinal Laboratories in Hobbs, New Mexico. The samples were analyzed for total petroleum hydrocarbons (TPH) by EPA method 8015, modified benzene, toluene, ethylbenzene, and xylenes (BTEX) by EPA Method 8021B, and Chloride by EPA method 4500. The laboratory reports, including analytical methods, results, and chain-of-custody documents, are attached in Appendix E.

##### **Vertical Delineation**

Vertical delineation was achieved in all areas for Benzene, total BTEX, TPH, and Chloride concentrations. Refer to Table 1.

##### **Horizontal Delineation**

The areas of H-1 through H-6 were below the regulatory limits for Benzene, total BTEX, TPH, and Chloride concentrations. Refer to Table 1.

#### **5.0 Remediation Activities**

Carmona Resources personnel were onsite to supervise the remediation activities, collect confirmation samples, and document backfill activities. Before collecting composite confirmation samples, the NMOCD division office was notified via NMOCD portal on April 8, 2024, per Subsection D of 19.15.29.12 NMAC. See Appendix C. The area of T-1 was excavated to a depth of 1.5' bgs. A total of four (4) confirmation floor samples were collected (CS-1 through CS-4), and nine (9) sidewall samples (SW-1 through SW-9) were collected every 200 square feet to ensure the proper removal of the contaminated soils. All collected samples were analyzed for TPH analysis by EPA method 8015 modified, BTEX by EPA Method 8021B, and Chloride by EPA method 4500. Copies of laboratory analysis and chain-of-custody documentation are included in Appendix E. The excavation depths and confirmation sample locations are shown in Figure 4A and 4B.

All final confirmation samples were below the regulatory requirements for Benzene, total BTEX, TPH, and Chloride concentrations. Refer to Table 2.

Once the remediation activities were completed, the excavated areas were backfilled with clean material to surface grade. Approximately 370 square feet of contamination was remediated, resulting in 22 cubic yards of material excavated and transported offsite for proper disposal.





## **6.0 Conclusions**

Based on the assessment results and the analytical data, no further actions are required at the site. Chevron formally requests the closure of the spill. If you have any questions regarding this report or need additional information, please contact us at 432-813-1992.

Sincerely,

**Carmona Resources, LLC**

Ashton Thielke  
Sr. Project Manager

Clinton Merritt  
Sr. Project Manager

## FIGURES

CARMONA RESOURCES



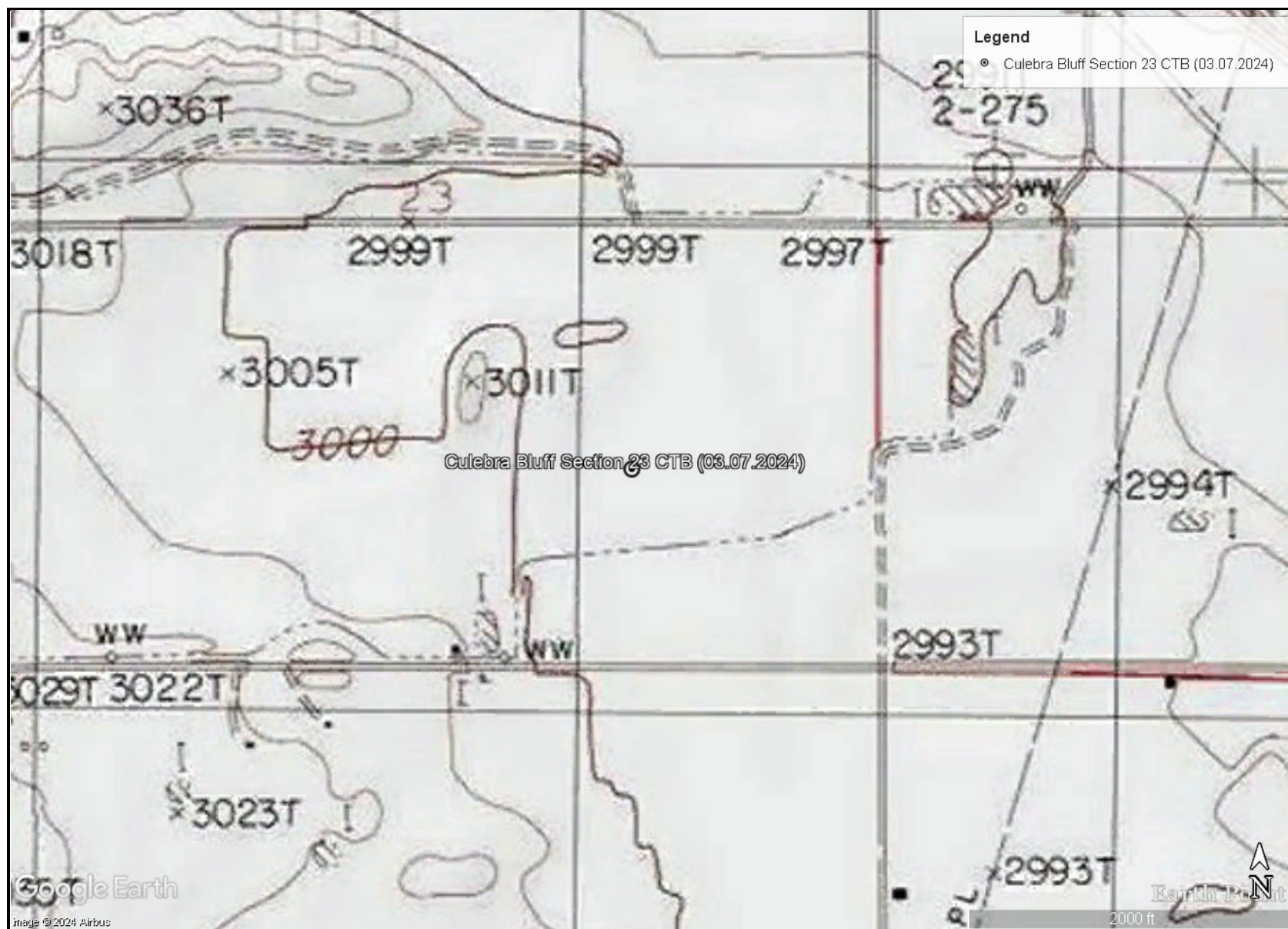


OVERVIEW MAP  
CHEVRON U.S.A., INC.  
CULEBRA BLUFF SECTION 23 CTB (03.07.2024)  
EDDY COUNTY, NEW MEXICO  
32.28734°, 104.054515°



FIGURE 1

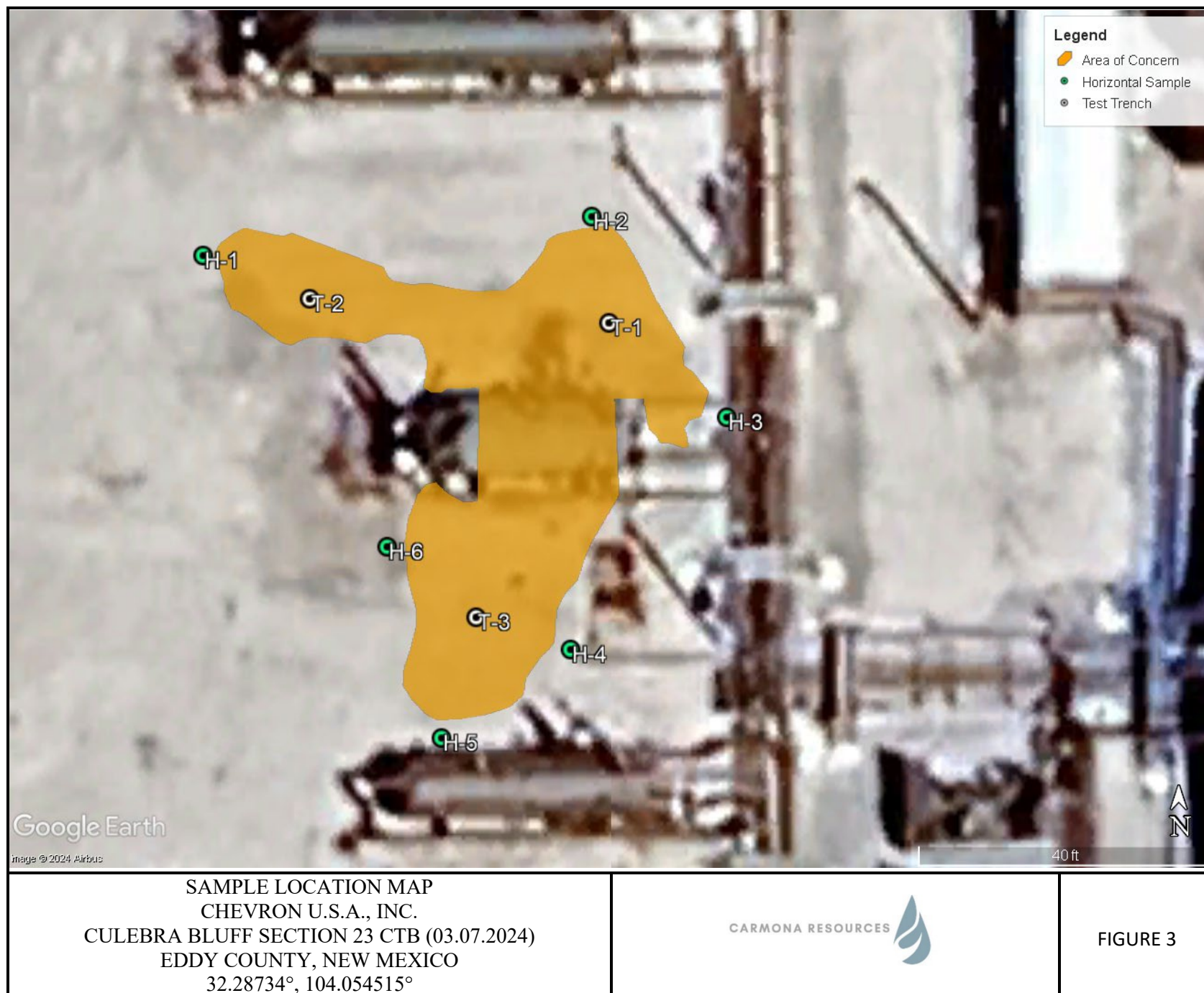




TOPOGRAPHIC MAP  
 CHEVRON U.S.A., INC.  
 CULEBRA BLUFF SECTION 23 CTB (03.07.2024)  
 EDDY COUNTY, NEW MEXICO  
 32.28734°, 104.054515°



FIGURE 2









## APPENDIX A

CARMONA RESOURCES





**Table 1**  
**Chevron**  
**Culebra Bluff Section 25 CTB**  
**Eddy County, New Mexico**

Sample ID	Date	Depth (ft)	TPH (mg/kg)				Benzene (mg/kg)	Toluene (mg/kg)	Ethylbenzene (mg/kg)	Xylene (mg/kg)	Total BTEX (mg/kg)	Chloride (mg/kg)
			GRO	DRO	MRO	Total						
<b>T-1</b>	3/26/2024	0-1.0'	154	1,270	225	1,649	<0.050	0.352	0.32	4.76	5.43	176
	"	2'	<10.0	26.2	<10.0	26.2	<0.050	<0.050	<0.050	<0.150	<0.300	112
	"	3'	<10.0	<10.0	<10.0	<10.0	<0.050	<0.050	<0.050	<0.150	<0.300	48.0
	"	4'	<10.0	<10.0	<10.0	<10.0	<0.050	<0.050	<0.050	<0.150	<0.300	336
<b>T-2</b>	3/26/2024	0-1.0'	<10.0	60.9	<10.0	60.9	<0.050	<0.050	<0.050	<0.150	<0.300	400
	"	2'	<10.0	<10.0	<10.0	<10.0	<0.050	<0.050	<0.050	<0.150	<0.300	64.0
	"	3'	<10.0	<10.0	<10.0	<10.0	<0.050	<0.050	<0.050	<0.150	<0.300	480
	"	4'	<10.0	<10.0	<10.0	<10.0	<0.050	<0.050	<0.050	<0.150	<0.300	848
	"	5'	<10.0	<10.0	<10.0	<10.0	<0.050	<0.050	<0.050	<0.150	<0.300	976
<b>T-3</b>	3/26/2024	0-1.0'	<10.0	110	22.2	132	<0.050	<0.050	<0.050	<0.150	<0.300	240
	"	2'	<10.0	<10.0	<10.0	<10.0	<0.050	<0.050	<0.050	<0.150	<0.300	32.0
	"	3'	<10.0	<10.0	<10.0	<10.0	<0.050	<0.050	<0.050	<0.150	<0.300	64.0
	"	4'	<10.0	14.2	<10.0	14.2	<0.050	<0.050	<0.050	<0.150	<0.300	368
<b>Regulatory Criteria<sup>A</sup></b>			<b>1,000 mg/kg</b>			<b>2,500 mg/kg</b>	<b>10 mg/kg</b>				<b>50 mg/kg</b>	<b>10,000 mg/kg</b>

(-) Not Analyzed

<sup>A</sup> – Table 1 - 19.15.29 NMAC

mg/kg - milligram per kilogram

TPH - Total Petroleum Hydrocarbons

ft - feet

(T) Test Trench

Removed

**Table 1**  
**Chevron**  
**Culebra Bluff Section 25 CTB**  
**Eddy County, New Mexico**

Sample ID	Date	Depth (ft)	TPH (mg/kg)				Benzene (mg/kg)	Toluene (mg/kg)	Ethylbenzene (mg/kg)	Xylene (mg/kg)	Total BTEX (mg/kg)	Chloride (mg/kg)
			GRO	DRO	MRO	Total						
H-1	3/22/2024	0-0.5	<10.0	<10.0	<10.0	<10.0	<0.050	<0.050	<0.050	<0.150	<0.300	416
H-2	3/22/2024	0-0.5	<10.0	<10.0	<10.0	<10.0	<0.050	<0.050	<0.050	<0.150	<0.300	128
H-3	3/22/2024	0-0.5	<10.0	<10.0	<10.0	<10.0	<0.050	<0.050	<0.050	<0.150	<0.300	416
H-4	3/22/2024	0-0.5	<10.0	<10.0	<10.0	<10.0	<0.050	<0.050	<0.050	<0.150	<0.300	416
H-5	3/22/2024	0-0.5	<10.0	<10.0	<10.0	<10.0	<0.050	<0.050	<0.050	<0.150	<0.300	368
H-6	3/22/2024	0-0.5	<10.0	<10.0	<10.0	<10.0	<0.050	<0.050	<0.050	<0.150	<0.300	192
Regulatory Criteria <sup>A</sup>			1,000 mg/kg			2,500 mg/kg	10 mg/kg				50 mg/kg	10,000 mg/kg

(-) Not Analyzed

<sup>A</sup> – Table 1 - 19.15.29 NMAC

mg/kg - milligram per kilogram

TPH - Total Petroleum Hydrocarbons

ft - feet

(H) Horizontal Sample

**Table 2**  
**Chevron**  
**Culebra Bluff Section 25 CTB**  
**Eddy County, New Mexico**

Sample ID	Date	Depth (ft)	TPH (mg/kg)				Benzene (mg/kg)	Toluene (mg/kg)	Ethylbenzene (mg/kg)	Xylene (mg/kg)	Total BTEX (mg/kg)	Chloride (mg/kg)
			GRO	DRO	MRO	Total						
<b>CS-1</b>	4/10/2024	1.5	<10.0	<10.0	<10.0	<10.0	<0.050	<0.050	<0.050	<0.150	<0.300	208
<b>CS-2</b>	4/10/2024	1.5	<10.0	<10.0	<10.0	<10.0	<0.050	<0.050	<0.050	<0.150	<0.300	176
<b>CS-3</b>	4/10/2024	1.5	<10.0	<10.0	<10.0	<10.0	<0.050	<0.050	<0.050	<0.150	<0.300	128
<b>CS-4</b>	4/10/2024	1.5	<10.0	<10.0	<10.0	<10.0	<0.050	<0.050	<0.050	<0.150	<0.300	240
<b>SW-1</b>	4/10/2024	1.5	<10.0	<10.0	<10.0	<10.0	<0.050	<0.050	<0.050	<0.150	<0.300	128
<b>SW-2</b>	4/10/2024	1.5	<10.0	<10.0	<10.0	<10.0	<0.050	<0.050	<0.050	<0.150	<0.300	144
<b>SW-3</b>	4/10/2024	1.5	<10.0	36.0	<10.0	36.0	<0.050	<0.050	<0.050	<0.150	<0.300	224
<b>SW-4</b>	4/10/2024	1.5	<10.0	<10.0	<10.0	<10.0	<0.050	<0.050	<0.050	<0.150	<0.300	256
<b>SW-5</b>	4/10/2024	1.5	<10.0	58.7	<10.0	58.7	<0.050	<0.050	<0.050	<0.150	<0.300	288
<b>SW-6</b>	4/10/2024	1.5	<10.0	<10.0	<10.0	<10.0	<0.050	<0.050	<0.050	<0.150	<0.300	128
<b>SW-7</b>	4/10/2024	1.5	<10.0	<10.0	<10.0	<10.0	<0.050	<0.050	<0.050	<0.150	<0.300	192
<b>SW-8</b>	4/10/2024	1.5	<10.0	12.7	<10.0	12.7	<0.050	<0.050	<0.050	<0.150	<0.300	320
<b>SW-9</b>	4/11/2024	1.5	<10.0	10.1	<10.0	10.1	<0.050	<0.050	<0.050	<0.150	<0.300	560
<b>Regulatory Criteria<sup>A</sup></b>			<b>1,000 mg/kg</b>			<b>2,500 mg/kg</b>	<b>10 mg/kg</b>				<b>50 mg/kg</b>	<b>10,000 mg/kg</b>

(-) Not Analyzed

<sup>A</sup> – Table 1 - 19.15.29 NMAC

mg/kg - milligram per kilogram

TPH - Total Petroleum Hydrocarbons

ft - feet

(CS) Confirmation Floor Sample

(SW) Confirmation Sidewall Sample

## APPENDIX B

CARMONA RESOURCES



## PHOTOGRAPHIC LOG

Chevron U.S.A., Inc.

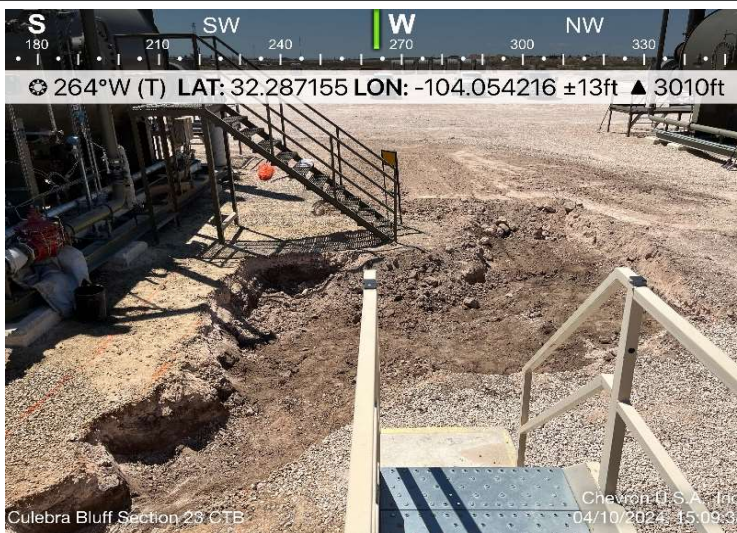
## Photograph No. 1

**Facility:** CULEBRA BLUFF SECTION 23  
CTB (03.07.2024)

**County:** Eddy County, New Mexico

**Description:**

View West, Area of CS-1 though CS-3.



## Photograph No. 2

**Facility:** CULEBRA BLUFF SECTION 23  
CTB (03.07.2024)

**County:** Eddy County, New Mexico

**Description:**

View West, Area of CS-1 though CS-3.



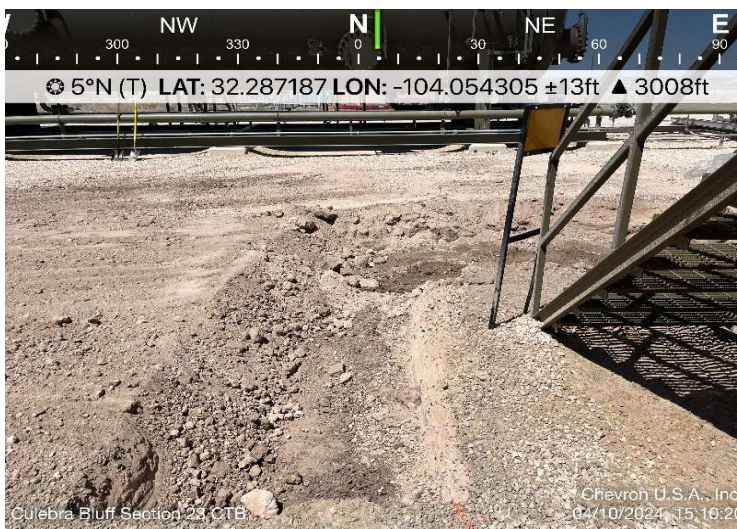
## Photograph No. 3

**Facility:** CULEBRA BLUFF SECTION 23  
CTB (03.07.2024)

**County:** Eddy County, New Mexico

**Description:**

View North, Area of CS-3 and CS-4.





# PHOTOGRAPHIC LOG

Chevron U.S.A., Inc.

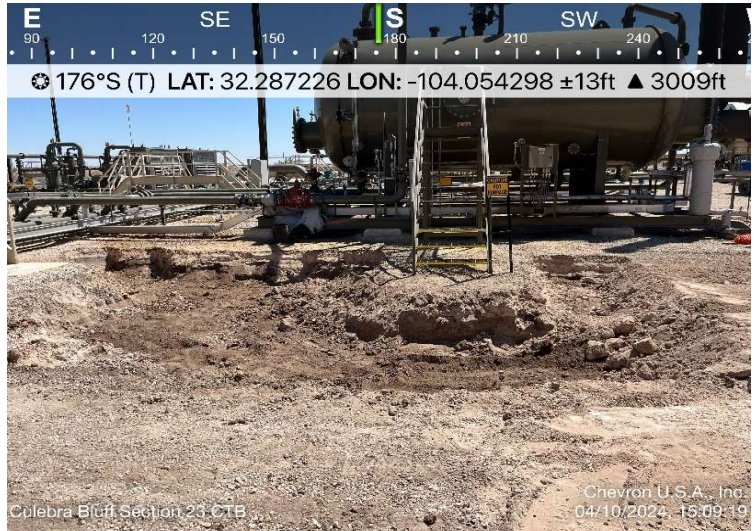
## Photograph No. 4

**Facility:** CULEBRA BLUFF SECTION 23  
CTB (03.07.2024)

**County:** Eddy County, New Mexico

**Description:**

View South, Area of CS-1 through CS-4.



## Photograph No. 5

**Facility:** CULEBRA BLUFF SECTION 23  
CTB (03.07.2024)

**County:** Eddy County, New Mexico

**Description:**

View Southeast, Area of CS-1 through CS-4.



## APPENDIX C

CARMONA RESOURCES



**District I**  
1625 N. French Dr., Hobbs, NM 88240  
Phone:(575) 393-6161 Fax:(575) 393-0720  
**District II**  
811 S. First St., Artesia, NM 88210  
Phone:(575) 748-1283 Fax:(575) 748-9720  
**District III**  
1000 Rio Brazos Rd., Aztec, NM 87410  
Phone:(505) 334-6178 Fax:(505) 334-6170  
**District IV**  
1220 S. St Francis Dr., Santa Fe, NM 87505  
Phone:(505) 476-3470 Fax:(505) 476-3462

**State of New Mexico**  
**Energy, Minerals and Natural Resources**  
**Oil Conservation Division**  
**1220 S. St Francis Dr.**  
**Santa Fe, NM 87505**

QUESTIONS

Action 321479

QUESTIONS

Operator: CHEVRON U S A INC 6301 Deauville Blvd Midland, TX 79706	OGRID: 4323
	Action Number: 321479
	Action Type: [NOTIFY] Notification Of Release (NOR)

QUESTIONS

<b>Location of Release Source</b> <i>Please answer all the questions in this group.</i>	
Site Name	Culebra Bluff Section 23 CTB
Date Release Discovered	03/07/2024
Surface Owner	Private

<b>Incident Details</b> <i>Please answer all the questions in this group.</i>	
Incident Type	Produced Water Release
Did this release result in a fire or is the result of a fire	No
Did this release result in any injuries	No
Has this release reached or does it have a reasonable probability of reaching a watercourse	No
Has this release endangered or does it have a reasonable probability of endangering public health	No
Has this release substantially damaged or will it substantially damage property or the environment	No
Is this release of a volume that is or may with reasonable probability be detrimental to fresh water	No

<b>Nature and Volume of Release</b> <i>Material(s) released, please answer all that apply below. Any calculations or specific justifications for the volumes provided should be attached to the follow-up C-141 submission.</i>	
Crude Oil Released (bbls) Details	Cause: Liquids Unloading   Truck   Crude Oil   Released: 2 BBL   Recovered: 2 BBL   Lost: 0 BBL.
Produced Water Released (bbls) Details	Cause: Liquids Unloading   Truck   Produced Water   Released: 13 BBL   Recovered: 10 BBL   Lost: 3 BBL.
Is the concentration of chloride in the produced water >10,000 mg/l	Yes
Condensate Released (bbls) Details	Not answered.
Natural Gas Vented (Mcf) Details	Not answered.
Natural Gas Flared (Mcf) Details	Not answered.
Other Released Details	Not answered.
Are there additional details for the questions above (i.e. any answer containing Other, Specify, Unknown, and/or Fire, or any negative lost amounts)	Not answered.



**District I**  
1625 N. French Dr., Hobbs, NM 88240  
Phone:(575) 393-6161 Fax:(575) 393-0720  
**District II**  
811 S. First St., Artesia, NM 88210  
Phone:(575) 748-1283 Fax:(575) 748-9720  
**District III**  
1000 Rio Brazos Rd., Aztec, NM 87410  
Phone:(505) 334-6178 Fax:(505) 334-6170  
**District IV**  
1220 S. St Francis Dr., Santa Fe, NM 87505  
Phone:(505) 476-3470 Fax:(505) 476-3462

State of New Mexico  
Energy, Minerals and Natural Resources  
Oil Conservation Division  
1220 S. St Francis Dr.  
Santa Fe, NM 87505

QUESTIONS, Page 2  
  
Action 321479

QUESTIONS (continued)

Operator:  CHEVRON U S A INC 6301 Deauville Blvd Midland, TX 79706	OGRID:  4323
	Action Number:  321479
	Action Type: [NOTIFY] Notification Of Release (NOR)

QUESTIONS

Nature and Volume of Release (continued)	
Is this a gas only submission (i.e. only significant Mcf values reported)	No, according to supplied volumes this does not appear to be a "gas only" report.
Was this a major release as defined by Subsection A of 19.15.29.7 NMAC	No
Reasons why this would be considered a submission for a notification of a major release	Unavailable.
With the implementation of the 19.15.27 NMAC (05/25/2021), venting and/or flaring of natural gas (i.e. gas only) are to be submitted on the C-129 form.	

Initial Response	
The responsible party must undertake the following actions immediately unless they could create a safety hazard that would result in injury.	
The source of the release has been stopped	True
The impacted area has been secured to protect human health and the environment	True
Released materials have been contained via the use of berms or dikes, absorbent pads, or other containment devices	True
All free liquids and recoverable materials have been removed and managed appropriately	True
If all the actions described above have not been undertaken, explain why	Not answered.
Per Paragraph 4 of Subsection B of 19.15.29.8 NMAC the responsible party may commence remediation immediately after discovery of a release. If remediation has begun, please prepare and attach a narrative of actions to date in the follow-up C-141 submission. If remedial efforts have been successfully completed or if the release occurred within a lined containment area (see 19.15.29.11(A)(5)(a) NMAC), please prepare and attach all information needed for closure evaluation in the follow-up C-141 submission.	

**District I**  
1625 N. French Dr., Hobbs, NM 88240  
Phone:(575) 393-6161 Fax:(575) 393-0720  
**District II**  
811 S. First St., Artesia, NM 88210  
Phone:(575) 748-1283 Fax:(575) 748-9720  
**District III**  
1000 Rio Brazos Rd., Aztec, NM 87410  
Phone:(505) 334-6178 Fax:(505) 334-6170  
**District IV**  
1220 S. St Francis Dr., Santa Fe, NM 87505  
Phone:(505) 476-3470 Fax:(505) 476-3462

**State of New Mexico**  
**Energy, Minerals and Natural Resources**  
**Oil Conservation Division**  
**1220 S. St Francis Dr.**  
**Santa Fe, NM 87505**

ACKNOWLEDGMENTS  
  
Action 321479

ACKNOWLEDGMENTS

Operator: CHEVRON U S A INC 6301 Deauville Blvd Midland, TX 79706	OGRID: 4323
	Action Number: 321479
	Action Type: [NOTIFY] Notification Of Release (NOR)

ACKNOWLEDGMENTS

<input checked="" type="checkbox"/>	I acknowledge that I am authorized to submit notification of a release on behalf of my operator.
<input checked="" type="checkbox"/>	I acknowledge that upon submitting this application, I will be creating a new incident file (assigned to my operator) to track the notification(s) and corrective action(s) for a release, pursuant to NMAC 19.15.29.
<input checked="" type="checkbox"/>	I acknowledge that creating a new incident file will require my operator to file subsequent submission(s) of form "C-141, Application for administrative approval of a release notification and corrective action", pursuant to NMAC 19.15.29.
<input checked="" type="checkbox"/>	I hereby certify that the information given above is true and complete to the best of my knowledge and understand that pursuant to OCD rules and regulations all operators are required to report and/or file certain release notifications and perform corrective actions for releases which may endanger public health or the environment.
<input checked="" type="checkbox"/>	I acknowledge the fact that the acceptance of a C-141 report by the OCD does not relieve the operator of liability should their operations have failed to adequately investigate and remediate contamination that pose a threat to groundwater, surface water, human health or the environment.
<input checked="" type="checkbox"/>	I acknowledge the fact that, in addition, OCD acceptance of a C-141 report does not relieve the operator of responsibility for compliance with any other federal, state, or local laws and/or regulations.

**District I**  
1625 N. French Dr., Hobbs, NM 88240  
Phone:(575) 393-6161 Fax:(575) 393-0720  
**District II**  
811 S. First St., Artesia, NM 88210  
Phone:(575) 748-1283 Fax:(575) 748-9720  
**District III**  
1000 Rio Brazos Rd., Aztec, NM 87410  
Phone:(505) 334-6178 Fax:(505) 334-6170  
**District IV**  
1220 S. St Francis Dr., Santa Fe, NM 87505  
Phone:(505) 476-3470 Fax:(505) 476-3462

**State of New Mexico**  
**Energy, Minerals and Natural Resources**  
**Oil Conservation Division**  
**1220 S. St Francis Dr.**  
**Santa Fe, NM 87505**

CONDITIONS  
  
Action 321479

CONDITIONS

Operator: CHEVRON U S A INC 6301 Deauville Blvd Midland, TX 79706	OGRID: 4323
	Action Number: 321479
	Action Type: [NOTIFY] Notification Of Release (NOR)

CONDITIONS

Created By	Condition	Condition Date
klincoln	When submitting future reports regarding this release, please submit the calculations used or specific justification for the volumes reported on the initial C-141.	3/11/2024

Calculation Details									
Area	Shape	Secondary Containment	Standing Liquid Dimension	Standing Liquid Volume	Water Cut	Oil Volume	Penetration Depth	Water to Soil Volume	Water Volume
1	Rectangle	Caliche	20 ft x 10 ft x 1 in	3.024 bbl	85%	0.454 bbl	.125 in	0.056 bbl	2.57 bbl
2	Rectangle	Caliche	10 ft x 12 ft x 2 in	3.629 bbl	85%	0.544 bbl	.25 in	0.067 bbl	3.085 bbl
3	Rectangle	Caliche	6 ft x 4 ft x in	0.007 bbl	85%	0.001 bbl	.128 in	0.007 bbl	0.006 bbl
4	Rectangle		20 ft x 10 ft x 3 in	9.016 bbl	85%	1.352 bbl	.25 in	0.111 bbl	7.664 bbl
5					%				
6					%				
7					%				
Rec Vol						2.351			13.32
Total Vol						2.351			13.325

**District I**  
1625 N. French Dr., Hobbs, NM 88240  
Phone:(575) 393-6161 Fax:(575) 393-0720  
**District II**  
811 S. First St., Artesia, NM 88210  
Phone:(575) 748-1283 Fax:(575) 748-9720  
**District III**  
1000 Rio Brazos Rd., Aztec, NM 87410  
Phone:(505) 334-6178 Fax:(505) 334-6170  
**District IV**  
1220 S. St Francis Dr., Santa Fe, NM 87505  
Phone:(505) 476-3470 Fax:(505) 476-3462

State of New Mexico  
Energy, Minerals and Natural Resources  
Oil Conservation Division  
1220 S. St Francis Dr.  
Santa Fe, NM 87505

QUESTIONS

Action 331082

QUESTIONS

Operator: CHEVRON U S A INC 6301 Deauville Blvd Midland, TX 79706	OGRID: 4323
	Action Number: 331082
	Action Type: [NOTIFY] Notification Of Sampling (C-141N)

QUESTIONS

Prerequisites	
Incident ID (n#)	nAPP2407137317
Incident Name	NAPP2407137317 CULEBRA BLUFF SECTION 23 CTB @ 0
Incident Type	Produced Water Release
Incident Status	Initial C-141 Approved
Incident Facility	[fAPP2127833704] Culebra Bluff Section 23 CTB

Location of Release Source	
Site Name	Culebra Bluff Section 23 CTB
Date Release Discovered	03/07/2024
Surface Owner	Private

Sampling Event General Information	
Please answer all the questions in this group.	
What is the sampling surface area in square feet	452
What is the estimated number of samples that will be gathered	7
Sampling date pursuant to Subparagraph (a) of Paragraph (1) of Subsection D of 19.15.29.12 NMAC	04/10/2024
Time sampling will commence	01:00 PM
Please provide any information necessary for observers to contact samplers	Gilbert Priego – 432-813-7389
Please provide any information necessary for navigation to sampling site	32.28734,-104.054515

**District I**  
1625 N. French Dr., Hobbs, NM 88240  
Phone:(575) 393-6161 Fax:(575) 393-0720  
**District II**  
811 S. First St., Artesia, NM 88210  
Phone:(575) 748-1283 Fax:(575) 748-9720  
**District III**  
1000 Rio Brazos Rd., Aztec, NM 87410  
Phone:(505) 334-6178 Fax:(505) 334-6170  
**District IV**  
1220 S. St Francis Dr., Santa Fe, NM 87505  
Phone:(505) 476-3470 Fax:(505) 476-3462

State of New Mexico  
Energy, Minerals and Natural Resources  
Oil Conservation Division  
1220 S. St Francis Dr.  
Santa Fe, NM 87505

CONDITIONS  
  
Action 331082

CONDITIONS

Operator: CHEVRON U S A INC 6301 Deauville Blvd Midland, TX 79706	OGRID: 4323
	Action Number: 331082
	Action Type: [NOTIFY] Notification Of Sampling (C-141N)

CONDITIONS

Created By	Condition	Condition Date
abarnhill	Failure to notify the OCD of sampling events including any changes in date/time per the requirements of 19.15.29.12.D.(1).(a) NMAC, may result in the remediation closure samples not being accepted.	4/8/2024

## APPENDIX D

CARMONA RESOURCES





**Nearest water well**

Chevron U.S.A., Inc.

**Legend**

- 0.42 Miles
- 0.50 Mile Radius
- Culebra Bluff Section 23 CTB (03.07.2024)
- Groundwater Determination Bore

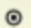





Medium Karst

Chevron U.S.A., Inc.

Legend

-  Culebra Bluff Section 23 CTB (03.07.2024)
-  Medium

Culebra Bluff Section 23 CTB (03.07.2024)






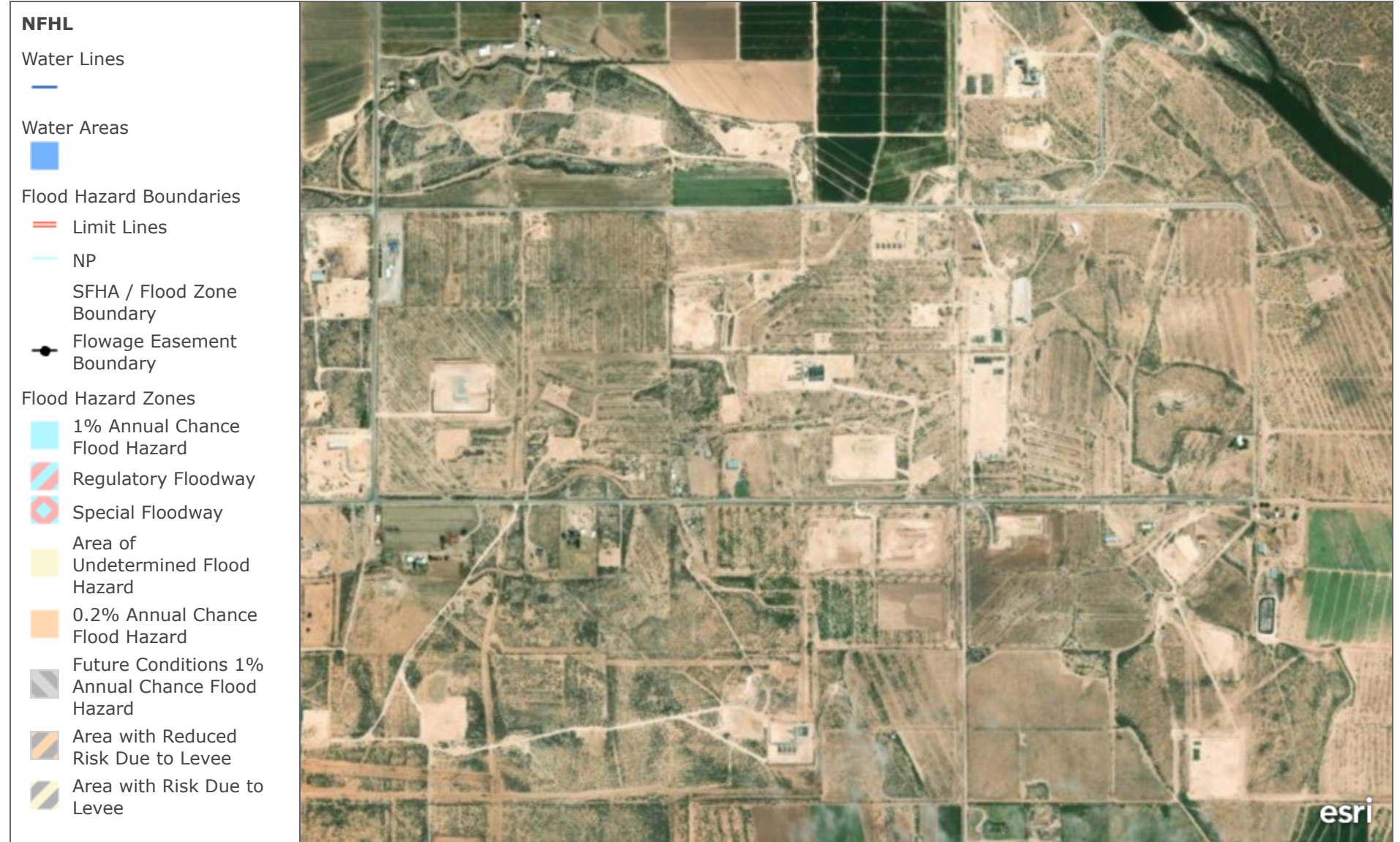
<b>Date Start/Finish:</b> 06-27-2022 <b>Drilling Company:</b> HCI <b>Driller's Name:</b> Kent <b>Drilling Method:</b> Air rotary <b>Sampling Method:</b> Discrete/ Grab <b>Rig Type:</b> Air rotary	<b>Latitude:</b> N/A <b>Longitude:</b> N/A <b>Casing Elevation:</b> Not Surveyed  <b>Borehole Depth:</b> 65' <b>Surface Elevation:</b> Not Surveyed  <b>Descriptions By:</b> Karen S.	<b>Well/Boring ID:</b> TMW-1  <b>Client:</b> Chevron Environmental Management Company <b>Location:</b> SCB 23-14 Loving, NM
--------------------------------------------------------------------------------------------------------------------------------------------------------------------------------------------------------------------	------------------------------------------------------------------------------------------------------------------------------------------------------------------------------------------------------------	--------------------------------------------------------------------------------------------------------------------------------------

DEPTH	Sample Run Number	Sample/Int/Type	Recovery (feet)	PID	USCS Code	Geologic Column	Stratigraphic Description	Well/Boring Construction
-------	-------------------	-----------------	-----------------	-----	-----------	-----------------	---------------------------	--------------------------

0	0-1'	0.5	SM				Silty sand 2.5 YR 6/3 light Reddish Brown, very fine, fine, well sorted, subrounded, loose, soft, trace gravels, trace caliche
5	4-5'	1	CL				Silty Clay 25 YR 4/4 Reddish Brown, non-pliable, non-plastic, hard dry with some silt, very fine, well rounded, well sorted, little gypsum; 2.5 YR 8/3 Pink, small to medium, subangular, crystals
10	10-11'	1	CL				Clay 2.5 YR 4/4 Reddish Brown, non-pliable, non-plastic, blocky, hard to firm, dry, trace, gypsum
15	15-16'	1					
20	20-21'	1	CL				Silty Clay 25 YR 4/4 Reddish Brown, non-pliable, non-plastic, blocky, firm, dry with some gypsum; 5 YR 8/3 Pink, small, angular, hard, crystals, trace sand
25	25-26'	1	CL				Clay 2.5 YR 4/4 Reddish Brown, non-pliable, non-plastic, blocky, hard to firm, dry, trace gypsum, trace silt
30	30-31'	1	SC				Sandy clay 5YR 5/8 Yellowish Red, non-pliable, non-plastic hard, blocky, dry with some sand, fine, well rounded, well sorted, trace gypsum
35	35-36'	1					Clay 7.5 YR 4/6 strong Brown, non-pliable, non-plastic, firm to hard, blocky, dry with some silt, very fine, well rounded, well sorted with some little gypsum; 5 YR 8/3 Pink, small to medium, angular, hard crystals, trace sand
40	40-41'	1					
45	45-46'	1	CL				
50	50-51'	1					
55	55-56'	1	SC				Sandy clay 7.5 YR strong Brown, non-pliable, non-plastic, hard, blocky, dry with some sand, fine, rounded, well sorted with some gypsum; 5YR 8/3 Pink, small to medium, angular, hard, crystals
60							No Recovery
65							End of boring @ 65' bgs

 Infrastructure · Water · Environment · Buildings	<b>Remarks:</b> 1. Below Ground Surface (bgs) 2. No Recovery @ 60-65'
-----------------------------------------------------------------------------------------------------------------------------------------	--------------------------------------------------------------------------

# FEMA National Flood Hazard Layer (NFHL)

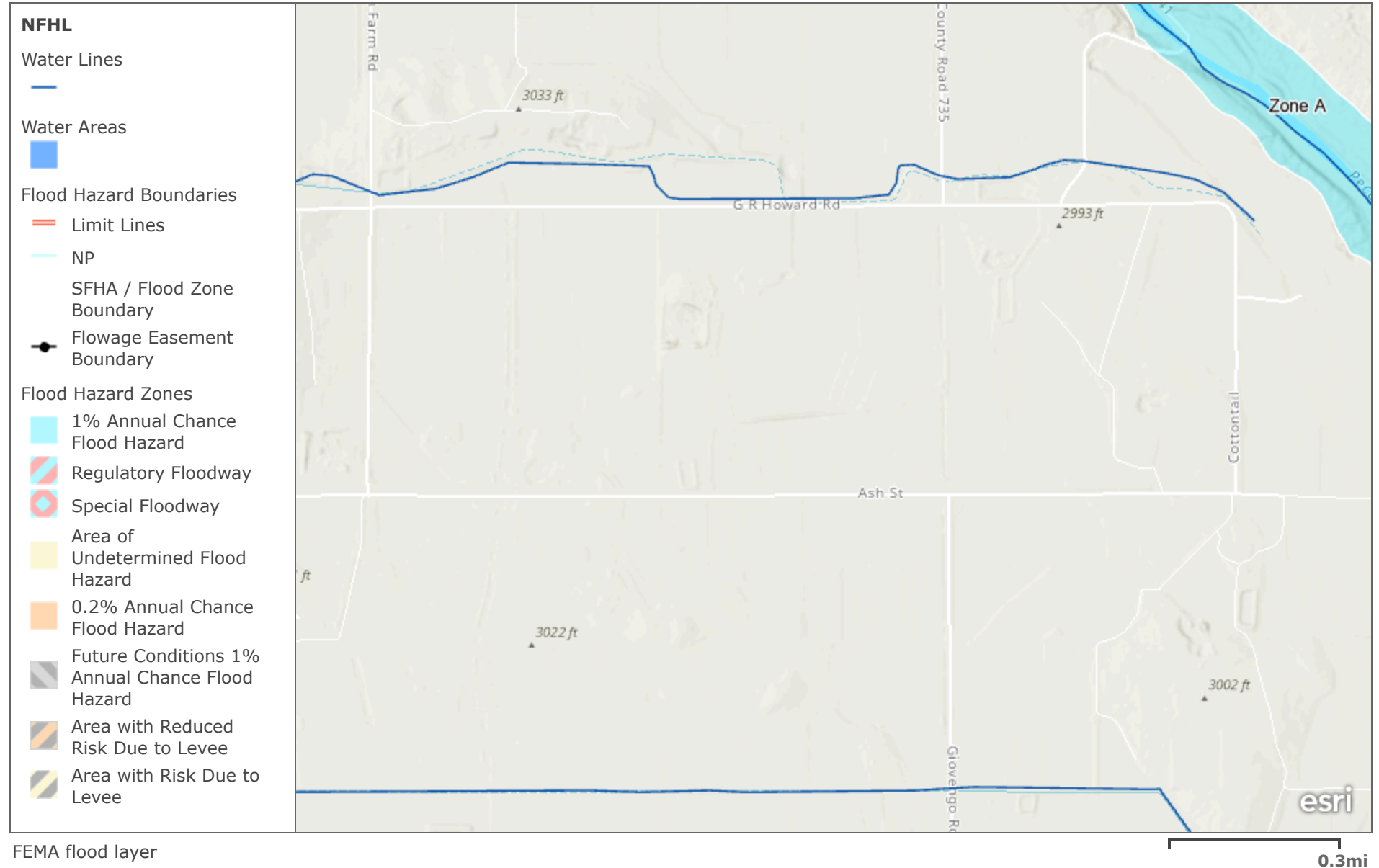


FEMA flood layer

0.3mi

Maxar

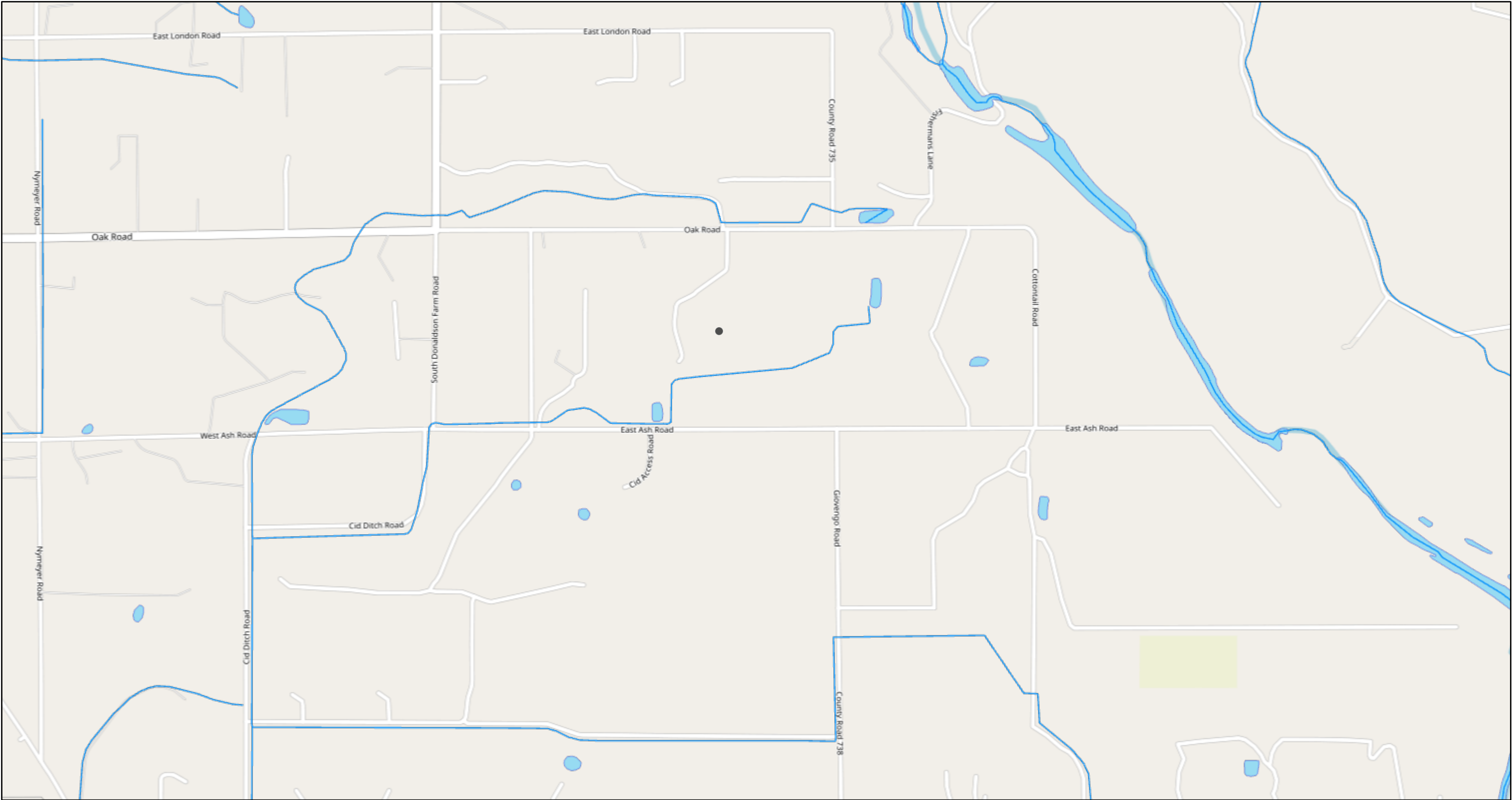
# FEMA National Flood Hazard Layer (NFHL)



Esri, NASA, NGA, USGS, FEMA | Esri Community Maps Contributors, New Mexico State University, Texas Parks & Wildlife, © OpenStreetMap, Microsoft, CONANP, Esri, TomTom, Garmin, SafeGraph, GeoTechnologies, Inc, METI/NASA, USGS, EPA, NPS, US Census Bureau, USDA, USFWS

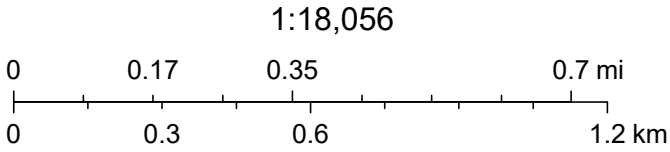


# Culebra Bluff Section 23 CTB (03.07.2024)



3/20/2024, 1:55:04 PM

- OSW Water Bodys
- OSE Streams



Map data © OpenStreetMap contributors, CC-BY-SA, NM OSE

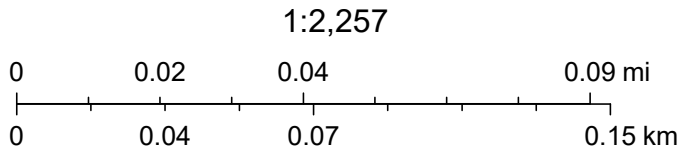


# Culebra Bluff Section 23 CTB (03.07.2024)



4/8/2024, 3:30:08 PM

— OSE Streams



Maxar, Microsoft, Esri, HERE, Garmin, IPC, NM OSE



## APPENDIX E

CARMONA RESOURCES





PHONE (575) 393-2326 ° 101 E. MARLAND ° HOBBS, NM 88240

---

March 28, 2024

ASHTON THIELKE

CARMONA RESOURCES

310 W WALL ST, SUITE 500

MIDLAND, TX 79701

RE: CULEBRA BLUFF SECTION 25 CTB

Enclosed are the results of analyses for samples received by the laboratory on 03/22/24 16:00.

Cardinal Laboratories is accredited through Texas NELAP under certificate number T104704398-23-16. Accreditation applies to drinking water, non-potable water and solid and chemical materials. All accredited analytes are denoted by an asterisk (\*). For a complete list of accredited analytes and matrices visit the TCEQ website at [www.tceq.texas.gov/field/qa/lab\\_accred\\_certif.html](http://www.tceq.texas.gov/field/qa/lab_accred_certif.html).

Cardinal Laboratories is accredited through the State of Colorado Department of Public Health and Environment for:

Method EPA 552.2	Haloacetic Acids (HAA-5)
Method EPA 524.2	Total Trihalomethanes (TTHM)
Method EPA 524.4	Regulated VOCs (V1, V2, V3)

Accreditation applies to public drinking water matrices.

This report meets NELAP requirements and is made up of a cover page, analytical results, and a copy of the original chain-of-custody. If you have any questions concerning this report, please feel free to contact me.

Sincerely,

A handwritten signature in black ink that reads "Celey D. Keene". The signature is written in a cursive style with a large, stylized 'C' and 'K'.

Celey D. Keene

Lab Director/Quality Manager





PHONE (575) 393-2326 ° 101 E. MARLAND ° HOBBS, NM 88240

**Analytical Results For:**

CARMONA RESOURCES  
 ASHTON THIELKE  
 310 W WALL ST, SUITE 500  
 MIDLAND TX, 79701  
 Fax To:

Received:	03/22/2024	Sampling Date:	03/22/2024
Reported:	03/28/2024	Sampling Type:	Soil
Project Name:	CULEBRA BLUFF SECTION 25 CTB	Sampling Condition:	Cool & Intact
Project Number:	2312	Sample Received By:	Tamara Oldaker
Project Location:	EDDY CO NM		

**Sample ID: H - 1 ( 0-0.5' ) (H241518-01)**

BTEx 8021B		mg/kg		Analyzed By: JH					
Analyte	Result	Reporting Limit	Analyzed	Method Blank	BS	% Recovery	True Value QC	RPD	Qualifier
Benzene*	<0.050	0.050	03/26/2024	ND	2.02	101	2.00	5.00	
Toluene*	<0.050	0.050	03/26/2024	ND	2.08	104	2.00	4.49	
Ethylbenzene*	<0.050	0.050	03/26/2024	ND	2.07	104	2.00	4.40	
Total Xylenes*	<0.150	0.150	03/26/2024	ND	6.19	103	6.00	3.95	
Total BTEX	<0.300	0.300	03/26/2024	ND					

Surrogate: 4-Bromofluorobenzene (PID) 111 % 71.5-134

Chloride, SM4500Cl-B		mg/kg		Analyzed By: CT						
Analyte	Result	Reporting Limit	Analyzed	Method Blank	BS	% Recovery	True Value QC	RPD	Qualifier	
Chloride	416	16.0	03/26/2024	ND	416	104	400	7.41		

TPH 8015M		mg/kg		Analyzed By: MS					
Analyte	Result	Reporting Limit	Analyzed	Method Blank	BS	% Recovery	True Value QC	RPD	Qualifier
GRO C6-C10*	<10.0	10.0	03/25/2024	ND	214	107	200	6.52	
DRO >C10-C28*	<10.0	10.0	03/25/2024	ND	200	100	200	8.31	
EXT DRO >C28-C36	<10.0	10.0	03/25/2024	ND					

Surrogate: 1-Chlorooctane 89.5 % 48.2-134

Surrogate: 1-Chlorooctadecane 88.5 % 49.1-148

Cardinal Laboratories

\*=Accredited Analyte

PLEASE NOTE: Liability and Damages. Cardinal's liability and client's exclusive remedy for any claim arising, whether based in contract or tort, shall be limited to the amount paid by client for analyses. All claims, including those for negligence and any other cause whatsoever shall be deemed waived unless made in writing and received by Cardinal within thirty (30) days after completion of the applicable service. In no event shall Cardinal be liable for incidental or consequential damages, including, without limitation, business interruptions, loss of use, or loss of profits incurred by client, its subsidiaries, affiliates or successors arising out of or related to the performance of the services hereunder by Cardinal, regardless of whether such claim is based upon any of the above stated reasons or otherwise. Results relate only to the samples identified above. This report shall not be reproduced except in full with written approval of Cardinal Laboratories.

Celey D. Keene, Lab Director/Quality Manager



PHONE (575) 393-2326 ° 101 E. MARLAND ° HOBBS, NM 88240

**Analytical Results For:**

CARMONA RESOURCES  
 ASHTON THIELKE  
 310 W WALL ST, SUITE 500  
 MIDLAND TX, 79701  
 Fax To:

Received: 03/22/2024  
 Reported: 03/28/2024  
 Project Name: CULEBRA BLUFF SECTION 25 CTB  
 Project Number: 2312  
 Project Location: EDDY CO NM

Sampling Date: 03/22/2024  
 Sampling Type: Soil  
 Sampling Condition: Cool & Intact  
 Sample Received By: Tamara Oldaker

**Sample ID: H - 2 ( 0-0.5' ) (H241518-02)**

BTEx 8021B		mg/kg		Analyzed By: JH					
Analyte	Result	Reporting Limit	Analyzed	Method Blank	BS	% Recovery	True Value QC	RPD	Qualifier
Benzene*	<0.050	0.050	03/26/2024	ND	2.02	101	2.00	5.00	
Toluene*	<0.050	0.050	03/26/2024	ND	2.08	104	2.00	4.49	
Ethylbenzene*	<0.050	0.050	03/26/2024	ND	2.07	104	2.00	4.40	
Total Xylenes*	<0.150	0.150	03/26/2024	ND	6.19	103	6.00	3.95	
Total BTEX	<0.300	0.300	03/26/2024	ND					

Surrogate: 4-Bromofluorobenzene (PID) 114 % 71.5-134

Chloride, SM4500Cl-B		mg/kg		Analyzed By: CT					
Analyte	Result	Reporting Limit	Analyzed	Method Blank	BS	% Recovery	True Value QC	RPD	Qualifier
Chloride	128	16.0	03/26/2024	ND	416	104	400	7.41	

TPH 8015M		mg/kg		Analyzed By: MS					
Analyte	Result	Reporting Limit	Analyzed	Method Blank	BS	% Recovery	True Value QC	RPD	Qualifier
GRO C6-C10*	<10.0	10.0	03/25/2024	ND	214	107	200	6.52	
DRO >C10-C28*	<10.0	10.0	03/25/2024	ND	200	100	200	8.31	
EXT DRO >C28-C36	<10.0	10.0	03/25/2024	ND					

Surrogate: 1-Chlorooctane 105 % 48.2-134

Surrogate: 1-Chlorooctadecane 103 % 49.1-148

Cardinal Laboratories

\*=Accredited Analyte

PLEASE NOTE: Liability and Damages. Cardinal's liability and client's exclusive remedy for any claim arising, whether based in contract or tort, shall be limited to the amount paid by client for analyses. All claims, including those for negligence and any other cause whatsoever shall be deemed waived unless made in writing and received by Cardinal within thirty (30) days after completion of the applicable service. In no event shall Cardinal be liable for incidental or consequential damages, including, without limitation, business interruptions, loss of use, or loss of profits incurred by client, its subsidiaries, affiliates or successors arising out of or related to the performance of the services hereunder by Cardinal, regardless of whether such claim is based upon any of the above stated reasons or otherwise. Results relate only to the samples identified above. This report shall not be reproduced except in full with written approval of Cardinal Laboratories.

Celey D. Keene, Lab Director/Quality Manager



PHONE (575) 393-2326 ° 101 E. MARLAND ° HOBBS, NM 88240

**Analytical Results For:**

CARMONA RESOURCES  
 ASHTON THIELKE  
 310 W WALL ST, SUITE 500  
 MIDLAND TX, 79701  
 Fax To:

Received:	03/22/2024	Sampling Date:	03/22/2024
Reported:	03/28/2024	Sampling Type:	Soil
Project Name:	CULEBRA BLUFF SECTION 25 CTB	Sampling Condition:	Cool & Intact
Project Number:	2312	Sample Received By:	Tamara Oldaker
Project Location:	EDDY CO NM		

**Sample ID: H - 3 ( 0-0.5' ) (H241518-03)**

BTEX 8021B		mg/kg		Analyzed By: JH						
Analyte	Result	Reporting Limit	Analyzed	Method Blank	BS	% Recovery	True Value QC	RPD	Qualifier	
Benzene*	<0.050	0.050	03/26/2024	ND	2.02	101	2.00	5.00		
Toluene*	<0.050	0.050	03/26/2024	ND	2.08	104	2.00	4.49		
Ethylbenzene*	<0.050	0.050	03/26/2024	ND	2.07	104	2.00	4.40		
Total Xylenes*	<0.150	0.150	03/26/2024	ND	6.19	103	6.00	3.95		
Total BTEX	<0.300	0.300	03/26/2024	ND						

Surrogate: 4-Bromofluorobenzene (PID) 115 % 71.5-134

Chloride, SM4500Cl-B		mg/kg		Analyzed By: CT						
Analyte	Result	Reporting Limit	Analyzed	Method Blank	BS	% Recovery	True Value QC	RPD	Qualifier	
Chloride	416	16.0	03/26/2024	ND	416	104	400	7.41		

TPH 8015M		mg/kg		Analyzed By: MS					
Analyte	Result	Reporting Limit	Analyzed	Method Blank	BS	% Recovery	True Value QC	RPD	Qualifier
GRO C6-C10*	<10.0	10.0	03/25/2024	ND	214	107	200	6.52	
DRO >C10-C28*	<10.0	10.0	03/25/2024	ND	200	100	200	8.31	
EXT DRO >C28-C36	<10.0	10.0	03/25/2024	ND					

Surrogate: 1-Chlorooctane 104 % 48.2-134

Surrogate: 1-Chlorooctadecane 99.5 % 49.1-148

Cardinal Laboratories

\*=Accredited Analyte

PLEASE NOTE: Liability and Damages. Cardinal's liability and client's exclusive remedy for any claim arising, whether based in contract or tort, shall be limited to the amount paid by client for analyses. All claims, including those for negligence and any other cause whatsoever shall be deemed waived unless made in writing and received by Cardinal within thirty (30) days after completion of the applicable service. In no event shall Cardinal be liable for incidental or consequential damages, including, without limitation, business interruptions, loss of use, or loss of profits incurred by client, its subsidiaries, affiliates or successors arising out of or related to the performance of the services hereunder by Cardinal, regardless of whether such claim is based upon any of the above stated reasons or otherwise. Results relate only to the samples identified above. This report shall not be reproduced except in full with written approval of Cardinal Laboratories.

Celey D. Keene, Lab Director/Quality Manager



PHONE (575) 393-2326 ° 101 E. MARLAND ° HOBBS, NM 88240

**Analytical Results For:**

CARMONA RESOURCES  
 ASHTON THIELKE  
 310 W WALL ST, SUITE 500  
 MIDLAND TX, 79701  
 Fax To:

Received:	03/22/2024	Sampling Date:	03/22/2024
Reported:	03/28/2024	Sampling Type:	Soil
Project Name:	CULEBRA BLUFF SECTION 25 CTB	Sampling Condition:	Cool & Intact
Project Number:	2312	Sample Received By:	Tamara Oldaker
Project Location:	EDDY CO NM		

**Sample ID: H - 4 ( 0-0.5' ) (H241518-04)**

BTEx 8021B		mg/kg		Analyzed By: JH					
Analyte	Result	Reporting Limit	Analyzed	Method Blank	BS	% Recovery	True Value QC	RPD	Qualifier
Benzene*	<0.050	0.050	03/26/2024	ND	2.02	101	2.00	5.00	
Toluene*	<0.050	0.050	03/26/2024	ND	2.08	104	2.00	4.49	
Ethylbenzene*	<0.050	0.050	03/26/2024	ND	2.07	104	2.00	4.40	
Total Xylenes*	<0.150	0.150	03/26/2024	ND	6.19	103	6.00	3.95	
Total BTEX	<0.300	0.300	03/26/2024	ND					

Surrogate: 4-Bromofluorobenzene (PID) 113 % 71.5-134

Chloride, SM4500Cl-B		mg/kg		Analyzed By: CT					
Analyte	Result	Reporting Limit	Analyzed	Method Blank	BS	% Recovery	True Value QC	RPD	Qualifier
Chloride	416	16.0	03/26/2024	ND	416	104	400	7.41	

TPH 8015M		mg/kg		Analyzed By: MS					
Analyte	Result	Reporting Limit	Analyzed	Method Blank	BS	% Recovery	True Value QC	RPD	Qualifier
GRO C6-C10*	<10.0	10.0	03/26/2024	ND	214	107	200	6.52	
DRO >C10-C28*	<10.0	10.0	03/26/2024	ND	200	100	200	8.31	
EXT DRO >C28-C36	<10.0	10.0	03/26/2024	ND					

Surrogate: 1-Chlorooctane 84.3 % 48.2-134

Surrogate: 1-Chlorooctadecane 81.2 % 49.1-148

Cardinal Laboratories

\*=Accredited Analyte

PLEASE NOTE: Liability and Damages. Cardinal's liability and client's exclusive remedy for any claim arising, whether based in contract or tort, shall be limited to the amount paid by client for analyses. All claims, including those for negligence and any other cause whatsoever shall be deemed waived unless made in writing and received by Cardinal within thirty (30) days after completion of the applicable service. In no event shall Cardinal be liable for incidental or consequential damages, including, without limitation, business interruptions, loss of use, or loss of profits incurred by client, its subsidiaries, affiliates or successors arising out of or related to the performance of the services hereunder by Cardinal, regardless of whether such claim is based upon any of the above stated reasons or otherwise. Results relate only to the samples identified above. This report shall not be reproduced except in full with written approval of Cardinal Laboratories.

Celey D. Keene, Lab Director/Quality Manager





PHONE (575) 393-2326 ° 101 E. MARLAND ° HOBBS, NM 88240

**Analytical Results For:**

CARMONA RESOURCES  
 ASHTON THIELKE  
 310 W WALL ST, SUITE 500  
 MIDLAND TX, 79701  
 Fax To:

Received:	03/22/2024	Sampling Date:	03/22/2024
Reported:	03/28/2024	Sampling Type:	Soil
Project Name:	CULEBRA BLUFF SECTION 25 CTB	Sampling Condition:	Cool & Intact
Project Number:	2312	Sample Received By:	Tamara Oldaker
Project Location:	EDDY CO NM		

**Sample ID: H - 5 ( 0-0.5' ) (H241518-05)**

BTEx 8021B		mg/kg		Analyzed By: JH					
Analyte	Result	Reporting Limit	Analyzed	Method Blank	BS	% Recovery	True Value QC	RPD	Qualifier
Benzene*	<0.050	0.050	03/26/2024	ND	2.02	101	2.00	5.00	
Toluene*	<0.050	0.050	03/26/2024	ND	2.08	104	2.00	4.49	
Ethylbenzene*	<0.050	0.050	03/26/2024	ND	2.07	104	2.00	4.40	
Total Xylenes*	<0.150	0.150	03/26/2024	ND	6.19	103	6.00	3.95	
Total BTEX	<0.300	0.300	03/26/2024	ND					

Surrogate: 4-Bromofluorobenzene (PID) 114 % 71.5-134

Chloride, SM4500Cl-B		mg/kg		Analyzed By: CT					
Analyte	Result	Reporting Limit	Analyzed	Method Blank	BS	% Recovery	True Value QC	RPD	Qualifier
Chloride	368	16.0	03/26/2024	ND	416	104	400	7.41	

TPH 8015M		mg/kg		Analyzed By: MS					
Analyte	Result	Reporting Limit	Analyzed	Method Blank	BS	% Recovery	True Value QC	RPD	Qualifier
GRO C6-C10*	<10.0	10.0	03/26/2024	ND	214	107	200	6.52	
DRO >C10-C28*	<10.0	10.0	03/26/2024	ND	200	100	200	8.31	
EXT DRO >C28-C36	<10.0	10.0	03/26/2024	ND					

Surrogate: 1-Chlorooctane 96.9 % 48.2-134

Surrogate: 1-Chlorooctadecane 91.8 % 49.1-148

Cardinal Laboratories

\*=Accredited Analyte

PLEASE NOTE: Liability and Damages. Cardinal's liability and client's exclusive remedy for any claim arising, whether based in contract or tort, shall be limited to the amount paid by client for analyses. All claims, including those for negligence and any other cause whatsoever shall be deemed waived unless made in writing and received by Cardinal within thirty (30) days after completion of the applicable service. In no event shall Cardinal be liable for incidental or consequential damages, including, without limitation, business interruptions, loss of use, or loss of profits incurred by client, its subsidiaries, affiliates or successors arising out of or related to the performance of the services hereunder by Cardinal, regardless of whether such claim is based upon any of the above stated reasons or otherwise. Results relate only to the samples identified above. This report shall not be reproduced except in full with written approval of Cardinal Laboratories.

Celey D. Keene, Lab Director/Quality Manager



PHONE (575) 393-2326 ° 101 E. MARLAND ° HOBBS, NM 88240

**Analytical Results For:**

CARMONA RESOURCES  
 ASHTON THIELKE  
 310 W WALL ST, SUITE 500  
 MIDLAND TX, 79701  
 Fax To:

Received: 03/22/2024  
 Reported: 03/28/2024  
 Project Name: CULEBRA BLUFF SECTION 25 CTB  
 Project Number: 2312  
 Project Location: EDDY CO NM

Sampling Date: 03/22/2024  
 Sampling Type: Soil  
 Sampling Condition: Cool & Intact  
 Sample Received By: Tamara Oldaker

**Sample ID: H - 6 ( 0-0.5' ) (H241518-06)**

BTEx 8021B		mg/kg		Analyzed By: JH					
Analyte	Result	Reporting Limit	Analyzed	Method Blank	BS	% Recovery	True Value QC	RPD	Qualifier
Benzene*	<0.050	0.050	03/26/2024	ND	2.02	101	2.00	5.00	
Toluene*	<0.050	0.050	03/26/2024	ND	2.08	104	2.00	4.49	
Ethylbenzene*	<0.050	0.050	03/26/2024	ND	2.07	104	2.00	4.40	
Total Xylenes*	<0.150	0.150	03/26/2024	ND	6.19	103	6.00	3.95	
Total BTEX	<0.300	0.300	03/26/2024	ND					

Surrogate: 4-Bromofluorobenzene (PID) 112 % 71.5-134

Chloride, SM4500Cl-B		mg/kg		Analyzed By: CT					
Analyte	Result	Reporting Limit	Analyzed	Method Blank	BS	% Recovery	True Value QC	RPD	Qualifier
Chloride	192	16.0	03/26/2024	ND	416	104	400	7.41	

TPH 8015M		mg/kg		Analyzed By: MS					
Analyte	Result	Reporting Limit	Analyzed	Method Blank	BS	% Recovery	True Value QC	RPD	Qualifier
GRO C6-C10*	<10.0	10.0	03/26/2024	ND	214	107	200	6.52	
DRO >C10-C28*	<10.0	10.0	03/26/2024	ND	200	100	200	8.31	
EXT DRO >C28-C36	<10.0	10.0	03/26/2024	ND					

Surrogate: 1-Chlorooctane 113 % 48.2-134

Surrogate: 1-Chlorooctadecane 109 % 49.1-148

Cardinal Laboratories

\*=Accredited Analyte

PLEASE NOTE: Liability and Damages. Cardinal's liability and client's exclusive remedy for any claim arising, whether based in contract or tort, shall be limited to the amount paid by client for analyses. All claims, including those for negligence and any other cause whatsoever shall be deemed waived unless made in writing and received by Cardinal within thirty (30) days after completion of the applicable service. In no event shall Cardinal be liable for incidental or consequential damages, including, without limitation, business interruptions, loss of use, or loss of profits incurred by client, its subsidiaries, affiliates or successors arising out of or related to the performance of the services hereunder by Cardinal, regardless of whether such claim is based upon any of the above stated reasons or otherwise. Results relate only to the samples identified above. This report shall not be reproduced except in full with written approval of Cardinal Laboratories.

Celey D. Keene, Lab Director/Quality Manager



PHONE (575) 393-2326 ° 101 E. MARLAND ° HOBBS, NM 88240

### Notes and Definitions

- QR-03      The RPD value for the sample duplicate or MS/MSD was outside of QC acceptance limits due to matrix interference. QC batch accepted based on LCS and/or LCSD recovery and/or RPD values.
- ND      Analyte NOT DETECTED at or above the reporting limit
- RPD      Relative Percent Difference
- \*\*      Samples not received at proper temperature of 6°C or below.
- \*\*\*      Insufficient time to reach temperature.
- Chloride by SM4500Cl-B does not require samples be received at or below 6°C  
Samples reported on an as received basis (wet) unless otherwise noted on report

Cardinal Laboratories

\*=Accredited Analyte

PLEASE NOTE: Liability and Damages. Cardinal's liability and client's exclusive remedy for any claim arising, whether based in contract or tort, shall be limited to the amount paid by client for analyses. All claims, including those for negligence and any other cause whatsoever shall be deemed waived unless made in writing and received by Cardinal within thirty (30) days after completion of the applicable service. In no event shall Cardinal be liable for incidental or consequential damages, including, without limitation, business interruptions, loss of use, or loss of profits incurred by client, its subsidiaries, affiliates or successors arising out of or related to the performance of the services hereunder by Cardinal, regardless of whether such claim is based upon any of the above stated reasons or otherwise. Results relate only to the samples identified above. This report shall not be reproduced except in full with written approval of Cardinal Laboratories.

A handwritten signature in black ink, appearing to read "Celey D. Keene".

Celey D. Keene, Lab Director/Quality Manager

Chain of Custody

Work Order No:

1241518

Page 1 of 1

Project Manager:	Ashion Thielke	Bill to: (if different)	Carmona Resources
Company Name:	Carmona Resources	Company Name:	
Address:	310 West Wall Ste. 500	Address:	
City, State ZIP:	Midland, TX 79701	City, State ZIP:	
Phone:	432-813-8988	Email:	ThielkeA@Carmonaresources.com

Work Order Comments	
Program: UST/PST	<input type="checkbox"/> PRP <input type="checkbox"/> Rowfields <input type="checkbox"/> RC <input type="checkbox"/> pertund
State of Project:	
Reporting Level II	<input type="checkbox"/> Level III <input type="checkbox"/> ST/UST <input type="checkbox"/> RRP <input type="checkbox"/> Level IV
Deliverables: EDD	<input type="checkbox"/> ADAPT <input type="checkbox"/> Other:

Project Name:	Culebra Bluff Section 25 CTB	Turn Around	<input checked="" type="checkbox"/> Routine <input type="checkbox"/> Rush	Pres. Code	ANALYSIS REQUEST												Preservative Codes									
Project Number:	2312	Due Date:	Normal														None: NO	DI Water: H <sub>2</sub> O								
Project Location:	Eddy Co. NM	TAT starts the day received by the lab, if received by 4:30pm															Cool: Cool	MeOH: Me								
Sampler's Name:	GPJ																HCL: HC	HNO <sub>3</sub> : HN								
PO #:																	H <sub>2</sub> SO <sub>4</sub> : H <sub>2</sub>	NaOH: Na								
SAMPLE RECEIPT	Temp Blank:	Yes (No)	Wet Ice:	Yes (No)													H <sub>3</sub> PO <sub>4</sub> : HP									
	Received Intact:	Yes (No)	Thermometer ID:														NaHSO <sub>4</sub> : NABIS									
	Cooler Custody Seals:	Yes (No)	Correction Factor:														Na <sub>2</sub> S <sub>2</sub> O <sub>3</sub> : NASO <sub>3</sub>									
	Sample Custody Seals:	Yes (No)	Temperature Reading:														Zn Acetate+NaOH: Zn									
	Total Containers:	Yes (No)	Corrected Temperature:														NaOH+Ascorbic Acid: SAPC									
Sample Identification				Date	Time	Soil	Water	Grab/Comp	# of Cont	Parameters												Sample Comments				
H-1 (0-0.5')				3/22/2024		X		G	1	X	X	X	BTEx 8021B													
H-2 (0-0.5')				3/22/2024		X		G	1	X	X	X	TPH 8015M ( GRO + DRO + MRO)													
H-3 (0-0.5')				3/22/2024		X		G	1	X	X	X	Chloride 4500													
H-4 (0-0.5')				3/22/2024		X		G	1	X	X	X														
H-5 (0-0.5')				3/22/2024		X		G	1	X	X	X														
H-6 (0-0.5')				3/22/2024		X		G	1	X	X	X														

Please send results to cmoehring@carmonaresources.com and mcarmona@carmonaresources.com

Relinquished by: (Signature)	Received by: (Signature)	Date/Time	Relinquished by: (Signature)	Received by: (Signature)	Date/Time
		3-22-24 11:00			





PHONE (575) 393-2326 ° 101 E. MARLAND ° HOBBS, NM 88240

April 03, 2024

ASHTON THIELKE

CARMONA RESOURCES

310 W WALL ST, SUITE 500

MIDLAND, TX 79701

RE: CULEBRA BLUFF SECTION 25 CTB

Enclosed are the results of analyses for samples received by the laboratory on 03/27/24 16:10.

Cardinal Laboratories is accredited through Texas NELAP under certificate number T104704398-23-16. Accreditation applies to drinking water, non-potable water and solid and chemical materials. All accredited analytes are denoted by an asterisk (\*). For a complete list of accredited analytes and matrices visit the TCEQ website at [www.tceq.texas.gov/field/qa/lab\\_accred\\_certif.html](http://www.tceq.texas.gov/field/qa/lab_accred_certif.html).

Cardinal Laboratories is accredited through the State of Colorado Department of Public Health and Environment for:

Method EPA 552.2	Haloacetic Acids (HAA-5)
Method EPA 524.2	Total Trihalomethanes (TTHM)
Method EPA 524.4	Regulated VOCs (V1, V2, V3)

Accreditation applies to public drinking water matrices.

This report meets NELAP requirements and is made up of a cover page, analytical results, and a copy of the original chain-of-custody. If you have any questions concerning this report, please feel free to contact me.

Sincerely,

A handwritten signature in black ink that reads "Celey D. Keene". The signature is written in a cursive style with a large, stylized 'C' and 'K'.

Celey D. Keene

Lab Director/Quality Manager



PHONE (575) 393-2326 ° 101 E. MARLAND ° HOBBS, NM 88240

**Analytical Results For:**

CARMONA RESOURCES  
 ASHTON THIELKE  
 310 W WALL ST, SUITE 500  
 MIDLAND TX, 79701  
 Fax To:

Received:	03/27/2024	Sampling Date:	03/26/2024
Reported:	04/03/2024	Sampling Type:	Soil
Project Name:	CULEBRA BLUFF SECTION 25 CTB	Sampling Condition:	Cool & Intact
Project Number:	2312	Sample Received By:	Tamara Oldaker
Project Location:	EDDY CO NM		

**Sample ID: T - 1 (0-1') (H241615-01)**

BTEx 8021B		mg/kg		Analyzed By: JH					
Analyte	Result	Reporting Limit	Analyzed	Method Blank	BS	% Recovery	True Value QC	RPD	Qualifier
Benzene*	<0.050	0.050	03/29/2024	ND	2.07	104	2.00	5.54	
<b>Toluene*</b>	<b>0.352</b>	0.050	03/29/2024	ND	2.08	104	2.00	8.46	
<b>Ethylbenzene*</b>	<b>0.320</b>	0.050	03/29/2024	ND	2.14	107	2.00	9.40	
<b>Total Xylenes*</b>	<b>4.76</b>	0.150	03/29/2024	ND	6.34	106	6.00	9.31	
<b>Total BTEX</b>	<b>5.43</b>	0.300	03/29/2024	ND					

Surrogate: 4-Bromofluorobenzene (PID) 124 % 71.5-134

Chloride, SM4500Cl-B		mg/kg		Analyzed By: HM					
Analyte	Result	Reporting Limit	Analyzed	Method Blank	BS	% Recovery	True Value QC	RPD	Qualifier
<b>Chloride</b>	<b>176</b>	16.0	04/01/2024	ND	432	108	400	3.77	

TPH 8015M		mg/kg		Analyzed By: MS					
Analyte	Result	Reporting Limit	Analyzed	Method Blank	BS	% Recovery	True Value QC	RPD	Qualifier
<b>GRO C6-C10*</b>	<b>154</b>	10.0	03/28/2024	ND	196	98.0	200	1.31	
<b>DRO &gt;C10-C28*</b>	<b>1270</b>	10.0	03/28/2024	ND	201	101	200	1.82	
<b>EXT DRO &gt;C28-C36</b>	<b>225</b>	10.0	03/28/2024	ND					

Surrogate: 1-Chlorooctane 92.1 % 48.2-134

Surrogate: 1-Chlorooctadecane 96.6 % 49.1-148

Cardinal Laboratories

\*=Accredited Analyte

PLEASE NOTE: Liability and Damages. Cardinal's liability and client's exclusive remedy for any claim arising, whether based in contract or tort, shall be limited to the amount paid by client for analyses. All claims, including those for negligence and any other cause whatsoever shall be deemed waived unless made in writing and received by Cardinal within thirty (30) days after completion of the applicable service. In no event shall Cardinal be liable for incidental or consequential damages, including, without limitation, business interruptions, loss of use, or loss of profits incurred by client, its subsidiaries, affiliates or successors arising out of or related to the performance of the services hereunder by Cardinal, regardless of whether such claim is based upon any of the above stated reasons or otherwise. Results relate only to the samples identified above. This report shall not be reproduced except in full with written approval of Cardinal Laboratories.

Celey D. Keene, Lab Director/Quality Manager



PHONE (575) 393-2326 ° 101 E. MARLAND ° HOBBS, NM 88240

**Analytical Results For:**

CARMONA RESOURCES  
 ASHTON THIELKE  
 310 W WALL ST, SUITE 500  
 MIDLAND TX, 79701  
 Fax To:

Received: 03/27/2024  
 Reported: 04/03/2024  
 Project Name: CULEBRA BLUFF SECTION 25 CTB  
 Project Number: 2312  
 Project Location: EDDY CO NM

Sampling Date: 03/26/2024  
 Sampling Type: Soil  
 Sampling Condition: Cool & Intact  
 Sample Received By: Tamara Oldaker

**Sample ID: T - 1 (2') (H241615-02)**

BTEx 8021B		mg/kg		Analyzed By: JH					
Analyte	Result	Reporting Limit	Analyzed	Method Blank	BS	% Recovery	True Value QC	RPD	Qualifier
Benzene*	<0.050	0.050	03/29/2024	ND	2.07	104	2.00	5.54	
Toluene*	<0.050	0.050	03/29/2024	ND	2.08	104	2.00	8.46	
Ethylbenzene*	<0.050	0.050	03/29/2024	ND	2.14	107	2.00	9.40	
Total Xylenes*	<0.150	0.150	03/29/2024	ND	6.34	106	6.00	9.31	
Total BTEX	<0.300	0.300	03/29/2024	ND					

Surrogate: 4-Bromofluorobenzene (PID) 113 % 71.5-134

Chloride, SM4500Cl-B		mg/kg		Analyzed By: HM					
Analyte	Result	Reporting Limit	Analyzed	Method Blank	BS	% Recovery	True Value QC	RPD	Qualifier
Chloride	112	16.0	04/01/2024	ND	432	108	400	3.77	

TPH 8015M		mg/kg		Analyzed By: MS					
Analyte	Result	Reporting Limit	Analyzed	Method Blank	BS	% Recovery	True Value QC	RPD	Qualifier
GRO C6-C10*	<10.0	10.0	03/28/2024	ND	196	98.0	200	1.31	
DRO >C10-C28*	26.2	10.0	03/28/2024	ND	201	101	200	1.82	
EXT DRO >C28-C36	<10.0	10.0	03/28/2024	ND					

Surrogate: 1-Chlorooctane 94.9 % 48.2-134

Surrogate: 1-Chlorooctadecane 105 % 49.1-148

Cardinal Laboratories

\*=Accredited Analyte

PLEASE NOTE: Liability and Damages. Cardinal's liability and client's exclusive remedy for any claim arising, whether based in contract or tort, shall be limited to the amount paid by client for analyses. All claims, including those for negligence and any other cause whatsoever shall be deemed waived unless made in writing and received by Cardinal within thirty (30) days after completion of the applicable service. In no event shall Cardinal be liable for incidental or consequential damages, including, without limitation, business interruptions, loss of use, or loss of profits incurred by client, its subsidiaries, affiliates or successors arising out of or related to the performance of the services hereunder by Cardinal, regardless of whether such claim is based upon any of the above stated reasons or otherwise. Results relate only to the samples identified above. This report shall not be reproduced except in full with written approval of Cardinal Laboratories.

Celey D. Keene, Lab Director/Quality Manager



PHONE (575) 393-2326 ° 101 E. MARLAND ° HOBBS, NM 88240

**Analytical Results For:**

CARMONA RESOURCES  
 ASHTON THIELKE  
 310 W WALL ST, SUITE 500  
 MIDLAND TX, 79701  
 Fax To:

Received: 03/27/2024  
 Reported: 04/03/2024  
 Project Name: CULEBRA BLUFF SECTION 25 CTB  
 Project Number: 2312  
 Project Location: EDDY CO NM

Sampling Date: 03/26/2024  
 Sampling Type: Soil  
 Sampling Condition: Cool & Intact  
 Sample Received By: Tamara Oldaker

**Sample ID: T - 1 (3') (H241615-03)**

BTEx 8021B		mg/kg		Analyzed By: JH					
Analyte	Result	Reporting Limit	Analyzed	Method Blank	BS	% Recovery	True Value QC	RPD	Qualifier
Benzene*	<0.050	0.050	03/29/2024	ND	2.07	104	2.00	5.54	
Toluene*	<0.050	0.050	03/29/2024	ND	2.08	104	2.00	8.46	
Ethylbenzene*	<0.050	0.050	03/29/2024	ND	2.14	107	2.00	9.40	
Total Xylenes*	<0.150	0.150	03/29/2024	ND	6.34	106	6.00	9.31	
Total BTEX	<0.300	0.300	03/29/2024	ND					

Surrogate: 4-Bromofluorobenzene (PID) 122 % 71.5-134

Chloride, SM4500Cl-B		mg/kg		Analyzed By: HM					
Analyte	Result	Reporting Limit	Analyzed	Method Blank	BS	% Recovery	True Value QC	RPD	Qualifier
Chloride	48.0	16.0	04/01/2024	ND	432	108	400	3.77	

TPH 8015M		mg/kg		Analyzed By: MS					
Analyte	Result	Reporting Limit	Analyzed	Method Blank	BS	% Recovery	True Value QC	RPD	Qualifier
GRO C6-C10*	<10.0	10.0	03/28/2024	ND	196	98.0	200	1.31	
DRO >C10-C28*	<10.0	10.0	03/28/2024	ND	201	101	200	1.82	
EXT DRO >C28-C36	<10.0	10.0	03/28/2024	ND					

Surrogate: 1-Chlorooctane 100 % 48.2-134

Surrogate: 1-Chlorooctadecane 113 % 49.1-148

Cardinal Laboratories

\*=Accredited Analyte

PLEASE NOTE: Liability and Damages. Cardinal's liability and client's exclusive remedy for any claim arising, whether based in contract or tort, shall be limited to the amount paid by client for analyses. All claims, including those for negligence and any other cause whatsoever shall be deemed waived unless made in writing and received by Cardinal within thirty (30) days after completion of the applicable service. In no event shall Cardinal be liable for incidental or consequential damages, including, without limitation, business interruptions, loss of use, or loss of profits incurred by client, its subsidiaries, affiliates or successors arising out of or related to the performance of the services hereunder by Cardinal, regardless of whether such claim is based upon any of the above stated reasons or otherwise. Results relate only to the samples identified above. This report shall not be reproduced except in full with written approval of Cardinal Laboratories.

Celey D. Keene, Lab Director/Quality Manager





PHONE (575) 393-2326 ° 101 E. MARLAND ° HOBBS, NM 88240

**Analytical Results For:**

CARMONA RESOURCES  
 ASHTON THIELKE  
 310 W WALL ST, SUITE 500  
 MIDLAND TX, 79701  
 Fax To:

Received:	03/27/2024	Sampling Date:	03/26/2024
Reported:	04/03/2024	Sampling Type:	Soil
Project Name:	CULEBRA BLUFF SECTION 25 CTB	Sampling Condition:	Cool & Intact
Project Number:	2312	Sample Received By:	Tamara Oldaker
Project Location:	EDDY CO NM		

**Sample ID: T - 1 (4') (H241615-04)**

BTEx 8021B		mg/kg		Analyzed By: JH						
Analyte	Result	Reporting Limit	Analyzed	Method Blank	BS	% Recovery	True Value QC	RPD	Qualifier	
Benzene*	<0.050	0.050	03/29/2024	ND	2.07	104	2.00	5.54		
Toluene*	<0.050	0.050	03/29/2024	ND	2.08	104	2.00	8.46		
Ethylbenzene*	<0.050	0.050	03/29/2024	ND	2.14	107	2.00	9.40		
Total Xylenes*	<0.150	0.150	03/29/2024	ND	6.34	106	6.00	9.31		
Total BTEX	<0.300	0.300	03/29/2024	ND						

Surrogate: 4-Bromofluorobenzene (PID) 111 % 71.5-134

Chloride, SM4500Cl-B		mg/kg		Analyzed By: HM						
Analyte	Result	Reporting Limit	Analyzed	Method Blank	BS	% Recovery	True Value QC	RPD	Qualifier	
Chloride	336	16.0	04/01/2024	ND	432	108	400	3.77		

TPH 8015M		mg/kg		Analyzed By: MS					
Analyte	Result	Reporting Limit	Analyzed	Method Blank	BS	% Recovery	True Value QC	RPD	Qualifier
GRO C6-C10*	<10.0	10.0	03/28/2024	ND	196	98.0	200	1.31	
DRO >C10-C28*	<10.0	10.0	03/28/2024	ND	201	101	200	1.82	
EXT DRO >C28-C36	<10.0	10.0	03/28/2024	ND					

Surrogate: 1-Chlorooctane 99.1 % 48.2-134

Surrogate: 1-Chlorooctadecane 109 % 49.1-148

Cardinal Laboratories

\*=Accredited Analyte

PLEASE NOTE: Liability and Damages. Cardinal's liability and client's exclusive remedy for any claim arising, whether based in contract or tort, shall be limited to the amount paid by client for analyses. All claims, including those for negligence and any other cause whatsoever shall be deemed waived unless made in writing and received by Cardinal within thirty (30) days after completion of the applicable service. In no event shall Cardinal be liable for incidental or consequential damages, including, without limitation, business interruptions, loss of use, or loss of profits incurred by client, its subsidiaries, affiliates or successors arising out of or related to the performance of the services hereunder by Cardinal, regardless of whether such claim is based upon any of the above stated reasons or otherwise. Results relate only to the samples identified above. This report shall not be reproduced except in full with written approval of Cardinal Laboratories.

Celey D. Keene, Lab Director/Quality Manager



PHONE (575) 393-2326 ° 101 E. MARLAND ° HOBBS, NM 88240

**Analytical Results For:**

CARMONA RESOURCES  
 ASHTON THIELKE  
 310 W WALL ST, SUITE 500  
 MIDLAND TX, 79701  
 Fax To:

Received:	03/27/2024	Sampling Date:	03/26/2024
Reported:	04/03/2024	Sampling Type:	Soil
Project Name:	CULEBRA BLUFF SECTION 25 CTB	Sampling Condition:	Cool & Intact
Project Number:	2312	Sample Received By:	Tamara Oldaker
Project Location:	EDDY CO NM		

**Sample ID: T - 2 (0-1') (H241615-05)**

BTX 8021B		mg/kg		Analyzed By: JH					
Analyte	Result	Reporting Limit	Analyzed	Method Blank	BS	% Recovery	True Value QC	RPD	Qualifier
Benzene*	<0.050	0.050	03/29/2024	ND	2.07	104	2.00	5.54	
Toluene*	<0.050	0.050	03/29/2024	ND	2.08	104	2.00	8.46	
Ethylbenzene*	<0.050	0.050	03/29/2024	ND	2.14	107	2.00	9.40	
Total Xylenes*	<0.150	0.150	03/29/2024	ND	6.34	106	6.00	9.31	
Total BTX	<0.300	0.300	03/29/2024	ND					

Surrogate: 4-Bromofluorobenzene (PID) 112 % 71.5-134

Chloride, SM4500Cl-B		mg/kg		Analyzed By: HM					
Analyte	Result	Reporting Limit	Analyzed	Method Blank	BS	% Recovery	True Value QC	RPD	Qualifier
Chloride	400	16.0	04/01/2024	ND	432	108	400	3.77	

TPH 8015M		mg/kg		Analyzed By: MS					
Analyte	Result	Reporting Limit	Analyzed	Method Blank	BS	% Recovery	True Value QC	RPD	Qualifier
GRO C6-C10*	<10.0	10.0	03/28/2024	ND	196	98.0	200	1.31	
DRO >C10-C28*	60.9	10.0	03/28/2024	ND	201	101	200	1.82	
EXT DRO >C28-C36	<10.0	10.0	03/28/2024	ND					

Surrogate: 1-Chlorooctane 100 % 48.2-134

Surrogate: 1-Chlorooctadecane 110 % 49.1-148

Cardinal Laboratories

\*=Accredited Analyte

PLEASE NOTE: Liability and Damages. Cardinal's liability and client's exclusive remedy for any claim arising, whether based in contract or tort, shall be limited to the amount paid by client for analyses. All claims, including those for negligence and any other cause whatsoever shall be deemed waived unless made in writing and received by Cardinal within thirty (30) days after completion of the applicable service. In no event shall Cardinal be liable for incidental or consequential damages, including, without limitation, business interruptions, loss of use, or loss of profits incurred by client, its subsidiaries, affiliates or successors arising out of or related to the performance of the services hereunder by Cardinal, regardless of whether such claim is based upon any of the above stated reasons or otherwise. Results relate only to the samples identified above. This report shall not be reproduced except in full with written approval of Cardinal Laboratories.

Celey D. Keene, Lab Director/Quality Manager



PHONE (575) 393-2326 ° 101 E. MARLAND ° HOBBS, NM 88240

**Analytical Results For:**

CARMONA RESOURCES  
 ASHTON THIELKE  
 310 W WALL ST, SUITE 500  
 MIDLAND TX, 79701  
 Fax To:

Received:	03/27/2024	Sampling Date:	03/26/2024
Reported:	04/03/2024	Sampling Type:	Soil
Project Name:	CULEBRA BLUFF SECTION 25 CTB	Sampling Condition:	Cool & Intact
Project Number:	2312	Sample Received By:	Tamara Oldaker
Project Location:	EDDY CO NM		

**Sample ID: T - 2 (2') (H241615-06)**

BTEx 8021B		mg/kg		Analyzed By: JH					
Analyte	Result	Reporting Limit	Analyzed	Method Blank	BS	% Recovery	True Value QC	RPD	Qualifier
Benzene*	<0.050	0.050	03/29/2024	ND	2.07	104	2.00	5.54	
Toluene*	<0.050	0.050	03/29/2024	ND	2.08	104	2.00	8.46	
Ethylbenzene*	<0.050	0.050	03/29/2024	ND	2.14	107	2.00	9.40	
Total Xylenes*	<0.150	0.150	03/29/2024	ND	6.34	106	6.00	9.31	
Total BTEX	<0.300	0.300	03/29/2024	ND					

Surrogate: 4-Bromofluorobenzene (PID) 118 % 71.5-134

Chloride, SM4500Cl-B		mg/kg		Analyzed By: HM					
Analyte	Result	Reporting Limit	Analyzed	Method Blank	BS	% Recovery	True Value QC	RPD	Qualifier
Chloride	64.0	16.0	04/01/2024	ND	432	108	400	3.77	

TPH 8015M		mg/kg		Analyzed By: MS					
Analyte	Result	Reporting Limit	Analyzed	Method Blank	BS	% Recovery	True Value QC	RPD	Qualifier
GRO C6-C10*	<10.0	10.0	03/28/2024	ND	201	101	200	0.116	
DRO >C10-C28*	<10.0	10.0	03/28/2024	ND	216	108	200	3.32	
EXT DRO >C28-C36	<10.0	10.0	03/28/2024	ND					

Surrogate: 1-Chlorooctane 96.6 % 48.2-134

Surrogate: 1-Chlorooctadecane 101 % 49.1-148

Cardinal Laboratories

\*=Accredited Analyte

PLEASE NOTE: Liability and Damages. Cardinal's liability and client's exclusive remedy for any claim arising, whether based in contract or tort, shall be limited to the amount paid by client for analyses. All claims, including those for negligence and any other cause whatsoever shall be deemed waived unless made in writing and received by Cardinal within thirty (30) days after completion of the applicable service. In no event shall Cardinal be liable for incidental or consequential damages, including, without limitation, business interruptions, loss of use, or loss of profits incurred by client, its subsidiaries, affiliates or successors arising out of or related to the performance of the services hereunder by Cardinal, regardless of whether such claim is based upon any of the above stated reasons or otherwise. Results relate only to the samples identified above. This report shall not be reproduced except in full with written approval of Cardinal Laboratories.

Celey D. Keene, Lab Director/Quality Manager



PHONE (575) 393-2326 ° 101 E. MARLAND ° HOBBS, NM 88240

**Analytical Results For:**

CARMONA RESOURCES  
 ASHTON THIELKE  
 310 W WALL ST, SUITE 500  
 MIDLAND TX, 79701  
 Fax To:

Received: 03/27/2024  
 Reported: 04/03/2024  
 Project Name: CULEBRA BLUFF SECTION 25 CTB  
 Project Number: 2312  
 Project Location: EDDY CO NM

Sampling Date: 03/26/2024  
 Sampling Type: Soil  
 Sampling Condition: Cool & Intact  
 Sample Received By: Tamara Oldaker

**Sample ID: T - 2 (3') (H241615-07)**

BTEx 8021B		mg/kg		Analyzed By: JH					
Analyte	Result	Reporting Limit	Analyzed	Method Blank	BS	% Recovery	True Value QC	RPD	Qualifier
Benzene*	<0.050	0.050	03/29/2024	ND	2.07	104	2.00	5.54	
Toluene*	<0.050	0.050	03/29/2024	ND	2.08	104	2.00	8.46	
Ethylbenzene*	<0.050	0.050	03/29/2024	ND	2.14	107	2.00	9.40	
Total Xylenes*	<0.150	0.150	03/29/2024	ND	6.34	106	6.00	9.31	
Total BTEX	<0.300	0.300	03/29/2024	ND					

Surrogate: 4-Bromofluorobenzene (PID) 117 % 71.5-134

Chloride, SM4500Cl-B		mg/kg		Analyzed By: HM					
Analyte	Result	Reporting Limit	Analyzed	Method Blank	BS	% Recovery	True Value QC	RPD	Qualifier
Chloride	480	16.0	04/01/2024	ND	432	108	400	3.77	

TPH 8015M		mg/kg		Analyzed By: MS					
Analyte	Result	Reporting Limit	Analyzed	Method Blank	BS	% Recovery	True Value QC	RPD	Qualifier
GRO C6-C10*	<10.0	10.0	03/28/2024	ND	201	101	200	0.116	
DRO >C10-C28*	<10.0	10.0	03/28/2024	ND	216	108	200	3.32	
EXT DRO >C28-C36	<10.0	10.0	03/28/2024	ND					

Surrogate: 1-Chlorooctane 89.8 % 48.2-134

Surrogate: 1-Chlorooctadecane 92.6 % 49.1-148

Cardinal Laboratories

\*=Accredited Analyte

PLEASE NOTE: Liability and Damages. Cardinal's liability and client's exclusive remedy for any claim arising, whether based in contract or tort, shall be limited to the amount paid by client for analyses. All claims, including those for negligence and any other cause whatsoever shall be deemed waived unless made in writing and received by Cardinal within thirty (30) days after completion of the applicable service. In no event shall Cardinal be liable for incidental or consequential damages, including, without limitation, business interruptions, loss of use, or loss of profits incurred by client, its subsidiaries, affiliates or successors arising out of or related to the performance of the services hereunder by Cardinal, regardless of whether such claim is based upon any of the above stated reasons or otherwise. Results relate only to the samples identified above. This report shall not be reproduced except in full with written approval of Cardinal Laboratories.

Celey D. Keene, Lab Director/Quality Manager





PHONE (575) 393-2326 ° 101 E. MARLAND ° HOBBS, NM 88240

**Analytical Results For:**

CARMONA RESOURCES  
 ASHTON THIELKE  
 310 W WALL ST, SUITE 500  
 MIDLAND TX, 79701  
 Fax To:

Received: 03/27/2024  
 Reported: 04/03/2024  
 Project Name: CULEBRA BLUFF SECTION 25 CTB  
 Project Number: 2312  
 Project Location: EDDY CO NM

Sampling Date: 03/26/2024  
 Sampling Type: Soil  
 Sampling Condition: Cool & Intact  
 Sample Received By: Tamara Oldaker

**Sample ID: T - 2 (4') (H241615-08)**

BTEx 8021B		mg/kg		Analyzed By: JH					
Analyte	Result	Reporting Limit	Analyzed	Method Blank	BS	% Recovery	True Value QC	RPD	Qualifier
Benzene*	<0.050	0.050	03/29/2024	ND	2.07	104	2.00	5.54	
Toluene*	<0.050	0.050	03/29/2024	ND	2.08	104	2.00	8.46	
Ethylbenzene*	<0.050	0.050	03/29/2024	ND	2.14	107	2.00	9.40	
Total Xylenes*	<0.150	0.150	03/29/2024	ND	6.34	106	6.00	9.31	
Total BTEX	<0.300	0.300	03/29/2024	ND					

Surrogate: 4-Bromofluorobenzene (PID) 112 % 71.5-134

Chloride, SM4500Cl-B		mg/kg		Analyzed By: HM					
Analyte	Result	Reporting Limit	Analyzed	Method Blank	BS	% Recovery	True Value QC	RPD	Qualifier
Chloride	848	16.0	04/01/2024	ND	432	108	400	3.77	

TPH 8015M		mg/kg		Analyzed By: MS					
Analyte	Result	Reporting Limit	Analyzed	Method Blank	BS	% Recovery	True Value QC	RPD	Qualifier
GRO C6-C10*	<10.0	10.0	03/28/2024	ND	201	101	200	0.116	
DRO >C10-C28*	<10.0	10.0	03/28/2024	ND	216	108	200	3.32	
EXT DRO >C28-C36	<10.0	10.0	03/28/2024	ND					

Surrogate: 1-Chlorooctane 103 % 48.2-134

Surrogate: 1-Chlorooctadecane 107 % 49.1-148

Cardinal Laboratories

\*=Accredited Analyte

PLEASE NOTE: Liability and Damages. Cardinal's liability and client's exclusive remedy for any claim arising, whether based in contract or tort, shall be limited to the amount paid by client for analyses. All claims, including those for negligence and any other cause whatsoever shall be deemed waived unless made in writing and received by Cardinal within thirty (30) days after completion of the applicable service. In no event shall Cardinal be liable for incidental or consequential damages, including, without limitation, business interruptions, loss of use, or loss of profits incurred by client, its subsidiaries, affiliates or successors arising out of or related to the performance of the services hereunder by Cardinal, regardless of whether such claim is based upon any of the above stated reasons or otherwise. Results relate only to the samples identified above. This report shall not be reproduced except in full with written approval of Cardinal Laboratories.

Celey D. Keene, Lab Director/Quality Manager



PHONE (575) 393-2326 ° 101 E. MARLAND ° HOBBS, NM 88240

**Analytical Results For:**

CARMONA RESOURCES  
 ASHTON THIELKE  
 310 W WALL ST, SUITE 500  
 MIDLAND TX, 79701  
 Fax To:

Received: 03/27/2024  
 Reported: 04/03/2024  
 Project Name: CULEBRA BLUFF SECTION 25 CTB  
 Project Number: 2312  
 Project Location: EDDY CO NM

Sampling Date: 03/26/2024  
 Sampling Type: Soil  
 Sampling Condition: Cool & Intact  
 Sample Received By: Tamara Oldaker

**Sample ID: T - 2 (5') (H241615-09)**

BTEx 8021B		mg/kg		Analyzed By: JH						
Analyte	Result	Reporting Limit	Analyzed	Method Blank	BS	% Recovery	True Value QC	RPD	Qualifier	
Benzene*	<0.050	0.050	03/29/2024	ND	2.07	104	2.00	5.54		
Toluene*	<0.050	0.050	03/29/2024	ND	2.08	104	2.00	8.46		
Ethylbenzene*	<0.050	0.050	03/29/2024	ND	2.14	107	2.00	9.40		
Total Xylenes*	<0.150	0.150	03/29/2024	ND	6.34	106	6.00	9.31		
Total BTEX	<0.300	0.300	03/29/2024	ND						

Surrogate: 4-Bromofluorobenzene (PID) 112 % 71.5-134

Chloride, SM4500Cl-B		mg/kg		Analyzed By: HM						
Analyte	Result	Reporting Limit	Analyzed	Method Blank	BS	% Recovery	True Value QC	RPD	Qualifier	
Chloride	976	16.0	04/01/2024	ND	432	108	400	3.77		

TPH 8015M		mg/kg		Analyzed By: MS					
Analyte	Result	Reporting Limit	Analyzed	Method Blank	BS	% Recovery	True Value QC	RPD	Qualifier
GRO C6-C10*	<10.0	10.0	03/28/2024	ND	201	101	200	0.116	
DRO >C10-C28*	<10.0	10.0	03/28/2024	ND	216	108	200	3.32	
EXT DRO >C28-C36	<10.0	10.0	03/28/2024	ND					

Surrogate: 1-Chlorooctane 107 % 48.2-134

Surrogate: 1-Chlorooctadecane 111 % 49.1-148

Cardinal Laboratories

\*=Accredited Analyte

PLEASE NOTE: Liability and Damages. Cardinal's liability and client's exclusive remedy for any claim arising, whether based in contract or tort, shall be limited to the amount paid by client for analyses. All claims, including those for negligence and any other cause whatsoever shall be deemed waived unless made in writing and received by Cardinal within thirty (30) days after completion of the applicable service. In no event shall Cardinal be liable for incidental or consequential damages, including, without limitation, business interruptions, loss of use, or loss of profits incurred by client, its subsidiaries, affiliates or successors arising out of or related to the performance of the services hereunder by Cardinal, regardless of whether such claim is based upon any of the above stated reasons or otherwise. Results relate only to the samples identified above. This report shall not be reproduced except in full with written approval of Cardinal Laboratories.

Celey D. Keene, Lab Director/Quality Manager



PHONE (575) 393-2326 ° 101 E. MARLAND ° HOBBS, NM 88240

**Analytical Results For:**

CARMONA RESOURCES  
 ASHTON THIELKE  
 310 W WALL ST, SUITE 500  
 MIDLAND TX, 79701  
 Fax To:

Received:	03/27/2024	Sampling Date:	03/26/2024
Reported:	04/03/2024	Sampling Type:	Soil
Project Name:	CULEBRA BLUFF SECTION 25 CTB	Sampling Condition:	Cool & Intact
Project Number:	2312	Sample Received By:	Tamara Oldaker
Project Location:	EDDY CO NM		

**Sample ID: T - 3 (0-1') (H241615-15)**

BTEx 8021B		mg/kg		Analyzed By: JH						
Analyte	Result	Reporting Limit	Analyzed	Method Blank	BS	% Recovery	True Value QC	RPD	Qualifier	
Benzene*	<0.050	0.050	03/29/2024	ND	2.07	104	2.00	5.54		
Toluene*	<0.050	0.050	03/29/2024	ND	2.08	104	2.00	8.46		
Ethylbenzene*	<0.050	0.050	03/29/2024	ND	2.14	107	2.00	9.40		
Total Xylenes*	<0.150	0.150	03/29/2024	ND	6.34	106	6.00	9.31		
Total BTEX	<0.300	0.300	03/29/2024	ND						

Surrogate: 4-Bromofluorobenzene (PID) 120 % 71.5-134

Chloride, SM4500Cl-B		mg/kg		Analyzed By: HM						
Analyte	Result	Reporting Limit	Analyzed	Method Blank	BS	% Recovery	True Value QC	RPD	Qualifier	
Chloride	240	16.0	04/01/2024	ND	432	108	400	3.77		

TPH 8015M		mg/kg		Analyzed By: MS					
Analyte	Result	Reporting Limit	Analyzed	Method Blank	BS	% Recovery	True Value QC	RPD	Qualifier
GRO C6-C10*	<10.0	10.0	03/28/2024	ND	201	101	200	0.116	
DRO >C10-C28*	110	10.0	03/28/2024	ND	216	108	200	3.32	
EXT DRO >C28-C36	22.2	10.0	03/28/2024	ND					

Surrogate: 1-Chlorooctane 97.7 % 48.2-134

Surrogate: 1-Chlorooctadecane 100 % 49.1-148

Cardinal Laboratories

\*=Accredited Analyte

PLEASE NOTE: Liability and Damages. Cardinal's liability and client's exclusive remedy for any claim arising, whether based in contract or tort, shall be limited to the amount paid by client for analyses. All claims, including those for negligence and any other cause whatsoever shall be deemed waived unless made in writing and received by Cardinal within thirty (30) days after completion of the applicable service. In no event shall Cardinal be liable for incidental or consequential damages, including, without limitation, business interruptions, loss of use, or loss of profits incurred by client, its subsidiaries, affiliates or successors arising out of or related to the performance of the services hereunder by Cardinal, regardless of whether such claim is based upon any of the above stated reasons or otherwise. Results relate only to the samples identified above. This report shall not be reproduced except in full with written approval of Cardinal Laboratories.

Celey D. Keene, Lab Director/Quality Manager



PHONE (575) 393-2326 ° 101 E. MARLAND ° HOBBS, NM 88240

**Analytical Results For:**

CARMONA RESOURCES  
 ASHTON THIELKE  
 310 W WALL ST, SUITE 500  
 MIDLAND TX, 79701  
 Fax To:

Received:	03/27/2024	Sampling Date:	03/26/2024
Reported:	04/03/2024	Sampling Type:	Soil
Project Name:	CULEBRA BLUFF SECTION 25 CTB	Sampling Condition:	Cool & Intact
Project Number:	2312	Sample Received By:	Tamara Oldaker
Project Location:	EDDY CO NM		

**Sample ID: T - 3 (2') (H241615-16)**

BTEx 8021B		mg/kg		Analyzed By: JH						
Analyte	Result	Reporting Limit	Analyzed	Method Blank	BS	% Recovery	True Value QC	RPD	Qualifier	
Benzene*	<0.050	0.050	03/29/2024	ND	2.07	104	2.00	5.54		
Toluene*	<0.050	0.050	03/29/2024	ND	2.08	104	2.00	8.46		
Ethylbenzene*	<0.050	0.050	03/29/2024	ND	2.14	107	2.00	9.40		
Total Xylenes*	<0.150	0.150	03/29/2024	ND	6.34	106	6.00	9.31		
Total BTEX	<0.300	0.300	03/29/2024	ND						

Surrogate: 4-Bromofluorobenzene (PID) 120 % 71.5-134

Chloride, SM4500Cl-B		mg/kg		Analyzed By: HM						
Analyte	Result	Reporting Limit	Analyzed	Method Blank	BS	% Recovery	True Value QC	RPD	Qualifier	
Chloride	32.0	16.0	04/01/2024	ND	432	108	400	3.77		

TPH 8015M		mg/kg		Analyzed By: MS					
Analyte	Result	Reporting Limit	Analyzed	Method Blank	BS	% Recovery	True Value QC	RPD	Qualifier
GRO C6-C10*	<10.0	10.0	03/28/2024	ND	201	101	200	0.116	
DRO >C10-C28*	<10.0	10.0	03/28/2024	ND	216	108	200	3.32	
EXT DRO >C28-C36	<10.0	10.0	03/28/2024	ND					

Surrogate: 1-Chlorooctane 74.6 % 48.2-134

Surrogate: 1-Chlorooctadecane 77.8 % 49.1-148

Cardinal Laboratories

\*=Accredited Analyte

PLEASE NOTE: Liability and Damages. Cardinal's liability and client's exclusive remedy for any claim arising, whether based in contract or tort, shall be limited to the amount paid by client for analyses. All claims, including those for negligence and any other cause whatsoever shall be deemed waived unless made in writing and received by Cardinal within thirty (30) days after completion of the applicable service. In no event shall Cardinal be liable for incidental or consequential damages, including, without limitation, business interruptions, loss of use, or loss of profits incurred by client, its subsidiaries, affiliates or successors arising out of or related to the performance of the services hereunder by Cardinal, regardless of whether such claim is based upon any of the above stated reasons or otherwise. Results relate only to the samples identified above. This report shall not be reproduced except in full with written approval of Cardinal Laboratories.

Celey D. Keene, Lab Director/Quality Manager





PHONE (575) 393-2326 ° 101 E. MARLAND ° HOBBS, NM 88240

**Analytical Results For:**

CARMONA RESOURCES  
 ASHTON THIELKE  
 310 W WALL ST, SUITE 500  
 MIDLAND TX, 79701  
 Fax To:

Received:	03/27/2024	Sampling Date:	03/26/2024
Reported:	04/03/2024	Sampling Type:	Soil
Project Name:	CULEBRA BLUFF SECTION 25 CTB	Sampling Condition:	Cool & Intact
Project Number:	2312	Sample Received By:	Tamara Oldaker
Project Location:	EDDY CO NM		

**Sample ID: T - 3 (3') (H241615-17)**

BTEx 8021B		mg/kg		Analyzed By: JH						
Analyte	Result	Reporting Limit	Analyzed	Method Blank	BS	% Recovery	True Value QC	RPD	Qualifier	
Benzene*	<0.050	0.050	03/29/2024	ND	2.07	104	2.00	5.54		
Toluene*	<0.050	0.050	03/29/2024	ND	2.08	104	2.00	8.46		
Ethylbenzene*	<0.050	0.050	03/29/2024	ND	2.14	107	2.00	9.40		
Total Xylenes*	<0.150	0.150	03/29/2024	ND	6.34	106	6.00	9.31		
Total BTEX	<0.300	0.300	03/29/2024	ND						

Surrogate: 4-Bromofluorobenzene (PID) 108 % 71.5-134

Chloride, SM4500Cl-B		mg/kg		Analyzed By: HM						
Analyte	Result	Reporting Limit	Analyzed	Method Blank	BS	% Recovery	True Value QC	RPD	Qualifier	
Chloride	64.0	16.0	04/01/2024	ND	432	108	400	3.77		

TPH 8015M		mg/kg		Analyzed By: MS					
Analyte	Result	Reporting Limit	Analyzed	Method Blank	BS	% Recovery	True Value QC	RPD	Qualifier
GRO C6-C10*	<10.0	10.0	03/28/2024	ND	201	101	200	0.116	
DRO >C10-C28*	<10.0	10.0	03/28/2024	ND	216	108	200	3.32	
EXT DRO >C28-C36	<10.0	10.0	03/28/2024	ND					

Surrogate: 1-Chlorooctane 89.6 % 48.2-134

Surrogate: 1-Chlorooctadecane 93.9 % 49.1-148

Cardinal Laboratories

\*=Accredited Analyte

PLEASE NOTE: Liability and Damages. Cardinal's liability and client's exclusive remedy for any claim arising, whether based in contract or tort, shall be limited to the amount paid by client for analyses. All claims, including those for negligence and any other cause whatsoever shall be deemed waived unless made in writing and received by Cardinal within thirty (30) days after completion of the applicable service. In no event shall Cardinal be liable for incidental or consequential damages, including, without limitation, business interruptions, loss of use, or loss of profits incurred by client, its subsidiaries, affiliates or successors arising out of or related to the performance of the services hereunder by Cardinal, regardless of whether such claim is based upon any of the above stated reasons or otherwise. Results relate only to the samples identified above. This report shall not be reproduced except in full with written approval of Cardinal Laboratories.

Celey D. Keene, Lab Director/Quality Manager



PHONE (575) 393-2326 ° 101 E. MARLAND ° HOBBS, NM 88240

**Analytical Results For:**

CARMONA RESOURCES  
 ASHTON THIELKE  
 310 W WALL ST, SUITE 500  
 MIDLAND TX, 79701  
 Fax To:

Received:	03/27/2024	Sampling Date:	03/26/2024
Reported:	04/03/2024	Sampling Type:	Soil
Project Name:	CULEBRA BLUFF SECTION 25 CTB	Sampling Condition:	Cool & Intact
Project Number:	2312	Sample Received By:	Tamara Oldaker
Project Location:	EDDY CO NM		

**Sample ID: T - 3 (4') (H241615-18)**

BTEx 8021B		mg/kg		Analyzed By: JH						
Analyte	Result	Reporting Limit	Analyzed	Method Blank	BS	% Recovery	True Value QC	RPD	Qualifier	
Benzene*	<0.050	0.050	03/29/2024	ND	2.07	104	2.00	5.54		
Toluene*	<0.050	0.050	03/29/2024	ND	2.08	104	2.00	8.46		
Ethylbenzene*	<0.050	0.050	03/29/2024	ND	2.14	107	2.00	9.40		
Total Xylenes*	<0.150	0.150	03/29/2024	ND	6.34	106	6.00	9.31		
Total BTEX	<0.300	0.300	03/29/2024	ND						

Surrogate: 4-Bromofluorobenzene (PID) 109 % 71.5-134

Chloride, SM4500Cl-B		mg/kg		Analyzed By: HM						
Analyte	Result	Reporting Limit	Analyzed	Method Blank	BS	% Recovery	True Value QC	RPD	Qualifier	
Chloride	368	16.0	04/01/2024	ND	432	108	400	3.77		

TPH 8015M		mg/kg		Analyzed By: MS					
Analyte	Result	Reporting Limit	Analyzed	Method Blank	BS	% Recovery	True Value QC	RPD	Qualifier
GRO C6-C10*	<10.0	10.0	03/28/2024	ND	201	101	200	0.116	
DRO >C10-C28*	14.2	10.0	03/28/2024	ND	216	108	200	3.32	
EXT DRO >C28-C36	<10.0	10.0	03/28/2024	ND					

Surrogate: 1-Chlorooctane 89.9 % 48.2-134

Surrogate: 1-Chlorooctadecane 94.2 % 49.1-148

Cardinal Laboratories

\*=Accredited Analyte

PLEASE NOTE: Liability and Damages. Cardinal's liability and client's exclusive remedy for any claim arising, whether based in contract or tort, shall be limited to the amount paid by client for analyses. All claims, including those for negligence and any other cause whatsoever shall be deemed waived unless made in writing and received by Cardinal within thirty (30) days after completion of the applicable service. In no event shall Cardinal be liable for incidental or consequential damages, including, without limitation, business interruptions, loss of use, or loss of profits incurred by client, its subsidiaries, affiliates or successors arising out of or related to the performance of the services hereunder by Cardinal, regardless of whether such claim is based upon any of the above stated reasons or otherwise. Results relate only to the samples identified above. This report shall not be reproduced except in full with written approval of Cardinal Laboratories.

Celey D. Keene, Lab Director/Quality Manager



PHONE (575) 393-2326 ° 101 E. MARLAND ° HOBBS, NM 88240

Notes and Definitions

- ND Analyte NOT DETECTED at or above the reporting limit
- RPD Relative Percent Difference
- \*\* Samples not received at proper temperature of 6°C or below.
- \*\*\* Insufficient time to reach temperature.
- Chloride by SM4500Cl-B does not require samples be received at or below 6°C  
Samples reported on an as received basis (wet) unless otherwise noted on report

Cardinal Laboratories \*=Accredited Analyte

PLEASE NOTE: Liability and Damages. Cardinal's liability and client's exclusive remedy for any claim arising, whether based in contract or tort, shall be limited to the amount paid by client for analyses. All claims, including those for negligence and any other cause whatsoever shall be deemed waived unless made in writing and received by Cardinal within thirty (30) days after completion of the applicable service. In no event shall Cardinal be liable for incidental or consequential damages, including, without limitation, business interruptions, loss of use, or loss of profits incurred by client, its subsidiaries, affiliates or successors arising out of or related to the performance of the services hereunder by Cardinal, regardless of whether such claim is based upon any of the above stated reasons or otherwise. Results relate only to the samples identified above. This report shall not be reproduced except in full with written approval of Cardinal Laboratories.

A handwritten signature in black ink, appearing to read "C. D. Keene".

Celey D. Keene, Lab Director/Quality Manager

## Chain of Custody

**Work Order No:**

A 24/1615

Page 1 of 2

Page 16 of 17

[illegible]



Chain of Custody

Work Order No: A041615

Page 2 of 2

Project Manager:	Ashton Thielke	Bill to: (if different)	Carmona Resources
Company Name:	Carmona Resources	Company Name:	
Address:	310 West Wall Ste. 500	Address:	
City, State ZIP:	Midland, TX 79701	City, State ZIP:	
Phone:	432-813-8988	Email:	ThielkeA@Carmonaresources.com

Work Order Comments	
Program: UST/PST <input type="checkbox"/> PRP <input type="checkbox"/> Brownfields <input type="checkbox"/> RRC <input type="checkbox"/> Superfund <input type="checkbox"/>	
State of Project:	
Reporting Level II <input type="checkbox"/> Level III <input type="checkbox"/> PST/UST <input type="checkbox"/> RRP <input type="checkbox"/> Level IV <input type="checkbox"/>	
Deliverables: EDD <input type="checkbox"/> ADAPT <input type="checkbox"/> Other:	

Project Name:	Culebra Bluff Section 25 CTB	Turn Around	<input checked="" type="checkbox"/> Routine <input type="checkbox"/> Rush	Pres. Code	ANALYSIS REQUEST										Preservative Codes			
Project Number:	2312	Due Date:	Normal												None: NO	DI Water: H <sub>2</sub> O		
Project Location	Eddy Co. NM	TAT starts the day received by the lab, if received by 4:30pm													Cool: Cool	MeOH: Me		
Sampler's Name:	MM														HCL: HC	HNO <sub>3</sub> : HN		
PO #:															H <sub>2</sub> SO <sub>4</sub> : H <sub>2</sub>	NaOH: Na		
SAMPLE RECEIPT	Temp Blank:	Yes <input checked="" type="checkbox"/> No <input type="checkbox"/>	Wet Ice:	Yes <input checked="" type="checkbox"/> No <input type="checkbox"/>											H <sub>3</sub> PO <sub>4</sub> : HP			
Received Intact:	Yes <input checked="" type="checkbox"/> No <input type="checkbox"/>	Thermometer ID:													NaHSO <sub>4</sub> : NABIS			
Cooler Custody Seals:	Yes <input type="checkbox"/> No <input checked="" type="checkbox"/> N/A	Correction Factor:													Na <sub>2</sub> S <sub>2</sub> O <sub>3</sub> : NaSO <sub>3</sub>			
Sample Custody Seals:	Yes <input type="checkbox"/> No <input checked="" type="checkbox"/> N/A	Temperature Reading:													Zn Acetate+NaOH: Zn			
Total Containers:		Corrected Temperature:													NaOH+Ascorbic Acid: SAPC			
Sample Identification	Date	Time	Soil	Water	Grab/Comp	# of Cont											Sample Comments	
T-2 (7')	3/26/2024		X		G	1											X	
T-2 (8')	3/26/2024		X		G	1											X	
T-2 (9')	3/26/2024		X		G	1											X	
T-2 (10')	3/26/2024		X		G	1											X	
T-3 (0-1')	3/26/2024		X		G	1											X	
T-3 (2')	3/26/2024		X		G	1											X	
T-3 (3')	3/26/2024		X		G	1											X	
T-3 (4')	3/26/2024		X		G	1											X	

Please send results to cmoehring@carmonaresources.com and mcarmona@carmonaresources.com

Relinquished by: (Signature)	Received by: (Signature)	Date/Time	Relinquished by: (Signature)	Received by: (Signature)	Date/Time
		3-27-24 1610			



PHONE (575) 393-2326 ° 101 E. MARLAND ° HOBBS, NM 88240

April 11, 2024

ASHTON THIELKE

CARMONA RESOURCES

310 W WALL ST, SUITE 500

MIDLAND, TX 79701

RE: CULEBRA BLUFF SECTION 25 CTB

Enclosed are the results of analyses for samples received by the laboratory on 04/10/24 16:00.

Cardinal Laboratories is accredited through Texas NELAP under certificate number T104704398-23-16. Accreditation applies to drinking water, non-potable water and solid and chemical materials. All accredited analytes are denoted by an asterisk (\*). For a complete list of accredited analytes and matrices visit the TCEQ website at [www.tceq.texas.gov/field/qa/lab\\_accred\\_certif.html](http://www.tceq.texas.gov/field/qa/lab_accred_certif.html).

Cardinal Laboratories is accredited through the State of Colorado Department of Public Health and Environment for:

Method EPA 552.2	Haloacetic Acids (HAA-5)
Method EPA 524.2	Total Trihalomethanes (TTHM)
Method EPA 524.4	Regulated VOCs (V1, V2, V3)

Accreditation applies to public drinking water matrices.

This report meets NELAP requirements and is made up of a cover page, analytical results, and a copy of the original chain-of-custody. If you have any questions concerning this report, please feel free to contact me.

Sincerely,

A handwritten signature in black ink that reads "Celey D. Keene". The signature is written in a cursive, flowing style.

Celey D. Keene

Lab Director/Quality Manager



PHONE (575) 393-2326 ° 101 E. MARLAND ° HOBBS, NM 88240

**Analytical Results For:**

CARMONA RESOURCES  
 ASHTON THIELKE  
 310 W WALL ST, SUITE 500  
 MIDLAND TX, 79701  
 Fax To:

Received:	04/10/2024	Sampling Date:	04/10/2024
Reported:	04/11/2024	Sampling Type:	Soil
Project Name:	CULEBRA BLUFF SECTION 25 CTB	Sampling Condition:	Cool & Intact
Project Number:	2312	Sample Received By:	Shalyn Rodriguez
Project Location:	EDDY CO NM		

**Sample ID: CS - 1 (1.5') (H241870-01)**

BTX 8021B		mg/kg		Analyzed By: JH					
Analyte	Result	Reporting Limit	Analyzed	Method Blank	BS	% Recovery	True Value QC	RPD	Qualifier
Benzene*	<0.050	0.050	04/10/2024	ND	2.17	109	2.00	1.19	
Toluene*	<0.050	0.050	04/10/2024	ND	2.11	105	2.00	1.50	
Ethylbenzene*	<0.050	0.050	04/10/2024	ND	2.03	102	2.00	2.07	
Total Xylenes*	<0.150	0.150	04/10/2024	ND	5.94	99.0	6.00	2.44	
Total BTX	<0.300	0.300	04/10/2024	ND					

Surrogate: 4-Bromofluorobenzene (PID) 89.5 % 71.5-134

Chloride, SM4500Cl-B		mg/kg		Analyzed By: AC					
Analyte	Result	Reporting Limit	Analyzed	Method Blank	BS	% Recovery	True Value QC	RPD	Qualifier
Chloride	208	16.0	04/11/2024	ND	416	104	400	7.41	

TPH 8015M		mg/kg		Analyzed By: MS					
Analyte	Result	Reporting Limit	Analyzed	Method Blank	BS	% Recovery	True Value QC	RPD	Qualifier
GRO C6-C10*	<10.0	10.0	04/11/2024	ND	211	105	200	0.904	
DRO >C10-C28*	<10.0	10.0	04/11/2024	ND	204	102	200	5.06	
EXT DRO >C28-C36	<10.0	10.0	04/11/2024	ND					

Surrogate: 1-Chlorooctane 84.3 % 48.2-134

Surrogate: 1-Chlorooctadecane 78.2 % 49.1-148

Cardinal Laboratories

\*=Accredited Analyte

PLEASE NOTE: Liability and Damages. Cardinal's liability and client's exclusive remedy for any claim arising, whether based in contract or tort, shall be limited to the amount paid by client for analyses. All claims, including those for negligence and any other cause whatsoever shall be deemed waived unless made in writing and received by Cardinal within thirty (30) days after completion of the applicable service. In no event shall Cardinal be liable for incidental or consequential damages, including, without limitation, business interruptions, loss of use, or loss of profits incurred by client, its subsidiaries, affiliates or successors arising out of or related to the performance of the services hereunder by Cardinal, regardless of whether such claim is based upon any of the above stated reasons or otherwise. Results relate only to the samples identified above. This report shall not be reproduced except in full with written approval of Cardinal Laboratories.

Celey D. Keene, Lab Director/Quality Manager



PHONE (575) 393-2326 ° 101 E. MARLAND ° HOBBS, NM 88240

**Analytical Results For:**

CARMONA RESOURCES  
 ASHTON THIELKE  
 310 W WALL ST, SUITE 500  
 MIDLAND TX, 79701  
 Fax To:

Received: 04/10/2024  
 Reported: 04/11/2024  
 Project Name: CULEBRA BLUFF SECTION 25 CTB  
 Project Number: 2312  
 Project Location: EDDY CO NM

Sampling Date: 04/10/2024  
 Sampling Type: Soil  
 Sampling Condition: Cool & Intact  
 Sample Received By: Shalyn Rodriguez

**Sample ID: CS - 2 (1.5') (H241870-02)**

BTEx 8021B		mg/kg		Analyzed By: JH					
Analyte	Result	Reporting Limit	Analyzed	Method Blank	BS	% Recovery	True Value QC	RPD	Qualifier
Benzene*	<0.050	0.050	04/10/2024	ND	2.17	109	2.00	1.19	
Toluene*	<0.050	0.050	04/10/2024	ND	2.11	105	2.00	1.50	
Ethylbenzene*	<0.050	0.050	04/10/2024	ND	2.03	102	2.00	2.07	
Total Xylenes*	<0.150	0.150	04/10/2024	ND	5.94	99.0	6.00	2.44	
Total BTEX	<0.300	0.300	04/10/2024	ND					

Surrogate: 4-Bromofluorobenzene (PID) 90.6 % 71.5-134

Chloride, SM4500Cl-B		mg/kg		Analyzed By: AC					
Analyte	Result	Reporting Limit	Analyzed	Method Blank	BS	% Recovery	True Value QC	RPD	Qualifier
Chloride	176	16.0	04/11/2024	ND	416	104	400	7.41	

TPH 8015M		mg/kg		Analyzed By: MS					
Analyte	Result	Reporting Limit	Analyzed	Method Blank	BS	% Recovery	True Value QC	RPD	Qualifier
GRO C6-C10*	<10.0	10.0	04/11/2024	ND	211	105	200	0.904	
DRO >C10-C28*	<10.0	10.0	04/11/2024	ND	204	102	200	5.06	
EXT DRO >C28-C36	<10.0	10.0	04/11/2024	ND					

Surrogate: 1-Chlorooctane 74.5 % 48.2-134

Surrogate: 1-Chlorooctadecane 70.7 % 49.1-148

Cardinal Laboratories

\*=Accredited Analyte

PLEASE NOTE: Liability and Damages. Cardinal's liability and client's exclusive remedy for any claim arising, whether based in contract or tort, shall be limited to the amount paid by client for analyses. All claims, including those for negligence and any other cause whatsoever shall be deemed waived unless made in writing and received by Cardinal within thirty (30) days after completion of the applicable service. In no event shall Cardinal be liable for incidental or consequential damages, including, without limitation, business interruptions, loss of use, or loss of profits incurred by client, its subsidiaries, affiliates or successors arising out of or related to the performance of the services hereunder by Cardinal, regardless of whether such claim is based upon any of the above stated reasons or otherwise. Results relate only to the samples identified above. This report shall not be reproduced except in full with written approval of Cardinal Laboratories.

Celey D. Keene, Lab Director/Quality Manager





PHONE (575) 393-2326 ° 101 E. MARLAND ° HOBBS, NM 88240

**Analytical Results For:**

CARMONA RESOURCES  
 ASHTON THIELKE  
 310 W WALL ST, SUITE 500  
 MIDLAND TX, 79701  
 Fax To:

Received: 04/10/2024  
 Reported: 04/11/2024  
 Project Name: CULEBRA BLUFF SECTION 25 CTB  
 Project Number: 2312  
 Project Location: EDDY CO NM

Sampling Date: 04/10/2024  
 Sampling Type: Soil  
 Sampling Condition: Cool & Intact  
 Sample Received By: Shalyn Rodriguez

**Sample ID: CS - 3 (1.5') (H241870-03)**

BTEx 8021B		mg/kg		Analyzed By: JH					
Analyte	Result	Reporting Limit	Analyzed	Method Blank	BS	% Recovery	True Value QC	RPD	Qualifier
Benzene*	<0.050	0.050	04/10/2024	ND	2.17	109	2.00	1.19	
Toluene*	<0.050	0.050	04/10/2024	ND	2.11	105	2.00	1.50	
Ethylbenzene*	<0.050	0.050	04/10/2024	ND	2.03	102	2.00	2.07	
Total Xylenes*	<0.150	0.150	04/10/2024	ND	5.94	99.0	6.00	2.44	
Total BTEX	<0.300	0.300	04/10/2024	ND					

Surrogate: 4-Bromofluorobenzene (PID) 90.3 % 71.5-134

Chloride, SM4500Cl-B		mg/kg		Analyzed By: AC					
Analyte	Result	Reporting Limit	Analyzed	Method Blank	BS	% Recovery	True Value QC	RPD	Qualifier
Chloride	128	16.0	04/11/2024	ND	416	104	400	7.41	

TPH 8015M		mg/kg		Analyzed By: MS					
Analyte	Result	Reporting Limit	Analyzed	Method Blank	BS	% Recovery	True Value QC	RPD	Qualifier
GRO C6-C10*	<10.0	10.0	04/10/2024	ND	218	109	200	3.11	
DRO >C10-C28*	<10.0	10.0	04/10/2024	ND	201	101	200	2.19	
EXT DRO >C28-C36	<10.0	10.0	04/10/2024	ND					

Surrogate: 1-Chlorooctane 86.8 % 48.2-134

Surrogate: 1-Chlorooctadecane 93.0 % 49.1-148

Cardinal Laboratories

\*=Accredited Analyte

PLEASE NOTE: Liability and Damages. Cardinal's liability and client's exclusive remedy for any claim arising, whether based in contract or tort, shall be limited to the amount paid by client for analyses. All claims, including those for negligence and any other cause whatsoever shall be deemed waived unless made in writing and received by Cardinal within thirty (30) days after completion of the applicable service. In no event shall Cardinal be liable for incidental or consequential damages, including, without limitation, business interruptions, loss of use, or loss of profits incurred by client, its subsidiaries, affiliates or successors arising out of or related to the performance of the services hereunder by Cardinal, regardless of whether such claim is based upon any of the above stated reasons or otherwise. Results relate only to the samples identified above. This report shall not be reproduced except in full with written approval of Cardinal Laboratories.

Celey D. Keene, Lab Director/Quality Manager



PHONE (575) 393-2326 ° 101 E. MARLAND ° HOBBS, NM 88240

**Analytical Results For:**

CARMONA RESOURCES  
 ASHTON THIELKE  
 310 W WALL ST, SUITE 500  
 MIDLAND TX, 79701  
 Fax To:

Received: 04/10/2024  
 Reported: 04/11/2024  
 Project Name: CULEBRA BLUFF SECTION 25 CTB  
 Project Number: 2312  
 Project Location: EDDY CO NM

Sampling Date: 04/10/2024  
 Sampling Type: Soil  
 Sampling Condition: Cool & Intact  
 Sample Received By: Shalyn Rodriguez

**Sample ID: CS - 4 (1.5') (H241870-04)**

BTEx 8021B			mg/kg		Analyzed By: JH				
Analyte	Result	Reporting Limit	Analyzed	Method Blank	BS	% Recovery	True Value QC	RPD	Qualifier
Benzene*	<0.050	0.050	04/10/2024	ND	2.14	107	2.00	0.259	
Toluene*	<0.050	0.050	04/10/2024	ND	2.14	107	2.00	0.0300	
Ethylbenzene*	<0.050	0.050	04/10/2024	ND	2.08	104	2.00	0.00312	
Total Xylenes*	<0.150	0.150	04/10/2024	ND	6.31	105	6.00	0.398	
Total BTEX	<0.300	0.300	04/10/2024	ND					

Surrogate: 4-Bromofluorobenzene (PID) 104 % 71.5-134

Chloride, SM4500Cl-B		mg/kg		Analyzed By: AC					
Analyte	Result	Reporting Limit	Analyzed	Method Blank	BS	% Recovery	True Value QC	RPD	Qualifier
Chloride	240	16.0	04/11/2024	ND	416	104	400	7.41	

TPH 8015M		mg/kg		Analyzed By: MS					
Analyte	Result	Reporting Limit	Analyzed	Method Blank	BS	% Recovery	True Value QC	RPD	Qualifier
GRO C6-C10*	<10.0	10.0	04/10/2024	ND	218	109	200	3.11	
DRO >C10-C28*	<10.0	10.0	04/10/2024	ND	201	101	200	2.19	
EXT DRO >C28-C36	<10.0	10.0	04/10/2024	ND					

Surrogate: 1-Chlorooctane 81.5 % 48.2-134

Surrogate: 1-Chlorooctadecane 86.5 % 49.1-148

Cardinal Laboratories

\*=Accredited Analyte

PLEASE NOTE: Liability and Damages. Cardinal's liability and client's exclusive remedy for any claim arising, whether based in contract or tort, shall be limited to the amount paid by client for analyses. All claims, including those for negligence and any other cause whatsoever shall be deemed waived unless made in writing and received by Cardinal within thirty (30) days after completion of the applicable service. In no event shall Cardinal be liable for incidental or consequential damages, including, without limitation, business interruptions, loss of use, or loss of profits incurred by client, its subsidiaries, affiliates or successors arising out of or related to the performance of the services hereunder by Cardinal, regardless of whether such claim is based upon any of the above stated reasons or otherwise. Results relate only to the samples identified above. This report shall not be reproduced except in full with written approval of Cardinal Laboratories.

Celey D. Keene, Lab Director/Quality Manager



PHONE (575) 393-2326 ° 101 E. MARLAND ° HOBBS, NM 88240

**Analytical Results For:**

CARMONA RESOURCES  
 ASHTON THIELKE  
 310 W WALL ST, SUITE 500  
 MIDLAND TX, 79701  
 Fax To:

Received: 04/10/2024  
 Reported: 04/11/2024  
 Project Name: CULEBRA BLUFF SECTION 25 CTB  
 Project Number: 2312  
 Project Location: EDDY CO NM

Sampling Date: 04/10/2024  
 Sampling Type: Soil  
 Sampling Condition: Cool & Intact  
 Sample Received By: Shalyn Rodriguez

**Sample ID: SW - 1 (1.5') (H241870-05)**

BTEX 8021B		mg/kg		Analyzed By: JH						
Analyte	Result	Reporting Limit	Analyzed	Method Blank	BS	% Recovery	True Value QC	RPD	Qualifier	
Benzene*	<0.050	0.050	04/10/2024	ND	2.14	107	2.00	0.259		
Toluene*	<0.050	0.050	04/10/2024	ND	2.14	107	2.00	0.0300		
Ethylbenzene*	<0.050	0.050	04/10/2024	ND	2.08	104	2.00	0.00312		
Total Xylenes*	<0.150	0.150	04/10/2024	ND	6.31	105	6.00	0.398		
Total BTEX	<0.300	0.300	04/10/2024	ND						

Surrogate: 4-Bromofluorobenzene (PID) 103 % 71.5-134

Chloride, SM4500Cl-B		mg/kg		Analyzed By: AC					
Analyte	Result	Reporting Limit	Analyzed	Method Blank	BS	% Recovery	True Value QC	RPD	Qualifier
Chloride	128	16.0	04/11/2024	ND	416	104	400	7.41	

TPH 8015M		mg/kg		Analyzed By: MS					
Analyte	Result	Reporting Limit	Analyzed	Method Blank	BS	% Recovery	True Value QC	RPD	Qualifier
GRO C6-C10*	<10.0	10.0	04/10/2024	ND	218	109	200	3.11	
DRO >C10-C28*	<10.0	10.0	04/10/2024	ND	201	101	200	2.19	
EXT DRO >C28-C36	<10.0	10.0	04/10/2024	ND					

Surrogate: 1-Chlorooctane 83.2 % 48.2-134

Surrogate: 1-Chlorooctadecane 86.8 % 49.1-148

Cardinal Laboratories

\*=Accredited Analyte

PLEASE NOTE: Liability and Damages. Cardinal's liability and client's exclusive remedy for any claim arising, whether based in contract or tort, shall be limited to the amount paid by client for analyses. All claims, including those for negligence and any other cause whatsoever shall be deemed waived unless made in writing and received by Cardinal within thirty (30) days after completion of the applicable service. In no event shall Cardinal be liable for incidental or consequential damages, including, without limitation, business interruptions, loss of use, or loss of profits incurred by client, its subsidiaries, affiliates or successors arising out of or related to the performance of the services hereunder by Cardinal, regardless of whether such claim is based upon any of the above stated reasons or otherwise. Results relate only to the samples identified above. This report shall not be reproduced except in full with written approval of Cardinal Laboratories.

Celey D. Keene, Lab Director/Quality Manager



PHONE (575) 393-2326 ° 101 E. MARLAND ° HOBBS, NM 88240

**Analytical Results For:**

CARMONA RESOURCES  
 ASHTON THIELKE  
 310 W WALL ST, SUITE 500  
 MIDLAND TX, 79701  
 Fax To:

Received: 04/10/2024  
 Reported: 04/11/2024  
 Project Name: CULEBRA BLUFF SECTION 25 CTB  
 Project Number: 2312  
 Project Location: EDDY CO NM

Sampling Date: 04/10/2024  
 Sampling Type: Soil  
 Sampling Condition: Cool & Intact  
 Sample Received By: Shalyn Rodriguez

**Sample ID: SW - 2 (1.5') (H241870-06)**

BTEx 8021B		mg/kg		Analyzed By: JH					
Analyte	Result	Reporting Limit	Analyzed	Method Blank	BS	% Recovery	True Value QC	RPD	Qualifier
Benzene*	<0.050	0.050	04/10/2024	ND	2.14	107	2.00	0.259	
Toluene*	<0.050	0.050	04/10/2024	ND	2.14	107	2.00	0.0300	
Ethylbenzene*	<0.050	0.050	04/10/2024	ND	2.08	104	2.00	0.00312	
Total Xylenes*	<0.150	0.150	04/10/2024	ND	6.31	105	6.00	0.398	
Total BTEX	<0.300	0.300	04/10/2024	ND					

Surrogate: 4-Bromofluorobenzene (PID) 103 % 71.5-134

Chloride, SM4500Cl-B		mg/kg		Analyzed By: AC					
Analyte	Result	Reporting Limit	Analyzed	Method Blank	BS	% Recovery	True Value QC	RPD	Qualifier
Chloride	144	16.0	04/11/2024	ND	416	104	400	7.41	

TPH 8015M		mg/kg		Analyzed By: MS					
Analyte	Result	Reporting Limit	Analyzed	Method Blank	BS	% Recovery	True Value QC	RPD	Qualifier
GRO C6-C10*	<10.0	10.0	04/10/2024	ND	218	109	200	3.11	
DRO >C10-C28*	<10.0	10.0	04/10/2024	ND	201	101	200	2.19	
EXT DRO >C28-C36	<10.0	10.0	04/10/2024	ND					

Surrogate: 1-Chlorooctane 87.1 % 48.2-134

Surrogate: 1-Chlorooctadecane 91.1 % 49.1-148

Cardinal Laboratories

\*=Accredited Analyte

PLEASE NOTE: Liability and Damages. Cardinal's liability and client's exclusive remedy for any claim arising, whether based in contract or tort, shall be limited to the amount paid by client for analyses. All claims, including those for negligence and any other cause whatsoever shall be deemed waived unless made in writing and received by Cardinal within thirty (30) days after completion of the applicable service. In no event shall Cardinal be liable for incidental or consequential damages, including, without limitation, business interruptions, loss of use, or loss of profits incurred by client, its subsidiaries, affiliates or successors arising out of or related to the performance of the services hereunder by Cardinal, regardless of whether such claim is based upon any of the above stated reasons or otherwise. Results relate only to the samples identified above. This report shall not be reproduced except in full with written approval of Cardinal Laboratories.

Celey D. Keene, Lab Director/Quality Manager





PHONE (575) 393-2326 ° 101 E. MARLAND ° HOBBS, NM 88240

**Analytical Results For:**

CARMONA RESOURCES  
 ASHTON THIELKE  
 310 W WALL ST, SUITE 500  
 MIDLAND TX, 79701  
 Fax To:

Received: 04/10/2024  
 Reported: 04/11/2024  
 Project Name: CULEBRA BLUFF SECTION 25 CTB  
 Project Number: 2312  
 Project Location: EDDY CO NM

Sampling Date: 04/10/2024  
 Sampling Type: Soil  
 Sampling Condition: Cool & Intact  
 Sample Received By: Shalyn Rodriguez

**Sample ID: SW - 3 (1.5') (H241870-07)**

BTEx 8021B			mg/kg		Analyzed By: JH				
Analyte	Result	Reporting Limit	Analyzed	Method Blank	BS	% Recovery	True Value QC	RPD	Qualifier
Benzene*	<0.050	0.050	04/10/2024	ND	2.14	107	2.00	0.259	
Toluene*	<0.050	0.050	04/10/2024	ND	2.14	107	2.00	0.0300	
Ethylbenzene*	<0.050	0.050	04/10/2024	ND	2.08	104	2.00	0.00312	
Total Xylenes*	<0.150	0.150	04/10/2024	ND	6.31	105	6.00	0.398	
Total BTEX	<0.300	0.300	04/10/2024	ND					

Surrogate: 4-Bromofluorobenzene (PID) 104 % 71.5-134

Chloride, SM4500Cl-B		mg/kg		Analyzed By: AC					
Analyte	Result	Reporting Limit	Analyzed	Method Blank	BS	% Recovery	True Value QC	RPD	Qualifier
Chloride	224	16.0	04/11/2024	ND	416	104	400	7.41	

TPH 8015M		mg/kg		Analyzed By: MS					
Analyte	Result	Reporting Limit	Analyzed	Method Blank	BS	% Recovery	True Value QC	RPD	Qualifier
GRO C6-C10*	<10.0	10.0	04/10/2024	ND	218	109	200	3.11	
DRO >C10-C28*	36.0	10.0	04/10/2024	ND	201	101	200	2.19	
EXT DRO >C28-C36	<10.0	10.0	04/10/2024	ND					

Surrogate: 1-Chlorooctane 84.8 % 48.2-134

Surrogate: 1-Chlorooctadecane 89.3 % 49.1-148

Cardinal Laboratories

\*=Accredited Analyte

PLEASE NOTE: Liability and Damages. Cardinal's liability and client's exclusive remedy for any claim arising, whether based in contract or tort, shall be limited to the amount paid by client for analyses. All claims, including those for negligence and any other cause whatsoever shall be deemed waived unless made in writing and received by Cardinal within thirty (30) days after completion of the applicable service. In no event shall Cardinal be liable for incidental or consequential damages, including, without limitation, business interruptions, loss of use, or loss of profits incurred by client, its subsidiaries, affiliates or successors arising out of or related to the performance of the services hereunder by Cardinal, regardless of whether such claim is based upon any of the above stated reasons or otherwise. Results relate only to the samples identified above. This report shall not be reproduced except in full with written approval of Cardinal Laboratories.

Celey D. Keene, Lab Director/Quality Manager



PHONE (575) 393-2326 ° 101 E. MARLAND ° HOBBS, NM 88240

**Analytical Results For:**

CARMONA RESOURCES  
 ASHTON THIELKE  
 310 W WALL ST, SUITE 500  
 MIDLAND TX, 79701  
 Fax To:

Received: 04/10/2024  
 Reported: 04/11/2024  
 Project Name: CULEBRA BLUFF SECTION 25 CTB  
 Project Number: 2312  
 Project Location: EDDY CO NM

Sampling Date: 04/10/2024  
 Sampling Type: Soil  
 Sampling Condition: Cool & Intact  
 Sample Received By: Shalyn Rodriguez

**Sample ID: SW - 4 (1.5') (H241870-08)**

BTEx 8021B		mg/kg		Analyzed By: JH					
Analyte	Result	Reporting Limit	Analyzed	Method Blank	BS	% Recovery	True Value QC	RPD	Qualifier
Benzene*	<0.050	0.050	04/10/2024	ND	2.14	107	2.00	0.259	
Toluene*	<0.050	0.050	04/10/2024	ND	2.14	107	2.00	0.0300	
Ethylbenzene*	<0.050	0.050	04/10/2024	ND	2.08	104	2.00	0.00312	
Total Xylenes*	<0.150	0.150	04/10/2024	ND	6.31	105	6.00	0.398	
Total BTEX	<0.300	0.300	04/10/2024	ND					

Surrogate: 4-Bromofluorobenzene (PID) 104 % 71.5-134

Chloride, SM4500Cl-B		mg/kg		Analyzed By: AC					
Analyte	Result	Reporting Limit	Analyzed	Method Blank	BS	% Recovery	True Value QC	RPD	Qualifier
Chloride	256	16.0	04/11/2024	ND	416	104	400	7.41	

TPH 8015M		mg/kg		Analyzed By: MS					
Analyte	Result	Reporting Limit	Analyzed	Method Blank	BS	% Recovery	True Value QC	RPD	Qualifier
GRO C6-C10*	<10.0	10.0	04/10/2024	ND	218	109	200	3.11	
DRO >C10-C28*	<10.0	10.0	04/10/2024	ND	201	101	200	2.19	
EXT DRO >C28-C36	<10.0	10.0	04/10/2024	ND					

Surrogate: 1-Chlorooctane 85.2 % 48.2-134

Surrogate: 1-Chlorooctadecane 90.5 % 49.1-148

Cardinal Laboratories

\*=Accredited Analyte

PLEASE NOTE: Liability and Damages. Cardinal's liability and client's exclusive remedy for any claim arising, whether based in contract or tort, shall be limited to the amount paid by client for analyses. All claims, including those for negligence and any other cause whatsoever shall be deemed waived unless made in writing and received by Cardinal within thirty (30) days after completion of the applicable service. In no event shall Cardinal be liable for incidental or consequential damages, including, without limitation, business interruptions, loss of use, or loss of profits incurred by client, its subsidiaries, affiliates or successors arising out of or related to the performance of the services hereunder by Cardinal, regardless of whether such claim is based upon any of the above stated reasons or otherwise. Results relate only to the samples identified above. This report shall not be reproduced except in full with written approval of Cardinal Laboratories.

Celey D. Keene, Lab Director/Quality Manager



PHONE (575) 393-2326 ° 101 E. MARLAND ° HOBBS, NM 88240

**Analytical Results For:**

CARMONA RESOURCES  
 ASHTON THIELKE  
 310 W WALL ST, SUITE 500  
 MIDLAND TX, 79701  
 Fax To:

Received: 04/10/2024  
 Reported: 04/11/2024  
 Project Name: CULEBRA BLUFF SECTION 25 CTB  
 Project Number: 2312  
 Project Location: EDDY CO NM

Sampling Date: 04/10/2024  
 Sampling Type: Soil  
 Sampling Condition: Cool & Intact  
 Sample Received By: Shalyn Rodriguez

**Sample ID: SW - 5 (1.5') (H241870-09)**

BTEx 8021B		mg/kg		Analyzed By: JH					
Analyte	Result	Reporting Limit	Analyzed	Method Blank	BS	% Recovery	True Value QC	RPD	Qualifier
Benzene*	<0.050	0.050	04/10/2024	ND	2.14	107	2.00	0.259	
Toluene*	<0.050	0.050	04/10/2024	ND	2.14	107	2.00	0.0300	
Ethylbenzene*	<0.050	0.050	04/10/2024	ND	2.08	104	2.00	0.00312	
Total Xylenes*	<0.150	0.150	04/10/2024	ND	6.31	105	6.00	0.398	
Total BTEX	<0.300	0.300	04/10/2024	ND					

Surrogate: 4-Bromofluorobenzene (PID) 105 % 71.5-134

Chloride, SM4500Cl-B		mg/kg		Analyzed By: AC					
Analyte	Result	Reporting Limit	Analyzed	Method Blank	BS	% Recovery	True Value QC	RPD	Qualifier
Chloride	288	16.0	04/11/2024	ND	416	104	400	7.41	

TPH 8015M		mg/kg		Analyzed By: MS					
Analyte	Result	Reporting Limit	Analyzed	Method Blank	BS	% Recovery	True Value QC	RPD	Qualifier
GRO C6-C10*	<10.0	10.0	04/10/2024	ND	218	109	200	3.11	
DRO >C10-C28*	58.7	10.0	04/10/2024	ND	201	101	200	2.19	
EXT DRO >C28-C36	<10.0	10.0	04/10/2024	ND					

Surrogate: 1-Chlorooctane 93.0 % 48.2-134

Surrogate: 1-Chlorooctadecane 97.3 % 49.1-148

Cardinal Laboratories

\*=Accredited Analyte

PLEASE NOTE: Liability and Damages. Cardinal's liability and client's exclusive remedy for any claim arising, whether based in contract or tort, shall be limited to the amount paid by client for analyses. All claims, including those for negligence and any other cause whatsoever shall be deemed waived unless made in writing and received by Cardinal within thirty (30) days after completion of the applicable service. In no event shall Cardinal be liable for incidental or consequential damages, including, without limitation, business interruptions, loss of use, or loss of profits incurred by client, its subsidiaries, affiliates or successors arising out of or related to the performance of the services hereunder by Cardinal, regardless of whether such claim is based upon any of the above stated reasons or otherwise. Results relate only to the samples identified above. This report shall not be reproduced except in full with written approval of Cardinal Laboratories.

Celey D. Keene, Lab Director/Quality Manager



PHONE (575) 393-2326 ° 101 E. MARLAND ° HOBBS, NM 88240

**Analytical Results For:**

CARMONA RESOURCES  
 ASHTON THIELKE  
 310 W WALL ST, SUITE 500  
 MIDLAND TX, 79701  
 Fax To:

Received: 04/10/2024  
 Reported: 04/11/2024  
 Project Name: CULEBRA BLUFF SECTION 25 CTB  
 Project Number: 2312  
 Project Location: EDDY CO NM

Sampling Date: 04/10/2024  
 Sampling Type: Soil  
 Sampling Condition: Cool & Intact  
 Sample Received By: Shalyn Rodriguez

**Sample ID: SW - 6 (1.5') (H241870-10)**

BTEX 8021B		mg/kg		Analyzed By: JH						
Analyte	Result	Reporting Limit	Analyzed	Method Blank	BS	% Recovery	True Value QC	RPD	Qualifier	
Benzene*	<0.050	0.050	04/10/2024	ND	2.14	107	2.00	0.259		
Toluene*	<0.050	0.050	04/10/2024	ND	2.14	107	2.00	0.0300		
Ethylbenzene*	<0.050	0.050	04/10/2024	ND	2.08	104	2.00	0.00312		
Total Xylenes*	<0.150	0.150	04/10/2024	ND	6.31	105	6.00	0.398		
Total BTEX	<0.300	0.300	04/10/2024	ND						

Surrogate: 4-Bromofluorobenzene (PID) 104 % 71.5-134

Chloride, SM4500Cl-B		mg/kg		Analyzed By: AC						
Analyte	Result	Reporting Limit	Analyzed	Method Blank	BS	% Recovery	True Value QC	RPD	Qualifier	
Chloride	128	16.0	04/11/2024	ND	416	104	400	7.41		

TPH 8015M		mg/kg		Analyzed By: MS					
Analyte	Result	Reporting Limit	Analyzed	Method Blank	BS	% Recovery	True Value QC	RPD	Qualifier
GRO C6-C10*	<10.0	10.0	04/10/2024	ND	218	109	200	3.11	
DRO >C10-C28*	<10.0	10.0	04/10/2024	ND	201	101	200	2.19	
EXT DRO >C28-C36	<10.0	10.0	04/10/2024	ND					

Surrogate: 1-Chlorooctane 85.2 % 48.2-134

Surrogate: 1-Chlorooctadecane 91.0 % 49.1-148

Cardinal Laboratories

\*=Accredited Analyte

PLEASE NOTE: Liability and Damages. Cardinal's liability and client's exclusive remedy for any claim arising, whether based in contract or tort, shall be limited to the amount paid by client for analyses. All claims, including those for negligence and any other cause whatsoever shall be deemed waived unless made in writing and received by Cardinal within thirty (30) days after completion of the applicable service. In no event shall Cardinal be liable for incidental or consequential damages, including, without limitation, business interruptions, loss of use, or loss of profits incurred by client, its subsidiaries, affiliates or successors arising out of or related to the performance of the services hereunder by Cardinal, regardless of whether such claim is based upon any of the above stated reasons or otherwise. Results relate only to the samples identified above. This report shall not be reproduced except in full with written approval of Cardinal Laboratories.

Celey D. Keene, Lab Director/Quality Manager





PHONE (575) 393-2326 ° 101 E. MARLAND ° HOBBS, NM 88240

**Analytical Results For:**

CARMONA RESOURCES  
 ASHTON THIELKE  
 310 W WALL ST, SUITE 500  
 MIDLAND TX, 79701  
 Fax To:

Received: 04/10/2024  
 Reported: 04/11/2024  
 Project Name: CULEBRA BLUFF SECTION 25 CTB  
 Project Number: 2312  
 Project Location: EDDY CO NM

Sampling Date: 04/10/2024  
 Sampling Type: Soil  
 Sampling Condition: Cool & Intact  
 Sample Received By: Shalyn Rodriguez

**Sample ID: SW - 7 (1.5') (H241870-11)**

BTEx 8021B		mg/kg		Analyzed By: JH						
Analyte	Result	Reporting Limit	Analyzed	Method Blank	BS	% Recovery	True Value QC	RPD	Qualifier	
Benzene*	<0.050	0.050	04/10/2024	ND	2.14	107	2.00	0.259		
Toluene*	<0.050	0.050	04/10/2024	ND	2.14	107	2.00	0.0300		
Ethylbenzene*	<0.050	0.050	04/10/2024	ND	2.08	104	2.00	0.00312		
Total Xylenes*	<0.150	0.150	04/10/2024	ND	6.31	105	6.00	0.398		
Total BTEx	<0.300	0.300	04/10/2024	ND						

Surrogate: 4-Bromofluorobenzene (PID) 105 % 71.5-134

Chloride, SM4500CI-B		mg/kg		Analyzed By: AC						
Analyte	Result	Reporting Limit	Analyzed	Method Blank	BS	% Recovery	True Value QC	RPD	Qualifier	
Chloride	192	16.0	04/11/2024	ND	416	104	400	7.41		

TPH 8015M		mg/kg		Analyzed By: MS					
Analyte	Result	Reporting Limit	Analyzed	Method Blank	BS	% Recovery	True Value QC	RPD	Qualifier
GRO C6-C10*	<10.0	10.0	04/11/2024	ND	218	109	200	3.11	
DRO >C10-C28*	<10.0	10.0	04/11/2024	ND	201	101	200	2.19	
EXT DRO >C28-C36	<10.0	10.0	04/11/2024	ND					

Surrogate: 1-Chlorooctane 71.1 % 48.2-134

Surrogate: 1-Chlorooctadecane 75.2 % 49.1-148

Cardinal Laboratories

\*=Accredited Analyte

PLEASE NOTE: Liability and Damages. Cardinal's liability and client's exclusive remedy for any claim arising, whether based in contract or tort, shall be limited to the amount paid by client for analyses. All claims, including those for negligence and any other cause whatsoever shall be deemed waived unless made in writing and received by Cardinal within thirty (30) days after completion of the applicable service. In no event shall Cardinal be liable for incidental or consequential damages, including, without limitation, business interruptions, loss of use, or loss of profits incurred by client, its subsidiaries, affiliates or successors arising out of or related to the performance of the services hereunder by Cardinal, regardless of whether such claim is based upon any of the above stated reasons or otherwise. Results relate only to the samples identified above. This report shall not be reproduced except in full with written approval of Cardinal Laboratories.

Celey D. Keene, Lab Director/Quality Manager



PHONE (575) 393-2326 ° 101 E. MARLAND ° HOBBS, NM 88240

**Analytical Results For:**

CARMONA RESOURCES  
 ASHTON THIELKE  
 310 W WALL ST, SUITE 500  
 MIDLAND TX, 79701  
 Fax To:

Received: 04/10/2024  
 Reported: 04/11/2024  
 Project Name: CULEBRA BLUFF SECTION 25 CTB  
 Project Number: 2312  
 Project Location: EDDY CO NM

Sampling Date: 04/10/2024  
 Sampling Type: Soil  
 Sampling Condition: Cool & Intact  
 Sample Received By: Shalyn Rodriguez

**Sample ID: SW - 8 (1.5') (H241870-12)**

BTEX 8021B		mg/kg		Analyzed By: JH					
Analyte	Result	Reporting Limit	Analyzed	Method Blank	BS	% Recovery	True Value QC	RPD	Qualifier
Benzene*	<0.050	0.050	04/10/2024	ND	2.14	107	2.00	0.259	
Toluene*	<0.050	0.050	04/10/2024	ND	2.14	107	2.00	0.0300	
Ethylbenzene*	<0.050	0.050	04/10/2024	ND	2.08	104	2.00	0.00312	
Total Xylenes*	<0.150	0.150	04/10/2024	ND	6.31	105	6.00	0.398	
Total BTEX	<0.300	0.300	04/10/2024	ND					

Surrogate: 4-Bromofluorobenzene (PID) 103 % 71.5-134

Chloride, SM4500Cl-B		mg/kg		Analyzed By: AC					
Analyte	Result	Reporting Limit	Analyzed	Method Blank	BS	% Recovery	True Value QC	RPD	Qualifier
Chloride	320	16.0	04/11/2024	ND	416	104	400	7.41	

TPH 8015M		mg/kg		Analyzed By: MS					
Analyte	Result	Reporting Limit	Analyzed	Method Blank	BS	% Recovery	True Value QC	RPD	Qualifier
GRO C6-C10*	<10.0	10.0	04/11/2024	ND	218	109	200	3.11	
DRO >C10-C28*	12.7	10.0	04/11/2024	ND	201	101	200	2.19	
EXT DRO >C28-C36	<10.0	10.0	04/11/2024	ND					

Surrogate: 1-Chlorooctane 71.3 % 48.2-134

Surrogate: 1-Chlorooctadecane 75.6 % 49.1-148

Cardinal Laboratories

\*=Accredited Analyte

PLEASE NOTE: Liability and Damages. Cardinal's liability and client's exclusive remedy for any claim arising, whether based in contract or tort, shall be limited to the amount paid by client for analyses. All claims, including those for negligence and any other cause whatsoever shall be deemed waived unless made in writing and received by Cardinal within thirty (30) days after completion of the applicable service. In no event shall Cardinal be liable for incidental or consequential damages, including, without limitation, business interruptions, loss of use, or loss of profits incurred by client, its subsidiaries, affiliates or successors arising out of or related to the performance of the services hereunder by Cardinal, regardless of whether such claim is based upon any of the above stated reasons or otherwise. Results relate only to the samples identified above. This report shall not be reproduced except in full with written approval of Cardinal Laboratories.

Celey D. Keene, Lab Director/Quality Manager



PHONE (575) 393-2326 ° 101 E. MARLAND ° HOBBS, NM 88240

**Analytical Results For:**

CARMONA RESOURCES  
 ASHTON THIELKE  
 310 W WALL ST, SUITE 500  
 MIDLAND TX, 79701  
 Fax To:

Received: 04/10/2024  
 Reported: 04/11/2024  
 Project Name: CULEBRA BLUFF SECTION 25 CTB  
 Project Number: 2312  
 Project Location: EDDY CO NM

Sampling Date: 04/10/2024  
 Sampling Type: Soil  
 Sampling Condition: Cool & Intact  
 Sample Received By: Shalyn Rodriguez

**Sample ID: SW - 9 (1.5') (H241870-13)**

BTEx 8021B		mg/kg		Analyzed By: JH					
Analyte	Result	Reporting Limit	Analyzed	Method Blank	BS	% Recovery	True Value QC	RPD	Qualifier
Benzene*	<0.050	0.050	04/10/2024	ND	2.14	107	2.00	0.259	
Toluene*	<0.050	0.050	04/10/2024	ND	2.14	107	2.00	0.0300	
Ethylbenzene*	<0.050	0.050	04/10/2024	ND	2.08	104	2.00	0.00312	
Total Xylenes*	<0.150	0.150	04/10/2024	ND	6.31	105	6.00	0.398	
Total BTEX	<0.300	0.300	04/10/2024	ND					

Surrogate: 4-Bromofluorobenzene (PID) 103 % 71.5-134

Chloride, SM4500Cl-B		mg/kg		Analyzed By: AC					
Analyte	Result	Reporting Limit	Analyzed	Method Blank	BS	% Recovery	True Value QC	RPD	Qualifier
Chloride	560	16.0	04/11/2024	ND	416	104	400	7.41	

TPH 8015M		mg/kg		Analyzed By: MS					
Analyte	Result	Reporting Limit	Analyzed	Method Blank	BS	% Recovery	True Value QC	RPD	Qualifier
GRO C6-C10*	<10.0	10.0	04/11/2024	ND	218	109	200	3.11	
DRO >C10-C28*	10.1	10.0	04/11/2024	ND	201	101	200	2.19	
EXT DRO >C28-C36	<10.0	10.0	04/11/2024	ND					

Surrogate: 1-Chlorooctane 72.1 % 48.2-134

Surrogate: 1-Chlorooctadecane 77.6 % 49.1-148

Cardinal Laboratories

\*=Accredited Analyte

PLEASE NOTE: Liability and Damages. Cardinal's liability and client's exclusive remedy for any claim arising, whether based in contract or tort, shall be limited to the amount paid by client for analyses. All claims, including those for negligence and any other cause whatsoever shall be deemed waived unless made in writing and received by Cardinal within thirty (30) days after completion of the applicable service. In no event shall Cardinal be liable for incidental or consequential damages, including, without limitation, business interruptions, loss of use, or loss of profits incurred by client, its subsidiaries, affiliates or successors arising out of or related to the performance of the services hereunder by Cardinal, regardless of whether such claim is based upon any of the above stated reasons or otherwise. Results relate only to the samples identified above. This report shall not be reproduced except in full with written approval of Cardinal Laboratories.

Celey D. Keene, Lab Director/Quality Manager



PHONE (575) 393-2326 ° 101 E. MARLAND ° HOBBS, NM 88240

Notes and Definitions

- ND Analyte NOT DETECTED at or above the reporting limit
- RPD Relative Percent Difference
- \*\* Samples not received at proper temperature of 6°C or below.
- \*\*\* Insufficient time to reach temperature.
- Chloride by SM4500Cl-B does not require samples be received at or below 6°C  
Samples reported on an as received basis (wet) unless otherwise noted on report

Cardinal Laboratories

\*=Accredited Analyte

PLEASE NOTE: Liability and Damages. Cardinal's liability and client's exclusive remedy for any claim arising, whether based in contract or tort, shall be limited to the amount paid by client for analyses. All claims, including those for negligence and any other cause whatsoever shall be deemed waived unless made in writing and received by Cardinal within thirty (30) days after completion of the applicable service. In no event shall Cardinal be liable for incidental or consequential damages, including, without limitation, business interruptions, loss of use, or loss of profits incurred by client, its subsidiaries, affiliates or successors arising out of or related to the performance of the services hereunder by Cardinal, regardless of whether such claim is based upon any of the above stated reasons or otherwise. Results relate only to the samples identified above. This report shall not be reproduced except in full with written approval of Cardinal Laboratories.

A handwritten signature in black ink, appearing to read "C. D. Keene".

Celey D. Keene, Lab Director/Quality Manager



Chain of Custody

Page 1 of 2

Work Order No:

42418710

Project Manager:	Ashton Thielke	Bill to: (if different)	Carmona Resources
Company Name:	Carmona Resources	Company Name:	
Address:	310 West Wall Ste. 500	Address:	
City, State ZIP:	Midland, TX 79701	City, State ZIP:	
Phone:	432-813-8988	Email:	ThielkeA@CarmonaResources.com

Work Order Comments	
Program: UST/PST <input type="checkbox"/> PRP <input type="checkbox"/> Brownfields <input type="checkbox"/> RRC <input type="checkbox"/> Superfund <input type="checkbox"/>	
State of Project:	
Reporting Level: Level II <input type="checkbox"/> Level III <input type="checkbox"/> PST/UST <input type="checkbox"/> RRP <input type="checkbox"/> Level IV <input type="checkbox"/>	
Deliverables: EDD <input type="checkbox"/> ADAPT <input type="checkbox"/> Other:	

Project Name:	Culebra Bluff Section 25 CTB	Turn Around	Pres. Code	ANALYSIS REQUEST										Preservative Codes			
Project Number:	2312	<input type="checkbox"/> Routine <input checked="" type="checkbox"/> Rush														None: NO	DI Water: H <sub>2</sub> O
Project Location:	Eddy Co, NM	Due Date:	24 Hour													Cool: Cool	MeOH: Me
Sampler's Name:	GPJ	TAT starts the day received by the lab, if received by 4:30pm														HCL: HC	HNO <sub>3</sub> : HN
PO #:																H <sub>2</sub> SO <sub>4</sub> : H <sub>2</sub>	NaOH: Na
SAMPLE RECEIPT	Temp Blank: Yes <input checked="" type="checkbox"/> No <input type="checkbox"/>	Wet Ice: Yes <input checked="" type="checkbox"/> No <input type="checkbox"/>	Thermometer ID:													H <sub>3</sub> PO <sub>4</sub> : HP	
Received Intact:	Yes <input checked="" type="checkbox"/> No <input type="checkbox"/>	Correction Factor:														NaHSO <sub>4</sub> : NABIS	
Cooler Custody Seals:	Yes <input checked="" type="checkbox"/> No <input type="checkbox"/> N/A	Temperature Reading:														Na <sub>2</sub> S <sub>2</sub> O <sub>3</sub> : NaSO <sub>3</sub>	
Sample Custody Seals:	Yes <input checked="" type="checkbox"/> No <input type="checkbox"/> N/A	Corrected Temperature:														Zn Acetate+NaOH: Zn	
Total Containers:																NaOH+Ascorbic Acid: SAPC	

Sample Identification										Date										Time										Soil										Water										Grab/Comp										# of Cont										TP										Sample Comments																													
CS-1 (1.5')										4/10/2024										14:00										X																				Comp										1										X										X										X										1-2									
CS-2 (1.5')										4/10/2024										14:02										X																				Comp										1										X										X										X										2									
CS-3 (1.5')										4/10/2024										14:04										X																				Comp										1										X										X										X										3									
CS-4 (1.5')										4/10/2024										14:05										X																				Comp										1										X										X										X										4									
SW-1 (1.5')										4/10/2024										14:07										X																				Comp										1										X										X										X										5									
SW-2 (1.5')										4/10/2024										14:08										X																				Comp										1										X										X										X										6									
SW-3 (1.5')										4/10/2024										14:09										X																				Comp										1										X										X										X										7									
SW-4 (1.5')										4/10/2024										14:10										X																				Comp										1										X										X										X										8									
SW-5 (1.5')										4/10/2024										14:13										X																				Comp										1										X										X										X										9									
SW-6 (1.5')										4/10/2024										14:14										X																				Comp										1										X										X										X										10									

Please send results to cmoehring@carmonaresources.com and mcarmona@carmonaresources.com

Relinquished by: (Signature)	Received by: (Signature)	Date/Time	Relinquished by: (Signature)	Received by: (Signature)	Date/Time
		4:10:24 4/10/24			
3		4			
5		6			



## Chain of Custody

Work Order No.

0281727

Page 1 of 2[illegible]

**District I**  
1625 N. French Dr., Hobbs, NM 88240  
Phone:(575) 393-6161 Fax:(575) 393-0720  
**District II**  
811 S. First St., Artesia, NM 88210  
Phone:(575) 748-1283 Fax:(575) 748-9720  
**District III**  
1000 Rio Brazos Rd., Aztec, NM 87410  
Phone:(505) 334-6178 Fax:(505) 334-6170  
**District IV**  
1220 S. St Francis Dr., Santa Fe, NM 87505  
Phone:(505) 476-3470 Fax:(505) 476-3462

State of New Mexico  
Energy, Minerals and Natural Resources  
Oil Conservation Division  
1220 S. St Francis Dr.  
Santa Fe, NM 87505

QUESTIONS  
  
Action 346396

QUESTIONS

Operator: CHEVRON U S A INC 6301 Deauville Blvd Midland, TX 79706	OGRID:	4323
	Action Number:	346396
	Action Type:	[C-141] Remediation Closure Request C-141 (C-141-v-Closure)

QUESTIONS

Prerequisites	
Incident ID (n#)	nAPP2407137317
Incident Name	NAPP2407137317 CULEBRA BLUFF SECTION 23 CTB @ 0
Incident Type	Produced Water Release
Incident Status	Remediation Closure Report Received
Incident Facility	[fAPP2127833704] Culebra Bluff Section 23 CTB

Location of Release Source	
Please answer all the questions in this group.	
Site Name	Culebra Bluff Section 23 CTB
Date Release Discovered	03/07/2024
Surface Owner	Private

Incident Details	
Please answer all the questions in this group.	
Incident Type	Produced Water Release
Did this release result in a fire or is the result of a fire	No
Did this release result in any injuries	No
Has this release reached or does it have a reasonable probability of reaching a watercourse	No
Has this release endangered or does it have a reasonable probability of endangering public health	No
Has this release substantially damaged or will it substantially damage property or the environment	No
Is this release of a volume that is or may with reasonable probability be detrimental to fresh water	No

Nature and Volume of Release	
Material(s) released, please answer all that apply below. Any calculations or specific justifications for the volumes provided should be attached to the follow-up C-141 submission.	
Crude Oil Released (bbls) Details	Cause: Liquids Unloading   Truck   Crude Oil   Released: 2 BBL   Recovered: 2 BBL   Lost: 0 BBL.
Produced Water Released (bbls) Details	Cause: Liquids Unloading   Truck   Produced Water   Released: 13 BBL   Recovered: 10 BBL   Lost: 3 BBL.
Is the concentration of chloride in the produced water >10,000 mg/l	Yes
Condensate Released (bbls) Details	Not answered.
Natural Gas Vented (Mcf) Details	Not answered.
Natural Gas Flared (Mcf) Details	Not answered.
Other Released Details	Not answered.
Are there additional details for the questions above (i.e. any answer containing Other, Specify, Unknown, and/or Fire, or any negative lost amounts)	Not answered.

**District I**

1625 N. French Dr., Hobbs, NM 88240  
Phone:(575) 393-6161 Fax:(575) 393-0720

**District II**

811 S. First St., Artesia, NM 88210  
Phone:(575) 748-1283 Fax:(575) 748-9720

**District III**

1000 Rio Brazos Rd., Aztec, NM 87410  
Phone:(505) 334-6178 Fax:(505) 334-6170

**District IV**

1220 S. St Francis Dr., Santa Fe, NM 87505  
Phone:(505) 476-3470 Fax:(505) 476-3462

**State of New Mexico**  
**Energy, Minerals and Natural Resources**  
**Oil Conservation Division**  
**1220 S. St Francis Dr.**  
**Santa Fe, NM 87505**

QUESTIONS, Page 2

Action 346396

**QUESTIONS (continued)**

Operator: CHEVRON U S A INC 6301 Deauville Blvd Midland, TX 79706	OGRID: 4323
	Action Number: 346396
	Action Type: [C-141] Remediation Closure Request C-141 (C-141-v-Closure)

**QUESTIONS**

Nature and Volume of Release (continued)	
Is this a gas only submission (i.e. only significant Mcf values reported)	No, according to supplied volumes this does not appear to be a "gas only" report.
Was this a major release as defined by Subsection A of 19.15.29.7 NMAC	No
Reasons why this would be considered a submission for a notification of a major release	Unavailable.
With the implementation of the 19.15.27 NMAC (05/25/2021), venting and/or flaring of natural gas (i.e. gas only) are to be submitted on the C-129 form.	

**Initial Response**

The responsible party must undertake the following actions immediately unless they could create a safety hazard that would result in injury.

The source of the release has been stopped	True
The impacted area has been secured to protect human health and the environment	True
Released materials have been contained via the use of berms or dikes, absorbent pads, or other containment devices	True
All free liquids and recoverable materials have been removed and managed appropriately	True
If all the actions described above have not been undertaken, explain why	Not answered.

Per Paragraph (4) of Subsection B of 19.15.29.8 NMAC the responsible party may commence remediation immediately after discovery of a release. If remediation has begun, please prepare and attach a narrative of actions to date in the follow-up C-141 submission. If remedial efforts have been successfully completed or if the release occurred within a lined containment area (see Subparagraph (a) of Paragraph (5) of Subsection A of 19.15.29.11 NMAC), please prepare and attach all information needed for closure evaluation in the follow-up C-141 submission.

I hereby certify that the information given above is true and complete to the best of my knowledge and understand that pursuant to OCD rules and regulations all operators are required to report and/or file certain release notifications and perform corrective actions for releases which may endanger public health or the environment. The acceptance of a C-141 report by the OCD does not relieve the operator of liability should their operations have failed to adequately investigate and remediate contamination that pose a threat to groundwater, surface water, human health or the environment. In addition, OCD acceptance of a C-141 report does not relieve the operator of responsibility for compliance with any other federal, state, or local laws and/or regulations.

I hereby agree and sign off to the above statement	Name: Amy Barnhill Title: Waste & Water Specialist Email: ABarnhill@chevron.com Date: 05/21/2024
----------------------------------------------------	-----------------------------------------------------------------------------------------------------------



**District I**

1625 N. French Dr., Hobbs, NM 88240  
Phone:(575) 393-6161 Fax:(575) 393-0720

**District II**

811 S. First St., Artesia, NM 88210  
Phone:(575) 748-1283 Fax:(575) 748-9720

**District III**

1000 Rio Brazos Rd., Aztec, NM 87410  
Phone:(505) 334-6178 Fax:(505) 334-6170

**District IV**

1220 S. St Francis Dr., Santa Fe, NM 87505  
Phone:(505) 476-3470 Fax:(505) 476-3462

**State of New Mexico**  
**Energy, Minerals and Natural Resources**  
**Oil Conservation Division**  
**1220 S. St Francis Dr.**  
**Santa Fe, NM 87505**

QUESTIONS, Page 3

Action 346396

**QUESTIONS (continued)**

Operator: CHEVRON U S A INC 6301 Deauville Blvd Midland, TX 79706	OGRID:	4323
	Action Number:	346396
	Action Type:	[C-141] Remediation Closure Request C-141 (C-141-v-Closure)

**QUESTIONS****Site Characterization**

Please answer all the questions in this group (only required when seeking remediation plan approval and beyond). This information must be provided to the appropriate district office no later than 90 days after the release discovery date.

What is the shallowest depth to groundwater beneath the area affected by the release in feet below ground surface (ft bgs)	Between 51 and 75 (ft.)
What method was used to determine the depth to ground water	Direct Measurement
Did this release impact groundwater or surface water	No
<b>What is the minimum distance, between the closest lateral extents of the release and the following surface areas:</b>	
A continuously flowing watercourse or any other significant watercourse	Between ½ and 1 (mi.)
Any lakebed, sinkhole, or playa lake (measured from the ordinary high-water mark)	Between 1 and 5 (mi.)
An occupied permanent residence, school, hospital, institution, or church	Between 1000 (ft.) and ½ (mi.)
A spring or a private domestic fresh water well used by less than five households for domestic or stock watering purposes	Between 1000 (ft.) and ½ (mi.)
Any other fresh water well or spring	Between ½ and 1 (mi.)
Incorporated municipal boundaries or a defined municipal fresh water well field	Between 1 and 5 (mi.)
A wetland	Between ½ and 1 (mi.)
A subsurface mine	Greater than 5 (mi.)
An (non-karst) unstable area	Between 1 and 5 (mi.)
Categorize the risk of this well / site being in a karst geology	Medium
A 100-year floodplain	Between ½ and 1 (mi.)
Did the release impact areas not on an exploration, development, production, or storage site	No

**Remediation Plan**

Please answer all the questions that apply or are indicated. This information must be provided to the appropriate district office no later than 90 days after the release discovery date.

Requesting a remediation plan approval with this submission	Yes
Attach a comprehensive report demonstrating the lateral and vertical extents of soil contamination associated with the release have been determined, pursuant to 19.15.29.11 NMAC and 19.15.29.13 NMAC.	
Have the lateral and vertical extents of contamination been fully delineated	Yes
Was this release entirely contained within a lined containment area	No

**Soil Contamination Sampling:** (Provide the highest observable value for each, in milligrams per kilograms.)

Chloride (EPA 300.0 or SM4500 Cl B)	976
TPH (GRO+DRO+MRO) (EPA SW-846 Method 8015M)	1649
GRO+DRO (EPA SW-846 Method 8015M)	1424
BTEX (EPA SW-846 Method 8021B or 8260B)	5
Benzene (EPA SW-846 Method 8021B or 8260B)	0

Per Subsection B of 19.15.29.11 NMAC unless the site characterization report includes completed efforts at remediation, the report must include a proposed remediation plan in accordance with 19.15.29.12 NMAC, which includes the anticipated timelines for beginning and completing the remediation.

On what estimated date will the remediation commence	04/10/2024
On what date will (or did) the final sampling or liner inspection occur	04/19/2024
On what date will (or was) the remediation complete(d)	04/19/2024
What is the estimated surface area (in square feet) that will be reclaimed	370
What is the estimated volume (in cubic yards) that will be reclaimed	0
What is the estimated surface area (in square feet) that will be remediated	370
What is the estimated volume (in cubic yards) that will be remediated	22

These estimated dates and measurements are recognized to be the best guess or calculation at the time of submission and may (be) change(d) over time as more remediation efforts are completed.

The OCD recognizes that proposed remediation measures may have to be minimally adjusted in accordance with the physical realities encountered during remediation. If the responsible party has any need to significantly deviate from the remediation plan proposed, then it should consult with the division to determine if another remediation plan submission is required.

**District I**

1625 N. French Dr., Hobbs, NM 88240  
Phone:(575) 393-6161 Fax:(575) 393-0720

**District II**

811 S. First St., Artesia, NM 88210  
Phone:(575) 748-1283 Fax:(575) 748-9720

**District III**

1000 Rio Brazos Rd., Aztec, NM 87410  
Phone:(505) 334-6178 Fax:(505) 334-6170

**District IV**

1220 S. St Francis Dr., Santa Fe, NM 87505  
Phone:(505) 476-3470 Fax:(505) 476-3462

**State of New Mexico**  
**Energy, Minerals and Natural Resources**  
**Oil Conservation Division**  
**1220 S. St Francis Dr.**  
**Santa Fe, NM 87505**

QUESTIONS, Page 4

Action 346396

**QUESTIONS (continued)**

Operator: CHEVRON U S A INC 6301 Deauville Blvd Midland, TX 79706	OGRID:	4323
	Action Number:	346396
	Action Type:	[C-141] Remediation Closure Request C-141 (C-141-v-Closure)

**QUESTIONS****Remediation Plan (continued)**

Please answer all the questions that apply or are indicated. This information must be provided to the appropriate district office no later than 90 days after the release discovery date.

**This remediation will (or is expected to) utilize the following processes to remediate / reduce contaminants:**

(Select all answers below that apply.)	
(Ex Situ) Excavation and <b>off-site</b> disposal (i.e. dig and haul, hydrovac, etc.)	Yes
Which OCD approved facility will be used for <b>off-site</b> disposal	LEA LAND LANDFILL [fEEM0112342028]
<b>OR</b> which OCD approved well (API) will be used for <b>off-site</b> disposal	Not answered.
<b>OR</b> is the <b>off-site</b> disposal site, to be used, out-of-state	Not answered.
<b>OR</b> is the <b>off-site</b> disposal site, to be used, an NMED facility	Not answered.
(Ex Situ) Excavation and <b>on-site</b> remediation (i.e. On-Site Land Farms)	Not answered.
(In Situ) Soil Vapor Extraction	Not answered.
(In Situ) Chemical processing (i.e. Soil Shredding, Potassium Permanganate, etc.)	Not answered.
(In Situ) Biological processing (i.e. Microbes / Fertilizer, etc.)	Not answered.
(In Situ) Physical processing (i.e. Soil Washing, Gypsum, Disking, etc.)	Not answered.
Ground Water Abatement pursuant to 19.15.30 NMAC	Not answered.
OTHER (Non-listed remedial process)	Yes
Other Non-listed Remedial Process. Please specify	"Assessment samples that exceeded regulatory remediation requirements for TPH, BTEX, and Chloride found on Table 1 of NMAC 19.15.29, to reflect groundwater at 51-100 feet, were remediated. During reclamation, the top 4 feet of soil will be address to achieve standards set in NMAC 19.15.29.13. A reclamation report will be created to document field activities . "

Per Subsection B of 19.15.29.11 NMAC unless the site characterization report includes completed efforts at remediation, the report must include a proposed remediation plan in accordance with 19.15.29.12 NMAC, which includes the anticipated timelines for beginning and completing the remediation.

I hereby certify that the information given above is true and complete to the best of my knowledge and understand that pursuant to OCD rules and regulations all operators are required to report and/or file certain release notifications and perform corrective actions for releases which may endanger public health or the environment. The acceptance of a C-141 report by the OCD does not relieve the operator of liability should their operations have failed to adequately investigate and remediate contamination that pose a threat to groundwater, surface water, human health or the environment. In addition, OCD acceptance of a C-141 report does not relieve the operator of responsibility for compliance with any other federal, state, or local laws and/or regulations.

I hereby agree and sign off to the above statement	Name: Amy Barnhill Title: Waste & Water Specialist Email: ABarnhill@chevron.com Date: 05/21/2024
----------------------------------------------------	-----------------------------------------------------------------------------------------------------------

The OCD recognizes that proposed remediation measures may have to be minimally adjusted in accordance with the physical realities encountered during remediation. If the responsible party has any need to significantly deviate from the remediation plan proposed, then it should consult with the division to determine if another remediation plan submission is required.

**District I**  
1625 N. French Dr., Hobbs, NM 88240  
Phone:(575) 393-6161 Fax:(575) 393-0720  
**District II**  
811 S. First St., Artesia, NM 88210  
Phone:(575) 748-1283 Fax:(575) 748-9720  
**District III**  
1000 Rio Brazos Rd., Aztec, NM 87410  
Phone:(505) 334-6178 Fax:(505) 334-6170  
**District IV**  
1220 S. St Francis Dr., Santa Fe, NM 87505  
Phone:(505) 476-3470 Fax:(505) 476-3462

**State of New Mexico**  
**Energy, Minerals and Natural Resources**  
**Oil Conservation Division**  
**1220 S. St Francis Dr.**  
**Santa Fe, NM 87505**

QUESTIONS, Page 5  
  
Action 346396

**QUESTIONS (continued)**

Operator:  CHEVRON U S A INC 6301 Deauville Blvd Midland, TX 79706	OGRID:  4323
	Action Number:  346396
	Action Type:  [C-141] Remediation Closure Request C-141 (C-141-v-Closure)

**QUESTIONS**

<b>Deferral Requests Only</b>	
<i>Only answer the questions in this group if seeking a deferral upon approval this submission. Each of the following items must be confirmed as part of any request for deferral of remediation.</i>	
Requesting a deferral of the remediation closure due date with the approval of this submission	No

**District I**

1625 N. French Dr., Hobbs, NM 88240  
Phone:(575) 393-6161 Fax:(575) 393-0720

**District II**

811 S. First St., Artesia, NM 88210  
Phone:(575) 748-1283 Fax:(575) 748-9720

**District III**

1000 Rio Brazos Rd., Aztec, NM 87410  
Phone:(505) 334-6178 Fax:(505) 334-6170

**District IV**

1220 S. St Francis Dr., Santa Fe, NM 87505  
Phone:(505) 476-3470 Fax:(505) 476-3462

**State of New Mexico**  
**Energy, Minerals and Natural Resources**  
**Oil Conservation Division**  
**1220 S. St Francis Dr.**  
**Santa Fe, NM 87505**

QUESTIONS, Page 6

Action 346396

**QUESTIONS (continued)**

Operator: CHEVRON U S A INC 6301 Deauville Blvd Midland, TX 79706	OGRID:	4323
	Action Number:	346396
	Action Type:	[C-141] Remediation Closure Request C-141 (C-141-v-Closure)

**QUESTIONS**

Sampling Event Information	
Last sampling notification (C-141N) recorded	331047
Sampling date pursuant to Subparagraph (a) of Paragraph (1) of Subsection D of 19.15.29.12 NMAC	04/19/2024
What was the (estimated) number of samples that were to be gathered	7
What was the sampling surface area in square feet	452

**Remediation Closure Request**

*Only answer the questions in this group if seeking remediation closure for this release because all remediation steps have been completed.*

Requesting a remediation closure approval with this submission	Yes
Have the lateral and vertical extents of contamination been fully delineated	Yes
Was this release entirely contained within a lined containment area	No
All areas reasonably needed for production or subsequent drilling operations have been stabilized, returned to the sites existing grade, and have a soil cover that prevents ponding of water, minimizing dust and erosion	Yes
What was the total surface area (in square feet) remediated	370
What was the total volume (cubic yards) remediated	22
All areas not reasonably needed for production or subsequent drilling operations have been reclaimed to contain a minimum of four feet of non-waste contain earthen material with concentrations less than 600 mg/kg chlorides, 100 mg/kg TPH, 50 mg/kg BTEX, and 10 mg/kg Benzene	Yes
What was the total surface area (in square feet) reclaimed	0
What was the total volume (in cubic yards) reclaimed	0
Summarize any additional remediation activities not included by answers (above)	"Assessment samples that exceeded regulatory remediation requirments for TPH, BTEX, and Chloride found on Table 1 of NMAC 19.15.29, to reflect groundwater at 51-100 feet, were remediated. During reclamation, the top 4 feet of soil will be address to achieve standards set in NMAC 19.15.29.13. A reclamation report will be created to document field activities . "

*The responsible party must attach information demonstrating they have complied with all applicable closure requirements and any conditions or directives of the OCD. This demonstration should be in the form of a comprehensive report (in .pdf format) including a scaled site map, sampling diagrams, relevant field notes, photographs of any excavation prior to backfilling, laboratory data including chain of custody documents of final sampling, and a narrative of the remedial activities. Refer to 19.15.29.12 NMAC.*

I hereby certify that the information given above is true and complete to the best of my knowledge and understand that pursuant to OCD rules and regulations all operators are required to report and/or file certain release notifications and perform corrective actions for releases which may endanger public health or the environment. The acceptance of a C-141 report by the OCD does not relieve the operator of liability should their operations have failed to adequately investigate and remediate contamination that pose a threat to groundwater, surface water, human health or the environment. In addition, OCD acceptance of a C-141 report does not relieve the operator of responsibility for compliance with any other federal, state, or local laws and/or regulations. The responsible party acknowledges they must substantially restore, reclaim, and re-vegetate the impacted surface area to the conditions that existed prior to the release or their final land use in accordance with 19.15.29.13 NMAC including notification to the OCD when reclamation and re-vegetation are complete.

I hereby agree and sign off to the above statement	Name: Amy Barnhill Title: Waste & Water Specialist Email: ABarnhill@chevron.com Date: 05/21/2024
----------------------------------------------------	-----------------------------------------------------------------------------------------------------------



**District I**  
1625 N. French Dr., Hobbs, NM 88240  
Phone:(575) 393-6161 Fax:(575) 393-0720  
**District II**  
811 S. First St., Artesia, NM 88210  
Phone:(575) 748-1283 Fax:(575) 748-9720  
**District III**  
1000 Rio Brazos Rd., Aztec, NM 87410  
Phone:(505) 334-6178 Fax:(505) 334-6170  
**District IV**  
1220 S. St Francis Dr., Santa Fe, NM 87505  
Phone:(505) 476-3470 Fax:(505) 476-3462

**State of New Mexico**  
**Energy, Minerals and Natural Resources**  
**Oil Conservation Division**  
**1220 S. St Francis Dr.**  
**Santa Fe, NM 87505**

QUESTIONS, Page 7  
  
Action 346396

QUESTIONS (continued)

Operator:  CHEVRON U S A INC 6301 Deauville Blvd Midland, TX 79706	OGRID:  4323
	Action Number:  346396
	Action Type:  [C-141] Remediation Closure Request C-141 (C-141-v-Closure)

QUESTIONS

Reclamation Report	
Only answer the questions in this group if all reclamation steps have been completed.	
Requesting a reclamation approval with this submission	No

**District I**  
1625 N. French Dr., Hobbs, NM 88240  
Phone:(575) 393-6161 Fax:(575) 393-0720  
**District II**  
811 S. First St., Artesia, NM 88210  
Phone:(575) 748-1283 Fax:(575) 748-9720  
**District III**  
1000 Rio Brazos Rd., Aztec, NM 87410  
Phone:(505) 334-6178 Fax:(505) 334-6170  
**District IV**  
1220 S. St Francis Dr., Santa Fe, NM 87505  
Phone:(505) 476-3470 Fax:(505) 476-3462

**State of New Mexico**  
**Energy, Minerals and Natural Resources**  
**Oil Conservation Division**  
**1220 S. St Francis Dr.**  
**Santa Fe, NM 87505**

CONDITIONS  
  
Action 346396

CONDITIONS

Operator: CHEVRON U S A INC 6301 Deauville Blvd Midland, TX 79706	OGRID: 4323
	Action Number: 346396
	Action Type: [C-141] Remediation Closure Request C-141 (C-141-v-Closure)

CONDITIONS

Created By	Condition	Condition Date
scwells	None	6/12/2024