

District I
1625 N. French Dr., Hobbs, NM 88240
Phone:(575) 393-6161 Fax:(575) 393-0720
District II
811 S. First St., Artesia, NM 88210
Phone:(575) 748-1283 Fax:(575) 748-9720
District III
1000 Rio Brazos Rd., Aztec, NM 87410
Phone:(505) 334-6178 Fax:(505) 334-6170
District IV
1220 S. St Francis Dr., Santa Fe, NM 87505
Phone:(505) 476-3470 Fax:(505) 476-3462

State of New Mexico
Energy, Minerals and Natural Resources
Oil Conservation Division
1220 S. St Francis Dr.
Santa Fe, NM 87505

QUESTIONS

Action 351069

QUESTIONS

Operator: CIMAREX ENERGY CO. OF COLORADO 6001 Deauville Blvd Midland, TX 79706	OGRID: 162683
	Action Number: 351069
	Action Type: [C-141] Initial C-141 (C-141-v-Initial)

QUESTIONS

Prerequisites	
Incident ID (n#)	nAPP2415374810
Incident Name	NAPP2415374810 CHOSA DRAW 27 FEDERAL COM 1 @ 0
Incident Type	Produced Water Release
Incident Status	Initial C-141 Received
Incident Facility	[fAPP2201146368] CHOSA DRAW 27 FEDERAL 1

Location of Release Source	
<i>Please answer all the questions in this group.</i>	
Site Name	Chosa Draw 27 Federal Com 1
Date Release Discovered	06/01/2024
Surface Owner	Federal

Incident Details	
<i>Please answer all the questions in this group.</i>	
Incident Type	Produced Water Release
Did this release result in a fire or is the result of a fire	No
Did this release result in any injuries	No
Has this release reached or does it have a reasonable probability of reaching a watercourse	No
Has this release endangered or does it have a reasonable probability of endangering public health	No
Has this release substantially damaged or will it substantially damage property or the environment	No
Is this release of a volume that is or may with reasonable probability be detrimental to fresh water	No

Nature and Volume of Release	
<i>Material(s) released, please answer all that apply below. Any calculations or specific justifications for the volumes provided should be attached to the follow-up C-141 submission.</i>	
Crude Oil Released (bbls) Details	Not answered.
Produced Water Released (bbls) Details	Cause: Equipment Failure Flow Line - Production Produced Water Released: 18 BBL Recovered: 18 BBL Lost: 0 BBL.
Is the concentration of chloride in the produced water >10,000 mg/l	Yes
Condensate Released (bbls) Details	Not answered.
Natural Gas Vented (Mcf) Details	Not answered.
Natural Gas Flared (Mcf) Details	Not answered.
Other Released Details	Not answered.
Are there additional details for the questions above (i.e. any answer containing Other, Specify, Unknown, and/or Fire, or any negative lost amounts)	A hole in the surface flowline coming off the separator, going to the water tank, released 18 barrels produced water into the lined containment. All fluids remained inside the containment and were recovered with a vac truck. The containment will be washed and a liner inspection will be scheduled in the coming weeks. Released: 18 barrels produced water Recovered: 18 barrels

District I

1625 N. French Dr., Hobbs, NM 88240
Phone:(575) 393-6161 Fax:(575) 393-0720

District II

811 S. First St., Artesia, NM 88210
Phone:(575) 748-1283 Fax:(575) 748-9720

District III

1000 Rio Brazos Rd., Aztec, NM 87410
Phone:(505) 334-6178 Fax:(505) 334-6170

District IV

1220 S. St Francis Dr., Santa Fe, NM 87505
Phone:(505) 476-3470 Fax:(505) 476-3462

State of New Mexico
Energy, Minerals and Natural Resources
Oil Conservation Division
1220 S. St Francis Dr.
Santa Fe, NM 87505

QUESTIONS, Page 2

Action 351069

QUESTIONS (continued)

Operator: CIMAREX ENERGY CO. OF COLORADO 6001 Deauville Blvd Midland, TX 79706	OGRID: 162683
	Action Number: 351069
	Action Type: [C-141] Initial C-141 (C-141-v-Initial)

QUESTIONS

Nature and Volume of Release (continued)	
Is this a gas only submission (i.e. only significant Mcf values reported)	No, according to supplied volumes this does not appear to be a "gas only" report.
Was this a major release as defined by Subsection A of 19.15.29.7 NMAC	No
Reasons why this would be considered a submission for a notification of a major release	Unavailable.
With the implementation of the 19.15.27 NMAC (05/25/2021), venting and/or flaring of natural gas (i.e. gas only) are to be submitted on the C-129 form.	

Initial Response

The responsible party must undertake the following actions immediately unless they could create a safety hazard that would result in injury.

The source of the release has been stopped	True
The impacted area has been secured to protect human health and the environment	True
Released materials have been contained via the use of berms or dikes, absorbent pads, or other containment devices	True
All free liquids and recoverable materials have been removed and managed appropriately	True
If all the actions described above have not been undertaken, explain why	Not answered.

Per Paragraph (4) of Subsection B of 19.15.29.8 NMAC the responsible party may commence remediation immediately after discovery of a release. If remediation has begun, please prepare and attach a narrative of actions to date in the follow-up C-141 submission. If remedial efforts have been successfully completed or if the release occurred within a lined containment area (see Subparagraph (a) of Paragraph (5) of Subsection A of 19.15.29.11 NMAC), please prepare and attach all information needed for closure evaluation in the follow-up C-141 submission.

I hereby certify that the information given above is true and complete to the best of my knowledge and understand that pursuant to OCD rules and regulations all operators are required to report and/or file certain release notifications and perform corrective actions for releases which may endanger public health or the environment. The acceptance of a C-141 report by the OCD does not relieve the operator of liability should their operations have failed to adequately investigate and remediate contamination that pose a threat to groundwater, surface water, human health or the environment. In addition, OCD acceptance of a C-141 report does not relieve the operator of responsibility for compliance with any other federal, state, or local laws and/or regulations.

I hereby agree and sign off to the above statement	Name: Laci Luig Title: ES&H Specialist Email: DL_PermianEnvironmental@coterra.com Date: 06/05/2024
--	---

District I

1625 N. French Dr., Hobbs, NM 88240
Phone:(575) 393-6161 Fax:(575) 393-0720

District II

811 S. First St., Artesia, NM 88210
Phone:(575) 748-1283 Fax:(575) 748-9720

District III

1000 Rio Brazos Rd., Aztec, NM 87410
Phone:(505) 334-6178 Fax:(505) 334-6170

District IV

1220 S. St Francis Dr., Santa Fe, NM 87505
Phone:(505) 476-3470 Fax:(505) 476-3462

State of New Mexico
Energy, Minerals and Natural Resources
Oil Conservation Division
1220 S. St Francis Dr.
Santa Fe, NM 87505

QUESTIONS, Page 3

Action 351069

QUESTIONS (continued)

Operator: CIMAREX ENERGY CO. OF COLORADO 6001 Deauville Blvd Midland, TX 79706	OGRID: 162683
	Action Number: 351069
	Action Type: [C-141] Initial C-141 (C-141-v-Initial)

QUESTIONS**Site Characterization**

Please answer all the questions in this group (only required when seeking remediation plan approval and beyond). This information must be provided to the appropriate district office no later than 90 days after the release discovery date.

What is the shallowest depth to groundwater beneath the area affected by the release in feet below ground surface (ft bgs)	Not answered.
What method was used to determine the depth to ground water	Not answered.
Did this release impact groundwater or surface water	Not answered.
What is the minimum distance, between the closest lateral extents of the release and the following surface areas:	
A continuously flowing watercourse or any other significant watercourse	Not answered.
Any lakebed, sinkhole, or playa lake (measured from the ordinary high-water mark)	Not answered.
An occupied permanent residence, school, hospital, institution, or church	Not answered.
A spring or a private domestic fresh water well used by less than five households for domestic or stock watering purposes	Not answered.
Any other fresh water well or spring	Not answered.
Incorporated municipal boundaries or a defined municipal fresh water well field	Not answered.
A wetland	Not answered.
A subsurface mine	Not answered.
An (non-karst) unstable area	Not answered.
Categorize the risk of this well / site being in a karst geology	Not answered.
A 100-year floodplain	Not answered.
Did the release impact areas not on an exploration, development, production, or storage site	Not answered.

Remediation Plan

Please answer all the questions that apply or are indicated. This information must be provided to the appropriate district office no later than 90 days after the release discovery date.

Requesting a remediation plan approval with this submission	No
The OCD recognizes that proposed remediation measures may have to be minimally adjusted in accordance with the physical realities encountered during remediation. If the responsible party has any need to significantly deviate from the remediation plan proposed, then it should consult with the division to determine if another remediation plan submission is required.	

District I
1625 N. French Dr., Hobbs, NM 88240
Phone:(575) 393-6161 Fax:(575) 393-0720
District II
811 S. First St., Artesia, NM 88210
Phone:(575) 748-1283 Fax:(575) 748-9720
District III
1000 Rio Brazos Rd., Aztec, NM 87410
Phone:(505) 334-6178 Fax:(505) 334-6170
District IV
1220 S. St Francis Dr., Santa Fe, NM 87505
Phone:(505) 476-3470 Fax:(505) 476-3462

State of New Mexico
Energy, Minerals and Natural Resources
Oil Conservation Division
1220 S. St Francis Dr.
Santa Fe, NM 87505

CONDITIONS

Action 351069

CONDITIONS

Operator: CIMAREX ENERGY CO. OF COLORADO 6001 Deauville Blvd Midland, TX 79706	OGRID: 162683
	Action Number: 351069
	Action Type: [C-141] Initial C-141 (C-141-v-Initial)

CONDITIONS

Created By	Condition	Condition Date
scwells	None	6/5/2024

< Back

Square/Rectangle Contained Spill with Vessel Displacement

Chosa Draw 27-1

L(Ft)

W(Ft)

D(In)

Oil %

50

45

.55

0

Tank Size (Ft)

Tank Count

Tank OD

Tank Count



H2O Spill Before Disp: 18.37

Tank Displacement Vol: 0.00

Oil Spill Total: 0.00

H2O Spill Total: 18.37

Total Bbls Spilled: 18.37

Total Gals Spilled: 771.37

Screenshot for future reference!



CIMAREX ENERGY
CHOSA DRAW 27 FEDERAL COM 1
EDDY, NM



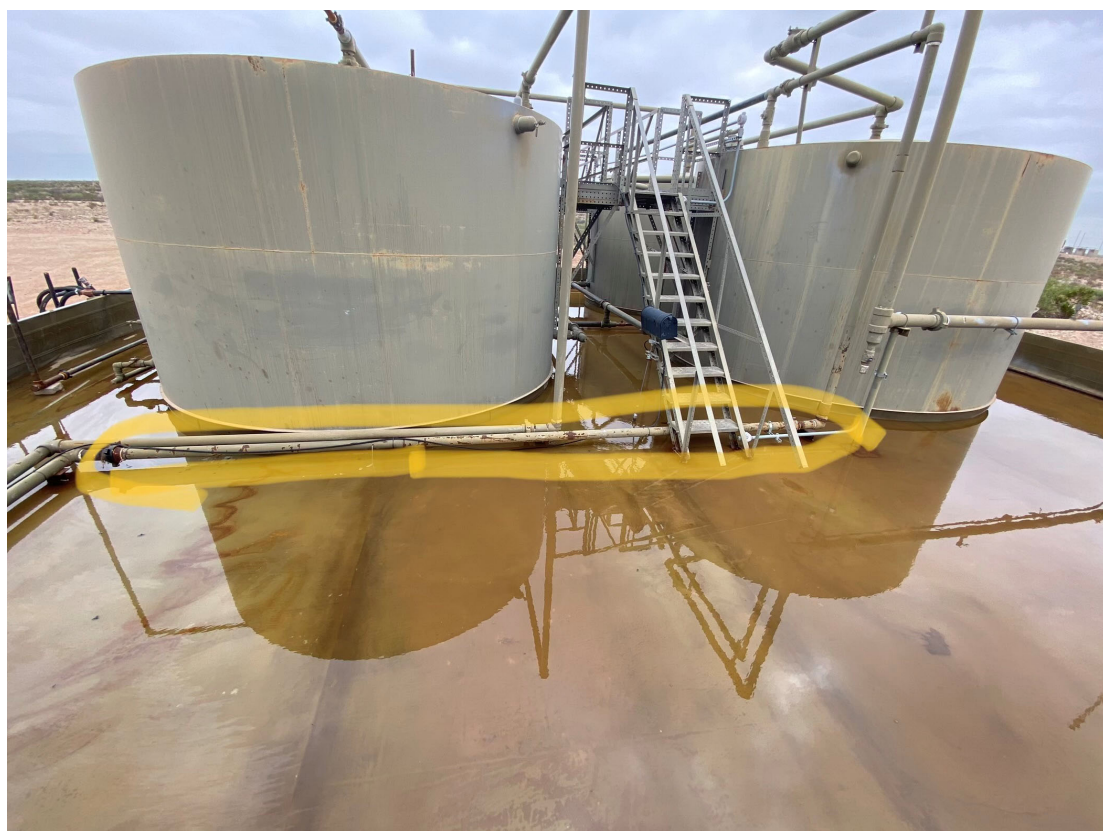


CIMAREX ENERGY
CHOSA DRAW 27 FEDERAL COM 1
EDDY, NM





CIMAREX ENERGY
CHOSA DRAW 27 FEDERAL COM 1
EDDY, NM





CIMAREX ENERGY
CHOSA DRAW 27 FEDERAL COM 1
EDDY, NM



District I
1625 N. French Dr., Hobbs, NM 88240
Phone:(575) 393-6161 Fax:(575) 393-0720
District II
811 S. First St., Artesia, NM 88210
Phone:(575) 748-1283 Fax:(575) 748-9720
District III
1000 Rio Brazos Rd., Aztec, NM 87410
Phone:(505) 334-6178 Fax:(505) 334-6170
District IV
1220 S. St Francis Dr., Santa Fe, NM 87505
Phone:(505) 476-3470 Fax:(505) 476-3462

State of New Mexico
Energy, Minerals and Natural Resources
Oil Conservation Division
1220 S. St Francis Dr.
Santa Fe, NM 87505

QUESTIONS

Action 363590

QUESTIONS

Operator: CIMAREX ENERGY CO. OF COLORADO 6001 Deauville Blvd Midland, TX 79706	OGRID:	162683
	Action Number:	363590
	Action Type:	[NOTIFY] Notification Of Liner Inspection (C-141L)

QUESTIONS

Prerequisites	
Incident ID (n#)	nAPP2415374810
Incident Name	NAPP2415374810 CHOSA DRAW 27 FEDERAL COM 1 @ 0
Incident Type	Produced Water Release
Incident Status	Initial C-141 Approved
Incident Facility	[fAPP2201146368] CHOSA DRAW 27 FEDERAL 1

Location of Release Source	
Site Name	Chosa Draw 27 Federal Com 1
Date Release Discovered	06/01/2024
Surface Owner	Federal

Liner Inspection Event Information	
Please answer all the questions in this group.	
What is the liner inspection surface area in square feet	2,700
Have all the impacted materials been removed from the liner	Yes
Liner inspection date pursuant to Subparagraph (a) of Paragraph (5) of Subsection A of 19.15.29.11 NMAC	07/17/2024
Time liner inspection will commence	09:30 AM
Please provide any information necessary for observers to liner inspection	Inspecting tank containment
Please provide any information necessary for navigation to liner inspection site	32.10702, -104.27833



Liner Integrity Certification

The following serves to verify that the affected liner has been inspected and found to be in serviceable condition in accordance with 19.15.29.11 A.(5)(a)(i-ii) of the New Mexico Administrative Code.

Facility ID:

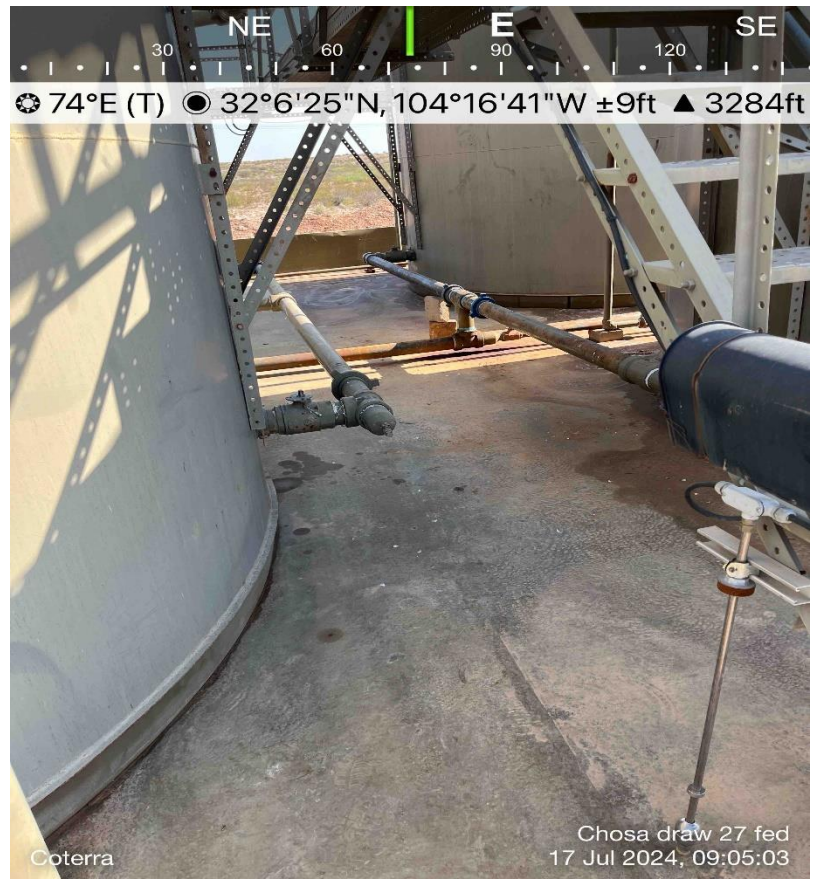
Date: 7/22/2024

Incident ID(s): nAPP2415374810

- ☒ Responsible Party has visually inspected the liner.
- ☒ Liner remains intact and was able to contain the leak in question.
- ☒ At least two business days' notice was given to the appropriate division district office before conducting the liner inspection.
- ☒ Photographs illustrating liner integrity are included.

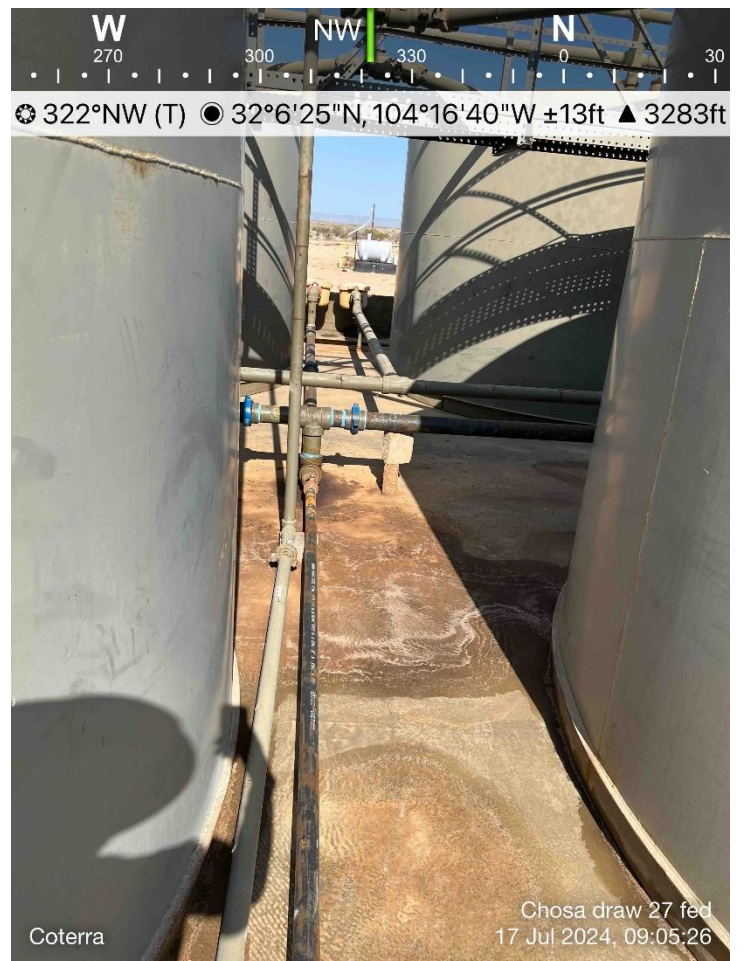
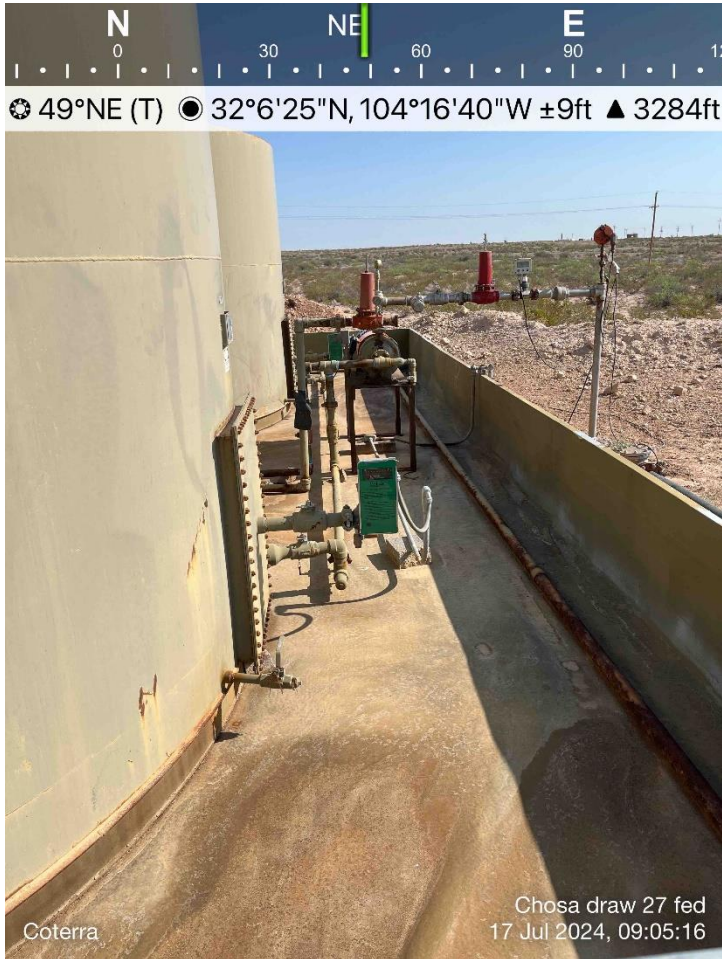


CIMAREX ENERGY
CHOSA DRAW 27 FEDERAL COM 1
EDDY, NM



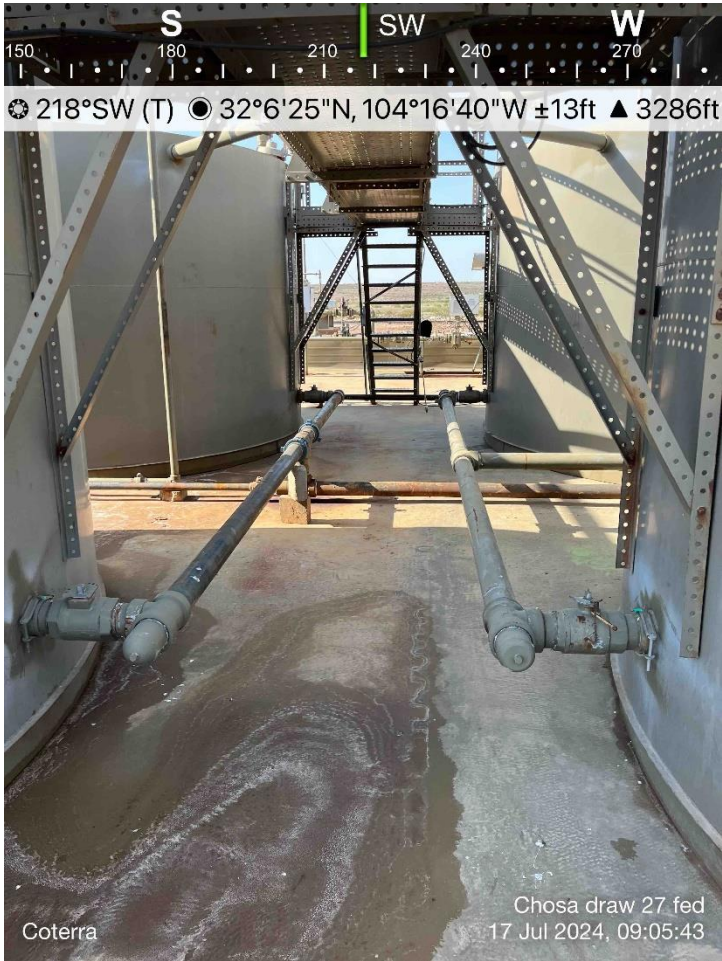


CIMAREX ENERGY
CHOSA DRAW 27 FEDERAL COM 1
EDDY, NM



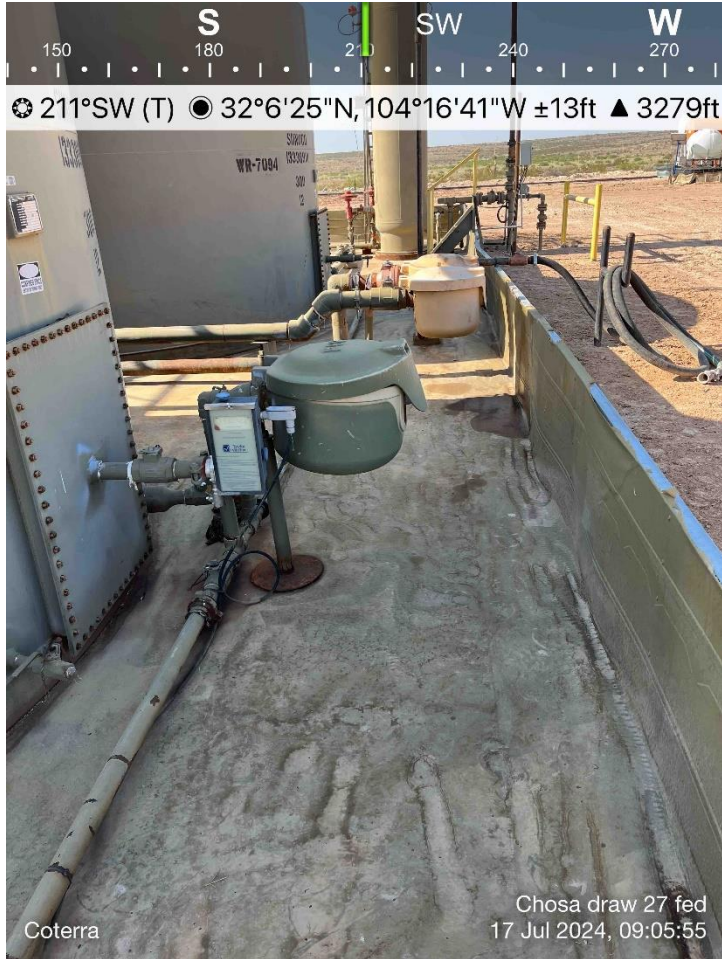


CIMAREX ENERGY
CHOSA DRAW 27 FEDERAL COM 1
EDDY, NM





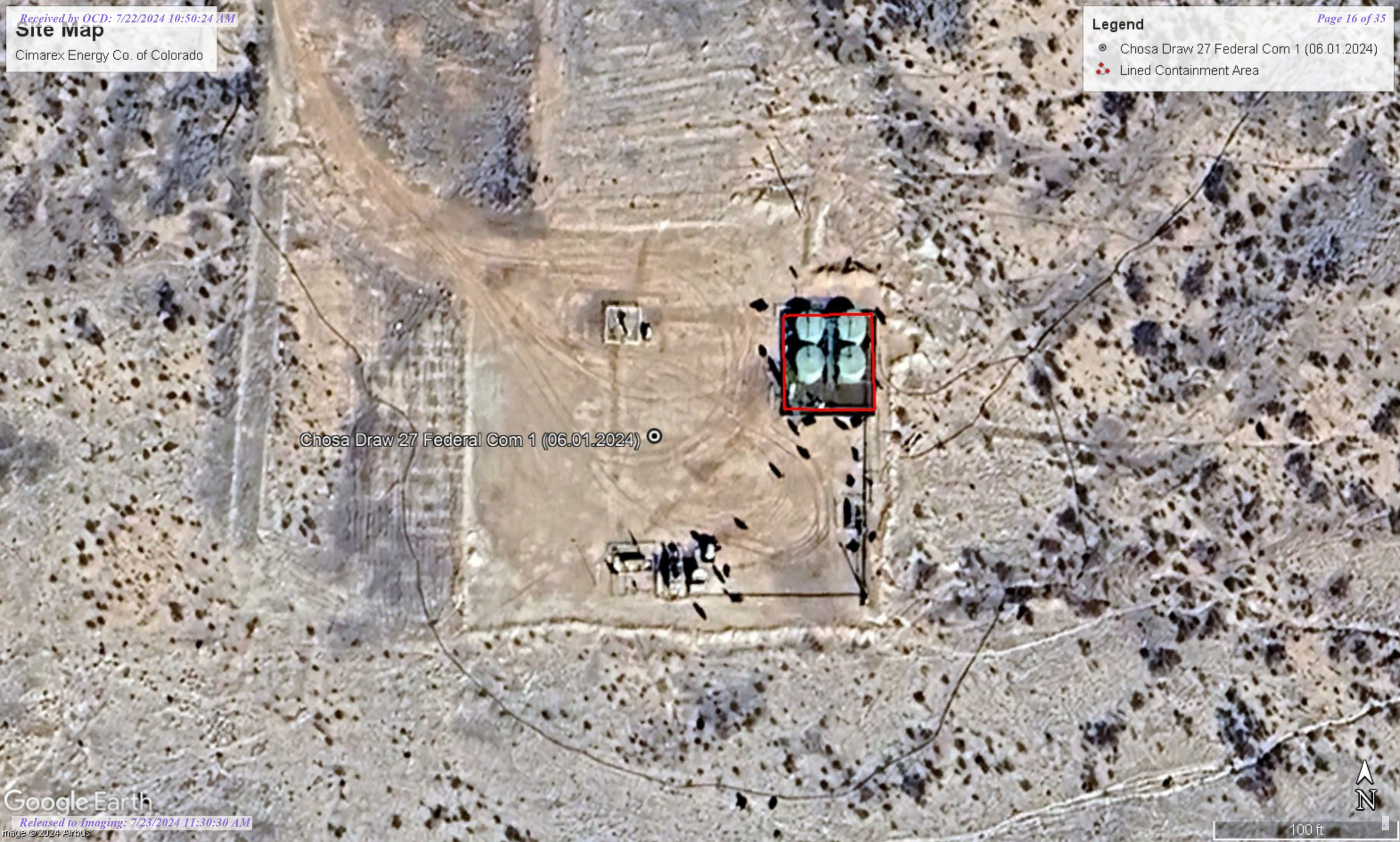
CIMAREX ENERGY
CHOSA DRAW 27 FEDERAL COM 1
EDDY, NM



Site map
Cimarex Energy Co. of Colorado

Legend

- Chosa Draw 27 Federal Com 1 (06.01.2024)
- Lined Containment Area



Chosa Draw 27 Federal Com 1 (06.01.2024)

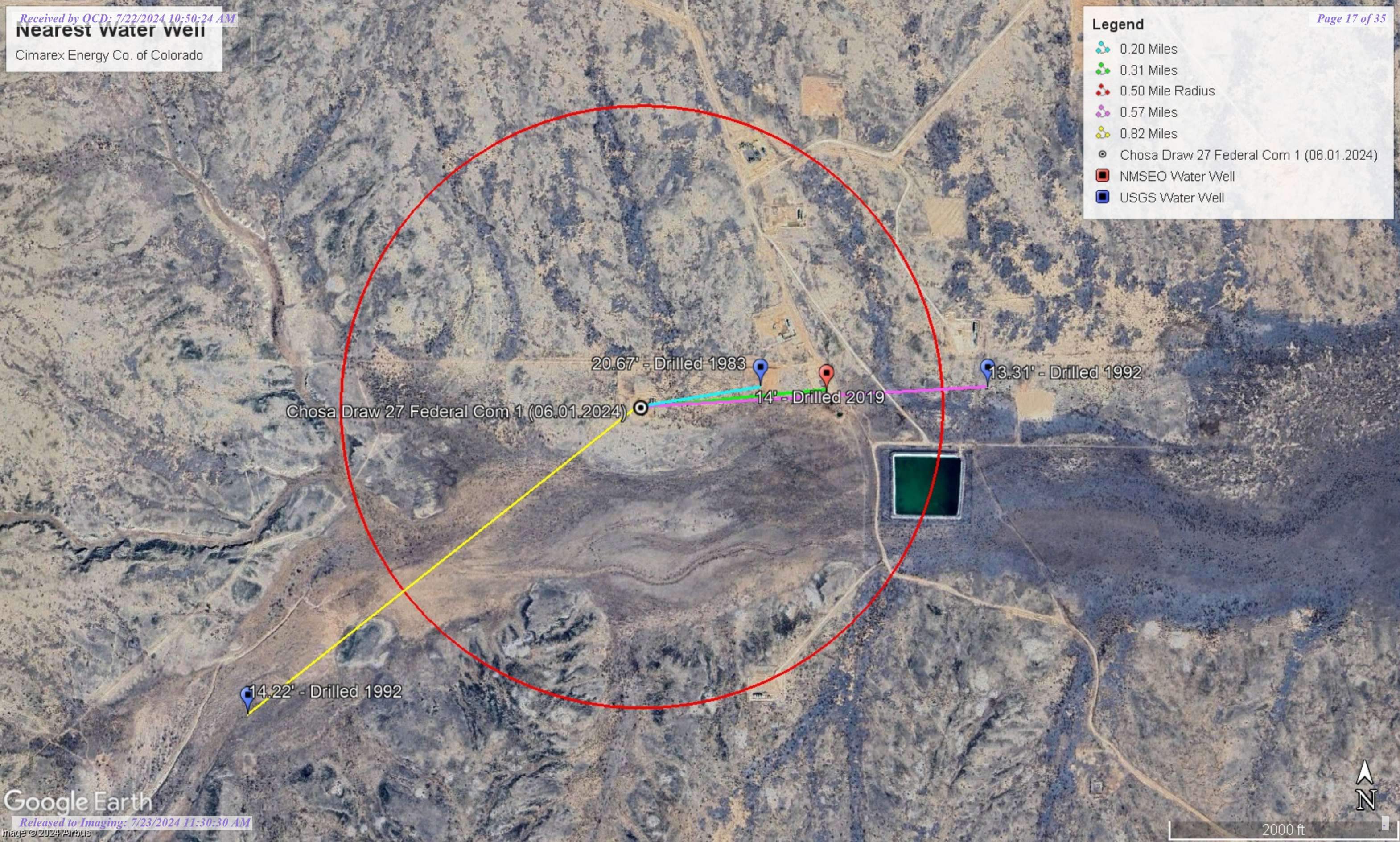


Nearest water well

Cimarex Energy Co. of Colorado

Legend

- 0.20 Miles
- 0.31 Miles
- 0.50 Mile Radius
- 0.57 Miles
- 0.82 Miles
- Chosa Draw 27 Federal Com 1 (06.01.2024)
- NMSEO Water Well
- USGS Water Well



High Karst

Cimarex Energy Co. of Colorado

Legend

- Chosa Draw 27 Federal Com 1 (06.01.2024)
- High

Chosa Draw 27 Federal Com 1 (06.01.2024)





New Mexico Office of the State Engineer

Water Column/Average Depth to Water

(A CLW##### in the POD suffix indicates the POD has been replaced & no longer serves a water right file.)

(R=POD has been replaced, O=orphaned, C=the file is closed)

(quarters are 1=NW 2=NE 3=SW 4=SE)

(quarters are smallest to largest)

(NAD83 UTM in meters)

(In feet)

POD Number	POD Sub-Code	basin	County	Q 64	Q 16	Q 4	Sec	Tws	Rng	X	Y	Distance	Depth Well	Depth Water	Water Column
C 04329 POD1	C	ED		2	2	2	27	25S	26E	568577	3552567	490	57	14	43
C 03655 POD3	CUB	ED		1	4	4	22	25S	26E	568458	3553019	616			
C 02220	CUB	ED		3	1	2	26	25S	26E	569598	3552352*	1520	35		
C 01368	C	ED			1	1	22	25S	26E	567261	3554059*	1741	143	118	25
C 03654 POD1	CUB	ED		2	3	1	24	25S	26E	570654	3553773	2853			
C 03569 POD1	CUB	ED		2	1	1	14	25S	26E	568862	3555746	3312	30	0	30
C 02221	CUB	ED		4	3	2	25	25S	26E	571412	3551961*	3371	35		
C 01013	C	ED				4	25	25S	26E	571505	3551456*	3580	245		

Average Depth to Water: **44 feet**

Minimum Depth: **0 feet**

Maximum Depth: **118 feet**

Record Count: 8

UTMNA83 Radius Search (in meters):

Easting (X): 568087.63

Northing (Y): 3552525.73

Radius: 4000

*UTM location was derived from PLSS - see Help

The data is furnished by the NMOSE/ISC and is accepted by the recipient with the expressed understanding that the OSE/ISC make no warranties, expressed or implied, concerning the accuracy, completeness, reliability, usability, or suitability for any particular purpose of the data.

7/18/24 2:05 PM

Page 1 of 1

WATER COLUMN/ AVERAGE
DEPTH TO WATER



USGS Home
Contact USGS
Search USGS

National Water Information System: Web Interface

USGS Water Resources

Data Category:
Groundwater

Geographic Area:
New Mexico

GO

Click to hideNews Bulletins

- Explore the NEW [USGS National Water Dashboard](#) interactive map to access real-time water data from over 13,500 stations nationwide.

Groundwater levels for New Mexico

Click to hide state-specific text

i Important: [Next Generation Monitoring Location Page](#)

Search Results -- 1 sites found

Agency code = usgs
site_no list =

- 320627104163001

Minimum number of levels = 1
[Save file of selected sites](#) to local disk for future upload

USGS 320627104163001 25S.26E.27.21144

Eddy County, New Mexico
Latitude 32°06'27", Longitude 104°16'30" NAD27
Land-surface elevation 3,251 feet above NAVD88
This well is completed in the Other aquifers (N9999OTHER) national aquifer.
This well is completed in the Alluvium, Bolson Deposits and Other Surface Deposits (110AVMB) local aquifer.

Output formats

Table of data
Tab-separated data
Graph of data
Reselect period

Date	Time	? Water-level date-time accuracy	? Parameter code	Water level, feet below land surface	Water level, feet above specific vertical datum	Referenced vertical datum	? Status	? Method of measurement	? Measuring agency	? Source of measurement
1983-02-15			D	62610	3228.66	NGVD29	1	Z		
1983-02-15			D	62611	3230.33	NAVD88	1	Z		
1983-02-15			D	72019	20.67		1	Z		

Explanation

Section	Code	Description
Water-level date-time accuracy	D	Date is accurate to the Day
Parameter code	62610	Groundwater level above NGVD 1929, feet
Parameter code	62611	Groundwater level above NAVD 1988, feet
Parameter code	72019	Depth to water level, feet below land surface
Referenced vertical datum	NAVD88	North American Vertical Datum of 1988
Referenced vertical datum	NGVD29	National Geodetic Vertical Datum of 1929
Status	1	Static
Method of measurement	Z	Other.

Section	Code	Description
Measuring agency		Not determined
Source of measurement		Not determined
Water-level approval status	A	Approved for publication -- Processing and review completed.

[Questions or Comments](#)
[Help](#)
[Data Tips](#)
[Explanation of terms](#)
[Subscribe for system changes](#)

[Accessibility](#) [FOIA](#) [Privacy](#) [Policies and Notices](#)
[U.S. Department of the Interior](#) | [U.S. Geological Survey](#)
Title: Groundwater for New Mexico: Water Levels
URL: <https://nwis.waterdata.usgs.gov/nm/nwis/gwlevels?>




Page Contact Information: [New Mexico Water Data Maintainer](#)
Page Last Modified: 2024-07-18 16:06:59 EDT
0.25 0.23 nadww02



New Mexico Office of the State Engineer

Point of Diversion Summary

		(quarters are 1=NW 2=NE 3=SW 4=SE)				(quarters are smallest to largest)				(NAD83 UTM in meters)		
Well Tag	POD Number	Q64	Q16	Q4	Sec	Tws	Rng	X	Y			
222B5	C 04329 POD1	2	2	2	27	25S	26E	568577	3552567			
x												
Driller License:		1348		Driller Company:			TAYLOR WATER WELL SERVICE					
Driller Name:		CLINTON E TAYLOR										
Drill Start Date:		06/07/2019		Drill Finish Date:			06/08/2019		Plug Date:			
Log File Date:		06/17/2019		PCW Rev Date:						Source: Shallow		
Pump Type:					Pipe Discharge Size:						Estimated Yield: 100 GPM	
Casing Size:		4.50		Depth Well:			57 feet		Depth Water:		14 feet	
x												
Water Bearing Stratifications:					Top	Bottom	Description					
					14	24	Other/Unknown					
					24	57	Other/Unknown					
x												
Casing Perforations:					Top	Bottom						
					20	57						
x												

The data is furnished by the NMOSE/ISC and is accepted by the recipient with the expressed understanding that the OSE/ISC make no warranties, expressed or implied, concerning the accuracy, completeness, reliability, usability, or suitability for any particular purpose of the data.



USGS Home
Contact USGS
Search USGS

National Water Information System: Web Interface

USGS Water Resources

Data Category:
Groundwater

Geographic Area:
New Mexico

GO

Click to hideNews Bulletins

- Explore the NEW [USGS National Water Dashboard](#) interactive map to access real-time water data from over 13,500 stations nationwide.

Groundwater levels for New Mexico

Click to hide state-specific text

i Important: [Next Generation Monitoring Location Page](#)

Search Results -- 1 sites found

Agency code = usgs
site_no list =

- 320627104160701

Minimum number of levels = 1
[Save file of selected sites](#) to local disk for future upload

USGS 320627104160701 25S.26E.27.22200

Eddy County, New Mexico
Latitude 32°06'27", Longitude 104°16'07" NAD27
Land-surface elevation 3,239 feet above NAVD88
This well is completed in the Other aquifers (N9999OTHER) national aquifer.
This well is completed in the Alluvium, Bolson Deposits and Other Surface Deposits (110AVMB) local aquifer.

Output formats

Table of data
Tab-separated data
Graph of data
Reselect period

Date	Time	? Water-level date-time accuracy	? Parameter code	Water level, feet below land surface	Water level, feet above specific vertical datum	Referenced vertical datum	? Status	? Method of measurement	? Measuring agency	? Source of measured
1983-02-01			D	62610	3221.16	NGVD29	1		Z	
1983-02-01			D	62611	3222.83	NAVD88	1		Z	
1983-02-01			D	72019	16.17		1		Z	
1987-10-08			D	62610	3224.30	NGVD29	1		Z	
1987-10-08			D	62611	3225.97	NAVD88	1		Z	
1987-10-08			D	72019	13.03		1		Z	
1992-11-19			D	62610	3224.02	NGVD29	P		S	
1992-11-19			D	62611	3225.69	NAVD88	P		S	
1992-11-19			D	72019	13.31		P		S	

Explanation

Section	Code	Description
Water-level date-time accuracy	D	Date is accurate to the Day
Parameter code	62610	Groundwater level above NGVD 1929, feet

Section	Code	Description
Parameter code	62611	Groundwater level above NAVD 1988, feet
Parameter code	72019	Depth to water level, feet below land surface
Referenced vertical datum	NAVD88	North American Vertical Datum of 1988
Referenced vertical datum	NGVD29	National Geodetic Vertical Datum of 1929
Status	1	Static
Status	P	Pumping
Method of measurement	S	Steel-tape measurement.
Method of measurement	Z	Other.
Measuring agency		Not determined
Source of measurement		Not determined
Water-level approval status	A	Approved for publication -- Processing and review completed.

[Questions or Comments](#)
[Help](#)
[Data Tips](#)
[Explanation of terms](#)
[Subscribe for system changes](#)

[Accessibility](#) [FOIA](#) [Privacy](#) [Policies and Notices](#)
[U.S. Department of the Interior](#) | [U.S. Geological Survey](#)
Title: Groundwater for New Mexico: Water Levels
URL: [https://nwis.waterdata.usgs.gov/nm/nwis/gwlevels?](https://nwis.waterdata.usgs.gov/nm/nwis/gwlevels?site_no=320627104160701&agency_cd=USGS&format=html)



Page Contact Information: [New Mexico Water Data Maintainer](#)
Page Last Modified: 2024-07-18 16:07:29 EDT
0.27 0.24 nadww02



USGS Home
Contact USGS
Search USGS

National Water Information System: Web Interface

USGS Water Resources

Data Category:
Groundwater

Geographic Area:
New Mexico

GO

Click to hideNews Bulletins

- Explore the NEW [USGS National Water Dashboard](#) interactive map to access real-time water data from over 13,500 stations nationwide.

Groundwater levels for New Mexico

Click to hide state-specific text

i Important: [Next Generation Monitoring Location Page](#)

Search Results -- 1 sites found

Agency code = usgs
site_no list =

- 320559104172201

Minimum number of levels = 1
[Save file of selected sites](#) to local disk for future upload

USGS 320559104172201 25S.26E.28.423113

Eddy County, New Mexico
Latitude 32°05'59", Longitude 104°17'22" NAD27
Land-surface elevation 3,283 feet above NAVD88
This well is completed in the Other aquifers (N9999OTHER) national aquifer.
This well is completed in the Alluvium, Bolson Deposits and Other Surface Deposits (110AVMB) local aquifer.

Output formats

Table of data
Tab-separated data
Graph of data
Reselect period

Date	Time	? Water-level date-time accuracy	? Parameter code	Water level, feet below land surface	Water level, feet above specific vertical datum	Referenced vertical datum	? Status	? Method of measurement	? Measuring agency	? Source of measurement
1983-02-01			D	62610	3266.82	NGVD29	1		Z	
1983-02-01			D	62611	3268.50	NAVD88	1		Z	
1983-02-01			D	72019	14.50		1		Z	
1987-10-08			D	62610	3268.06	NGVD29	1		Z	
1987-10-08			D	62611	3269.74	NAVD88	1		Z	
1987-10-08			D	72019	13.26		1		Z	
1992-11-19			D	62610	3267.10	NGVD29	P		S	
1992-11-19			D	62611	3268.78	NAVD88	P		S	
1992-11-19			D	72019	14.22		P		S	

Explanation

Section	Code	Description
Water-level date-time accuracy	D	Date is accurate to the Day
Parameter code	62610	Groundwater level above NGVD 1929, feet

Section	Code	Description
Parameter code	62611	Groundwater level above NAVD 1988, feet
Parameter code	72019	Depth to water level, feet below land surface
Referenced vertical datum	NAVD88	North American Vertical Datum of 1988
Referenced vertical datum	NGVD29	National Geodetic Vertical Datum of 1929
Status	1	Static
Status	P	Pumping
Method of measurement	S	Steel-tape measurement.
Method of measurement	Z	Other.
Measuring agency		Not determined
Source of measurement		Not determined
Water-level approval status	A	Approved for publication -- Processing and review completed.

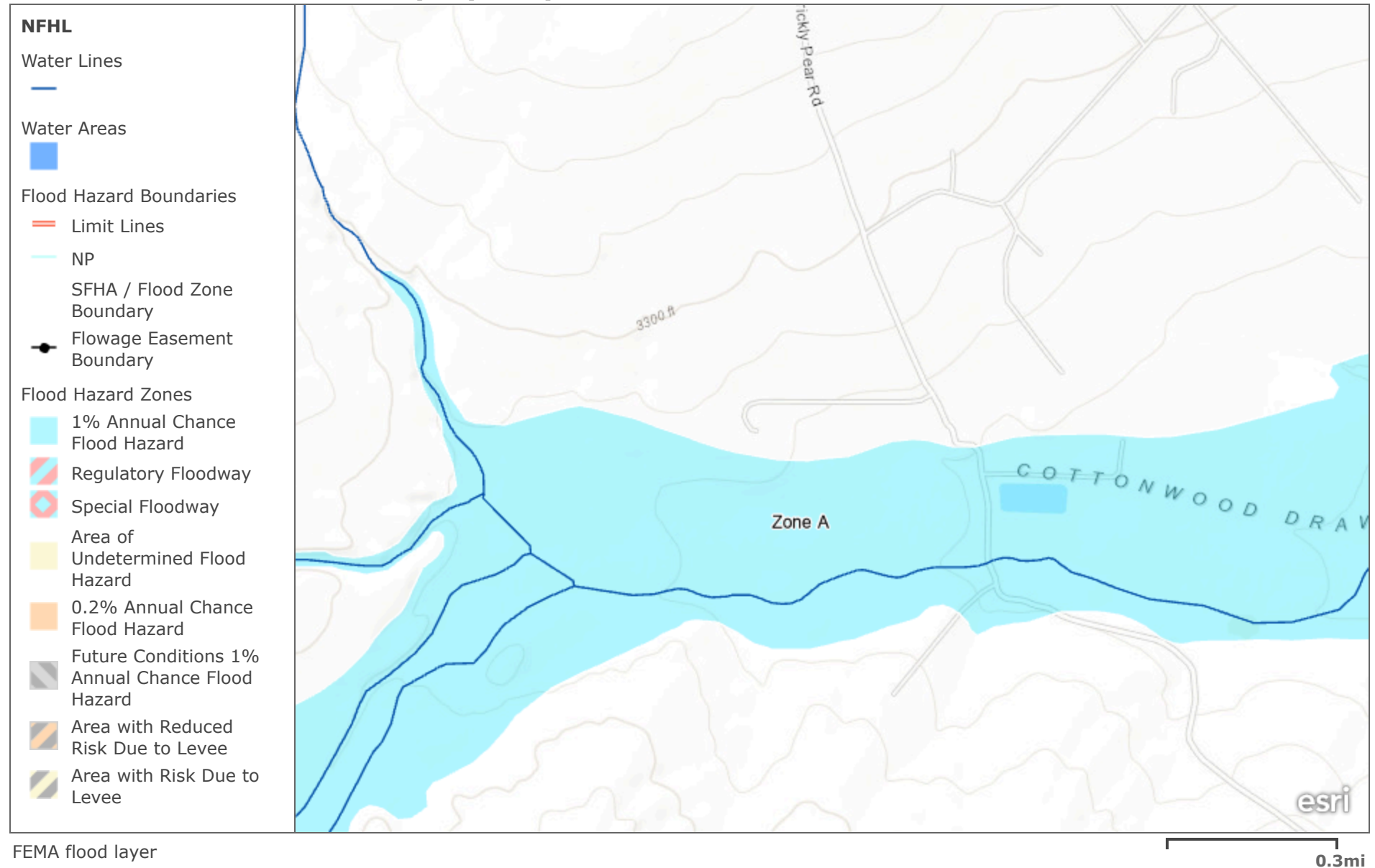
[Questions or Comments](#)
[Help](#)
[Data Tips](#)
[Explanation of terms](#)
[Subscribe for system changes](#)

[Accessibility](#) [FOIA](#) [Privacy](#) [Policies and Notices](#)
[U.S. Department of the Interior](#) | [U.S. Geological Survey](#)
Title: Groundwater for New Mexico: Water Levels
URL: [https://nwis.waterdata.usgs.gov/nm/nwis/gwlevels?](https://nwis.waterdata.usgs.gov/nm/nwis/gwlevels?site_no=320559104172201&agency_cd=USGS&format=html)



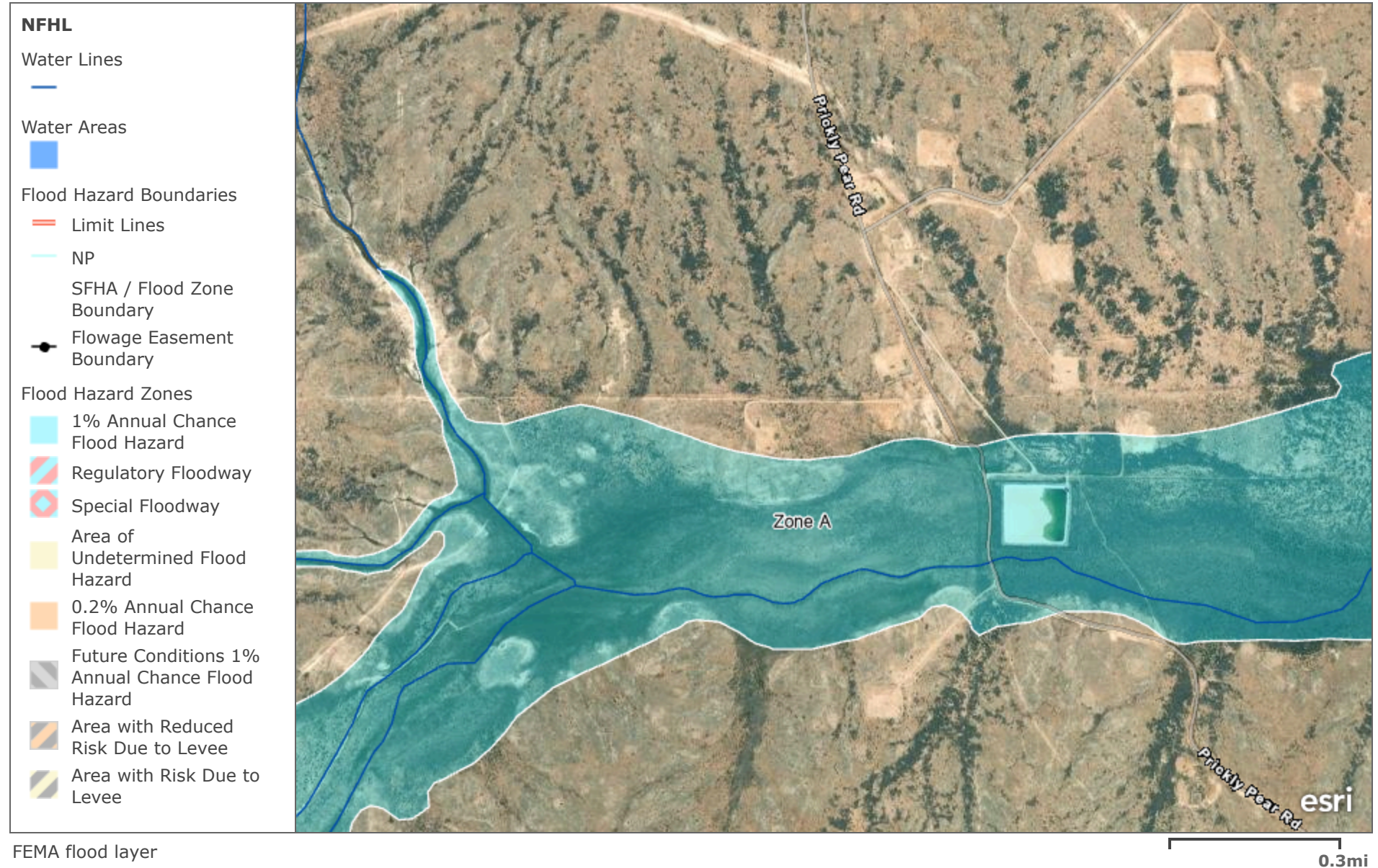
Page Contact Information: [New Mexico Water Data Maintainer](#)
Page Last Modified: 2024-07-18 16:08:23 EDT
0.26 0.23 nadww01

FEMA National Flood Hazard Layer (NFHL)



Bureau of Land Management, Texas Parks & Wildlife, Esri, HERE, Garmin, INCREMENT P, USGS, METI/NASA, EPA, USDA

FEMA National Flood Hazard Layer (NFHL)



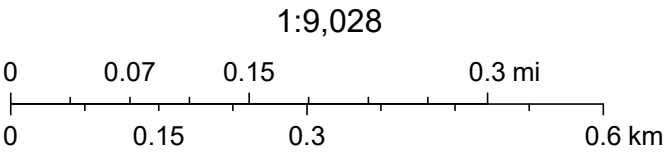
Maxar | Esri Community Maps Contributors, Texas Parks & Wildlife, © OpenStreetMap, Microsoft, CONANP, Esri, TomTom, Garmin, SafeGraph, GeoTechnologies, Inc, METI/NASA, USGS, EPA, NPS, US Census Bureau, USDA, USFWS

Chosa Draw 27 Federal Com 1 (06.01.2024)



7/18/2024, 3:03:04 PM

— OSE Streams



Esri Community Maps Contributors, Texas Parks & Wildlife, © OpenStreetMap, Microsoft, CONANP, Esri, TomTom, Garmin, SafeGraph, GeoTechnologies, Inc, METI/NASA, USGS, EPA, NPS, US Census Bureau, USDA, USFWS, Esri, NASA, NGA, USGS, FEMA, NM

District I
1625 N. French Dr., Hobbs, NM 88240
Phone:(575) 393-6161 Fax:(575) 393-0720
District II
811 S. First St., Artesia, NM 88210
Phone:(575) 748-1283 Fax:(575) 748-9720
District III
1000 Rio Brazos Rd., Aztec, NM 87410
Phone:(505) 334-6178 Fax:(505) 334-6170
District IV
1220 S. St Francis Dr., Santa Fe, NM 87505
Phone:(505) 476-3470 Fax:(505) 476-3462

State of New Mexico
Energy, Minerals and Natural Resources
Oil Conservation Division
1220 S. St Francis Dr.
Santa Fe, NM 87505

QUESTIONS

Action 366018

QUESTIONS

Operator: CIMAREX ENERGY CO. OF COLORADO 6001 Deauville Blvd Midland, TX 79706	OGRID: 162683
	Action Number: 366018
	Action Type: [C-141] Remediation Closure Request C-141 (C-141-v-Closure)

QUESTIONS

Prerequisites	
Incident ID (n#)	nAPP2415374810
Incident Name	NAPP2415374810 CHOSA DRAW 27 FEDERAL COM 1 @ 0
Incident Type	Produced Water Release
Incident Status	Remediation Closure Report Received
Incident Facility	[fAPP2201146368] CHOSA DRAW 27 FEDERAL 1

Location of Release Source	
Please answer all the questions in this group.	
Site Name	Chosa Draw 27 Federal Com 1
Date Release Discovered	06/01/2024
Surface Owner	Federal

Incident Details	
Please answer all the questions in this group.	
Incident Type	Produced Water Release
Did this release result in a fire or is the result of a fire	No
Did this release result in any injuries	No
Has this release reached or does it have a reasonable probability of reaching a watercourse	No
Has this release endangered or does it have a reasonable probability of endangering public health	No
Has this release substantially damaged or will it substantially damage property or the environment	No
Is this release of a volume that is or may with reasonable probability be detrimental to fresh water	No

Nature and Volume of Release	
Material(s) released, please answer all that apply below. Any calculations or specific justifications for the volumes provided should be attached to the follow-up C-141 submission.	
Crude Oil Released (bbls) Details	Not answered.
Produced Water Released (bbls) Details	Cause: Equipment Failure Flow Line - Production Produced Water Released: 18 BBL Recovered: 18 BBL Lost: 0 BBL.
Is the concentration of chloride in the produced water >10,000 mg/l	Yes
Condensate Released (bbls) Details	Not answered.
Natural Gas Vented (Mcf) Details	Not answered.
Natural Gas Flared (Mcf) Details	Not answered.
Other Released Details	Not answered.
Are there additional details for the questions above (i.e. any answer containing Other, Specify, Unknown, and/or Fire, or any negative lost amounts)	A hole in the surface flowline coming off the separator, going to the water tank, released 18 barrels produced water into the lined containment. All fluids remained inside the containment and were recovered with a vac truck. The containment will be washed and a liner inspection will be scheduled in the coming weeks. Released: 18 barrels produced water Recovered: 18 barrels

District I

1625 N. French Dr., Hobbs, NM 88240
Phone:(575) 393-6161 Fax:(575) 393-0720

District II

811 S. First St., Artesia, NM 88210
Phone:(575) 748-1283 Fax:(575) 748-9720

District III

1000 Rio Brazos Rd., Aztec, NM 87410
Phone:(505) 334-6178 Fax:(505) 334-6170

District IV

1220 S. St Francis Dr., Santa Fe, NM 87505
Phone:(505) 476-3470 Fax:(505) 476-3462

State of New Mexico
Energy, Minerals and Natural Resources
Oil Conservation Division
1220 S. St Francis Dr.
Santa Fe, NM 87505

QUESTIONS, Page 2

Action 366018

QUESTIONS (continued)

Operator: CIMAREX ENERGY CO. OF COLORADO 6001 Deauville Blvd Midland, TX 79706	OGRID:	162683
	Action Number:	366018
	Action Type:	[C-141] Remediation Closure Request C-141 (C-141-v-Closure)

QUESTIONS

Nature and Volume of Release (continued)	
Is this a gas only submission (i.e. only significant Mcf values reported)	No, according to supplied volumes this does not appear to be a "gas only" report.
Was this a major release as defined by Subsection A of 19.15.29.7 NMAC	No
Reasons why this would be considered a submission for a notification of a major release	Unavailable.
With the implementation of the 19.15.27 NMAC (05/25/2021), venting and/or flaring of natural gas (i.e. gas only) are to be submitted on the C-129 form.	

Initial Response

The responsible party must undertake the following actions immediately unless they could create a safety hazard that would result in injury.

The source of the release has been stopped	True
The impacted area has been secured to protect human health and the environment	True
Released materials have been contained via the use of berms or dikes, absorbent pads, or other containment devices	True
All free liquids and recoverable materials have been removed and managed appropriately	True
If all the actions described above have not been undertaken, explain why	Not answered.

Per Paragraph (4) of Subsection B of 19.15.29.8 NMAC the responsible party may commence remediation immediately after discovery of a release. If remediation has begun, please prepare and attach a narrative of actions to date in the follow-up C-141 submission. If remedial efforts have been successfully completed or if the release occurred within a lined containment area (see Subparagraph (a) of Paragraph (5) of Subsection A of 19.15.29.11 NMAC), please prepare and attach all information needed for closure evaluation in the follow-up C-141 submission.

I hereby certify that the information given above is true and complete to the best of my knowledge and understand that pursuant to OCD rules and regulations all operators are required to report and/or file certain release notifications and perform corrective actions for releases which may endanger public health or the environment. The acceptance of a C-141 report by the OCD does not relieve the operator of liability should their operations have failed to adequately investigate and remediate contamination that pose a threat to groundwater, surface water, human health or the environment. In addition, OCD acceptance of a C-141 report does not relieve the operator of responsibility for compliance with any other federal, state, or local laws and/or regulations.

I hereby agree and sign off to the above statement	Name: Laci Luig Title: ES&H Specialist Email: DL_PermianEnvironmental@coterra.com Date: 06/05/2024
--	---

District I

1625 N. French Dr., Hobbs, NM 88240
Phone:(575) 393-6161 Fax:(575) 393-0720

District II

811 S. First St., Artesia, NM 88210
Phone:(575) 748-1283 Fax:(575) 748-9720

District III

1000 Rio Brazos Rd., Aztec, NM 87410
Phone:(505) 334-6178 Fax:(505) 334-6170

District IV

1220 S. St Francis Dr., Santa Fe, NM 87505
Phone:(505) 476-3470 Fax:(505) 476-3462

State of New Mexico
Energy, Minerals and Natural Resources
Oil Conservation Division
1220 S. St Francis Dr.
Santa Fe, NM 87505

QUESTIONS, Page 3

Action 366018

QUESTIONS (continued)

Operator: CIMAREX ENERGY CO. OF COLORADO 6001 Deauville Blvd Midland, TX 79706	OGRID:	162683
	Action Number:	366018
	Action Type:	[C-141] Remediation Closure Request C-141 (C-141-v-Closure)

QUESTIONS**Site Characterization**

Please answer all the questions in this group (only required when seeking remediation plan approval and beyond). This information must be provided to the appropriate district office no later than 90 days after the release discovery date.

What is the shallowest depth to groundwater beneath the area affected by the release in feet below ground surface (ft bgs)	Less than or equal 25 (ft.)
What method was used to determine the depth to ground water	NM OSE iWaters Database Search
Did this release impact groundwater or surface water	No
What is the minimum distance, between the closest lateral extents of the release and the following surface areas:	
A continuously flowing watercourse or any other significant watercourse	Between 1000 (ft.) and ½ (mi.)
Any lakebed, sinkhole, or playa lake (measured from the ordinary high-water mark)	Between ½ and 1 (mi.)
An occupied permanent residence, school, hospital, institution, or church	Greater than 5 (mi.)
A spring or a private domestic fresh water well used by less than five households for domestic or stock watering purposes	Between 1000 (ft.) and ½ (mi.)
Any other fresh water well or spring	Between 1000 (ft.) and ½ (mi.)
Incorporated municipal boundaries or a defined municipal fresh water well field	Between 1 and 5 (mi.)
A wetland	Between 1000 (ft.) and ½ (mi.)
A subsurface mine	Between 1 and 5 (mi.)
An (non-karst) unstable area	Between ½ and 1 (mi.)
Categorize the risk of this well / site being in a karst geology	High
A 100-year floodplain	Between 1000 (ft.) and ½ (mi.)
Did the release impact areas not on an exploration, development, production, or storage site	No

Remediation Plan

Please answer all the questions that apply or are indicated. This information must be provided to the appropriate district office no later than 90 days after the release discovery date.

Requesting a remediation plan approval with this submission	Yes
Attach a comprehensive report demonstrating the lateral and vertical extents of soil contamination associated with the release have been determined, pursuant to 19.15.29.11 NMAC and 19.15.29.13 NMAC.	
Have the lateral and vertical extents of contamination been fully delineated	Yes
Was this release entirely contained within a lined containment area	Yes
Per Subsection B of 19.15.29.11 NMAC unless the site characterization report includes completed efforts at remediation, the report must include a proposed remediation plan in accordance with 19.15.29.12 NMAC, which includes the anticipated timelines for beginning and completing the remediation.	
On what estimated date will the remediation commence	06/05/2024
On what date will (or did) the final sampling or liner inspection occur	07/17/2024
On what date will (or was) the remediation complete(d)	06/05/2024
What is the estimated surface area (in square feet) that will be remediated	2700
What is the estimated volume (in cubic yards) that will be remediated	0
These estimated dates and measurements are recognized to be the best guess or calculation at the time of submission and may (be) change(d) over time as more remediation efforts are completed.	
The OCD recognizes that proposed remediation measures may have to be minimally adjusted in accordance with the physical realities encountered during remediation. If the responsible party has any need to significantly deviate from the remediation plan proposed, then it should consult with the division to determine if another remediation plan submission is required.	

District I

1625 N. French Dr., Hobbs, NM 88240
Phone:(575) 393-6161 Fax:(575) 393-0720

District II

811 S. First St., Artesia, NM 88210
Phone:(575) 748-1283 Fax:(575) 748-9720

District III

1000 Rio Brazos Rd., Aztec, NM 87410
Phone:(505) 334-6178 Fax:(505) 334-6170

District IV

1220 S. St Francis Dr., Santa Fe, NM 87505
Phone:(505) 476-3470 Fax:(505) 476-3462

State of New Mexico
Energy, Minerals and Natural Resources
Oil Conservation Division
1220 S. St Francis Dr.
Santa Fe, NM 87505

QUESTIONS, Page 4

Action 366018

QUESTIONS (continued)

Operator: CIMAREX ENERGY CO. OF COLORADO 6001 Deauville Blvd Midland, TX 79706	OGRID:	162683
	Action Number:	366018
	Action Type:	[C-141] Remediation Closure Request C-141 (C-141-v-Closure)

QUESTIONS**Remediation Plan (continued)**

Please answer all the questions that apply or are indicated. This information must be provided to the appropriate district office no later than 90 days after the release discovery date.

This remediation will (or is expected to) utilize the following processes to remediate / reduce contaminants:

(Select all answers below that apply.)

Is (or was) there affected material present needing to be removed	Yes
Is (or was) there a power wash of the lined containment area (to be) performed	Yes
OTHER (Non-listed remedial process)	Not answered.

Per Subsection B of 19.15.29.11 NMAC unless the site characterization report includes completed efforts at remediation, the report must include a proposed remediation plan in accordance with 19.15.29.12 NMAC, which includes the anticipated timelines for beginning and completing the remediation.

I hereby certify that the information given above is true and complete to the best of my knowledge and understand that pursuant to OCD rules and regulations all operators are required to report and/or file certain release notifications and perform corrective actions for releases which may endanger public health or the environment. The acceptance of a C-141 report by the OCD does not relieve the operator of liability should their operations have failed to adequately investigate and remediate contamination that pose a threat to groundwater, surface water, human health or the environment. In addition, OCD acceptance of a C-141 report does not relieve the operator of responsibility for compliance with any other federal, state, or local laws and/or regulations.

I hereby agree and sign off to the above statement	Name: Laci Luig Title: ES&H Specialist Email: DL_PermianEnvironmental@coterra.com Date: 07/22/2024
--	---

The OCD recognizes that proposed remediation measures may have to be minimally adjusted in accordance with the physical realities encountered during remediation. If the responsible party has any need to significantly deviate from the remediation plan proposed, then it should consult with the division to determine if another remediation plan submission is required.

District I

1625 N. French Dr., Hobbs, NM 88240
Phone:(575) 393-6161 Fax:(575) 393-0720

District II

811 S. First St., Artesia, NM 88210
Phone:(575) 748-1283 Fax:(575) 748-9720

District III

1000 Rio Brazos Rd., Aztec, NM 87410
Phone:(505) 334-6178 Fax:(505) 334-6170

District IV

1220 S. St Francis Dr., Santa Fe, NM 87505
Phone:(505) 476-3470 Fax:(505) 476-3462

State of New Mexico
Energy, Minerals and Natural Resources
Oil Conservation Division
1220 S. St Francis Dr.
Santa Fe, NM 87505

QUESTIONS, Page 6

Action 366018

QUESTIONS (continued)

Operator: CIMAREX ENERGY CO. OF COLORADO 6001 Deauville Blvd Midland, TX 79706	OGRID:	162683
	Action Number:	366018
	Action Type:	[C-141] Remediation Closure Request C-141 (C-141-v-Closure)

QUESTIONS

Liner Inspection Information	
Last liner inspection notification (C-141L) recorded	363590
Liner inspection date pursuant to Subparagraph (a) of Paragraph (5) of Subsection A of 19.15.29.11 NMAC	07/17/2024
Was all the impacted materials removed from the liner	Yes
What was the liner inspection surface area in square feet	2700

Remediation Closure Request

Only answer the questions in this group if seeking remediation closure for this release because all remediation steps have been completed.

Requesting a remediation closure approval with this submission	Yes
Have the lateral and vertical extents of contamination been fully delineated	Yes
Was this release entirely contained within a lined containment area	Yes
What was the total surface area (in square feet) remediated	2700
What was the total volume (cubic yards) remediated	0
Summarize any additional remediation activities not included by answers (above)	Vac truck removed fluids from containment and containment was power washed.

The responsible party must attach information demonstrating they have complied with all applicable closure requirements and any conditions or directives of the OCD. This demonstration should be in the form of a comprehensive report (in .pdf format) including a scaled site map, sampling diagrams, relevant field notes, photographs of any excavation prior to backfilling, laboratory data including chain of custody documents of final sampling, and a narrative of the remedial activities. Refer to 19.15.29.12 NMAC.

I hereby certify that the information given above is true and complete to the best of my knowledge and understand that pursuant to OCD rules and regulations all operators are required to report and/or file certain release notifications and perform corrective actions for releases which may endanger public health or the environment. The acceptance of a C-141 report by the OCD does not relieve the operator of liability should their operations have failed to adequately investigate and remediate contamination that pose a threat to groundwater, surface water, human health or the environment. In addition, OCD acceptance of a C-141 report does not relieve the operator of responsibility for compliance with any other federal, state, or local laws and/or regulations. The responsible party acknowledges they must substantially restore, reclaim, and re-vegetate the impacted surface area to the conditions that existed prior to the release or their final land use in accordance with 19.15.29.13 NMAC including notification to the OCD when reclamation and re-vegetation are complete.

I hereby agree and sign off to the above statement	Name: Laci Luig Title: ES&H Specialist Email: DL_PermianEnvironmental@coterra.com Date: 07/22/2024
--	---

District I
1625 N. French Dr., Hobbs, NM 88240
Phone:(575) 393-6161 Fax:(575) 393-0720
District II
811 S. First St., Artesia, NM 88210
Phone:(575) 748-1283 Fax:(575) 748-9720
District III
1000 Rio Brazos Rd., Aztec, NM 87410
Phone:(505) 334-6178 Fax:(505) 334-6170
District IV
1220 S. St Francis Dr., Santa Fe, NM 87505
Phone:(505) 476-3470 Fax:(505) 476-3462

State of New Mexico
Energy, Minerals and Natural Resources
Oil Conservation Division
1220 S. St Francis Dr.
Santa Fe, NM 87505

CONDITIONS

Action 366018

CONDITIONS

Operator: CIMAREX ENERGY CO. OF COLORADO 6001 Deauville Blvd Midland, TX 79706	OGRID: 162683
	Action Number: 366018
	Action Type: [C-141] Remediation Closure Request C-141 (C-141-v-Closure)

CONDITIONS

Created By	Condition	Condition Date
scwells	None	7/23/2024