



July 23, 2024

District Supervisor  
Oil Conservation Division, District 1  
1625 North French Drive  
Hobbs, New Mexico 88240

**Re: Liner Inspection and Closure Request  
BTA Oil Producers, LLC  
Ogden 20509 32-29 Federal Com #006H Battery Release  
Unit E, Section 32, Township 23 South, Range 28 East  
Eddy County, New Mexico  
Incident ID# nAPP2413560797**

Sir or Madam:

BTA Oil Producers, LLC (BTA) contracted Tetra Tech, Inc. (Tetra Tech) to assess a release that occurred due to an out of service tank valve being opened. The release footprint is located within Public Land Survey System (PLSS) Unit Letter E, Section 22, Township 25 South, Range 33 East, in Lea County, New Mexico (Site). The approximate release point occurred at coordinates 32.261935°, -104.117720°, as shown on Figure 1 and Figure 2.

## BACKGROUND

On May 14, 2024, a release was discovered at the Ogden 20509 32-29 Federal Com #006H battery. The cause of the release is indicated in the NOR as a gauge blowout. Photographs provided by BTA indicate that the release footprint was limited to the lined containment area, as presented in Figure 3. The release was approximately 59 bbls of produced water, of which 59 bbls of produced water were recovered. A Notification of Release (NOR) was submitted to the New Mexico Oil Conservation Division (NMOCD) online portal system. Following the NOR submittal the release was assigned the Incident ID nAPP2413560797. The NMOCD initial C-141 Initial Report was duly submitted via the NMOCD online portal system within the required timeframe. A copy of the NMOCD initial C-141 and NOR are included in Appendix A.

## LAND OWNERSHIP

According to the NMOCD Oil and Gas Map, the site is located on State Trust Land managed by the (NMSLO). A review of the NMSLO Land Status Map was completed, and the release site is located within active oil and gas lease VA08050002, under BTA OIL PRODUCERS, LLC. Based on guidance provided by the NMSLO, as the release footprint is located on an active oil and gas lease, and the footprint is wholly located within the boundaries of the active oil and gas lease, no Remediation Right of Entry (ROE) is required at the Site. The land status map is included in Appendix B.

## SITE CHARACTERIZATION

A site characterization was performed in accordance with 19.15.29.11 New Mexico State Administrative Code (NMAC) and the guidance document Process Updates re: Submissions of Form C-141 Release Notification and Corrective Actions (12/01/2023).

Tetra Tech

901 West Wall St., Suite 100, Midland, TX 79701

Tel 432.682.4559 Fax 432.682.3946 www.tetrattech.com

Liner Inspection and Closure Request  
July 23, 2024

BTA Oil Producers, LLC

A summary of the site characterization is presented below:

|  |                                |
|--|--------------------------------|
| <b>Shallowest depth to groundwater beneath the area affected by the release in feet below ground surface (feet bgs)</b>        | <b>51-100 feet bgs</b>         |
| <b>Method used to determine the depth to ground water</b>  | NM OSE iWaters Database Search |
| <b>Did this release impact groundwater or surface water?</b>   | No                             |
| <b><u>The minimum distance between the closest lateral extents of the release and the following surface areas:</u></b>         |                                |
| <b>A continuously flowing watercourse or any other significant watercourse</b>   | 0.88 miles                     |
| <b>Any lakebed, sinkhole, or playa lake (measured from the ordinary high-water mark)</b>                                       | 8.58 miles                     |
| <b>An occupied permanent residence, school, hospital, institution, or church</b>   | 23.22 miles                    |
| <b>A spring or private domestic fresh water well used by less than five households for domestic or stock watering purposes</b> | 2.17 miles                     |
| <b>Any other fresh water well or spring</b>  | > 5 miles                      |
| <b>Incorporated municipal boundaries or a defined municipal fresh water well field</b>   | > 5 miles                      |
| <b>A wetland</b>   | 1.31 miles                     |
| <b>A subsurface mine</b>   | > 5 miles                      |
| <b>A (non-karst) unstable area</b>   | 8.25 miles                     |
| <b>Categorized risk of this well / site being in a karst geology</b>   | High                           |
| <b>A 100-year floodplain</b>   | > 5 miles                      |
| <b>Did the release impact areas not on an exploration, development, production, or storage site?</b>                           | No                             |

According to the New Mexico Office of the State Engineers (NMOSE) reporting system, there is one (1) ground water well record within ½ mile (800 meters) of the Site located approximately 555 meters west of the release location with a depth to water of 60 feet below ground surface (bgs). The site characterization data are presented in Appendix B.

## REGULATORY FRAMEWORK

Based upon the release footprint and in accordance with Subsection E of 19.15.29.12 NMAC, per 19.15.29.11 NMAC, the site characterization data was used to determine recommended remedial action levels (RRALs) for benzene, toluene, ethylbenzene, and xylene (collectively referred to as BTEX), total petroleum hydrocarbons (TPH), and chlorides in soil.

Based on the absence of groundwater level data from water wells within ½ mile of the Site, and high karst potential, the strictest Table I closure criteria will be applied to this release incident. Thus, based on the site characterization, and in accordance with Table I of 19.15.29.12 NMAC, the RRALs for the Site are as follows:

Liner Inspection and Closure Request  
July 23, 2024

BTA Oil Producers, LLC

| Constituent       | Site RRAL |
|-------------------|-----------|
| Chloride          | 600 mg/kg |
| TPH (GRO+DRO+ORO) | 100 mg/kg |
| BTEX              | 50 mg/kg  |
| Benzene           | 10 mg/kg  |

Based upon the release footprint as contained completely within a lined secondary containment structure and in accordance with Subsection A(5)(a) of 19.15.29.11 NMAC, If the release occurred within a lined containment area, the responsible party must demonstrate liner integrity after affected material is removed and the affected area of the liner is exposed and provide the following:

- Certification on Form C-141 that the responsible party has visually inspected the liner where the release occurred, and the liner remains intact and had the ability to contain the leak in question; and
- The appropriate division district office is provided notification at least two business days before conducting the liner inspection.

### LINER INTEGRITY

Prior to the liner inspection, the facility was power washed, thus, the integrity of the liner could be inspected and confirmed clean. In accordance with 19.15.29.11(A)(5)(a) NMAC, notification of a liner inspection at the Ogden 20509 32-29 Federal Com #006H Battery was submitted via the NMOCD portal on May 28, 2024. The liner inspection notification email is included in Appendix C.

On May 31, 2024, Tetra Tech personnel performed an inspection of the liner within the containment area of the Ogden 20509 32-29 Federal Com #006H tank battery. This work was completed to verify the integrity of the liner. The liner was observed to underlie the entirety of the tank battery containment area. The liner was intact with no visible rips or tears and encompassed by an approximately 2-foot-tall muscle wall. The liner was anchored on the interior. At the time of the inspection, the liner was intact and had the ability to contain the documented release. Photographic documentation of the liner inspection is included in Appendix D. A previous liner inspection was completed for this facility (incident NRM2013250898) and approved in 2023.

### CONCLUSION

Based on the results of the liner inspection, BTA respectfully requests closure of the subject line incident. The release occurred within a lined containment area. The liner integrity demonstration is complete. The affected area of the liner has been visually inspected where the release occurred, and the liner remains intact and had the ability to contain the leak in question. Two business days' notice (C-141N) was provided to the appropriate division district office before conducting the liner inspection.

The final C-141 forms are enclosed in Appendix A. If you have any questions concerning the liner inspection for the Site, please call me at (512) 560-9064 or Christian at (512) 338-2861.

Sincerely,

**Tetra Tech, Inc.**



Nicholas M. Poole, G.I.T.  
Project Manager



Christian M. Llull, P.G.  
Program Manager

cc:

Mr. Ray Ramos, BTA Oil Producers, LLC

Liner Inspection and Closure Request  
July 23, 2024

BTA Oil Producers, LLC

---

## LIST OF ATTACHMENTS

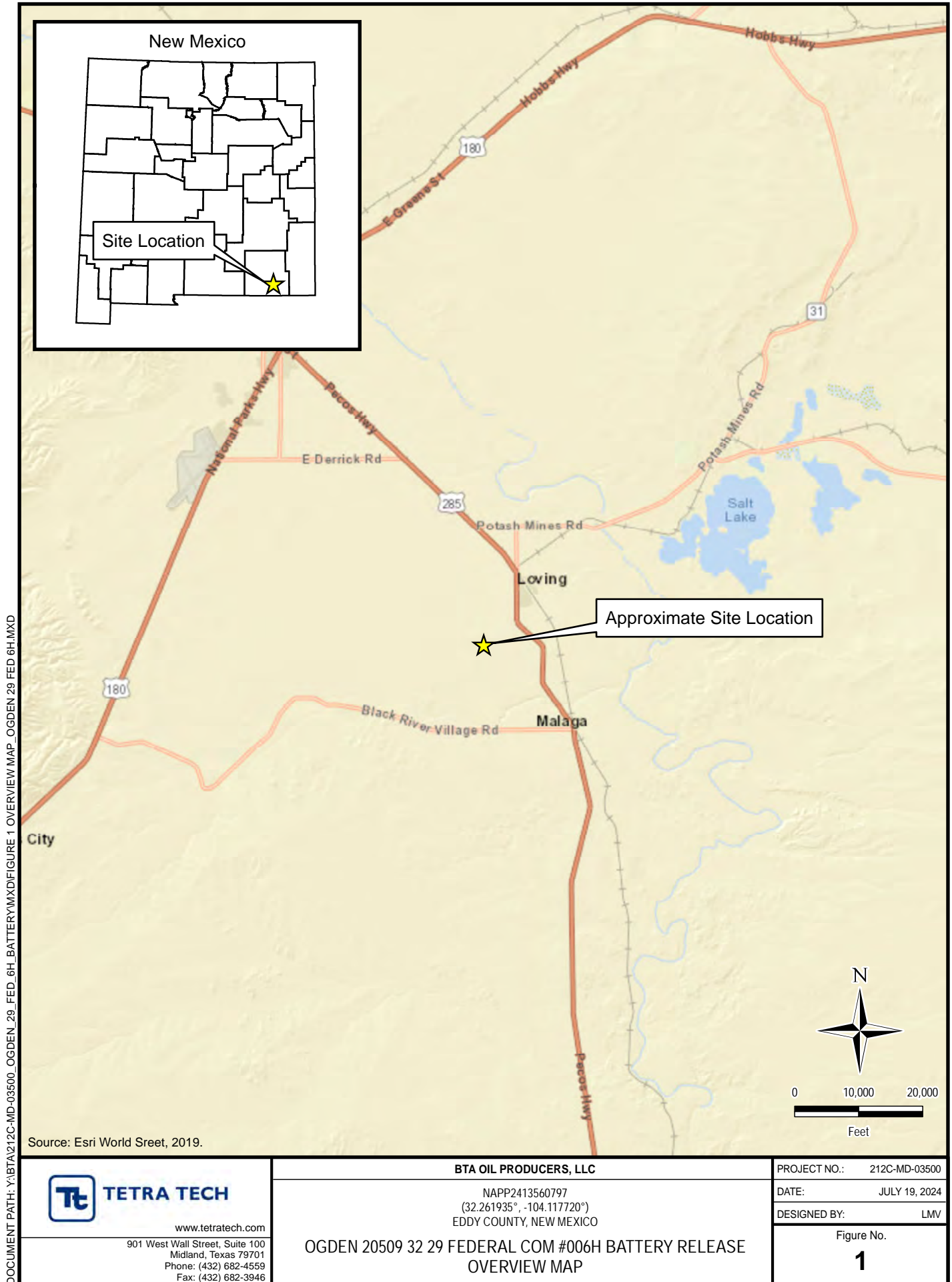
### Figures:

- Figure 1 – Overview Map
- Figure 2 – Topographic Map
- Figure 3 – Approximate Release Extent and Liner Inspection

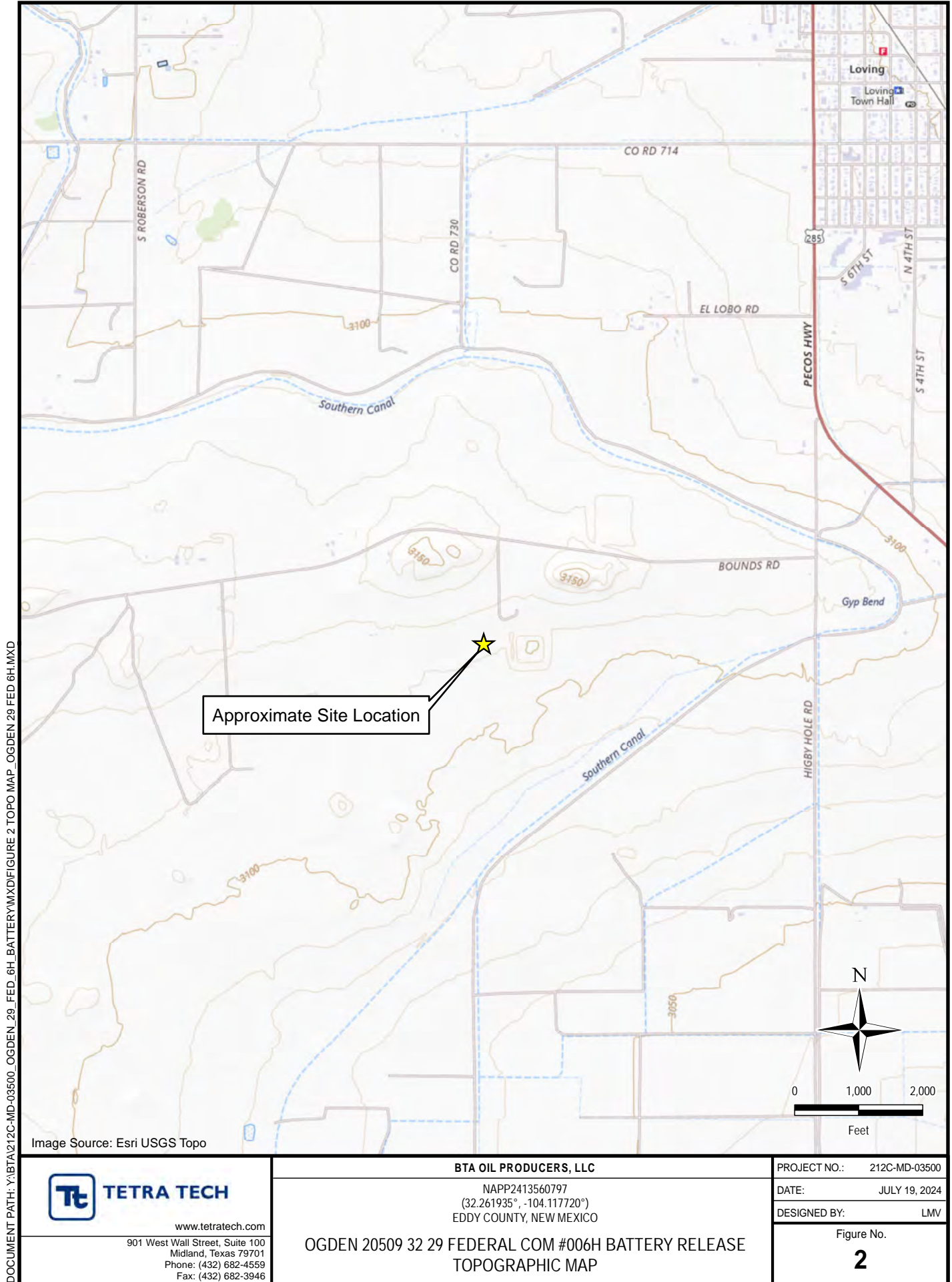
### Appendices:

- Appendix A – C-141 Forms
- Appendix B – Site Characterization Data
- Appendix C – Regulatory Correspondence
- Appendix D – Photographic Documentation

## **FIGURES**











## **APPENDIX A C-141 Forms**

**District I**  
1625 N. French Dr., Hobbs, NM 88240  
Phone:(575) 393-6161 Fax:(575) 393-0720

**District II**  
811 S. First St., Artesia, NM 88210  
Phone:(575) 748-1283 Fax:(575) 748-9720

**District III**  
1000 Rio Brazos Rd., Aztec, NM 87410  
Phone:(505) 334-6178 Fax:(505) 334-6170

**District IV**  
1220 S. St Francis Dr., Santa Fe, NM 87505  
Phone:(505) 476-3470 Fax:(505) 476-3462

State of New Mexico

Energy, Minerals and Natural Resources

Oil Conservation Division

1220 S. St Francis Dr.

Santa Fe, NM 87505

QUESTIONS

Action 342448

QUESTIONS

|   |  |
|---|--|
| Operator:<br>BTA OIL PRODUCERS, LLC<br>104 S Pecos<br>Midland, TX 79701 | OGRID:<br>260297                                       |
|   | Action Number:<br>342448                               |
|   | Action Type:<br>[NOTIFY] Notification Of Release (NOR) |

QUESTIONS

|  |  |
|--|--|
| Location of Release Source                     |  |
| Please answer all the questions in this group. |  |
| Site Name                                      | Ogden 20509 32 29 Federal Com #006 Battery Release |
| Date Release Discovered                        | 05/14/2024   |
| Surface Owner                                  | State  |

|  |                        |
|--|------------------------|
| Incident Details   |                        |
| Please answer all the questions in this group.   |                        |
| Incident Type  | Produced Water Release |
| Did this release result in a fire or is the result of a fire   | No                     |
| Did this release result in any injuries  | No                     |
| Has this release reached or does it have a reasonable probability of reaching a watercourse          | No                     |
| Has this release endangered or does it have a reasonable probability of endangering public health    | No                     |
| Has this release substantially damaged or will it substantially damage property or the environment   | No                     |
| Is this release of a volume that is or may with reasonable probability be detrimental to fresh water | No                     |

|  |  |
|--|--|
| Nature and Volume of Release   |  |
| Material(s) released, please answer all that apply below. Any calculations or specific justifications for the volumes provided should be attached to the follow-up C-141 submission. |  |
| Crude Oil Released (bbls) Details  | Not answered.  |
| Produced Water Released (bbls) Details   | Cause: Equipment Failure   Fitting   Produced Water   Released: 59 BBL   Recovered: 59 BBL   Lost: 0 BBL.  |
| Is the concentration of chloride in the produced water >10,000 mg/l  | Yes  |
| Condensate Released (bbls) Details   | Not answered.  |
| Natural Gas Vented (Mcf) Details   | Not answered.  |
| Natural Gas Flared (Mcf) Details   | Not answered.  |
| Other Released Details   | Not answered.  |
| Are there additional details for the questions above (i.e. any answer containing Other, Specify, Unknown, and/or Fire, or any negative lost amounts)                                 | On May 14, 2024, a gauge blowout was discovered which released approximately 59 bbls of produced water into the lined secondary containment structure of the tank battery. The release was fully contained within the battery secondary containment and the fluid was recovered and returned to the battery storage tanks. |

**District I**  
1625 N. French Dr., Hobbs, NM 88240  
Phone:(575) 393-6161 Fax:(575) 393-0720  
**District II**  
811 S. First St., Artesia, NM 88210  
Phone:(575) 748-1283 Fax:(575) 748-9720  
**District III**  
1000 Rio Brazos Rd., Aztec, NM 87410  
Phone:(505) 334-6178 Fax:(505) 334-6170  
**District IV**  
1220 S. St Francis Dr., Santa Fe, NM 87505  
Phone:(505) 476-3470 Fax:(505) 476-3462

State of New Mexico  
Energy, Minerals and Natural Resources  
Oil Conservation Division  
1220 S. St Francis Dr.  
Santa Fe, NM 87505

QUESTIONS, Page 2  
  
Action 342448

QUESTIONS (continued)

|   |  |
|---|--|
| Operator:<br>BTA OIL PRODUCERS, LLC<br>104 S Pecos<br>Midland, TX 79701 | OGRID:<br>260297                                       |
|   | Action Number:<br>342448                               |
|   | Action Type:<br>[NOTIFY] Notification Of Release (NOR) |

QUESTIONS

| Nature and Volume of Release (continued)  |  |
|---|--|
| Is this a gas only submission (i.e. only significant Mcf values reported)   | No, according to supplied volumes this does not appear to be a "gas only" report.  |
| Was this a major release as defined by Subsection A of 19.15.29.7 NMAC  | Yes  |
| Reasons why this would be considered a submission for a notification of a major release   | From paragraph A. "Major release" determine using:<br>(1) an unauthorized release of a volume, excluding gases, of 25 barrels or more. |
| With the implementation of the 19.15.27 NMAC (05/25/2021), venting and/or flaring of natural gas (i.e. gas only) are to be submitted on the C-129 form. |  |

| Initial Response  |               |
|---|---------------|
| The responsible party must undertake the following actions immediately unless they could create a safety hazard that would result in injury.  |               |
| The source of the release has been stopped  | True          |
| The impacted area has been secured to protect human health and the environment  | True          |
| Released materials have been contained via the use of berms or dikes, absorbent pads, or other containment devices  | True          |
| All free liquids and recoverable materials have been removed and managed appropriately  | True          |
| If all the actions described above have not been undertaken, explain why  | Not answered. |
| Per Paragraph 4 of Subsection B of 19.15.29.8 NMAC the responsible party may commence remediation immediately after discovery of a release. If remediation has begun, please prepare and attach a narrative of actions to date in the follow-up C-141 submission. If remedial efforts have been successfully completed or if the release occurred within a lined containment area (see 19.15.29.11(A)(5)(a) NMAC), please prepare and attach all information needed for closure evaluation in the follow-up C-141 submission. |               |

**District I**  
1625 N. French Dr., Hobbs, NM 88240  
Phone:(575) 393-6161 Fax:(575) 393-0720  
**District II**  
811 S. First St., Artesia, NM 88210  
Phone:(575) 748-1283 Fax:(575) 748-9720  
**District III**  
1000 Rio Brazos Rd., Aztec, NM 87410  
Phone:(505) 334-6178 Fax:(505) 334-6170  
**District IV**  
1220 S. St Francis Dr., Santa Fe, NM 87505  
Phone:(505) 476-3470 Fax:(505) 476-3462

**State of New Mexico**  
**Energy, Minerals and Natural Resources**  
**Oil Conservation Division**  
**1220 S. St Francis Dr.**  
**Santa Fe, NM 87505**

ACKNOWLEDGMENTS  
  
Action 342448

ACKNOWLEDGMENTS

|   |  |
|---|--|
| Operator:<br>BTA OIL PRODUCERS, LLC<br>104 S Pecos<br>Midland, TX 79701 | OGRID:<br>260297                                       |
|   | Action Number:<br>342448                               |
|   | Action Type:<br>[NOTIFY] Notification Of Release (NOR) |

ACKNOWLEDGMENTS

|                                     |  |
|-------------------------------------|--|
| <input checked="" type="checkbox"/> | I acknowledge that I am authorized to submit notification of a release on behalf of my operator.   |
| <input checked="" type="checkbox"/> | I acknowledge that upon submitting this application, I will be creating a new incident file (assigned to my operator) to track the notification(s) and corrective action(s) for a release, pursuant to NMAC 19.15.29.  |
| <input checked="" type="checkbox"/> | I acknowledge that creating a new incident file will require my operator to file subsequent submission(s) of form "C-141, Application for administrative approval of a release notification and corrective action", pursuant to NMAC 19.15.29.   |
| <input checked="" type="checkbox"/> | I hereby certify that the information given above is true and complete to the best of my knowledge and understand that pursuant to OCD rules and regulations all operators are required to report and/or file certain release notifications and perform corrective actions for releases which may endanger public health or the environment. |
| <input checked="" type="checkbox"/> | I acknowledge the fact that the acceptance of a C-141 report by the OCD does not relieve the operator of liability should their operations have failed to adequately investigate and remediate contamination that pose a threat to groundwater, surface water, human health or the environment.  |
| <input checked="" type="checkbox"/> | I acknowledge the fact that, in addition, OCD acceptance of a C-141 report does not relieve the operator of responsibility for compliance with any other federal, state, or local laws and/or regulations.   |



**District I**  
1625 N. French Dr., Hobbs, NM 88240  
Phone:(575) 393-6161 Fax:(575) 393-0720  
**District II**  
811 S. First St., Artesia, NM 88210  
Phone:(575) 748-1283 Fax:(575) 748-9720  
**District III**  
1000 Rio Brazos Rd., Aztec, NM 87410  
Phone:(505) 334-6178 Fax:(505) 334-6170  
**District IV**  
1220 S. St Francis Dr., Santa Fe, NM 87505  
Phone:(505) 476-3470 Fax:(505) 476-3462

State of New Mexico  
Energy, Minerals and Natural Resources  
Oil Conservation Division  
1220 S. St Francis Dr.  
Santa Fe, NM 87505

CONDITIONS  
  
Action 342448

CONDITIONS

|   |  |
|---|--|
| Operator:<br>BTA OIL PRODUCERS, LLC<br>104 S Pecos<br>Midland, TX 79701 | OGRID:<br>260297                                       |
|   | Action Number:<br>342448                               |
|   | Action Type:<br>[NOTIFY] Notification Of Release (NOR) |

CONDITIONS

| Created By | Condition   | Condition Date |
|------------|---|----------------|
| cterhune   | When submitting future reports regarding this release, please submit the calculations used or specific justification for the volumes reported on the initial C-141. | 5/14/2024      |

**District I**  
1625 N. French Dr., Hobbs, NM 88240  
Phone:(575) 393-6161 Fax:(575) 393-0720  
**District II**  
811 S. First St., Artesia, NM 88210  
Phone:(575) 748-1283 Fax:(575) 748-9720  
**District III**  
1000 Rio Brazos Rd., Aztec, NM 87410  
Phone:(505) 334-6178 Fax:(505) 334-6170  
**District IV**  
1220 S. St Francis Dr., Santa Fe, NM 87505  
Phone:(505) 476-3470 Fax:(505) 476-3462

State of New Mexico  
Energy, Minerals and Natural Resources  
Oil Conservation Division  
1220 S. St Francis Dr.  
Santa Fe, NM 87505

QUESTIONS  
  
Action 351847

QUESTIONS

|   |   |
|---|---|
| Operator:<br>BTA OIL PRODUCERS, LLC<br>104 S Pecos<br>Midland, TX 79701 | OGRID:<br>260297  |
|   | Action Number:<br>351847                                |
|   | Action Type:<br>[C-141] Initial C-141 (C-141-v-Initial) |

QUESTIONS

|                      |  |
|----------------------|--|
| <b>Prerequisites</b> |  |
| Incident ID (n#)     | nAPP2413560797   |
| Incident Name        | NAPP2413560797 OGDEN 20509 32 29 FEDERAL COM #006 BATTERY RELEASE @ 30-015-44340 |
| Incident Type        | Produced Water Release   |
| Incident Status      | Initial C-141 Received   |
| Incident Well        | [30-015-44340] OGDEN 20509 32 29 FEDERAL COM #006H                               |

|  |  |
|--|--|
| <b>Location of Release Source</b>              |  |
| Please answer all the questions in this group. |  |
| Site Name                                      | Ogden 20509 32 29 Federal Com #006 Battery Release |
| Date Release Discovered                        | 05/14/2024   |
| Surface Owner                                  | State  |

|  |                        |
|--|------------------------|
| <b>Incident Details</b>  |                        |
| Please answer all the questions in this group.   |                        |
| Incident Type  | Produced Water Release |
| Did this release result in a fire or is the result of a fire   | No                     |
| Did this release result in any injuries  | No                     |
| Has this release reached or does it have a reasonable probability of reaching a watercourse          | No                     |
| Has this release endangered or does it have a reasonable probability of endangering public health    | No                     |
| Has this release substantially damaged or will it substantially damage property or the environment   | No                     |
| Is this release of a volume that is or may with reasonable probability be detrimental to fresh water | No                     |

|  |  |
|--|--|
| <b>Nature and Volume of Release</b>  |  |
| Material(s) released, please answer all that apply below. Any calculations or specific justifications for the volumes provided should be attached to the follow-up C-141 submission. |  |
| Crude Oil Released (bbls) Details  | Not answered.  |
| Produced Water Released (bbls) Details   | Cause: Equipment Failure   Fitting   Produced Water   Released: 59 BBL   Recovered: 59 BBL   Lost: 0 BBL.  |
| Is the concentration of chloride in the produced water >10,000 mg/l  | Yes  |
| Condensate Released (bbls) Details   | Not answered.  |
| Natural Gas Vented (Mcf) Details   | Not answered.  |
| Natural Gas Flared (Mcf) Details   | Not answered.  |
| Other Released Details   | Not answered.  |
| Are there additional details for the questions above (i.e. any answer containing Other, Specify, Unknown, and/or Fire, or any negative lost amounts)                                 | On May 14, 2024, a gauge blowout was discovered which released approximately 59 bbls of produced water into the lined secondary containment structure of the tank battery. The release was fully contained within the battery secondary containment and the fluid was recovered and returned to the battery storage tanks. |

**District I**

1625 N. French Dr., Hobbs, NM 88240  
Phone:(575) 393-6161 Fax:(575) 393-0720

**District II**

811 S. First St., Artesia, NM 88210  
Phone:(575) 748-1283 Fax:(575) 748-9720

**District III**

1000 Rio Brazos Rd., Aztec, NM 87410  
Phone:(505) 334-6178 Fax:(505) 334-6170

**District IV**

1220 S. St Francis Dr., Santa Fe, NM 87505  
Phone:(505) 476-3470 Fax:(505) 476-3462

**State of New Mexico**  
**Energy, Minerals and Natural Resources**  
**Oil Conservation Division**  
**1220 S. St Francis Dr.**  
**Santa Fe, NM 87505**

QUESTIONS, Page 2

Action 351847

**QUESTIONS (continued)**

|   |   |
|---|---|
| Operator:<br>BTA OIL PRODUCERS, LLC<br>104 S Pecos<br>Midland, TX 79701 | OGRID:<br>260297  |
|   | Action Number:<br>351847                                |
|   | Action Type:<br>[C-141] Initial C-141 (C-141-v-Initial) |

**QUESTIONS**

| Nature and Volume of Release (continued)  |  |
|---|--|
| Is this a gas only submission (i.e. only significant Mcf values reported)   | No, according to supplied volumes this does not appear to be a "gas only" report.  |
| Was this a major release as defined by Subsection A of 19.15.29.7 NMAC  | Yes  |
| Reasons why this would be considered a submission for a notification of a major release   | From paragraph A. "Major release" determine using:<br>(1) an unauthorized release of a volume, excluding gases, of 25 barrels or more. |
| With the implementation of the 19.15.27 NMAC (05/25/2021), venting and/or flaring of natural gas (i.e. gas only) are to be submitted on the C-129 form. |  |

**Initial Response**

The responsible party must undertake the following actions immediately unless they could create a safety hazard that would result in injury.

|  |               |
|--|---------------|
| The source of the release has been stopped   | True          |
| The impacted area has been secured to protect human health and the environment                                     | True          |
| Released materials have been contained via the use of berms or dikes, absorbent pads, or other containment devices | True          |
| All free liquids and recoverable materials have been removed and managed appropriately                             | True          |
| If all the actions described above have not been undertaken, explain why   | Not answered. |

Per Paragraph (4) of Subsection B of 19.15.29.8 NMAC the responsible party may commence remediation immediately after discovery of a release. If remediation has begun, please prepare and attach a narrative of actions to date in the follow-up C-141 submission. If remedial efforts have been successfully completed or if the release occurred within a lined containment area (see Subparagraph (a) of Paragraph (5) of Subsection A of 19.15.29.11 NMAC), please prepare and attach all information needed for closure evaluation in the follow-up C-141 submission.

I hereby certify that the information given above is true and complete to the best of my knowledge and understand that pursuant to OCD rules and regulations all operators are required to report and/or file certain release notifications and perform corrective actions for releases which may endanger public health or the environment. The acceptance of a C-141 report by the OCD does not relieve the operator of liability should their operations have failed to adequately investigate and remediate contamination that pose a threat to groundwater, surface water, human health or the environment. In addition, OCD acceptance of a C-141 report does not relieve the operator of responsibility for compliance with any other federal, state, or local laws and/or regulations.

|  |   |
|--|---|
| I hereby agree and sign off to the above statement | Name: Chuck Terhune<br>Email: rramos@btaoil.com<br>Date: 06/07/2024 |
|--|---|

**District I**  
1625 N. French Dr., Hobbs, NM 88240  
Phone:(575) 393-6161 Fax:(575) 393-0720

**District II**  
811 S. First St., Artesia, NM 88210  
Phone:(575) 748-1283 Fax:(575) 748-9720

**District III**  
1000 Rio Brazos Rd., Aztec, NM 87410  
Phone:(505) 334-6178 Fax:(505) 334-6170

**District IV**  
1220 S. St Francis Dr., Santa Fe, NM 87505  
Phone:(505) 476-3470 Fax:(505) 476-3462

State of New Mexico  
Energy, Minerals and Natural Resources  
Oil Conservation Division  
1220 S. St Francis Dr.  
Santa Fe, NM 87505

QUESTIONS, Page 3

Action 351847

QUESTIONS (continued)

|   |   |
|---|---|
| Operator:<br>BTA OIL PRODUCERS, LLC<br>104 S Pecos<br>Midland, TX 79701 | OGRID:<br>260297  |
|   | Action Number:<br>351847                                |
|   | Action Type:<br>[C-141] Initial C-141 (C-141-v-Initial) |

QUESTIONS

Site Characterization

Please answer all the questions in this group (only required when seeking remediation plan approval and beyond). This information must be provided to the appropriate district office no later than 90 days after the release discovery date.

|  |                                |
|--|--------------------------------|
| What is the shallowest depth to groundwater beneath the area affected by the release in feet below ground surface (ft bgs) | Between 51 and 75 (ft.)        |
| What method was used to determine the depth to ground water  | NM OSE iWaters Database Search |
| Did this release impact groundwater or surface water   | No                             |

What is the minimum distance, between the closest lateral extents of the release and the following surface areas:

|   |                                |
|---|--------------------------------|
| A continuously flowing watercourse or any other significant watercourse   | Between 1 and 5 (mi.)          |
| Any lakebed, sinkhole, or playa lake (measured from the ordinary high-water mark)   | Between 1 and 5 (mi.)          |
| An occupied permanent residence, school, hospital, institution, or church   | Between 1 and 5 (mi.)          |
| A spring or a private domestic fresh water well used by less than five households for domestic or stock watering purposes | Between 1 and 5 (mi.)          |
| Any other fresh water well or spring  | Between 1000 (ft.) and ½ (mi.) |
| Incorporated municipal boundaries or a defined municipal fresh water well field   | Between 1 and 5 (mi.)          |
| A wetland   | Between 1000 (ft.) and ½ (mi.) |
| A subsurface mine   | Greater than 5 (mi.)           |
| An (non-karst) unstable area  | Greater than 5 (mi.)           |
| Categorize the risk of this well / site being in a karst geology  | High                           |
| A 100-year floodplain   | Greater than 5 (mi.)           |
| Did the release impact areas not on an exploration, development, production, or storage site                              | No                             |

Remediation Plan

Please answer all the questions that apply or are indicated. This information must be provided to the appropriate district office no later than 90 days after the release discovery date.

|   |    |
|---|----|
| Requesting a remediation plan approval with this submission | No |
|---|----|

The OCD recognizes that proposed remediation measures may have to be minimally adjusted in accordance with the physical realities encountered during remediation. If the responsible party has any need to significantly deviate from the remediation plan proposed, then it should consult with the division to determine if another remediation plan submission is required.



**District I**  
1625 N. French Dr., Hobbs, NM 88240  
Phone:(575) 393-6161 Fax:(575) 393-0720  
**District II**  
811 S. First St., Artesia, NM 88210  
Phone:(575) 748-1283 Fax:(575) 748-9720  
**District III**  
1000 Rio Brazos Rd., Aztec, NM 87410  
Phone:(505) 334-6178 Fax:(505) 334-6170  
**District IV**  
1220 S. St Francis Dr., Santa Fe, NM 87505  
Phone:(505) 476-3470 Fax:(505) 476-3462

State of New Mexico  
Energy, Minerals and Natural Resources  
Oil Conservation Division  
1220 S. St Francis Dr.  
Santa Fe, NM 87505

CONDITIONS  
  
Action 351847

CONDITIONS

|   |   |
|---|---|
| Operator:<br>BTA OIL PRODUCERS, LLC<br>104 S Pecos<br>Midland, TX 79701 | OGRID:<br>260297  |
|   | Action Number:<br>351847                                |
|   | Action Type:<br>[C-141] Initial C-141 (C-141-v-Initial) |

CONDITIONS

|               |           |                |
|---------------|-----------|----------------|
| Created By    | Condition | Condition Date |
| scott.rodgers | None      | 6/7/2024       |

\*\*\*\*\* LIQUID SPILLS - VOLUME CALCULATIONS \*\*\*\*\*

Release Location Name: Ogden 6H Battery Release Date of Release: 5/14/2024

If the leak/spill is associated with production equipment, i.e. - wellhead, stuffing box,  
flowline, tank battery, production vessel, transfer pump, or storage tank place an "X" here: ☒

Input Data:

OIL:

WATER:

If spill volumes from measurement, i.e. metering, tank volumes, etc. are known enter the volumes here:

BBL

59.0000 BBL

If "known" spill volumes are given, input data for the following "Area Calculations" is optional. The above will override the calculated volumes.

| Total Area Calculations |          |        |                |         |                      | Standing Liquid Calculations |                   |              |         |          |   |         |       |
|-------------------------|----------|--------|----------------|---------|----------------------|------------------------------|-------------------|--------------|---------|----------|---|---------|-------|
| Total Surface Area      | width    | length | wet soil depth | oil (%) | Standing Liquid Area | width                        | length            | liquid depth | oil (%) |          |   |         |       |
| Rectangle Area #1       | 35.00 ft | X      | 143.00 ft      | X       | 0.00 in              | 0.00%                        | Rectangle Area #1 | 40.00 ft     | X       | 50.00 ft | X | 2.00 in | 0.00% |
| Rectangle Area #2       | 0.00 ft  | X      | 0.00 ft        | X       | 0.00 in              | 0.00%                        | Rectangle Area #2 | 0.00 ft      | X       | 0.00 ft  | X | 0.00 in | 0.00% |
| Rectangle Area #3       | 0.00 ft  | X      | 0.00 ft        | X       | 0.00 in              | 0.00%                        | Rectangle Area #3 | 0.00 ft      | X       | 0.00 ft  | X | 0.00 in | 0.00% |
| Rectangle Area #4       | 0.00 ft  | X      | 0.00 ft        | X       | 0.00 in              | 0.00%                        | Rectangle Area #4 | 0.00 ft      | X       | 0.00 ft  | X | 0.00 in | 0.00% |
| Rectangle Area #5       | 0.00 ft  | X      | 0.00 ft        | X       | 0.00 in              | 0.00%                        | Rectangle Area #5 | 0.00 ft      | X       | 0.00 ft  | X | 0.00 in | 0.00% |
| Rectangle Area #6       | 0.00 ft  | X      | 0.00 ft        | X       | 0.00 in              | 0.00%                        | Rectangle Area #6 | 0.00 ft      | X       | 0.00 ft  | X | 0.00 in | 0.00% |
| Rectangle Area #7       | 0.00 ft  | X      | 0.00 ft        | X       | 0.00 in              | 0.00%                        | Rectangle Area #7 | 0.00 ft      | X       | 0.00 ft  | X | 0.00 in | 0.00% |
| Rectangle Area #8       | 0.00 ft  | X      | 0.00 ft        | X       | 0.00 in              | 0.00%                        | Rectangle Area #8 | 0.00 ft      | X       | 0.00 ft  | X | 0.00 in | 0.00% |

production system leak - DAILY PRODUCTION DATA REQUIRED

Average Daily Production:

Oil

Water

BBL

BBL

Did leak occur before the separator?:

☐ YES

☒ N/A (place an "X")

Amount of Free Liquid Recovered:

59 BBL

okay

Percentage of Oil in Free Liquid Recovered:

0.00%

(percentage)

Liquid holding factor \*:

0.00 gal per gal

Use the following when the spill wets the grains of the soil.

Use the following when the liquid completely fills the pore space of the soil.

\* sand = .08 gallon liquid per gallon volume of soil.

Occurs when the spill soaked soil is contained by barriers, natural (or not).

\* gravelly (caliche) loam = .14 gallon liquid per gallon volume of soil.

\* gravelly (caliche) loam = .25 gallon liquid per gallon volume of soil.

\* sandy clay loam soil = .14 gallon liquid per gallon volume of soil.

\* sandy loam = .5 gallon liquid per gallon volume of soil.

\* clay loam = .16 gallon liquid per gallon volume of soil.

Saturated Soil Volume Calculations:

Total Solid/Liquid Volume:

5,005 sq. ft.

Estimated Volumes Spilled

Liquid in Soil:

Free Liquid:

Totals:

0.0 BBL

59.4 BBL

59.4 BBL

Total Spill Liquid:

59.0 BBL

Recovered Volumes

Estimated oil recovered:

Estimated water recovered:

0.0 BBL

59.0 BBL

check - okay

check - okay

Free Liquid Volume Calculations:

Total Free Liquid Volume:

2,000 sq. ft.

Estimated Production Volumes Lost

Estimated Production Spilled:

59.0 BBL

Estimated Surface Damage

Surface Area:

Surface Area:

5,005 sq. ft.

.1149 acre

Estimated Weights, and Volumes

Saturated Soil =

Total Liquid =

lbs

59 BBL

cu.ft.

2,478 gallon

cu.yds.

20,617 lbs

Spill Calculator.xlsx

|                |  |
|----------------|--|
| Incident ID    |  |
| District RP    |  |
| Facility ID    |  |
| Application ID |  |

Site Assessment/Characterization

This information must be provided to the appropriate district office no later than 90 days after the release discovery date.

|   |  |
|---|--|
| What is the shallowest depth to groundwater beneath the area affected by the release?   | _____ (ft bgs)   |
| Did this release impact groundwater or surface water?   | <input type="checkbox"/> Yes <input type="checkbox"/> No |
| Are the lateral extents of the release within 300 feet of a continuously flowing watercourse or any other significant watercourse?  | <input type="checkbox"/> Yes <input type="checkbox"/> No |
| Are the lateral extents of the release within 200 feet of any lakebed, sinkhole, or playa lake (measured from the ordinary high-water mark)?  | <input type="checkbox"/> Yes <input type="checkbox"/> No |
| Are the lateral extents of the release within 300 feet of an occupied permanent residence, school, hospital, institution, or church?  | <input type="checkbox"/> Yes <input type="checkbox"/> No |
| Are the lateral extents of the release within 500 horizontal feet of a spring or a private domestic fresh water well used by less than five households for domestic or stock watering purposes? | <input type="checkbox"/> Yes <input type="checkbox"/> No |
| Are the lateral extents of the release within 1000 feet of any other fresh water well or spring?  | <input type="checkbox"/> Yes <input type="checkbox"/> No |
| Are the lateral extents of the release within incorporated municipal boundaries or within a defined municipal fresh water well field?   | <input type="checkbox"/> Yes <input type="checkbox"/> No |
| Are the lateral extents of the release within 300 feet of a wetland?  | <input type="checkbox"/> Yes <input type="checkbox"/> No |
| Are the lateral extents of the release overlying a subsurface mine?   | <input type="checkbox"/> Yes <input type="checkbox"/> No |
| Are the lateral extents of the release overlying an unstable area such as karst geology?  | <input type="checkbox"/> Yes <input type="checkbox"/> No |
| Are the lateral extents of the release within a 100-year floodplain?  | <input type="checkbox"/> Yes <input type="checkbox"/> No |
| Did the release impact areas <b>not</b> on an exploration, development, production, or storage site?  | <input type="checkbox"/> Yes <input type="checkbox"/> No |

Attach a comprehensive report (electronic submittals in .pdf format are preferred) demonstrating the lateral and vertical extents of soil contamination associated with the release have been determined. Refer to 19.15.29.11 NMAC for specifics.

|   |
|---|
| <p><b>Characterization Report Checklist:</b> <i>Each of the following items must be included in the report.</i></p> <div><input type="checkbox"/> Scaled site map showing impacted area, surface features, subsurface features, delineation points, and monitoring wells.<input type="checkbox"/> Field data<input type="checkbox"/> Data table of soil contaminant concentration data<input type="checkbox"/> Depth to water determination<input type="checkbox"/> Determination of water sources and significant watercourses within ½-mile of the lateral extents of the release<input type="checkbox"/> Boring or excavation logs<input type="checkbox"/> Photographs including date and GIS information<input type="checkbox"/> Topographic/Aerial maps<input type="checkbox"/> Laboratory data including chain of custody</div> |
|---|

If the site characterization report does not include completed efforts at remediation of the release, the report must include a proposed remediation plan. That plan must include the estimated volume of material to be remediated, the proposed remediation technique, proposed sampling plan and methods, anticipated timelines for beginning and completing the remediation. The closure criteria for a release are contained in Table 1 of 19.15.29.12 NMAC, however, use of the table is modified by site- and release-specific parameters.

State of New Mexico  
Oil Conservation Division

Page 4

|                |  |
|----------------|--|
| Incident ID    |  |
| District RP    |  |
| Facility ID    |  |
| Application ID |  |

I hereby certify that the information given above is true and complete to the best of my knowledge and understand that pursuant to OCD rules and regulations all operators are required to report and/or file certain release notifications and perform corrective actions for releases which may endanger public health or the environment. The acceptance of a C-141 report by the OCD does not relieve the operator of liability should their operations have failed to adequately investigate and remediate contamination that pose a threat to groundwater, surface water, human health or the environment. In addition, OCD acceptance of a C-141 report does not relieve the operator of responsibility for compliance with any other federal, state, or local laws and/or regulations.

Printed Name: \_\_\_\_\_ Title: \_\_\_\_\_

Signature: \_\_\_\_\_\_\_\_\_\_ Date: \_\_\_\_\_

email: \_\_\_\_\_ Telephone: \_\_\_\_\_

**OCD Only**

Received by: \_\_\_\_\_ Date: \_\_\_\_\_



|                |  |
|----------------|--|
| Incident ID    |  |
| District RP    |  |
| Facility ID    |  |
| Application ID |  |

## Closure

The responsible party must attach information demonstrating they have complied with all applicable closure requirements and any conditions or directives of the OCD. This demonstration should be in the form of a comprehensive report (electronic submittals in .pdf format are preferred) including a scaled site map, sampling diagrams, relevant field notes, photographs of any excavation prior to backfilling, laboratory data including chain of custody documents of final sampling, and a narrative of the remedial activities. Refer to 19.15.29.12 NMAC.

**Closure Report Attachment Checklist:** *Each of the following items must be included in the closure report.*

- ☐ A scaled site and sampling diagram as described in 19.15.29.11 NMAC
- ☐ Photographs of the remediated site prior to backfill or photos of the liner integrity if applicable (Note: appropriate OCD District office must be notified 2 days prior to liner inspection)
- ☐ Laboratory analyses of final sampling (Note: appropriate ODC District office must be notified 2 days prior to final sampling)
- ☐ Description of remediation activities

I hereby certify that the information given above is true and complete to the best of my knowledge and understand that pursuant to OCD rules and regulations all operators are required to report and/or file certain release notifications and perform corrective actions for releases which may endanger public health or the environment. The acceptance of a C-141 report by the OCD does not relieve the operator of liability should their operations have failed to adequately investigate and remediate contamination that pose a threat to groundwater, surface water, human health or the environment. In addition, OCD acceptance of a C-141 report does not relieve the operator of responsibility for compliance with any other federal, state, or local laws and/or regulations. The responsible party acknowledges they must substantially restore, reclaim, and re-vegetate the impacted surface area to the conditions that existed prior to the release or their final land use in accordance with 19.15.29.13 NMAC including notification to the OCD when reclamation and re-vegetation are complete.

Printed Name: \_\_\_\_\_ Title: \_\_\_\_\_

Signature:  \_\_\_\_\_ Date: \_\_\_\_\_

email: \_\_\_\_\_ Telephone: \_\_\_\_\_

**OCD Only**

Received by: \_\_\_\_\_ Date: \_\_\_\_\_

Closure approval by the OCD does not relieve the responsible party of liability should their operations have failed to adequately investigate and remediate contamination that poses a threat to groundwater, surface water, human health, or the environment nor does not relieve the responsible party of compliance with any other federal, state, or local laws and/or regulations.

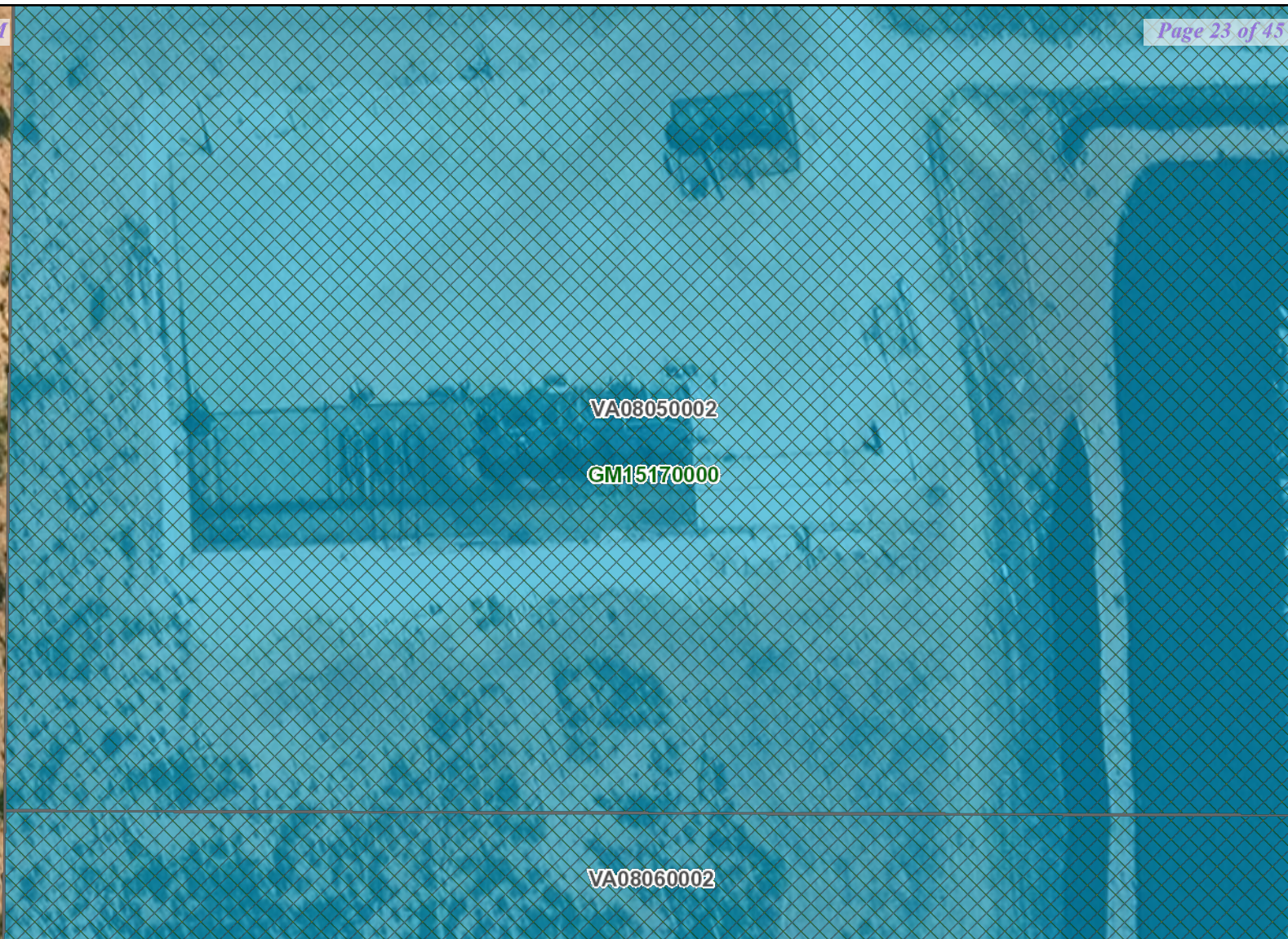
Closure Approved by: \_\_\_\_\_ Date: \_\_\_\_\_

Printed Name: \_\_\_\_\_ Title: \_\_\_\_\_

## **APPENDIX B**

### **Site Characterization Data**





## New Mexico State Land Office - Land Status

0 0.01 0.01 0.02  
mi



**New Mexico State Land Office**

**Disclaimer:**  
The New Mexico State Land Office assumes no responsibility or liability for, or in connection with the accuracy, reliability or use of the information provided herein with respect to State Land Office data or data from other sources.

Data pertaining to New Mexico State Trust Lands are provisional and subject to revision, and do not constitute an official record of title. Official records may be reviewed at the New Mexico State Land Office in Santa Fe, New Mexico.

Released to Imaging: 8/5/2024 4:24:35 PM  
Map Created: 7/18/2024



Oil and Gas Leasing Restrictions



Energy Leases



Agricultural Leases



Oil and Gas Leases



Minerals Leases



Commercial Leases

New Mexico State Trust Lands



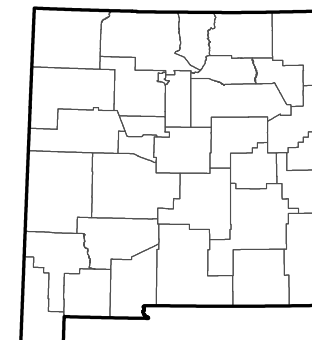
Subsurface Estate



Surface Estate



Both Estates







# New Mexico Office of the State Engineer

## Water Column/Average Depth to Water

(A CLW##### in the POD suffix indicates the POD has been replaced & no longer serves a water right file.)

(R=POD has been replaced,  
O=orphaned,  
C=the file is closed)

(quarters are 1=NW 2=NE 3=SW 4=SE)

(quarters are smallest to largest)

(NAD83 UTM in meters)

(In feet)

| POD Number                   | POD Sub-Code | basin | County | Q 64 | Q 16 | Q 4 | Sec | Tws | Rng | X      | Y       | Distance | Depth Well | Depth Water | Water Column |
|------------------------------|--------------|-------|--------|------|------|-----|-----|-----|-----|--------|---------|----------|------------|-------------|--------------|
| <a href="#">C 04037 POD1</a> | C            |       | ED     | 4    | 3    | 2   | 31  | 23S | 28E | 582576 | 3569872 | 555      | 99         | 60          | 39           |

Average Depth to Water: **60 feet**

Minimum Depth: **60 feet**

Maximum Depth: **60 feet**

Record Count: 1

### UTM NAD83 Radius Search (in meters):

**Easting (X):** 583129

**Northing (Y):** 3569820

**Radius:** 800

The data is furnished by the NMOSE/ISC and is accepted by the recipient with the expressed understanding that the OSE/ISC make no warranties, expressed or implied, concerning the accuracy, completeness, reliability, usability, or suitability for any particular purpose of the data.





# New Mexico Office of the State Engineer

## Point of Diversion Summary

(quarters are 1=NW 2=NE 3=SW 4=SE)

(quarters are smallest to largest)

(NAD83 UTM in meters)

|                 |                   |                   |            |            |            |          |          |
|-----------------|-------------------|-------------------|------------|------------|------------|----------|----------|
| <b>Well Tag</b> | <b>POD Number</b> | <b>Q64 Q16 Q4</b> | <b>Sec</b> | <b>Tws</b> | <b>Rng</b> | <b>X</b> | <b>Y</b> |
| C               | 04037 POD1        | 4                 | 3          | 2          | 31         | 23S      | 28E      |
|                 |                   |                   |            |            |            | 582576   | 3569872  |

**Driller License:** 1348 **Driller Company:** TAYLOR WATER WELL SERVICE

**Driller Name:** TAYLOR, CLINTON E.

**Drill Start Date:** 07/17/2017

**Drill Finish Date:** 07/18/2017

**Plug Date:**

**Log File Date:** 08/28/2017

**PCW Rcv Date:**

**Source:** Shallow

**Pump Type:**

**Pipe Discharge Size:**

**Estimated Yield:** 8 GPM

**Casing Size:** 4.50

**Depth Well:** 99 feet

**Depth Water:** 60 feet

**Water Bearing Stratifications:**

| Top | Bottom | Description              |
|-----|--------|--------------------------|
| 60  | 82     | Shale/Mudstone/Siltstone |
| 82  | 99     | Shale/Mudstone/Siltstone |

**Casing Perforations:**

| Top | Bottom |
|-----|--------|
| 59  | 99     |

The data is furnished by the NMOSE/ISC and is accepted by the recipient with the expressed understanding that the OSE/ISC make no warranties, expressed or implied, concerning the accuracy, completeness, reliability, usability, or suitability for any particular purpose of the data.

7/18/24 1:09 PM

Page 1 of 1

POD SUMMARY - C 04037 POD1



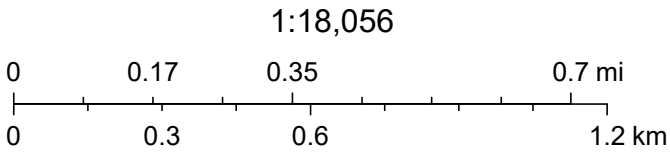
# NM OCD - Permian Basin Karst Areas



7/18/2024, 8:41:02 AM

Karst Occurrence Potential

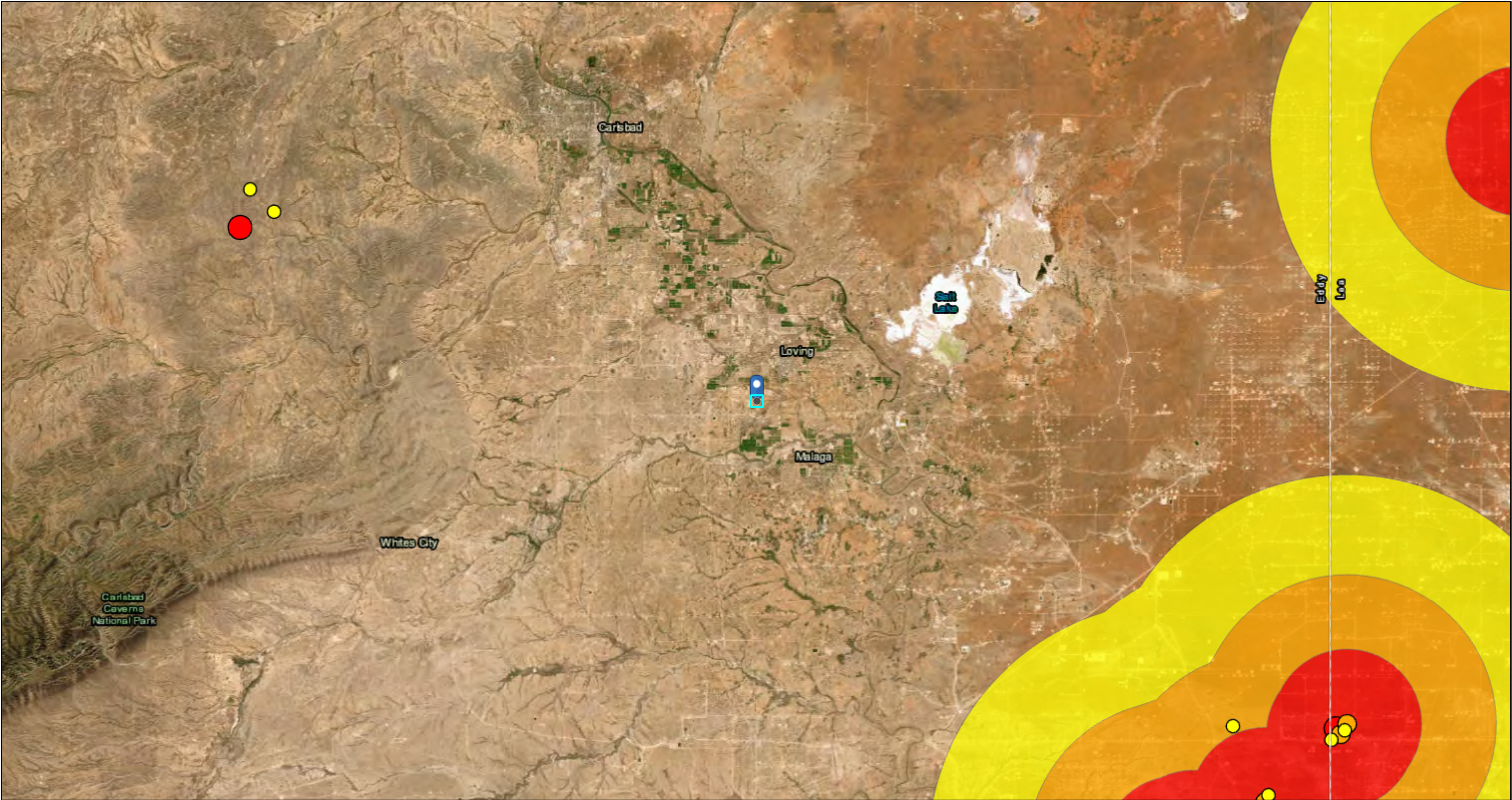
- High
- Medium



BLM, OCD, New Mexico Tech, Esri, HERE, Garmin, iPC, Maxar



# NM OCD - Unstable Area (non-karst)



7/18/2024, 8:44:15 AM

Seismic Response 3.0 to 3.4

3 mi.

6 mi.

10 mi.

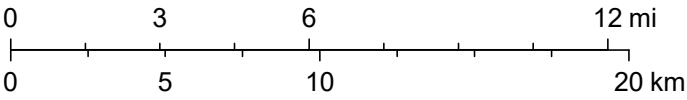
M2.5+ Earthquakes (2021+)

2.5 - 2.9

3.0 - 3.4

3.5 and above

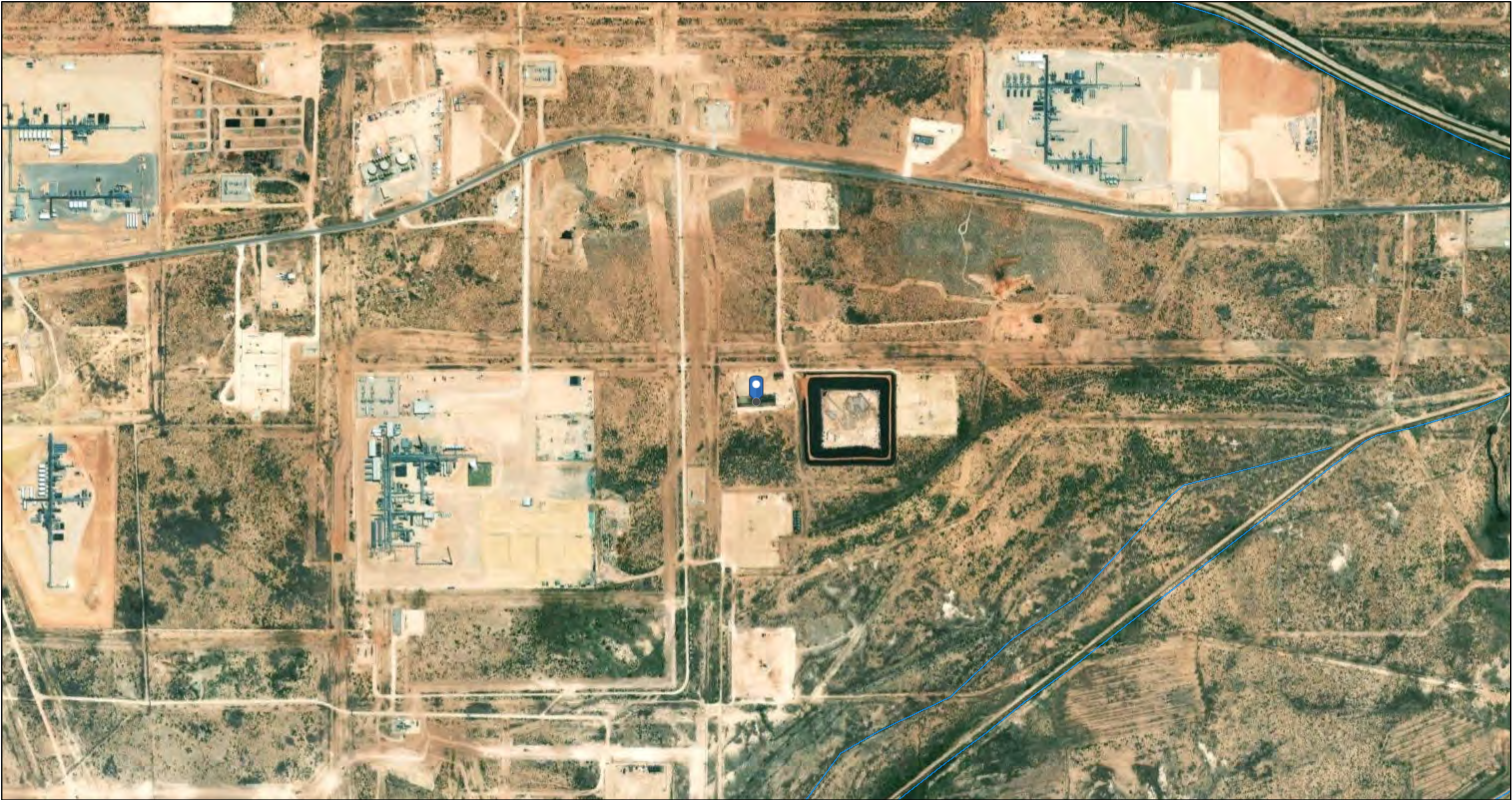
1:288,895



Oil Conservation Division (OCD), Energy, Minerals and Natural Resources Department (EMNRD), Esri, HERE, Garmin, Earthstar Geographics

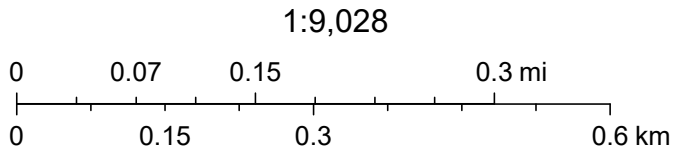


# NM OCD - Waterbodies Map



7/18/2024, 8:36:52 AM

— OSE Streams



Esri, HERE, Garmin, IPC, Maxar, NM OSE



# National Flood Hazard Layer FIRMMette



104°7'23"W 32°15'58"N



0 250 500 1,000 1,500 2,000 Feet

1:6,000

104°6'45"W 32°15'28"N

Released to Imaging: 8/5/2024 4:24:35 PM

Basemap Imagery Source: USGS National Map 2023

## Legend

SEE FIS REPORT FOR DETAILED LEGEND AND INDEX MAP FOR FIRM PANEL LAYOUT

|                             |  |   |
|-----------------------------|--|---|
| SPECIAL FLOOD HAZARD AREAS  |  | Without Base Flood Elevation (BFE)<br>Zone A, V, A99  |
|                             |  | With BFE or Depth Zone AE, AO, AH, VE, AR   |
|                             |  | Regulatory Floodway   |
| OTHER AREAS OF FLOOD HAZARD |  | 0.2% Annual Chance Flood Hazard, Areas of 1% annual chance flood with average depth less than one foot or with drainage areas of less than one square mile Zone X |
|                             |  | Future Conditions 1% Annual Chance Flood Hazard Zone X  |
|                             |  | Area with Reduced Flood Risk due to Levee. See Notes. Zone X  |
|                             |  | Area with Flood Risk due to Levee Zone D  |
| OTHER AREAS                 |  | NO SCREEN Area of Minimal Flood Hazard Zone X   |
|                             |  | Effective LOMRs   |
|                             |  | Area of Undetermined Flood Hazard Zone D  |
| GENERAL STRUCTURES          |  | Channel, Culvert, or Storm Sewer  |
|                             |  | Levee, Dike, or Floodwall   |
| OTHER FEATURES              |  | 20.2 Cross Sections with 1% Annual Chance   |
|                             |  | 17.5 Water Surface Elevation  |
|                             |  | Coastal Transect  |
|                             |  | Base Flood Elevation Line (BFE)   |
|                             |  | Limit of Study  |
|                             |  | Jurisdiction Boundary   |
|                             |  | Coastal Transect Baseline   |
| MAP PANELS                  |  | Digital Data Available  |
|                             |  | No Digital Data Available   |
|                             |  | Unmapped  |



The pin displayed on the map is an approximate point selected by the user and does not represent an authoritative property location.

This map complies with FEMA's standards for the use of digital flood maps if it is not void as described below. The basemap shown complies with FEMA's basemap accuracy standards

The flood hazard information is derived directly from the authoritative NFHL web services provided by FEMA. This map was exported on 7/18/2024 at 3:19 PM and does not reflect changes or amendments subsequent to this date and time. The NFHL and effective information may change or become superseded by new data over time.

This map image is void if the one or more of the following map elements do not appear: basemap imagery, flood zone labels, legend, scale bar, map creation date, community identifiers, FIRM panel number, and FIRM effective date. Map images for unmapped and unmodernized areas cannot be used for regulatory purposes.

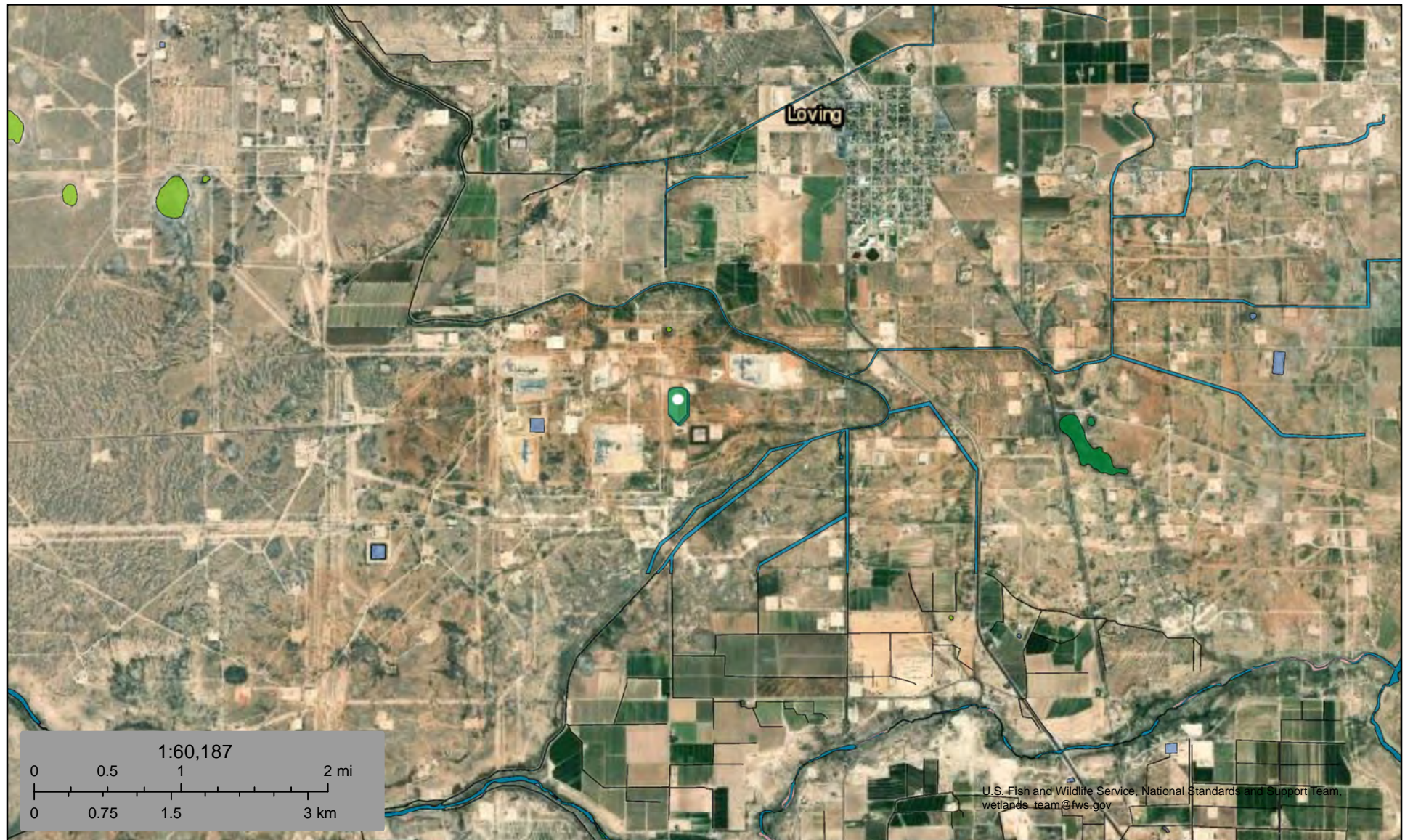




U.S. Fish and Wildlife Service

## National Wetlands Inventory

Ogden #006H



June 7, 2024

## Wetlands

- Estuarine and Marine Deepwater
- Estuarine and Marine Wetland

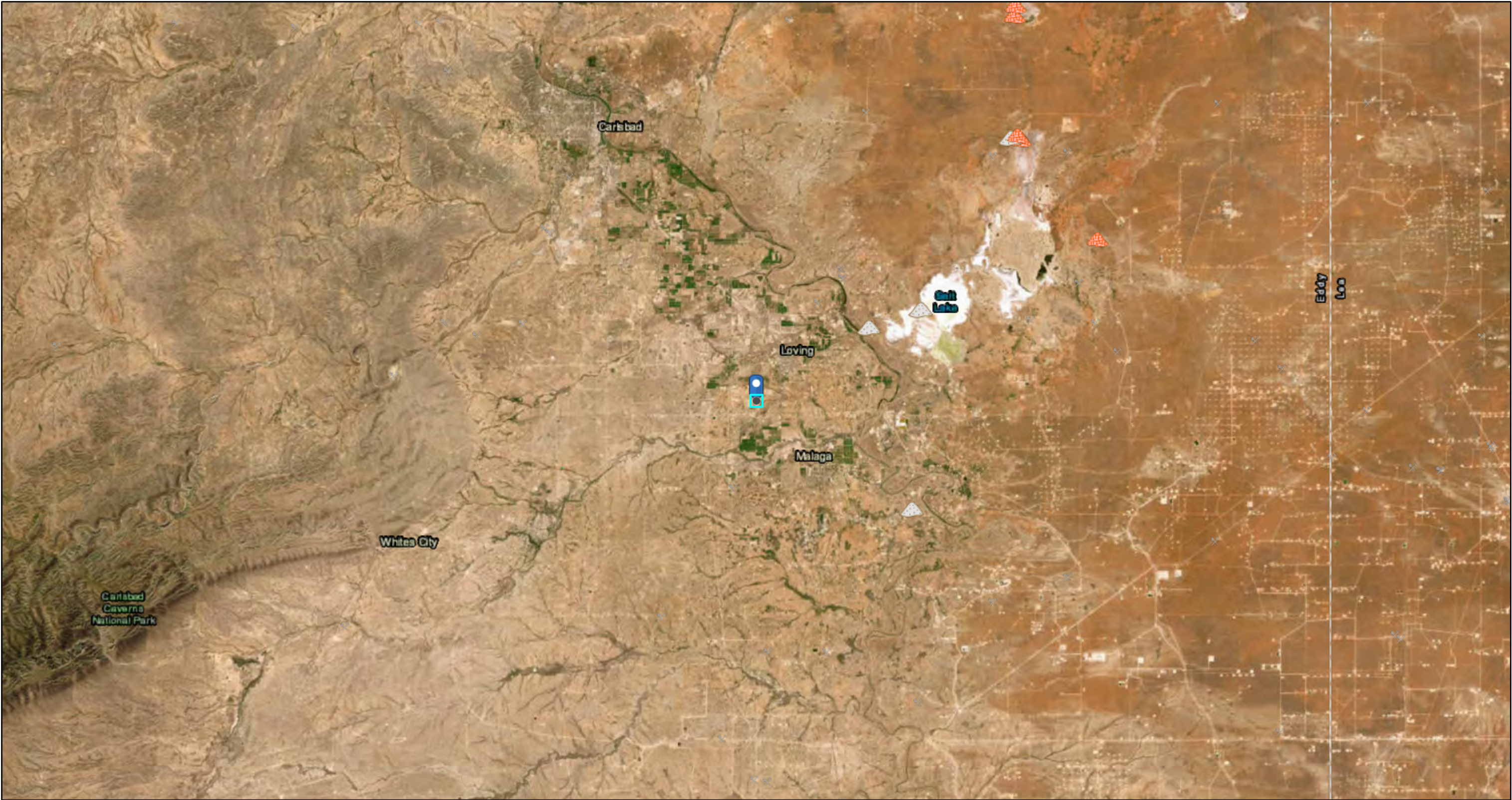
- Freshwater Emergent Wetland
- Freshwater Forested/Shrub Wetland
- Freshwater Pond

- Lake
- Other
- Riverine

This map is for general reference only. The US Fish and Wildlife Service is not responsible for the accuracy or currentness of the base data shown on this map. All wetlands related data should be used in accordance with the layer metadata found on the Wetlands Mapper web site.



# Active Mines in New Mexico



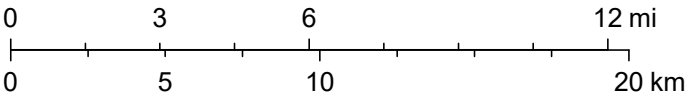
7/18/2024, 2:01:25 PM

1:288,895

Registered Mines

Aggregate, Stone etc. Potash

Aggregate, Stone etc. Aggregate, Stone etc. Salt



Esri, HERE, Garmin, Earthstar Geographics



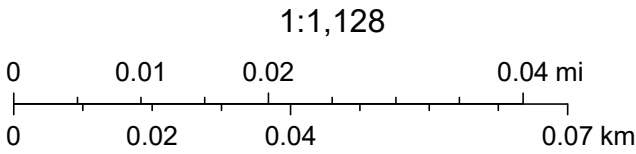
# NM OCD - Land Ownership Map



7/18/2024, 8:35:32 AM

Land Ownership

- P
- S



U.S. BLM, Maxar, Microsoft, Esri, HERE, Garmin, iPC



## **APPENDIX C**

### **Regulatory Correspondence**

**District I**  
1625 N. French Dr., Hobbs, NM 88240  
Phone:(575) 393-6161 Fax:(575) 393-0720  
**District II**  
811 S. First St., Artesia, NM 88210  
Phone:(575) 748-1283 Fax:(575) 748-9720  
**District III**  
1000 Rio Brazos Rd., Aztec, NM 87410  
Phone:(505) 334-6178 Fax:(505) 334-6170  
**District IV**  
1220 S. St Francis Dr., Santa Fe, NM 87505  
Phone:(505) 476-3470 Fax:(505) 476-3462

State of New Mexico  
Energy, Minerals and Natural Resources  
Oil Conservation Division  
1220 S. St Francis Dr.  
Santa Fe, NM 87505

QUESTIONS  
  
Action 348554

QUESTIONS

|   |  |
|---|--|
| Operator:<br>BTA OIL PRODUCERS, LLC<br>104 S Pecos<br>Midland, TX 79701 | OGRID:<br>260297   |
|   | Action Number:<br>348554   |
|   | Action Type:<br>[NOTIFY] Notification Of Liner Inspection (C-141L) |

QUESTIONS

|                  |  |
|------------------|--|
| Prerequisites    |  |
| Incident ID (n#) | nAPP2413560797   |
| Incident Name    | NAPP2413560797 OGDEN 20509 32 29 FEDERAL COM #006 BATTERY RELEASE @ 30-015-44340 |
| Incident Type    | Produced Water Release   |
| Incident Status  | Notification Accepted  |
| Incident Well    | [30-015-44340] OGDEN 20509 32 29 FEDERAL COM #006H                               |

|                            |  |
|----------------------------|--|
| Location of Release Source |  |
| Site Name                  | Ogden 20509 32 29 Federal Com #006 Battery Release |
| Date Release Discovered    | 05/14/2024   |
| Surface Owner              | State  |

|   |  |
|---|--|
| Liner Inspection Event Information  |  |
| Please answer all the questions in this group.  |  |
| What is the liner inspection surface area in square feet  | 18,000   |
| Have all the impacted materials been removed from the liner   | Yes  |
| Liner inspection date pursuant to Subparagraph (a) of Paragraph (5) of Subsection A of 19.15.29.11 NMAC | 05/31/2024   |
| Time liner inspection will commence   | 11:00 AM   |
| Please provide any information necessary for observers to liner inspection                              | Adrian Garcia of Tetra Tech will perform the Liner inspection, contactable at 432-288-7783 |
| Please provide any information necessary for navigation to liner inspection site                        | Site i 0.3 miles south of Bounds Road at 32.262016° , -104.117403°                         |

**District I**  
1625 N. French Dr., Hobbs, NM 88240  
Phone:(575) 393-6161 Fax:(575) 393-0720  
**District II**  
811 S. First St., Artesia, NM 88210  
Phone:(575) 748-1283 Fax:(575) 748-9720  
**District III**  
1000 Rio Brazos Rd., Aztec, NM 87410  
Phone:(505) 334-6178 Fax:(505) 334-6170  
**District IV**  
1220 S. St Francis Dr., Santa Fe, NM 87505  
Phone:(505) 476-3470 Fax:(505) 476-3462

**State of New Mexico**  
**Energy, Minerals and Natural Resources**  
**Oil Conservation Division**  
**1220 S. St Francis Dr.**  
**Santa Fe, NM 87505**

CONDITIONS  
  
Action 348554

CONDITIONS

|   |  |
|---|--|
| Operator:<br>BTA OIL PRODUCERS, LLC<br>104 S Pecos<br>Midland, TX 79701 | OGRID:<br>260297   |
|   | Action Number:<br>348554   |
|   | Action Type:<br>[NOTIFY] Notification Of Liner Inspection (C-141L) |

CONDITIONS

| Created By | Condition  | Condition Date |
|------------|--|----------------|
| cterhune   | Failure to notify the OCD of liner inspections including any changes in date/time per the requirements of 19.15.29.11.A(5)(a)(ii) NMAC, may result in the inspection not being accepted. | 5/28/2024      |

## **APPENDIX D**

### **Photographic Documentation**





|  |             |   |           |
|--|-------------|---|-----------|
| TETRA TECH, INC.<br>PROJECT NO.<br>212C-MD-03500 | DESCRIPTION | Site Signage. Ogden South Battery, Ogden 20509 32-29 6H and location information. | 1         |
|  | SITE NAME   | OGDEN 20509 32-29 FEDERAL COM #006H   | 5/31/2024 |





|  |             |   |           |
|--|-------------|---|-----------|
| TETRA TECH, INC.<br>PROJECT NO.<br>212C-MD-03500 | DESCRIPTION | View south. Current lined containment area conditions;<br>no rips, holes or tears observed. | 2         |
|  | SITE NAME   | OGDEN 20509 32-29 FEDERAL COM #006H   | 5/31/2024 |





|  |             |   |           |
|--|-------------|---|-----------|
| TETRA TECH, INC.<br>PROJECT NO.<br>212C-MD-03500 | DESCRIPTION | View east northeast. Current lined containment area conditions; no rips, holes or tears observed. | 3         |
|  | SITE NAME   | OGDEN 20509 32-29 FEDERAL COM #006H   | 5/31/2024 |

**District I**  
1625 N. French Dr., Hobbs, NM 88240  
Phone:(575) 393-6161 Fax:(575) 393-0720  
**District II**  
811 S. First St., Artesia, NM 88210  
Phone:(575) 748-1283 Fax:(575) 748-9720  
**District III**  
1000 Rio Brazos Rd., Aztec, NM 87410  
Phone:(505) 334-6178 Fax:(505) 334-6170  
**District IV**  
1220 S. St Francis Dr., Santa Fe, NM 87505  
Phone:(505) 476-3470 Fax:(505) 476-3462

State of New Mexico  
Energy, Minerals and Natural Resources  
Oil Conservation Division  
1220 S. St Francis Dr.  
Santa Fe, NM 87505

QUESTIONS  
  
Action 366408

QUESTIONS

|   |                |
|---|----------------|
| Operator:<br>BTA OIL PRODUCERS, LLC<br>104 S Pecos<br>Midland, TX 79701     | OGRID:         |
|   | 260297         |
|   | Action Number: |
|   | 366408         |
| Action Type:<br>[C-141] Remediation Closure Request C-141 (C-141-v-Closure) |                |

QUESTIONS

|                  |  |
|------------------|--|
| Prerequisites    |  |
| Incident ID (n#) | nAPP2413560797   |
| Incident Name    | NAPP2413560797 OGDEN 20509 32 29 FEDERAL COM #006 BATTERY RELEASE @ 30-015-44340 |
| Incident Type    | Produced Water Release   |
| Incident Status  | Remediation Closure Report Received  |
| Incident Well    | [30-015-44340] OGDEN 20509 32 29 FEDERAL COM #006H                               |

|  |  |
|--|--|
| Location of Release Source                     |  |
| Please answer all the questions in this group. |  |
| Site Name                                      | Ogden 20509 32 29 Federal Com #006 Battery Release |
| Date Release Discovered                        | 05/14/2024   |
| Surface Owner                                  | State  |

|  |                        |
|--|------------------------|
| Incident Details   |                        |
| Please answer all the questions in this group.   |                        |
| Incident Type  | Produced Water Release |
| Did this release result in a fire or is the result of a fire   | No                     |
| Did this release result in any injuries  | No                     |
| Has this release reached or does it have a reasonable probability of reaching a watercourse          | No                     |
| Has this release endangered or does it have a reasonable probability of endangering public health    | No                     |
| Has this release substantially damaged or will it substantially damage property or the environment   | No                     |
| Is this release of a volume that is or may with reasonable probability be detrimental to fresh water | No                     |

|  |  |
|--|--|
| Nature and Volume of Release   |  |
| Material(s) released, please answer all that apply below. Any calculations or specific justifications for the volumes provided should be attached to the follow-up C-141 submission. |  |
| Crude Oil Released (bbls) Details  | Not answered.  |
| Produced Water Released (bbls) Details   | Cause: Equipment Failure   Fitting   Produced Water   Released: 59 BBL   Recovered: 59 BBL   Lost: 0 BBL.  |
| Is the concentration of chloride in the produced water >10,000 mg/l  | Yes  |
| Condensate Released (bbls) Details   | Not answered.  |
| Natural Gas Vented (Mcf) Details   | Not answered.  |
| Natural Gas Flared (Mcf) Details   | Not answered.  |
| Other Released Details   | Not answered.  |
| Are there additional details for the questions above (i.e. any answer containing Other, Specify, Unknown, and/or Fire, or any negative lost amounts)                                 | On May 14, 2024, a gauge blowout was discovered which released approximately 59 bbls of produced water into the lined secondary containment structure of the tank battery. The release was fully contained within the battery secondary containment and the fluid was recovered and returned to the battery storage tanks. |

**District I**

1625 N. French Dr., Hobbs, NM 88240  
Phone:(575) 393-6161 Fax:(575) 393-0720

**District II**

811 S. First St., Artesia, NM 88210  
Phone:(575) 748-1283 Fax:(575) 748-9720

**District III**

1000 Rio Brazos Rd., Aztec, NM 87410  
Phone:(505) 334-6178 Fax:(505) 334-6170

**District IV**

1220 S. St Francis Dr., Santa Fe, NM 87505  
Phone:(505) 476-3470 Fax:(505) 476-3462

**State of New Mexico**  
**Energy, Minerals and Natural Resources**  
**Oil Conservation Division**  
**1220 S. St Francis Dr.**  
**Santa Fe, NM 87505**

QUESTIONS, Page 2

Action 366408

**QUESTIONS (continued)**

|   |                |   |
|---|----------------|---|
| Operator:<br>BTA OIL PRODUCERS, LLC<br>104 S Pecos<br>Midland, TX 79701 | OGRID:         | 260297  |
|   | Action Number: | 366408  |
|   | Action Type:   | [C-141] Remediation Closure Request C-141 (C-141-v-Closure) |
|   |                |   |

**QUESTIONS**

|   |  |
|---|--|
| <b>Nature and Volume of Release (continued)</b>   |  |
| Is this a gas only submission (i.e. only significant Mcf values reported)   | No, according to supplied volumes this does not appear to be a "gas only" report.  |
| Was this a major release as defined by Subsection A of 19.15.29.7 NMAC  | Yes  |
| Reasons why this would be considered a submission for a notification of a major release   | From paragraph A. "Major release" determine using:<br>(1) an unauthorized release of a volume, excluding gases, of 25 barrels or more. |
| With the implementation of the 19.15.27 NMAC (05/25/2021), venting and/or flaring of natural gas (i.e. gas only) are to be submitted on the C-129 form. |  |

**Initial Response**

The responsible party must undertake the following actions immediately unless they could create a safety hazard that would result in injury.

|  |               |
|--|---------------|
| The source of the release has been stopped   | True          |
| The impacted area has been secured to protect human health and the environment                                     | True          |
| Released materials have been contained via the use of berms or dikes, absorbent pads, or other containment devices | True          |
| All free liquids and recoverable materials have been removed and managed appropriately                             | True          |
| If all the actions described above have not been undertaken, explain why   | Not answered. |

Per Paragraph (4) of Subsection B of 19.15.29.8 NMAC the responsible party may commence remediation immediately after discovery of a release. If remediation has begun, please prepare and attach a narrative of actions to date in the follow-up C-141 submission. If remedial efforts have been successfully completed or if the release occurred within a lined containment area (see Subparagraph (a) of Paragraph (5) of Subsection A of 19.15.29.11 NMAC), please prepare and attach all information needed for closure evaluation in the follow-up C-141 submission.

I hereby certify that the information given above is true and complete to the best of my knowledge and understand that pursuant to OCD rules and regulations all operators are required to report and/or file certain release notifications and perform corrective actions for releases which may endanger public health or the environment. The acceptance of a C-141 report by the OCD does not relieve the operator of liability should their operations have failed to adequately investigate and remediate contamination that pose a threat to groundwater, surface water, human health or the environment. In addition, OCD acceptance of a C-141 report does not relieve the operator of responsibility for compliance with any other federal, state, or local laws and/or regulations.

|  |   |
|--|---|
| I hereby agree and sign off to the above statement | Name: Chuck Terhune<br>Email: rramos@btaoil.com<br>Date: 06/07/2024 |
|--|---|

**District I**

1625 N. French Dr., Hobbs, NM 88240  
Phone:(575) 393-6161 Fax:(575) 393-0720

**District II**

811 S. First St., Artesia, NM 88210  
Phone:(575) 748-1283 Fax:(575) 748-9720

**District III**

1000 Rio Brazos Rd., Aztec, NM 87410  
Phone:(505) 334-6178 Fax:(505) 334-6170

**District IV**

1220 S. St Francis Dr., Santa Fe, NM 87505  
Phone:(505) 476-3470 Fax:(505) 476-3462

**State of New Mexico**  
**Energy, Minerals and Natural Resources**  
**Oil Conservation Division**  
**1220 S. St Francis Dr.**  
**Santa Fe, NM 87505**

QUESTIONS, Page 3

Action 366408

**QUESTIONS (continued)**

|   |                |   |
|---|----------------|---|
| Operator:<br>BTA OIL PRODUCERS, LLC<br>104 S Pecos<br>Midland, TX 79701 | OGRID:         | 260297  |
|   | Action Number: | 366408  |
|   | Action Type:   | [C-141] Remediation Closure Request C-141 (C-141-v-Closure) |
|   |                |   |

**QUESTIONS****Site Characterization**

Please answer all the questions in this group (only required when seeking remediation plan approval and beyond). This information must be provided to the appropriate district office no later than 90 days after the release discovery date.

|  |                                |
|--|--------------------------------|
| What is the shallowest depth to groundwater beneath the area affected by the release in feet below ground surface (ft bgs) | Between 51 and 75 (ft.)        |
| What method was used to determine the depth to ground water  | NM OSE iWaters Database Search |
| Did this release impact groundwater or surface water   | No                             |
| <b>What is the minimum distance, between the closest lateral extents of the release and the following surface areas:</b>   |                                |
| A continuously flowing watercourse or any other significant watercourse  | Between 1 and 5 (mi.)          |
| Any lakebed, sinkhole, or playa lake (measured from the ordinary high-water mark)  | Between 1 and 5 (mi.)          |
| An occupied permanent residence, school, hospital, institution, or church  | Between 1 and 5 (mi.)          |
| A spring or a private domestic fresh water well used by less than five households for domestic or stock watering purposes  | Between 1 and 5 (mi.)          |
| Any other fresh water well or spring   | Between 1000 (ft.) and ½ (mi.) |
| Incorporated municipal boundaries or a defined municipal fresh water well field  | Between 1 and 5 (mi.)          |
| A wetland  | Between 1000 (ft.) and ½ (mi.) |
| A subsurface mine  | Greater than 5 (mi.)           |
| An (non-karst) unstable area   | Greater than 5 (mi.)           |
| Categorize the risk of this well / site being in a karst geology   | High                           |
| A 100-year floodplain  | Greater than 5 (mi.)           |
| Did the release impact areas not on an exploration, development, production, or storage site                               | No                             |

**Remediation Plan**

Please answer all the questions that apply or are indicated. This information must be provided to the appropriate district office no later than 90 days after the release discovery date.

|  |            |
|--|------------|
| Requesting a remediation plan approval with this submission  | Yes        |
| Attach a comprehensive report demonstrating the lateral and vertical extents of soil contamination associated with the release have been determined, pursuant to 19.15.29.11 NMAC and 19.15.29.13 NMAC.  |            |
| Have the lateral and vertical extents of contamination been fully delineated   | Yes        |
| Was this release entirely contained within a lined containment area  | Yes        |
| Per Subsection B of 19.15.29.11 NMAC unless the site characterization report includes completed efforts at remediation, the report must include a proposed remediation plan in accordance with 19.15.29.12 NMAC, which includes the anticipated timelines for beginning and completing the remediation.  |            |
| On what estimated date will the remediation commence   | 05/14/2024 |
| On what date will (or did) the final sampling or liner inspection occur  | 05/31/2024 |
| On what date will (or was) the remediation complete(d)   | 05/14/2024 |
| What is the estimated surface area (in square feet) that will be remediated  | 18000      |
| What is the estimated volume (in cubic yards) that will be remediated  | 0          |
| These estimated dates and measurements are recognized to be the best guess or calculation at the time of submission and may (be) change(d) over time as more remediation efforts are completed.  |            |
| The OCD recognizes that proposed remediation measures may have to be minimally adjusted in accordance with the physical realities encountered during remediation. If the responsible party has any need to significantly deviate from the remediation plan proposed, then it should consult with the division to determine if another remediation plan submission is required. |            |



**District I**

1625 N. French Dr., Hobbs, NM 88240  
Phone:(575) 393-6161 Fax:(575) 393-0720

**District II**

811 S. First St., Artesia, NM 88210  
Phone:(575) 748-1283 Fax:(575) 748-9720

**District III**

1000 Rio Brazos Rd., Aztec, NM 87410  
Phone:(505) 334-6178 Fax:(505) 334-6170

**District IV**

1220 S. St Francis Dr., Santa Fe, NM 87505  
Phone:(505) 476-3470 Fax:(505) 476-3462

**State of New Mexico**  
**Energy, Minerals and Natural Resources**  
**Oil Conservation Division**  
**1220 S. St Francis Dr.**  
**Santa Fe, NM 87505**

QUESTIONS, Page 4

Action 366408

**QUESTIONS (continued)**

|   |                |   |
|---|----------------|---|
| Operator:<br>BTA OIL PRODUCERS, LLC<br>104 S Pecos<br>Midland, TX 79701 | OGRID:         | 260297  |
|   | Action Number: | 366408  |
|   | Action Type:   | [C-141] Remediation Closure Request C-141 (C-141-v-Closure) |
|   |                |   |

**QUESTIONS****Remediation Plan (continued)**

*Please answer all the questions that apply or are indicated. This information must be provided to the appropriate district office no later than 90 days after the release discovery date.*

**This remediation will (or is expected to) utilize the following processes to remediate / reduce contaminants:**

*(Select all answers below that apply.)*

|  |               |
|--|---------------|
| Is (or was) there affected material present needing to be removed              | Yes           |
| Is (or was) there a power wash of the lined containment area (to be) performed | Yes           |
| OTHER (Non-listed remedial process)  | Not answered. |

*Per Subsection B of 19.15.29.11 NMAC unless the site characterization report includes completed efforts at remediation, the report must include a proposed remediation plan in accordance with 19.15.29.12 NMAC, which includes the anticipated timelines for beginning and completing the remediation.*

I hereby certify that the information given above is true and complete to the best of my knowledge and understand that pursuant to OCD rules and regulations all operators are required to report and/or file certain release notifications and perform corrective actions for releases which may endanger public health or the environment. The acceptance of a C-141 report by the OCD does not relieve the operator of liability should their operations have failed to adequately investigate and remediate contamination that pose a threat to groundwater, surface water, human health or the environment. In addition, OCD acceptance of a C-141 report does not relieve the operator of responsibility for compliance with any other federal, state, or local laws and/or regulations.

|  |  |
|--|--|
| I hereby agree and sign off to the above statement | Name: Chuck Terhune<br>Title: Program Manager<br>Email: <a href="mailto:chuck.terhune@tetrattech.com">chuck.terhune@tetrattech.com</a><br>Date: 07/23/2024 |
|--|--|

*The OCD recognizes that proposed remediation measures may have to be minimally adjusted in accordance with the physical realities encountered during remediation. If the responsible party has any need to significantly deviate from the remediation plan proposed, then it should consult with the division to determine if another remediation plan submission is required.*

**District I**

1625 N. French Dr., Hobbs, NM 88240  
Phone:(575) 393-6161 Fax:(575) 393-0720

**District II**

811 S. First St., Artesia, NM 88210  
Phone:(575) 748-1283 Fax:(575) 748-9720

**District III**

1000 Rio Brazos Rd., Aztec, NM 87410  
Phone:(505) 334-6178 Fax:(505) 334-6170

**District IV**

1220 S. St Francis Dr., Santa Fe, NM 87505  
Phone:(505) 476-3470 Fax:(505) 476-3462

**State of New Mexico**  
**Energy, Minerals and Natural Resources**  
**Oil Conservation Division**  
**1220 S. St Francis Dr.**  
**Santa Fe, NM 87505**

QUESTIONS, Page 6

Action 366408

**QUESTIONS (continued)**

|   |                |   |
|---|----------------|---|
| Operator:<br>BTA OIL PRODUCERS, LLC<br>104 S Pecos<br>Midland, TX 79701 | OGRID:         | 260297  |
|   | Action Number: | 366408  |
|   | Action Type:   | [C-141] Remediation Closure Request C-141 (C-141-v-Closure) |
|   |                |   |

**QUESTIONS**

|   |                   |
|---|-------------------|
| <b>Liner Inspection Information</b>   |                   |
| Last liner inspection notification (C-141L) recorded  | <b>348554</b>     |
| Liner inspection date pursuant to Subparagraph (a) of Paragraph (5) of Subsection A of 19.15.29.11 NMAC | <b>05/31/2024</b> |
| Was all the impacted materials removed from the liner   | <b>Yes</b>        |
| What was the liner inspection surface area in square feet   | <b>18000</b>      |

**Remediation Closure Request**

*Only answer the questions in this group if seeking remediation closure for this release because all remediation steps have been completed.*

|   |  |
|---|--|
| Requesting a remediation closure approval with this submission                  | <b>Yes</b>   |
| Have the lateral and vertical extents of contamination been fully delineated    | <b>Yes</b>   |
| Was this release entirely contained within a lined containment area             | <b>Yes</b>   |
| What was the total surface area (in square feet) remediated                     | <b>18000</b>   |
| What was the total volume (cubic yards) remediated                              | <b>0</b>   |
| Summarize any additional remediation activities not included by answers (above) | <b>Remove released produced water from the secondary containment, wash the liner, and perform a line inspection.</b> |

*The responsible party must attach information demonstrating they have complied with all applicable closure requirements and any conditions or directives of the OCD. This demonstration should be in the form of a comprehensive report (in .pdf format) including a scaled site map, sampling diagrams, relevant field notes, photographs of any excavation prior to backfilling, laboratory data including chain of custody documents of final sampling, and a narrative of the remedial activities. Refer to 19.15.29.12 NMAC.*

I hereby certify that the information given above is true and complete to the best of my knowledge and understand that pursuant to OCD rules and regulations all operators are required to report and/or file certain release notifications and perform corrective actions for releases which may endanger public health or the environment. The acceptance of a C-141 report by the OCD does not relieve the operator of liability should their operations have failed to adequately investigate and remediate contamination that pose a threat to groundwater, surface water, human health or the environment. In addition, OCD acceptance of a C-141 report does not relieve the operator of responsibility for compliance with any other federal, state, or local laws and/or regulations. The responsible party acknowledges they must substantially restore, reclaim, and re-vegetate the impacted surface area to the conditions that existed prior to the release or their final land use in accordance with 19.15.29.13 NMAC including notification to the OCD when reclamation and re-vegetation are complete.

|  |  |
|--|--|
| I hereby agree and sign off to the above statement | Name: Chuck Terhune<br>Title: Program Manager<br>Email: <a href="mailto:chuck.terhune@tetrattech.com">chuck.terhune@tetrattech.com</a><br>Date: 07/23/2024 |
|--|--|

**District I**  
1625 N. French Dr., Hobbs, NM 88240  
Phone:(575) 393-6161 Fax:(575) 393-0720  
**District II**  
811 S. First St., Artesia, NM 88210  
Phone:(575) 748-1283 Fax:(575) 748-9720  
**District III**  
1000 Rio Brazos Rd., Aztec, NM 87410  
Phone:(505) 334-6178 Fax:(505) 334-6170  
**District IV**  
1220 S. St Francis Dr., Santa Fe, NM 87505  
Phone:(505) 476-3470 Fax:(505) 476-3462

State of New Mexico  
Energy, Minerals and Natural Resources  
Oil Conservation Division  
1220 S. St Francis Dr.  
Santa Fe, NM 87505

CONDITIONS  
  
Action 366408

CONDITIONS

|   |   |
|---|---|
| Operator:<br>BTA OIL PRODUCERS, LLC<br>104 S Pecos<br>Midland, TX 79701 | OGRID:<br>260297  |
|   | Action Number:<br>366408  |
|   | Action Type:<br>[C-141] Remediation Closure Request C-141 (C-141-v-Closure) |

CONDITIONS

| Created By    | Condition                               | Condition Date |
|---------------|---|----------------|
| scott.rodgers | App ID 366408 Liner Inspection approved | 8/5/2024       |