

EXMOOR 15 CTB 2

6/14/2024

OCD INCIDENT # nAPP2416931381

<b><u>Spill Volume(Bbls) Calculator</u></b>	
<i>Inputs in blue, Outputs in red</i>	
Contaminated Soil measurement	
Area (square feet)	Depth(inches)
<u>3281.4</u>	<u>1.500</u>
Cubic Feet of Soil Impacted	<u>410.175</u>
Barrels of Soil Impacted	<u>73.11</u>
Soil Type	Clay
Barrels of Oil Assuming 100% Saturation	<u>7.31</u>
Saturation	Fluid present with shovel/backhoe
Estimated Barrels of Oil Released	7.31
Free Standing Fluid Only	
Area (square feet)	Depth(inches)
Standing fluid	<u>0.000</u>
<b><u>Total fluids spilled</u></b>	<b><u>7.311</u></b>



---

## LINER INSPECTION CLOSURE REPORT

---

Incident ID nAPP2416931381

**Exmoor 15 CTB 2**

Facility ID fAPP2333921910

Prepared By:

Pima Environmental Services, LLC

Prepared For:

Devon Energy Production, LP

JULY 1, 2024

PIMA ENVIRONMENTAL SERVICES, LLC  
5614 N Loving Hwy, Hobbs, NM 88240

Pima Environmental Services  
5614 N Lovington Hwy  
Hobbs, NM 88240  
575-964-7740

July 1, 2024

NMOCD District 2  
811 S. First St  
Artesia, NM, 88210

Bureau of Land Management  
620 E Green St.  
Carlsbad, NM 88220

**RE: Liner Inspection and Closure Report  
Exmoor 15 CTB 2  
Facility ID fAPP2333921910  
GPS: Latitude 32.134225 Longitude -103.757538  
ULSTR – A – 15 – 25S – 31E 1060 FNL 344 FEL Eddy County, NM  
NMOCD Incident ID nAPP2416931381**

Devon Energy Production Company (Devon) has contracted Pima Environmental Services, LLC (Pima) to perform a liner inspection and prepare this closure report for a produced water release that happened at the Exmoor 15 CTB 2 (Exmoor). This incident was assigned Incident ID nAPP2416931381, by the New Mexico Oil Conservation Division (NMOCD).

#### **Site Information and Site Characterization**

The Exmoor is located approximately nineteen (19) miles southeast of Malaga, NM. This spill site is in Unit A, Section 15, Township 25S, Range 31E, Latitude 32.134225 Longitude -103.757538, Eddy County, NM. A Location Map can be found in Figure 1.

Based upon the New Mexico Office of the State Engineer (C-04632-POD1) well water data, depth to the nearest groundwater in this area is greater than 55 feet below grade surface (BGS), located approximately 1.25 miles from the Exmoor. According to the United States Geological Survey (USGS 320932103443801 25S.31E.02.23441) well water data, depth to the nearest groundwater in this area is 390 feet BGS. See Appendix A for referenced water surveys and water-related maps. The Exmoor is in a low karst area (Figure 3). A Topographic Map can be found in Figure 2.

#### **Release Information**

**nAPP2416931381:** On June 14, 2024, 1/4" nipple on water transfer pump was broken. 7.3 bbls produced water released in lined containment. 7 bbls recovered. The liner was visually inspected by Devon field staff for any pinholes or punctures; none were found. Based on this inspection there is no evidence that the spilled fluids left containment.

A Site Map can be found in Figure 4.

#### **Site Assessment and Liner Inspection**

On June 27, 2024, Pima personnel mobilized equipment to the site to perform power washing of the liner/containment. A vacuum truck accompanied the crew to recover the power washing fluids. At this time the remaining 0.3 bbls missed during the initial recovery effort, were also recovered.

On June 28, 2024, after Devon submitted the 48-hour notification, application ID: 357579 to the OCD, Pima Environmental conducted a liner inspection at this location. Pima concluded that this liner and containment maintained its integrity and was able to retain the fluids. The liner inspection form and photographic documentation can be found in Appendix C.

5614 N Lovington Hwy  
Hobbs, NM 88240  
575-964-7740

### **Closure Request**

After careful review, Pima requests that this incident, nAPP2416931381, be closed. Devon has complied with the applicable closure requirements.

Should you have any questions or need additional information, please feel free to contact:  
Devon Energy – Dale Woodall at 575-748-0167 or [Dale.Woodall@devon.com](mailto:Dale.Woodall@devon.com).  
Pima Environmental – Tom Bynum at 580-748-1613 or [tom@pimaoil.com](mailto:tom@pimaoil.com).

### **Attachments**

Figures:

- 1- Location Map
- 2- Topographic Map
- 3- Karst Map
- 4- Site Map

Appendices:

- Appendix A – Referenced Water Surveys & Water-Related Maps
- Appendix B – 48-Hour Notification
- Appendix C – Liner Inspection Form & Photographic Documentation



***Pima Environmental Services  
5614 N Lovington Hwy  
Hobbs, NM 88240***

**Figures:**


- 1 - Location Map
- 2 - Topographic Map
- 3 - Karst Map
- 4 - Site Map

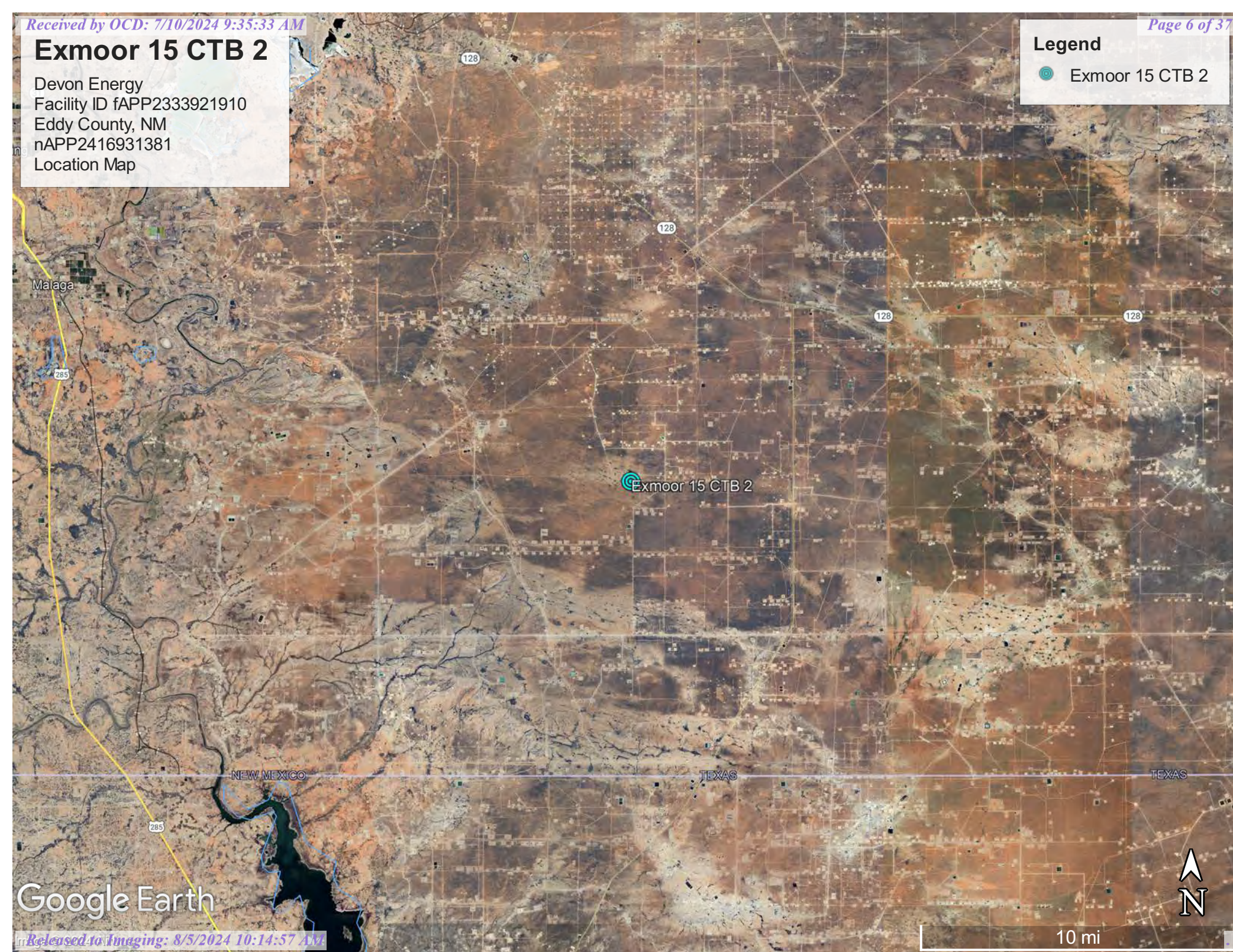


## Exmoor 15 CTB 2

Devon Energy  
Facility ID fAPP2333921910  
Eddy County, NM  
nAPP2416931381  
Location Map

### Legend

 Exmoor 15 CTB 2



Google Earth

10 mi



# Exmoor 15 CTB 2

Devon Energy  
Facility ID fAPP2333921910  
Eddy County, NM  
nAPP2416931381  
Topographic Map

## Legend

Exmoor 15 CTB 2

Drill Hole

Gas Well

Gravel Pit

Exmoor 15 CTB 2

Hurston Tank

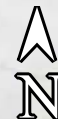
Gravel Pit

Drill Hole

Drill Hole

Google Earth

Released to Imaging: 8/5/2024 10:14:57 AM






1 mi

## Exmoor 15 CTB 2

Devon Energy  
Facility ID fAPP2333921910  
Eddy County, NM  
nAPP2416931381  
Karst Map

### Legend

-  High Karst
-  Low Karst
-  Medium Karst

Exmoor 15 CTB 2



2 mi



Google Earth



## Exmoor 15 CTB 2

Devon Energy  
Facility ID fAPP2333921910  
Eddy County, NM  
nAPP2416931381  
Site Map

### Legend

-  Exmoor 15 CTB 2
-  Lined Containment (Tanks) - 5,495 sqft

Exmoor 15 CTB 2

32.134408, -103.753191

Google Earth

Released to Imaging: 8/5/2024 10:14:57 AM



100 ft



***Pima Environmental Services  
5614 N Lovington Hwy  
Hobbs, NM 88240***

## **Appendix A**

Water Surveys:

OSE

USGS

Surface Water Map

Wetlands Map

Fema Flood Map



# New Mexico Office of the State Engineer

## Water Column/Average Depth to Water

(A CLW##### in the POD suffix indicates the POD has been replaced & no longer serves a water right file.)

(R=POD has been replaced,  
O=orphaned,  
C=the file is closed)

(quarters are 1=NW 2=NE 3=SW 4=SE)  
(quarters are smallest to largest) (NAD83 UTM in meters)

(In feet)

POD Number	POD Code	Sub-basin	County	Q 64	Q 16	Q 4	Sec	Tw	Rng	X	Y	Distance	Depth	Well	Depth	Water Column
<a href="#">C 04632 POD1</a>	CUB	ED		1	2	2	10	25S	31E	616802	3557964	2013		55		
<a href="#">C 04792 POD1</a>	CUB	ED		1	3	4	12	25S	31E	619688	3556651	2583		55		
<a href="#">C 03830 POD1</a>	CUB	ED		4	2	4	02	25S	31E	618632	3558432	2837		450		
<a href="#">C 02570</a>	CUB	ED		4	2	4	02	25S	31E	618704	3558489*	2922		895		

Average Depth to Water: --

Minimum Depth: --

Maximum Depth: --

**Record Count:** 4

### UTM NAD83 Radius Search (in meters):

**Easting (X):** 617190.78

**Northing (Y):** 3555989

**Radius:** 3000

\*UTM location was derived from PLSS - see Help

The data is furnished by the NMOSE/ISC and is accepted by the recipient with the expressed understanding that the OSE/ISC make no warranties, expressed or implied, concerning the accuracy, completeness, reliability, usability, or suitability for any particular purpose of the data.

6/17/24 11:07 AM

WATER COLUMN/ AVERAGE DEPTH TO WATER



# OSE POD Location Map



6/17/2024, 12:12:58 PM

GIS WATERS PODs

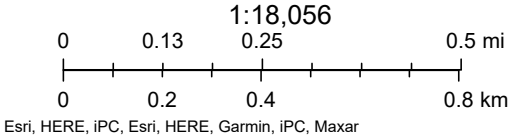
- Active
- Pending
- Plugged
- OSE District Boundary

Water Right Regulations

- Closure Area
- Artesian Planning Area

New Mexico State Trust Lands

- Subsurface Estate
- Both Estates





## National Water Information System: Web Interface

USGS Water Resources

Data Category:

Groundwater

Geographic Area:

United States

GO

Click to hideNews Bulletins

- Explore the *NEW* [USGS National Water Dashboard](#) interactive map to access real-time water data from over 13,500 stations nationwide.
- [Full News](#) 

Groundwater levels for the Nation

 Important: [Next Generation Monitoring Location Page](#)

### Search Results -- 1 sites found

site\_no list =

- 320932103443801

Minimum number of levels = 1

[Save file of selected sites](#) to local disk for future upload

### USGS 320932103443801 25S.31E.02.23441

Available data for this site

Groundwater: Field measurements

GO

Eddy County, New Mexico

Hydrologic Unit Code 13070001

Latitude 32°09'37.4", Longitude 103°44'29.6" NAD83

Land-surface elevation 3,460.00 feet above NGVD29

The depth of the well is 1,016 feet below land surface.

This well is completed in the Other aquifers (N9999OTHER) national aquifer.

This well is completed in the Rustler Formation (312RSLR) local aquifer.

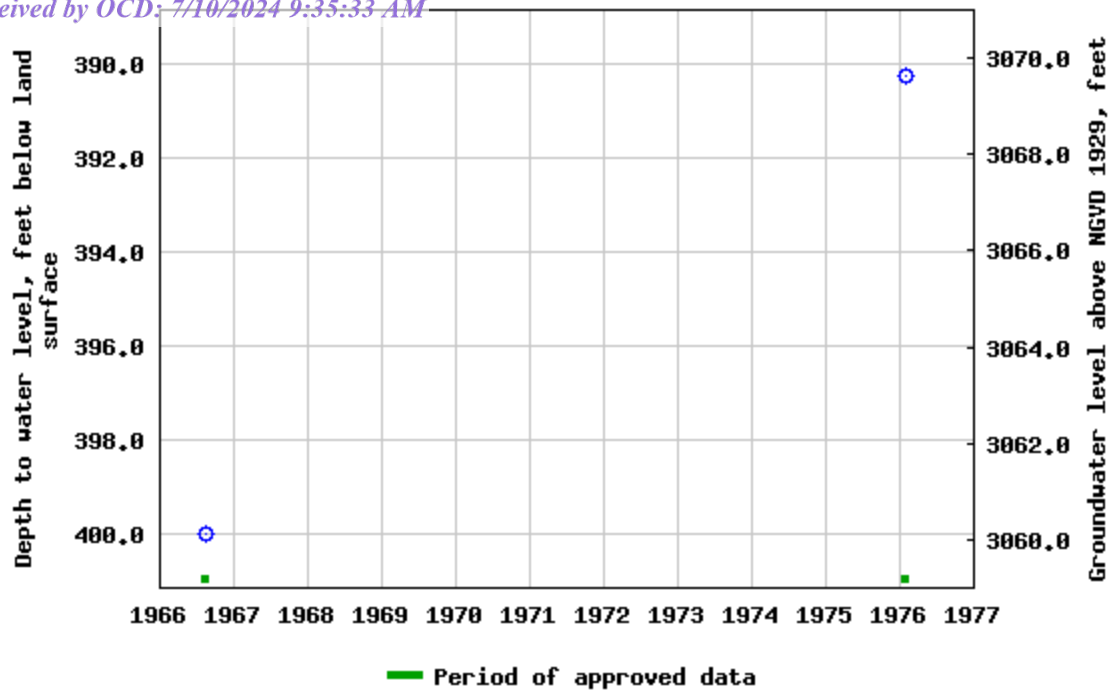
#### Output formats

[Table of data](#)

[Tab-separated data](#)

[Graph of data](#)

[Reselect period](#)



Breaks in the plot represent a gap of at least one year between field measurements.

[Download a presentation-quality graph](#)

[Questions or Comments](#)

[Automated retrievals](#)

[Help](#)

[Data Tips](#)

[Explanation of terms](#)

[Subscribe for system changes](#)

[News](#)

[Accessibility](#)

[FOIA](#)

[Privacy](#)

[Policies and Notices](#)

[U.S. Department of the Interior](#) | [U.S. Geological Survey](#)

**Title: Groundwater for USA: Water Levels**

**URL: <https://nwis.waterdata.usgs.gov/nwis/gwlevels?>**



Page Contact Information: [USGS Water Data Support Team](#)

Page Last Modified: 2024-06-17 13:04:46 EDT

0.55 0.48 nadww01





## National Water Information System: Mapper





## Exmoor 15 CTB 2

Devon Energy  
Facility ID fAPP2333921910  
Eddy County, NM  
nAPP2416931381  
Surface Water Map

### Legend

- 12.8 Miles
- Pecos River

Pecos River

Exmoor 15 CTB 2

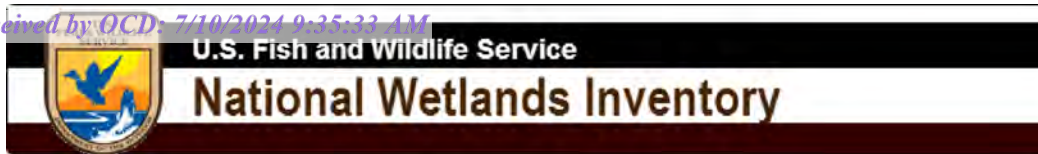
128



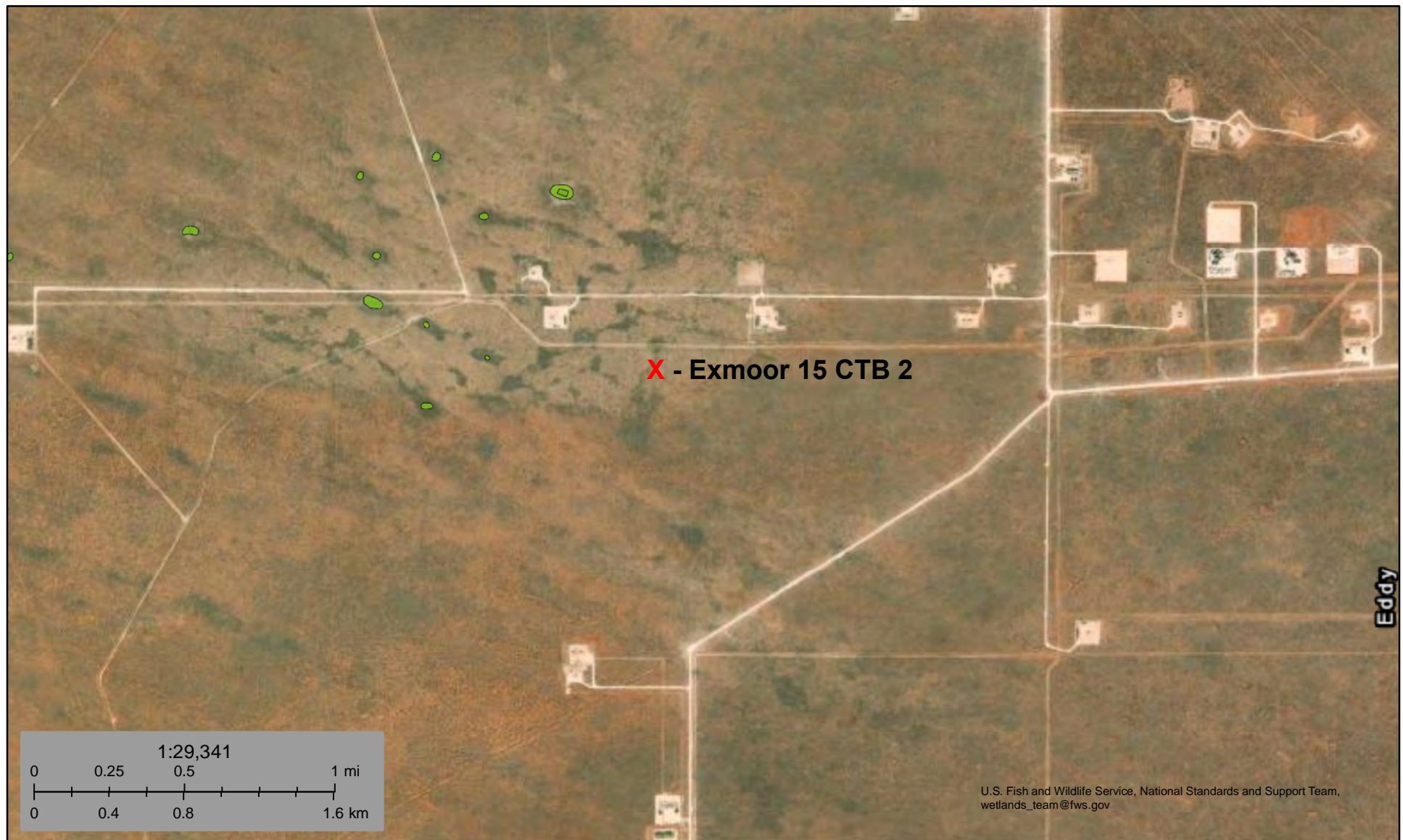
6 mi

Google Earth





## Wetlands Map



June 17, 2024

**Wetlands**

- Estuarine and Marine Deepwater
- Estuarine and Marine Wetland

- Freshwater Emergent Wetland
- Freshwater Forested/Shrub Wetland
- Freshwater Pond

- Lake
- Other
- Riverine

This map is for general reference only. The US Fish and Wildlife Service is not responsible for the accuracy or currentness of the base data shown on this map. All wetlands related data should be used in accordance with the layer metadata found on the Wetlands Mapper web site.



# National Flood Hazard Layer FIRMMette



103°45'51"W 32°8'18"N



0 250 500 1,000 1,500 2,000 Feet

1:6,000

103°45'14"W 32°7'48"N

Released to Imaging: 8/5/2024 10:14:57 AM

Basemap Imagery Source: USGS National Map 2023

## Legend

SEE FIS REPORT FOR DETAILED LEGEND AND INDEX MAP FOR FIRM PANEL LAYOUT

SPECIAL FLOOD HAZARD AREAS		Without Base Flood Elevation (BFE) Zone A, V, A99
		With BFE or Depth Zone AE, AO, AH, VE, AR
		Regulatory Floodway
OTHER AREAS OF FLOOD HAZARD		0.2% Annual Chance Flood Hazard, Areas of 1% annual chance flood with average depth less than one foot or with drainage areas of less than one square mile Zone X
		Future Conditions 1% Annual Chance Flood Hazard Zone X
		Area with Reduced Flood Risk due to Levee. See Notes. Zone X
		Area with Flood Risk due to Levee Zone D
OTHER AREAS		NO SCREEN Area of Minimal Flood Hazard Zone X
		Effective LOMRs
GENERAL STRUCTURES		Area of Undetermined Flood Hazard Zone D
		Channel, Culvert, or Storm Sewer
		Levee, Dike, or Floodwall
		Cross Sections with 1% Annual Chance Water Surface Elevation
OTHER FEATURES		Coastal Transect
		Base Flood Elevation Line (BFE)
		Limit of Study
		Jurisdiction Boundary
		Coastal Transect Baseline
		Profile Baseline
		Hydrographic Feature
		Digital Data Available
		No Digital Data Available
		Unmapped



The pin displayed on the map is an approximate point selected by the user and does not represent an authoritative property location.

This map complies with FEMA's standards for the use of digital flood maps if it is not void as described below. The basemap shown complies with FEMA's basemap accuracy standards

The flood hazard information is derived directly from the authoritative NFHL web services provided by FEMA. This map was exported on 6/18/2024 at 3:21 PM and does not reflect changes or amendments subsequent to this date and time. The NFHL and effective information may change or become superseded by new data over time.

This map image is void if the one or more of the following map elements do not appear: basemap imagery, flood zone labels, legend, scale bar, map creation date, community identifiers, FIRM panel number, and FIRM effective date. Map images for unmapped and unmodernized areas cannot be used for regulatory purposes.



***Pima Environmental Services  
5614 N Lovington Hwy  
Hobbs, NM 88240***

## **Appendix B**

48-Hour Notification



Tom Pima Oil &lt;tom@pimaoil.com&gt;

---

**FW: [EXTERNAL] The Oil Conservation Division (OCD) has accepted the application, Application ID: 357579**

1 message

**Woodall, Dale** <Dale.Woodall@dvn.com>

Wed, Jun 26, 2024 at 8:04 AM

To: Tom Pima Oil &lt;tom@pimaoil.com&gt;, Gio PimaOil &lt;gio@pimaoil.com&gt;, Lynsey Pima Oil &lt;lynsey@pimaoil.com&gt;, Delrae Pima Oil &lt;delrae@pimaoil.com&gt;

Dale Woodall

**Environmental Professional****Hobbs, NM****Office:** 575-748-1838**Mobile:** 405-318-4697[Dale.Woodall@dvn.com](mailto:Dale.Woodall@dvn.com)

---

**From:** [OCDOnline@state.nm.us](mailto:OCDOnline@state.nm.us) <[OCDOnline@state.nm.us](mailto:OCDOnline@state.nm.us)>**Sent:** Wednesday, June 26, 2024 7:01 AM**To:** Woodall, Dale <[Dale.Woodall@dvn.com](mailto:Dale.Woodall@dvn.com)>**Subject:** [EXTERNAL] The Oil Conservation Division (OCD) has accepted the application, Application ID: 357579

To whom it may concern (c/o Dale Woodall for DEVON ENERGY PRODUCTION COMPANY, LP),

The OCD has received the submitted *Notification for Liner Inspection for a Release* (C-141L), for incident ID (n#) nAPP2416931381.

The liner inspection is expected to take place:

**When:** 06/28/2024 @ 12:00**Where:** A-15-25S-31E 1060 FNL 344 FEL (32.134225,-103.757538)**Additional Information:** Andrew Franco (806) 200-0054**Additional Instructions:** A-15-25S-31E Lat/Long: 32.134225, -103.757538 From the intersection of NM128 and Buck Jackson Road in Eddy county, travel south on Buck Jackson Rd for 4.75 miles, turn southeast on lease road for 4 miles, turn east for 0.6 miles, turn south for 1,260 feet, curve west into location.

An OCD representative may be available onsite at the date and time reported. In the absence or presence of an OCD representative, liner inspection pursuant to 19.15.29.11.A(5)(a) NMAC is required. Should there be a change in the scheduled date and time of the sampling event, then another notification should be resubmitted through OCD permitting as soon as possible.

- **Failure to notify the OCD of liner inspections including any changes in date/time per the requirements of 19.15.29.11.A(5)(a)(ii) NMAC, may result in the inspection not being accepted.**

If you have any questions regarding this application, or don't know why you have received this email, please contact us.



**New Mexico Energy, Minerals and Natural Resources Department**  
[1220 South St. Francis Drive](#)  
Santa Fe, NM 87505

Confidentiality Warning: This message and any attachments are intended only for the use of the intended recipient(s), are confidential, and may be privileged. If you are not the intended recipient, you are hereby notified that any review, retransmission, conversion to hard copy, copying, circulation or other use of all or any portion of this message and any attachments is strictly prohibited. If you are not the intended recipient, please notify the sender immediately by return e-mail, and delete this message and any attachments from your system.



***Pima Environmental Services  
5614 N Lovington Hwy  
Hobbs, NM 88240***

## **Appendix C**

Liner Inspection Form  
Photographic Documentation



Pima Environmental Services, LLC  
5614 N Lovington Hwy.  
Hobbs, NM 88240

### Liner Inspection Form

Company Name: Devon Energy Production

Site: Exmoor 15 CTB 2

Lat/Long: 32.134225, -103.757538

NMOCD Incident ID

& Incident Date: nAPP2416931381 June 14, 2024

2-Day Notification

Sent: June 26, 2024

Inspection Date: June 28, 2024 @12:00 p.m.

Liner Type: Earthen w/liner Earthen no liner Polystar

**Steel w/poly liner**

Steel w/spray epoxy

No Liner

Other: \_\_\_\_\_

Visualization	Yes	No	Comments
Is there a tear in the liner?		X	
Are there holes in the liner?		X	
Is the liner retaining any fluids?	X		From power washing
Does the liner have integrity to contain a leak?	X		

Comments: \_\_\_\_\_

Inspector Name: Andrew Franco

Inspector Signature: Andrew Franco



## PHOTOGRAPHIC LOG - nAPP2416931381

Devon Energy Production Company  
Exmoor 15 CTB 2

### Photograph No. 1

**Description:** Point of release



### Photograph No. 2

**Description:** Pre-inspection, liner/containment needs power washed



### Photograph No. 3

**Description:** Pre-inspection, liner/containment needs power washed



## PHOTOGRAPHIC LOG - nAPP2416931381

Devon Energy Production Company  
Exmoor 15 CTB 2

Photograph No. 4

**Description:** Pre-inspection, liner/containment needs power washed



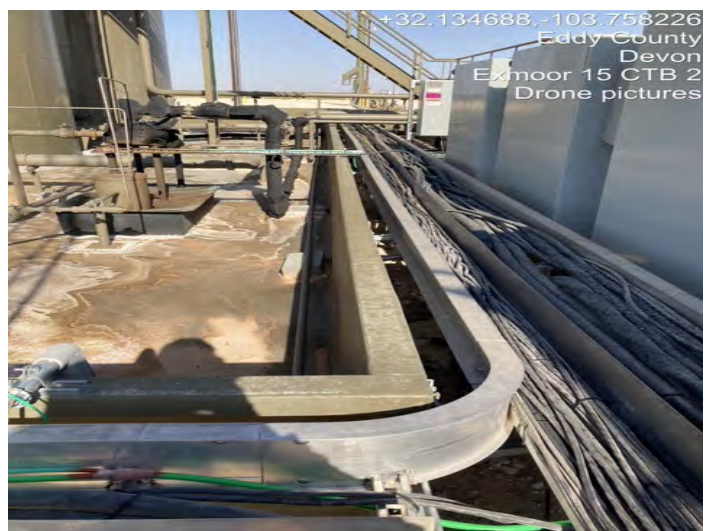
Photograph No. 5

**Description:** Pre-inspection, liner/containment needs power washed



Photograph No. 6

**Description:** Pre-inspection, liner/containment needs power washed





## PHOTOGRAPHIC LOG - nAPP2416931381

Devon Energy Production Company  
Exmoor 15 CTB 2

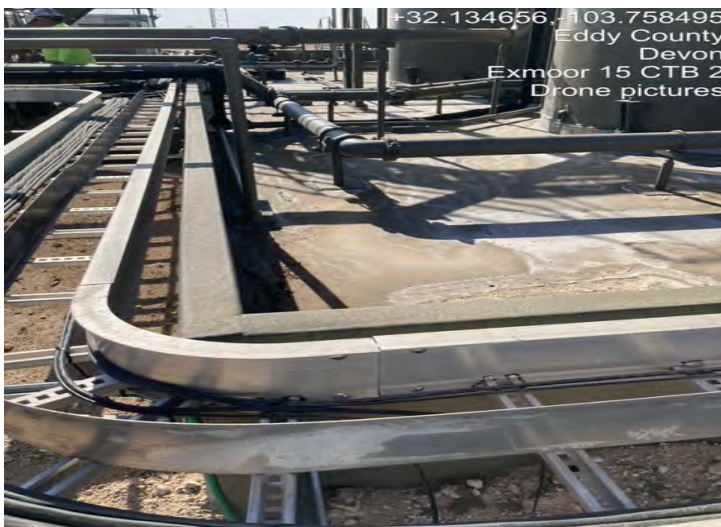
### Photograph No. 7

**Description:** Pre-inspection, liner/containment  
needs power washed



### Photograph No. 8

**Description:** Pre-inspection, liner/containment  
needs power washed



### Photograph No. 9

**Description:** Pre-inspection, liner/containment  
needs power washed





## PHOTOGRAPHIC LOG - nAPP2416931381

Devon Energy Production Company  
Exmoor 15 CTB 2

Photograph No. 1

Description: Post-wash, southeast corner looking north



Photograph No. 2

Description: Post-wash, southeast corner looking west



Photograph No. 3

Description: Post-wash, northeast corner looking west



## PHOTOGRAPHIC LOG - nAPP2416931381

Devon Energy Production Company  
Exmoor 15 CTB 2

Photograph No. 4

**Description:** Post-wash, northeast corner looking south



Photograph No. 5

**Description:** Post-wash, southwest corner looking east



Photograph No. 6

**Description:** Post-wash, southwest corner looking north



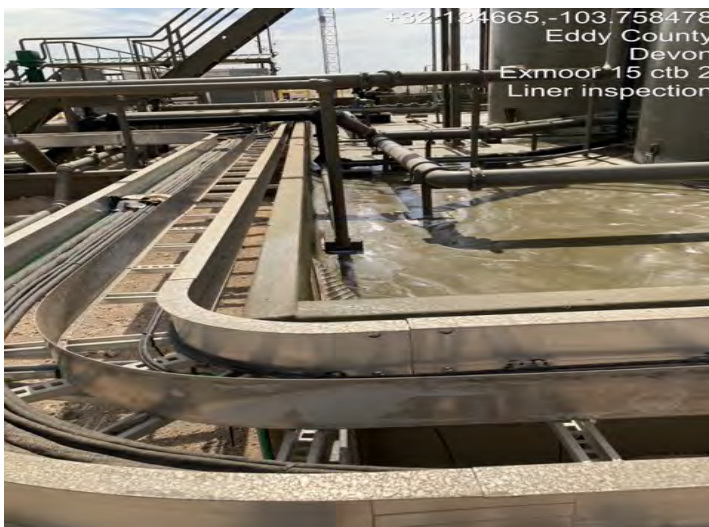


## PHOTOGRAPHIC LOG - nAPP2416931381

Devon Energy Production Company  
Exmoor 15 CTB 2

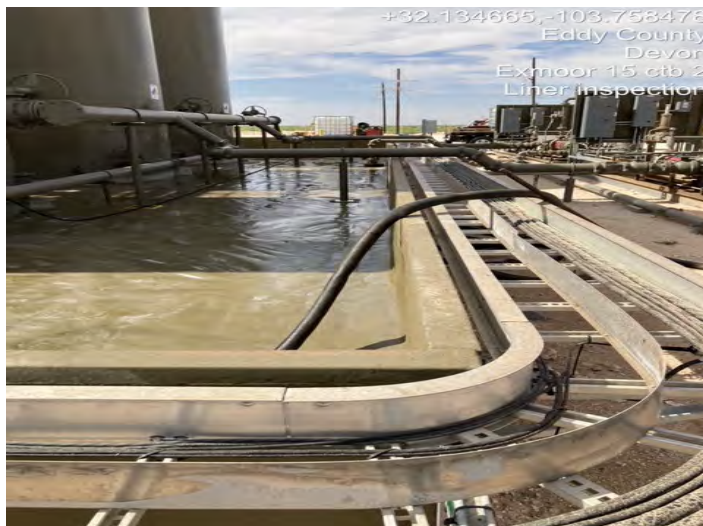
### Photograph No. 7

**Description:** Post-wash, northwest corner looking east



### Photograph No. 8

**Description:** Post-wash, northwest corner looking south



### Photograph No. 9

**Description:** Post-wash, aerial view west side



## PHOTOGRAPHIC LOG - nAPP2416931381

Devon Energy Production Company  
Exmoor 15 CTB 2

Photograph No. 10

Description: Post-wash, aerial view north side



Photograph No. 11

Description: Post-wash, aerial view east side



Photograph No. 12

Description: Post-wash, aerial view south side





## **PHOTOGRAPHIC LOG - nAPP2416931381**

**Devon Energy Production Company  
Exmoor 15 CTB 2**

### **Photograph No. 13**

**Description:** Post-wash, aerial view overhead



**District I**  
1625 N. French Dr., Hobbs, NM 88240  
Phone:(575) 393-6161 Fax:(575) 393-0720  
**District II**  
811 S. First St., Artesia, NM 88210  
Phone:(575) 748-1283 Fax:(575) 748-9720  
**District III**  
1000 Rio Brazos Rd., Aztec, NM 87410  
Phone:(505) 334-6178 Fax:(505) 334-6170  
**District IV**  
1220 S. St Francis Dr., Santa Fe, NM 87505  
Phone:(505) 476-3470 Fax:(505) 476-3462

State of New Mexico  
Energy, Minerals and Natural Resources  
Oil Conservation Division  
1220 S. St Francis Dr.  
Santa Fe, NM 87505

QUESTIONS  
  
Action 362586

QUESTIONS

Operator: DEVON ENERGY PRODUCTION COMPANY, LP 333 West Sheridan Ave. Oklahoma City, OK 73102	OGRID:	6137
	Action Number:	362586
	Action Type:	[C-141] Remediation Closure Request C-141 (C-141-v-Closure)

QUESTIONS

Prerequisites	
Incident ID (n#)	nAPP2416931381
Incident Name	NAPP2416931381 EXMOOR 15 CTB 2 @ 0
Incident Type	Produced Water Release
Incident Status	Remediation Closure Report Received
Incident Facility	[fAPP2333921910] EXMOOR 15 CTB 2

Location of Release Source	
Please answer all the questions in this group.	
Site Name	EXMOOR 15 CTB 2
Date Release Discovered	06/14/2024
Surface Owner	Federal

Incident Details	
Please answer all the questions in this group.	
Incident Type	Produced Water Release
Did this release result in a fire or is the result of a fire	No
Did this release result in any injuries	No
Has this release reached or does it have a reasonable probability of reaching a watercourse	No
Has this release endangered or does it have a reasonable probability of endangering public health	No
Has this release substantially damaged or will it substantially damage property or the environment	No
Is this release of a volume that is or may with reasonable probability be detrimental to fresh water	No

Nature and Volume of Release	
Material(s) released, please answer all that apply below. Any calculations or specific justifications for the volumes provided should be attached to the follow-up C-141 submission.	
Crude Oil Released (bbls) Details	Not answered.
Produced Water Released (bbls) Details	Cause: Equipment Failure   Pump   Produced Water   Released: 7 BBL   Recovered: 7 BBL   Lost: 0 BBL.
Is the concentration of chloride in the produced water >10,000 mg/l	No
Condensate Released (bbls) Details	Not answered.
Natural Gas Vented (Mcf) Details	Not answered.
Natural Gas Flared (Mcf) Details	Not answered.
Other Released Details	Not answered.
Are there additional details for the questions above (i.e. any answer containing Other, Specify, Unknown, and/or Fire, or any negative lost amounts)	1/4" nipple on water transfer pump was broken. 7.3 bbls produced water released in lined containment. 7 bbls recovered.

**District I**

1625 N. French Dr., Hobbs, NM 88240  
Phone:(575) 393-6161 Fax:(575) 393-0720

**District II**

811 S. First St., Artesia, NM 88210  
Phone:(575) 748-1283 Fax:(575) 748-9720

**District III**

1000 Rio Brazos Rd., Aztec, NM 87410  
Phone:(505) 334-6178 Fax:(505) 334-6170

**District IV**

1220 S. St Francis Dr., Santa Fe, NM 87505  
Phone:(505) 476-3470 Fax:(505) 476-3462

**State of New Mexico**  
**Energy, Minerals and Natural Resources**  
**Oil Conservation Division**  
**1220 S. St Francis Dr.**  
**Santa Fe, NM 87505**

QUESTIONS, Page 2

Action 362586

**QUESTIONS (continued)**

Operator: DEVON ENERGY PRODUCTION COMPANY, LP 333 West Sheridan Ave. Oklahoma City, OK 73102	OGRID:
	6137
	Action Number:
	362586
Action Type:	
[C-141] Remediation Closure Request C-141 (C-141-v-Closure)	

**QUESTIONS**

Nature and Volume of Release (continued)	
Is this a gas only submission (i.e. only significant Mcf values reported)	No, according to supplied volumes this does not appear to be a "gas only" report.
Was this a major release as defined by Subsection A of 19.15.29.7 NMAC	No
Reasons why this would be considered a submission for a notification of a major release	Unavailable.
With the implementation of the 19.15.27 NMAC (05/25/2021), venting and/or flaring of natural gas (i.e. gas only) are to be submitted on the C-129 form.	

**Initial Response**

The responsible party must undertake the following actions immediately unless they could create a safety hazard that would result in injury.

The source of the release has been stopped	True
The impacted area has been secured to protect human health and the environment	True
Released materials have been contained via the use of berms or dikes, absorbent pads, or other containment devices	True
All free liquids and recoverable materials have been removed and managed appropriately	True
If all the actions described above have not been undertaken, explain why	Not answered.

Per Paragraph (4) of Subsection B of 19.15.29.8 NMAC the responsible party may commence remediation immediately after discovery of a release. If remediation has begun, please prepare and attach a narrative of actions to date in the follow-up C-141 submission. If remedial efforts have been successfully completed or if the release occurred within a lined containment area (see Subparagraph (a) of Paragraph (5) of Subsection A of 19.15.29.11 NMAC), please prepare and attach all information needed for closure evaluation in the follow-up C-141 submission.

I hereby certify that the information given above is true and complete to the best of my knowledge and understand that pursuant to OCD rules and regulations all operators are required to report and/or file certain release notifications and perform corrective actions for releases which may endanger public health or the environment. The acceptance of a C-141 report by the OCD does not relieve the operator of liability should their operations have failed to adequately investigate and remediate contamination that pose a threat to groundwater, surface water, human health or the environment. In addition, OCD acceptance of a C-141 report does not relieve the operator of responsibility for compliance with any other federal, state, or local laws and/or regulations.

I hereby agree and sign off to the above statement	Name: Dale Woodall Title: EHS Professional Email: Dale.Woodall@dnv.com Date: 07/10/2024
----------------------------------------------------	--------------------------------------------------------------------------------------------------

**District I**

1625 N. French Dr., Hobbs, NM 88240  
Phone:(575) 393-6161 Fax:(575) 393-0720

**District II**

811 S. First St., Artesia, NM 88210  
Phone:(575) 748-1283 Fax:(575) 748-9720

**District III**

1000 Rio Brazos Rd., Aztec, NM 87410  
Phone:(505) 334-6178 Fax:(505) 334-6170

**District IV**

1220 S. St Francis Dr., Santa Fe, NM 87505  
Phone:(505) 476-3470 Fax:(505) 476-3462

**State of New Mexico**  
**Energy, Minerals and Natural Resources**  
**Oil Conservation Division**  
**1220 S. St Francis Dr.**  
**Santa Fe, NM 87505**

QUESTIONS, Page 3

Action 362586

**QUESTIONS (continued)**

Operator: DEVON ENERGY PRODUCTION COMPANY, LP 333 West Sheridan Ave. Oklahoma City, OK 73102	OGRID:	6137
	Action Number:	362586
	Action Type:	[C-141] Remediation Closure Request C-141 (C-141-v-Closure)

**QUESTIONS****Site Characterization**

Please answer all the questions in this group (only required when seeking remediation plan approval and beyond). This information must be provided to the appropriate district office no later than 90 days after the release discovery date.

What is the shallowest depth to groundwater beneath the area affected by the release in feet below ground surface (ft bgs)	Between 51 and 75 (ft.)
What method was used to determine the depth to ground water	NM OSE iWaters Database Search
Did this release impact groundwater or surface water	No
<b>What is the minimum distance, between the closest lateral extents of the release and the following surface areas:</b>	
A continuously flowing watercourse or any other significant watercourse	Greater than 5 (mi.)
Any lakebed, sinkhole, or playa lake (measured from the ordinary high-water mark)	Between 1 and 5 (mi.)
An occupied permanent residence, school, hospital, institution, or church	Greater than 5 (mi.)
A spring or a private domestic fresh water well used by less than five households for domestic or stock watering purposes	Between 1 and 5 (mi.)
Any other fresh water well or spring	Between 1 and 5 (mi.)
Incorporated municipal boundaries or a defined municipal fresh water well field	Greater than 5 (mi.)
A wetland	Between ½ and 1 (mi.)
A subsurface mine	Greater than 5 (mi.)
An (non-karst) unstable area	Greater than 5 (mi.)
Categorize the risk of this well / site being in a karst geology	Low
A 100-year floodplain	Greater than 5 (mi.)
Did the release impact areas not on an exploration, development, production, or storage site	No

**Remediation Plan**

Please answer all the questions that apply or are indicated. This information must be provided to the appropriate district office no later than 90 days after the release discovery date.

Requesting a remediation plan approval with this submission	Yes
Attach a comprehensive report demonstrating the lateral and vertical extents of soil contamination associated with the release have been determined, pursuant to 19.15.29.11 NMAC and 19.15.29.13 NMAC.	
Have the lateral and vertical extents of contamination been fully delineated	Yes
Was this release entirely contained within a lined containment area	Yes
Per Subsection B of 19.15.29.11 NMAC unless the site characterization report includes completed efforts at remediation, the report must include a proposed remediation plan in accordance with 19.15.29.12 NMAC, which includes the anticipated timelines for beginning and completing the remediation.	
On what estimated date will the remediation commence	06/27/2024
On what date will (or did) the final sampling or liner inspection occur	06/27/2024
On what date will (or was) the remediation complete(d)	06/27/2024
What is the estimated surface area (in square feet) that will be remediated	0
What is the estimated volume (in cubic yards) that will be remediated	0
These estimated dates and measurements are recognized to be the best guess or calculation at the time of submission and may (be) change(d) over time as more remediation efforts are completed.	
The OCD recognizes that proposed remediation measures may have to be minimally adjusted in accordance with the physical realities encountered during remediation. If the responsible party has any need to significantly deviate from the remediation plan proposed, then it should consult with the division to determine if another remediation plan submission is required.	



**District I**

1625 N. French Dr., Hobbs, NM 88240  
Phone:(575) 393-6161 Fax:(575) 393-0720

**District II**

811 S. First St., Artesia, NM 88210  
Phone:(575) 748-1283 Fax:(575) 748-9720

**District III**

1000 Rio Brazos Rd., Aztec, NM 87410  
Phone:(505) 334-6178 Fax:(505) 334-6170

**District IV**

1220 S. St Francis Dr., Santa Fe, NM 87505  
Phone:(505) 476-3470 Fax:(505) 476-3462

**State of New Mexico**  
**Energy, Minerals and Natural Resources**  
**Oil Conservation Division**  
**1220 S. St Francis Dr.**  
**Santa Fe, NM 87505**

QUESTIONS, Page 4

Action 362586

**QUESTIONS (continued)**

Operator: DEVON ENERGY PRODUCTION COMPANY, LP 333 West Sheridan Ave. Oklahoma City, OK 73102	OGRID:	6137
	Action Number:	362586
	Action Type:	[C-141] Remediation Closure Request C-141 (C-141-v-Closure)

**QUESTIONS****Remediation Plan (continued)**

Please answer all the questions that apply or are indicated. This information must be provided to the appropriate district office no later than 90 days after the release discovery date.

**This remediation will (or is expected to) utilize the following processes to remediate / reduce contaminants:**

(Select all answers below that apply.)

Is (or was) there affected material present needing to be removed	Yes
Is (or was) there a power wash of the lined containment area (to be) performed	Yes
OTHER (Non-listed remedial process)	No

Per Subsection B of 19.15.29.11 NMAC unless the site characterization report includes completed efforts at remediation, the report must include a proposed remediation plan in accordance with 19.15.29.12 NMAC, which includes the anticipated timelines for beginning and completing the remediation.

I hereby certify that the information given above is true and complete to the best of my knowledge and understand that pursuant to OCD rules and regulations all operators are required to report and/or file certain release notifications and perform corrective actions for releases which may endanger public health or the environment. The acceptance of a C-141 report by the OCD does not relieve the operator of liability should their operations have failed to adequately investigate and remediate contamination that pose a threat to groundwater, surface water, human health or the environment. In addition, OCD acceptance of a C-141 report does not relieve the operator of responsibility for compliance with any other federal, state, or local laws and/or regulations.

I hereby agree and sign off to the above statement	Name: Dale Woodall Title: EHS Professional Email: Dale.Woodall@dmn.com Date: 07/10/2024
----------------------------------------------------	--------------------------------------------------------------------------------------------------

The OCD recognizes that proposed remediation measures may have to be minimally adjusted in accordance with the physical realities encountered during remediation. If the responsible party has any need to significantly deviate from the remediation plan proposed, then it should consult with the division to determine if another remediation plan submission is required.

**District I**

1625 N. French Dr., Hobbs, NM 88240  
Phone:(575) 393-6161 Fax:(575) 393-0720

**District II**

811 S. First St., Artesia, NM 88210  
Phone:(575) 748-1283 Fax:(575) 748-9720

**District III**

1000 Rio Brazos Rd., Aztec, NM 87410  
Phone:(505) 334-6178 Fax:(505) 334-6170

**District IV**

1220 S. St Francis Dr., Santa Fe, NM 87505  
Phone:(505) 476-3470 Fax:(505) 476-3462

**State of New Mexico**  
**Energy, Minerals and Natural Resources**  
**Oil Conservation Division**  
**1220 S. St Francis Dr.**  
**Santa Fe, NM 87505**

QUESTIONS, Page 6

Action 362586

**QUESTIONS (continued)**

Operator: DEVON ENERGY PRODUCTION COMPANY, LP 333 West Sheridan Ave. Oklahoma City, OK 73102	OGRID:	6137
	Action Number:	362586
	Action Type:	[C-141] Remediation Closure Request C-141 (C-141-v-Closure)

**QUESTIONS**

<b>Liner Inspection Information</b>	
Last liner inspection notification (C-141L) recorded	357579
Liner inspection date pursuant to Subparagraph (a) of Paragraph (5) of Subsection A of 19.15.29.11 NMAC	06/28/2024
Was all the impacted materials removed from the liner	Yes
What was the liner inspection surface area in square feet	17877

**Remediation Closure Request**

Only answer the questions in this group if seeking remediation closure for this release because all remediation steps have been completed.

Requesting a remediation closure approval with this submission	Yes
Have the lateral and vertical extents of contamination been fully delineated	Yes
Was this release entirely contained within a lined containment area	Yes
What was the total surface area (in square feet) remediated	0
What was the total volume (cubic yards) remediated	0
Summarize any additional remediation activities not included by answers (above)	there were no holes in the liner

The responsible party must attach information demonstrating they have complied with all applicable closure requirements and any conditions or directives of the OCD. This demonstration should be in the form of a comprehensive report (in .pdf format) including a scaled site map, sampling diagrams, relevant field notes, photographs of any excavation prior to backfilling, laboratory data including chain of custody documents of final sampling, and a narrative of the remedial activities. Refer to 19.15.29.12 NMAC.

I hereby certify that the information given above is true and complete to the best of my knowledge and understand that pursuant to OCD rules and regulations all operators are required to report and/or file certain release notifications and perform corrective actions for releases which may endanger public health or the environment. The acceptance of a C-141 report by the OCD does not relieve the operator of liability should their operations have failed to adequately investigate and remediate contamination that pose a threat to groundwater, surface water, human health or the environment. In addition, OCD acceptance of a C-141 report does not relieve the operator of responsibility for compliance with any other federal, state, or local laws and/or regulations. The responsible party acknowledges they must substantially restore, reclaim, and re-vegetate the impacted surface area to the conditions that existed prior to the release or their final land use in accordance with 19.15.29.13 NMAC including notification to the OCD when reclamation and re-vegetation are complete.

I hereby agree and sign off to the above statement	Name: Dale Woodall Title: EHS Professional Email: Dale.Woodall@dmn.com Date: 07/10/2024
----------------------------------------------------	--------------------------------------------------------------------------------------------------

**District I**  
1625 N. French Dr., Hobbs, NM 88240  
Phone:(575) 393-6161 Fax:(575) 393-0720  
**District II**  
811 S. First St., Artesia, NM 88210  
Phone:(575) 748-1283 Fax:(575) 748-9720  
**District III**  
1000 Rio Brazos Rd., Aztec, NM 87410  
Phone:(505) 334-6178 Fax:(505) 334-6170  
**District IV**  
1220 S. St Francis Dr., Santa Fe, NM 87505  
Phone:(505) 476-3470 Fax:(505) 476-3462

State of New Mexico  
Energy, Minerals and Natural Resources  
Oil Conservation Division  
1220 S. St Francis Dr.  
Santa Fe, NM 87505

CONDITIONS  
  
Action 362586

CONDITIONS

Operator: DEVON ENERGY PRODUCTION COMPANY, LP 333 West Sheridan Ave. Oklahoma City, OK 73102	OGRID: 6137
	Action Number: 362586
	Action Type: [C-141] Remediation Closure Request C-141 (C-141-v-Closure)

CONDITIONS

Created By	Condition	Condition Date
crystal.walker	None	8/5/2024