



SITE INFORMATION

Closure Report
RDX Federal 21 #022
Incident ID: nAPP2420128041
Unit F Sec 21 T26S R30E
Eddy County, New Mexico
32.0307274°, -103.8895874°

Produced Water Release
Point of Release: Tank Overflow
Release Date: 07.18.24
Volume Released: 50 Barrels of Produced Water
Volume Recovered: 50 Barrels of Produced Water

CARMONA RESOURCES



Prepared for:
Devon Energy
5315 Buena Vista Drive,
Carlsbad, New Mexico 88220

Prepared by:
Carmona Resources, LLC
310 West Wall Street
Suite 500
Midland, Texas 79701



TABLE OF CONTENTS

1.0 SITE INFORMATION AND BACKGROUND

2.0 SITE CHARACTERIZATION AND GROUNDWATER

3.0 NMAC REGULATORY CRITERIA

4.0 LINER INSPECTION ACTIVITIES

5.0 CONCLUSIONS

FIGURES

FIGURE 1 OVERVIEW FIGURE 2 TOPOGRAPHIC

FIGURE 3 SECONDARY CONTAINMENT MAP

APPENDICES

APPENDIX A PHOTOS

APPENDIX B N.O.R. AND FINAL C-141/NMOCD CORRESPONDENCE

APPENDIX C SITE CHARACTERIZATION AND GROUNDWATER

August 2, 2024

Mike Bratcher
District Supervisor
Oil Conservation Division, District 2
811 S. First Street
Artesia, New Mexico 88210

Re: Closure Report
RDX Federal 21 #022
Devon Energy
Incident ID: NAPP2420128041
Site Location: Unit F, S21, T26S, R30E
(Lat 32.0307274°, Long -103.8895874°)
Eddy County, New Mexico

Mr. Bratcher:

On behalf of Devon Energy (Devon), Carmona Resources, LLC has prepared this letter to document site activities for the RDX Federal 21 #022. The site is located at 32.0307274°, -103.8895874° within Unit F, S21, T26S, R30E, in Eddy County, New Mexico (Figures 1 and 2).

1.0 Site Information and Background

Based on the Notice of Release obtained from the New Mexico Oil Conservation Division (NMOCD), the release was discovered on July 18, 2024, caused by tank overflow. It resulted in the release of approximately fifty (50) barrels of produced water, and approximately fifty (50) barrels of produced water were recovered within the lined facility. See Figure 3. The Notice of Release form is attached in Appendix B.

2.0 Site Characterization and Groundwater

The site is located within a medium karst area. Based on a review of the New Mexico Office of State Engineers and USGS databases, no known water sources are within a 0.50-mile radius of the location. The closest well is located approximately 1.63 miles Southeast of the site in S22, T26S, R30E and was drilled in 1987. The well has a reported depth to groundwater of 117.03 feet below the ground surface (ft bgs). A copy of the associated point of diversion is attached in Appendix C.

3.0 NMAC Regulatory Criteria

Per the NMOCD regulatory criteria established in 19.15.29.12 NMAC, the following criteria were utilized in assessing the site.

- Benzene: 10 milligrams per kilogram (mg/kg).
- Benzene, toluene, ethylbenzene, and total xylenes (BTEX): 50 mg/kg.
- TPH: 100 mg/kg (GRO + DRO + MRO).
- Chloride: 600 mg/kg.

4.0 Liner Inspection Activities

On July 23, 2024, and July 24, 2024, a third-party company was on-site to pressure wash the liner. On July 26, 2024, Carmona Resources, LLC conducted liner inspection activities to assess the liner's integrity within the facility. Prior to the liner inspection, the NMOCD division office was notified via web portal on July 23, 2024, per Subsection D of 19.15.29.12 NMAC. See Appendix B. Carmona Resources, LLC



personnel inspected the liner visually and found it intact with no integrity issues. Refer to the Photolog attached in Appendix A.

5.0 Conclusions

Based on the liner inspection throughout the facility, no further actions are required at the site. The final C-141 is attached, and Devon formally requests the closure of the spill. If you have any questions regarding this report or need additional information, please get in touch with us at 432-813-1992.

Sincerely,

Carmona Resources, LLC

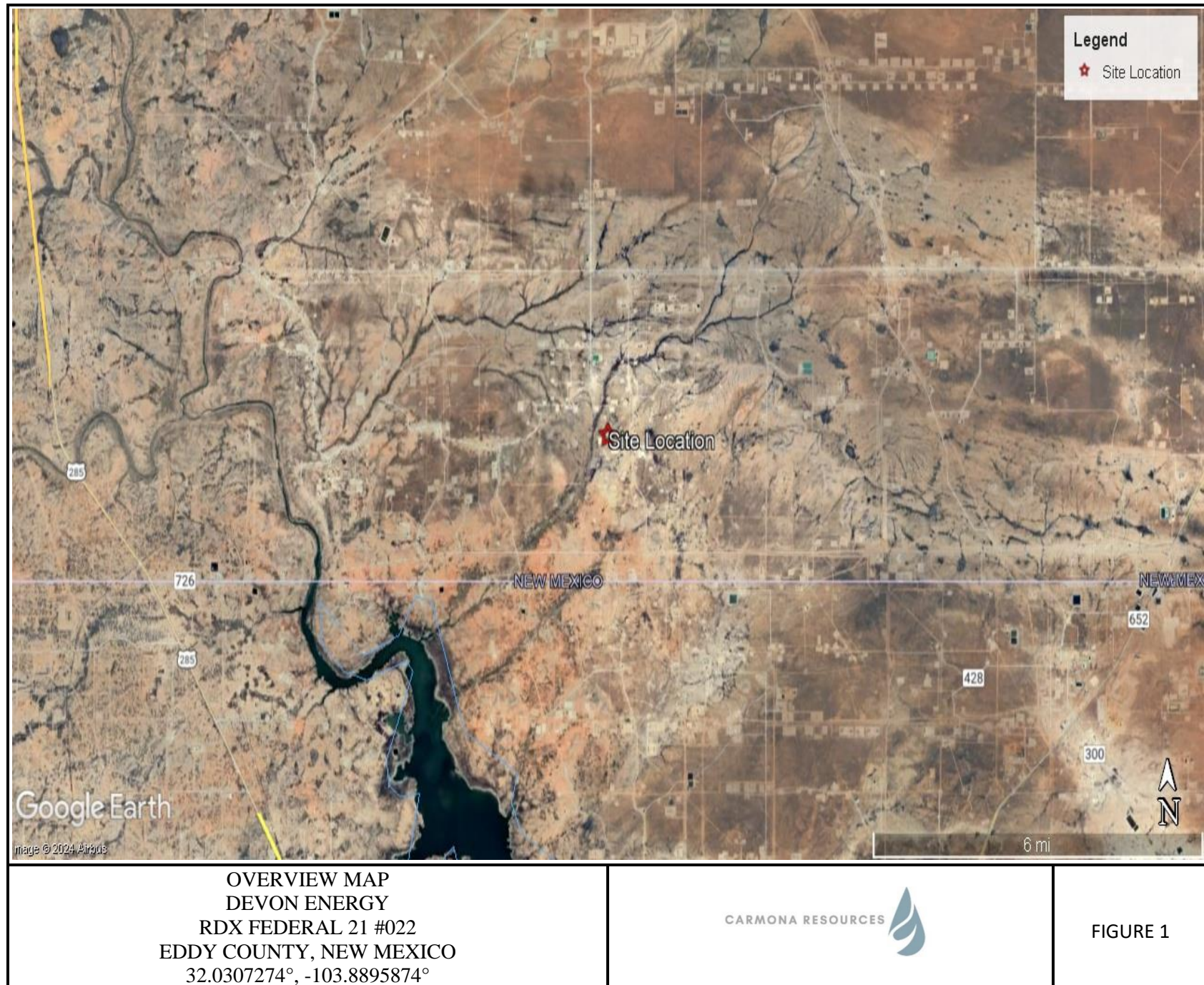
Mike Carmona
Environmental Manager

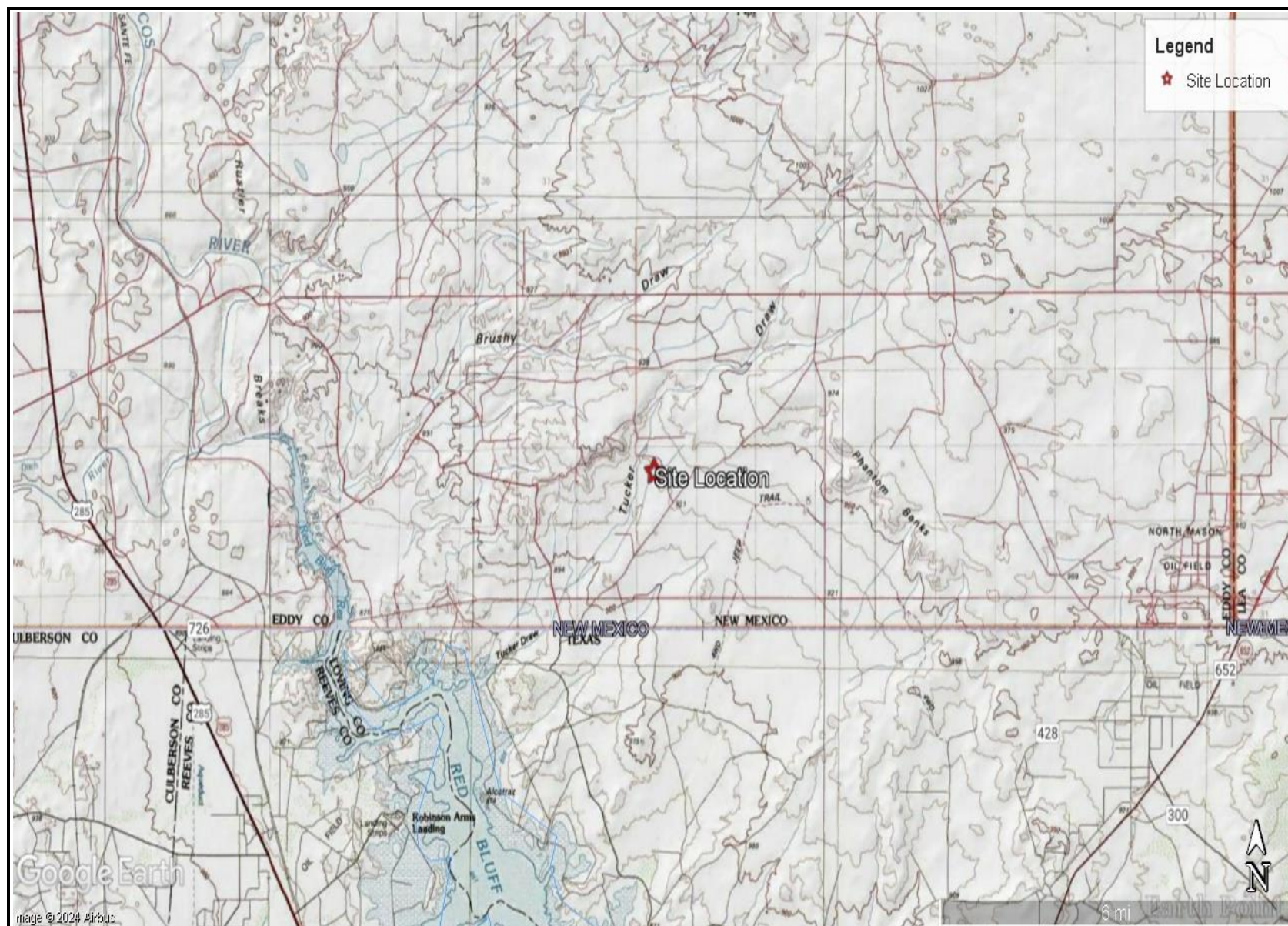
Devin Dominguez
Sr. Project Manager

FIGURES

CARMONA RESOURCES







TOPOGRAPHIC MAP
DEVON ENERGY
RDX FEDERAL 21 #022
EDDY COUNTY, NEW MEXICO
32.0307274°, -103.8895874°



FIGURE 2



SECONDARY CONTAINMENT MAP
DEVON ENERGY
RDX FEDERAL 21 #022
EDDY COUNTY, NEW MEXICO
32.0307274°, -103.8895874°



FIGURE 3

APPENDIX A

CARMONA RESOURCES



PHOTOGRAPHIC LOG

Devon Energy

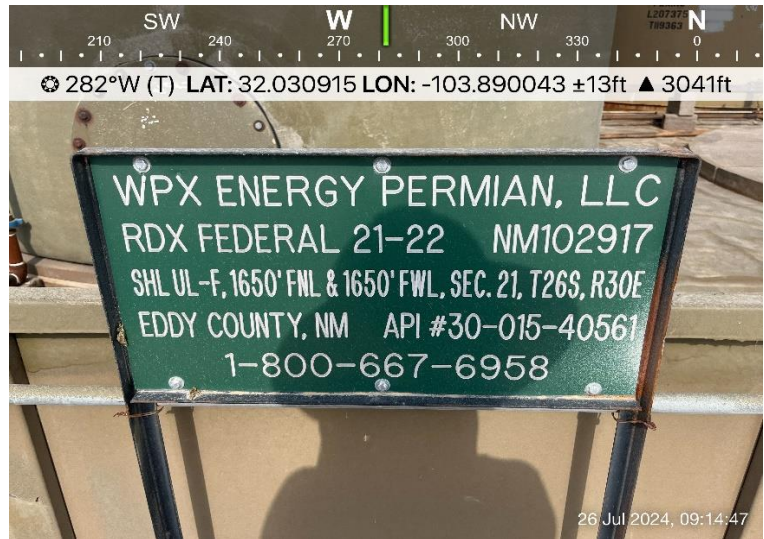
Photograph No. 1

Facility: RDX Federal 21 #022

County: Eddy County, New Mexico

Description:

View West, lease sign at facility pad.



Photograph No. 2

Facility: RDX Federal 21 #022

County: Eddy County, New Mexico

Description:

View Southeast, area of lined facility.



Photograph No. 3

Facility: RDX Federal 21 #022

County: Eddy County, New Mexico

Description:

View Northeast, area of lined facility.



PHOTOGRAPHIC LOG

Devon Energy

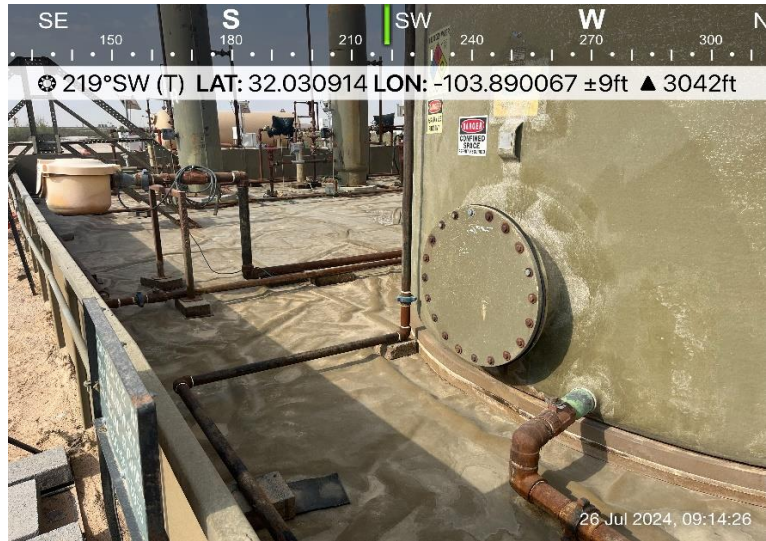
Photograph No. 4

Facility: RDX Federal 21 #022

County: Eddy County, New Mexico

Description:

View Southwest, area of lined facility.



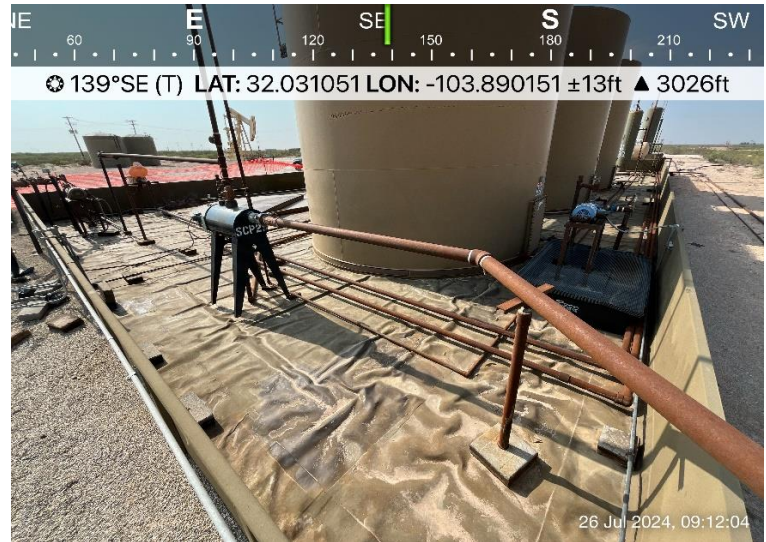
Photograph No. 5

Facility: RDX Federal 21 #022

County: Eddy County, New Mexico

Description:

View Southeast, area of lined facility.



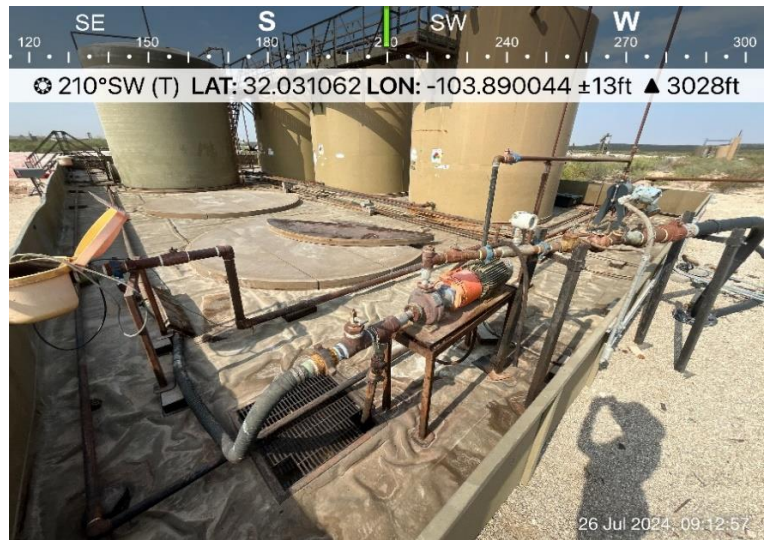
Photograph No. 6

Facility: RDX Federal 21 #022

County: Eddy County, New Mexico

Description:

View Southwest, area of lined facility.



PHOTOGRAPHIC LOG

Devon Energy

Photograph No. 7

Facility: RDX Federal 21 #022

County: Eddy County, New Mexico

Description:
View Northwest, area of lined facility.



Photograph No. 8

Facility: RDX Federal 21 #022

County: Eddy County, New Mexico

Description:
View Northeast, area of lined facility.



APPENDIX B

CARMONA RESOURCES



District I
1625 N. French Dr., Hobbs, NM 88240
Phone:(575) 393-6161 Fax:(575) 393-0720
District II
811 S. First St., Artesia, NM 88210
Phone:(575) 748-1283 Fax:(575) 748-9720
District III
1000 Rio Brazos Rd., Aztec, NM 87410
Phone:(505) 334-6178 Fax:(505) 334-6170
District IV
1220 S. St Francis Dr., Santa Fe, NM 87505
Phone:(505) 476-3470 Fax:(505) 476-3462

State of New Mexico
Energy, Minerals and Natural Resources
Oil Conservation Division
1220 S. St Francis Dr.
Santa Fe, NM 87505

QUESTIONS

Action 365574

QUESTIONS

Operator: WPX Energy Permian, LLC Devon Energy - Regulatory Oklahoma City, OK 73102	OGRID: 246289
	Action Number: 365574
	Action Type: [NOTIFY] Notification Of Release (NOR)

QUESTIONS

Location of Release Source <i>Please answer all the questions in this group.</i>	
Site Name	RDX FEDERAL 21 #022
Date Release Discovered	07/18/2024
Surface Owner	Federal

Incident Details <i>Please answer all the questions in this group.</i>	
Incident Type	Produced Water Release
Did this release result in a fire or is the result of a fire	No
Did this release result in any injuries	No
Has this release reached or does it have a reasonable probability of reaching a watercourse	No
Has this release endangered or does it have a reasonable probability of endangering public health	No
Has this release substantially damaged or will it substantially damage property or the environment	No
Is this release of a volume that is or may with reasonable probability be detrimental to fresh water	No

Nature and Volume of Release <i>Material(s) released, please answer all that apply below. Any calculations or specific justifications for the volumes provided should be attached to the follow-up C-141 submission.</i>	
Crude Oil Released (bbls) Details	Not answered.
Produced Water Released (bbls) Details	Cause: Overflow - Tank, Pit, Etc. Production Tank Produced Water Released: 50 BBL Recovered: 50 BBL Lost: 0 BBL.
Is the concentration of chloride in the produced water >10,000 mg/l	Yes
Condensate Released (bbls) Details	Not answered.
Natural Gas Vented (Mcf) Details	Not answered.
Natural Gas Flared (Mcf) Details	Not answered.
Other Released Details	Not answered.
Are there additional details for the questions above (i.e. any answer containing Other, Specify, Unknown, and/or Fire, or any negative lost amounts)	Not answered.

District I
1625 N. French Dr., Hobbs, NM 88240
Phone:(575) 393-6161 Fax:(575) 393-0720

District II
811 S. First St., Artesia, NM 88210
Phone:(575) 748-1283 Fax:(575) 748-9720

District III
1000 Rio Brazos Rd., Aztec, NM 87410
Phone:(505) 334-6178 Fax:(505) 334-6170

District IV
1220 S. St Francis Dr., Santa Fe, NM 87505
Phone:(505) 476-3470 Fax:(505) 476-3462

State of New Mexico
Energy, Minerals and Natural Resources
Oil Conservation Division
1220 S. St Francis Dr.
Santa Fe, NM 87505

QUESTIONS, Page 2

Action 365574

QUESTIONS (continued)

Operator: WPX Energy Permian, LLC Devon Energy - Regulatory Oklahoma City, OK 73102	OGRID: 246289
	Action Number: 365574
	Action Type: [NOTIFY] Notification Of Release (NOR)

QUESTIONS

Nature and Volume of Release (continued)	
Is this a gas only submission (i.e. only significant Mcf values reported)	No, according to supplied volumes this does not appear to be a "gas only" report.
Was this a major release as defined by Subsection A of 19.15.29.7 NMAC	Yes
Reasons why this would be considered a submission for a notification of a major release	From paragraph A. "Major release" determine using: (1) an unauthorized release of a volume, excluding gases, of 25 barrels or more.
With the implementation of the 19.15.27 NMAC (05/25/2021), venting and/or flaring of natural gas (i.e. gas only) are to be submitted on the C-129 form.	

Initial Response	
The responsible party must undertake the following actions immediately unless they could create a safety hazard that would result in injury.	
The source of the release has been stopped	True
The impacted area has been secured to protect human health and the environment	True
Released materials have been contained via the use of berms or dikes, absorbent pads, or other containment devices	True
All free liquids and recoverable materials have been removed and managed appropriately	True
If all the actions described above have not been undertaken, explain why	Not answered.
Per Paragraph 4 of Subsection B of 19.15.29.8 NMAC the responsible party may commence remediation immediately after discovery of a release. If remediation has begun, please prepare and attach a narrative of actions to date in the follow-up C-141 submission. If remedial efforts have been successfully completed or if the release occurred within a lined containment area (see 19.15.29.11(A)(5)(a) NMAC), please prepare and attach all information needed for closure evaluation in the follow-up C-141 submission.	

District I
1625 N. French Dr., Hobbs, NM 88240
Phone:(575) 393-6161 Fax:(575) 393-0720
District II
811 S. First St., Artesia, NM 88210
Phone:(575) 748-1283 Fax:(575) 748-9720
District III
1000 Rio Brazos Rd., Aztec, NM 87410
Phone:(505) 334-6178 Fax:(505) 334-6170
District IV
1220 S. St Francis Dr., Santa Fe, NM 87505
Phone:(505) 476-3470 Fax:(505) 476-3462

State of New Mexico
Energy, Minerals and Natural Resources
Oil Conservation Division
1220 S. St Francis Dr.
Santa Fe, NM 87505

ACKNOWLEDGMENTS

Action 365574

ACKNOWLEDGMENTS

Operator: WPX Energy Permian, LLC Devon Energy - Regulatory Oklahoma City, OK 73102	OGRID: 246289
	Action Number: 365574
	Action Type: [NOTIFY] Notification Of Release (NOR)

ACKNOWLEDGMENTS

<input checked="" type="checkbox"/>	I acknowledge that I am authorized to submit notification of a release on behalf of my operator.
<input checked="" type="checkbox"/>	I acknowledge that upon submitting this application, I will be creating a new incident file (assigned to my operator) to track the notification(s) and corrective action(s) for a release, pursuant to NMAC 19.15.29.
<input checked="" type="checkbox"/>	I acknowledge that creating a new incident file will require my operator to file subsequent submission(s) of form "C-141, Application for administrative approval of a release notification and corrective action", pursuant to NMAC 19.15.29.
<input checked="" type="checkbox"/>	I hereby certify that the information given above is true and complete to the best of my knowledge and understand that pursuant to OCD rules and regulations all operators are required to report and/or file certain release notifications and perform corrective actions for releases which may endanger public health or the environment.
<input checked="" type="checkbox"/>	I acknowledge the fact that the acceptance of a C-141 report by the OCD does not relieve the operator of liability should their operations have failed to adequately investigate and remediate contamination that pose a threat to groundwater, surface water, human health or the environment.
<input checked="" type="checkbox"/>	I acknowledge the fact that, in addition, OCD acceptance of a C-141 report does not relieve the operator of responsibility for compliance with any other federal, state, or local laws and/or regulations.

District I
1625 N. French Dr., Hobbs, NM 88240
Phone:(575) 393-6161 Fax:(575) 393-0720
District II
811 S. First St., Artesia, NM 88210
Phone:(575) 748-1283 Fax:(575) 748-9720
District III
1000 Rio Brazos Rd., Aztec, NM 87410
Phone:(505) 334-6178 Fax:(505) 334-6170
District IV
1220 S. St Francis Dr., Santa Fe, NM 87505
Phone:(505) 476-3470 Fax:(505) 476-3462

State of New Mexico
Energy, Minerals and Natural Resources
Oil Conservation Division
1220 S. St Francis Dr.
Santa Fe, NM 87505

CONDITIONS

Action 365574

CONDITIONS

Operator: WPX Energy Permian, LLC Devon Energy - Regulatory Oklahoma City, OK 73102	OGRID: 246289
	Action Number: 365574
	Action Type: [NOTIFY] Notification Of Release (NOR)

CONDITIONS

Created By	Condition	Condition Date
jralej	When submitting future reports regarding this release, please submit the calculations used or specific justification for the volumes reported on the initial C-141.	7/19/2024

District I
1625 N. French Dr., Hobbs, NM 88240
Phone:(575) 393-6161 Fax:(575) 393-0720
District II
811 S. First St., Artesia, NM 88210
Phone:(575) 748-1283 Fax:(575) 748-9720
District III
1000 Rio Brazos Rd., Aztec, NM 87410
Phone:(505) 334-6178 Fax:(505) 334-6170
District IV
1220 S. St Francis Dr., Santa Fe, NM 87505
Phone:(505) 476-3470 Fax:(505) 476-3462

State of New Mexico
Energy, Minerals and Natural Resources
Oil Conservation Division
1220 S. St Francis Dr.
Santa Fe, NM 87505

QUESTIONS

Action 366328

QUESTIONS

Operator: WPX Energy Permian, LLC Devon Energy - Regulatory Oklahoma City, OK 73102	OGRID: 246289
	Action Number: 366328
	Action Type: [NOTIFY] Notification Of Liner Inspection (C-141L)

QUESTIONS

Prerequisites	
Incident ID (n#)	nAPP2420128041
Incident Name	NAPP2420128041 RDX FEDERAL 21 #022 @ 30-015-40561
Incident Type	Produced Water Release
Incident Status	Initial C-141 Approved
Incident Well	[30-015-40561] RDX FEDERAL 21 #022

Location of Release Source	
Site Name	RDX FEDERAL 21 #022
Date Release Discovered	07/18/2024
Surface Owner	Federal

Liner Inspection Event Information	
Please answer all the questions in this group.	
What is the liner inspection surface area in square feet	4,700
Have all the impacted materials been removed from the liner	Yes
Liner inspection date pursuant to Subparagraph (a) of Paragraph (5) of Subsection A of 19.15.29.11 NMAC	07/26/2024
Time liner inspection will commence	08:00 AM
Please provide any information necessary for observers to liner inspection	Miranda Milwee 432-813-9652
Please provide any information necessary for navigation to liner inspection site	From the intersection of NM-128 and Orla Rd trvl S on Orla Rd for 15 mi, trn R onto Stateline Rd. Trvl W for 9.51 mi trn R and trvl NW on Unnamed Lease Rd for 1.59 mi. Trn L on Unnamed Lease Rd, trvl W for 0.43 mi. Trn L on Unnamed Lease Rd and travel onto pad. Arrive at GPS coordinates.

District I
1625 N. French Dr., Hobbs, NM 88240
Phone:(575) 393-6161 Fax:(575) 393-0720
District II
811 S. First St., Artesia, NM 88210
Phone:(575) 748-1283 Fax:(575) 748-9720
District III
1000 Rio Brazos Rd., Aztec, NM 87410
Phone:(505) 334-6178 Fax:(505) 334-6170
District IV
1220 S. St Francis Dr., Santa Fe, NM 87505
Phone:(505) 476-3470 Fax:(505) 476-3462

State of New Mexico
Energy, Minerals and Natural Resources
Oil Conservation Division
1220 S. St Francis Dr.
Santa Fe, NM 87505

CONDITIONS

Action 366328

CONDITIONS

Operator: WPX Energy Permian, LLC Devon Energy - Regulatory Oklahoma City, OK 73102	OGRID: 246289
	Action Number: 366328
	Action Type: [NOTIFY] Notification Of Liner Inspection (C-141L)

CONDITIONS

Created By	Condition	Condition Date
jraleay	Failure to notify the OCD of liner inspections including any changes in date/time per the requirements of 19.15.29.11.A(5)(a)(ii) NMAC, may result in the inspection not being accepted.	7/23/2024

From: [Miranda Milwee](#)
To: OCD.Enviro@emnrd.nm.gov <OCD.Enviro@emnrd.nm.gov>
Cc: jim.raley@dvn.com; [Mike Carmona](#); [Conner Moehring](#); [Devin Dominguez](#); [Clint Merritt](#); [Ashton Thielke](#); [PaulB](#)
Subject: Devon - RDX 21-22 Liner Inspection
Date: Tuesday, July 23, 2024 7:28:00 AM
Attachments: [image001.png](#)

All,

This email serves as a notification for a liner inspection at the site referenced below. The notification will be submitted through the NMOCD portal as well.

Incident Number: nAPP2420128041
Devon Energy - RDX Fed 21-22
GPS Coordinates: 32.0307274, -103.8895874
Eddy County, New Mexico

Square Feet ~ 4,700
Inspection Day – Friday – 07/26/2024
Time – 8:00 AM Mountain Time
Inspector Information: Miranda Milwee 432-813-9652
Driving Directions: From the intersection of NM-128 and Orla Rd trvl S on Orla Rd for 15 mi, trn R onto Stateline Rd. Trvl W for 9.51 mi trn R and trvl NW on Unnamed Lease Rd for 1.59 mi. Trn L on Unnamed Lease Rd, trvl W for 0.43 mi. Trn L on Unnamed Lease Rd and travel onto pad. Arrive at GPS coordinates.

Please feel free to reach out if you have any questions or need any additional information.

Thank you,

Miranda Milwee
310 West Wall Street, Suite 500
Midland TX, 79701
M: 432-813-9652
MilweeM@carmonaresources.com

CARMONA RESOURCES



Incident ID	
District RP	
Facility ID	
Application ID	

Closure

The responsible party must attach information demonstrating they have complied with all applicable closure requirements and any conditions or directives of the OCD. This demonstration should be in the form of a comprehensive report (electronic submittals in .pdf format are preferred) including a scaled site map, sampling diagrams, relevant field notes, photographs of any excavation prior to backfilling, laboratory data including chain of custody documents of final sampling, and a narrative of the remedial activities. Refer to 19.15.29.12 NMAC.

Closure Report Attachment Checklist: *Each of the following items must be included in the closure report.*

- ☐ A scaled site and sampling diagram as described in 19.15.29.11 NMAC
- ☐ Photographs of the remediated site prior to backfill or photos of the liner integrity if applicable (Note: appropriate OCD District office must be notified 2 days prior to liner inspection)
- ☐ Laboratory analyses of final sampling (Note: appropriate ODC District office must be notified 2 days prior to final sampling)
- ☐ Description of remediation activities

I hereby certify that the information given above is true and complete to the best of my knowledge and understand that pursuant to OCD rules and regulations all operators are required to report and/or file certain release notifications and perform corrective actions for releases which may endanger public health or the environment. The acceptance of a C-141 report by the OCD does not relieve the operator of liability should their operations have failed to adequately investigate and remediate contamination that pose a threat to groundwater, surface water, human health or the environment. In addition, OCD acceptance of a C-141 report does not relieve the operator of responsibility for compliance with any other federal, state, or local laws and/or regulations. The responsible party acknowledges they must substantially restore, reclaim, and re-vegetate the impacted surface area to the conditions that existed prior to the release or their final land use in accordance with 19.15.29.13 NMAC including notification to the OCD when reclamation and re-vegetation are complete.

Printed Name: _____ Title: _____

Signature:  _____ Date: 8/2/2024 _____

email: _____ Telephone: _____

OCD Only

Received by: _____ Date: _____

Closure approval by the OCD does not relieve the responsible party of liability should their operations have failed to adequately investigate and remediate contamination that poses a threat to groundwater, surface water, human health, or the environment nor does not relieve the responsible party of compliance with any other federal, state, or local laws and/or regulations.

Closure Approved by: _____ Date: _____

Printed Name: _____ Title: _____

APPENDIX C

CARMONA RESOURCES

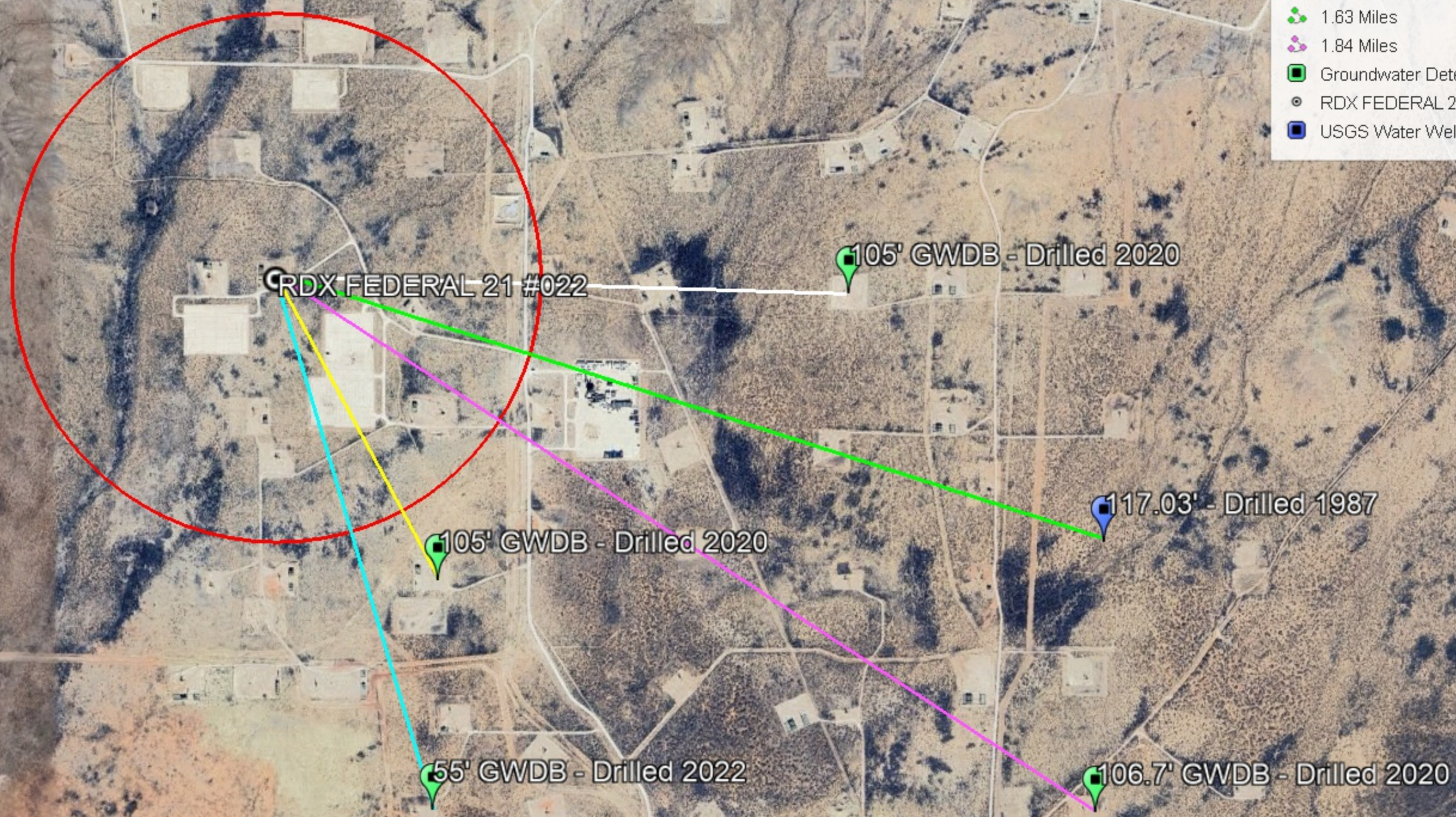


Nearest water well

Devon Energy

Legend

- 0.50 Mile Radius
- 0.65 Miles
- 1.05 Miles
- 1.08 Miles
- 1.63 Miles
- 1.84 Miles
- Groundwater Determination Bore
- RDX FEDERAL 21 #022
- USGS Water Well



medium karst

Devon Energy

Legend

- Medium
- RDX FEDERAL 21 #022

RDX FEDERAL 21 #022





New Mexico Office of the State Engineer

Water Column/Average Depth to Water

(A CLW##### in the POD suffix indicates the POD has been replaced & no longer serves a water right file.)

(R=POD has been replaced,
O=orphaned,
C=the file is closed)

(quarters are 1=NW 2=NE 3=SW 4=SE)

(quarters are smallest to largest)

(NAD83 UTM in meters)

(In feet)

POD Number	POD Sub-Code	basin	County	Q 64	Q 16	Q 4	Sec	Tws	Rng	X	Y	Distance	Depth Well	Depth Water	Water Column
C 04629 POD1	CUB	ED		4	3	4	21	26S	30E	605381	3543462	1059			
C 04798 POD8	CUB	ED		2	4	1	16	26S	30E	604956	3545986	1608	35		
C 04625 POD1	CUB	ED		1	3	2	28	26S	30E	605340	3542781	1671	55		
C 04068 POD1	CUB	ED		1	3	1	16	26S	30E	604397	3546018	1699			
C 04798 POD9	CUB	ED		2	3	2	16	26S	30E	605453	3545978	1706	35		
C 04798 POD6	CUB	ED		2	3	2	16	26S	30E	605432	3545989	1710	35		
C 04798 POD10	CUB	ED		2	3	2	16	26S	30E	605453	3545985	1713	10		
C 04798 POD7	CUB	ED		2	3	2	16	26S	30E	605445	3545993	1718	35		
C 04798 POD11	CUB	ED		2	3	2	16	26S	30E	605461	3545989	1720	10		
C 04798 POD12	CUB	ED		2	3	2	16	26S	30E	605464	3545993	1724	35		
C 04798 POD2	CUB	ED		1	4	2	16	26S	30E	605590	3546051	1826	35		
C 04798 POD4	CUB	ED		1	4	2	16	26S	30E	605598	3546050	1829	35		
C 04798 POD3	CUB	ED		1	4	2	16	26S	30E	605595	3546056	1833	35		
C 04798 POD1	CUB	ED		1	4	2	16	26S	30E	605592	3546061	1836	35		
C 04798 POD5	CUB	ED		1	4	2	16	26S	30E	605604	3546062	1841	35		
C 04655 POD1	CUB	ED		1	2	2	16	26S	30E	605726	3546472	2267			
C 04802 POD1	CUB	ED		4	4	3	33	26S	30E	605058	3541059	3327	105		
C 03483	C	ED		4	4	4	05	26S	30E	604296	3548251	3910	700	200	500
C 03581 POD1	CUB	ED		4	4	4	05	26S	30E	604298	3548291	3950	800	320	480

Average Depth to Water: **260 feet**

Minimum Depth: **200 feet**

Maximum Depth: **320 feet**

Record Count: 19

UTMNAD83 Radius Search (in meters):

Easting (X): 604852.3

Northing (Y): 3544380.52

Radius: 4000

The data is furnished by the NMOSE/ISC and is accepted by the recipient with the expressed understanding that the OSE/ISC make no warranties, expressed or implied, concerning the accuracy, completeness, reliability, usability, or suitability for any particular purpose of the data.

5/29/24 12:19 PM

Page 1 of 1

WATER COLUMN/ AVERAGE
DEPTH TO WATER


HRL
COMPLIANCE
SOLUTIONS
BORING LOG/MONITORING WELL COMPLETION DIAGRAM

Boring/Well Number:		MW-1		Location:		RDX Federal Com 21-43	
Date:		12/9/2020		Client:		WPX Energy	
Logged By:		J. Linn, P.G.		Drilled By:		Talon LPE	
Drilling Method:		Sampling Method:		Seal Type:		Seal Depth Interval:	
Air Rotary		None		None		None	
Gravel Pack Type:		Gravel Pack Depth Interval:		Latitude:		Longitude:	
10/20 Sand		3 Bags		32.022571		-103.884371	
Casing Type:		Diameter:		Depth Interval:		Boring Total Depth (ft. BGS):	
PVC		2-inch		0-100 feet bgs		110	
Screen Type:		Slot:		Diameter:		Depth Interval:	
PVC		0.010-inch		2-inch		100 - 105 ft	
Well Total Depth (ft. BGS):		Depth to Water (ft. BTWC):		DTW Date:			
105		> 105		12/16/2020			

Depth Interval (ft)	Recovery (ft)	Plasticity	Moisture	Odor	Staining	PID (ppm)	USCS	Sample ID	Lithology/Remarks	Well Completion		
0	NM	L	D	N	N	NM	SP	NS	Pale orange to tan poorly graded fine sand			
5												
10												
15												
20	NM	H	D	N	N	NM	CL	NS	Pale orange/tan/pale red clay, dry, with silt, fine sand, and minor caliche			
25	NM	L	D	N	N	NM	SP	NS	Pale orange to pale red poorly graded fine sand			
30												
35												
40												
45	NM	L	D	N	N	NM	SP	NS	Golden yellow poorly graded fine sand with minor silt and clay			
50												
55												
60												
65	NM	L	D	N	N	NM	SP	NS	Pale orange to pale red poorly graded fine sand with minor silt/clay			
70												
75												
80												
85	NM	M	D	N	N	NM	SC	NS	Buff to orange color fine sand with medium sand and clay			
90												
95												
100												
105	NM	H	D	N	N	NM	SC	NS	Golden yellow and buff colored clay with fine sand - TD Boring: 110' BGS; Sand 110' - 105' BGS			

Released to Imaging: 8/12/2024 10:55:52 AM



WELL RECORD & LOG

OFFICE OF THE STATE ENGINEER

www.ose.state.nm.us


OSE DTI AUG 8 2022 AM 10:19

1. GENERAL AND WELL LOCATION	OSE POD NO. (WELL NO.) POD 1 (TW-1)		WELL TAG ID NO. N/A		OSE FILE NO(S). C-4625		
	WELL OWNER NAME(S) Devon Energy				PHONE (OPTIONAL) 575-748-1838		
	WELL OWNER MAILING ADDRESS 6488 7 Rivers Hwy				CITY Artesia	STATE NM	ZIP 88210
	WELL LOCATION (FROM GPS)	DEGREES LATITUDE 32	MINUTES 0	SECONDS 58.53 N	* ACCURACY REQUIRED: ONE TENTH OF A SECOND		
		LONGITUDE 103	53	4.54 W	* DATUM REQUIRED: WGS 84		
DESCRIPTION RELATING WELL LOCATION TO STREET ADDRESS AND COMMON LANDMARKS - PLSS (SECTION, TOWNSHIP, RANGE) WHERE AVAILABLE NW SW NE Sec.28 T26S R30S NMPM							
2. DRILLING & CASING INFORMATION	LICENSE NO. 1249		NAME OF LICENSED DRILLER Jackie D. Atkins			NAME OF WELL DRILLING COMPANY Atkins Engineering Associates, Inc.	
	DRILLING STARTED 6/15/2022		DRILLING ENDED 6/15/2022		DEPTH OF COMPLETED WELL (FT) Temporary Well	BORE HOLE DEPTH (FT) ±55	DEPTH WATER FIRST ENCOUNTERED (FT) n/a
	COMPLETED WELL IS: <input type="checkbox"/> ARTESIAN <input checked="" type="checkbox"/> DRY HOLE <input type="checkbox"/> SHALLOW (UNCONFINED)					STATIC WATER LEVEL IN COMPLETED WELL (FT) n/a	DATE STATIC MEASURED 6/15/22, 7/12/22
	DRILLING FLUID: <input type="checkbox"/> AIR <input type="checkbox"/> MUD ADDITIVES - SPECIFY:						
	DRILLING METHOD: <input type="checkbox"/> ROTARY <input type="checkbox"/> HAMMER <input type="checkbox"/> CABLE TOOL <input checked="" type="checkbox"/> OTHER - SPECIFY: Hollow Stem Auger					CHECK HERE IF PITLESS ADAPTER IS INSTALLED <input type="checkbox"/>	
	DEPTH (feet bgl) FROM TO		BORE HOLE DIAM. (inches)	CASING MATERIAL AND/OR GRADE (include each casing string, and note sections of screen)	CASING CONNECTION TYPE (add coupling diameter)	CASING INSIDE DIAM. (inches)	CASING WALL THICKNESS (inches)
	0 55		±6.5	Boring-HSA	--	--	--
3. ANNULAR MATERIAL	DEPTH (feet bgl) FROM TO		BORE HOLE DIAM. (inches)	LIST ANNULAR SEAL MATERIAL AND GRAVEL PACK SIZE-RANGE BY INTERVAL		AMOUNT (cubic feet)	METHOD OF PLACEMENT

FOR OSE INTERNAL USE

WR-20 WELL RECORD & LOG (Version 01/28/2022)

FILE NO. C-04625	POD NO. 1	TRN NO. 726170
LOCATION 26S.30E.28.1.3.2	WELL TAG ID NO. —	PAGE 1 OF 2

4. HYDROGEOLOGIC LOG OF WELL	DEPTH (feet bgl)		THICKNESS (feet)	COLOR AND TYPE OF MATERIAL ENCOUNTERED - INCLUDE WATER-BEARING CAVITIES OR FRACTURE ZONES (attach supplemental sheets to fully describe all units)	WATER BEARING? (YES / NO)	ESTIMATED YIELD FOR WATER- BEARING ZONES (gpm)
	FROM	TO				
	0	20	20	Sand, Fine-grained, poorly graded, 5 YR 5/6, Reddish Yellow	Y ✓ N	
	20	40	20	Sand, Fine-grained, poorly graded, with clay, 2.5 YR 5/6, Red	Y ✓ N	
	40	55	15	Sand, Fine-grained, poorly graded, with clay, Reddish Yellow	Y ✓ N	
					Y N	
					Y N	
					Y N	
					Y N	
					Y N	
					Y N	
					Y N	
					Y N	
					Y N	
					Y N	
					Y N	
					Y N	
					Y N	
					Y N	
					Y N	
					Y N	
					Y N	
METHOD USED TO ESTIMATE YIELD OF WATER-BEARING STRATA: <input type="checkbox"/> PUMP <input type="checkbox"/> AIR LIFT <input type="checkbox"/> BAILER <input type="checkbox"/> OTHER – SPECIFY:					TOTAL ESTIMATED WELL YIELD (gpm): 0.00	
5. TEST; RIG SUPERVISION	WELL TEST	TEST RESULTS - ATTACH A COPY OF DATA COLLECTED DURING WELL TESTING, INCLUDING DISCHARGE METHOD, START TIME, END TIME, AND A TABLE SHOWING DISCHARGE AND DRAWDOWN OVER THE TESTING PERIOD.				
	MISCELLANEOUS INFORMATION: Temporary well material removed and soil boring backfilled using drill cuttings from total depth to ten feet below ground surface(bgs), then hydrated bentonite chips ten feet bgs to surface.					
	PRINT NAME(S) OF DRILL RIG SUPERVISOR(S) THAT PROVIDED ONSITE SUPERVISION OF WELL CONSTRUCTION OTHER THAN LICENSEE: Shane Eldridge, Cameron Pruitt					
6. SIGNATURE	THE UNDERSIGNED HEREBY CERTIFIES THAT, TO THE BEST OF HIS OR HER KNOWLEDGE AND BELIEF, THE FOREGOING IS A TRUE AND CORRECT RECORD OF THE ABOVE DESCRIBED HOLE AND THAT HE OR SHE WILL FILE THIS WELL RECORD WITH THE STATE ENGINEER AND THE PERMIT HOLDER WITHIN 30 DAYS AFTER COMPLETION OF WELL DRILLING: <div style="display: flex; justify-content: space-between;"> <div>  SIGNATURE OF DRILLER / PRINT SIGNEE NAME </div> <div> Jackie D. Atkins DATE </div> </div>					

FOR OSE INTERNAL USE		WR-20 WELL RECORD & LOG (Version 01/28/2022)	
FILE NO. <u>C-04625</u>	POD NO. <u>1</u>	TRN NO. <u>726170</u>	
LOCATION <u>765.30E.28 13.7</u>		WELL TAG ID NO. <u>—</u>	PAGE 2 OF 2



2904 W 2nd St.
Roswell, NM 88201
voice: 575.624.2420
fax: 575.624.2421
www.atkinseng.com

August 4, 2022

DII-NMOSE
1900 W 2nd Street
Roswell, NM 88201

Hand Delivered to the DII Office of the State Engineer

Re: Well Record C-4625 Pod1

To whom it may concern:

Attached please find a well log & record and a plugging record, in duplicate, for a one (1) soil borings, C-4625 Pod1.

If you have any questions, please contact me at 575.499.9244 or lucas@atkinseng.com.


Sincerely,

A handwritten signature in black ink that reads "Lucas Middleton". The signature is written in a cursive style.

Lucas Middleton

Enclosures: as noted above

QSE DIT AUG 8 2022 PM 10:19

 HRL COMPLIANCE SOLUTIONS							BORING LOG/MONITORING WELL COMPLETION DIAGRAM						
							Boring/Well Number: MW-1			Location: Ross Draw Unit #38			
							Date: 12/8/2020			Client: WPX Energy			
Drilling Method: Air Rotary			Sampling Method: None				Logged By: J. Linn, PG			Drilled By: Talon LPE			
Gravel Pack Type: 10/20 Sand			Gravel Pack Depth Interval: 3 Bags				Seal Type: None		Seal Depth Interval: None		Latitude: 32.030300		
Casing Type: PVC		Diameter: 2-inch		Depth Interval: 0-100 feet bgs			Boring Total Depth (ft. BGS): 105			Longitude: -103.871338			
Screen Type: PVC		Slot: 0.010-inch		Diameter: 2-inch		Depth Interval: 100-105 ft		Well Total Depth (ft. BGS): 105			Depth to Water (ft. BTOC): > 105		
DTW Date: 12/16/2020													
Depth Interval (ft)	Recovery (ft)	Plasticity	Moisture	Odor	Staining	PID (ppm)	USCS	Sample ID	Lithology/Remarks			Well Completion	
0	NM	L	D	N	N	NM	SW	NS	Pale orange/pale pink to buff colored fine sand with minor medium and coarse sand				
5													
10													
15													
20	NM	L	D	N	N	NM	SP	NS	Pale orange/pale pink poorly graded fine sand				
25													
30													
35	NM	L	D	N	N	NM	SP	NS	Tan/pale brown/pale orange poorly graded fine sand				
40													
45													
50													
55													
60													
65	NM	L	D	N	N	NM	SP	NS	Brick red brown poorly graded fine sand				
70													
75													
80													
85													
90													
95	NM	L	D	N	N	NM	SP	NS	Tan/pale brown/pale orange poorly graded fine sand - TD 105' BGS				
100													



USGS Home
Contact USGS
Search USGS

National Water Information System: Web Interface

USGS Water Resources

Data Category:
Groundwater

Geographic Area:
New Mexico

GO

Click to hideNews Bulletins

- Explore the NEW [USGS National Water Dashboard](#) interactive map to access real-time water data from over 13,500 stations nationwide.
- [Full News](#)

Groundwater levels for New Mexico

Click to hide state-specific text

Important: [Next Generation Monitoring Location Page](#)

Search Results -- 1 sites found

Agency code = usgs
site_no list =

- 320125103514701

Minimum number of levels = 1
[Save file of selected sites](#) to local disk for future upload

USGS 320125103514701 26S.30E.22.44124

Eddy County, New Mexico
Latitude 32°01'25", Longitude 103°51'47" NAD27
Land-surface elevation 3,044 feet above NGVD29
This well is completed in the Pecos River Basin alluvial aquifer (N100PCSRVR) national aquifer.

Output formats

Table of data
Tab-separated data
Graph of data
Reselect period

Date	Time	? Water-level date-time accuracy	? Parameter code	Water level, feet below land surface	Water level, feet above specific vertical datum	Referenced vertical datum	? Status	? Method of measurement	? Measuring agency	? Source of measurement
1987-10-21			D	62610	2926.97	NGVD29	1		S	
1987-10-21			D	62611	2928.54	NAVD88	1		S	
1987-10-21			D	72019	117.03		1		S	

Explanation

Section	Code	Description
Water-level date-time accuracy	D	Date is accurate to the Day
Parameter code	62610	Groundwater level above NGVD 1929, feet
Parameter code	62611	Groundwater level above NAVD 1988, feet
Parameter code	72019	Depth to water level, feet below land surface
Referenced vertical datum	NAVD88	North American Vertical Datum of 1988
Referenced vertical datum	NGVD29	National Geodetic Vertical Datum of 1929
Status	1	Static
Method of measurement	S	Steel-tape measurement.


Section	Code	Description
Measuring agency		Not determined
Source of measurement		Not determined
Water-level approval status	A	Approved for publication -- Processing and review completed.

- [Questions or Comments](#)
[Automated retrievals](#)
[Help](#)
[Data Tips](#)
[Explanation of terms](#)
[Subscribe for system changes](#)
[News](#)

[Accessibility](#) [FOIA](#) [Privacy](#) [Policies and Notices](#)
[U.S. Department of the Interior](#) | [U.S. Geological Survey](#)
Title: Groundwater for New Mexico: Water Levels
URL: <https://nwis.waterdata.usgs.gov/nm/nwis/gwlevels?>



Page Contact Information: [New Mexico Water Data Maintainer](#)
Page Last Modified: 2023-11-22 08:48:02 EST
0.28 0.24 nadww01

		Drilling Well Number: MW-1		Location: Ross Draw Unit #55	
		Date: 12/9/2020		Client: WPX Energy	
Drilling Method: Air Rotary		Sampling Method: None		Logged By: J. Linn, PG	
Gravel Pack Type: 10/20 Sand		Gravel Pack Depth Interval: 3 Bags		Drilled By: Talon LPE	
Casing Type: PVC		Diameter: 2-inch		Seal Type: None	
		Depth Interval: 0-101'7"		Seal Depth Interval: None	
Screen Type: PVC		Slot: 0.010-inch		Latitude: 32.016165	
		Diameter: 2-inch		Longitude: -103.86346	
		Depth Interval: 101'7" - 106'7"		Boring Total Depth (ft. BGS): 106'7"	
				Well Total Depth (ft. BTGC): 106'7"	
				Depth to Water (ft. BTWC): >106' 7"	
				DTW Date: 12/16/2020	

Depth Interval (ft)	Recovery (ft)	Plasticity	Moisture	Odor	Staining	PTD (ppm)	USCS	Sample ID	Lithology/Remarks	Well Completion	
0	NM	L	D	N	N	NM	SP	NS	Pale pink to buff colored poorly graded sand with minor silt		
5											
10											
15											
20	NM	L	D	N	N	NM	SW	NS	Pale tan orange well graded fine sand with minor medium and coarse sand		
25											
30											
35											
40	NM	L	D	N	N	NM	SP	NS	Pale orange brown poorly graded fine sand with minor gravel		
45											
50											
55											
60											
65											
70											
75											
80	NM	L	D	N	N	NM	SP	NS	Grey poorly graded fine sand with minor gravel		
85											
90											
95											
100	NM	M	D	N	N	NM	SC	NS	Dark grey fine sand with moderate silt and clay - TD 106'7"		
106'7"											

FEMA National Flood Hazard Layer (NFHL)



FEMA flood layer

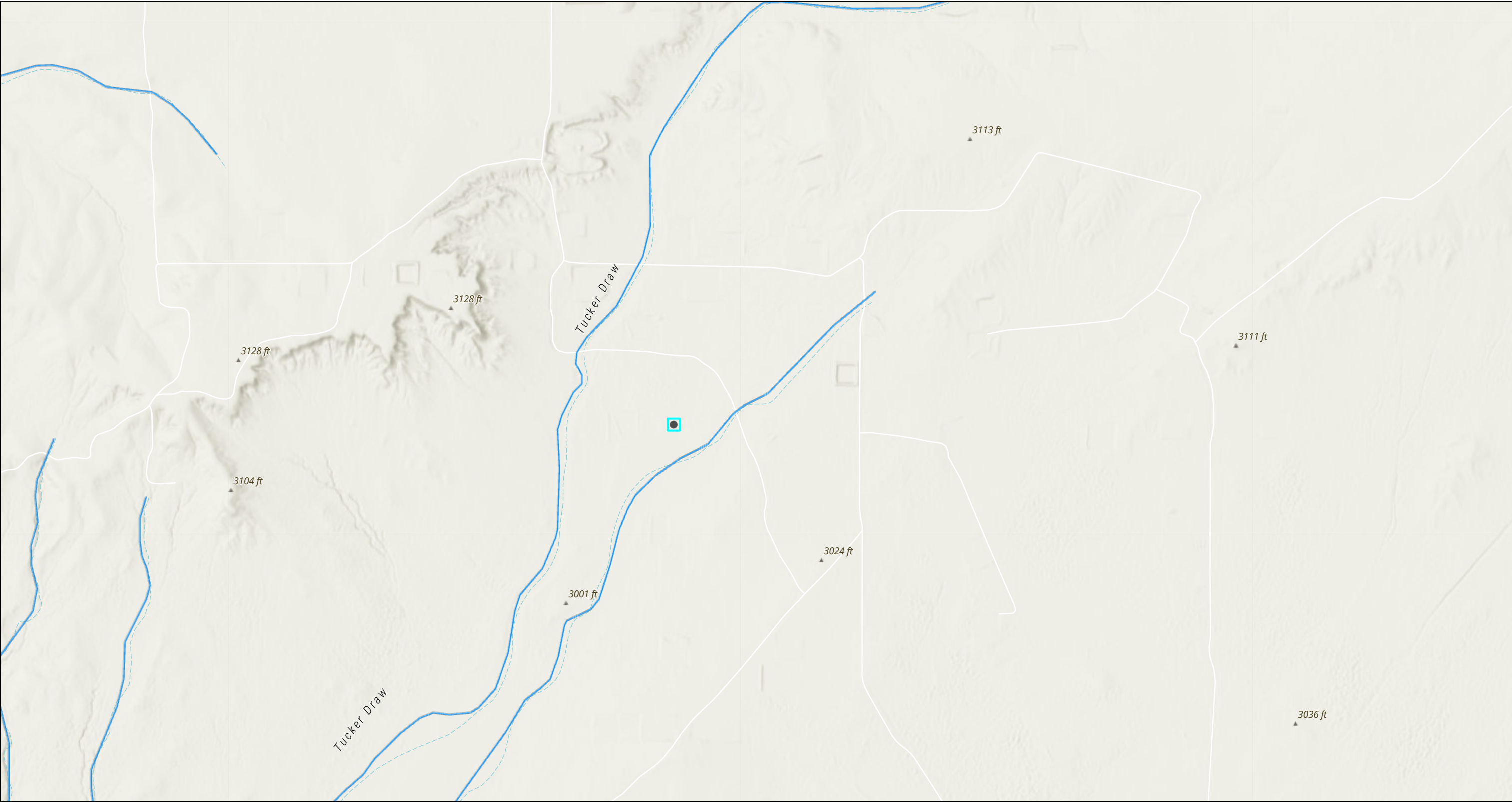
Bureau of Land Management, Texas Parks & Wildlife, Esri, HERE, Garmin, INCREMENT P, Intermap, USGS, METI/NASA, EPA, USDA

FEMA National Flood Hazard Layer (NFHL)



Maxar | Esri Community Maps Contributors, Texas Parks & Wildlife, © OpenStreetMap, Microsoft, CONANP, Esri, TomTom, Garmin, SafeGraph, GeoTechnologies, Inc, METI/NASA, USGS, EPA, NPS, US Census Bureau, USDA, USFWS

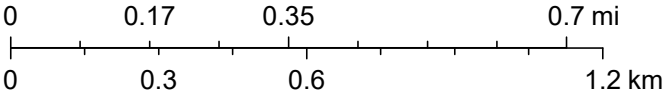
RDX FEDERAL 21 #022 (05.26.2024)



5/29/2024, 1:14:08 PM

— OSE Streams

1:18,056



Esri, NASA, NGA, USGS, FEMA, Esri Community Maps Contributors, Texas Parks & Wildlife, CONANP, Esri, TomTom, Garmin, SafeGraph, GeoTechnologies, Inc, METI/NASA, USGS, EPA, NPS, US Census Bureau, USDA, USFWS, NM OSE

District I
1625 N. French Dr., Hobbs, NM 88240
Phone:(575) 393-6161 Fax:(575) 393-0720
District II
811 S. First St., Artesia, NM 88210
Phone:(575) 748-1283 Fax:(575) 748-9720
District III
1000 Rio Brazos Rd., Aztec, NM 87410
Phone:(505) 334-6178 Fax:(505) 334-6170
District IV
1220 S. St Francis Dr., Santa Fe, NM 87505
Phone:(505) 476-3470 Fax:(505) 476-3462

State of New Mexico
Energy, Minerals and Natural Resources
Oil Conservation Division
1220 S. St Francis Dr.
Santa Fe, NM 87505

QUESTIONS

Action 369708

QUESTIONS

Operator: WPX Energy Permian, LLC Devon Energy - Regulatory Oklahoma City, OK 73102	OGRID:
	246289
	Action Number:
	369708
Action Type: [C-141] Remediation Closure Request C-141 (C-141-v-Closure)	

QUESTIONS

Prerequisites	
Incident ID (n#)	nAPP2420128041
Incident Name	NAPP2420128041 RDX FEDERAL 21 #022 @ 30-015-40561
Incident Type	Produced Water Release
Incident Status	Remediation Closure Report Received
Incident Well	[30-015-40561] RDX FEDERAL 21 #022

Location of Release Source	
Please answer all the questions in this group.	
Site Name	RDX FEDERAL 21 #022
Date Release Discovered	07/18/2024
Surface Owner	Federal

Incident Details	
Please answer all the questions in this group.	
Incident Type	Produced Water Release
Did this release result in a fire or is the result of a fire	No
Did this release result in any injuries	No
Has this release reached or does it have a reasonable probability of reaching a watercourse	No
Has this release endangered or does it have a reasonable probability of endangering public health	No
Has this release substantially damaged or will it substantially damage property or the environment	No
Is this release of a volume that is or may with reasonable probability be detrimental to fresh water	No

Nature and Volume of Release	
Material(s) released, please answer all that apply below. Any calculations or specific justifications for the volumes provided should be attached to the follow-up C-141 submission.	
Crude Oil Released (bbls) Details	Not answered.
Produced Water Released (bbls) Details	Cause: Overflow - Tank, Pit, Etc. Production Tank Produced Water Released: 50 BBL Recovered: 50 BBL Lost: 0 BBL.
Is the concentration of chloride in the produced water >10,000 mg/l	Yes
Condensate Released (bbls) Details	Not answered.
Natural Gas Vented (Mcf) Details	Not answered.
Natural Gas Flared (Mcf) Details	Not answered.
Other Released Details	Not answered.
Are there additional details for the questions above (i.e. any answer containing Other, Specify, Unknown, and/or Fire, or any negative lost amounts)	Not answered.

District I

1625 N. French Dr., Hobbs, NM 88240
Phone:(575) 393-6161 Fax:(575) 393-0720

District II

811 S. First St., Artesia, NM 88210
Phone:(575) 748-1283 Fax:(575) 748-9720

District III

1000 Rio Brazos Rd., Aztec, NM 87410
Phone:(505) 334-6178 Fax:(505) 334-6170

District IV

1220 S. St Francis Dr., Santa Fe, NM 87505
Phone:(505) 476-3470 Fax:(505) 476-3462

State of New Mexico
Energy, Minerals and Natural Resources
Oil Conservation Division
1220 S. St Francis Dr.
Santa Fe, NM 87505

QUESTIONS, Page 2

Action 369708

QUESTIONS (continued)

Operator: WPX Energy Permian, LLC Devon Energy - Regulatory Oklahoma City, OK 73102	OGRID:	246289
	Action Number:	369708
	Action Type:	[C-141] Remediation Closure Request C-141 (C-141-v-Closure)

QUESTIONS

Nature and Volume of Release (continued)	
Is this a gas only submission (i.e. only significant Mcf values reported)	No, according to supplied volumes this does not appear to be a "gas only" report.
Was this a major release as defined by Subsection A of 19.15.29.7 NMAC	Yes
Reasons why this would be considered a submission for a notification of a major release	From paragraph A. "Major release" determine using: (1) an unauthorized release of a volume, excluding gases, of 25 barrels or more.
With the implementation of the 19.15.27 NMAC (05/25/2021), venting and/or flaring of natural gas (i.e. gas only) are to be submitted on the C-129 form.	

Initial Response

The responsible party must undertake the following actions immediately unless they could create a safety hazard that would result in injury.

The source of the release has been stopped	True
The impacted area has been secured to protect human health and the environment	True
Released materials have been contained via the use of berms or dikes, absorbent pads, or other containment devices	True
All free liquids and recoverable materials have been removed and managed appropriately	True
If all the actions described above have not been undertaken, explain why	Not answered.

Per Paragraph (4) of Subsection B of 19.15.29.8 NMAC the responsible party may commence remediation immediately after discovery of a release. If remediation has begun, please prepare and attach a narrative of actions to date in the follow-up C-141 submission. If remedial efforts have been successfully completed or if the release occurred within a lined containment area (see Subparagraph (a) of Paragraph (5) of Subsection A of 19.15.29.11 NMAC), please prepare and attach all information needed for closure evaluation in the follow-up C-141 submission.

I hereby certify that the information given above is true and complete to the best of my knowledge and understand that pursuant to OCD rules and regulations all operators are required to report and/or file certain release notifications and perform corrective actions for releases which may endanger public health or the environment. The acceptance of a C-141 report by the OCD does not relieve the operator of liability should their operations have failed to adequately investigate and remediate contamination that pose a threat to groundwater, surface water, human health or the environment. In addition, OCD acceptance of a C-141 report does not relieve the operator of responsibility for compliance with any other federal, state, or local laws and/or regulations.

I hereby agree and sign off to the above statement	Name: James Raley Title: EHS Professional Email: jim.raley@dmv.com Date: 08/02/2024
--	--

District I

1625 N. French Dr., Hobbs, NM 88240
Phone:(575) 393-6161 Fax:(575) 393-0720

District II

811 S. First St., Artesia, NM 88210
Phone:(575) 748-1283 Fax:(575) 748-9720

District III

1000 Rio Brazos Rd., Aztec, NM 87410
Phone:(505) 334-6178 Fax:(505) 334-6170

District IV

1220 S. St Francis Dr., Santa Fe, NM 87505
Phone:(505) 476-3470 Fax:(505) 476-3462

State of New Mexico
Energy, Minerals and Natural Resources
Oil Conservation Division
1220 S. St Francis Dr.
Santa Fe, NM 87505

QUESTIONS, Page 3

Action 369708

QUESTIONS (continued)

Operator: WPX Energy Permian, LLC Devon Energy - Regulatory Oklahoma City, OK 73102	OGRID:
	246289
	Action Number:
	369708
Action Type:	
[C-141] Remediation Closure Request C-141 (C-141-v-Closure)	

QUESTIONS**Site Characterization**

Please answer all the questions in this group (only required when seeking remediation plan approval and beyond). This information must be provided to the appropriate district office no later than 90 days after the release discovery date.

What is the shallowest depth to groundwater beneath the area affected by the release in feet below ground surface (ft bgs)	Between 100 and 500 (ft.)
What method was used to determine the depth to ground water	U.S. Geological Survey
Did this release impact groundwater or surface water	No
What is the minimum distance, between the closest lateral extents of the release and the following surface areas:	
A continuously flowing watercourse or any other significant watercourse	Between 500 and 1000 (ft.)
Any lakebed, sinkhole, or playa lake (measured from the ordinary high-water mark)	Between 500 and 1000 (ft.)
An occupied permanent residence, school, hospital, institution, or church	Greater than 5 (mi.)
A spring or a private domestic fresh water well used by less than five households for domestic or stock watering purposes	Greater than 5 (mi.)
Any other fresh water well or spring	Greater than 5 (mi.)
Incorporated municipal boundaries or a defined municipal fresh water well field	Greater than 5 (mi.)
A wetland	Greater than 5 (mi.)
A subsurface mine	Greater than 5 (mi.)
An (non-karst) unstable area	Greater than 5 (mi.)
Categorize the risk of this well / site being in a karst geology	Medium
A 100-year floodplain	Between 500 and 1000 (ft.)
Did the release impact areas not on an exploration, development, production, or storage site	No

Remediation Plan

Please answer all the questions that apply or are indicated. This information must be provided to the appropriate district office no later than 90 days after the release discovery date.

Requesting a remediation plan approval with this submission	Yes
Attach a comprehensive report demonstrating the lateral and vertical extents of soil contamination associated with the release have been determined, pursuant to 19.15.29.11 NMAC and 19.15.29.13 NMAC.	
Have the lateral and vertical extents of contamination been fully delineated	Yes
Was this release entirely contained within a lined containment area	Yes
Per Subsection B of 19.15.29.11 NMAC unless the site characterization report includes completed efforts at remediation, the report must include a proposed remediation plan in accordance with 19.15.29.12 NMAC, which includes the anticipated timelines for beginning and completing the remediation.	
On what estimated date will the remediation commence	07/26/2024
On what date will (or did) the final sampling or liner inspection occur	07/26/2024
On what date will (or was) the remediation complete(d)	07/26/2024
What is the estimated surface area (in square feet) that will be remediated	4700
What is the estimated volume (in cubic yards) that will be remediated	0
These estimated dates and measurements are recognized to be the best guess or calculation at the time of submission and may (be) change(d) over time as more remediation efforts are completed.	
The OCD recognizes that proposed remediation measures may have to be minimally adjusted in accordance with the physical realities encountered during remediation. If the responsible party has any need to significantly deviate from the remediation plan proposed, then it should consult with the division to determine if another remediation plan submission is required.	

District I

1625 N. French Dr., Hobbs, NM 88240
Phone:(575) 393-6161 Fax:(575) 393-0720

District II

811 S. First St., Artesia, NM 88210
Phone:(575) 748-1283 Fax:(575) 748-9720

District III

1000 Rio Brazos Rd., Aztec, NM 87410
Phone:(505) 334-6178 Fax:(505) 334-6170

District IV

1220 S. St Francis Dr., Santa Fe, NM 87505
Phone:(505) 476-3470 Fax:(505) 476-3462

State of New Mexico
Energy, Minerals and Natural Resources
Oil Conservation Division
1220 S. St Francis Dr.
Santa Fe, NM 87505

QUESTIONS, Page 4

Action 369708

QUESTIONS (continued)

Operator: WPX Energy Permian, LLC Devon Energy - Regulatory Oklahoma City, OK 73102	OGRID:	246289
	Action Number:	369708
	Action Type:	[C-141] Remediation Closure Request C-141 (C-141-v-Closure)

QUESTIONS**Remediation Plan (continued)**

Please answer all the questions that apply or are indicated. This information must be provided to the appropriate district office no later than 90 days after the release discovery date.

This remediation will (or is expected to) utilize the following processes to remediate / reduce contaminants:

(Select all answers below that apply.)

Is (or was) there affected material present needing to be removed	No
Is (or was) there a power wash of the lined containment area (to be) performed	Yes
OTHER (Non-listed remedial process)	Not answered.

Per Subsection B of 19.15.29.11 NMAC unless the site characterization report includes completed efforts at remediation, the report must include a proposed remediation plan in accordance with 19.15.29.12 NMAC, which includes the anticipated timelines for beginning and completing the remediation.

I hereby certify that the information given above is true and complete to the best of my knowledge and understand that pursuant to OCD rules and regulations all operators are required to report and/or file certain release notifications and perform corrective actions for releases which may endanger public health or the environment. The acceptance of a C-141 report by the OCD does not relieve the operator of liability should their operations have failed to adequately investigate and remediate contamination that pose a threat to groundwater, surface water, human health or the environment. In addition, OCD acceptance of a C-141 report does not relieve the operator of responsibility for compliance with any other federal, state, or local laws and/or regulations.

I hereby agree and sign off to the above statement	Name: James Raley Title: EHS Professional Email: jim.raley@dvni.com Date: 08/02/2024
--	---

The OCD recognizes that proposed remediation measures may have to be minimally adjusted in accordance with the physical realities encountered during remediation. If the responsible party has any need to significantly deviate from the remediation plan proposed, then it should consult with the division to determine if another remediation plan submission is required.

District I

1625 N. French Dr., Hobbs, NM 88240
Phone:(575) 393-6161 Fax:(575) 393-0720

District II

811 S. First St., Artesia, NM 88210
Phone:(575) 748-1283 Fax:(575) 748-9720

District III

1000 Rio Brazos Rd., Aztec, NM 87410
Phone:(505) 334-6178 Fax:(505) 334-6170

District IV

1220 S. St Francis Dr., Santa Fe, NM 87505
Phone:(505) 476-3470 Fax:(505) 476-3462

State of New Mexico
Energy, Minerals and Natural Resources
Oil Conservation Division
1220 S. St Francis Dr.
Santa Fe, NM 87505

QUESTIONS, Page 6

Action 369708

QUESTIONS (continued)

Operator: WPX Energy Permian, LLC Devon Energy - Regulatory Oklahoma City, OK 73102	OGRID:
	246289
	Action Number:
	369708
Action Type: [C-141] Remediation Closure Request C-141 (C-141-v-Closure)	

QUESTIONS

Liner Inspection Information	
Last liner inspection notification (C-141L) recorded	366328
Liner inspection date pursuant to Subparagraph (a) of Paragraph (5) of Subsection A of 19.15.29.11 NMAC	07/26/2024
Was all the impacted materials removed from the liner	Yes
What was the liner inspection surface area in square feet	4700

Remediation Closure Request

Only answer the questions in this group if seeking remediation closure for this release because all remediation steps have been completed.

Requesting a remediation closure approval with this submission	Yes
Have the lateral and vertical extents of contamination been fully delineated	Yes
Was this release entirely contained within a lined containment area	Yes
What was the total surface area (in square feet) remediated	4700
What was the total volume (cubic yards) remediated	0
Summarize any additional remediation activities not included by answers (above)	Liner inspected no holes found.

The responsible party must attach information demonstrating they have complied with all applicable closure requirements and any conditions or directives of the OCD. This demonstration should be in the form of a comprehensive report (in .pdf format) including a scaled site map, sampling diagrams, relevant field notes, photographs of any excavation prior to backfilling, laboratory data including chain of custody documents of final sampling, and a narrative of the remedial activities. Refer to 19.15.29.12 NMAC.

I hereby certify that the information given above is true and complete to the best of my knowledge and understand that pursuant to OCD rules and regulations all operators are required to report and/or file certain release notifications and perform corrective actions for releases which may endanger public health or the environment. The acceptance of a C-141 report by the OCD does not relieve the operator of liability should their operations have failed to adequately investigate and remediate contamination that pose a threat to groundwater, surface water, human health or the environment. In addition, OCD acceptance of a C-141 report does not relieve the operator of responsibility for compliance with any other federal, state, or local laws and/or regulations. The responsible party acknowledges they must substantially restore, reclaim, and re-vegetate the impacted surface area to the conditions that existed prior to the release or their final land use in accordance with 19.15.29.13 NMAC including notification to the OCD when reclamation and re-vegetation are complete.

I hereby agree and sign off to the above statement	Name: James Raley Title: EHS Professional Email: jim.raley@dvn.com Date: 08/02/2024
--	--

District I
1625 N. French Dr., Hobbs, NM 88240
Phone:(575) 393-6161 Fax:(575) 393-0720
District II
811 S. First St., Artesia, NM 88210
Phone:(575) 748-1283 Fax:(575) 748-9720
District III
1000 Rio Brazos Rd., Aztec, NM 87410
Phone:(505) 334-6178 Fax:(505) 334-6170
District IV
1220 S. St Francis Dr., Santa Fe, NM 87505
Phone:(505) 476-3470 Fax:(505) 476-3462

State of New Mexico
Energy, Minerals and Natural Resources
Oil Conservation Division
1220 S. St Francis Dr.
Santa Fe, NM 87505

CONDITIONS

Action 369708

CONDITIONS

Operator: WPX Energy Permian, LLC Devon Energy - Regulatory Oklahoma City, OK 73102	OGRID: 246289
	Action Number: 369708
	Action Type: [C-141] Remediation Closure Request C-141 (C-141-v-Closure)

CONDITIONS

Created By	Condition	Condition Date
scott.rodgers	App ID 369708 Liner Inspection approved	8/12/2024