



August 5, 2024

New Mexico Oil Conservation Division
1220 South St. Francis Drive
Santa Fe, New Mexico 87505

**Re: Closure Request
Raider CS
Incident Number nAPP2415554067
Eddy County, New Mexico**

To Whom it May Concern:

Ensolum, LLC (Ensolum) on behalf of XTO Energy, Inc. (XTO), has prepared this Closure Request to document site assessment and soil sampling activities performed at the Raider CS (Site). The purpose of the site assessment and soil sampling activities was to assess for the presence or absence of impacts to soil resulting from a equipment fire at the Site. Based on the field observations, field screening activities, and soil sample laboratory analytical results, XTO is submitting this *Closure Request* describing site assessment and composite soil sampling activities that have occurred and requesting no further action for Incident Number nAPP2415554067.

SITE DESCRIPTION AND RELEASE SUMMARY

The Site is located in in Unit G, Section 36, Township 23 South, Range 29 East, in Eddy County, New Mexico (32.264543°, -103.934814°) and is associated with oil and gas exploration and production operations on state land managed by the New Mexico State Land Office (NMSLO).

On May 27, 2024, an antifreeze/coolant line disconnected from the compressor causing a small fire from the exhaust. There was no fluids or fire believed to reach the ground surface. There were no fluids to recover. XTO reported the release via email to the New Mexico Oil Conservation Division (NMOCD) on June 3, 2024, and submitted an Initial C-141 Application (C-141) the same day. The release was assigned Incident Number nAPP2415554067.

SITE CHARACTERIZATION AND CLOSURE CRITERIA

The Site was characterized to determine the applicability of Table 1, Closure Criteria for Soils Impacted by a Release, of Title 19, Chapter 15, Part 29 (19.15.29) of the New Mexico Administrative Code (NMAC). Results from the characterization desktop review are presented below. Potential site receptors are identified on Figure 1.

Depth to groundwater at the Site is greater than 100 feet below ground surface (bgs) based on a recent soil boring drilled for determination of regional groundwater depth. Between November 2020 and January 2021, a soil boring (C-04494) was drilled 0.73 miles northwest of the Site utilizing a track-mounted hollow-stem auger rig and a sonic drilling rig. Soil boring C-04494 was drilled to a depth of 105 feet bgs. A field geologist logged and described soils continuously. No moisture or groundwater was encountered during drilling activities. The borehole was left open for over 72 hours to allow for potential

slow infill of groundwater. After the 72-hour waiting period without observing groundwater, it was confirmed that groundwater beneath the Site is greater than 105 feet bgs. The borehole was properly abandoned with drill cuttings and hydrated bentonite chips. The Well Log is included in Appendix B.

The closest continuously flowing or significant watercourse to the Site is a seasonal dry wash, located approximately 340 feet south of the Site. The Site is greater than 200 feet from a lakebed, sinkhole, or playa lake and greater than 300 feet from an occupied residence, school, hospital, institution, church, or wetland. The Site is greater than 1,000 feet to a freshwater well or spring and is not within a 100-year floodplain or overlying a subsurface mine. The Site is not underlain by unstable geology (medium potential karst designation area). Site receptors are identified on Figure 1.

Because the nearest depth to groundwater data is not within the NMOCD's preferred radius of ½ mile, XTO applied the following NMOCD Table 1 Closure Criteria (Closure Criteria):

- Benzene: 10 milligrams per kilogram (mg/kg)
- Benzene, toluene, ethylbenzene, and total xylenes (BTEX): 50 mg/kg
- Total petroleum hydrocarbons (TPH): 100 mg/kg
- Chloride: 600 mg/kg

SITE ASSESSMENT ACTIVITIES

On June 17, 2024, Ensolum personnel visited the Site to evaluate the release extent based on information provided on the C-141 and visual observations. XTO personnel assisted in locating the source of the fire and provided a Safety Data Sheet (SDS), which is provided in Appendix A, for the antifreeze/coolant (CoastalGuardEG35) that was released. The release source was mapped utilizing a handheld Global Positioning System (GPS) unit and is depicted on Figure 2. Photographic documentation was completed during the Site visit and a photographic log is included in Appendix C.

The CoastalGuardEG35 ingredients were compared to the contaminants listed by the Environmental Protection Agency (EPA) in Table 1 of 40 C.F.R. 261.24(b), which characterizes hazardous waste by toxicity. Ensolum additionally referenced the New Mexico Environment Department's (NMED) Soil Screening Levels in their *Risk Assessment Guidance for Site Investigations and Remediation Volumes I and II*. No ingredients of CoastalGuardEG35 are included on either list. No additional contaminants of concern (COCs) were identified .

On June 21, 2024, Ensolum personnel returned to the Site to complete composite sampling of the ground surface nearest the source of the fire. One composite confirmation soil sample (CS01) was collected from the ground surface to assess for the presence or absence of impacted soil. The preliminary soil sample was field screened for volatile organic compounds (VOCs) utilizing a calibrated photoionization detector (PID) and chloride utilizing Hach® chloride QuanTab® test strips. The composite soil sample location is depicted on Figure 2.

The composite confirmation soil sample (CS01) was placed directly into a pre-cleaned glass jar, labeled with the location, date, time, sampler name, method of analysis, and immediately placed on ice. The soil sample was transported under strict chain-of-custody procedures to Cardinal Laboratories (Cardinal) in Hobbs, New Mexico, for analysis of BTEX following United States Environmental Protection Agency (EPA) Method 8021B; TPH-gasoline range organics (GRO), TPH-diesel range organics (DRO), and TPH-oil range organics (ORO) following EPA Method 8015M/D; and chloride following EPA Method SM4500.

XTO Energy, Inc
Raider CS
Closure Request



LABORATORY ANALYTICAL RESULTS

Laboratory analytical results for confirmation soil sample CS01 indicated that benzene, BTEX, TPH, and chloride concentrations were compliant with the Site Closure Criteria. Laboratory analytical results are summarized in Table 1 and the complete laboratory analytical reports are included as Appendix D.

CLOSURE REQUEST

Site assessment activities were conducted to assess for the presence or absence of impacted soil resulting from the May 27, 2024, antifreeze/coolant related fire. Laboratory analytical results for the soil sample collected around the compressor indicated that all COC concentrations were compliant with the Site Closure Criteria and no ground surface staining from the fire was visible. Based on the soil sample analytical results, no further remediation was required. XTO respectfully requests closure and no further action for Incident Number nAPP2415554067.

If you have any questions or comments, please contact Ms. Tacoma Morrissey at (337) 257-8307 or tmorrissey@ensolum.com.

Sincerely,
Ensolum, LLC

A handwritten signature in black ink, appearing to read "Tracy Hillard".

Tracy Hillard
Staff Engineer

A handwritten signature in black ink, appearing to read "Ashley L. Ager".

Ashley L. Ager, M.S., P.G
Principal

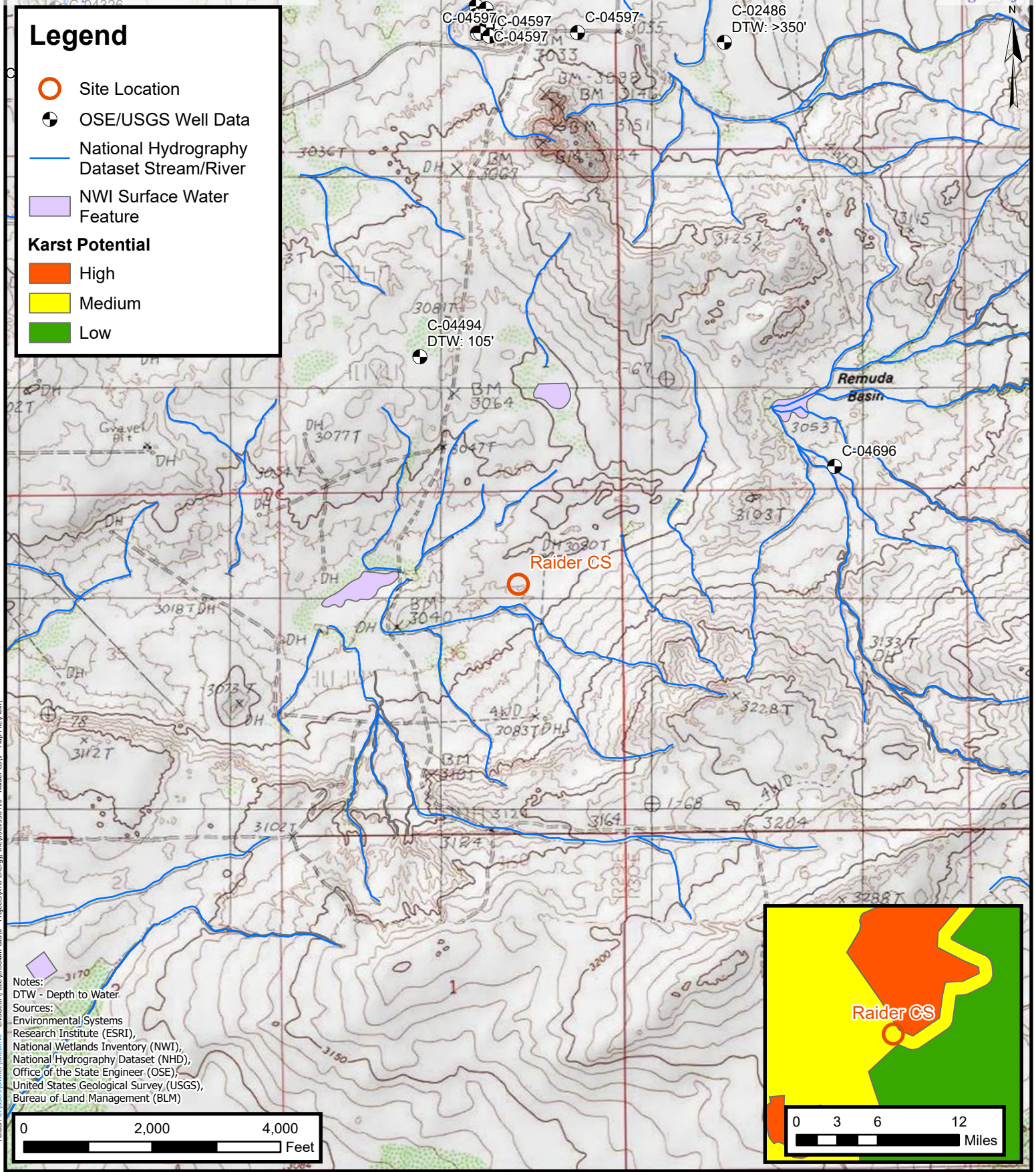
cc: Amanda Garcia, XTO
Amy Ruth, XTO
NMSLO

Appendices:

Figure 1	Site Receptor Map
Figure 2	Confirmation Soil Sample Location
Table 1	Soil Sample Analytical Results
Appendix A	Safety Data Sheet – CoastalGuardEG35
Appendix B	Referenced Well Records
Appendix C	Photographic Log
Appendix D	Laboratory Analytical Reports & Chain-of-Custody Documentation



FIGURES



Site Receptor Map

XTO Energy, Inc
Raider CS

Incident Number: nAPP2415554067
Unit G, Sec 36, T23S, R29E
Eddy County, NM

FIGURE

1

Legend

- Confirmation Soil Sample in Compliance with Closure Criteria
- ▲ Point of Release (POR)

**Confirmation Soil Sample Locations**

XTO Energy, Inc
Raider CS
Incident Number: nAPP2415554067
Unit G, Sec 36, T23S, R29E
Eddy County, NM

FIGURE**2**



TABLES



TABLE 1 SOIL SAMPLE ANALYTICAL RESULTS Raider CS XTO Energy, Inc Eddy County, New Mexico										
Sample I.D.	Sample Date	Sample Depth (feet bgs)	Benzene (mg/kg)	Total BTEX (mg/kg)	TPH GRO (mg/kg)	TPH DRO (mg/kg)	TPH ORO (mg/kg)	GRO+DRO (mg/kg)	Total TPH (mg/kg)	Chloride (mg/kg)
NMOCD Table I Closure Criteria (NMAC 19.15.29)			10	50	NE	NE	NE	NE	100	600
Confirmation Soil Sample										
CS01	06/21/2024	0.5	<0.050	<0.300	<10.0	<10.0	<10.0	<10.0	<10.0	32.0

Notes:

bgs: below ground surface
mg/kg: milligrams per kilogram
NMOCD: New Mexico Oil Conservation Division
BTEX: Benzene, Toluene, Ethylbenzene, and Xylenes
Concentrations in **bold** exceed the NMOCD Table I Closure Criteria or reclamation requirement where applicable.

GRO: Gasoline Range Organics
DRO: Diesel Range Organics
ORO: Oil Range Organics
TPH: Total Petroleum Hydrocarbon
NMAC: New Mexico Administrative Code



APPENDIX A

Safety Data Sheet - CoastalGuardEG35



SAFETY DATA SHEET

1. Identification

Product identifier COASTALGUARD® EG 35
Other means of identification None.
Recommended use ALL PROPER AND LEGAL PURPOSES
Recommended restrictions None known.
Manufacturer/Importer/Supplier/Distributor information
Manufacturer
Company name Brenntag / Coastal Chemical Co., LLC
Address 3520 Veterans Memorial Drive
Abbeville, LA 70510
Telephone 337-893-3862
E-mail Not available.
Emergency phone number 800-424-9300 CHEMTREC

2. Hazard(s) identification

Physical hazards Not classified.
Health hazards Acute toxicity, oral Category 4
Environmental hazards Not classified.
OSHA defined hazards Not classified.

Label elements



Signal word Warning
Hazard statement Harmful if swallowed.
Precautionary statement
Prevention Wash thoroughly after handling. Do not eat, drink or smoke when using this product.
Response If swallowed: Call a poison center/doctor if you feel unwell. If exposed or concerned: Get medical advice/attention. Rinse mouth.
Storage Store away from incompatible materials.
Disposal Dispose of contents/container in accordance with local/regional/national/international regulations.
Hazard(s) not otherwise classified (HNOC) None known.
Supplemental information 99.29% of the mixture consists of component(s) of unknown acute dermal toxicity. 99.29% of the mixture consists of component(s) of unknown acute inhalation toxicity.

3. Composition/information on ingredients

Mixtures

Chemical name	Common name and synonyms	CAS number	%
1,2-ETHANEDIOL		107-21-1	33.1958
ETHANOL, 2,2'-OXYBIS-		111-46-6	0.1737
POTASSIUM HYDROXIDE (K(OH))		1310-58-3	0.0622
PHOSPHORIC ACID		7664-38-2	0.0359
BORAX (B4NA2O7.10H2O)		1303-96-4	0.0318
SODIUM HYDROXIDE (NA(OH))		1310-73-2	0.0001
Other components below reportable levels			66.5005

*Designates that a specific chemical identity and/or percentage of composition has been withheld as a trade secret.

4. First-aid measures

Inhalation	Move to fresh air. Call a physician if symptoms develop or persist.
Skin contact	Wash off with soap and water. Get medical attention if irritation develops and persists.
Eye contact	Rinse with water. Get medical attention if irritation develops and persists.
Ingestion	Rinse mouth. If vomiting occurs, keep head low so that stomach content doesn't get into the lungs. Get medical advice/attention if you feel unwell.
Most important symptoms/effects, acute and delayed	Convulsions. Dizziness. Nausea, vomiting. Abdominal pain.
Indication of immediate medical attention and special treatment needed	Provide general supportive measures and treat symptomatically. Keep victim warm. Keep victim under observation. Symptoms may be delayed.
General information	Ensure that medical personnel are aware of the material(s) involved, and take precautions to protect themselves. Show this safety data sheet to the doctor in attendance.

5. Fire-fighting measures

Suitable extinguishing media	Alcohol resistant foam. Powder. Carbon dioxide (CO2).
Unsuitable extinguishing media	Do not use water jet as an extinguisher, as this will spread the fire.
Specific hazards arising from the chemical	During fire, gases hazardous to health may be formed.
Special protective equipment and precautions for firefighters	Self-contained breathing apparatus and full protective clothing must be worn in case of fire.
Fire fighting equipment/instructions	Move containers from fire area if you can do so without risk.
Specific methods	Use standard firefighting procedures and consider the hazards of other involved materials.
General fire hazards	No unusual fire or explosion hazards noted.

6. Accidental release measures

Personal precautions, protective equipment and emergency procedures	Keep unnecessary personnel away. Keep people away from and upwind of spill/leak. Wear appropriate protective equipment and clothing during clean-up. Ensure adequate ventilation. Local authorities should be advised if significant spillages cannot be contained. For personal protection, see section 8 of the SDS.
Methods and materials for containment and cleaning up	Use water spray to reduce vapors or divert vapor cloud drift. Large Spills: Stop the flow of material, if this is without risk. Dike the spilled material, where this is possible. Absorb in vermiculite, dry sand or earth and place into containers. Following product recovery, flush area with water. Small Spills: Wipe up with absorbent material (e.g. cloth, fleece). Clean surface thoroughly to remove residual contamination. Never return spills to original containers for re-use. For waste disposal, see section 13 of the SDS. For waste disposal, see section 13 of the SDS.
Environmental precautions	Avoid discharge into drains, water courses or onto the ground.

7. Handling and storage

Precautions for safe handling	Do not taste or swallow. When using, do not eat, drink or smoke. Avoid prolonged exposure. Provide adequate ventilation. Wear appropriate personal protective equipment. Wash hands thoroughly after handling. Observe good industrial hygiene practices.
Conditions for safe storage, including any incompatibilities	Store in original tightly closed container. Store away from incompatible materials (see Section 10 of the SDS). Store away from incompatible materials (see Section 10 of the SDS).

8. Exposure controls/personal protection

Occupational exposure limits

US. OSHA Table Z-1 Limits for Air Contaminants (29 CFR 1910.1000)

Components	Type	Value
PHOSPHORIC ACID (CAS 7664-38-2)	PEL	1 mg/m3

US. OSHA Table Z-1 Limits for Air Contaminants (29 CFR 1910.1000)

Components	Type	Value
SODIUM HYDROXIDE (NA(OH)) (CAS 1310-73-2)	PEL	2 mg/m3

US. ACGIH Threshold Limit Values

Components	Type	Value	Form
1,2-ETHANEDIOL (CAS 107-21-1)	Ceiling	100 mg/m3	Aerosol.
BORAX (B4NA2O7.10H2O) (CAS 1303-96-4)	STEL	6 mg/m3	Inhalable fraction.
PHOSPHORIC ACID (CAS 7664-38-2)	TWA	2 mg/m3	Inhalable fraction.
	STEL	3 mg/m3	
POTASSIUM HYDROXIDE (K(OH)) (CAS 1310-58-3)	TWA	1 mg/m3	Inhalable fraction.
	Ceiling	2 mg/m3	
SODIUM HYDROXIDE (NA(OH)) (CAS 1310-73-2)	Ceiling	2 mg/m3	

US. NIOSH: Pocket Guide to Chemical Hazards

Components	Type	Value
BORAX (B4NA2O7.10H2O) (CAS 1303-96-4)	TWA	5 mg/m3
PHOSPHORIC ACID (CAS 7664-38-2)	STEL	3 mg/m3
	TWA	1 mg/m3
POTASSIUM HYDROXIDE (K(OH)) (CAS 1310-58-3)	TWA	2 mg/m3
SODIUM HYDROXIDE (NA(OH)) (CAS 1310-73-2)	Ceiling	2 mg/m3

US. Workplace Environmental Exposure Level (WEEL) Guides

Components	Type	Value
ETHANOL, 2,2'-OXYBIS- (CAS 111-46-6)	TWA	10 mg/m3

Biological limit values	No biological exposure limits noted for the ingredient(s).
Appropriate engineering controls	Good general ventilation (typically 10 air changes per hour) should be used. Ventilation rates should be matched to conditions. If applicable, use process enclosures, local exhaust ventilation, or other engineering controls to maintain airborne levels below recommended exposure limits. If exposure limits have not been established, maintain airborne levels to an acceptable level.

Individual protection measures, such as personal protective equipment

The following are recommendations for Personnel Protective Equipment (PPE). The employer/user of this product must perform a Hazard Assessment of the workplace according to OSHA regulations 29 CFR 1910.132 to determine the appropriate PPE for use while performing any task involving potential exposure to this product.

Eye/face protection	Face shield is recommended. Wear safety glasses with side shields (or goggles).
Skin protection	
Hand protection	Wear appropriate chemical resistant gloves. Suitable gloves can be recommended by the glove supplier.
Other	Wear suitable protective clothing.
Respiratory protection	In case of insufficient ventilation, wear suitable respiratory equipment.
Thermal hazards	Wear appropriate thermal protective clothing, when necessary.

General hygiene considerations	Keep away from food and drink. Always observe good personal hygiene measures, such as washing after handling the material and before eating, drinking, and/or smoking. Routinely wash work clothing and protective equipment to remove contaminants.
--------------------------------	--

9. Physical and chemical properties

Appearance

Physical state	Liquid.
----------------	---------

Form	Liquid.
Color	Light green
Odor	NOT LISTED
Odor threshold	Not available.
pH	8 - 10
Melting point/freezing point	8.6 °F (-13 °C) estimated
Initial boiling point and boiling range	272.54 °F (133.63 °C) estimated
Flash point	200.0 °F (93.3 °C)
Evaporation rate	Not available.
Flammability (solid, gas)	Not applicable.
Upper/lower flammability or explosive limits	
Flammability limit - lower (%)	Not available.
Flammability limit - upper (%)	Not available.
Explosive limit - lower (%)	Not available.
Explosive limit - upper (%)	Not available.
Vapor pressure	Not available.
Vapor density	Not available.
Relative density	Not available.
Solubility(ies)	
Solubility (water)	Not available.
Partition coefficient (n-octanol/water)	Not available.
Auto-ignition temperature	748 °F (397.78 °C) estimated
Decomposition temperature	Not available.
Viscosity	Not available.
Other information	
Density	8.63 lbs/gal
Explosive properties	Not explosive.
Flammability class	Combustible IIIB estimated
Oxidizing properties	Not oxidizing.
Percent volatile	99.46 % estimated
Specific gravity	1.03
VOC	33.37 % estimated

10. Stability and reactivity

Reactivity	The product is stable and non-reactive under normal conditions of use, storage and transport.
Chemical stability	Material is stable under normal conditions.
Possibility of hazardous reactions	Hazardous polymerization does not occur.
Conditions to avoid	Avoid temperatures exceeding the flash point. Contact with incompatible materials.
Incompatible materials	Strong oxidizing agents.
Hazardous decomposition products	No hazardous decomposition products are known.

11. Toxicological information

Information on likely routes of exposure

Inhalation	Prolonged inhalation may be harmful.
Skin contact	No adverse effects due to skin contact are expected.
Eye contact	Direct contact with eyes may cause temporary irritation.

Ingestion	Harmful if swallowed.
Symptoms related to the physical, chemical and toxicological characteristics	Convulsions. Dizziness. Nausea, vomiting. Abdominal pain.
Information on toxicological effects	
Acute toxicity	Harmful if swallowed.
Skin corrosion/irritation	Prolonged skin contact may cause temporary irritation.
Serious eye damage/eye irritation	Direct contact with eyes may cause temporary irritation.
Respiratory or skin sensitization	
Respiratory sensitization	Not a respiratory sensitizer.
Skin sensitization	This product is not expected to cause skin sensitization.
Germ cell mutagenicity	No data available to indicate product or any components present at greater than 0.1% are mutagenic or genotoxic.
Carcinogenicity	Not classifiable as to carcinogenicity to humans.
IARC Monographs. Overall Evaluation of Carcinogenicity	
Not listed.	
OSHA Specifically Regulated Substances (29 CFR 1910.1001-1050)	
Not regulated.	
US. National Toxicology Program (NTP) Report on Carcinogens	
Not listed.	
Reproductive toxicity	This product is not expected to cause reproductive or developmental effects.
Specific target organ toxicity - single exposure	Not classified.
Specific target organ toxicity - repeated exposure	Not classified.
Aspiration hazard	Not an aspiration hazard.
Chronic effects	Prolonged inhalation may be harmful.

12. Ecological information

Ecotoxicity The product is not classified as environmentally hazardous. However, this does not exclude the possibility that large or frequent spills can have a harmful or damaging effect on the environment.

Components	Species		Test Results
1,2-ETHANEDIOL (CAS 107-21-1)			
Aquatic			
Fish	LC50	Fathead minnow (Pimephales promelas)	8050 mg/l, 96 hours
ETHANOL, 2,2'-OXYBIS- (CAS 111-46-6)			
Aquatic			
Fish	LC50	Western mosquitofish (Gambusia affinis)	> 32000 mg/l, 96 hours
POTASSIUM HYDROXIDE (K(OH)) (CAS 1310-58-3)			
Aquatic			
Fish	LC50	Western mosquitofish (Gambusia affinis)	80 mg/l, 96 hours
SODIUM HYDROXIDE (NA(OH)) (CAS 1310-73-2)			
Aquatic			
Crustacea	EC50	Water flea (Ceriodaphnia dubia)	34.59 - 47.13 mg/l, 48 hours
Fish	LC50	Western mosquitofish (Gambusia affinis)	125 mg/l, 96 hours

* Estimates for product may be based on additional component data not shown.

Persistence and degradability No data is available on the degradability of this product.

Bioaccumulative potential

Partition coefficient n-octanol / water (log Kow)

1,2-ETHANEDIOL -1.36

Mobility in soil No data available.

Other adverse effects The product contains volatile organic compounds which have a photochemical ozone creation potential.

13. Disposal considerations

Disposal instructions Collect and reclaim or dispose in sealed containers at licensed waste disposal site. Dispose of contents/container in accordance with local/regional/national/international regulations.

Local disposal regulations Dispose in accordance with all applicable regulations.

Hazardous waste code The waste code should be assigned in discussion between the user, the producer and the waste disposal company.

Waste from residues / unused products Dispose of in accordance with local regulations. Empty containers or liners may retain some product residues. This material and its container must be disposed of in a safe manner (see: Disposal instructions).

Contaminated packaging Since emptied containers may retain product residue, follow label warnings even after container is emptied. Empty containers should be taken to an approved waste handling site for recycling or disposal.

14. Transport information

DOT

UN number UN3082

UN proper shipping name ENVIRONMENTALLY HAZARDOUS SUBSTANCES, LIQUID, N.O.S. (ETHYLENE GLYCOL)

Transport hazard class(es)

Class 9

Subsidiary risk -

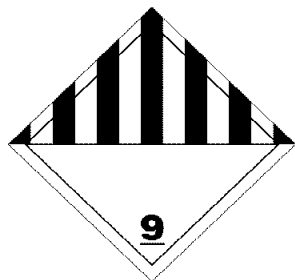
Packing group III

Special precautions for user Read safety instructions, SDS and emergency procedures before handling.

ERG number 171

DOT information on packaging may be different from that listed.

DOT



15. Regulatory information

US federal regulations This product is a "Hazardous Chemical" as defined by the OSHA Hazard Communication Standard, 29 CFR 1910.1200.

TSCA Section 12(b) Export Notification (40 CFR 707, Subpt. D)

Not regulated.

CERCLA Hazardous Substance List (40 CFR 302.4)

1,2-ETHANEDIOL (CAS 107-21-1)	Listed.
PHOSPHORIC ACID (CAS 7664-38-2)	Listed.
POTASSIUM HYDROXIDE (K(OH)) (CAS 1310-58-3)	Listed.
SODIUM HYDROXIDE (NA(OH)) (CAS 1310-73-2)	Listed.

SARA 304 Emergency release notification

Not regulated.

OSHA Specifically Regulated Substances (29 CFR 1910.1001-1050)

Not regulated.

Superfund Amendments and Reauthorization Act of 1986 (SARA)

Hazard categories

Immediate Hazard - Yes
Delayed Hazard - No
Fire Hazard - No
Pressure Hazard - No
Reactivity Hazard - No

SARA 302 Extremely hazardous substance

Not listed.

SARA 311/312 Hazardous chemical Yes

SARA 313 (TRI reporting)

Chemical name	CAS number	% by wt.
1,2-ETHANEDIOL	107-21-1	33.1958

Other federal regulations

Clean Air Act (CAA) Section 112 Hazardous Air Pollutants (HAPs) List

1,2-ETHANEDIOL (CAS 107-21-1)

Clean Air Act (CAA) Section 112(r) Accidental Release Prevention (40 CFR 68.130)

Not regulated.

Safe Drinking Water Act (SDWA) Not regulated.

FEMA Priority Substances Respiratory Health and Safety in the Flavor Manufacturing Workplace

PHOSPHORIC ACID (CAS 7664-38-2) High priority

US state regulations WARNING: This product contains a chemical known to the State of California to cause birth defects or other reproductive harm.

US - California Proposition 65 - CRT: Listed date/Developmental toxin

1,2-ETHANEDIOL (CAS 107-21-1) Listed: June 19, 2015

US. California. Candidate Chemicals List. Safer Consumer Products Regulations (Cal. Code Regs, tit. 22, 69502.3, subd. (a))

1,2-ETHANEDIOL (CAS 107-21-1)
BORAX (B4NA2O7.10H2O) (CAS 1303-96-4)
PHOSPHORIC ACID (CAS 7664-38-2)
SODIUM HYDROXIDE (NA(OH)) (CAS 1310-73-2)

International Inventories

Country(s) or region	Inventory name	On inventory (yes/no)*
Australia	Australian Inventory of Chemical Substances (AICS)	No
Canada	Domestic Substances List (DSL)	No
Canada	Non-Domestic Substances List (NDSL)	Yes
China	Inventory of Existing Chemical Substances in China (IECSC)	Yes
Europe	European Inventory of Existing Commercial Chemical Substances (EINECS)	No
Europe	European List of Notified Chemical Substances (ELINCS)	No
Japan	Inventory of Existing and New Chemical Substances (ENCS)	No
Korea	Existing Chemicals List (ECL)	No
New Zealand	New Zealand Inventory	Yes
Philippines	Philippine Inventory of Chemicals and Chemical Substances (PICCS)	Yes
Taiwan	Taiwan Toxic Chemical Substances (TCS)	Yes
United States & Puerto Rico	Toxic Substances Control Act (TSCA) Inventory	Yes

*A "Yes" indicates that all components of this product comply with the inventory requirements administered by the governing country(s)
A "No" indicates that one or more components of the product are not listed or exempt from listing on the inventory administered by the governing country(s).

16. Other information, including date of preparation or last revision

Issue date	10-06-2017
Version #	01
HMIS® ratings	Health: 2 Flammability: 0 Physical hazard: 0
NFPA ratings	Health: 2 Flammability: 1 Instability: 0

Disclaimer

While Brenntag believes the information contained herein to be accurate, Brenntag makes no representation or warranty, express or implied, regarding, and assumes no liability for, the accuracy or completeness of the information. The Buyer assumes all responsibility for handling, using and/or reselling the Product in accordance with applicable federal, state, and local law. This SDS shall not in any way limit or preclude the operation and effect of any of the provisions of Brenntag's terms and conditions of sale.


Revision information


This document has undergone significant changes and should be reviewed in its entirety.





APPENDIX B


Referenced Well Records

<div><div><div><div>WSP USA</div><div>508 West Stevens Street Carlsbad, New Mexico 88220</div></div></div><div><div>BH or PH Name: BH01 (C-04494)</div><div>Date: 11/18/2020, 12/02/20, 01/05/2021</div></div><div><div>Site Name: Remuda North 25 Observation Well</div><div>RP or Incident Numbe</div></div><div><div>LTE Job Number: TE012919039</div></div></div>								
<div>LITHOLOGIC / SOIL SAMPLING LOG</div> <div><div>Lat/Long:</div><div>Field Screening:</div><div>Hole Diameter: 6.25", 4.25"</div><div>Total Depth: 105'</div></div>								
<div>Comments: Lithology remarks only. No field screenings: Dry hole</div>								
Moisture Content	Chloride (ppm)	Vapor (ppm)	Staining	Sample #	Sample Depth (ft bgs)	Depth (ft bgs)	USCS/Rock Symbol	Lithology/Remarks
D			N			1	SP-SC	
						2		0-1' : SAND, dry, brown, poorly graded, fine grain, Clay (10% clay), some roots, no stain, no odor
						3		
D			N			4	CCHE	1-4' : SAND, dry, reddish-light brown, poorly graded, very fine - fine grain, some rounded caliche pebbles, no stain, no odor
						5		
						6		4-9' : CALICHE, dry, light brown-tan, poorly consolidated, sub-rounded caliche pebbles and gravel, very silty, gradational
						7		
						8		9-14' : Abundent sub-round caliche gravel
						9		14-19' : Some sub-angular caliche gravel and pebbles
						10		19-24' : Abundant sub-angular caliche gravel and pebbles, moderately consolidated
						11		
						12		
						13		
						14		
						15		
						16		
						17		
						18		
						19		
						20		
						21		
						22		
						23		
D			N			24	CL	
						25		

 WSP USA 508 West Stevens Street Carlsbad, New Mexico 88220								BH or PH Name:		Date:	
								BH01 (C-04494)		11/18/2020, 12/02/20, 01/05/2021	
								Site Name:		Remuda North 25 Observation Well	
								RP or Incident Number:			
LITHOLOGIC / SOIL SAMPLING LOG								Logged By BB, LAD, FS		Method: Hollow Stem Auger, sonic	
Lat/Long:				Field Screening:				Hole Diameter:		Total Depth:	
								6.25", 4.25"		105'	
Comments: Lithology remarks only. No field screenings: Dry hole											
Moisture Content	Chloride (ppm)	Vapor (ppm)	Staining	Sample #	Sample Depth (ft bgs)	Depth (ft bgs)	USCS/Rock Symbol	Lithology/Remarks			
D			N			26	CL	24-39' : MUDSTONE, dry, reddish-brown, low plasticity, well consolidated, cohesive, trace caliche sub-angular pebbles, no tain, no odor, sharp transition 34-39' : Sub-angular calcium carbonate gravel with dissolution features (1-3mm), tan-light brown At 39' : Begin air rotary (4.25") 39-42' : DOLOMETIC LIMESTONE, tan-light brown, dry, well consolidated, with dissolution features (1-3mm), sharp, no stain, no odor, light to moderate reaction with HCl 42-45' : Some light gray dolomite with trace dissolution features (>1mm) At 48' : Stop due to air rotary refusal (11/18/20)			
						27					
28											
29											
30											
31											
32											
33											
34											
35											
36											
37											
D			N			38					
						39					
						40					
						41					
						42					
						43					
						44					
						45					
						46					
						47					
						48					
						49					
						50					

 WSP USA 508 West Stevens Street Carlsbad, New Mexico 88220		BH or PH Name:		Date:				
		BH01 (C-04494)		11/18/2020, 12/02/2020, 1/5/2021				
		Site Name:		Remuda North 25 Observation Well				
		RP or Incident Number:						
		LTE Job Number: TE012919039						
LITHOLOGIC / SOIL SAMPLING LOG								
Lat/Long:		Field Screening:		Hole Diameter:				
				6.25", 4.25"				
				Total Depth:				
				105'				
Comments: Lithologic log only, no field screenings								
Moisture Content	Chloride (ppm)	Vapor (ppm)	Staining	Sample #	Sample Depth (ft bgs)	Depth (ft bgs)	USCS/Rock Symbol	Lithology/Remarks
D			N			51	DOL	48-56' : Advanced borehole with new air rotary bit (12/02/20), DOLOMITE, white, well consolidated, dark gray- banding, no stain no odor
						52		
						53		
						54		
						55		
						56		
						57		
						58		
						59		
						60		
D			N			61	CH-S	At 56' : Restarted borehole on 1/5/2021 with sonic rig 56-65' : DOLOMITE, dry, light gray-gray, well consolidated, some calcium crystalline veins (<1mm), some dissolution features (2mm) with fine calcite crystalline, trace orange oxidation staining within dissolution features, no stain, no odor 62' : Brown-pale yellow coarse crystalline dolomitic limestone stringer (2cm) 63-65' : Abundant calcite crystalline veins (<1mm), pale green-gray, poorly consolidated 65-69' : MUDSTONE, moist, reddish brown, poorly consolidated, high plasticity, cohesive, abundant coarse crystalline gypsum, few pale green-gray mottling, no stain, no odor 69-81' : GYPSUM with Anhydrite, dry, greenish gray, some pale yellow, well consolidated, fine crystalline, 20% anhydrite, no stain, no odor
						62		
						63		
						64		
						65		
						66		
						67		
						68		
						69		
						70		
						71		
						72		
						73		
						74		
						75		
D			N			70	GYP	
						71		
						72		
						73		
						74		
						75		

 WSP USA 508 West Stevens Street Carlsbad, New Mexico 88220		BH or PH Name:		Date:										
		BH01 (C-04494)		11/18/2020, 12/02/2020, 1/5/2021										
		Site Name:		Remuda North 25 Observation Well										
		RP or Incident Number:												
		LTE Job Number: TE012919039												
LITHOLOGIC / SOIL SAMPLING LOG				Logged By BB, LAD, FS	Method: Hollow Stem Auger, sonic									
Lat/Long:		Field Screening:		Hole Diameter:	Total Depth:									
				6.25", 4.25"	105'									
Comments: Lithologic log only, no field screenings														
Moisture Content	Chloride (ppm)	Vapor (ppm)	Staining	Sample #	Sample Depth (ft bgs)	Depth (ft bgs)	USCS/Rock Symbol	Lithology/Remarks						
D			N			76	GYP	69-81' : GYPSUM with Anhydrite, dry, greenish gray, some pale yellow, well consolidated, fine crystalline, 20% anhydrite, no stain, no odor						
						77								
						78								
						79								
						80								
						D			N			81	CH-S	81-98' : MUDSTONE, moist, dark reddish brown, moderately consolidated, high plasticity, cohesive, trace coarse crystalline gypsum inclusions, no stain, no odor 85-86.5' : greenish-gray well consolidated coarse crystalline gypsum/anhydrite stringer 90-98' : Some fine grain brown sand At 97' : dark gray-gray gypsum stringer (4cm) 98-99.5' : GYPSUM, dark gray-gray, some brown, dry, well consolidated, fine-coarse crystalline, no stain, no odor 99.5-105' : Sandy SILTSTONE, moist, brown, some gray-dark gray, poorly consolidated, 20% very fine grain sand, no stain, no odor
												82		
												83		
												84		
												85		
												86		
												87		
												88		
												89		
												90		
						D			N			91	GYP	
												92		
						D			N			93	ML-S	
94														
						95								
						96								
						97								
						98								
						99								
						100								

 WSP USA 508 West Stevens Street Carlsbad, New Mexico 88220					BH or PH Name:		Date:	
					BH01 (C-04494)		11/18/2020, 12/02/2020, 1/5/2021	
					Site Name:		Remuda North 25 Observation Well	
					RP or Incident Number:			
					LTE Job Number: TE012919039			
LITHOLOGIC / SOIL SAMPLING LOG					Logged By BB, LAD, FS		Method: Hollow Stem Auger, sonic	
Lat/Long:			Field Screening:		Hole Diameter:		Total Depth:	
					6.25", 4.25"		105'	
Comments: Lithologic log only, no field screenings								
Moisture Content	Chloride (ppm)	Vapor (ppm)	Staining	Sample #	Sample Depth (ft bgs)	Depth (ft bgs)	USCS/Rock Symbol	Lithology/Remarks
D			N			101	ML-S	99.5-105' : Sandy SILTSTONE, moist, brown, some gray-dark gray, poorly consolidated, 20% very fine grain sand, no stain, no odor
						102		
						103		
						104		
						105		
						106		TD @ 105' bgs (1/5/2021)
						107		
						108		
						109		
						110		
						111		
						112		
						113		
						114		
						115		
						116		
						117		
						118		
						119		
						120		
						121		
						122		
						123		
						124		
						125		



APPENDIX C

Photographic Log

**Photographic Log**

XTO Energy, Inc

Raider CS

nAPP2415554067



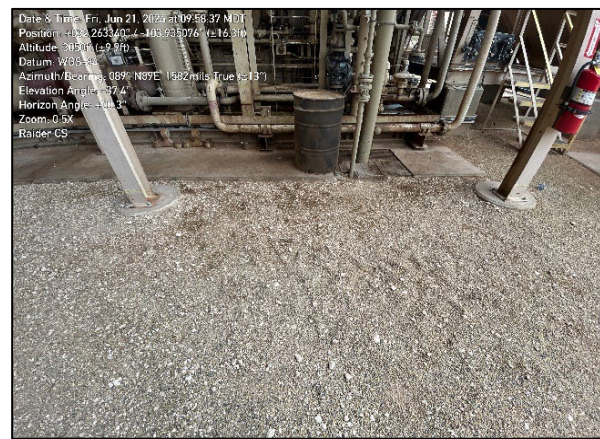
Photograph: 1 Date: 6/17/2024
Description: Compressor related to fire
View: Northeast



Photograph: 2 Date: 6/17/2024
Description: Source of the release
View: Southeast



Photograph: 3 Date: 6/21/2024
Description: Antifreeze line that disconnected
View: Southeast



Photograph: 4 Date: 6/21/2024
Description: Ground surface nearest release
View: Northeast



APPENDIX D

Laboratory Analytical Reports & Chain of Custody Documentation



PHONE (575) 393-2326 ° 101 E. MARLAND ° HOBBS, NM 88240

July 03, 2024

TRACY HILLARD
ENSOLUM, LLC
705 W WADLEY AVE.
MIDLAND, TX 79705

RE: RAIDER CS

Enclosed are the results of analyses for samples received by the laboratory on 06/26/24 14:49.

Cardinal Laboratories is accredited through Texas NELAP under certificate number TX-C24-00112. Accreditation applies to drinking water, non-potable water and solid and chemical materials. All accredited analytes are denoted by an asterisk (*). For a complete list of accredited analytes and matrices visit the TCEQ website at www.tceq.texas.gov/field/qa/lab_accred_certif.html.

Cardinal Laboratories is accredited through the State of Colorado Department of Public Health and Environment for:

Method EPA 552.2	Haloacetic Acids (HAA-5)
Method EPA 524.2	Total Trihalomethanes (TTHM)
Method EPA 524.4	Regulated VOCs (V1, V2, V3)

Accreditation applies to public drinking water matrices.

This report meets NELAP requirements and is made up of a cover page, analytical results, and a copy of the original chain-of-custody. If you have any questions concerning this report, please feel free to contact me.

Sincerely,

A handwritten signature in black ink that reads "Celey D. Keene".

Celey D. Keene
Lab Director/Quality Manager



PHONE (575) 393-2326 ° 101 E. MARLAND ° HOBBS, NM 88240

Analytical Results For:

ENSOLUM, LLC
 TRACY HILLARD
 705 W WADLEY AVE.
 MIDLAND TX, 79705
 Fax To:

Received: 06/26/2024
 Reported: 07/03/2024
 Project Name: RAIDER CS
 Project Number: 03C1558410
 Project Location: XTO 32.264543, -103.934814

Sampling Date: 06/21/2024
 Sampling Type: Soil
 Sampling Condition: Cool & Intact
 Sample Received By: Alyssa Parras

Sample ID: CS 01 0.5' (H243834-01)

BTEX 8021B		mg/kg		Analyzed By: JH					
Analyte	Result	Reporting Limit	Analyzed	Method Blank	BS	% Recovery	True Value QC	RPD	Qualifier
Benzene*	<0.050	0.050	07/02/2024	ND	1.99	99.6	2.00	3.84	
Toluene*	<0.050	0.050	07/02/2024	ND	2.16	108	2.00	4.28	
Ethylbenzene*	<0.050	0.050	07/02/2024	ND	2.17	109	2.00	4.65	
Total Xylenes*	<0.150	0.150	07/02/2024	ND	6.73	112	6.00	4.30	
Total BTEX	<0.300	0.300	07/02/2024	ND					

Surrogate: 4-Bromofluorobenzene (PID) 109 % 71.5-134

Chloride, SM4500Cl-B		mg/kg		Analyzed By: AC						
Analyte	Result	Reporting Limit	Analyzed	Method Blank	BS	% Recovery	True Value QC	RPD	Qualifier	
Chloride	32.0	16.0	07/02/2024	ND	416	104	400	3.77		

TPH 8015M		mg/kg		Analyzed By: MS					
Analyte	Result	Reporting Limit	Analyzed	Method Blank	BS	% Recovery	True Value QC	RPD	Qualifier
GRO C6-C10*	<10.0	10.0	07/02/2024	ND	208	104	200	3.62	
DRO >C10-C28*	<10.0	10.0	07/02/2024	ND	195	97.4	200	2.36	
EXT DRO >C28-C36	<10.0	10.0	07/02/2024	ND					

Surrogate: 1-Chlorooctane 102 % 48.2-134

Surrogate: 1-Chlorooctadecane 101 % 49.1-148

Cardinal Laboratories

*=Accredited Analyte

PLEASE NOTE: Liability and Damages. Cardinal's liability and client's exclusive remedy for any claim arising, whether based in contract or tort, shall be limited to the amount paid by client for analyses. All claims, including those for negligence and any other cause whatsoever shall be deemed waived unless made in writing and received by Cardinal within thirty (30) days after completion of the applicable service. In no event shall Cardinal be liable for incidental or consequential damages, including, without limitation, business interruptions, loss of use, or loss of profits incurred by client, its subsidiaries, affiliates or successors arising out of or related to the performance of the services hereunder by Cardinal, regardless of whether such claim is based upon any of the above stated reasons or otherwise. Results relate only to the samples identified above. This report shall not be reproduced except in full with written approval of Cardinal Laboratories.

Celey D. Keene, Lab Director/Quality Manager



PHONE (575) 393-2326 ° 101 E. MARLAND ° HOBBS, NM 88240

Notes and Definitions

ND	Analyte NOT DETECTED at or above the reporting limit
RPD	Relative Percent Difference
**	Samples not received at proper temperature of 6°C or below.
***	Insufficient time to reach temperature.
-	Chloride by SM4500Cl-B does not require samples be received at or below 6°C Samples reported on an as received basis (wet) unless otherwise noted on report

Cardinal Laboratories

*=Accredited Analyte

PLEASE NOTE: Liability and Damages. Cardinal's liability and client's exclusive remedy for any claim arising, whether based in contract or tort, shall be limited to the amount paid by client for analyses. All claims, including those for negligence and any other cause whatsoever shall be deemed waived unless made in writing and received by Cardinal within thirty (30) days after completion of the applicable service. In no event shall Cardinal be liable for incidental or consequential damages, including, without limitation, business interruptions, loss of use, or loss of profits incurred by client, its subsidiaries, affiliates or successors arising out of or related to the performance of the services hereunder by Cardinal, regardless of whether such claim is based upon any of the above stated reasons or otherwise. Results relate only to the samples identified above. This report shall not be reproduced except in full with written approval of Cardinal Laboratories.

A handwritten signature in black ink, appearing to read "Celey D. Keene".

Celey D. Keene, Lab Director/Quality Manager



101 East Marland, Hobbs, NM 88240
(575) 393-2326 FAX (575) 393-2476

CHAIN-OF-CUSTODY AND ANALYSIS REQUEST

Company Name: Ensolum, LLC				BILL TO				ANALYSIS REQUEST			
Project Manager: Tracy Hillard				P.O. #:							
Address: 601 N Marientfield Street, Suite 400				Company: XTOSenergy							
City: Midland				Attn: Amy Ruth							
State: TX Zip: 79701				Address: 3104 E. Greene							
Phone #: 575-937-3906 Fax #:				City: Carlsbad							
Project #: 080558410 Project Owner: XTO				State: NM Zip: 88720							
Project Name: Raider CS				Phone #: 937-661-0571							
Project Location: 38.264543, -103.934814				Fax #:							
Sampler Name: Tracy Hillard											

FOR LAB USE ONLY		LAB I.D.		Sample I.D.		Depth (feet)		(G)RAB OR (C)OMP.		# CONTAINERS		MATRIX		PRESERV		SAMPLING		DATE		TIME		TPH 8015		BTEX 8021		Chloride 4500			
		H243834		CS01		0.5		C2		X		GROUNDWATER				DATE		TIME		X		X		X					
												WASTEWATER																	
												SOIL																	
												OIL																	
												SLUDGE																	
												OTHER :																	
												ACID/BASE:																	
												ICE / COOL		X															
												OTHER :																	

PLEASE NOTE: Liability and Damages: Cardinal's liability and client's exclusive remedy for any claim arising whether based in contract or tort, shall be limited to the amount paid by the client for the analyses. All claims including those for negligence and any other cause whatsoever shall be deemed waived unless made in writing and received by Cardinal within 30 days after completion of the applicable service. In no event shall Cardinal be liable for incidental or consequential damages, including without limitation, business interruptions, loss of use, or loss of profits incurred by client, its subsidiaries, affiliates or successors arising out of or related to the performance of services hereunder by Cardinal, regardless of whether such claim is based upon any of the above stated reasons or otherwise.

Relinquished By: [Signature]		Date: 8/26/24		Received By: [Signature]		Date: 8/26/24	
Retained By: [Signature]		Time: 8:00		Received By: [Signature]		Time: 14:44	
Delivered By: (Circle One)		Observed Temp. °C: 5.6°C		Sample Condition: Cool Intact		CHECKED BY: (Initials) AP	
Sampler - UPS - Bus - Other:		Corrected Temp. °C:		Cool Intact		Thermometer ID: #113	
				Yes <input type="checkbox"/> No <input type="checkbox"/>		Correction Factor: 0.5°C	
				Yes <input type="checkbox"/> No <input type="checkbox"/>		Standard: Rusin	
				Yes <input type="checkbox"/> No <input type="checkbox"/>		Bacteria (only) Sample Condition	
				Yes <input type="checkbox"/> No <input type="checkbox"/>		Cool Intact	
				Yes <input type="checkbox"/> No <input type="checkbox"/>		Observed Temp. °C	
				Yes <input type="checkbox"/> No <input type="checkbox"/>		Corrected Temp. °C	

REMARKS: NAPP 2413554067
lost after 2175031001

Turnaround Time: Standard ☒ Rush ☐

Thermometer ID: #113

Correction Factor: 0.5°C

Bacteria (only) Sample Condition

Cool Intact

Observed Temp. °C

Corrected Temp. °C

District I
1625 N. French Dr., Hobbs, NM 88240
Phone:(575) 393-6161 Fax:(575) 393-0720
District II
811 S. First St., Artesia, NM 88210
Phone:(575) 748-1283 Fax:(575) 748-9720
District III
1000 Rio Brazos Rd., Aztec, NM 87410
Phone:(505) 334-6178 Fax:(505) 334-6170
District IV
1220 S. St Francis Dr., Santa Fe, NM 87505
Phone:(505) 476-3470 Fax:(505) 476-3462

State of New Mexico
Energy, Minerals and Natural Resources
Oil Conservation Division
1220 S. St Francis Dr.
Santa Fe, NM 87505

QUESTIONS

Action 375241

QUESTIONS

Operator: XTO ENERGY, INC 6401 Holiday Hill Road Midland, TX 79707	OGRID:	5380
	Action Number:	375241
	Action Type:	[C-141] Remediation Closure Request C-141 (C-141-v-Closure)

QUESTIONS

Prerequisites	
Incident ID (n#)	nAPP2415554067
Incident Name	NAPP2415554067 RAIDER CS @ 0
Incident Type	Fire
Incident Status	Remediation Closure Report Received

Location of Release Source	
Please answer all the questions in this group.	
Site Name	Raider CS
Date Release Discovered	05/27/2024
Surface Owner	State

Incident Details	
Please answer all the questions in this group.	
Incident Type	Fire
Did this release result in a fire or is the result of a fire	Yes
Did this release result in any injuries	No
Has this release reached or does it have a reasonable probability of reaching a watercourse	No
Has this release endangered or does it have a reasonable probability of endangering public health	No
Has this release substantially damaged or will it substantially damage property or the environment	No
Is this release of a volume that is or may with reasonable probability be detrimental to fresh water	No

Nature and Volume of Release	
Material(s) released, please answer all that apply below. Any calculations or specific justifications for the volumes provided should be attached to the follow-up C-141 submission.	
Crude Oil Released (bbls) Details	Not answered.
Produced Water Released (bbls) Details	Not answered.
Is the concentration of chloride in the produced water >10,000 mg/l	No
Condensate Released (bbls) Details	Not answered.
Natural Gas Vented (Mcf) Details	Not answered.
Natural Gas Flared (Mcf) Details	Not answered.
Other Released Details	Cause: Equipment Failure Gas Compressor Station Chemical (Specify) Released: 0 BBL Recovered: 0 BBL Lost: 0 BBL.
Are there additional details for the questions above (i.e. any answer containing Other, Specify, Unknown, and/or Fire, or any negative lost amounts)	Antifreeze/Coolant

District I

1625 N. French Dr., Hobbs, NM 88240
Phone:(575) 393-6161 Fax:(575) 393-0720

District II

811 S. First St., Artesia, NM 88210
Phone:(575) 748-1283 Fax:(575) 748-9720

District III

1000 Rio Brazos Rd., Aztec, NM 87410
Phone:(505) 334-6178 Fax:(505) 334-6170

District IV

1220 S. St Francis Dr., Santa Fe, NM 87505
Phone:(505) 476-3470 Fax:(505) 476-3462

State of New Mexico
Energy, Minerals and Natural Resources
Oil Conservation Division
1220 S. St Francis Dr.
Santa Fe, NM 87505

QUESTIONS, Page 2

Action 375241

QUESTIONS (continued)

Operator: XTO ENERGY, INC 6401 Holiday Hill Road Midland, TX 79707	OGRID:	5380
	Action Number:	375241
	Action Type:	[C-141] Remediation Closure Request C-141 (C-141-v-Closure)

QUESTIONS

Nature and Volume of Release (continued)	
Is this a gas only submission (i.e. only significant Mcf values reported)	More info needed to determine if this will be treated as a "gas only" report.
Was this a major release as defined by Subsection A of 19.15.29.7 NMAC	Yes
Reasons why this would be considered a submission for a notification of a major release	From paragraph A. "Major release" determine using: (2) an unauthorized release of a volume that: (a) results in a fire or is the result of a fire.
With the implementation of the 19.15.27 NMAC (05/25/2021), venting and/or flaring of natural gas (i.e. gas only) are to be submitted on the C-129 form.	

Initial Response

The responsible party must undertake the following actions immediately unless they could create a safety hazard that would result in injury.

The source of the release has been stopped	True
The impacted area has been secured to protect human health and the environment	True
Released materials have been contained via the use of berms or dikes, absorbent pads, or other containment devices	True
All free liquids and recoverable materials have been removed and managed appropriately	True
If all the actions described above have not been undertaken, explain why	Not answered.

Per Paragraph (4) of Subsection B of 19.15.29.8 NMAC the responsible party may commence remediation immediately after discovery of a release. If remediation has begun, please prepare and attach a narrative of actions to date in the follow-up C-141 submission. If remedial efforts have been successfully completed or if the release occurred within a lined containment area (see Subparagraph (a) of Paragraph (5) of Subsection A of 19.15.29.11 NMAC), please prepare and attach all information needed for closure evaluation in the follow-up C-141 submission.

I hereby certify that the information given above is true and complete to the best of my knowledge and understand that pursuant to OCD rules and regulations all operators are required to report and/or file certain release notifications and perform corrective actions for releases which may endanger public health or the environment. The acceptance of a C-141 report by the OCD does not relieve the operator of liability should their operations have failed to adequately investigate and remediate contamination that pose a threat to groundwater, surface water, human health or the environment. In addition, OCD acceptance of a C-141 report does not relieve the operator of responsibility for compliance with any other federal, state, or local laws and/or regulations.

I hereby agree and sign off to the above statement	Name: Colton Brown Title: Environmental Advisor Email: colton.s.brown@exxonmobil.com Date: 08/19/2024
--	--

District I

1625 N. French Dr., Hobbs, NM 88240
Phone:(575) 393-6161 Fax:(575) 393-0720

District II

811 S. First St., Artesia, NM 88210
Phone:(575) 748-1283 Fax:(575) 748-9720

District III

1000 Rio Brazos Rd., Aztec, NM 87410
Phone:(505) 334-6178 Fax:(505) 334-6170

District IV

1220 S. St Francis Dr., Santa Fe, NM 87505
Phone:(505) 476-3470 Fax:(505) 476-3462

State of New Mexico
Energy, Minerals and Natural Resources
Oil Conservation Division
1220 S. St Francis Dr.
Santa Fe, NM 87505

QUESTIONS, Page 3

Action 375241

QUESTIONS (continued)

Operator: XTO ENERGY, INC 6401 Holiday Hill Road Midland, TX 79707	OGRID:
	5380
	Action Number:
	375241
Action Type:	
[C-141] Remediation Closure Request C-141 (C-141-v-Closure)	

QUESTIONS**Site Characterization**

Please answer all the questions in this group (only required when seeking remediation plan approval and beyond). This information must be provided to the appropriate district office no later than 90 days after the release discovery date.

What is the shallowest depth to groundwater beneath the area affected by the release in feet below ground surface (ft bgs)	Between 100 and 500 (ft.)
What method was used to determine the depth to ground water	NM OSE iWaters Database Search
Did this release impact groundwater or surface water	No
What is the minimum distance, between the closest lateral extents of the release and the following surface areas:	
A continuously flowing watercourse or any other significant watercourse	Between 300 and 500 (ft.)
Any lakebed, sinkhole, or playa lake (measured from the ordinary high-water mark)	Between 1 and 5 (mi.)
An occupied permanent residence, school, hospital, institution, or church	Greater than 5 (mi.)
A spring or a private domestic fresh water well used by less than five households for domestic or stock watering purposes	Between 1 and 5 (mi.)
Any other fresh water well or spring	Between 1 and 5 (mi.)
Incorporated municipal boundaries or a defined municipal fresh water well field	Greater than 5 (mi.)
A wetland	Between 1000 (ft.) and ½ (mi.)
A subsurface mine	Greater than 5 (mi.)
An (non-karst) unstable area	Between ½ and 1 (mi.)
Categorize the risk of this well / site being in a karst geology	Medium
A 100-year floodplain	Between 1 and 5 (mi.)
Did the release impact areas not on an exploration, development, production, or storage site	No

Remediation Plan

Please answer all the questions that apply or are indicated. This information must be provided to the appropriate district office no later than 90 days after the release discovery date.

Requesting a remediation plan approval with this submission	Yes
Attach a comprehensive report demonstrating the lateral and vertical extents of soil contamination associated with the release have been determined, pursuant to 19.15.29.11 NMAC and 19.15.29.13 NMAC.	
Have the lateral and vertical extents of contamination been fully delineated	Yes
Was this release entirely contained within a lined containment area	No

Soil Contamination Sampling: (Provide the highest observable value for each, in milligrams per kilograms.)

Chloride	(EPA 300.0 or SM4500 Cl B)	32
TPH (GRO+DRO+MRO)	(EPA SW-846 Method 8015M)	0
GRO+DRO	(EPA SW-846 Method 8015M)	0
BTEX	(EPA SW-846 Method 8021B or 8260B)	0
Benzene	(EPA SW-846 Method 8021B or 8260B)	0

Per Subsection B of 19.15.29.11 NMAC unless the site characterization report includes completed efforts at remediation, the report must include a proposed remediation plan in accordance with 19.15.29.12 NMAC, which includes the anticipated timelines for beginning and completing the remediation.

On what estimated date will the remediation commence	06/17/2024
On what date will (or did) the final sampling or liner inspection occur	06/24/2024
On what date will (or was) the remediation complete(d)	06/24/2024
What is the estimated surface area (in square feet) that will be reclaimed	200
What is the estimated volume (in cubic yards) that will be reclaimed	0
What is the estimated surface area (in square feet) that will be remediated	200
What is the estimated volume (in cubic yards) that will be remediated	0

These estimated dates and measurements are recognized to be the best guess or calculation at the time of submission and may (be) change(d) over time as more remediation efforts are completed.

The OCD recognizes that proposed remediation measures may have to be minimally adjusted in accordance with the physical realities encountered during remediation. If the responsible party has any need to significantly deviate from the remediation plan proposed, then it should consult with the division to determine if another remediation plan submission is required.

District I

1625 N. French Dr., Hobbs, NM 88240
Phone:(575) 393-6161 Fax:(575) 393-0720

District II

811 S. First St., Artesia, NM 88210
Phone:(575) 748-1283 Fax:(575) 748-9720

District III

1000 Rio Brazos Rd., Aztec, NM 87410
Phone:(505) 334-6178 Fax:(505) 334-6170

District IV

1220 S. St Francis Dr., Santa Fe, NM 87505
Phone:(505) 476-3470 Fax:(505) 476-3462

State of New Mexico
Energy, Minerals and Natural Resources
Oil Conservation Division
1220 S. St Francis Dr.
Santa Fe, NM 87505

QUESTIONS, Page 4

Action 375241

QUESTIONS (continued)

Operator: XTO ENERGY, INC 6401 Holiday Hill Road Midland, TX 79707	OGRID: 5380
	Action Number: 375241
	Action Type:
	[C-141] Remediation Closure Request C-141 (C-141-v-Closure)

QUESTIONS

Remediation Plan (continued)	
<i>Please answer all the questions that apply or are indicated. This information must be provided to the appropriate district office no later than 90 days after the release discovery date.</i>	
This remediation will (or is expected to) utilize the following processes to remediate / reduce contaminants:	
<i>(Select all answers below that apply.)</i>	
(Ex Situ) Excavation and off-site disposal (i.e. dig and haul, hydrovac, etc.)	Yes
Which OCD approved facility will be used for off-site disposal	HALFWAY DISPOSAL AND LANDFILL [fEEM0112334510]
OR which OCD approved well (API) will be used for off-site disposal	Not answered.
OR is the off-site disposal site, to be used, out-of-state	Not answered.
OR is the off-site disposal site, to be used, an NMED facility	Not answered.
(Ex Situ) Excavation and on-site remediation (i.e. On-Site Land Farms)	Not answered.
(In Situ) Soil Vapor Extraction	Not answered.
(In Situ) Chemical processing (i.e. Soil Shredding, Potassium Permanganate, etc.)	Not answered.
(In Situ) Biological processing (i.e. Microbes / Fertilizer, etc.)	Not answered.
(In Situ) Physical processing (i.e. Soil Washing, Gypsum, Disking, etc.)	Not answered.
Ground Water Abatement pursuant to 19.15.30 NMAC	Not answered.
OTHER (Non-listed remedial process)	Not answered.
<i>Per Subsection B of 19.15.29.11 NMAC unless the site characterization report includes completed efforts at remediation, the report must include a proposed remediation plan in accordance with 19.15.29.12 NMAC, which includes the anticipated timelines for beginning and completing the remediation.</i>	
I hereby certify that the information given above is true and complete to the best of my knowledge and understand that pursuant to OCD rules and regulations all operators are required to report and/or file certain release notifications and perform corrective actions for releases which may endanger public health or the environment. The acceptance of a C-141 report by the OCD does not relieve the operator of liability should their operations have failed to adequately investigate and remediate contamination that pose a threat to groundwater, surface water, human health or the environment. In addition, OCD acceptance of a C-141 report does not relieve the operator of responsibility for compliance with any other federal, state, or local laws and/or regulations.	
I hereby agree and sign off to the above statement	Name: Colton Brown Title: Environmental Advisor Email: colton.s.brown@exxonmobil.com Date: 08/19/2024
<i>The OCD recognizes that proposed remediation measures may have to be minimally adjusted in accordance with the physical realities encountered during remediation. If the responsible party has any need to significantly deviate from the remediation plan proposed, then it should consult with the division to determine if another remediation plan submission is required.</i>	

District I
1625 N. French Dr., Hobbs, NM 88240
Phone:(575) 393-6161 Fax:(575) 393-0720
District II
811 S. First St., Artesia, NM 88210
Phone:(575) 748-1283 Fax:(575) 748-9720
District III
1000 Rio Brazos Rd., Aztec, NM 87410
Phone:(505) 334-6178 Fax:(505) 334-6170
District IV
1220 S. St Francis Dr., Santa Fe, NM 87505
Phone:(505) 476-3470 Fax:(505) 476-3462

State of New Mexico
Energy, Minerals and Natural Resources
Oil Conservation Division
1220 S. St Francis Dr.
Santa Fe, NM 87505

QUESTIONS, Page 5

Action 375241

QUESTIONS (continued)

Operator: XTO ENERGY, INC 6401 Holiday Hill Road Midland, TX 79707	OGRID:	5380
	Action Number:	375241
	Action Type:	
	[C-141] Remediation Closure Request C-141 (C-141-v-Closure)	

QUESTIONS

Deferral Requests Only	
Only answer the questions in this group if seeking a deferral upon approval this submission. Each of the following items must be confirmed as part of any request for deferral of remediation.	
Requesting a deferral of the remediation closure due date with the approval of this submission	No

District I

1625 N. French Dr., Hobbs, NM 88240
Phone:(575) 393-6161 Fax:(575) 393-0720

District II

811 S. First St., Artesia, NM 88210
Phone:(575) 748-1283 Fax:(575) 748-9720

District III

1000 Rio Brazos Rd., Aztec, NM 87410
Phone:(505) 334-6178 Fax:(505) 334-6170

District IV

1220 S. St Francis Dr., Santa Fe, NM 87505
Phone:(505) 476-3470 Fax:(505) 476-3462

State of New Mexico
Energy, Minerals and Natural Resources
Oil Conservation Division
1220 S. St Francis Dr.
Santa Fe, NM 87505

QUESTIONS, Page 6

Action 375241

QUESTIONS (continued)

Operator: XTO ENERGY, INC 6401 Holiday Hill Road Midland, TX 79707	OGRID: 5380
	Action Number: 375241
	Action Type: [C-141] Remediation Closure Request C-141 (C-141-v-Closure)

QUESTIONS

Sampling Event Information	
Last sampling notification (C-141N) recorded	354196
Sampling date pursuant to Subparagraph (a) of Paragraph (1) of Subsection D of 19.15.29.12 NMAC	06/21/2024
What was the (estimated) number of samples that were to be gathered	20
What was the sampling surface area in square feet	4000

Remediation Closure Request

Only answer the questions in this group if seeking remediation closure for this release because all remediation steps have been completed.

Requesting a remediation closure approval with this submission	Yes
Have the lateral and vertical extents of contamination been fully delineated	Yes
Was this release entirely contained within a lined containment area	No
All areas reasonably needed for production or subsequent drilling operations have been stabilized, returned to the sites existing grade, and have a soil cover that prevents ponding of water, minimizing dust and erosion	Yes
What was the total surface area (in square feet) remediated	200
What was the total volume (cubic yards) remediated	0
All areas not reasonably needed for production or subsequent drilling operations have been reclaimed to contain a minimum of four feet of non-waste contain earthen material with concentrations less than 600 mg/kg chlorides, 100 mg/kg TPH, 50 mg/kg BTEX, and 10 mg/kg Benzene	Yes
What was the total surface area (in square feet) reclaimed	200
What was the total volume (in cubic yards) reclaimed	0
Summarize any additional remediation activities not included by answers (above)	Site assessment activities were conducted at the Site to assess for the presence or absence of impacted soil resulting from the May 27, 2024, coolant related fire. Laboratory analytical results for the soil sample collected around the compressor, indicated that all COCs concentrations were compliant with the Site Closure Criteria and no ground surface staining from the fire was visible. Based on the soil sample analytical results, no further remediation was required. XTO respectfully requests closure and no further action for Incident Number nAPP2415554067.

The responsible party must attach information demonstrating they have complied with all applicable closure requirements and any conditions or directives of the OCD. This demonstration should be in the form of a comprehensive report (in .pdf format) including a scaled site map, sampling diagrams, relevant field notes, photographs of any excavation prior to backfilling, laboratory data including chain of custody documents of final sampling, and a narrative of the remedial activities. Refer to 19.15.29.12 NMAC.

I hereby certify that the information given above is true and complete to the best of my knowledge and understand that pursuant to OCD rules and regulations all operators are required to report and/or file certain release notifications and perform corrective actions for releases which may endanger public health or the environment. The acceptance of a C-141 report by the OCD does not relieve the operator of liability should their operations have failed to adequately investigate and remediate contamination that pose a threat to groundwater, surface water, human health or the environment. In addition, OCD acceptance of a C-141 report does not relieve the operator of responsibility for compliance with any other federal, state, or local laws and/or regulations. The responsible party acknowledges they must substantially restore, reclaim, and re-vegetate the impacted surface area to the conditions that existed prior to the release or their final land use in accordance with 19.15.29.13 NMAC including notification to the OCD when reclamation and re-vegetation are complete.

I hereby agree and sign off to the above statement	Name: Colton Brown Title: Environmental Advisor Email: colton.s.brown@exxonmobil.com Date: 08/19/2024
--	--

District I
1625 N. French Dr., Hobbs, NM 88240
Phone:(575) 393-6161 Fax:(575) 393-0720
District II
811 S. First St., Artesia, NM 88210
Phone:(575) 748-1283 Fax:(575) 748-9720
District III
1000 Rio Brazos Rd., Aztec, NM 87410
Phone:(505) 334-6178 Fax:(505) 334-6170
District IV
1220 S. St Francis Dr., Santa Fe, NM 87505
Phone:(505) 476-3470 Fax:(505) 476-3462

State of New Mexico
Energy, Minerals and Natural Resources
Oil Conservation Division
1220 S. St Francis Dr.
Santa Fe, NM 87505

QUESTIONS, Page 7

Action 375241

QUESTIONS (continued)

Operator: XTO ENERGY, INC 6401 Holiday Hill Road Midland, TX 79707	OGRID:	5380
	Action Number:	375241
	Action Type:	
	[C-141] Remediation Closure Request C-141 (C-141-v-Closure)	

QUESTIONS

Reclamation Report	
Only answer the questions in this group if all reclamation steps have been completed.	
Requesting a reclamation approval with this submission	No

District I
1625 N. French Dr., Hobbs, NM 88240
Phone:(575) 393-6161 Fax:(575) 393-0720
District II
811 S. First St., Artesia, NM 88210
Phone:(575) 748-1283 Fax:(575) 748-9720
District III
1000 Rio Brazos Rd., Aztec, NM 87410
Phone:(505) 334-6178 Fax:(505) 334-6170
District IV
1220 S. St Francis Dr., Santa Fe, NM 87505
Phone:(505) 476-3470 Fax:(505) 476-3462

State of New Mexico
Energy, Minerals and Natural Resources
Oil Conservation Division
1220 S. St Francis Dr.
Santa Fe, NM 87505

CONDITIONS

Action 375241

CONDITIONS

Operator: XTO ENERGY, INC 6401 Holiday Hill Road Midland, TX 79707	OGRID: 5380
	Action Number: 375241
	Action Type: [C-141] Remediation Closure Request C-141 (C-141-v-Closure)

CONDITIONS

Created By	Condition	Condition Date
scott.rodgers	None	8/22/2024