

RIGHT MEOW 31 CTB 7

07/27/2024

OCD INCIDENT nAPP2421124014

Spills In Lined Containment	
Measurements Of Standing Fluid	
Length(Ft)	68
Width(Ft)	68
Depth(in.)	1
Total Capacity without tank displacements (bbls)	68.63
No. of 500 bbl Tanks In Standing Fluid	6
No. of Other Tanks In Standing Fluid	0
OD Of Other Tanks In Standing Fluid(feet)	0
Total Volume of standing fluid accounting for tank displacement.	51.84



---

# LINER INSPECTION CLOSURE REPORT

---

Incident ID NAPP2421124014

**Right Meow 31 CTB 7**

Facility ID fAPP2125751032

Prepared By:  
Pima Environmental Services, LLC

Prepared For:  
Devon Energy Production, LP

September 2, 2024  
Pima Environmental Services, LLC  
5614 N Lovington Hwy, Hobbs, NM 88240

September 2, 2024

NMOCD District 2  
811 S. First St  
Artesia, NM, 88210

**RE: Liner Inspection and Closure Report  
Right Meow 31 CTB 7  
Facility ID: fAPP2125751032  
GPS : Latitude 32.265538 Longitude -103.710866  
UL- B, Section 31, Township 23S, Range 32E  
Lea County, NM  
NMOCD Reference No. NAPP2421124014**

Devon Energy Production Company (Devon) has contracted Pima Environmental Services, LLC (Pima) to perform a liner inspection and prepare this closure report for a produced water release that occurred at the Right Meow 31 CTB 7 (Right Meow). This incident was assigned Incident ID:NAPP2421124014, by the New Mexico Oil Conservation Division (NMOCD).

#### Site Information and Site Characterization

The Right Meow is located approximately thirty-four (34) miles southwest of Eunice, NM. This spill site is in Unit B, Section 31, Township 23S, Range 32E, Latitude 32.265538 Longitude -103.710866, Lea County, NM. A Location Map can be found in Figure 1.

Based upon New Mexico Office of the State Engineer ( C-04712 POD 1) well water data, depth to the nearest groundwater in this area is 55 feet belowgrade surface (BGS). located approximately 0.32 miles from the Right Meow. According to the United States Geological Survey ( USGS 321609103445901 23S.31E.26.34411) well water data, depth to the nearest groundwater in this area is 100 feet BGS. See Appendix A for referenced water surveys and water related maps. The Right Meow is in a low karst area (Figure 3). A Topographic Map can be found in Figure 2.

#### Release Information

**NAPP2421124014:** On July 27, 2024, A pump failure caused a release in the lined containment. Approximately 52 barrels (bbls) of produced water were released from the pump into the lined secondary containment. A vacuum truck was dispatched and recovered approximately 47 bbls of fluid from the lined SPCC containment ring. Once the standing fluids were removed, the liner was visually inspected by Devon field staff for any pinholes or punctures, and none were found. Based on this inspection, there is no evidence that the spilled fluids left the containment. The remaining 5 bbls were recovered during the cleanup of the containment.

A Site Map can be found in Figure 4.

#### Site Assessment and Liner Inspection

On August 27, 2024, Pima personnel mobilized equipment to the site to perform power washing of the liner and containment. A vacuum truck accompanied the crew to recover the power washing fluids. During this process, the remaining 5 bbls of fluid missed during the initial recovery effort were also recovered.

On August 30, 2024, after submitting the 48-hour notification application ID: 378456 to the OCD, Pima Environmental conducted a liner inspection at this location. Pima concluded that the liner and containment maintained their integrity and successfully retained the fluids. The liner inspection form and photographic documentation can be found in Appendix C.

**Closure Request**

After careful review, Pima requests that this incident ID: NAPP2421124014, be closed. Devon has complied with the applicable closure requirements.

Should you have any questions or need additional information, please feel free to contact:

Devon Energy – Dale Woodall at 575-748-0167 or Dale.Woodall@dvn.com.

Pima Environmental – Gio Gomez at 806-782-1151 or Gio@pimaoil.com.

Respectfully,

*Gio Gomez*

Gio Gomez

Project Manager

Pima Environmental Services, LLC

**Attachments**

Figures:

- 1- Location Map
- 2- Topographic Map
- 3- Karst Map
- 4- Site Map

Appendices:

Appendix A- Referenced Water Surveys

Appendix B- Soil Survey & Soil Maps, Geologic Data, FEMA, Wetlands

Appendix C- 48 Hour Notification, Liner Inspection Form

Appendix D- Photographic Documentation

## Figures:

Figure 1- Location Map

Figure 2- Topographic Map

Figure 3- Karst Map


Figure 4- Site Map




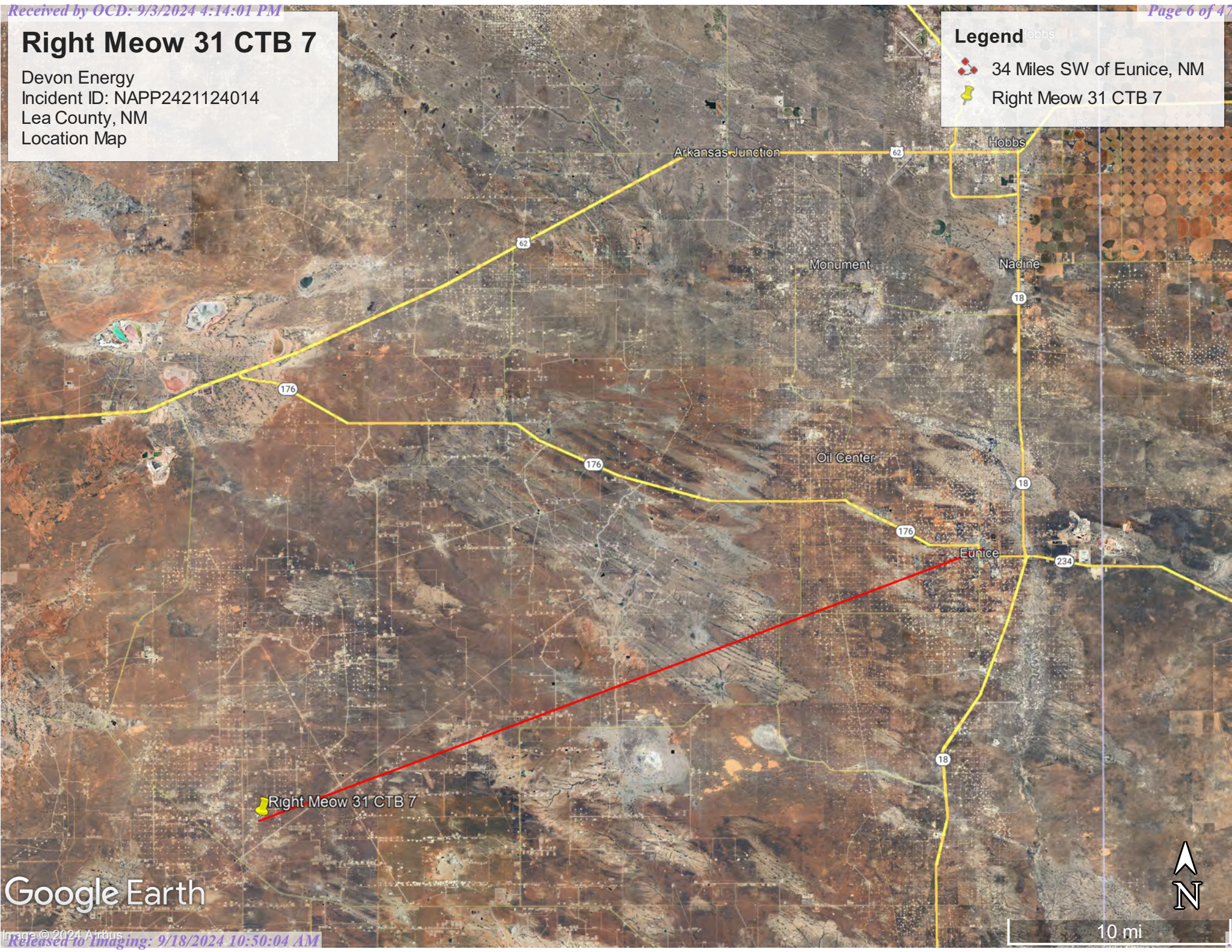
# Right Meow 31 CTB 7

Devon Energy  
Incident ID: NAPP2421124014  
Lea County, NM  
Location Map

**Legend**

 34 Miles SW of Eunice, NM

 Right Meow 31 CTB 7



Google Earth



# Right Meow 31 CTB 7

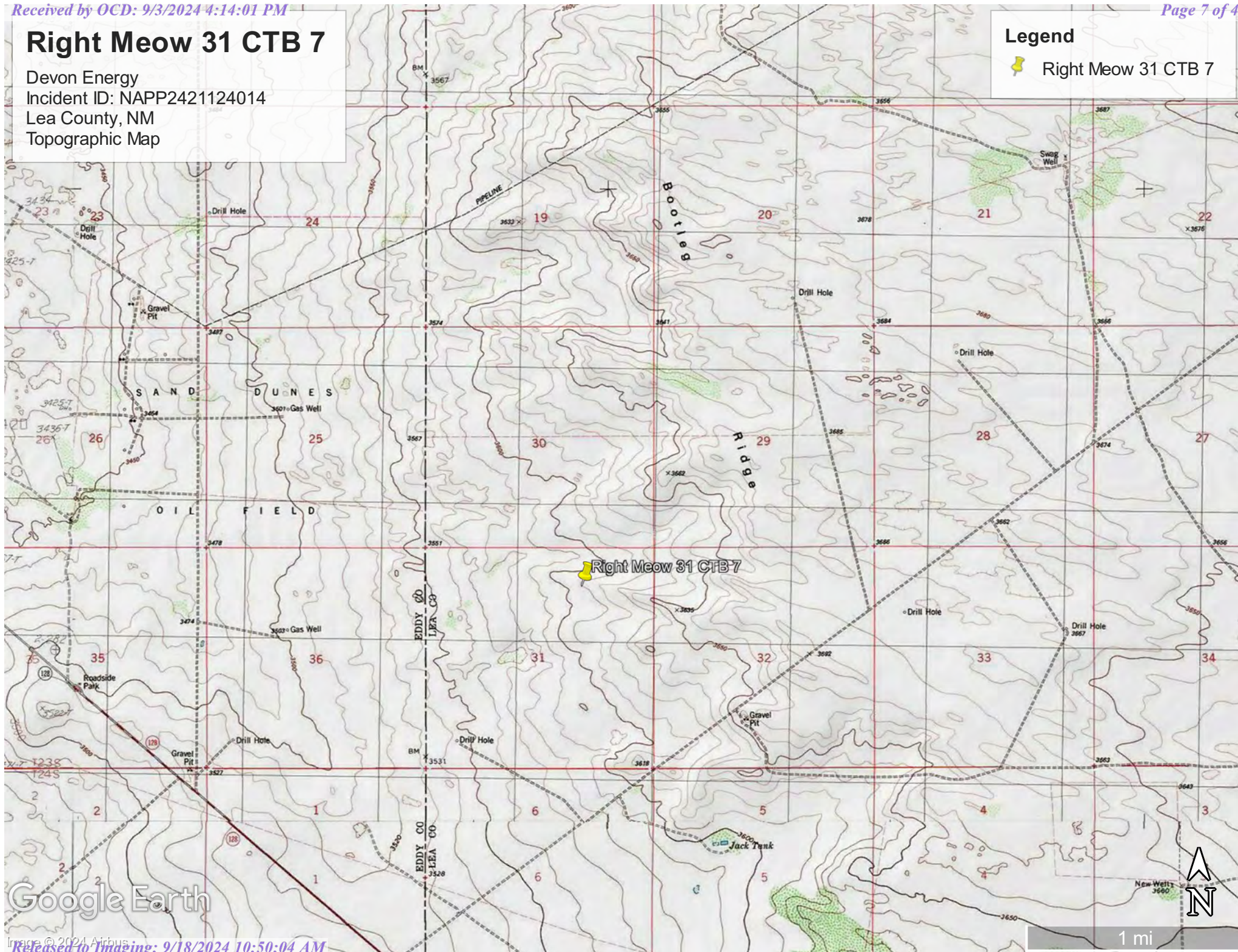
Devon Energy

Incident ID: NAPP2421124014

Lea County, NM

Topographic Map

## Legend

 Right Meow 31 CTB 7





Google Earth

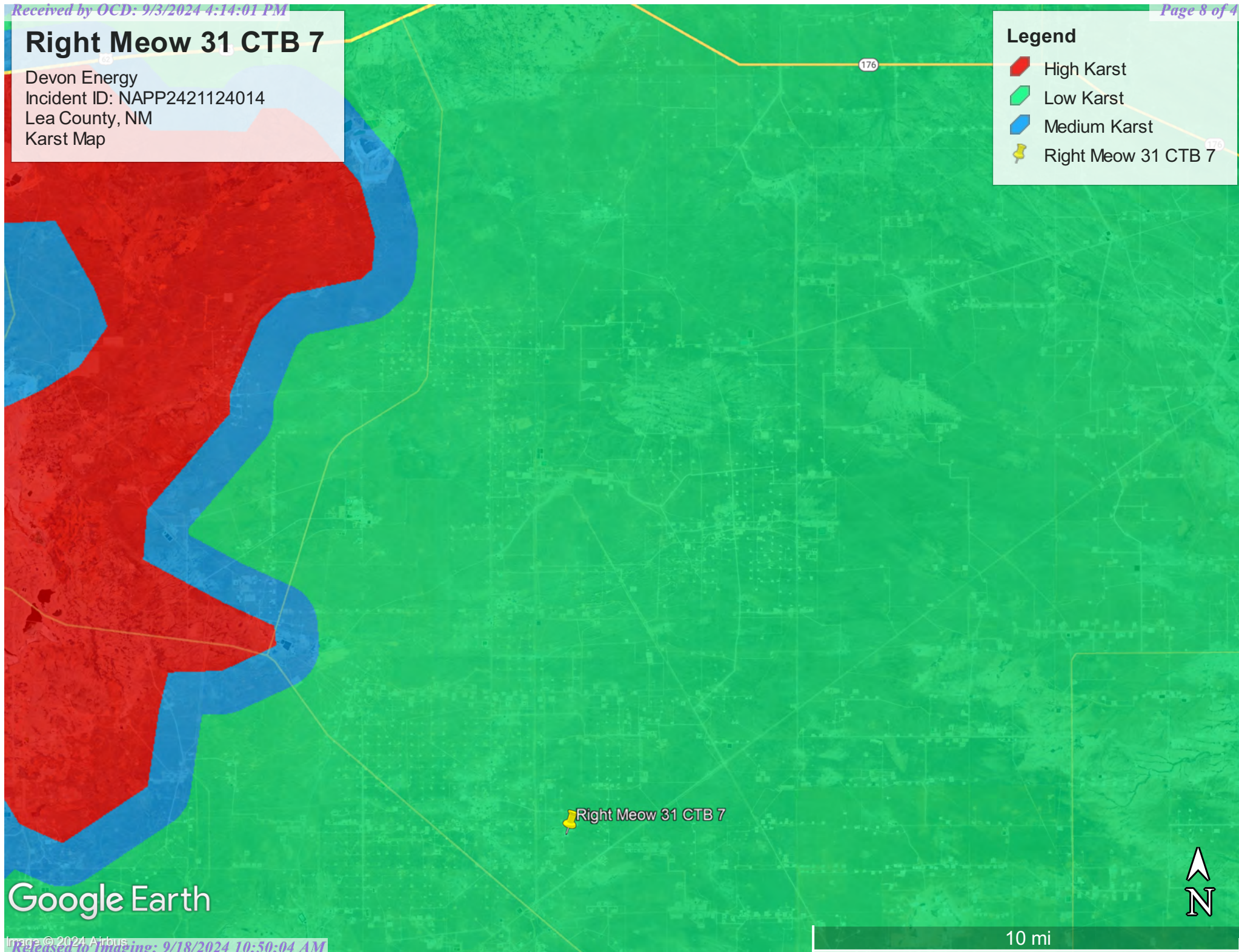


# Right Meow 31 CTB 7

Devon Energy  
Incident ID: NAPP2421124014  
Lea County, NM  
Karst Map

## Legend

-  High Karst
-  Low Karst
-  Medium Karst
-  Right Meow 31 CTB 7





Google Earth



## Right Meow 31 CTB 7

Devon Energy  
Incident ID: NAPP2421124014  
Lea County, NM  
Site Map

### Legend

-  Right Meow 31 CTB 7
-  Spill Area- 4,855 Sqft



Google Earth

## Appendix A

### Water Surveys:

- OSE
- USGS
- Surface Water Map





# WELL RECORD & LOG

OFFICE OF THE STATE ENGINEER

[www.ose.state.nm.us](http://www.ose.state.nm.us)

1. GENERAL AND WELL LOCATION	OSE POD NO. (WELL NO.) <b>C-4712 POD 1</b>		WELL TAG ID NO.		OSE FILE NO(S). <b>C-4712</b>		
	WELL OWNER NAME(S) <b>Harvard Petroleum Company</b>				PHONE (OPTIONAL)		
	WELL OWNER MAILING ADDRESS <b>PO Box 936</b>				CITY <b>Roswell</b>	STATE <b>NM</b>	
					ZIP <b>88202</b>		
WELL LOCATION (FROM GPS)	DEGREES	MINUTES	SECONDS		* ACCURACY REQUIRED: ONE TENTH OF A SECOND		
	LATITUDE <b>32</b>	<b>15</b>	<b>46.1</b>	N	* DATUM REQUIRED: WGS 84		
	LONGITUDE <b>-103</b>	<b>42</b>	<b>58.4</b>	W			
DESCRIPTION RELATING WELL LOCATION TO STREET ADDRESS AND COMMON LANDMARKS - PLSS (SECTION, TOWNSHIP, RANGE) WHERE AVAILABLE							
2. DRILLING & CASING INFORMATION	LICENSE NO. <b>1833</b>		NAME OF LICENSED DRILLER <b>Jason Maley</b>		NAME OF WELL DRILLING COMPANY <b>Vision Resources</b>		
	DRILLING STARTED <b>Mar 9, 2023</b>	DRILLING ENDED <b>3/9/23</b>	DEPTH OF COMPLETED WELL (FT) <b>55</b>	BORE HOLE DEPTH (FT) <b>55</b>	DEPTH WATER FIRST ENCOUNTERED (FT) <b>Dry</b>		
	COMPLETED WELL IS: <input type="checkbox"/> ARTESIAN *add Centralizer info below <input checked="" type="checkbox"/> DRY HOLE <input type="checkbox"/> SHALLOW (UNCONFINED)				STATIC WATER LEVEL IN COMPLETED WELL (FT) <b>Dry</b>	DATE STATIC MEASURED <b>Dry</b>	
	DRILLING FLUID: <input checked="" type="checkbox"/> AIR <input type="checkbox"/> MUD ADDITIVES - SPECIFY:						
	DRILLING METHOD: <input checked="" type="checkbox"/> ROTARY <input type="checkbox"/> HAMMER <input type="checkbox"/> CABLE TOOL <input type="checkbox"/> OTHER - SPECIFY:				CHECK HERE IF PITLESS ADAPTER IS INSTALLED <input type="checkbox"/>		
	DEPTH (feet bgl)		BORE HOLE DIAM. (inches)	CASING MATERIAL AND/OR GRADE (include each casing string, and note sections of screen)	CASING CONNECTION TYPE (add coupling diameter)	CASING INSIDE DIAM. (inches)	CASING WALL THICKNESS (inches)
	FROM	TO					
	<b>0</b>	<b>45</b>	<b>6</b>	<b>2" pvc sch 40</b>	<b>Thread</b>	<b>2"</b>	<b>Sch 40</b>
	<b>45</b>	<b>55</b>	<b>6</b>	<b>2" pvc sch 40</b>	<b>Tread</b>	<b>2"</b>	<b>Sch 40</b>
3. ANNULAR MATERIAL	DEPTH (feet bgl)		BORE HOLE DIAM. (inches)	LIST ANNULAR SEAL MATERIAL AND GRAVEL PACK SIZE-RANGE BY INTERVAL <i>*(if using Centralizers for Artesian wells- indicate the spacing below)</i>	AMOUNT (cubic feet)	METHOD OF PLACEMENT	
	FROM	TO					

FOR OSE INTERNAL USE

WR-20 WELL RECORD & LOG (Version 09/22/2022)

FILE NO. <b>C-4712-POD 1</b>	POD NO. <b>1</b>	TRN NO. <b>743189</b>
LOCATION <b>Mon 23.32.31.141</b>	WELL TAG ID NO. <b>—</b>	PAGE 1 OF 2

Released to Imaging: 9/18/2024 10:50:04 AM



Mike A. Hamman, P.E.  
State Engineer



Roswell Office  
1900 WEST SECOND STREET  
ROSWELL, NM 88201

**STATE OF NEW MEXICO  
OFFICE OF THE STATE ENGINEER**

Trn Nbr: 743189  
File Nbr: C 04712  
Well File Nbr: C 04712 POD1

Apr. 04, 2023

VERTEX RESOURCES  
P.O. BOX 936  
ROSWELL, NM 88202

Greetings:

The above numbered permit was issued in your name on 02/21/2023.

The Well Record was received in this office on 04/04/2023, stating that it had been completed on 03/09/2023, and was a dry well. The well is to be plugged according to 19.27.4.30 NMAC.

Please note that another well can be drilled under this permit if the well is completed and the well log filed on or before 02/21/2024.

If you have any questions, please feel free to contact us.

Sincerely,

A handwritten signature in black ink, appearing to read "Maret Thompson".

Maret Thompson  
(575) 622-6521


drywell





# Right Meow 31 CTB 7

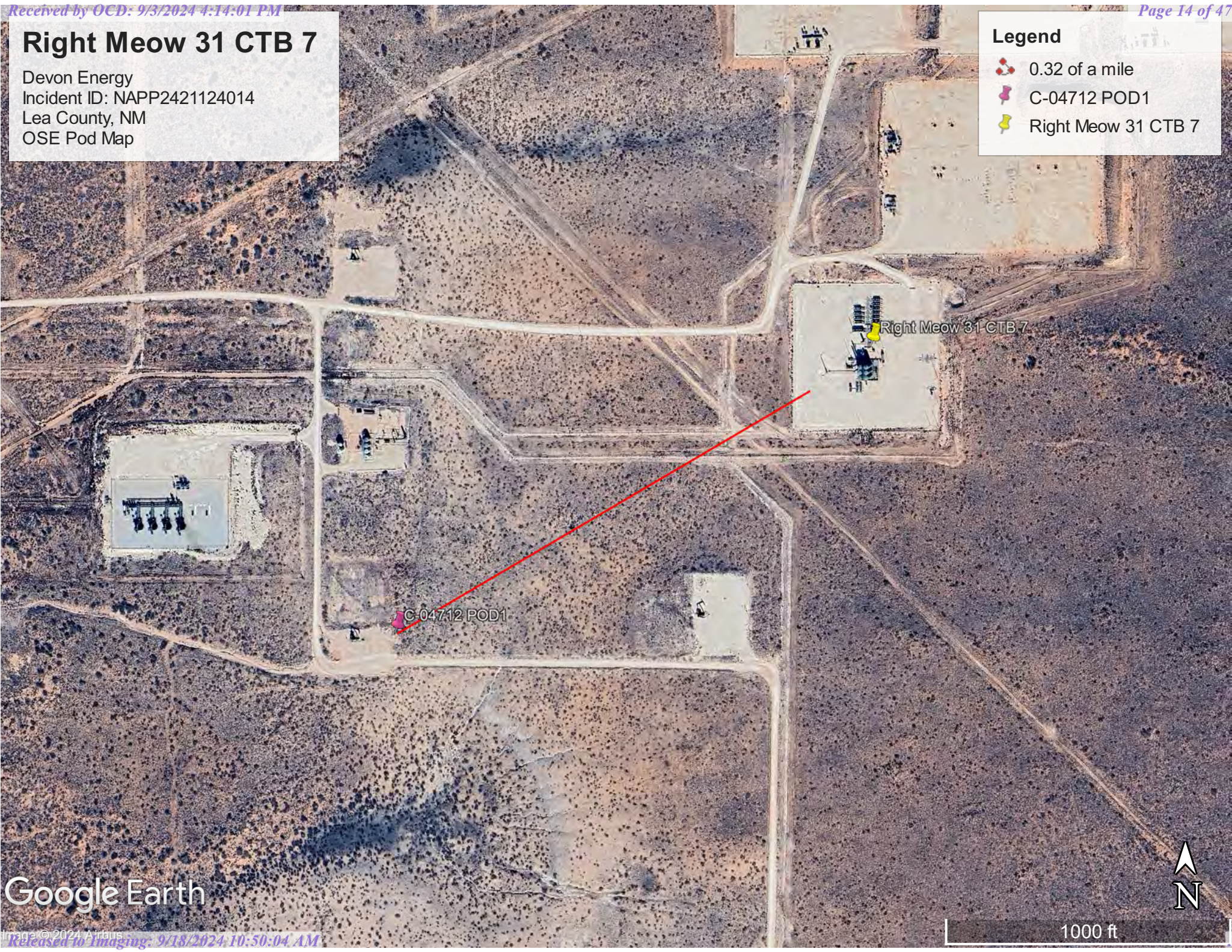
Devon Energy  
Incident ID: NAPP2421124014  
Lea County, NM  
OSE Pod Map

Legend

 0.32 of a mile

 C-04712 POD1

 Right Meow 31 CTB 7



Google Earth









[USGS Home](#)  
[Contact USGS](#)  
[Search USGS](#)

## National Water Information System: Web Interface

USGS Water Resources

Data Category:

Groundwater

Geographic Area:

United States

GO

Click to hide News Bulletins

- Explore the *NEW* [USGS National Water Dashboard](#) interactive map to access real-time water data from over 13,500 stations nationwide.

Groundwater levels for the Nation



Important: [Next Generation Monitoring Location Page](#)

### Search Results -- 1 sites found

site\_no list =

- 321609103445901

Minimum number of levels = 1

[Save file of selected sites](#) to local disk for future upload

### USGS 321609103445901 23S.31E.26.34411

Available data for this site

Groundwater: Field measurements



GO

Eddy County, New Mexico

Hydrologic Unit Code 13060011

Latitude 32°16'11.9", Longitude 103°45'01.2" NAD83

Land-surface elevation 3,451.00 feet above NGVD29

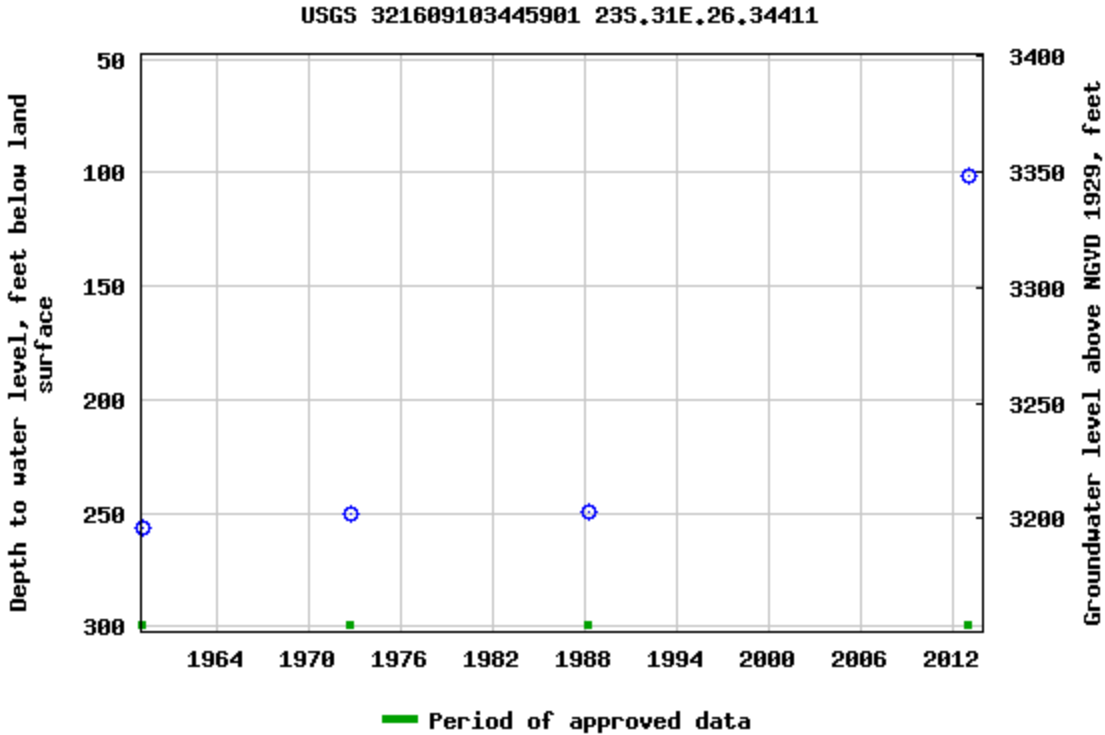
The depth of the well is 365 feet below land surface.

This well is completed in the Other aquifers (N9999OTHER) national aquifer.

This well is completed in the Dewey Lake Redbeds (312DYLK) local aquifer.

Output formats

<a href="#">Table of data</a>
<a href="#">Tab-separated data</a>
<a href="#">Graph of data</a>
<a href="#">Reselect period</a>



Breaks in the plot represent a gap of at least one year between field measurements.

[Download a presentation-quality graph](#)

[Questions or Comments](#)

[Help](#)

[Data Tips](#)

[Explanation of terms](#)

[Subscribe for system changes](#)



[U.S. Department of the Interior](#) | [U.S. Geological Survey](#)

**Title: Groundwater for USA: Water Levels**

**URL: <https://nwis.waterdata.usgs.gov/nwis/gwlevels?>**

Page Contact Information: [USGS Water Data Support Team](#)

Page Last Modified: 2024-08-27 15:48:34 EDT

0.64 0.48 nadww01



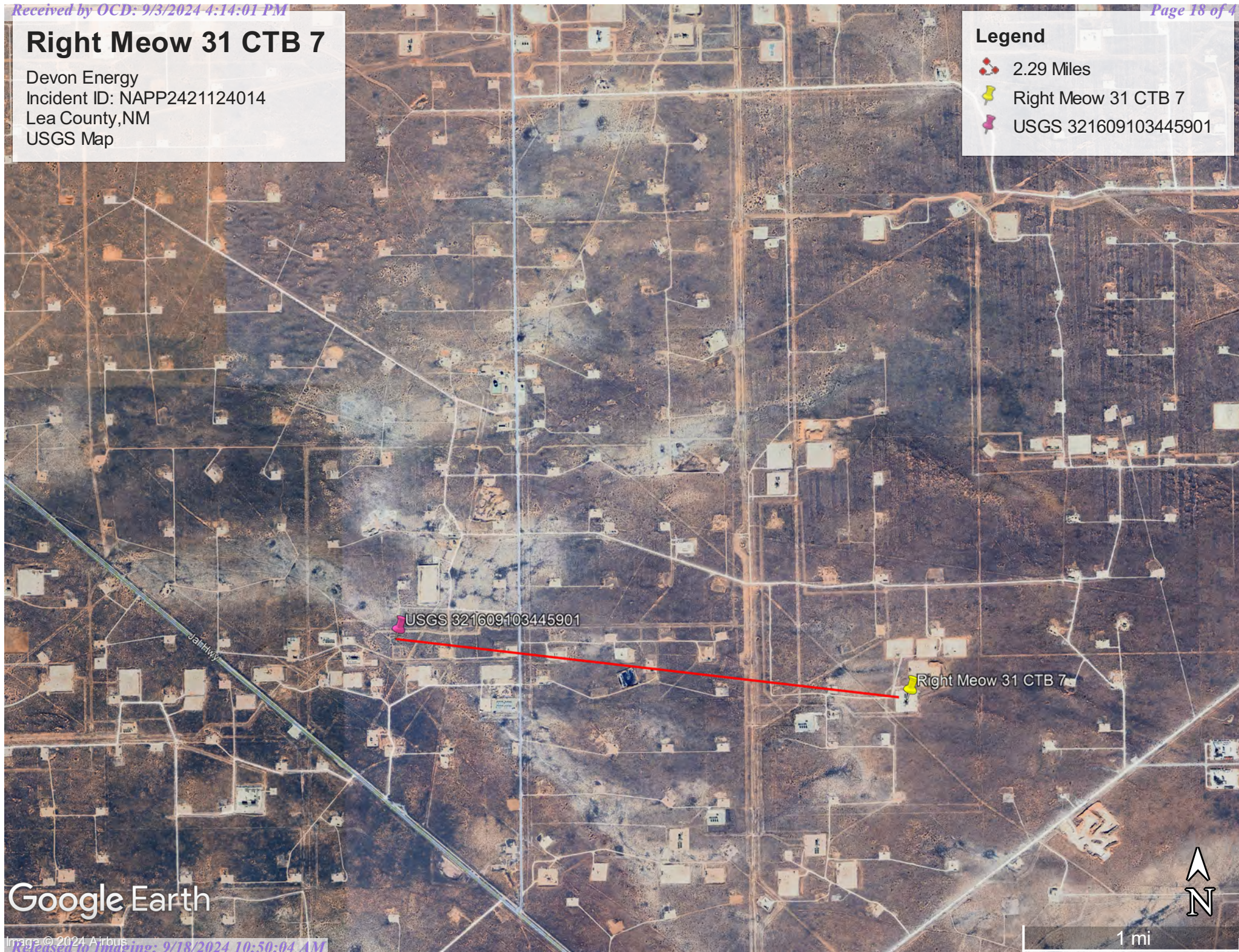


# Right Meow 31 CTB 7

Devon Energy  
Incident ID: NAPP2421124014  
Lea County, NM  
USGS Map

## Legend

- 2.29 Miles
- Right Meow 31 CTB 7
- USGS 321609103445901






Google Earth

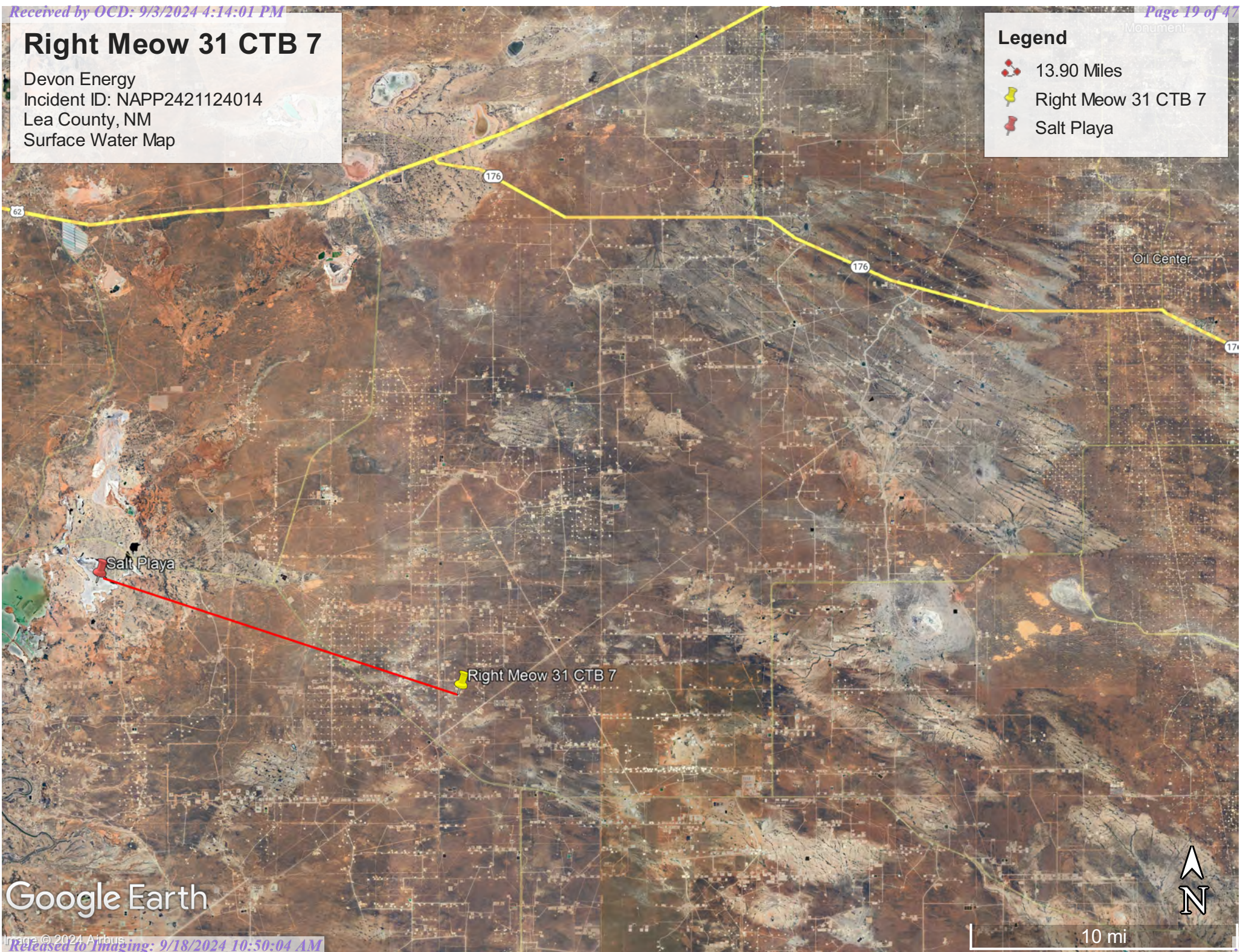


# Right Meow 31 CTB 7

Devon Energy  
Incident ID: NAPP2421124014  
Lea County, NM  
Surface Water Map

## Legend

-  13.90 Miles
-  Right Meow 31 CTB 7
-  Salt Playa



Google Earth



## Appendix B

- Soil Survey & Soil Maps
- Geological Data
- FEMA Flood Map
- Wetlands Map



Map Unit Description: Pyote and Maljamar fine sands---Lea County, New Mexico

---

## Lea County, New Mexico

### PU—Pyote and Maljamar fine sands

#### Map Unit Setting

*National map unit symbol:* dmqq

*Elevation:* 3,000 to 3,900 feet

*Mean annual precipitation:* 10 to 12 inches

*Mean annual air temperature:* 60 to 62 degrees F

*Frost-free period:* 190 to 205 days

*Farmland classification:* Not prime farmland

#### Map Unit Composition

*Pyote and similar soils:* 46 percent

*Maljamar and similar soils:* 44 percent

*Minor components:* 10 percent

*Estimates are based on observations, descriptions, and transects of the mapunit.*

#### Description of Pyote

##### Setting

*Landform:* Plains

*Landform position (three-dimensional):* Rise

*Down-slope shape:* Linear

*Across-slope shape:* Linear

*Parent material:* Sandy eolian deposits derived from sedimentary rock

##### Typical profile

*A - 0 to 30 inches:* fine sand

*Bt - 30 to 60 inches:* fine sandy loam

##### Properties and qualities

*Slope:* 0 to 3 percent

*Depth to restrictive feature:* More than 80 inches

*Drainage class:* Well drained

*Runoff class:* Negligible

*Capacity of the most limiting layer to transmit water (Ksat):* High  
(2.00 to 6.00 in/hr)

*Depth to water table:* More than 80 inches

*Frequency of flooding:* None

*Frequency of ponding:* None

*Calcium carbonate, maximum content:* 5 percent

*Gypsum, maximum content:* 1 percent

*Maximum salinity:* Nonsaline to very slightly saline (0.0 to 2.0 mmhos/cm)

*Sodium adsorption ratio, maximum:* 2.0

*Available water supply, 0 to 60 inches:* Low (about 5.1 inches)

##### Interpretive groups

*Land capability classification (irrigated):* 6e



Map Unit Description: Pyote and Maljamar fine sands---Lea County, New Mexico

---

*Land capability classification (nonirrigated): 7s*  
*Hydrologic Soil Group: A*  
*Ecological site: R070BD003NM - Loamy Sand*  
*Hydric soil rating: No*

### **Description of Maljamar**

#### **Setting**

*Landform: Plains*  
*Landform position (three-dimensional): Rise*  
*Down-slope shape: Linear*  
*Across-slope shape: Linear*  
*Parent material: Sandy eolian deposits derived from sedimentary rock*

#### **Typical profile**

*A - 0 to 24 inches: fine sand*  
*Bt - 24 to 50 inches: sandy clay loam*  
*Bkm - 50 to 60 inches: cemented material*

#### **Properties and qualities**

*Slope: 0 to 3 percent*  
*Depth to restrictive feature: 40 to 60 inches to petrocalcic*  
*Drainage class: Well drained*  
*Runoff class: Very low*  
*Capacity of the most limiting layer to transmit water (Ksat): Very low to moderately low (0.00 to 0.06 in/hr)*  
*Depth to water table: More than 80 inches*  
*Frequency of flooding: None*  
*Frequency of ponding: None*  
*Calcium carbonate, maximum content: 5 percent*  
*Gypsum, maximum content: 1 percent*  
*Maximum salinity: Nonsaline to very slightly saline (0.0 to 2.0 mmhos/cm)*  
*Sodium adsorption ratio, maximum: 2.0*  
*Available water supply, 0 to 60 inches: Low (about 5.6 inches)*

#### **Interpretive groups**

*Land capability classification (irrigated): 6e*  
*Land capability classification (nonirrigated): 7e*  
*Hydrologic Soil Group: B*  
*Ecological site: R070BD003NM - Loamy Sand*  
*Hydric soil rating: No*

### **Minor Components**

#### **Kermit**

*Percent of map unit: 10 percent*  
*Ecological site: R070BC022NM - Sandhills*



Map Unit Description: Pyote and Maljamar fine sands---Lea County, New Mexico

---

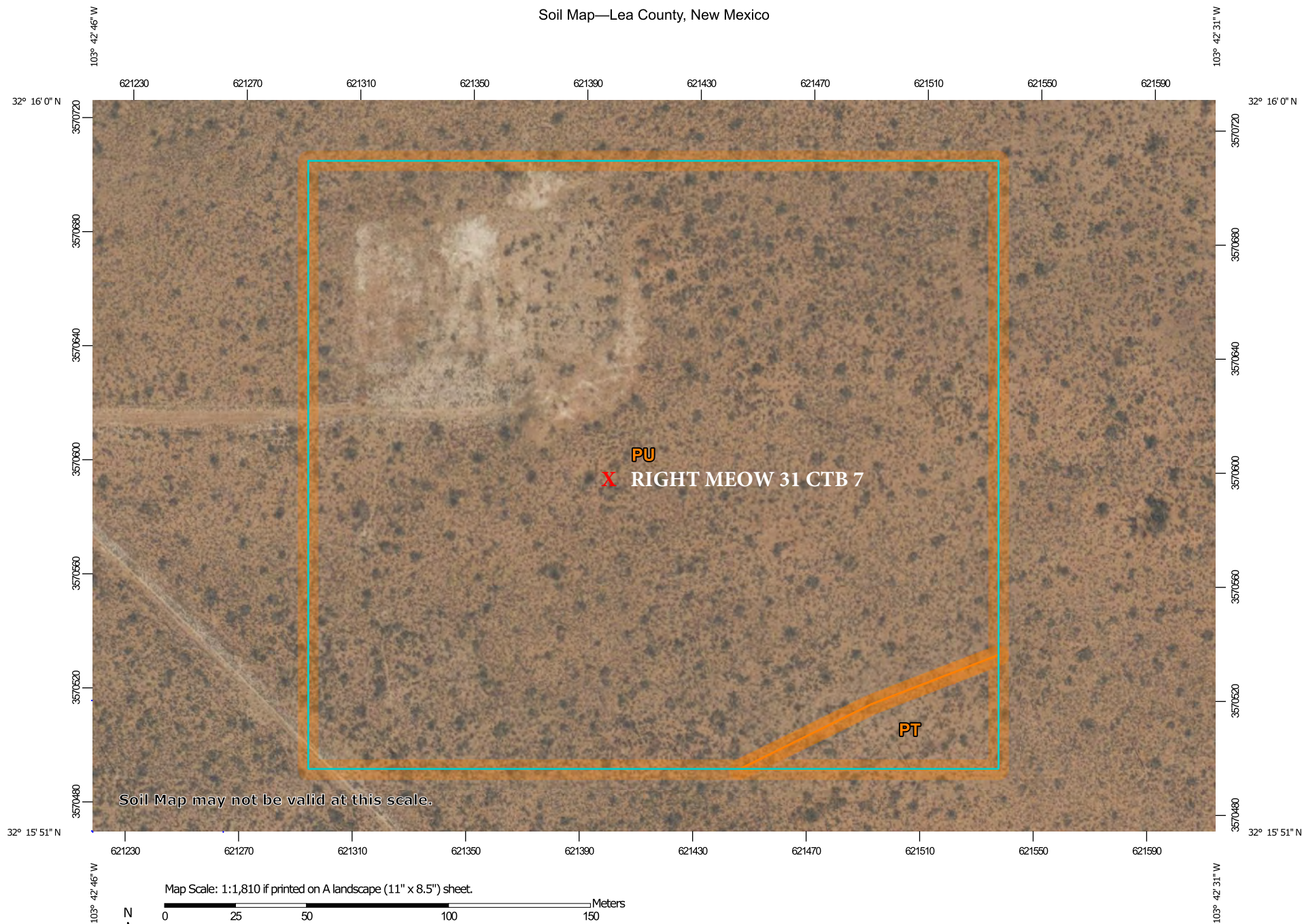
*Hydric soil rating:* No

## Data Source Information

Soil Survey Area: Lea County, New Mexico

Survey Area Data: Version 20, Sep 6, 2023

Soil Map—Lea County, New Mexico



Natural Resources  
Conservation Service


Web Soil Survey  
National Cooperative Soil Survey

8/27/2024  
Page 1 of 3



MAP LEGEND

Area of Interest (AOI)

 Area of Interest (AOI)

Soils

 Soil Map Unit Polygons

 Soil Map Unit Lines

 Soil Map Unit Points

Special Point Features



Blowout



Borrow Pit



Clay Spot



Closed Depression



Gravel Pit



Gravelly Spot



Landfill



Lava Flow



Marsh or swamp



Mine or Quarry



Miscellaneous Water



Perennial Water



Rock Outcrop



Saline Spot



Sandy Spot



Severely Eroded Spot



Sinkhole



Slide or Slip



Sodic Spot



Spoil Area



Stony Spot



Very Stony Spot



Wet Spot



Other



Special Line Features

Water Features



Streams and Canals

Transportation



Rails



Interstate Highways



US Routes



Major Roads



Local Roads

Background



Aerial Photography

MAP INFORMATION

The soil surveys that comprise your AOI were mapped at 1:20,000.

Warning: Soil Map may not be valid at this scale.

Enlargement of maps beyond the scale of mapping can cause misunderstanding of the detail of mapping and accuracy of soil line placement. The maps do not show the small areas of contrasting soils that could have been shown at a more detailed scale.

Please rely on the bar scale on each map sheet for map measurements.

Source of Map: Natural Resources Conservation Service  
Web Soil Survey URL:  
Coordinate System: Web Mercator (EPSG:3857)

Maps from the Web Soil Survey are based on the Web Mercator projection, which preserves direction and shape but distorts distance and area. A projection that preserves area, such as the Albers equal-area conic projection, should be used if more accurate calculations of distance or area are required.

This product is generated from the USDA-NRCS certified data as of the version date(s) listed below.

Soil Survey Area: Lea County, New Mexico  
Survey Area Data: Version 20, Sep 6, 2023

Soil map units are labeled (as space allows) for map scales 1:50,000 or larger.

Date(s) aerial images were photographed: Feb 7, 2020—May 12, 2020

The orthophoto or other base map on which the soil lines were compiled and digitized probably differs from the background imagery displayed on these maps. As a result, some minor shifting of map unit boundaries may be evident.

Map Unit Legend

Map Unit Symbol	Map Unit Name	Acres in AOI	Percent of AOI
PT	Pyote loamy fine sand	0.5	3.7%
PU	Pyote and Maljamar fine sands	12.4	96.3%
Totals for Area of Interest		12.9	100.0%



(<https://www.usgs.gov/>)

Mineral Resources (<https://www.usgs.gov/energy-and-minerals/mineral-resources-program>)  
/ Online Spatial Data (/) / Geology (/geology/) / by state (/geology/state/)  
/ New Mexico (/geology/state/state.php?state=NM)

## Eolian and piedmont deposits

XML (/geology/state/xml/NMQep;0)

JSON (/geology/state/json/NMQep;0)

Shapefile (/geology/state/unit-shape.php?unit=NMQep;0)

*Interlayered eolian sands and piedmont-slope deposits along the eastern flank of the Pecos River valley, primarily between Roswell and Carlsbad. Typically capped by thin eolian deposits.*

State	New Mexico (/geology/state/state.php?state=NM)		
Name	Eolian and piedmont deposits		
Geologic age	Holocene to middle Pleistocene		
Lithologic constituents	Major Unconsolidated (Eolian) Interlayered eolian sands and piedmont-slope deposits		
References	New Mexico Bureau of Geology and Mineral Resources, 2003, Geologic Map of New Mexico, scale 1:500,000 (includes some new polygons, faults, and attributes not in NM001 - heads up digitizing by JHorton).		
NGMDB product	NGMDB product page for 22974 ( <a href="https://ngmdb.usgs.gov/Prodesc/proddesc_22974.htm">https://ngmdb.usgs.gov/Prodesc/proddesc_22974.htm</a> )		

---

<b>Counties</b>	Chaves (/geology/state/fips-unit.php?code=f35005) - DeBaca (/geology/state/fips-unit.php?code=f35011) - Eddy (/geology/state/fips-unit.php?code=f35015) - Lea (/geology/state/fips-unit.php?code=f35025) - Roosevelt (/geology/state/fips-unit.php?code=f35041)
-----------------	---

---

[DOI Privacy Policy \(https://www.doi.gov/privacy\)](https://www.doi.gov/privacy) | [Legal \(https://www.usgs.gov/laws/policies\\_notices.html\)](https://www.usgs.gov/laws/policies_notices.html) | [Accessibility \(https://www2.usgs.gov/laws/accessibility.html\)](https://www2.usgs.gov/laws/accessibility.html) | [Site Map \(https://www.usgs.gov/sitemap.html\)](https://www.usgs.gov/sitemap.html) | [Contact USGS \(https://answers.usgs.gov/\)](https://answers.usgs.gov/)

---




[U.S. Department of the Interior \(https://www.doi.gov/\)](https://www.doi.gov/) | [DOI Inspector General \(https://www.doioig.gov/\)](https://www.doioig.gov/) | [White House \(https://www.whitehouse.gov/\)](https://www.whitehouse.gov/) | [E-gov \(https://www.whitehouse.gov/omb/management/egov/\)](https://www.whitehouse.gov/omb/management/egov/) | [No Fear Act \(https://www.doi.gov/pmb/eeo/no-fear-act\)](https://www.doi.gov/pmb/eeo/no-fear-act) | [FOIA \(https://www2.usgs.gov/foia\)](https://www2.usgs.gov/foia)

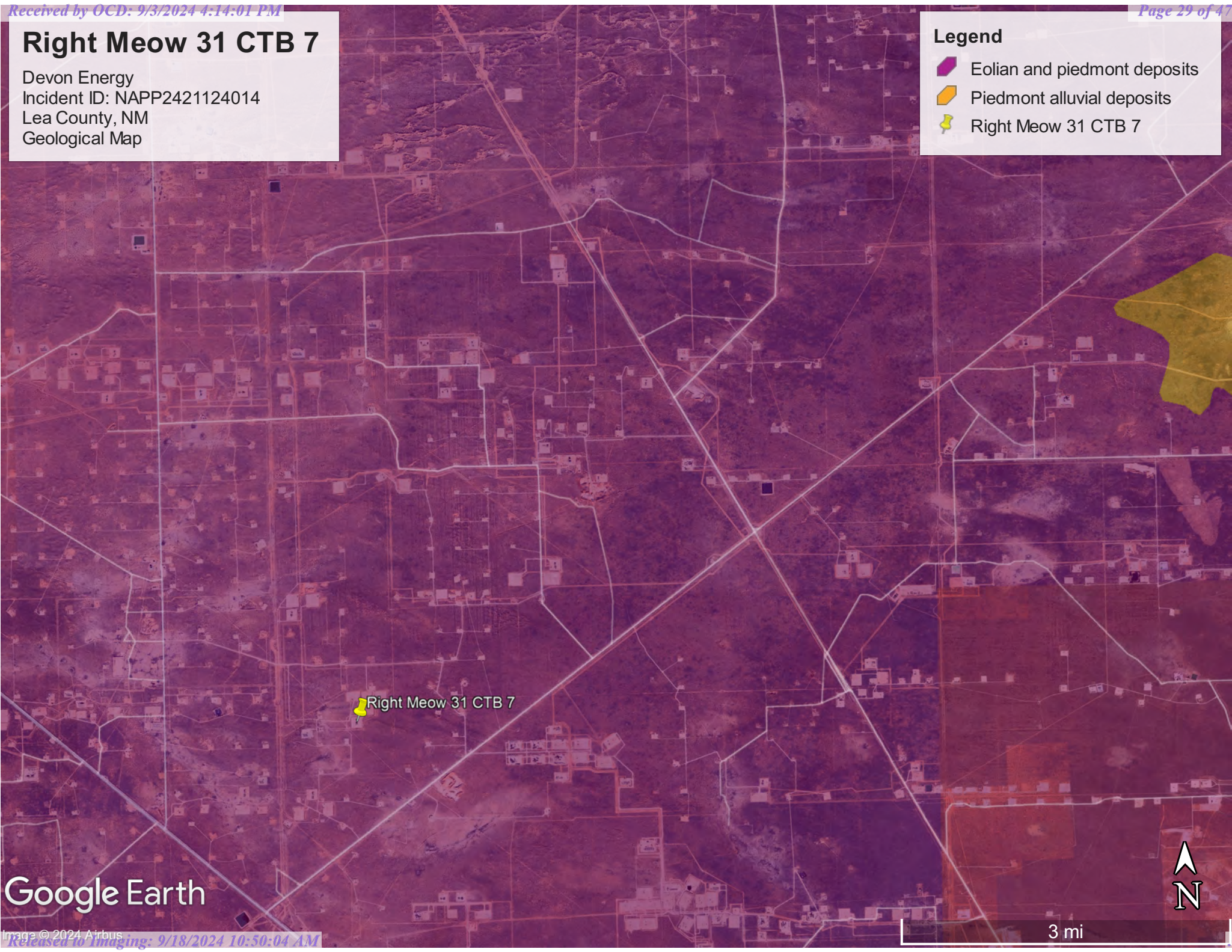


# Right Meow 31 CTB 7

Devon Energy  
Incident ID: NAPP2421124014  
Lea County, NM  
Geological Map

## Legend

-  Eolian and piedmont deposits
-  Piedmont alluvial deposits
-  Right Meow 31 CTB 7



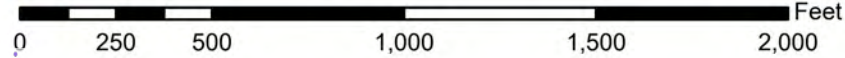
Google Earth



# National Flood Hazard Layer FIRMette



103°42'58"W 32°16'11"N



1:6,000

103°42'20"W 32°15'41"N

Basemap Imagery Source: USGS National Map 2023

### Legend

SEE FIS REPORT FOR DETAILED LEGEND AND INDEX MAP FOR FIRM PANEL LAYOUT

SPECIAL FLOOD HAZARD AREAS		Without Base Flood Elevation (BFE) Zone A, V, A99
		With BFE or Depth Zone AE, AO, AH, VE, AR
		Regulatory Floodway
OTHER AREAS OF FLOOD HAZARD		0.2% Annual Chance Flood Hazard, Areas of 1% annual chance flood with average depth less than one foot or with drainage areas of less than one square mile
		Future Conditions 1% Annual Chance Flood Hazard Zone X
		Area with Reduced Flood Risk due to Levee. See Notes. Zone X
		Area with Flood Risk due to Levee Zone X
OTHER AREAS		NO SCREEN Area of Minimal Flood Hazard Zone X
		Effective LOMRs
GENERAL STRUCTURES		Area of Undetermined Flood Hazard Zone D
		Channel, Culvert, or Storm Sewer
OTHER FEATURES		Levee, Dike, or Floodwall
		20.2 Cross Sections with 1% Annual Chance
		17.5 Water Surface Elevation
		Coastal Transect
		Base Flood Elevation Line (BFE)
		Limit of Study
		Jurisdiction Boundary
		Coastal Transect Baseline
		Profile Baseline
		Hydrographic Feature
MAP PANELS		Digital Data Available
		No Digital Data Available
		Unmapped

The pin displayed on the map is an approximate point selected by the user and does not represent an authoritative property location.

This map complies with FEMA's standards for the use of digital flood maps if it is not void as described below. The basemap shown complies with FEMA's basemap accuracy standards

The flood hazard information is derived directly from the authoritative NFHL web services provided by FEMA. This map was exported on 8/27/2024 at 3:56 PM and does not reflect changes or amendments subsequent to this date and time. The NFHL and effective information may change or become superseded by new data over time.

This map image is void if the one or more of the following map elements do not appear: basemap imagery, flood zone labels, legend, scale bar, map creation date, community identifiers, FIRM panel number, and FIRM effective date. Map images for unmapped and unmodernized areas cannot be used for regulatory purposes.

Received by OCD: 9/18/2024 4:14:01 PM

Page 30 of 47





August 27, 2024

Wetlands

- |  |   |  |
|--|---|--|
|  Estuarine and Marine Deepwater |  Freshwater Emergent Wetland       |  Lake     |
|  Estuarine and Marine Wetland   |  Freshwater Forested/Shrub Wetland |  Other    |
|  |  Freshwater Pond                   |  Riverine |

This map is for general reference only. The US Fish and Wildlife Service is not responsible for the accuracy or currentness of the base data shown on this map. All wetlands related data should be used in accordance with the layer metadata found on the Wetlands Mapper web site.

## Appendix C

- 48-Hour Notification
- Liner Inspection Form



**lynsey@pimaoil.com**

---

**From:** Woodall, Dale <Dale.Woodall@dvn.com>  
**Sent:** Tuesday, August 27, 2024 2:41 PM  
**To:** 'Gio PimaOil'; Lynsey Pima Oil  
**Subject:** FW: [EXTERNAL] The Oil Conservation Division (OCD) has accepted the application, Application ID: 378456

Dale Woodall  
**Environmental Professional**  
**Hobbs, NM**  
Office: 575-748-1838  
Mobile: 405-318-4697  
[Dale.Woodall@dvn.com](mailto:Dale.Woodall@dvn.com)

---

**From:** OCDOnline@state.nm.us <OCDOnline@state.nm.us>  
**Sent:** Tuesday, August 27, 2024 2:39 PM  
**To:** Woodall, Dale <Dale.Woodall@dvn.com>  
**Subject:** [EXTERNAL] The Oil Conservation Division (OCD) has accepted the application, Application ID: 378456

To whom it may concern (c/o Dale Woodall for DEVON ENERGY PRODUCTION COMPANY, LP),

The OCD has received the submitted *Notification for Liner Inspection for a Release* (C-141L), for incident ID (n#) nAPP2421124014.

The liner inspection is expected to take place:

**When:** 08/30/2024 @ 08:00

**Where:** B-31-23S-32E 348 FSL 439 FEL (32.265538,-103.710866)

**Additional Information:** Andrew Franco 806-200-0054

**Additional Instructions:** B-31-23S-32E, ( 32.265538,-103.710866 NAD83) From the intersection of NM 128 and Red Rd, travel north on Red Rd for 1.70 miles, turn west on Lease Rd for 1.17 miles, turn south on lease Rd for 0.50 of a mile, turn west on lease Rd for 0.57 of a mile, arriving to location.

An OCD representative may be available onsite at the date and time reported. In the absence or presence of an OCD representative, liner inspection pursuant to 19.15.29.11.A(5)(a) NMAC is required. Should there be a change in the scheduled date and time of the sampling event, then another notification should be resubmitted through OCD permitting as soon as possible.

- **Failure to notify the OCD of liner inspections including any changes in date/time per the requirements of 19.15.29.11.A(5)(a)(ii) NMAC, may result in the inspection not being accepted.**

If you have any questions regarding this application, or don't know why you have received this email, please contact us.

**New Mexico Energy, Minerals and Natural Resources Department**

1220 South St. Francis Drive

Santa Fe, NM 87505

Confidentiality Warning: This message and any attachments are intended only for the use of the intended recipient(s), are confidential, and may be privileged. If you are not the intended recipient, you are hereby notified that any review, retransmission, conversion to hard copy, copying, circulation or other use of all or any portion of this message and any attachments is strictly prohibited. If you are not the intended recipient, please notify the sender immediately by return e-mail, and delete this message and any attachments from your system.





Pima Environmental Services, LLC

**Liner Inspection Form**Company Name: Devon EnergySite: Right Meow 31 CTB 7Lat/Long: 32.265538, -103.710866

NMOCD Incident ID

& Incident Date: NAPP2421124014 7/27/2024

2-Day Notification

Sent: via Email by Dale Woodall on OCD portal 8/27/2024  
application ID: 378456.Inspection Date: 8/30/2024

Liner Type:      Earthen w/liner                      Earthen no liner                      Polystar

**Steel w/poly liner**                      Steel w/spray epoxy                      No Liner

Other: \_\_\_\_\_

Visualization	Yes	No	Comments
Is there a tear in the liner?		X	
Are there holes in the liner?		X	
Is the liner retaining any fluids?	X		Fluid from power washing the Liner
Does the liner have integrity to contain a leak?	X		

Comments: \_\_\_\_\_

Inspector Name: Andrew Franco      Inspector Signature: Andrew Franco

## Appendix D

### ○ Photographic Documentation





## PHOTOGRAPHIC DOCUMENTATION

SITE NAME: Right Meow 31 CTB 7

### Initial Liner Photos:



Site information Sign.



Aerial photo of liner taken prior to power washing.



Aerial photo of liner taken prior to power washing, taken facing North.

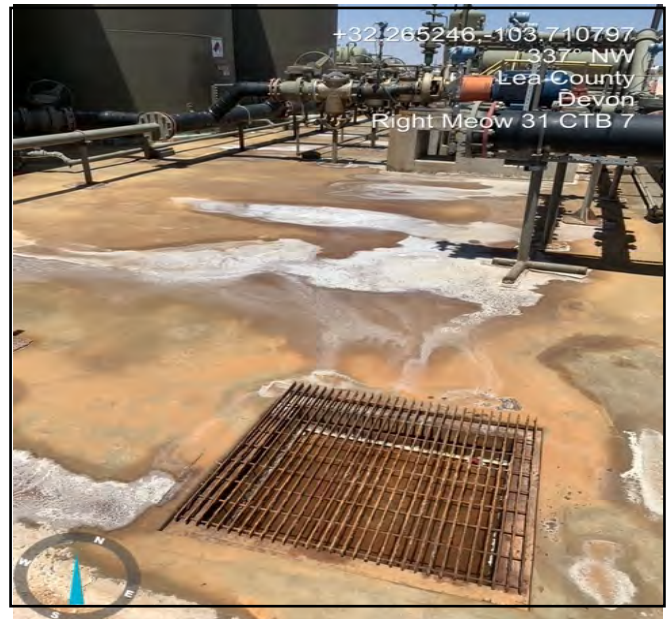


Photo of liner taken prior to power washing, taken facing Northwest.



Photo of liner taken prior to power washing, taken facing Southwest.





## PHOTOGRAPHIC DOCUMENTATION

SITE NAME: Right Meow 31 CTB 7

### Liner Inspection:



Photo taken pursuant to power washing, taken facing Northeast.



Photo taken pursuant to power washing, taken facing North.



Photo taken pursuant to power washing, taken facing Northwest.



Photo taken pursuant to power washing, taken facing West.





Photo taken pursuant to power washing, taken facing Northwest.



Photo taken pursuant to power washing, taken facing Southeast.



Photo taken pursuant to power washing, taken facing East.



Photo taken pursuant to power washing, taken facing South.



## PHOTOGRAPHIC DOCUMENTATION

SITE NAME: Right Meow 31 CTB 7

### Aerial Liner Photos:



Aerial photo of liner.



Aerial photo of liner.



Aerial photo of liner.



Aerial photo of liner.

**District I**  
1625 N. French Dr., Hobbs, NM 88240  
Phone:(575) 393-6161 Fax:(575) 393-0720  
**District II**  
811 S. First St., Artesia, NM 88210  
Phone:(575) 748-1283 Fax:(575) 748-9720  
**District III**  
1000 Rio Brazos Rd., Aztec, NM 87410  
Phone:(505) 334-6178 Fax:(505) 334-6170  
**District IV**  
1220 S. St Francis Dr., Santa Fe, NM 87505  
Phone:(505) 476-3470 Fax:(505) 476-3462

**State of New Mexico**  
**Energy, Minerals and Natural Resources**  
**Oil Conservation Division**  
**1220 S. St Francis Dr.**  
**Santa Fe, NM 87505**

QUESTIONS

Action 380282

QUESTIONS

Operator: DEVON ENERGY PRODUCTION COMPANY, LP 333 West Sheridan Ave. Oklahoma City, OK 73102	OGRID:	6137
	Action Number:	380282
	Action Type:	[C-141] Remediation Closure Request C-141 (C-141-v-Closure)

QUESTIONS

Prerequisites	
Incident ID (n#)	nAPP2421124014
Incident Name	NAPP2421124014 RIGHT MEOW 31 CTB 7 @ 0
Incident Type	Produced Water Release
Incident Status	Remediation Closure Report Received
Incident Facility	[fAPP2125751032] RIGHT MEOW 31 CTB 7

Location of Release Source	
Please answer all the questions in this group.	
Site Name	RIGHT MEOW 31 CTB 7
Date Release Discovered	07/27/2024
Surface Owner	Federal

Incident Details	
Please answer all the questions in this group.	
Incident Type	Produced Water Release
Did this release result in a fire or is the result of a fire	No
Did this release result in any injuries	No
Has this release reached or does it have a reasonable probability of reaching a watercourse	No
Has this release endangered or does it have a reasonable probability of endangering public health	No
Has this release substantially damaged or will it substantially damage property or the environment	No
Is this release of a volume that is or may with reasonable probability be detrimental to fresh water	No

Nature and Volume of Release	
Material(s) released, please answer all that apply below. Any calculations or specific justifications for the volumes provided should be attached to the follow-up C-141 submission.	
Crude Oil Released (bbls) Details	Not answered.
Produced Water Released (bbls) Details	Cause: Equipment Failure   Pump   Produced Water   Released: 52 BBL   Recovered: 47 BBL   Lost: 5 BBL.
Is the concentration of chloride in the produced water >10,000 mg/l	Yes
Condensate Released (bbls) Details	Not answered.
Natural Gas Vented (Mcf) Details	Not answered.
Natural Gas Flared (Mcf) Details	Not answered.
Other Released Details	Not answered.
Are there additional details for the questions above (i.e. any answer containing Other, Specify, Unknown, and/or Fire, or any negative lost amounts)	Pump failure caused a 52 bbl produced water release into lined containment. 47 bbls recovered. E-mail sent to the OCD on 7/27/2024



**District I**

1625 N. French Dr., Hobbs, NM 88240  
Phone:(575) 393-6161 Fax:(575) 393-0720

**District II**

811 S. First St., Artesia, NM 88210  
Phone:(575) 748-1283 Fax:(575) 748-9720

**District III**

1000 Rio Brazos Rd., Aztec, NM 87410  
Phone:(505) 334-6178 Fax:(505) 334-6170

**District IV**

1220 S. St Francis Dr., Santa Fe, NM 87505  
Phone:(505) 476-3470 Fax:(505) 476-3462

**State of New Mexico**  
**Energy, Minerals and Natural Resources**  
**Oil Conservation Division**  
**1220 S. St Francis Dr.**  
**Santa Fe, NM 87505**

QUESTIONS, Page 2

Action 380282

**QUESTIONS (continued)**

Operator: DEVON ENERGY PRODUCTION COMPANY, LP 333 West Sheridan Ave. Oklahoma City, OK 73102	OGRID:	6137
	Action Number:	380282
	Action Type:	[C-141] Remediation Closure Request C-141 (C-141-v-Closure)

**QUESTIONS**

<b>Nature and Volume of Release (continued)</b>	
Is this a gas only submission (i.e. only significant Mcf values reported)	No, according to supplied volumes this does not appear to be a "gas only" report.
Was this a major release as defined by Subsection A of 19.15.29.7 NMAC	Yes
Reasons why this would be considered a submission for a notification of a major release	From paragraph A. "Major release" determine using: (1) an unauthorized release of a volume, excluding gases, of 25 barrels or more.
With the implementation of the 19.15.27 NMAC (05/25/2021), venting and/or flaring of natural gas (i.e. gas only) are to be submitted on the C-129 form.	

**Initial Response**

The responsible party must undertake the following actions immediately unless they could create a safety hazard that would result in injury.

The source of the release has been stopped	True
The impacted area has been secured to protect human health and the environment	True
Released materials have been contained via the use of berms or dikes, absorbent pads, or other containment devices	True
All free liquids and recoverable materials have been removed and managed appropriately	True
If all the actions described above have not been undertaken, explain why	Not answered.

Per Paragraph (4) of Subsection B of 19.15.29.8 NMAC the responsible party may commence remediation immediately after discovery of a release. If remediation has begun, please prepare and attach a narrative of actions to date in the follow-up C-141 submission. If remedial efforts have been successfully completed or if the release occurred within a lined containment area (see Subparagraph (a) of Paragraph (5) of Subsection A of 19.15.29.11 NMAC), please prepare and attach all information needed for closure evaluation in the follow-up C-141 submission.

I hereby certify that the information given above is true and complete to the best of my knowledge and understand that pursuant to OCD rules and regulations all operators are required to report and/or file certain release notifications and perform corrective actions for releases which may endanger public health or the environment. The acceptance of a C-141 report by the OCD does not relieve the operator of liability should their operations have failed to adequately investigate and remediate contamination that pose a threat to groundwater, surface water, human health or the environment. In addition, OCD acceptance of a C-141 report does not relieve the operator of responsibility for compliance with any other federal, state, or local laws and/or regulations.

I hereby agree and sign off to the above statement	Name: Dale Woodall Title: EHS Professional Email: Dale.Woodall@dmv.com Date: 09/03/2024
--	--

**District I**

1625 N. French Dr., Hobbs, NM 88240  
Phone:(575) 393-6161 Fax:(575) 393-0720

**District II**

811 S. First St., Artesia, NM 88210  
Phone:(575) 748-1283 Fax:(575) 748-9720

**District III**

1000 Rio Brazos Rd., Aztec, NM 87410  
Phone:(505) 334-6178 Fax:(505) 334-6170

**District IV**

1220 S. St Francis Dr., Santa Fe, NM 87505  
Phone:(505) 476-3470 Fax:(505) 476-3462

**State of New Mexico**  
**Energy, Minerals and Natural Resources**  
**Oil Conservation Division**  
**1220 S. St Francis Dr.**  
**Santa Fe, NM 87505**

QUESTIONS, Page 3

Action 380282

**QUESTIONS (continued)**

Operator: DEVON ENERGY PRODUCTION COMPANY, LP 333 West Sheridan Ave. Oklahoma City, OK 73102	OGRID: 6137
	Action Number: 380282
	Action Type: [C-141] Remediation Closure Request C-141 (C-141-v-Closure)

**QUESTIONS****Site Characterization**

*Please answer all the questions in this group (only required when seeking remediation plan approval and beyond). This information must be provided to the appropriate district office no later than 90 days after the release discovery date.*

What is the shallowest depth to groundwater beneath the area affected by the release in feet below ground surface (ft bgs)	Between 51 and 75 (ft.)
What method was used to determine the depth to ground water	NM OSE iWaters Database Search
Did this release impact groundwater or surface water	No
<b>What is the minimum distance, between the closest lateral extents of the release and the following surface areas:</b>	
A continuously flowing watercourse or any other significant watercourse	Greater than 5 (mi.)
Any lakebed, sinkhole, or playa lake (measured from the ordinary high-water mark)	Greater than 5 (mi.)
An occupied permanent residence, school, hospital, institution, or church	Greater than 5 (mi.)
A spring or a private domestic fresh water well used by less than five households for domestic or stock watering purposes	Greater than 5 (mi.)
Any other fresh water well or spring	Greater than 5 (mi.)
Incorporated municipal boundaries or a defined municipal fresh water well field	Greater than 5 (mi.)
A wetland	Greater than 5 (mi.)
A subsurface mine	Greater than 5 (mi.)
An (non-karst) unstable area	Greater than 5 (mi.)
Categorize the risk of this well / site being in a karst geology	Low
A 100-year floodplain	Greater than 5 (mi.)
Did the release impact areas not on an exploration, development, production, or storage site	No

**Remediation Plan**

*Please answer all the questions that apply or are indicated. This information must be provided to the appropriate district office no later than 90 days after the release discovery date.*

Requesting a remediation plan approval with this submission	Yes
<i>Attach a comprehensive report demonstrating the lateral and vertical extents of soil contamination associated with the release have been determined, pursuant to 19.15.29.11 NMAC and 19.15.29.13 NMAC.</i>	
Have the lateral and vertical extents of contamination been fully delineated	Yes
Was this release entirely contained within a lined containment area	Yes
<i>Per Subsection B of 19.15.29.11 NMAC unless the site characterization report includes completed efforts at remediation, the report must include a proposed remediation plan in accordance with 19.15.29.12 NMAC, which includes the anticipated timelines for beginning and completing the remediation.</i>	
On what estimated date will the remediation commence	08/27/2024
On what date will (or did) the final sampling or liner inspection occur	08/30/2024
On what date will (or was) the remediation complete(d)	08/30/2024
What is the estimated surface area (in square feet) that will be remediated	0
What is the estimated volume (in cubic yards) that will be remediated	0
<i>These estimated dates and measurements are recognized to be the best guess or calculation at the time of submission and may (be) change(d) over time as more remediation efforts are completed.</i>	
<i>The OCD recognizes that proposed remediation measures may have to be minimally adjusted in accordance with the physical realities encountered during remediation. If the responsible party has any need to significantly deviate from the remediation plan proposed, then it should consult with the division to determine if another remediation plan submission is required.</i>	



**District I**

1625 N. French Dr., Hobbs, NM 88240  
Phone:(575) 393-6161 Fax:(575) 393-0720

**District II**

811 S. First St., Artesia, NM 88210  
Phone:(575) 748-1283 Fax:(575) 748-9720

**District III**

1000 Rio Brazos Rd., Aztec, NM 87410  
Phone:(505) 334-6178 Fax:(505) 334-6170

**District IV**

1220 S. St Francis Dr., Santa Fe, NM 87505  
Phone:(505) 476-3470 Fax:(505) 476-3462

**State of New Mexico**  
**Energy, Minerals and Natural Resources**  
**Oil Conservation Division**  
**1220 S. St Francis Dr.**  
**Santa Fe, NM 87505**

QUESTIONS, Page 4

Action 380282

**QUESTIONS (continued)**

Operator: DEVON ENERGY PRODUCTION COMPANY, LP 333 West Sheridan Ave. Oklahoma City, OK 73102	OGRID:	6137
	Action Number:	380282
	Action Type:	[C-141] Remediation Closure Request C-141 (C-141-v-Closure)

**QUESTIONS****Remediation Plan (continued)**

*Please answer all the questions that apply or are indicated. This information must be provided to the appropriate district office no later than 90 days after the release discovery date.*

**This remediation will (or is expected to) utilize the following processes to remediate / reduce contaminants:**

*(Select all answers below that apply.)*

Is (or was) there affected material present needing to be removed	Yes
Is (or was) there a power wash of the lined containment area (to be) performed	Yes
OTHER (Non-listed remedial process)	No

*Per Subsection B of 19.15.29.11 NMAC unless the site characterization report includes completed efforts at remediation, the report must include a proposed remediation plan in accordance with 19.15.29.12 NMAC, which includes the anticipated timelines for beginning and completing the remediation.*

I hereby certify that the information given above is true and complete to the best of my knowledge and understand that pursuant to OCD rules and regulations all operators are required to report and/or file certain release notifications and perform corrective actions for releases which may endanger public health or the environment. The acceptance of a C-141 report by the OCD does not relieve the operator of liability should their operations have failed to adequately investigate and remediate contamination that pose a threat to groundwater, surface water, human health or the environment. In addition, OCD acceptance of a C-141 report does not relieve the operator of responsibility for compliance with any other federal, state, or local laws and/or regulations.

I hereby agree and sign off to the above statement	Name: Dale Woodall Title: EHS Professional Email: Dale.Woodall@dmn.com Date: 09/03/2024
--	--

*The OCD recognizes that proposed remediation measures may have to be minimally adjusted in accordance with the physical realities encountered during remediation. If the responsible party has any need to significantly deviate from the remediation plan proposed, then it should consult with the division to determine if another remediation plan submission is required.*

**District I**

1625 N. French Dr., Hobbs, NM 88240  
Phone:(575) 393-6161 Fax:(575) 393-0720

**District II**

811 S. First St., Artesia, NM 88210  
Phone:(575) 748-1283 Fax:(575) 748-9720

**District III**

1000 Rio Brazos Rd., Aztec, NM 87410  
Phone:(505) 334-6178 Fax:(505) 334-6170

**District IV**

1220 S. St Francis Dr., Santa Fe, NM 87505  
Phone:(505) 476-3470 Fax:(505) 476-3462

**State of New Mexico**  
**Energy, Minerals and Natural Resources**  
**Oil Conservation Division**  
**1220 S. St Francis Dr.**  
**Santa Fe, NM 87505**

QUESTIONS, Page 6

Action 380282

**QUESTIONS (continued)**

Operator: DEVON ENERGY PRODUCTION COMPANY, LP 333 West Sheridan Ave. Oklahoma City, OK 73102	OGRID:	6137
	Action Number:	380282
	Action Type:	[C-141] Remediation Closure Request C-141 (C-141-v-Closure)

**QUESTIONS**

Liner Inspection Information	
Last liner inspection notification (C-141L) recorded	378456
Liner inspection date pursuant to Subparagraph (a) of Paragraph (5) of Subsection A of 19.15.29.11 NMAC	08/30/2024
Was all the impacted materials removed from the liner	Yes
What was the liner inspection surface area in square feet	4855

**Remediation Closure Request**

*Only answer the questions in this group if seeking remediation closure for this release because all remediation steps have been completed.*

Requesting a remediation closure approval with this submission	Yes
Have the lateral and vertical extents of contamination been fully delineated	Yes
Was this release entirely contained within a lined containment area	Yes
What was the total surface area (in square feet) remediated	0
What was the total volume (cubic yards) remediated	0
Summarize any additional remediation activities not included by answers (above)	see report

*The responsible party must attach information demonstrating they have complied with all applicable closure requirements and any conditions or directives of the OCD. This demonstration should be in the form of a comprehensive report (in .pdf format) including a scaled site map, sampling diagrams, relevant field notes, photographs of any excavation prior to backfilling, laboratory data including chain of custody documents of final sampling, and a narrative of the remedial activities. Refer to 19.15.29.12 NMAC.*

I hereby certify that the information given above is true and complete to the best of my knowledge and understand that pursuant to OCD rules and regulations all operators are required to report and/or file certain release notifications and perform corrective actions for releases which may endanger public health or the environment. The acceptance of a C-141 report by the OCD does not relieve the operator of liability should their operations have failed to adequately investigate and remediate contamination that pose a threat to groundwater, surface water, human health or the environment. In addition, OCD acceptance of a C-141 report does not relieve the operator of responsibility for compliance with any other federal, state, or local laws and/or regulations. The responsible party acknowledges they must substantially restore, reclaim, and re-vegetate the impacted surface area to the conditions that existed prior to the release or their final land use in accordance with 19.15.29.13 NMAC including notification to the OCD when reclamation and re-vegetation are complete.

I hereby agree and sign off to the above statement	Name: Dale Woodall Title: EHS Professional Email: Dale.Woodall@dmn.com Date: 09/03/2024
--	--



**District I**  
1625 N. French Dr., Hobbs, NM 88240  
Phone:(575) 393-6161 Fax:(575) 393-0720  
**District II**  
811 S. First St., Artesia, NM 88210  
Phone:(575) 748-1283 Fax:(575) 748-9720  
**District III**  
1000 Rio Brazos Rd., Aztec, NM 87410  
Phone:(505) 334-6178 Fax:(505) 334-6170  
**District IV**  
1220 S. St Francis Dr., Santa Fe, NM 87505  
Phone:(505) 476-3470 Fax:(505) 476-3462

**State of New Mexico**  
**Energy, Minerals and Natural Resources**  
**Oil Conservation Division**  
**1220 S. St Francis Dr.**  
**Santa Fe, NM 87505**

CONDITIONS  
  
Action 380282

CONDITIONS

Operator: DEVON ENERGY PRODUCTION COMPANY, LP 333 West Sheridan Ave. Oklahoma City, OK 73102	OGRID: 6137
	Action Number: 380282
	Action Type: [C-141] Remediation Closure Request C-141 (C-141-v-Closure)

CONDITIONS

Created By	Condition	Condition Date
scwells	None	9/18/2024