

**District I**  
1625 N. French Dr., Hobbs, NM 88240  
Phone:(575) 393-6161 Fax:(575) 393-0720  
**District II**  
811 S. First St., Artesia, NM 88210  
Phone:(575) 748-1283 Fax:(575) 748-9720  
**District III**  
1000 Rio Brazos Rd., Aztec, NM 87410  
Phone:(505) 334-6178 Fax:(505) 334-6170  
**District IV**  
1220 S. St Francis Dr., Santa Fe, NM 87505  
Phone:(505) 476-3470 Fax:(505) 476-3462

State of New Mexico  
Energy, Minerals and Natural Resources  
Oil Conservation Division  
1220 S. St Francis Dr.  
Santa Fe, NM 87505

QUESTIONS  
  
Action 373622

QUESTIONS

|   |  |
|---|--|
| Operator:<br>CIMAREX ENERGY CO.<br>6001 Deauville Blvd<br>Midland, TX 79706 | OGRID:<br>215099                                       |
|   | Action Number:<br>373622                               |
|   | Action Type:<br>[NOTIFY] Notification Of Release (NOR) |

QUESTIONS

|  |                            |
|--|----------------------------|
| Location of Release Source                     |                            |
| Please answer all the questions in this group. |                            |
| Site Name                                      | Triste Draw 36 State 6 CTB |
| Date Release Discovered                        | 08/13/2024                 |
| Surface Owner                                  | State                      |

|  |                        |
|--|------------------------|
| Incident Details   |                        |
| Please answer all the questions in this group.   |                        |
| Incident Type  | Produced Water Release |
| Did this release result in a fire or is the result of a fire   | No                     |
| Did this release result in any injuries  | No                     |
| Has this release reached or does it have a reasonable probability of reaching a watercourse          | No                     |
| Has this release endangered or does it have a reasonable probability of endangering public health    | No                     |
| Has this release substantially damaged or will it substantially damage property or the environment   | No                     |
| Is this release of a volume that is or may with reasonable probability be detrimental to fresh water | No                     |

|  |   |
|--|---|
| Nature and Volume of Release   |   |
| Material(s) released, please answer all that apply below. Any calculations or specific justifications for the volumes provided should be attached to the follow-up C-141 submission. |   |
| Crude Oil Released (bbls) Details  | Not answered.   |
| Produced Water Released (bbls) Details   | Cause: Equipment Failure   Separator   Produced Water   Released: 9 BBL   Recovered: 9 BBL   Lost: 0 BBL.   |
| Is the concentration of chloride in the produced water >10,000 mg/l  | Yes   |
| Condensate Released (bbls) Details   | Not answered.   |
| Natural Gas Vented (Mcf) Details   | Not answered.   |
| Natural Gas Flared (Mcf) Details   | Not answered.   |
| Other Released Details   | Not answered.   |
| Are there additional details for the questions above (i.e. any answer containing Other, Specify, Unknown, and/or Fire, or any negative lost amounts)                                 | The 90 below dump valve on the heater treater washed out and released 9 barrels produced water into the lined containment. A vac truck was able to recover all fluids. The containment is scheduled to be washed. |

**District I**  
1625 N. French Dr., Hobbs, NM 88240  
Phone:(575) 393-6161 Fax:(575) 393-0720  
**District II**  
811 S. First St., Artesia, NM 88210  
Phone:(575) 748-1283 Fax:(575) 748-9720  
**District III**  
1000 Rio Brazos Rd., Aztec, NM 87410  
Phone:(505) 334-6178 Fax:(505) 334-6170  
**District IV**  
1220 S. St Francis Dr., Santa Fe, NM 87505  
Phone:(505) 476-3470 Fax:(505) 476-3462

State of New Mexico  
Energy, Minerals and Natural Resources  
Oil Conservation Division  
1220 S. St Francis Dr.  
Santa Fe, NM 87505

QUESTIONS, Page 2  
  
Action 373622

QUESTIONS (continued)

|   |  |
|---|--|
| Operator:<br>CIMAREX ENERGY CO.<br>6001 Deauville Blvd<br>Midland, TX 79706 | OGRID:<br>215099                                       |
|   | Action Number:<br>373622                               |
|   | Action Type:<br>[NOTIFY] Notification Of Release (NOR) |

QUESTIONS

| Nature and Volume of Release (continued)  |   |
|---|---|
| Is this a gas only submission (i.e. only significant Mcf values reported)   | No, according to supplied volumes this does not appear to be a "gas only" report. |
| Was this a major release as defined by Subsection A of 19.15.29.7 NMAC  | No  |
| Reasons why this would be considered a submission for a notification of a major release   | Unavailable.  |
| With the implementation of the 19.15.27 NMAC (05/25/2021), venting and/or flaring of natural gas (i.e. gas only) are to be submitted on the C-129 form. |   |

| Initial Response  |               |
|---|---------------|
| The responsible party must undertake the following actions immediately unless they could create a safety hazard that would result in injury.  |               |
| The source of the release has been stopped  | True          |
| The impacted area has been secured to protect human health and the environment  | True          |
| Released materials have been contained via the use of berms or dikes, absorbent pads, or other containment devices  | True          |
| All free liquids and recoverable materials have been removed and managed appropriately  | True          |
| If all the actions described above have not been undertaken, explain why  | Not answered. |
| Per Paragraph 4 of Subsection B of 19.15.29.8 NMAC the responsible party may commence remediation immediately after discovery of a release. If remediation has begun, please prepare and attach a narrative of actions to date in the follow-up C-141 submission. If remedial efforts have been successfully completed or if the release occurred within a lined containment area (see 19.15.29.11(A)(5)(a) NMAC), please prepare and attach all information needed for closure evaluation in the follow-up C-141 submission. |               |

**District I**  
1625 N. French Dr., Hobbs, NM 88240  
Phone:(575) 393-6161 Fax:(575) 393-0720  
**District II**  
811 S. First St., Artesia, NM 88210  
Phone:(575) 748-1283 Fax:(575) 748-9720  
**District III**  
1000 Rio Brazos Rd., Aztec, NM 87410  
Phone:(505) 334-6178 Fax:(505) 334-6170  
**District IV**  
1220 S. St Francis Dr., Santa Fe, NM 87505  
Phone:(505) 476-3470 Fax:(505) 476-3462

**State of New Mexico**  
**Energy, Minerals and Natural Resources**  
**Oil Conservation Division**  
**1220 S. St Francis Dr.**  
**Santa Fe, NM 87505**

ACKNOWLEDGMENTS  
  
Action 373622

ACKNOWLEDGMENTS

|   |  |
|---|--|
| Operator:<br>CIMAREX ENERGY CO.<br>6001 Deauville Blvd<br>Midland, TX 79706 | OGRID:<br>215099                                       |
|   | Action Number:<br>373622                               |
|   | Action Type:<br>[NOTIFY] Notification Of Release (NOR) |

ACKNOWLEDGMENTS

|                                     |  |
|-------------------------------------|--|
| <input checked="" type="checkbox"/> | I acknowledge that I am authorized to submit notification of a release on behalf of my operator.   |
| <input checked="" type="checkbox"/> | I acknowledge that upon submitting this application, I will be creating a new incident file (assigned to my operator) to track the notification(s) and corrective action(s) for a release, pursuant to NMAC 19.15.29.  |
| <input checked="" type="checkbox"/> | I acknowledge that creating a new incident file will require my operator to file subsequent submission(s) of form "C-141, Application for administrative approval of a release notification and corrective action", pursuant to NMAC 19.15.29.   |
| <input checked="" type="checkbox"/> | I hereby certify that the information given above is true and complete to the best of my knowledge and understand that pursuant to OCD rules and regulations all operators are required to report and/or file certain release notifications and perform corrective actions for releases which may endanger public health or the environment. |
| <input checked="" type="checkbox"/> | I acknowledge the fact that the acceptance of a C-141 report by the OCD does not relieve the operator of liability should their operations have failed to adequately investigate and remediate contamination that pose a threat to groundwater, surface water, human health or the environment.  |
| <input checked="" type="checkbox"/> | I acknowledge the fact that, in addition, OCD acceptance of a C-141 report does not relieve the operator of responsibility for compliance with any other federal, state, or local laws and/or regulations.   |

**District I**  
1625 N. French Dr., Hobbs, NM 88240  
Phone:(575) 393-6161 Fax:(575) 393-0720  
**District II**  
811 S. First St., Artesia, NM 88210  
Phone:(575) 748-1283 Fax:(575) 748-9720  
**District III**  
1000 Rio Brazos Rd., Aztec, NM 87410  
Phone:(505) 334-6178 Fax:(505) 334-6170  
**District IV**  
1220 S. St Francis Dr., Santa Fe, NM 87505  
Phone:(505) 476-3470 Fax:(505) 476-3462

**State of New Mexico**  
**Energy, Minerals and Natural Resources**  
**Oil Conservation Division**  
**1220 S. St Francis Dr.**  
**Santa Fe, NM 87505**

CONDITIONS  
  
Action 373622

CONDITIONS

|   |  |
|---|--|
| Operator:<br>CIMAREX ENERGY CO.<br>6001 Deauville Blvd<br>Midland, TX 79706 | OGRID:<br>215099                                       |
|   | Action Number:<br>373622                               |
|   | Action Type:<br>[NOTIFY] Notification Of Release (NOR) |

CONDITIONS

|            |   |                |
|------------|---|----------------|
| Created By | Condition   | Condition Date |
| lluig      | When submitting future reports regarding this release, please submit the calculations used or specific justification for the volumes reported on the initial C-141. | 8/14/2024      |



[< Back](#)

### Square/Rectangle Contained Spill with Vessel Displacement

L(Ft)

W(Ft)

D(In)

Oil %

Tank Size (Ft)

Tank Count



|                        |        |
|------------------------|--------|
| H2O Spill Before Disp: | 9.08   |
| Tank Displacement Vol: | 0.00   |
| Oil Spill Total:       | 0.00   |
| H2O Spill Total:       | 9.08   |
| Total Bbls Spilled:    | 9.08   |
| Total Gals Spilled:    | 381.48 |

Screenshot for future reference!



CIMAREX ENERGY  
TRES EQUIS STATE 2H – 6H CTB  
LEA, NM



**District I**  
1625 N. French Dr., Hobbs, NM 88240  
Phone:(575) 393-6161 Fax:(575) 393-0720  
**District II**  
811 S. First St., Artesia, NM 88210  
Phone:(575) 748-1283 Fax:(575) 748-9720  
**District III**  
1000 Rio Brazos Rd., Aztec, NM 87410  
Phone:(505) 334-6178 Fax:(505) 334-6170  
**District IV**  
1220 S. St Francis Dr., Santa Fe, NM 87505  
Phone:(505) 476-3470 Fax:(505) 476-3462

State of New Mexico  
Energy, Minerals and Natural Resources  
Oil Conservation Division  
1220 S. St Francis Dr.  
Santa Fe, NM 87505

QUESTIONS

Action 375769

QUESTIONS

|   |   |
|---|---|
| Operator:<br>CIMAREX ENERGY CO.<br>6001 Deauville Blvd<br>Midland, TX 79706 | OGRID:<br>215099  |
|   | Action Number:<br>375769                                |
|   | Action Type:<br>[C-141] Initial C-141 (C-141-v-Initial) |

QUESTIONS

|                   |   |
|-------------------|---|
| Prerequisites     |   |
| Incident ID (n#)  | nAPP2422727571                                |
| Incident Name     | NAPP2422727571 TRES EQUIS STATE 2H-6H CTB @ 0 |
| Incident Type     | Produced Water Release                        |
| Incident Status   | Initial C-141 Received                        |
| Incident Facility | [fAPP2202685531] TRES EQUIS STATE 2H-6H       |

|  |                            |
|--|----------------------------|
| Location of Release Source                     |                            |
| Please answer all the questions in this group. |                            |
| Site Name                                      | TRES EQUIS STATE 2H-6H CTB |
| Date Release Discovered                        | 08/13/2024                 |
| Surface Owner                                  | State                      |

|  |                        |
|--|------------------------|
| Incident Details   |                        |
| Please answer all the questions in this group.   |                        |
| Incident Type  | Produced Water Release |
| Did this release result in a fire or is the result of a fire   | No                     |
| Did this release result in any injuries  | No                     |
| Has this release reached or does it have a reasonable probability of reaching a watercourse          | No                     |
| Has this release endangered or does it have a reasonable probability of endangering public health    | No                     |
| Has this release substantially damaged or will it substantially damage property or the environment   | No                     |
| Is this release of a volume that is or may with reasonable probability be detrimental to fresh water | No                     |

|  |   |
|--|---|
| Nature and Volume of Release   |   |
| Material(s) released, please answer all that apply below. Any calculations or specific justifications for the volumes provided should be attached to the follow-up C-141 submission. |   |
| Crude Oil Released (bbls) Details  | Not answered.   |
| Produced Water Released (bbls) Details   | Cause: Equipment Failure   Separator   Produced Water   Released: 9 BBL   Recovered: 9 BBL   Lost: 0 BBL.   |
| Is the concentration of chloride in the produced water >10,000 mg/l  | Yes   |
| Condensate Released (bbls) Details   | Not answered.   |
| Natural Gas Vented (Mcf) Details   | Not answered.   |
| Natural Gas Flared (Mcf) Details   | Not answered.   |
| Other Released Details   | Not answered.   |
| Are there additional details for the questions above (i.e. any answer containing Other, Specify, Unknown, and/or Fire, or any negative lost amounts)                                 | The 90 below dump valve on the heater treater washed out and released 9 barrels produced water into the lined containment. A vac truck was able to recover all fluids. The containment is scheduled to be washed. |

**District I**

1625 N. French Dr., Hobbs, NM 88240  
Phone:(575) 393-6161 Fax:(575) 393-0720

**District II**

811 S. First St., Artesia, NM 88210  
Phone:(575) 748-1283 Fax:(575) 748-9720

**District III**

1000 Rio Brazos Rd., Aztec, NM 87410  
Phone:(505) 334-6178 Fax:(505) 334-6170

**District IV**

1220 S. St Francis Dr., Santa Fe, NM 87505  
Phone:(505) 476-3470 Fax:(505) 476-3462

**State of New Mexico**  
**Energy, Minerals and Natural Resources**  
**Oil Conservation Division**  
**1220 S. St Francis Dr.**  
**Santa Fe, NM 87505**

QUESTIONS, Page 2

Action 375769

**QUESTIONS (continued)**

|   |   |
|---|---|
| Operator:<br>CIMAREX ENERGY CO.<br>6001 Deauville Blvd<br>Midland, TX 79706 | OGRID:<br>215099  |
|   | Action Number:<br>375769                                |
|   | Action Type:<br>[C-141] Initial C-141 (C-141-v-Initial) |

**QUESTIONS**

| Nature and Volume of Release (continued)  |   |
|---|---|
| Is this a gas only submission (i.e. only significant Mcf values reported)   | No, according to supplied volumes this does not appear to be a "gas only" report. |
| Was this a major release as defined by Subsection A of 19.15.29.7 NMAC  | No  |
| Reasons why this would be considered a submission for a notification of a major release   | Unavailable.  |
| With the implementation of the 19.15.27 NMAC (05/25/2021), venting and/or flaring of natural gas (i.e. gas only) are to be submitted on the C-129 form. |   |

**Initial Response**

The responsible party must undertake the following actions immediately unless they could create a safety hazard that would result in injury.

|  |               |
|--|---------------|
| The source of the release has been stopped   | True          |
| The impacted area has been secured to protect human health and the environment                                     | True          |
| Released materials have been contained via the use of berms or dikes, absorbent pads, or other containment devices | True          |
| All free liquids and recoverable materials have been removed and managed appropriately                             | True          |
| If all the actions described above have not been undertaken, explain why   | Not answered. |

Per Paragraph (4) of Subsection B of 19.15.29.8 NMAC the responsible party may commence remediation immediately after discovery of a release. If remediation has begun, please prepare and attach a narrative of actions to date in the follow-up C-141 submission. If remedial efforts have been successfully completed or if the release occurred within a lined containment area (see Subparagraph (a) of Paragraph (5) of Subsection A of 19.15.29.11 NMAC), please prepare and attach all information needed for closure evaluation in the follow-up C-141 submission.

I hereby certify that the information given above is true and complete to the best of my knowledge and understand that pursuant to OCD rules and regulations all operators are required to report and/or file certain release notifications and perform corrective actions for releases which may endanger public health or the environment. The acceptance of a C-141 report by the OCD does not relieve the operator of liability should their operations have failed to adequately investigate and remediate contamination that pose a threat to groundwater, surface water, human health or the environment. In addition, OCD acceptance of a C-141 report does not relieve the operator of responsibility for compliance with any other federal, state, or local laws and/or regulations.

|  |   |
|--|---|
| I hereby agree and sign off to the above statement | Name: Laci Luig<br>Title: ES&H Specialist<br>Email: DL_PermianEnvironmental@coterra.com<br>Date: 08/20/2024 |
|--|---|



**District I**  
1625 N. French Dr., Hobbs, NM 88240  
Phone:(575) 393-6161 Fax:(575) 393-0720  
**District II**  
811 S. First St., Artesia, NM 88210  
Phone:(575) 748-1283 Fax:(575) 748-9720  
**District III**  
1000 Rio Brazos Rd., Aztec, NM 87410  
Phone:(505) 334-6178 Fax:(505) 334-6170  
**District IV**  
1220 S. St Francis Dr., Santa Fe, NM 87505  
Phone:(505) 476-3470 Fax:(505) 476-3462

State of New Mexico  
Energy, Minerals and Natural Resources  
Oil Conservation Division  
1220 S. St Francis Dr.  
Santa Fe, NM 87505

QUESTIONS, Page 3  
  
Action 375769

QUESTIONS (continued)

|   |   |
|---|---|
| Operator:<br>CIMAREX ENERGY CO.<br>6001 Deauville Blvd<br>Midland, TX 79706 | OGRID:<br>215099  |
|   | Action Number:<br>375769                                |
|   | Action Type:<br>[C-141] Initial C-141 (C-141-v-Initial) |

QUESTIONS

|  |               |
|--|---------------|
| <b>Site Characterization</b><br><i>Please answer all the questions in this group (only required when seeking remediation plan approval and beyond). This information must be provided to the appropriate district office no later than 90 days after the release discovery date.</i> |               |
| What is the shallowest depth to groundwater beneath the area affected by the release in feet below ground surface (ft bgs)   | Not answered. |
| What method was used to determine the depth to ground water  | Not answered. |
| Did this release impact groundwater or surface water   | Not answered. |
| <b>What is the minimum distance, between the closest lateral extents of the release and the following surface areas:</b>   |               |
| A continuously flowing watercourse or any other significant watercourse  | Not answered. |
| Any lakebed, sinkhole, or playa lake (measured from the ordinary high-water mark)  | Not answered. |
| An occupied permanent residence, school, hospital, institution, or church  | Not answered. |
| A spring or a private domestic fresh water well used by less than five households for domestic or stock watering purposes  | Not answered. |
| Any other fresh water well or spring   | Not answered. |
| Incorporated municipal boundaries or a defined municipal fresh water well field  | Not answered. |
| A wetland  | Not answered. |
| A subsurface mine  | Not answered. |
| An (non-karst) unstable area   | Not answered. |
| Categorize the risk of this well / site being in a karst geology   | Not answered. |
| A 100-year floodplain  | Not answered. |
| Did the release impact areas not on an exploration, development, production, or storage site   | Not answered. |

|   |    |
|---|----|
| <b>Remediation Plan</b><br><i>Please answer all the questions that apply or are indicated. This information must be provided to the appropriate district office no later than 90 days after the release discovery date.</i>   |    |
| Requesting a remediation plan approval with this submission   | No |
| <i>The OCD recognizes that proposed remediation measures may have to be minimally adjusted in accordance with the physical realities encountered during remediation. If the responsible party has any need to significantly deviate from the remediation plan proposed, then it should consult with the division to determine if another remediation plan submission is required.</i> |    |

**District I**  
1625 N. French Dr., Hobbs, NM 88240  
Phone:(575) 393-6161 Fax:(575) 393-0720

**District II**  
811 S. First St., Artesia, NM 88210  
Phone:(575) 748-1283 Fax:(575) 748-9720

**District III**  
1000 Rio Brazos Rd., Aztec, NM 87410  
Phone:(505) 334-6178 Fax:(505) 334-6170

**District IV**  
1220 S. St Francis Dr., Santa Fe, NM 87505  
Phone:(505) 476-3470 Fax:(505) 476-3462

State of New Mexico  
Energy, Minerals and Natural Resources  
Oil Conservation Division  
1220 S. St Francis Dr.  
Santa Fe, NM 87505

CONDITIONS

Action 375769

CONDITIONS

|   |   |
|---|---|
| Operator:<br>CIMAREX ENERGY CO.<br>6001 Deauville Blvd<br>Midland, TX 79706 | OGRID:<br>215099  |
|   | Action Number:<br>375769                                |
|   | Action Type:<br>[C-141] Initial C-141 (C-141-v-Initial) |

CONDITIONS

|            |           |                |
|------------|-----------|----------------|
| Created By | Condition | Condition Date |
| scwells    | None      | 8/22/2024      |

**District I**  
1625 N. French Dr., Hobbs, NM 88240  
Phone:(575) 393-6161 Fax:(575) 393-0720  
**District II**  
811 S. First St., Artesia, NM 88210  
Phone:(575) 748-1283 Fax:(575) 748-9720  
**District III**  
1000 Rio Brazos Rd., Aztec, NM 87410  
Phone:(505) 334-6178 Fax:(505) 334-6170  
**District IV**  
1220 S. St Francis Dr., Santa Fe, NM 87505  
Phone:(505) 476-3470 Fax:(505) 476-3462

**State of New Mexico**  
**Energy, Minerals and Natural Resources**  
**Oil Conservation Division**  
**1220 S. St Francis Dr.**  
**Santa Fe, NM 87505**

QUESTIONS  
  
Action 378276

QUESTIONS

|   |  |
|---|--|
| Operator:<br>CIMAREX ENERGY CO.<br>6001 Deauville Blvd<br>Midland, TX 79706 | OGRID:<br>215099   |
|   | Action Number:<br>378276   |
|   | Action Type:<br>[NOTIFY] Notification Of Liner Inspection (C-141L) |

QUESTIONS

|                   |   |
|-------------------|---|
| Prerequisites     |   |
| Incident ID (n#)  | nAPP2422727571                                |
| Incident Name     | NAPP2422727571 TRES EQUIS STATE 2H-6H CTB @ 0 |
| Incident Type     | Produced Water Release                        |
| Incident Status   | Initial C-141 Approved                        |
| Incident Facility | [fAPP2202685531] TRES EQUIS STATE 2H-6H       |

|                            |                            |
|----------------------------|----------------------------|
| Location of Release Source |                            |
| Site Name                  | TRES EQUIS STATE 2H-6H CTB |
| Date Release Discovered    | 08/13/2024                 |
| Surface Owner              | State                      |

|   |   |
|---|---|
| Liner Inspection Event Information  |   |
| Please answer all the questions in this group.  |   |
| What is the liner inspection surface area in square feet  | 13,442  |
| Have all the impacted materials been removed from the liner   | Yes   |
| Liner inspection date pursuant to Subparagraph (a) of Paragraph (5) of Subsection A of 19.15.29.11 NMAC | 08/29/2024  |
| Time liner inspection will commence   | 10:00 AM  |
| Please provide any information necessary for observers to liner inspection                              | Inspection vessel/tank containment in Southeast corner of location. |
| Please provide any information necessary for navigation to liner inspection site                        | Coordinates 32.25301, -103.61342                                    |

**District I**  
1625 N. French Dr., Hobbs, NM 88240  
Phone:(575) 393-6161 Fax:(575) 393-0720  
**District II**  
811 S. First St., Artesia, NM 88210  
Phone:(575) 748-1283 Fax:(575) 748-9720  
**District III**  
1000 Rio Brazos Rd., Aztec, NM 87410  
Phone:(505) 334-6178 Fax:(505) 334-6170  
**District IV**  
1220 S. St Francis Dr., Santa Fe, NM 87505  
Phone:(505) 476-3470 Fax:(505) 476-3462

State of New Mexico  
Energy, Minerals and Natural Resources  
Oil Conservation Division  
1220 S. St Francis Dr.  
Santa Fe, NM 87505

CONDITIONS  
  
Action 378276

CONDITIONS

|   |  |
|---|--|
| Operator:<br>CIMAREX ENERGY CO.<br>6001 Deauville Blvd<br>Midland, TX 79706 | OGRID:<br>215099   |
|   | Action Number:<br>378276   |
|   | Action Type:<br>[NOTIFY] Notification Of Liner Inspection (C-141L) |

CONDITIONS

| Created By | Condition  | Condition Date |
|------------|--|----------------|
| lluig      | Failure to notify the OCD of liner inspections including any changes in date/time per the requirements of 19.15.29.11.A(5)(a)(ii) NMAC, may result in the inspection not being accepted. | 8/27/2024      |





# Liner Integrity Certification

The following serves to verify that the affected liner has been inspected and found to be in serviceable condition in accordance with 19.15.29.11 A.(5)(a)(i-ii) of the New Mexico Administrative Code.

Facility ID: fAPP2202685531

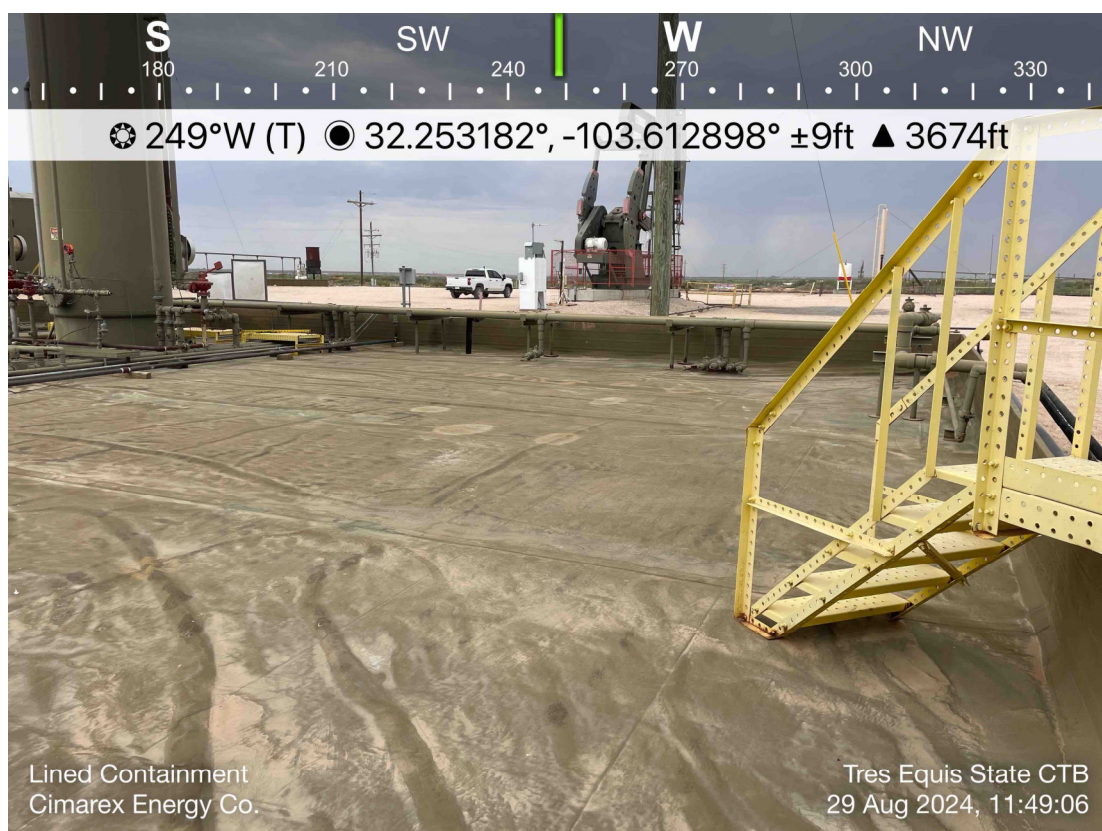
Date: 9/11/2024

Incident ID(s): NAPP2422727571

- ☒ Responsible Party has visually inspected the liner.
- ☒ Liner remains intact and was able to contain the leak in question.
- ☒ At least two business days' notice was given to the appropriate division district office before conducting the liner inspection.
- ☒ Photographs illustrating liner integrity are included.



CIMAREX ENERGY  
TRES EQUIS STATE 2H-6H CTB  
LEA CO, NM







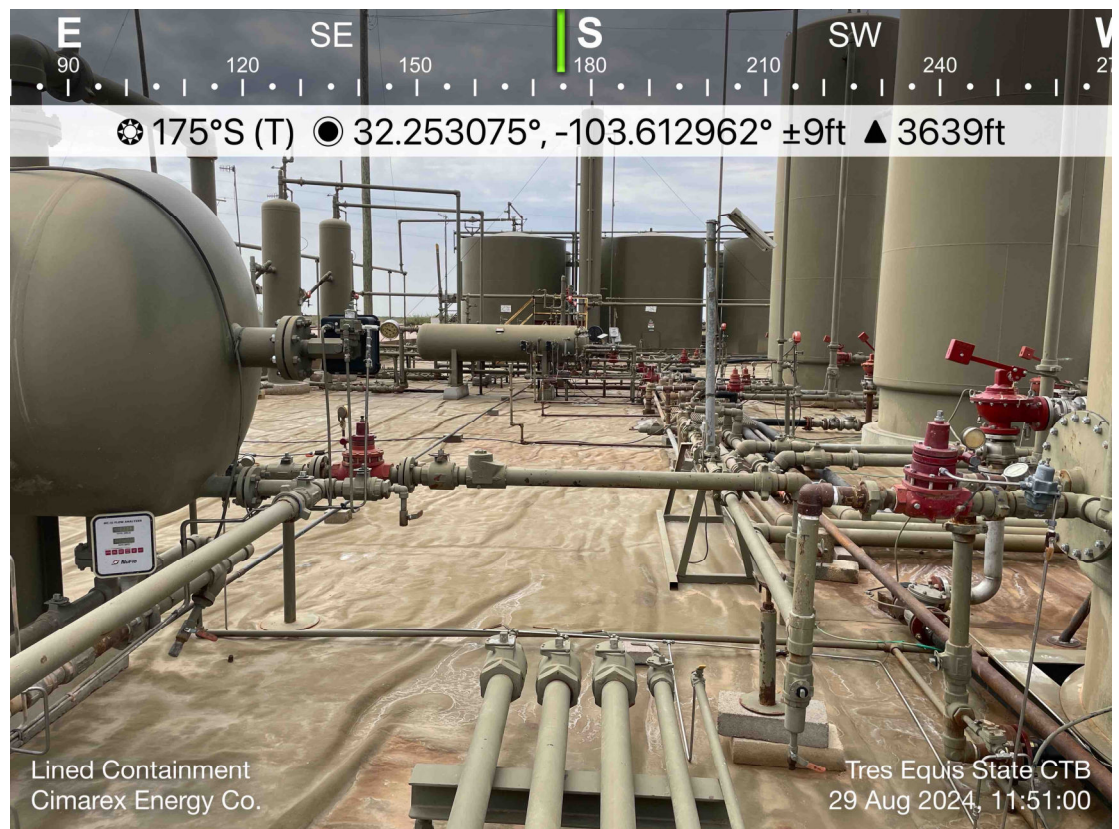
CIMAREX ENERGY  
TRES EQUIS STATE 2H-6H CTB  
LEA CO, NM







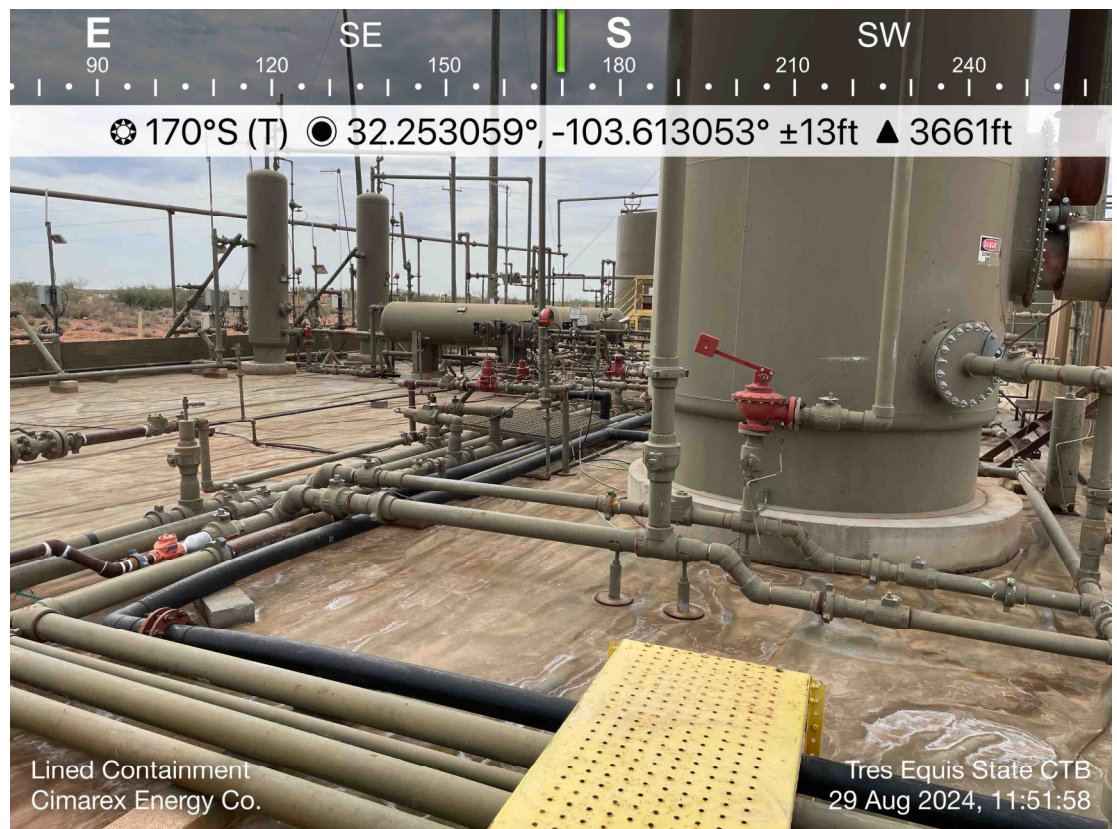
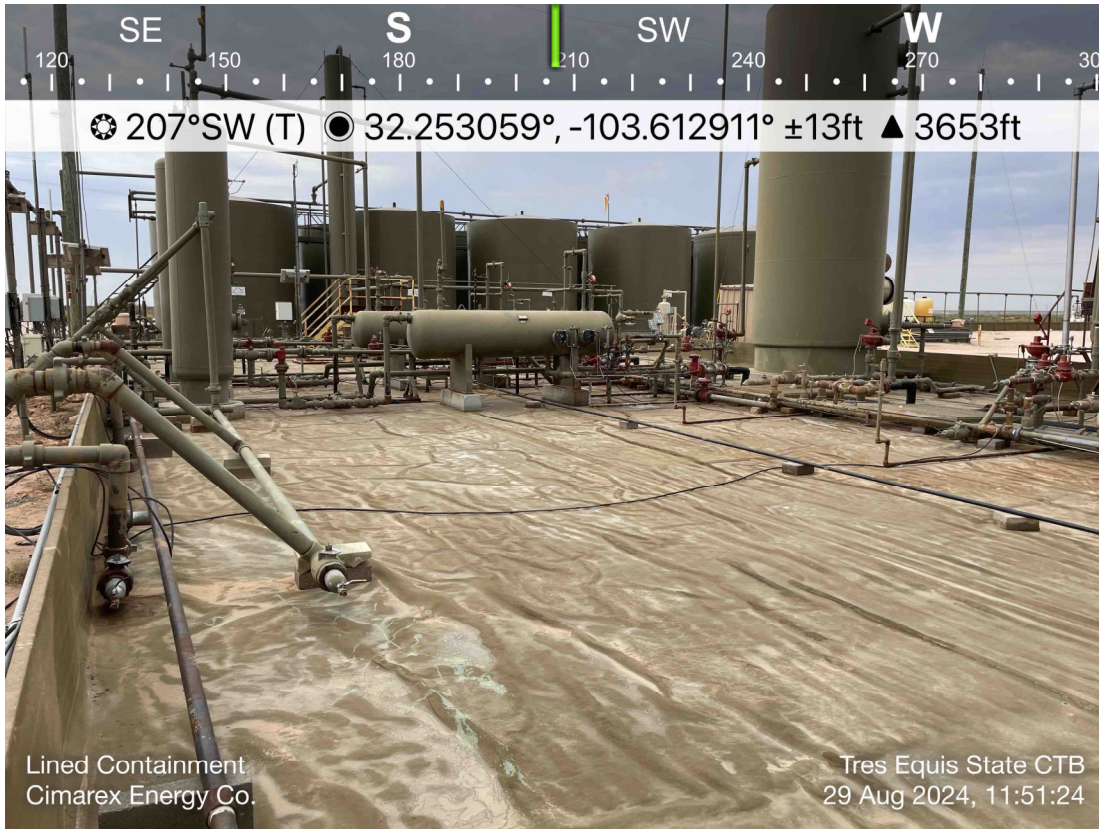
CIMAREX ENERGY  
TRES EQUIS STATE 2H-6H CTB  
LEA CO, NM







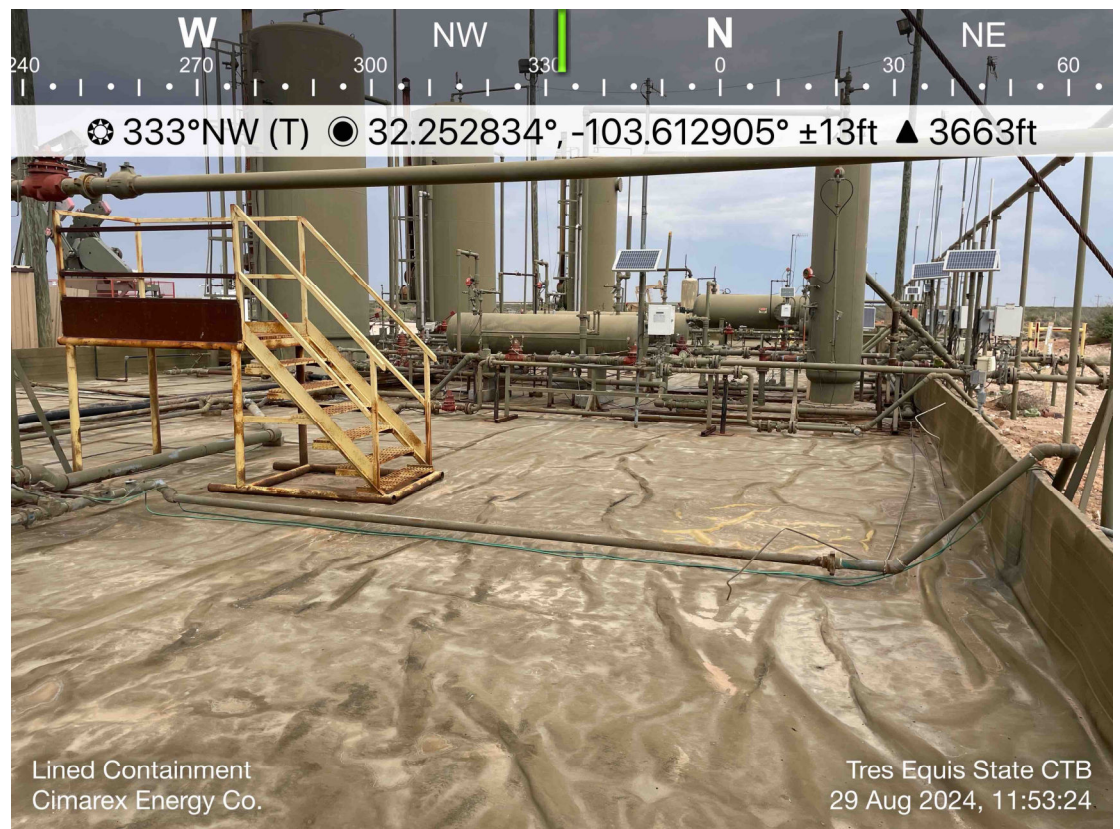
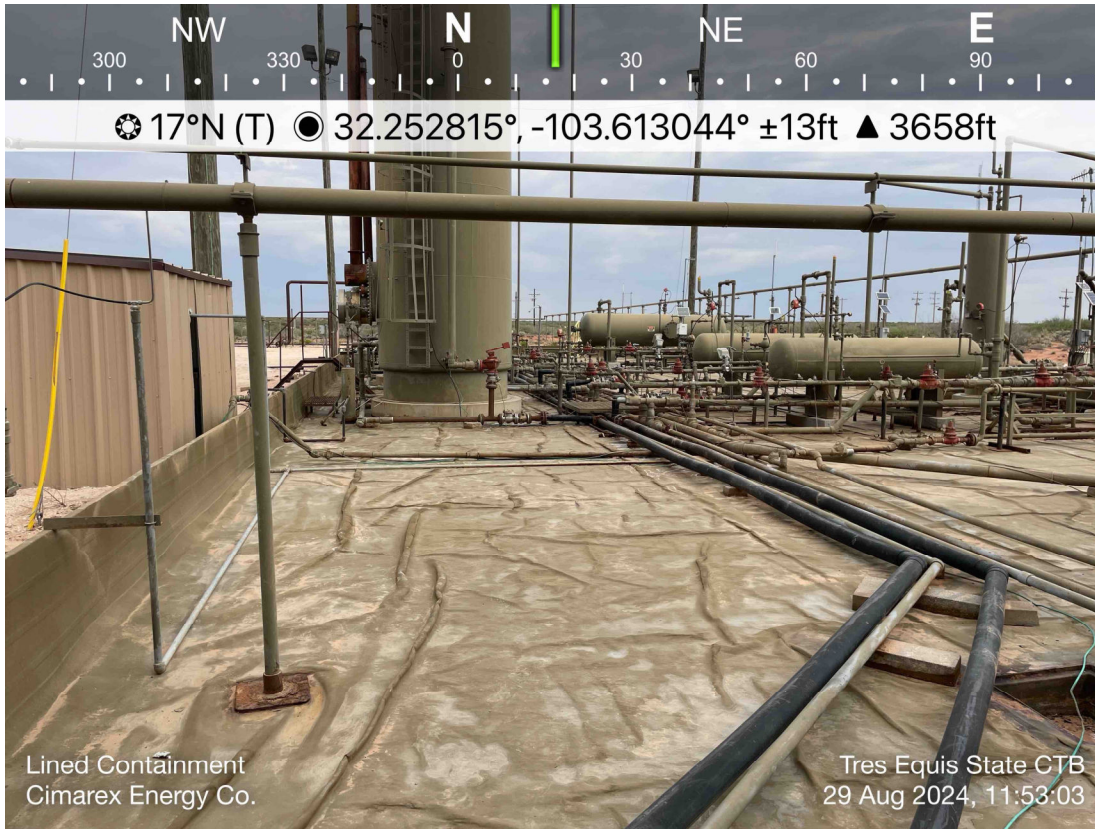
CIMAREX ENERGY  
TRES EQUIS STATE 2H-6H CTB  
LEA CO, NM







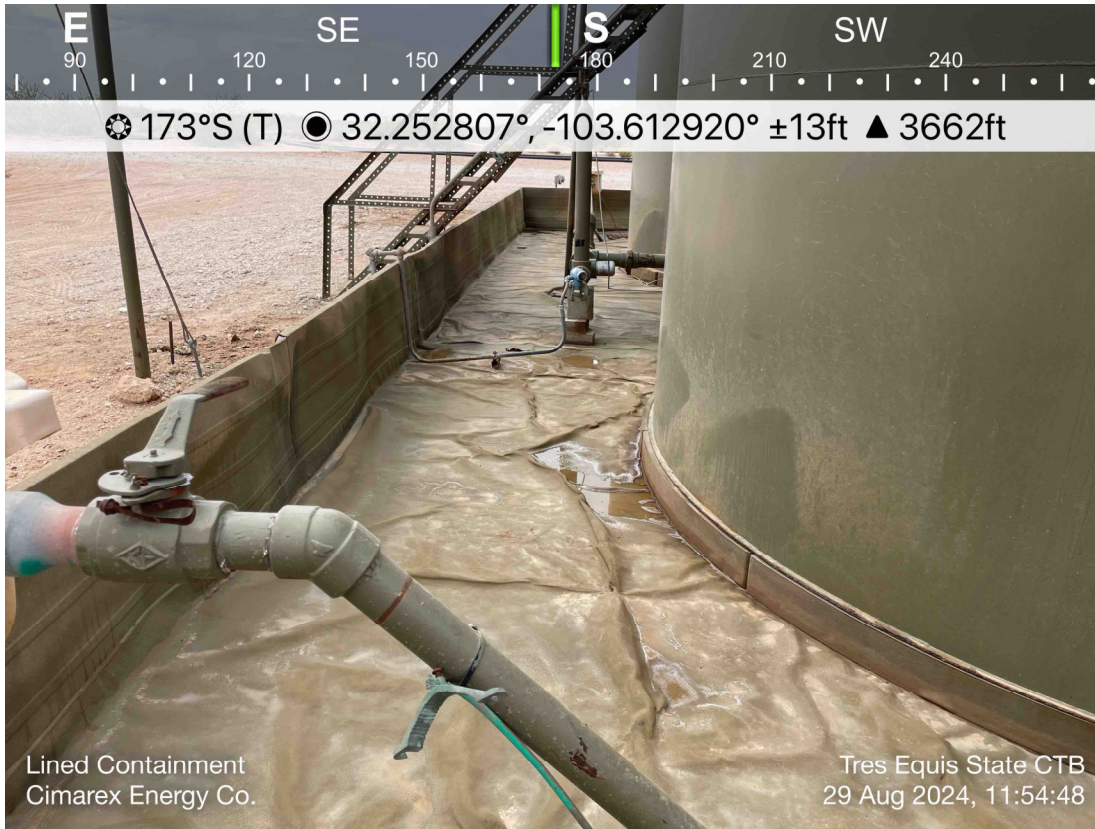
CIMAREX ENERGY  
TRES EQUIS STATE 2H-6H CTB  
LEA CO, NM







CIMAREX ENERGY  
TRES EQUIS STATE 2H-6H CTB  
LEA CO, NM







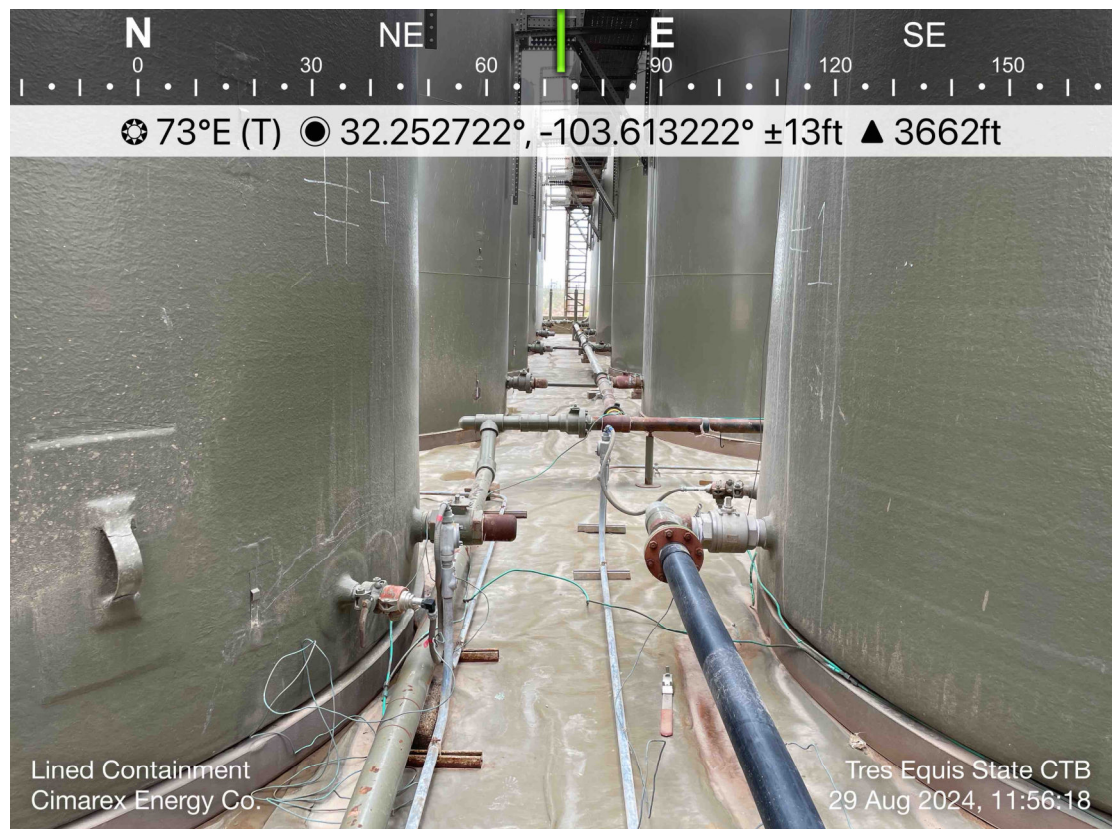
CIMAREX ENERGY  
TRES EQUIS STATE 2H-6H CTB  
LEA CO, NM







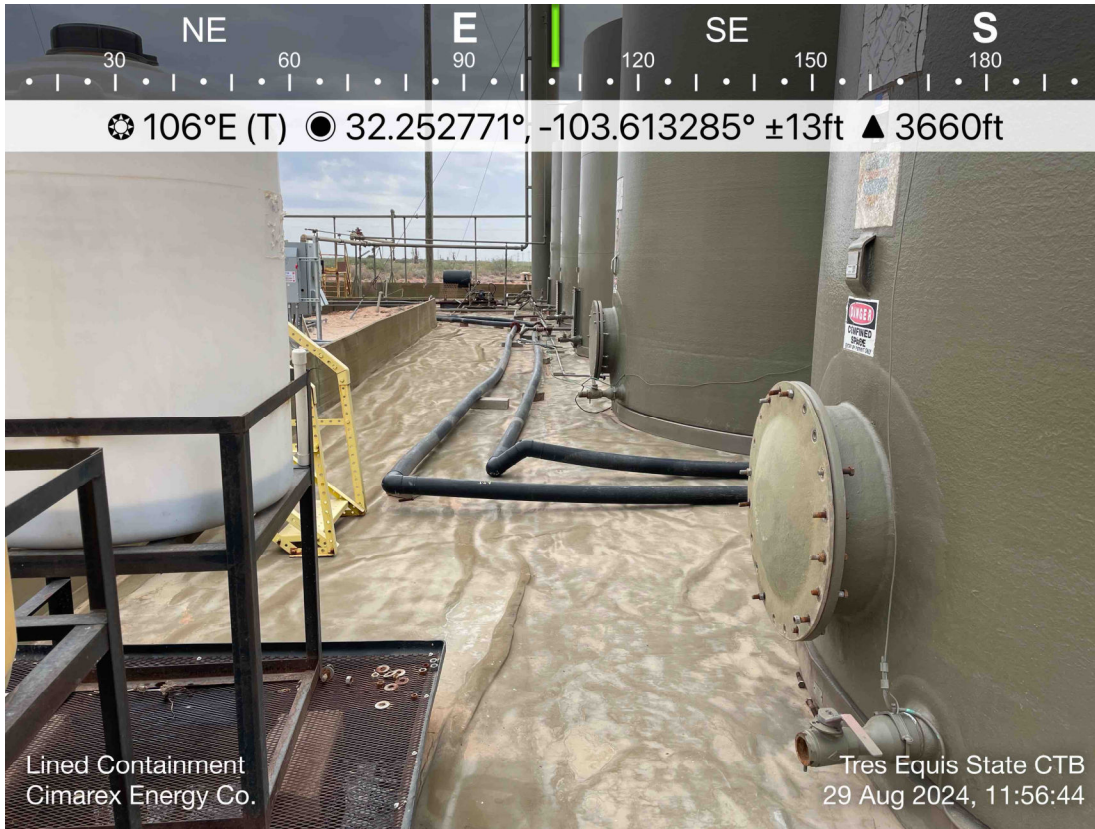
CIMAREX ENERGY  
TRES EQUIS STATE 2H-6H CTB  
LEA CO, NM









CIMAREX ENERGY  
TRES EQUIS STATE 2H-6H CTB  
LEA CO, NM






**Site map**  
CIMAREX ENERGY CO.

**Legend**

-  Containment Area
-  TRES EQUIS STATE 2H-6H CTB (08.13.2024)

TRES EQUIS STATE 2H-6H CTB (08.13.2024) 

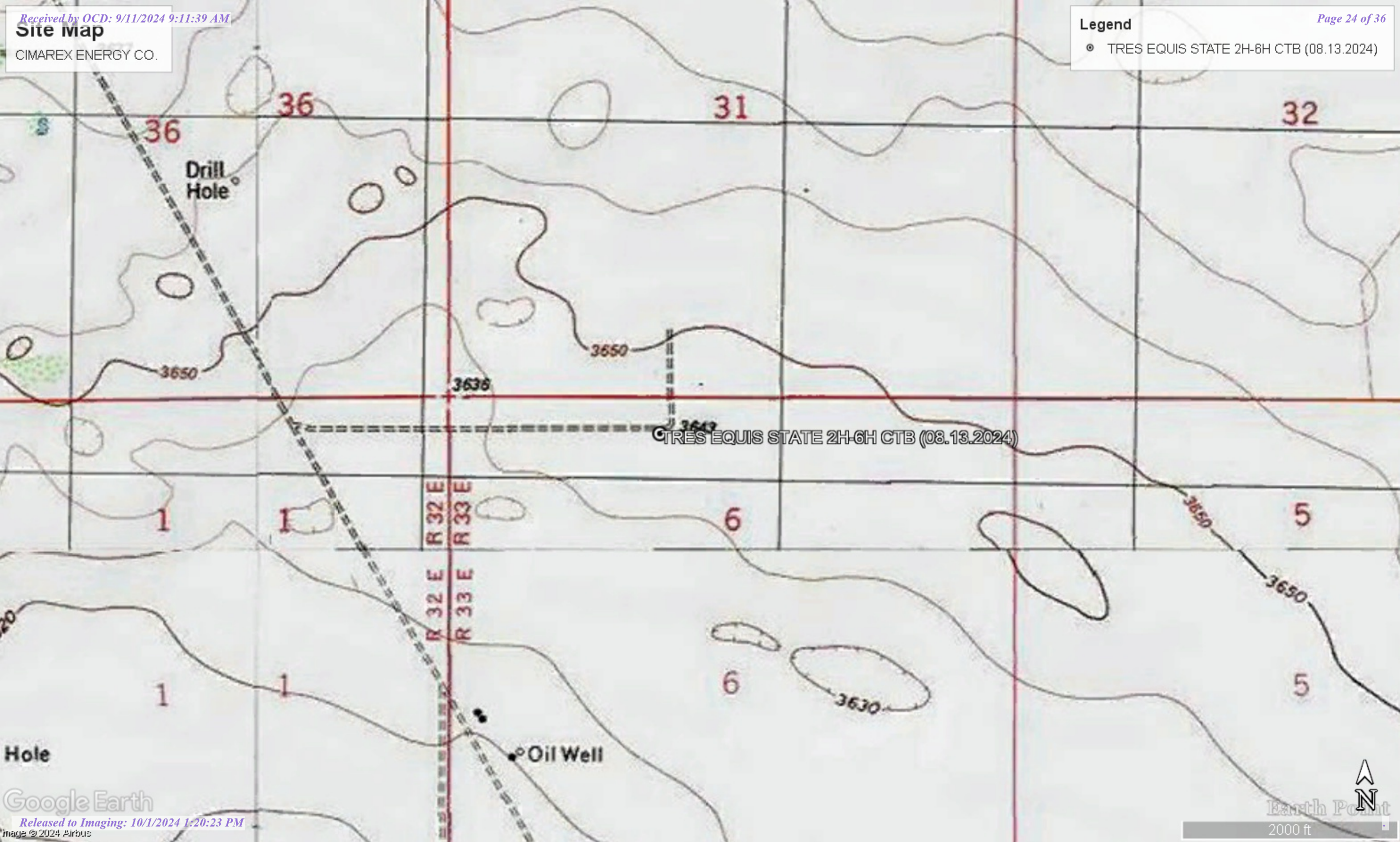




**Site map**  
CIMAREX ENERGY CO.

**Legend**

- TRES EQUIS STATE 2H-6H CTB (08.13.2024)



Hole

Google Earth

Oil Well

Earth Point

2000 ft

N



**Nearest water well**

CIMAREX ENERGY CO.

**Legend**

- 0.15 Miles
- 0.50 Mile Radius
- Groundwater Determination Bore
- TRES EQUIS STATE 2H-6H CTB (08.13.2024)



GWDB - 108' - Drilled 2021

TRES EQUIS STATE 2H-6H CTB (08.13.2024)





Low Karst

CIMAREX ENERGY CO.

Legend

- Low
- TRES EQUIS STATE 2H-6H CTB (08.13.2024)

TRES EQUIS STATE 2H-6H CTB (08.13.2024)





New Mexico Office of the State Engineer

Water Column/Average Depth to Water

(A CLW##### in the POD suffix indicates the POD has been replaced & no longer serves a water right file.)

(R=POD has been replaced, O=orphaned, C=the file is closed)

(quarters are smallest to largest)

(meters)

(In feet)

| POD Number                   | Code | Sub basin | County | Q64 | Q16 | Q4 | Sec | Tws | Range | X        | Y           | Map | Distance | Well Depth | Depth Water | Water Column |
|------------------------------|------|-----------|--------|-----|-----|----|-----|-----|-------|----------|-------------|-----|----------|------------|-------------|--------------|
| <a href="#">C 04551 POD1</a> |      | CUB       | LE     | SE  | SE  | SW | 31  | 23S | 33E   | 630671.0 | 3569556.5   |     | 239      |            |             |              |
| <a href="#">C 03591 POD1</a> |      | CUB       | LE     | NE  | NW  | SE | 05  | 24S | 33E   | 632731.3 | 3568518.0   |     | 2265     |            |             |              |
| <a href="#">C 04707 POD1</a> |      | CUB       | LE     | SE  | SW  | SW | 33  | 23S | 33E   | 633412.6 | 3569469.4   |     | 2802     |            |             |              |
| <a href="#">C 01932</a>      |      | C         | ED     |     | SW  | NW | 12  | 24S | 32E   | 628633.0 | 3567188.0 * |     | 2913     | 492        |             |              |
| <a href="#">C 03565 POD3</a> |      | CUB       | LE     |     | SW  | SE | 08  | 24S | 33E   | 632763.4 | 3566546.9   |     | 3511     |            | 1533        |              |
| <a href="#">C 02279</a>      |      | CUB       | LE     | SW  | SE  | SW | 28  | 23S | 33E   | 633691.0 | 3571173.0 * |     | 3589     | 650        | 400         | 250          |
| <a href="#">C 02276</a>      |      | CUB       | LE     | SW  | NW  | SE | 19  | 23S | 33E   | 630848.0 | 3573154.0 * |     | 3837     | 650        | 400         | 250          |

Average Depth to Water: 777 feet

Minimum Depth: 400 feet

Maximum Depth: 1533 feet

Record Count: 7

UTM Filters (in meters):

Easting: 630614.00

Northing: 3569324.00

Radius: 4000

\* UTM location was derived from PLSS - see Help

The data is furnished by the NMOSE/ISC and is accepted by the recipient with the expressed understanding that the OSE/ISC make no warranties, expressed or implied, concerning the accuracy, completeness, reliability, usability, or suitability for any particular purpose of the data.





# WELL RECORD & LOG

OFFICE OF THE STATE ENGINEER

[www.ose.state.nm.us](http://www.ose.state.nm.us)

USE DTI AUG 17 2021 4:03

|   |   |                           |  |   |   |  |   |                          |
|---|---|---------------------------|--|---|---|--|---|--------------------------|
| 1. GENERAL AND WELL LOCATION  | OSE POD NO. (WELL NO.)<br>POD1 (BH-01)  |                           | WELL TAG ID NO.<br>n/a                       |   | OSE FILE NO(S).<br>C-4551                               |  |   |                          |
|   | WELL OWNER NAME(S)<br>XTO Energy (Kyle Littrell)  |                           |  |   | PHONE (OPTIONAL)  |  |   |                          |
|   | WELL OWNER MAILING ADDRESS<br>6401 Holiday Hill Dr.   |                           |  |   | CITY<br>Midland   | STATE<br>TX  | ZIP<br>79707                              |                          |
|   | WELL LOCATION<br>(FROM GPS)   | DEGREES<br>LATITUDE<br>32 | MINUTES<br>15                                | SECONDS<br>18.36<br>N   | * ACCURACY REQUIRED: ONE TENTH OF A SECOND              |  |   |                          |
|   |   | LONGITUDE<br>103          | 36   | 46.04<br>W  | * DATUM REQUIRED: WGS 84                                |  |   |                          |
| DESCRIPTION RELATING WELL LOCATION TO STREET ADDRESS AND COMMON LANDMARKS - PLSS (SECTION, TOWNSHIP, RANGE) WHERE AVAILABLE<br>SE SW Sec. 31T23S R33E |   |                           |  |   |   |  |   |                          |
| 2. DRILLING & CASING INFORMATION  | LICENSE NO.<br>1249   |                           | NAME OF LICENSED DRILLER<br>Jackie D. Atkins |   |   | NAME OF WELL DRILLING COMPANY<br>Atkins Engineering Associates, Inc. |   |                          |
|   | DRILLING STARTED<br>07/20/2021  |                           | DRILLING ENDED<br>07/20/2021                 |   | DEPTH OF COMPLETED WELL (FT)<br>temporary well material | BORE HOLE DEPTH (FT)<br>108  | DEPTH WATER FIRST ENCOUNTERED (FT)<br>n/a |                          |
|   | COMPLETED WELL IS: <input type="checkbox"/> ARTESIAN <input checked="" type="checkbox"/> DRY HOLE <input type="checkbox"/> SHALLOW (UNCONFINED)   |                           |  |   |   | STATIC WATER LEVEL IN COMPLETED WELL (FT)<br>n/a                     |   |                          |
|   | DRILLING FLUID: <input type="checkbox"/> AIR <input type="checkbox"/> MUD ADDITIVES - SPECIFY:  |                           |  |   |   |  |   |                          |
|   | DRILLING METHOD: <input type="checkbox"/> ROTARY <input type="checkbox"/> HAMMER <input type="checkbox"/> CABLE TOOL <input checked="" type="checkbox"/> OTHER - SPECIFY: Hollow Stem Auger |                           |  |   |   |  |   |                          |
|   | DEPTH (feet bgl)  |                           | BORE HOLE<br>DIAM.<br>(inches)               | CASING MATERIAL AND/OR<br>GRADE<br>(include each casing string, and<br>note sections of screen) | CASING<br>CONNECTION<br>TYPE<br>(add coupling diameter) | CASING<br>INSIDE DIAM.<br>(inches)                                   | CASING WALL<br>THICKNESS<br>(inches)      | SLOT<br>SIZE<br>(inches) |
|   | FROM  | TO                        |  |   |   |  |   |                          |
|   | 0   | 108                       | ±6.5   | Boring- HSA   | --  | --   | --  | --                       |
|   |   |                           |  |   |   |  |   |                          |
|   |   |                           |  |   |   |  |   |                          |
|   |   |                           |  |   |   |  |   |                          |
|   |   |                           |  |   |   |  |   |                          |
|   |   |                           |  |   |   |  |   |                          |
|   |   |                           |  |   |   |  |   |                          |
| 3. ANNULAR MATERIAL   | DEPTH (feet bgl)  |                           | BORE HOLE<br>DIAM. (inches)                  | LIST ANNULAR SEAL MATERIAL AND<br>GRAVEL PACK SIZE-RANGE BY INTERVAL                            | AMOUNT<br>(cubic feet)                                  | METHOD OF<br>PLACEMENT   |   |                          |
|   | FROM  | TO                        |  |   |   |  |   |                          |
|   |   |                           |  |   |   |  |   |                          |
|   |   |                           |  |   |   |  |   |                          |
|   |   |                           |  |   |   |  |   |                          |
|   |   |                           |  |   |   |  |   |                          |
|   |   |                           |  |   |   |  |   |                          |
|   |   |                           |  |   |   |  |   |                          |


FOR OSE INTERNAL USE

WR-20 WELL RECORD & LOG (Version 06/30/17)

|                         |                 |                |
|-------------------------|-----------------|----------------|
| FILE NO. C-4551         | POD NO. 1       | TRN NO. 699428 |
| LOCATION 135-33E-31 443 | WELL TAG ID NO. | PAGE 1 OF 2    |



DSE DTI AUG 17 2021 PM 3:09

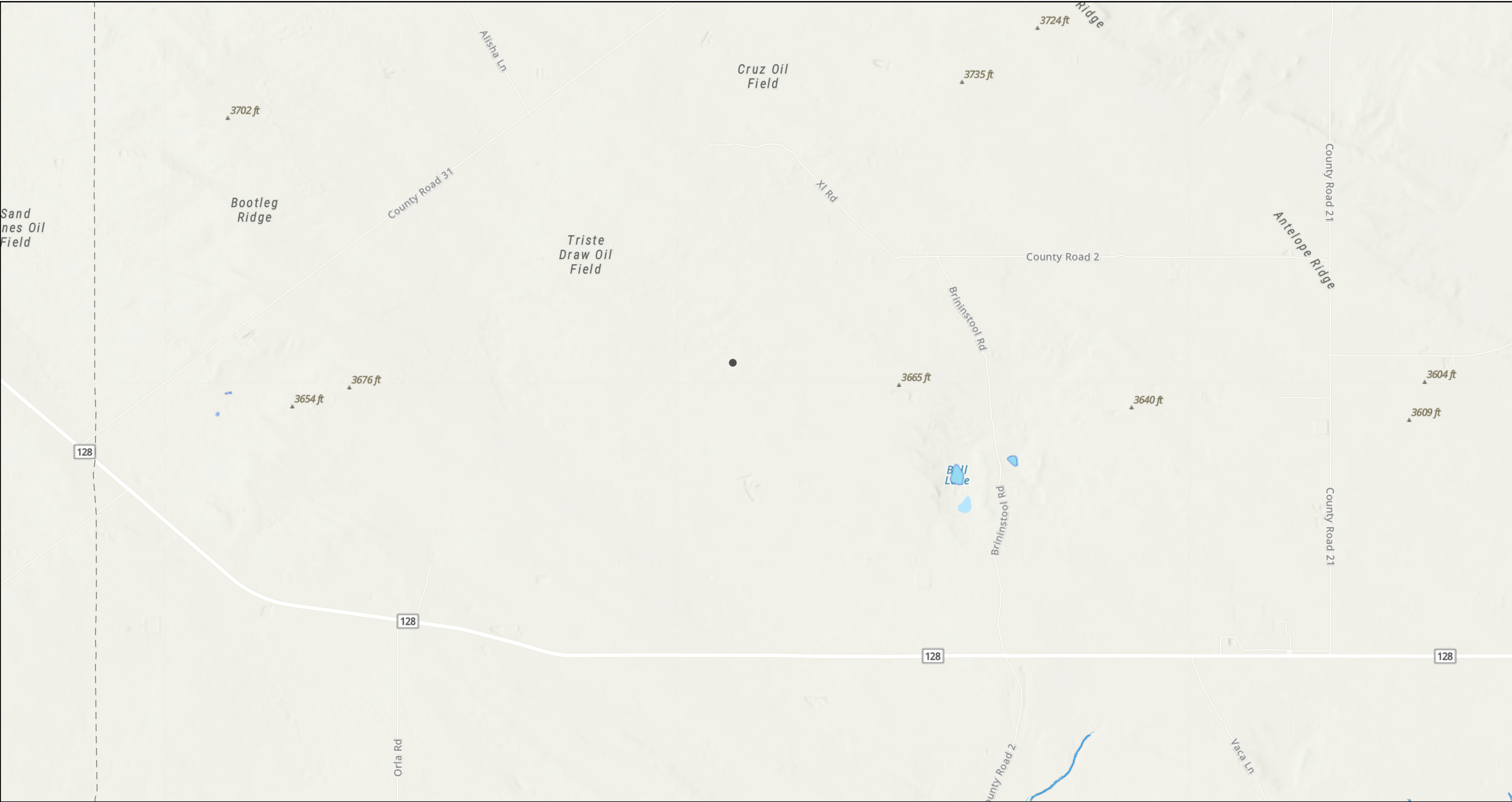
| 4. HYDROGEOLOGIC LOG OF WELL  | DEPTH (feet bgl)  |   | THICKNESS<br>(feet) | COLOR AND TYPE OF MATERIAL ENCOUNTERED -<br>INCLUDE WATER-BEARING CAVITIES OR FRACTURE ZONES<br>(attach supplemental sheets to fully describe all units) | WATER<br>BEARING?<br>(YES / NO)           | ESTIMATED<br>YIELD FOR<br>WATER-<br>BEARING<br>ZONES (gpm) |
|---|---|---|---------------------|--|---|--|
|   | FROM  | TO  |                     |  |   |  |
|   | 0   | 15  | 15                  | Sand, fine grain, poorly graded, moist, Reddish Brown  | Y ✓ N                                     |  |
|   | 15  | 40  | 25                  | Caliche, poorly consolidated, Tan-Off White  | Y ✓ N                                     |  |
|   | 40  | 45  | 5                   | Sand, medium-fine grain, poorly graded, trace caliche, Light Brown   | Y ✓ N                                     |  |
|   | 45  | 50  | 5                   | Clayey Sand, fine- medium grain , poorly graded, cohesive, Reddish Brown   | Y ✓ N                                     |  |
|   | 50  | 55  | 5                   | Sandy Clay, fine- medium grain , poorly graded, cohesive, Reddish Brown  | Y ✓ N                                     |  |
|   | 55  | 70  | 15                  | Claystone, poorly cemented, cohesive, Reddish brown,   | Y ✓ N                                     |  |
|   | 70  | 75  | 5                   | Clayey Sand, medium grain , poorly graded, cohesive, Light Brown   | Y ✓ N                                     |  |
|   | 75  | 80  | 5                   | Silty Sand, fine- very finegrain , poorly graded, cohesive, Light Brown  | Y ✓ N                                     |  |
|   | 80  | 85  | 5                   | Clayey Sand, fine- medium grain , poorly graded, cohesive, Light Brown   | Y ✓ N                                     |  |
|   | 85  | 100   | 15                  | Sandy Clay, poorly graded, cohesive, Reddish Brown   | Y ✓ N                                     |  |
|   | 100   | 105   | 5                   | Clay, low plasticity, cohesive, Brown-Blueish Gray, Dry  | Y ✓ N                                     |  |
|   | 105   | 108   | 3                   | Claystone, poorly cemented, cohesive, Reddish brown, dry   | Y ✓ N                                     |  |
|   |   |   |                     |  | Y N                                       |  |
|   |   |   |                     |  | Y N                                       |  |
|   |   |   |                     |  | Y N                                       |  |
|   |   |   |                     |  | Y N                                       |  |
|   |   |   |                     |  | Y N                                       |  |
|   |   |   |                     |  | Y N                                       |  |
|   |   |   |                     |  | Y N                                       |  |
|   |   |   |                     |  | Y N                                       |  |
|   |   |   |                     |  | Y N                                       |  |
| METHOD USED TO ESTIMATE YIELD OF WATER-BEARING STRATA:  |   |   |                     |  | TOTAL ESTIMATED<br>WELL YIELD (gpm): 0.00 |  |
| <input type="checkbox"/> PUMP <input type="checkbox"/> AIR LIFT <input type="checkbox"/> BAILER <input type="checkbox"/> OTHER - SPECIFY: |   |   |                     |  |   |  |
| 5. TEST; RIG SUPERVISION  | WELL TEST   | TEST RESULTS - ATTACH A COPY OF DATA COLLECTED DURING WELL TESTING, INCLUDING DISCHARGE METHOD, START TIME, END TIME, AND A TABLE SHOWING DISCHARGE AND DRAWDOWN OVER THE TESTING PERIOD. |                     |  |   |  |
|   | MISCELLANEOUS INFORMATION: Temporary well materials removed and the soil boring backfilled using drill cuttings from total depth to ten feet below ground surface, then hydrated bentonite chips from ten feet below ground surface to surface. Logs adapted from WSP on-site geologist.                    |   |                     |  |   |  |
|   | PRINT NAME(S) OF DRILL RIG SUPERVISOR(S) THAT PROVIDED ONSITE SUPERVISION OF WELL CONSTRUCTION OTHER THAN LICENSEE:<br>Shane Eldridge, Carmelo Trevino, Cameron Pruitt  |   |                     |  |   |  |
| 6. SIGNATURE  | THE UNDERSIGNED HEREBY CERTIFIES THAT, TO THE BEST OF HIS OR HER KNOWLEDGE AND BELIEF, THE FOREGOING IS A TRUE AND CORRECT RECORD OF THE ABOVE DESCRIBED HOLE AND THAT HE OR SHE WILL FILE THIS WELL RECORD WITH THE STATE ENGINEER AND THE PERMIT HOLDER WITHIN 30 DAYS AFTER COMPLETION OF WELL DRILLING: |   |                     |  |   |  |
|   | <br>SIGNATURE OF DRILLER / PRINT SIGNEE NAME   |   |                     | Jackie D. Atkins<br>DATE   |   |  |

FOR OSE INTERNAL USE

WR-20 WELL RECORD &amp; LOG (Version 06/30/2017)

|                         |                 |                |
|-------------------------|-----------------|----------------|
| FILE NO. C-4551         | POD NO. 1       | TRN NO. 699428 |
| LOCATION 23S-33E-31 443 | WELL TAG ID NO. | PAGE 2 OF 2    |

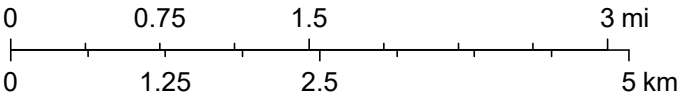
# TRES EQUIS STATE 2H-6H CTB (08.13.2024)



8/27/2024, 2:53:23 PM

- OSW Water Bodys
- OSE Streams

1:72,224



Texas Parks & Wildlife, CONANP, Esri, TomTom, Garmin, SafeGraph, GeoTechnologies, Inc, METI/NASA, USGS, EPA, NPS, USDA, USFWS, Esri, NASA, NGA, USGS, FEMA, NM OSE

**District I**  
1625 N. French Dr., Hobbs, NM 88240  
Phone:(575) 393-6161 Fax:(575) 393-0720  
**District II**  
811 S. First St., Artesia, NM 88210  
Phone:(575) 748-1283 Fax:(575) 748-9720  
**District III**  
1000 Rio Brazos Rd., Aztec, NM 87410  
Phone:(505) 334-6178 Fax:(505) 334-6170  
**District IV**  
1220 S. St Francis Dr., Santa Fe, NM 87505  
Phone:(505) 476-3470 Fax:(505) 476-3462

State of New Mexico  
Energy, Minerals and Natural Resources  
Oil Conservation Division  
1220 S. St Francis Dr.  
Santa Fe, NM 87505

QUESTIONS  
  
Action 382460

QUESTIONS

|   |                |   |
|---|----------------|---|
| Operator:<br>CIMAREX ENERGY CO.<br>6001 Deauville Blvd<br>Midland, TX 79706 | OGRID:         | 215099  |
|   | Action Number: | 382460  |
|   | Action Type:   | [C-141] Remediation Closure Request C-141 (C-141-v-Closure) |
|   |                |   |

QUESTIONS

|                   |   |
|-------------------|---|
| Prerequisites     |   |
| Incident ID (n#)  | nAPP2422727571                                |
| Incident Name     | NAPP2422727571 TRES EQUIS STATE 2H-6H CTB @ 0 |
| Incident Type     | Produced Water Release                        |
| Incident Status   | Remediation Closure Report Received           |
| Incident Facility | [fAPP2202685531] TRES EQUIS STATE 2H-6H       |

|  |                            |
|--|----------------------------|
| Location of Release Source                     |                            |
| Please answer all the questions in this group. |                            |
| Site Name                                      | TRES EQUIS STATE 2H-6H CTB |
| Date Release Discovered                        | 08/13/2024                 |
| Surface Owner                                  | State                      |

|  |                        |
|--|------------------------|
| Incident Details   |                        |
| Please answer all the questions in this group.   |                        |
| Incident Type  | Produced Water Release |
| Did this release result in a fire or is the result of a fire   | No                     |
| Did this release result in any injuries  | No                     |
| Has this release reached or does it have a reasonable probability of reaching a watercourse          | No                     |
| Has this release endangered or does it have a reasonable probability of endangering public health    | No                     |
| Has this release substantially damaged or will it substantially damage property or the environment   | No                     |
| Is this release of a volume that is or may with reasonable probability be detrimental to fresh water | No                     |

|  |   |
|--|---|
| Nature and Volume of Release   |   |
| Material(s) released, please answer all that apply below. Any calculations or specific justifications for the volumes provided should be attached to the follow-up C-141 submission. |   |
| Crude Oil Released (bbls) Details  | Not answered.   |
| Produced Water Released (bbls) Details   | Cause: Equipment Failure   Separator   Produced Water   Released: 9 BBL   Recovered: 9 BBL   Lost: 0 BBL.   |
| Is the concentration of chloride in the produced water >10,000 mg/l  | Yes   |
| Condensate Released (bbls) Details   | Not answered.   |
| Natural Gas Vented (Mcf) Details   | Not answered.   |
| Natural Gas Flared (Mcf) Details   | Not answered.   |
| Other Released Details   | Not answered.   |
| Are there additional details for the questions above (i.e. any answer containing Other, Specify, Unknown, and/or Fire, or any negative lost amounts)                                 | The 90 below dump valve on the heater treater washed out and released 9 barrels produced water into the lined containment. A vac truck was able to recover all fluids. The containment is scheduled to be washed. |

**District I**

1625 N. French Dr., Hobbs, NM 88240  
Phone:(575) 393-6161 Fax:(575) 393-0720

**District II**

811 S. First St., Artesia, NM 88210  
Phone:(575) 748-1283 Fax:(575) 748-9720

**District III**

1000 Rio Brazos Rd., Aztec, NM 87410  
Phone:(505) 334-6178 Fax:(505) 334-6170

**District IV**

1220 S. St Francis Dr., Santa Fe, NM 87505  
Phone:(505) 476-3470 Fax:(505) 476-3462

**State of New Mexico**  
**Energy, Minerals and Natural Resources**  
**Oil Conservation Division**  
**1220 S. St Francis Dr.**  
**Santa Fe, NM 87505**

QUESTIONS, Page 2

Action 382460

**QUESTIONS (continued)**

|   |                |   |
|---|----------------|---|
| Operator:<br>CIMAREX ENERGY CO.<br>6001 Deauville Blvd<br>Midland, TX 79706 | OGRID:         | 215099  |
|   | Action Number: | 382460  |
|   | Action Type:   | [C-141] Remediation Closure Request C-141 (C-141-v-Closure) |
|   |                |   |

**QUESTIONS**

| Nature and Volume of Release (continued)  |   |
|---|---|
| Is this a gas only submission (i.e. only significant Mcf values reported)   | No, according to supplied volumes this does not appear to be a "gas only" report. |
| Was this a major release as defined by Subsection A of 19.15.29.7 NMAC  | No  |
| Reasons why this would be considered a submission for a notification of a major release   | Unavailable.  |
| With the implementation of the 19.15.27 NMAC (05/25/2021), venting and/or flaring of natural gas (i.e. gas only) are to be submitted on the C-129 form. |   |

**Initial Response**

The responsible party must undertake the following actions immediately unless they could create a safety hazard that would result in injury.

|  |               |
|--|---------------|
| The source of the release has been stopped   | True          |
| The impacted area has been secured to protect human health and the environment                                     | True          |
| Released materials have been contained via the use of berms or dikes, absorbent pads, or other containment devices | True          |
| All free liquids and recoverable materials have been removed and managed appropriately                             | True          |
| If all the actions described above have not been undertaken, explain why   | Not answered. |

Per Paragraph (4) of Subsection B of 19.15.29.8 NMAC the responsible party may commence remediation immediately after discovery of a release. If remediation has begun, please prepare and attach a narrative of actions to date in the follow-up C-141 submission. If remedial efforts have been successfully completed or if the release occurred within a lined containment area (see Subparagraph (a) of Paragraph (5) of Subsection A of 19.15.29.11 NMAC), please prepare and attach all information needed for closure evaluation in the follow-up C-141 submission.

I hereby certify that the information given above is true and complete to the best of my knowledge and understand that pursuant to OCD rules and regulations all operators are required to report and/or file certain release notifications and perform corrective actions for releases which may endanger public health or the environment. The acceptance of a C-141 report by the OCD does not relieve the operator of liability should their operations have failed to adequately investigate and remediate contamination that pose a threat to groundwater, surface water, human health or the environment. In addition, OCD acceptance of a C-141 report does not relieve the operator of responsibility for compliance with any other federal, state, or local laws and/or regulations.

|  |   |
|--|---|
| I hereby agree and sign off to the above statement | Name: Laci Luig<br>Title: ES&H Specialist<br>Email: DL_PermianEnvironmental@coterra.com<br>Date: 08/20/2024 |
|--|---|

**District I**

1625 N. French Dr., Hobbs, NM 88240  
Phone:(575) 393-6161 Fax:(575) 393-0720

**District II**

811 S. First St., Artesia, NM 88210  
Phone:(575) 748-1283 Fax:(575) 748-9720

**District III**

1000 Rio Brazos Rd., Aztec, NM 87410  
Phone:(505) 334-6178 Fax:(505) 334-6170

**District IV**

1220 S. St Francis Dr., Santa Fe, NM 87505  
Phone:(505) 476-3470 Fax:(505) 476-3462

**State of New Mexico**  
**Energy, Minerals and Natural Resources**  
**Oil Conservation Division**  
**1220 S. St Francis Dr.**  
**Santa Fe, NM 87505**

QUESTIONS, Page 3

Action 382460

**QUESTIONS (continued)**

|   |   |
|---|---|
| Operator:<br>CIMAREX ENERGY CO.<br>6001 Deauville Blvd<br>Midland, TX 79706 | OGRID:  |
|   | 215099  |
|   | Action Number:  |
|   | 382460  |
|   | Action Type:  |
|   | [C-141] Remediation Closure Request C-141 (C-141-v-Closure) |

**QUESTIONS****Site Characterization**

Please answer all the questions in this group (only required when seeking remediation plan approval and beyond). This information must be provided to the appropriate district office no later than 90 days after the release discovery date.

|  |                                |
|--|--------------------------------|
| What is the shallowest depth to groundwater beneath the area affected by the release in feet below ground surface (ft bgs) | Between 100 and 500 (ft.)      |
| What method was used to determine the depth to ground water  | NM OSE iWaters Database Search |
| Did this release impact groundwater or surface water   | No                             |
| <b>What is the minimum distance, between the closest lateral extents of the release and the following surface areas:</b>   |                                |
| A continuously flowing watercourse or any other significant watercourse  | Greater than 5 (mi.)           |
| Any lakebed, sinkhole, or playa lake (measured from the ordinary high-water mark)  | Between 1 and 5 (mi.)          |
| An occupied permanent residence, school, hospital, institution, or church  | Greater than 5 (mi.)           |
| A spring or a private domestic fresh water well used by less than five households for domestic or stock watering purposes  | Between 1 and 5 (mi.)          |
| Any other fresh water well or spring   | Between 1 and 5 (mi.)          |
| Incorporated municipal boundaries or a defined municipal fresh water well field  | Greater than 5 (mi.)           |
| A wetland  | Between 1 and 5 (mi.)          |
| A subsurface mine  | Greater than 5 (mi.)           |
| An (non-karst) unstable area   | Greater than 5 (mi.)           |
| Categorize the risk of this well / site being in a karst geology   | Low                            |
| A 100-year floodplain  | Greater than 5 (mi.)           |
| Did the release impact areas not on an exploration, development, production, or storage site                               | No                             |

**Remediation Plan**

Please answer all the questions that apply or are indicated. This information must be provided to the appropriate district office no later than 90 days after the release discovery date.

|  |            |
|--|------------|
| Requesting a remediation plan approval with this submission  | Yes        |
| Attach a comprehensive report demonstrating the lateral and vertical extents of soil contamination associated with the release have been determined, pursuant to 19.15.29.11 NMAC and 19.15.29.13 NMAC.  |            |
| Have the lateral and vertical extents of contamination been fully delineated   | Yes        |
| Was this release entirely contained within a lined containment area  | Yes        |
| Per Subsection B of 19.15.29.11 NMAC unless the site characterization report includes completed efforts at remediation, the report must include a proposed remediation plan in accordance with 19.15.29.12 NMAC, which includes the anticipated timelines for beginning and completing the remediation.  |            |
| On what estimated date will the remediation commence   | 08/15/2024 |
| On what date will (or did) the final sampling or liner inspection occur  | 08/29/2024 |
| On what date will (or was) the remediation complete(d)   | 08/15/2024 |
| What is the estimated surface area (in square feet) that will be remediated  | 13442      |
| What is the estimated volume (in cubic yards) that will be remediated  | 0          |
| These estimated dates and measurements are recognized to be the best guess or calculation at the time of submission and may (be) change(d) over time as more remediation efforts are completed.  |            |
| The OCD recognizes that proposed remediation measures may have to be minimally adjusted in accordance with the physical realities encountered during remediation. If the responsible party has any need to significantly deviate from the remediation plan proposed, then it should consult with the division to determine if another remediation plan submission is required. |            |

**District I**

1625 N. French Dr., Hobbs, NM 88240  
Phone:(575) 393-6161 Fax:(575) 393-0720

**District II**

811 S. First St., Artesia, NM 88210  
Phone:(575) 748-1283 Fax:(575) 748-9720

**District III**

1000 Rio Brazos Rd., Aztec, NM 87410  
Phone:(505) 334-6178 Fax:(505) 334-6170

**District IV**

1220 S. St Francis Dr., Santa Fe, NM 87505  
Phone:(505) 476-3470 Fax:(505) 476-3462

**State of New Mexico**  
**Energy, Minerals and Natural Resources**  
**Oil Conservation Division**  
**1220 S. St Francis Dr.**  
**Santa Fe, NM 87505**

QUESTIONS, Page 4

Action 382460

**QUESTIONS (continued)**

|   |                |   |
|---|----------------|---|
| Operator:<br>CIMAREX ENERGY CO.<br>6001 Deauville Blvd<br>Midland, TX 79706 | OGRID:         | 215099  |
|   | Action Number: | 382460  |
|   | Action Type:   | [C-141] Remediation Closure Request C-141 (C-141-v-Closure) |
|   |                |   |

**QUESTIONS**

|  |   |
|--|---|
| <b>Remediation Plan (continued)</b>  |   |
| <i>Please answer all the questions that apply or are indicated. This information must be provided to the appropriate district office no later than 90 days after the release discovery date.</i>   |   |
| <b>This remediation will (or is expected to) utilize the following processes to remediate / reduce contaminants:</b>   |   |
| <i>(Select all answers below that apply.)</i>  |   |
| Is (or was) there affected material present needing to be removed  | Yes   |
| Is (or was) there a power wash of the lined containment area (to be) performed   | Yes   |
| OTHER (Non-listed remedial process)  | No  |
| <i>Per Subsection B of 19.15.29.11 NMAC unless the site characterization report includes completed efforts at remediation, the report must include a proposed remediation plan in accordance with 19.15.29.12 NMAC, which includes the anticipated timelines for beginning and completing the remediation.</i>   |   |
| I hereby certify that the information given above is true and complete to the best of my knowledge and understand that pursuant to OCD rules and regulations all operators are required to report and/or file certain release notifications and perform corrective actions for releases which may endanger public health or the environment. The acceptance of a C-141 report by the OCD does not relieve the operator of liability should their operations have failed to adequately investigate and remediate contamination that pose a threat to groundwater, surface water, human health or the environment. In addition, OCD acceptance of a C-141 report does not relieve the operator of responsibility for compliance with any other federal, state, or local laws and/or regulations. |   |
| I hereby agree and sign off to the above statement   | Name: Laci Luig<br>Title: ES&H Specialist<br>Email: DL_PermianEnvironmental@coterra.com<br>Date: 09/11/2024 |
| <i>The OCD recognizes that proposed remediation measures may have to be minimally adjusted in accordance with the physical realities encountered during remediation. If the responsible party has any need to significantly deviate from the remediation plan proposed, then it should consult with the division to determine if another remediation plan submission is required.</i>  |   |

**District I**

1625 N. French Dr., Hobbs, NM 88240  
Phone:(575) 393-6161 Fax:(575) 393-0720

**District II**

811 S. First St., Artesia, NM 88210  
Phone:(575) 748-1283 Fax:(575) 748-9720

**District III**

1000 Rio Brazos Rd., Aztec, NM 87410  
Phone:(505) 334-6178 Fax:(505) 334-6170

**District IV**

1220 S. St Francis Dr., Santa Fe, NM 87505  
Phone:(505) 476-3470 Fax:(505) 476-3462

**State of New Mexico**  
**Energy, Minerals and Natural Resources**  
**Oil Conservation Division**  
**1220 S. St Francis Dr.**  
**Santa Fe, NM 87505**

QUESTIONS, Page 6

Action 382460

**QUESTIONS (continued)**

|   |                |   |
|---|----------------|---|
| Operator:<br>CIMAREX ENERGY CO.<br>6001 Deauville Blvd<br>Midland, TX 79706 | OGRID:         | 215099  |
|   | Action Number: | 382460  |
|   | Action Type:   | [C-141] Remediation Closure Request C-141 (C-141-v-Closure) |
|   |                |   |

**QUESTIONS**

|   |            |
|---|------------|
| <b>Liner Inspection Information</b>   |            |
| Last liner inspection notification (C-141L) recorded  | 378276     |
| Liner inspection date pursuant to Subparagraph (a) of Paragraph (5) of Subsection A of 19.15.29.11 NMAC | 08/29/2024 |
| Was all the impacted materials removed from the liner   | Yes        |
| What was the liner inspection surface area in square feet   | 13442      |

**Remediation Closure Request**

*Only answer the questions in this group if seeking remediation closure for this release because all remediation steps have been completed.*

|   |   |
|---|---|
| Requesting a remediation closure approval with this submission                  | Yes   |
| Have the lateral and vertical extents of contamination been fully delineated    | Yes   |
| Was this release entirely contained within a lined containment area             | Yes   |
| What was the total surface area (in square feet) remediated                     | 13446   |
| What was the total volume (cubic yards) remediated                              | 0   |
| Summarize any additional remediation activities not included by answers (above) | Lined containment was pressure washed to remove produced water from inside containment. |

*The responsible party must attach information demonstrating they have complied with all applicable closure requirements and any conditions or directives of the OCD. This demonstration should be in the form of a comprehensive report (in .pdf format) including a scaled site map, sampling diagrams, relevant field notes, photographs of any excavation prior to backfilling, laboratory data including chain of custody documents of final sampling, and a narrative of the remedial activities. Refer to 19.15.29.12 NMAC.*

I hereby certify that the information given above is true and complete to the best of my knowledge and understand that pursuant to OCD rules and regulations all operators are required to report and/or file certain release notifications and perform corrective actions for releases which may endanger public health or the environment. The acceptance of a C-141 report by the OCD does not relieve the operator of liability should their operations have failed to adequately investigate and remediate contamination that pose a threat to groundwater, surface water, human health or the environment. In addition, OCD acceptance of a C-141 report does not relieve the operator of responsibility for compliance with any other federal, state, or local laws and/or regulations. The responsible party acknowledges they must substantially restore, reclaim, and re-vegetate the impacted surface area to the conditions that existed prior to the release or their final land use in accordance with 19.15.29.13 NMAC including notification to the OCD when reclamation and re-vegetation are complete.

|  |   |
|--|---|
| I hereby agree and sign off to the above statement | Name: Laci Luig<br>Title: ES&H Specialist<br>Email: DL_PermianEnvironmental@coterra.com<br>Date: 09/11/2024 |
|--|---|

**District I**  
1625 N. French Dr., Hobbs, NM 88240  
Phone:(575) 393-6161 Fax:(575) 393-0720  
**District II**  
811 S. First St., Artesia, NM 88210  
Phone:(575) 748-1283 Fax:(575) 748-9720  
**District III**  
1000 Rio Brazos Rd., Aztec, NM 87410  
Phone:(505) 334-6178 Fax:(505) 334-6170  
**District IV**  
1220 S. St Francis Dr., Santa Fe, NM 87505  
Phone:(505) 476-3470 Fax:(505) 476-3462

**State of New Mexico**  
**Energy, Minerals and Natural Resources**  
**Oil Conservation Division**  
**1220 S. St Francis Dr.**  
**Santa Fe, NM 87505**

CONDITIONS  
  
Action 382460

CONDITIONS

|   |   |
|---|---|
| Operator:<br>CIMAREX ENERGY CO.<br>6001 Deauville Blvd<br>Midland, TX 79706 | OGRID:<br>215099  |
|   | Action Number:<br>382460  |
|   | Action Type:<br>[C-141] Remediation Closure Request C-141 (C-141-v-Closure) |

CONDITIONS

| Created By | Condition   | Condition Date |
|------------|---|----------------|
| rhamlet    | We have received your Remediation Closure Report for Incident #NAPP2422727571 TRES EQUIS STATE 2H-6H CTB, thank you. This Remediation Closure Report is approved. | 10/1/2024      |