

CARMONA RESOURCES



SITE INFORMATION

Closure Report
Baseball Cap 25P CTB
Lea County, New Mexico
Unit P Sec 25 T24S R34E
32.18370278°, -103.41741667°
Incident Number: NAPP2425452465

Crude Oil & Produced Water Release
Point of Release: Equipment Failure
Release Date: 09.09.2024

Volume Released: 58.5 barrels of Cude Oil & 10.3 barrels of Produced Water
Volume Recovered: 58.5 barrels of Cude Oil & 10.3 barrels of Produced Water

CARMONA RESOURCES



Prepared for:
Concho Operating, LLC
600 West Illinois Avenue
Midland, Texas 79701

Prepared by:
Carmona Resources, LLC
310 West Wall Street
Suite 500
Midland, Texas 79701

310 West Wall Street, Suite 500
Midland TX, 79701
432.813.1992



TABLE OF CONTENTS

1.0 SITE INFORMATION AND BACKGROUND

2.0 SITE CHARACTERIZATION AND GROUNDWATER

3.0 NMAC REGULATORY CRITERIA

4.0 LINER INSPECTION ACTIVITIES

5.0 CONCLUSIONS

FIGURES

FIGURE 1	OVERVIEW	FIGURE 2	TOPOGRAPHIC
FIGURE 3	SECONDARY CONTAINMENT		

APPENDICES

APPENDIX A	PHOTOS
APPENDIX B	N.O.R AND FINAL C-141/NMOCD CORRESPONDENCE
APPENDIX C	SITE CHARACTERIZATION AND GROUNDWATER

October 7, 2024

Concho Operating, LLC
600 West Illinois Avenue
Midland, Texas 79701

**Re: Summary Report
Baseball Cap 25P CTB (09.09.24)
Concho Operating, LLC
Site Location: Unit P, S25, T24S, R34E
(Lat 32.18370278°, Long -103.41741667°)
Lea County, New Mexico**

To whom it may concern:

On behalf of Concho Operating, LLC (COG), Carmona Resources, LLC has prepared this letter to document site activities for Baseball Cap 25P CTB (09.09.24). The site is located at 32.18370278°, -103.41741667° within Unit P, S25, T24S, R34E, in Lea County, New Mexico (Figures 1 and 2).

1.0 Site Information and Background

Based on the information obtained from the client, the release was discovered on September 09, 2024, due to equipment failure. It resulted in approximately fifty eight point five (58.5) barrels of crude oil and ten point three (10.3) barrels of produced water being released, and fifty eight point five (58.5) barrels of crude oil and ten point three (10.3) barrels of produced water being recovered. See Figure 3.

2.0 Site Characterization and Groundwater

The site is located within a low karst area. Based on a review of the New Mexico Office of State Engineers and USGS databases, one known water source within a 0.50-mile radius of the location. The closest well is located approximately 0.43 miles North of the site in S25, T24S, R34E and was drilled in 2023. The well has a reported depth to groundwater of 180 feet below ground surface (ft bgs). A copy of the associated point of diversion is attached in Appendix C.

3.0 Site Characterization and Groundwater

Per the NMOCD regulatory criteria established in 19.15.29.12 NMAC, the following criteria were utilized in assessing the site.

- Benzene: 10 milligrams per kilogram (mg/kg).
- Benzene, toluene, ethylbenzene, and total xylenes (BTEX): 50 mg/kg.
- TPH: 2,500 mg/kg (GRO + DRO + MRO).
- TPH: 1,000 mg/kg (GRO + DRO).
- Chloride: 20,000 mg/kg.



4.0 Liner Inspection Activities

Before conducting the liner inspection, the NMOCD was notified via the portal on September 25, 2024. A crew arrived on site to remove all freestanding fluids. After the plastic liner was thoroughly cleaned, Carmona Resources personnel inspected the liner to assess its structural integrity. On September 30, 2024, Carmona Resources, LLC carried out liner inspection activities and confirmed that the liner was intact with no integrity issues. Refer to the Photolog for details.

5.0 Conclusions

Based on the liner inspection throughout the facility, no further actions are required at the site. If you have any questions regarding this report or need additional information, don't hesitate to contact us at 432-813-1992.

Sincerely,

Carmona Resources, LLC

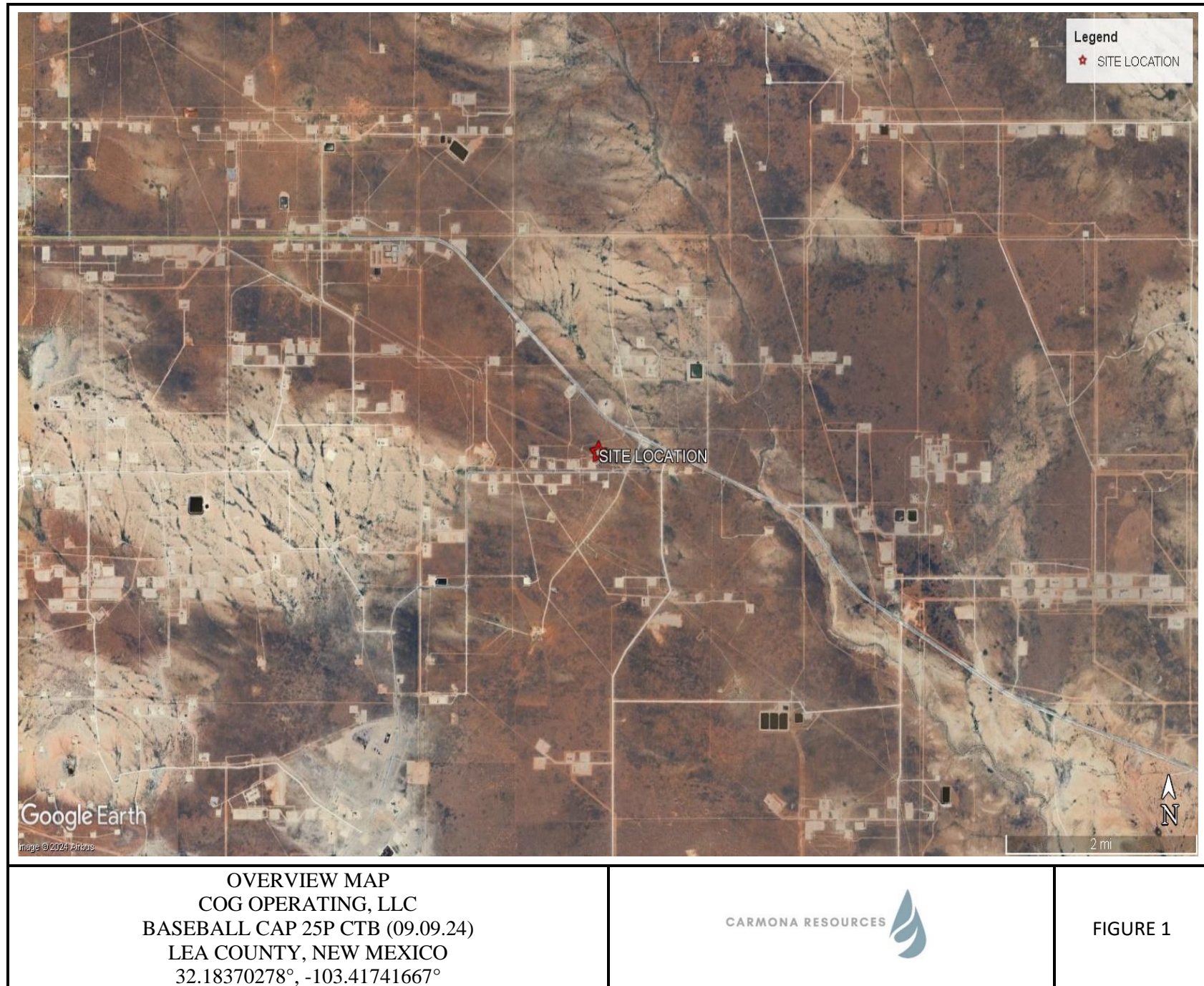
Mike Carmona
Environmental Manager

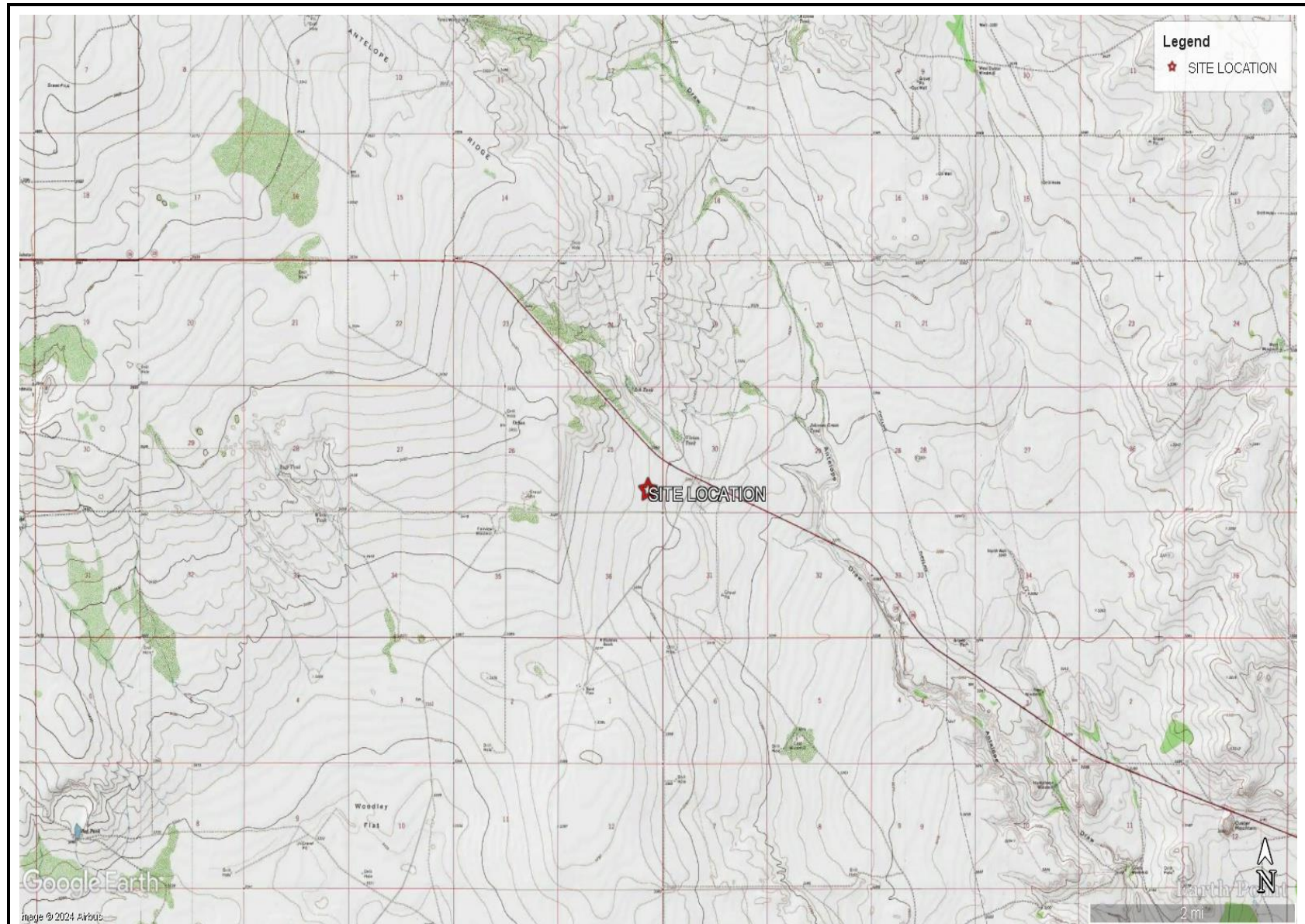
Conner Moehring
Sr. Project Manager

FIGURES

CARMONA RESOURCES







TOPOGRAPHIC MAP
COG OPERATING, LLC
BASEBALL CAP 25P CTB (09.09.24)
LEA COUNTY, NEW MEXICO
32.18370278°, -103.41741667°



FIGURE 2



APPENDIX A

CARMONA RESOURCES



PHOTOGRAPHIC LOG

COG Operating, LLC

Photograph No. 1

Facility: Baseball Cap 25P CTB (09.09.24)

County: Lea County, New Mexico

Description:

View West of cleaned liner during liner inspection.



Photograph No. 2

Facility: Baseball Cap 25P CTB (09.09.24)

County: Lea County, New Mexico

Description:

View East of cleaned liner during liner inspection.



Photograph No. 3

Facility: Baseball Cap 25P CTB (09.09.24)

County: Lea County, New Mexico

Description:

View North of cleaned liner during liner inspection.



PHOTOGRAPHIC LOG

COG Operating, LLC

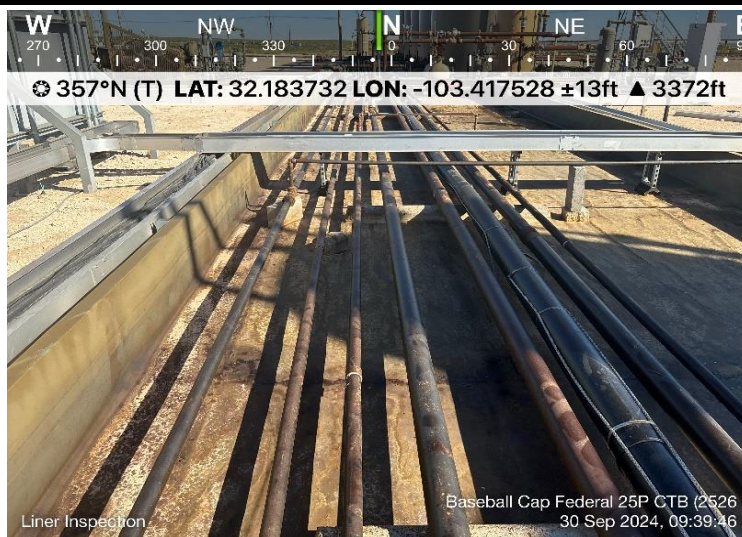
Photograph No. 4

Facility: Baseball Cap 25P CTB (09.09.24)

County: Lea County, New Mexico

Description:

View North of cleaned liner during liner inspection.



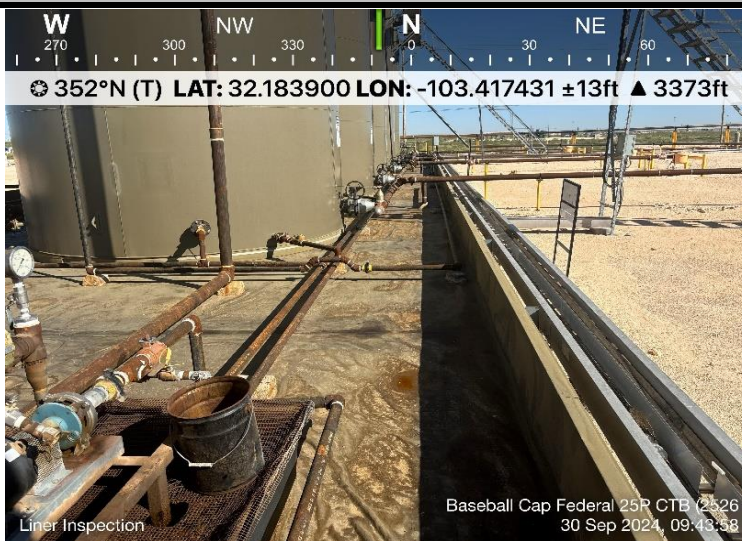
Photograph No. 5

Facility: Baseball Cap 25P CTB (09.09.24)

County: Lea County, New Mexico

Description:

View North of cleaned liner during liner inspection.



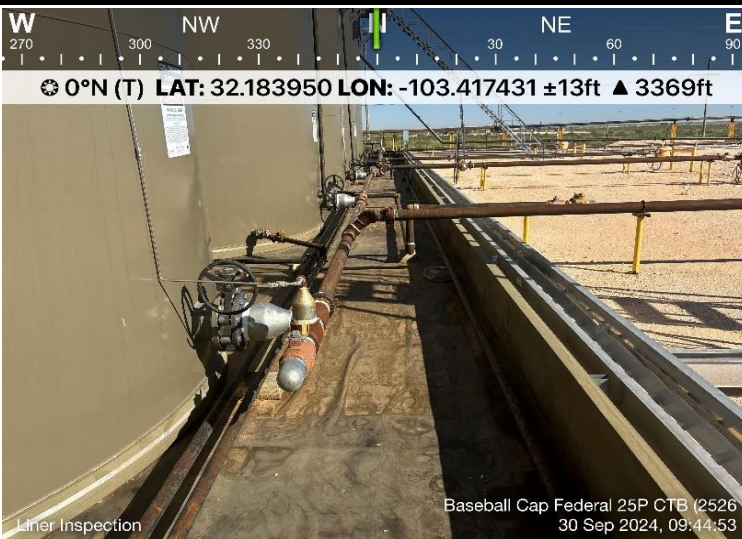
Photograph No. 6

Facility: Baseball Cap 25P CTB (09.09.24)

County: Lea County, New Mexico

Description:

View North of cleaned liner during liner inspection.



PHOTOGRAPHIC LOG

COG Operating, LLC

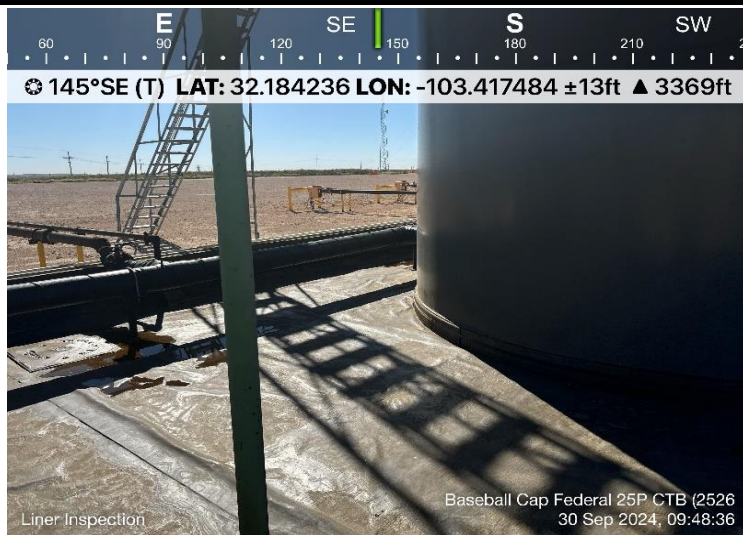
Photograph No. 7

Facility: Baseball Cap 25P CTB (09.09.24)

County: Lea County, New Mexico

Description:

View Southeast of cleaned liner during liner inspection.



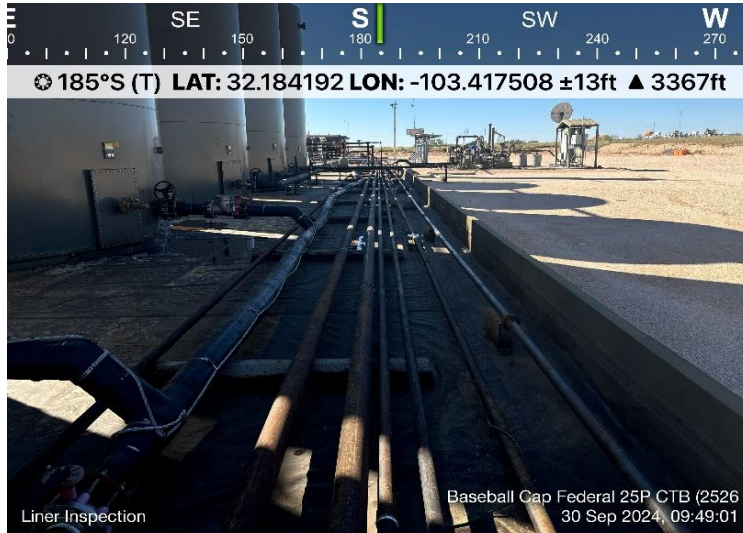
Photograph No. 8

Facility: Baseball Cap 25P CTB (09.09.24)

County: Lea County, New Mexico

Description:

View South of cleaned liner during liner inspection.



Photograph No. 9

Facility: Baseball Cap 25P CTB (09.09.24)

County: Lea County, New Mexico

Description:

View Southeast of cleaned liner during liner inspection.



APPENDIX B

CARMONA RESOURCES



District I
1625 N. French Dr., Hobbs, NM 88240
Phone:(575) 393-6161 Fax:(575) 393-0720
District II
811 S. First St., Artesia, NM 88210
Phone:(575) 748-1283 Fax:(575) 748-9720
District III
1000 Rio Brazos Rd., Aztec, NM 87410
Phone:(505) 334-6178 Fax:(505) 334-6170
District IV
1220 S. St Francis Dr., Santa Fe, NM 87505
Phone:(505) 476-3470 Fax:(505) 476-3462

State of New Mexico
Energy, Minerals and Natural Resources
Oil Conservation Division
1220 S. St Francis Dr.
Santa Fe, NM 87505

QUESTIONS

Action 383024

QUESTIONS

Operator: COG OPERATING LLC 600 W Illinois Ave Midland, TX 79701	OGRID: 229137
	Action Number: 383024
	Action Type: [C-141] Initial C-141 (C-141-v-Initial)

QUESTIONS

Prerequisites	
Incident ID (n#)	nAPP2425452465
Incident Name	NAPP2425452465 BASEBALL CAP 25P @ 0
Incident Type	Release Other
Incident Status	Initial C-141 Received
Incident Facility	[fAPP2129337175] Baseball Cap 25P-BATTERY

Location of Release Source	
Please answer all the questions in this group.	
Site Name	Baseball Cap 25P
Date Release Discovered	09/09/2024
Surface Owner	Private

Incident Details	
Please answer all the questions in this group.	
Incident Type	Release Other
Did this release result in a fire or is the result of a fire	No
Did this release result in any injuries	No
Has this release reached or does it have a reasonable probability of reaching a watercourse	No
Has this release endangered or does it have a reasonable probability of endangering public health	No
Has this release substantially damaged or will it substantially damage property or the environment	No
Is this release of a volume that is or may with reasonable probability be detrimental to fresh water	No

Nature and Volume of Release	
Material(s) released, please answer all that apply below. Any calculations or specific justifications for the volumes provided should be attached to the follow-up C-141 submission.	
Crude Oil Released (bbls) Details	Cause: Equipment Failure Other (Specify) Crude Oil Released: 59 BBL Recovered: 58 BBL Lost: 1 BBL.
Produced Water Released (bbls) Details	Cause: Equipment Failure Other (Specify) Produced Water Released: 10 BBL Recovered: 10 BBL Lost: 0 BBL.
Is the concentration of chloride in the produced water >10,000 mg/l	Yes
Condensate Released (bbls) Details	Not answered.
Natural Gas Vented (Mcf) Details	Not answered.
Natural Gas Flared (Mcf) Details	Not answered.
Other Released Details	Not answered.
Are there additional details for the questions above (i.e. any answer containing Other, Specify, Unknown, and/or Fire, or any negative lost amounts)	Not answered.

District I
1625 N. French Dr., Hobbs, NM 88240
Phone:(575) 393-6161 Fax:(575) 393-0720

District II
811 S. First St., Artesia, NM 88210
Phone:(575) 748-1283 Fax:(575) 748-9720

District III
1000 Rio Brazos Rd., Aztec, NM 87410
Phone:(505) 334-6178 Fax:(505) 334-6170

District IV
1220 S. St Francis Dr., Santa Fe, NM 87505
Phone:(505) 476-3470 Fax:(505) 476-3462

State of New Mexico
Energy, Minerals and Natural Resources
Oil Conservation Division
1220 S. St Francis Dr.
Santa Fe, NM 87505

QUESTIONS, Page 2

Action 383024

QUESTIONS (continued)

Operator: COG OPERATING LLC 600 W Illinois Ave Midland, TX 79701	OGRID: 229137
	Action Number: 383024
	Action Type: [C-141] Initial C-141 (C-141-v-Initial)

QUESTIONS

Nature and Volume of Release (continued)	
Is this a gas only submission (i.e. only significant Mcf values reported)	No, according to supplied volumes this does not appear to be a "gas only" report.
Was this a major release as defined by Subsection A of 19.15.29.7 NMAC	Yes
Reasons why this would be considered a submission for a notification of a major release	From paragraph A. "Major release" determine using: (1) an unauthorized release of a volume, excluding gases, of 25 barrels or more.
With the implementation of the 19.15.27 NMAC (05/25/2021), venting and/or flaring of natural gas (i.e. gas only) are to be submitted on the C-129 form.	

Initial Response

The responsible party must undertake the following actions immediately unless they could create a safety hazard that would result in injury.

The source of the release has been stopped	True
The impacted area has been secured to protect human health and the environment	True
Released materials have been contained via the use of berms or dikes, absorbent pads, or other containment devices	True
All free liquids and recoverable materials have been removed and managed appropriately	True
If all the actions described above have not been undertaken, explain why	Not answered.

Per Paragraph (4) of Subsection B of 19.15.29.8 NMAC the responsible party may commence remediation immediately after discovery of a release. If remediation has begun, please prepare and attach a narrative of actions to date in the follow-up C-141 submission. If remedial efforts have been successfully completed or if the release occurred within a lined containment area (see Subparagraph (a) of Paragraph (5) of Subsection A of 19.15.29.11 NMAC), please prepare and attach all information needed for closure evaluation in the follow-up C-141 submission.

I hereby certify that the information given above is true and complete to the best of my knowledge and understand that pursuant to OCD rules and regulations all operators are required to report and/or file certain release notifications and perform corrective actions for releases which may endanger public health or the environment. The acceptance of a C-141 report by the OCD does not relieve the operator of liability should their operations have failed to adequately investigate and remediate contamination that pose a threat to groundwater, surface water, human health or the environment. In addition, OCD acceptance of a C-141 report does not relieve the operator of responsibility for compliance with any other federal, state, or local laws and/or regulations.

I hereby agree and sign off to the above statement	Name: Brittany Esparza Title: Environmental Technician Email: brittany.Esparza@ConocoPhillips.com Date: 09/12/2024
--	---

District I

1625 N. French Dr., Hobbs, NM 88240
Phone:(575) 393-6161 Fax:(575) 393-0720

District II

811 S. First St., Artesia, NM 88210
Phone:(575) 748-1283 Fax:(575) 748-9720

District III

1000 Rio Brazos Rd., Aztec, NM 87410
Phone:(505) 334-6178 Fax:(505) 334-6170

District IV

1220 S. St Francis Dr., Santa Fe, NM 87505
Phone:(505) 476-3470 Fax:(505) 476-3462

State of New Mexico
Energy, Minerals and Natural Resources
Oil Conservation Division
1220 S. St Francis Dr.
Santa Fe, NM 87505

QUESTIONS, Page 3

Action 383024

QUESTIONS (continued)

Operator: COG OPERATING LLC 600 W Illinois Ave Midland, TX 79701	OGRID: 229137
	Action Number: 383024
	Action Type: [C-141] Initial C-141 (C-141-v-Initial)

QUESTIONS**Site Characterization**

Please answer all the questions in this group (only required when seeking remediation plan approval and beyond). This information must be provided to the appropriate district office no later than 90 days after the release discovery date.

What is the shallowest depth to groundwater beneath the area affected by the release in feet below ground surface (ft bgs)	Not answered.
What method was used to determine the depth to ground water	Not answered.
Did this release impact groundwater or surface water	Not answered.
What is the minimum distance, between the closest lateral extents of the release and the following surface areas:	
A continuously flowing watercourse or any other significant watercourse	Not answered.
Any lakebed, sinkhole, or playa lake (measured from the ordinary high-water mark)	Not answered.
An occupied permanent residence, school, hospital, institution, or church	Not answered.
A spring or a private domestic fresh water well used by less than five households for domestic or stock watering purposes	Not answered.
Any other fresh water well or spring	Not answered.
Incorporated municipal boundaries or a defined municipal fresh water well field	Not answered.
A wetland	Not answered.
A subsurface mine	Not answered.
An (non-karst) unstable area	Not answered.
Categorize the risk of this well / site being in a karst geology	Not answered.
A 100-year floodplain	Not answered.
Did the release impact areas not on an exploration, development, production, or storage site	Not answered.

Remediation Plan

Please answer all the questions that apply or are indicated. This information must be provided to the appropriate district office no later than 90 days after the release discovery date.

Requesting a remediation plan approval with this submission	No
The OCD recognizes that proposed remediation measures may have to be minimally adjusted in accordance with the physical realities encountered during remediation. If the responsible party has any need to significantly deviate from the remediation plan proposed, then it should consult with the division to determine if another remediation plan submission is required.	

District I
1625 N. French Dr., Hobbs, NM 88240
Phone:(575) 393-6161 Fax:(575) 393-0720

District II
811 S. First St., Artesia, NM 88210
Phone:(575) 748-1283 Fax:(575) 748-9720

District III
1000 Rio Brazos Rd., Aztec, NM 87410
Phone:(505) 334-6178 Fax:(505) 334-6170

District IV
1220 S. St Francis Dr., Santa Fe, NM 87505
Phone:(505) 476-3470 Fax:(505) 476-3462

State of New Mexico
Energy, Minerals and Natural Resources
Oil Conservation Division
1220 S. St Francis Dr.
Santa Fe, NM 87505

CONDITIONS

Action 383024

CONDITIONS

Operator: COG OPERATING LLC 600 W Illinois Ave Midland, TX 79701	OGRID: 229137
	Action Number: 383024
	Action Type: [C-141] Initial C-141 (C-141-v-Initial)

CONDITIONS

Created By	Condition	Condition Date
rhamlet	None	9/13/2024

Received by OCD: 10/10/2024 9:07:10 AM				Spill Calculation - On-Pad Surface Pool Spill						Page 18 of 41
Convert Irregular shape into a series of rectangles	Length (ft.)	Width (ft.)	Average Depth (in.)	Estimated <u>Pool</u> Area (sq. ft.)	Estimated volume of each pool area (bbl.)	Penetration allowance (ft.)	Total Estimated Volume of Spill (bbl.)	Percentage of Oil if Spilled Fluid is a Mixture (%)	Total Estimated Volume of Spilled Oil (bbl.)	Total Estimated Volume of Spilled Liquid other than Oil (bbl.)
Rectangle A	18	36	0.5	648.00	4.81	0.00	4.82	85%	4.09	0.72
Rectangle B	30	48	0.5	1440.00	10.68	0.00	10.70		9.10	1.61
Rectangle C	29	18	0.8	522.00	5.81	0.00	5.83		4.95	0.87
Rectangle D	28	18	0.5	504.00	3.74	0.00	3.75		3.18	0.56
Rectangle E	21	21	0.5	441.00	3.27	0.00	3.28		2.79	0.49
Rectangle F	45	66	1.0	2970.00	44.06	0.00	44.24		37.60	6.64
Rectangle G				0.00	0.00	0.00	0.00		0.00	0.00
Rectangle H				0.00	0.00	0.00	0.00		0.00	0.00
Rectangle I				0.00	0.00	0.00	0.00		0.00	0.00
Rectangle J				0.00	0.00	0.00	0.00		0.00	0.00
Released to Imaging: 11/4/2024 9:49:16 AM							Total Volume Release, Soil not impacted:	68.9753	58.6290	10.3463

District I
1625 N. French Dr., Hobbs, NM 88240
Phone:(575) 393-6161 Fax:(575) 393-0720
District II
811 S. First St., Artesia, NM 88210
Phone:(575) 748-1283 Fax:(575) 748-9720
District III
1000 Rio Brazos Rd., Aztec, NM 87410
Phone:(505) 334-6178 Fax:(505) 334-6170
District IV
1220 S. St Francis Dr., Santa Fe, NM 87505
Phone:(505) 476-3470 Fax:(505) 476-3462

State of New Mexico
Energy, Minerals and Natural Resources
Oil Conservation Division
1220 S. St Francis Dr.
Santa Fe, NM 87505

QUESTIONS

Action 386866

QUESTIONS

Operator: COG OPERATING LLC 600 W Illinois Ave Midland, TX 79701	OGRID: 229137
	Action Number: 386866
	Action Type: [NOTIFY] Notification Of Liner Inspection (C-141L)

QUESTIONS

Prerequisites	
Incident ID (n#)	nAPP2425452465
Incident Name	NAPP2425452465 BASEBALL CAP 25P @ 0
Incident Type	Release Other
Incident Status	Initial C-141 Approved
Incident Facility	[fAPP2129337175] Baseball Cap 25P-BATTERY

Location of Release Source	
Site Name	Baseball Cap 25P
Date Release Discovered	09/09/2024
Surface Owner	Private

Liner Inspection Event Information	
Please answer all the questions in this group.	
What is the liner inspection surface area in square feet	4,950
Have all the impacted materials been removed from the liner	Yes
Liner inspection date pursuant to Subparagraph (a) of Paragraph (5) of Subsection A of 19.15.29.11 NMAC	09/30/2024
Time liner inspection will commence	09:00 AM
Please provide any information necessary for observers to liner inspection	Conner Moerhring (432) 813-6823
Please provide any information necessary for navigation to liner inspection site	32.184072, -103.417481

District I
1625 N. French Dr., Hobbs, NM 88240
Phone:(575) 393-6161 Fax:(575) 393-0720
District II
811 S. First St., Artesia, NM 88210
Phone:(575) 748-1283 Fax:(575) 748-9720
District III
1000 Rio Brazos Rd., Aztec, NM 87410
Phone:(505) 334-6178 Fax:(505) 334-6170
District IV
1220 S. St Francis Dr., Santa Fe, NM 87505
Phone:(505) 476-3470 Fax:(505) 476-3462

State of New Mexico
Energy, Minerals and Natural Resources
Oil Conservation Division
1220 S. St Francis Dr.
Santa Fe, NM 87505

CONDITIONS

Action 386866

CONDITIONS

Operator: COG OPERATING LLC 600 W Illinois Ave Midland, TX 79701	OGRID: 229137
	Action Number: 386866
	Action Type: [NOTIFY] Notification Of Liner Inspection (C-141L)

CONDITIONS

Created By	Condition	Condition Date
jlaire	Failure to notify the OCD of liner inspections including any changes in date/time per the requirements of 19.15.29.11.A(5)(a)(ii) NMAC, may result in the inspection not being accepted.	9/25/2024

APPENDIX C

CARMONA RESOURCES



Nearest water well

COG Operating

Legend

0.43 Miles

0.50 Mile Radius

0.66 Miles

1.27 Miles

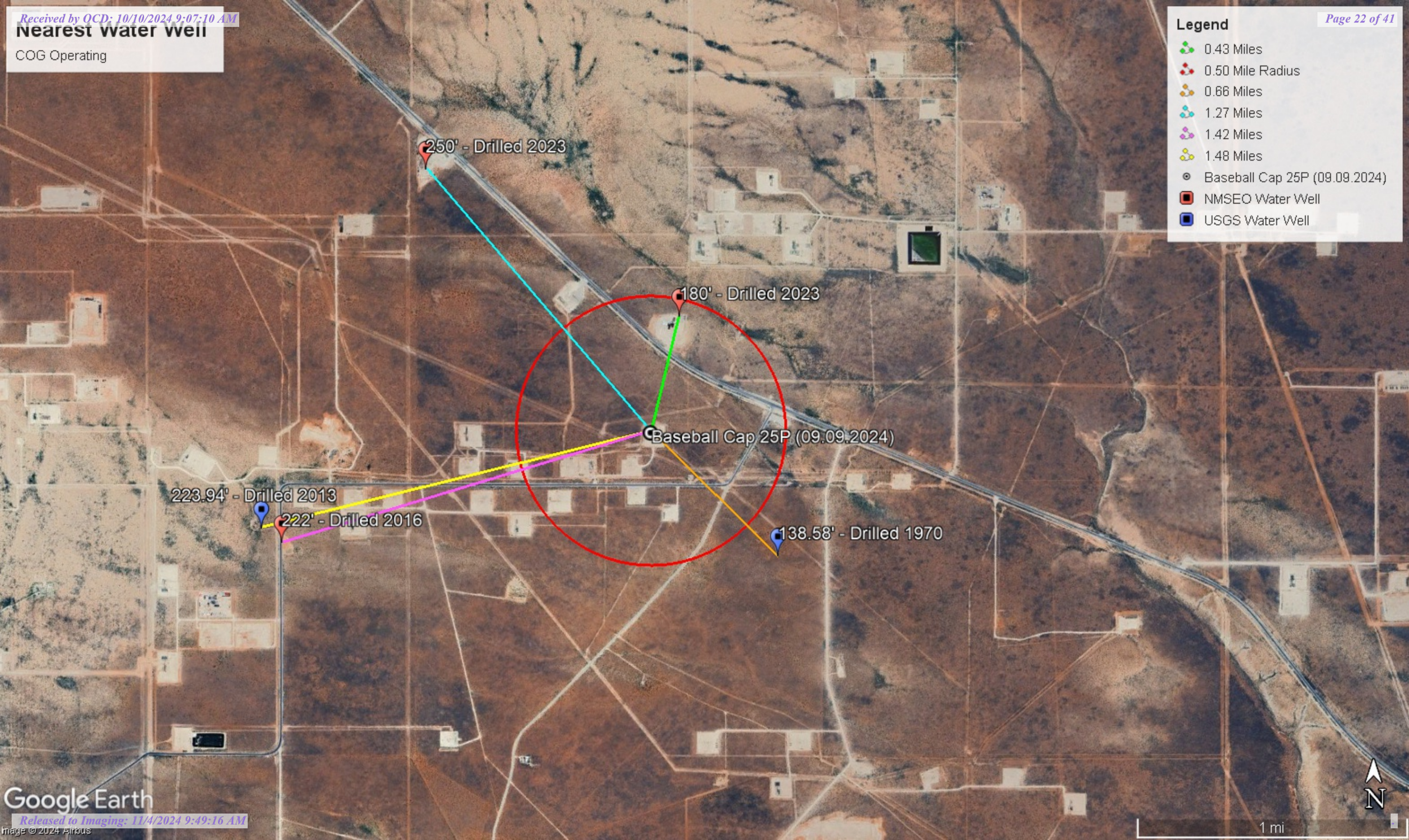
1.42 Miles

1.48 Miles

Baseball Cap 25P (09.09.2024)

NMSEO Water Well

USGS Water Well



Low Karst

COG Operating

Legend

- Baseball Cap 25P (09.09.2024)
- Low

Baseball Cap 25P (09.09.2024)





New Mexico Office of the State Engineer

Water Column/Average Depth to Water

(A CLW##### in the POD suffix indicates the POD has been replaced & no longer serves a water right file.)

(R=POD has been replaced, O=orphaned, C=the file is closed)

(quarters are 1=NW 2=NE 3=SW 4=SE)

(quarters are smallest to largest)

(NAD83 UTM in meters)

(In feet)

POD Number	POD Sub-Code	basin	County	Q 64	Q 16	Q 4	Sec	Tws	Rng	X	Y	Distance	Depth Well	Depth Water	Water Column
C 04682	C	LE		4	4	2	25	24S	34E	649349	3562621	700	290	180	110
C 04042 POD1	CUB	LE		2	1	4	36	24S	34E	648539	3561545	763			
CP 00839 POD1	CP	LE			4	3	30	24S	35E	650017	3561833*	830	175		
C 02401	CUB	LE		2	2	1	01	25S	34E	648534	3559896*	2146	275	260	15
C 03942 POD1	CUB	LE		3	1	2	35	24S	34E	647005	3561246	2295	420	222	198
C 02388	CUB	LE				3	05	25S	35E	651467	3558832*	3850	180	165	15

Average Depth to Water: **206 feet**

Minimum Depth: **165 feet**

Maximum Depth: **260 feet**

Record Count: 6

UTM NAD83 Radius Search (in meters):

Easting (X): 649193

Northing (Y): 3561939

Radius: 4000

*UTM location was derived from PLSS - see Help

The data is furnished by the NMOSE/ISC and is accepted by the recipient with the expressed understanding that the OSE/ISC make no warranties, expressed or implied, concerning the accuracy, completeness, reliability, usability, or suitability for any particular purpose of the data.

6/5/23 11:50 AM


Page 1 of 1

WATER COLUMN/ AVERAGE
DEPTH TO WATER



New Mexico Office of the State Engineer

Point of Diversion Summary

		(quarters are 1=NW 2=NE 3=SW 4=SE)				(quarters are smallest to largest)				(NAD83 UTM in meters)	
Well Tag	POD Number	Q64	Q16	Q4	Sec	Tws	Rng	X	Y		
NA	C 04682	4	4	2	25	24S	34E	649349	3562621		
<hr/>											
Driller License:		1058		Driller Company:			KEY'S DRILLING & PUMP SERVICE				
Driller Name:		GARY KEY									
Drill Start Date:		12/20/2022		Drill Finish Date:			01/18/2023		Plug Date:		01/18/2023
Log File Date:		02/08/2023		PCW Rcv Date:					Source:		Shallow
Pump Type:					Pipe Discharge Size:					Estimated Yield: 3 GPM	
Casing Size:		4.50		Depth Well:			290 feet		Depth Water:		180 feet
<hr/>											
Water Bearing Stratifications:				Top	Bottom	Description					
				157	270	Sandstone/Gravel/Conglomerate					
<hr/>											
Casing Perforations:				Top	Bottom						
				160	290						
<hr/>											

The data is furnished by the NMOSE/ISC and is accepted by the recipient with the expressed understanding that the OSE/ISC make no warranties, expressed or implied, concerning the accuracy, completeness, reliability, usability, or suitability for any particular purpose of the data.

4/17/24 1:20 PM

POINT OF DIVERSION SUMMARY



USGS Home
Contact USGS
Search USGS

National Water Information System: Web Interface

USGS Water Resources

Data Category:
Groundwater

Geographic Area:
New Mexico

GO

Click to hideNews Bulletins

- Explore the NEW [USGS National Water Dashboard](#) interactive map to access real-time water data from over 13,500 stations nationwide.
- [Full News](#)

Groundwater levels for New Mexico

Click to hide state-specific text

Important: [Next Generation Monitoring Location Page](#)

Search Results -- 1 sites found

Agency code = usgs
site_no list =

- 321039103243401

Minimum number of levels = 1
[Save file of selected sites](#) to local disk for future upload

USGS 321039103243401 24S.35E.30.34233

Lea County, New Mexico
Latitude 32°10'39", Longitude 103°24'34" NAD27
Land-surface elevation 3,343 feet above NAVD88
The depth of the well is 176 feet below land surface.
This well is completed in the Other aquifers (N9999OTHER) national aquifer.
This well is completed in the Chinle Formation (231CHNL) local aquifer.

Output formats

Table of data
Tab-separated data
Graph of data
Reselect period

Date	Time	? Water-level date-time accuracy	? Parameter code	Water level, feet below land surface	Water level, feet above specific vertical datum	Referenced vertical datum	? Status	? Method of measurement	? Measuring agency	? Source of measur
1953-11-27			D 62610		3201.89	NGVD29	1		Z	
1953-11-27			D 62611		3203.44	NAVD88	1		Z	
1953-11-27			D 72019	139.56			1		Z	
1965-11-02			D 62610		3200.46	NGVD29	1		Z	
1965-11-02			D 62611		3202.01	NAVD88	1		Z	
1965-11-02			D 72019	140.99			1		Z	
1968-06-12			D 62610		3200.93	NGVD29	1		Z	
1968-06-12			D 62611		3202.48	NAVD88	1		Z	
1968-06-12			D 72019	140.52			1		Z	
1970-12-08			D 62610		3202.87	NGVD29	1		Z	
1970-12-08			D 62611		3204.42	NAVD88	1		Z	
1970-12-08			D 72019	138.58			1		Z	

Explanation

Section	Code	Description
Water-level date-time accuracy	D	Date is accurate to the Day
Parameter code	62610	Groundwater level above NGVD 1929, feet
Parameter code	62611	Groundwater level above NAVD 1988, feet
Parameter code	72019	Depth to water level, feet below land surface
Referenced vertical datum	NAVD88	North American Vertical Datum of 1988
Referenced vertical datum	NGVD29	National Geodetic Vertical Datum of 1929
Status	1	Static
Method of measurement	Z	Other.
Measuring agency		Not determined
Source of measurement		Not determined
Water-level approval status	A	Approved for publication -- Processing and review completed.

[Questions or Comments](#)
[Automated retrievals](#)
[Help](#)
[Data Tips](#)
[Explanation of terms](#)
[Subscribe for system changes](#)
[News](#)

[Accessibility](#) [FOIA](#) [Privacy](#) [Policies and Notices](#)
[U.S. Department of the Interior](#) | [U.S. Geological Survey](#)
Title: Groundwater for New Mexico: Water Levels
URL: <https://nwis.waterdata.usgs.gov/nm/nwis/gwlevels?>



Page Contact Information: [New Mexico Water Data Maintainer](#)
Page Last Modified: 2024-01-29 14:57:44 EST
0.36 0.31 nadww01



WELL RECORD & LOG

OFFICE OF THE STATE ENGINEER

www.ose.state.nm.us

OSE DT JUN 30 2023 PM 2:15

1. GENERAL AND WELL LOCATION	OSE POD NO. (WELL NO.) POD1		WELL TAG ID NO. MW-1		OSE FILE NO(S). C-4737			
	WELL OWNER NAME(S) NGL Waste Services				PHONE (OPTIONAL)			
	WELL OWNER MAILING ADDRESS 1008 Southview Circle				CITY Center	STATE TX	ZIP 75935	
	WELL LOCATION (FROM GPS)	DEGREES LATITUDE 32	MINUTES 11	SECONDS 53.12	N	* ACCURACY REQUIRED: ONE TENTH OF A SECOND		
		LONGITUDE -103	25	53.91	W	* DATUM REQUIRED: WGS 84		
DESCRIPTION RELATING WELL LOCATION TO STREET ADDRESS AND COMMON LANDMARKS - PLSS (SECTION, TOWNSHIP, RANGE) WHERE AVAILABLE From the intersection of County Rd. B and NM-128, travel E-SE on NM-128 ~2.4mi. Well located ~596' SW of NM-128								
2. DRILLING & CASING INFORMATION	LICENSE NO. NM-1800		NAME OF LICENSED DRILLER Jarod M Michalsky			NAME OF WELL DRILLING COMPANY Talon/LPE, Ltd.		
	DRILLING STARTED 4/25/23	DRILLING ENDED 4/28/23	DEPTH OF COMPLETED WELL (FT) 250	BORE HOLE DEPTH (FT) 251	DEPTH WATER FIRST ENCOUNTERED (FT) N/A			
	COMPLETED WELL IS: <input type="checkbox"/> ARTESIAN *add Centralizer info below <input checked="" type="checkbox"/> DRY HOLE <input type="checkbox"/> SHALLOW (UNCONFINED)				STATIC WATER LEVEL IN COMPLETED WELL (FT) N/A	DATE STATIC MEASURED N/A		
	DRILLING FLUID: <input checked="" type="checkbox"/> AIR <input type="checkbox"/> MUD ADDITIVES - SPECIFY:							
	DRILLING METHOD: <input checked="" type="checkbox"/> ROTARY <input type="checkbox"/> HAMMER <input type="checkbox"/> CABLE TOOL <input type="checkbox"/> OTHER - SPECIFY:					CHECK HERE IF PITLESS ADAPTER IS INSTALLED <input type="checkbox"/>		
	DEPTH (feet bgl)		BORE HOLE DIAM. (inches)	CASING MATERIAL AND/OR GRADE (include each casing string, and note sections of screen)	CASING CONNECTION TYPE (add coupling diameter)	CASING INSIDE DIAM. (inches)	CASING WALL THICKNESS (inches)	SLOT SIZE (inches)
	FROM	TO						
	0	210	8	Sch 80 PVC	Riser	4	0.5	-
	210	250	8	Sch 80 PVC	Screen	4	0.5	0.020
3. ANNULAR MATERIAL	DEPTH (feet bgl)		BORE HOLE DIAM. (inches)	LIST ANNULAR SEAL MATERIAL AND GRAVEL PACK SIZE-RANGE BY INTERVAL <i>*(if using Centralizers for Artesian wells- indicate the spacing below)</i>	AMOUNT (cubic feet)	METHOD OF PLACEMENT		
	FROM	TO						
	0	2	8	Portland Cement	0.13	Tremie		
	2	195	8	3/8 Bentonite Pellets	12.89	Tremie		
	195	251	8	8/16 Silica Sand	3.74	Tremie		

FOR OSE INTERNAL USE

WR-20 WELL RECORD & LOG (Version 09/22/2022)

FILE NO. C-4737-POD 1	POD NO. 1	TRN NO. 745751
LOCATION Mon 24.34.24.133	WELL TAG ID NO. ---	PAGE 1 OF 2

DEPTH (feet bgl)	THICKNESS (feet)		COLOR AND TYPE OF MATERIAL ENCOUNTERED - INCLUDE WATER-BEARING CAVITIES OR FRACTURE ZONES (attach supplemental sheets to fully describe all units)	WATER BEARING? (YES / NO)	ESTIMATED YIELD FOR WATER-BEARING ZONES (gpm)
	FROM	TO			
0	10	10	SM: Sandy Silt, 20% Fine Grained Sand, 80% Silt, Dry, 7.5YR 8/3, No Odor	Y ✓ N	
10	15	5	SM-SW: Fine, 15% Silt, 45% Sand, 40% pebbles, Dry, 7.5YR 8/4, No Odor	Y ✓ N	
15	20	5	SW: Fine Grained Sand, Dry, 2.5YR 6/6, No Odor	Y ✓ N	
20	45	25	SM: Sandy Silt, 10-20% Fine Sand, 20-80% Silt, Dry, 2.5-5YR 4-5/4, No Odor	Y ✓ N	
45	55	10	SM: Sandy Silt, 10% Fine Grained Sand, 90% Silt, Dry, 10YR 6/2, No Odor	Y ✓ N	
55	60	5	SM: Sandy Silt, 10% Fine Grained Sand, 90% Silt, Dry, 5YR 4/4, No Odor	Y ✓ N	
60	70	10	SM: Sandy Siltstone, Friable, 10% Fine Sand, 90% Silt, Dry, 2.5YR 4/4, No Odor	Y ✓ N	
70	75	5	SW: Fine Grained Sandstone, Dry, 10YR 4/1, No Odor	Y ✓ N	
75	90	15	SM: Sandy Siltstone, Friable, 15% Fine Sand, 85% Silt, Dry, 2.5YR 5/4, No Odor	Y ✓ N	
90	140	50	SM: Silty Sandstone, Friable, 45% Silt, 55% Fine Sand, Dry, 5YR 6/2, No Odor	Y ✓ N	
140	145	5	SW: Fine Grained Sandstone, Dry, 5YR 6/2, No Odor	Y ✓ N	
145	155	15	SM: Sandy Siltstone, Friable, 20% Fine Sand, 80% Silt, Dry, 2.5YR 5/6, No Odor	Y ✓ N	
155	170	15	SW: Sandstone, Friable, 40% Medium Sand, 60% Fine Sand, 2.5YR 6/6 Dry	Y ✓ N	
170	175	5	SM: Silty Sandstone, 20% Silt, 80% Fine Sand, Friable, Dry, 2.5YR 3/4, No Odor	Y ✓ N	
175	185	10	SW: Sandstone, Friable, 40% Medium Sand, 60% Fine Sand, Dry, 2.5YR 4/4	Y ✓ N	
185	200	15	SW: Sandstone, Very Fine to Fine Grained Sand, Dry, 2.5YR 4/4, No Odor	Y ✓ N	
200	205	5	SM: Silty Sandstone, 20% Silt, 80% Fine Sand, Dry, 2.5YR 4/4, No Odor	Y ✓ N	
205	220	15	SW: Silty Sandstone, Fine Grained Sand, Dry, 5YR 5/6, No Odor	Y ✓ N	
220	230	10	SW: Sandstone, 50% Medium Sand, 50% Fine Sand, 2.5YR 4/4, No Odor	Y ✓ N	
230	251	21	SW: Sandstone, Fine Grained Sand, Dense, Damp, 5YR 4/6, No Odor	Y ✓ N	
				Y N	
METHOD USED TO ESTIMATE YIELD OF WATER-BEARING STRATA:				TOTAL ESTIMATED WELL YIELD (gpm):	
<input type="checkbox"/> PUMP <input type="checkbox"/> AIR LIFT <input type="checkbox"/> BAILER <input type="checkbox"/> OTHER – SPECIFY:					

5. TEST; RIG SUPERVISION	WELL TEST	TEST RESULTS - ATTACH A COPY OF DATA COLLECTED DURING WELL TESTING, INCLUDING DISCHARGE METHOD, START TIME, END TIME, AND A TABLE SHOWING DISCHARGE AND DRAWDOWN OVER THE TESTING PERIOD.
	MISCELLANEOUS INFORMATION:	
	PRINT NAME(S) OF DRILL RIG SUPERVISOR(S) THAT PROVIDED ONSITE SUPERVISION OF WELL CONSTRUCTION OTHER THAN LICENSEE: Zechariah D Moody	

6. SIGNATURE	THE UNDERSIGNED HEREBY CERTIFIES THAT, TO THE BEST OF HIS OR HER KNOWLEDGE AND BELIEF, THE FOREGOING IS A TRUE AND CORRECT RECORD OF THE ABOVE DESCRIBED HOLE AND THAT HE OR SHE WILL FILE THIS WELL RECORD WITH THE STATE ENGINEER AND THE PERMIT HOLDER WITHIN 30 DAYS AFTER COMPLETION OF WELL DRILLING:	
	Jarod M Michalsky Digitally signed by Jarod M Michalsky DN: cn=Jarod M Michalsky, o=Talon/ LPE, Ltd., ou= email=jmichalsky@talonlpe.com, c=US Date: 2023.06.27 10:05:28 -05'00'	Jarod M Michalsky 06/27/2023
SIGNATURE OF DRILLER / PRINT SIGNEE NAME		DATE

USE ON JUN 30 2023 PM 2:15

FOR USE INTERNAL USE

WR-20 WELL RECORD & LOG (Version 09/22/2022)

FILE NO. C-4737-POD 1	POD NO. 1	TRN NO. 745751
LOCATION Woa 24.34. 24.133		WELL TAG ID NO. 1

PAGE 2 OF 2

Mike A. Hamman, P.E.
State Engineer



Roswell Office
1900 WEST SECOND STREET
ROS WELL, NM 88201

**STATE OF NEW MEXICO
OFFICE OF THE STATE ENGINEER**

Trn Nbr: 745751
File Nbr: C 04737
Well File Nbr: C 04737 POD1

Jun. 30, 2023

WOODY DUNCAN
TALON LPE
921 N BIVINS STREET
AMARILLO, TX 79107

Greetings:

The above numbered permit was issued in your name on 04/14/2023.

The Well Record was received in this office on 06/30/2023, stating that it had been completed on 04/28/2023, and was a dry well. The well is to be plugged according to 19.27.4.30 NMAC.

Please note that another well can be drilled under this permit if the well is completed and the well log filed on or before 04/13/2024.

If you have any questions, please feel free to contact us.

Sincerely,

A handwritten signature in blue ink that reads "Maret Thompson".


Maret Thompson
(575) 622-6521

drywell



New Mexico Office of the State Engineer

Point of Diversion Summary

		(quarters are 1=NW 2=NE 3=SW 4=SE)					(NAD83 UTM in meters)		
		(quarters are smallest to largest)							
Well Tag	POD Number	Q64	Q16	Q4	Sec	Tws	Rng	X	Y
C	03942 POD1	3	1	2	35	24S	34E	647005	3561246 
<hr/>									
Driller License:		1737		Driller Company:		SHADE TREE DRILLING			
Driller Name:		MULLINS, JUSTINIEL.NER							
Drill Start Date:		05/12/2016		Drill Finish Date:		05/17/2016		Plug Date:	
Log File Date:		08/05/2021		PCW Rcv Date:				Source: Shallow	
Pump Type:				Pipe Discharge Size:				Estimated Yield: 5 GPM	
Casing Size:		6.00		Depth Well:		420 feet		Depth Water: 222 feet	
<hr/>									
Water Bearing Stratifications:				Top	Bottom	Description			
				180	308	Sandstone/Gravel/Conglomerate			
				366	385	Sandstone/Gravel/Conglomerate			
<hr/>									
Casing Perforations:				Top	Bottom				
				240	260				
				360	380				
				400	420				
<hr/>									


The data is furnished by the NMOSE/ISC and is accepted by the recipient with the expressed understanding that the OSE/ISC make no warranties, expressed or implied, concerning the accuracy, completeness, reliability, usability, or suitability for any particular purpose of the data.

1/29/24 12:50 PM

POINT OF DIVERSION SUMMARY

Date	Time	? Water-level date-time accuracy	? Parameter code	Water level, feet below land surface	Water level, feet above specific vertical datum	Referenced vertical datum	? S
				Groundwater	New Mexico	GO	

Click to hideNews Bulletins

- Explore the NEW [USGS National Water Dashboard](#) interactive map to access real-time water data from over 13,500 stations nationwide.
- [Full News](#) 

Groundwater levels for New Mexico

Click to hide state-specific text

 Important: [Next Generation Monitoring Location Page](#)

Search Results -- 1 sites found

Agency code = usgs
site_no list =

- 321025103263601

Minimum number of levels = 1
[Save file of selected sites](#) to local disk for future upload

USGS 321025103263601 24S.34E.35.12411

Lea County, New Mexico
Latitude 32°10'44.0", Longitude 103°26'31.2" NAD83
Land-surface elevation 3,409.00 feet above NGVD29
The depth of the well is 257 feet below land surface.
This well is completed in the Other aquifers (N9999OTHER) national aquifer.
This well is completed in the Ogallala Formation (121OGLL) local aquifer.

Output formats

Table of data
Tab-separated data
Graph of data
Reselect period

Date	Time	? Water-level date-time accuracy	? Parameter code	Water level, feet below land surface	Water level, feet above specific vertical datum	Referenced vertical datum	? Status	? Method of measurement	? Measuring agency	? Source measur
1953-03-29			D 62610		3185.10	NGVD29	1		Z	
1953-03-29			D 62611		3186.69	NAVD88	1		Z	
1953-03-29			D 72019	223.90			1		Z	
1971-01-13			D 62610		3190.96	NGVD29	1		Z	
1971-01-13			D 62611		3192.55	NAVD88	1		Z	
1971-01-13			D 72019	218.04			1		Z	
1976-01-15			D 62610		3189.94	NGVD29	1		Z	
1976-01-15			D 62611		3191.53	NAVD88	1		Z	
1976-01-15			D 72019	219.06			1		Z	
1981-03-20			D 62610		3191.29	NGVD29	1		Z	
1981-03-20			D 62611		3192.88	NAVD88	1		Z	
1981-03-20			D 72019	217.71			1		Z	
1986-03-06			D 62610		3185.50	NGVD29	1		Z	
1986-03-06			D 62611		3187.09	NAVD88	1		Z	

Date	Time	Water-level date-time accuracy	Parameter code	Water level, feet below land surface	Water level, feet above specific vertical datum	Referenced vertical datum	Status
1986-03-06		D	72019	223.50			Z
1991-05-31		D	62610	3189.82	NGVD29		Z
1991-05-31		D	62611	3191.41	NAVD88		Z
1991-05-31		D	72019	219.18			Z
1996-03-14		D	62610	3189.81	NGVD29		S
1996-03-14		D	62611	3191.40	NAVD88		S
1996-03-14		D	72019	219.19			S
2013-01-16 22:00 UTC		m	62610	3185.06	NGVD29		S USGS
2013-01-16 22:00 UTC		m	62611	3186.65	NAVD88		S USGS
2013-01-16 22:00 UTC		m	72019	223.94			S USGS

Explanation

Section	Code	Description
Water-level date-time accuracy	D	Date is accurate to the Day
Water-level date-time accuracy	m	Date is accurate to the Minute
Parameter code	62610	Groundwater level above NGVD 1929, feet
Parameter code	62611	Groundwater level above NAVD 1988, feet
Parameter code	72019	Depth to water level, feet below land surface
Referenced vertical datum	NAVD88	North American Vertical Datum of 1988
Referenced vertical datum	NGVD29	National Geodetic Vertical Datum of 1929
Status	1	Static
Method of measurement	S	Steel-tape measurement.
Method of measurement	Z	Other.
Measuring agency		Not determined
Measuring agency	USGS	U.S. Geological Survey
Source of measurement		Not determined
Source of measurement	S	Measured by personnel of reporting agency.
Water-level approval status	A	Approved for publication -- Processing and review completed.

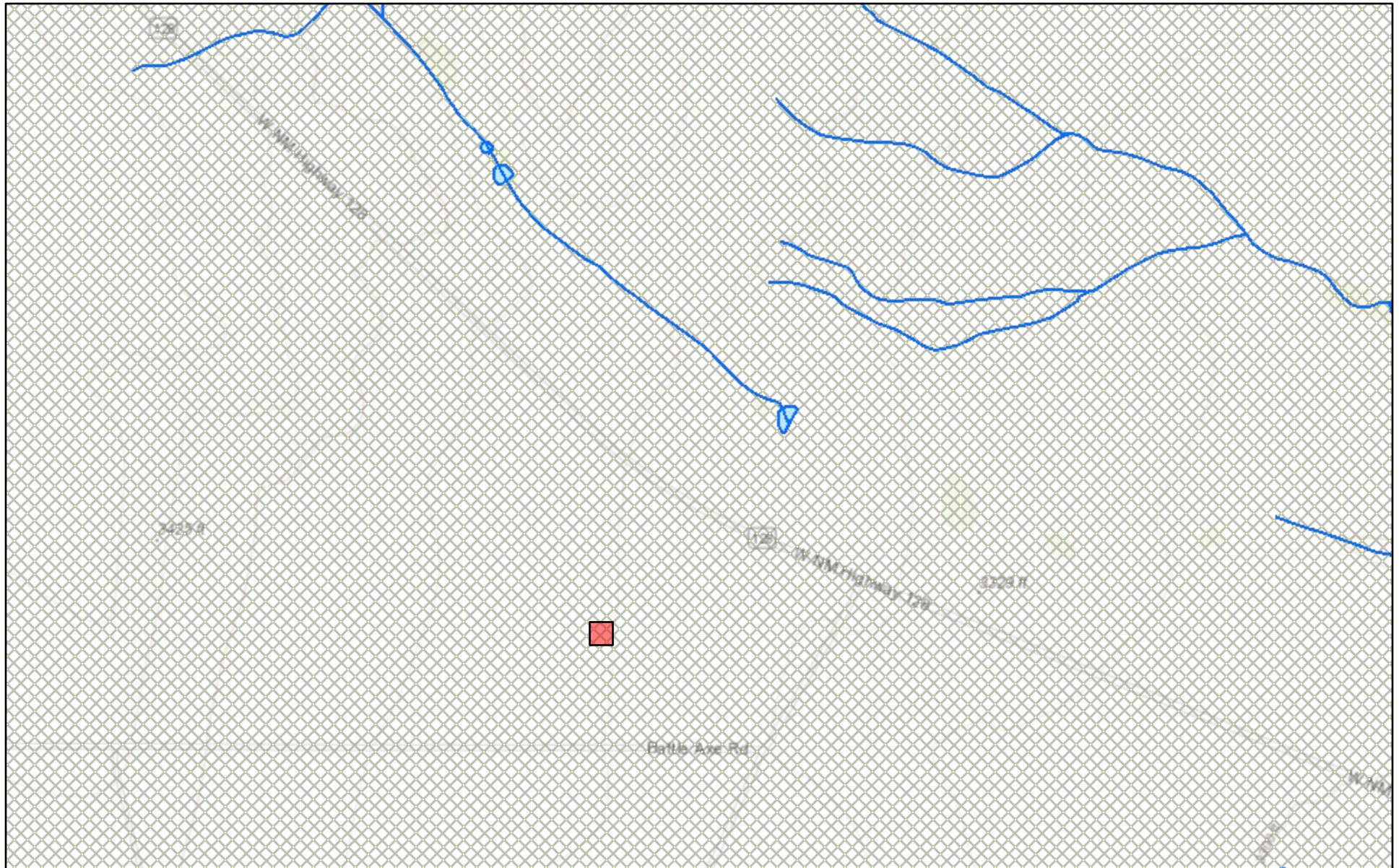
[Questions or Comments](#)
[Automated retrievals](#)
[Help](#)
[Data Tips](#)
[Explanation of terms](#)
[Subscribe for system changes](#)
[News](#)

Accessibility FOIA Privacy Policies and Notices
[U.S. Department of the Interior](#) | [U.S. Geological Survey](#)
Title: Groundwater for New Mexico: Water Levels
URL: <https://nwis.waterdata.usgs.gov/nm/nwis/gwlevels?>

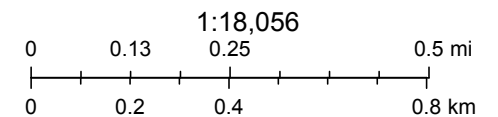


Page Contact Information: [New Mexico Water Data Maintainer](#)
Page Last Modified: 2024-01-29 14:54:39 EST
0.36 0.28 nadww01

New Mexico NFHL Data



June 5, 2023

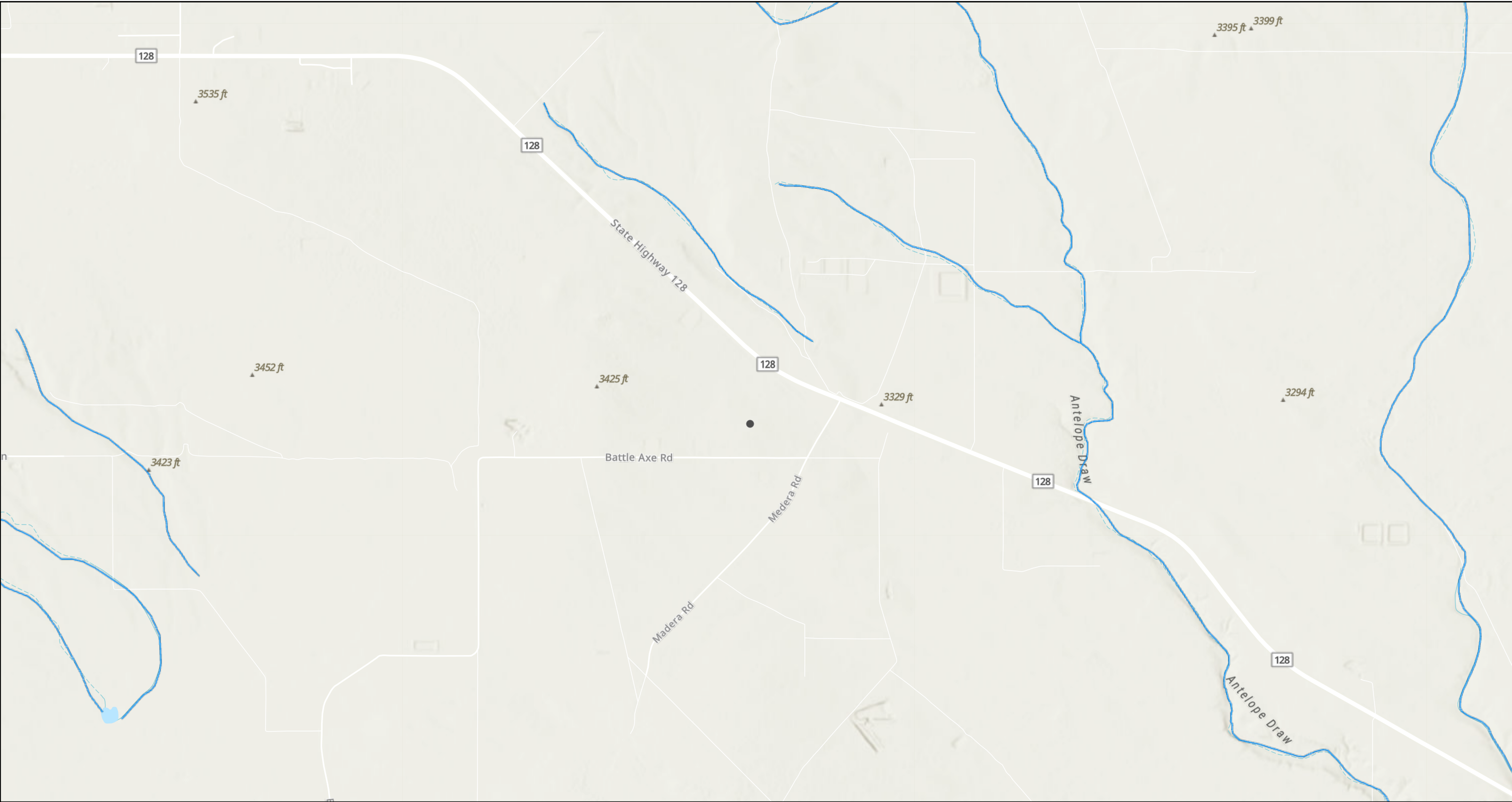


FEMA, Sources: Esri, HERE, Garmin, Intermap, increment P Corp., GEBCO, USGS, FAO, NPS, NRCAN, GeoBase, IGN, Kadaster NL, Ordnance Survey,

nmflood.org is made possible through a collaboration with NMDHSEM,

This is a non-regulatory product for informational use only. Please consult your local floodplain administrator for further information.

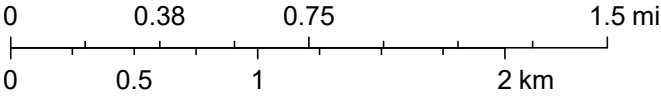
Baseball Cap 25P (09.09.2024)



9/16/2024, 8:45:11 AM

— OSE Streams

1:36,112



Esri, NASA, NGA, USGS, FEMA, Texas Parks & Wildlife, CONANP, Esri, TomTom, Garmin, SafeGraph, GeoTechnologies, Inc, METI/NASA, USGS, EPA, NPS, US Census Bureau, USDA, USFWS, NM OSE

District I
1625 N. French Dr., Hobbs, NM 88240
Phone:(575) 393-6161 Fax:(575) 393-0720
District II
811 S. First St., Artesia, NM 88210
Phone:(575) 748-1283 Fax:(575) 748-9720
District III
1000 Rio Brazos Rd., Aztec, NM 87410
Phone:(505) 334-6178 Fax:(505) 334-6170
District IV
1220 S. St Francis Dr., Santa Fe, NM 87505
Phone:(505) 476-3470 Fax:(505) 476-3462

State of New Mexico
Energy, Minerals and Natural Resources
Oil Conservation Division
1220 S. St Francis Dr.
Santa Fe, NM 87505

QUESTIONS

Action 391435

QUESTIONS

Operator: COG OPERATING LLC 600 W Illinois Ave Midland, TX 79701	OGRID:	229137
	Action Number:	391435
	Action Type:	[C-141] Remediation Closure Request C-141 (C-141-v-Closure)

QUESTIONS

Prerequisites	
Incident ID (n#)	nAPP2425452465
Incident Name	NAPP2425452465 BASEBALL CAP 25P @ 0
Incident Type	Release Other
Incident Status	Remediation Closure Report Received
Incident Facility	[fAPP2129337175] Baseball Cap 25P-BATTERY

Location of Release Source	
Please answer all the questions in this group.	
Site Name	Baseball Cap 25P
Date Release Discovered	09/09/2024
Surface Owner	Private

Incident Details	
Please answer all the questions in this group.	
Incident Type	Release Other
Did this release result in a fire or is the result of a fire	No
Did this release result in any injuries	No
Has this release reached or does it have a reasonable probability of reaching a watercourse	No
Has this release endangered or does it have a reasonable probability of endangering public health	No
Has this release substantially damaged or will it substantially damage property or the environment	No
Is this release of a volume that is or may with reasonable probability be detrimental to fresh water	No

Nature and Volume of Release	
Material(s) released, please answer all that apply below. Any calculations or specific justifications for the volumes provided should be attached to the follow-up C-141 submission.	
Crude Oil Released (bbls) Details	Cause: Equipment Failure Other (Specify) Crude Oil Released: 59 BBL Recovered: 58 BBL Lost: 1 BBL.
Produced Water Released (bbls) Details	Cause: Equipment Failure Other (Specify) Produced Water Released: 10 BBL Recovered: 10 BBL Lost: 0 BBL.
Is the concentration of chloride in the produced water >10,000 mg/l	Yes
Condensate Released (bbls) Details	Not answered.
Natural Gas Vented (Mcf) Details	Not answered.
Natural Gas Flared (Mcf) Details	Not answered.
Other Released Details	Not answered.
Are there additional details for the questions above (i.e. any answer containing Other, Specify, Unknown, and/or Fire, or any negative lost amounts)	Not answered.

District I

1625 N. French Dr., Hobbs, NM 88240
Phone:(575) 393-6161 Fax:(575) 393-0720

District II

811 S. First St., Artesia, NM 88210
Phone:(575) 748-1283 Fax:(575) 748-9720

District III

1000 Rio Brazos Rd., Aztec, NM 87410
Phone:(505) 334-6178 Fax:(505) 334-6170

District IV

1220 S. St Francis Dr., Santa Fe, NM 87505
Phone:(505) 476-3470 Fax:(505) 476-3462

State of New Mexico
Energy, Minerals and Natural Resources
Oil Conservation Division
1220 S. St Francis Dr.
Santa Fe, NM 87505

QUESTIONS, Page 2

Action 391435

QUESTIONS (continued)

Operator: COG OPERATING LLC 600 W Illinois Ave Midland, TX 79701	OGRID: 229137
	Action Number: 391435
	Action Type: [C-141] Remediation Closure Request C-141 (C-141-v-Closure)

QUESTIONS

Nature and Volume of Release (continued)	
Is this a gas only submission (i.e. only significant Mcf values reported)	No, according to supplied volumes this does not appear to be a "gas only" report.
Was this a major release as defined by Subsection A of 19.15.29.7 NMAC	Yes
Reasons why this would be considered a submission for a notification of a major release	From paragraph A. "Major release" determine using: (1) an unauthorized release of a volume, excluding gases, of 25 barrels or more.
With the implementation of the 19.15.27 NMAC (05/25/2021), venting and/or flaring of natural gas (i.e. gas only) are to be submitted on the C-129 form.	

Initial Response

The responsible party must undertake the following actions immediately unless they could create a safety hazard that would result in injury.

The source of the release has been stopped	True
The impacted area has been secured to protect human health and the environment	True
Released materials have been contained via the use of berms or dikes, absorbent pads, or other containment devices	True
All free liquids and recoverable materials have been removed and managed appropriately	True
If all the actions described above have not been undertaken, explain why	Not answered.

Per Paragraph (4) of Subsection B of 19.15.29.8 NMAC the responsible party may commence remediation immediately after discovery of a release. If remediation has begun, please prepare and attach a narrative of actions to date in the follow-up C-141 submission. If remedial efforts have been successfully completed or if the release occurred within a lined containment area (see Subparagraph (a) of Paragraph (5) of Subsection A of 19.15.29.11 NMAC), please prepare and attach all information needed for closure evaluation in the follow-up C-141 submission.

I hereby certify that the information given above is true and complete to the best of my knowledge and understand that pursuant to OCD rules and regulations all operators are required to report and/or file certain release notifications and perform corrective actions for releases which may endanger public health or the environment. The acceptance of a C-141 report by the OCD does not relieve the operator of liability should their operations have failed to adequately investigate and remediate contamination that pose a threat to groundwater, surface water, human health or the environment. In addition, OCD acceptance of a C-141 report does not relieve the operator of responsibility for compliance with any other federal, state, or local laws and/or regulations.

I hereby agree and sign off to the above statement	Name: Brittany Esparza Title: Environmental Technician Email: brittany.Esparza@ConocoPhillips.com Date: 09/12/2024
--	---

District I

1625 N. French Dr., Hobbs, NM 88240
Phone:(575) 393-6161 Fax:(575) 393-0720

District II

811 S. First St., Artesia, NM 88210
Phone:(575) 748-1283 Fax:(575) 748-9720

District III

1000 Rio Brazos Rd., Aztec, NM 87410
Phone:(505) 334-6178 Fax:(505) 334-6170

District IV

1220 S. St Francis Dr., Santa Fe, NM 87505
Phone:(505) 476-3470 Fax:(505) 476-3462

State of New Mexico
Energy, Minerals and Natural Resources
Oil Conservation Division
1220 S. St Francis Dr.
Santa Fe, NM 87505

QUESTIONS, Page 3

Action 391435

QUESTIONS (continued)

Operator: COG OPERATING LLC 600 W Illinois Ave Midland, TX 79701	OGRID:
	229137
	Action Number:
	391435
	Action Type:
	[C-141] Remediation Closure Request C-141 (C-141-v-Closure)

QUESTIONS**Site Characterization**

Please answer all the questions in this group (only required when seeking remediation plan approval and beyond). This information must be provided to the appropriate district office no later than 90 days after the release discovery date.

What is the shallowest depth to groundwater beneath the area affected by the release in feet below ground surface (ft bgs)	Between 100 and 500 (ft.)
What method was used to determine the depth to ground water	NM OSE iWaters Database Search
Did this release impact groundwater or surface water	No
What is the minimum distance, between the closest lateral extents of the release and the following surface areas:	
A continuously flowing watercourse or any other significant watercourse	Between 1000 (ft.) and ½ (mi.)
Any lakebed, sinkhole, or playa lake (measured from the ordinary high-water mark)	Greater than 5 (mi.)
An occupied permanent residence, school, hospital, institution, or church	Greater than 5 (mi.)
A spring or a private domestic fresh water well used by less than five households for domestic or stock watering purposes	Greater than 5 (mi.)
Any other fresh water well or spring	Greater than 5 (mi.)
Incorporated municipal boundaries or a defined municipal fresh water well field	Greater than 5 (mi.)
A wetland	Greater than 5 (mi.)
A subsurface mine	Greater than 5 (mi.)
An (non-karst) unstable area	Greater than 5 (mi.)
Categorize the risk of this well / site being in a karst geology	Low
A 100-year floodplain	Greater than 5 (mi.)
Did the release impact areas not on an exploration, development, production, or storage site	No

Remediation Plan

Please answer all the questions that apply or are indicated. This information must be provided to the appropriate district office no later than 90 days after the release discovery date.

Requesting a remediation plan approval with this submission	Yes
Attach a comprehensive report demonstrating the lateral and vertical extents of soil contamination associated with the release have been determined, pursuant to 19.15.29.11 NMAC and 19.15.29.13 NMAC.	
Have the lateral and vertical extents of contamination been fully delineated	Yes
Was this release entirely contained within a lined containment area	Yes
Per Subsection B of 19.15.29.11 NMAC unless the site characterization report includes completed efforts at remediation, the report must include a proposed remediation plan in accordance with 19.15.29.12 NMAC, which includes the anticipated timelines for beginning and completing the remediation.	
On what estimated date will the remediation commence	10/10/2024
On what date will (or did) the final sampling or liner inspection occur	09/30/2024
On what date will (or was) the remediation complete(d)	10/10/2024
What is the estimated surface area (in square feet) that will be remediated	4950
What is the estimated volume (in cubic yards) that will be remediated	0
These estimated dates and measurements are recognized to be the best guess or calculation at the time of submission and may (be) change(d) over time as more remediation efforts are completed.	
The OCD recognizes that proposed remediation measures may have to be minimally adjusted in accordance with the physical realities encountered during remediation. If the responsible party has any need to significantly deviate from the remediation plan proposed, then it should consult with the division to determine if another remediation plan submission is required.	

District I
1625 N. French Dr., Hobbs, NM 88240
Phone:(575) 393-6161 Fax:(575) 393-0720
District II
811 S. First St., Artesia, NM 88210
Phone:(575) 748-1283 Fax:(575) 748-9720
District III
1000 Rio Brazos Rd., Aztec, NM 87410
Phone:(505) 334-6178 Fax:(505) 334-6170
District IV
1220 S. St Francis Dr., Santa Fe, NM 87505
Phone:(505) 476-3470 Fax:(505) 476-3462

State of New Mexico
Energy, Minerals and Natural Resources
Oil Conservation Division
1220 S. St Francis Dr.
Santa Fe, NM 87505

QUESTIONS, Page 4

Action 391435

QUESTIONS (continued)

Operator: COG OPERATING LLC 600 W Illinois Ave Midland, TX 79701	OGRID: 229137
	Action Number: 391435
	Action Type: [C-141] Remediation Closure Request C-141 (C-141-v-Closure)

QUESTIONS

Remediation Plan (continued)	
<i>Please answer all the questions that apply or are indicated. This information must be provided to the appropriate district office no later than 90 days after the release discovery date.</i>	
This remediation will (or is expected to) utilize the following processes to remediate / reduce contaminants:	
<i>(Select all answers below that apply.)</i>	
Is (or was) there affected material present needing to be removed	No
Is (or was) there a power wash of the lined containment area (to be) performed	Yes
OTHER (Non-listed remedial process)	No
<i>Per Subsection B of 19.15.29.11 NMAC unless the site characterization report includes completed efforts at remediation, the report must include a proposed remediation plan in accordance with 19.15.29.12 NMAC, which includes the anticipated timelines for beginning and completing the remediation.</i>	
I hereby certify that the information given above is true and complete to the best of my knowledge and understand that pursuant to OCD rules and regulations all operators are required to report and/or file certain release notifications and perform corrective actions for releases which may endanger public health or the environment. The acceptance of a C-141 report by the OCD does not relieve the operator of liability should their operations have failed to adequately investigate and remediate contamination that pose a threat to groundwater, surface water, human health or the environment. In addition, OCD acceptance of a C-141 report does not relieve the operator of responsibility for compliance with any other federal, state, or local laws and/or regulations.	
I hereby agree and sign off to the above statement	Name: Brittany Esparza Title: Environmental Technician Email: brittany.Esparza@ConocoPhillips.com Date: 10/10/2024
<i>The OCD recognizes that proposed remediation measures may have to be minimally adjusted in accordance with the physical realities encountered during remediation. If the responsible party has any need to significantly deviate from the remediation plan proposed, then it should consult with the division to determine if another remediation plan submission is required.</i>	

District I

1625 N. French Dr., Hobbs, NM 88240
Phone:(575) 393-6161 Fax:(575) 393-0720

District II

811 S. First St., Artesia, NM 88210
Phone:(575) 748-1283 Fax:(575) 748-9720

District III

1000 Rio Brazos Rd., Aztec, NM 87410
Phone:(505) 334-6178 Fax:(505) 334-6170

District IV

1220 S. St Francis Dr., Santa Fe, NM 87505
Phone:(505) 476-3470 Fax:(505) 476-3462

State of New Mexico
Energy, Minerals and Natural Resources
Oil Conservation Division
1220 S. St Francis Dr.
Santa Fe, NM 87505

QUESTIONS, Page 6

Action 391435

QUESTIONS (continued)

Operator: COG OPERATING LLC 600 W Illinois Ave Midland, TX 79701	OGRID:
	229137
	Action Number:
	391435
Action Type: [C-141] Remediation Closure Request C-141 (C-141-v-Closure)	

QUESTIONS

Liner Inspection Information	
Last liner inspection notification (C-141L) recorded	386866
Liner inspection date pursuant to Subparagraph (a) of Paragraph (5) of Subsection A of 19.15.29.11 NMAC	09/30/2024
Was all the impacted materials removed from the liner	Yes
What was the liner inspection surface area in square feet	4950

Remediation Closure Request

Only answer the questions in this group if seeking remediation closure for this release because all remediation steps have been completed.

Requesting a remediation closure approval with this submission	Yes
Have the lateral and vertical extents of contamination been fully delineated	Yes
Was this release entirely contained within a lined containment area	Yes
What was the total surface area (in square feet) remediated	4950
What was the total volume (cubic yards) remediated	0
Summarize any additional remediation activities not included by answers (above)	na

The responsible party must attach information demonstrating they have complied with all applicable closure requirements and any conditions or directives of the OCD. This demonstration should be in the form of a comprehensive report (in .pdf format) including a scaled site map, sampling diagrams, relevant field notes, photographs of any excavation prior to backfilling, laboratory data including chain of custody documents of final sampling, and a narrative of the remedial activities. Refer to 19.15.29.12 NMAC.

I hereby certify that the information given above is true and complete to the best of my knowledge and understand that pursuant to OCD rules and regulations all operators are required to report and/or file certain release notifications and perform corrective actions for releases which may endanger public health or the environment. The acceptance of a C-141 report by the OCD does not relieve the operator of liability should their operations have failed to adequately investigate and remediate contamination that pose a threat to groundwater, surface water, human health or the environment. In addition, OCD acceptance of a C-141 report does not relieve the operator of responsibility for compliance with any other federal, state, or local laws and/or regulations. The responsible party acknowledges they must substantially restore, reclaim, and re-vegetate the impacted surface area to the conditions that existed prior to the release or their final land use in accordance with 19.15.29.13 NMAC including notification to the OCD when reclamation and re-vegetation are complete.

I hereby agree and sign off to the above statement	Name: Brittany Esparza Title: Environmental Technician Email: brittany.Esparza@ConocoPhillips.com Date: 10/10/2024
--	---

District I
1625 N. French Dr., Hobbs, NM 88240
Phone:(575) 393-6161 Fax:(575) 393-0720
District II
811 S. First St., Artesia, NM 88210
Phone:(575) 748-1283 Fax:(575) 748-9720
District III
1000 Rio Brazos Rd., Aztec, NM 87410
Phone:(505) 334-6178 Fax:(505) 334-6170
District IV
1220 S. St Francis Dr., Santa Fe, NM 87505
Phone:(505) 476-3470 Fax:(505) 476-3462

State of New Mexico
Energy, Minerals and Natural Resources
Oil Conservation Division
1220 S. St Francis Dr.
Santa Fe, NM 87505

CONDITIONS

Action 391435

CONDITIONS

Operator: COG OPERATING LLC 600 W Illinois Ave Midland, TX 79701	OGRID: 229137
	Action Number: 391435
	Action Type: [C-141] Remediation Closure Request C-141 (C-141-v-Closure)

CONDITIONS

Created By	Condition	Condition Date
rhamlet	We have received your Remediation Closure Report for Incident #NAPP2425452465 BASEBALL CAP 25P, thank you. This Remediation Closure Report is approved.	11/4/2024