



September 19, 2024

New Mexico Oil Conservation Division

1220 South St. Francis Drive
Santa Fe, New Mexico 87505

**Re: Closure Request
Muy Wayno Recycle Facility
Incident Number nAPP2409948527
Eddy County, New Mexico**

To Whom It May Concern:

Ensolum, LLC (Ensolum), on behalf of XTO Energy, Inc. (XTO), has prepared this *Closure Request* to document assessment, excavation of impacted soil, and soil sampling activities at the Muy Wayno Recycle Facility (Site). The purpose of the remediation activities was to remove impacted soil following a release of crude oil at the Site. Based on remediation soil sample laboratory analytical results following removal of impacted soil, XTO is submitting this *Closure Request*, describing remediation activities that have occurred and requesting no further action for Incident Number nAPP2409948527.

SITE DESCRIPTION AND RELEASE SUMMARY

The Site is located in Unit C, Section 7, Township 25 South, Range 30 East, in Eddy County, New Mexico (32.14865°, -103.92184°) and is associated with oil and gas exploration and production operations on state land managed by the New Mexico State Land Office (SLO).

On March 26, 2024, human error resulted in the release of approximately 15 barrels (bbls) of crude oil into a lined secondary containment. XTO dispatched a hydrovacuum truck immediately and recovered all fluids. XTO submitted an Initial C-141 Application (C-141) on April 8, 2024. The release was assigned Incident Number nAPP2409948527. A liner integrity inspection was conducted by Ensolum personnel following a 48-hour notification. Ensolum personnel inspected the lined containment on April 12, 2024 and upon inspection, the liner was determined to be insufficient.

SITE CHARACTERIZATION AND CLOSURE CRITERIA

The Site was characterized to determine the applicability of Table I, Closure Criteria for Soils Impacted by a Release, of Title 19, Chapter 15, Part 29 (19.15.29) of the New Mexico Administrative Code (NMAC). Results from the characterization desktop review are presented on page 3 of the Form C-141, Site Assessment/Characterization. Potential site receptors are identified on Figure 1.

Depth to groundwater at the Site is estimated to be greater than 100 feet below ground surface (bgs) based on the nearest groundwater well data. The nearest groundwater well with depth to groundwater data United States Geological Survey (USGS) well 320857103553301, located approximately 1,211 feet west of the site. The well's recorded depth to water is 264 feet below ground surface (bgs) with a total depth of 385 feet as of January 28, 1998. The referenced well record is included in Appendix A.

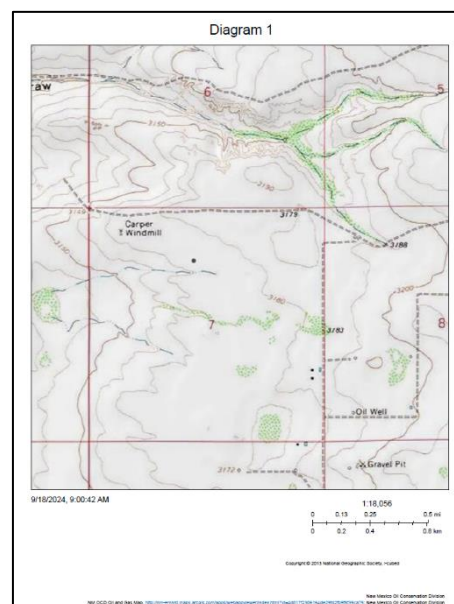
XTO Energy, Inc
Closure Request
Muy Wayno Recycle Facility

The Site is greater than 200 feet from a lakebed, sinkhole, or playa lake and greater than 300 feet from an occupied residence, school, hospital, institution, church, or wetland. The Site is greater than 1,000 feet to a freshwater well or spring and is not within a 100-year floodplain or overlying a subsurface mine. The Site is not underlain by unstable geology (low potential karst designation area).

Watercourse Survey

The closest potential surface water or significant watercourse to the Site is a seasonal dry wash, located approximately 241 feet south of the Site. Because the watercourse appeared in online databases to flow through the frac pond facility (Figure 2), Ensolum personnel conducted a field investigation to confirm the presence or absence of the significant watercourse. Field verification is sometimes necessary to measure the distance of the feature from the release extent and to confirm the feature complies with the definition of a significant watercourse per Subsection P of 19.15.17.7 NMAC. Specifically, the definition in Subsection P of 19.15.17.7 NMAC requires a defined bed and bank and either named or identified by a dashed blue line on United States Geological Survey (USGS) 7.5-minute quadrangle map or the next lower order tributary with a defined bed and bank of such watercourse.

The feature is not identified by a dashed blue line on the current USGS 7.5-minute quadrangle map. The proposed watercourse is identified as a dashed black line (Diagram 1). Additionally, no feature with a defined bed or bank was observed within 300 feet of the release during ground truthing, which included a pedestrian survey of the area east and west of the Site. The survey provided no evidence of fluvial deposition within the watercourse, only a few erosional ruts and swales aligned with the topographic gradient to the west of the facility pad. Photos from the survey are presented in Figure 2.



Based on the observations presented, there are no significant watercourses located within 300 feet of the Site location per the definition of a significant watercourse in Subsection P of 19.15.17.7 NMAC. Instead, only a few faint erosional channels formed by drainage of water during storm events. The faint conduits are intercepted by the facility pad.

Though the watercourse survey confirmed the absence of a significant watercourse to the west, groundwater data is greater than 25 years old, as preferred by the NMOCD, the following NMOCD Table 1 Closure Criteria (Closure Criteria) apply:

- Benzene: 10 milligrams per kilogram (mg/kg)
- Benzene, toluene, ethylbenzene, and total xylenes (BTEX): 50 mg/kg
- Total petroleum hydrocarbons (TPH): 100 mg/kg
- Chloride: 600 mg/kg

CULTURAL PROPERTIES PROTECTION

Since the incident occurred on pad and no fluids were released or reached the pad surface, the site is exempt from the Cultural Properties Protection Rule (CPP). As such, no additional cultural resource surveys were completed in connection with this release.

XTO Energy, Inc
Closure Request
Muy Wayno Recycle Facility

SITE ASSESSMENT ACTIVITIES

On April 26, 2024, Site assessment activities were conducted to evaluate the presence or absence of impacts to soil following the failed liner integrity inspection. Ensolum personnel advanced one pothole (PH01) via hand-auger at the location of the tear in the liner identified during the liner integrity inspection. Two discrete delineation soil samples were collected from the pothole at depths between 0.5 feet and 2 feet bgs. In addition, six delineation soil samples (SS01 through SS06) were collected around the lined secondary containment at a depth of 0.5 feet bgs in order to confirm the lateral definition of the release. The delineation soil samples were field screened for volatile organic compounds (VOCs) utilizing a calibrated photoionization detector (PID) and chloride utilizing Hach® chloride QuanTab® test strips. Field screening results and observations from the delineation pothole were documented on a lithologic/soil sampling log, which is included as Appendix B. The delineation soil sample locations were mapped utilizing a handheld Global Positioning System (GPS) unit and are depicted on Figure 3. Photo documentation was conducted during the Site visits and a photographic log is included in Appendix C.

The soil samples were placed directly into pre-cleaned glass jars, labeled with the location, date, time, sampler name, method of analysis, and immediately placed on ice. The soil samples were transported under strict chain-of-custody procedures to Cardinal Laboratories (Cardinal) in Hobbs, New Mexico, for analysis of the following constituents of concern (COC): BTEX following United States Environmental Protection Agency (EPA) Method 8021B; TPH-gasoline range organics (GRO), TPH-diesel range organics (DRO), and TPH-oil range organics (ORO) following EPA Method 8015M/D; and chloride following SM4500.

Laboratory analytical results indicated COC concentrations for all lateral delineation soil samples were in compliance with the Closure Criteria, however, soil sample results from PH01, collected inside of the secondary containment, contained elevated chloride concentrations that exceeded the Closure Criteria. Laboratory analytical results from PH01B, collected at 2 feet bgs indicated all COC concentrations compliant with the Closure Criteria, confirming vertical delineation of the impacted soil. Laboratory analytical results are summarized in Table 1 and the complete laboratory analytical reports are included in Appendix D.

LINER REMOVAL AND EXCAVATION SOIL SAMPLING ACTIVITIES

On August 19, 2024, the tanks were decommissioned and the secondary containment, including the liner, was removed from the Site. Following removal of the equipment, Ensolum personnel returned to the Site to oversee removal of the impacted soil identified at delineation soil sample PH01. Impacted soil was excavated as indicated by visible staining and laboratory analytical results for the delineation soil samples. Excavation activities were performed using track-mounted backhoe and transport vehicle. To direct excavation activities, soil was screened for VOCs and chloride. The excavation was completed to a depth of 3 feet bgs. Photographic documentation of the excavation activities is included in Appendix C.

Following removal of the impacted soil, 5-point composite soil samples were collected at least every 200 square feet from the floor and sidewall of the excavation. The 5-point composite samples were collected by placing five equivalent aliquots of soil into a 1-gallon, resealable plastic bag and homogenizing the samples by thoroughly mixing. Composite soil samples FS01 through FS02 were collected from the floor of the excavation at a depth of 3 feet bgs. Confirmation sidewall sample SW01 was collected at depths ranging from ground surface to 3 feet bgs. The soil samples were collected, handled, and analyzed following the same procedures as described above at Cardinal in Hobbs, New Mexico. The excavation extent and excavation soil sample locations are presented on Figure 4.

XTO Energy, Inc
Closure Request
Muy Wayno Recycle Facility

The excavation area measured approximately 250 square feet. A total of approximately 30 cubic yards of impacted soil were removed during the excavation activities. The impacted soil was transported and properly disposed of at the R360 Facility in Carlsbad, New Mexico.

LABORATORY ANALYTICAL RESULTS

Laboratory analytical results for all excavation floor and sidewall samples indicated COC concentrations were compliant with the Closure Criteria. The laboratory analytical results are summarized in Table 1 and the complete laboratory analytical reports are included in Appendix D.

RECLAMATION ACTIVITIES

Upon completion of excavation activities and receipt of final laboratory analytical results, the excavation was backfilled. One representative 5-point composite sample (BF01) was collected from the backfill material. The backfill soil sample was handled and analyzed following the same procedures as described above. Laboratory analytical results for the backfill soil sample confirmed compliance with the NMOCD requirement for the reclaimed area to contain non-waste containing, uncontaminated, earthen material with chloride concentrations less than 600 mg/kg and TPH concentrations less than 100 mg/kg. The laboratory analytical report is included in Appendix D.

CLOSURE REQUEST

Site assessment and delineation activities were conducted at the Site to assess for the presence or absence of impacted soil from the March 26, 2024 release of crude oil. Laboratory analytical results for all excavation soil samples collected indicate COC concentrations were compliant with the Closure Criteria. Based on the soil sample laboratory analytical results, no further remediation is required. The excavation has been backfilled with material purchased locally and the Site has been recontoured to match pre-existing site conditions.

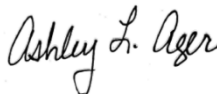
Depth to groundwater has been estimated to be greater than 100 feet bgs and no other sensitive receptors were identified near the release extent. Based on laboratory analytical results compliant with Closure Criteria, no further remediation is required. As such, XTO respectfully requests closure for Incident Number nAPP2409948527.

If you have any questions or comments, please contact Ms. Tacoma Morrissey at (337) 257-8307 or tmorrissey@ensolum.com.

Sincerely,
Ensolum, LLC



David A. McInnis
Project Geologist



Ashley L. Ager, M.S., P.G.
Principal

cc: Colton Brown, XTO
Kaylan Dirkx, XTO
SLO

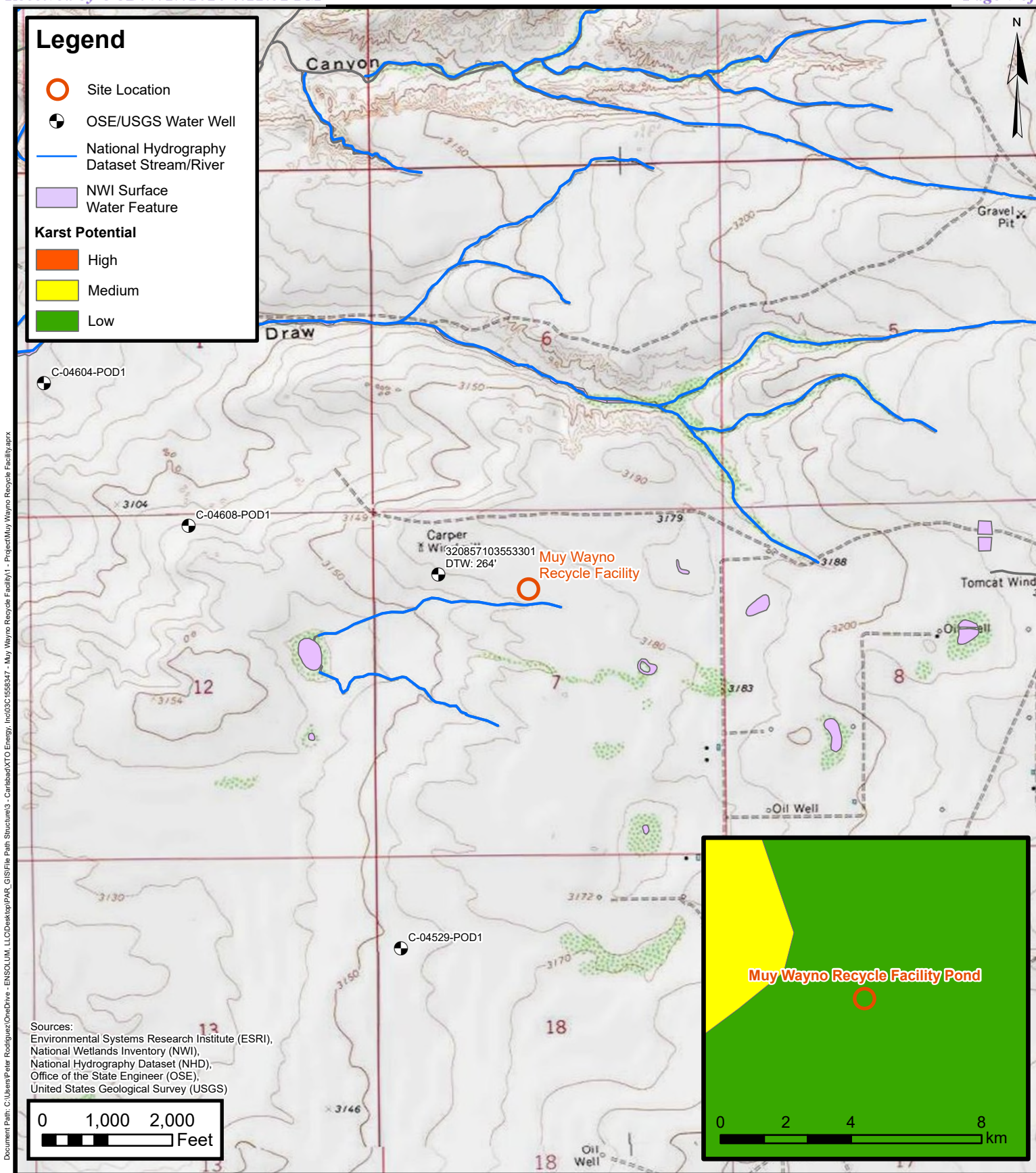
Appendices:

XTO Energy, Inc
Closure Request
Muy Wayno Recycle Facility

Figure 1	Site Receptor Map
Figure 2	Watercourse Survey Map
Figure 3	Delineation Soil Sample Locations
Figure 4	Confirmation Soil Sample Locations
Table 1	Soil Sample Analytical Results
Appendix A	Referenced Well Records
Appendix B	Lithology Soil Sampling Logs
Appendix C	Photographic Log
Appendix D	Laboratory Analytical Reports & Chain-of-Custody Documentation



FIGURES



Site Receptor Map

XTO Energy, Inc

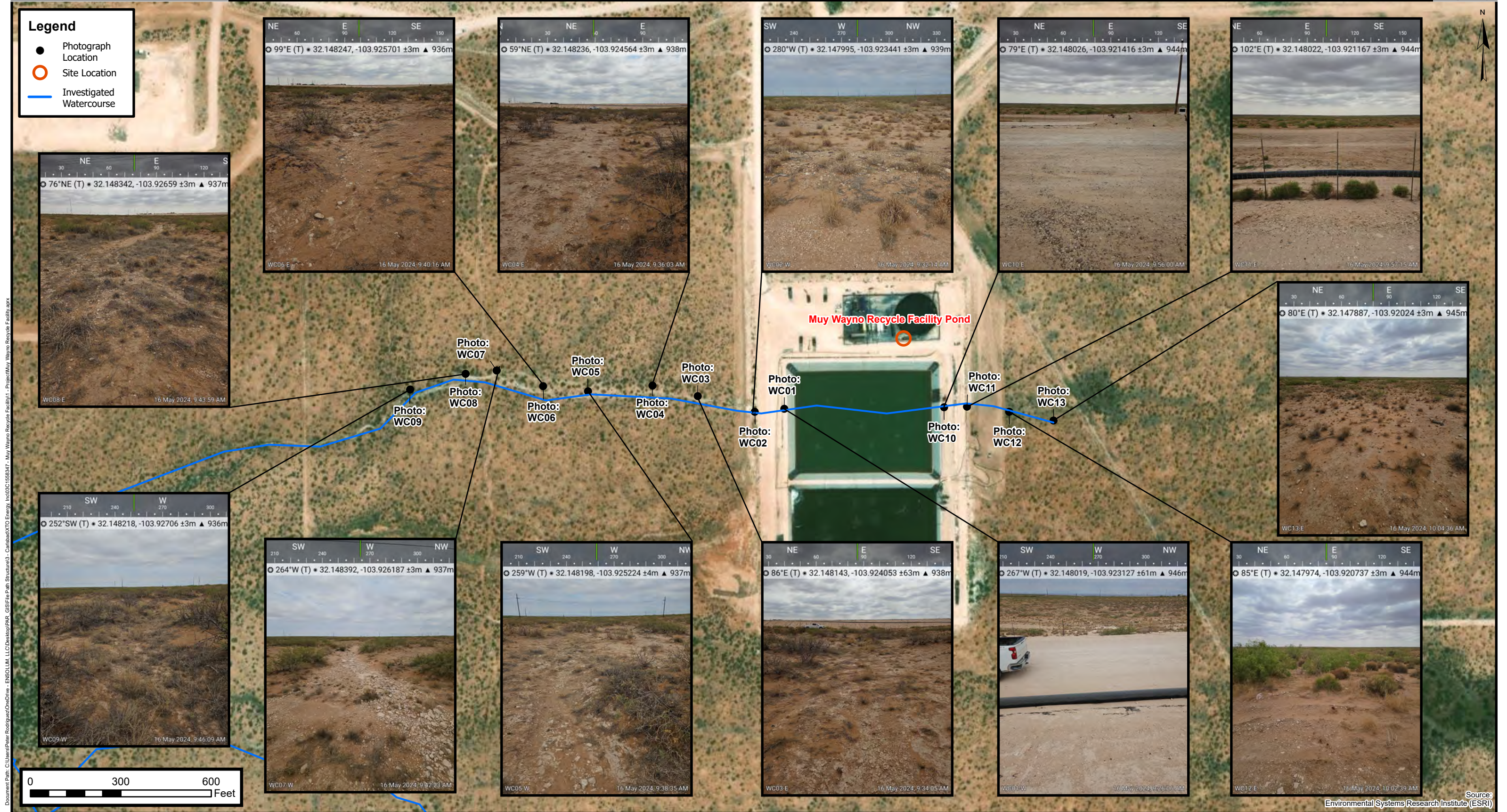
Muy Wayno Recycle Facility

Incident Number: NAPP2409948527

Unit C, Section 7, Township 25 South, Range 30 East
Eddy County, New Mexico

FIGURE

1



Watercourse Survey Photos

XTO Energy, Inc
Muy Wayno Recycle Facility
Incident Number: NAPP2409948527
Unit C, Section 7, Township 25 South, Range 30 East
Eddy Co, New Mexico

FIGURE
2



Delineation Soil Sample Locations

XTO Energy, Inc

Muy Wayno Recycle Facility

Incident Number: NAPP2409948527

Unit C, Section 7, Township 25 South, Range 30 East
Eddy County, New Mexico

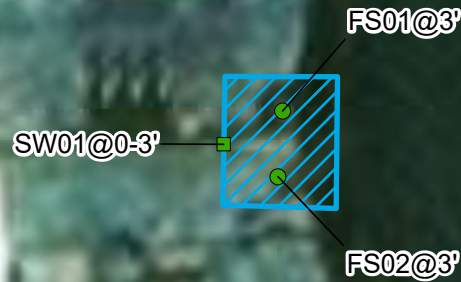
FIGURE

3

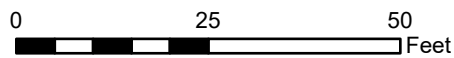
Document Path: C:\Users\Peter.Rodriguez\OneDrive - ENSOLUM, LLC\Desktop\PAR_GIS\File Path Structure\3 - Carlsbad\XTO Energy, Inc\03C158347 - Muy Wayno Recycle Facility\1 - Project\Muy Wayno Recycle Facility.aprx

Legend

- Excavation Floor
Sample Compliant
with Closure Criteria
- Excavation Sidewall
Sample Compliant
with Closure Criteria
- Excavation Extent



Notes:
Sample ID @ Depth Below Ground Surface



Source:
Environmental Systems Research Institute (ESRI)



Excavation Soil Sample Locations

XTO Energy, Inc
Muy Wayno Recycle Facility
Incident Number: NAPP2409948527
Unit C, Section 7, Township 25 South, Range 30 East
Eddy County, New Mexico

FIGURE
4



TABLES

TABLE 1
SOIL SAMPLE ANALYTICAL RESULTS
Muy Wayno Recycle Facility
XTO Energy, Inc
Eddy County, New Mexico

Sample I.D.	Sample Date	Sample Depth (feet bgs)	Benzene (mg/kg)	Total BTEX (mg/kg)	TPH GRO (mg/kg)	TPH DRO (mg/kg)	TPH ORO (mg/kg)	GRO+DRO (mg/kg)	Total TPH (mg/kg)	Chloride (mg/kg)
NMOCD Table I Closure Criteria (NMAC 19.15.29)			10	50	NE	NE	NE	NE	100	600
Delineation Soil Samples										
PH01	04/26/2024	0-5	<0.050	<0.300	<10.0	<10.0	<10.0	<10.0	<10.0	1,860
PH01B	04/26/2024	2	<0.050	<0.300	<10.0	<10.0	<10.0	<10.0	<10.0	240
SS01	04/26/2024	0.5	<0.050	<0.300	<10.0	<10.0	<10.0	<10.0	<10.0	224
SS02	04/26/2024	0.5	<0.050	<0.300	<10.0	<10.0	<10.0	<10.0	<10.0	240
SS03	04/26/2024	0.5	<0.050	<0.300	<10.0	<10.0	<10.0	<10.0	<10.0	192
SS04	04/26/2024	0.5	<0.050	<0.300	<10.0	<10.0	<10.0	<10.0	<10.0	128
SS05	04/26/2024	0.5	<0.050	<0.300	<10.0	<10.0	<10.0	<10.0	<10.0	240
SS06	04/26/2024	0.5	<0.050	<0.300	<10.0	<10.0	<10.0	<10.0	<10.0	400
Confirmation Soil Samples										
FS01	08/29/2024	3	<0.050	<0.300	<10.0	<10.0	<10.0	<10.0	<10.0	336
FS02	08/29/2024	3	<0.050	<0.300	<10.0	<10.0	<10.0	<10.0	<10.0	272
SW01	08/29/2024	0-3	<0.050	<0.300	<10.0	<10.0	<10.0	<10.0	<10.0	272

Notes:

bgs: below ground surface

mg/kg: milligrams per kilogram

NMOCD: New Mexico Oil Conservation Division

BTEX: Benzene, Toluene, Ethylbenzene, and Xylenes

Concentrations in **bold** exceed the NMOCD Table I Closure Criteria or reclamation requirement where applicable.

GRO: Gasoline Range Organics

DRO: Diesel Range Organics

ORO: Oil Range Organics

TPH: Total Petroleum Hydrocarbon

NMAC: New Mexico Administrative Code

Grey text indicates soil sample removed during excavation activities



APPENDIX A

Referenced Well Records



USGS Home
Contact USGS
Search USGS

National Water Information System: Web Interface

USGS Water Resources

Data Category:


Groundwater

Geographic Area:

United States

GO

Click to hideNews Bulletins

- Explore the NEW [USGS National Water Dashboard](#) interactive map to access real-time water data from over 13,500 stations nationwide.
- [Full News](#) 

Groundwater levels for the Nation

 Important: [Next Generation Monitoring Location Page](#)

Search Results -- 1 sites found

Agency code = usgs
site_no list =

- 320857103553301

Minimum number of levels = 1
[Save file of selected sites](#) to local disk for future upload

USGS 320857103553301 25S.30E.07.112331

Eddy County, New Mexico
Latitude 32°08'57", Longitude 103°55'33" NAD27
Land-surface elevation 3,169 feet above NAVD88
The depth of the well is 385 feet below land surface.
This well is completed in the Pecos River Basin alluvial aquifer (N100PCSRVR) national aquifer.
This well is completed in the Alluvium, Bolson Deposits and Other Surface Deposits (110AVMB) local aquifer.

Output formats

Table of data
Tab-separated data
Graph of data
Reselect period

Date	Time	? Water-level date-time accuracy	? Parameter code	Water level, feet below land surface	Water level, feet above specific vertical datum	Referenced vertical datum	? Status	? Method of measurement	? Measuring agency	? Source of measur
1959-02-05			D 62610		2903.75	NGVD29	1		Z	
1959-02-05			D 62611		2905.37	NAVD88	1		Z	
1959-02-05			D 72019	263.63			1		Z	
1959-03-07			D 62610		2904.08	NGVD29	1		Z	
1959-03-07			D 62611		2905.70	NAVD88	1		Z	
1959-03-07			D 72019	263.30			1		Z	
1987-10-20			D 62610		2903.13	NGVD29	1		Z	
1987-10-20			D 62611		2904.75	NAVD88	1		Z	
1987-10-20			D 72019	264.25			1		Z	
1992-11-06			D 62610		2904.38	NGVD29	1		S	
1992-11-06			D 62611		2906.00	NAVD88	1		S	
1992-11-06			D 72019	263.00			1		S	
1998-01-28			D 62610		2903.26	NGVD29	1		V	
1998-01-28			D 62611		2904.88	NAVD88	1		V	
1998-01-28			D 72019	264.12			1		V	

Explanation		
Section	Code	Description
Water-level date-time accuracy	D	Date is accurate to the Day
Parameter code	62610	Groundwater level above NGVD 1929, feet
Parameter code	62611	Groundwater level above NAVD 1988, feet
Parameter code	72019	Depth to water level, feet below land surface
Referenced vertical datum	NAVD88	North American Vertical Datum of 1988
Referenced vertical datum	NGVD29	National Geodetic Vertical Datum of 1929
Status	1	Static
Method of measurement	S	Steel-tape measurement.
Method of measurement	V	Calibrated electric-tape measurement.
Method of measurement	Z	Other.
Measuring agency		Not determined
Source of measurement		Not determined
Water-level approval status	A	Approved for publication -- Processing and review completed.

[Questions or Comments](#)
[Automated retrievals](#)
[Help](#)
[Data Tips](#)
[Explanation of terms](#)
[Subscribe for system changes](#)
[News](#)

[Accessibility](#) [FOIA](#) [Privacy](#) [Policies and Notices](#)
[U.S. Department of the Interior](#) | [U.S. Geological Survey](#)
Title: Groundwater for USA: Water Levels
URL: <https://nwis.waterdata.usgs.gov/nwis/gwlevels>




Page Contact Information: [USGS Water Data Support Team](#)
Page Last Modified: 2024-05-20 16:37:01 EDT
0.31 0.25 nadww02



APPENDIX B

Lithologic Soil Sampling Logs

								Sample Name: Uriel Santillana		Date: 4/26/2024	
								Site Name: Muy Wayno Recycle Facility			
								Incident Number: nAPP2409948527			
								Job Number: 03C1558347			
LITHOLOGIC / SOIL SAMPLING LOG								Logged By: Uriel Santillana		Method:	
Coordinates: 32.14865, -103.92184								Hole Diameter: 2"		Total Depth: 2'	
Comments: Field screening conducted with HACH Chloride Test Strips and PID for chloride and vapor, respectively. Chloride test performed with 1:4 dilution factor of soil to distilled water. No correction factors included.											
Moisture Content	Chloride (ppm)	Vapor (ppm)	Staining	Sample ID	Sample Depth (ft bgs)	Depth (ft bgs)	USCS/Rock Symbol	Lithologic Descriptions			
M	2,055	0	N	PH01	0.5	0	SP-SM	0-1' Sand with silt lots of silt, tan, well sorted			
D	1,456	0	N			1					
D	162	0	N	PH1B	2	2	SP-SC	1.5-2' Sand with trace silt and caly, tan			
								Total Depth at 2' bgs			



APPENDIX C

Photographic Log



Photographic Log

XTO Energy, Inc

Muy Wayno Recycle Facility

Incident Number nAPP2409948527



Photograph: 1 Date: 4/12/2024
Description: Well Sign
View: Southeast



Photograph: 2 Date: 4/12/2024
Description: Site assessment, liner condition.
View: Northwest



Photograph: 3 Date: 4/23/2024
Description: Site assessment, liner tear location.
View: Southeast



Photograph: 4 Date: 4/26/2024
Description: Delineation Activities
View: Northeast



Photographic Log

XTO Energy, Inc

Muy Wayno Recycle Facility

Incident Number nAPP2409948527



Photograph: 5 Date: 8/29/2024
Description: Excavation Activities
View: Northeast



Photograph: 6 Date: 8/29/2024
Description: Excavation Activities
View: Southwest



Photograph: 7 Date: 8/29/2024
Description: Excavation Activities
View: South



Photograph: 8 Date: 9/11/2024
Description: Backfill Activities
View: Northwest



APPENDIX D

Laboratory Analytical Reports & Chain of Custody Documentation

PHONE (575) 393-2326 ° 101 E. MARLAND ° HOBBS, NM 88240

May 07, 2024

DAVID MCINNIS

ENSOLUM

3122 NATIONAL PARKS HWY

CARLSBAD, NM 88220

RE: MUY WAYNO RECYCLING FACILITY

Enclosed are the results of analyses for samples received by the laboratory on 04/30/24 12:36.

Cardinal Laboratories is accredited through Texas NELAP under certificate number T104704398-23-16. Accreditation applies to drinking water, non-potable water and solid and chemical materials. All accredited analytes are denoted by an asterisk (*). For a complete list of accredited analytes and matrices visit the TCEQ website at

www.tceq.texas.gov/field/ga/lab_accred_certif.html.

Cardinal Laboratories is accredited through the State of Colorado Department of Public Health and Environment for:

Method EPA 552.2	Total Haloacetic Acids (HAA-5)
Method EPA 524.2	Total Trihalomethanes (TTHM)
Method EPA 524.4	Regulated VOCs (V1, V2, V3)

Cardinal Laboratories is accredited through the State of New Mexico Environment Department for:

Method SM 9223-B	Total Coliform and E. coli (Colilert MMO-MUG)
Method EPA 524.2	Regulated VOCs and Total Trihalomethanes (TTHM)
Method EPA 552.2	Total Haloacetic Acids (HAA-5)

Accreditation applies to public drinking water matrices for State of Colorado and New Mexico.

This report meets NELAP requirements and is made up of a cover page, analytical results, and a copy of the original chain-of-custody. If you have any questions concerning this report, please feel free to contact me.

Sincerely,

Celey D. Keene

Lab Director/Quality Manager



PHONE (575) 393-2326 • 101 E. MARLAND • HOBBS, NM 88240

Analytical Results For:

ENSOLUM
3122 NATIONAL PARKS HWY
CARLSBAD NM, 88220

Project: MUY WAYNO RECYCLING FACILITY
Project Number: 03C1558347
Project Manager: DAVID MCINNIS
Fax To:

Reported:
07-May-24 16:23

Sample ID	Laboratory ID	Matrix	Date Sampled	Date Received
PH 01 0.5'	H242290-01	Soil	26-Apr-24 10:35	30-Apr-24 12:36
PH 01 B 2'	H242290-02	Soil	26-Apr-24 11:30	30-Apr-24 12:36
SS 01 0.5'	H242290-03	Soil	26-Apr-24 14:15	30-Apr-24 12:36
SS 02 0.5'	H242290-04	Soil	26-Apr-24 15:00	30-Apr-24 12:36
SS 03 0.5'	H242290-05	Soil	26-Apr-24 15:20	30-Apr-24 12:36
SS 04 0.5'	H242290-06	Soil	26-Apr-24 15:45	30-Apr-24 12:36
SS 05 0.5'	H242290-07	Soil	26-Apr-24 15:50	30-Apr-24 12:36
SS 06 0.5'	H242290-08	Soil	26-Apr-24 16:15	30-Apr-24 12:36

05/07/24 - Project name was misread at login. This is the revised report with the corrected project name as per the client.
This report will replace the one sent on 05/06/24.

Cardinal Laboratories

*=Accredited Analyte

PLEASE NOTE: Liability and Damages. Cardinal's liability and client's exclusive remedy for any claim arising, whether based in contract or tort, shall be limited to the amount paid by client for analyses. All claims, including those for negligence or any other cause whatsoever shall be deemed waived unless made in writing and received by Cardinal within thirty (30) days after completion of the applicable service. In no event shall Cardinal be liable for incidental or consequential damage including, without limitation, business interruptions, loss of use, or loss of profits incurred by client, its subsidiaries, affiliates or successors arising out of or related to the performance of the services hereunder by Cardinal, regardless of whether such claim is based upon any of the above stated reasons or otherwise. Results relate only to the samples identified above. This report shall not be reproduced except in full with written approval of Cardinal Laboratories.

Celey D. Keene, Lab Director/Quality Manager



PHONE (575) 393-2326 ° 101 E. MARLAND ° HOBBS, NM 88240

Analytical Results For:

ENSOLUM
3122 NATIONAL PARKS HWY
CARLSBAD NM, 88220

Project: MUY WAYNO RECYCLING FACILITY
Project Number: 03C1558347
Project Manager: DAVID MCINNIS
Fax To:

Reported:
07-May-24 16:23

PH 01 0.5'
H242290-01 (Soil)

Analyte	Result	MDL	Reporting Limit	Units	Dilution	Batch	Analyst	Analyzed	Method	Notes
---------	--------	-----	-----------------	-------	----------	-------	---------	----------	--------	-------

Cardinal Laboratories**Inorganic Compounds**

Chloride	1860		16.0	mg/kg	4	4050235	AC	02-May-24	4500-Cl-B	
-----------------	-------------	--	------	-------	---	---------	----	-----------	-----------	--

Volatile Organic Compounds by EPA Method 8021

Benzene*	<0.050	0.050	mg/kg	50	4050104	JH	01-May-24	8021B	
Toluene*	<0.050	0.050	mg/kg	50	4050104	JH	01-May-24	8021B	
Ethylbenzene*	<0.050	0.050	mg/kg	50	4050104	JH	01-May-24	8021B	
Total Xylenes*	<0.150	0.150	mg/kg	50	4050104	JH	01-May-24	8021B	
Total BTEX	<0.300	0.300	mg/kg	50	4050104	JH	01-May-24	8021B	

Surrogate: 4-Bromofluorobenzene (PID)	123 %	71.5-134	4050104	JH	01-May-24	8021B	
---------------------------------------	-------	----------	---------	----	-----------	-------	--

Petroleum Hydrocarbons by GC FID

GRO C6-C10*	<10.0	10.0	mg/kg	1	4043020	MS	01-May-24	8015B	
DRO >C10-C28*	<10.0	10.0	mg/kg	1	4043020	MS	01-May-24	8015B	
EXT DRO >C28-C36	<10.0	10.0	mg/kg	1	4043020	MS	01-May-24	8015B	

Surrogate: 1-Chlorooctane	97.2 %	48.2-134	4043020	MS	01-May-24	8015B	
---------------------------	--------	----------	---------	----	-----------	-------	--

Surrogate: 1-Chlorooctadecane	114 %	49.1-148	4043020	MS	01-May-24	8015B	
-------------------------------	-------	----------	---------	----	-----------	-------	--

Cardinal Laboratories

*=Accredited Analyte

PLEASE NOTE: Liability and Damages. Cardinal's liability and client's exclusive remedy for any claim arising, whether based in contract or tort, shall be limited to the amount paid by client for analyses. All claims, including those for negligence or any other cause whatsoever shall be deemed waived unless made in writing and received by Cardinal within thirty (30) days after completion of the applicable service. In no event shall Cardinal be liable for incidental or consequential damage including, without limitation, business interruptions, loss of use, or loss of profits incurred by client, its subsidiaries, affiliates or successors arising out of or related to the performance of the services hereunder by Cardinal, regardless of whether such claim is based upon any of the above stated reasons or otherwise. Results relate only to the samples identified above. This report shall not be reproduced except in full with written approval of Cardinal Laboratories.

Celey D. Keene, Lab Director/Quality Manager



PHONE (575) 393-2326 ° 101 E. MARLAND ° HOBBS, NM 88240

Analytical Results For:

ENSOLUM
3122 NATIONAL PARKS HWY
CARLSBAD NM, 88220

Project: MUY WAYNO RECYCLING FACILITY
Project Number: 03C1558347
Project Manager: DAVID MCINNIS
Fax To:

Reported:
07-May-24 16:23

PH 01 B 2'
H242290-02 (Soil)

Analyte	Result	MDL	Reporting Limit	Units	Dilution	Batch	Analyst	Analyzed	Method	Notes
---------	--------	-----	-----------------	-------	----------	-------	---------	----------	--------	-------

Cardinal Laboratories**Inorganic Compounds**

Chloride	240		16.0	mg/kg	4	4050235	AC	02-May-24	4500-Cl-B	
-----------------	------------	--	------	-------	---	---------	----	-----------	-----------	--

Volatile Organic Compounds by EPA Method 8021

Benzene*	<0.050		0.050	mg/kg	50	4050104	JH	02-May-24	8021B	
Toluene*	<0.050		0.050	mg/kg	50	4050104	JH	02-May-24	8021B	
Ethylbenzene*	<0.050		0.050	mg/kg	50	4050104	JH	02-May-24	8021B	
Total Xylenes*	<0.150		0.150	mg/kg	50	4050104	JH	02-May-24	8021B	
Total BTEX	<0.300		0.300	mg/kg	50	4050104	JH	02-May-24	8021B	

<i>Surrogate: 4-Bromofluorobenzene (PID)</i>			120 %		71.5-134	4050104	JH	02-May-24	8021B	
--	--	--	-------	--	----------	---------	----	-----------	-------	--

Petroleum Hydrocarbons by GC FID

GRO C6-C10*	<10.0		10.0	mg/kg	1	4043020	MS	01-May-24	8015B	
DRO >C10-C28*	<10.0		10.0	mg/kg	1	4043020	MS	01-May-24	8015B	
EXT DRO >C28-C36	<10.0		10.0	mg/kg	1	4043020	MS	01-May-24	8015B	

<i>Surrogate: 1-Chlorooctane</i>			97.2 %		48.2-134	4043020	MS	01-May-24	8015B	
----------------------------------	--	--	--------	--	----------	---------	----	-----------	-------	--

<i>Surrogate: 1-Chlorooctadecane</i>			114 %		49.1-148	4043020	MS	01-May-24	8015B	
--------------------------------------	--	--	-------	--	----------	---------	----	-----------	-------	--

Cardinal Laboratories

*=Accredited Analyte

PLEASE NOTE: Liability and Damages. Cardinal's liability and client's exclusive remedy for any claim arising, whether based in contract or tort, shall be limited to the amount paid by client for analyses. All claims, including those for negligence or any other cause whatsoever shall be deemed waived unless made in writing and received by Cardinal within thirty (30) days after completion of the applicable service. In no event shall Cardinal be liable for incidental or consequential damage including, without limitation, business interruptions, loss of use, or loss of profits incurred by client, its subsidiaries, affiliates or successors arising out of or related to the performance of the services hereunder by Cardinal, regardless of whether such claim is based upon any of the above stated reasons or otherwise. Results relate only to the samples identified above. This report shall not be reproduced except in full with written approval of Cardinal Laboratories.

Celey D. Keene, Lab Director/Quality Manager



PHONE (575) 393-2326 ° 101 E. MARLAND ° HOBBS, NM 88240

Analytical Results For:

ENSOLUM
3122 NATIONAL PARKS HWY
CARLSBAD NM, 88220

Project: MUY WAYNO RECYCLING FACILITY
Project Number: 03C1558347
Project Manager: DAVID MCINNIS
Fax To:

Reported:
07-May-24 16:23

SS 01 0.5'
H242290-03 (Soil)

Analyte	Result	MDL	Reporting Limit	Units	Dilution	Batch	Analyst	Analyzed	Method	Notes
---------	--------	-----	-----------------	-------	----------	-------	---------	----------	--------	-------

Cardinal Laboratories**Inorganic Compounds**

Chloride	224		16.0	mg/kg	4	4050235	AC	02-May-24	4500-Cl-B	
-----------------	------------	--	------	-------	---	---------	----	-----------	-----------	--

Volatile Organic Compounds by EPA Method 8021

Benzene*	<0.050	0.050	mg/kg	50	4050104	JH	02-May-24	8021B	
Toluene*	<0.050	0.050	mg/kg	50	4050104	JH	02-May-24	8021B	
Ethylbenzene*	<0.050	0.050	mg/kg	50	4050104	JH	02-May-24	8021B	
Total Xylenes*	<0.150	0.150	mg/kg	50	4050104	JH	02-May-24	8021B	
Total BTEX	<0.300	0.300	mg/kg	50	4050104	JH	02-May-24	8021B	

<i>Surrogate: 4-Bromofluorobenzene (PID)</i>	<i>117 %</i>	<i>71.5-134</i>	<i>4050104</i>	<i>JH</i>	<i>02-May-24</i>	<i>8021B</i>	
--	--------------	-----------------	----------------	-----------	------------------	--------------	--

Petroleum Hydrocarbons by GC FID

GRO C6-C10*	<10.0	10.0	mg/kg	1	4043021	MS	01-May-24	8015B	
DRO >C10-C28*	<10.0	10.0	mg/kg	1	4043021	MS	01-May-24	8015B	
EXT DRO >C28-C36	<10.0	10.0	mg/kg	1	4043021	MS	01-May-24	8015B	

<i>Surrogate: 1-Chlorooctane</i>	<i>103 %</i>	<i>48.2-134</i>	<i>4043021</i>	<i>MS</i>	<i>01-May-24</i>	<i>8015B</i>	
----------------------------------	--------------	-----------------	----------------	-----------	------------------	--------------	--

<i>Surrogate: 1-Chlorooctadecane</i>	<i>98.7 %</i>	<i>49.1-148</i>	<i>4043021</i>	<i>MS</i>	<i>01-May-24</i>	<i>8015B</i>	
--------------------------------------	---------------	-----------------	----------------	-----------	------------------	--------------	--

Cardinal Laboratories

*=Accredited Analyte

PLEASE NOTE: Liability and Damages. Cardinal's liability and client's exclusive remedy for any claim arising, whether based in contract or tort, shall be limited to the amount paid by client for analyses. All claims, including those for negligence or any other cause whatsoever shall be deemed waived unless made in writing and received by Cardinal within thirty (30) days after completion of the applicable service. In no event shall Cardinal be liable for incidental or consequential damage including, without limitation, business interruptions, loss of use, or loss of profits incurred by client, its subsidiaries, affiliates or successors arising out of or related to the performance of the services hereunder by Cardinal, regardless of whether such claim is based upon any of the above stated reasons or otherwise. Results relate only to the samples identified above. This report shall not be reproduced except in full with written approval of Cardinal Laboratories.

Celey D. Keene, Lab Director/Quality Manager



PHONE (575) 393-2326 ° 101 E. MARLAND ° HOBBS, NM 88240

Analytical Results For:

ENSOLUM
3122 NATIONAL PARKS HWY
CARLSBAD NM, 88220

Project: MUY WAYNO RECYCLING FACILITY
Project Number: 03C1558347
Project Manager: DAVID MCINNIS
Fax To:

Reported:
07-May-24 16:23

SS 02 0.5'
H242290-04 (Soil)

Analyte	Result	MDL	Reporting Limit	Units	Dilution	Batch	Analyst	Analyzed	Method	Notes
---------	--------	-----	-----------------	-------	----------	-------	---------	----------	--------	-------

Cardinal Laboratories**Inorganic Compounds**

Chloride	240		16.0	mg/kg	4	4050235	AC	02-May-24	4500-Cl-B	
----------	-----	--	------	-------	---	---------	----	-----------	-----------	--

Volatile Organic Compounds by EPA Method 8021

Benzene*	<0.050		0.050	mg/kg	50	4050104	JH	02-May-24	8021B	
Toluene*	<0.050		0.050	mg/kg	50	4050104	JH	02-May-24	8021B	
Ethylbenzene*	<0.050		0.050	mg/kg	50	4050104	JH	02-May-24	8021B	
Total Xylenes*	<0.150		0.150	mg/kg	50	4050104	JH	02-May-24	8021B	
Total BTEX	<0.300		0.300	mg/kg	50	4050104	JH	02-May-24	8021B	

Surrogate: 4-Bromofluorobenzene (PID)			117 %		71.5-134	4050104	JH	02-May-24	8021B	
---------------------------------------	--	--	-------	--	----------	---------	----	-----------	-------	--

Petroleum Hydrocarbons by GC FID

GRO C6-C10*	<10.0		10.0	mg/kg	1	4043021	MS	01-May-24	8015B	
DRO >C10-C28*	<10.0		10.0	mg/kg	1	4043021	MS	01-May-24	8015B	
EXT DRO >C28-C36	<10.0		10.0	mg/kg	1	4043021	MS	01-May-24	8015B	

Surrogate: 1-Chlorooctane			99.8 %		48.2-134	4043021	MS	01-May-24	8015B	
---------------------------	--	--	--------	--	----------	---------	----	-----------	-------	--

Surrogate: 1-Chlorooctadecane			96.1 %		49.1-148	4043021	MS	01-May-24	8015B	
-------------------------------	--	--	--------	--	----------	---------	----	-----------	-------	--

Cardinal Laboratories

*=Accredited Analyte

PLEASE NOTE: Liability and Damages. Cardinal's liability and client's exclusive remedy for any claim arising, whether based in contract or tort, shall be limited to the amount paid by client for analyses. All claims, including those for negligence or any other cause whatsoever shall be deemed waived unless made in writing and received by Cardinal within thirty (30) days after completion of the applicable service. In no event shall Cardinal be liable for incidental or consequential damage including, without limitation, business interruptions, loss of use, or loss of profits incurred by client, its subsidiaries, affiliates or successors arising out of or related to the performance of the services hereunder by Cardinal, regardless of whether such claim is based upon any of the above stated reasons or otherwise. Results relate only to the samples identified above. This report shall not be reproduced except in full with written approval of Cardinal Laboratories.

Celey D. Keene, Lab Director/Quality Manager



PHONE (575) 393-2326 ° 101 E. MARLAND ° HOBBS, NM 88240

Analytical Results For:

ENSOLUM
3122 NATIONAL PARKS HWY
CARLSBAD NM, 88220

Project: MUY WAYNO RECYCLING FACILITY
Project Number: 03C1558347
Project Manager: DAVID MCINNIS
Fax To:

Reported:
07-May-24 16:23

SS 03 0.5'
H242290-05 (Soil)

Analyte	Result	MDL	Reporting Limit	Units	Dilution	Batch	Analyst	Analyzed	Method	Notes
---------	--------	-----	-----------------	-------	----------	-------	---------	----------	--------	-------

Cardinal Laboratories**Inorganic Compounds**

Chloride	192		16.0	mg/kg	4	4050235	AC	02-May-24	4500-Cl-B	
-----------------	------------	--	------	-------	---	---------	----	-----------	-----------	--

Volatile Organic Compounds by EPA Method 8021

Benzene*	<0.050	0.050	mg/kg	50	4050104	JH	02-May-24	8021B	
Toluene*	<0.050	0.050	mg/kg	50	4050104	JH	02-May-24	8021B	
Ethylbenzene*	<0.050	0.050	mg/kg	50	4050104	JH	02-May-24	8021B	
Total Xylenes*	<0.150	0.150	mg/kg	50	4050104	JH	02-May-24	8021B	
Total BTEX	<0.300	0.300	mg/kg	50	4050104	JH	02-May-24	8021B	

<i>Surrogate: 4-Bromofluorobenzene (PID)</i>		120 %		71.5-134	4050104	JH	02-May-24	8021B	
--	--	-------	--	----------	---------	----	-----------	-------	--

Petroleum Hydrocarbons by GC FID

GRO C6-C10*	<10.0	10.0	mg/kg	1	4043021	MS	01-May-24	8015B	
DRO >C10-C28*	<10.0	10.0	mg/kg	1	4043021	MS	01-May-24	8015B	
EXT DRO >C28-C36	<10.0	10.0	mg/kg	1	4043021	MS	01-May-24	8015B	

<i>Surrogate: 1-Chlorooctane</i>		98.6 %		48.2-134	4043021	MS	01-May-24	8015B	
----------------------------------	--	--------	--	----------	---------	----	-----------	-------	--

<i>Surrogate: 1-Chlorooctadecane</i>		94.9 %		49.1-148	4043021	MS	01-May-24	8015B	
--------------------------------------	--	--------	--	----------	---------	----	-----------	-------	--

Cardinal Laboratories

*=Accredited Analyte

PLEASE NOTE: Liability and Damages. Cardinal's liability and client's exclusive remedy for any claim arising, whether based in contract or tort, shall be limited to the amount paid by client for analyses. All claims, including those for negligence or any other cause whatsoever shall be deemed waived unless made in writing and received by Cardinal within thirty (30) days after completion of the applicable service. In no event shall Cardinal be liable for incidental or consequential damage including, without limitation, business interruptions, loss of use, or loss of profits incurred by client, its subsidiaries, affiliates or successors arising out of or related to the performance of the services hereunder by Cardinal, regardless of whether such claim is based upon any of the above stated reasons or otherwise. Results relate only to the samples identified above. This report shall not be reproduced except in full with written approval of Cardinal Laboratories.

Celey D. Keene, Lab Director/Quality Manager



PHONE (575) 393-2326 ° 101 E. MARLAND ° HOBBS, NM 88240

Analytical Results For:

ENSOLUM
3122 NATIONAL PARKS HWY
CARLSBAD NM, 88220

Project: MUY WAYNO RECYCLING FACILITY
Project Number: 03C1558347
Project Manager: DAVID MCINNIS
Fax To:

Reported:
07-May-24 16:23

SS 04 0.5'
H242290-06 (Soil)

Analyte	Result	MDL	Reporting Limit	Units	Dilution	Batch	Analyst	Analyzed	Method	Notes
---------	--------	-----	-----------------	-------	----------	-------	---------	----------	--------	-------

Cardinal Laboratories**Inorganic Compounds**

Chloride	128		16.0	mg/kg	4	4050235	AC	02-May-24	4500-Cl-B	
-----------------	------------	--	------	-------	---	---------	----	-----------	-----------	--

Volatile Organic Compounds by EPA Method 8021

Benzene*	<0.050	0.050	mg/kg	50	4050104	JH	02-May-24	8021B
Toluene*	<0.050	0.050	mg/kg	50	4050104	JH	02-May-24	8021B
Ethylbenzene*	<0.050	0.050	mg/kg	50	4050104	JH	02-May-24	8021B
Total Xylenes*	<0.150	0.150	mg/kg	50	4050104	JH	02-May-24	8021B
Total BTEX	<0.300	0.300	mg/kg	50	4050104	JH	02-May-24	8021B

Surrogate: 4-Bromofluorobenzene (PID)	115 %	71.5-134	4050104	JH	02-May-24	8021B
---------------------------------------	-------	----------	---------	----	-----------	-------

Petroleum Hydrocarbons by GC FID

GRO C6-C10*	<10.0	10.0	mg/kg	1	4043021	MS	01-May-24	8015B
DRO >C10-C28*	<10.0	10.0	mg/kg	1	4043021	MS	01-May-24	8015B
EXT DRO >C28-C36	<10.0	10.0	mg/kg	1	4043021	MS	01-May-24	8015B

Surrogate: 1-Chlorooctane	89.8 %	48.2-134	4043021	MS	01-May-24	8015B
---------------------------	--------	----------	---------	----	-----------	-------

Surrogate: 1-Chlorooctadecane	85.7 %	49.1-148	4043021	MS	01-May-24	8015B
-------------------------------	--------	----------	---------	----	-----------	-------

Cardinal Laboratories

*=Accredited Analyte

PLEASE NOTE: Liability and Damages. Cardinal's liability and client's exclusive remedy for any claim arising, whether based in contract or tort, shall be limited to the amount paid by client for analyses. All claims, including those for negligence or any other cause whatsoever shall be deemed waived unless made in writing and received by Cardinal within thirty (30) days after completion of the applicable service. In no event shall Cardinal be liable for incidental or consequential damage including, without limitation, business interruptions, loss of use, or loss of profits incurred by client, its subsidiaries, affiliates or successors arising out of or related to the performance of the services hereunder by Cardinal, regardless of whether such claim is based upon any of the above stated reasons or otherwise. Results relate only to the samples identified above. This report shall not be reproduced except in full with written approval of Cardinal Laboratories.

Celey D. Keene, Lab Director/Quality Manager



PHONE (575) 393-2326 ° 101 E. MARLAND ° HOBBS, NM 88240

Analytical Results For:

ENSOLUM
3122 NATIONAL PARKS HWY
CARLSBAD NM, 88220

Project: MUY WAYNO RECYCLING FACILITY
Project Number: 03C1558347
Project Manager: DAVID MCINNIS
Fax To:

Reported:
07-May-24 16:23

SS 05 0.5'
H242290-07 (Soil)

Analyte	Result	MDL	Reporting Limit	Units	Dilution	Batch	Analyst	Analyzed	Method	Notes
---------	--------	-----	-----------------	-------	----------	-------	---------	----------	--------	-------

Cardinal Laboratories**Inorganic Compounds**

Chloride	240		16.0	mg/kg	4	4050235	AC	02-May-24	4500-Cl-B	
----------	-----	--	------	-------	---	---------	----	-----------	-----------	--

Volatile Organic Compounds by EPA Method 8021

Benzene*	<0.050		0.050	mg/kg	50	4050104	JH	02-May-24	8021B	
Toluene*	<0.050		0.050	mg/kg	50	4050104	JH	02-May-24	8021B	
Ethylbenzene*	<0.050		0.050	mg/kg	50	4050104	JH	02-May-24	8021B	
Total Xylenes*	<0.150		0.150	mg/kg	50	4050104	JH	02-May-24	8021B	
Total BTEX	<0.300		0.300	mg/kg	50	4050104	JH	02-May-24	8021B	

Surrogate: 4-Bromofluorobenzene (PID)			125 %		71.5-134	4050104	JH	02-May-24	8021B	
---------------------------------------	--	--	-------	--	----------	---------	----	-----------	-------	--

Petroleum Hydrocarbons by GC FID

GRO C6-C10*	<10.0		10.0	mg/kg	1	4043021	MS	01-May-24	8015B	
DRO >C10-C28*	<10.0		10.0	mg/kg	1	4043021	MS	01-May-24	8015B	
EXT DRO >C28-C36	<10.0		10.0	mg/kg	1	4043021	MS	01-May-24	8015B	

Surrogate: 1-Chlorooctane			108 %		48.2-134	4043021	MS	01-May-24	8015B	
---------------------------	--	--	-------	--	----------	---------	----	-----------	-------	--

Surrogate: 1-Chlorooctadecane			106 %		49.1-148	4043021	MS	01-May-24	8015B	
-------------------------------	--	--	-------	--	----------	---------	----	-----------	-------	--

Cardinal Laboratories

*=Accredited Analyte

PLEASE NOTE: Liability and Damages. Cardinal's liability and client's exclusive remedy for any claim arising, whether based in contract or tort, shall be limited to the amount paid by client for analyses. All claims, including those for negligence or any other cause whatsoever shall be deemed waived unless made in writing and received by Cardinal within thirty (30) days after completion of the applicable service. In no event shall Cardinal be liable for incidental or consequential damage including, without limitation, business interruptions, loss of use, or loss of profits incurred by client, its subsidiaries, affiliates or successors arising out of or related to the performance of the services hereunder by Cardinal, regardless of whether such claim is based upon any of the above stated reasons or otherwise. Results relate only to the samples identified above. This report shall not be reproduced except in full with written approval of Cardinal Laboratories.

Celey D. Keene, Lab Director/Quality Manager



PHONE (575) 393-2326 ° 101 E. MARLAND ° HOBBS, NM 88240

Analytical Results For:

ENSOLUM
3122 NATIONAL PARKS HWY
CARLSBAD NM, 88220

Project: MUY WAYNO RECYCLING FACILITY
Project Number: 03C1558347
Project Manager: DAVID MCINNIS
Fax To:

Reported:
07-May-24 16:23

SS 06 0.5'
H242290-08 (Soil)

Analyte	Result	MDL	Reporting Limit	Units	Dilution	Batch	Analyst	Analyzed	Method	Notes
---------	--------	-----	-----------------	-------	----------	-------	---------	----------	--------	-------

Cardinal Laboratories**Inorganic Compounds**

Chloride	400		16.0	mg/kg	4	4050235	AC	02-May-24	4500-Cl-B	
-----------------	------------	--	------	-------	---	---------	----	-----------	-----------	--

Volatile Organic Compounds by EPA Method 8021

Benzene*	<0.050		0.050	mg/kg	50	4050104	JH	02-May-24	8021B	
Toluene*	<0.050		0.050	mg/kg	50	4050104	JH	02-May-24	8021B	
Ethylbenzene*	<0.050		0.050	mg/kg	50	4050104	JH	02-May-24	8021B	
Total Xylenes*	<0.150		0.150	mg/kg	50	4050104	JH	02-May-24	8021B	
Total BTEX	<0.300		0.300	mg/kg	50	4050104	JH	02-May-24	8021B	

<i>Surrogate: 4-Bromofluorobenzene (PID)</i>			118 %		71.5-134	4050104	JH	02-May-24	8021B	
--	--	--	-------	--	----------	---------	----	-----------	-------	--

Petroleum Hydrocarbons by GC FID

GRO C6-C10*	<10.0		10.0	mg/kg	1	4043021	MS	01-May-24	8015B	
DRO >C10-C28*	<10.0		10.0	mg/kg	1	4043021	MS	01-May-24	8015B	
EXT DRO >C28-C36	<10.0		10.0	mg/kg	1	4043021	MS	01-May-24	8015B	

<i>Surrogate: 1-Chlorooctane</i>			89.8 %		48.2-134	4043021	MS	01-May-24	8015B	
----------------------------------	--	--	--------	--	----------	---------	----	-----------	-------	--

<i>Surrogate: 1-Chlorooctadecane</i>			87.1 %		49.1-148	4043021	MS	01-May-24	8015B	
--------------------------------------	--	--	--------	--	----------	---------	----	-----------	-------	--

Cardinal Laboratories

*=Accredited Analyte

PLEASE NOTE: Liability and Damages. Cardinal's liability and client's exclusive remedy for any claim arising, whether based in contract or tort, shall be limited to the amount paid by client for analyses. All claims, including those for negligence or any other cause whatsoever shall be deemed waived unless made in writing and received by Cardinal within thirty (30) days after completion of the applicable service. In no event shall Cardinal be liable for incidental or consequential damage including, without limitation, business interruptions, loss of use, or loss of profits incurred by client, its subsidiaries, affiliates or successors arising out of or related to the performance of the services hereunder by Cardinal, regardless of whether such claim is based upon any of the above stated reasons or otherwise. Results relate only to the samples identified above. This report shall not be reproduced except in full with written approval of Cardinal Laboratories.

Celey D. Keene, Lab Director/Quality Manager



PHONE (575) 393-2326 • 101 E. MARLAND • HOBBS, NM 88240

Analytical Results For:

ENSOLUM
3122 NATIONAL PARKS HWY
CARLSBAD NM, 88220

Project: MUY WAYNO RECYCLING FACILITY
Project Number: 03C1558347
Project Manager: DAVID MCINNIS
Fax To:

Reported:
07-May-24 16:23

Inorganic Compounds - Quality Control**Cardinal Laboratories**

Analyte	Result	Reporting Limit	Units	Spike Level	Source Result	%REC Limits	RPD	RPD Limit	Notes
Batch 4050235 - 1:4 DI Water									
Blank (4050235-BLK1)					Prepared & Analyzed: 02-May-24				
Chloride	ND	16.0	mg/kg						
LCS (4050235-BS1)					Prepared & Analyzed: 02-May-24				
Chloride	416	16.0	mg/kg	400	104	80-120			
LCS Dup (4050235-BSD1)					Prepared & Analyzed: 02-May-24				
Chloride	432	16.0	mg/kg	400	108	80-120	3.77	20	

Cardinal Laboratories

*=Accredited Analyte

PLEASE NOTE: Liability and Damages. Cardinal's liability and client's exclusive remedy for any claim arising, whether based in contract or tort, shall be limited to the amount paid by client for analyses. All claims, including those for negligence or any other cause whatsoever shall be deemed waived unless made in writing and received by Cardinal within thirty (30) days after completion of the applicable service. In no event shall Cardinal be liable for incidental or consequential damage including, without limitation, business interruptions, loss of use, or loss of profits incurred by client, its subsidiaries, affiliates or successors arising out of or related to the performance of the services hereunder by Cardinal, regardless of whether such claim is based upon any of the above stated reasons or otherwise. Results relate only to the samples identified above. This report shall not be reproduced except in full with written approval of Cardinal Laboratories.

Celey D. Keene, Lab Director/Quality Manager



PHONE (575) 393-2326 • 101 E. MARLAND • HOBBS, NM 88240

Analytical Results For:

ENSOLUM
3122 NATIONAL PARKS HWY
CARLSBAD NM, 88220

Project: MUY WAYNO RECYCLING FACILITY
Project Number: 03C1558347
Project Manager: DAVID MCINNIS
Fax To:

Reported:
07-May-24 16:23

Volatile Organic Compounds by EPA Method 8021 - Quality Control**Cardinal Laboratories**

Analyte	Result	Reporting Limit	Units	Spike Level	Source Result	%REC	%REC Limits	RPD	RPD Limit	Notes
---------	--------	--------------------	-------	----------------	------------------	------	----------------	-----	--------------	-------

Batch 4050104 - Volatiles**Blank (4050104-BLK1)**

Prepared & Analyzed: 01-May-24

Benzene	ND	0.050	mg/kg							
Toluene	ND	0.050	mg/kg							
Ethylbenzene	ND	0.050	mg/kg							
Total Xylenes	ND	0.150	mg/kg							
Total BTEX	ND	0.300	mg/kg							
Surrogate: 4-Bromofluorobenzene (PID)	0.0592		mg/kg	0.0500		118	71.5-134			

LCS (4050104-BS1)

Prepared & Analyzed: 01-May-24

Benzene	2.25	0.050	mg/kg	2.00		113	82.8-130			
Toluene	2.25	0.050	mg/kg	2.00		113	86-128			
Ethylbenzene	2.36	0.050	mg/kg	2.00		118	85.9-128			
m,p-Xylene	4.70	0.100	mg/kg	4.00		117	89-129			
o-Xylene	2.35	0.050	mg/kg	2.00		117	86.1-125			
Total Xylenes	7.04	0.150	mg/kg	6.00		117	88.2-128			
Surrogate: 4-Bromofluorobenzene (PID)	0.0545		mg/kg	0.0500		109	71.5-134			

LCS Dup (4050104-BSD1)

Prepared & Analyzed: 01-May-24

Benzene	2.07	0.050	mg/kg	2.00		104	82.8-130	8.40	15.8	
Toluene	2.12	0.050	mg/kg	2.00		106	86-128	6.05	15.9	
Ethylbenzene	2.21	0.050	mg/kg	2.00		111	85.9-128	6.68	16	
m,p-Xylene	4.41	0.100	mg/kg	4.00		110	89-129	6.23	16.2	
o-Xylene	2.20	0.050	mg/kg	2.00		110	86.1-125	6.67	16.7	
Total Xylenes	6.61	0.150	mg/kg	6.00		110	88.2-128	6.38	16.3	
Surrogate: 4-Bromofluorobenzene (PID)	0.0542		mg/kg	0.0500		108	71.5-134			

Cardinal Laboratories

*=Accredited Analyte

PLEASE NOTE: Liability and Damages. Cardinal's liability and client's exclusive remedy for any claim arising, whether based in contract or tort, shall be limited to the amount paid by client for analyses. All claims, including those for negligence or any other cause whatsoever shall be deemed waived unless made in writing and received by Cardinal within thirty (30) days after completion of the applicable service. In no event shall Cardinal be liable for incidental or consequential damage including, without limitation, business interruptions, loss of use, or loss of profits incurred by client, its subsidiaries, affiliates or successors arising out of or related to the performance of the services hereunder by Cardinal, regardless of whether such claim is based upon any of the above stated reasons or otherwise. Results relate only to the samples identified above. This report shall not be reproduced except in full with written approval of Cardinal Laboratories.

Celey D. Keene, Lab Director/Quality Manager



PHONE (575) 393-2326 • 101 E. MARLAND • HOBBS, NM 88240

Analytical Results For:

ENSOLUM
3122 NATIONAL PARKS HWY
CARLSBAD NM, 88220

Project: MUY WAYNO RECYCLING FACILITY
Project Number: 03C1558347
Project Manager: DAVID MCINNIS
Fax To:

Reported:
07-May-24 16:23

Petroleum Hydrocarbons by GC FID - Quality Control**Cardinal Laboratories**

Analyte	Result	Reporting Limit	Units	Spike Level	Source Result	%REC Limits	RPD	RPD Limit	Notes
---------	--------	--------------------	-------	----------------	------------------	----------------	-----	--------------	-------

Batch 4043020 - General Prep - Organics**Blank (4043020-BLK1)**

Prepared: 30-Apr-24 Analyzed: 01-May-24

GRO C6-C10	ND	10.0	mg/kg						
DRO >C10-C28	ND	10.0	mg/kg						
EXT DRO >C28-C36	ND	10.0	mg/kg						
Surrogate: 1-Chlorooctane	45.7		mg/kg	50.0		91.4	48.2-134		
Surrogate: 1-Chlorooctadecane	49.7		mg/kg	50.0		99.4	49.1-148		

LCS (4043020-BS1)

Prepared: 30-Apr-24 Analyzed: 01-May-24

GRO C6-C10	190	10.0	mg/kg	200		95.0	66.4-123		
DRO >C10-C28	186	10.0	mg/kg	200		93.1	66.5-118		
Total TPH C6-C28	376	10.0	mg/kg	400		94.1	77.6-123		
Surrogate: 1-Chlorooctane	49.7		mg/kg	50.0		99.4	48.2-134		
Surrogate: 1-Chlorooctadecane	51.3		mg/kg	50.0		103	49.1-148		

LCS Dup (4043020-BS1)

Prepared: 30-Apr-24 Analyzed: 01-May-24

GRO C6-C10	195	10.0	mg/kg	200		97.7	66.4-123	2.75	17.7
DRO >C10-C28	195	10.0	mg/kg	200		97.5	66.5-118	4.64	21
Total TPH C6-C28	390	10.0	mg/kg	400		97.6	77.6-123	3.69	18.5
Surrogate: 1-Chlorooctane	51.6		mg/kg	50.0		103	48.2-134		
Surrogate: 1-Chlorooctadecane	54.1		mg/kg	50.0		108	49.1-148		

Batch 4043021 - General Prep - Organics**Blank (4043021-BLK1)**

Prepared: 30-Apr-24 Analyzed: 01-May-24

GRO C6-C10	ND	10.0	mg/kg						
DRO >C10-C28	ND	10.0	mg/kg						
EXT DRO >C28-C36	ND	10.0	mg/kg						
Surrogate: 1-Chlorooctane	60.3		mg/kg	50.0		121	48.2-134		
Surrogate: 1-Chlorooctadecane	59.8		mg/kg	50.0		120	49.1-148		

Cardinal Laboratories

*=Accredited Analyte

PLEASE NOTE: Liability and Damages. Cardinal's liability and client's exclusive remedy for any claim arising, whether based in contract or tort, shall be limited to the amount paid by client for analyses. All claims, including those for negligence or any other cause whatsoever shall be deemed waived unless made in writing and received by Cardinal within thirty (30) days after completion of the applicable service. In no event shall Cardinal be liable for incidental or consequential damage including, without limitation, business interruptions, loss of use, or loss of profits incurred by client, its subsidiaries, affiliates or successors arising out of or related to the performance of the services hereunder by Cardinal, regardless of whether such claim is based upon any of the above stated reasons or otherwise. Results relate only to the samples identified above. This report shall not be reproduced except in full with written approval of Cardinal Laboratories.

Celey D. Keene, Lab Director/Quality Manager



PHONE (575) 393-2326 ° 101 E. MARLAND ° HOBBS, NM 88240

Analytical Results For:

ENSOLUM
3122 NATIONAL PARKS HWY
CARLSBAD NM, 88220

Project: MUY WAYNO RECYCLING FACILITY
Project Number: 03C1558347
Project Manager: DAVID MCINNIS
Fax To:

Reported:
07-May-24 16:23

Petroleum Hydrocarbons by GC FID - Quality Control**Cardinal Laboratories**

Analyte	Result	Reporting Limit	Units	Spike Level	Source Result	%REC Limits	RPD	RPD Limit	Notes
---------	--------	--------------------	-------	----------------	------------------	----------------	-----	--------------	-------

Batch 4043021 - General Prep - Organics**LCS (4043021-BS1)**

Prepared: 30-Apr-24 Analyzed: 01-May-24

GRO C6-C10	220	10.0	mg/kg	200		110	66.4-123		
DRO >C10-C28	229	10.0	mg/kg	200		114	66.5-118		
Total TPH C6-C28	449	10.0	mg/kg	400		112	77.6-123		
Surrogate: 1-Chlorooctane	64.6		mg/kg	50.0		129	48.2-134		
Surrogate: 1-Chlorooctadecane	60.1		mg/kg	50.0		120	49.1-148		

LCS Dup (4043021-BS1)

Prepared: 30-Apr-24 Analyzed: 01-May-24

GRO C6-C10	218	10.0	mg/kg	200		109	66.4-123	0.929	17.7
DRO >C10-C28	234	10.0	mg/kg	200		117	66.5-118	2.25	21
Total TPH C6-C28	452	10.0	mg/kg	400		113	77.6-123	0.701	18.5
Surrogate: 1-Chlorooctane	62.3		mg/kg	50.0		125	48.2-134		
Surrogate: 1-Chlorooctadecane	61.1		mg/kg	50.0		122	49.1-148		

Cardinal Laboratories

*=Accredited Analyte

PLEASE NOTE: Liability and Damages. Cardinal's liability and client's exclusive remedy for any claim arising, whether based in contract or tort, shall be limited to the amount paid by client for analyses. All claims, including those for negligence or any other cause whatsoever shall be deemed waived unless made in writing and received by Cardinal within thirty (30) days after completion of the applicable service. In no event shall Cardinal be liable for incidental or consequential damage including, without limitation, business interruptions, loss of use, or loss of profits incurred by client, its subsidiaries, affiliates or successors arising out of or related to the performance of the services hereunder by Cardinal, regardless of whether such claim is based upon any of the above stated reasons or otherwise. Results relate only to the samples identified above. This report shall not be reproduced except in full with written approval of Cardinal Laboratories.

Celey D. Keene, Lab Director/Quality Manager



PHONE (575) 393-2326 ° 101 E. MARLAND ° HOBBS, NM 88240

Notes and Definitions

- ND Analyte NOT DETECTED at or above the reporting limit
- RPD Relative Percent Difference
- ** Samples not received at proper temperature of 6°C or below.
- *** Insufficient time to reach temperature.
- Chloride by SM4500Cl-B does not require samples be received at or below 6°C
Samples reported on an as received basis (wet) unless otherwise noted on report

Cardinal Laboratories

*=Accredited Analyte

PLEASE NOTE: Liability and Damages. Cardinal's liability and client's exclusive remedy for any claim arising, whether based in contract or tort, shall be limited to the amount paid by client for analyses. All claims, including those for negligence or any other cause whatsoever shall be deemed waived unless made in writing and received by Cardinal within thirty (30) days after completion of the applicable service. In no event shall Cardinal be liable for incidental or consequential damage including, without limitation, business interruptions, loss of use, or loss of profits incurred by client, its subsidiaries, affiliates or successors arising out of or related to the performance of the services hereunder by Cardinal, regardless of whether such claim is based upon any of the above stated reasons or otherwise. Results relate only to the samples identified above. This report shall not be reproduced except in full with written approval of Cardinal Laboratories.

A handwritten signature in black ink, appearing to read "Celey D. Keene".

Celey D. Keene, Lab Director/Quality Manager



101 East Marland, Hobbs, NM 88240
(575) 393-2326 FAX (575) 393-2476

CHAIN-OF-CUSTODY AND ANALYSIS REQUEST

Company Name: Ensolum, LLC

BILL TO

ANALYSIS REQUEST

Project Manager: David McInnis	P.O. #:
Address: 3122 National Parks Hwy	Company: XTO Energy
City: Carlsbad	Attn: Amy Ruth
State: NM Zip: 88220	Address: 3104 E. Greene St
Phone #: 409 454 3009	City: Carlsbad
Fax #:	State: NM Zip: 88220
Project #: 03C1558347	Project Owner:
Project Name: Mox Wayne Recycling Facility	Phone #:
Project Location: 32.14865, -103.42184	Fax #:
Sampler Name: Daniel Santillan	

Lab I.D.	Sample I.D.	Depth (feet)	(G)RAB OR (C)OMP.		MATRIX						PRESERV.		SAMPLING											
			# CONTAINERS																					
					GROUNDWATER																			
					WASTEWATER																			
					SOIL																			
					OIL																			
					SLUDGE																			
					OTHER :																			
					ACID/BASE:																			
					ICE / COOL																			
					OTHER :																			
					DATE																			
					TIME																			
424310	PH01	0.5'	1	1											X	Chlorides								
3	PH02B	2'	1	1											X	TPH								
4	SS04	0.5'													X	BTEX								
5	SS02	0.5'																						
6	SS03	0.5'																						
7	SS04	0.5'																						
8	SS05	0.5'																						
	SS06	0.5'																						

PLEASE NOTE: Liability and damages, Cardinal's liability and client's exclusive remedy for any claim arising whether based in contract or tort, shall be limited to the amount paid by the client for the analysis. All claims including those for negligence and any other cause whatsoever shall be deemed waived unless made in writing and received by Cardinal within 30 days after completion of the applicable service. In no event shall Cardinal be liable for incidental or consequential damages, including without limitation, business interruptions, loss of use, or loss of profits, incurred by client, its subsidiaries, affiliates or successors arising out of or related to the performance of services hereunder by Cardinal, regardless of whether such claim is based upon any of the above stated reasons or otherwise.

Relinquished By: <u>U D D</u>	Date: <u>4-30-24</u>	Received By: <u>Monica L. [Signature]</u>	Verbal Result: <input type="checkbox"/> Yes <input checked="" type="checkbox"/> No	Add'l Phone #: _____
Relinquished By: _____	Date: _____	Received By: _____	All Results are emailed. Please provide Email address: <u>dmcinnis@ensolum.com</u>	usant@ensolum.com
			REMARKS: <u>Cost center: 1073861001</u>	

Delivered By: (Circle One)	Observed Temp. °C <u>1.3</u>	Sample Condition	CHECKED BY: (Initials) <u>[Signature]</u>	Turnaround Time: _____	Standard	Bacteria (only)	Sample Condition
Sampler - UPS - Bus - Other:	Corrected Temp. °C _____	Cool Intact <input checked="" type="checkbox"/> Yes <input type="checkbox"/> No		Thermometer ID <u>444</u>	Rush <input checked="" type="checkbox"/>	Cool Intact <input type="checkbox"/> Yes <input type="checkbox"/> No	Observed Temp. °C _____
				Correction Factor <u>0.00</u>			Corrected Temp. °C _____

FORM-006-R-3.2 (10/07/21)

† Cardinal cannot accept verbal changes. Please email changes to celey.keene@cardinallabsnm.com



PHONE (575) 393-2326 ° 101 E. MARLAND ° HOBBS, NM 88240

September 03, 2024

DAVID MCINNIS

ENSOLUM

3122 NATIONAL PARKS HWY

CARLSBAD, NM 88220

RE: MUY WAYNO RECYCLING FACILITY

Enclosed are the results of analyses for samples received by the laboratory on 08/29/24 16:30.

Cardinal Laboratories is accredited through Texas NELAP under certificate number TX-C24-00112. Accreditation applies to drinking water, non-potable water and solid and chemical materials. All accredited analytes are denoted by an asterisk (*). For a complete list of accredited analytes and matrices visit the TCEQ website at www.tceq.texas.gov/field/qa/lab_accred_certif.html.

Cardinal Laboratories is accredited through the State of Colorado Department of Public Health and Environment for:

Method EPA 552.2	Haloacetic Acids (HAA-5)
Method EPA 524.2	Total Trihalomethanes (TTHM)
Method EPA 524.4	Regulated VOCs (V1, V2, V3)

Accreditation applies to public drinking water matrices.

This report meets NELAP requirements and is made up of a cover page, analytical results, and a copy of the original chain-of-custody. If you have any questions concerning this report, please feel free to contact me.

Sincerely,

A handwritten signature in black ink that reads "Celey D. Keene". The signature is written in a cursive, flowing style.

Celey D. Keene

Lab Director/Quality Manager



PHONE (575) 393-2326 ° 101 E. MARLAND ° HOBBS, NM 88240

Analytical Results For:

ENSOLUM
DAVID MCINNIS
3122 NATIONAL PARKS HWY
CARLSBAD NM, 88220
Fax To:

Received: 08/29/2024
Reported: 09/03/2024
Project Name: MUY WAYNO RECYCLING FACILITY
Project Number: 03C1558347
Project Location: XTO 32.14865-103.92184

Sampling Date: 08/29/2024
Sampling Type: Soil
Sampling Condition: Cool & Intact
Sample Received By: Alyssa Parras

Sample ID: FS 01 3 (H245290-01)

BTX 8021B		mg/kg		Analyzed By: JH					
Analyte	Result	Reporting Limit	Analyzed	Method Blank	BS	% Recovery	True Value QC	RPD	Qualifier
Benzene*	<0.050	0.050	08/29/2024	ND	1.96	97.8	2.00	2.34	
Toluene*	<0.050	0.050	08/29/2024	ND	2.03	101	2.00	1.61	
Ethylbenzene*	<0.050	0.050	08/29/2024	ND	2.07	104	2.00	0.00655	
Total Xylenes*	<0.150	0.150	08/29/2024	ND	6.43	107	6.00	0.556	
Total BTX	<0.300	0.300	08/29/2024	ND					

Surrogate: 4-Bromofluorobenzene (PID) 104 % 71.5-134

Chloride, SM4500Cl-B		mg/kg		Analyzed By: CT						
Analyte	Result	Reporting Limit	Analyzed	Method Blank	BS	% Recovery	True Value QC	RPD	Qualifier	
Chloride	336	16.0	08/30/2024	ND	432	108	400	3.64		

TPH 8015M		mg/kg		Analyzed By: MS					
Analyte	Result	Reporting Limit	Analyzed	Method Blank	BS	% Recovery	True Value QC	RPD	Qualifier
GRO C6-C10*	<10.0	10.0	08/30/2024	ND	209	104	200	0.336	
DRO >C10-C28*	<10.0	10.0	08/30/2024	ND	209	105	200	3.64	
EXT DRO >C28-C36	<10.0	10.0	08/30/2024	ND					

Surrogate: 1-Chlorooctane 97.8 % 48.2-134

Surrogate: 1-Chlorooctadecane 103 % 49.1-148

Cardinal Laboratories

*=Accredited Analyte

PLEASE NOTE: Liability and Damages. Cardinal's liability and client's exclusive remedy for any claim arising, whether based in contract or tort, shall be limited to the amount paid by client for analyses. All claims, including those for negligence and any other cause whatsoever shall be deemed waived unless made in writing and received by Cardinal within thirty (30) days after completion of the applicable service. In no event shall Cardinal be liable for incidental or consequential damages, including, without limitation, business interruptions, loss of use, or loss of profits incurred by client, its subsidiaries, affiliates or successors arising out of or related to the performance of the services hereunder by Cardinal, regardless of whether such claim is based upon any of the above stated reasons or otherwise. Results relate only to the samples identified above. This report shall not be reproduced except in full with written approval of Cardinal Laboratories.

Celey D. Keene, Lab Director/Quality Manager



PHONE (575) 393-2326 ° 101 E. MARLAND ° HOBBS, NM 88240

Analytical Results For:

ENSOLUM
DAVID MCINNIS
3122 NATIONAL PARKS HWY
CARLSBAD NM, 88220
Fax To:

Received: 08/29/2024
Reported: 09/03/2024
Project Name: MUY WAYNO RECYCLING FACILITY
Project Number: 03C1558347
Project Location: XTO 32.14865-103.92184

Sampling Date: 08/29/2024
Sampling Type: Soil
Sampling Condition: Cool & Intact
Sample Received By: Alyssa Parras

Sample ID: FS 02 3 (H245290-02)

BTEx 8021B		mg/kg		Analyzed By: JH					
Analyte	Result	Reporting Limit	Analyzed	Method Blank	BS	% Recovery	True Value QC	RPD	Qualifier
Benzene*	<0.050	0.050	08/29/2024	ND	1.96	97.8	2.00	2.34	
Toluene*	<0.050	0.050	08/29/2024	ND	2.03	101	2.00	1.61	
Ethylbenzene*	<0.050	0.050	08/29/2024	ND	2.07	104	2.00	0.00655	
Total Xylenes*	<0.150	0.150	08/29/2024	ND	6.43	107	6.00	0.556	
Total BTEX	<0.300	0.300	08/29/2024	ND					

Surrogate: 4-Bromofluorobenzene (PID) 104 % 71.5-134

Chloride, SM4500Cl-B		mg/kg		Analyzed By: CT					
Analyte	Result	Reporting Limit	Analyzed	Method Blank	BS	% Recovery	True Value QC	RPD	Qualifier
Chloride	272	16.0	08/30/2024	ND	432	108	400	3.64	

TPH 8015M		mg/kg		Analyzed By: MS					
Analyte	Result	Reporting Limit	Analyzed	Method Blank	BS	% Recovery	True Value QC	RPD	Qualifier
GRO C6-C10*	<10.0	10.0	08/30/2024	ND	209	104	200	0.336	
DRO >C10-C28*	<10.0	10.0	08/30/2024	ND	209	105	200	3.64	
EXT DRO >C28-C36	<10.0	10.0	08/30/2024	ND					

Surrogate: 1-Chlorooctane 107 % 48.2-134

Surrogate: 1-Chlorooctadecane 113 % 49.1-148

Cardinal Laboratories

*=Accredited Analyte

PLEASE NOTE: Liability and Damages. Cardinal's liability and client's exclusive remedy for any claim arising, whether based in contract or tort, shall be limited to the amount paid by client for analyses. All claims, including those for negligence and any other cause whatsoever shall be deemed waived unless made in writing and received by Cardinal within thirty (30) days after completion of the applicable service. In no event shall Cardinal be liable for incidental or consequential damages, including, without limitation, business interruptions, loss of use, or loss of profits incurred by client, its subsidiaries, affiliates or successors arising out of or related to the performance of the services hereunder by Cardinal, regardless of whether such claim is based upon any of the above stated reasons or otherwise. Results relate only to the samples identified above. This report shall not be reproduced except in full with written approval of Cardinal Laboratories.

Celey D. Keene, Lab Director/Quality Manager



PHONE (575) 393-2326 ° 101 E. MARLAND ° HOBBS, NM 88240

Analytical Results For:

ENSOLUM
DAVID MCINNIS
3122 NATIONAL PARKS HWY
CARLSBAD NM, 88220
Fax To:

Received: 08/29/2024
Reported: 09/03/2024
Project Name: MUY WAYNO RECYCLING FACILITY
Project Number: 03C1558347
Project Location: XTO 32.14865-103.92184

Sampling Date: 08/29/2024
Sampling Type: Soil
Sampling Condition: Cool & Intact
Sample Received By: Alyssa Parras

Sample ID: SW 01 0-3' (H245290-03)

BTEx 8021B		mg/kg		Analyzed By: JH					
Analyte	Result	Reporting Limit	Analyzed	Method Blank	BS	% Recovery	True Value QC	RPD	Qualifier
Benzene*	<0.050	0.050	08/29/2024	ND	1.96	97.8	2.00	2.34	
Toluene*	<0.050	0.050	08/29/2024	ND	2.03	101	2.00	1.61	
Ethylbenzene*	<0.050	0.050	08/29/2024	ND	2.07	104	2.00	0.00655	
Total Xylenes*	<0.150	0.150	08/29/2024	ND	6.43	107	6.00	0.556	
Total BTEX	<0.300	0.300	08/29/2024	ND					

Surrogate: 4-Bromofluorobenzene (PID) 104 % 71.5-134

Chloride, SM4500Cl-B		mg/kg		Analyzed By: CT					
Analyte	Result	Reporting Limit	Analyzed	Method Blank	BS	% Recovery	True Value QC	RPD	Qualifier
Chloride	272	16.0	08/30/2024	ND	432	108	400	3.64	

TPH 8015M		mg/kg		Analyzed By: MS					
Analyte	Result	Reporting Limit	Analyzed	Method Blank	BS	% Recovery	True Value QC	RPD	Qualifier
GRO C6-C10*	<10.0	10.0	08/30/2024	ND	209	104	200	0.336	
DRO >C10-C28*	<10.0	10.0	08/30/2024	ND	209	105	200	3.64	
EXT DRO >C28-C36	<10.0	10.0	08/30/2024	ND					

Surrogate: 1-Chlorooctane 91.8 % 48.2-134

Surrogate: 1-Chlorooctadecane 96.0 % 49.1-148

Cardinal Laboratories

*=Accredited Analyte

PLEASE NOTE: Liability and Damages. Cardinal's liability and client's exclusive remedy for any claim arising, whether based in contract or tort, shall be limited to the amount paid by client for analyses. All claims, including those for negligence and any other cause whatsoever shall be deemed waived unless made in writing and received by Cardinal within thirty (30) days after completion of the applicable service. In no event shall Cardinal be liable for incidental or consequential damages, including, without limitation, business interruptions, loss of use, or loss of profits incurred by client, its subsidiaries, affiliates or successors arising out of or related to the performance of the services hereunder by Cardinal, regardless of whether such claim is based upon any of the above stated reasons or otherwise. Results relate only to the samples identified above. This report shall not be reproduced except in full with written approval of Cardinal Laboratories.

Celey D. Keene, Lab Director/Quality Manager



PHONE (575) 393-2326 ° 101 E. MARLAND ° HOBBS, NM 88240

Notes and Definitions

ND	Analyte NOT DETECTED at or above the reporting limit
RPD	Relative Percent Difference
**	Samples not received at proper temperature of 6°C or below.
***	Insufficient time to reach temperature.
-	Chloride by SM4500Cl-B does not require samples be received at or below 6°C Samples reported on an as received basis (wet) unless otherwise noted on report

Cardinal Laboratories

*=Accredited Analyte

PLEASE NOTE: Liability and Damages. Cardinal's liability and client's exclusive remedy for any claim arising, whether based in contract or tort, shall be limited to the amount paid by client for analyses. All claims, including those for negligence and any other cause whatsoever shall be deemed waived unless made in writing and received by Cardinal within thirty (30) days after completion of the applicable service. In no event shall Cardinal be liable for incidental or consequential damages, including, without limitation, business interruptions, loss of use, or loss of profits incurred by client, its subsidiaries, affiliates or successors arising out of or related to the performance of the services hereunder by Cardinal, regardless of whether such claim is based upon any of the above stated reasons or otherwise. Results relate only to the samples identified above. This report shall not be reproduced except in full with written approval of Cardinal Laboratories.

A handwritten signature in black ink, appearing to read "Celey D. Keene".

Celey D. Keene, Lab Director/Quality Manager



101 East Marland, Hobbs, NM 88240
(575) 393-2326 FAX (575) 393-2476

CHAIN-OF-CUSTODY AND ANALYSIS REQUEST

Company Name: Ensolum, LLC

BILL TO

ANALYSIS REQUEST

Project Manager: David McAnis

P.O. #:

Address: 3122 National Parks Hwy

Company: XTO Energy

City: Midland, Colorado State: TX Zip: 79701

Attn: Amy Roth

Phone #: 409 454 3009 Fax #:

Address: 3104 Egreene St

Project #: 03C1558341

Project Owner: XTO

City: Colorado

Project Name: MayWay No Recycle Facility

State: NM Zip: 88220

Project Location: 32, 14865, -107.92144

Phone #:

Sample Name: Joshua Boley

Fax #:

FOR LAB USE ONLY

Lab I.D.

Sample I.D.

Depth (feet)

1245290

ES01
ES02
SW1

3
3
0-3'

(G)RAB OR (C)OMP.
CONTAINERS
GROUNDWATER
WASTEWATER
SOIL
OIL
SLUDGE
OTHER :
ACID/BASE:
ICE / COOL
OTHER :

DATE
TIME

Chlorides
TPH
BTEX

7/15

PLEASE NOTE: Liability and Damages, Cardinal's liability and client's exclusive remedy for any claim arising whether based in contract or tort, shall be limited to the amount paid by the client for the analyses. All claims, including those for negligence and any other cause whatsoever shall be deemed waived unless made in writing and received by Cardinal within 30 days after completion of the applicable service. In no event shall Cardinal be liable for incidental or consequential damages, including without limitation, business interruptions, loss of use, or loss of profits incurred by client, its subsidiaries, affiliates or successors arising out of or related to the performance of services hereunder by Cardinal, regardless of whether such claim is based upon any of the above stated reasons or otherwise.

Relinquished By:

Date: 8-20-24

Received By:

Verbal Result: ☐ Yes ☐ No Add'l Phone #:

All Results are emailed. Please provide Email address:

Relinquished By:

Date: 10/30

Received By:

REMARKS: Cost C: 1075861001 Incident APP 241009 44527

Delivered By: (Circle One)

Observed Temp.: 3.4i

Sample Condition Cool Intact ☒ Yes ☐ No

CHECKED BY: (Initials)

Turnaround Time: 24 hr

Standard Rush ☒

Bacteria (only) Cool Intact ☐ Yes ☐ No

Sample Condition Observed Temp.: 3.8i

Sampler - UPS - Bus - Other:

Corrected Temp.: 2.8i

Corrected Temp.: 2.8i

Thermometer ID #443 440

Correction Factor: 0.00

Corrected Temp.: 3.8i

FORM-006 R 3-2 10/07/21

† Cardinal cannot accept verbal changes. Please email changes to celey.keene@cardinallabsnm.com



PHONE (575) 393-2326 ° 101 E. MARLAND ° HOBBS, NM 88240

September 16, 2024

TACOMA MORRISSEY

ENSOLUM

3122 NATIONAL PARKS HWY

CARLSBAD, NM 88220

RE: MUY WAYNO RECYCLING FACILITY

Enclosed are the results of analyses for samples received by the laboratory on 09/12/24 15:39.

Cardinal Laboratories is accredited through Texas NELAP under certificate number TX-C24-00112. Accreditation applies to drinking water, non-potable water and solid and chemical materials. All accredited analytes are denoted by an asterisk (*). For a complete list of accredited analytes and matrices visit the TCEQ website at www.tceq.texas.gov/field/qa/lab_accred_certif.html.

Cardinal Laboratories is accredited through the State of Colorado Department of Public Health and Environment for:

Method EPA 552.2	Haloacetic Acids (HAA-5)
Method EPA 524.2	Total Trihalomethanes (TTHM)
Method EPA 524.4	Regulated VOCs (V1, V2, V3)

Accreditation applies to public drinking water matrices.

This report meets NELAP requirements and is made up of a cover page, analytical results, and a copy of the original chain-of-custody. If you have any questions concerning this report, please feel free to contact me.

Sincerely,

A handwritten signature in black ink that reads "Celey D. Keene". The signature is written in a cursive, flowing style.

Celey D. Keene

Lab Director/Quality Manager



PHONE (575) 393-2326 ° 101 E. MARLAND ° HOBBS, NM 88240

Analytical Results For:

ENSOLUM
TACOMA MORRISSEY
3122 NATIONAL PARKS HWY
CARLSBAD NM, 88220
Fax To:

Received: 09/12/2024
Reported: 09/16/2024
Project Name: MUY WAYNO RECYCLING FACILITY
Project Number: 03C1558347
Project Location: XTO 32.14865-103.92184

Sampling Date: 09/11/2024
Sampling Type: Soil
Sampling Condition: Cool & Intact
Sample Received By: Alyssa Parras

Sample ID: BF 01 0.5 (H245550-01)

BTX 8021B		mg/kg		Analyzed By: JH					
Analyte	Result	Reporting Limit	Analyzed	Method Blank	BS	% Recovery	True Value QC	RPD	Qualifier
Benzene*	<0.050	0.050	09/13/2024	ND	2.14	107	2.00	1.05	
Toluene*	<0.050	0.050	09/13/2024	ND	2.01	101	2.00	2.08	
Ethylbenzene*	<0.050	0.050	09/13/2024	ND	2.06	103	2.00	2.39	
Total Xylenes*	<0.150	0.150	09/13/2024	ND	6.25	104	6.00	2.54	
Total BTX	<0.300	0.300	09/13/2024	ND					

Surrogate: 4-Bromofluorobenzene (PID) 103 % 71.5-134

Chloride, SM4500Cl-B		mg/kg		Analyzed By: HM					
Analyte	Result	Reporting Limit	Analyzed	Method Blank	BS	% Recovery	True Value QC	RPD	Qualifier
Chloride	320	16.0	09/13/2024	ND	416	104	400	0.00	

TPH 8015M	mg/kg		Analyzed By: ms						
Analyte	Result	Reporting Limit	Analyzed	Method Blank	BS	% Recovery	True Value QC	RPD	Qualifier
GRO C6-C10*	<10.0	10.0	09/13/2024	ND	213	107	200	2.55	
DRO >C10-C28*	<10.0	10.0	09/13/2024	ND	202	101	200	4.26	
EXT DRO >C28-C36	<10.0	10.0	09/13/2024	ND					

Surrogate: 1-Chlorooctane 64.7 % 48.2-134

Surrogate: 1-Chlorooctadecane 72.2 % 49.1-148

Cardinal Laboratories

*=Accredited Analyte

PLEASE NOTE: Liability and Damages. Cardinal's liability and client's exclusive remedy for any claim arising, whether based in contract or tort, shall be limited to the amount paid by client for analyses. All claims, including those for negligence and any other cause whatsoever shall be deemed waived unless made in writing and received by Cardinal within thirty (30) days after completion of the applicable service. In no event shall Cardinal be liable for incidental or consequential damages, including, without limitation, business interruptions, loss of use, or loss of profits incurred by client, its subsidiaries, affiliates or successors arising out of or related to the performance of the services hereunder by Cardinal, regardless of whether such claim is based upon any of the above stated reasons or otherwise. Results relate only to the samples identified above. This report shall not be reproduced except in full with written approval of Cardinal Laboratories.

Celey D. Keene, Lab Director/Quality Manager



PHONE (575) 393-2326 ° 101 E. MARLAND ° HOBBS, NM 88240

Notes and Definitions

- ND Analyte NOT DETECTED at or above the reporting limit
- RPD Relative Percent Difference
- ** Samples not received at proper temperature of 6°C or below.
- *** Insufficient time to reach temperature.
- Chloride by SM4500Cl-B does not require samples be received at or below 6°C
Samples reported on an as received basis (wet) unless otherwise noted on report

Cardinal Laboratories

*=Accredited Analyte

PLEASE NOTE: Liability and Damages. Cardinal's liability and client's exclusive remedy for any claim arising, whether based in contract or tort, shall be limited to the amount paid by client for analyses. All claims, including those for negligence and any other cause whatsoever shall be deemed waived unless made in writing and received by Cardinal within thirty (30) days after completion of the applicable service. In no event shall Cardinal be liable for incidental or consequential damages, including, without limitation, business interruptions, loss of use, or loss of profits incurred by client, its subsidiaries, affiliates or successors arising out of or related to the performance of the services hereunder by Cardinal, regardless of whether such claim is based upon any of the above stated reasons or otherwise. Results relate only to the samples identified above. This report shall not be reproduced except in full with written approval of Cardinal Laboratories.

A handwritten signature in black ink, appearing to read "Celey D. Keene".

Celey D. Keene, Lab Director/Quality Manager



101 East Marland, Hobbs, NM 88240
(575) 393-2326 FAX (575) 393-2476

CHAIN-OF-CUSTODY AND ANALYSIS REQUEST

Company Name: Ensolum, LLC

BILL TO

ANALYSIS REQUEST

Project Manager: Tamara Morrissey

P.O. #:

Address: 3122 National Parks Hwy

Company: XTO Energy Inc.

City: Carlsbad

State: NM Zip: 88220

Attn: Amy Ruth

Phone #:

Fax #:

Address: 3104 E Green St

Project #: 031558347

Project Owner: XTO

City: Carlsbad

Project Name: May Wayne Recycle Facility

State: NM Zip: 88220

Project Location: 3214865, 103921864

Phone #:

Sample Name: Joshua Bayley

Fax #:

FOR LAB USE ONLY

Lab I.D. Sample I.D.

Depth (feet)

(G)RAB OR (C)OMP.

CONTAINERS

GROUNDWATER

WASTEWATER

SOIL

OIL

SLUDGE

OTHER :

ACID/BASE:

ICE / COOL

OTHER :

DATE

TIME

chloride
TPH
BTEX

PLEASE NOTE: Liability and Damages. Cardinal's liability and client's exclusive remedy for any claim arising whether based in contract or tort, shall be limited to the amount paid by the client for the analysis. All claims including those for negligence and any other cause whatsoever shall be deemed waived unless made in writing and received by Cardinal within 30 days after completion of the applicable service. In no event shall Cardinal be liable for incidental or consequential damages, including without limitation, business interruptions, loss of use, or loss of profits incurred by client, its subsidiaries, affiliates or successors arising out of or related to the performance of services hereunder by Cardinal, regardless of whether such claim is based upon any of the above stated reasons or otherwise.

Relinquished By:

Date:

Received By:

Relinquished By:

Date:

Received By:

Delivered By: (Circle One)

Observed Temp.: °C

Sample Condition

CHECKED BY: (Initials)

Turnaround Time:

Standard

Bacteria (only) Sample Condition

Observed Temp. °C

Sampler - UPS - Bus - Other:

Corrected Temp.: °C

Cool Intact

Yes

Thermometer ID #4134100

Rush

Cool Intact

Corrected Temp. °C

FORM-006 R3.2 10/07/12

† Cardinal cannot accept verbal changes. Please email changes to celey.keene@cardinallabsnm.com

District I
1625 N. French Dr., Hobbs, NM 88240
Phone:(575) 393-6161 Fax:(575) 393-0720
District II
811 S. First St., Artesia, NM 88210
Phone:(575) 748-1283 Fax:(575) 748-9720
District III
1000 Rio Brazos Rd., Aztec, NM 87410
Phone:(505) 334-6178 Fax:(505) 334-6170
District IV
1220 S. St Francis Dr., Santa Fe, NM 87505
Phone:(505) 476-3470 Fax:(505) 476-3462

State of New Mexico
Energy, Minerals and Natural Resources
Oil Conservation Division
1220 S. St Francis Dr.
Santa Fe, NM 87505

QUESTIONS

Action 385263

QUESTIONS

Operator: XTO ENERGY, INC 6401 Holiday Hill Road Midland, TX 79707	OGRID: 5380
	Action Number: 385263
	Action Type: [C-141] Remediation Closure Request C-141 (C-141-v-Closure)

QUESTIONS

Prerequisites	
Incident ID (n#)	nAPP2409948527
Incident Name	NAPP2409948527 MUY WAYNO RECYCLE FACILITY @ 0
Incident Type	Oil Release
Incident Status	Remediation Closure Report Received

Location of Release Source

Please answer all the questions in this group.

Site Name	Muy Wayno Recycle Facility
Date Release Discovered	03/26/2024
Surface Owner	State

Incident Details

Please answer all the questions in this group.

Incident Type	Oil Release
Did this release result in a fire or is the result of a fire	No
Did this release result in any injuries	No
Has this release reached or does it have a reasonable probability of reaching a watercourse	No
Has this release endangered or does it have a reasonable probability of endangering public health	No
Has this release substantially damaged or will it substantially damage property or the environment	No
Is this release of a volume that is or may with reasonable probability be detrimental to fresh water	No

Nature and Volume of Release

Material(s) released, please answer all that apply below. Any calculations or specific justifications for the volumes provided should be attached to the follow-up C-141 submission.

Crude Oil Released (bbls) Details	Cause: Human Error Frac Tank Crude Oil Released: 15 BBL Recovered: 15 BBL Lost: 0 BBL.
Produced Water Released (bbls) Details	Not answered.
Is the concentration of chloride in the produced water >10,000 mg/l	No
Condensate Released (bbls) Details	Not answered.
Natural Gas Vented (Mcf) Details	Not answered.
Natural Gas Flared (Mcf) Details	Not answered.
Other Released Details	Not answered.
Are there additional details for the questions above (i.e. any answer containing Other, Specify, Unknown, and/or Fire, or any negative lost amounts)	Not answered.

District I

1625 N. French Dr., Hobbs, NM 88240
Phone:(575) 393-6161 Fax:(575) 393-0720

District II

811 S. First St., Artesia, NM 88210
Phone:(575) 748-1283 Fax:(575) 748-9720

District III

1000 Rio Brazos Rd., Aztec, NM 87410
Phone:(505) 334-6178 Fax:(505) 334-6170

District IV

1220 S. St Francis Dr., Santa Fe, NM 87505
Phone:(505) 476-3470 Fax:(505) 476-3462

State of New Mexico
Energy, Minerals and Natural Resources
Oil Conservation Division
1220 S. St Francis Dr.
Santa Fe, NM 87505

QUESTIONS, Page 2

Action 385263

QUESTIONS (continued)

Operator: XTO ENERGY, INC 6401 Holiday Hill Road Midland, TX 79707	OGRID:	5380
	Action Number:	385263
	Action Type:	[C-141] Remediation Closure Request C-141 (C-141-v-Closure)

QUESTIONS

Nature and Volume of Release (continued)	
Is this a gas only submission (i.e. only significant Mcf values reported)	No, according to supplied volumes this does not appear to be a "gas only" report.
Was this a major release as defined by Subsection A of 19.15.29.7 NMAC	No
Reasons why this would be considered a submission for a notification of a major release	Unavailable.
With the implementation of the 19.15.27 NMAC (05/25/2021), venting and/or flaring of natural gas (i.e. gas only) are to be submitted on the C-129 form.	

Initial Response

The responsible party must undertake the following actions immediately unless they could create a safety hazard that would result in injury.

The source of the release has been stopped	True
The impacted area has been secured to protect human health and the environment	True
Released materials have been contained via the use of berms or dikes, absorbent pads, or other containment devices	True
All free liquids and recoverable materials have been removed and managed appropriately	True
If all the actions described above have not been undertaken, explain why	Not answered.

Per Paragraph (4) of Subsection B of 19.15.29.8 NMAC the responsible party may commence remediation immediately after discovery of a release. If remediation has begun, please prepare and attach a narrative of actions to date in the follow-up C-141 submission. If remedial efforts have been successfully completed or if the release occurred within a lined containment area (see Subparagraph (a) of Paragraph (5) of Subsection A of 19.15.29.11 NMAC), please prepare and attach all information needed for closure evaluation in the follow-up C-141 submission.

I hereby certify that the information given above is true and complete to the best of my knowledge and understand that pursuant to OCD rules and regulations all operators are required to report and/or file certain release notifications and perform corrective actions for releases which may endanger public health or the environment. The acceptance of a C-141 report by the OCD does not relieve the operator of liability should their operations have failed to adequately investigate and remediate contamination that pose a threat to groundwater, surface water, human health or the environment. In addition, OCD acceptance of a C-141 report does not relieve the operator of responsibility for compliance with any other federal, state, or local laws and/or regulations.

I hereby agree and sign off to the above statement	Name: Colton Brown Title: Environmental Advisor Email: colton.s.brown@exxonmobil.com Date: 09/19/2024
--	--

District I
1625 N. French Dr., Hobbs, NM 88240
Phone:(575) 393-6161 Fax:(575) 393-0720
District II
811 S. First St., Artesia, NM 88210
Phone:(575) 748-1283 Fax:(575) 748-9720
District III
1000 Rio Brazos Rd., Aztec, NM 87410
Phone:(505) 334-6178 Fax:(505) 334-6170
District IV
1220 S. St Francis Dr., Santa Fe, NM 87505
Phone:(505) 476-3470 Fax:(505) 476-3462

State of New Mexico
Energy, Minerals and Natural Resources
Oil Conservation Division
1220 S. St Francis Dr.
Santa Fe, NM 87505

QUESTIONS, Page 3

Action 385263

QUESTIONS (continued)

Operator: XTO ENERGY, INC 6401 Holiday Hill Road Midland, TX 79707	OGRID:
	5380
	Action Number:
	385263
Action Type:	
[C-141] Remediation Closure Request C-141 (C-141-v-Closure)	

QUESTIONS

Site Characterization	
<i>Please answer all the questions in this group (only required when seeking remediation plan approval and beyond). This information must be provided to the appropriate district office no later than 90 days after the release discovery date.</i>	
What is the shallowest depth to groundwater beneath the area affected by the release in feet below ground surface (ft bgs)	Between 100 and 500 (ft.)
What method was used to determine the depth to ground water	U.S. Geological Survey
Did this release impact groundwater or surface water	No
What is the minimum distance, between the closest lateral extents of the release and the following surface areas:	
A continuously flowing watercourse or any other significant watercourse	Between 300 and 500 (ft.)
Any lakebed, sinkhole, or playa lake (measured from the ordinary high-water mark)	Between ½ and 1 (mi.)
An occupied permanent residence, school, hospital, institution, or church	Greater than 5 (mi.)
A spring or a private domestic fresh water well used by less than five households for domestic or stock watering purposes	Between 1 and 5 (mi.)
Any other fresh water well or spring	Between 1 and 5 (mi.)
Incorporated municipal boundaries or a defined municipal fresh water well field	Greater than 5 (mi.)
A wetland	Between ½ and 1 (mi.)
A subsurface mine	Greater than 5 (mi.)
An (non-karst) unstable area	Greater than 5 (mi.)
Categorize the risk of this well / site being in a karst geology	Low
A 100-year floodplain	Between ½ and 1 (mi.)
Did the release impact areas not on an exploration, development, production, or storage site	No

Remediation Plan	
<i>Please answer all the questions that apply or are indicated. This information must be provided to the appropriate district office no later than 90 days after the release discovery date.</i>	
Requesting a remediation plan approval with this submission	Yes
<i>Attach a comprehensive report demonstrating the lateral and vertical extents of soil contamination associated with the release have been determined, pursuant to 19.15.29.11 NMAC and 19.15.29.13 NMAC.</i>	
Have the lateral and vertical extents of contamination been fully delineated	Yes
Was this release entirely contained within a lined containment area	No
Soil Contamination Sampling: (Provide the highest observable value for each, in milligrams per kilograms.)	
Chloride (EPA 300.0 or SM4500 Cl B)	336
TPH (GRO+DRO+MRO) (EPA SW-846 Method 8015M)	0
GRO+DRO (EPA SW-846 Method 8015M)	0
BTEX (EPA SW-846 Method 8021B or 8260B)	0
Benzene (EPA SW-846 Method 8021B or 8260B)	0
<i>Per Subsection B of 19.15.29.11 NMAC unless the site characterization report includes completed efforts at remediation, the report must include a proposed remediation plan in accordance with 19.15.29.12 NMAC, which includes the anticipated timelines for beginning and completing the remediation.</i>	
On what estimated date will the remediation commence	04/12/2024
On what date will (or did) the final sampling or liner inspection occur	08/29/2024
On what date will (or was) the remediation complete(d)	09/11/2024
What is the estimated surface area (in square feet) that will be reclaimed	250
What is the estimated volume (in cubic yards) that will be reclaimed	30
What is the estimated surface area (in square feet) that will be remediated	250
What is the estimated volume (in cubic yards) that will be remediated	30
<i>These estimated dates and measurements are recognized to be the best guess or calculation at the time of submission and may (be) change(d) over time as more remediation efforts are completed.</i>	
<i>The OCD recognizes that proposed remediation measures may have to be minimally adjusted in accordance with the physical realities encountered during remediation. If the responsible party has any need to significantly deviate from the remediation plan proposed, then it should consult with the division to determine if another remediation plan submission is required.</i>	

District I

1625 N. French Dr., Hobbs, NM 88240
Phone:(575) 393-6161 Fax:(575) 393-0720

District II

811 S. First St., Artesia, NM 88210
Phone:(575) 748-1283 Fax:(575) 748-9720

District III

1000 Rio Brazos Rd., Aztec, NM 87410
Phone:(505) 334-6178 Fax:(505) 334-6170

District IV

1220 S. St Francis Dr., Santa Fe, NM 87505
Phone:(505) 476-3470 Fax:(505) 476-3462

State of New Mexico
Energy, Minerals and Natural Resources
Oil Conservation Division
1220 S. St Francis Dr.
Santa Fe, NM 87505

QUESTIONS, Page 4

Action 385263

QUESTIONS (continued)

Operator: XTO ENERGY, INC 6401 Holiday Hill Road Midland, TX 79707	OGRID: 5380
	Action Number: 385263
	Action Type: [C-141] Remediation Closure Request C-141 (C-141-v-Closure)

QUESTIONS

Remediation Plan (continued)	
<i>Please answer all the questions that apply or are indicated. This information must be provided to the appropriate district office no later than 90 days after the release discovery date.</i>	
This remediation will (or is expected to) utilize the following processes to remediate / reduce contaminants:	
<i>(Select all answers below that apply.)</i>	
(Ex Situ) Excavation and off-site disposal (i.e. dig and haul, hydrovac, etc.)	Yes
Which OCD approved facility will be used for off-site disposal	HALFWAY DISPOSAL AND LANDFILL [fEEM0112334510]
OR which OCD approved well (API) will be used for off-site disposal	Not answered.
OR is the off-site disposal site, to be used, out-of-state	Not answered.
OR is the off-site disposal site, to be used, an NMED facility	Not answered.
(Ex Situ) Excavation and on-site remediation (i.e. On-Site Land Farms)	Not answered.
(In Situ) Soil Vapor Extraction	Not answered.
(In Situ) Chemical processing (i.e. Soil Shredding, Potassium Permanganate, etc.)	Not answered.
(In Situ) Biological processing (i.e. Microbes / Fertilizer, etc.)	Not answered.
(In Situ) Physical processing (i.e. Soil Washing, Gypsum, Disking, etc.)	Not answered.
Ground Water Abatement pursuant to 19.15.30 NMAC	Not answered.
OTHER (Non-listed remedial process)	Not answered.
<i>Per Subsection B of 19.15.29.11 NMAC unless the site characterization report includes completed efforts at remediation, the report must include a proposed remediation plan in accordance with 19.15.29.12 NMAC, which includes the anticipated timelines for beginning and completing the remediation.</i>	
I hereby certify that the information given above is true and complete to the best of my knowledge and understand that pursuant to OCD rules and regulations all operators are required to report and/or file certain release notifications and perform corrective actions for releases which may endanger public health or the environment. The acceptance of a C-141 report by the OCD does not relieve the operator of liability should their operations have failed to adequately investigate and remediate contamination that pose a threat to groundwater, surface water, human health or the environment. In addition, OCD acceptance of a C-141 report does not relieve the operator of responsibility for compliance with any other federal, state, or local laws and/or regulations.	
I hereby agree and sign off to the above statement	Name: Colton Brown Title: Environmental Advisor Email: colton.s.brown@exxonmobil.com Date: 09/19/2024
<i>The OCD recognizes that proposed remediation measures may have to be minimally adjusted in accordance with the physical realities encountered during remediation. If the responsible party has any need to significantly deviate from the remediation plan proposed, then it should consult with the division to determine if another remediation plan submission is required.</i>	

District I
1625 N. French Dr., Hobbs, NM 88240
Phone:(575) 393-6161 Fax:(575) 393-0720
District II
811 S. First St., Artesia, NM 88210
Phone:(575) 748-1283 Fax:(575) 748-9720
District III
1000 Rio Brazos Rd., Aztec, NM 87410
Phone:(505) 334-6178 Fax:(505) 334-6170
District IV
1220 S. St Francis Dr., Santa Fe, NM 87505
Phone:(505) 476-3470 Fax:(505) 476-3462

State of New Mexico
Energy, Minerals and Natural Resources
Oil Conservation Division
1220 S. St Francis Dr.
Santa Fe, NM 87505

QUESTIONS, Page 5

Action 385263

QUESTIONS (continued)

Operator: XTO ENERGY, INC 6401 Holiday Hill Road Midland, TX 79707	OGRID:
	5380
	Action Number:
	385263
Action Type:	
[C-141] Remediation Closure Request C-141 (C-141-v-Closure)	

QUESTIONS

Deferral Requests Only	
Only answer the questions in this group if seeking a deferral upon approval this submission. Each of the following items must be confirmed as part of any request for deferral of remediation.	
Requesting a deferral of the remediation closure due date with the approval of this submission	No

District I

1625 N. French Dr., Hobbs, NM 88240
Phone:(575) 393-6161 Fax:(575) 393-0720

District II

811 S. First St., Artesia, NM 88210
Phone:(575) 748-1283 Fax:(575) 748-9720

District III

1000 Rio Brazos Rd., Aztec, NM 87410
Phone:(505) 334-6178 Fax:(505) 334-6170

District IV

1220 S. St Francis Dr., Santa Fe, NM 87505
Phone:(505) 476-3470 Fax:(505) 476-3462

State of New Mexico
Energy, Minerals and Natural Resources
Oil Conservation Division
1220 S. St Francis Dr.
Santa Fe, NM 87505

QUESTIONS, Page 6

Action 385263

QUESTIONS (continued)

Operator: XTO ENERGY, INC 6401 Holiday Hill Road Midland, TX 79707	OGRID:
	5380
	Action Number:
	385263
Action Type: [C-141] Remediation Closure Request C-141 (C-141-v-Closure)	

QUESTIONS

Sampling Event Information	
Last sampling notification (C-141N) recorded	380878
Sampling date pursuant to Subparagraph (a) of Paragraph (1) of Subsection D of 19.15.29.12 NMAC	09/11/2024
What was the (estimated) number of samples that were to be gathered	4
What was the sampling surface area in square feet	200

Remediation Closure Request

Only answer the questions in this group if seeking remediation closure for this release because all remediation steps have been completed.

Requesting a remediation closure approval with this submission	Yes
Have the lateral and vertical extents of contamination been fully delineated	Yes
Was this release entirely contained within a lined containment area	No
All areas reasonably needed for production or subsequent drilling operations have been stabilized, returned to the sites existing grade, and have a soil cover that prevents ponding of water, minimizing dust and erosion	Yes
What was the total surface area (in square feet) remediated	250
What was the total volume (cubic yards) remediated	30
All areas not reasonably needed for production or subsequent drilling operations have been reclaimed to contain a minimum of four feet of non-waste contain earthen material with concentrations less than 600 mg/kg chlorides, 100 mg/kg TPH, 50 mg/kg BTEX, and 10 mg/kg Benzene	Yes
What was the total surface area (in square feet) reclaimed	350
What was the total volume (in cubic yards) reclaimed	30
Summarize any additional remediation activities not included by answers (above)	Site assessment and delineation activities were conducted at the Site to assess for the presence or absence of impacted soil from the March 26, 2024 release of crude oil. Laboratory analytical results for all excavation soil samples collected indicate COC concentrations were compliant with the Closure Criteria. Based on the soil sample laboratory analytical results, no further remediation is required. The excavation has been backfilled with material purchased locally and the Site has been recontoured to match pre-existing site conditions.

The responsible party must attach information demonstrating they have complied with all applicable closure requirements and any conditions or directives of the OCD. This demonstration should be in the form of a comprehensive report (in .pdf format) including a scaled site map, sampling diagrams, relevant field notes, photographs of any excavation prior to backfilling, laboratory data including chain of custody documents of final sampling, and a narrative of the remedial activities. Refer to 19.15.29.12 NMAC.

I hereby certify that the information given above is true and complete to the best of my knowledge and understand that pursuant to OCD rules and regulations all operators are required to report and/or file certain release notifications and perform corrective actions for releases which may endanger public health or the environment. The acceptance of a C-141 report by the OCD does not relieve the operator of liability should their operations have failed to adequately investigate and remediate contamination that pose a threat to groundwater, surface water, human health or the environment. In addition, OCD acceptance of a C-141 report does not relieve the operator of responsibility for compliance with any other federal, state, or local laws and/or regulations. The responsible party acknowledges they must substantially restore, reclaim, and re-vegetate the impacted surface area to the conditions that existed prior to the release or their final land use in accordance with 19.15.29.13 NMAC including notification to the OCD when reclamation and re-vegetation are complete.

I hereby agree and sign off to the above statement	Name: Colton Brown Title: Environmental Advisor Email: colton.s.brown@exxonmobil.com Date: 09/19/2024
--	--

District I
1625 N. French Dr., Hobbs, NM 88240
Phone:(575) 393-6161 Fax:(575) 393-0720
District II
811 S. First St., Artesia, NM 88210
Phone:(575) 748-1283 Fax:(575) 748-9720
District III
1000 Rio Brazos Rd., Aztec, NM 87410
Phone:(505) 334-6178 Fax:(505) 334-6170
District IV
1220 S. St Francis Dr., Santa Fe, NM 87505
Phone:(505) 476-3470 Fax:(505) 476-3462

State of New Mexico
Energy, Minerals and Natural Resources
Oil Conservation Division
1220 S. St Francis Dr.
Santa Fe, NM 87505

QUESTIONS, Page 7

Action 385263

QUESTIONS (continued)

Operator: XTO ENERGY, INC 6401 Holiday Hill Road Midland, TX 79707	OGRID:	5380
	Action Number:	385263
	Action Type:	
	[C-141] Remediation Closure Request C-141 (C-141-v-Closure)	

QUESTIONS

Reclamation Report	
Only answer the questions in this group if all reclamation steps have been completed.	
Requesting a reclamation approval with this submission	No

District I
1625 N. French Dr., Hobbs, NM 88240
Phone:(575) 393-6161 Fax:(575) 393-0720
District II
811 S. First St., Artesia, NM 88210
Phone:(575) 748-1283 Fax:(575) 748-9720
District III
1000 Rio Brazos Rd., Aztec, NM 87410
Phone:(505) 334-6178 Fax:(505) 334-6170
District IV
1220 S. St Francis Dr., Santa Fe, NM 87505
Phone:(505) 476-3470 Fax:(505) 476-3462

State of New Mexico
Energy, Minerals and Natural Resources
Oil Conservation Division
1220 S. St Francis Dr.
Santa Fe, NM 87505

CONDITIONS

Action 385263

CONDITIONS

Operator: XTO ENERGY, INC 6401 Holiday Hill Road Midland, TX 79707	OGRID: 5380
	Action Number: 385263
	Action Type: [C-141] Remediation Closure Request C-141 (C-141-v-Closure)

CONDITIONS

Created By	Condition	Condition Date
rhamlet	We have received your Remediation Closure Report for Incident #NAPP2409948527 MUY WAYNO RECYCLE FACILITY, thank you. This Remediation Closure Report is approved.	11/6/2024